



Dual Compensated
Porosity Log

DIGITAL LOG (785) 625-3858

API No. 15-185-23738-00-00

Company RAMA Operating Co., Inc.
Well Moore #1-27
Field North Star
County Stafford State Kansas

Location NE SE SW NE
765' FNL / 1560' FEL

Sec: 27 Twp: 24S Rge: 12W

Other Services
DIL
MEL

Permanent Datum Ground Level Elevation 1876
Log Measured From Kelly Bushing 9 Ft. Above Perm. Datum
Drilling Measured From Kelly Bushing

Date 3/8/2012

Run Number One
Type Log CNL / CDL
Depth Driller 4150
Depth Logger 4152
Bottom Logged Interval 4131
Top Logged Interval 2900
Type Fluid In Hole Chemical
Salinity, PPM CL 7000
Density 9.3
Level Full
Max. Rec. Temp. F 118
Operating Rig Time 4 Hours
Equipment -- Location 15 Hays
Recorded By R. Barnhart
Witnessed By Josh Austin

| Borehole Record | | | | Casing Record | | | |
|-----------------|-------|------|------|---------------|------|------|-----|
| Run No. | Bit | From | To | Size | Wgt. | From | To |
| 1 | 12.25 | 00 | 280 | 8.625 | 24# | 00 | 280 |
| 2 | 7.875 | 280 | 4150 | | | | |
| | | | | | | | |
| | | | | | | | |
| | | | | | | | |
| | | | | | | | |
| | | | | | | | |
| | | | | | | | |

<<< Fold Here >>>

All interpretations are opinions based on inferences from electrical or other measurements and we cannot and do not guarantee the accuracy or correctness of any interpretation, and we shall not, except in the case of gross or willful negligence on our part, be liable or responsible for any loss, costs, damages, or expenses incurred or sustained by anyone resulting from any interpretation made by any of our officers, agents or employees. These interpretations are also subject to our general terms and conditions set out in our current Price Schedule.

Comments

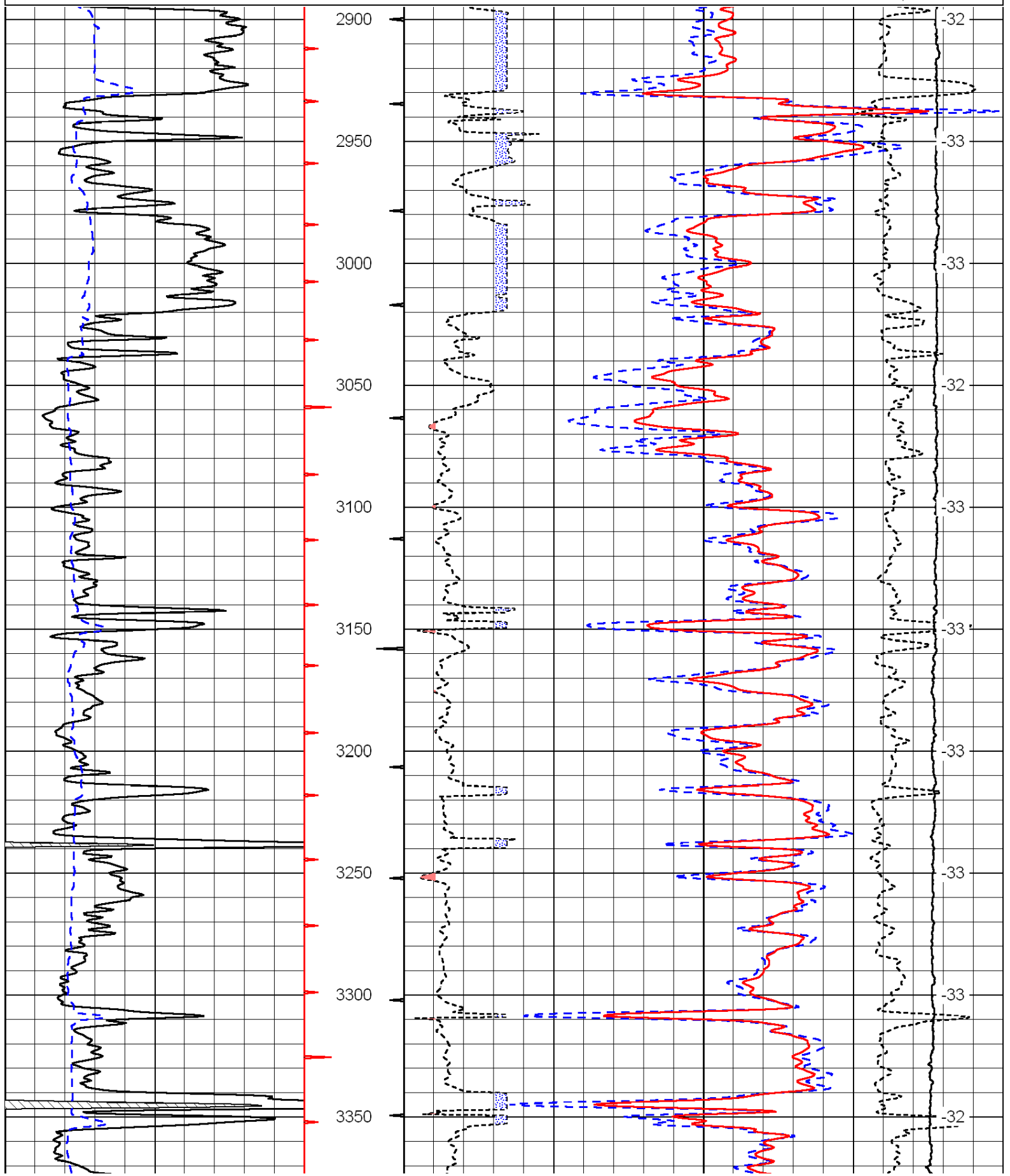
Thank you for using Log-Tech, Inc.
(785) 625-3858

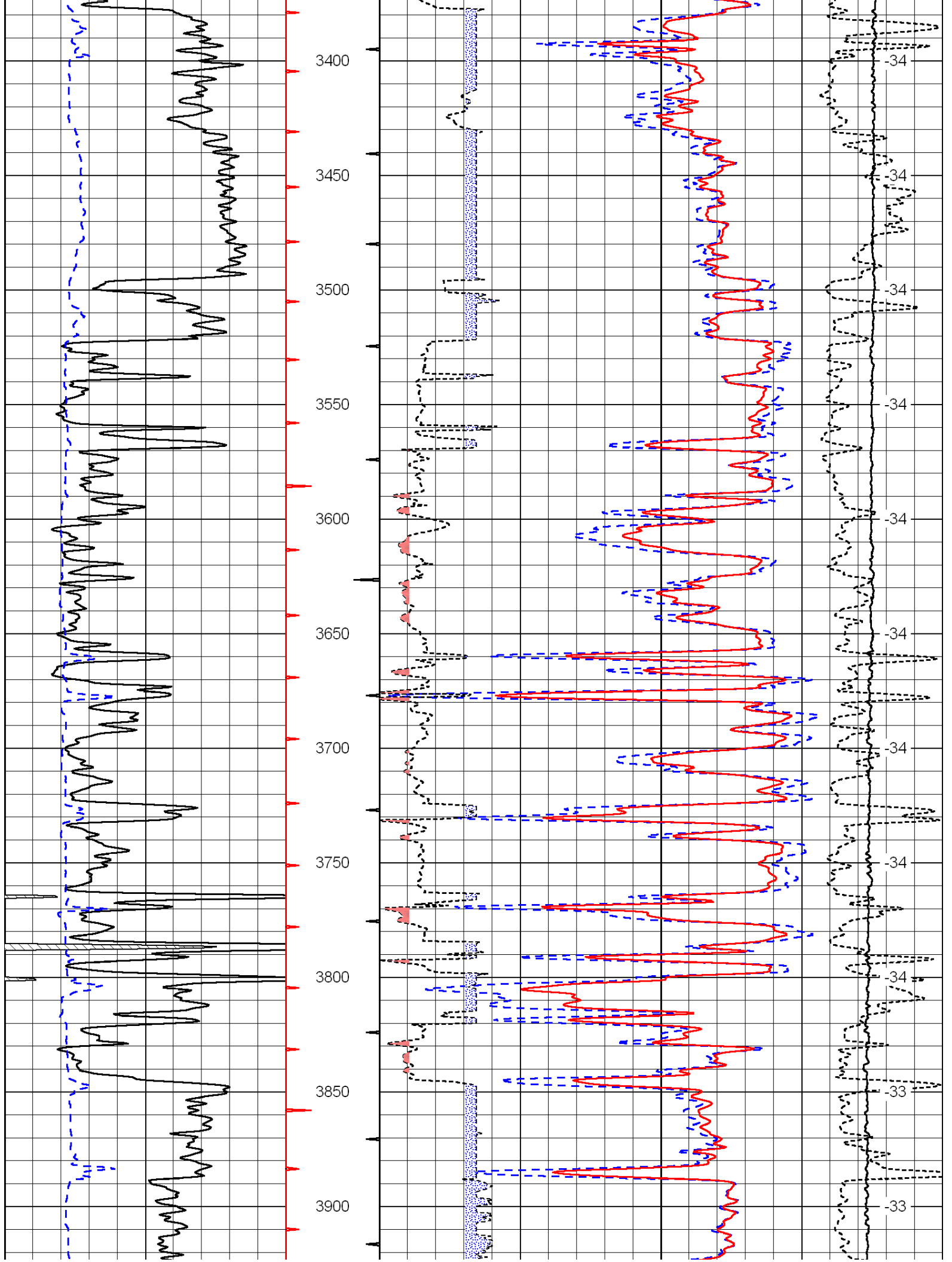
Stafford, KS:
1S, 1 1/4W, S into

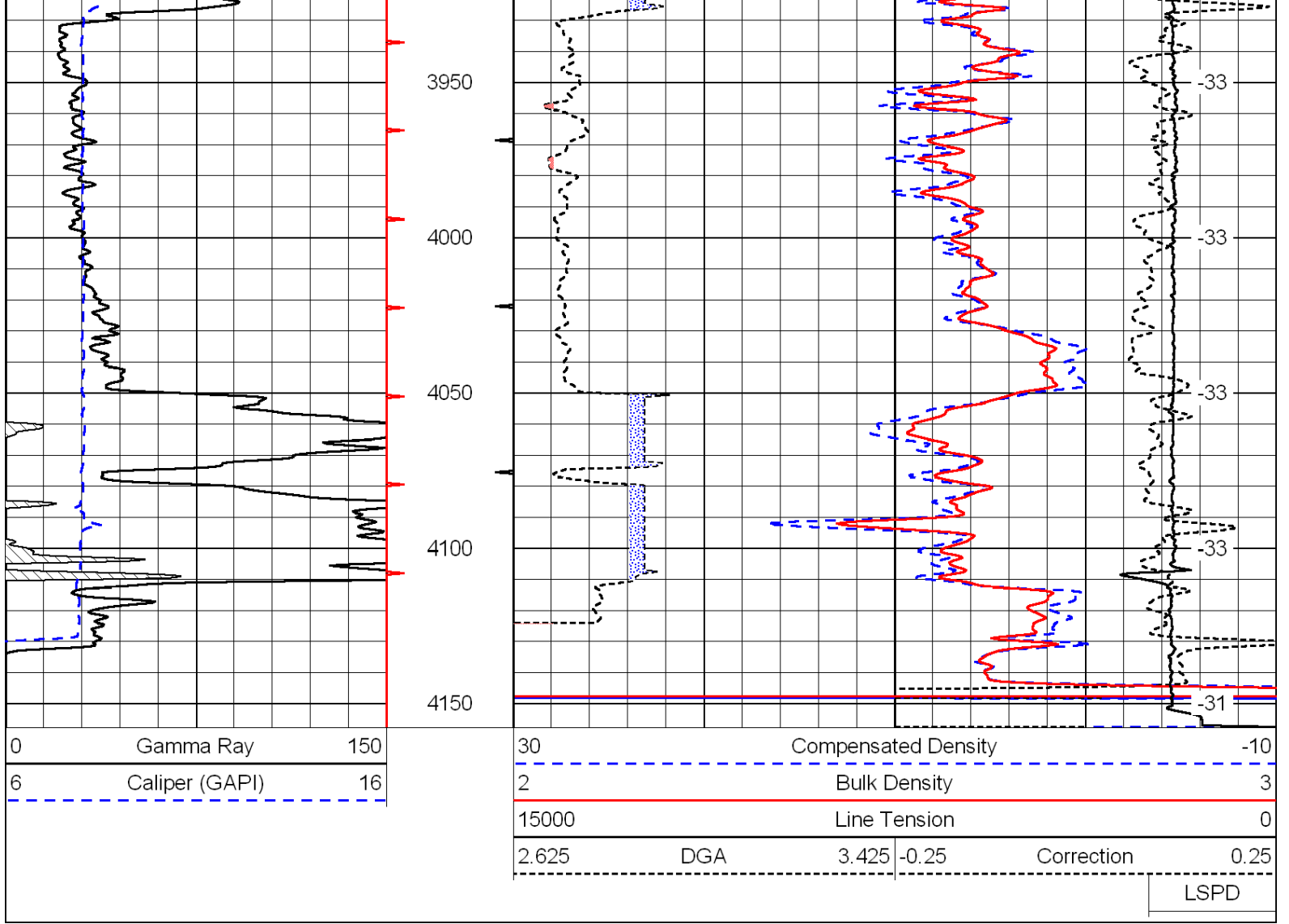
Database File: c:\warrior\data\rama_moore #1-27\ramahd2.db
 Dataset Pathname: dil/rammain
 Presentation Format: cdl
 Dataset Creation: Thu Mar 08 01:22:48 2012
 Charted by: Depth in Feet scaled 1:600

| | | |
|---|----------------|-----|
| 0 | Gamma Ray | 150 |
| 6 | Caliper (GAPI) | 16 |

| | | | |
|-------|---------------------|-------|------------|
| 30 | Compensated Density | | -10 |
| 2 | Bulk Density | | 3 |
| 15000 | Line Tension | | 0 |
| 2.625 | DGA | 3.425 | -0.25 |
| | | | Correction |
| | | | 0.25 |
| LSPD | | | |







Database File: c:\warrior\data\rama_moore #1-27\ramahd2.db
 Dataset Pathname: dil/rammain
 Presentation Format: cndlspec
 Dataset Creation: Thu Mar 08 01:22:48 2012
 Charted by: Depth in Feet scaled 1:240

