



# Dual Compensated Porosity Log

DIGITAL LOG (785) 625-3858

API No. 15-145-21666-00-00

Company **Credo Petroleum Corporation**  
 Well **Springer Trust #1-18**  
 Field **Wildcat**  
 County **Pawnee** State **Kansas**

Location **W2 E2 SE  
1320' FSL / 990' FEL**

Sec: **18** Twp: **20S** Rge: **19W**

Other Services  
DIL

Permanent Datum **Ground Level** Elevation **2208**  
 Log Measured From **Kelly Bushing** 5 Ft. Above Perm. Datum  
 Drilling Measured From **Kelly Bushing**

K.B. 2213  
 D.F. G.L. 2208

Date **2/17/2012**

Run Number **One**

Type Log **CNL / CDL**

Depth Driller **4400**

Depth Logger **4401**

Bottom Logged Interval **4380**

Top Logged Interval **3300**

Type Fluid In Hole **Chemical**

Salinity, PPM CL **9200**

Density **9.5**

Level **Full**

Max. Rec. Temp. F **120**

Operating Rig Time **3 Hours**

Equipment -- Location **15 Hays**

Recorded By **R. Barnhart**

Witnessed By **Bruce Ard**

| Borehole Record |       |      |     | Casing Record |      |      |     |
|-----------------|-------|------|-----|---------------|------|------|-----|
| Run No          | Bit   | From | To  | Size          | Wgt. | From | To  |
| One             | 12.25 | 00   | 223 | 8.625         | 23#  | 00   | 223 |
| Two             | 7.875 | 223  | TD  |               |      |      |     |
|                 |       |      |     |               |      |      |     |
|                 |       |      |     |               |      |      |     |
|                 |       |      |     |               |      |      |     |
|                 |       |      |     |               |      |      |     |
|                 |       |      |     |               |      |      |     |
|                 |       |      |     |               |      |      |     |
|                 |       |      |     |               |      |      |     |

<<< Fold Here >>>

All interpretations are opinions based on inferences from electrical or other measurements and we cannot and do not guarantee the accuracy or correctness of any interpretation, and we shall not, except in the case of gross or willful negligence on our part, be liable or responsible for any loss, costs, damages, or expenses incurred or sustained by anyone resulting from any interpretation made by any of our officers, agents or employees. These interpretations are also subject to our general terms and conditions set out in our current Price Schedule.

Comments

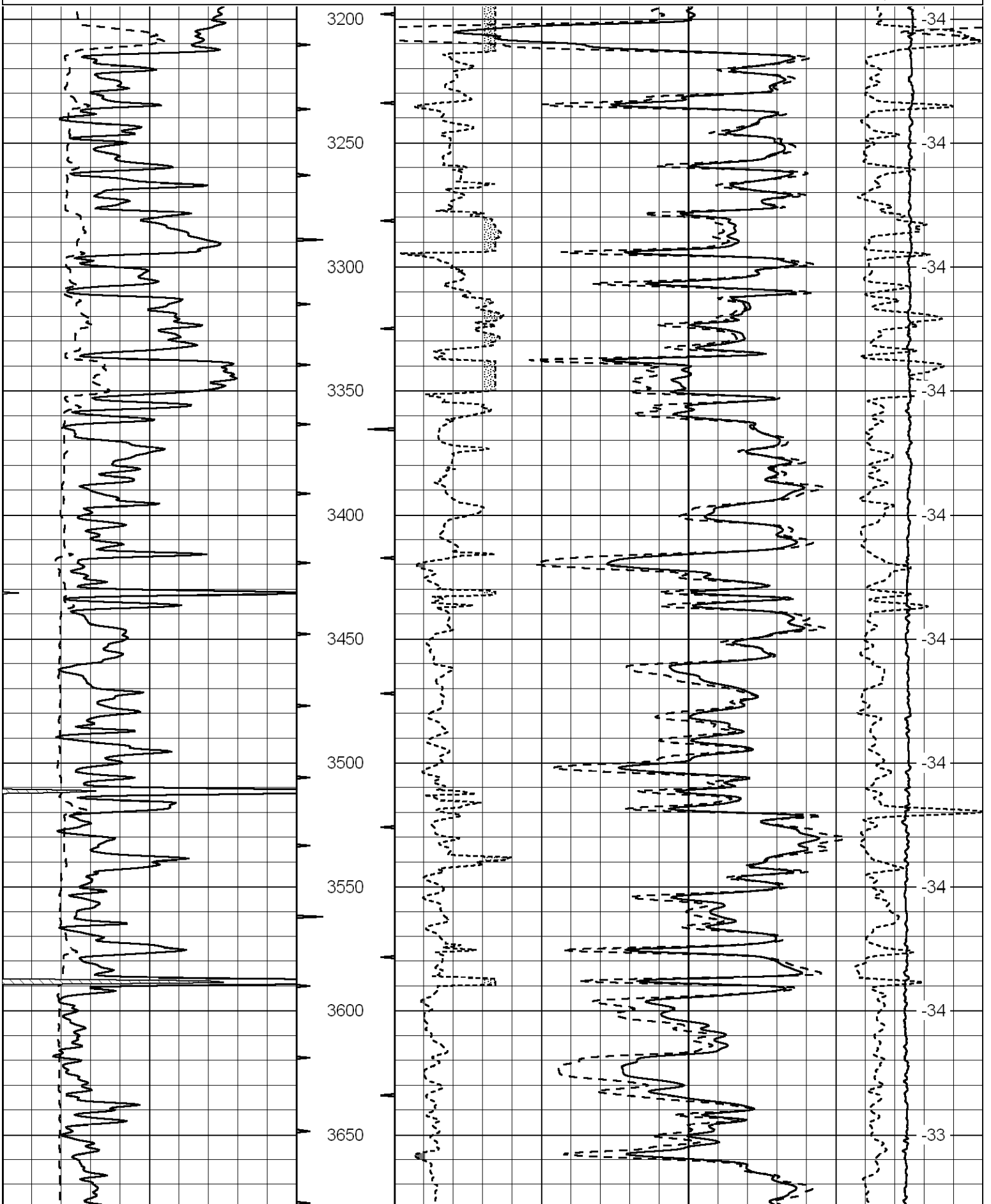
Thank you for using Log-Tech, Inc.  
 (785) 625-3858

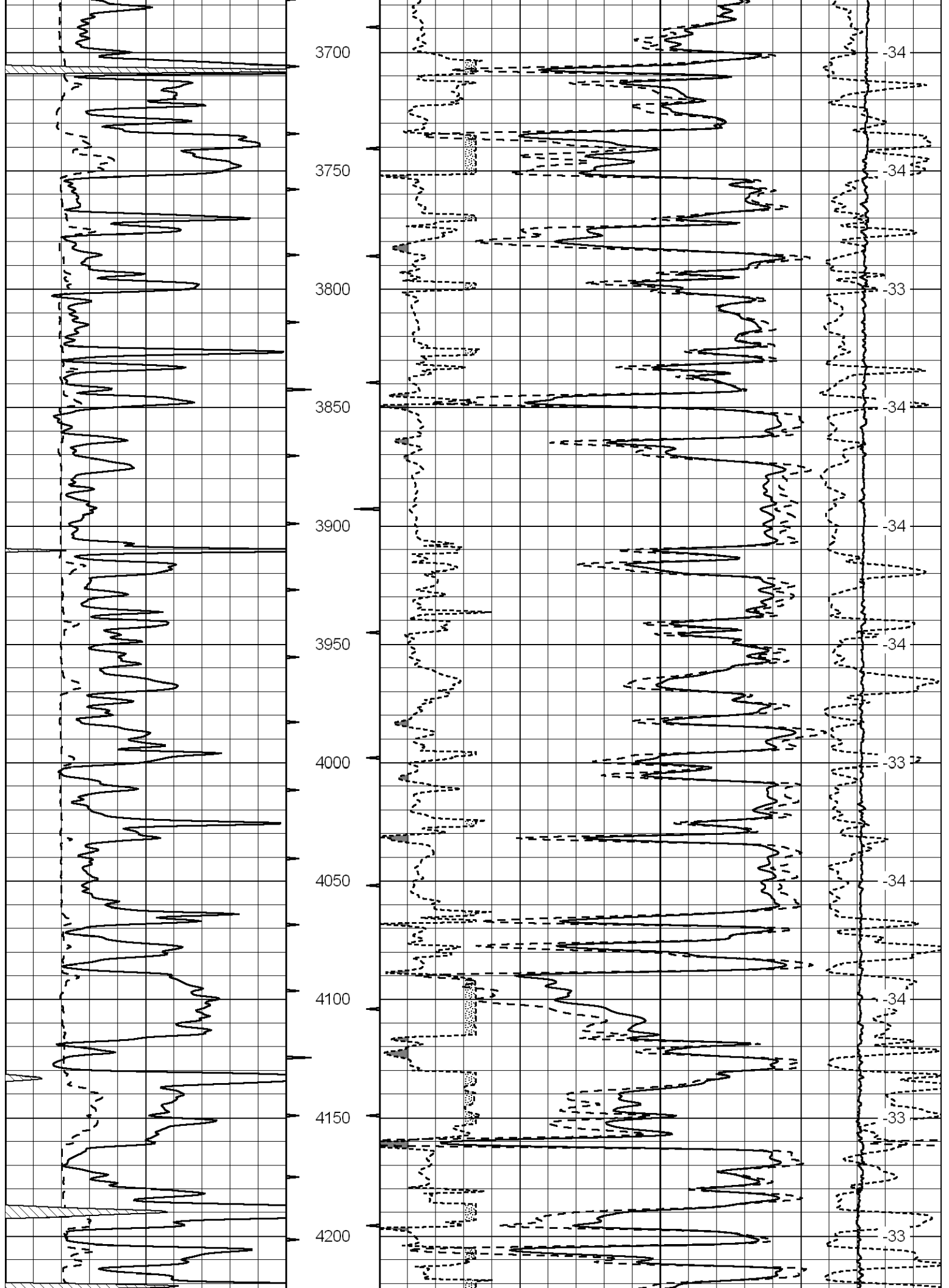
Rush Center, KS:  
 S to Co. Line, S to X Rd,  
 8W, 1/2S, W into

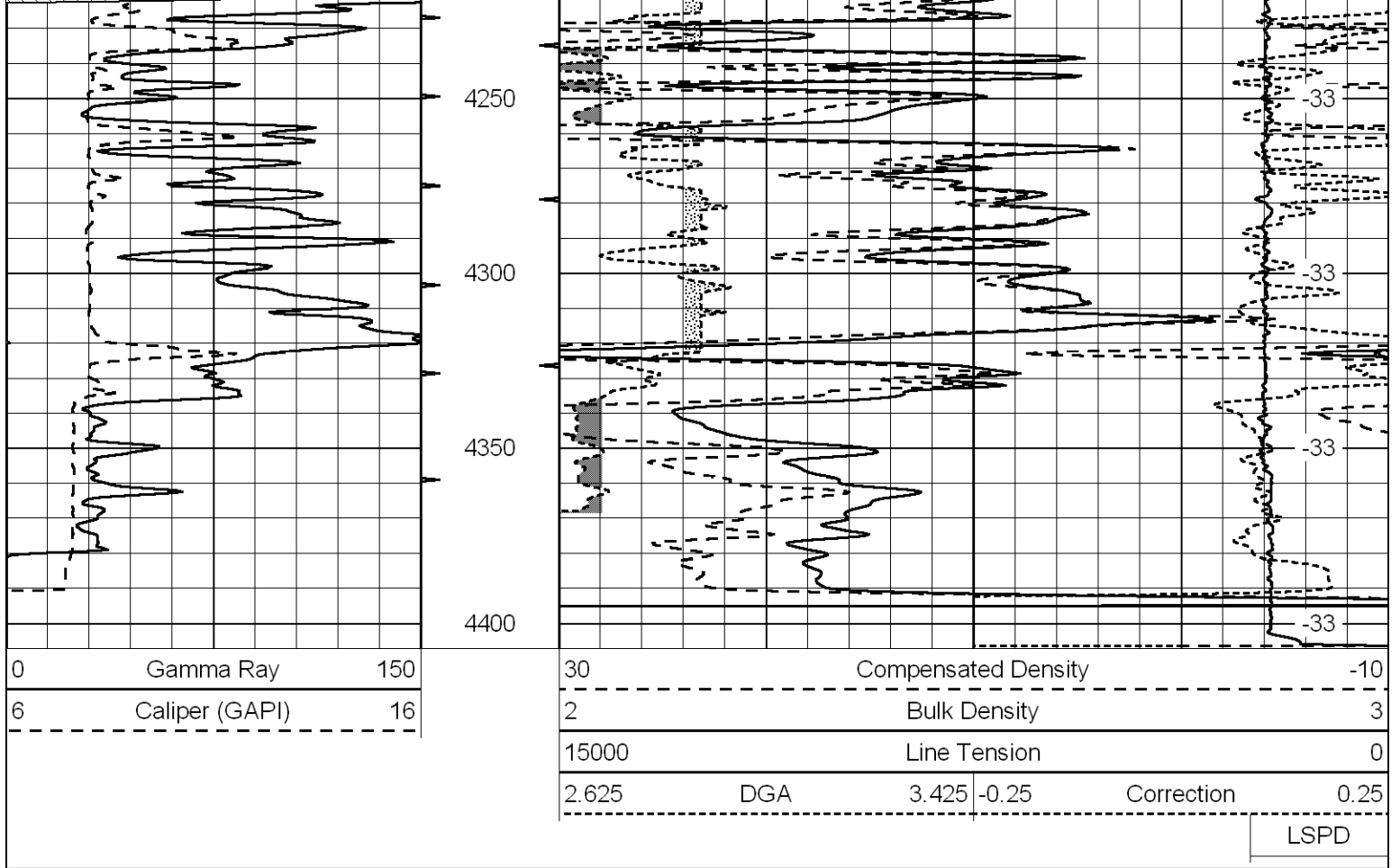
Database File: credohd.db  
 Dataset Pathname: dil/cremain  
 Presentation Format: cdl  
 Dataset Creation: Fri Feb 17 13:04:01 2012  
 Charted by: Depth in Feet scaled 1:600

|   |                |     |
|---|----------------|-----|
| 0 | Gamma Ray      | 150 |
| 6 | Caliper (GAPI) | 16  |

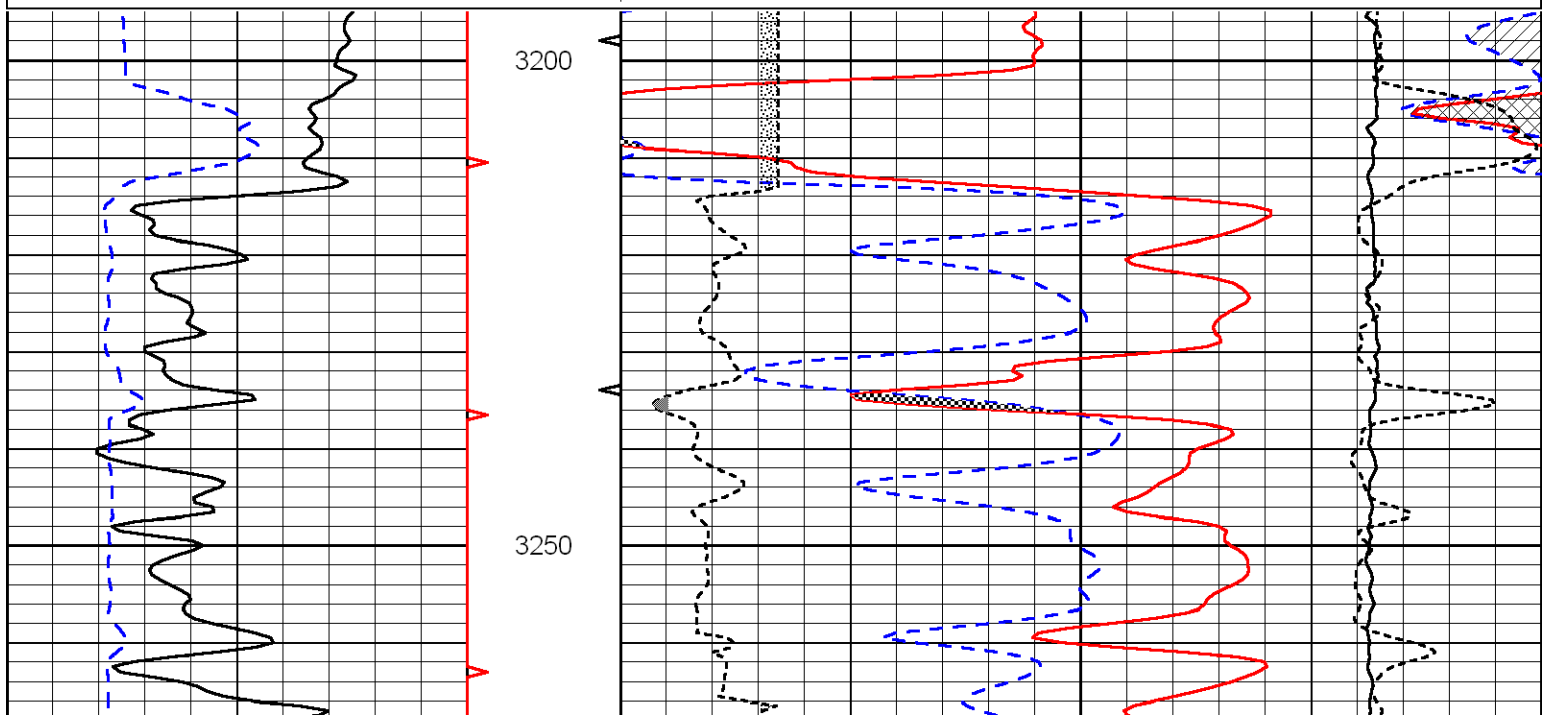
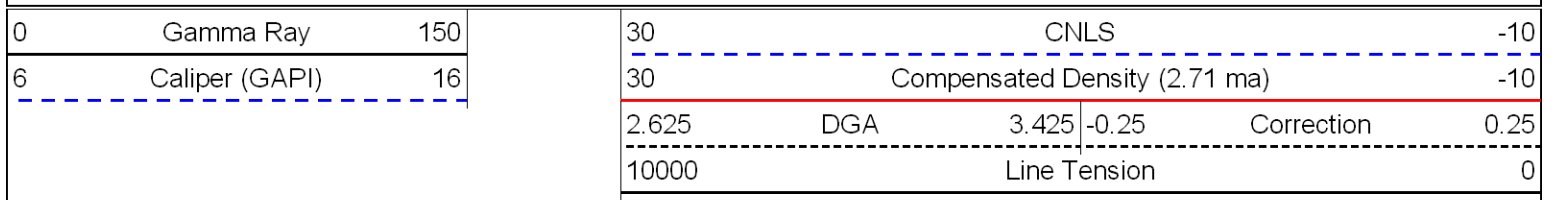
|            |                     |       |       |
|------------|---------------------|-------|-------|
| 30         | Compensated Density |       | -10   |
| 2          | Bulk Density        |       | 3     |
| 15000      | Line Tension        |       | 0     |
| 2.625      | DGA                 | 3.425 | -0.25 |
| Correction |                     |       | 0.25  |
| LSPD       |                     |       |       |

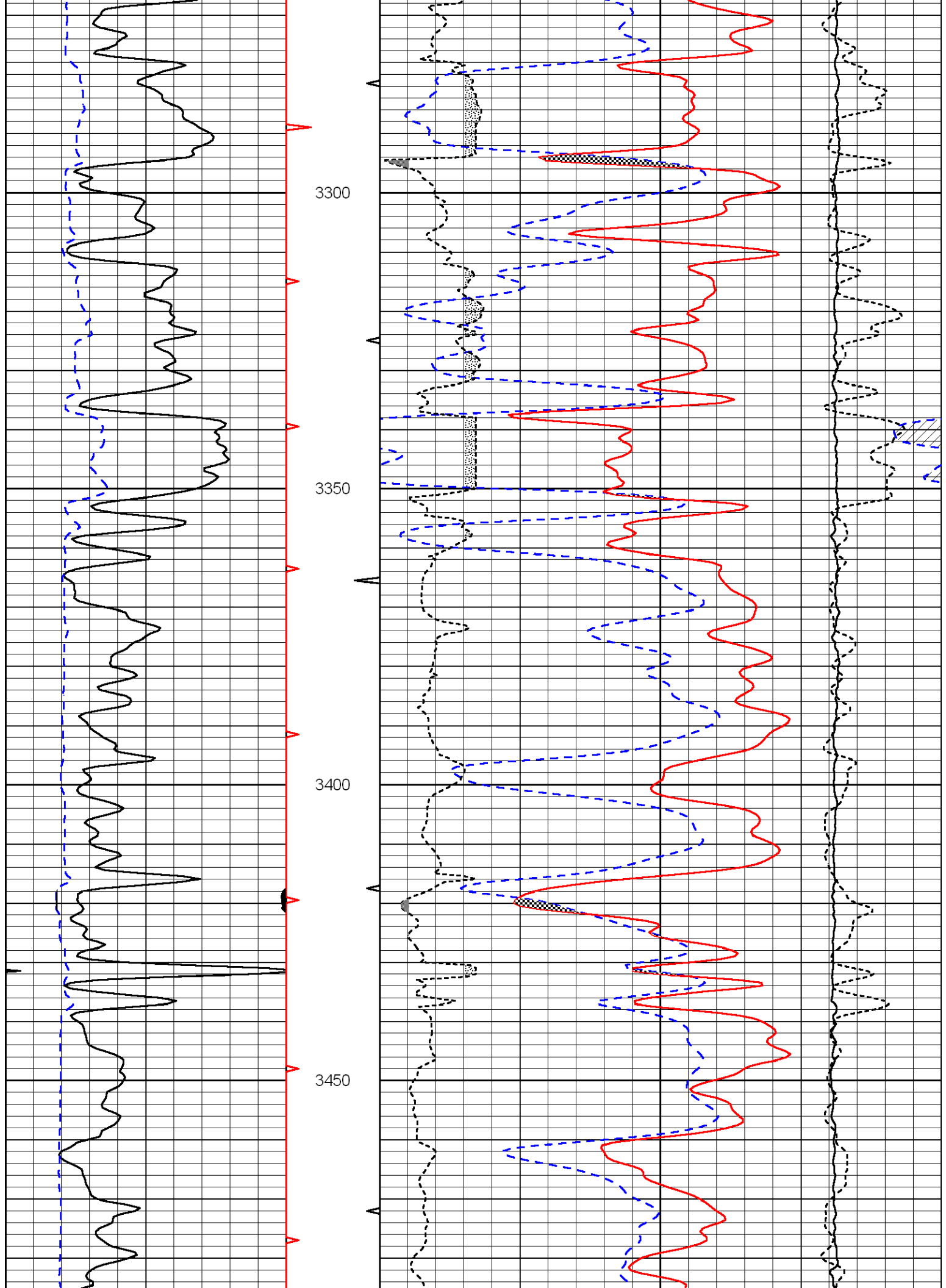


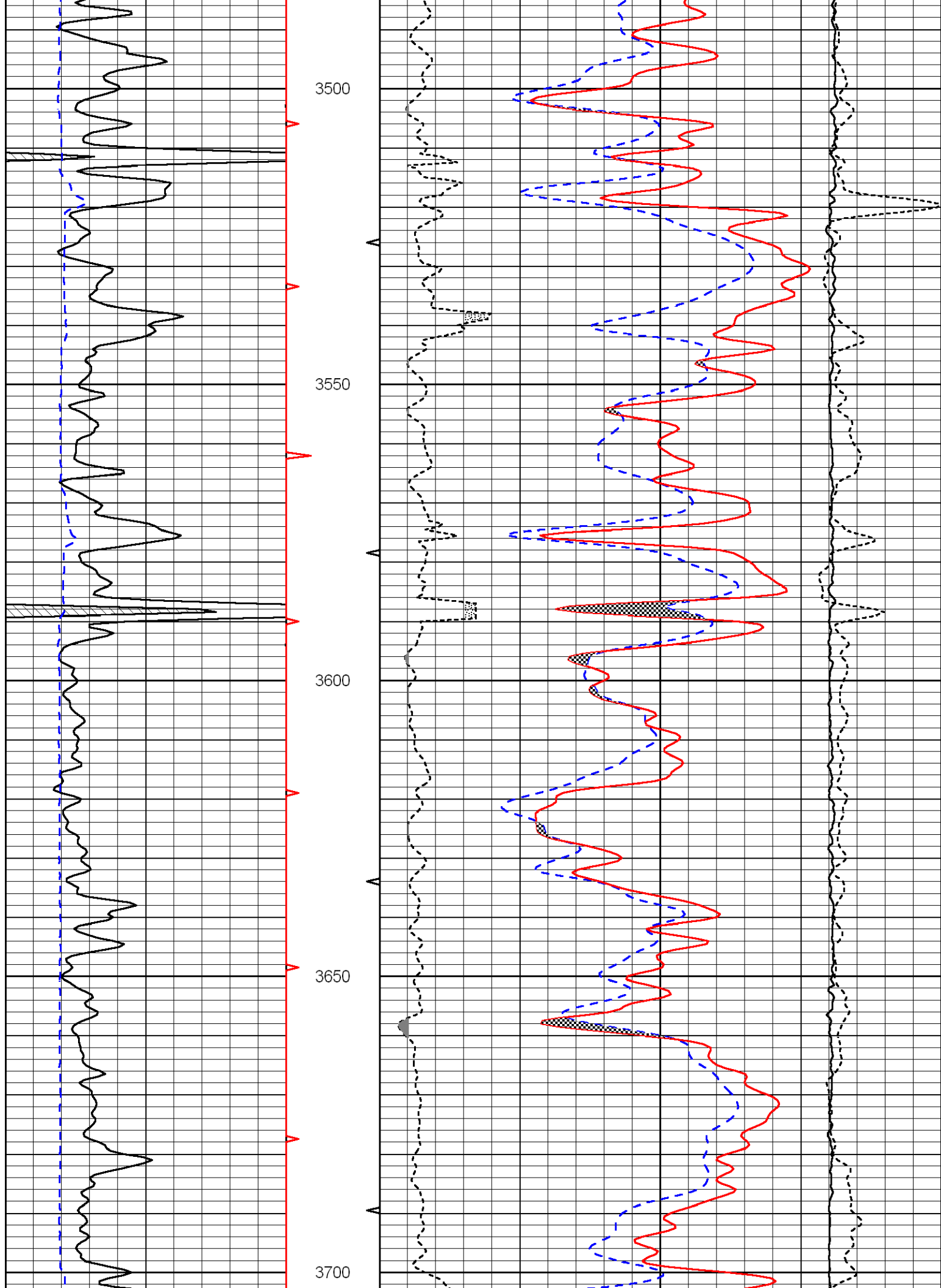


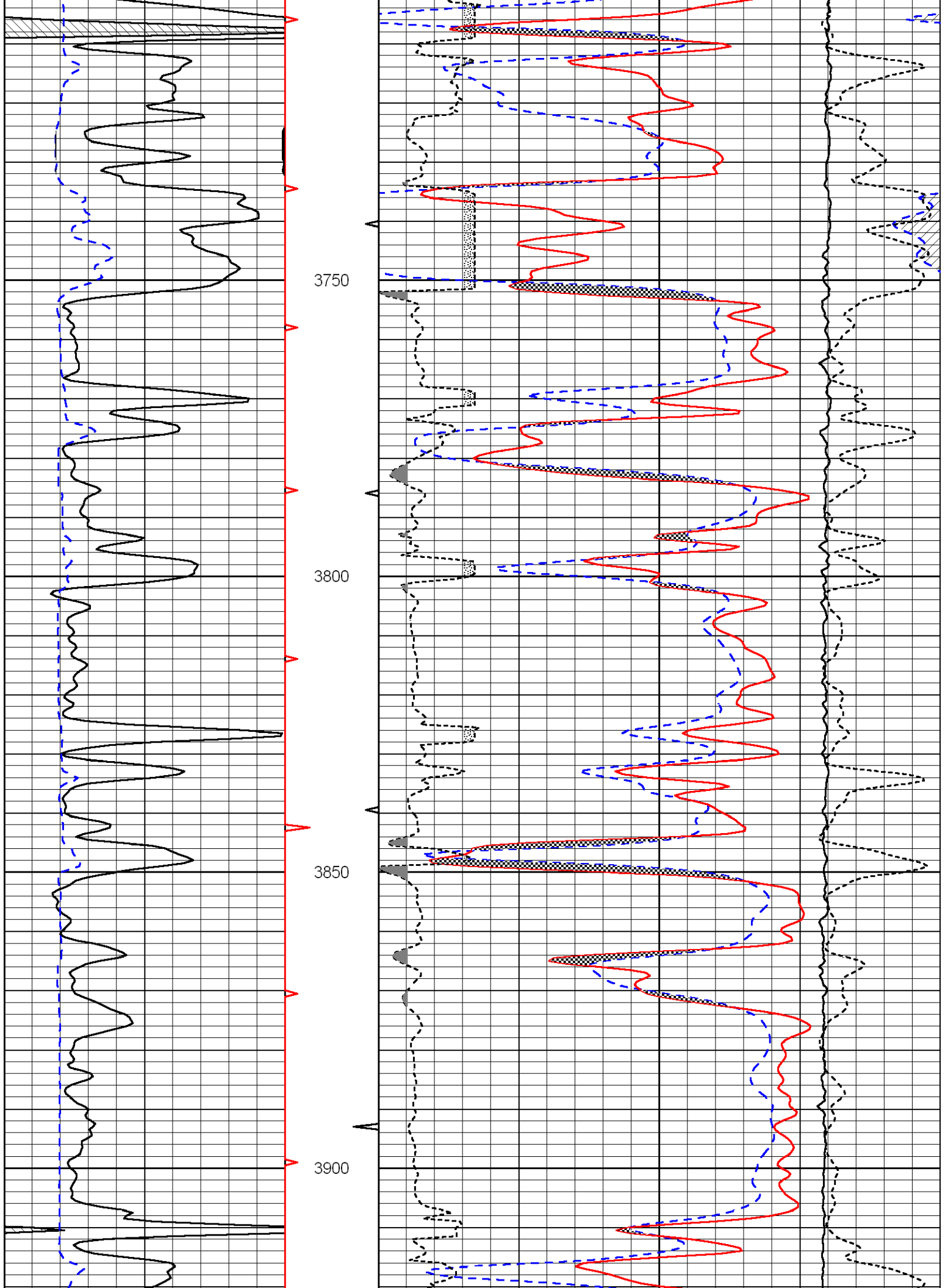


Database File: credohd.db  
 Dataset Pathname: dil/cremain  
 Presentation Format: cndlspec  
 Dataset Creation: Fri Feb 17 13:04:01 2012  
 Charted by: Depth in Feet scaled 1:240

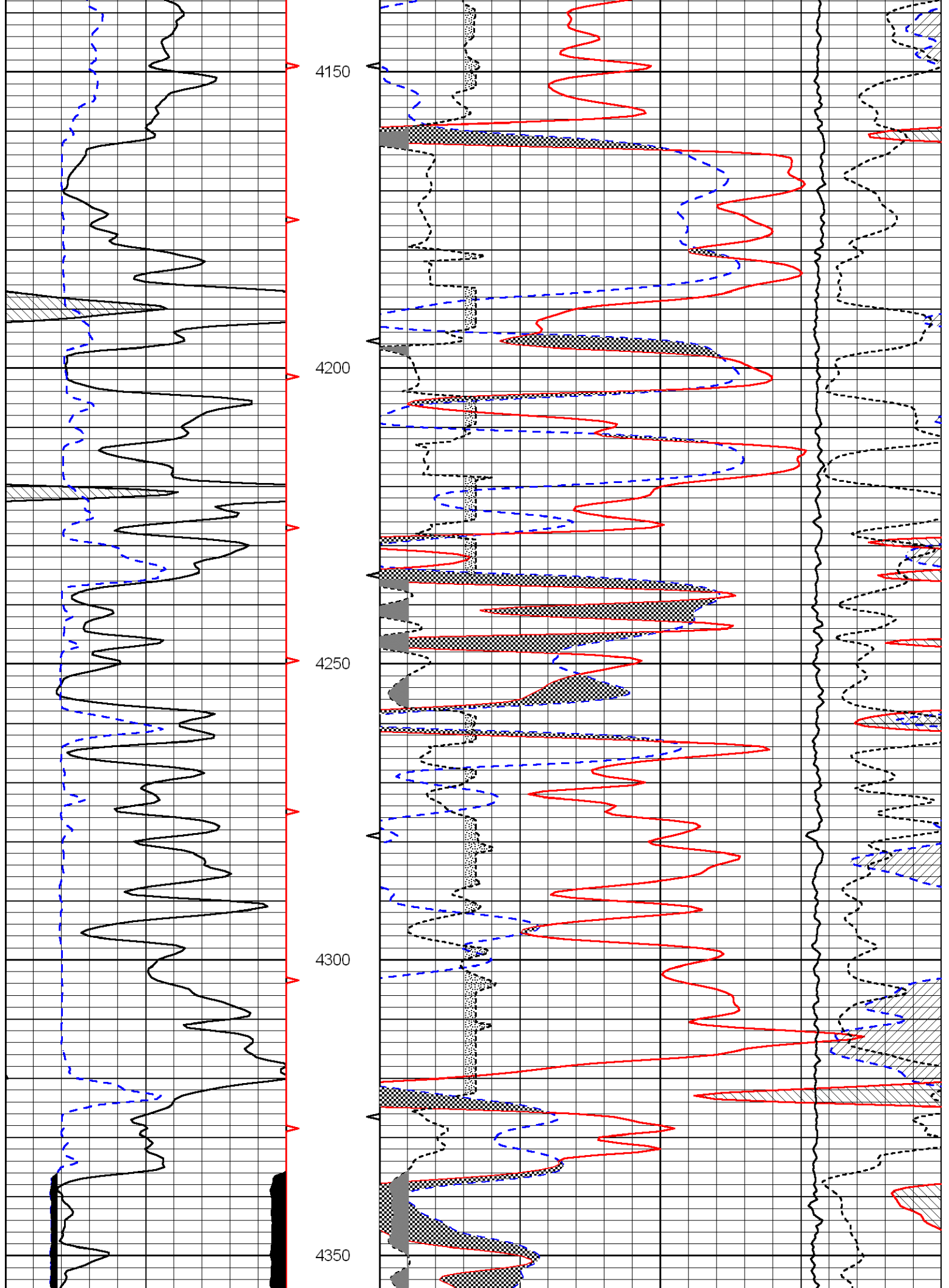


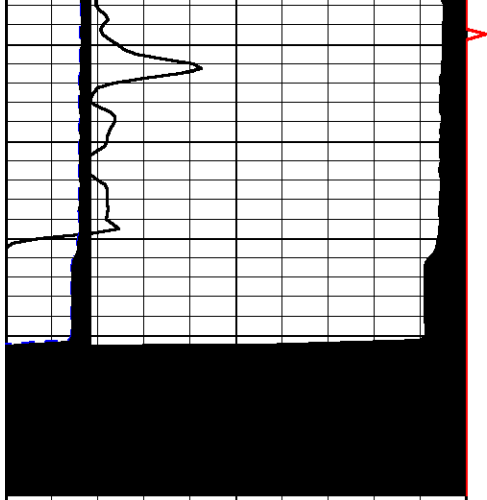




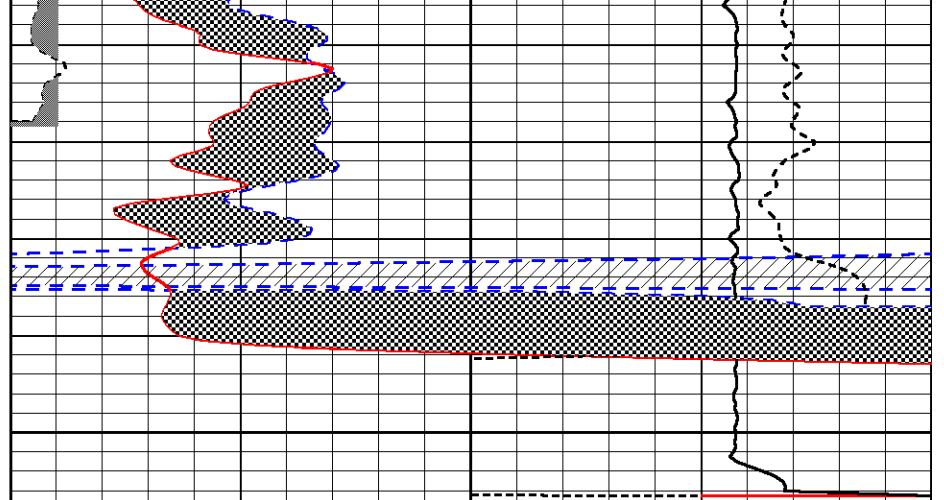








4400



|   |                |     |
|---|----------------|-----|
| 0 | Gamma Ray      | 150 |
| 6 | Caliper (GAPI) | 16  |

|       |                               |       |                       |
|-------|-------------------------------|-------|-----------------------|
| 30    | CNLS                          |       | -10                   |
| 30    | Compensated Density (2.71 ma) |       | -10                   |
| 2.625 | DGA                           | 3.425 | -0.25 Correction 0.25 |
| 10000 | Line Tension                  |       | 0                     |