



DIGITAL LOG (785) 625-3858

Dual Compensated Porosity Log

15-009-25651-00-00

API No. _____
 Company L. D. Drilling, Inc.
 Well Salvino #2-19
 Field Trapp
 County Barton State Kansas
 Location SE SW NW NE
 1070' FNL & 2300' FEL
 Sec: 19 Twp: 16S Rge: 13W
 Permanent Datum Ground Level Elevation 1944
 Log Measured From Kelly Bushing 5 Ft. Above Perm. Datum
 Drilling Measured From Kelly Bushing
 Date 1/29/2012
 Run Number One
 Type Log CNL / CDL
 Depth Driller 3470
 Depth Logger 3469
 Bottom Logged Interval 3448
 Top Logged Interval 2800
 Type Fluid In Hole Chemical
 Salinity, PPM CL 6000
 Density 9.3
 Level Full
 Max. Rec. Temp. F 111
 Operating Rig Time 4 Hours
 Equipment -- Location 10 Hays
 Recorded By D. Schmidt
 Witnessed By J. Long

Borehole Record				Casing Record			
Run No.	Bit	From	To	Size	Wgt.	From	To
1	12.25	00	497	8.625	24#	00	497
2	7.875	497	3470				

<<< Fold Here >>>

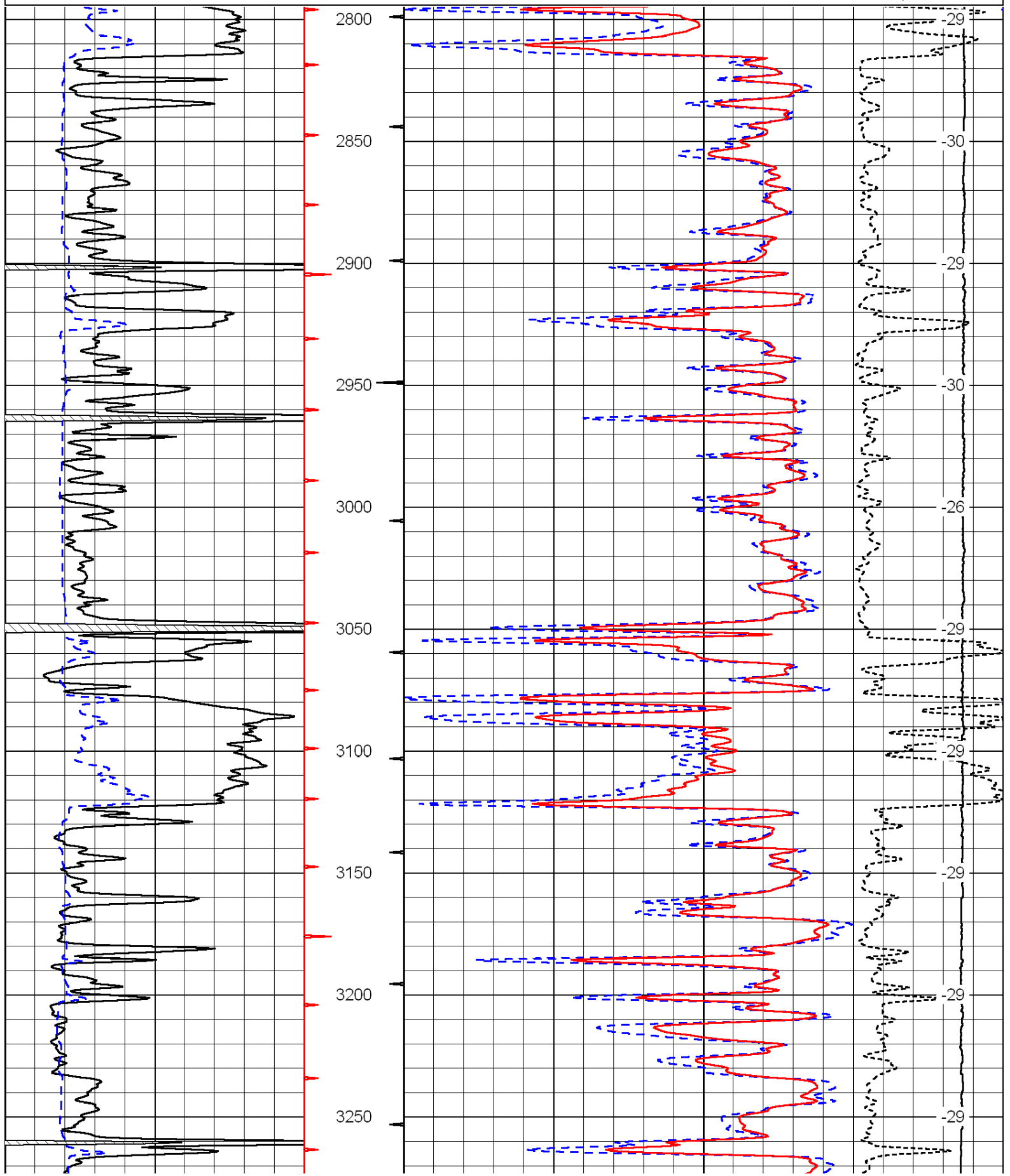
All interpretations are opinions based on inferences from electrical or other measurements and we cannot and do not guarantee the accuracy or correctness of any interpretation, and we shall not, except in the case of gross or willful negligence on our part, be liable or responsible for any loss, costs, damages, or expenses incurred or sustained by anyone resulting from any interpretation made by any of our officers, agents or employees. These interpretations are also subject to our general terms and conditions set out in our current Price Schedule.

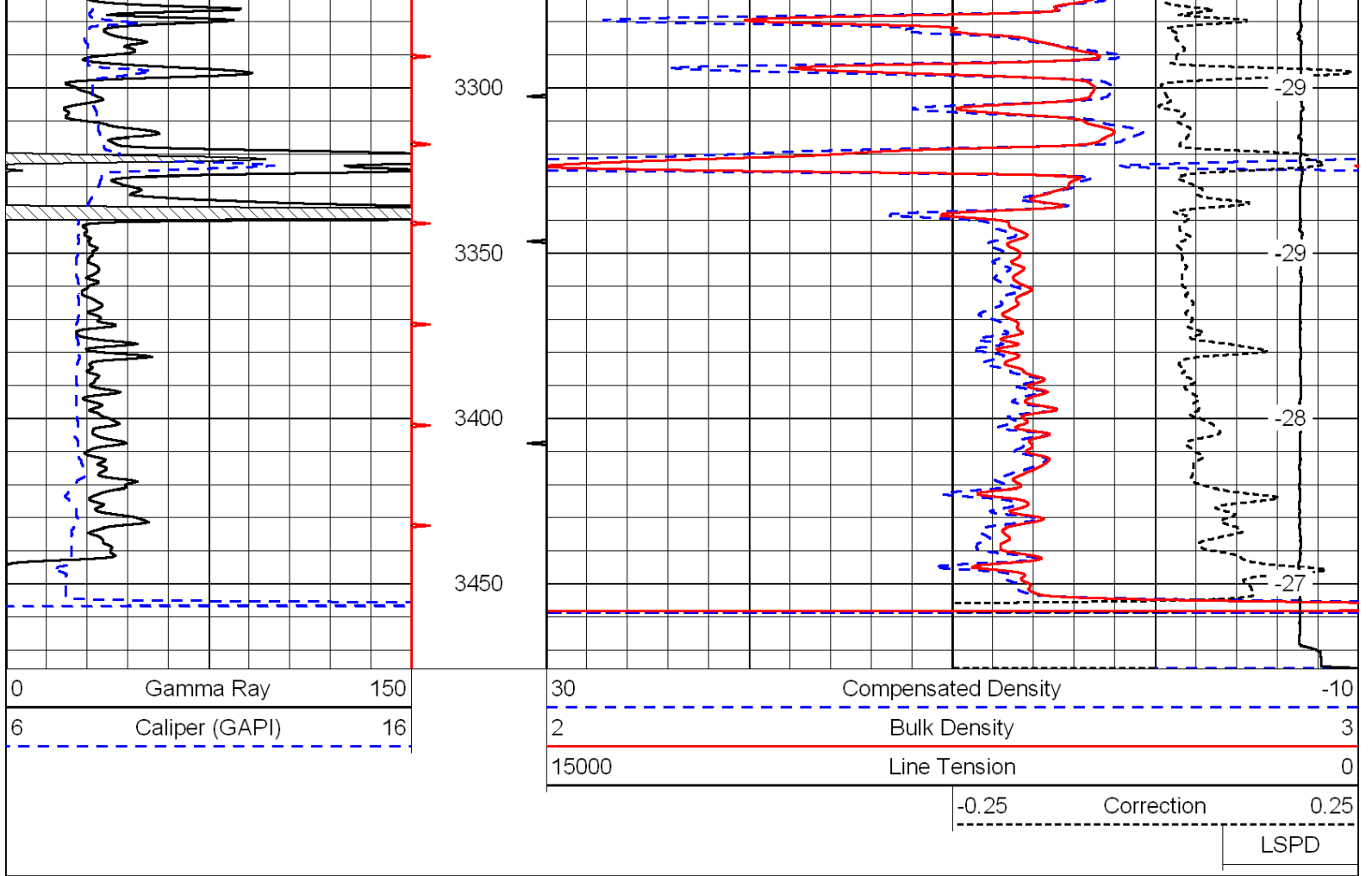
Comments

Thank you for using Log-Tech, Inc.
 (785) 625-3858
 Susank,
 1 W, 1 N, 1/2 W,
 S into

0	Gamma Ray	150
6	Caliper (GAPI)	16

30	Compensated Density	-10
2	Bulk Density	3
15000	Line Tension	0
-0.25	Correction	0.25
LSPD		





Database File: c:\warrior\data\ld drilling_salvino #2-19\ldsavino_2-19hd2.db
 Dataset Pathname: dil/ldstack
 Presentation Format: cndlspec
 Dataset Creation: Mon Jan 30 13:11:44 2012
 Charted by: Depth in Feet scaled 1:240

