



Microresistivity Log

DIGITAL LOG (785) 625-3858

15-009-25651-00-00

| | | | | |
|------------------------|---------------|---------------------|--|----------------------------------|
| API No. | Company | L.D. Drilling, Inc. | Location SE SW NW NE 1070' FNL & 2300' FEL | Other Services CNL/CDL DIL |
| | Well | Salvino #2-19 | | |
| | Field | Trapp | County | State |
| | County | Barton | | |
| | Sec: | 19 | Twp: | 16S |
| | | | Rge: | 13W |
| Permanent Datum | Ground Level | Elevation | 1944 | Elevation |
| Log Measured From | Kelly Bushing | 5 | Ft. Above Perm. Datum | |
| Drilling Measured From | Kelly Bushing | | | D.F. 1944 |
| | | | | G.L. 1944 |

| | |
|------------------------|-------------|
| Date | 1/29/2012 |
| Run Number | Two |
| Depth Driller | 3470 |
| Depth Logger | 3469 |
| Bottom Logged Interval | 3468 |
| Top Log Interval | 2800 |
| Casing Driller | 8.625 @ 497 |
| Casing Logger | 493 |
| Bit Size | 7.875 |
| Type Fluid in Hole | Chemical |
| Salinity, ppm CL | 6000 |
| Density / Viscosity | 9.3 52 |
| pH / Fluid Loss | 10.0 10.4 |
| Source of Sample | Flowline |
| Rm @ Meas. Temp | 0.53 @ 50 |
| Rmf @ Meas. Temp | 0.40 @ 50 |
| Rmc @ Meas. Temp | 0.72 @ 50 |
| Source of Rmf / Rmc | Charts |
| Rm @ BHT | 0.24 @ 111 |
| Operating Rig Time | 4 Hours |
| Max Rec. Temp. F | 111 |
| Equipment Number | 10 |
| Location | Hays |
| Recorded By | D. Schmidt |
| Witnessed By | J. Austin |

<<< Fold Here >>>

All interpretations are opinions based on inferences from electrical or other measurements and we cannot and do not guarantee the accuracy or correctness of any interpretation, and we shall not, except in the case of gross or willful negligence on our part, be liable or responsible for any loss, costs, damages, or expenses incurred or sustained by anyone resulting from any interpretation made by any of our officers, agents or employees. These interpretations are also subject to our general terms and conditions set out in our current Price Schedule.

Comments

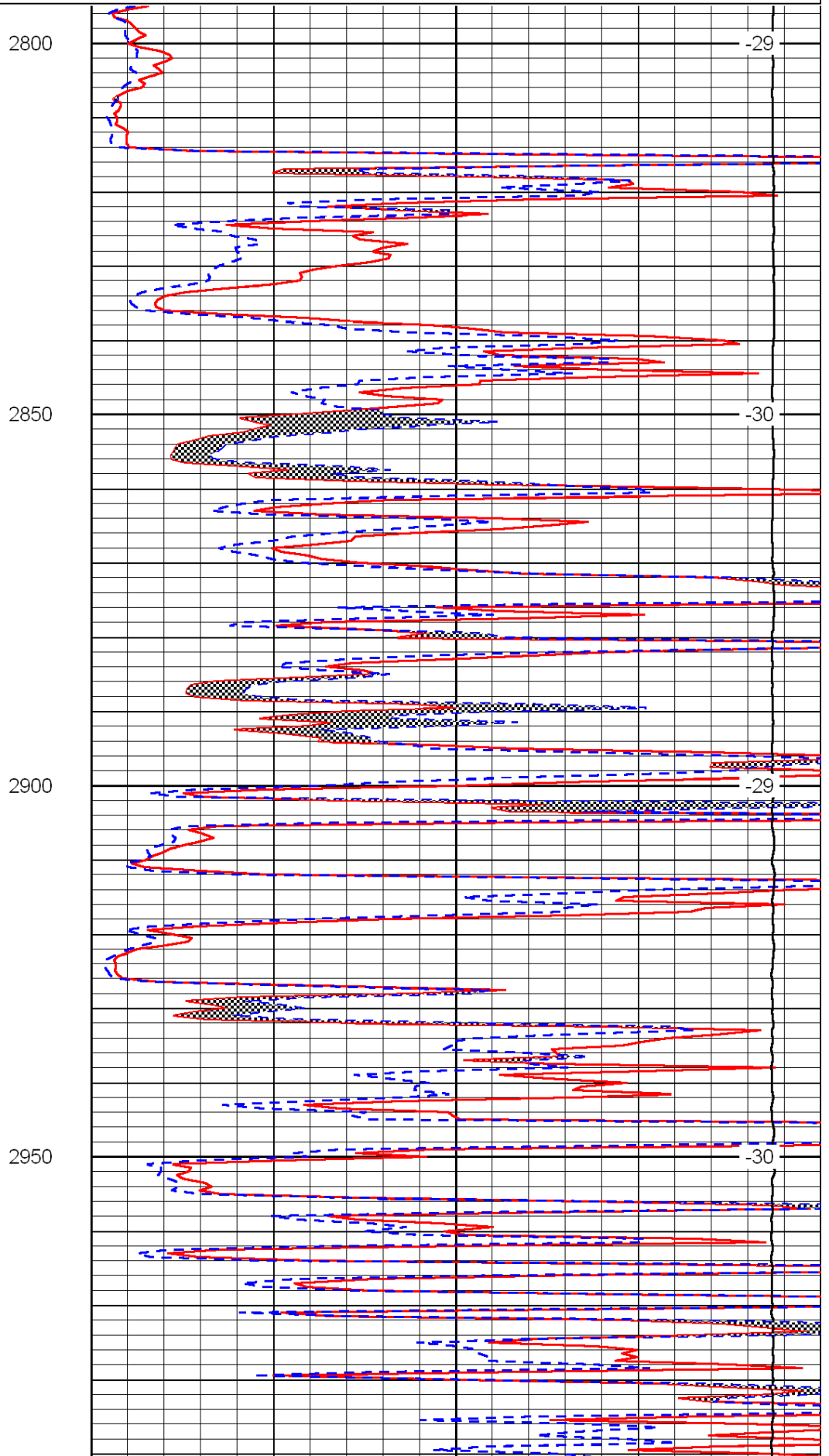
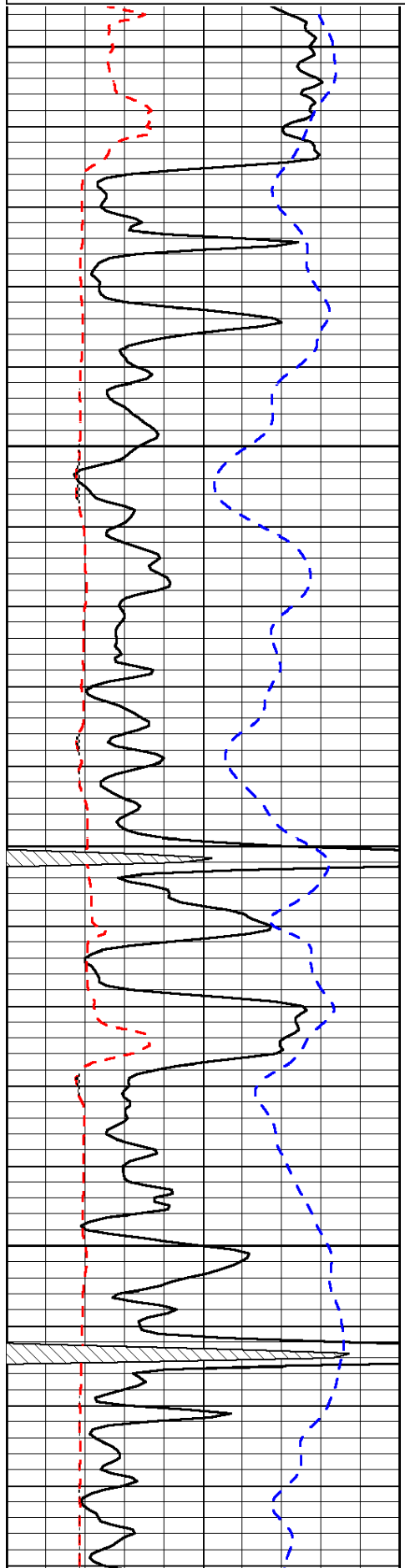
Thank you for using Log-Tech, Inc.
 (785) 625-3858

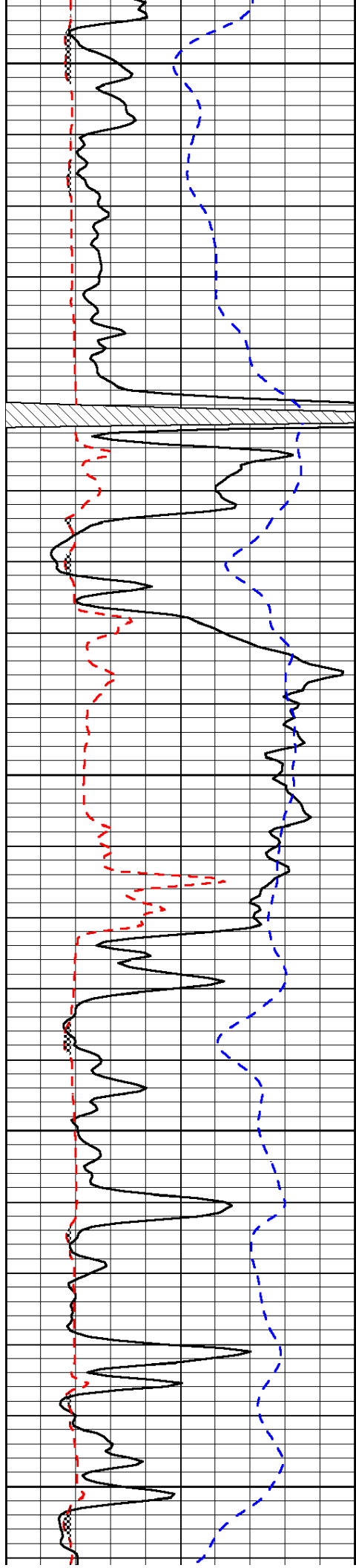
Susank,
 1 W, 1 N, 1/2 W,
 S into

| | | |
|------|--------------------------|-----|
| 0 | Gamma Ray | 150 |
| 6 | Micro Log Caliper (GAPI) | 16 |
| -200 | SP (mV) | 0 |

| | | |
|-------|---------------------|----|
| 0 | Micro Inverse 1 X 1 | 40 |
| 0 | Micro Normal 2" | 40 |
| 15000 | Line Weight | 0 |

LSPD





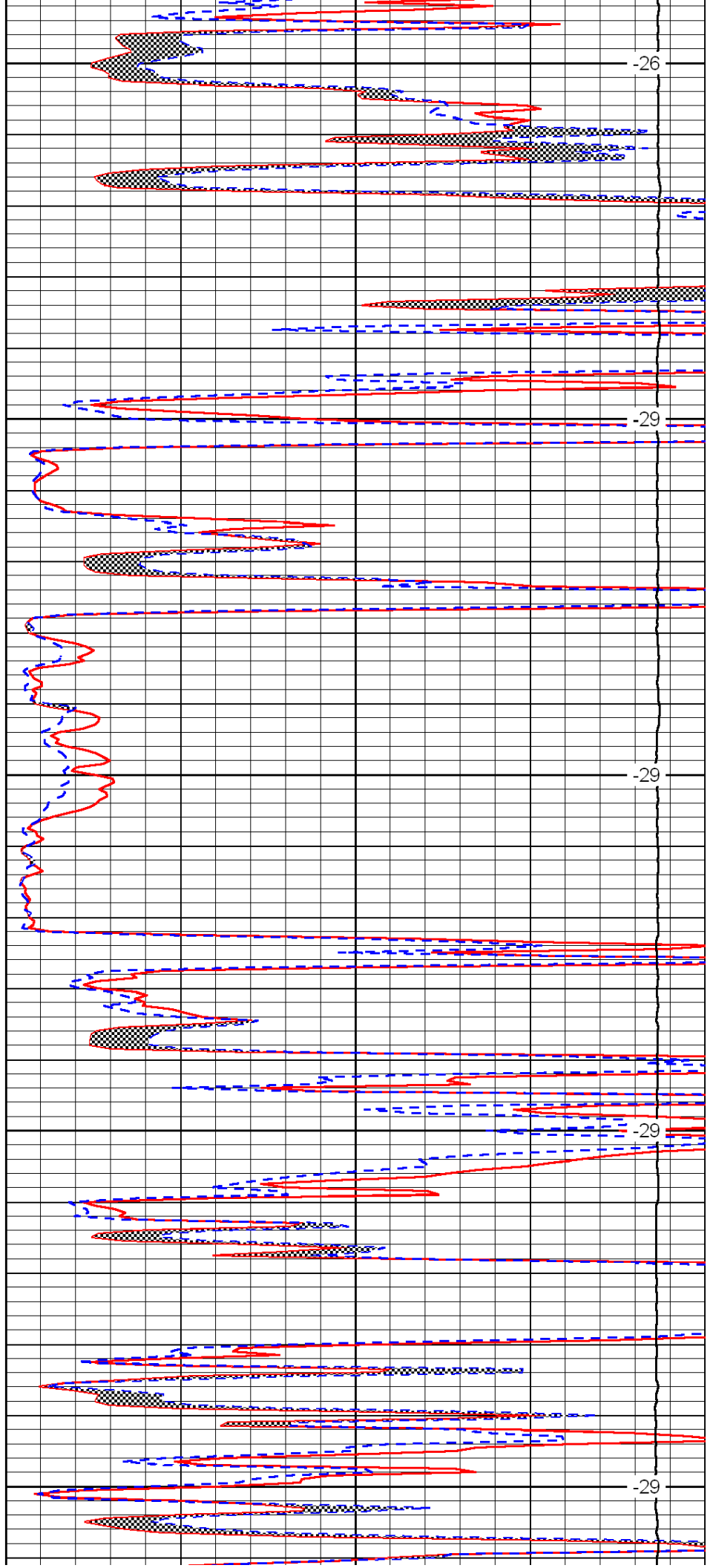
3000

3050

3100

3150

3200



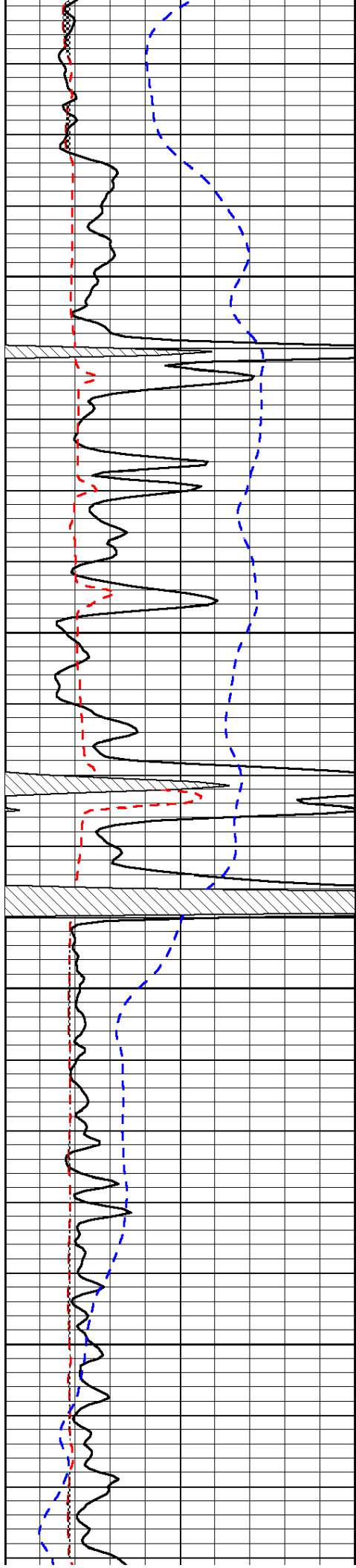
-26

-29

-29

-29

-29

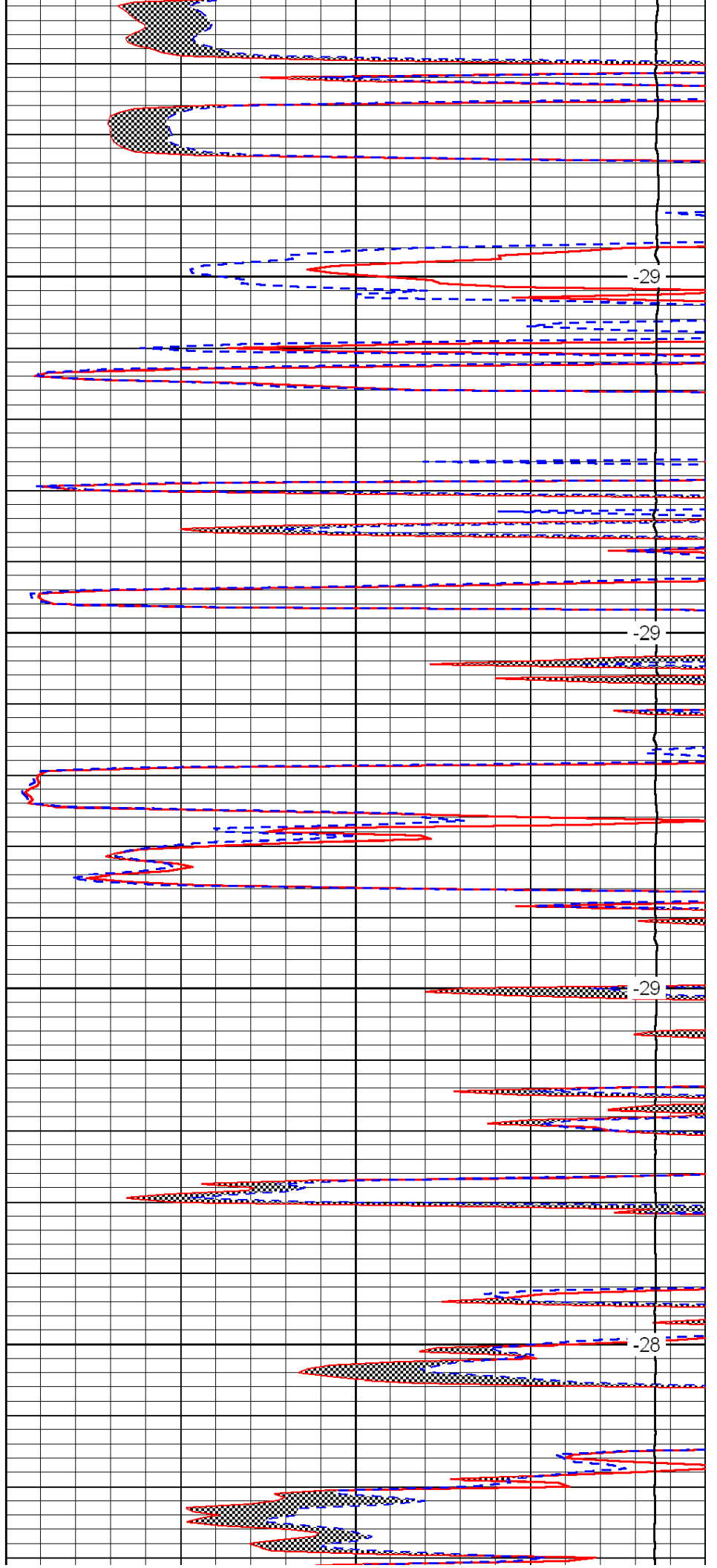


3250

3300

3350

3400



-29

-29

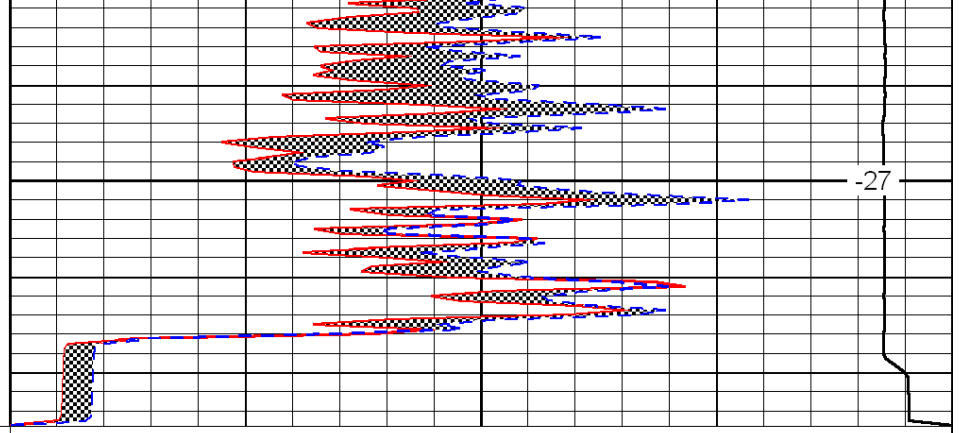
-29

-28



| | | |
|------|--------------------------|-----|
| 0 | Gamma Ray | 150 |
| 6 | Micro Log Caliper (GAPI) | 16 |
| -200 | SP (mV) | 0 |

3450



| | | |
|-------|---------------------|----|
| 0 | Micro Inverse 1 X 1 | 40 |
| 0 | Micro Normal 2'' | 40 |
| 15000 | Line Weight | 0 |

-27

LSPD