



Dual Induction Log

DIGITAL LOG (785) 625-3858

15-009-25651-00-00

API No.

Company L.D. Drilling, Inc.

Well Salvino #2-19

Field Trapp

County Barton State Kansas

Location SE SW NW NE  
1070' FNL & 2300' FEL

Sec: 19 Twp: 16S Rge: 13W

Permanent Datum Ground Level Elevation 1944

Log Measured From Kelly Bushing 5 Ft. Above Perm. Datum

Drilling Measured From Kelly Bushing

Other Services  
CNL/CDL  
MEL

Elevation  
K.B. 1949  
D.F. 1944  
G.L. 1944

Date 1/29/2012

Run Number One

Depth Driller 3470

Depth Logger 3469

Bottom Logged Interval 3468

Top Log Interval 450

Casing Driller 8.625 @ 497

Casing Logger 493

Bit Size 7.875

Type Fluid in Hole Chemical

Salinity, ppm CL 6000

Density / Viscosity 9.3 52

pH / Fluid Loss 10.0 10.4

Source of Sample Flowline

Rm @ Meas. Temp 0.53 @ 50

Rmf @ Meas. Temp 0.40 @ 50

Rmc @ Meas. Temp 0.72 @ 50

Source of Rmf / Rmc Charts

Rm @ BHT 0.24 @ 111

Operating Rig Time 4 Hours

Max Rec. Temp. F 111

Equipment Number 10

Location Hays

Recorded By D. Schmidt

Witnessed By J. Austin

<<< Fold Here >>>

All interpretations are opinions based on inferences from electrical or other measurements and we cannot and do not guarantee the accuracy or correctness of any interpretation, and we shall not, except in the case of gross or willful negligence on our part, be liable or responsible for any loss, costs, damages, or expenses incurred or sustained by anyone resulting from any interpretation made by any of our officers, agents or employees. These interpretations are also subject to our general terms and conditions set out in our current Price Schedule.

Comments

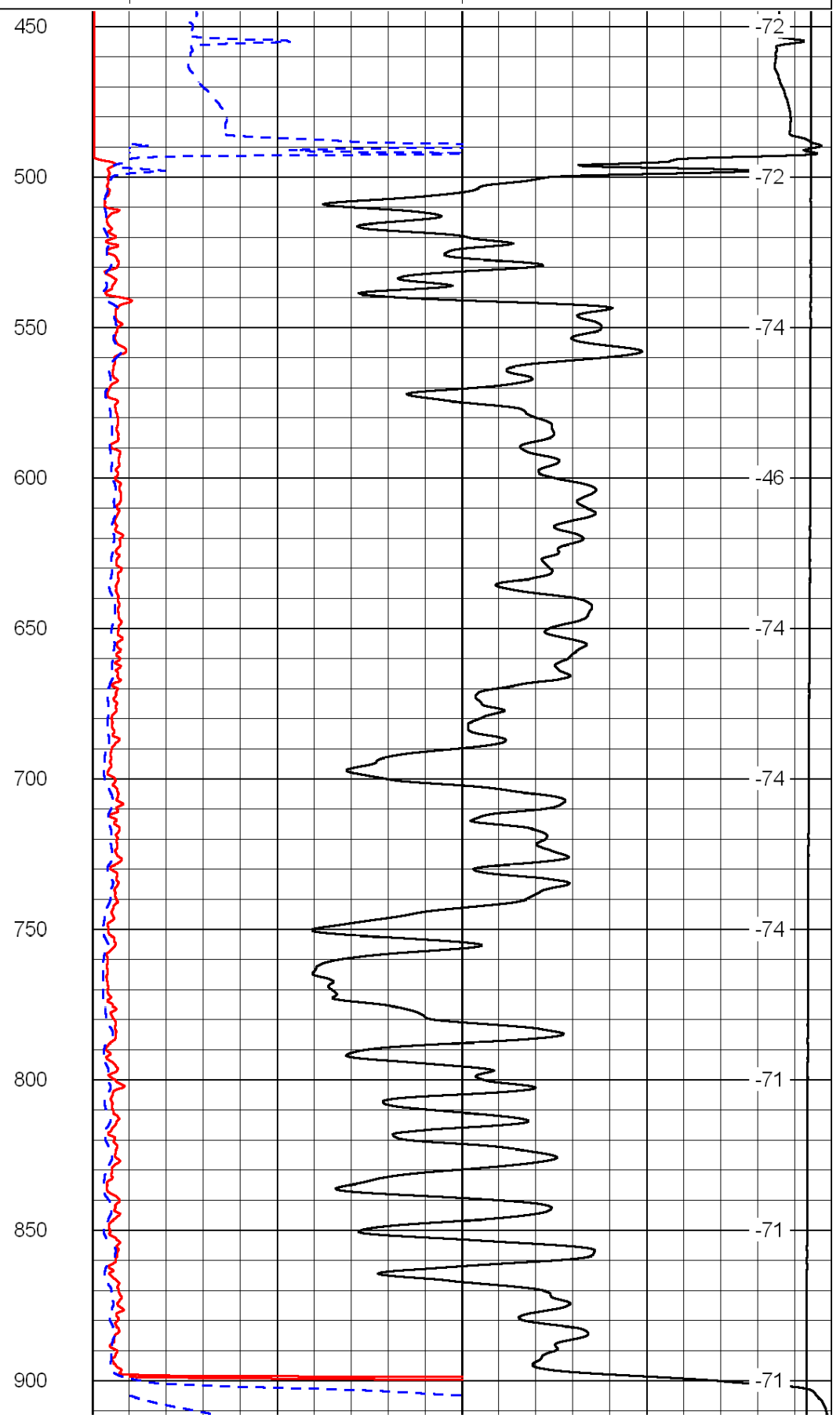
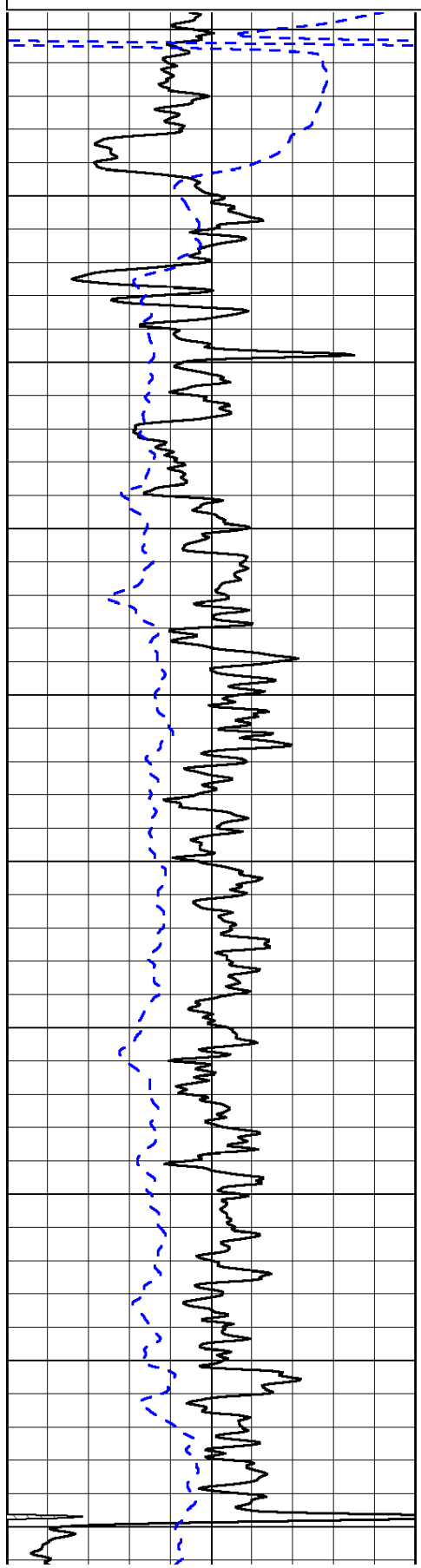
Thank you for using Log-Tech, Inc.  
(785) 625-3858  
  
Susank,  
1 W, 1 N, 1/2 W,  
S into

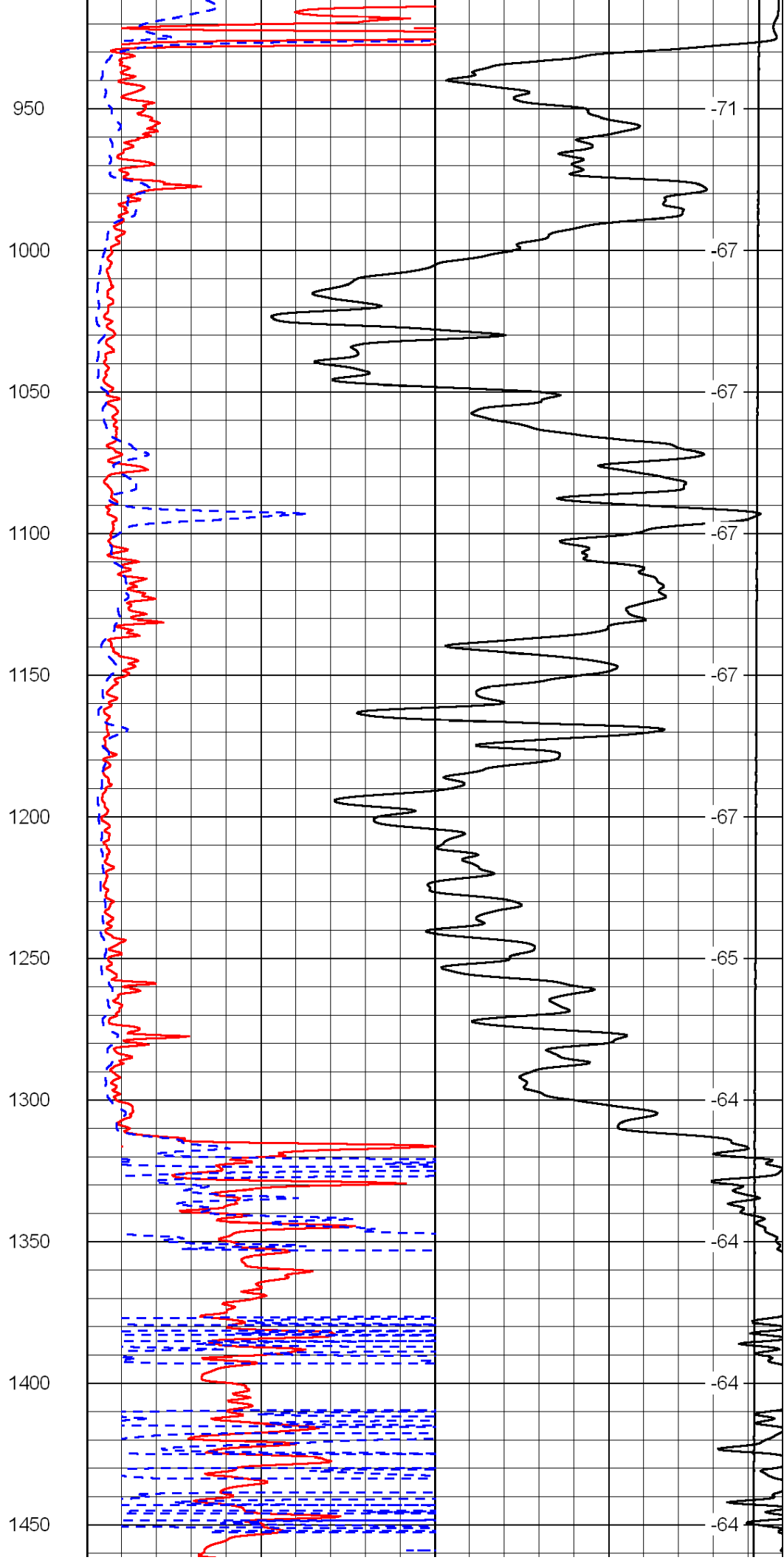
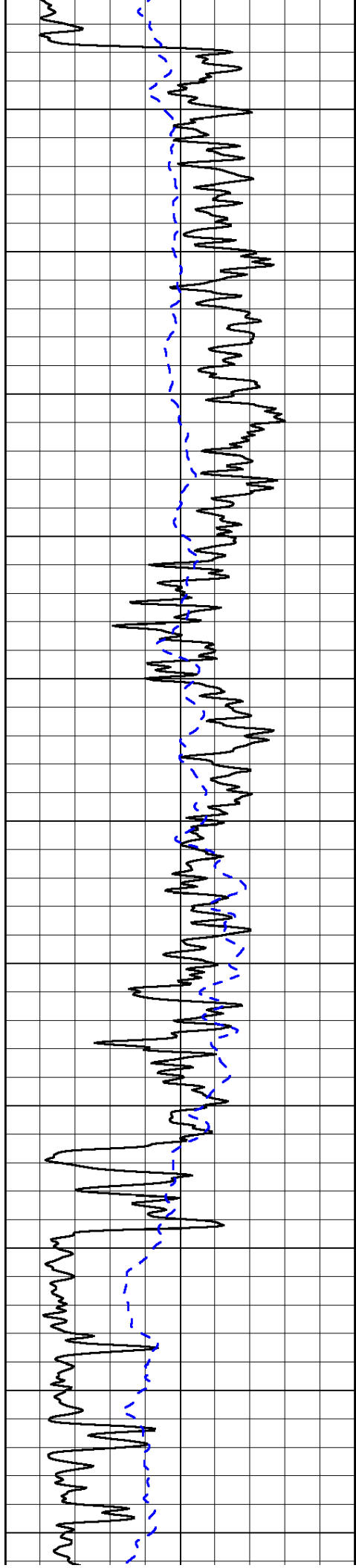
Database File: c:\warrior\data\ld drilling\_salvino #2-19\lds salvino\_2-19hd2.db  
Dataset Pathname: dil\ldstack  
Presentation Format: dil2in  
Dataset Creation: Mon Jan 30 13:11:44 2012  
Charted by: Depth in Feet scaled 1:600

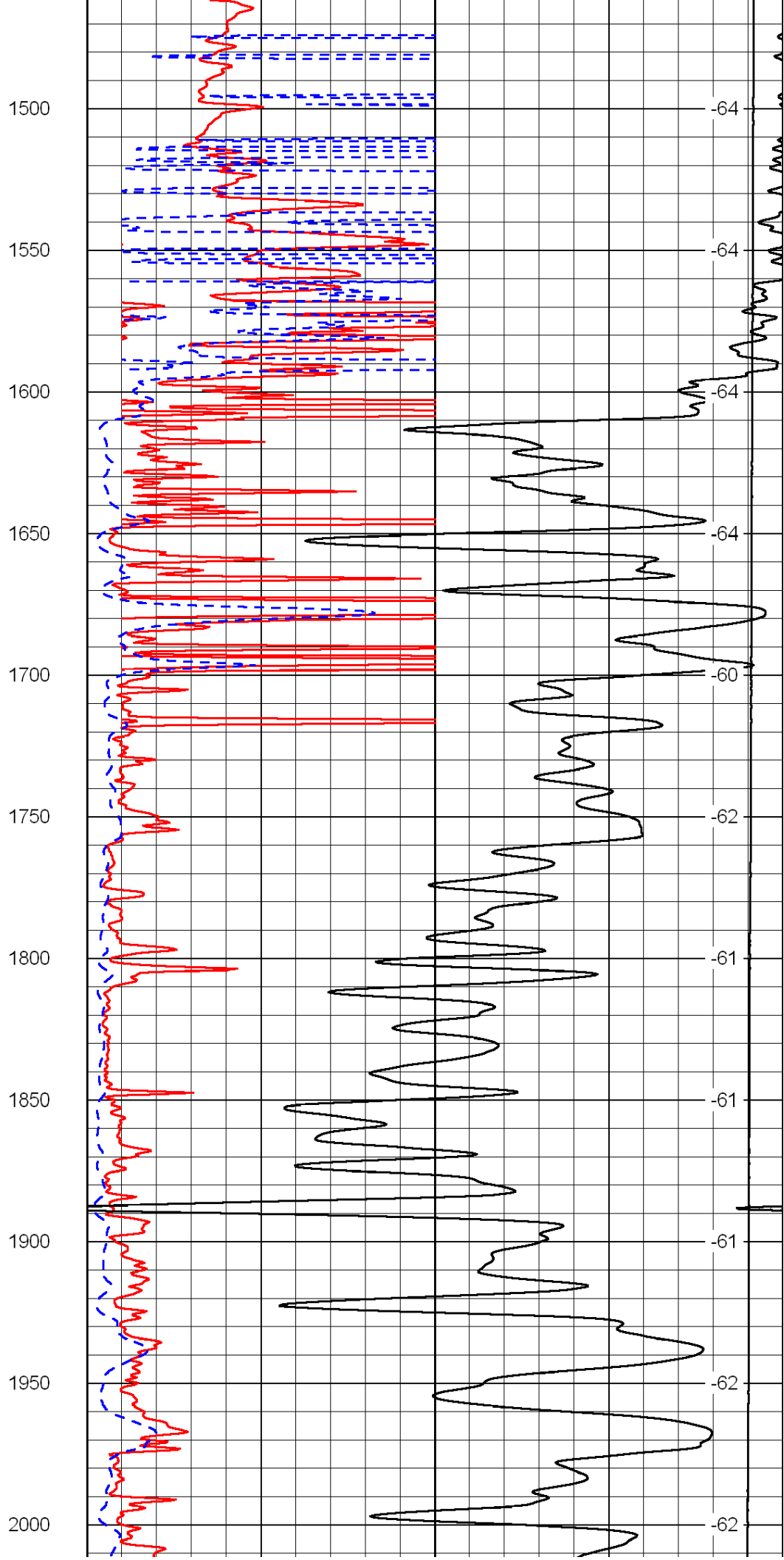
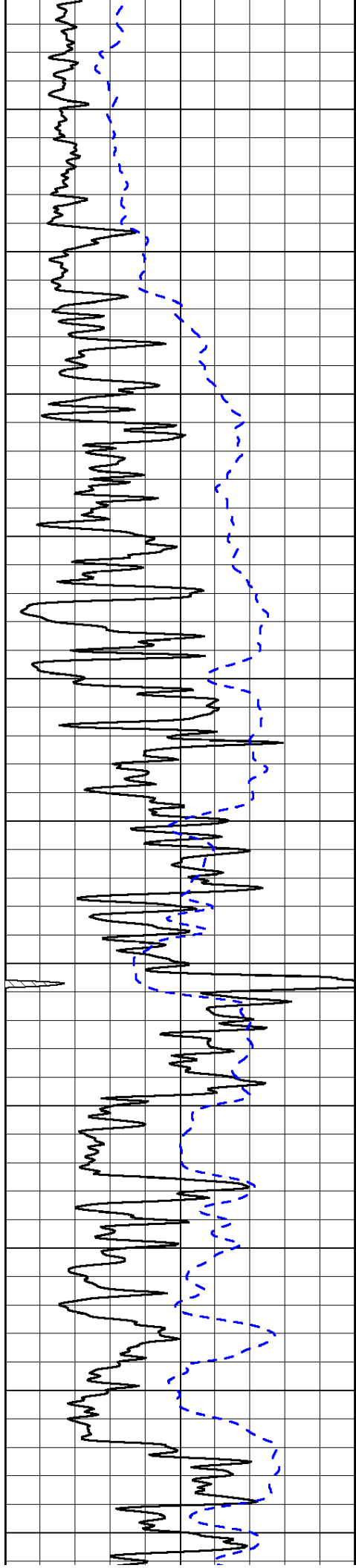
0	Gamma Ray	150
-200	SP (mV)	0

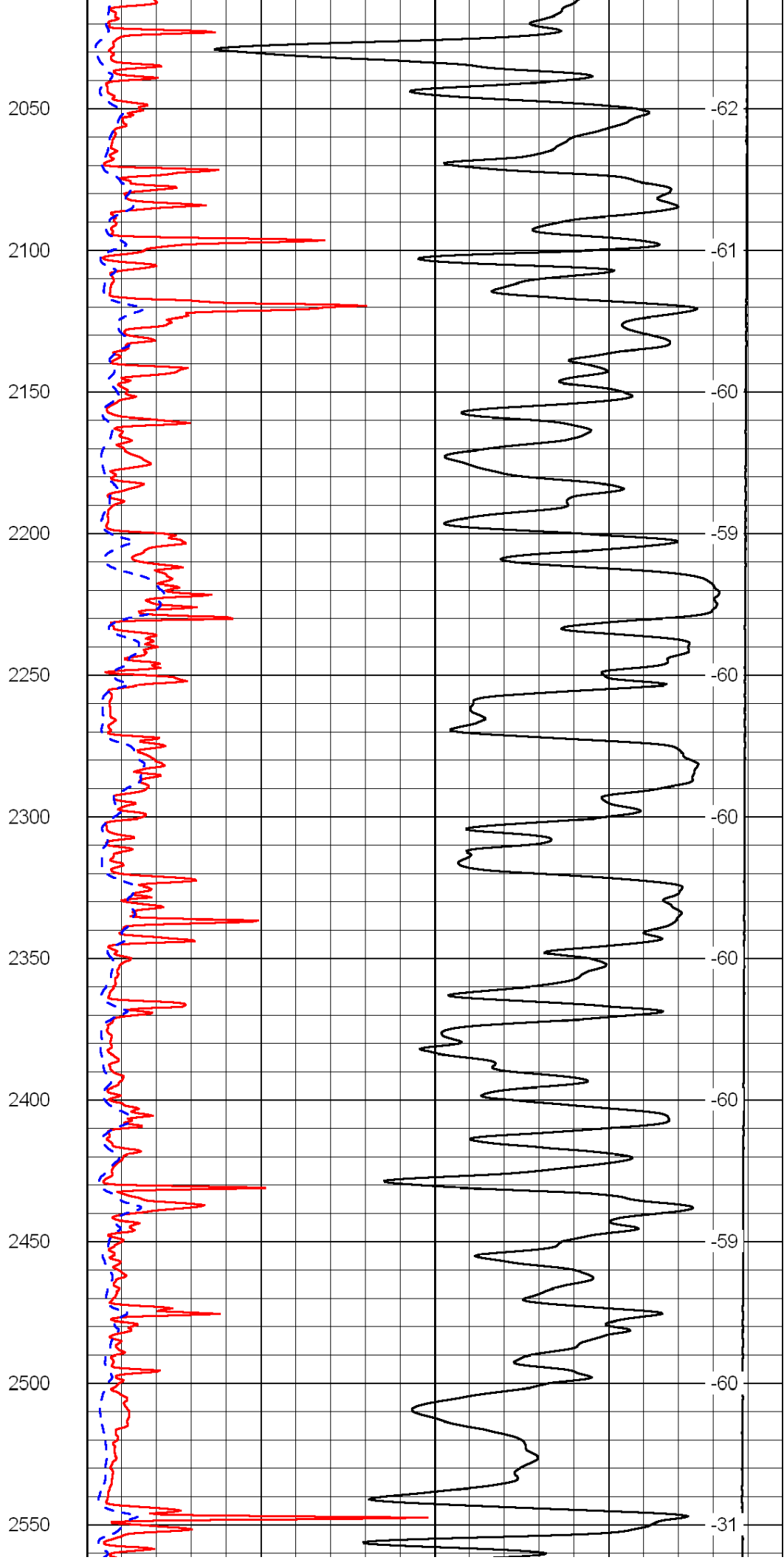
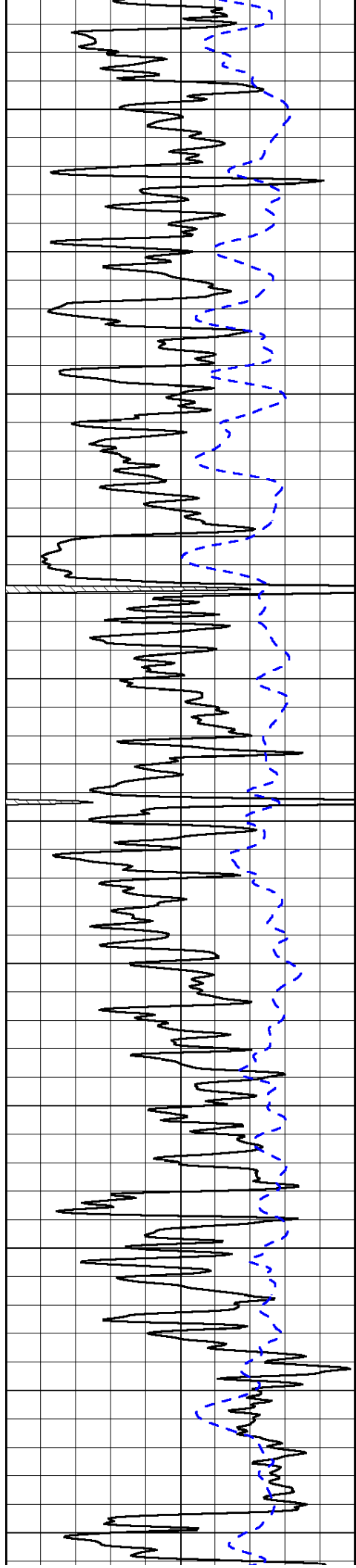
0	Shallow Resistivity	50
0	Deep Resistivity	50
1000	Conductivity	0
15000	Line Tension	0
50	Shallow Resistivity	500
50	Deep Resistivity	500

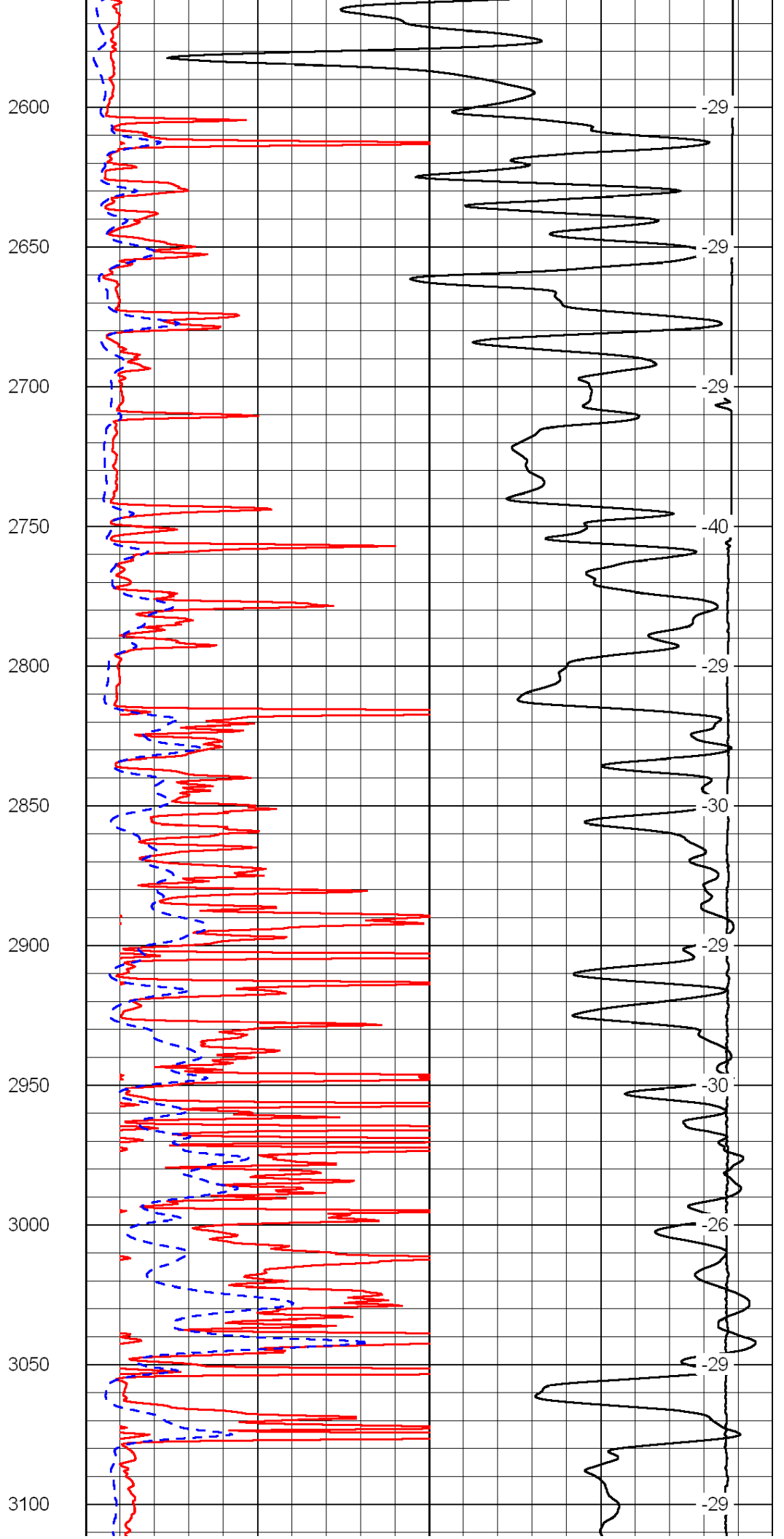
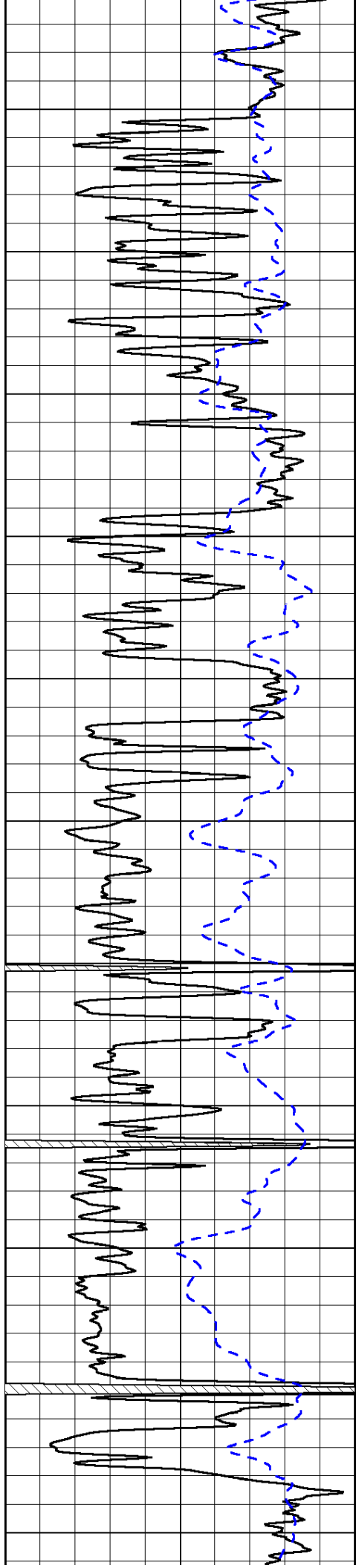
LSPD

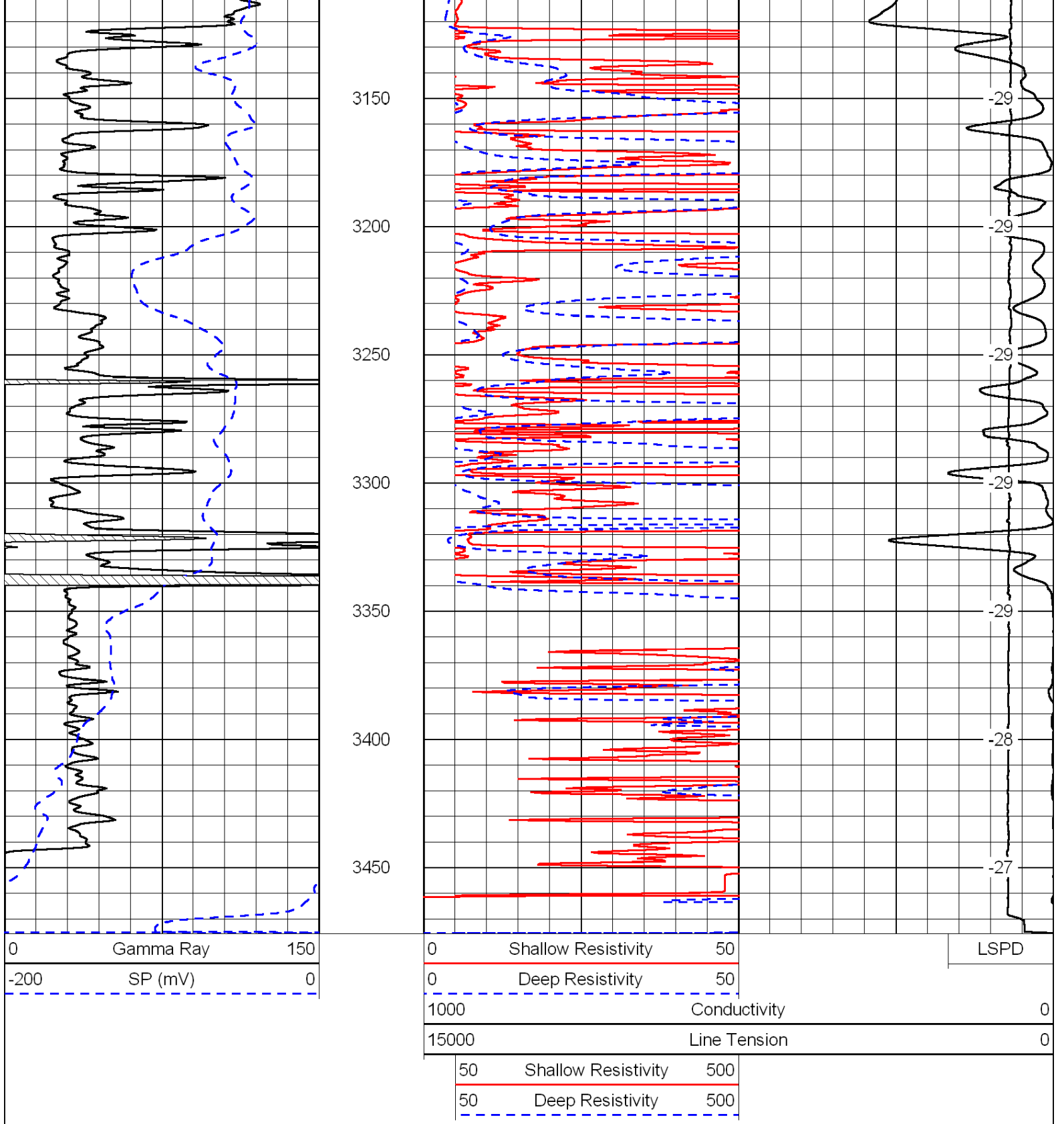




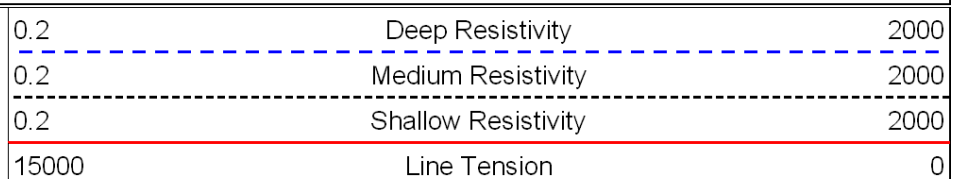
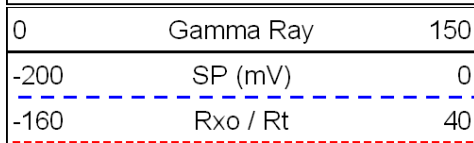


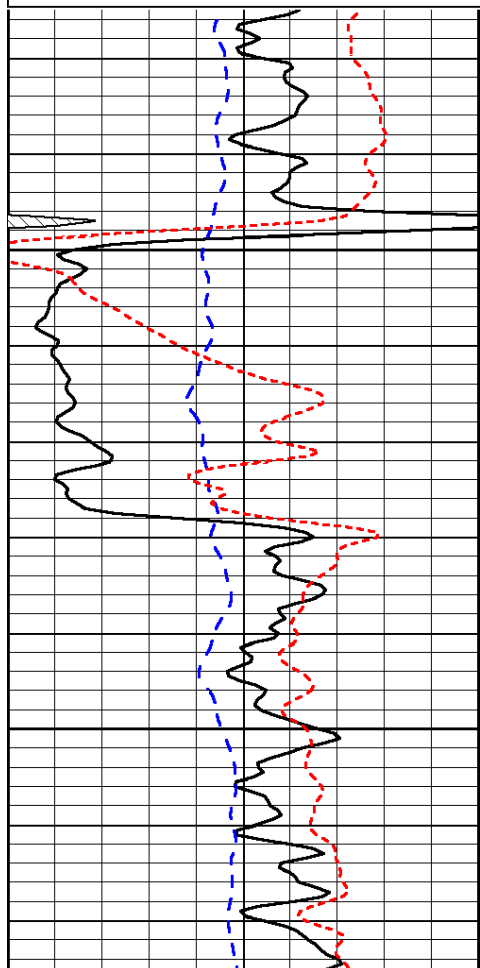






Database File: c:\warrior\data\ld drilling\_salvino #2-19\lds salvino\_2-19hd2.db  
 Dataset Pathname: dil/ldstack  
 Presentation Format: dil  
 Dataset Creation: Mon Jan 30 13:11:44 2012  
 Charted by: Depth in Feet scaled 1:240

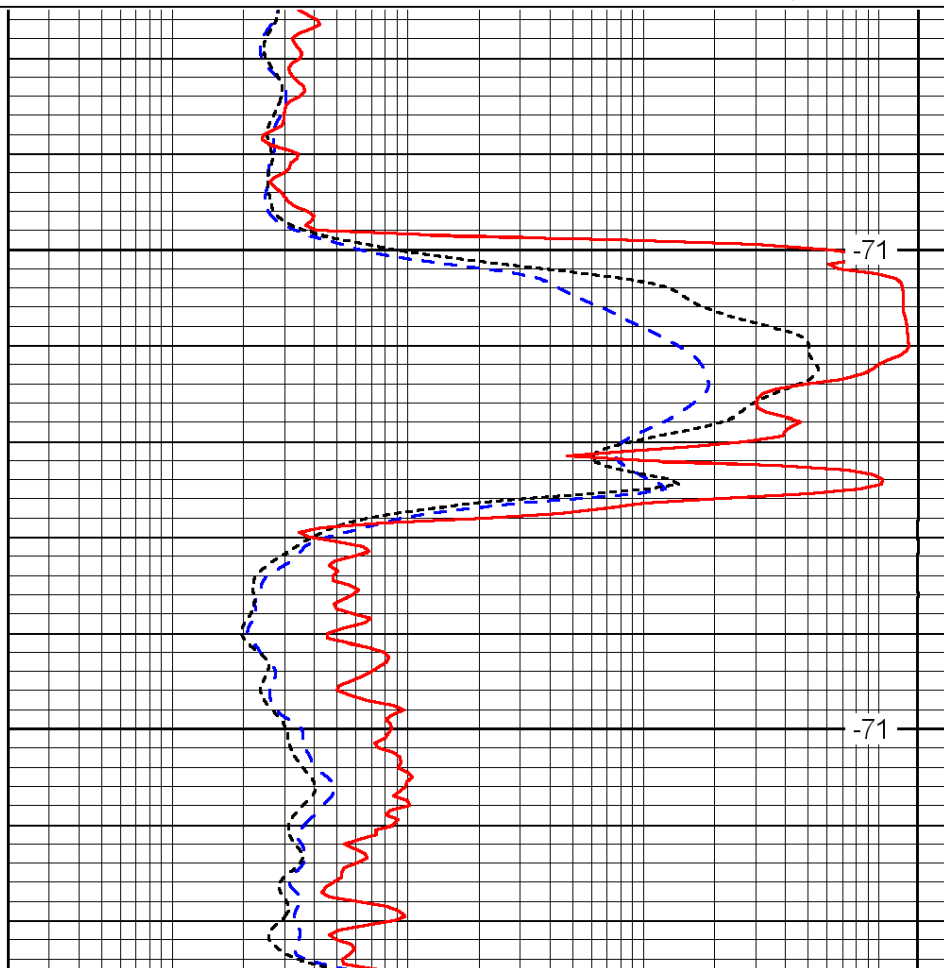




900

950

0	Gamma Ray	150
-200	SP (mV)	0
-160	Rxo / Rt	40



-71

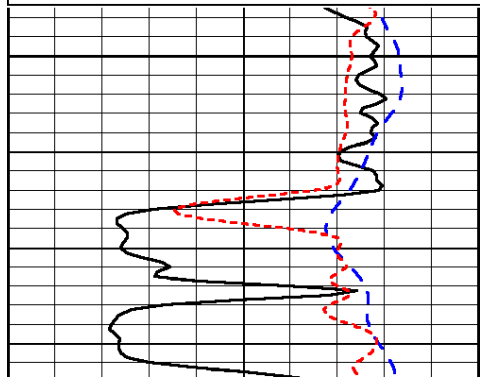
-71

0.2	Deep Resistivity	2000
0.2	Medium Resistivity	2000
0.2	Shallow Resistivity	2000
15000	Line Tension	0

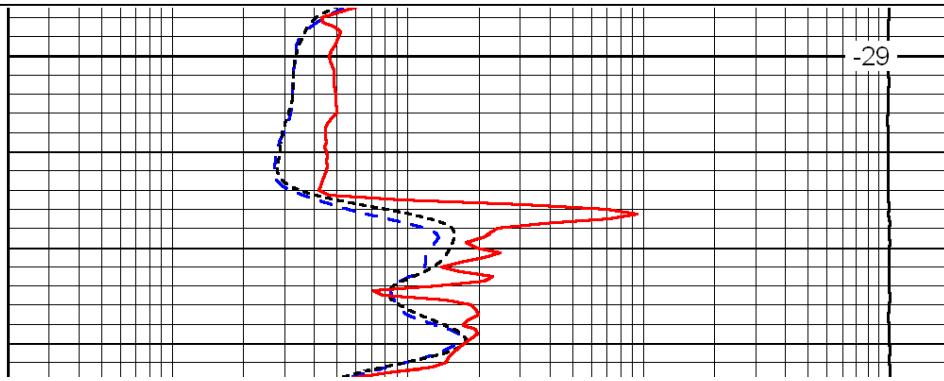
Database File: c:\warrior\data\ld drilling\_salvino #2-19\lds salvino\_2-19hd2.db  
 Dataset Pathname: dil\ldstack  
 Presentation Format: dil  
 Dataset Creation: Mon Jan 30 13:11:44 2012  
 Charted by: Depth in Feet scaled 1:240

0	Gamma Ray	150
-200	SP (mV)	0
-160	Rxo / Rt	40

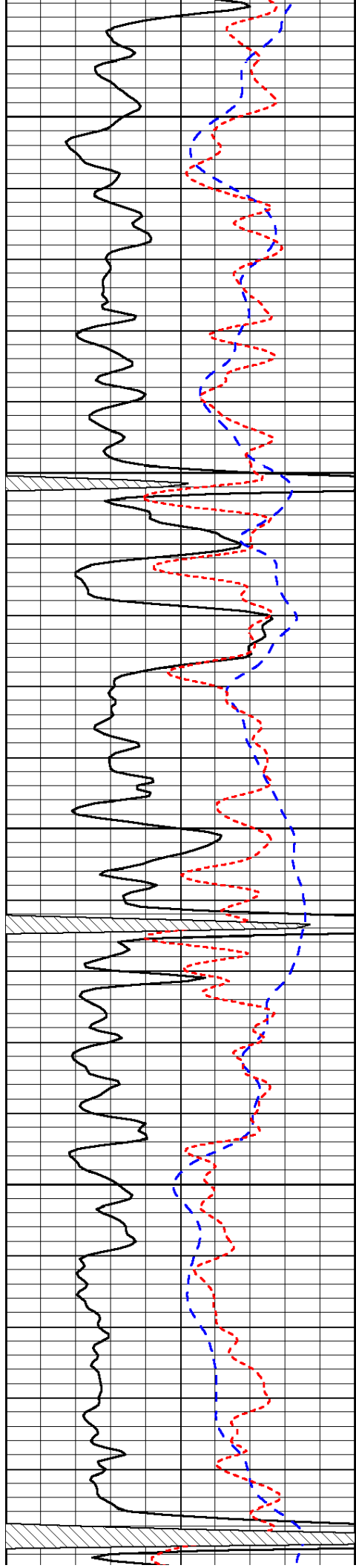
0.2	Deep Resistivity	2000
0.2	Medium Resistivity	2000
0.2	Shallow Resistivity	2000
15000	Line Tension	0



2800



-29



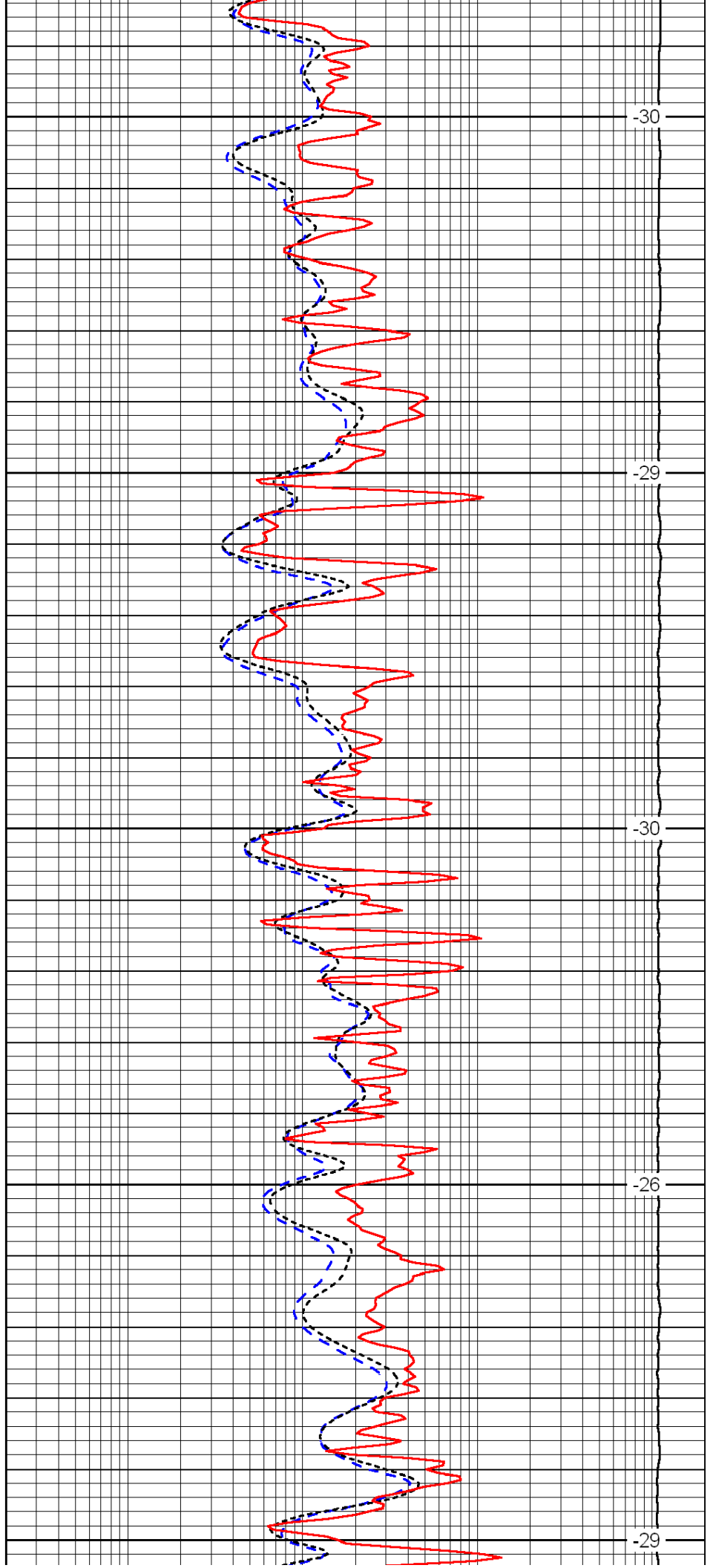
2850

2900

2950

3000

3050



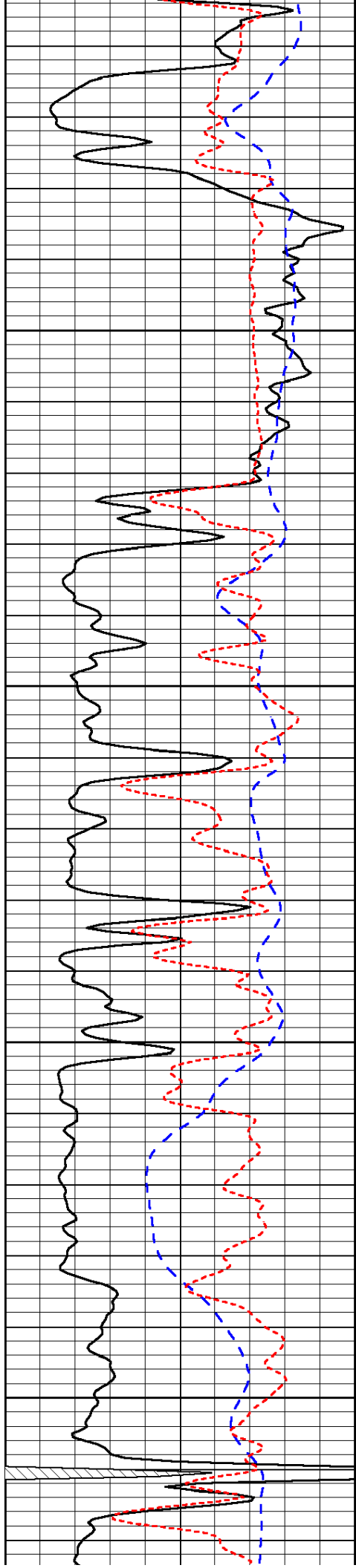
-30

-29

-30

-26

-29

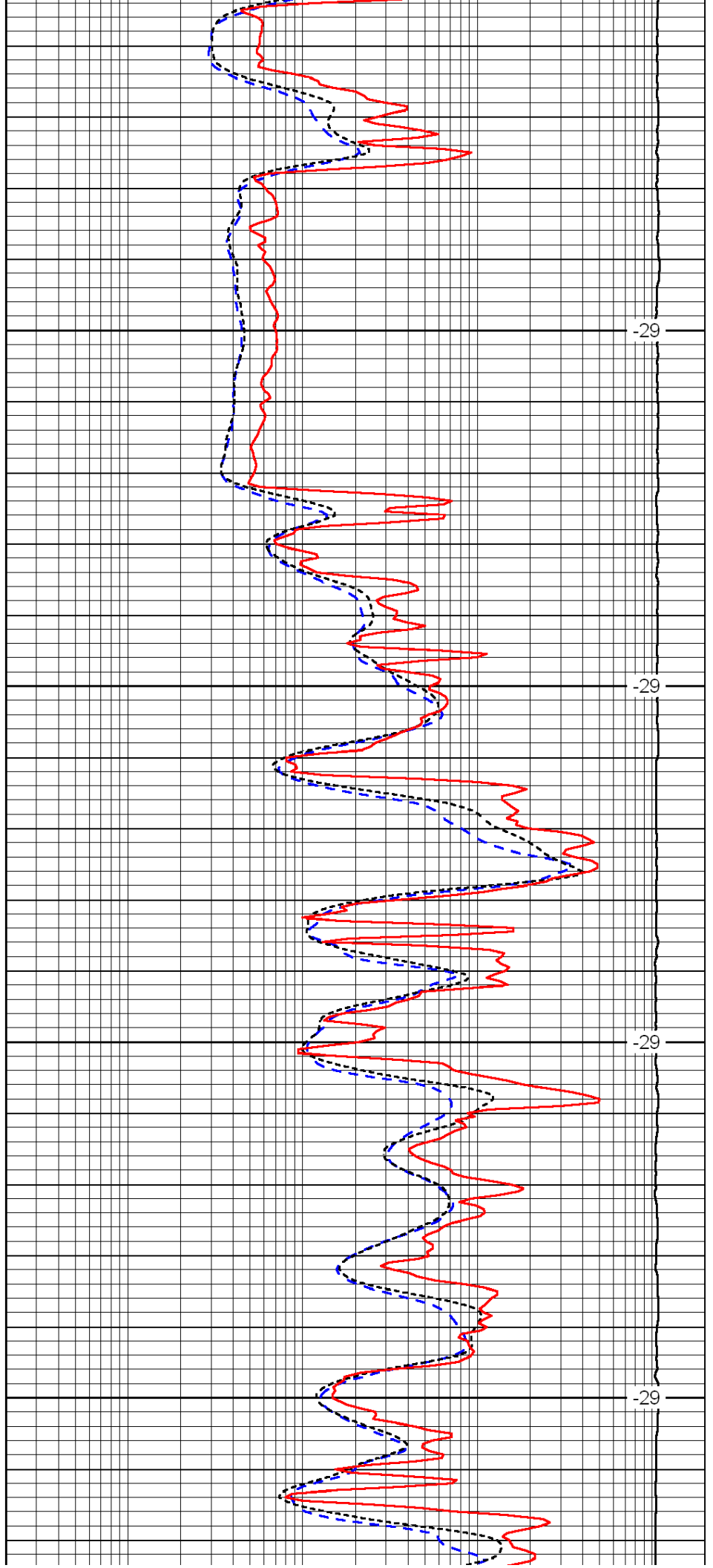


3100

3150

3200

3250

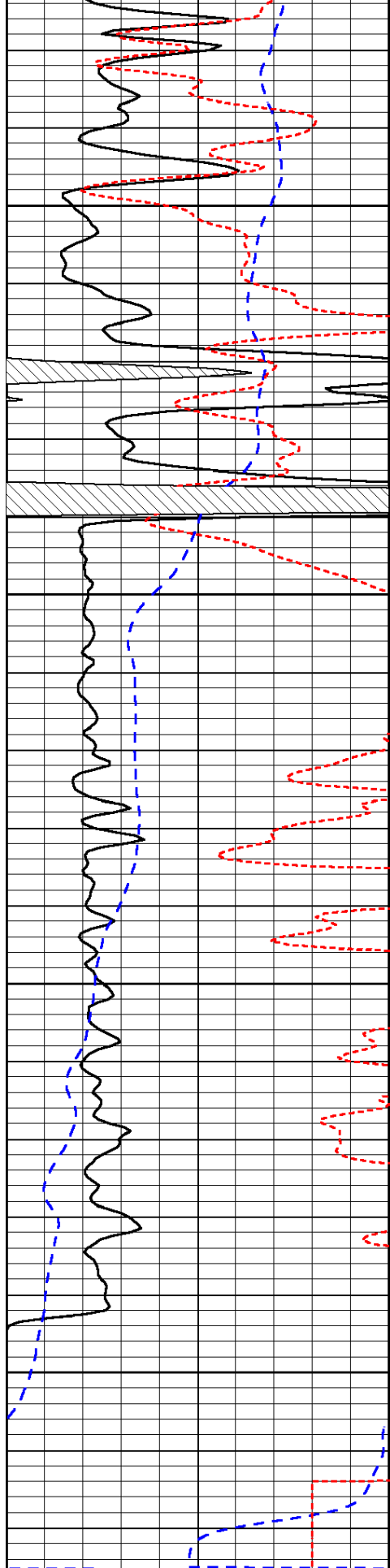


-29

-29

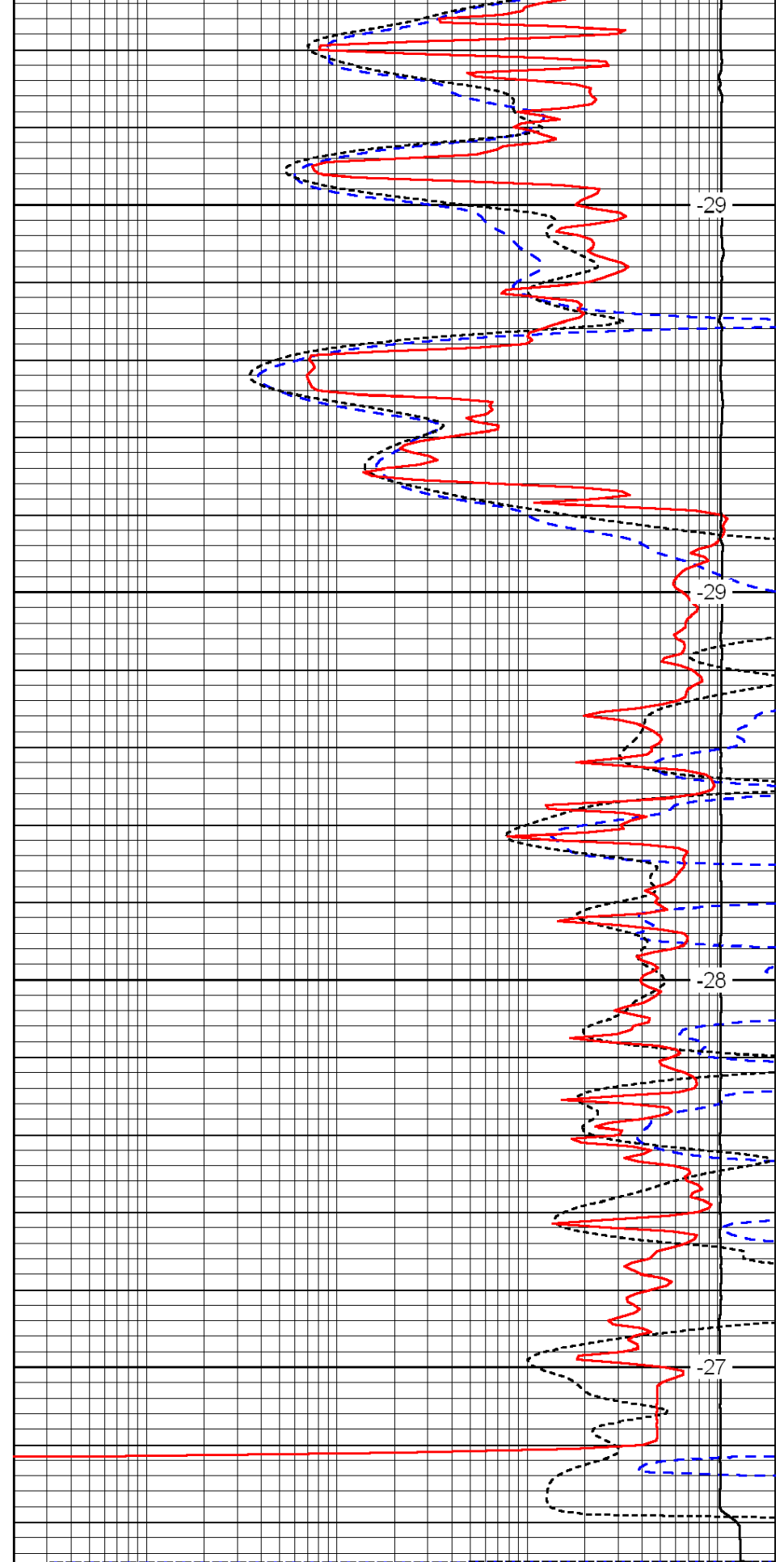
-29

-29



0	Gamma Ray	150
-200	SP (mV)	0
-160	Rxo / Rt	40

3300  
3350  
3400  
3450



0.2	Deep Resistivity	2000
0.2	Medium Resistivity	2000
0.2	Shallow Resistivity	2000
15000	Line Tension	0

-29  
-29  
-28  
-27

