



# Dual Induction Log

DIGITAL LOG (785) 625-3858

API No. 15-159-22,672-00-00

Company	American Warrior, Inc.	Location	SW SW NE NE 1275' FNL & 1100' FEL	Other Services	DIL MEL
Well	Kathy No. 2-24	County	Rice	State	Kansas
Field	Chase-Silica				
Permament Datum	Ground Level	Log Measured From	Kelly Bushing	Elevation	1739
Drilling Measured From	Kelly Bushing	Drilling Measured From	Kelly Bushing	8 Ft. Above Perm. Datum	
Date	12/19/2011	Sec: 24	Twp: 19 S	Rge: 10 W	Elevation K.B. 1747 D.F. G.L. 1739

Run Number	One
Depth Driller	3400
Depth Logger	3402
Bottom Logged Interval	3381
Top Log Interval	2600
Casing Driller	8.625 @ 357
Casing Logger	352
Bit Size	7.875
Type Fluid in Hole	Chemical
Salinity, ppm CL	7.100
Density / Viscosity	9.5   53
pH / Fluid Loss	10.5   9.6
Source of Sample	Flowline
Rm @ Meas. Temp	.55 @ 60
Rmf @ Meas. Temp	.41 @ 60
Rmc @ Meas. Temp	.74 @ 60
Source of Rmf / Rmc	Charts
Rm @ BHT	.29 @ 112
Operating Rig Time	4 Hours
Max Rec. Temp. F	112
Equipment Number	91
Location	Hays
Recorded By	K. Bange
Witnessed By	Josh Austin

<<< Fold Here >>>

All interpretations are opinions based on inferences from electrical or other measurements and we cannot and do not guarantee the accuracy or correctness of any interpretation, and we shall not, except in the case of gross or willful negligence on our part, be liable or responsible for any loss, costs, damages, or expenses incurred or sustained by anyone resulting from any interpretation made by any of our officers, agents or employees. These interpretations are also subject to our general terms and conditions set out in our current Price Schedule.

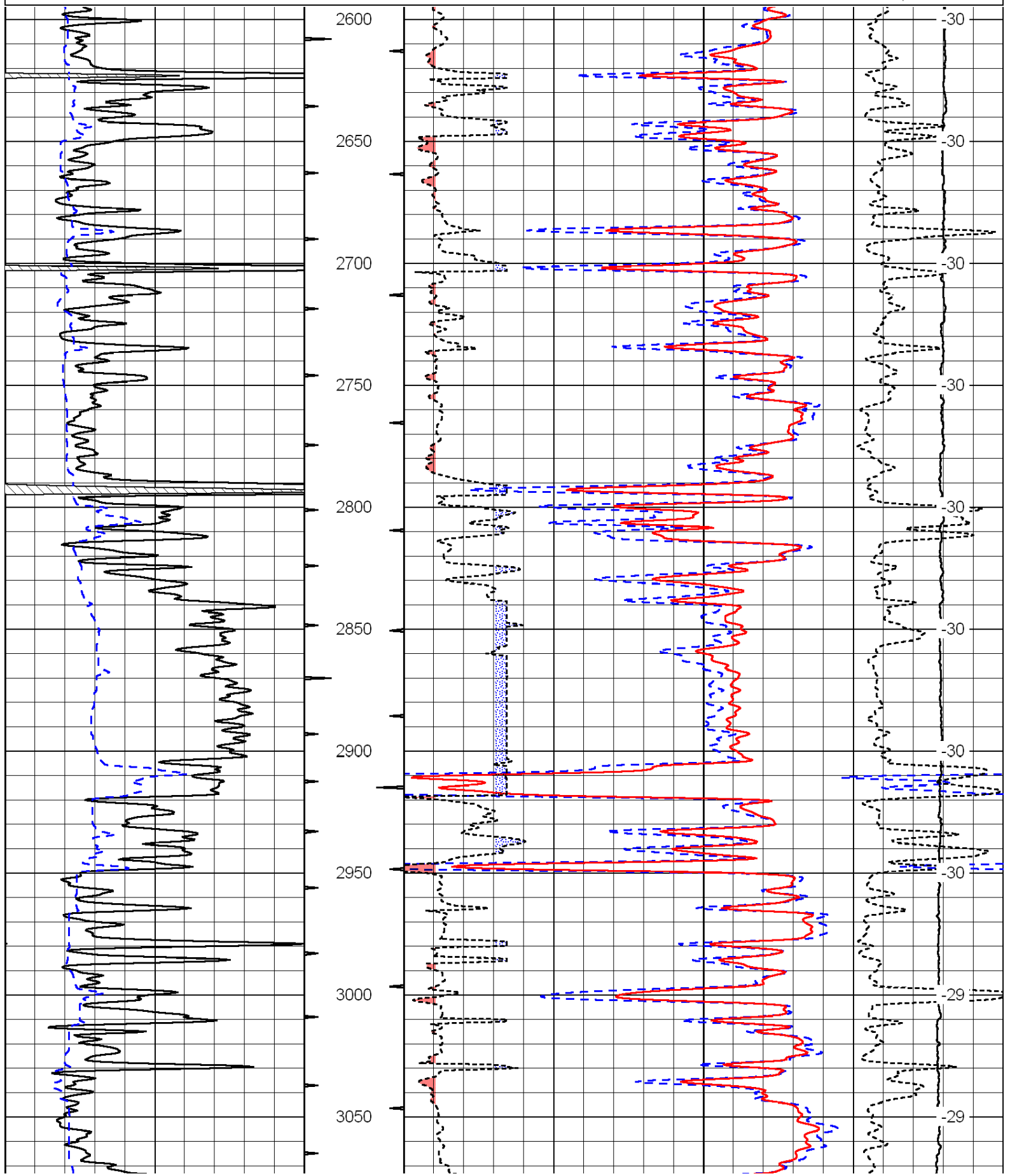
### Comments

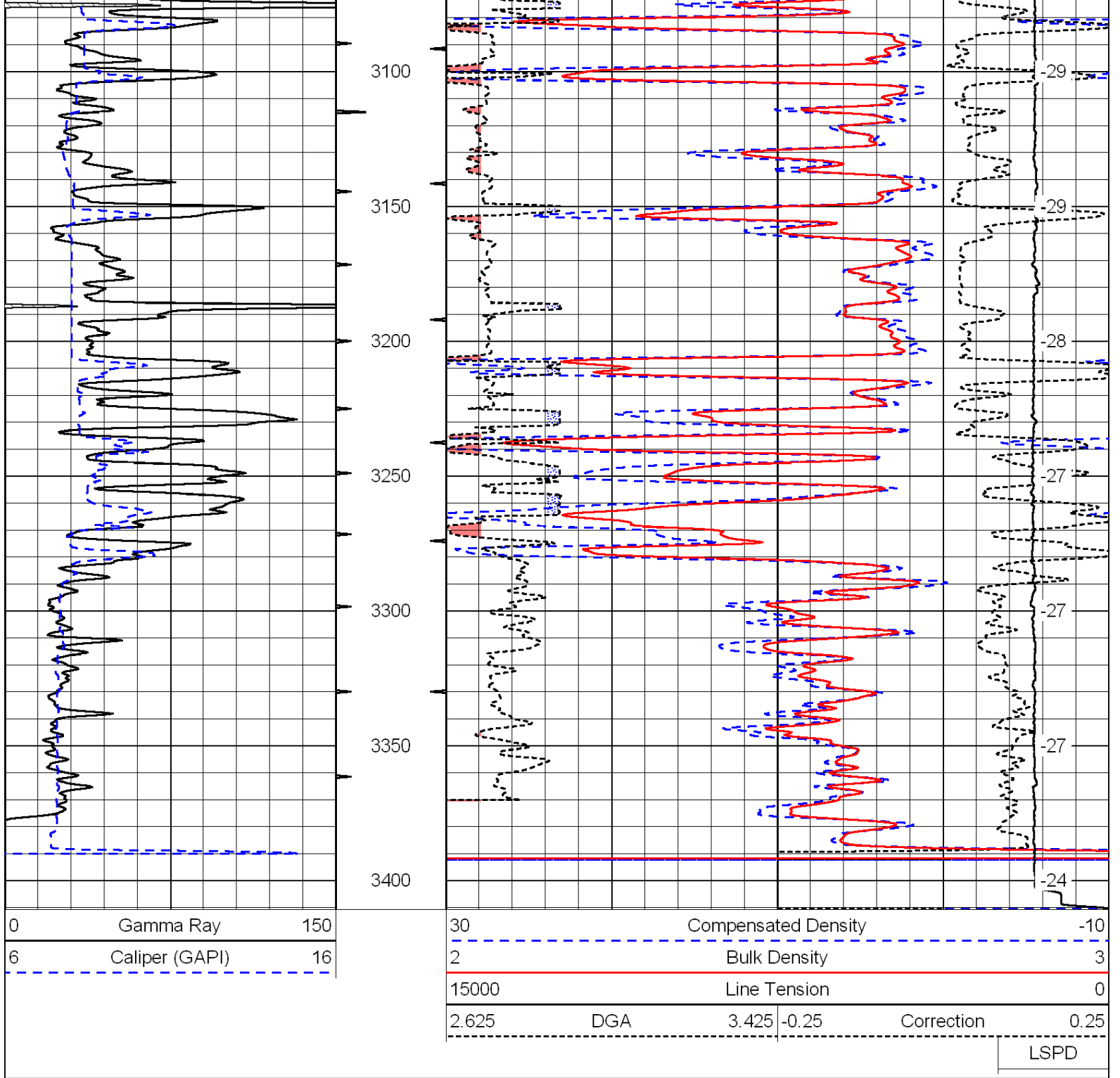
Thank you for using Log-Tech, Inc.  
(785) 625-3858

Chase, KS, 1 W, 2 1/2 N, W into

0	Gamma Ray	150
6	Caliper (GAPI)	16

30	Compensated Density		-10
2	Bulk Density		3
15000	Line Tension		0
2.625	DGA	3.425	-0.25
Correction			0.25
LSPD			





Database File: c:\warrior\data\amwar\_kathy no. 2-24\aw121911hd.db  
 Dataset Pathname: dil/awstack  
 Presentation Format: cndlspec  
 Dataset Creation: Mon Dec 19 08:17:24 2011  
 Charted by: Depth in Feet scaled 1:240

