



Dual Induction Log

DIGITAL LOG (785) 625-3858

15-159-22,672-00-00

API No.

Company American Warrior, Inc.

Well Kathy No. 2-24

Field Chase-Silica

County Rice State Kansas

Location SW SW NE NE
1275' FNL & 1100' FEL

Sec: 24 Twp: 19 S Rge: 10 W

Other Services
CNL/CDL
MEL

Elevation

Permanent Datum Ground Level Elevation 1739
Log Measured From Kelly Bushing 8 Ft. Above Perm. Datum
Drilling Measured From Kelly Bushing

K.B. 1747
D.F. 1739
G.L. 1739

Date	12/19/2011
Run Number	One
Depth Driller	3400
Depth Logger	3402
Bottom Logged Interval	3401
Top Log Interval	350
Casing Driller	8.625 @ 357
Casing Logger	352
Bit Size	7.875
Type Fluid in Hole	Chemical
Salinity, ppm CL	7.100
Density / Viscosity	9.5 53
pH / Fluid Loss	10.5 9.6
Source of Sample	Flowline
Rm @ Meas. Temp	.55 @ 60
Rmf @ Meas. Temp	.41 @ 60
Rmc @ Meas. Temp	.74 @ 60
Source of Rmf / Rmc	Charts
Rm @ BHT	.29 @ 112
Operating Rig Time	4 Hours
Max Rec. Temp. F	112
Equipment Number	91
Location	Hays
Recorded By	K. Bange
Witnessed By	Josh Austin

<<< Fold Here >>>

All interpretations are opinions based on inferences from electrical or other measurements and we cannot and do not guarantee the accuracy or correctness of any interpretation, and we shall not, except in the case of gross or willful negligence on our part, be liable or responsible for any loss, costs, damages, or expenses incurred or sustained by anyone resulting from any interpretation made by any of our officers, agents or employees. These interpretations are also subject to our general terms and conditions set out in our current Price Schedule.

Comments

Thank you for using Log-Tech, Inc.
(785) 625-3858

Chase, KS, 1 W, 2 1/2 N, W into

Database File: c:\warrior\data\amwar_kathy no. 2-24\aw121911hd.db
Dataset Pathname: dil\awstack
Presentation Format: dil2in
Dataset Creation: Mon Dec 19 08:17:24 2011
Charted by: Depth in Feet scaled 1:600

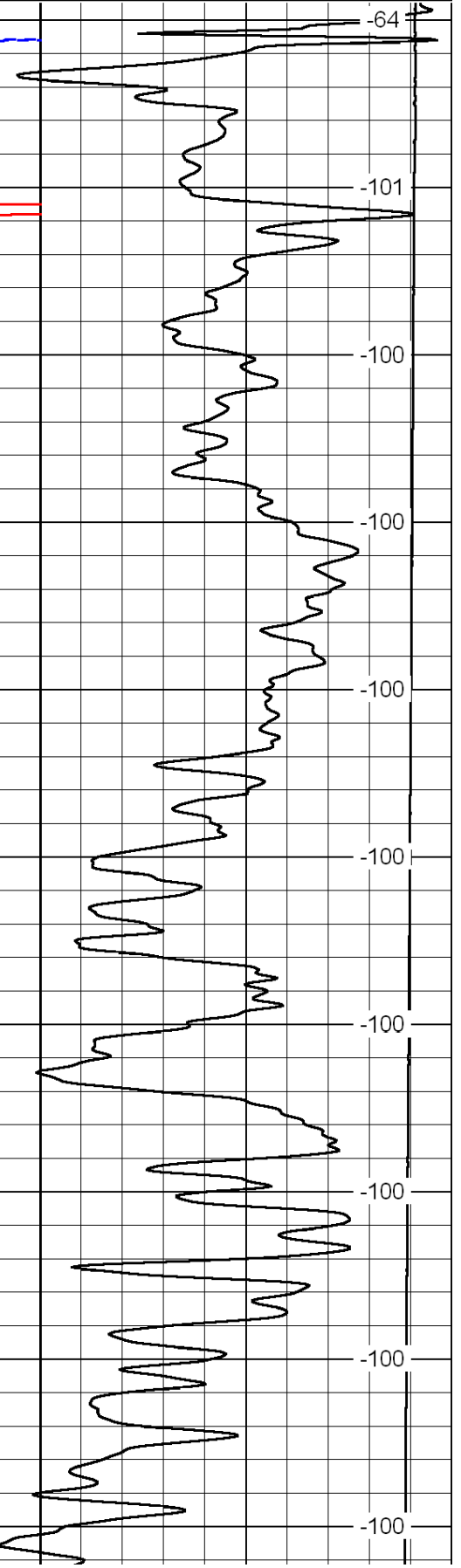
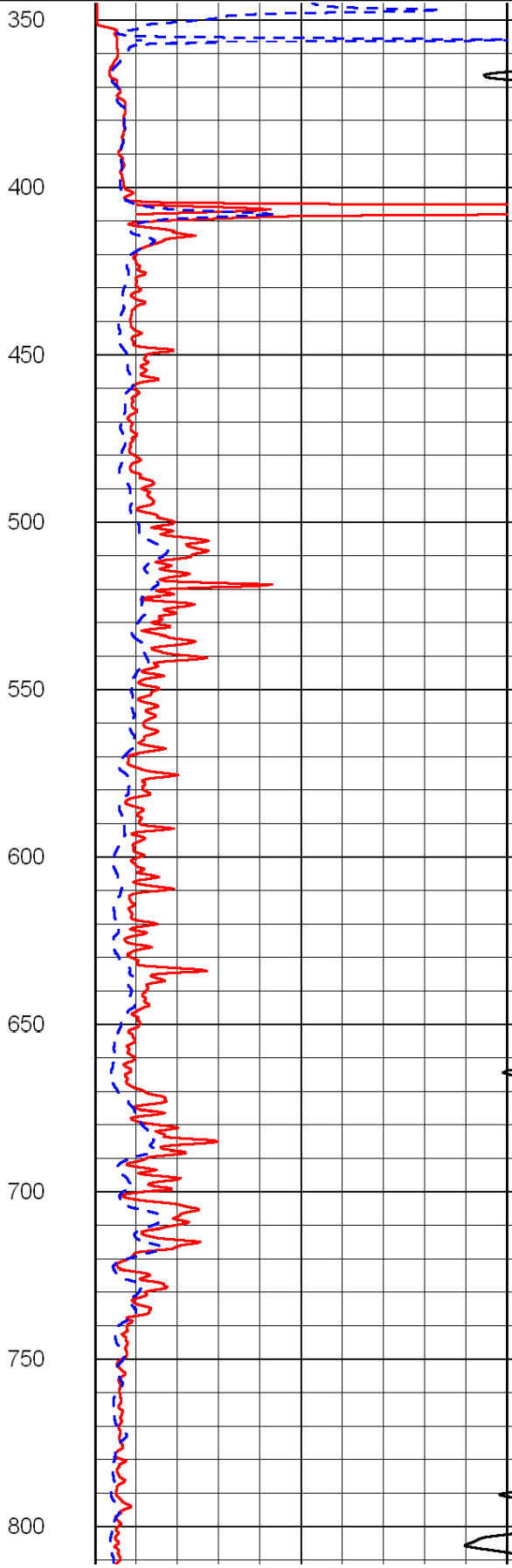
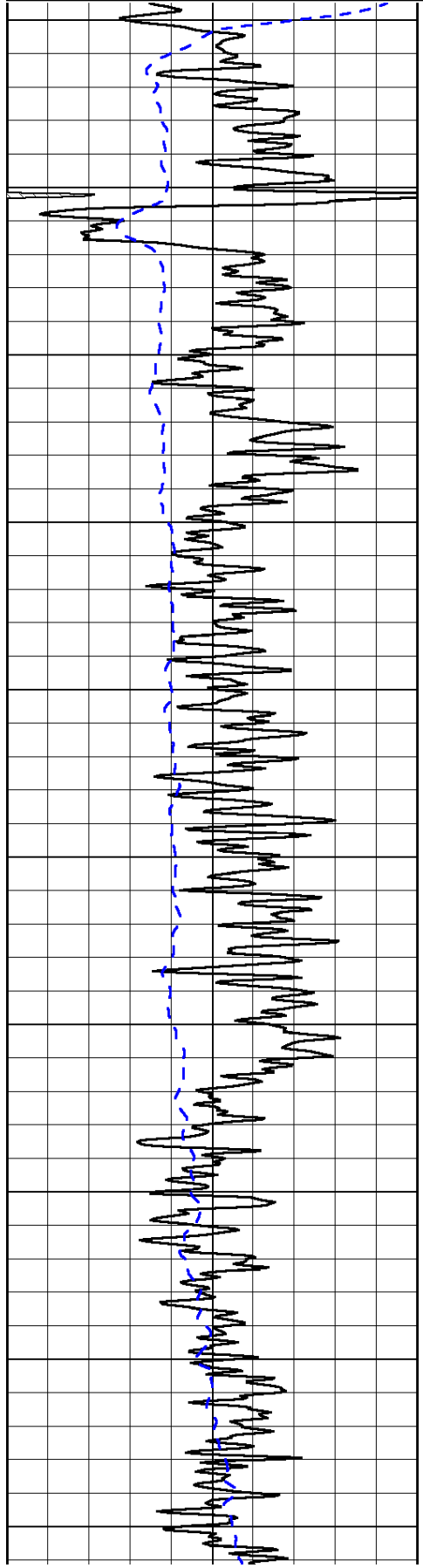
0	Gamma Ray	150
-200	SP (mV)	0

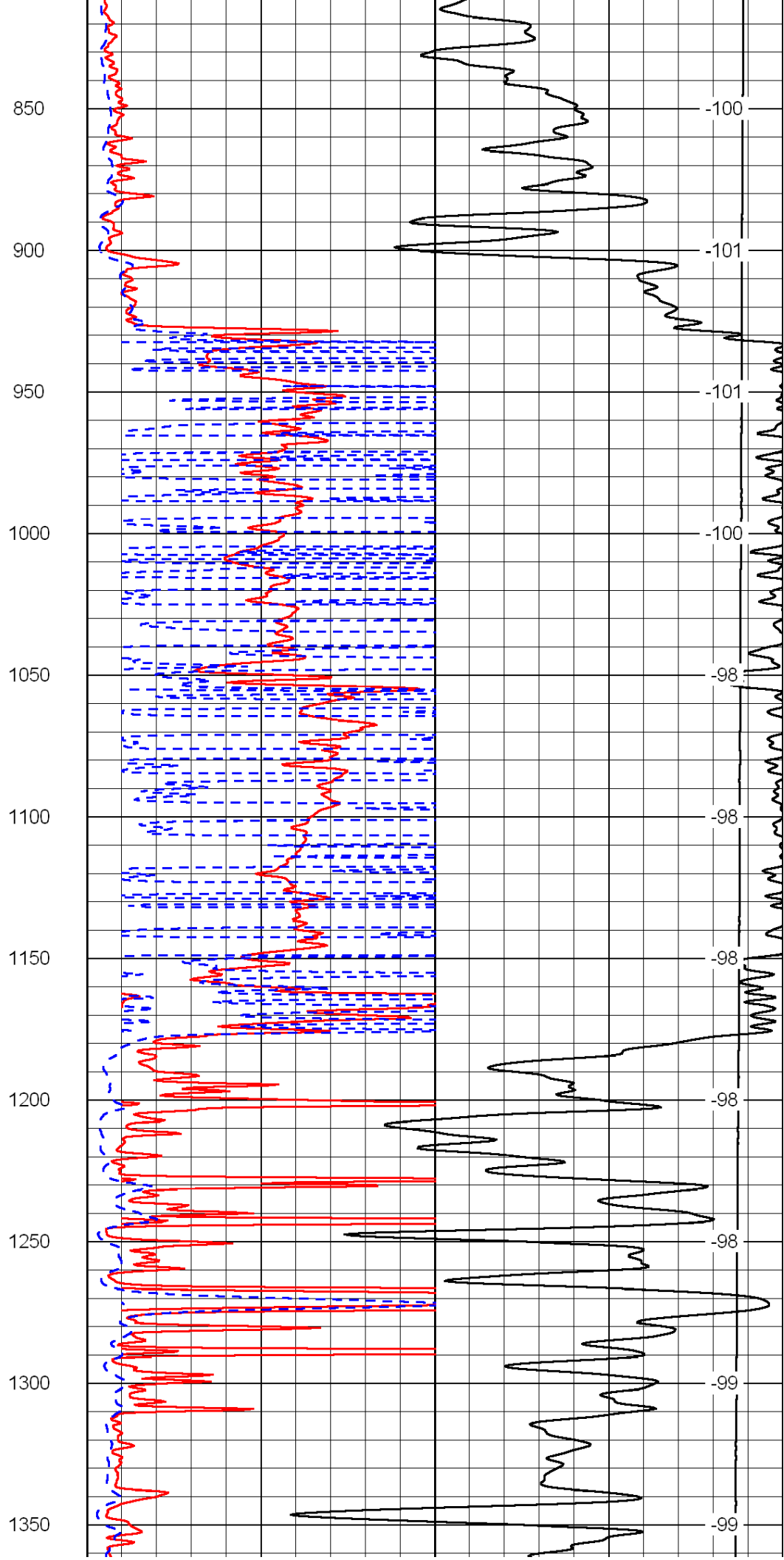
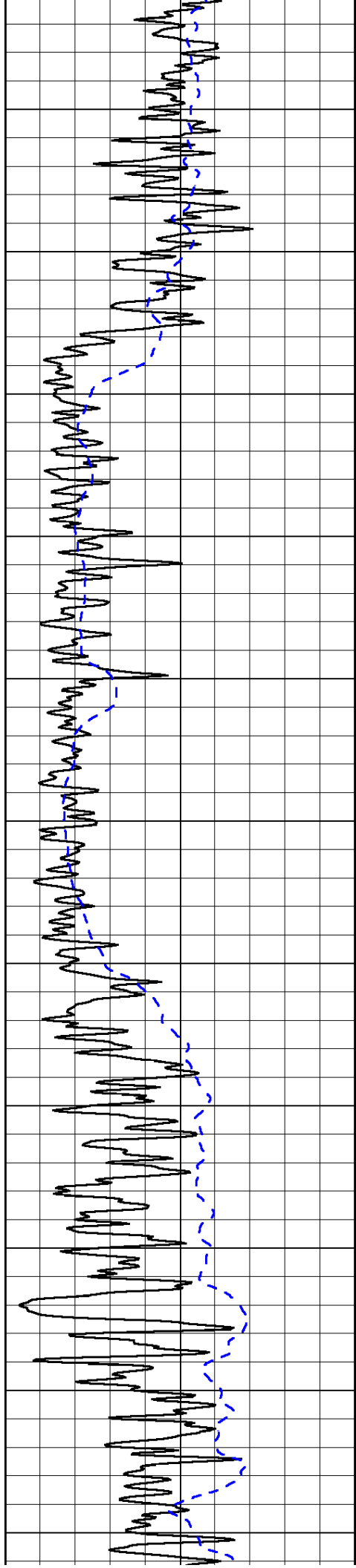
0	Shallow Resistivity	50
0	Deep Resistivity	50

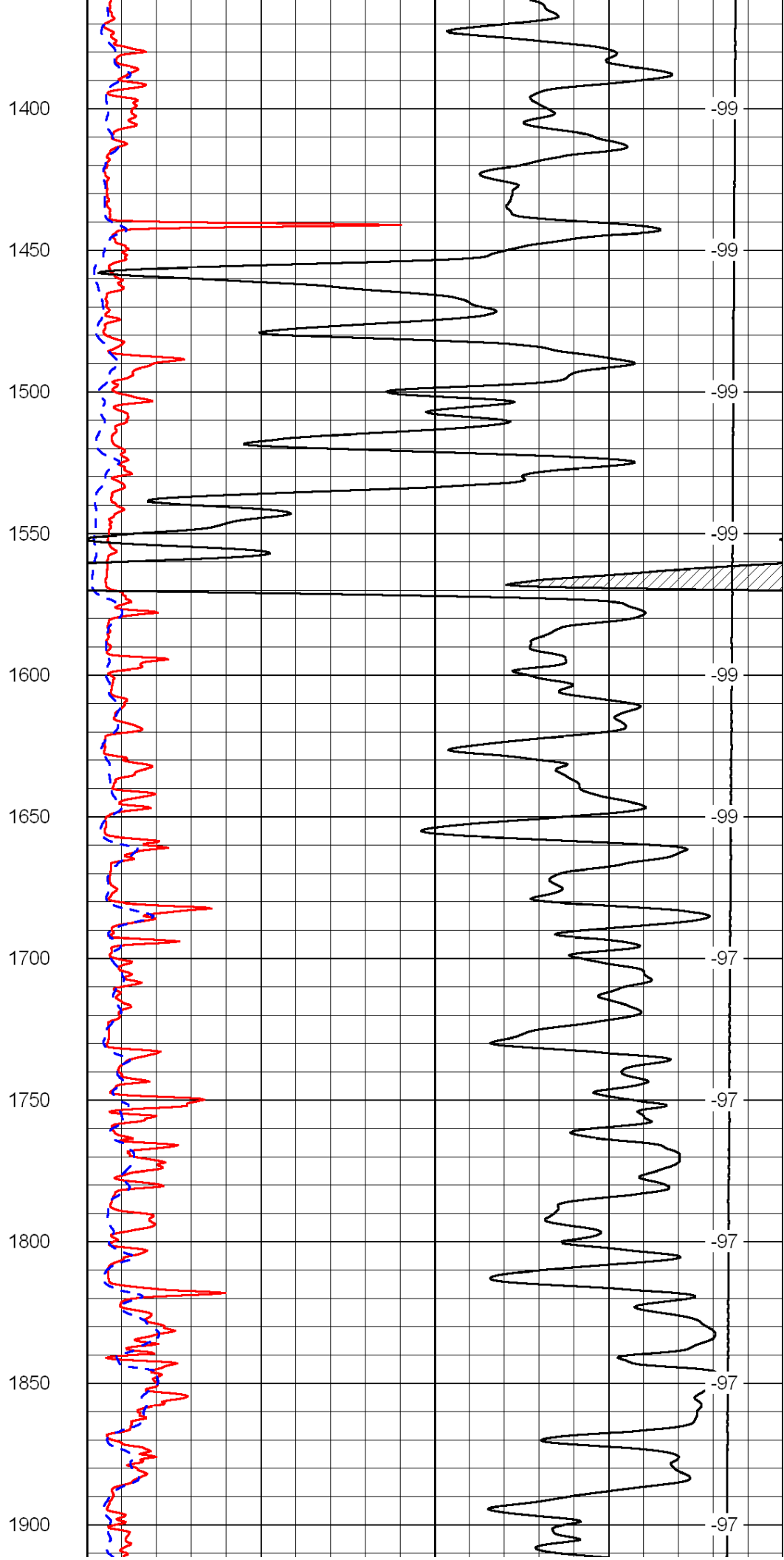
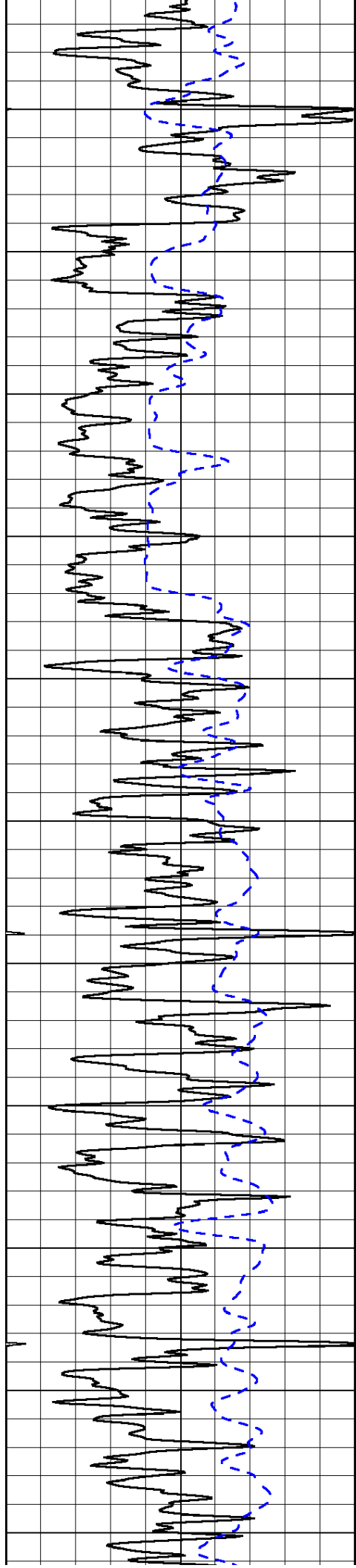
LSPD

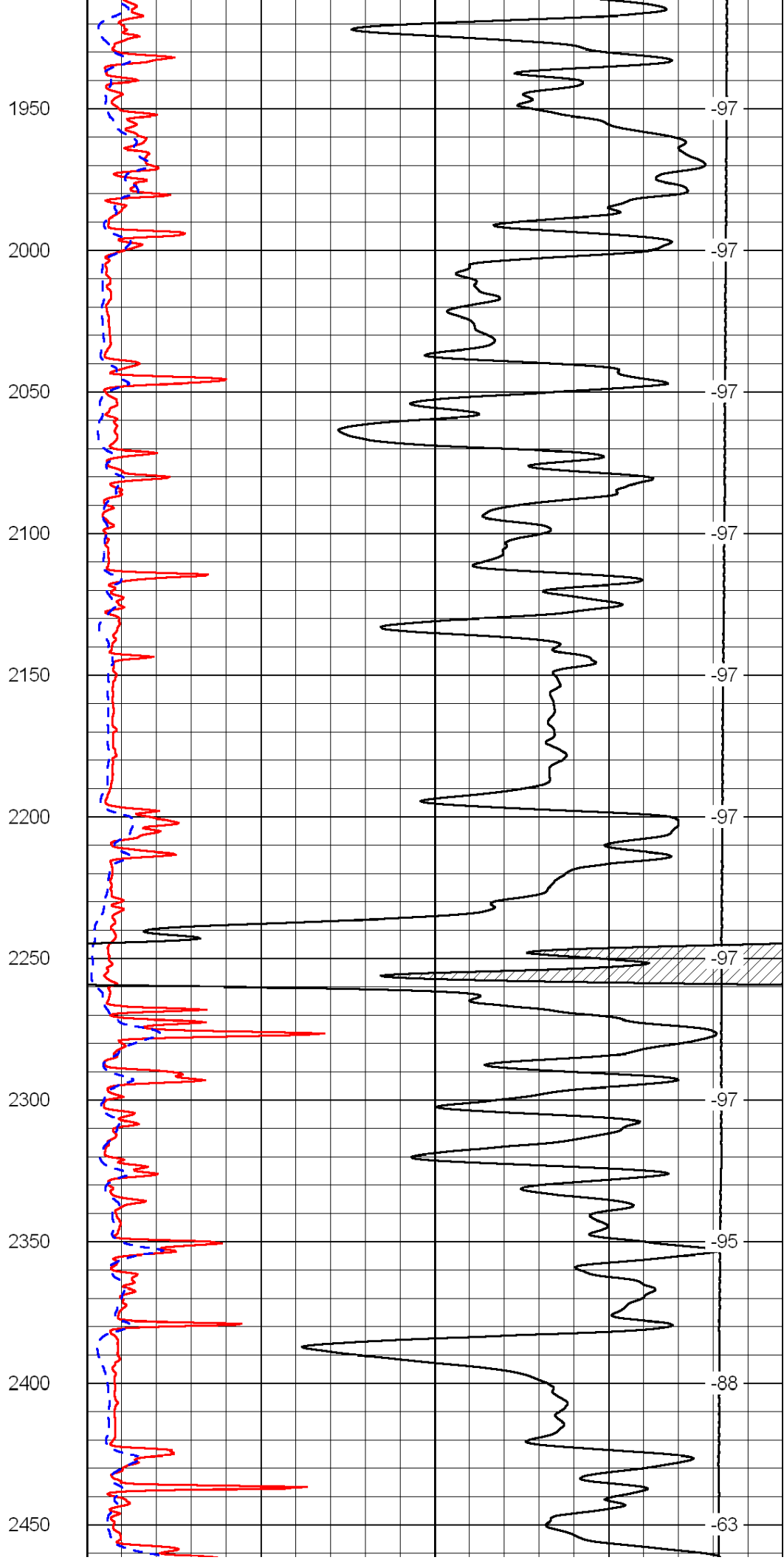
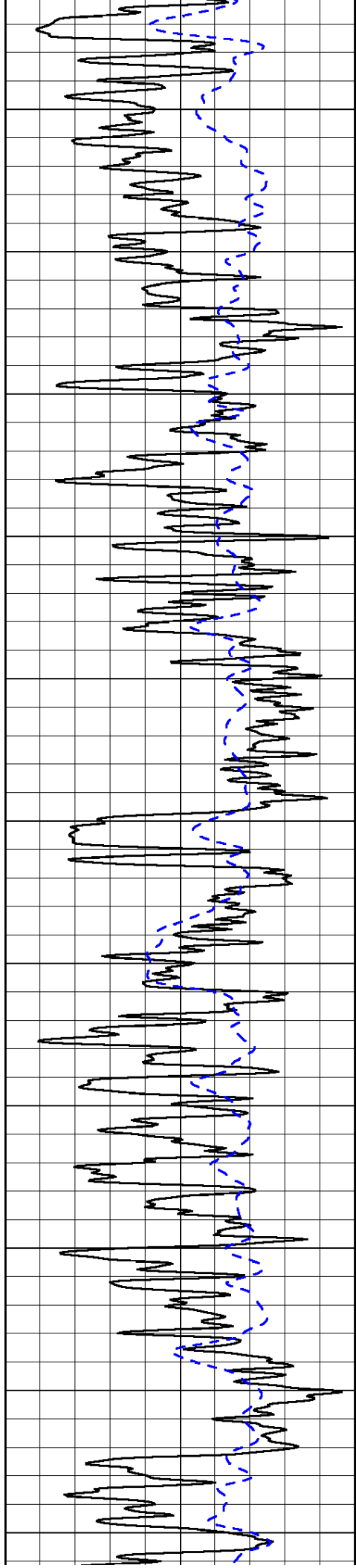
1000	Conductivity	0
15000	Line Tension	0

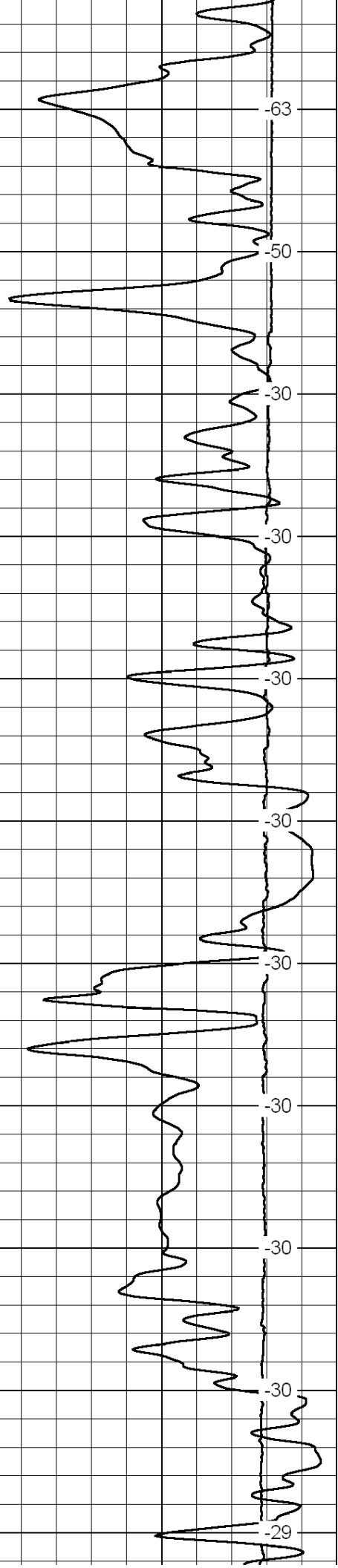
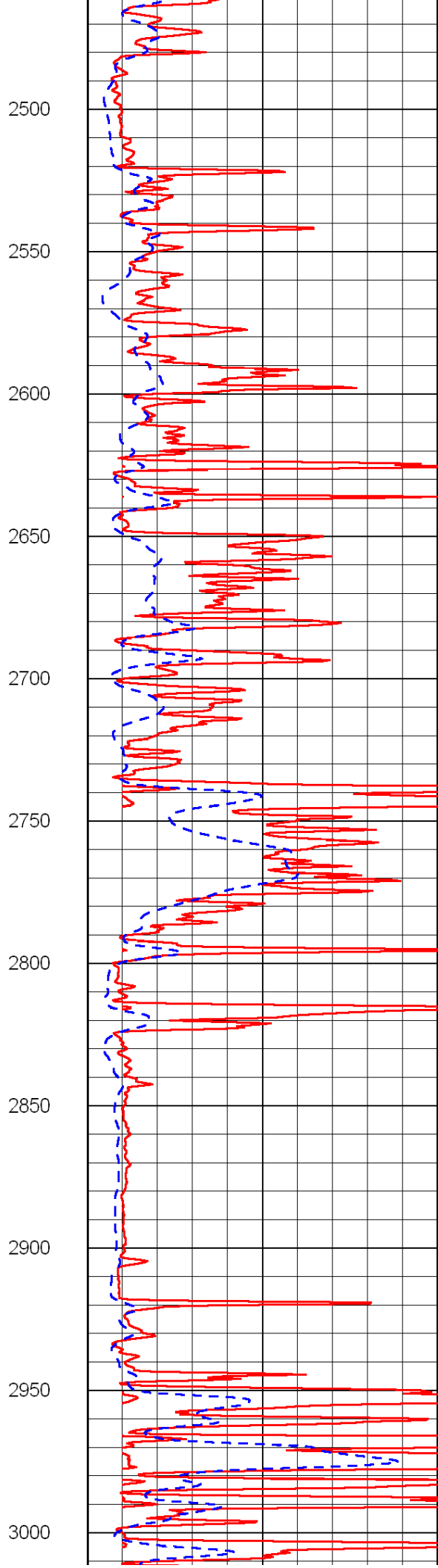
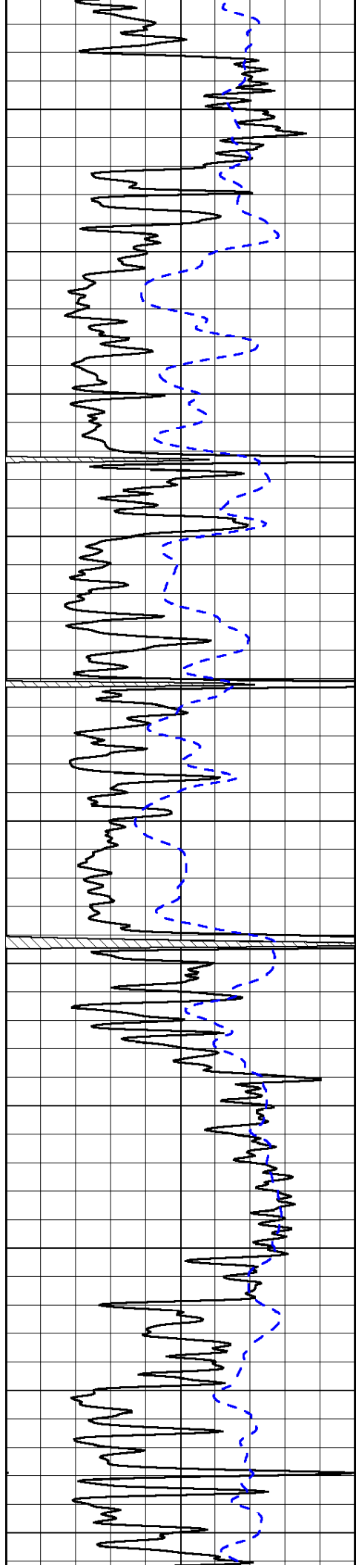
50	Shallow Resistivity	500
50	Deep Resistivity	500

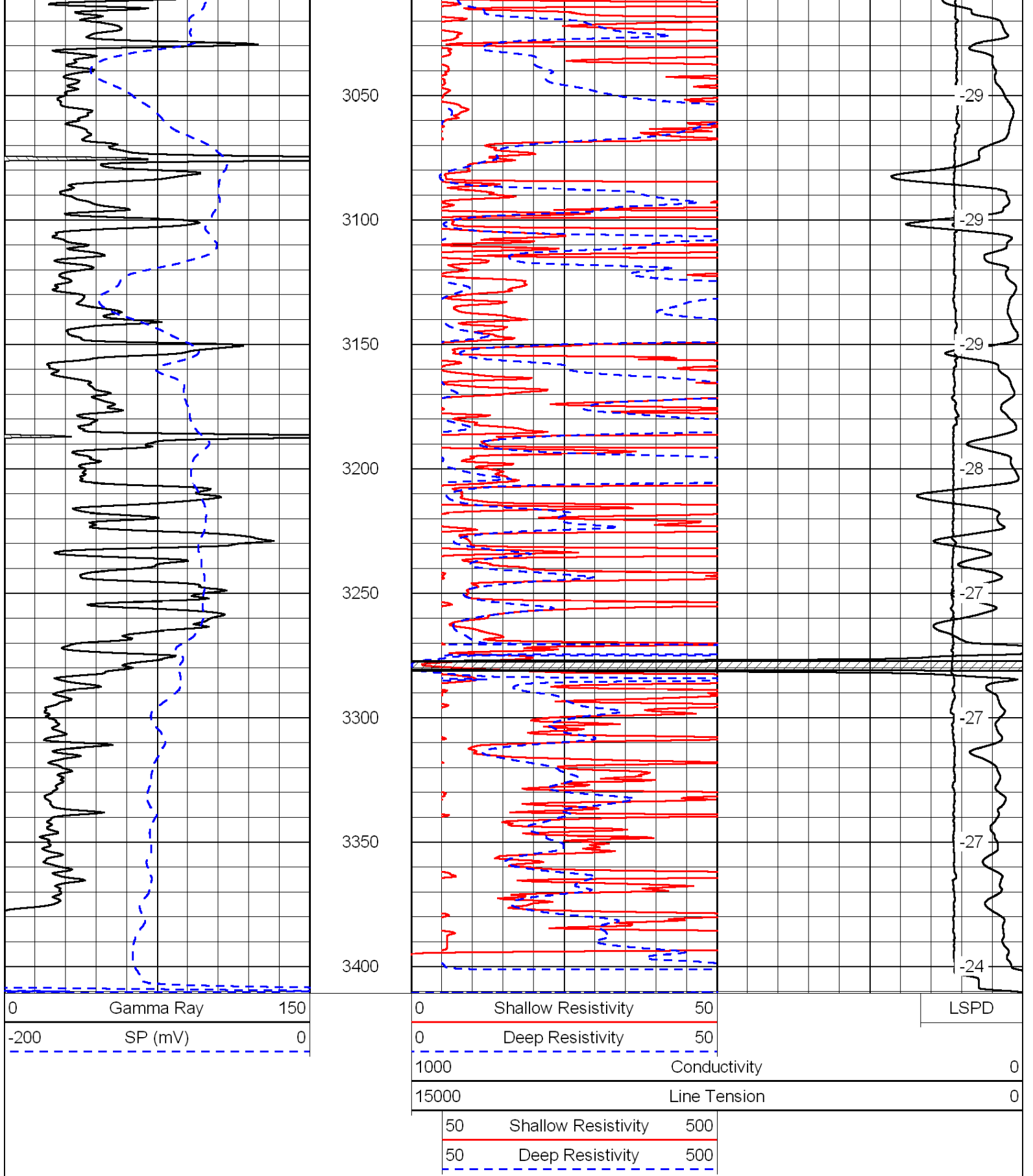












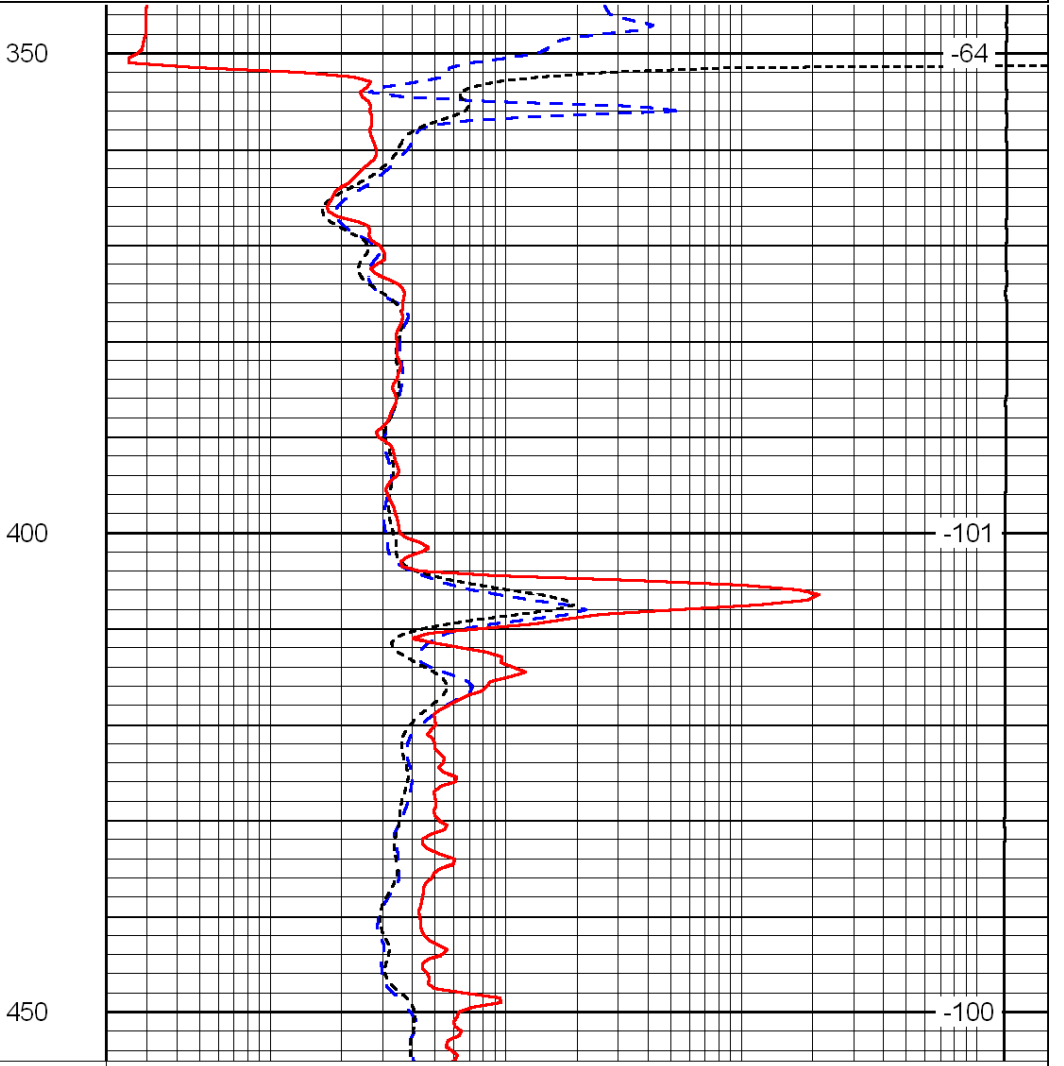
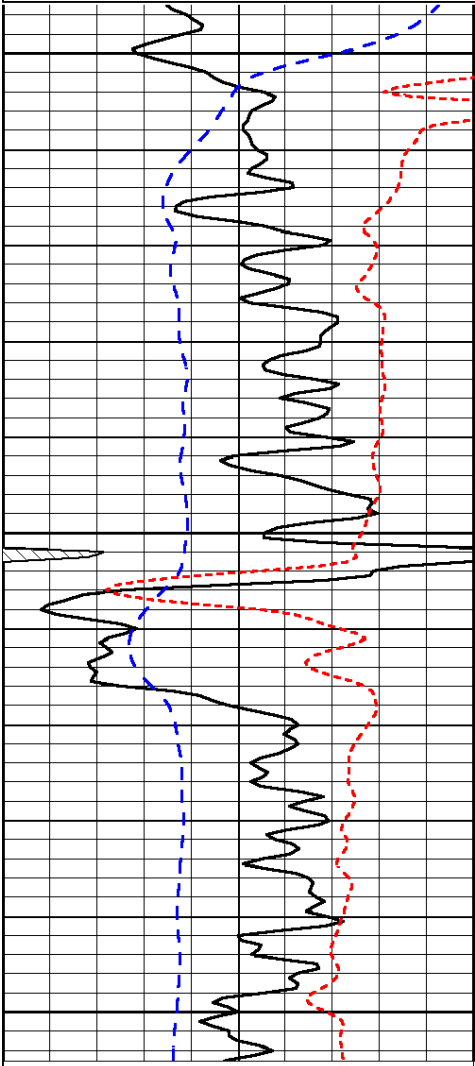
Database File: c:\warrior\data\amwar_kathy no. 2-24\aw121911hd.db
 Dataset Pathname: dil/awstack
 Presentation Format: dil
 Dataset Creation: Mon Dec 19 08:17:24 2011
 Charted by: Depth in Feet scaled 1:240



-200	SP (mV)	0
-160	Rxo / Rt	40

0.2	Medium Resistivity	2000
0.2	Shallow Resistivity	2000
15000	Line Tension	0

LSPD



0	Gamma Ray	150
-200	SP (mV)	0
-160	Rxo / Rt	40

0.2	Deep Resistivity	2000
0.2	Medium Resistivity	2000
0.2	Shallow Resistivity	2000
15000	Line Tension	0

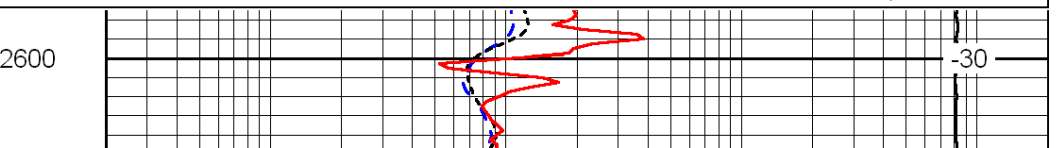
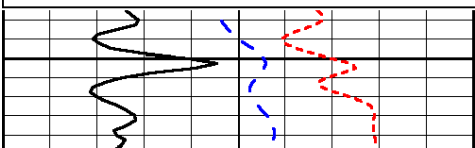
LSPD

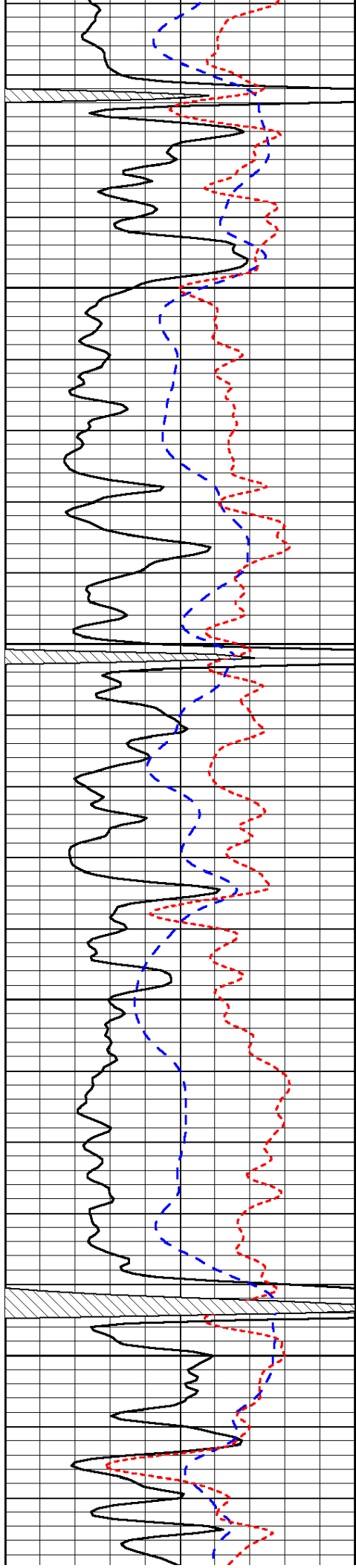
Database File: c:\warrior\data\amwar_kathy no. 2-24\aw121911hd.db
 Dataset Pathname: dil/awstack
 Presentation Format: dil
 Dataset Creation: Mon Dec 19 08:17:24 2011
 Charted by: Depth in Feet scaled 1:240

0	Gamma Ray	150
-200	SP (mV)	0
-160	Rxo / Rt	40

0.2	Deep Resistivity	2000
0.2	Medium Resistivity	2000
0.2	Shallow Resistivity	2000
15000	Line Tension	0

LSPD



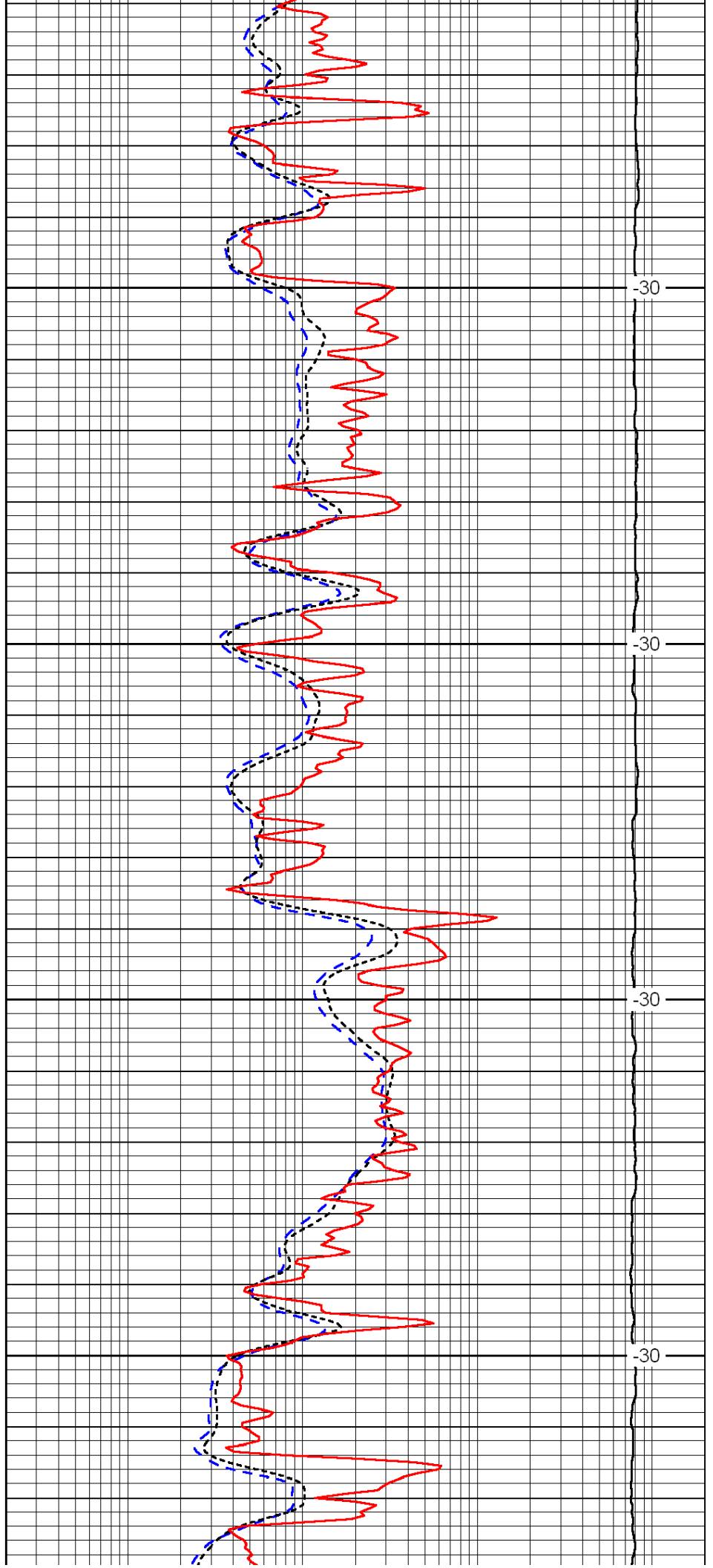


2650

2700

2750

2800

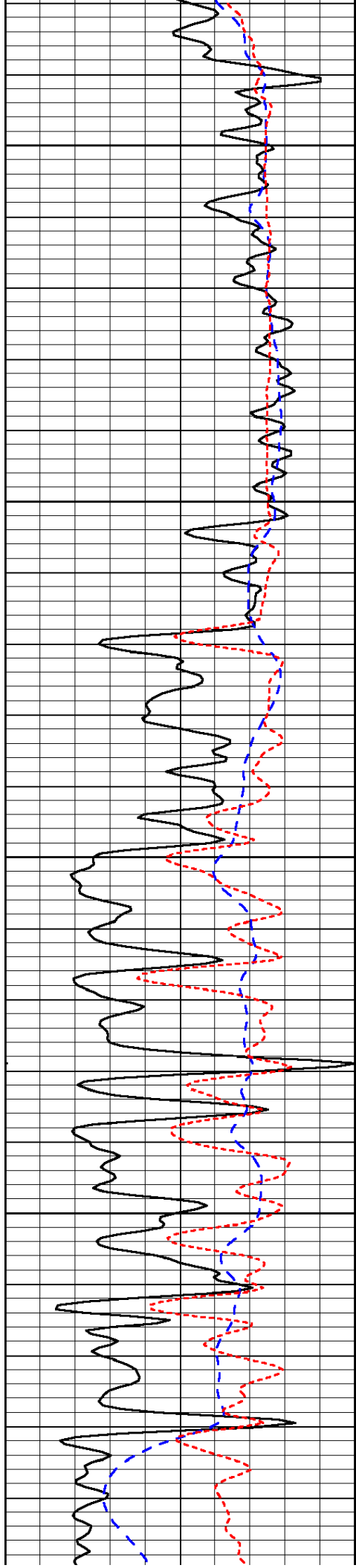


-30

-30

-30

-30



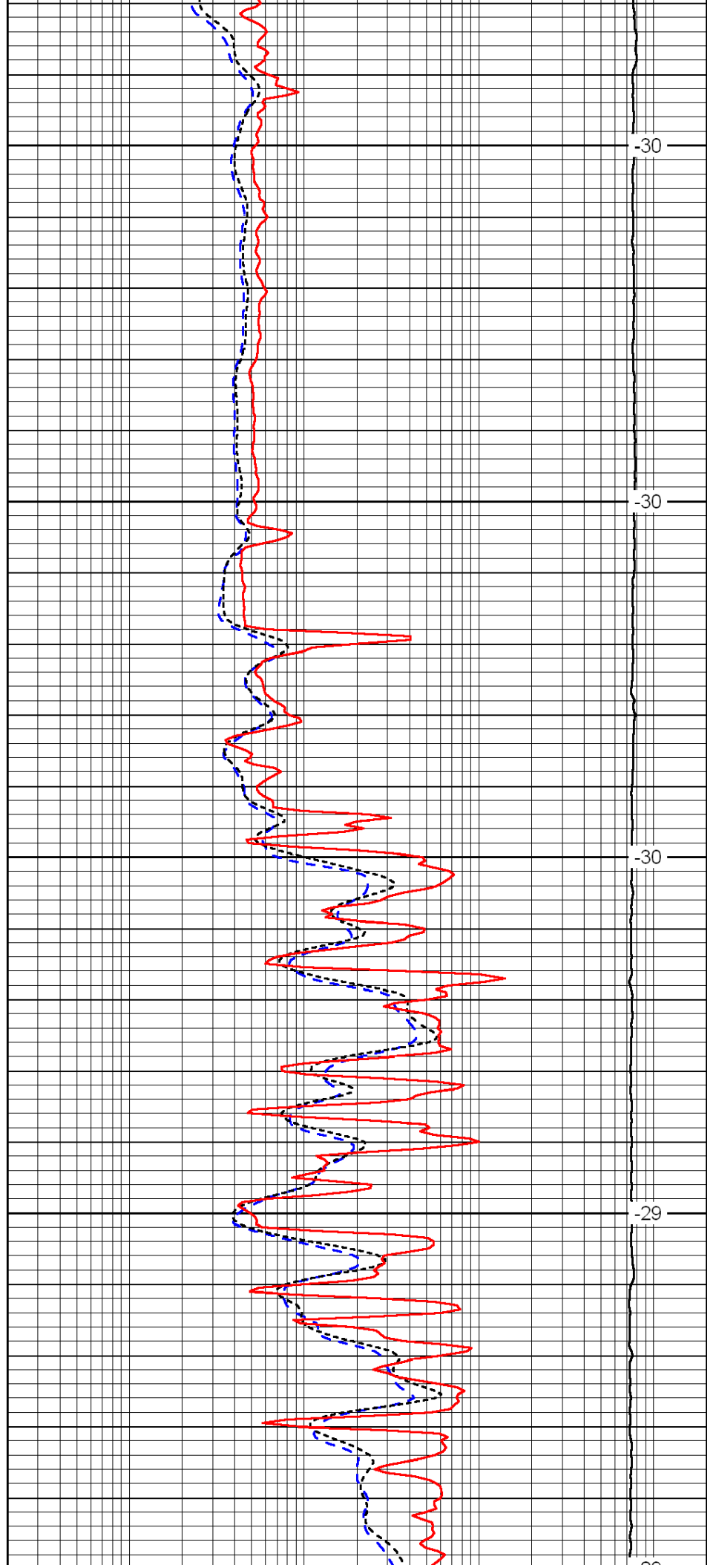
2850

2900

2950

3000

3050



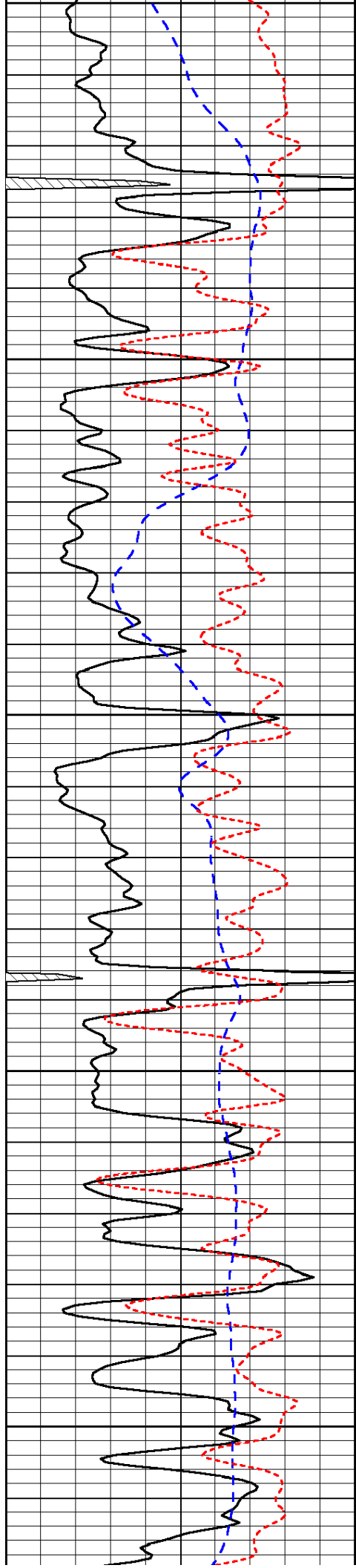
-30

-30

-30

-29

-28



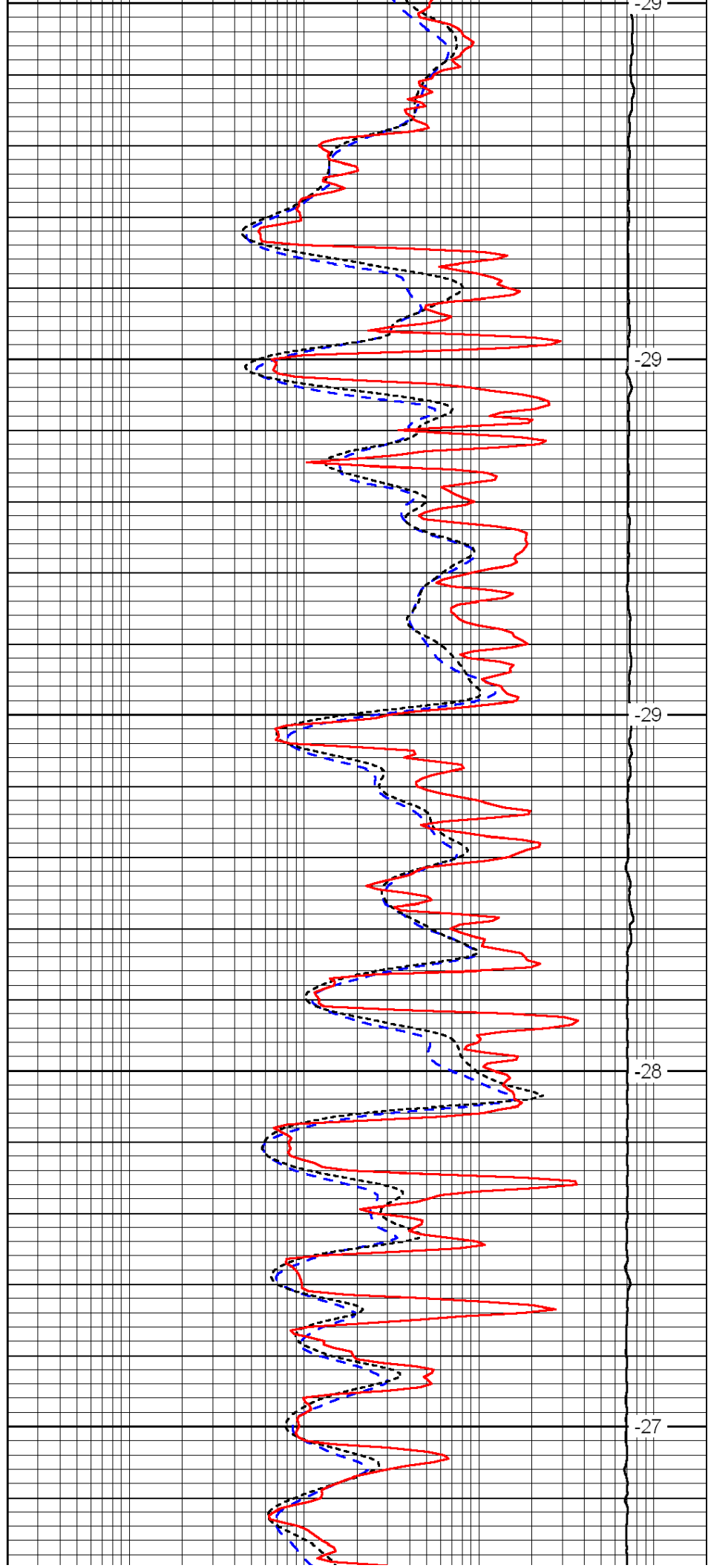
3050

3100

3150

3200

3250



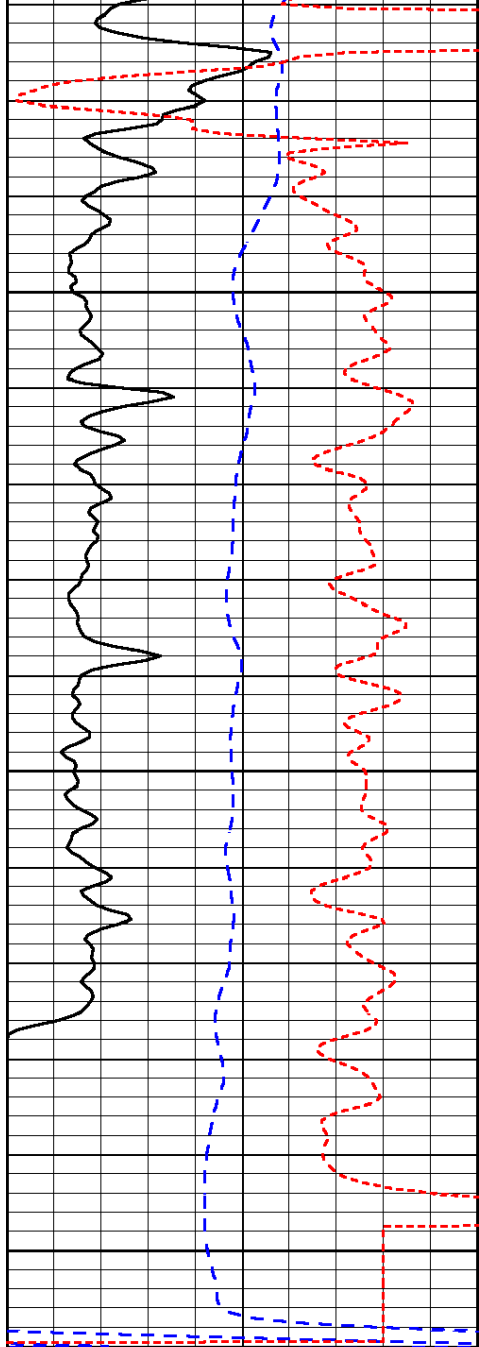
-29

-29

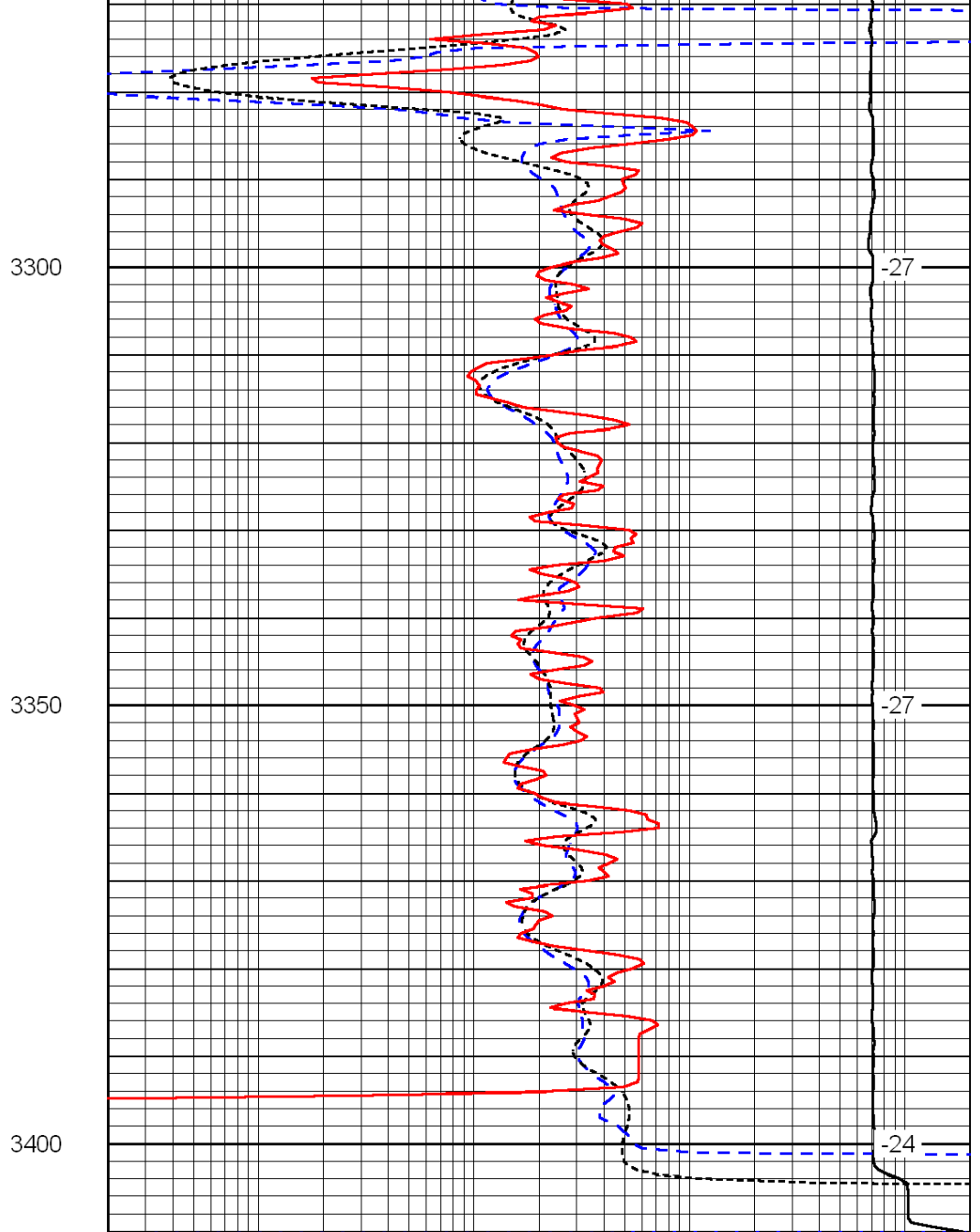
-29

-28

-27



0	Gamma Ray	150
-200	SP (mV)	0
-160	Rxo / Rt	40



0.2	Deep Resistivity	2000
0.2	Medium Resistivity	2000
0.2	Shallow Resistivity	2000
15000	Line Tension	0

LSPD