



DIGITAL LOG (785) 625-3858

Microresistivity Log

15-159-22,672-00-00

API No.

Company American Warrior, Inc.
 Well Kathy No. 2-24
 Field Chase-Silica
 County Rice State Kansas

Location SW SW NE NE
 1275' FNL & 1100' FEL

Sec: 24 Twp: 19 S Rge: 10 W

Permanent Datum Ground Level Elevation 1739
 Log Measured From Kelly Bushing 8 Ft. Above Perm. Datum
 Drilling Measured From Kelly Bushing

Other Services
 CNL/CDL
 DIL

Elevation
 K.B. 1747
 D.F. 1739
 G.L. 1739

Date	12/19/2011
Run Number	Two
Depth Driller	3400
Depth Logger	3402
Bottom Logged Interval	3401
Top Log Interval	2600
Casing Driller	8.625 @ 357
Casing Logger	352
Bit Size	7.875
Type Fluid in Hole	Chemical
Salinity, ppm CL	7.100
Density / Viscosity	9.5 53
pH / Fluid Loss	10.5 9.6
Source of Sample	Flowline
Rm @ Meas. Temp	.55 @ 60
Rmf @ Meas. Temp	.41 @ 60
Rmc @ Meas. Temp	.74 @ 60
Source of Rmf / Rmc	Charts
Rm @ BHT	.29 @ 112
Operating Rig Time	4 Hours
Max Rec. Temp. F	112
Equipment Number	91
Location	Hays
Recorded By	K. Bange
Witnessed By	Josh Austin

<<< Fold Here >>>

All interpretations are opinions based on inferences from electrical or other measurements and we cannot and do not guarantee the accuracy or correctness of any interpretation, and we shall not, except in the case of gross or willful negligence on our part, be liable or responsible for any loss, costs, damages, or expenses incurred or sustained by anyone resulting from any interpretation made by any of our officers, agents or employees. These interpretations are also subject to our general terms and conditions set out in our current Price Schedule.

Comments

Thank you for using Log-Tech, Inc.
 (785) 625-3858

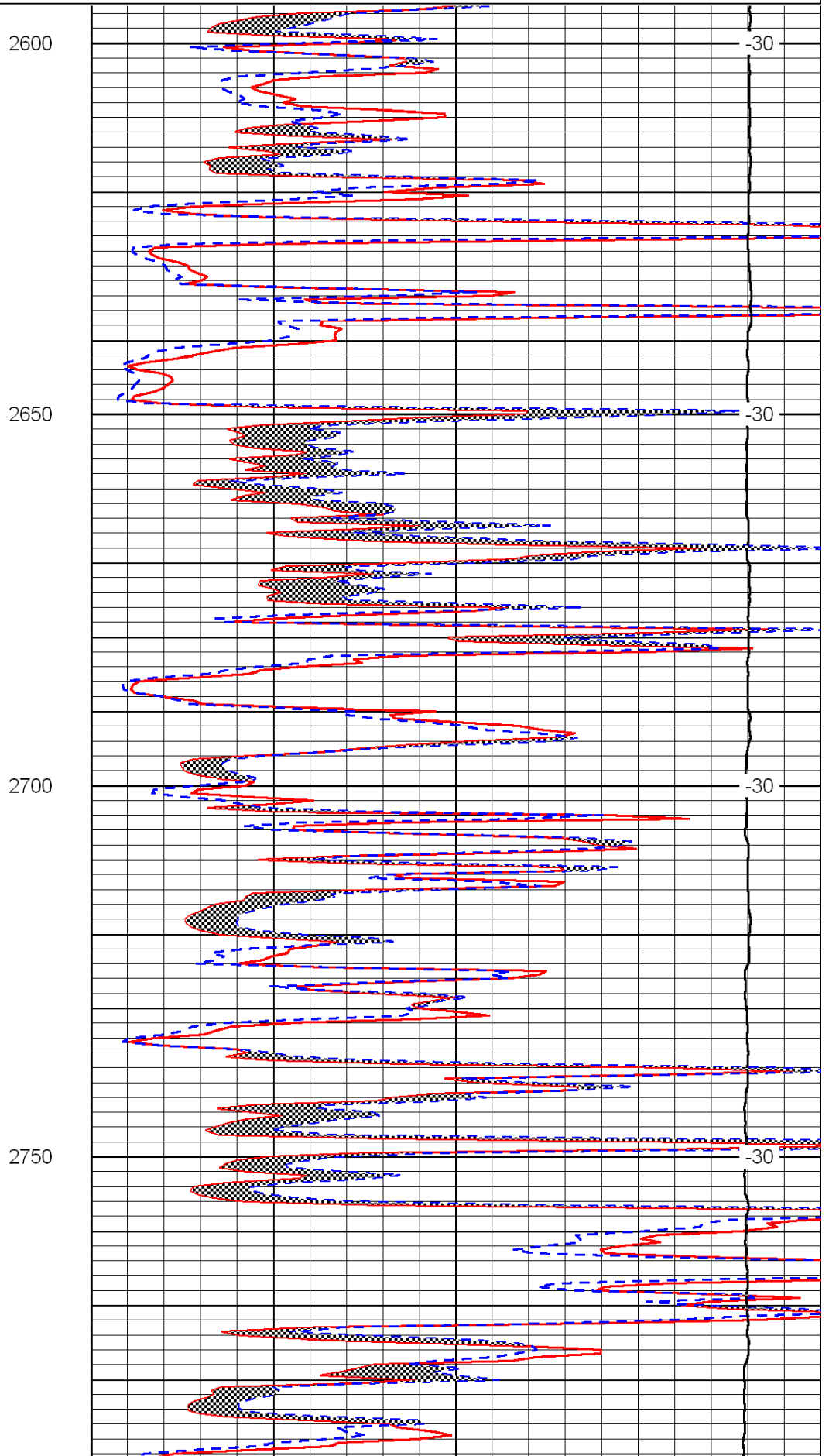
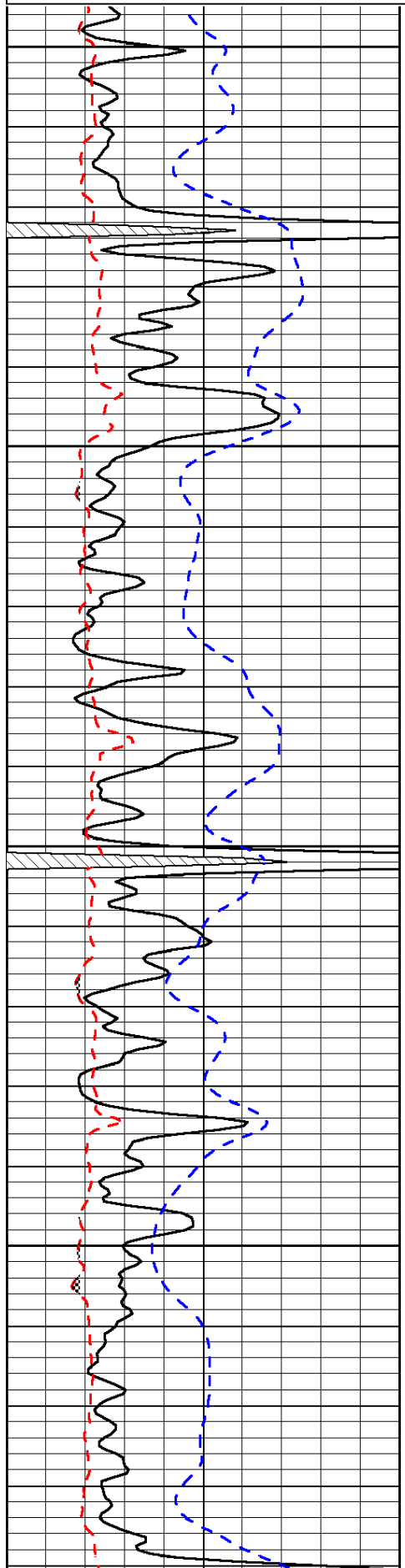
Chase, KS, 1 W, 2 1/2 N, W into

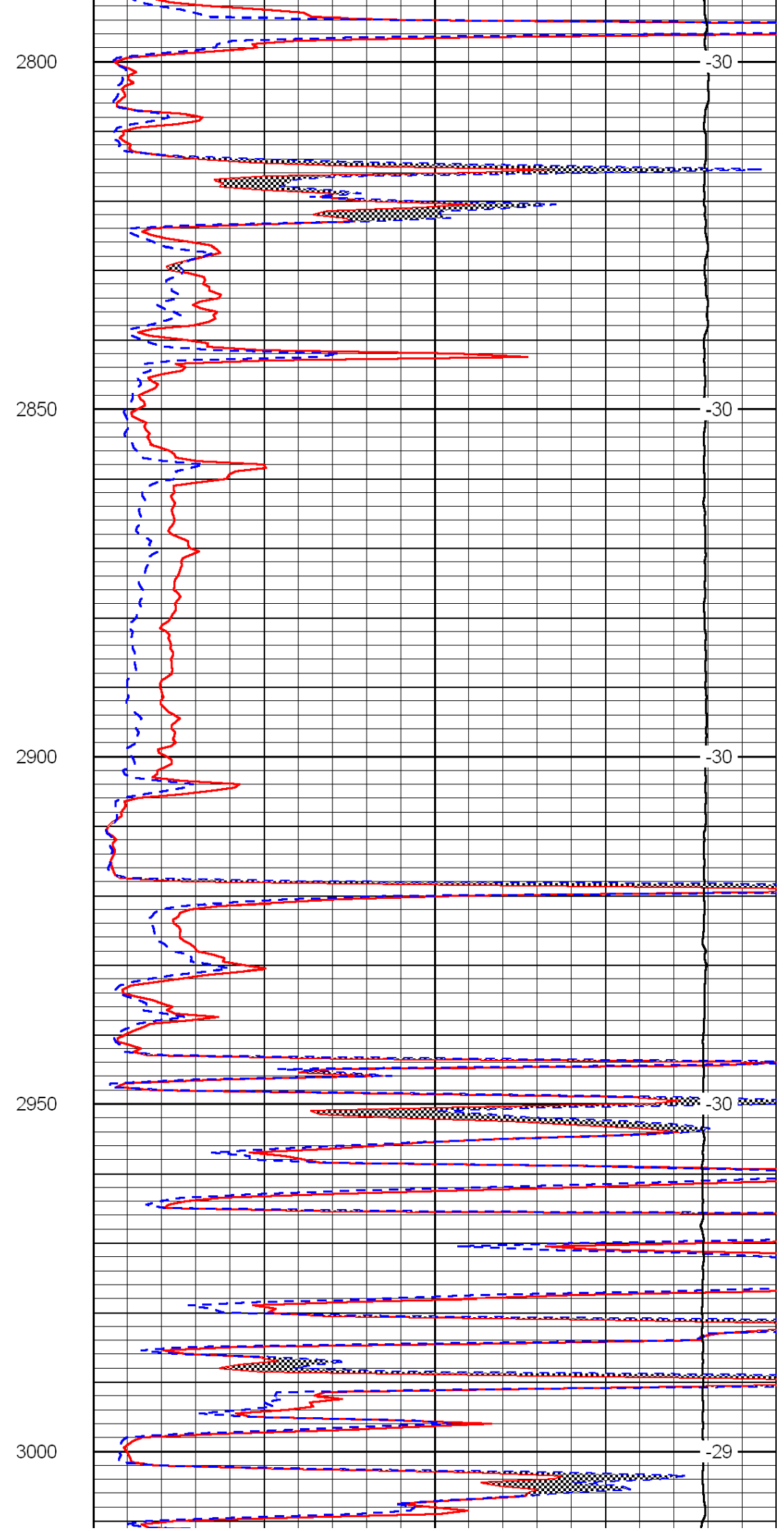
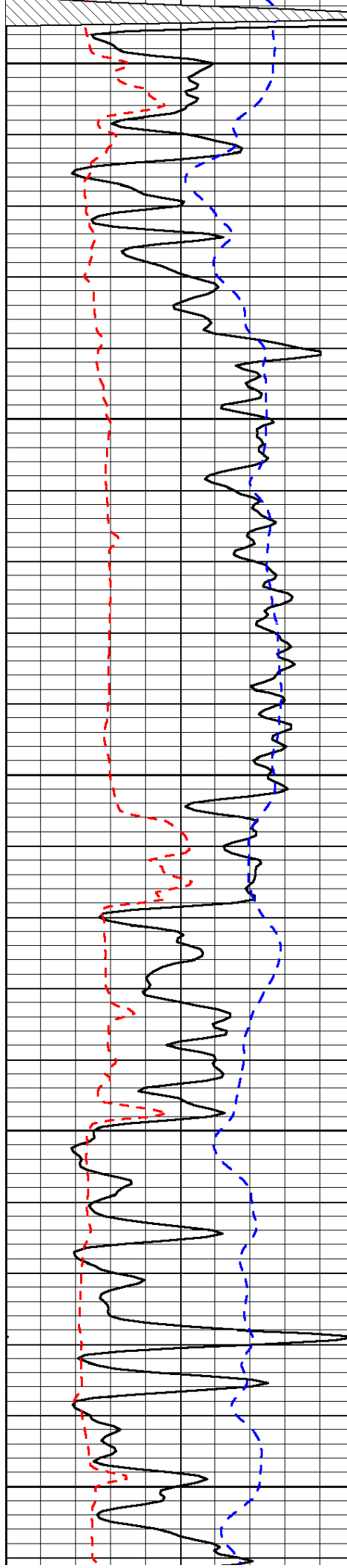
Database File: c:\warrior\data\amwar_kathy no. 2-24\aw121911hd.db
 Dataset Pathname: dil/awstack
 Presentation Format: micro
 Dataset Creation: Mon Dec 19 08:17:24 2011
 Charted by: Depth in Feet scaled 1:240

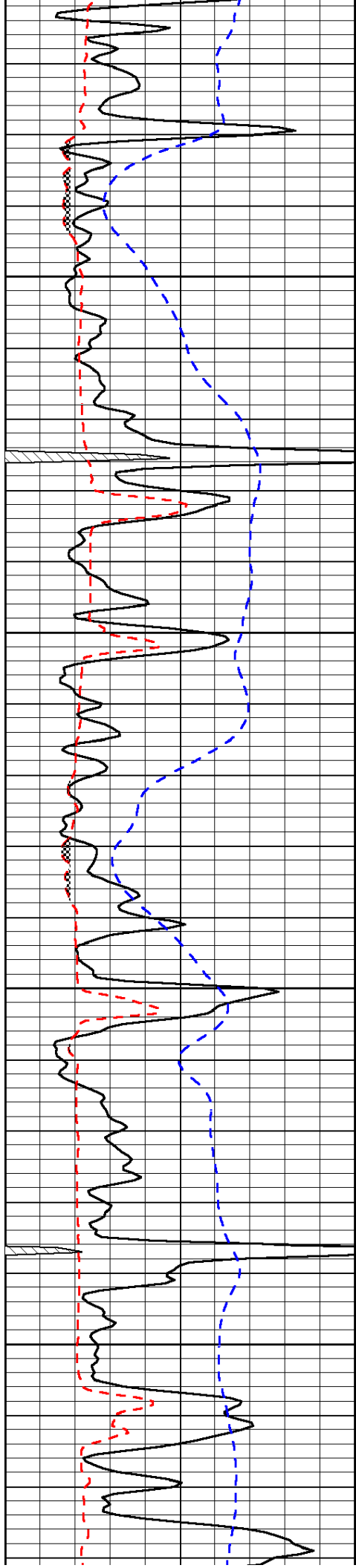
0	Gamma Ray	150
6	Micro Log Caliper (GAPI)	16
-200	SP (mV)	0

0	Micro Inverse 1 X 1	40
0	Micro Normal 2"	40
15000	Line Weight	0

LSPD





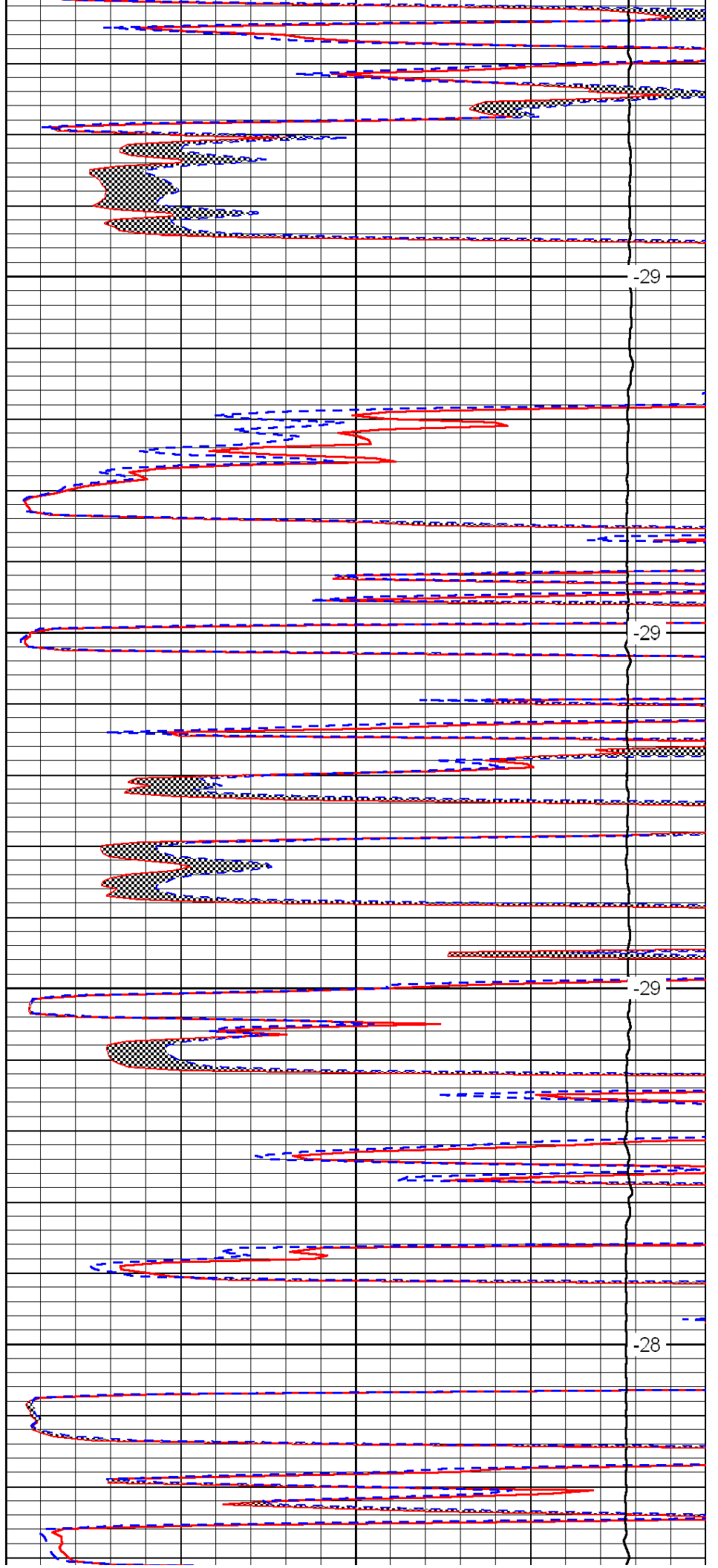


3050

3100

3150

3200

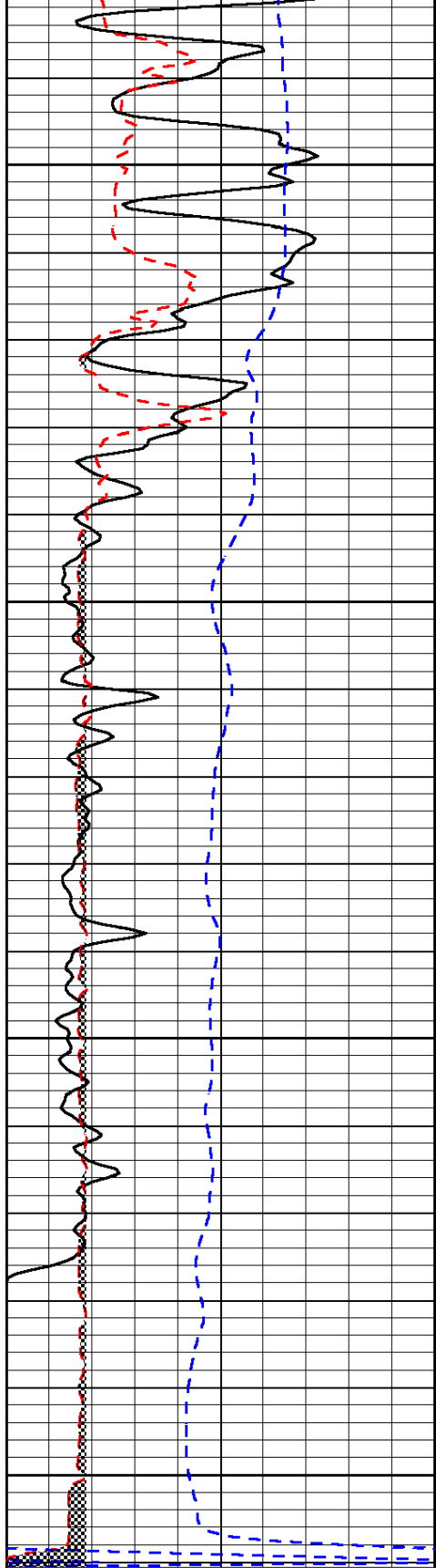


-29

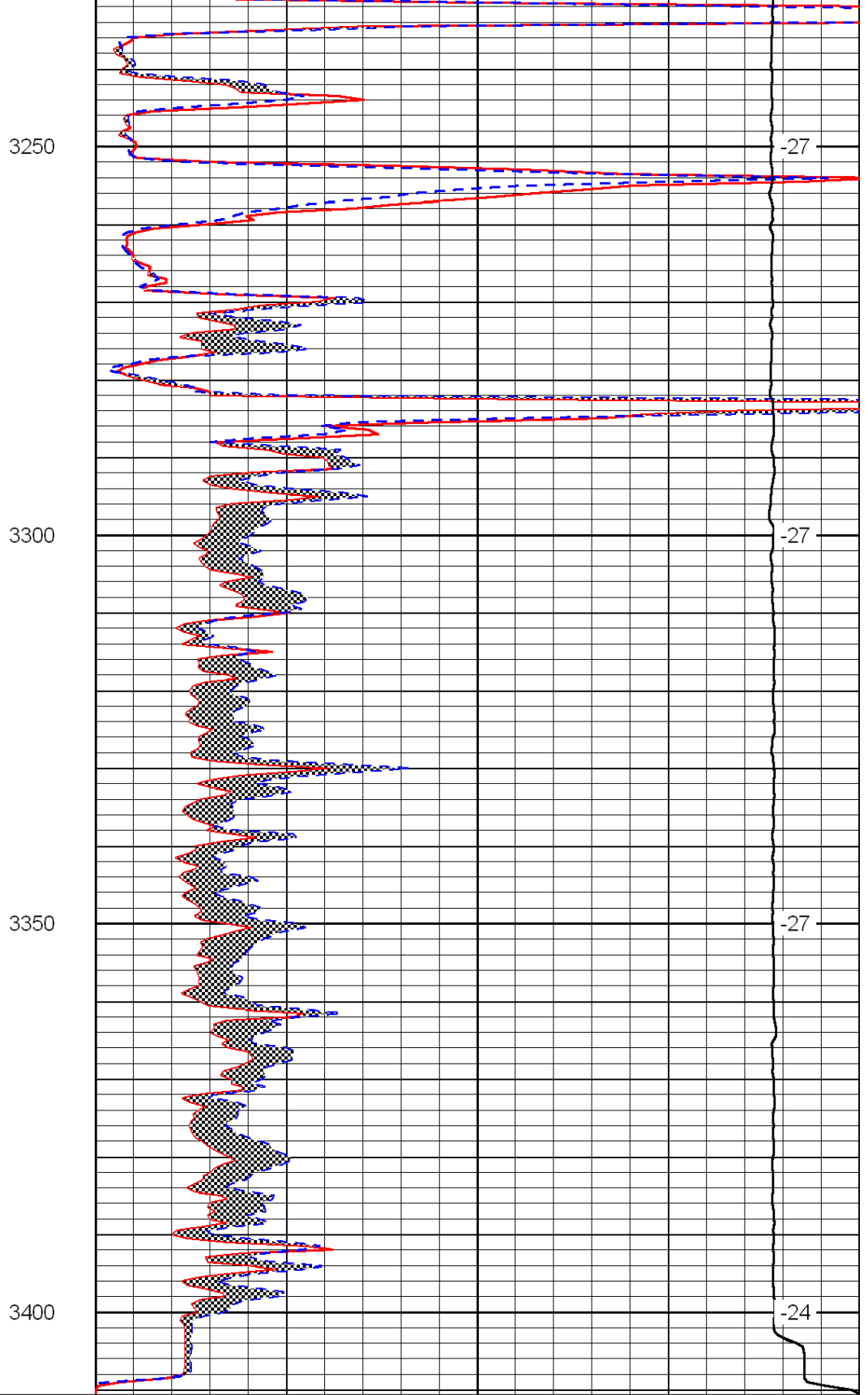
-29

-29

-28



0	Gamma Ray	150
6	Micro Log Caliper (GAPI)	16
-200	SP (mV)	0



0	Micro Inverse 1 X 1	40
0	Micro Normal 2''	40
15000	Line Weight	0

LSPD