



Microresistivity Log

DIGITAL LOG (785) 625-3858

API No.	15-065-23,768-00-00		
Company	Culbreath Oil & Gas Co., Inc.		
Well	Ronald No. 1-8		
Field	Wildcat		
County	Graham	State	Kansas
Location	SW NW SW 1650' FSL & 330' FWL		
Sec: 8	Twp: 9 S	Rge: 24 W	
Permanent Datum	Ground Level	Elevation 2444	
Log Measured From	Kelly Bushing	8 Ft. Above Perm. Datum	
Drilling Measured From	Kelly Bushing		
		Other Services CNL/CDL DIL/BHCS	
		Elevation K.B. 2452 D.F. 2444 G.L. 2444	

Date	9/03/2011	
Run Number	Two	
Depth Driller	4094	
Depth Logger	4093	
Bottom Logged Interval	4092	
Top Log Interval	3200	
Casing Driller	8.625 @ 344	
Casing Logger	346	
Bit Size	7.875	
Type Fluid in Hole	Chemical	
Salinity, ppm CL	800	
Density / Viscosity	9.3	60
pH / Fluid Loss	10.5	7.2
Source of Sample	Flowline	
Rm @ Meas. Temp	1.2 @ 73	
Rmf @ Meas. Temp	.90 @ 73	
Rmc @ Meas. Temp	1.62 @ 73	
Source of Rmf / Rmc	Charts	
Rm @ BHT	.74 @ 119	
Operating Rig Time	5 Hours	
Max Rec. Temp. F	119	
Equipment Number	91	
Location	Hays	
Recorded By	K. Bange	
Witnessed By	Pat Deenihan	

<<< Fold Here >>>

All interpretations are opinions based on inferences from electrical or other measurements and we cannot and do not guarantee the accuracy or correctness of any interpretation, and we shall not, except in the case of gross or willful negligence on our part, be liable or responsible for any loss, costs, damages, or expenses incurred or sustained by anyone resulting from any interpretation made by any of our officers, agents or employees. These interpretations are also subject to our general terms and conditions set out in our current Price Schedule.

Comments

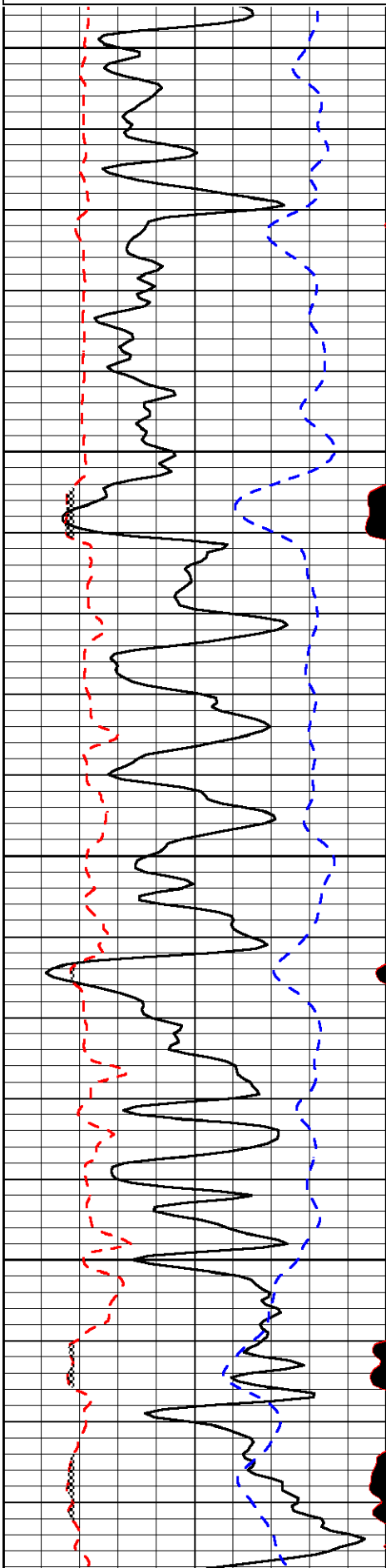
Thank you for using Log-Tech, Inc.
 (785) 625-3858

 Wakeeney, N to Red Line, 8 W to 180th,
 3 N to K rd, 1/2 W, N into

Database File: culbreath090311hd.db
 Dataset Pathname: dil/@00000e60
 Presentation Format: micro
 Dataset Creation: Sat Sep 03 08:13:40 2011
 Charted by: Depth in Feet scaled 1:240

0	Gamma Ray	150
6	MCAL (GAPI)	16
2.875	Mud Cake (GAPI)	7.875
-200	SP	0

0	Micro Inverse 1 X 1	40
0	Micro Normal 2"	40
10000	Line Weight	0
		LSPD

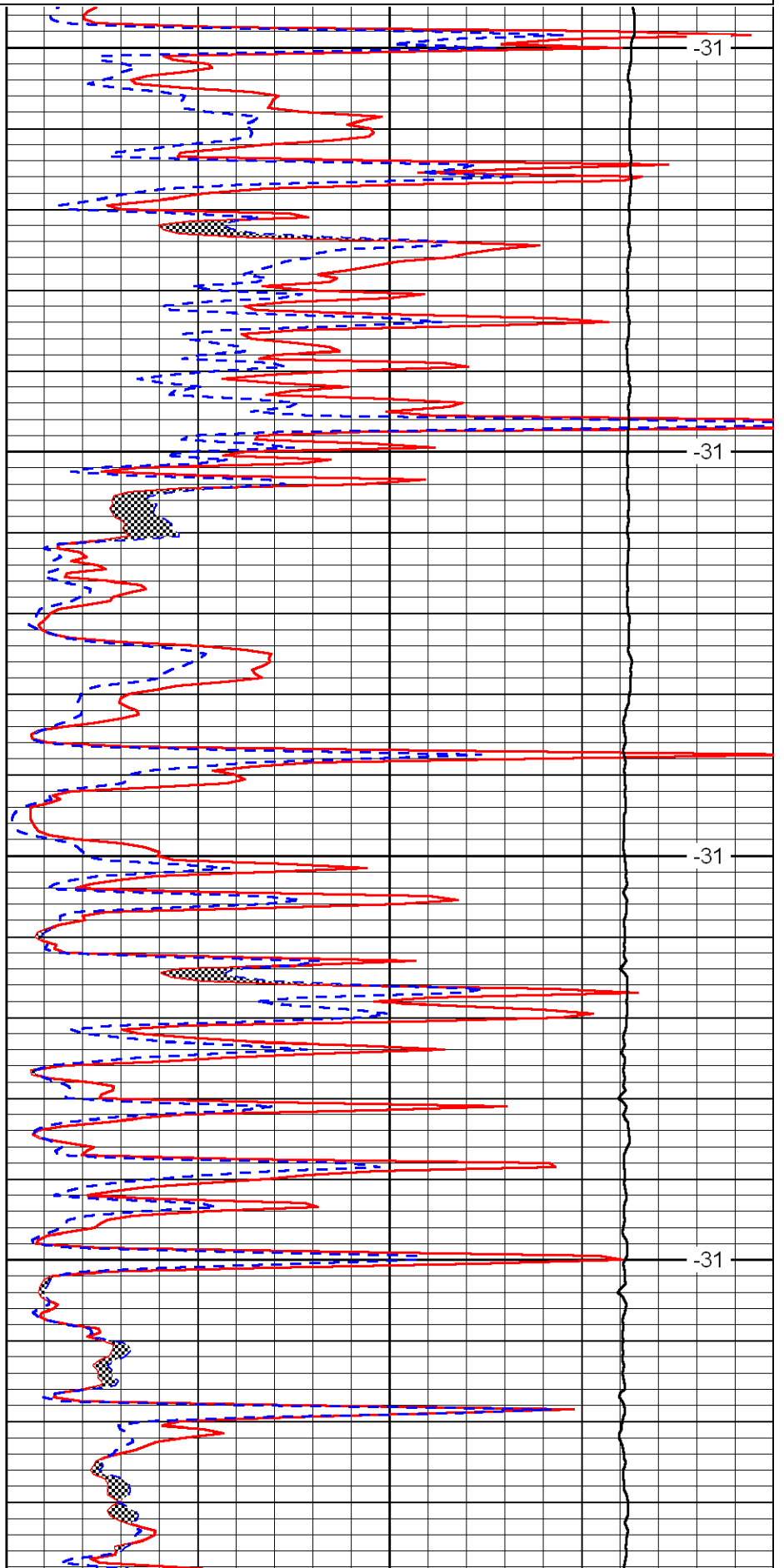


3200

3250

3300

3350

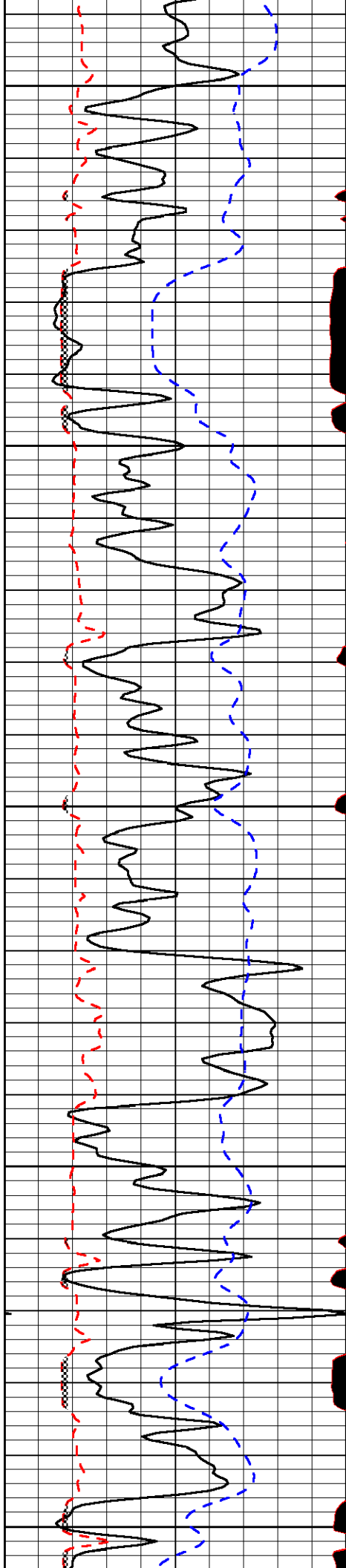


-31

-31

-31

-31



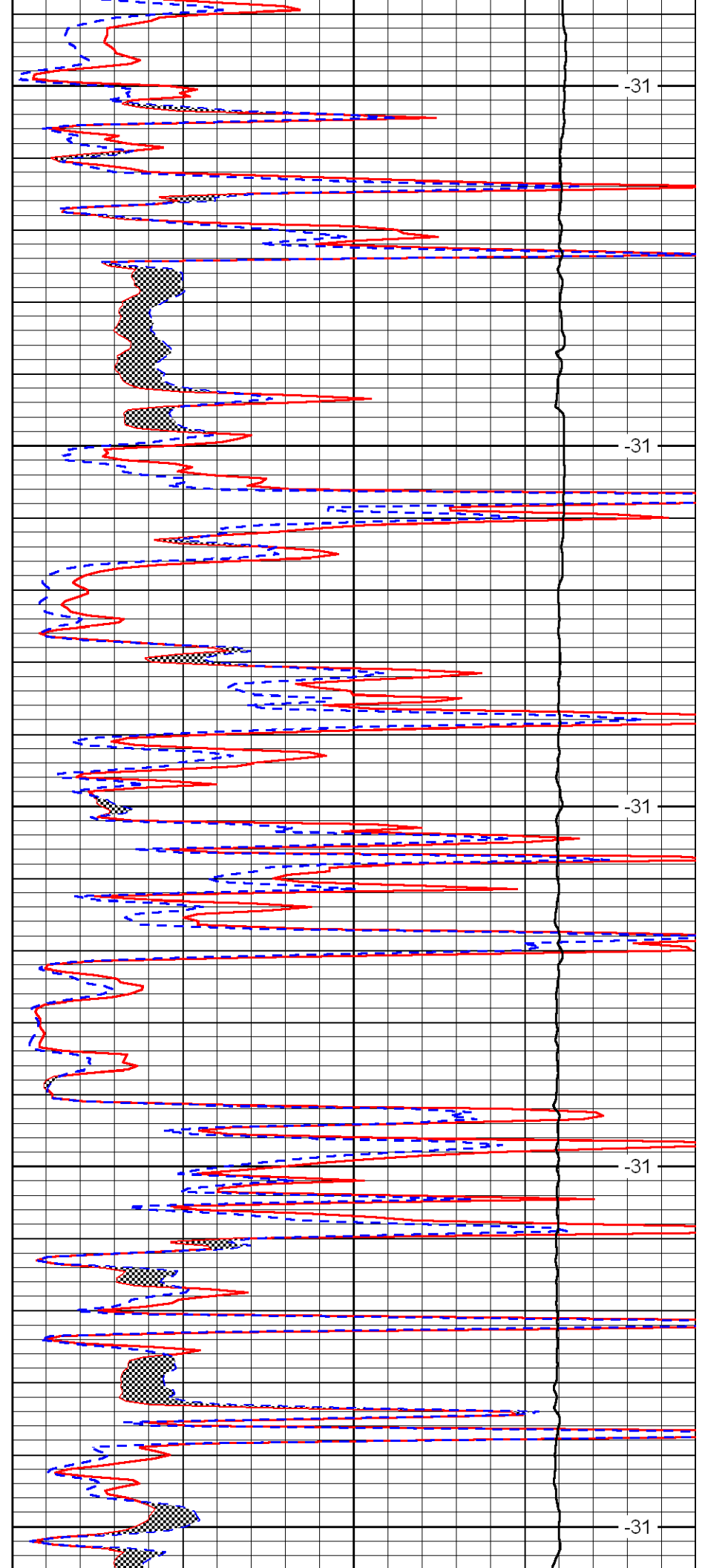
3400

3450

3500

3550

3600



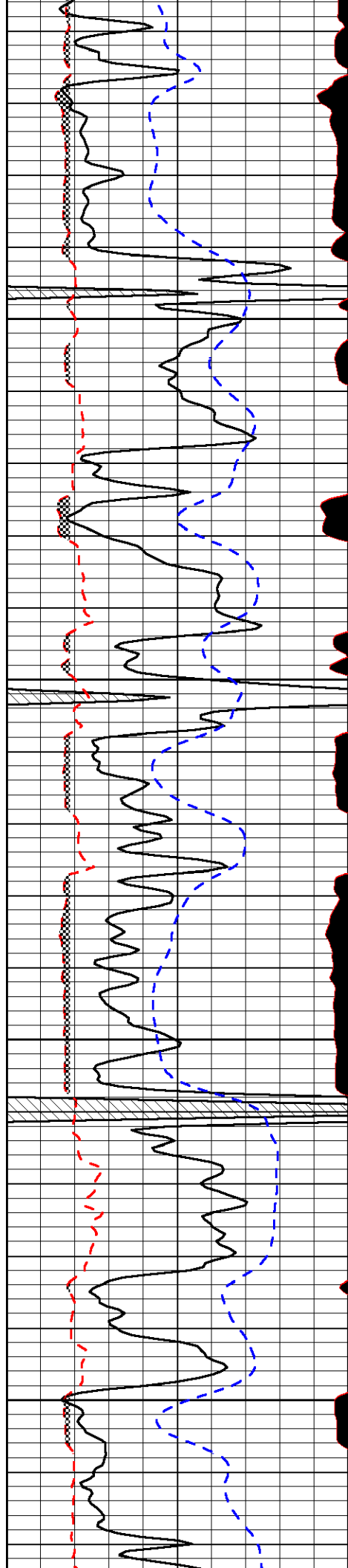
-31

-31

-31

-31

-31

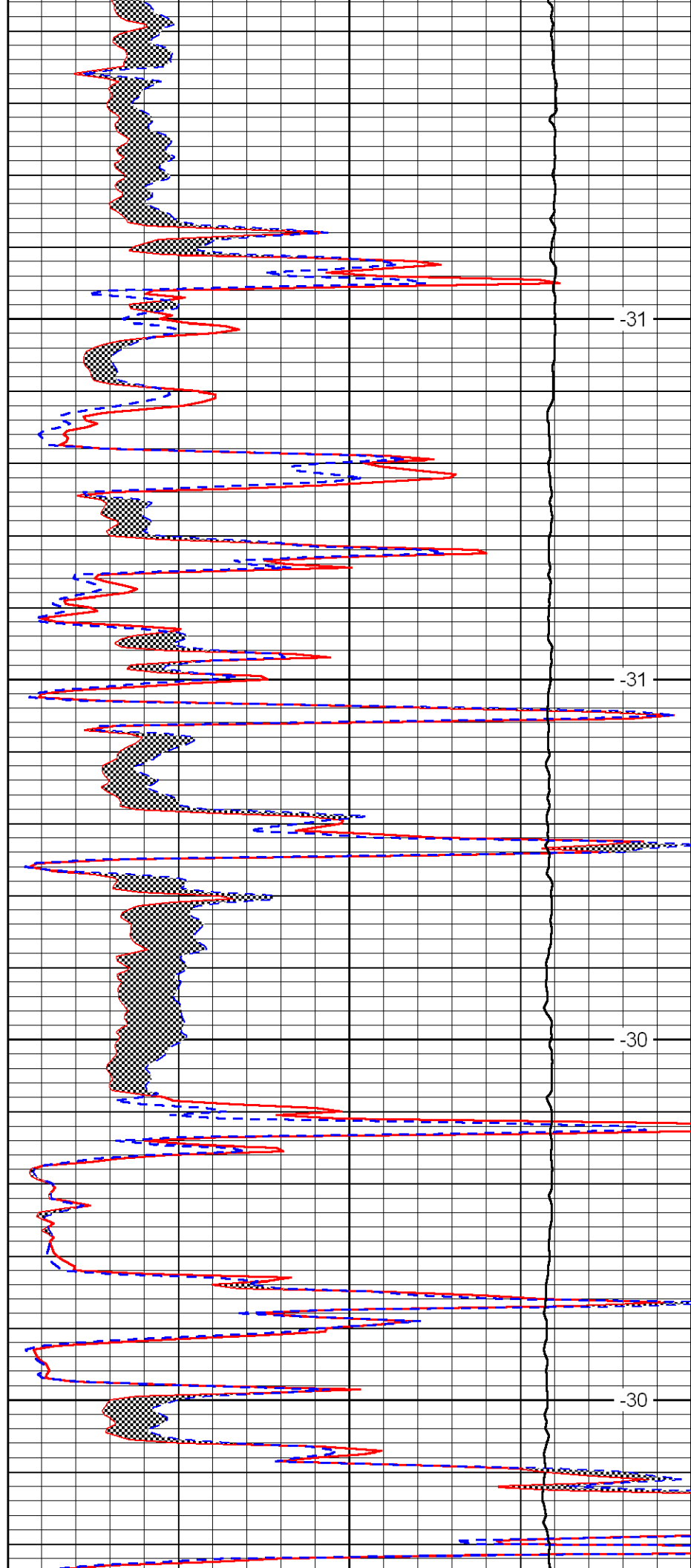


3650

3700

3750

3800

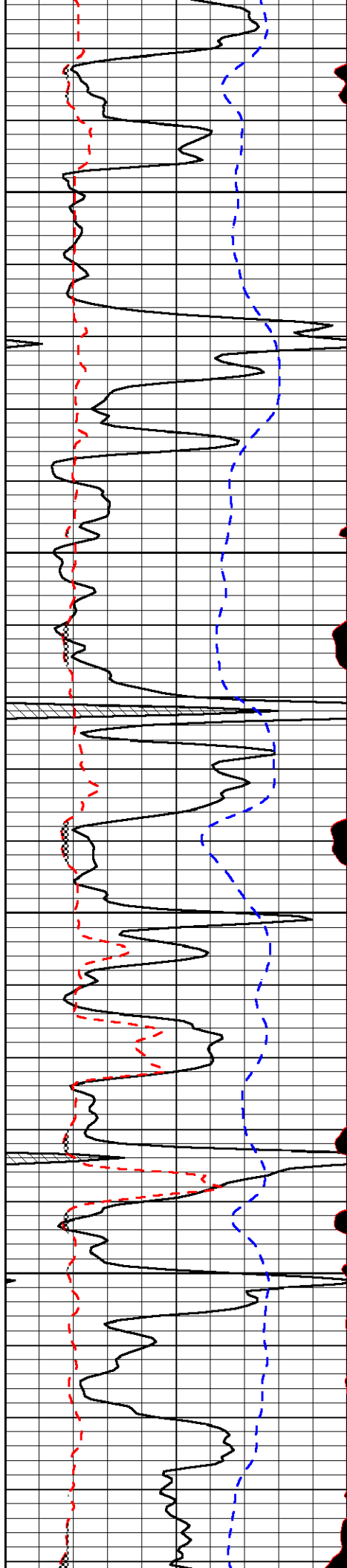


-31

-31

-30

-30

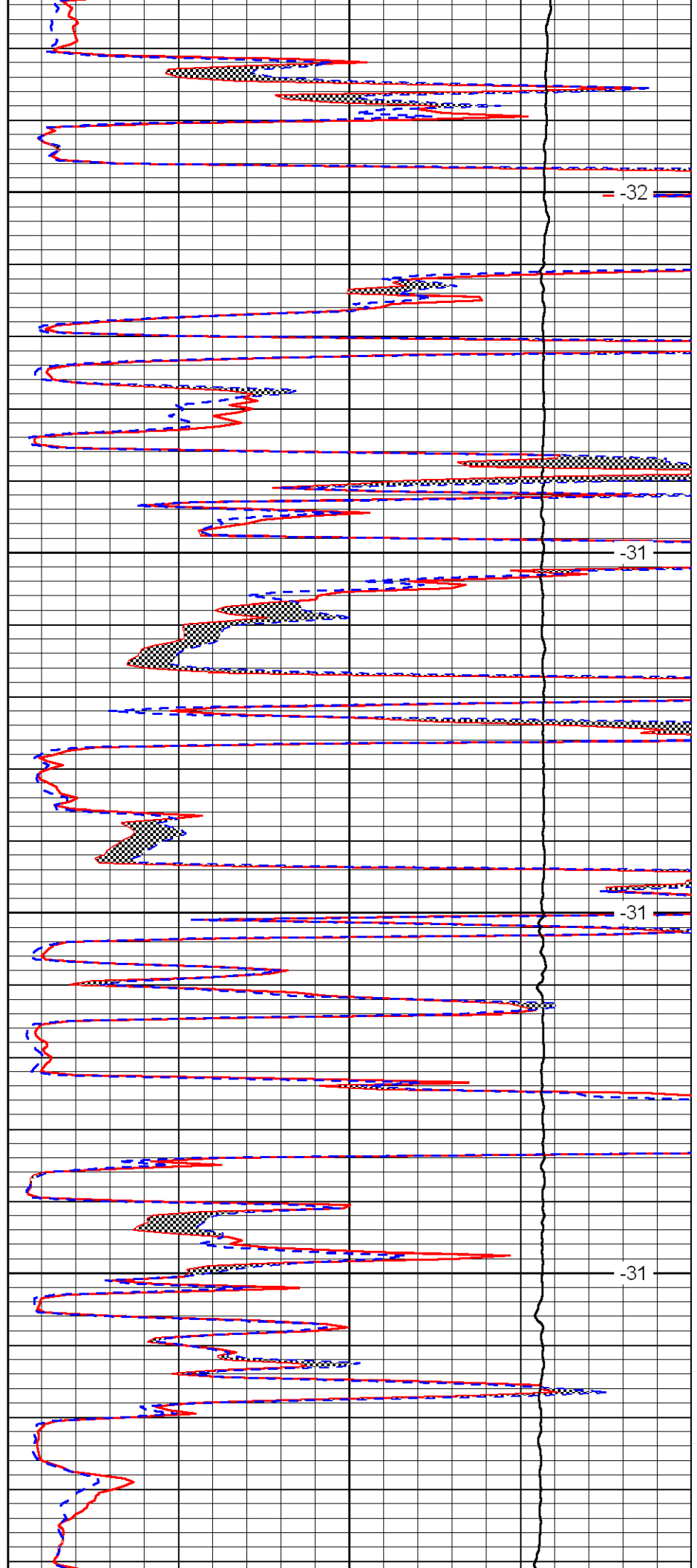


3850

3900

3950

4000

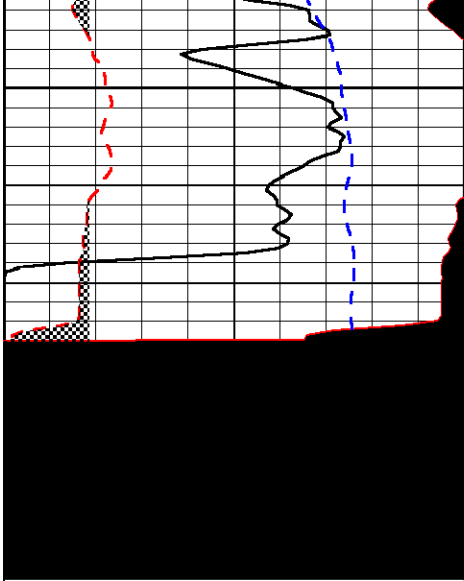


-32

-31

-31

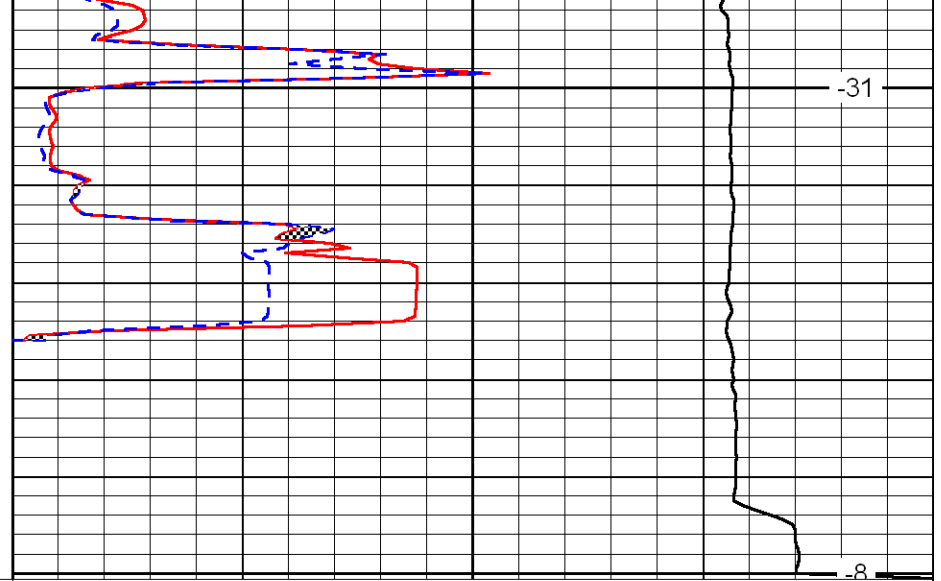
-31



0	Gamma Ray	150
6	MCAL (GAPI)	16
2.875	Mud Cake (GAPI)	7.875
-200	SP	0

4050

4100



0	Micro Inverse 1 X 1	40
0	Micro Normal 2''	40
10000	Line Weight	0

LSPD

-31

-8