



# Dual Induction Log

DIGITAL LOG (785) 625-3858

API No.	15-065-23,768-00-00	
Company	Culbreath Oil & Gas Co., Inc.	
Well	Ronald No. 1-8	
Field	Wildcat	
County	Graham	State Kansas
Location	SW NW SW 1650' FSL & 330' FWL	
Sec: 8	Twp: 9 S	Rge: 24 W
Permanent Datum	Ground Level	Elevation 2444
Log Measured From	Kelly Bushing	8 Ft. Above Perm. Datum
Drilling Measured From	Kelly Bushing	K.B. 2452 D.F. 2444 G.L. 2444

Date	9/03/2011	
Run Number	One	
Depth Driller	4094	
Depth Logger	4093	
Bottom Logged Interval	4092	
Top Log Interval	300	
Casing Driller	8.625 @ 344	
Casing Logger	346	
Bit Size	7.875	
Type Fluid in Hole	Chemical	
Salinity, ppm CL	800	
Density / Viscosity	9.3	60
pH / Fluid Loss	10.5	7.2
Source of Sample	Flowline	
Rm @ Meas. Temp	1.2 @ 73	
Rmf @ Meas. Temp	.90 @ 73	
Rmc @ Meas. Temp	1.62 @ 73	
Source of Rmf / Rmc	Charts	
Rm @ BHT	.74 @ 119	
Operating Rig Time	5 Hours	
Max Rec. Temp. F	119	
Equipment Number	91	
Location	Hays	
Recorded By	K. Bange	
Witnessed By	Pat Deenihan	

<<< Fold Here >>>

All interpretations are opinions based on inferences from electrical or other measurements and we cannot and do not guarantee the accuracy or correctness of any interpretation, and we shall not, except in the case of gross or willful negligence on our part, be liable or responsible for any loss, costs, damages, or expenses incurred or sustained by anyone resulting from any interpretation made by any of our officers, agents or employees. These interpretations are also subject to our general terms and conditions set out in our current Price Schedule.

### Comments

Thank you for using Log-Tech, Inc.  
 (785) 625-3858

Wakeeney, N to Red Line, 8 W to 180th,  
 3 N to K rd, 1/2 W, N into

Database File: culbreath090311hd.db  
 Dataset Pathname: dil/@00000e60  
 Presentation Format: dil2in  
 Dataset Creation: Sat Sep 03 08:13:40 2011  
 Charted by: Depth in Feet scaled 1:600

0	Gamma Ray	150
-200	SP	0

0	Shallow Resistivity	50
0	Deep Resistivity	50

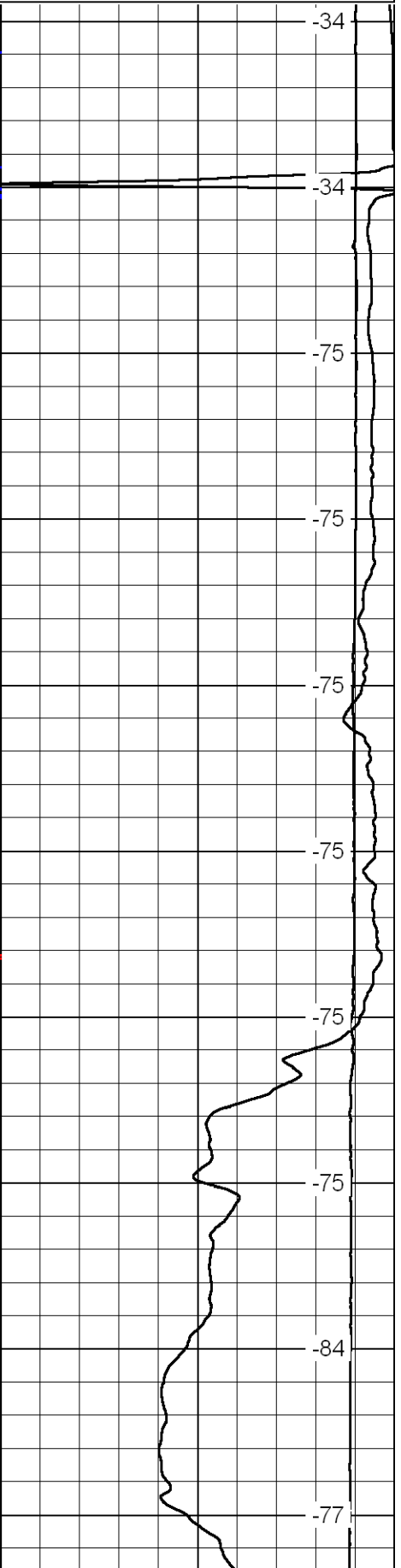
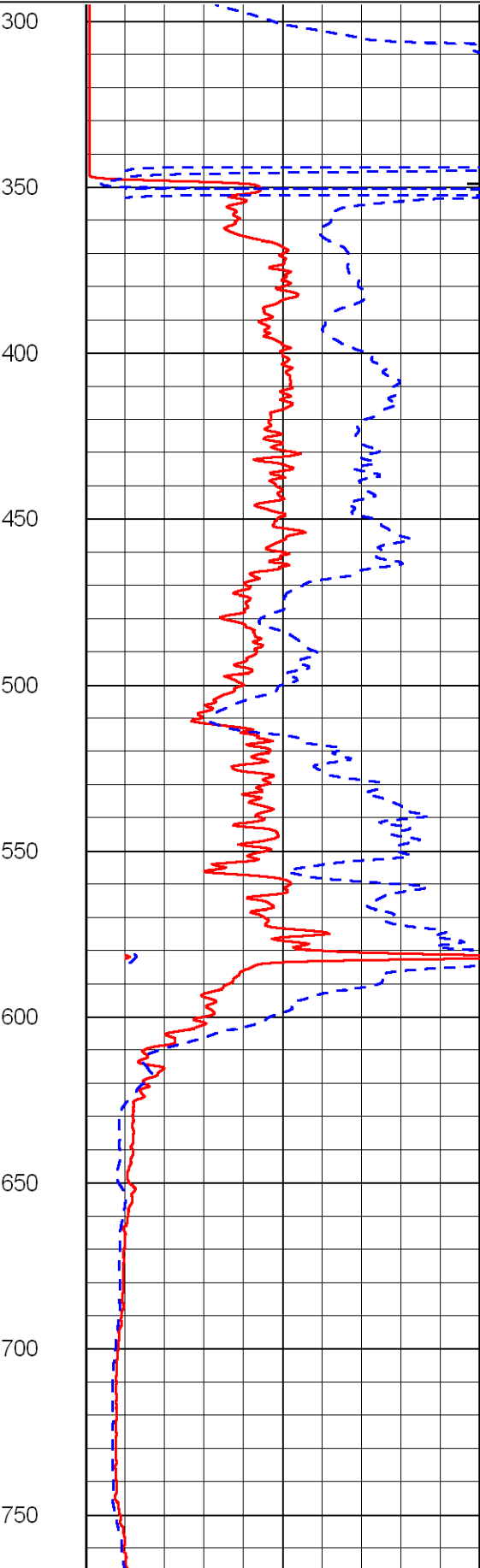
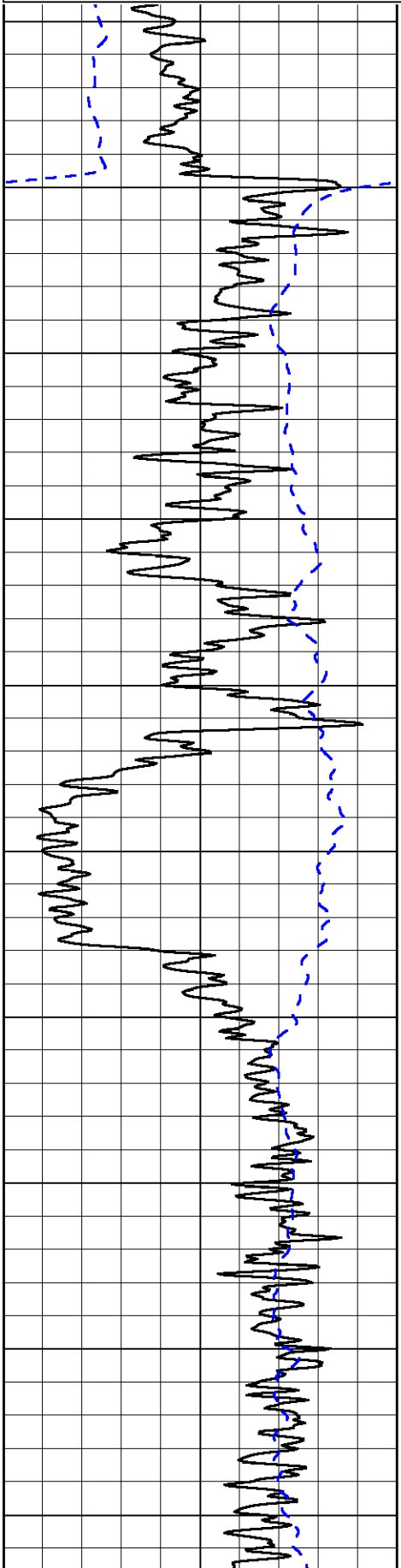
LSPD

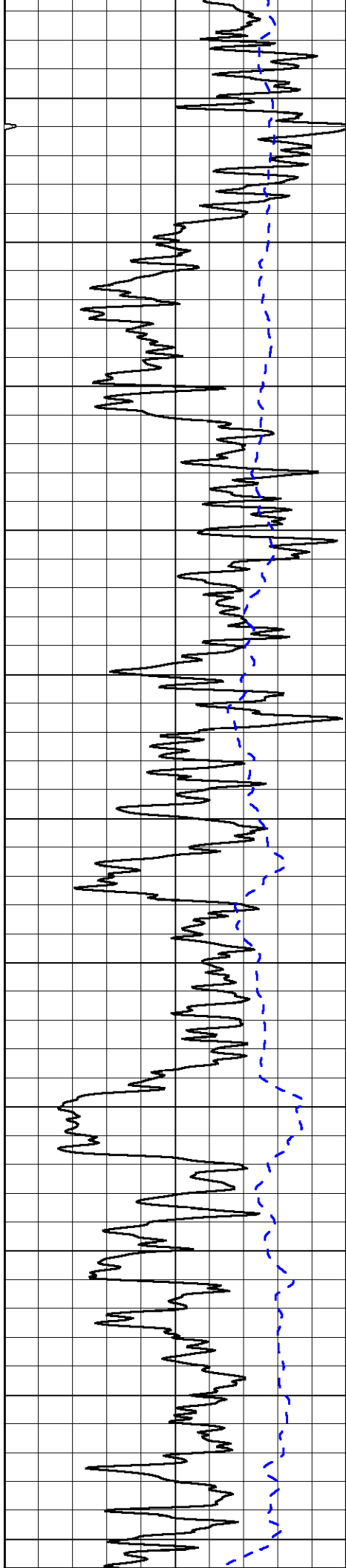
1000	Conductivity	0
------	--------------	---

15000	Line Tension	0
-------	--------------	---

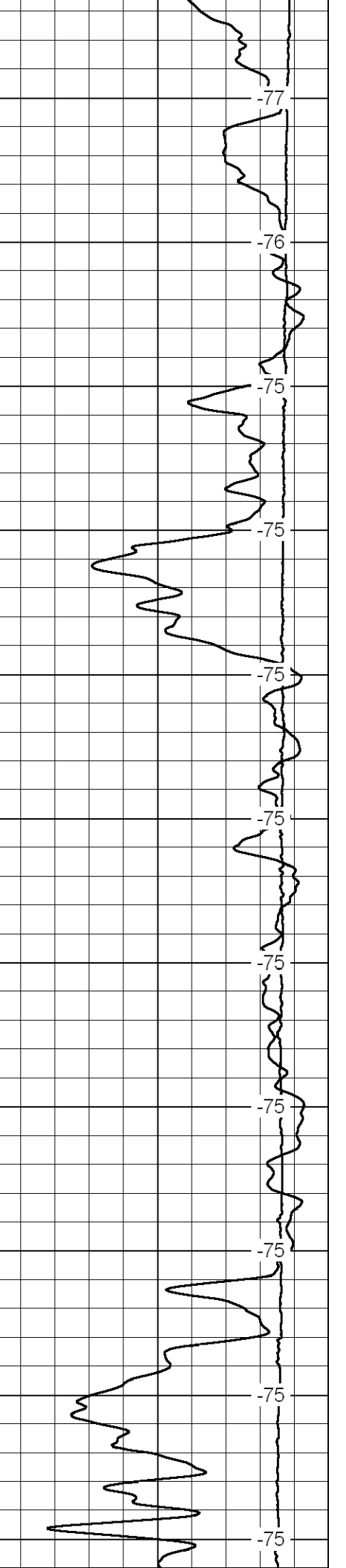
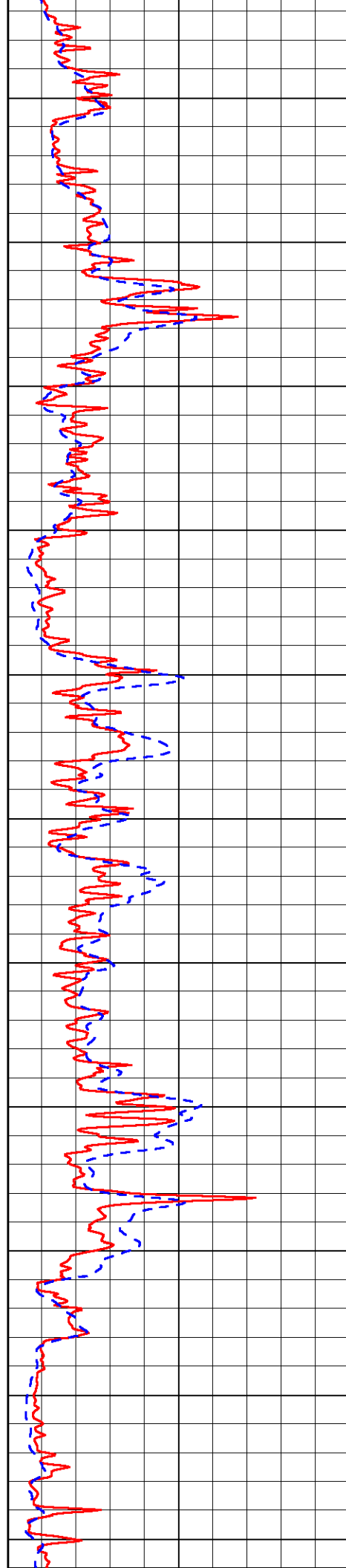
50	Shallow Resistivity	500
----	---------------------	-----

50	Deep Resistivity	500
----	------------------	-----

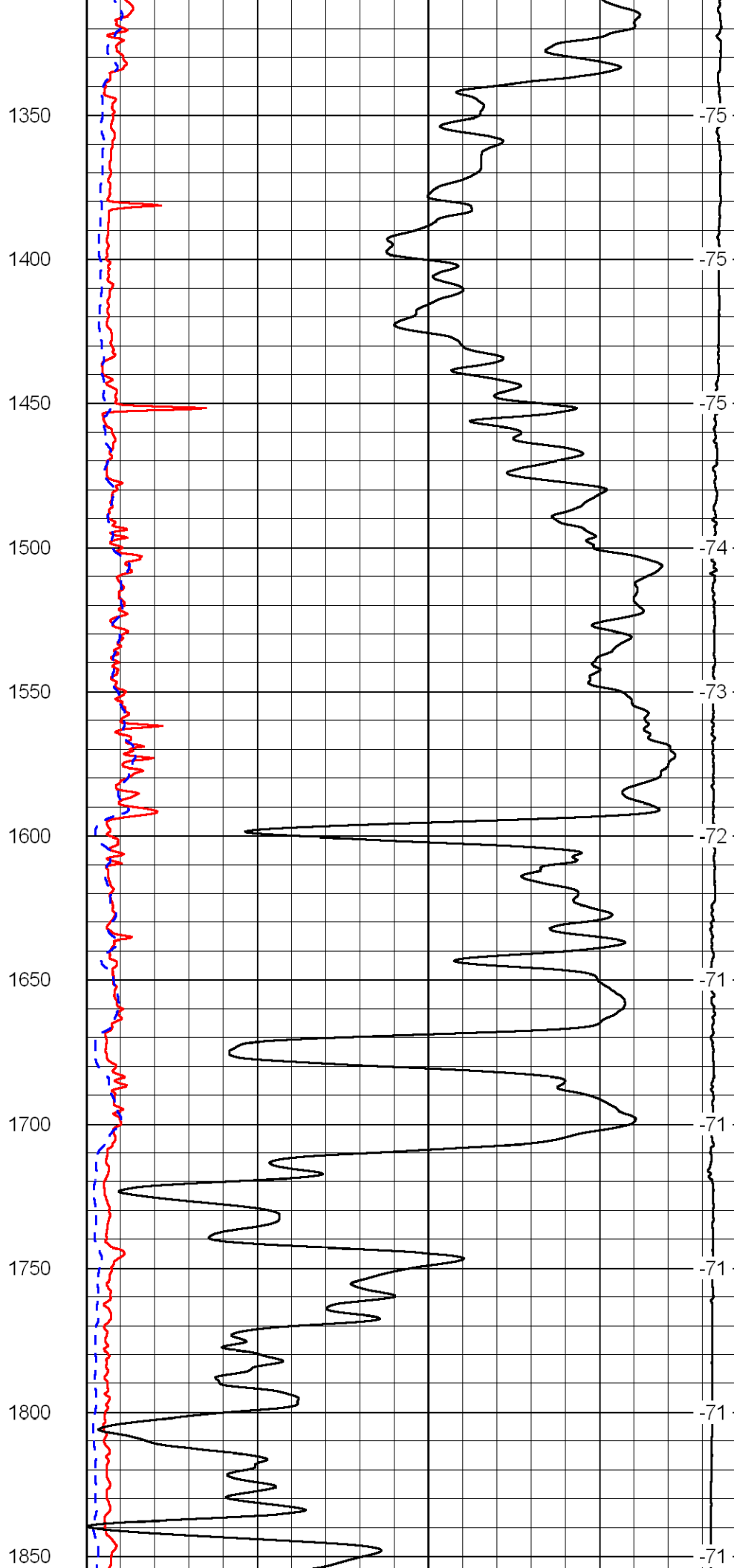
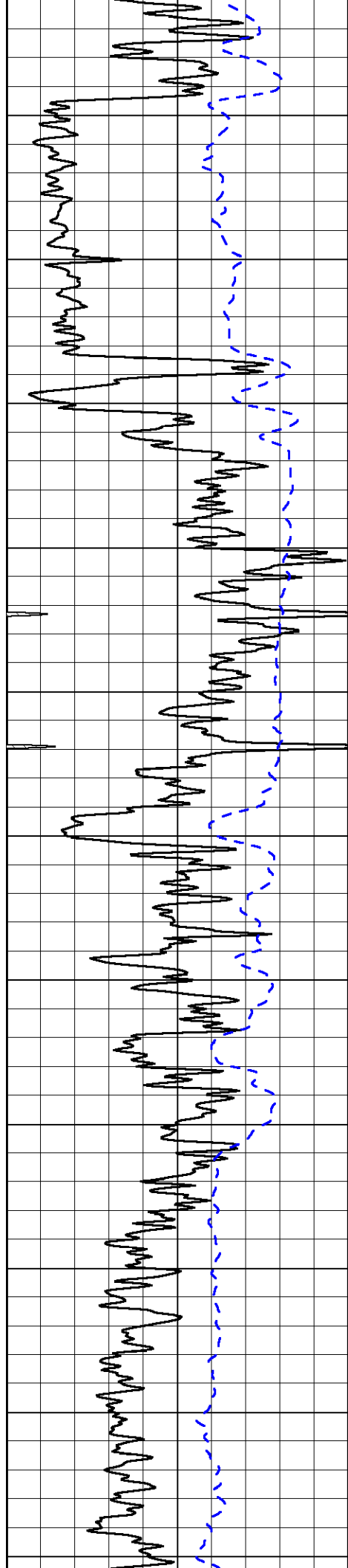


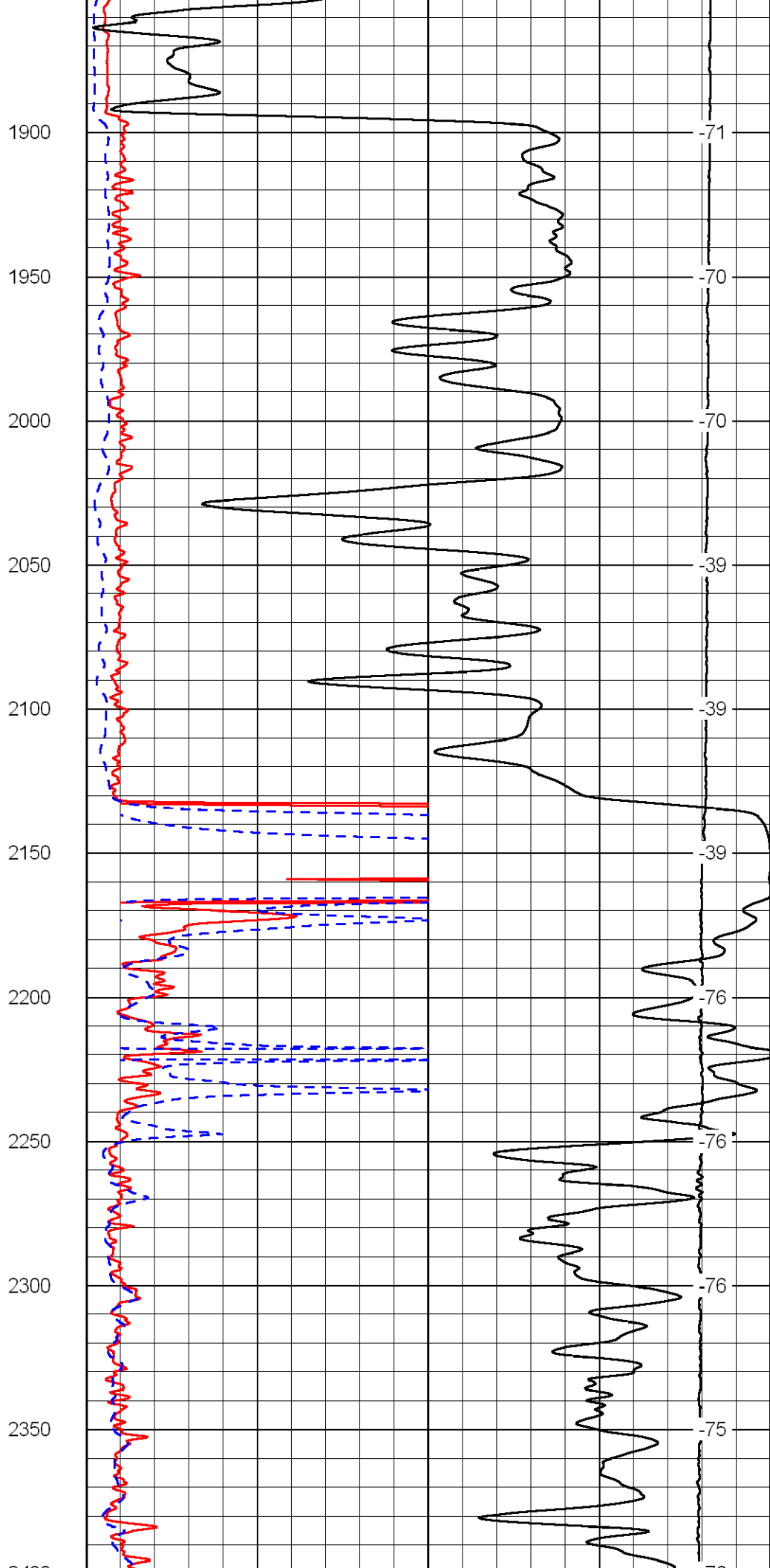
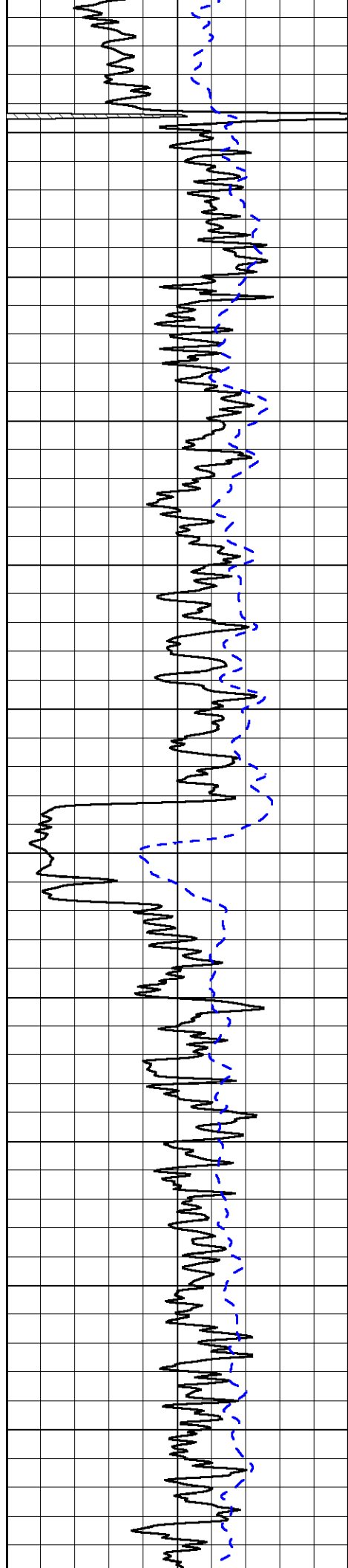


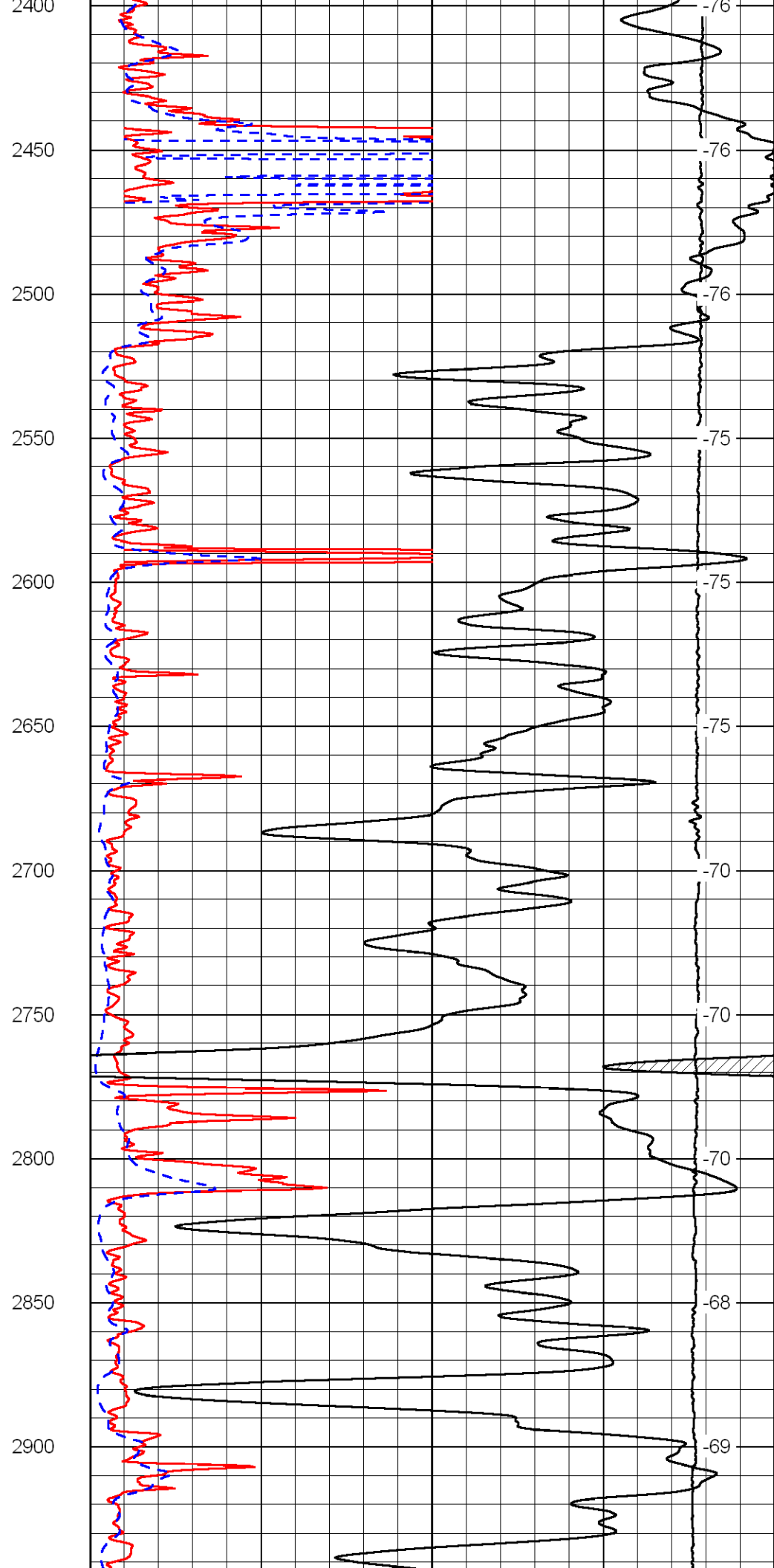
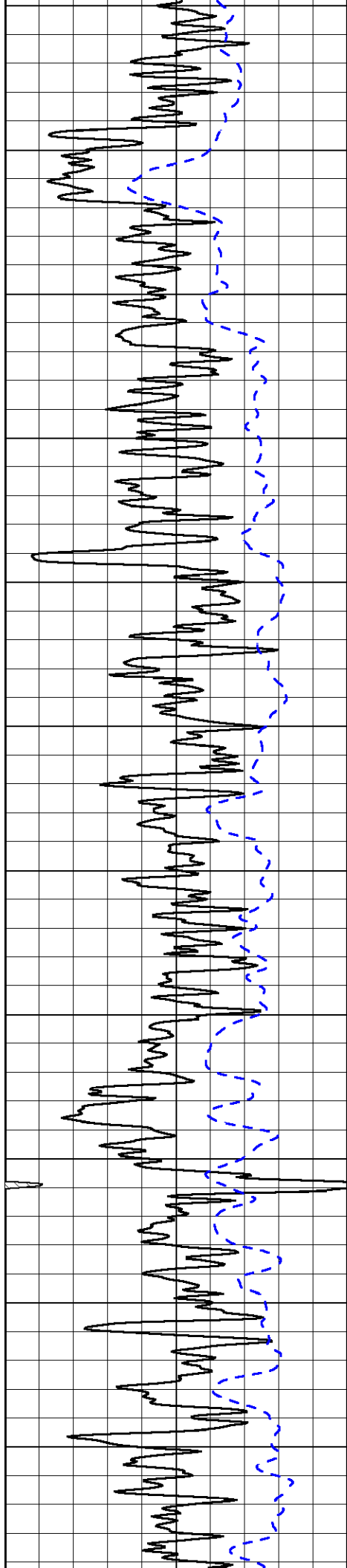
800  
850  
900  
950  
1000  
1050  
1100  
1150  
1200  
1250  
1300

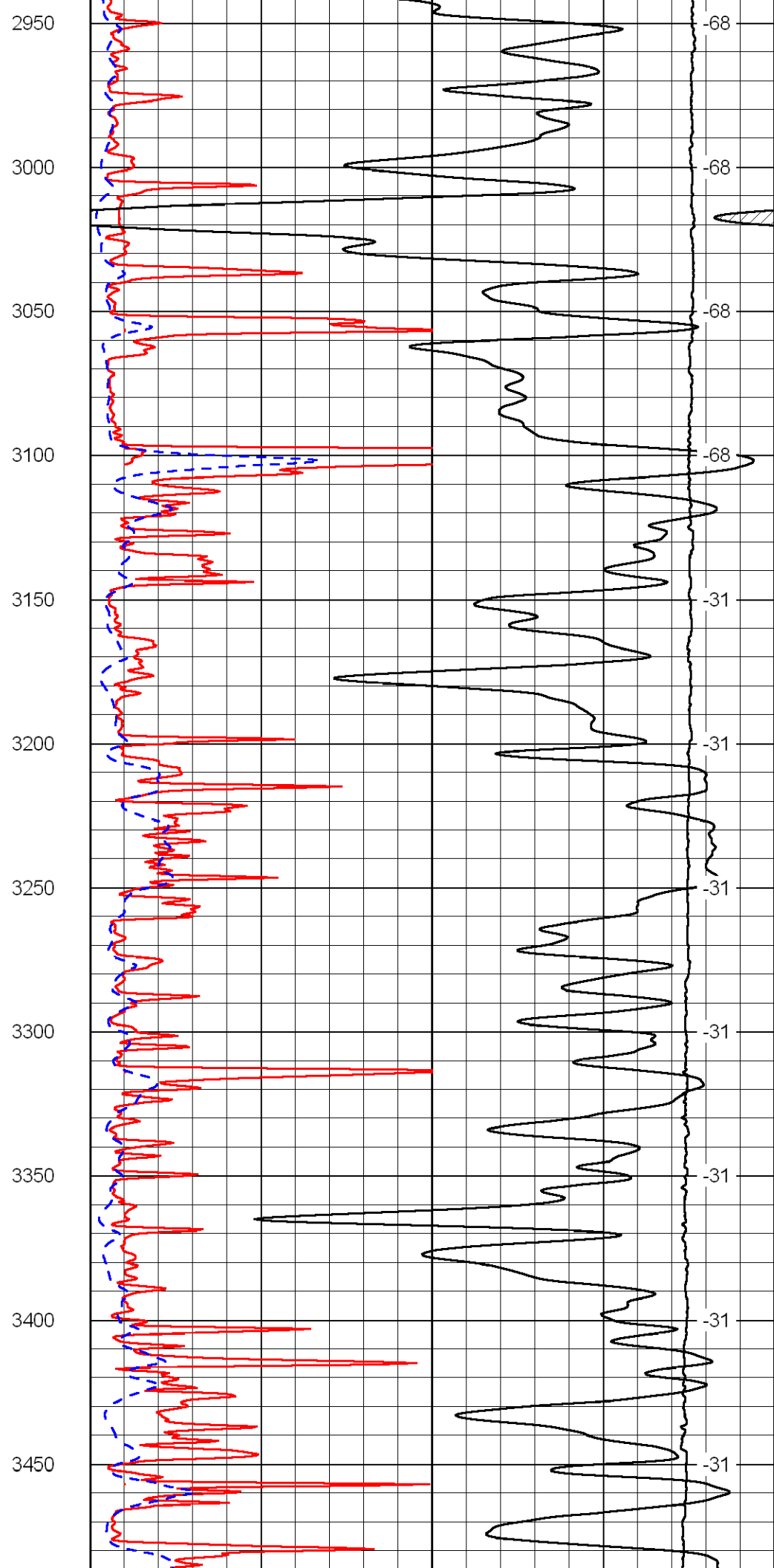
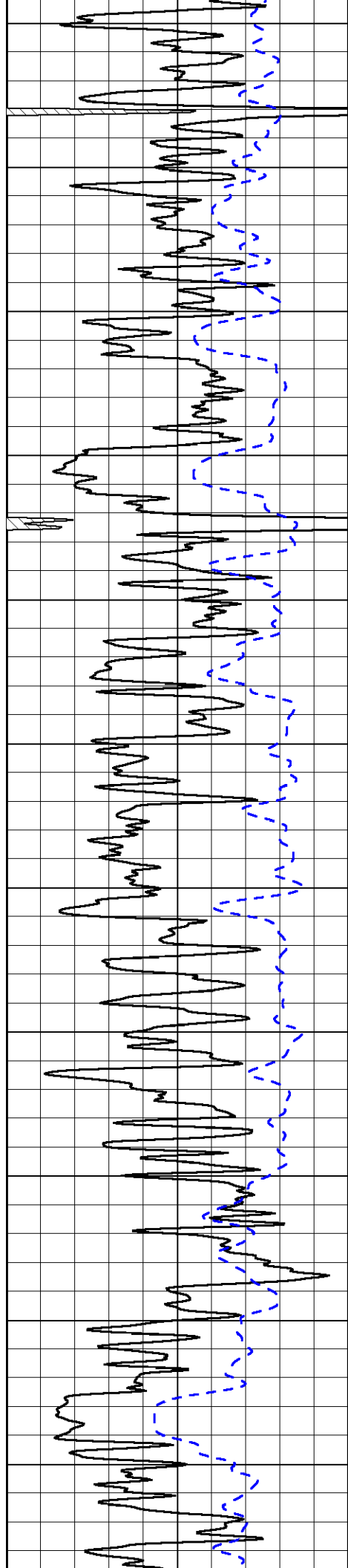


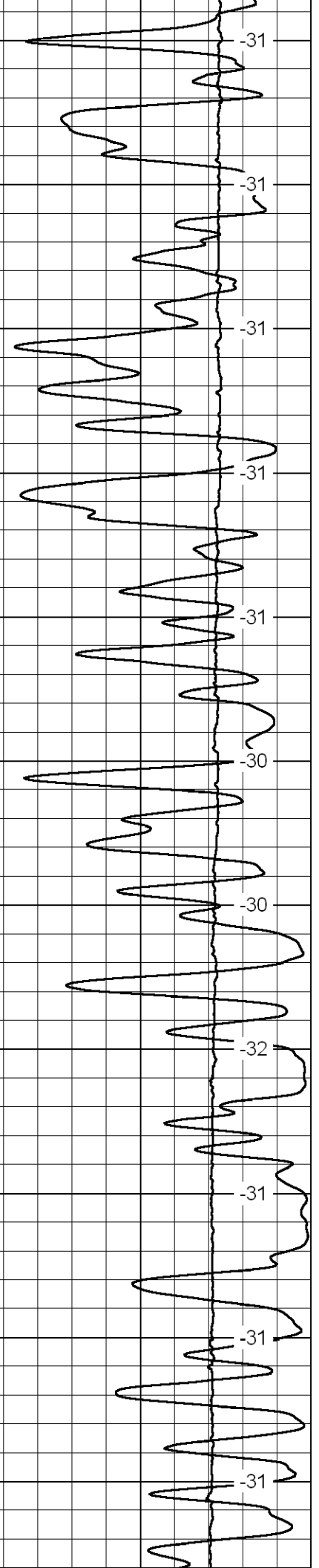
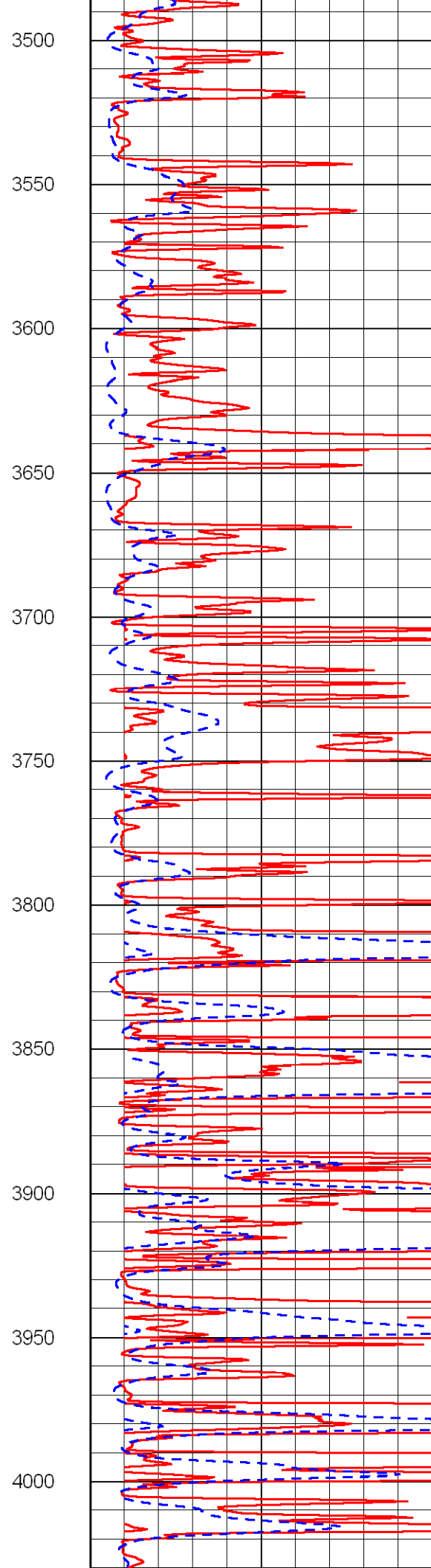
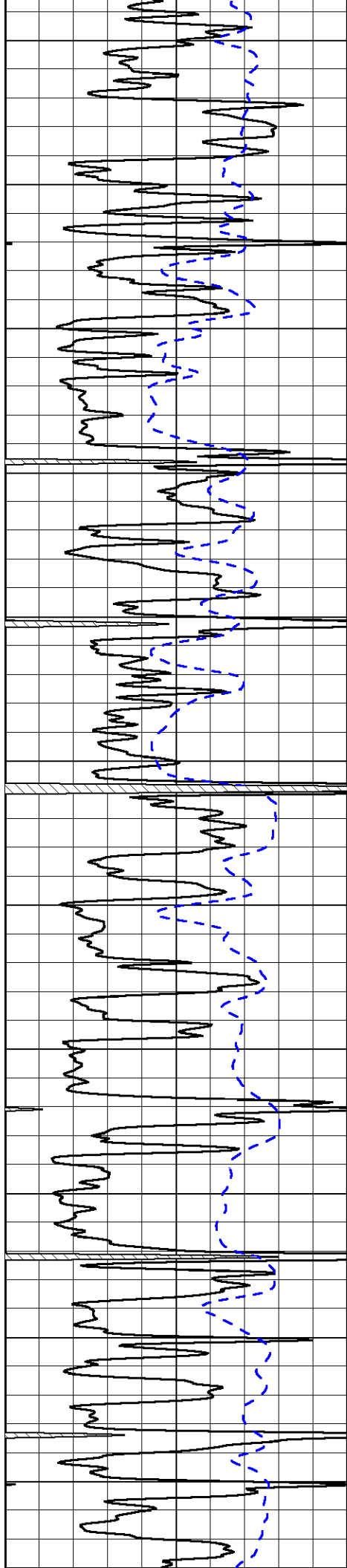
-77  
-76  
-75  
-75  
-75  
-75  
-75  
-75  
-75  
-75  
-75  
-75

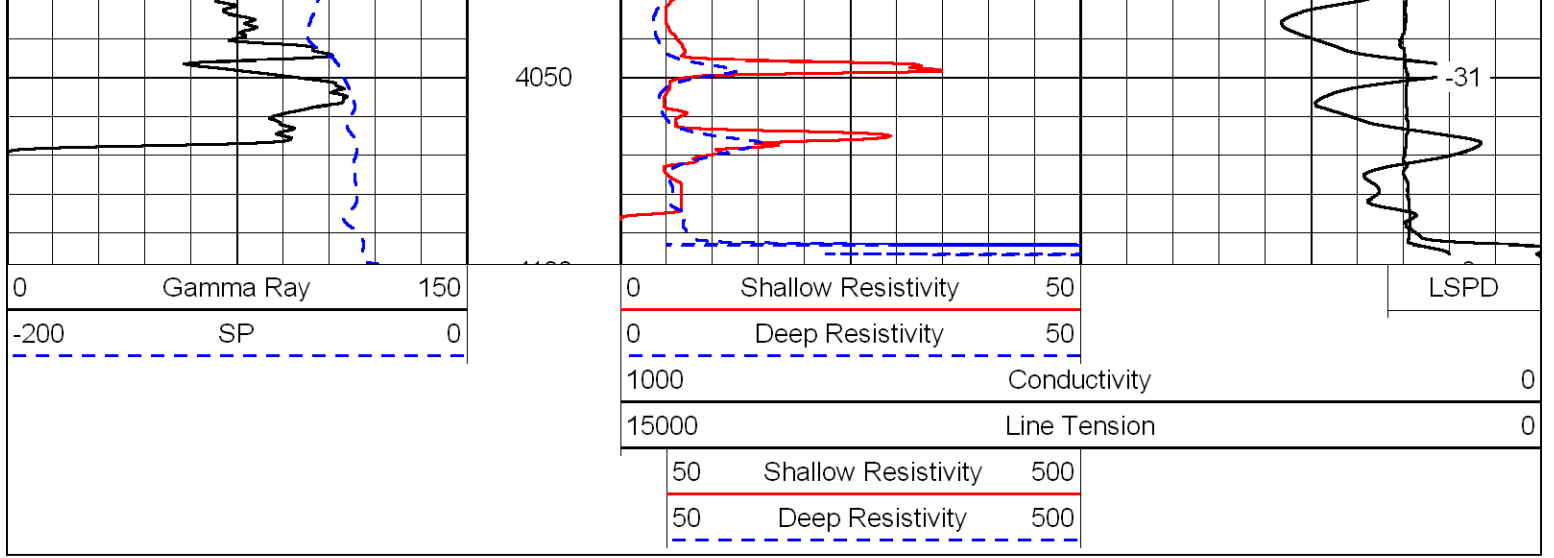




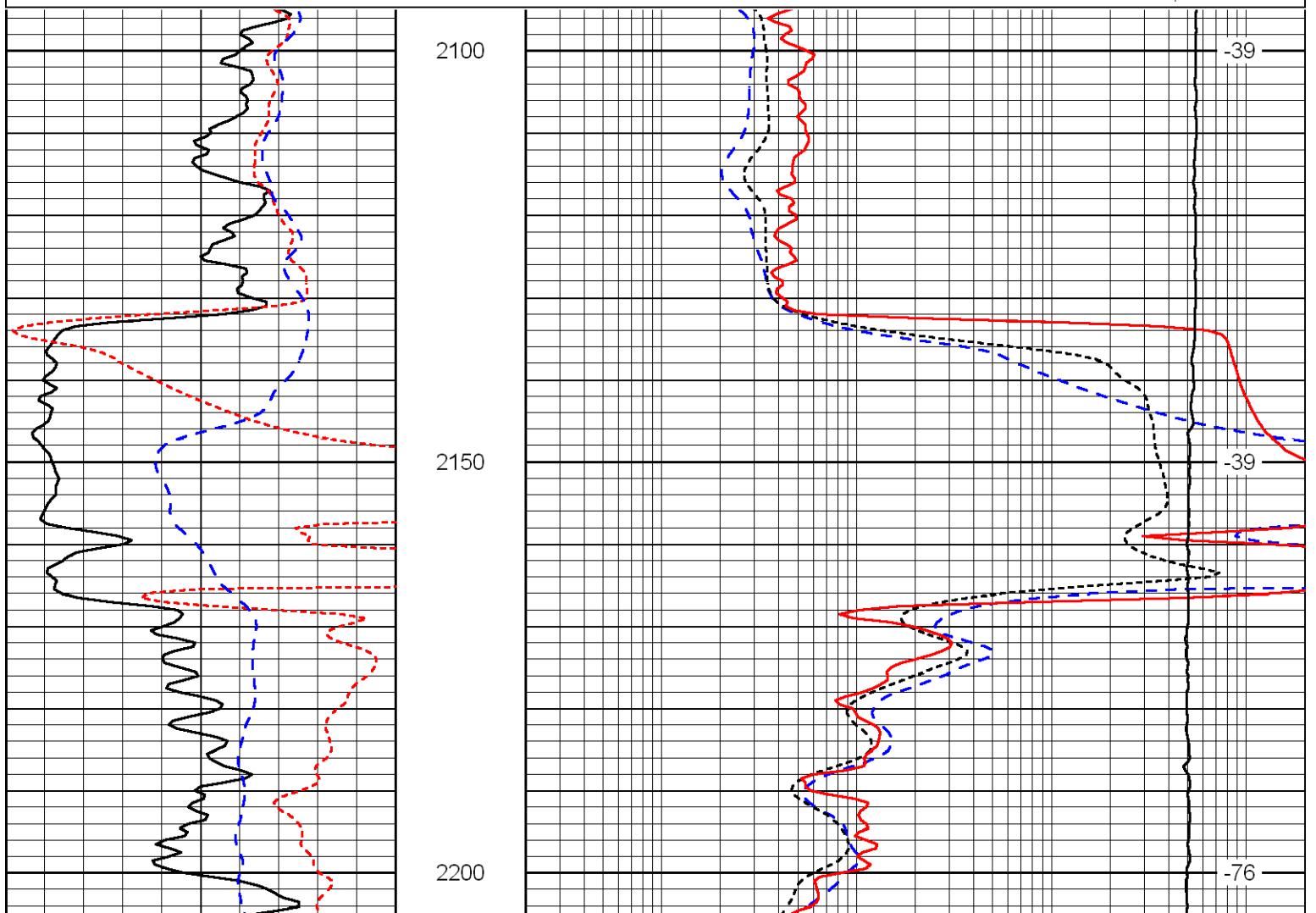
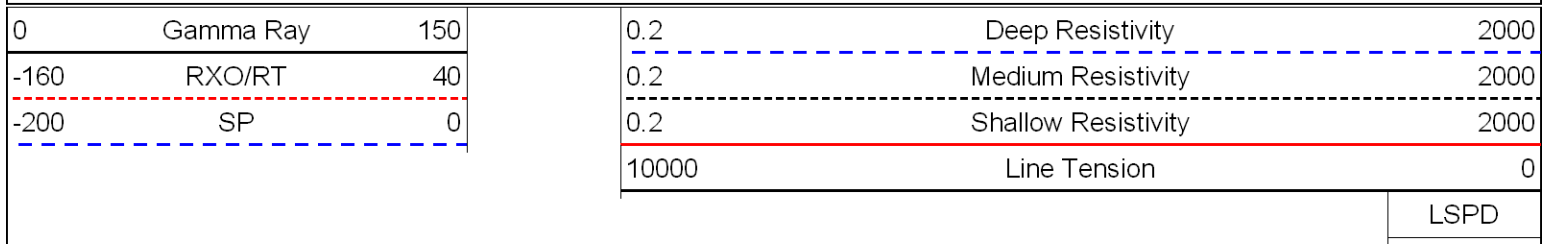








Database File: culbreath090311hd.db  
 Dataset Pathname: dil/@00000e60  
 Presentation Format: dil  
 Dataset Creation: Sat Sep 03 08:13:40 2011  
 Charted by: Depth in Feet scaled 1:240



0	Gamma Ray	150
-160	RXO/RT	40
-200	SP	0

0.2	Deep Resistivity	2000
0.2	Medium Resistivity	2000
0.2	Shallow Resistivity	2000
10000	Line Tension	0

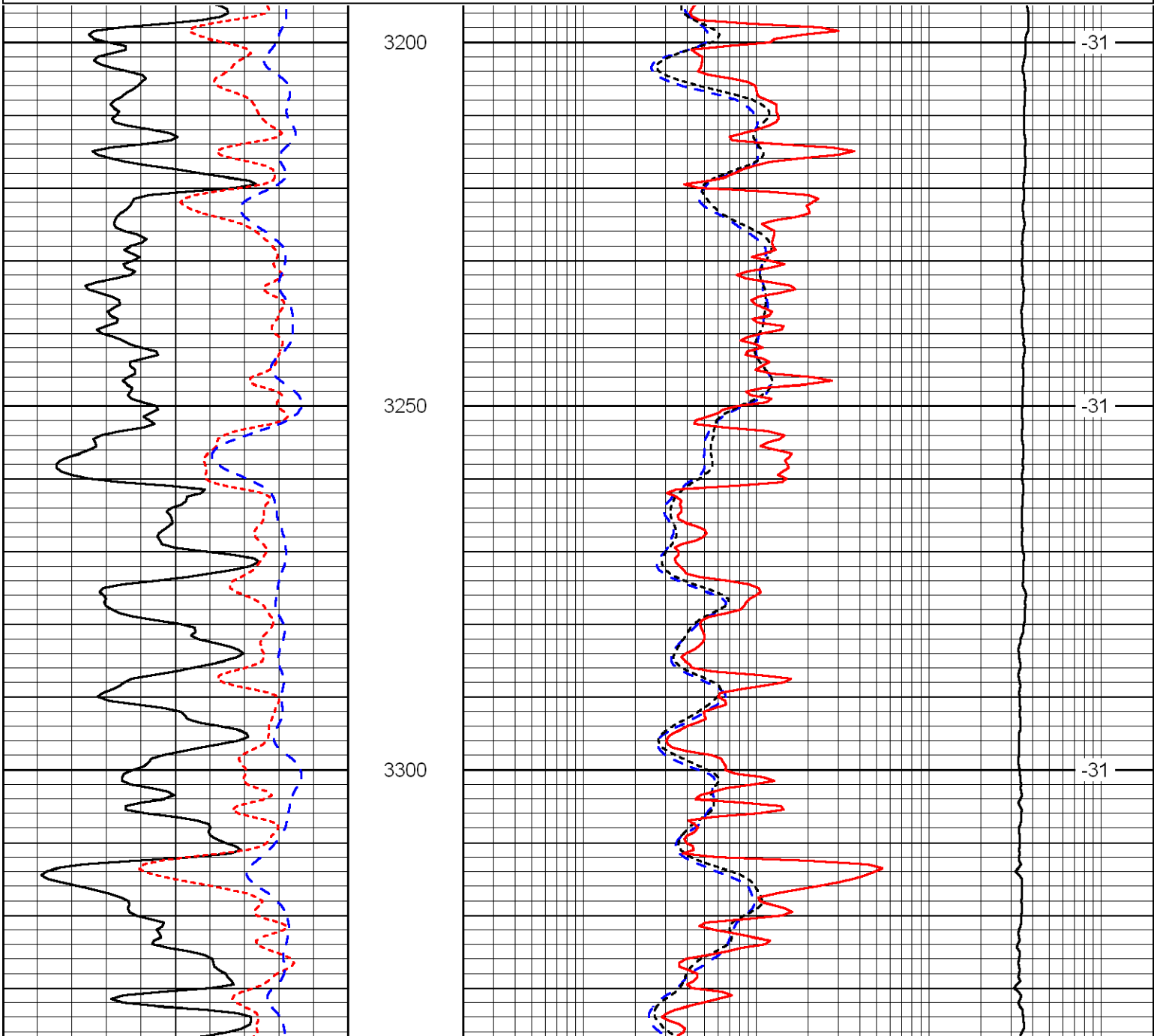
LSPD

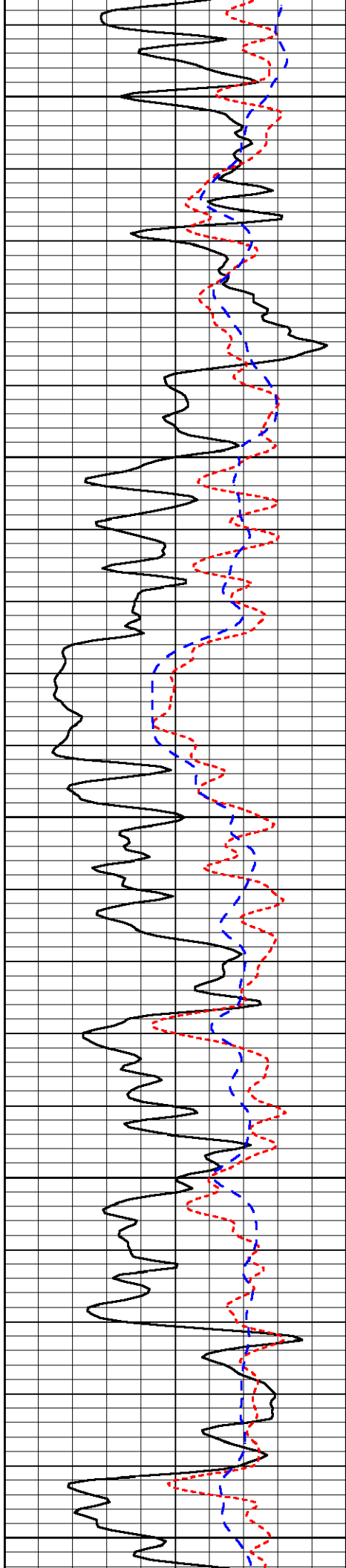
Database File: culbreath090311hd.db  
 Dataset Pathname: dil/@00000e60  
 Presentation Format: dil  
 Dataset Creation: Sat Sep 03 08:13:40 2011  
 Charted by: Depth in Feet scaled 1:240

0	Gamma Ray	150
-160	RXO/RT	40
-200	SP	0

0.2	Deep Resistivity	2000
0.2	Medium Resistivity	2000
0.2	Shallow Resistivity	2000
10000	Line Tension	0

LSPD





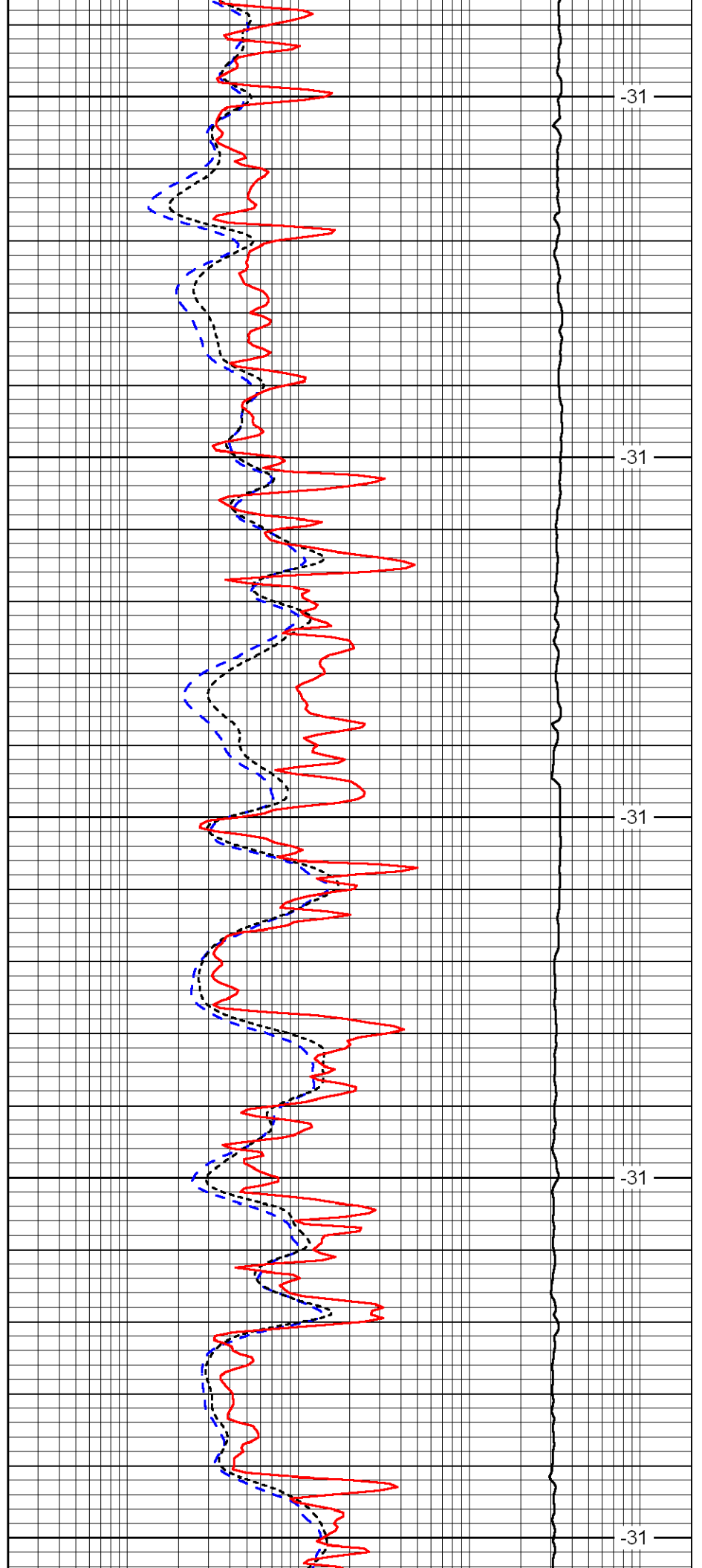
3350

3400

3450

3500

3550



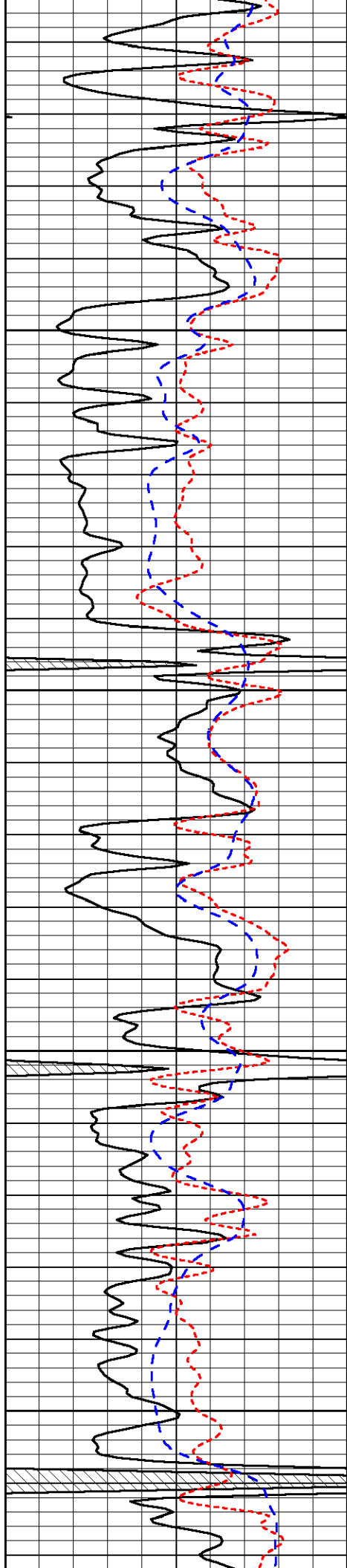
-31

-31

-31

-31

-31

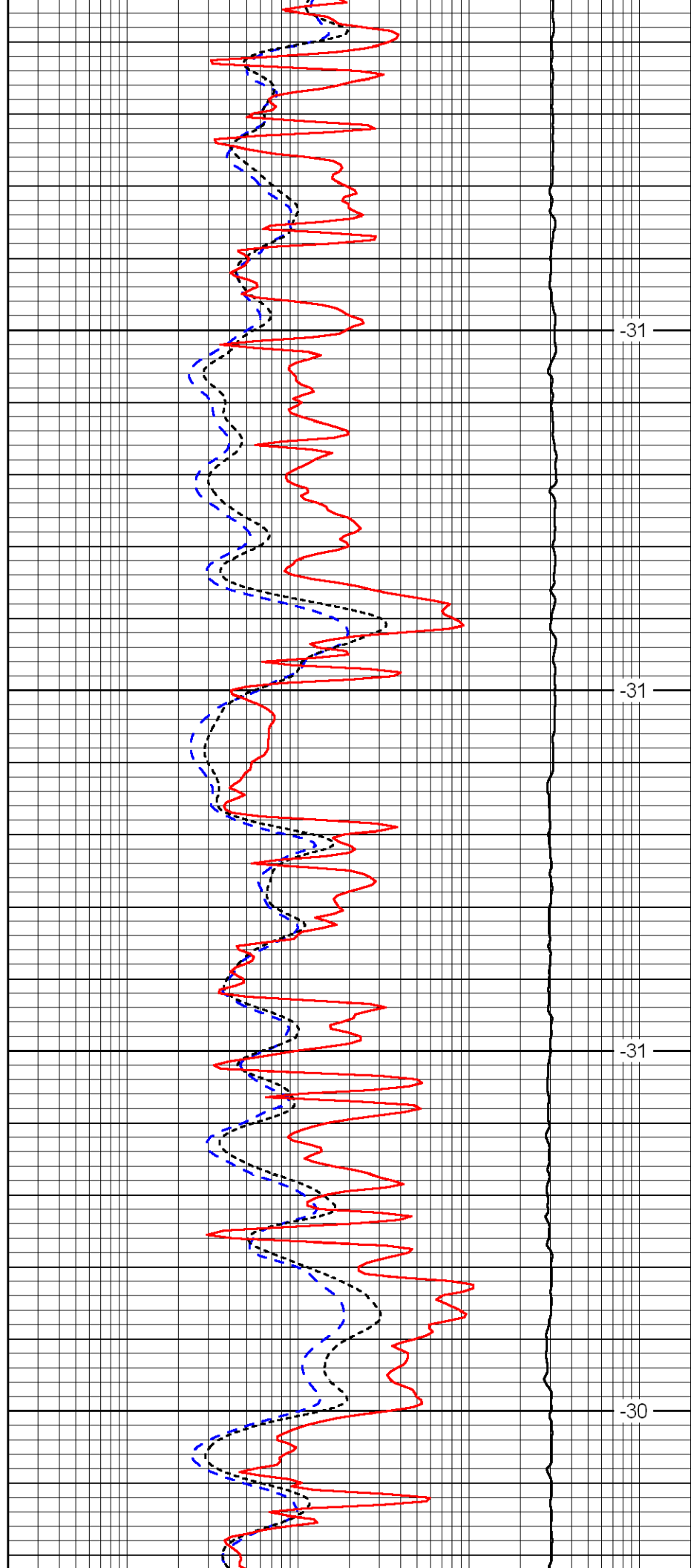


3600

3650

3700

3750

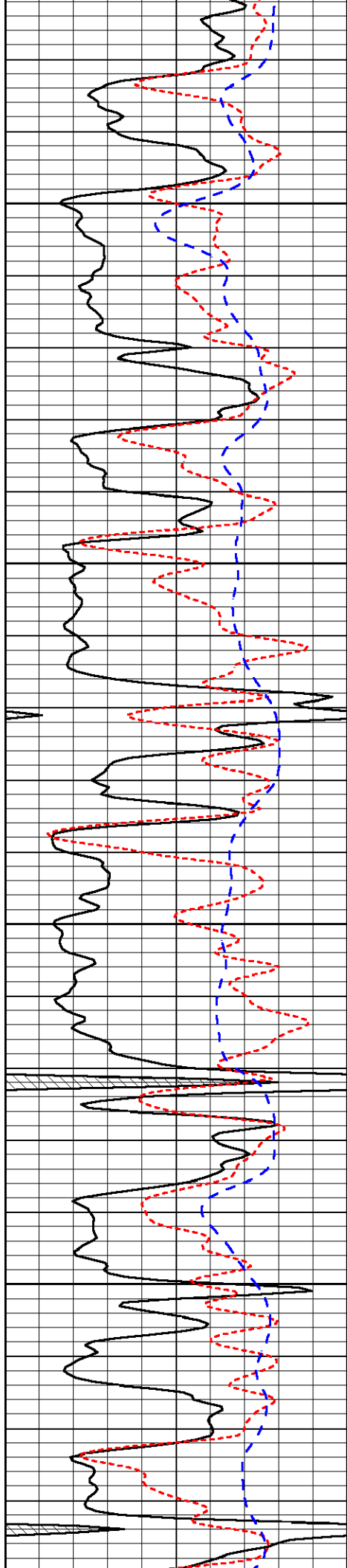


-31

-31

-31

-30

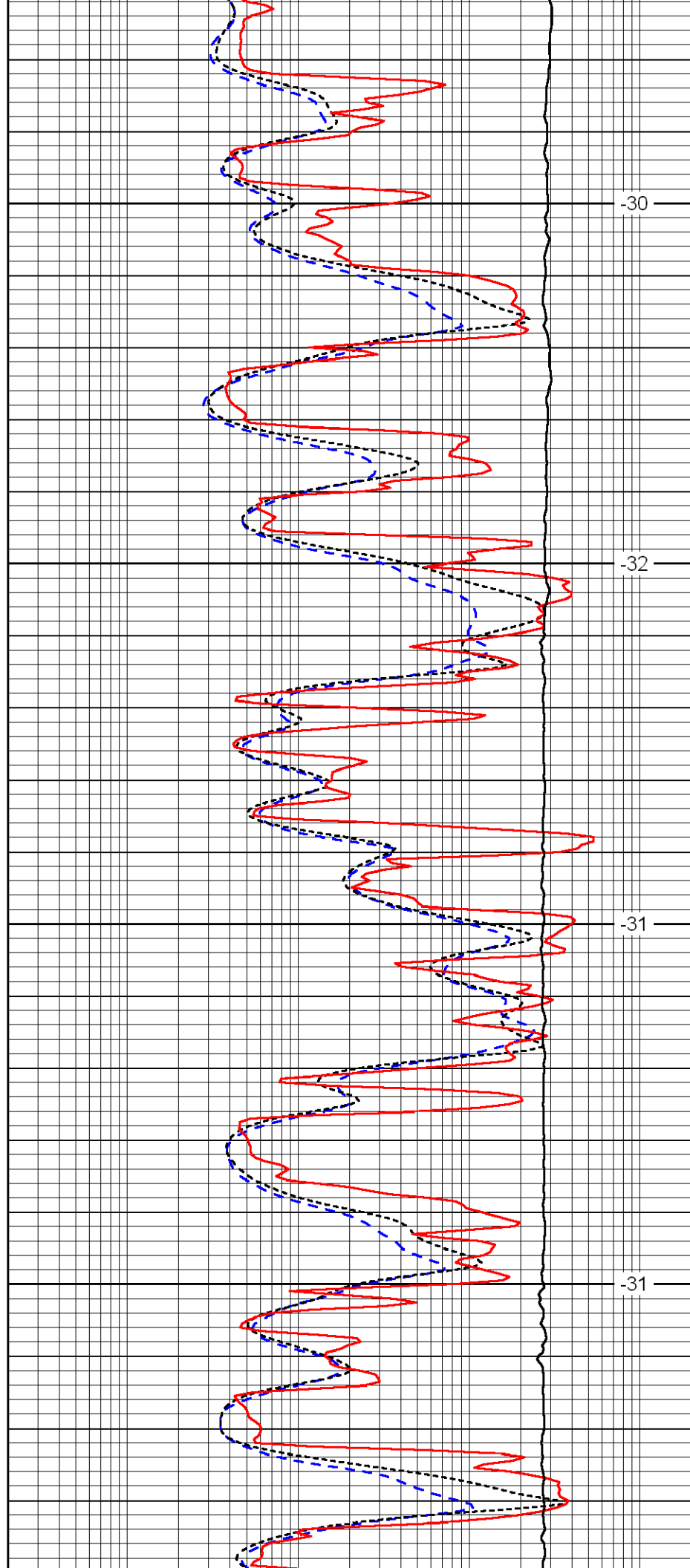


3800

3850

3900

3950

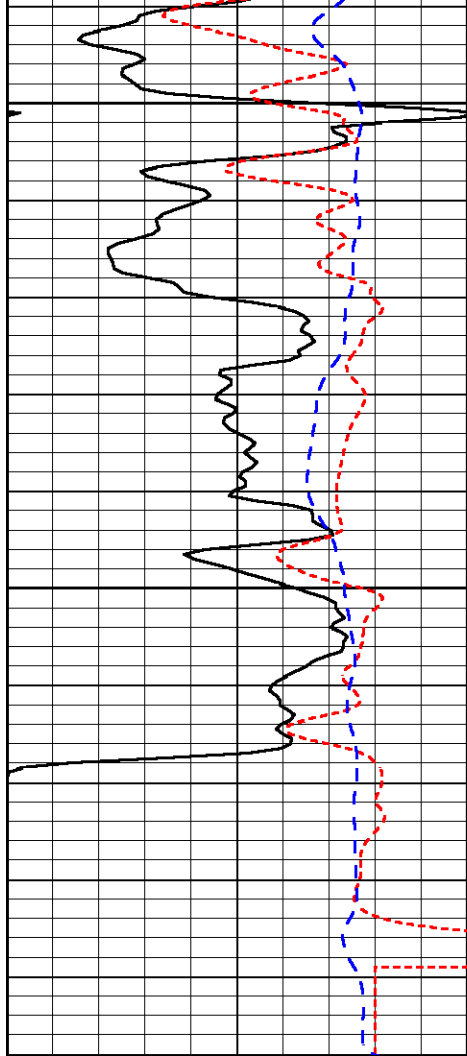


-30

-32

-31

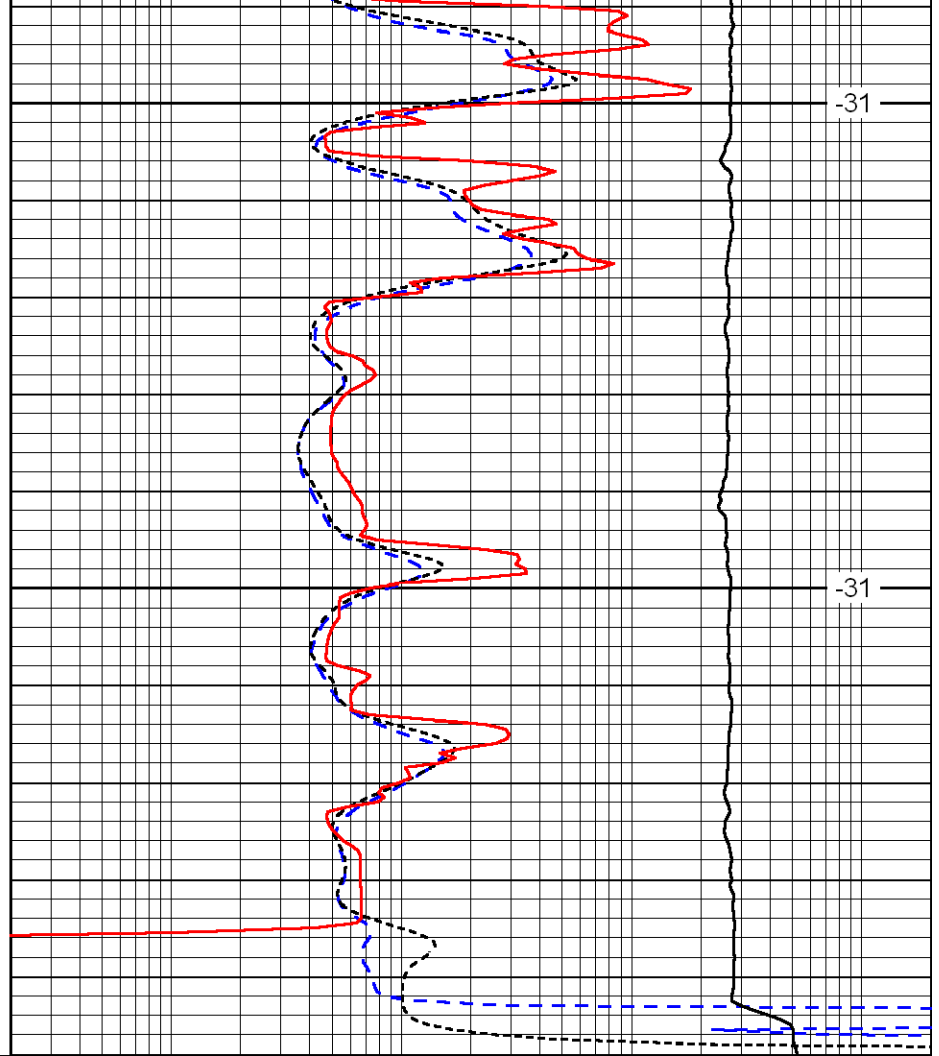
-31



4000

4050

0	Gamma Ray	150
-160	RXO/RT	40
-200	SP	0



-31

-31

0.2	Deep Resistivity	2000
0.2	Medium Resistivity	2000
0.2	Shallow Resistivity	2000
10000	Line Tension	0

LSPD