



# Dual Induction Log

**DIGITAL LOG** (785) 625-3858

API No.	15-083-21,649-00-00		
Company	American Warrior, Inc.		
Well	King No. 1-4		
Field	Wildcat		
County	Hodgeman	State	Kansas
Location	1,394' FNL & 924' FEL		
Sec: 4	Twp: 23S	Rge: 24W	
Other Services	CNL/CDL MEL/BHCS		

Permanent Datum	Ground Level	Elevation 2363
Log Measured From	Kelly Bushing	8 Ft. Above Perm. Datum
Drilling Measured From	Kelly Bushing	

Date	6/18/2010	
Run Number	One	
Depth Driller	4725	
Depth Logger	4726	
Bottom Logged Interval	4725	
Top Log Interval	300	
Casing Driller	8.625 @ 306	
Casing Logger	300	
Bit Size	7.875	
Type Fluid in Hole	Chemical	
Salinity, ppm CL	4200	
Density / Viscosity	9.3	51
pH / Fluid Loss	8.0	11.2
Source of Sample	Flowline	
Rm @ Meas. Temp	.90	@ 74
Rmf @ Meas. Temp	.68	@ 74
Rmc @ Meas. Temp	.122	@ 74
Source of Rmf / Rmc	Charts	
Rm @ BHT	.56	@ 125
Operating Rig Time	4 1/2 Hours	
Max Rec. Temp. F	125	
Equipment Number	10	
Location	Hays	
Recorded By	J. Long	
Witnessed By	Gil Linenberger	

<<< Fold Here >>>

All interpretations are opinions based on inferences from electrical or other measurements and we cannot and do not guarantee the accuracy or correctness of any interpretation, and we shall not, except in the case of gross or willful negligence on our part, be liable or responsible for any loss, costs, damages, or expenses incurred or sustained by anyone resulting from any interpretation made by any of our officers, agents or employees. These interpretations are also subject to our general terms and conditions set out in our current Price Schedule.

**Comments**

Thank you for using Log-Tech, Inc.  
(785) 625-3858

Jetmore, 3 West, 1/4 South, West Into

Database File: c:\warrior\data\amwar\_king no. 1-4\amwarriorhd.db  
 Dataset Pathname: dil/amwrstck  
 Presentation Format: dil2in  
 Dataset Creation: Sat Jun 19 00:34:46 2010  
 Charted by: Depth in Feet scaled 1:600

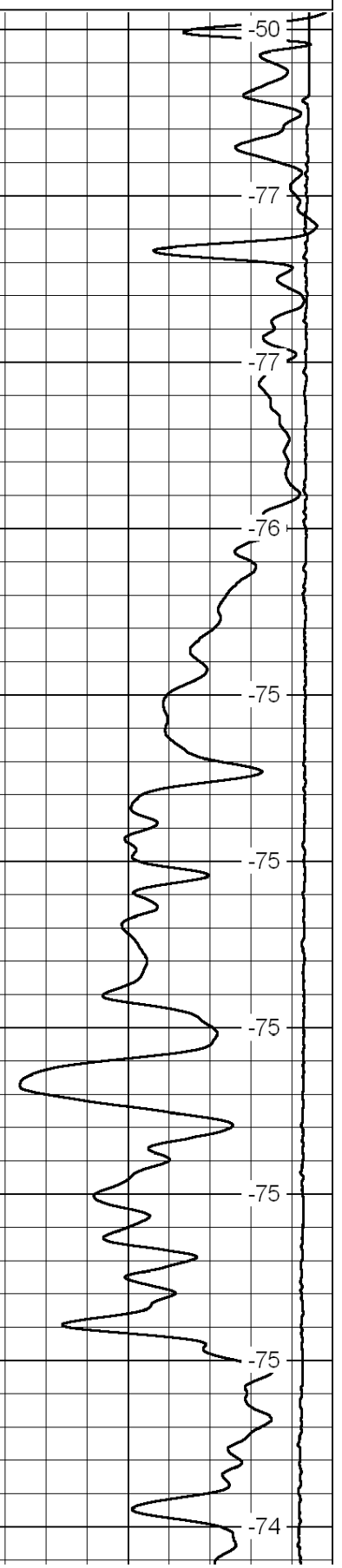
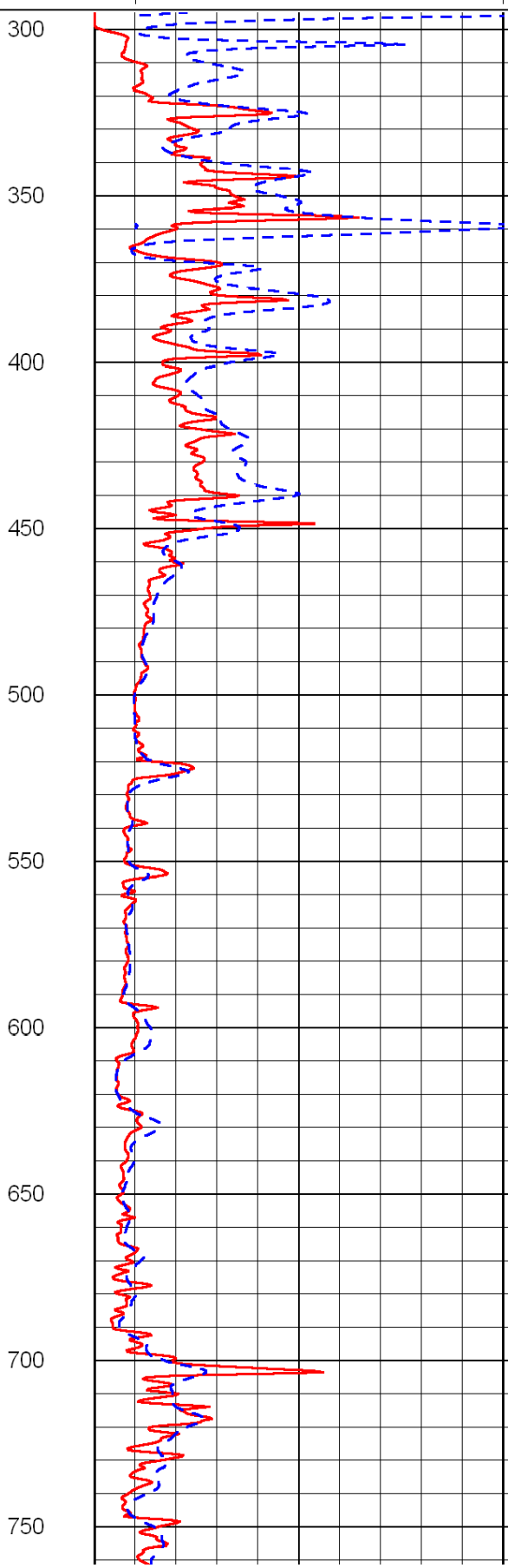
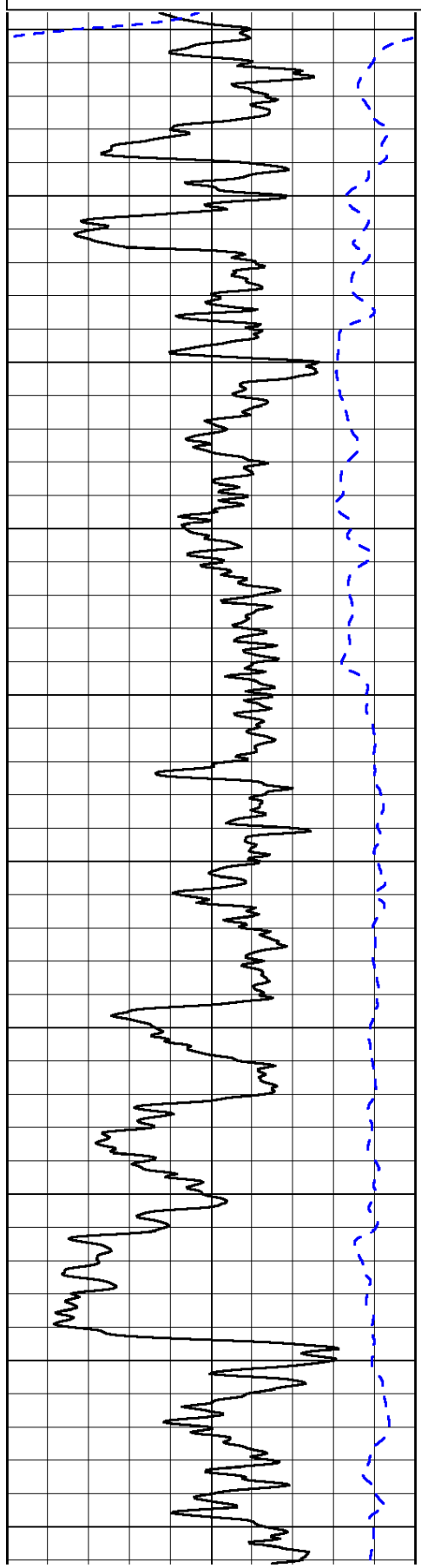
0	Gamma Ray	150
-200	SP (mV)	0

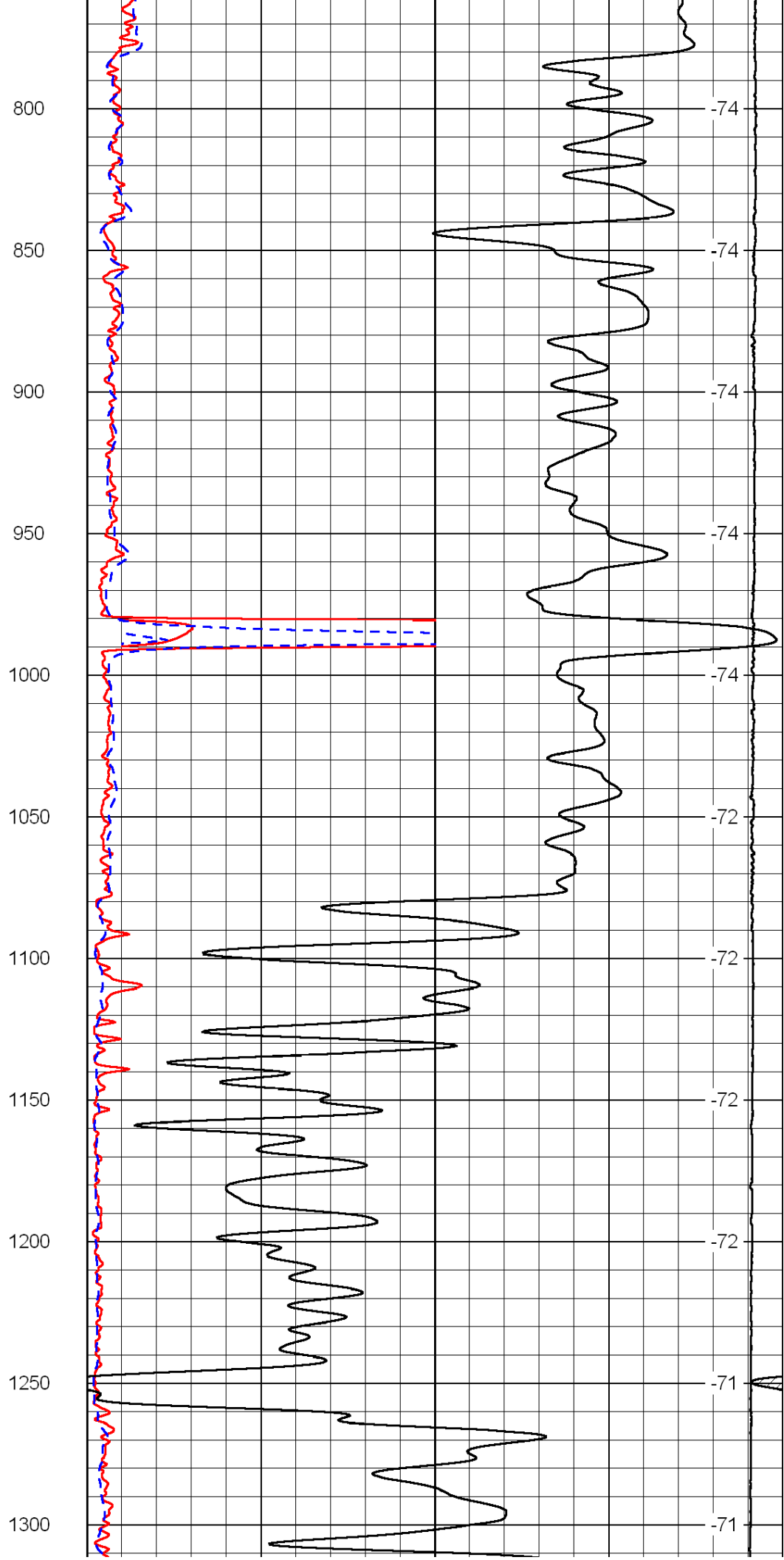
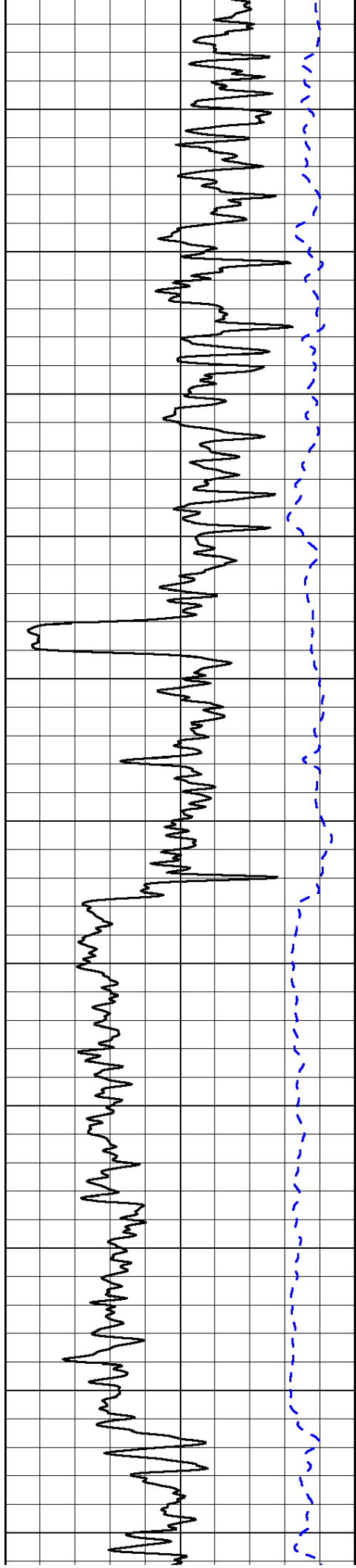
0	Shallow Resistivity	50
0	Deep Resistivity	50

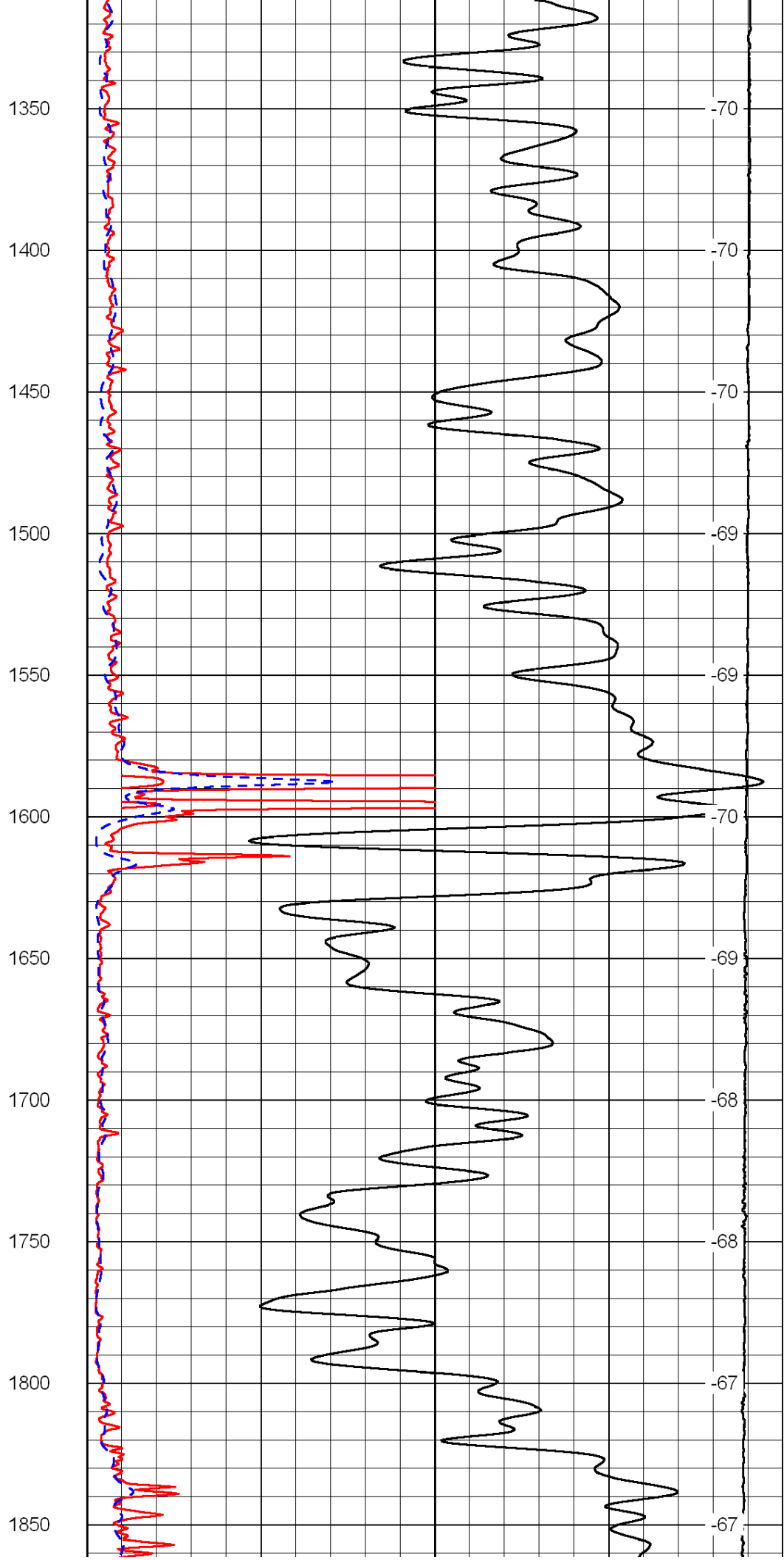
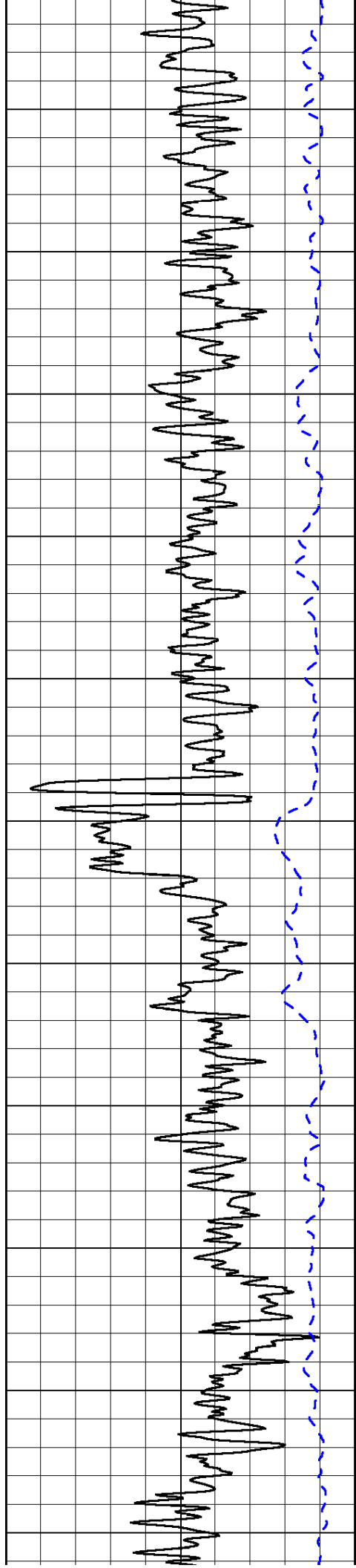
LSPD

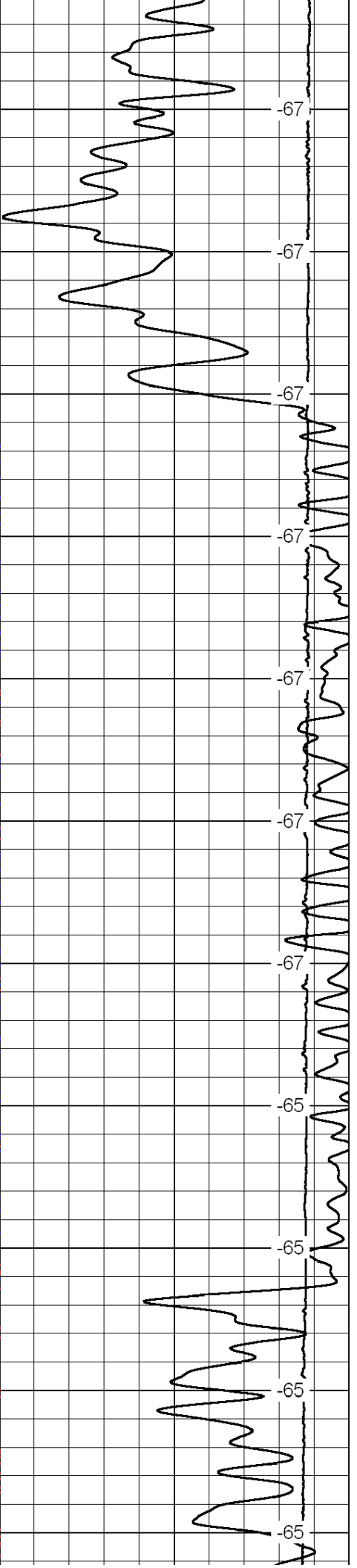
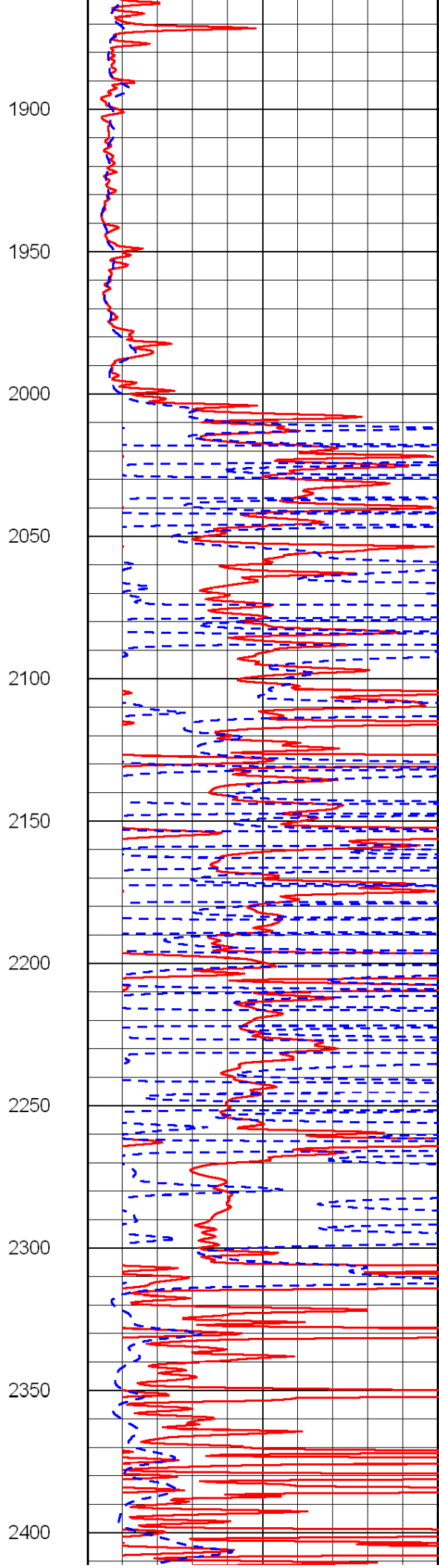
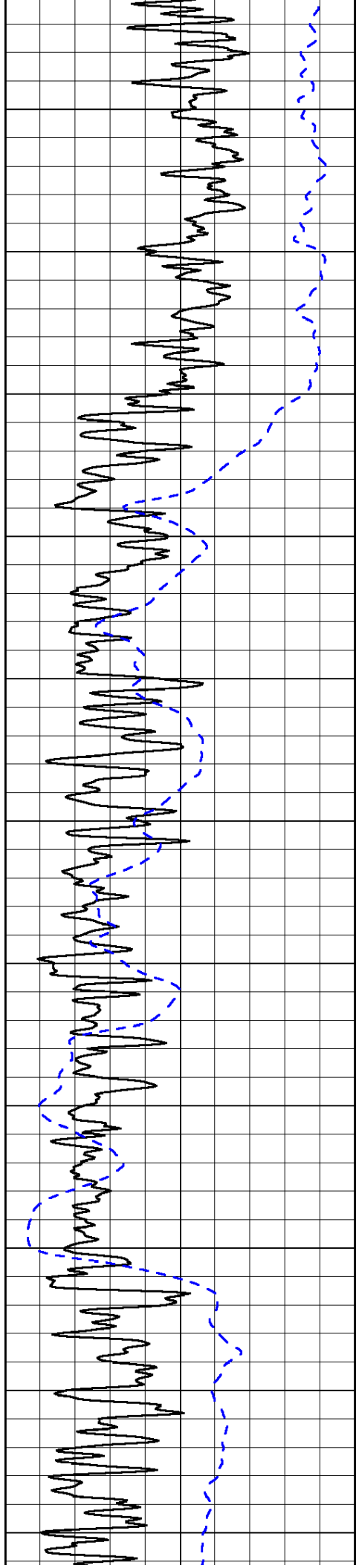
1000	Conductivity	0
15000	Line Tension	0

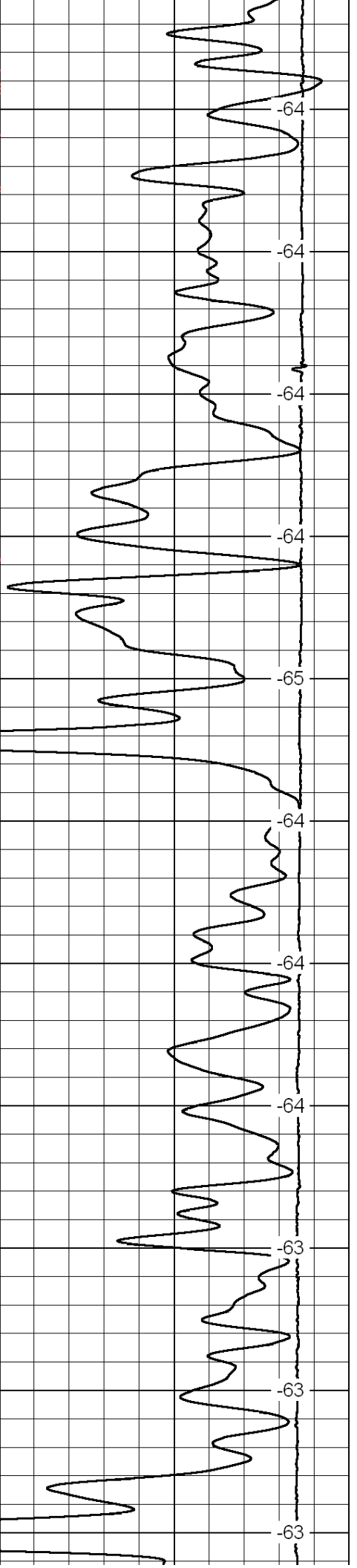
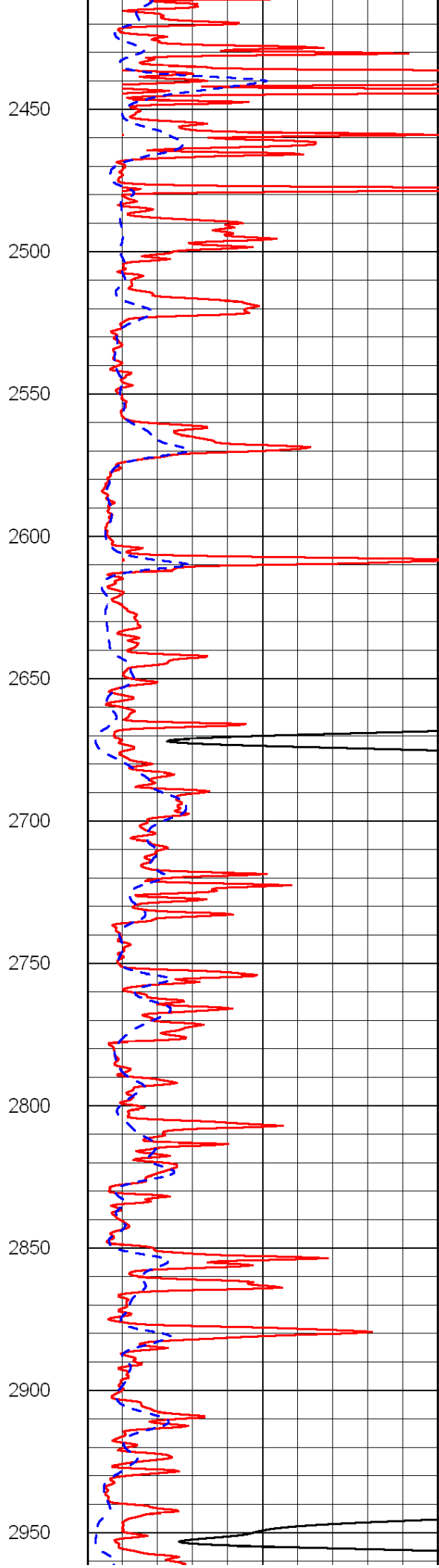
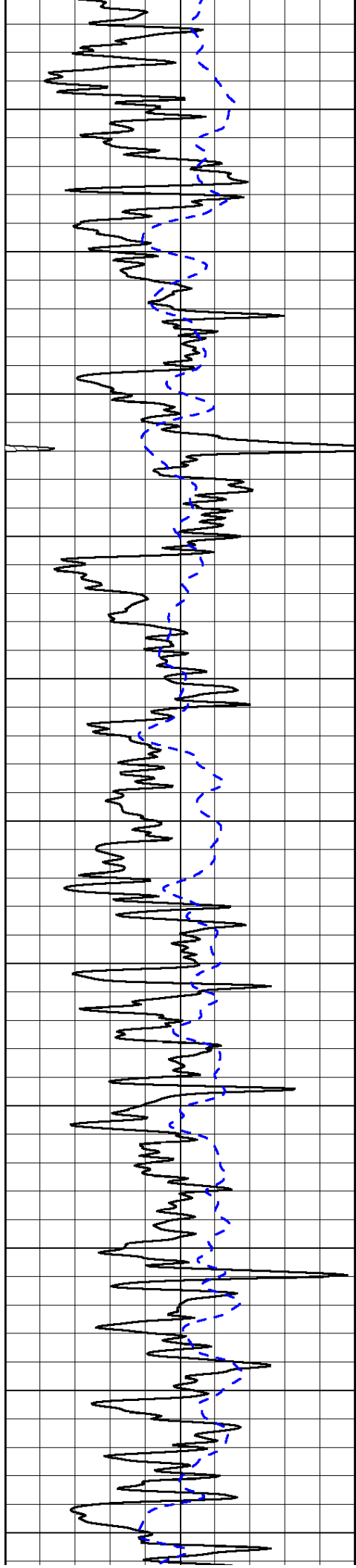
50	Shallow Resistivity	500
50	Deep Resistivity	500

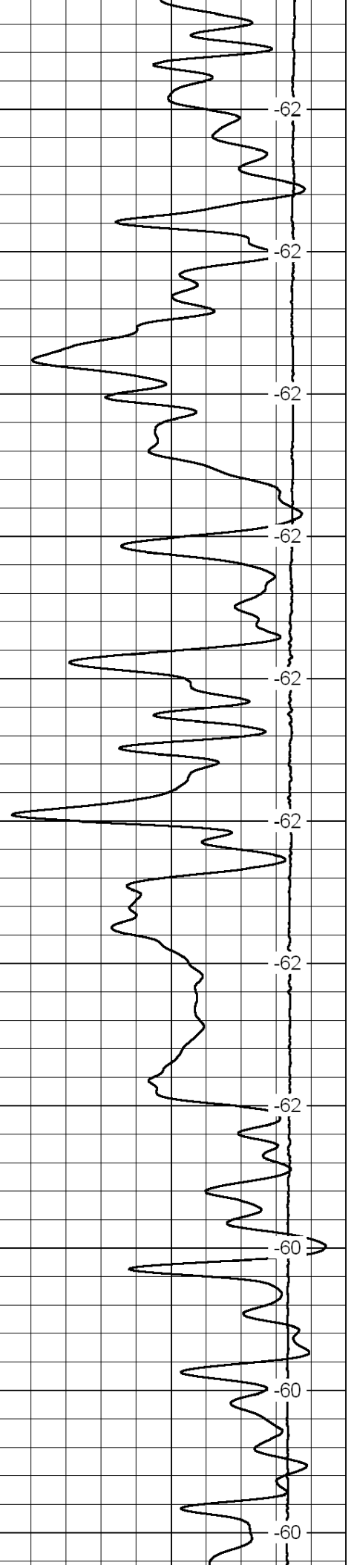
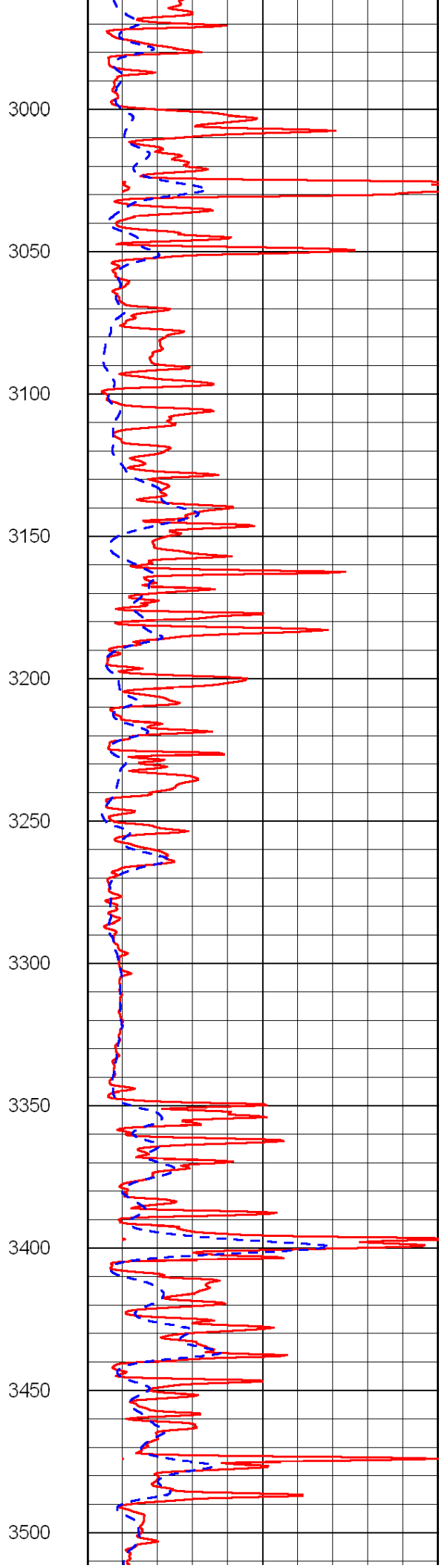
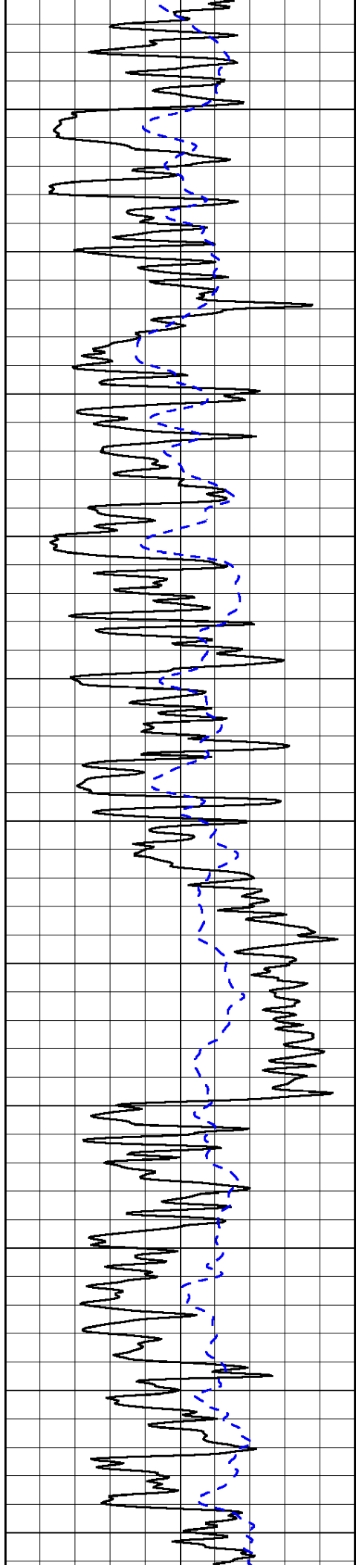


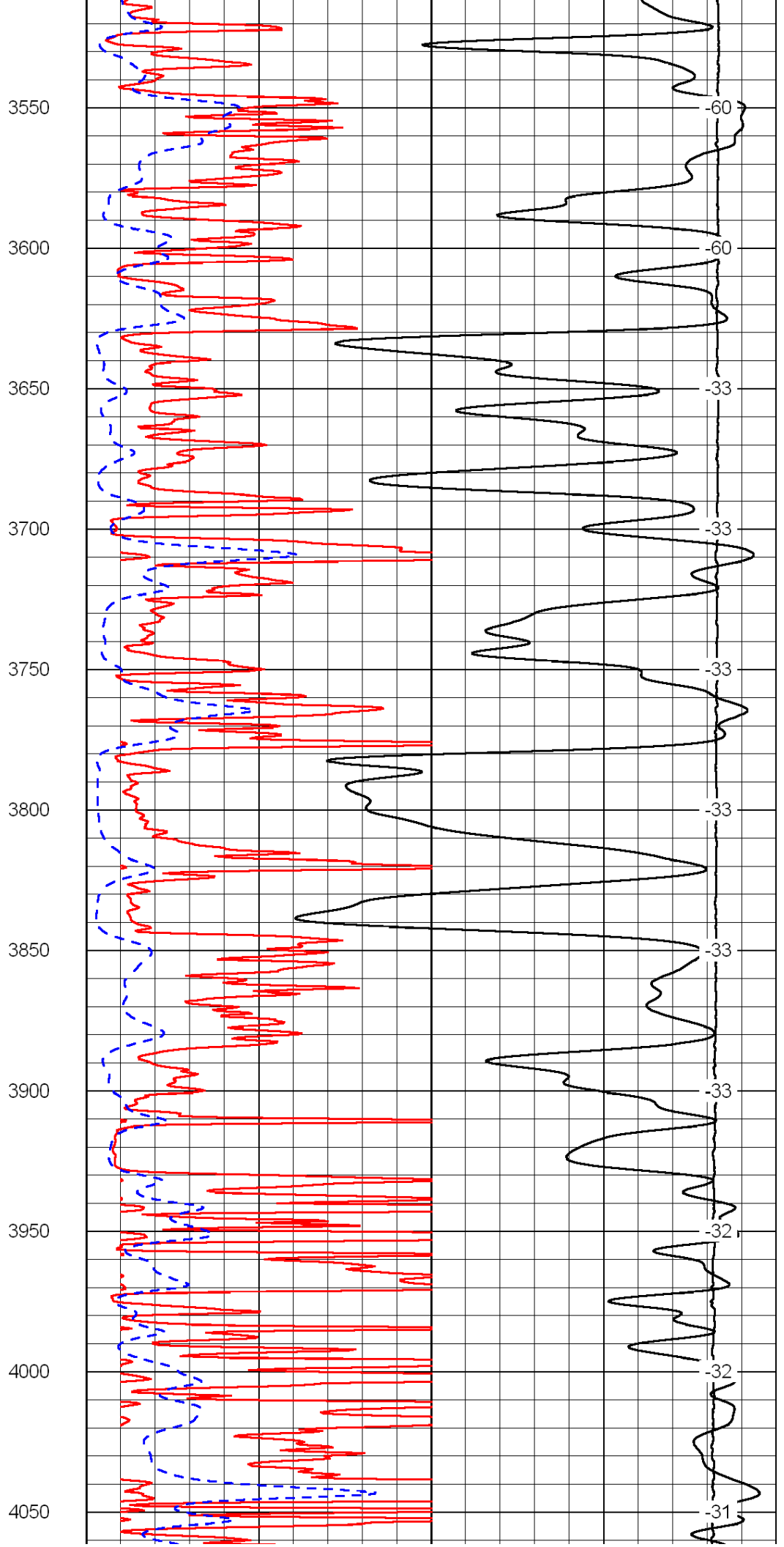
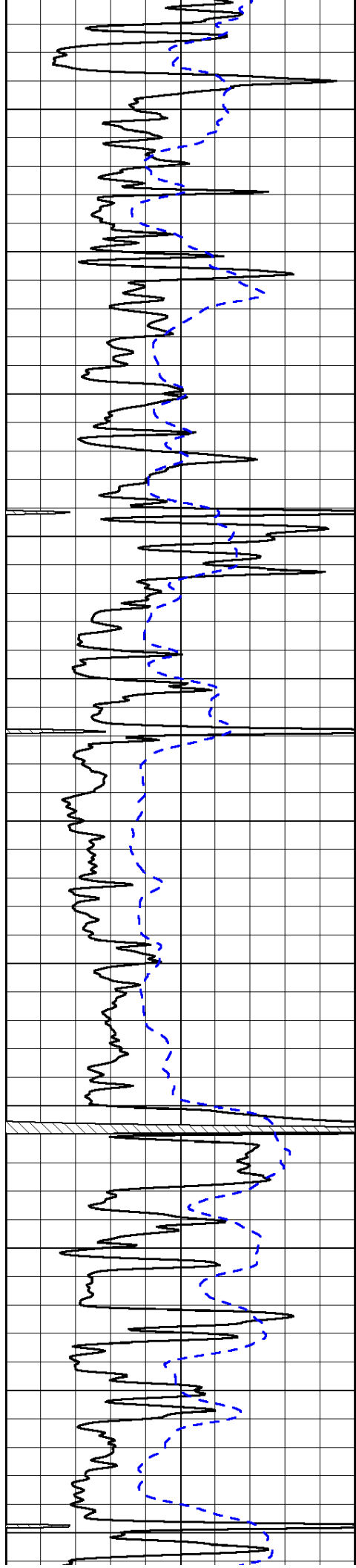


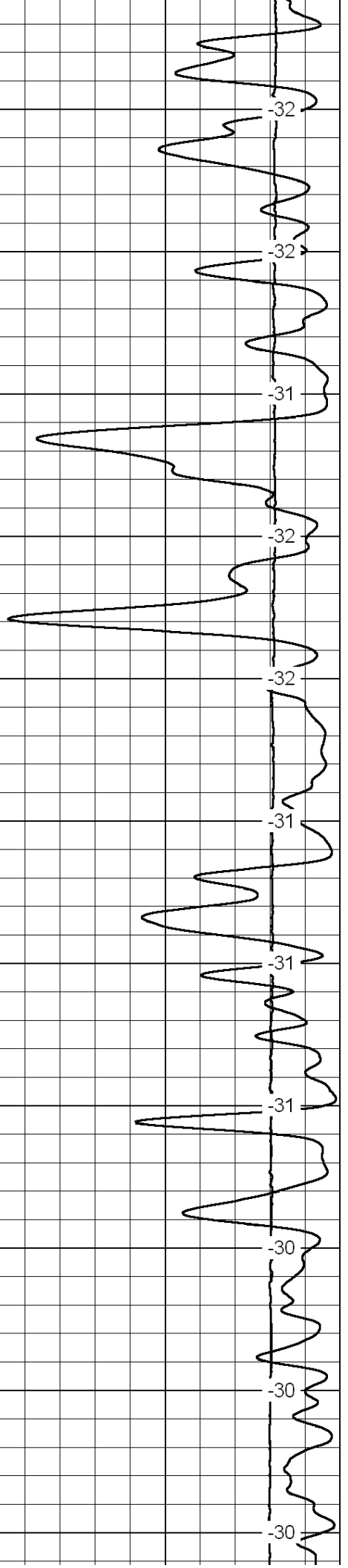
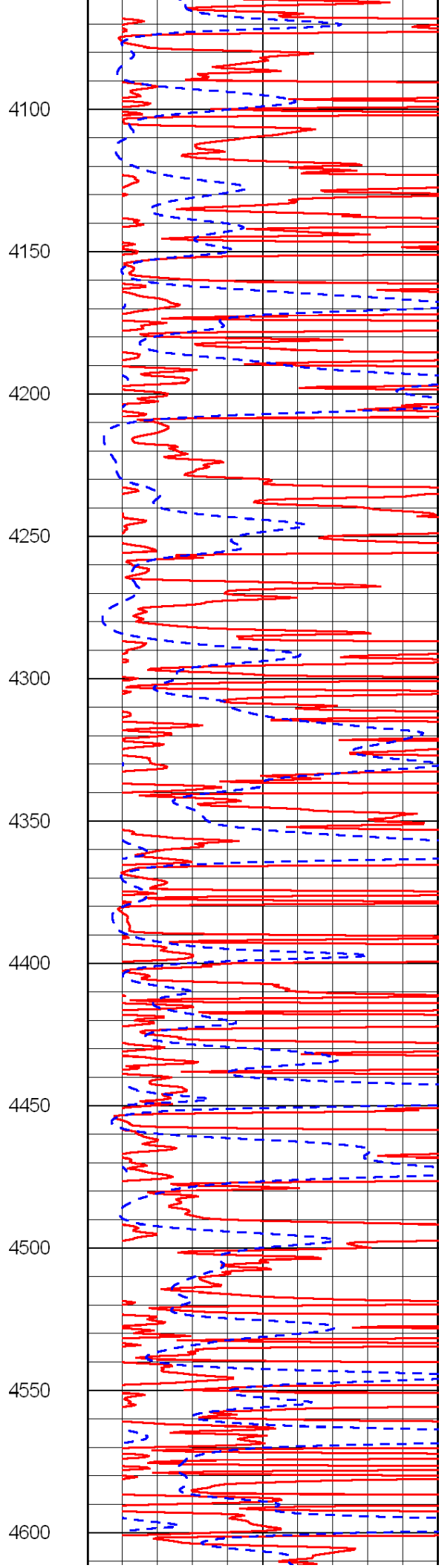
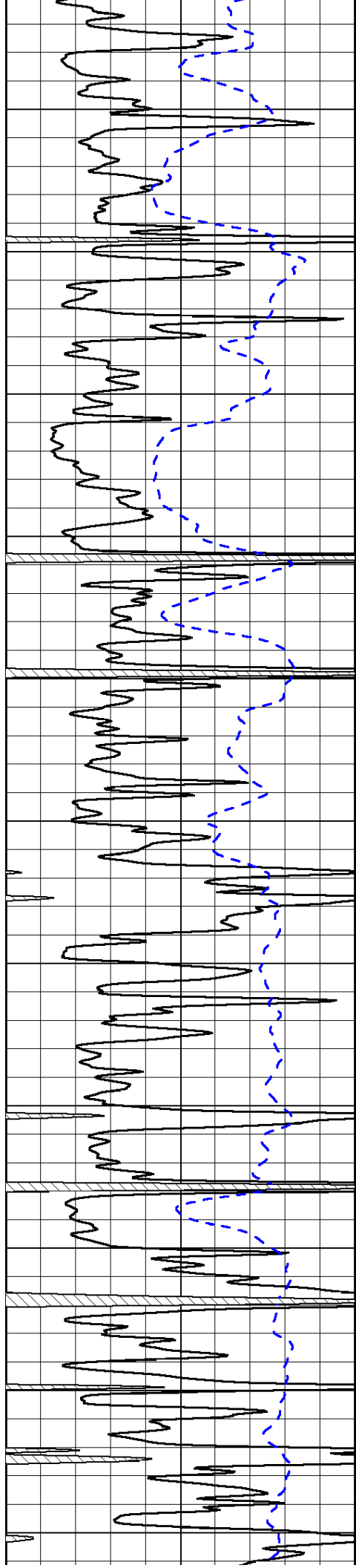


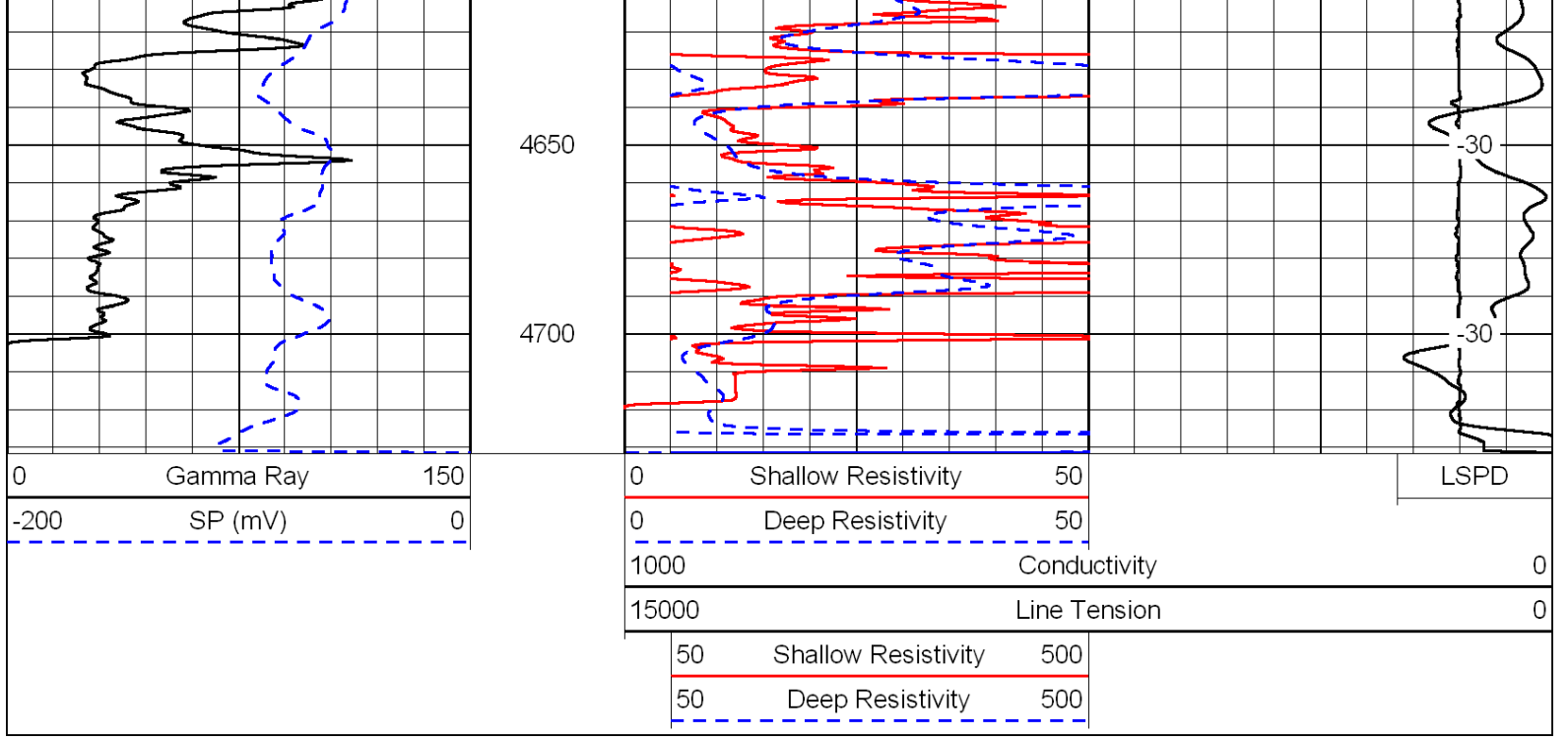




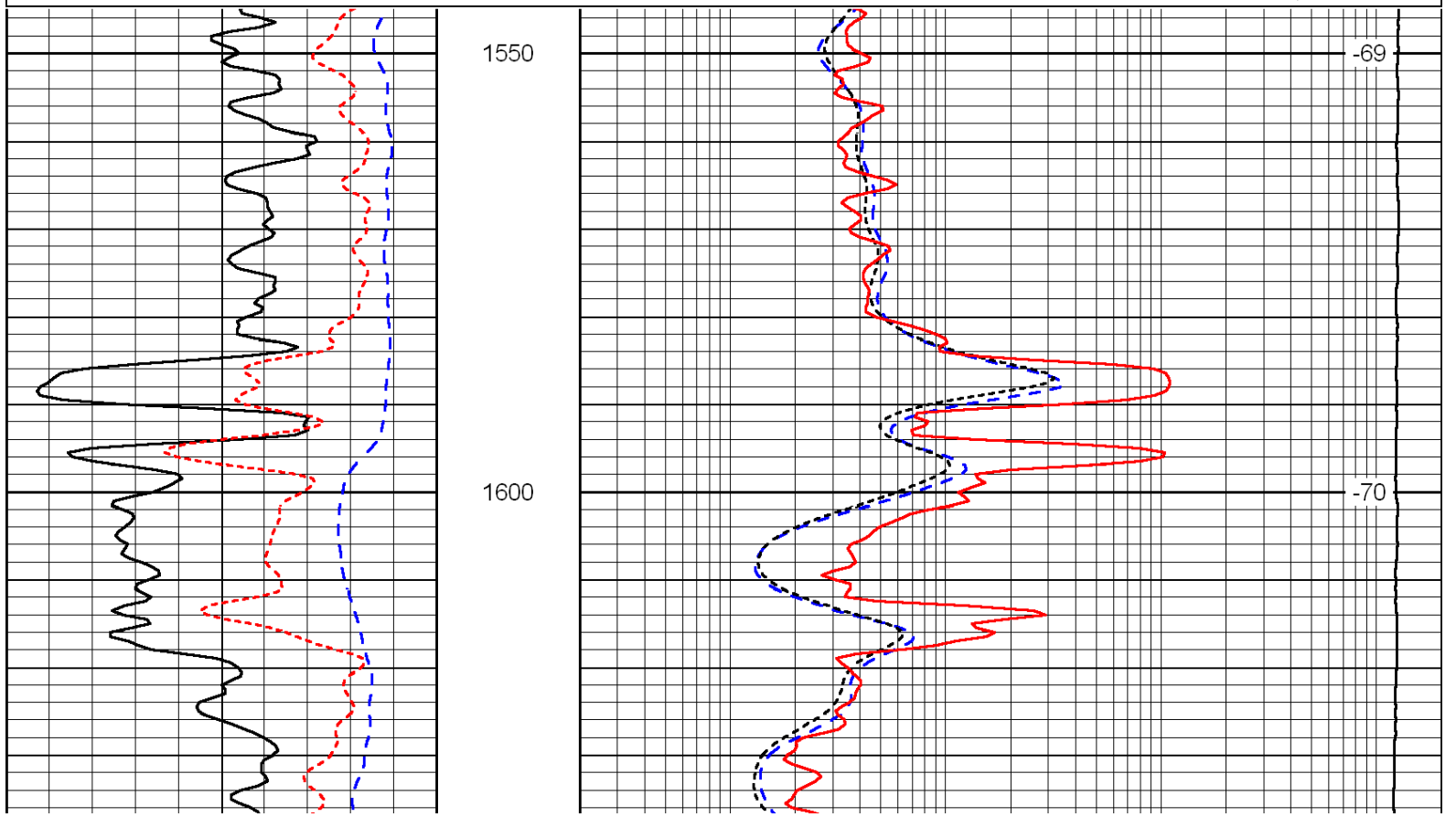
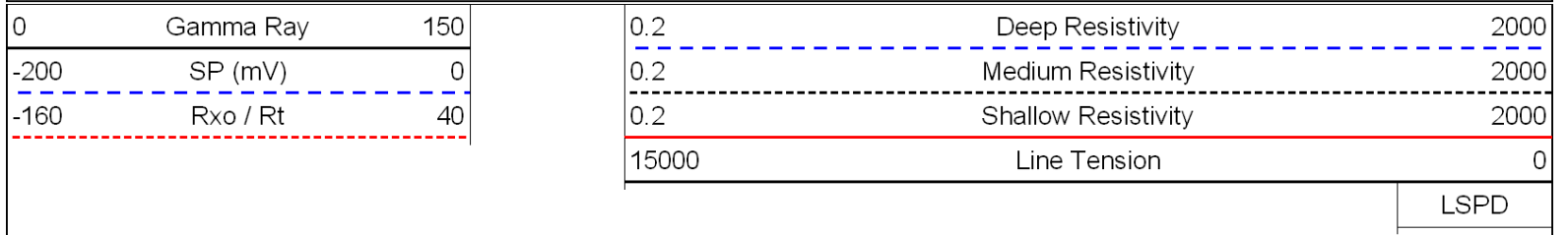


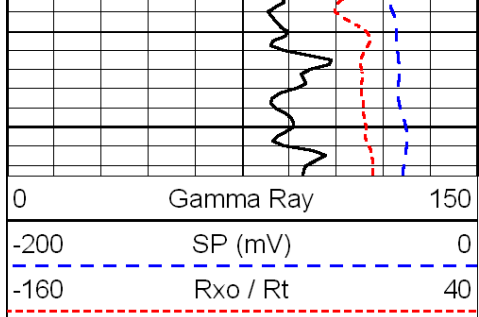




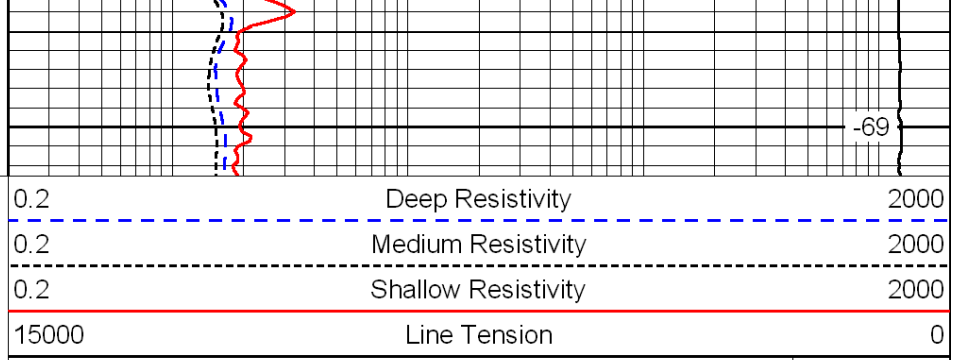


Database File: c:\warrior\data\amwar\_king no. 1-4\amwarriorhd.db  
 Dataset Pathname: dil/amwrstck  
 Presentation Format: dil  
 Dataset Creation: Sat Jun 19 00:34:46 2010  
 Charted by: Depth in Feet scaled 1:240





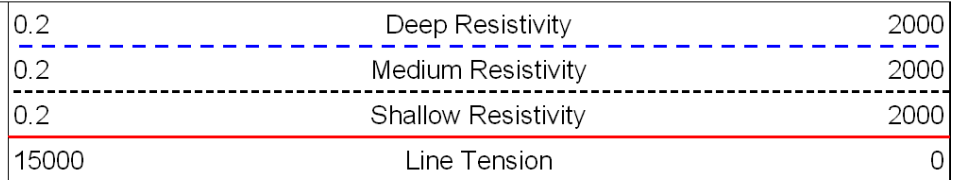
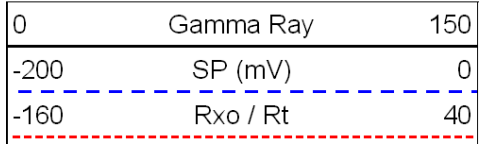
1650



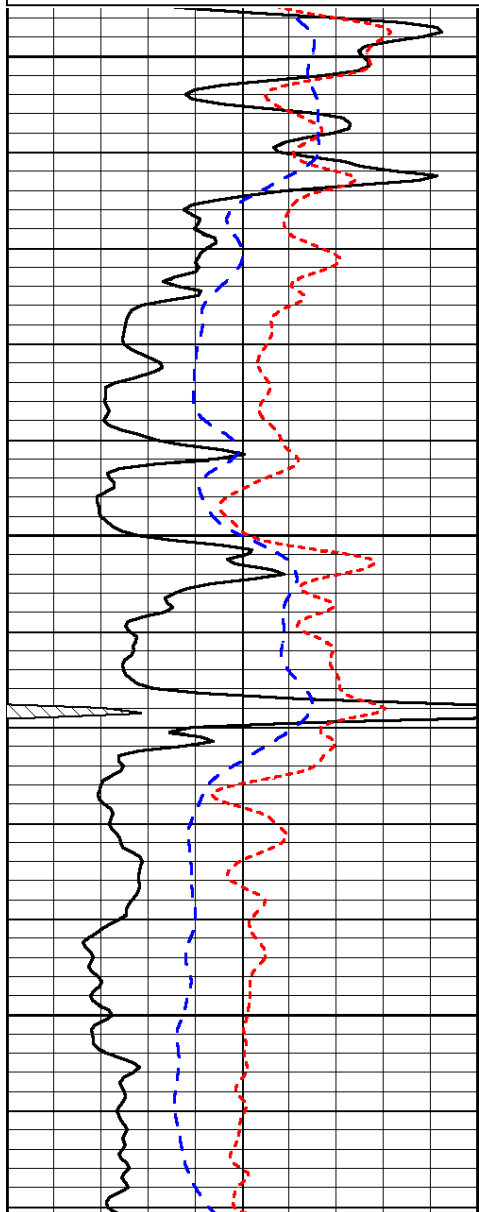
-69

LSPD

Database File: c:\warrior\data\amwar\_king no. 1-4\amwarriorhd.db  
 Dataset Pathname: dil/amwrstck  
 Presentation Format: dil  
 Dataset Creation: Sat Jun 19 00:34:46 2010  
 Charted by: Depth in Feet scaled 1:240



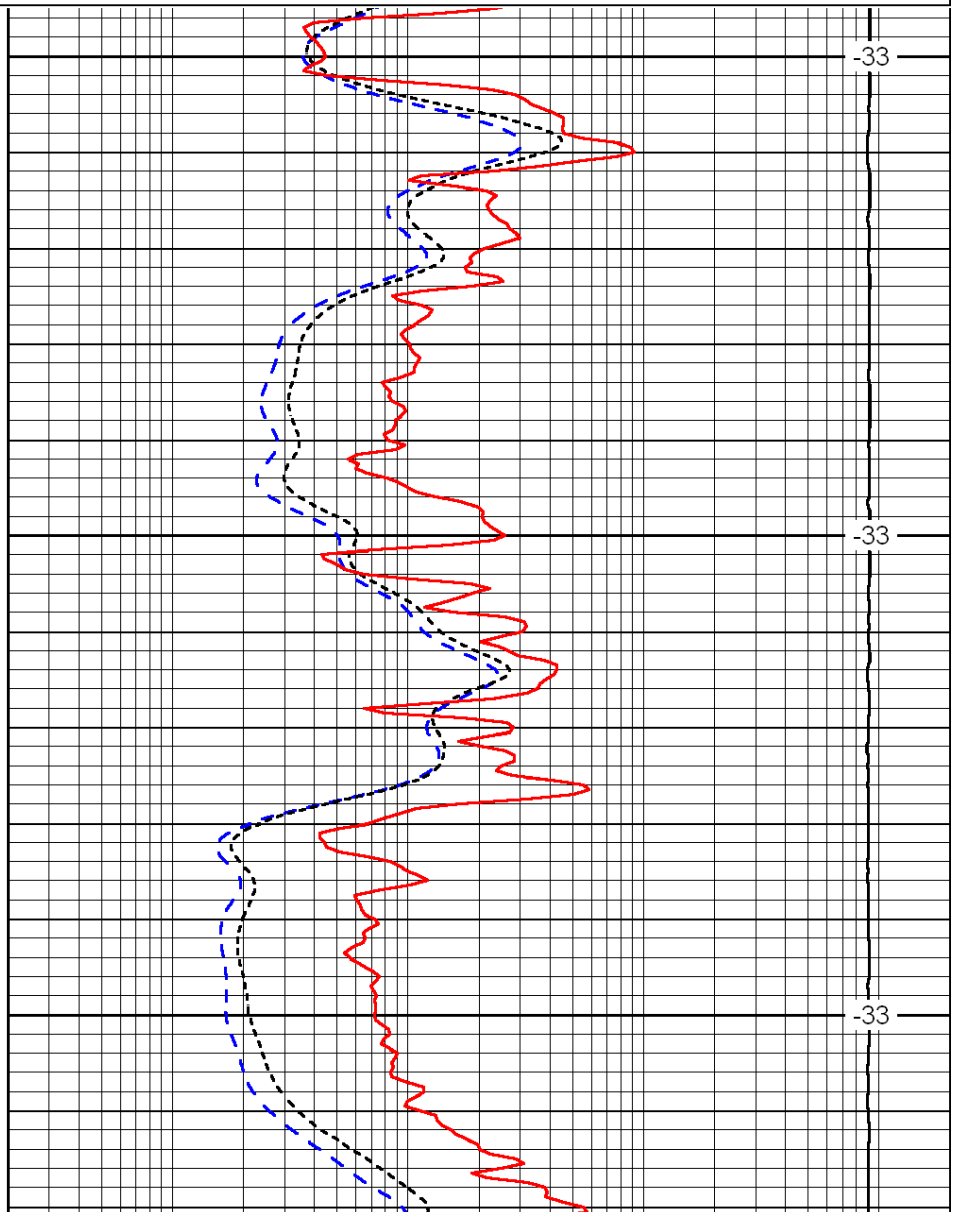
LSPD



3700

3750

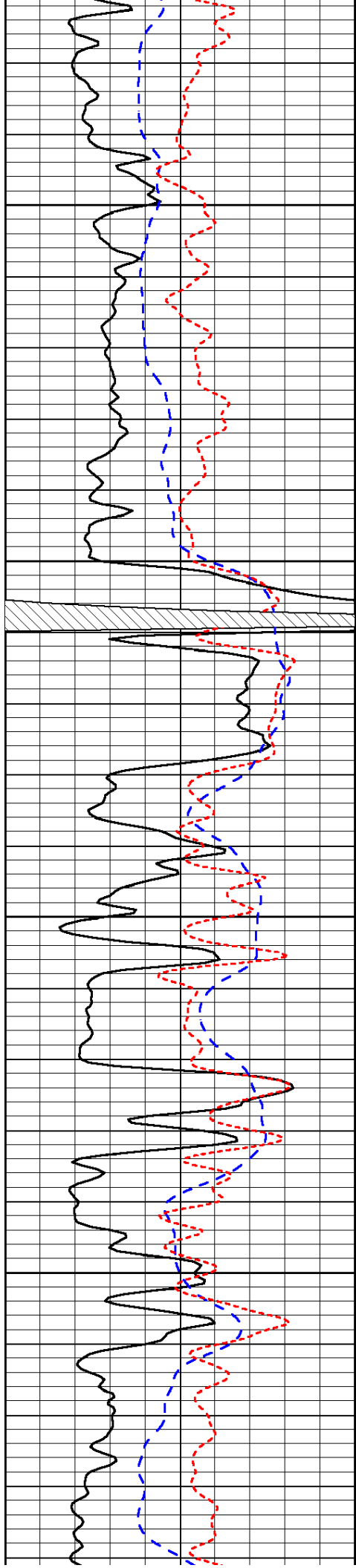
3800



-33

-33

-33

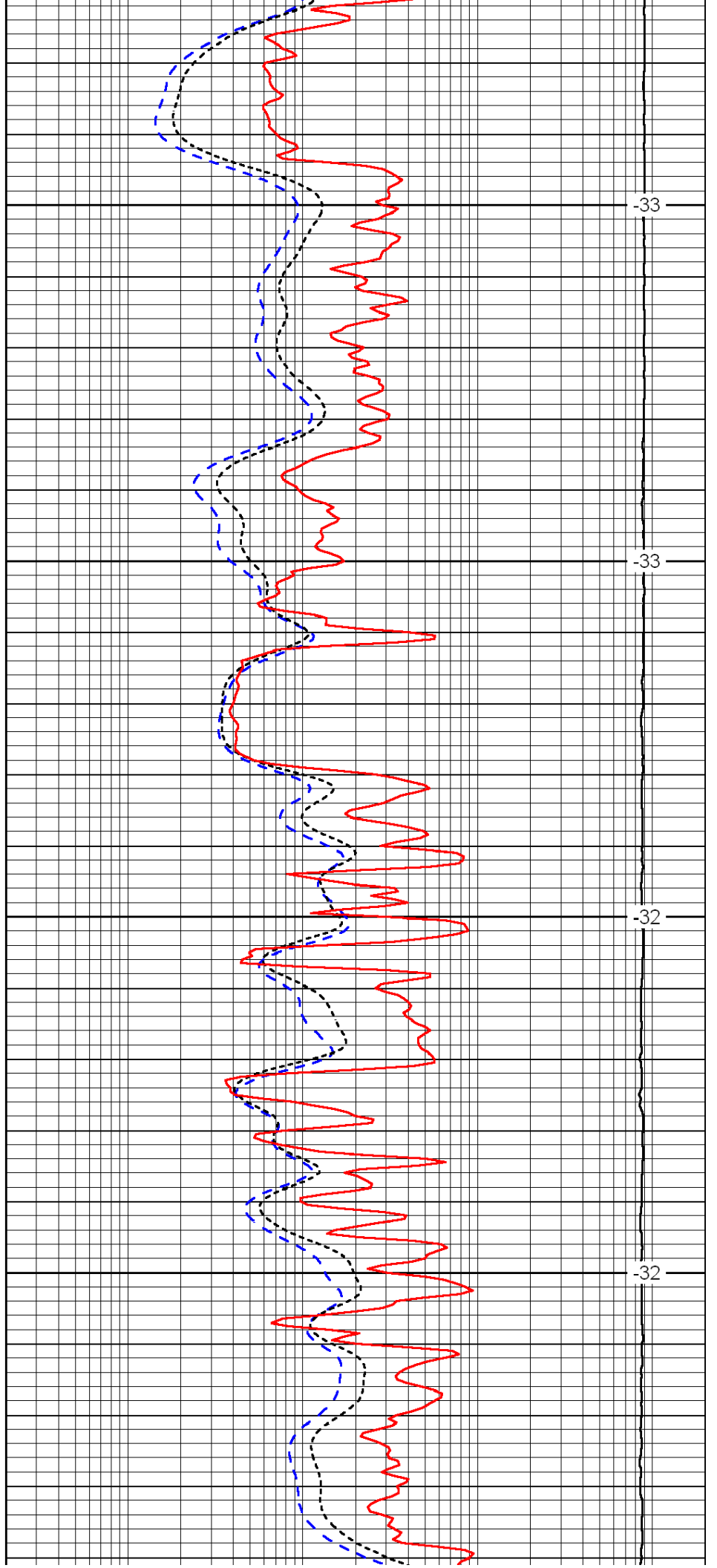


3850

3900

3950

4000

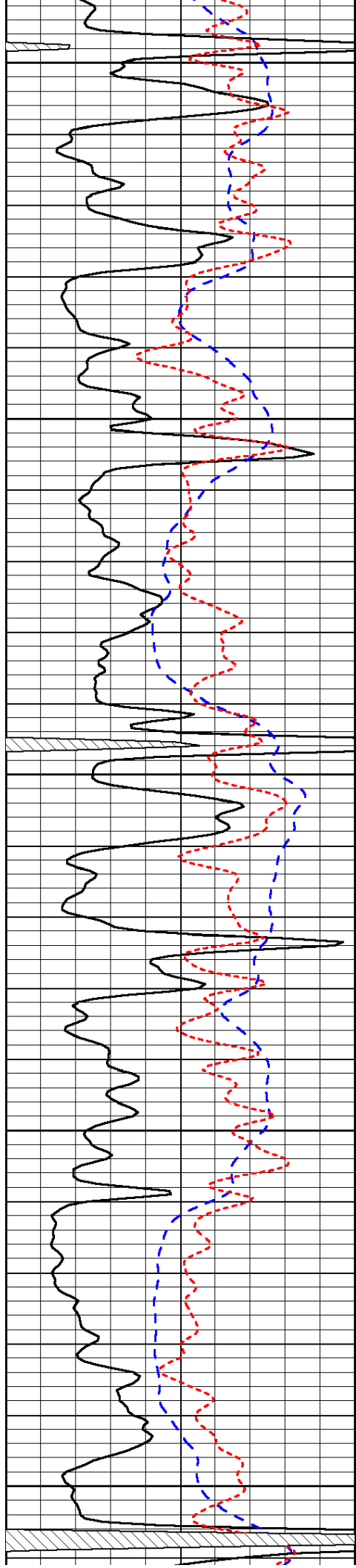


-33

-33

-32

-32



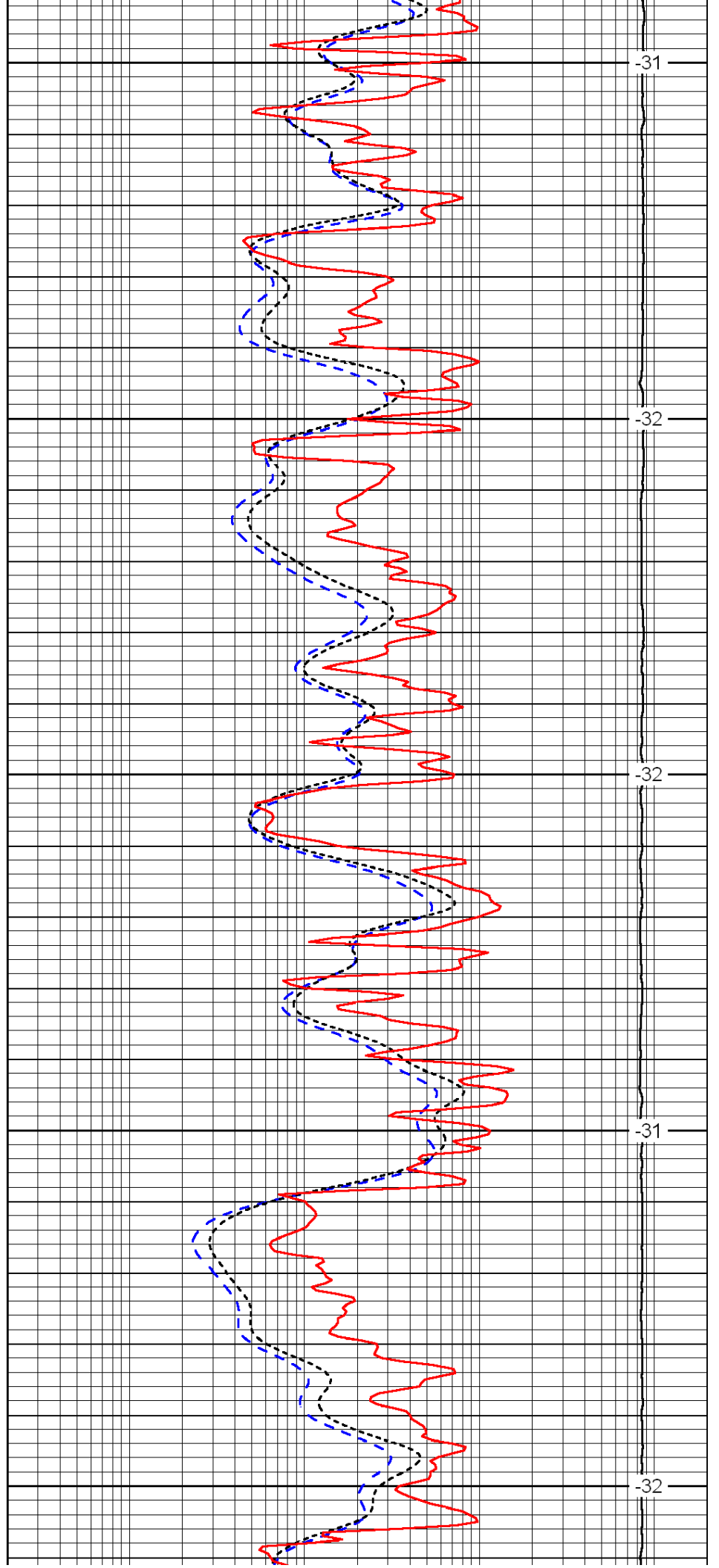
4050

4100

4150

4200

4250



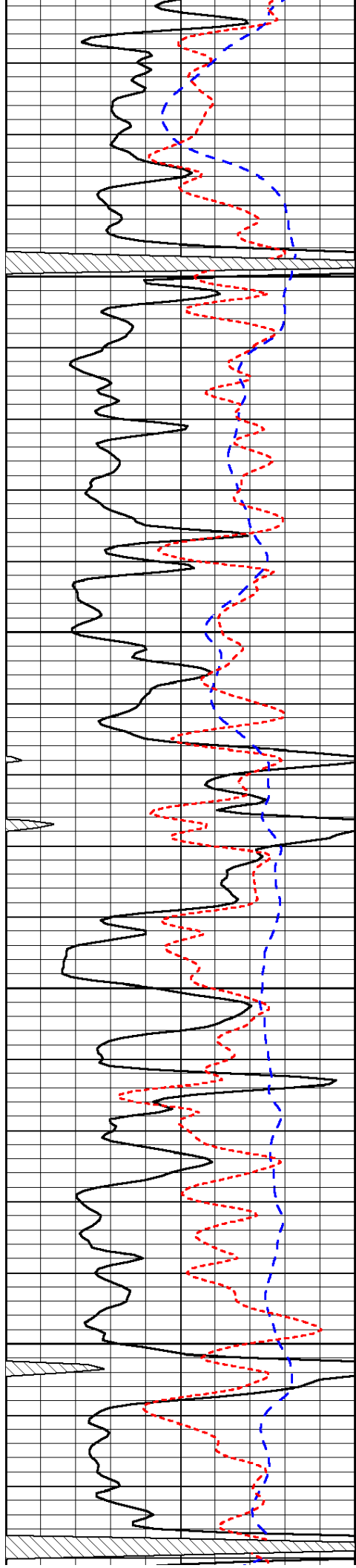
-31

-32

-32

-31

-32

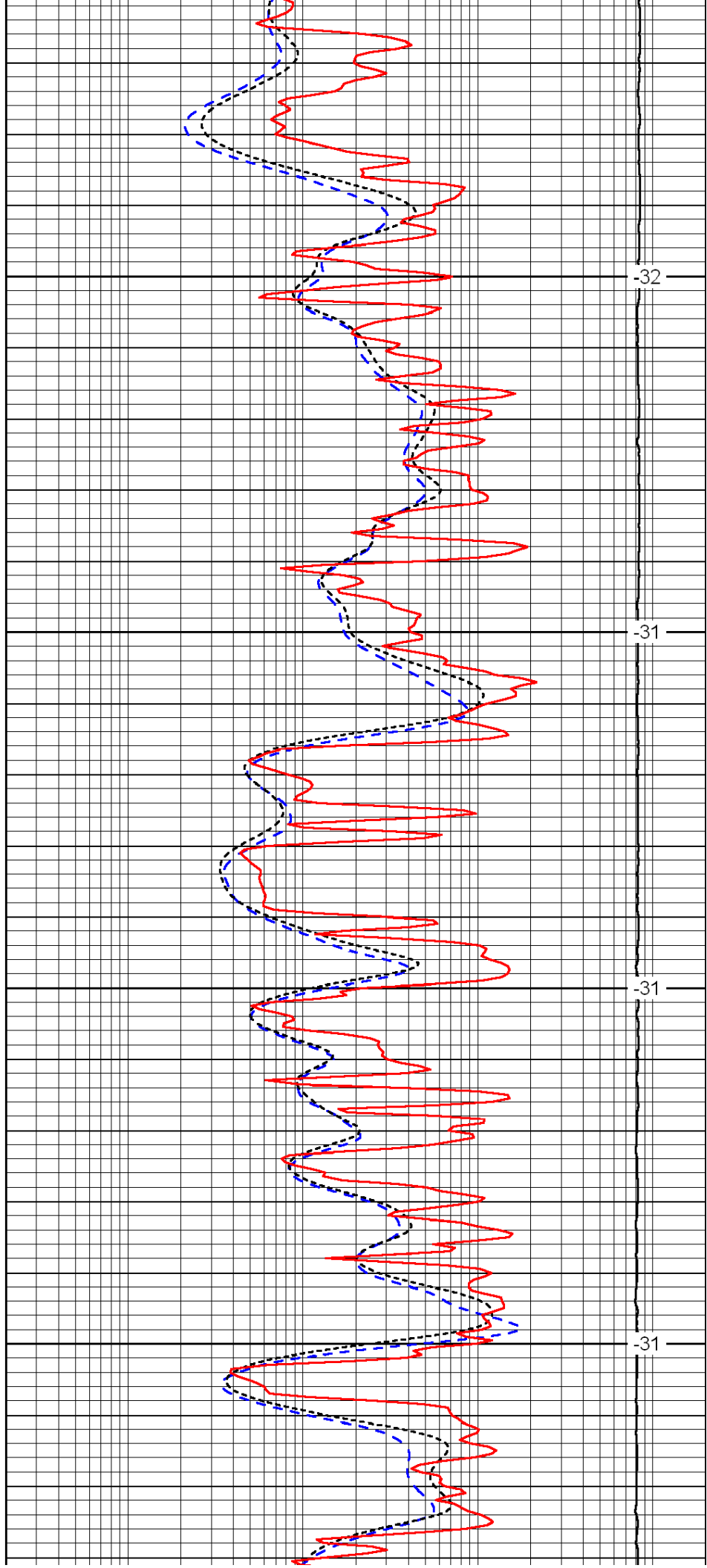


4300

4350

4400

4450

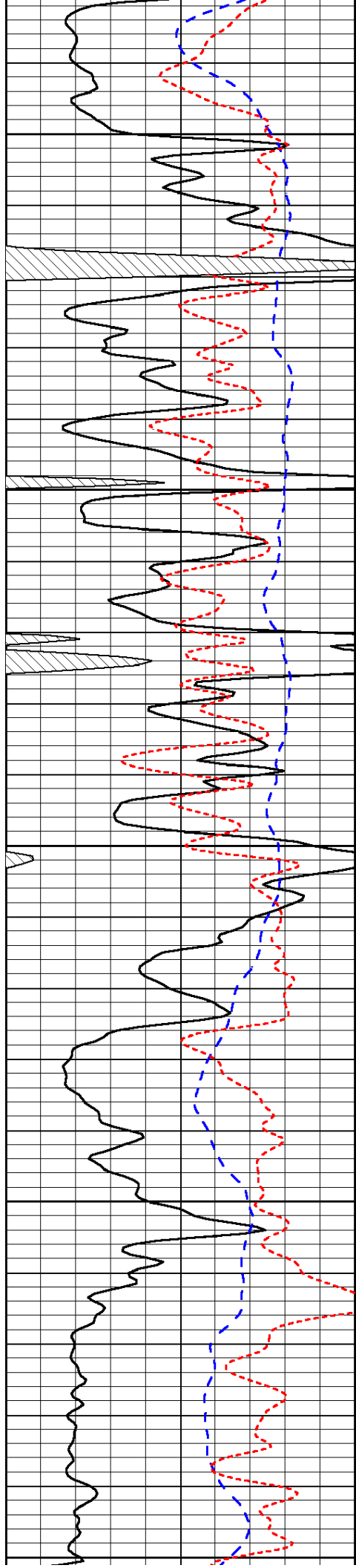


-32

-31

-31

-31



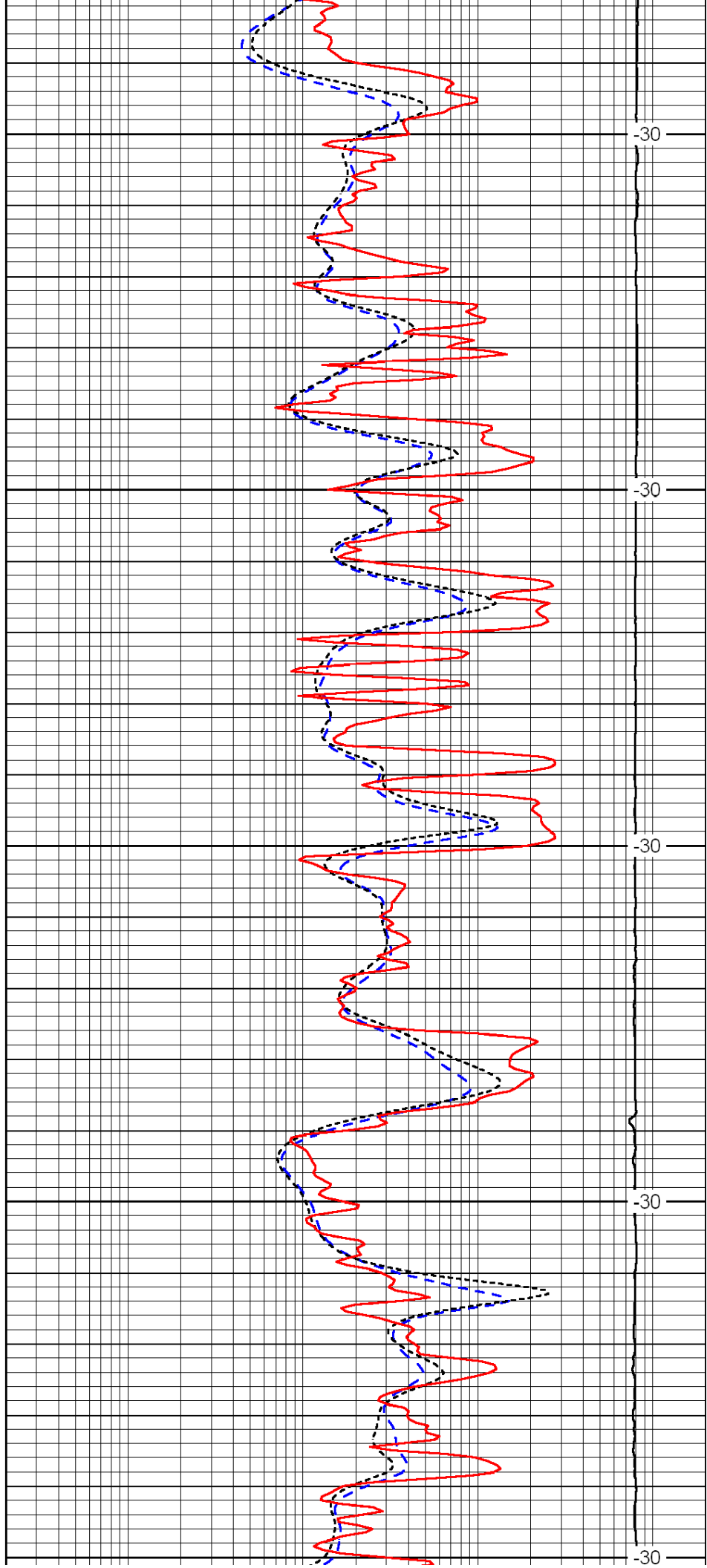
4500

4550

4600

4650

4700



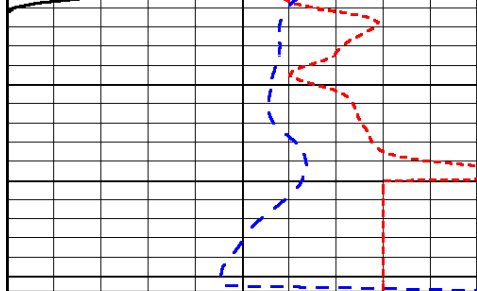
-30

-30

-30

-30

-30



0	Gamma Ray	150
-200	SP (mV)	0
-160	Rxo / Rt	40



0.2	Deep Resistivity	2000
0.2	Medium Resistivity	2000
0.2	Shallow Resistivity	2000
15000	Line Tension	0

LSPD