



# Microresistivity Log

**DIGITAL LOG** (785) 625-3858

API No.	15-083-21,649-00-00		
Company	American Warrior, Inc.		
Well	King No. 1-4		
Field	Wildcat		
County	Hodgeman	State	Kansas
Location	1,394' FNL & 924' FEL		
Sec: 4	Twp: 23S	Rge: 24W	
Permanent Datum	Ground Level	Elevation	2363
Log Measured From	Kelly Bushing	8	Ft. Above Perm. Datum
Drilling Measured From	Kelly Bushing		
		Other Services	CNL/CDL DIL/BHCS
		Elevation	K.B. 2371 D.F. 2363 G.L. 2363

Date	6/18/2010	
Run Number	Two	
Depth Driller	4725	
Depth Logger	4726	
Bottom Logged Interval	4725	
Top Log Interval	3700	
Casing Driller	8.625 @ 306	
Casing Logger	300	
Bit Size	7.875	
Type Fluid in Hole	Chemical	
Salinity, ppm CL	4200	
Density / Viscosity	9.3	51
pH / Fluid Loss	8.0	11.2
Source of Sample	Flowline	
Rm @ Meas. Temp	.90	@ 74
Rmf @ Meas. Temp	.68	@ 74
Rmc @ Meas. Temp	.122	@ 74
Source of Rmf / Rmc	Charts	
Rm @ BHT	.56	@ 125
Operating Rig Time	4 1/2 Hours	
Max Rec. Temp. F	125	
Equipment Number	10	
Location	Hays	
Recorded By	J. Long	
Witnessed By	Gil Linenberger	

<<< Fold Here >>>

All interpretations are opinions based on inferences from electrical or other measurements and we cannot and do not guarantee the accuracy or correctness of any interpretation, and we shall not, except in the case of gross or willful negligence on our part, be liable or responsible for any loss, costs, damages, or expenses incurred or sustained by anyone resulting from any interpretation made by any of our officers, agents or employees. These interpretations are also subject to our general terms and conditions set out in our current Price Schedule.

### Comments

Thank you for using Log-Tech, Inc.  
(785) 625-3858

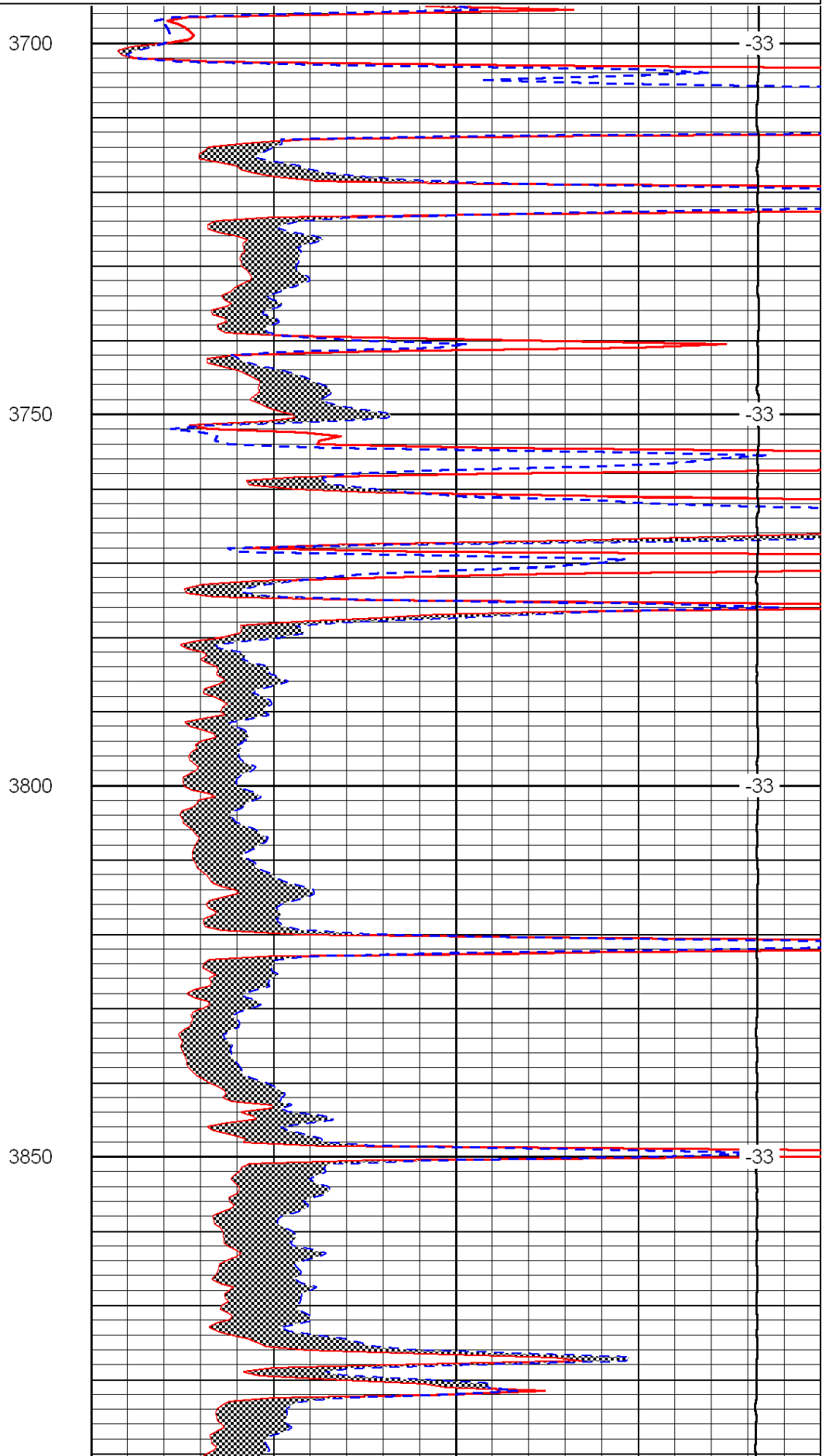
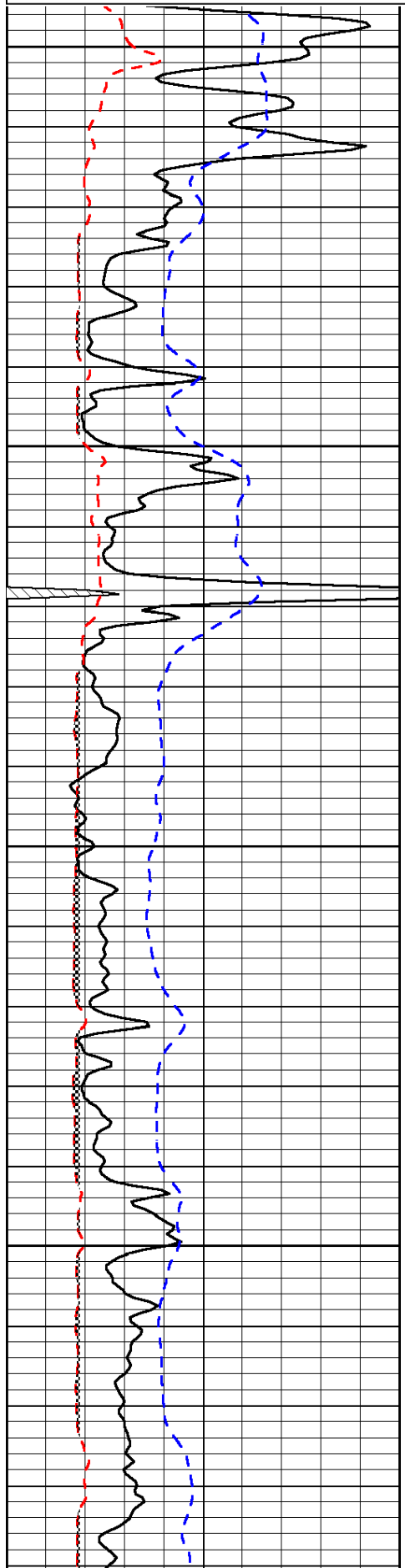
Jetmore, 3 West, 1/4 South, West Into

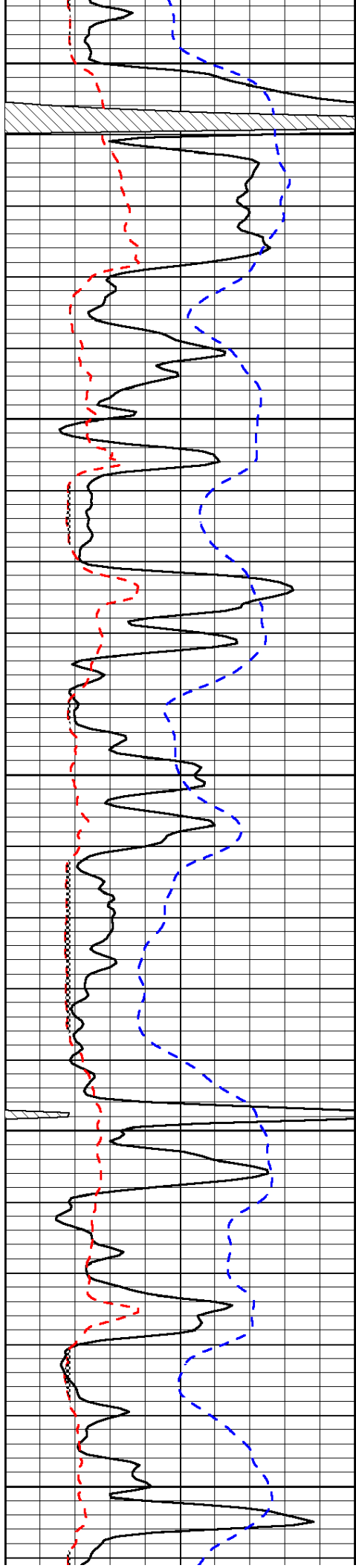
Database File: c:\warrior\data\amwar\_king no. 1-4\amwarriorhd.db  
 Dataset Pathname: dil/amwrstck  
 Presentation Format: micro  
 Dataset Creation: Sat Jun 19 00:34:46 2010  
 Charted by: Depth in Feet scaled 1:240

0	Gamma Ray	150
6	Micro Log Caliper (GAPI)	16
-200	SP (mV)	0

0	Micro Inverse 1 X 1	40
0	Micro Normal 2"	40
15000	Line Weight	0

LSPD





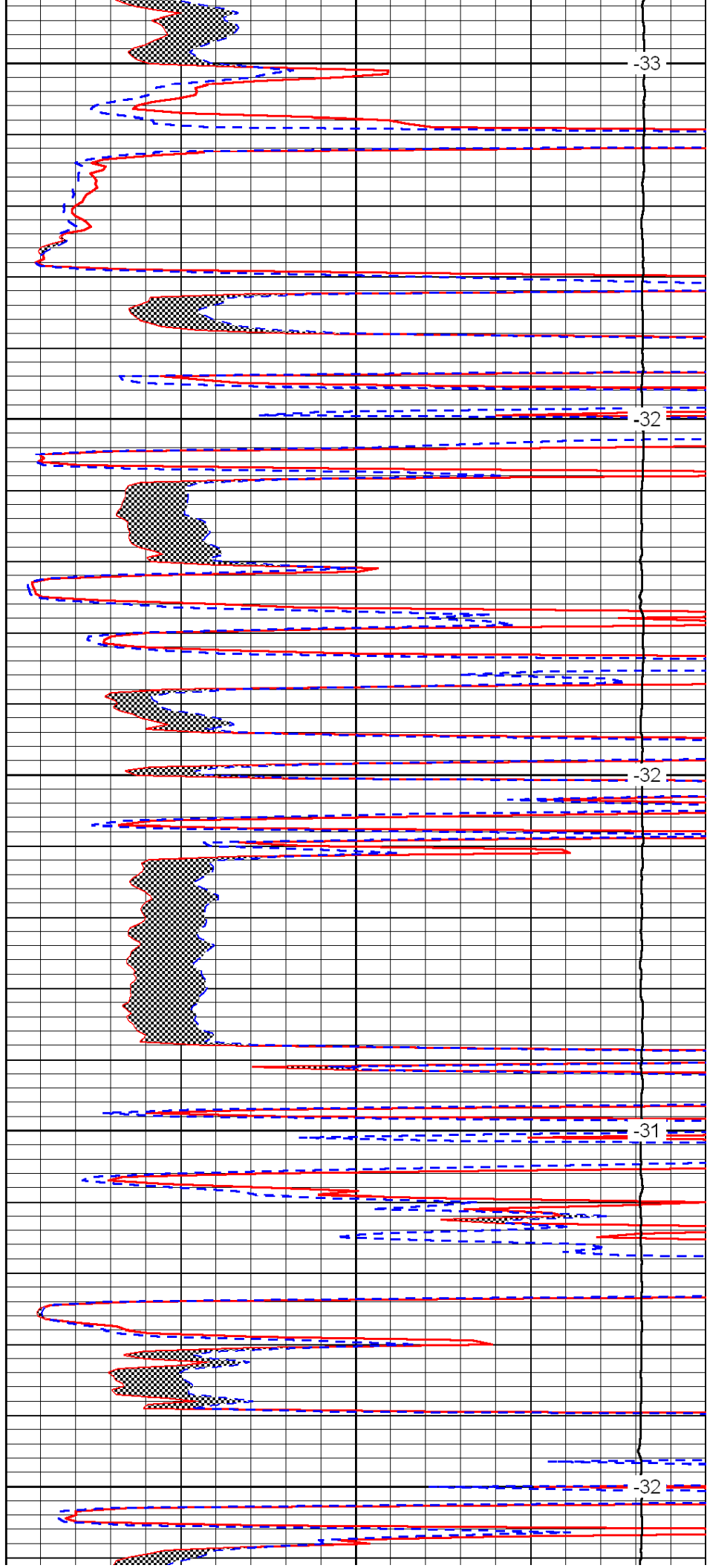
3900

3950

4000

4050

4100



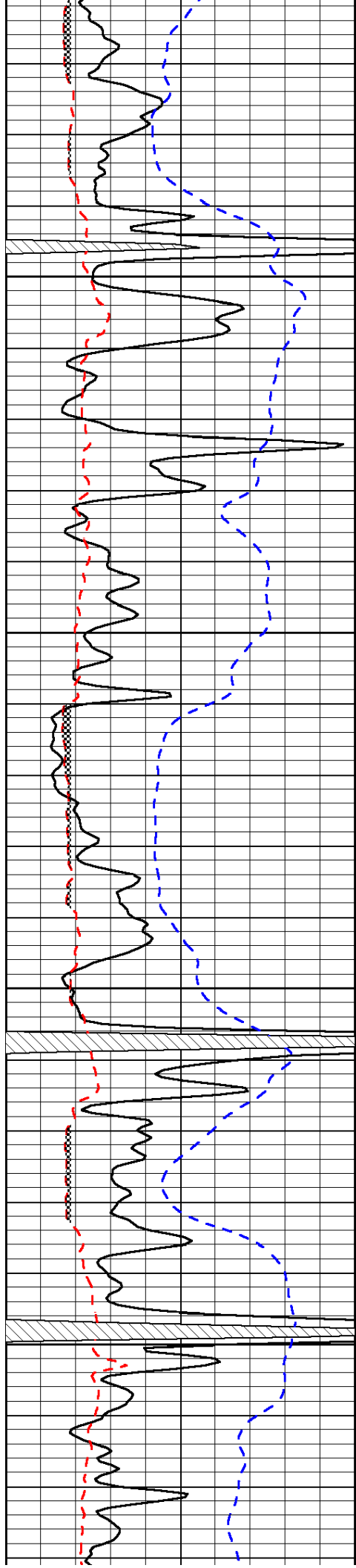
-33

-32

-32

-31

-32

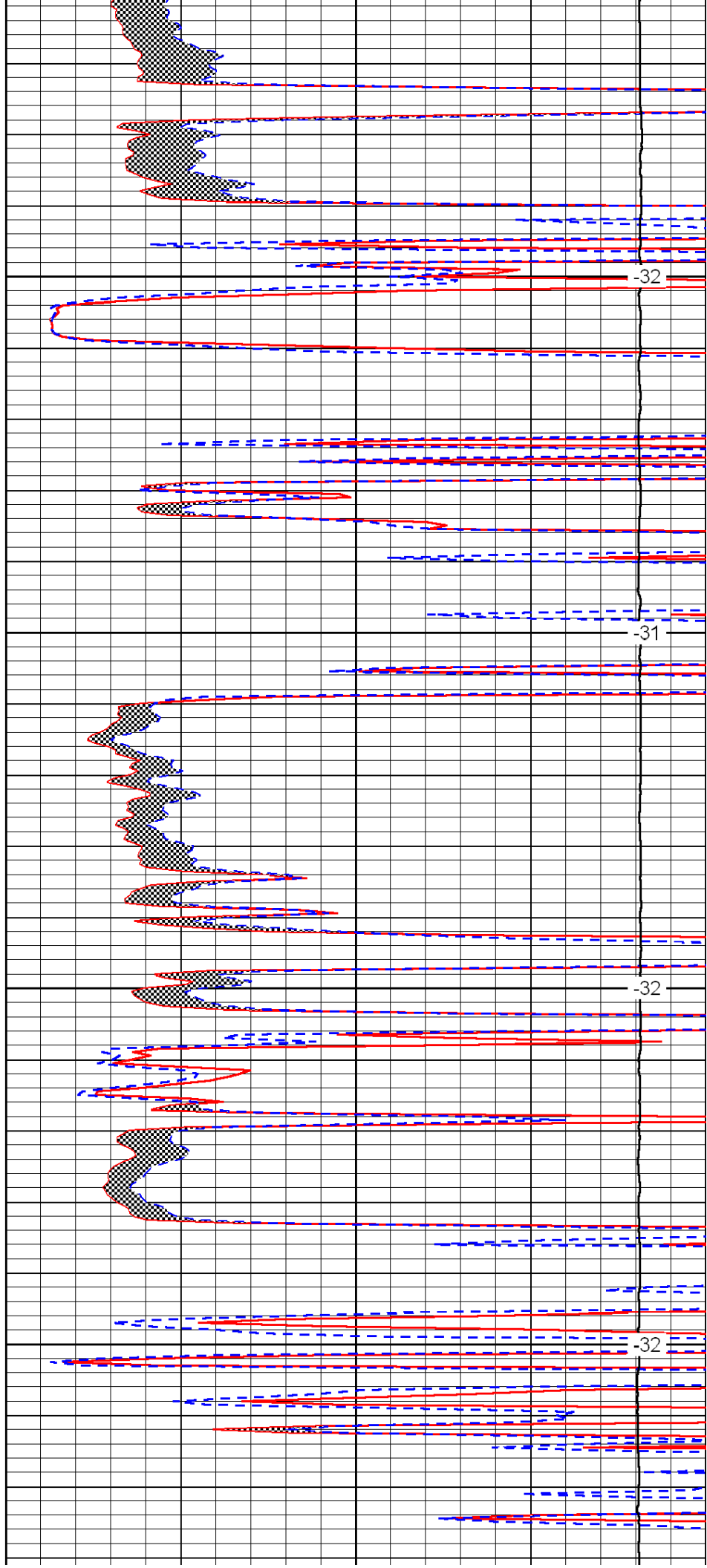


4150

4200

4250

4300

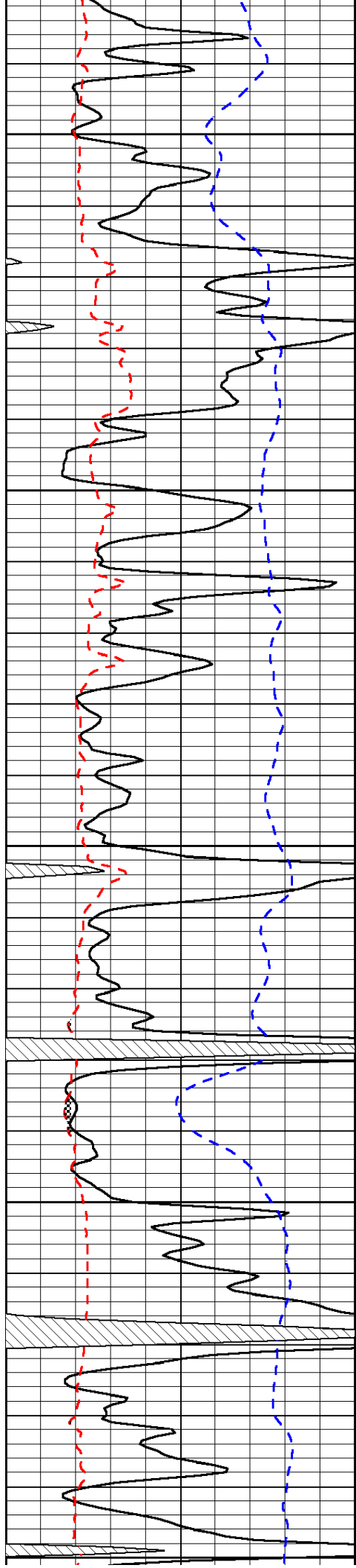


-32

-31

-32

-32



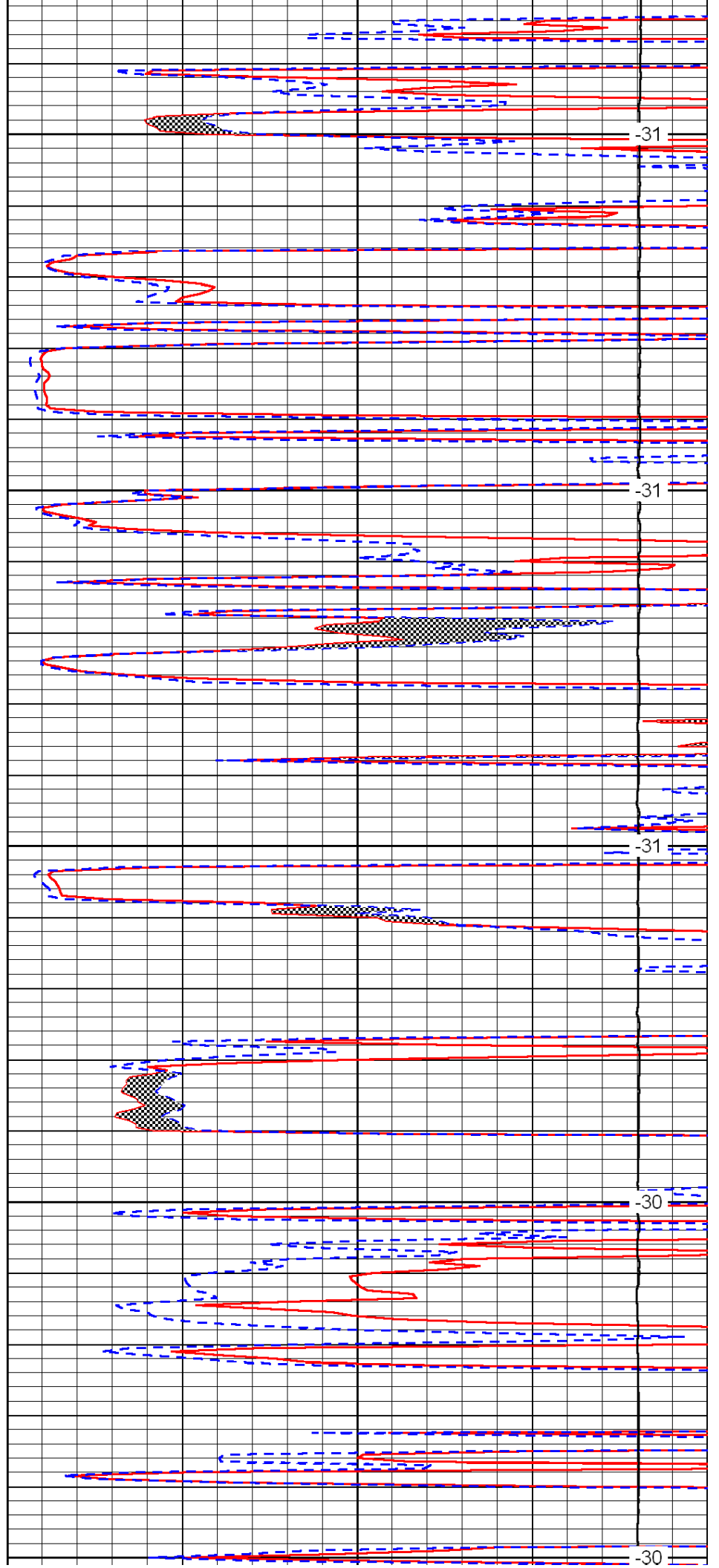
4350

4400

4450

4500

4550



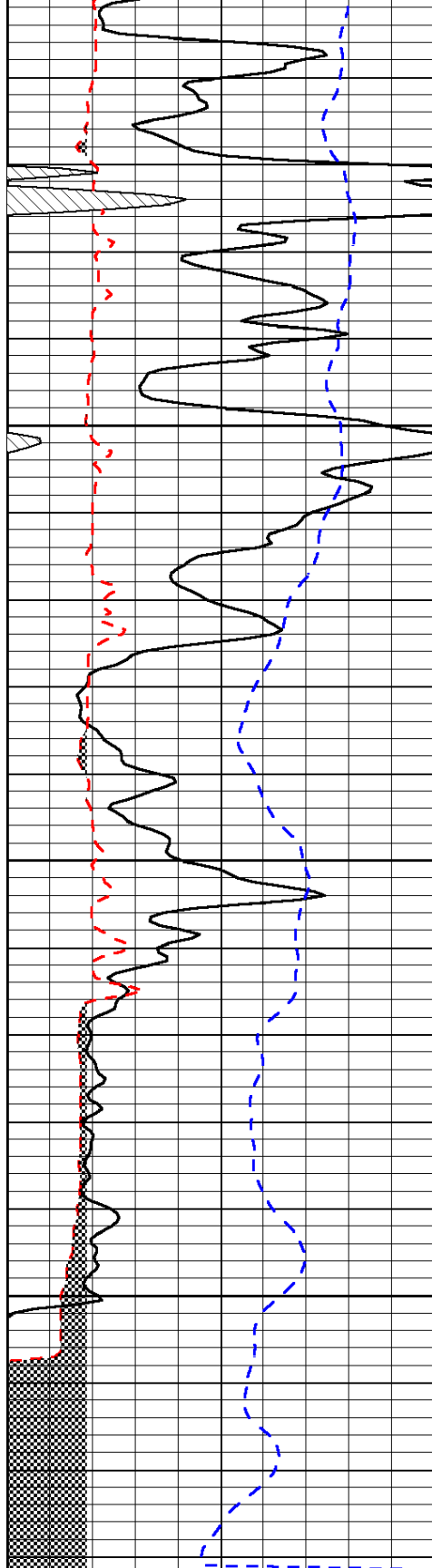
-31

-31

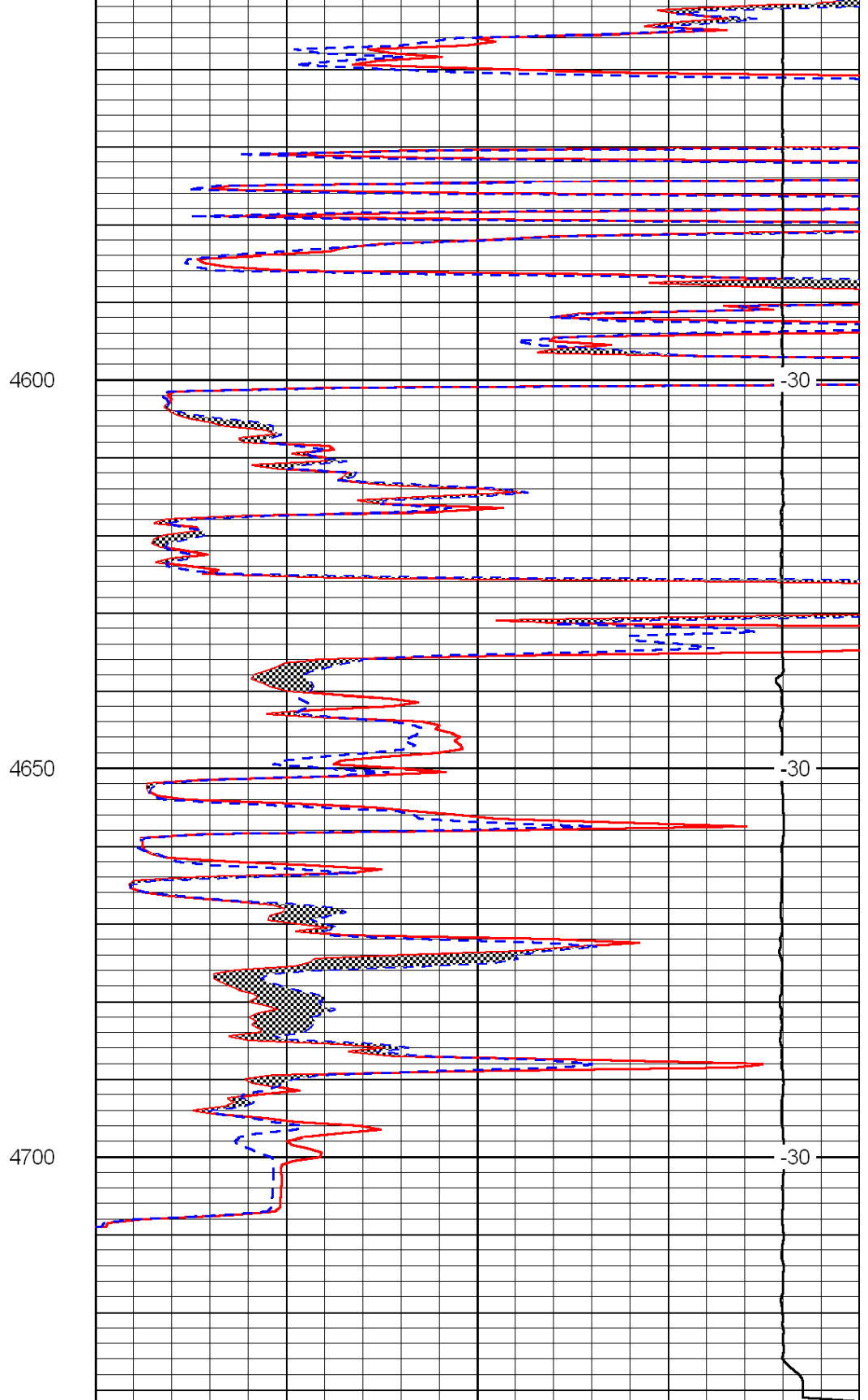
-31

-30

-30



0	Gamma Ray	150
6	Micro Log Caliper (GAPI)	16
-200	SP (mV)	0



0	Micro Inverse 1 X 1	40
0	Micro Normal 2'	40
15000	Line Weight	0

LSPD