



DIGITAL LOG (785) 625-3858

Borehole Compensated  
Sonic Log

API No. 15-083-21,649-00-00

Company American Warrior, Inc.  
Well King No. 1-4  
Field Wildcat  
County Hodgeman State Kansas

Location 1,394' FNL & 924' FEL

Sec: 4 Twp: 23S Rge: 24W

Other Services  
CNL/CDL  
MEL/DIL

Permanent Datum Ground Level Elevation 2363  
Log Measured From Kelly Bushing 8 Ft. Above Perm. Datum  
Drilling Measured From Kelly Bushing

K.B. 2371  
D.F.  
G.L. 2363

Date 6/18/2010

Run Number Two

Type Log BHC Sonic

Depth Driller 4725

Depth Logger 4726

Bottom Logged Interval 4715

Top Logged Interval 300

Type Fluid In Hole Chemical

Salinity, PPM CL 4200

Density 9.3

Level Full

Max. Rec. Temp. F 125

Operating Rig Time 4 1/2 Hours

Equipment -- Location 10 Hays

Recorded By J. Long

Witnessed By Gill Linenberger Jason Alm

Borehole Record				Casing Record			
Run No.	Bit	From	To	Size	Wgt.	From	To
1	12.25	00	306	8.625	24#	00	306
2	7.875	306	4725				

<<< Fold Here >>>

All interpretations are opinions based on inferences from electrical or other measurements and we cannot and do not guarantee the accuracy or correctness of any interpretation, and we shall not, except in the case of gross or willful negligence on our part, be liable or responsible for any loss, costs, damages, or expenses incurred or sustained by anyone resulting from any interpretation made by any of our officers, agents or employees. These interpretations are also subject to our general terms and conditions set out in our current Price Schedule.

Comments

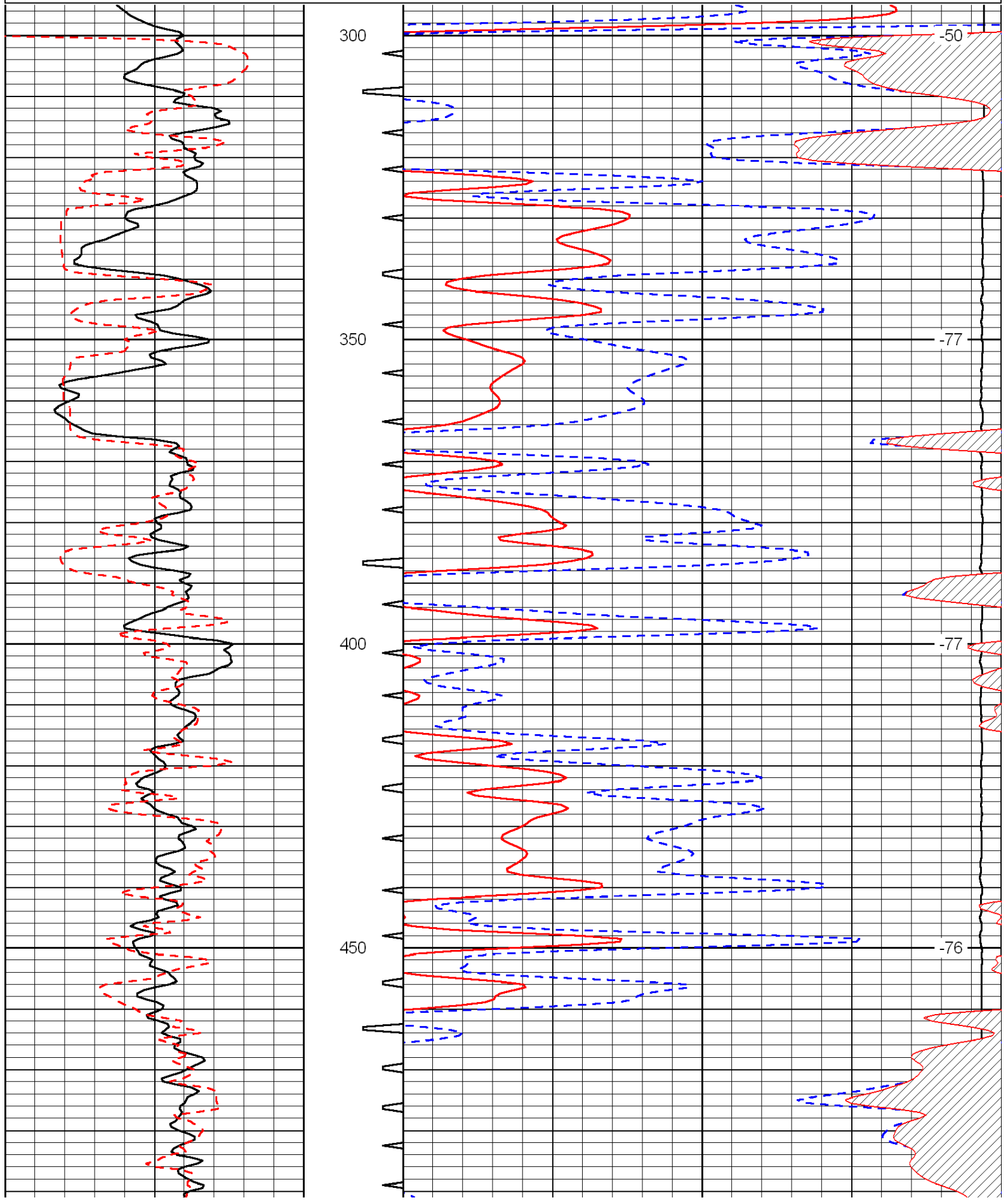
Thank you for using Log-Tech, Inc.  
(785) 625-3858

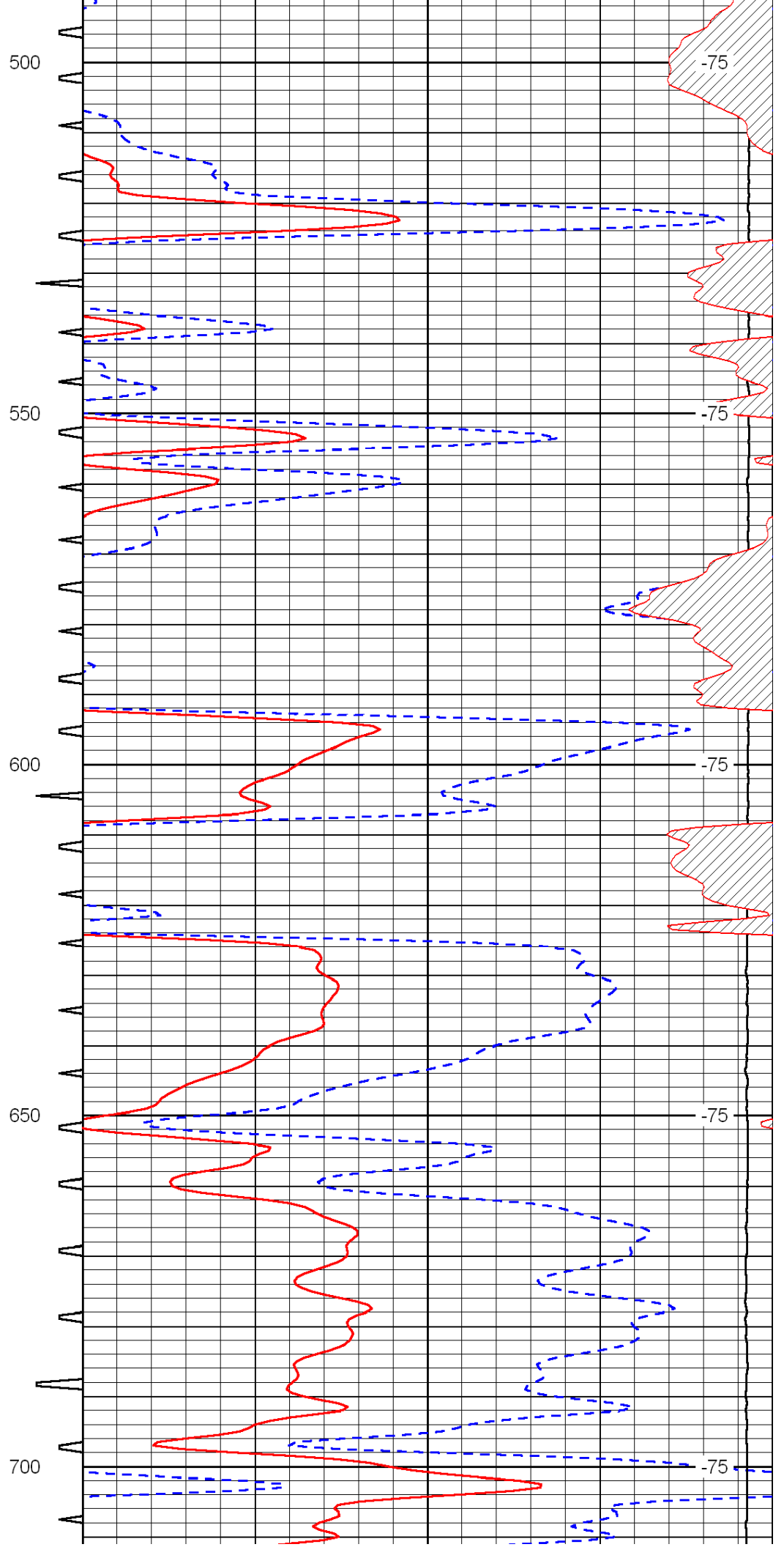
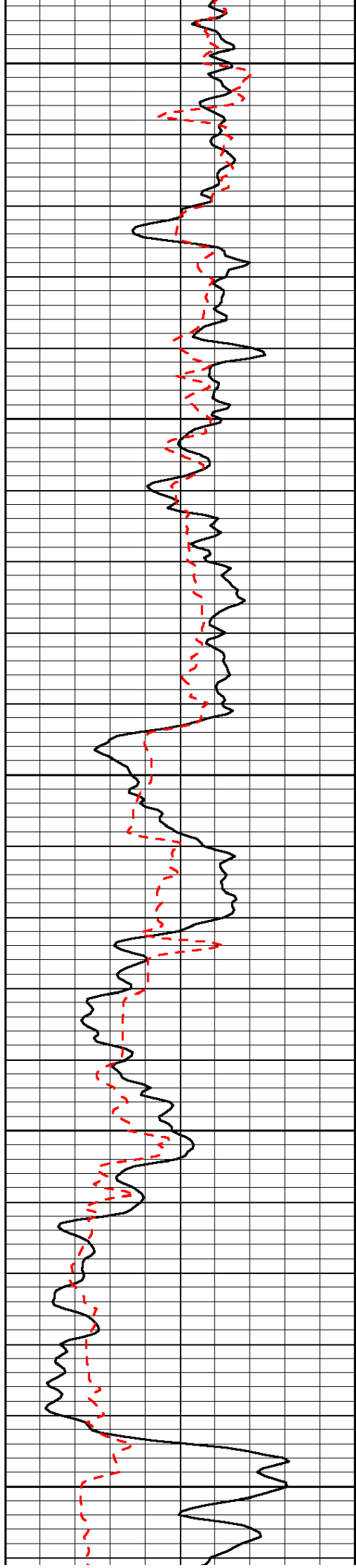
Jetmore, 3 West, 1/4 South, West Into

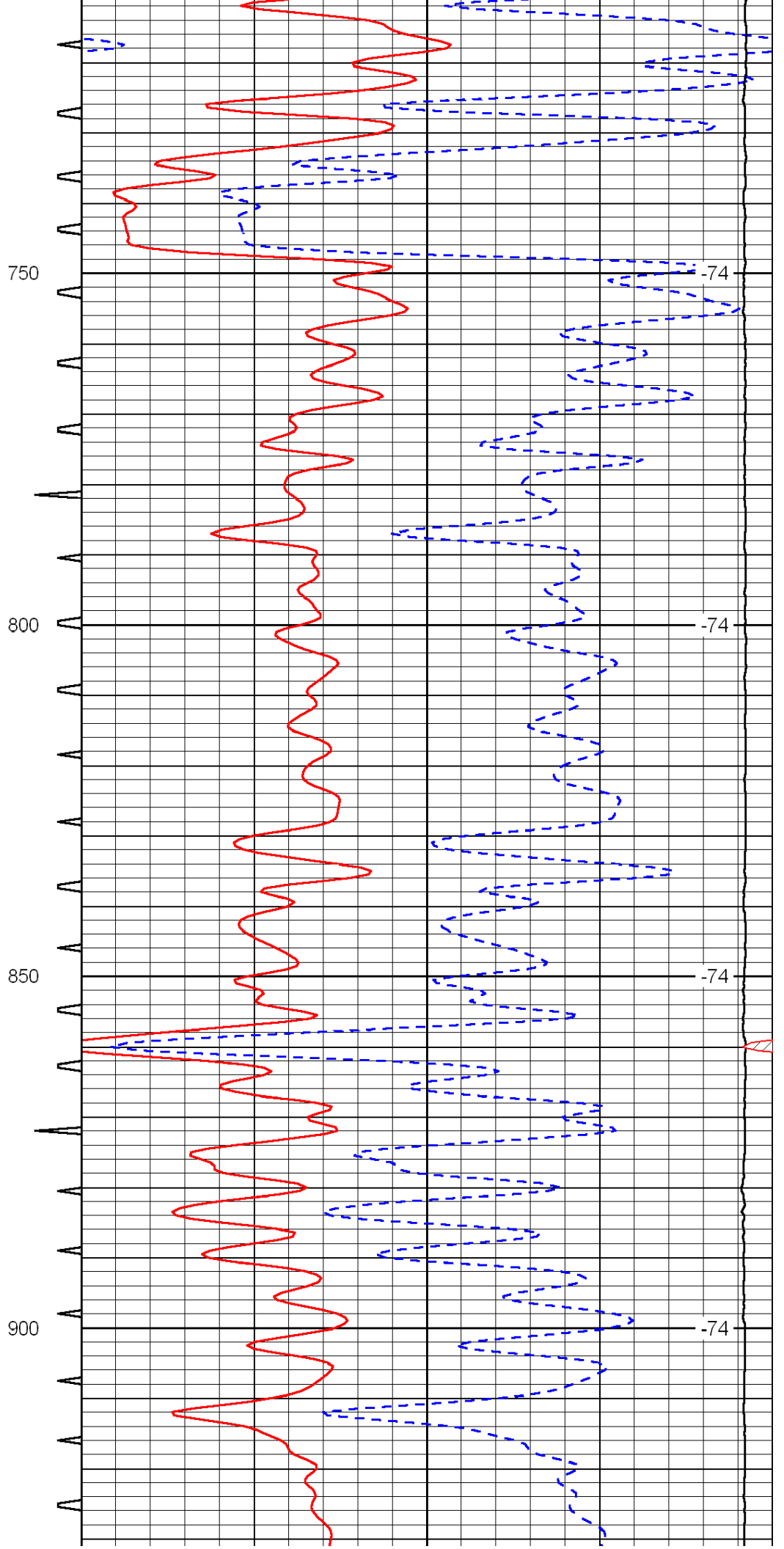
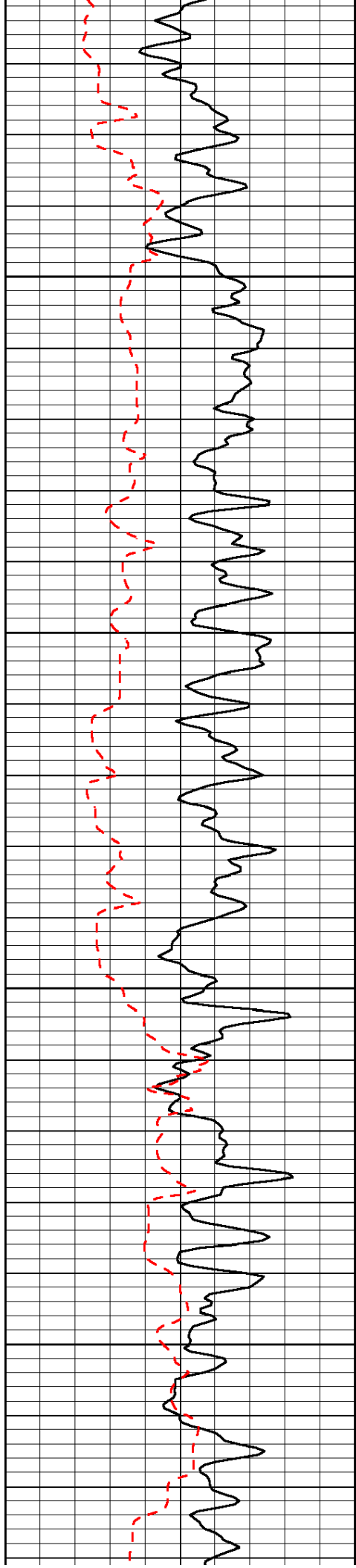
Database File: c:\warrior\data\amwar\_king no. 1-4\amwarriorhd.db  
 Dataset Pathname: dil/amwrstck  
 Presentation Format: sonic  
 Dataset Creation: Sat Jun 19 00:34:46 2010  
 Charted by: Depth in Feet scaled 1:240

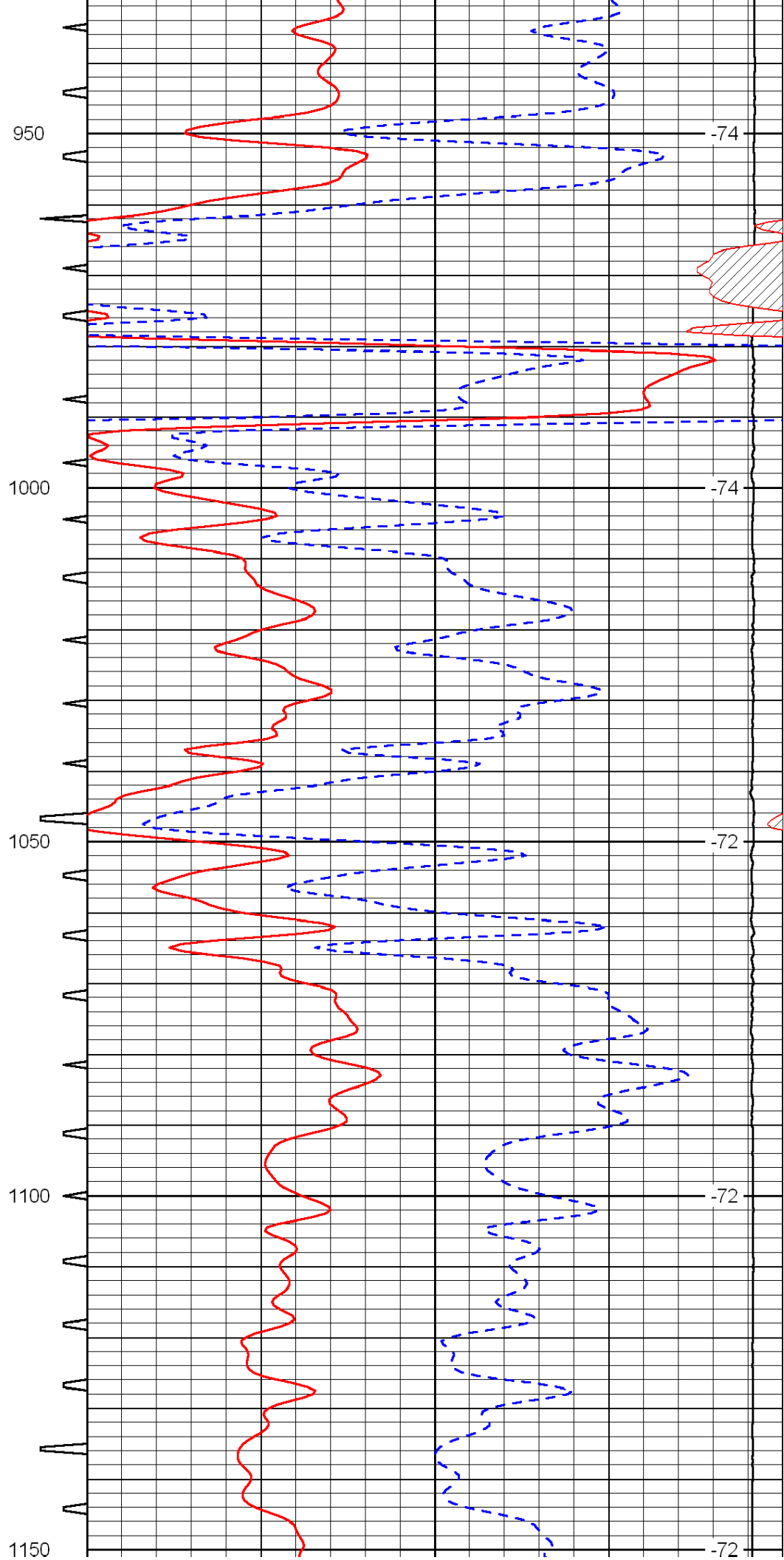
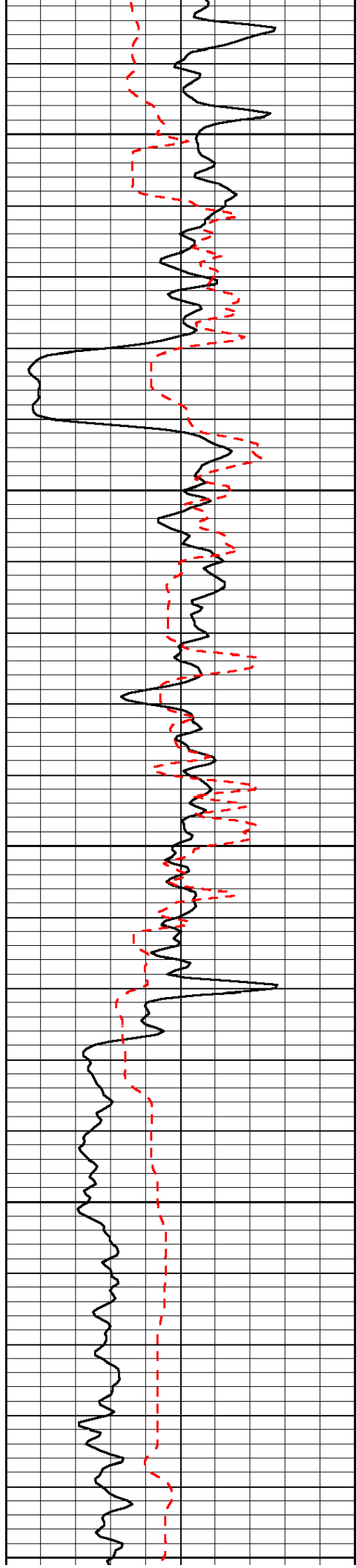
0	Gamma Ray	150	Sonic Int	140	Delta Time (usec/ft)	40
150	Gamma Ray	300	5	0	SPOR	-10
6	Caliper (GAPI)	16		15000	LTEN (lb)	0

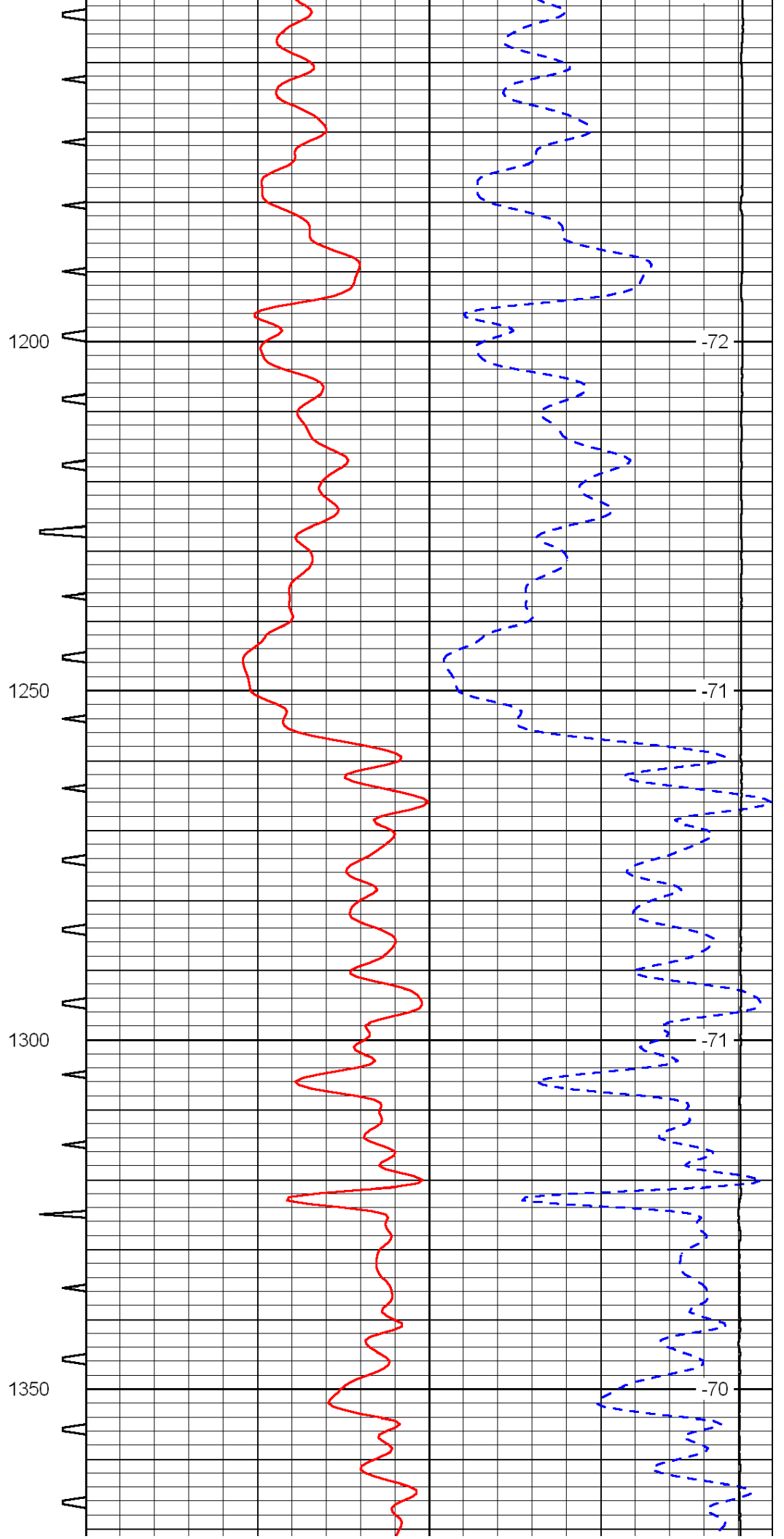
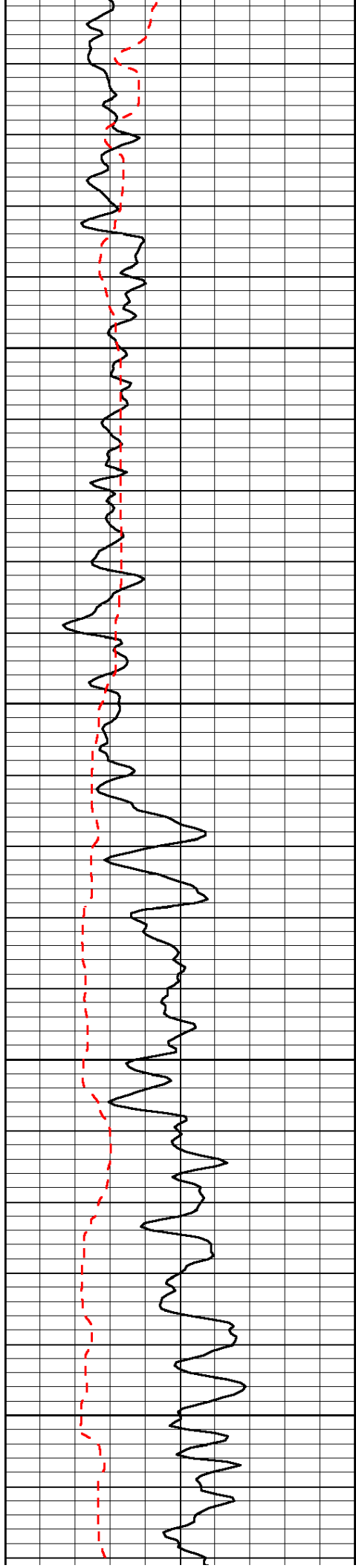
LSPD

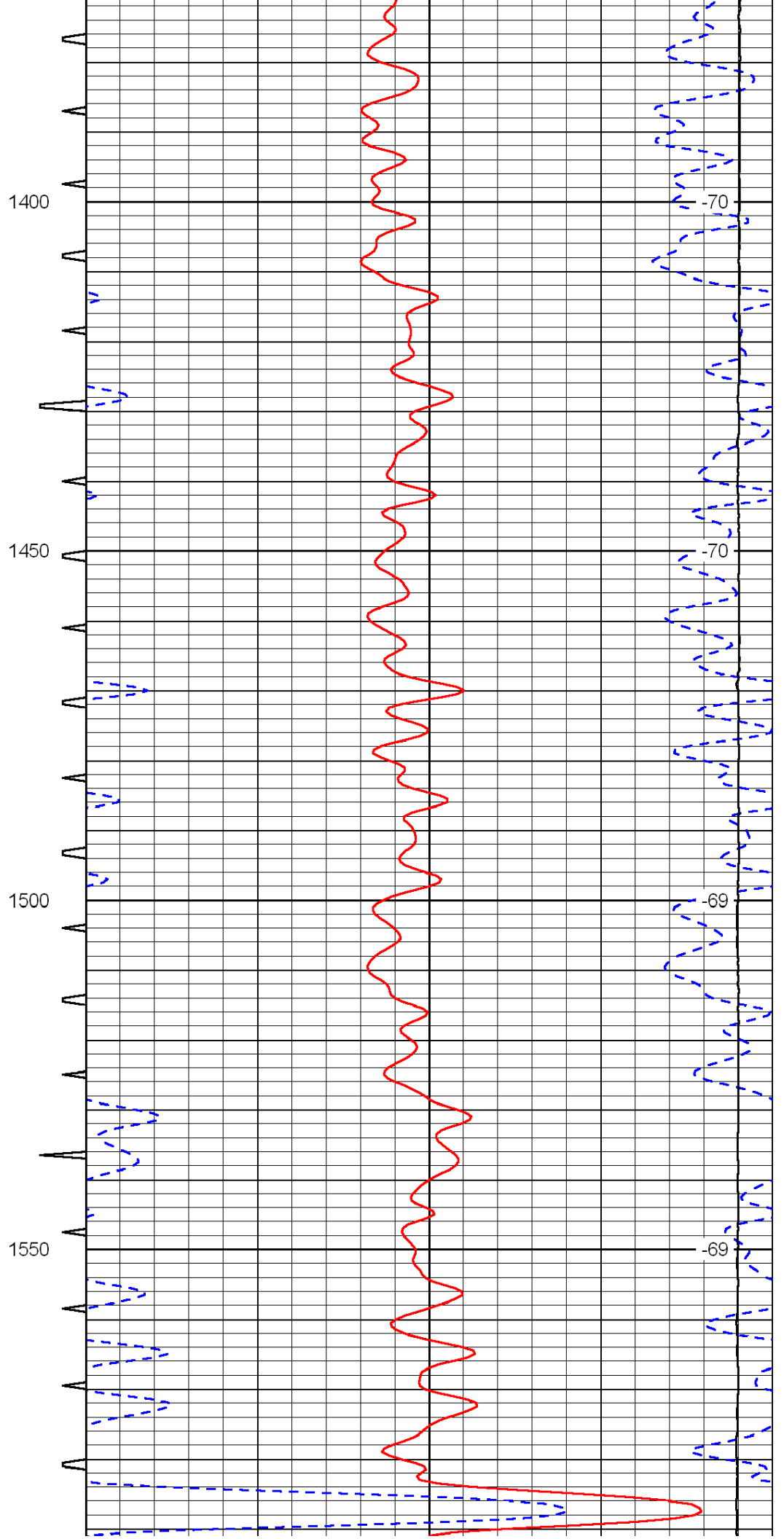
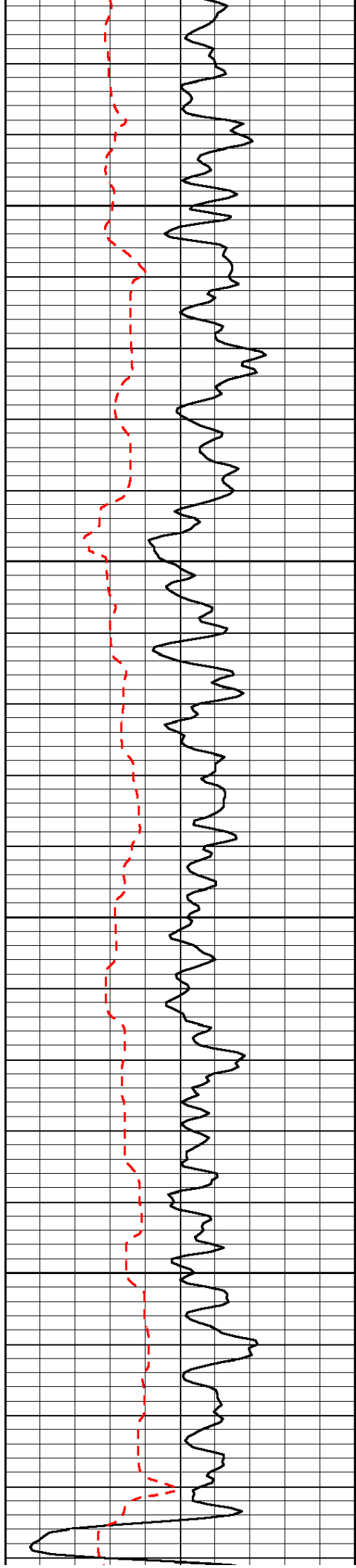


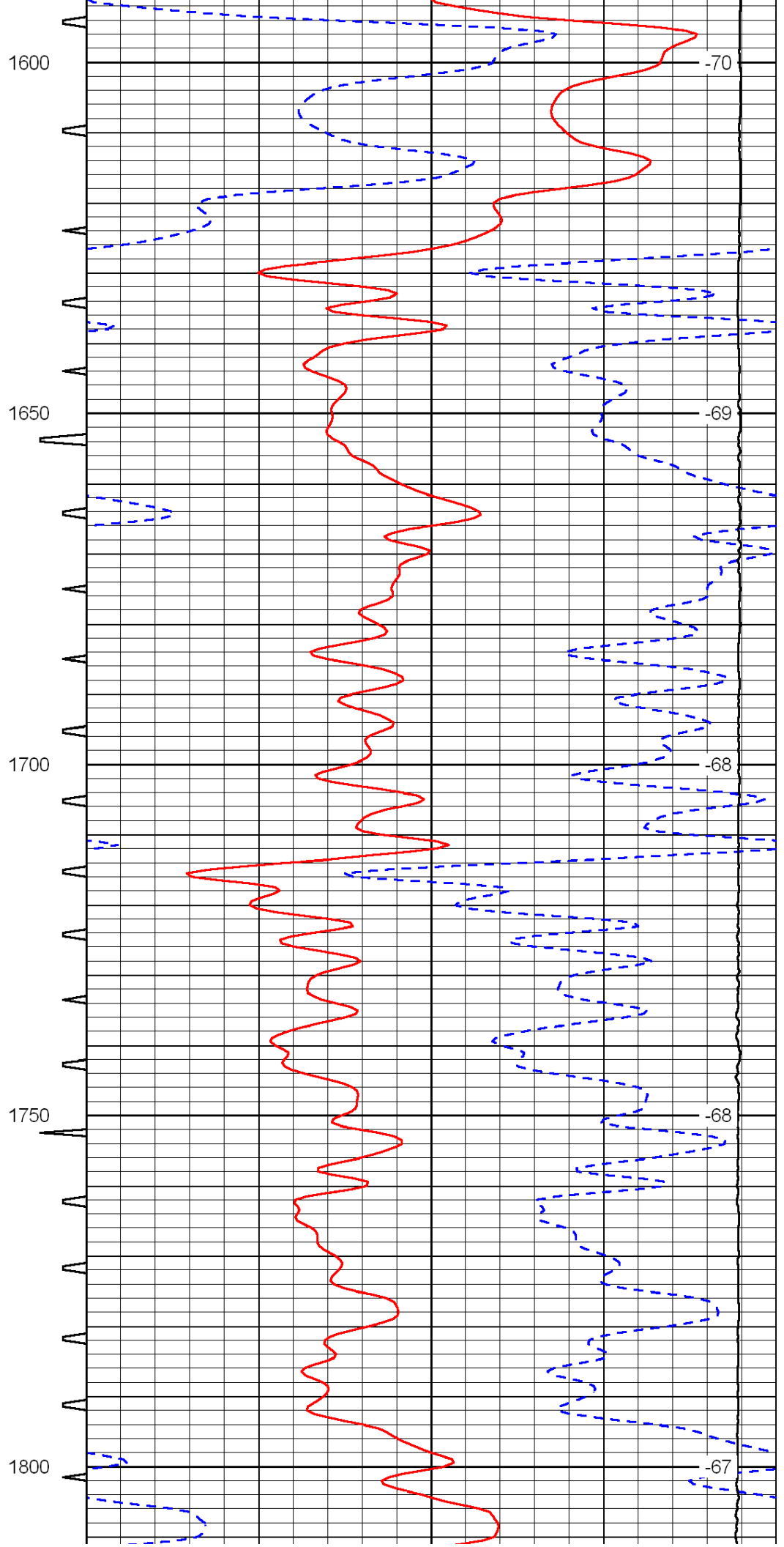
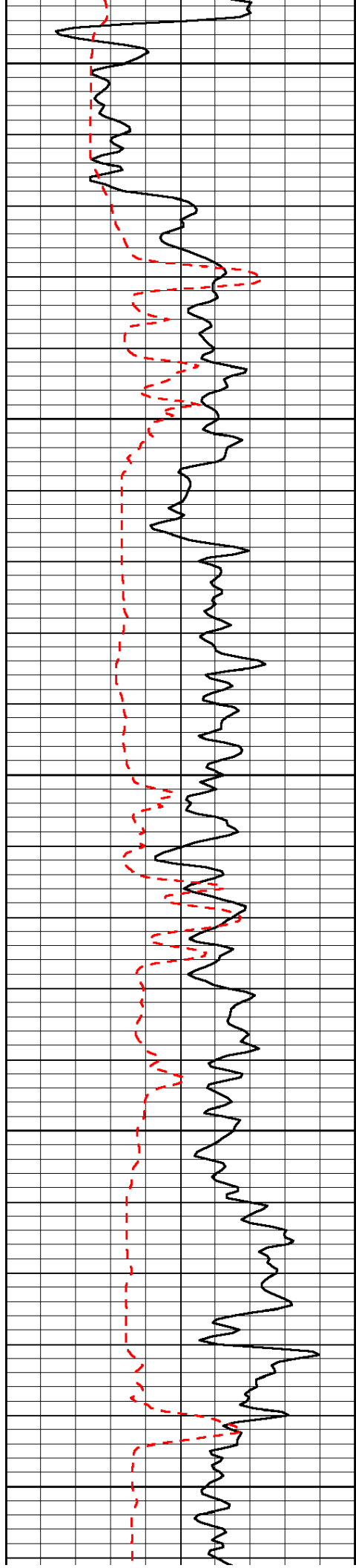


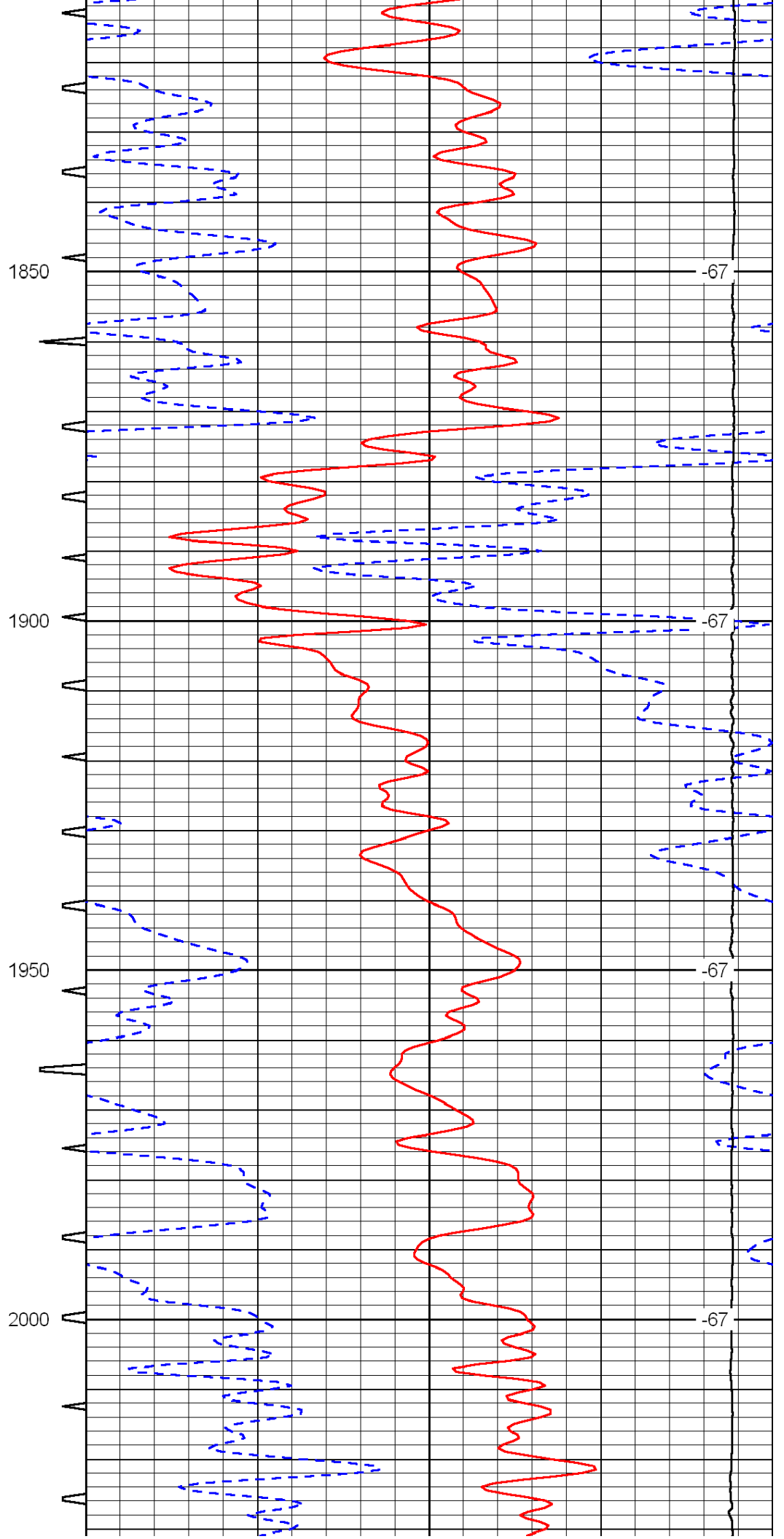
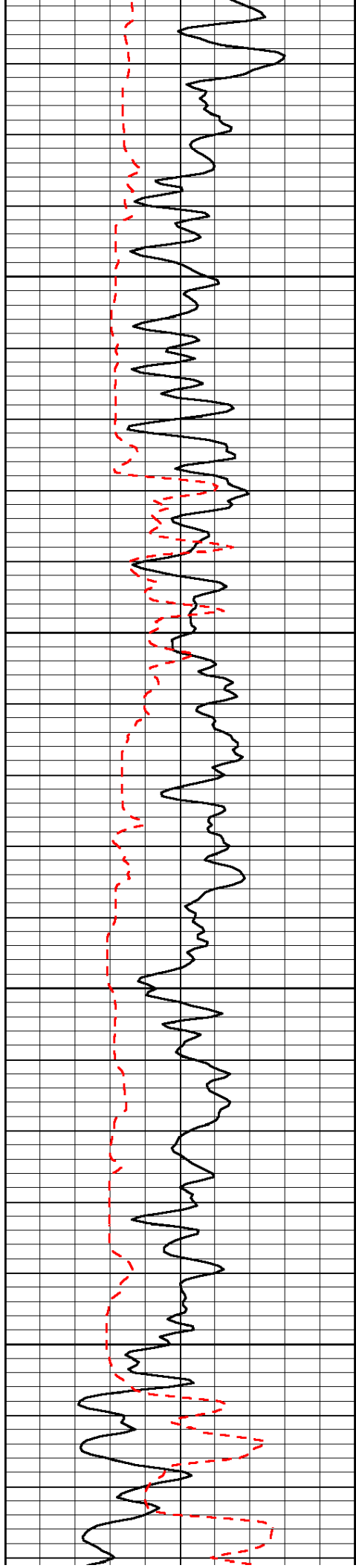


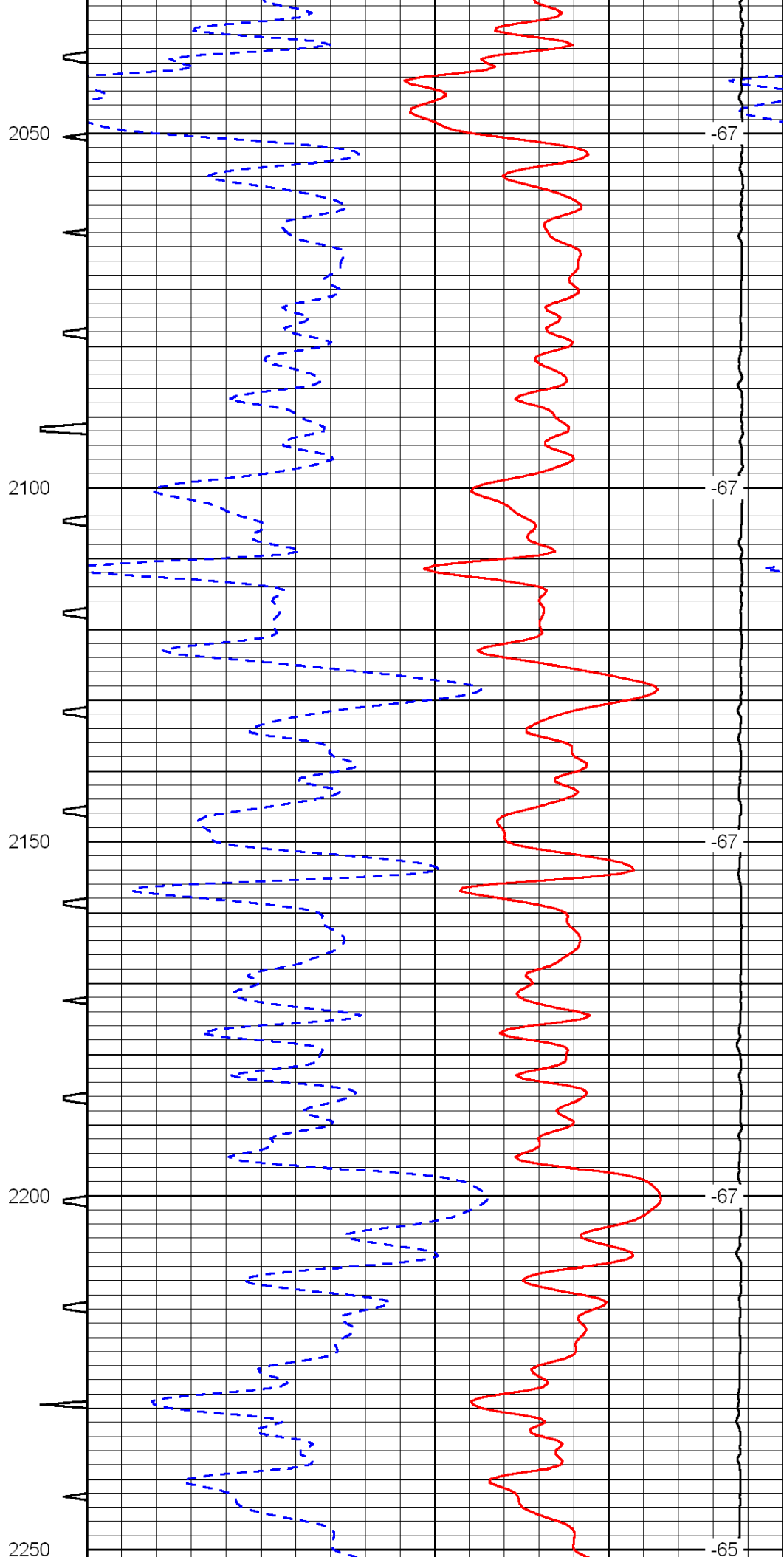
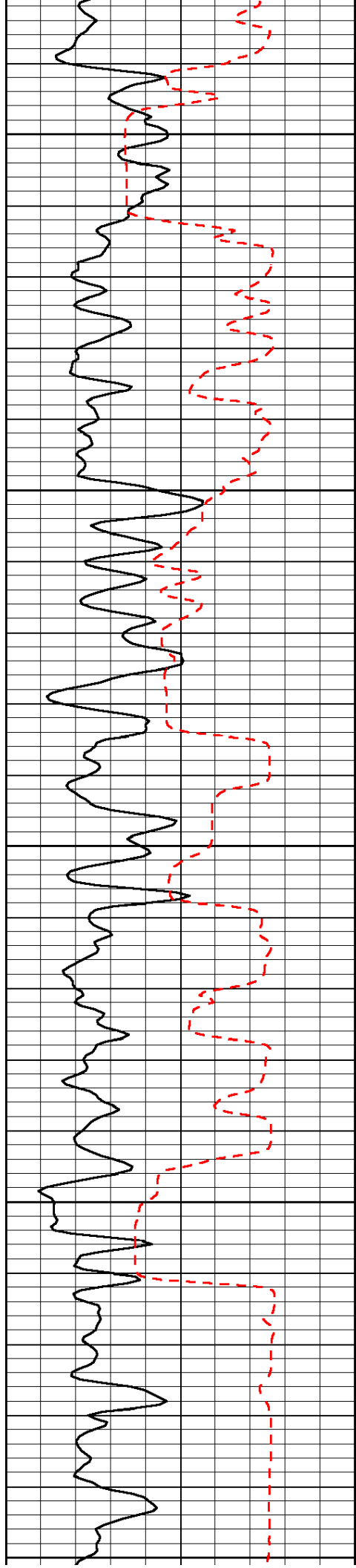


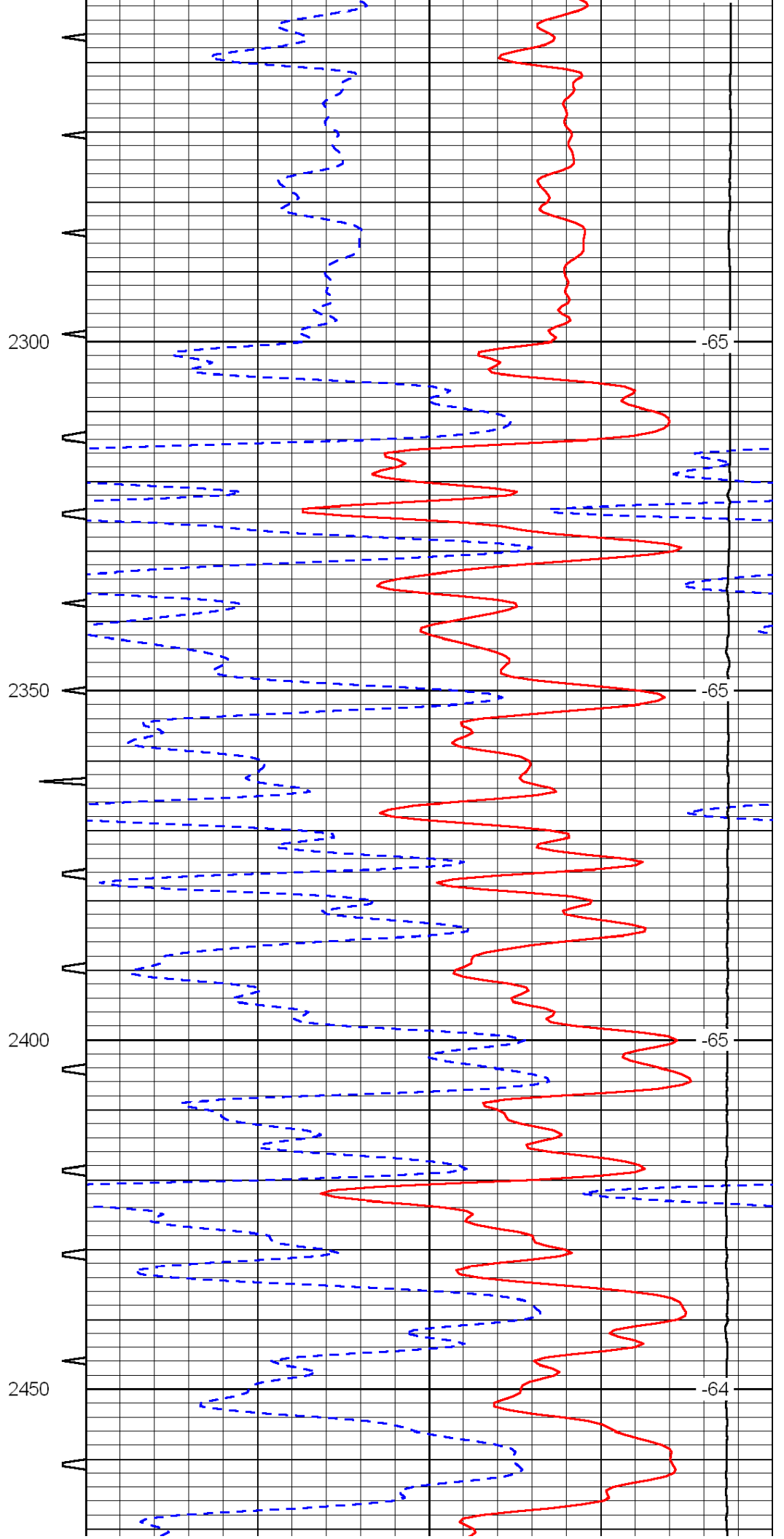
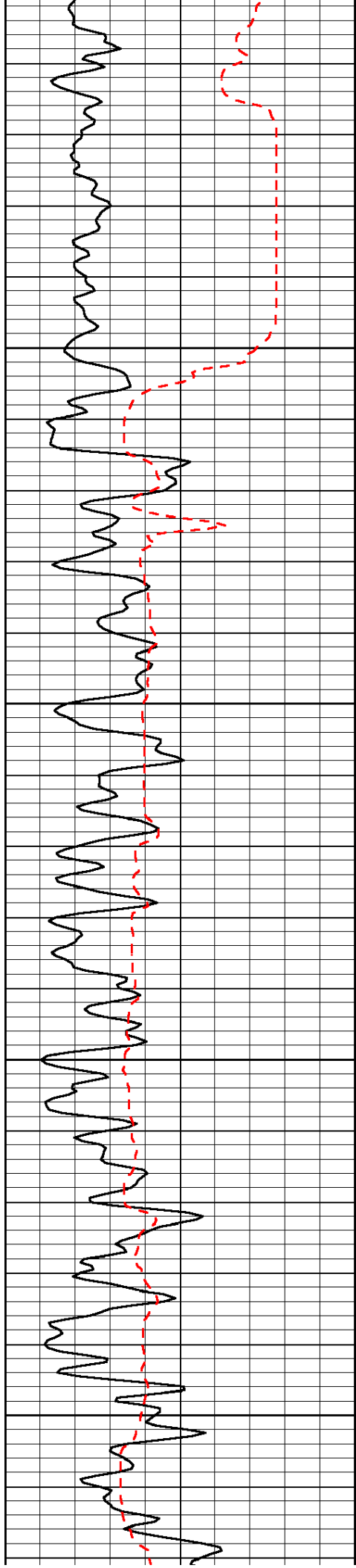


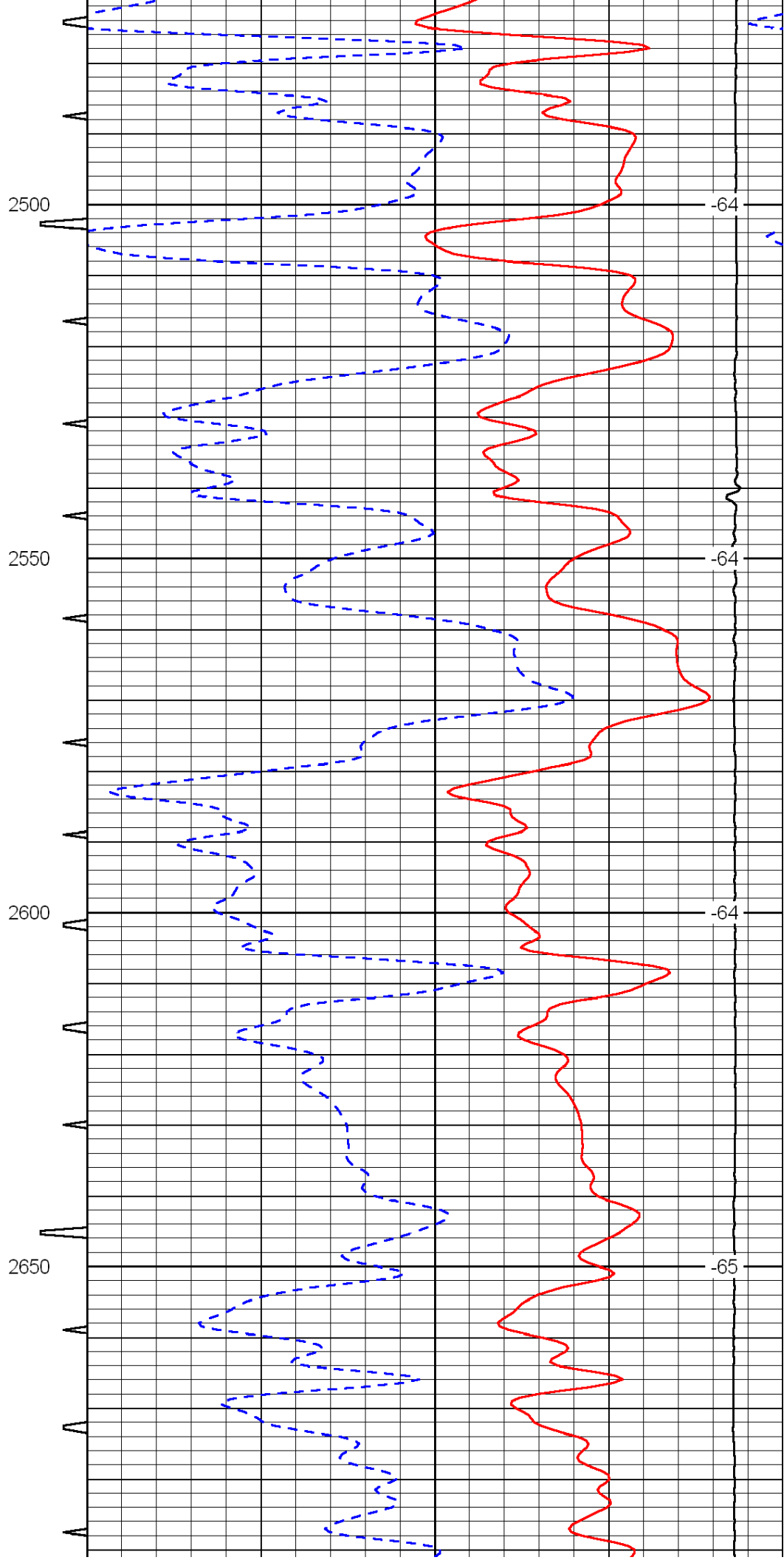
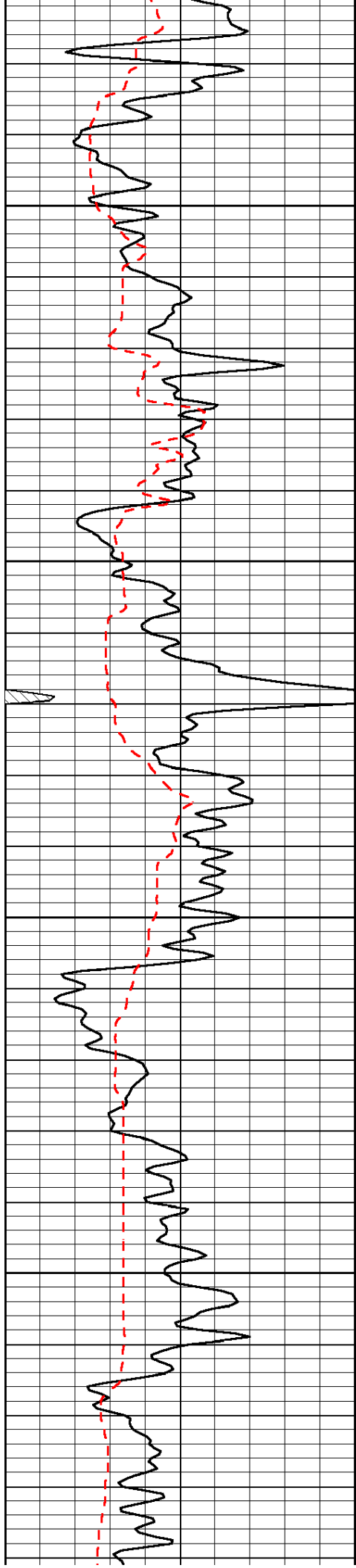


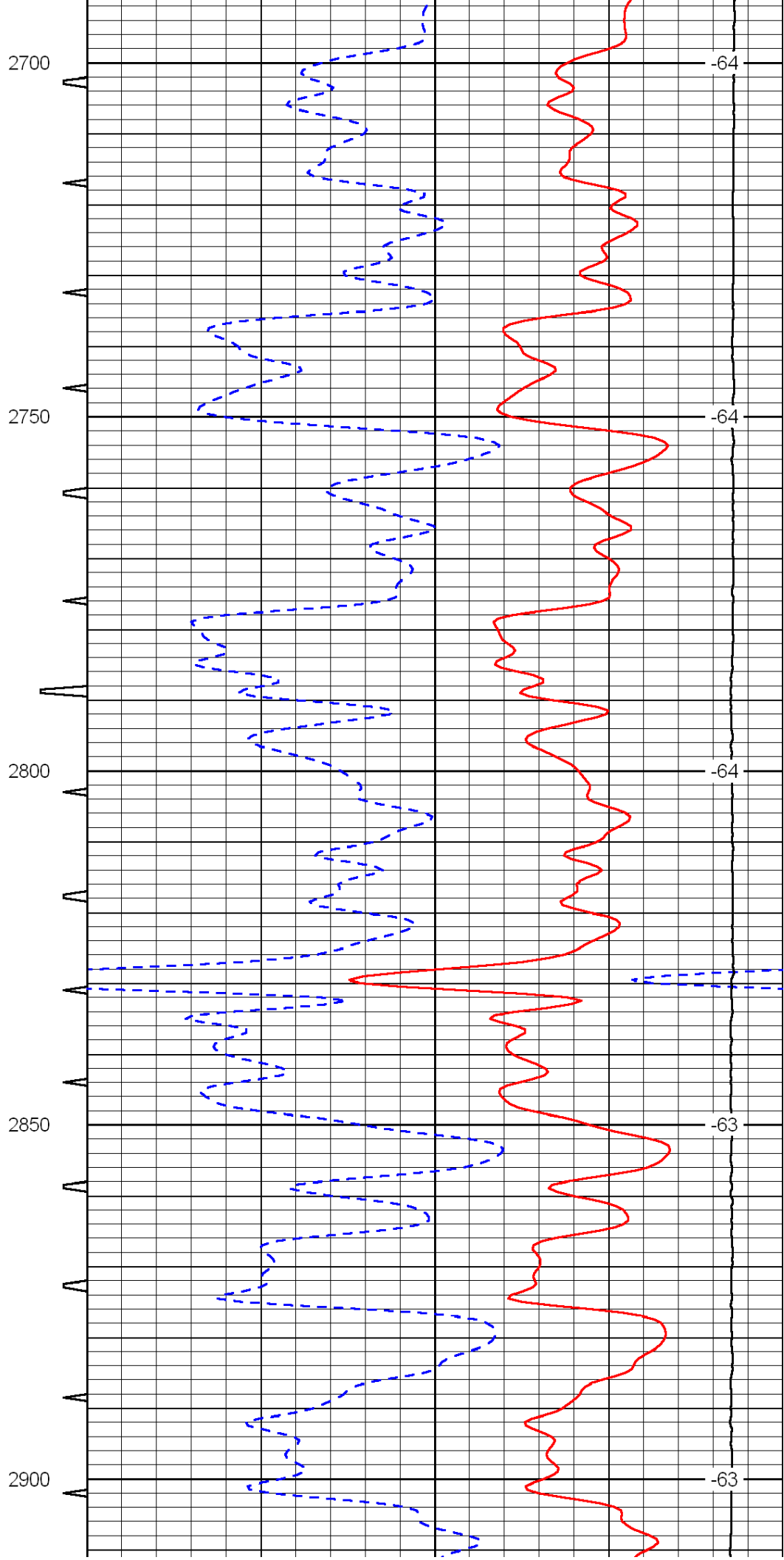
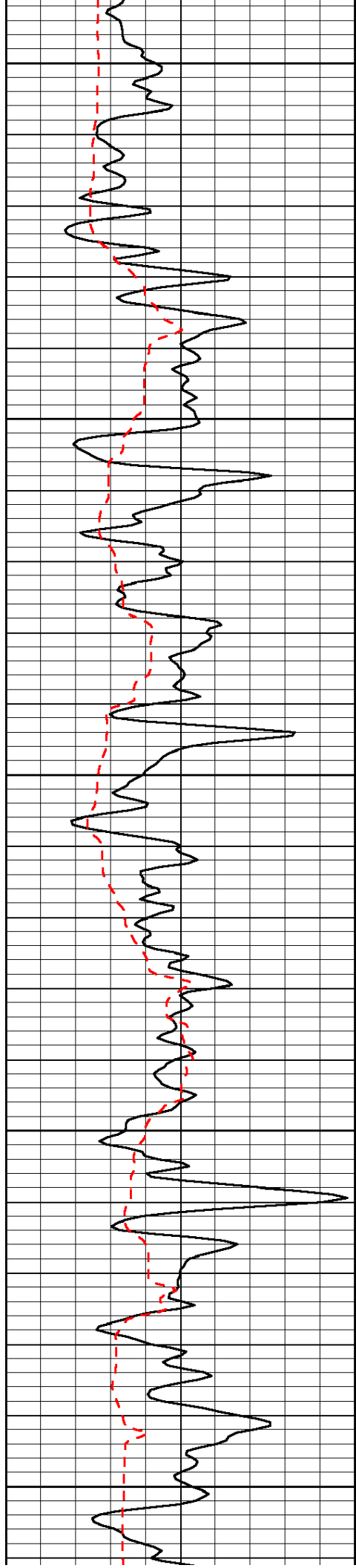


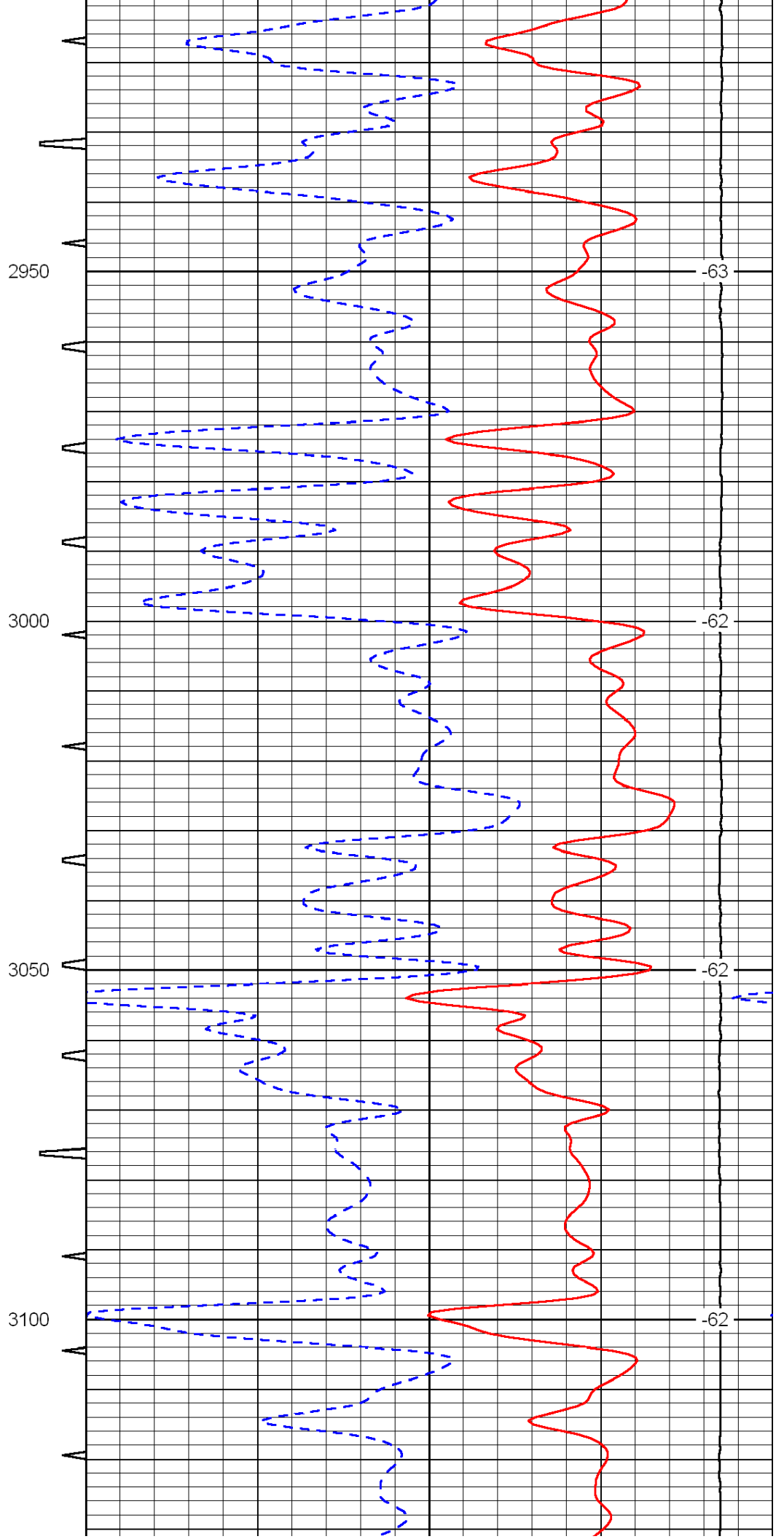
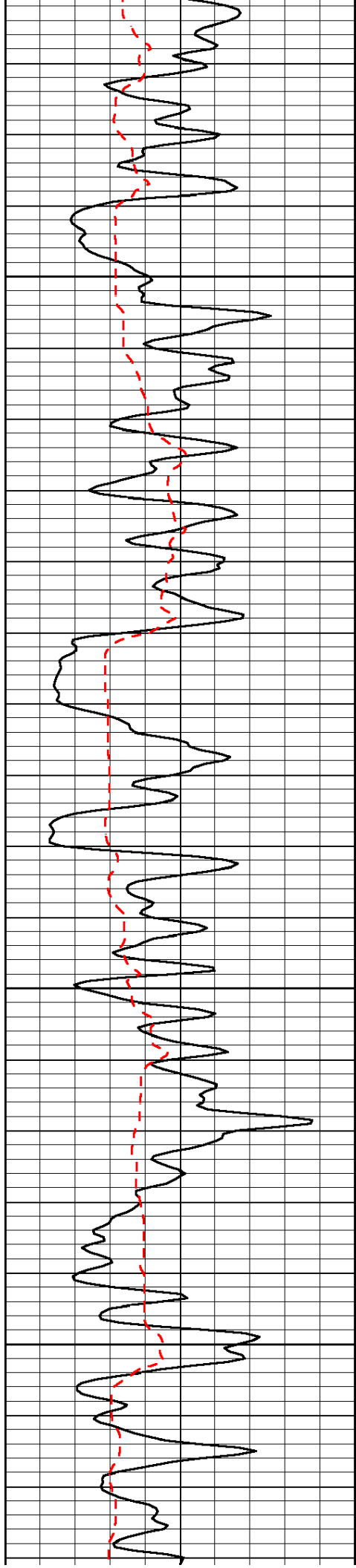


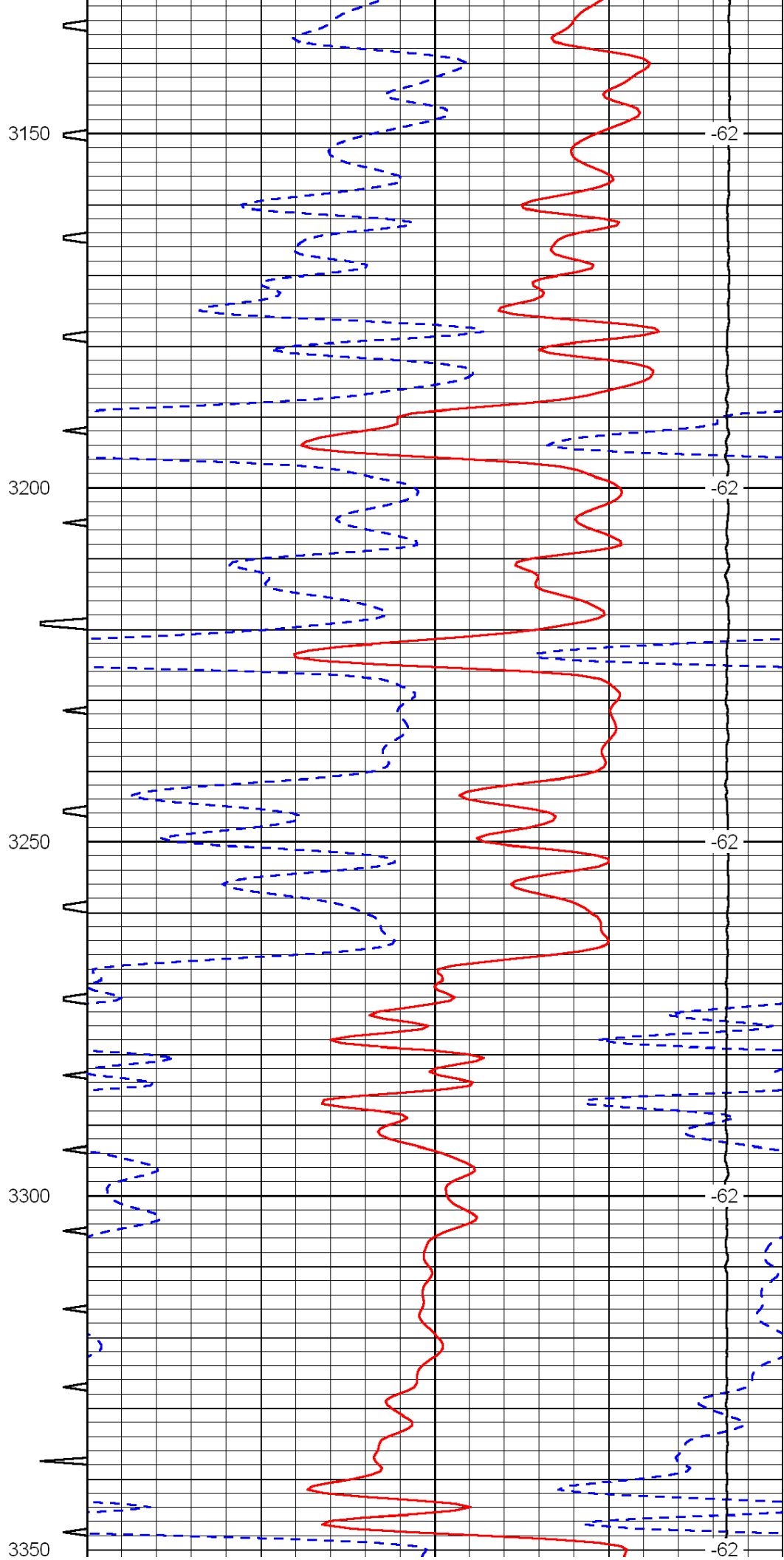
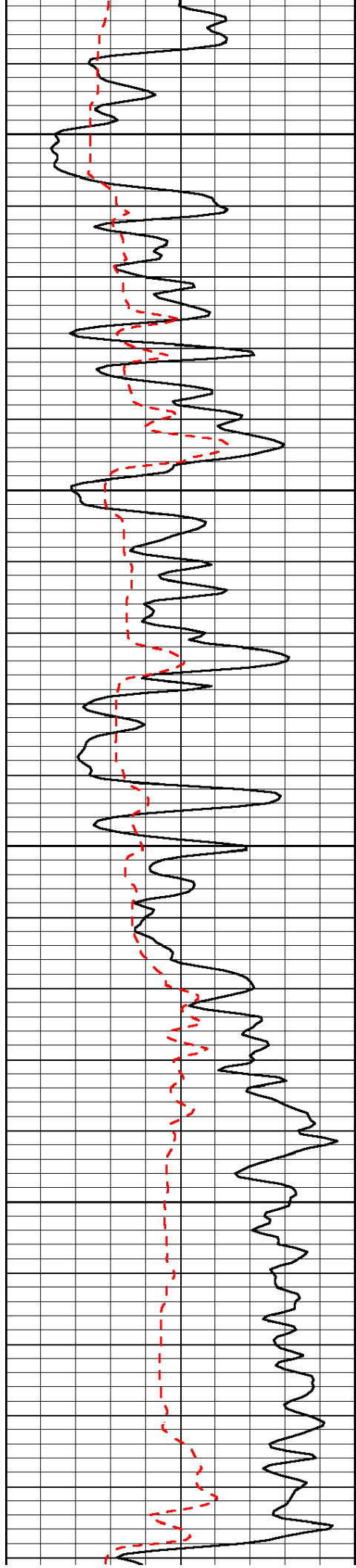


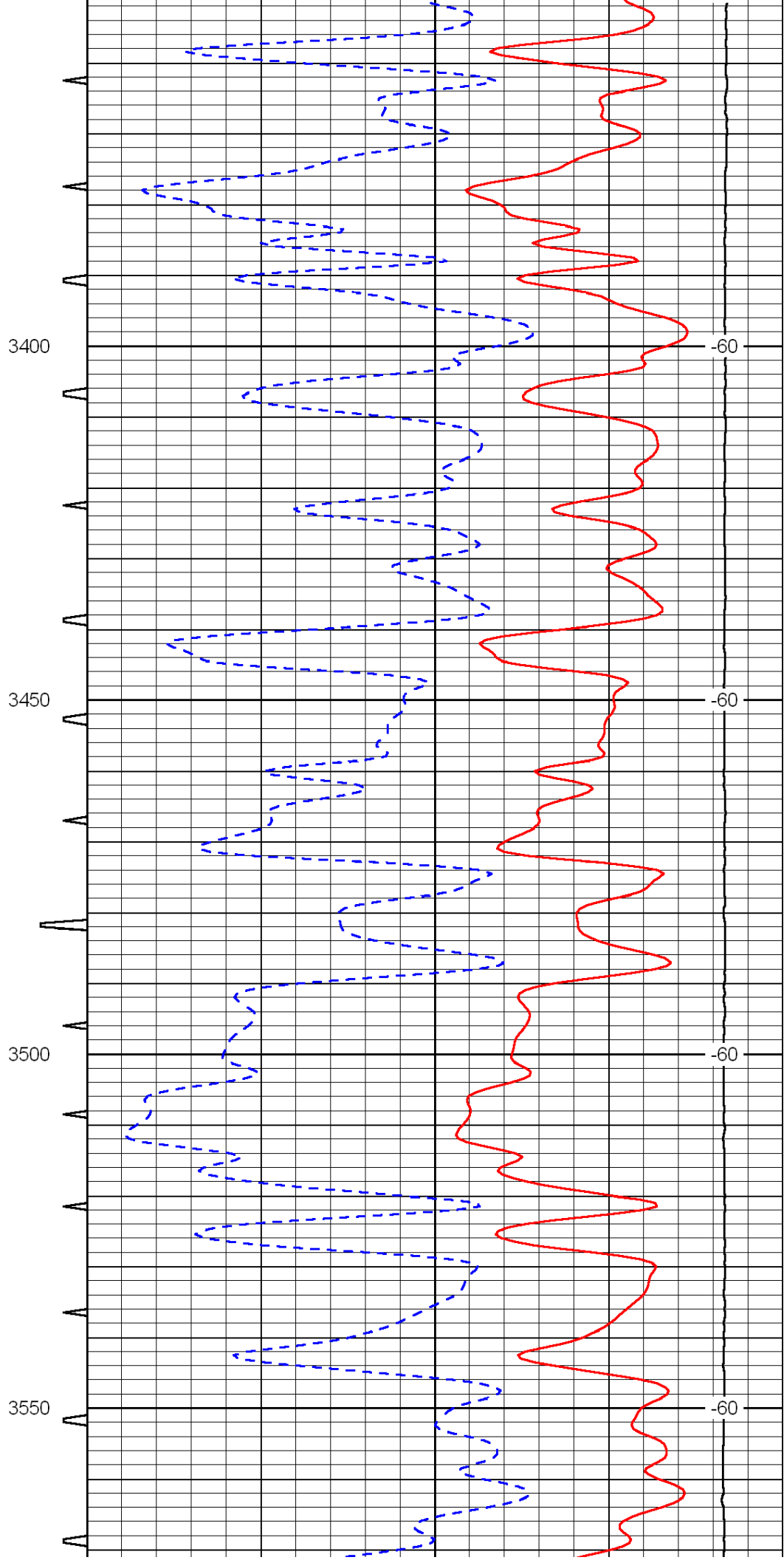
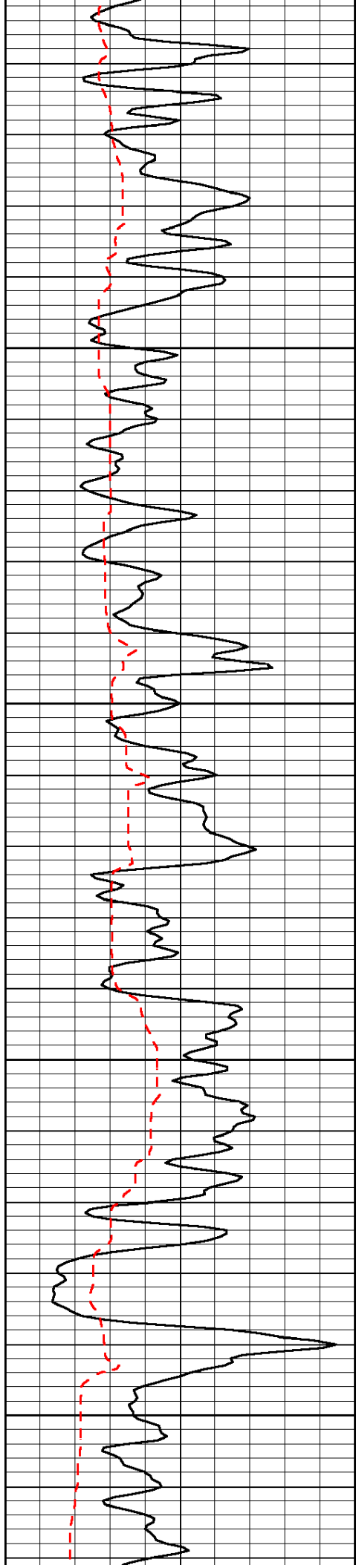


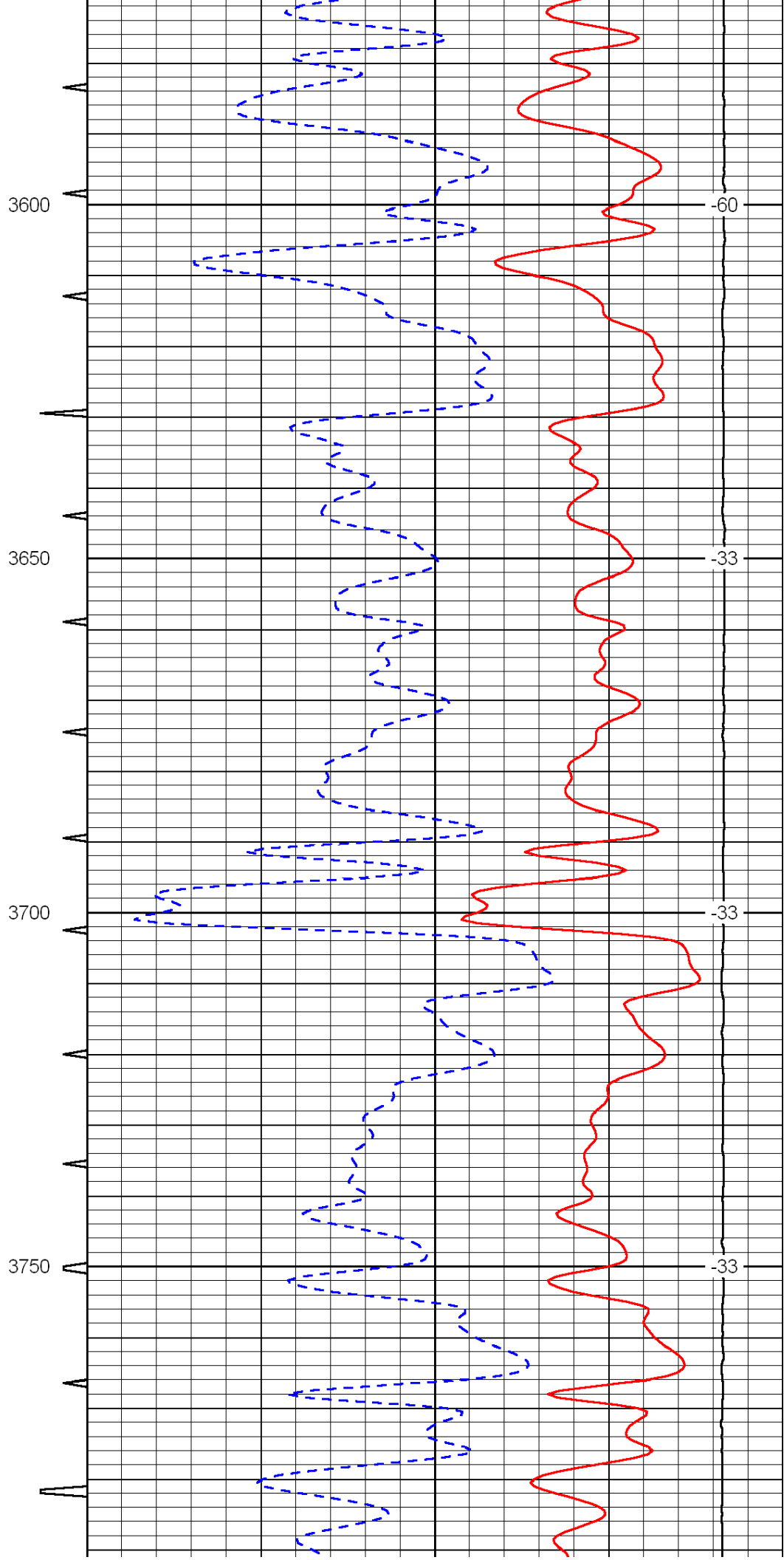
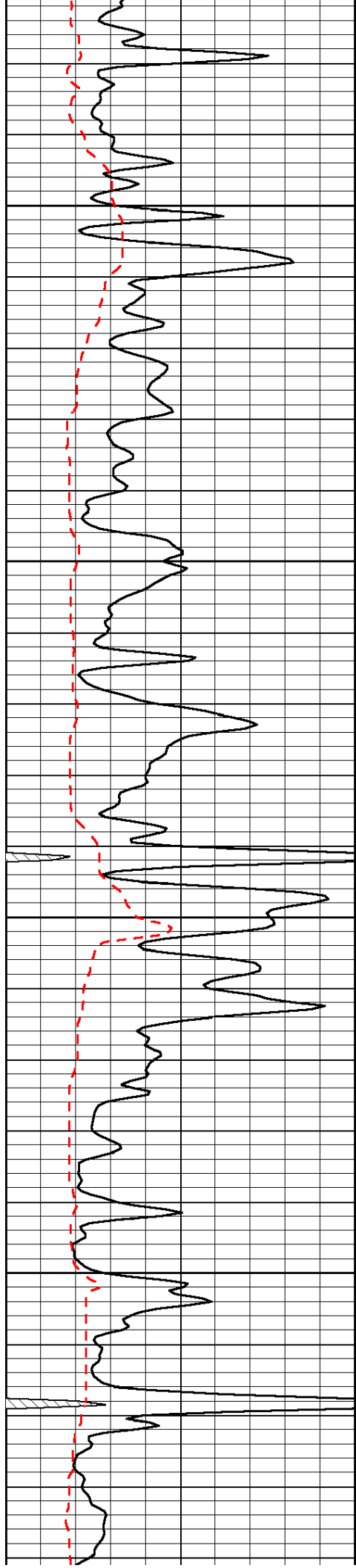


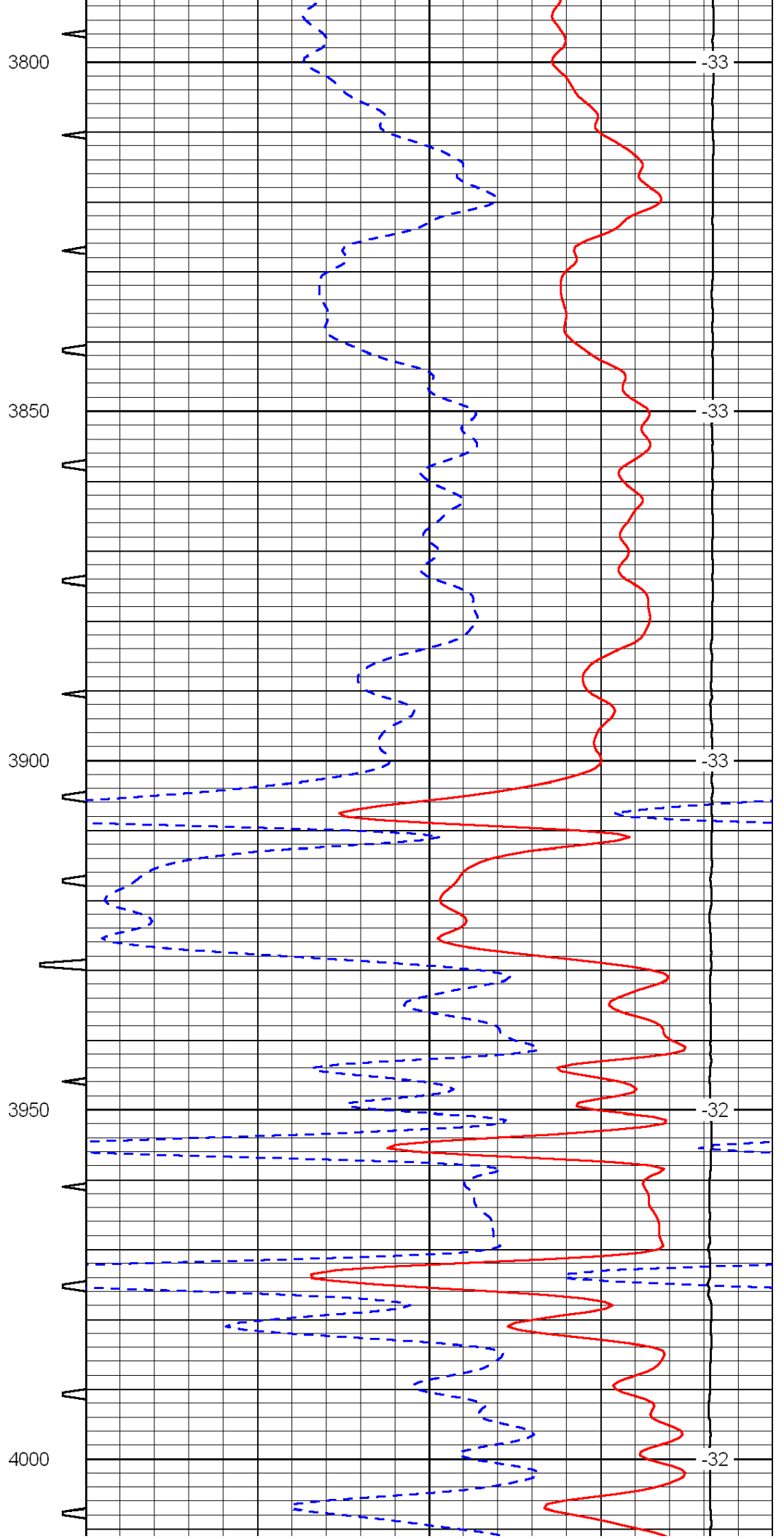
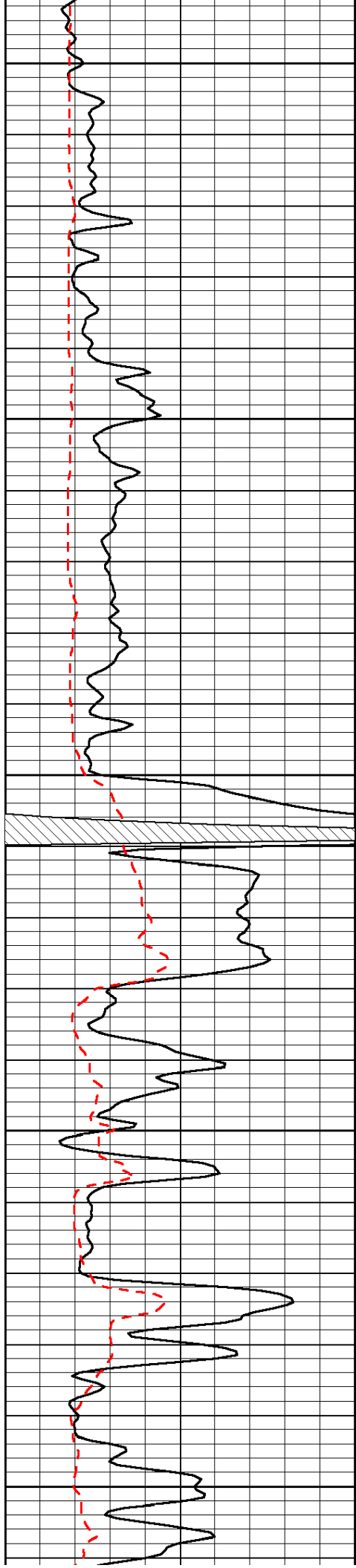


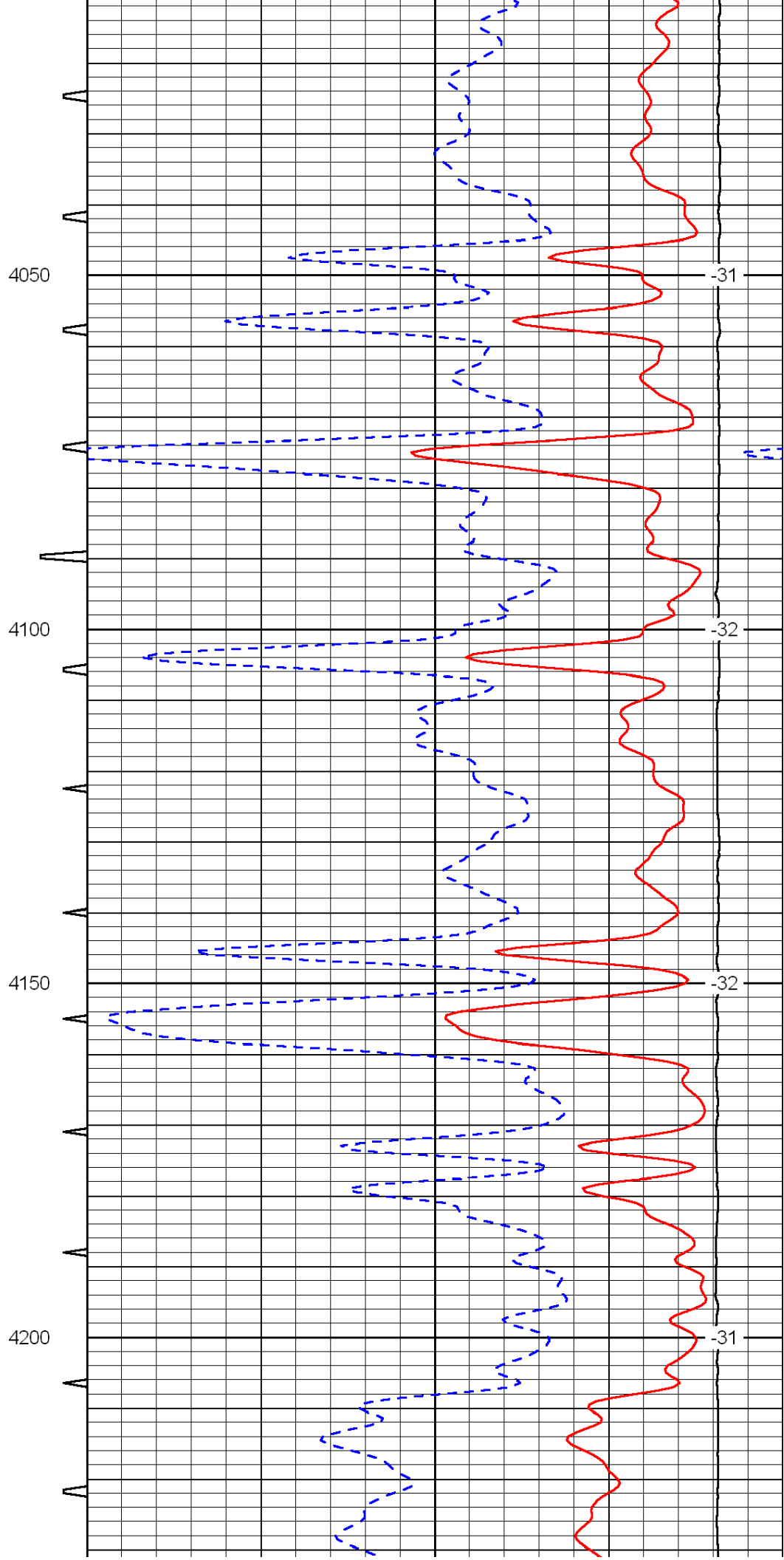
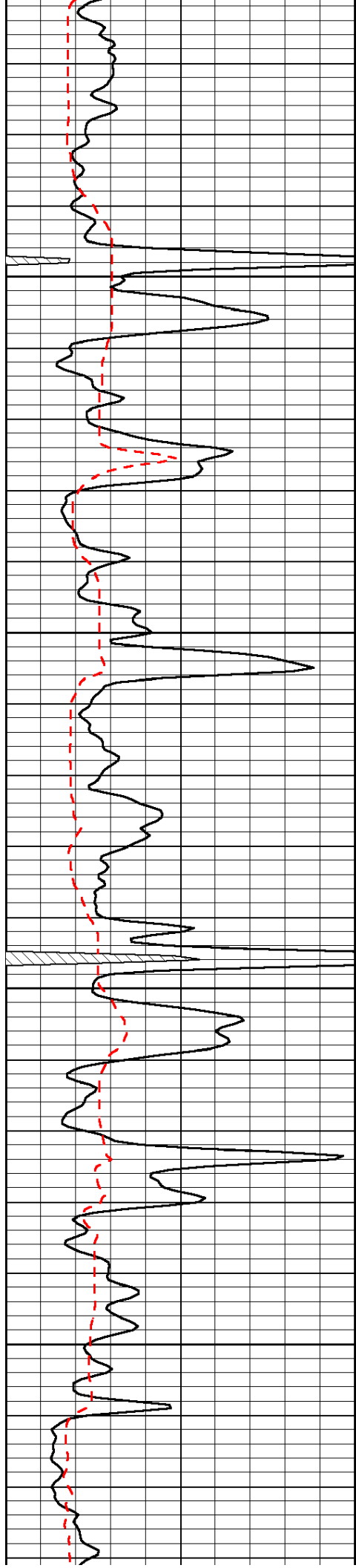


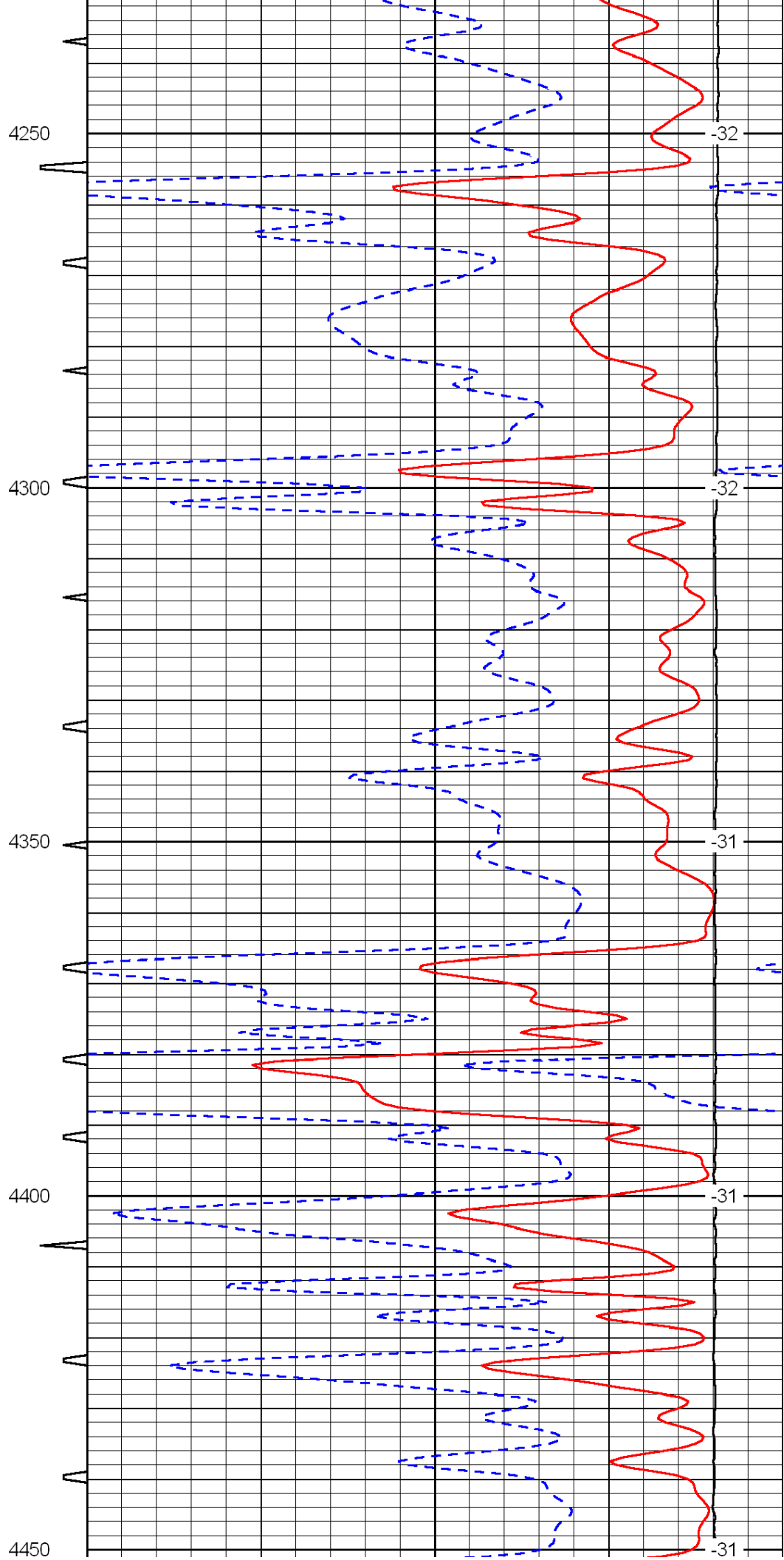
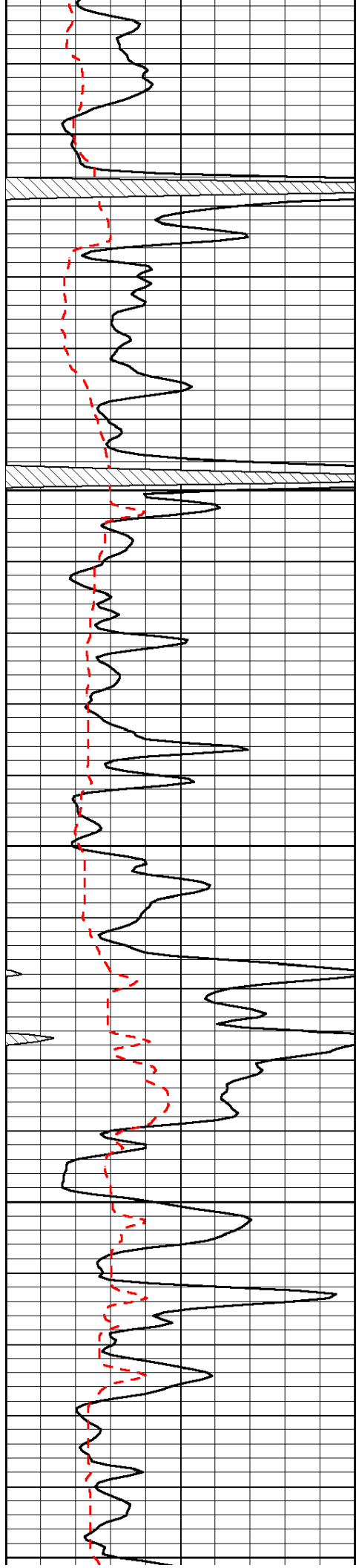


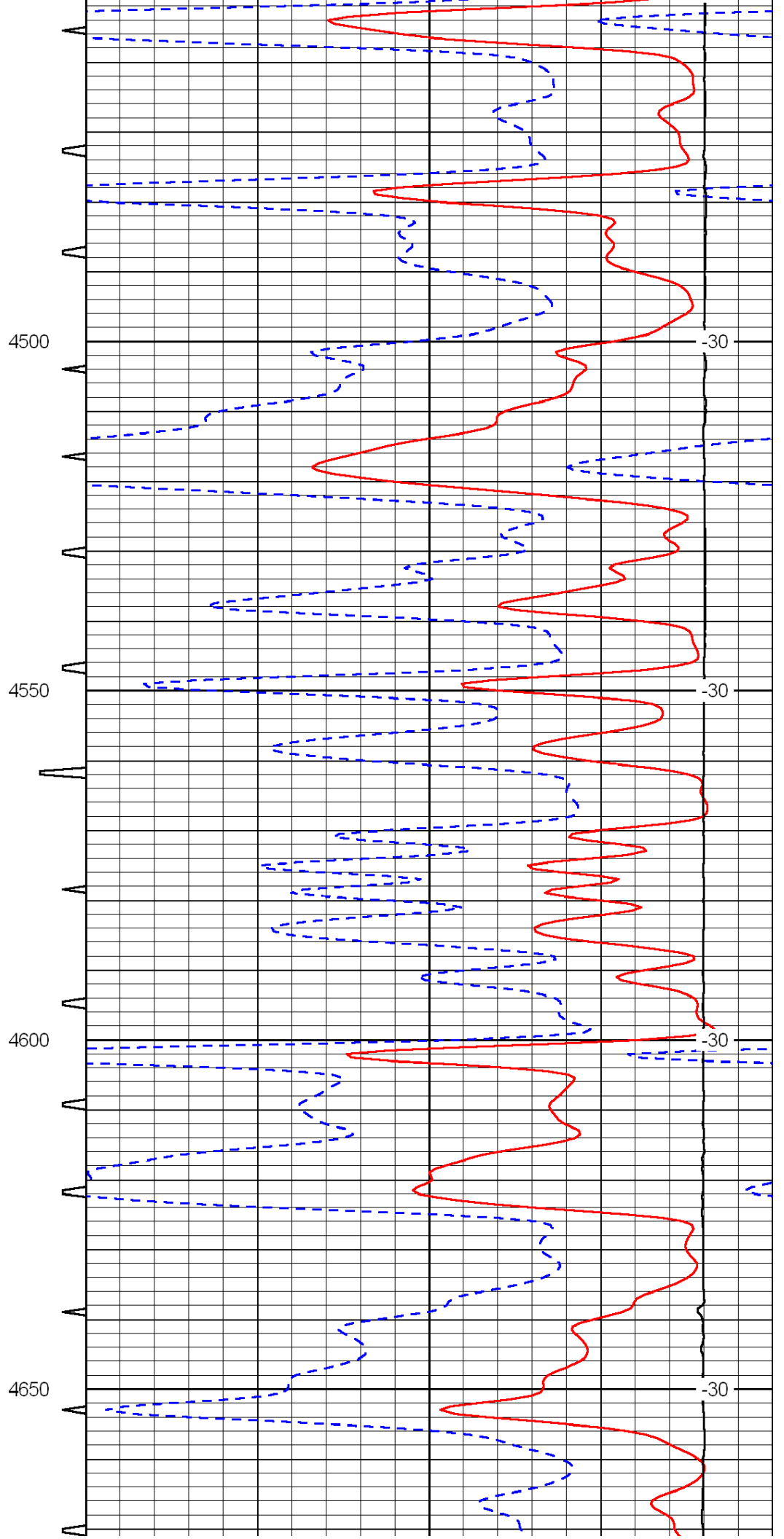
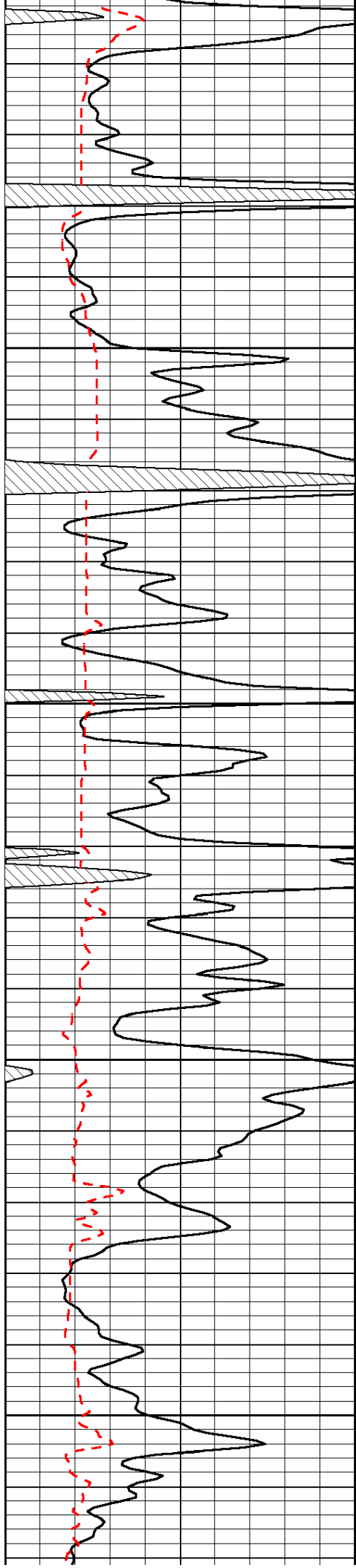


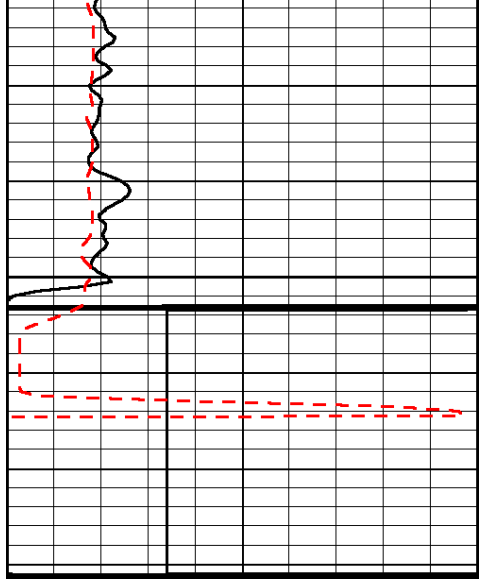




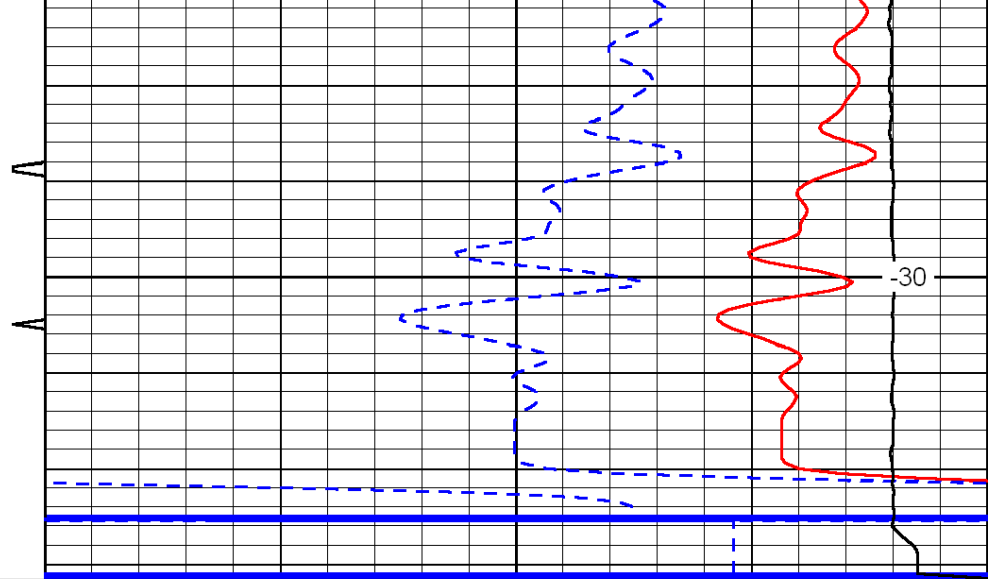








4700



-30

0	Gamma Ray	150	Sonic Int	140	Delta Time (usec/ft)	40
150	Gamma Ray	300	5	0	SPOR	-10
6	Caliper (GAPI)	16		15000	LTEN (lb)	0

LSPD