

Company: McLENNING PRODUCTION MAINTENANCE
Well: MELANDER # 4
Field: WAYSIDE-HAVANA
County: MONTGOMERY
State: KANSAS

Location: SE SW NE NW
1159 FNL & 3465 FEL
SEC 2 TWP 34S RGE 14E
Log Measured From: G.L.
Drilling Measured From: G.L.

API #: 15-125-32215
Elevation: 978'
K.P. D.P. G.L. 978'

Date: 6-7-12
Run Number: ONE
Depth Driller: 788'
Depth Logger: 771'
Bottom Logged Interval: SURFACE
Top Logged Interval: SURFACE
Open Hole Size: WATER
Type Fluid: WATER
Density / Viscosity: ---
Max. Recorded Temp: SURFACE
Estimator/Cement Top: ---

Time Well Ready: ---
Time Logger on Bottom: ---
Equipment Number: 3
Location: DEWEY
Recorded By: HERREN
Witnessed By: McLENNING

Run Number: ---
Borehole Record: ---
Bit: ---
From: ---
To: ---
Size: ---
Tubing Record: ---
Weight: ---
From: ---
To: ---

Casing Record: ---
Surface String: 8.625"
Prod. String: ---
Production String: 4.5"
Liner: ---

Size: ---
Vg/UF: ---
Top SURFACE
Bottom 20'
TD

<<< Fold Here >>>

All interpretations are opinions based on inferences from electrical or other measurements and we cannot and do not guarantee the accuracy or correctness of any interpretation, and we shall not, except in the case of gross or willful negligence on our part, be liable or responsible for any loss, costs, damages, or expenses incurred or sustained by anyone resulting from any interpretation made by any of our officers, agents or employees. These interpretations are also subject to our general terms and conditions set out in our current Price Schedule.

Comments

Green Country Wireline

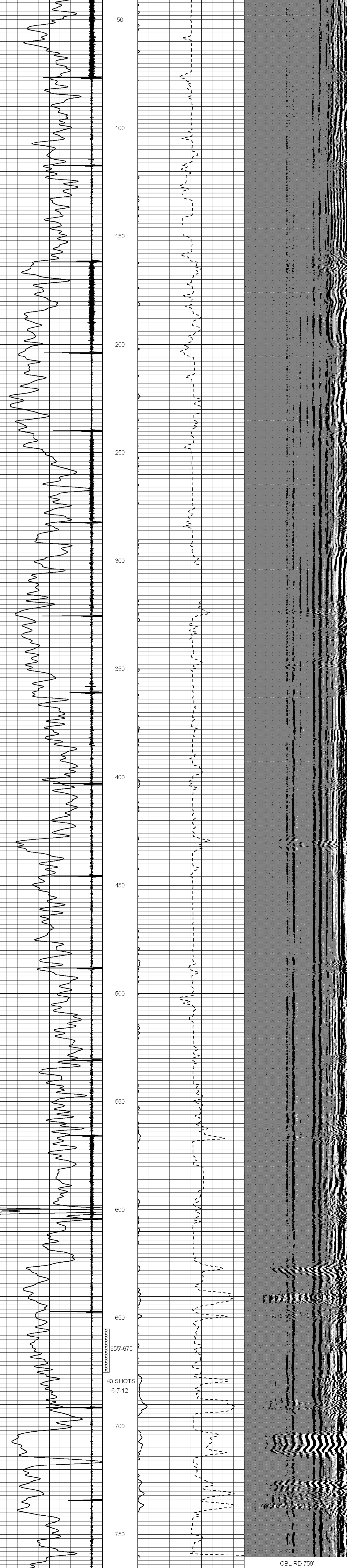
GAMMA RAY CEMENT BOND

Database File: melander4.db
Dataset Pathname: melander4/run1/pass1
Presentation Format: cbl_dr
Dataset Creation: Thu Jun 07 08:28:20 2012 by Log Std Casedhole 09081
Charted by: Depth in Feet scaled 1:240

9 Collar Locator -1
0 Gamma Ray (GAPI) (GAPI) 60

-2 Amplitude (mV) 90 200
1000 Travel Time (usec) 250

Variable Density 1200



9 Collar Locator -1
0 Gamma Ray (GAPI) (GAPI) 60

-2 Amplitude (mV) 90 200
1000 Travel Time (usec) 250

Variable Density 1200

CBL RD 759'