



Pioneer Energy Services

Dual Compensated Porosity Log

15-135-25461-00-00

API No.

Company **Robert F. Hembree**
 Well **Petersilie #3**
 Field **Petersilie Northeast**
 County **Ness** State **Kansas**

Location
 1628' FSL & 330' FEL

Sec: 12 Twp: 20S Rge: 24W

Other Services
 DIL
 MEL

Permanent Datum Ground Level Elevation 2323
 Log Measured From Kelly Bushing 7 Ft. Above Perm. Datum
 Drilling Measured From Kelly/ Bushing

Elevation
 K.B. 2330
 D.F.
 G.L. 2323

Date	10/1/2012	
Run Number	One	
Type Log	CNL / CDL	
Depth Driller	4424	
Depth Logger	4422	
Bottom Logged Interval	4401	
Top Logged Interval	3700	
Type Fluid In Hole	Chemical	
Salinity, PPM CL	3300	
Density Level	9.3	
Level	Full	
Max. Rec. Temp. F	122	
Operating Rig Time	4 Hours	
Equipment -- Location	91 Hays	
Recorded By	D. Schmidt	
Witnessed By	Kurt Talbott	

Borehole Record

Casing Record

Run No.	Bit	From	To	Size	Wgt.	From	To
1	12.25	00	217	8.625	24#	00	217
2	7.875	217	4424				

<<< Fold Here >>>

All interpretations are opinions based on inferences from electrical or other measurements and we cannot and do not guarantee the accuracy or correctness of any interpretation, and we shall not, except in the case of gross or willful negligence on our part, be liable or responsible for any loss, costs, damages, or expenses incurred or sustained by anyone resulting from any interpretation made by any of our officers, agents or employees. These interpretations are also subject to our general terms and conditions set out in our current Price Schedule.

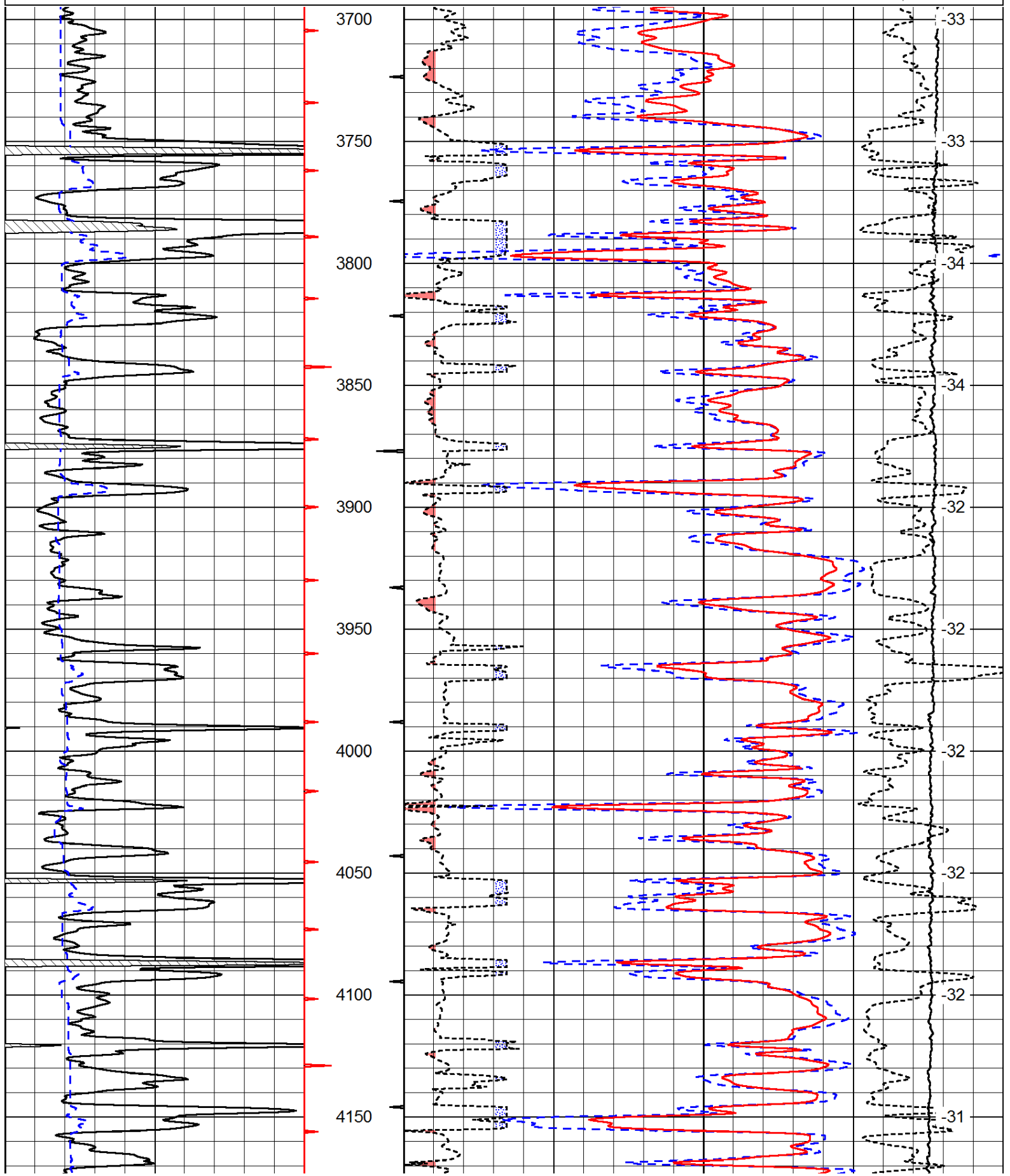
Comments

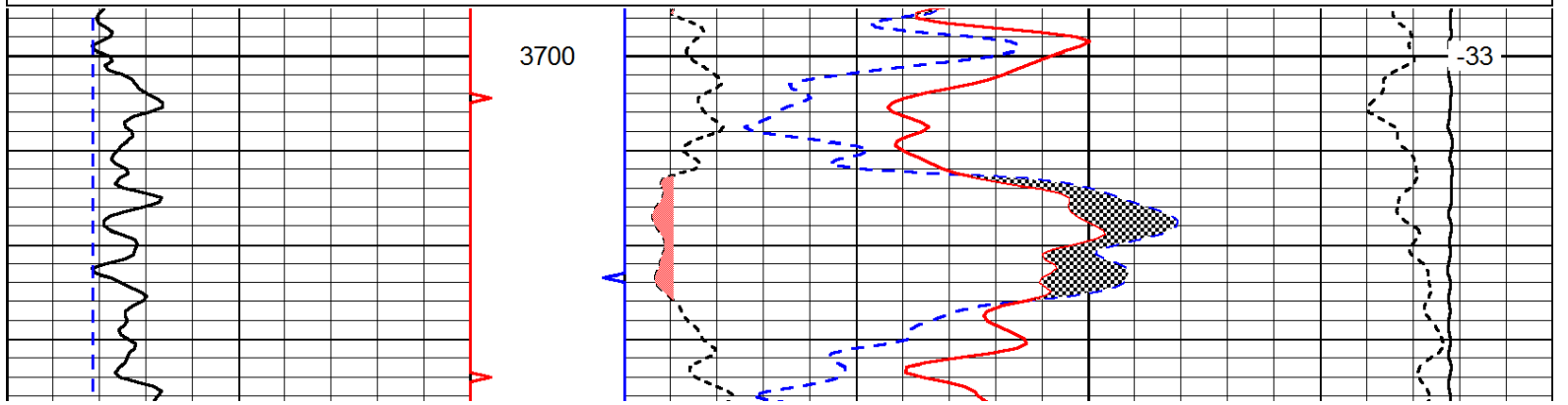
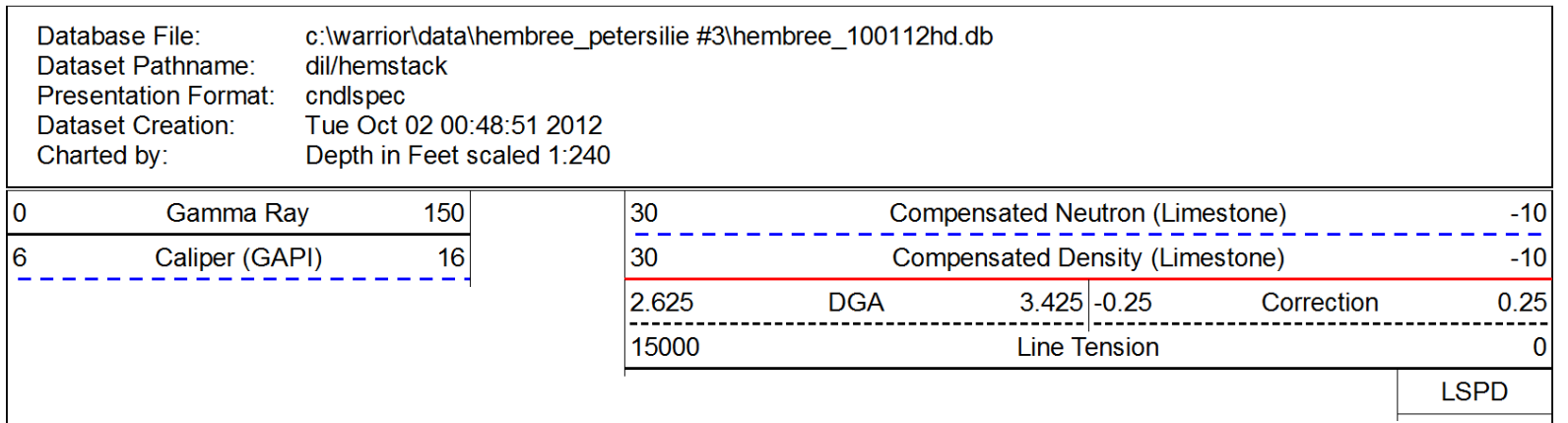
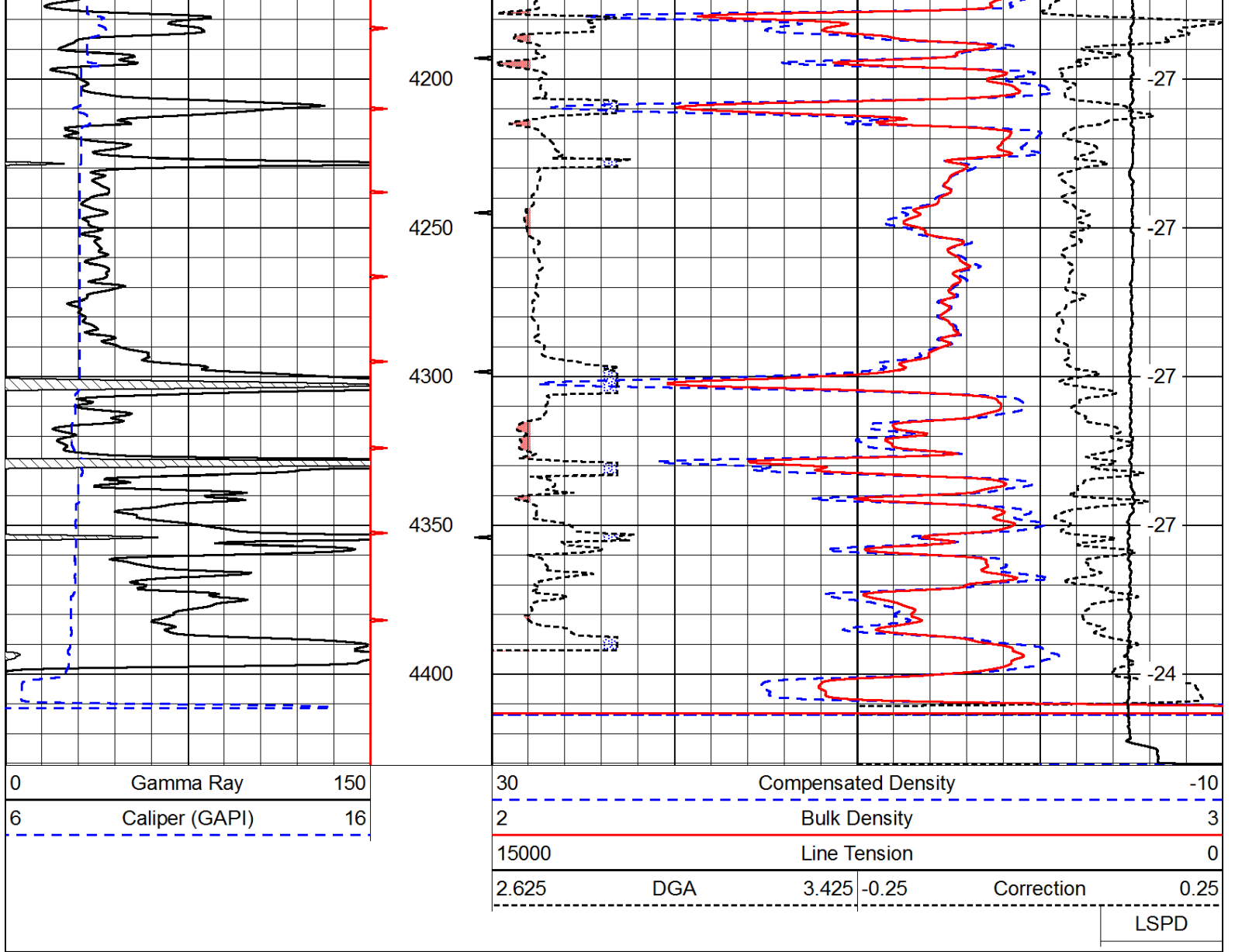
Thank you for using Pioneer Energy Services
 www.pioneer.com
 785 625 3858
 Ness City,
 9 South to 40 Rd, 1 West to R Rd,
 1/4 North, West into

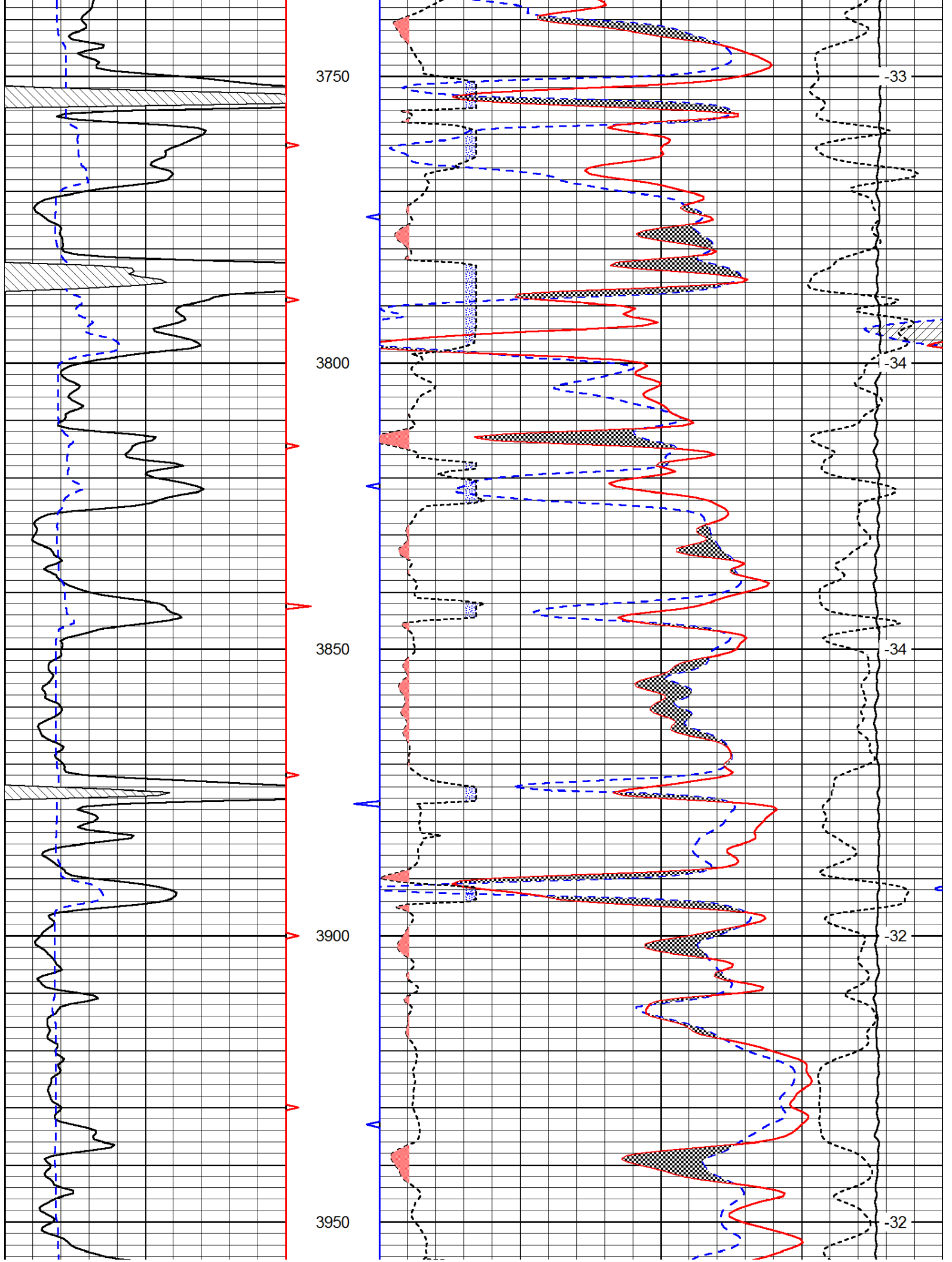
Database File: c:\warrior\data\hembree_petersilie #3\hembree_100112hd.db
 Dataset Pathname: dil/hemstack
 Presentation Format: cdl
 Dataset Creation: Tue Oct 02 00:48:51 2012
 Charted by: Depth in Feet scaled 1:600

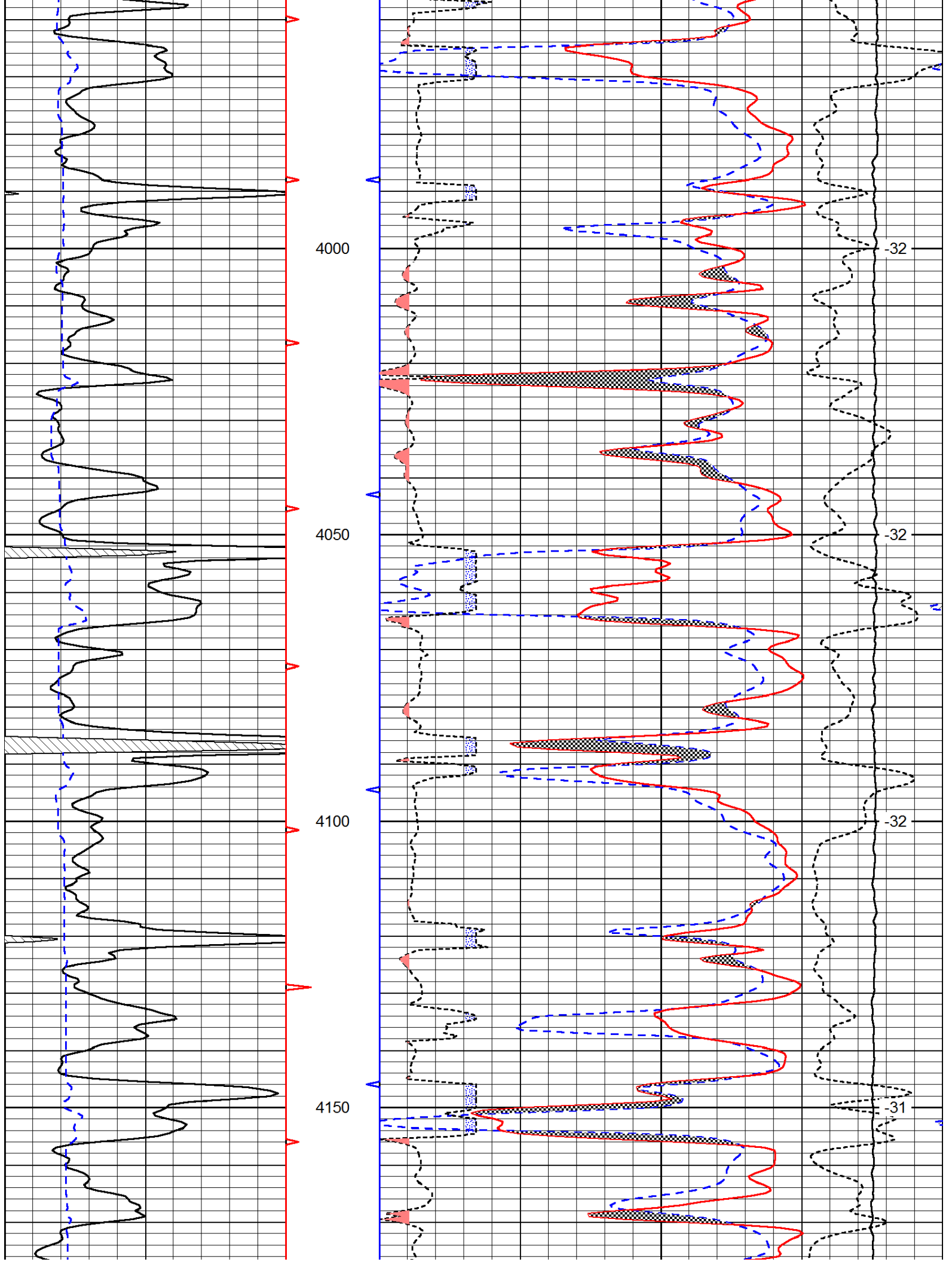
0	Gamma Ray	150
6	Caliper (GAPI)	16

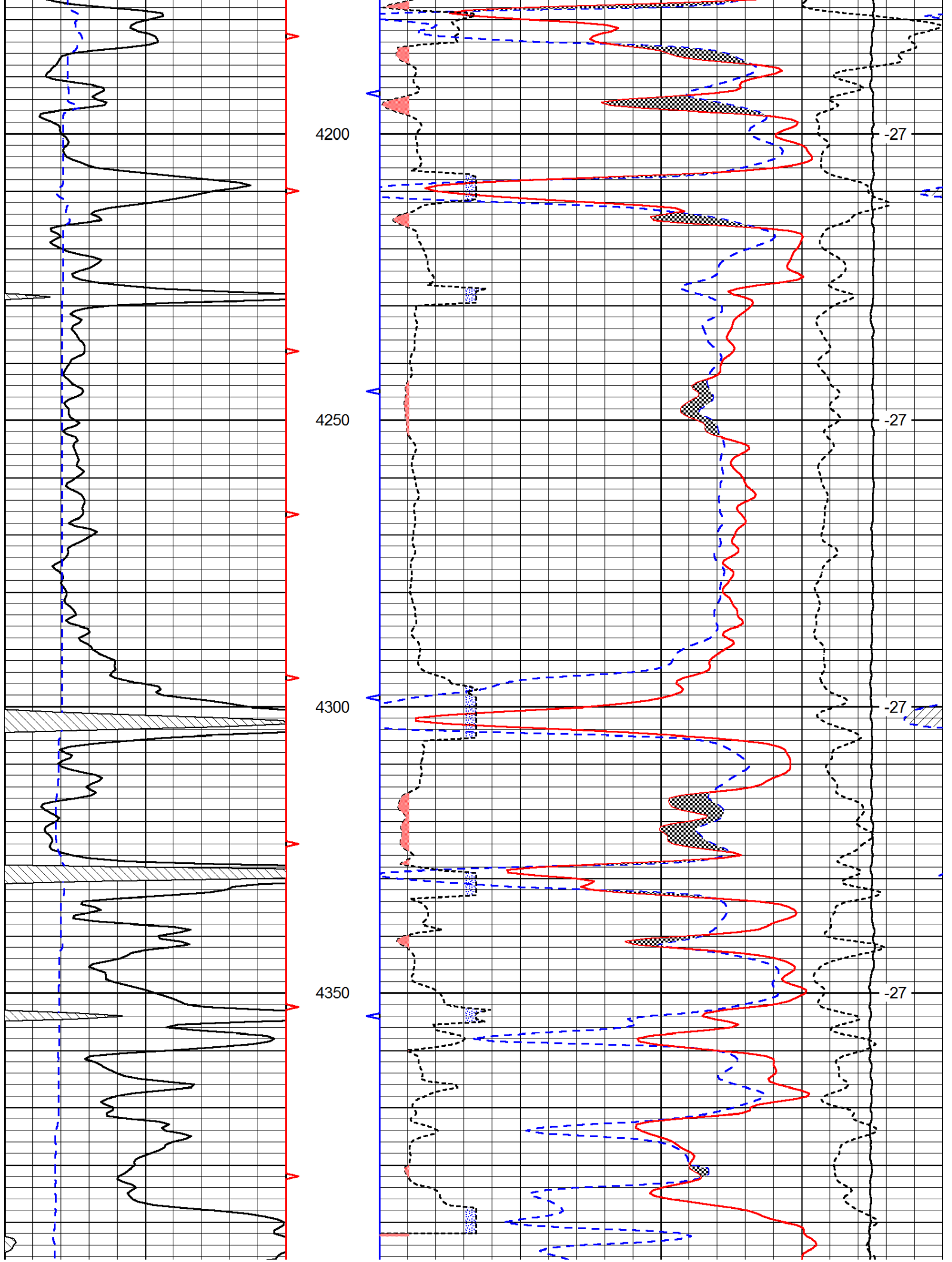
30	Compensated Density		-10
2	Bulk Density		3
15000	Line Tension		0
2.625	DGA	3.425 -0.25	Correction 0.25
LSPD			

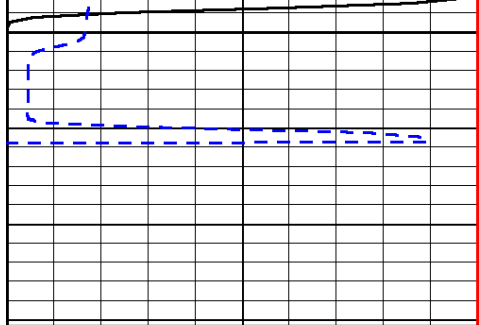




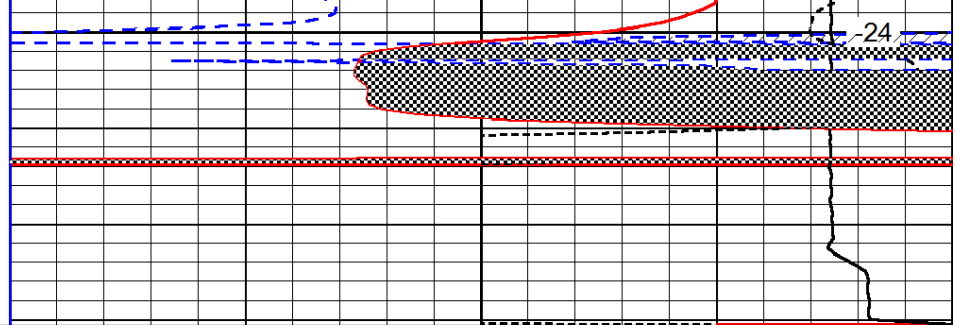








4400



0	Gamma Ray	150
6	Caliper (GAPI)	16

30	Compensated Neutron (Limestone)			-10	
30	Compensated Density (Limestone)			-10	
2.625	DGA	3.425	-0.25	Correction	0.25
15000	Line Tension			0	

LSPD