



Pioneer Energy Services

# Microresistivity Log

15-135-25461-00-00

**Company** Robert F. Hembree  
**Well** Petersilie #3  
**Field** Petersilie Northeast  
**County** Ness **State** Kansas

**Location** 1628' FSL & 330' FEL

**Sec:** 12 **Twp:** 20S **Rge:** 24W

Other Services  
CNL/CDL  
DIL

**Permanent Datum** Ground Level Elevation 2323  
**Log Measured From** Kelly Bushing 7 Ft. Above Perm. Datum  
**Drilling Measured From** Kelly Bushing

**Elevation**  
 K.B. 2330  
 D.F. G.L. 2323

Date	10/1/2012	
Run Number	Two	
Depth Driller	4424	
Depth Logger	4422	
Bottom Logged Interval	4421	
Top Log Interval	3700	
Casing Driller	8.625 @ 217	
Casing Logger	217	
Bit Size	7.875	
Type Fluid in Hole	Chemical	
Salinity, ppm CL	3300	
Density / Viscosity	9.3 48	
pH / Fluid Loss	10.0 9.0	
Source of Sample	Flowline	
Rm @ Meas. Temp	0.85 @ 70	
Rmf @ Meas. Temp	0.64 @ 70	
Rmc @ Meas. Temp	1.15 @ 70	
Source of Rmf / Rmc	Charts	
Rm @ BHT	0.49 @ 122	
Operating Rig Time	4 Hours	
Max Rec. Temp. F	122	
Equipment Number	91	
Location	Hays	
Recorded By	D. Schmidt	
Witnessed By	Kurt Talbott	

<<< Fold Here >>>

All interpretations are opinions based on inferences from electrical or other measurements and we cannot and do not guarantee the accuracy or correctness of any interpretation, and we shall not, except in the case of gross or willful negligence on our part, be liable or responsible for any loss, costs, damages, or expenses incurred or sustained by anyone resulting from any interpretation made by any of our officers, agents or employees. These interpretations are also subject to our general terms and conditions set out in our current Price Schedule.

### Comments

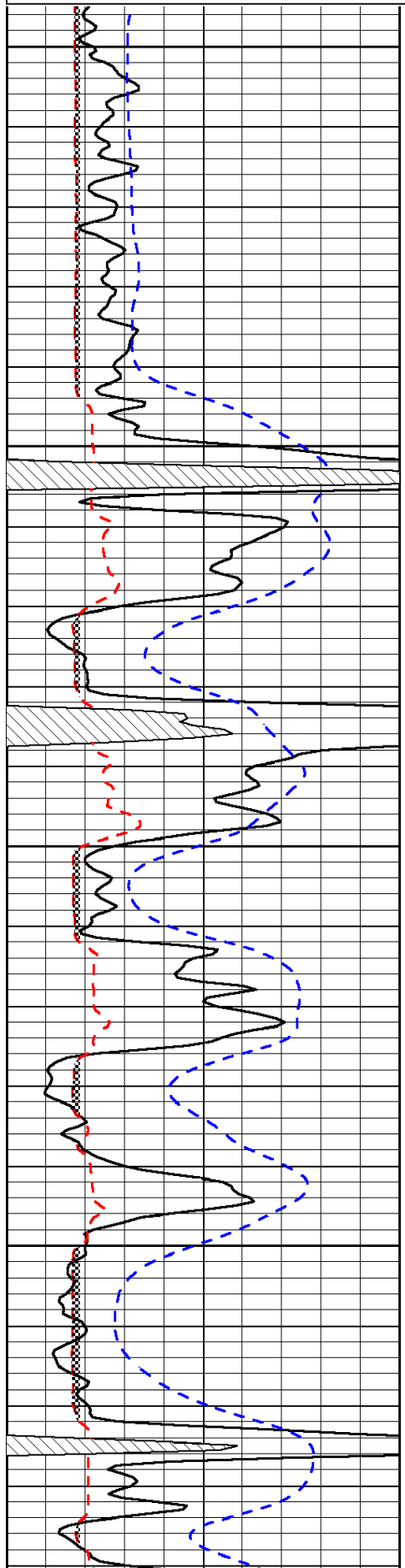
Thank you for using Pioneer Energy Services  
[www.pioneerenergy.com](http://www.pioneerenergy.com)  
 785 625 3858  
 Ness City,  
 9 South to 40 Rd, 1 West to R Rd,  
 1/4 North, West into

Database File: c:\warrior\data\hembree\_petersilie #3\hembree\_100112hd.db  
 Dataset Pathname: dil/hemstack  
 Presentation Format: micro  
 Dataset Creation: Tue Oct 02 00:48:51 2012  
 Charted by: Depth in Feet scaled 1:240

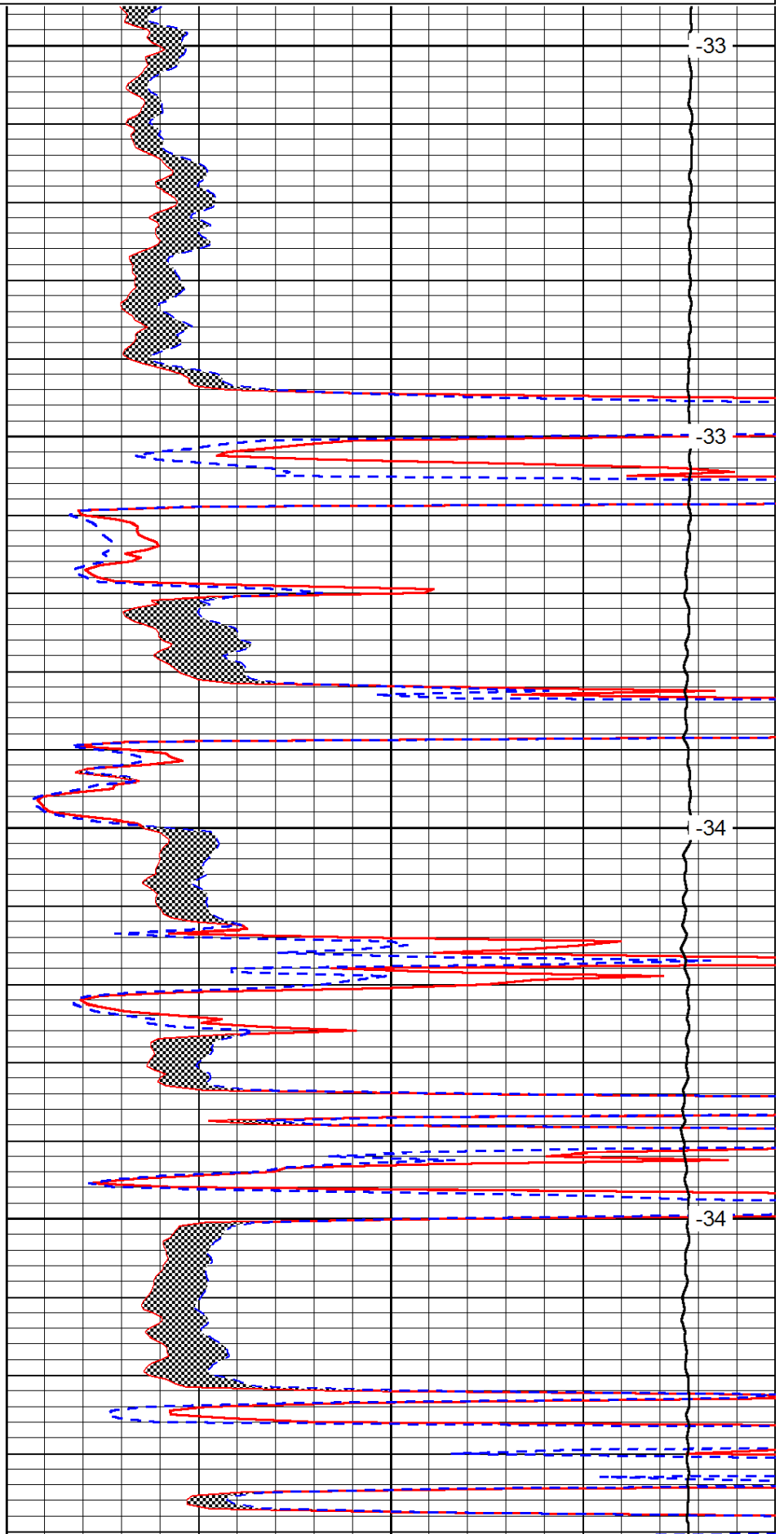
0	Gamma Ray	150
6	Micro Log Caliper (GAPI)	16
-200	SP (mV)	0

0	Micro Inverse 1 X 1	40
0	Micro Normal 2"	40
15000	Line Weight	0

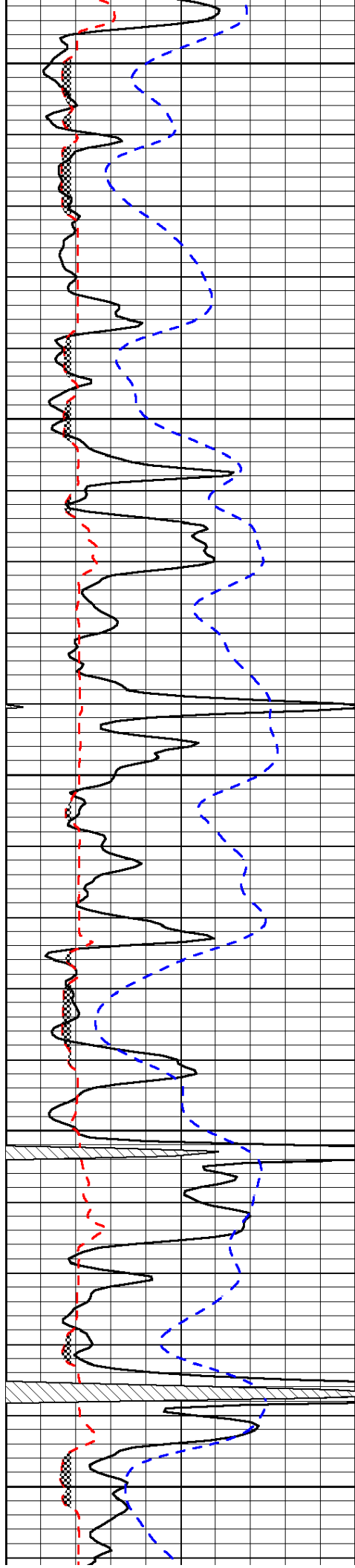
LSPD



3700  
3750  
3800  
3850



-33  
-33  
-34  
-34



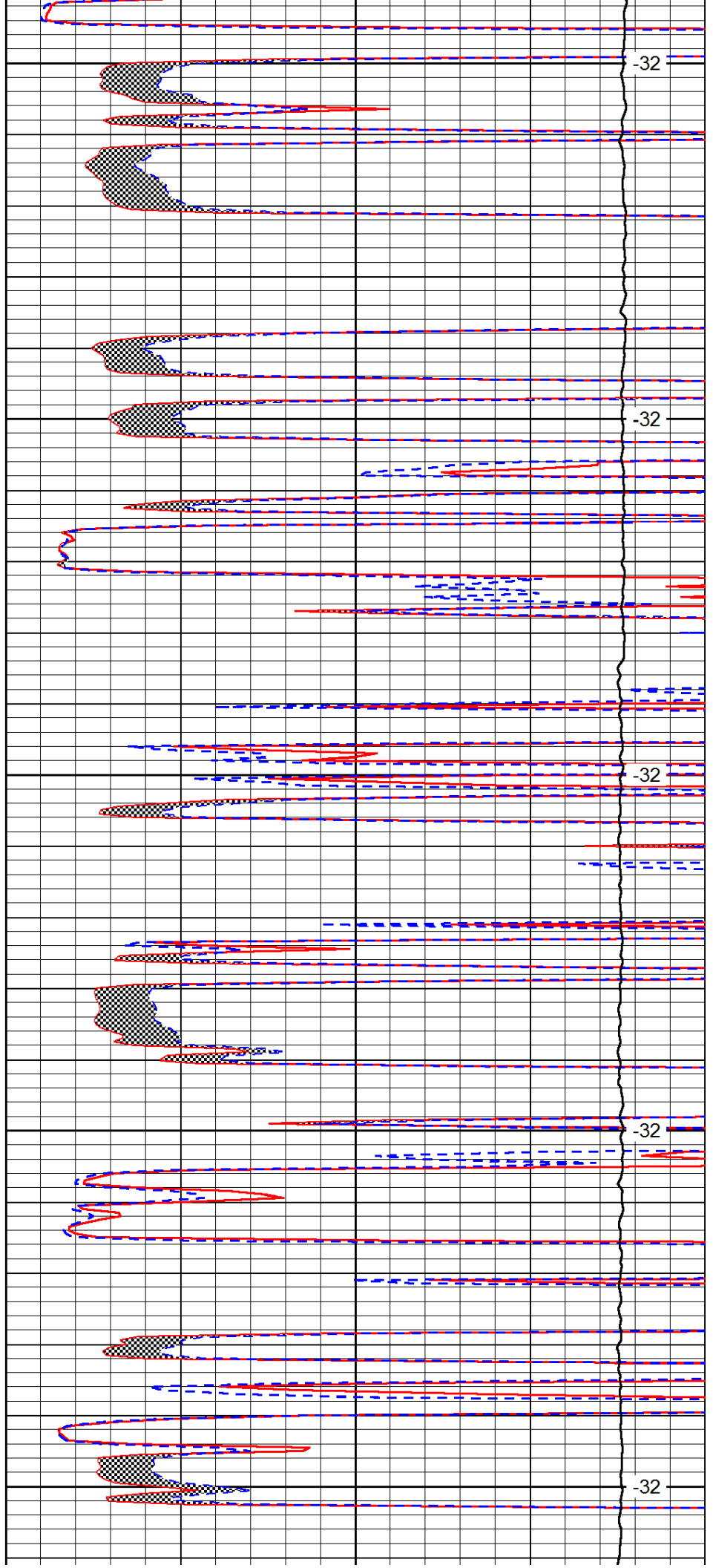
3900

3950

4000

4050

4100



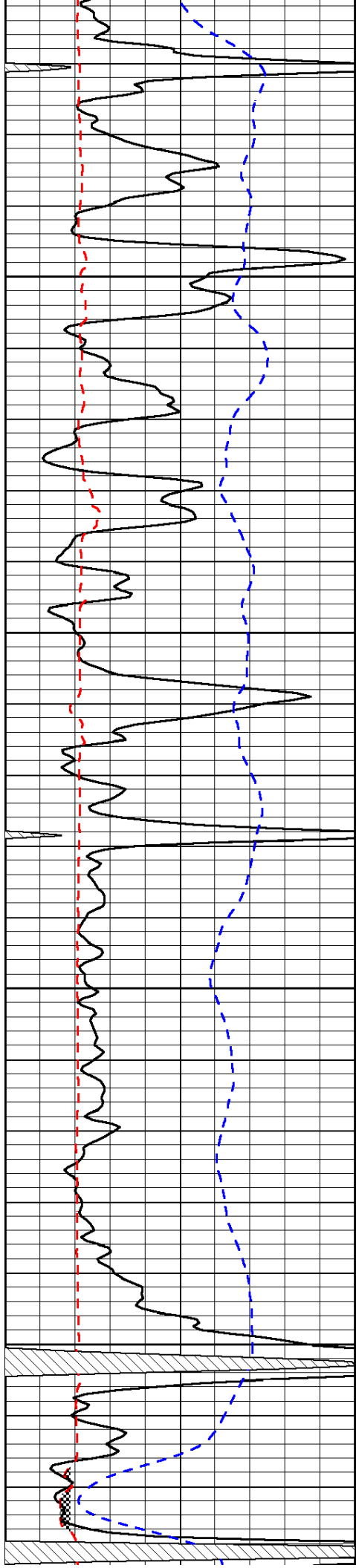
-32

-32

-32

-32

-32

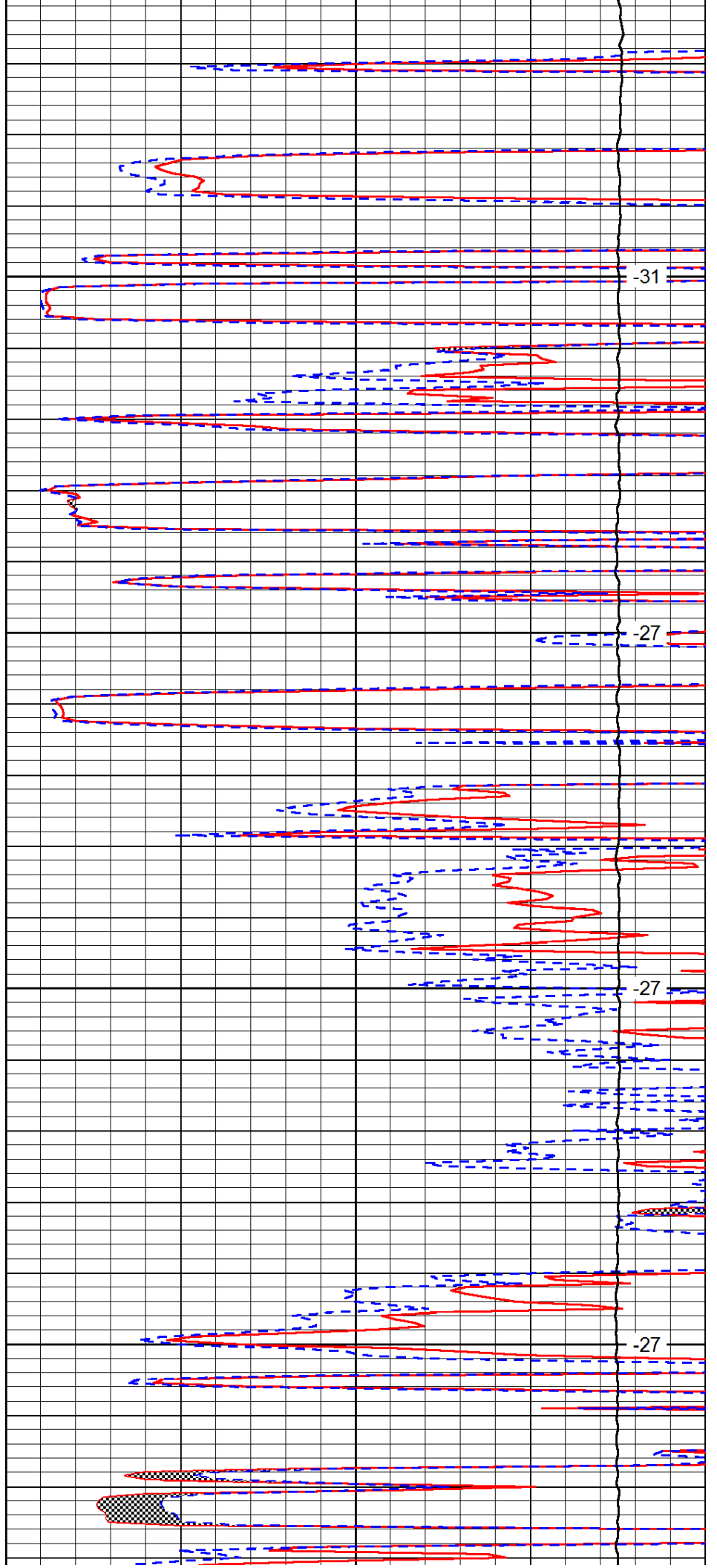


4150

4200

4250

4300

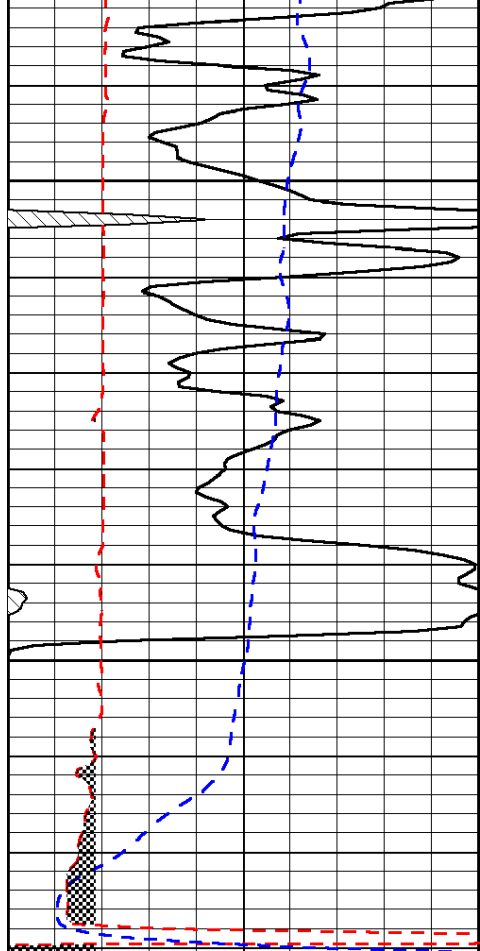


-31

-27

-27

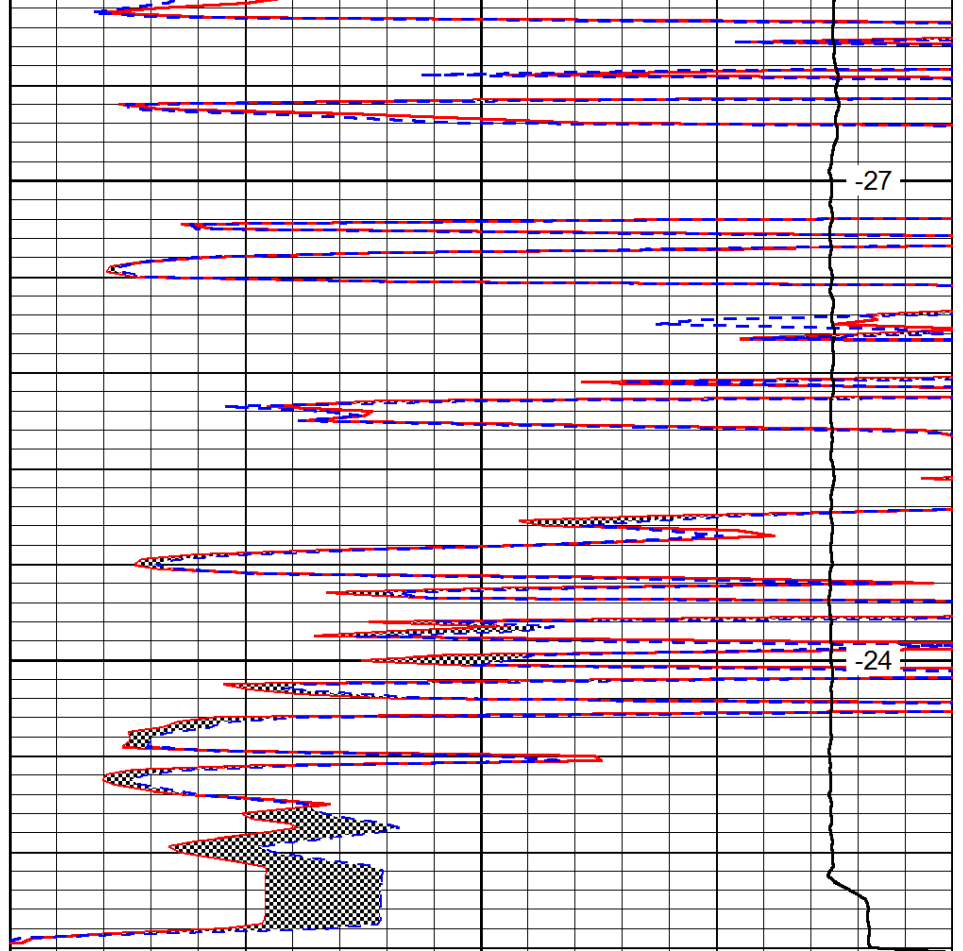
-27



4350

4400

0	Gamma Ray	150
6	Micro Log Caliper (GAPI)	16
-200	SP (mV)	0



-27

-24

0	Micro Inverse 1 X 1	40
0	Micro Normal 2''	40
15000	Line Weight	0

LSPD