



SUPERIOR
Hays,
Kansas

**RADIATION
GUARD
LOG**

Company PALOMINO PETROLEUM, INC.
Well MCKINNIE #1
Field LITTLE BLUE EAST
County NESS
State KANSAS

Company PALOMINO PETROLEUM, INC.
Well MCKINNIE #1
Field LITTLE BLUE EAST
County NESS State KANSAS

Location: 1158' FSL & 475' FWL
API # : 15-135-25467-0000
Other Services
SEC 29 TWP 16S RGE 26W
Permanent Datum GROUND LEVEL Elevation 2652
Log Measured From KELLY BUSHING 10' A.G.L.
Drilling Measured From KELLY BUSHING
Elevation
K.B. 2662
D.F. 2660
G.L. 2652

Date	9/4/12		
Run Number	ONE		
Depth Driller	4670		
Depth Logger	4669		
Bottom Logged Interval	4667		
Top Log Interval	00		
Casing Driller	8 5/8" @ 223		
Casing Logger	222		
Bit Size	7 7/8		
Type Fluid in Hole	CHEMICAL MUD	CHLORIDES: 1600 PPM	
Density / Viscosity	9.3/60		
pH / Fluid Loss	9.5/12.0		
Source of Sample	FLOWLINE		
Rim @ Meas. Temp	1.1 @ 95F		
Rmf @ Meas. Temp	.82 @ 95F		
Rmc @ Meas. Temp	1.32 @ 95F		
Source of Rmf / Rmc	MEASURED		
Rim @ BHT	.85 @ 122F		
Time Circulation Stopped	2 HOURS		
Time Logger on Bottom			
Maximum Recorded Temperature	122F		
Equipment Number	680		
Location	HAYS, KS.		
Recorded By	JASON CAPPELLUCCI		
Witnessed By	RYAN SEIB		

<<< Fold Here >>>

All interpretations are opinions based on inferences from electrical or other measurements and we cannot and do not guarantee the accuracy or correctness of any interpretation, and we shall not, except in the case of gross or willful negligence on our part, be liable or responsible for any loss, costs, damages, or expenses incurred or sustained by anyone resulting from any interpretation made by any of our officers, agents or employees. These interpretations are also subject to our general terms and conditions set out in our current Price Schedule.

Comments

THANK YOU FOR USING SUPERIOR WELL SERVICE (785) 628-6395
DIRECTIONS
UTICA, KS. - 3 W. TO RD. A - 1 S. - E. INTO

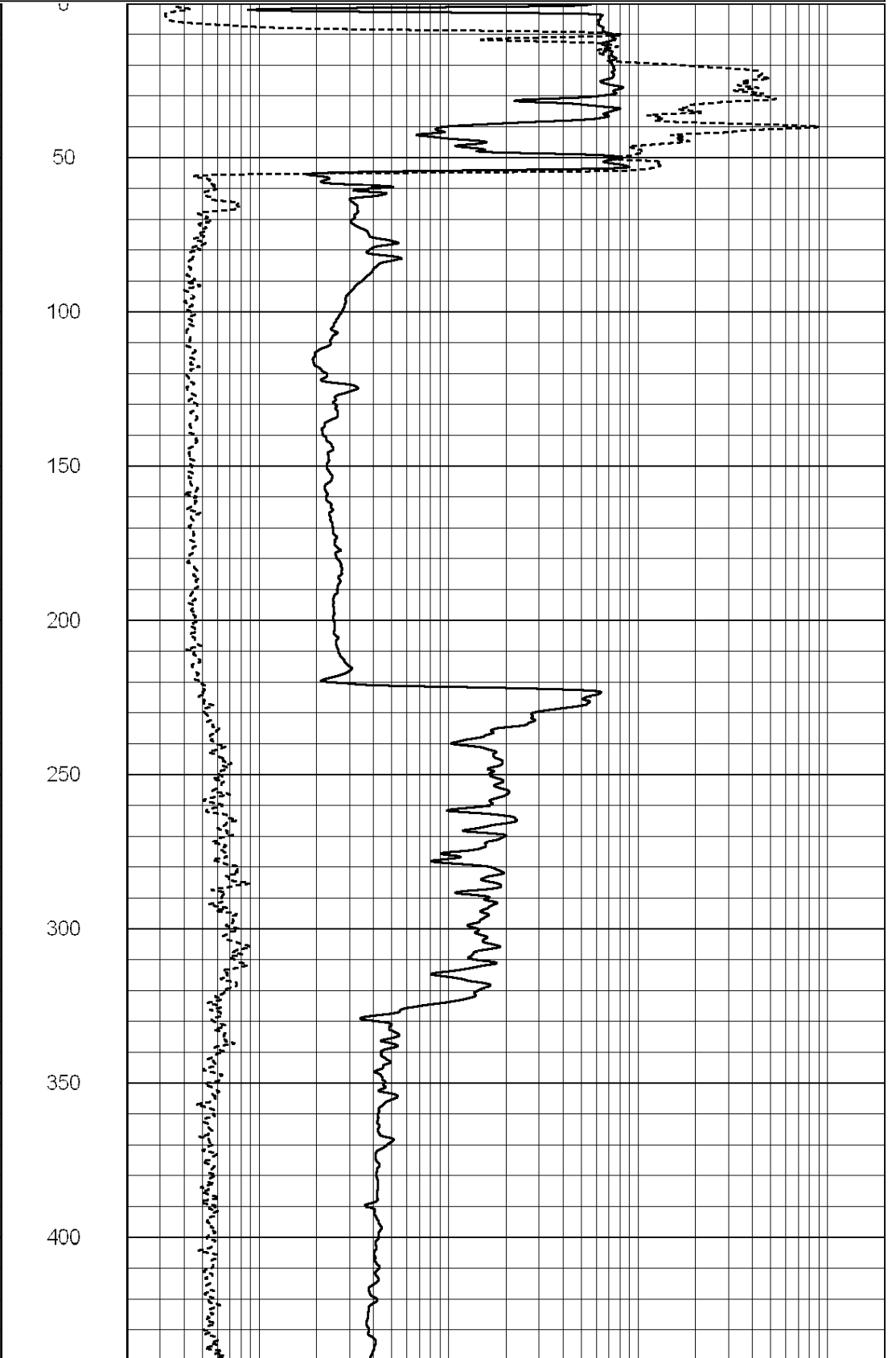
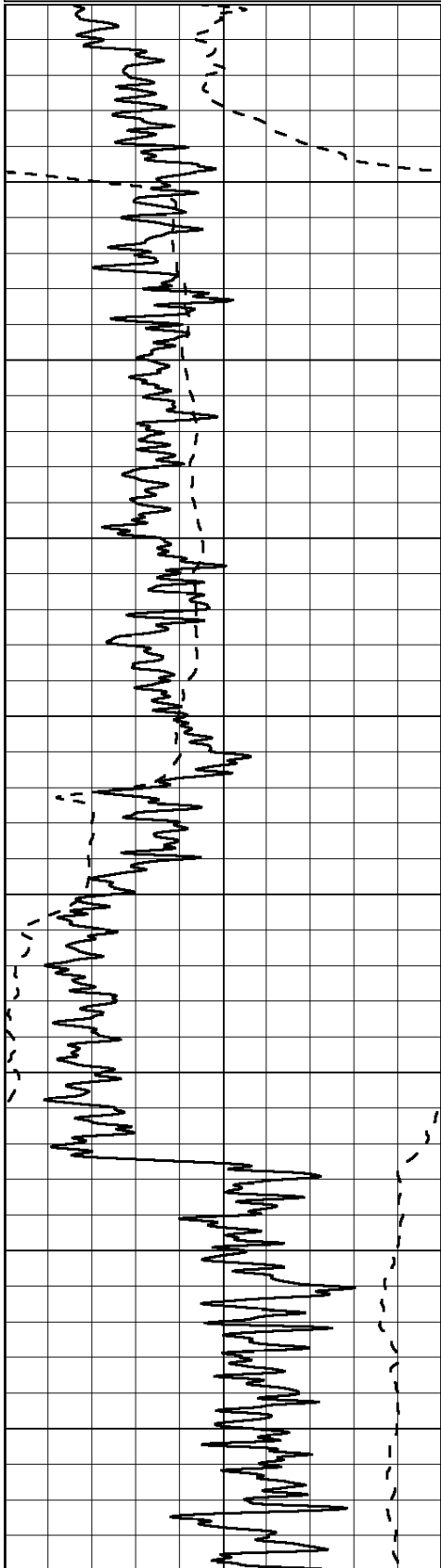


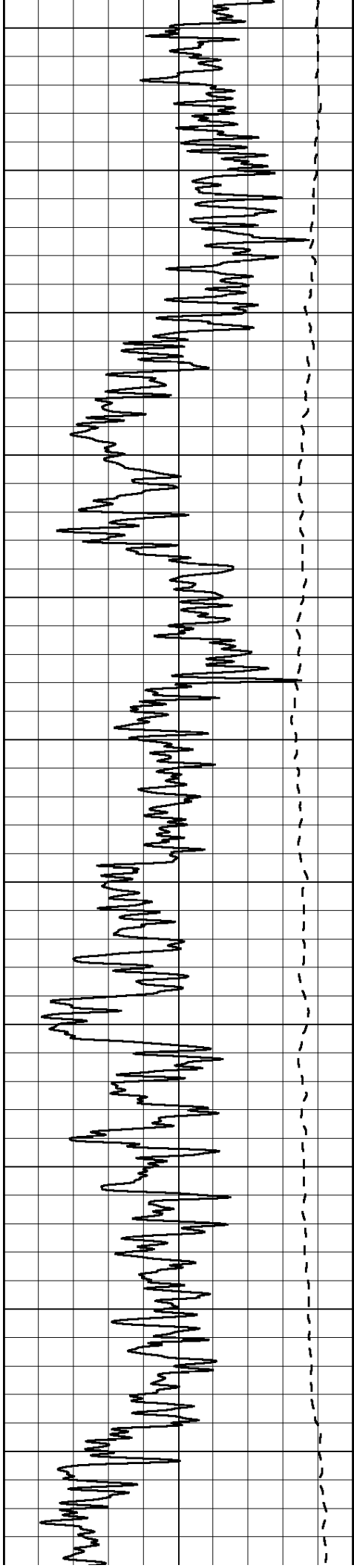
SUPERIOR
Hays,
Kansas

MAIN SECTION

Database File: 009596rag.db
 Dataset Pathname: pass3.2
 Presentation Format: rag2
 Dataset Creation: Tue Sep 04 15:03:14 2012 by Calc Open-Cased 090629
 Charted by: Depth in Feet scaled 1:600

0	GAMMA RAY (GAPI)	150	ABHV (ft3)	0.2	GUARD (Ohm-m)	2000
-100	SP (mV)	100		0	NEUTRON (NAPI)	1000
-----			TBHV (ft3)	-----		





450

500

550

600

650

700

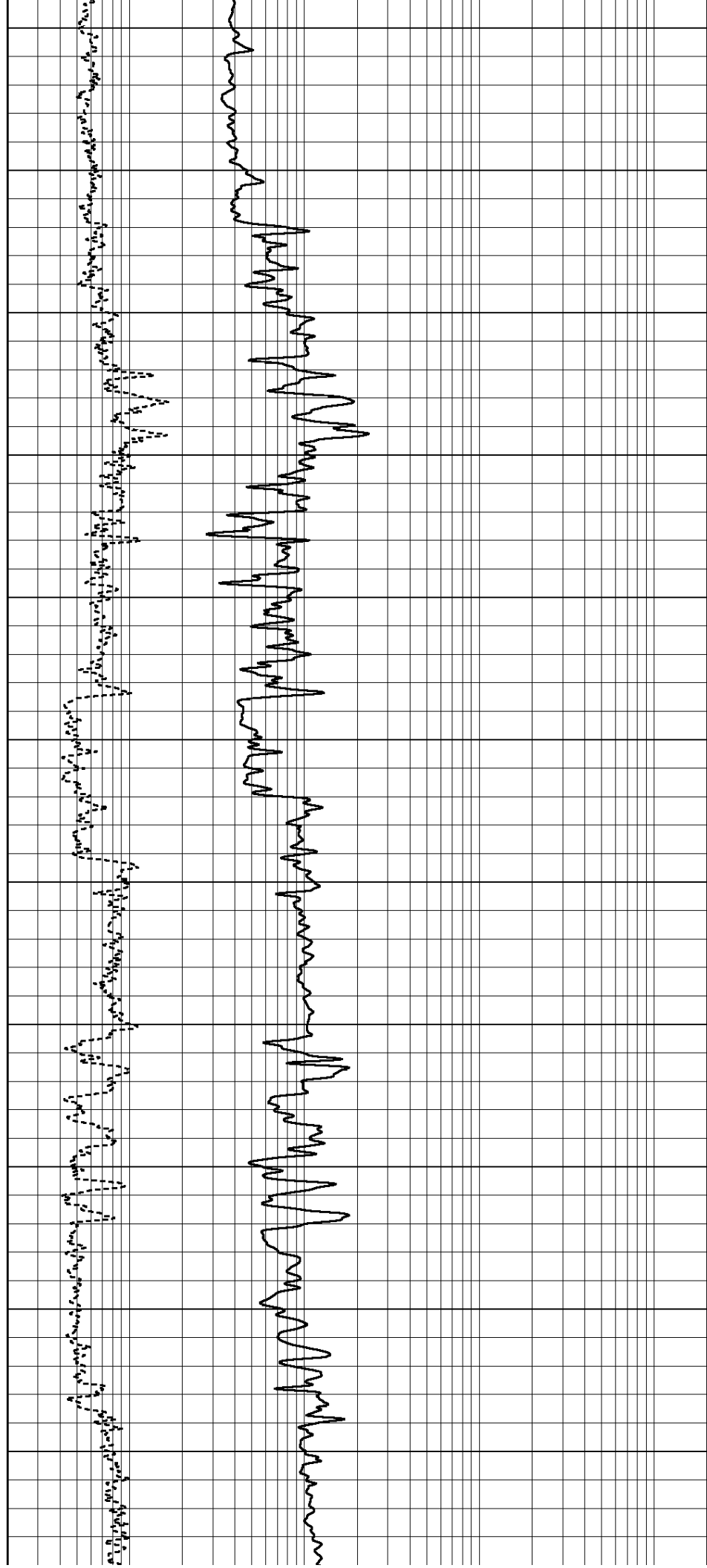
750

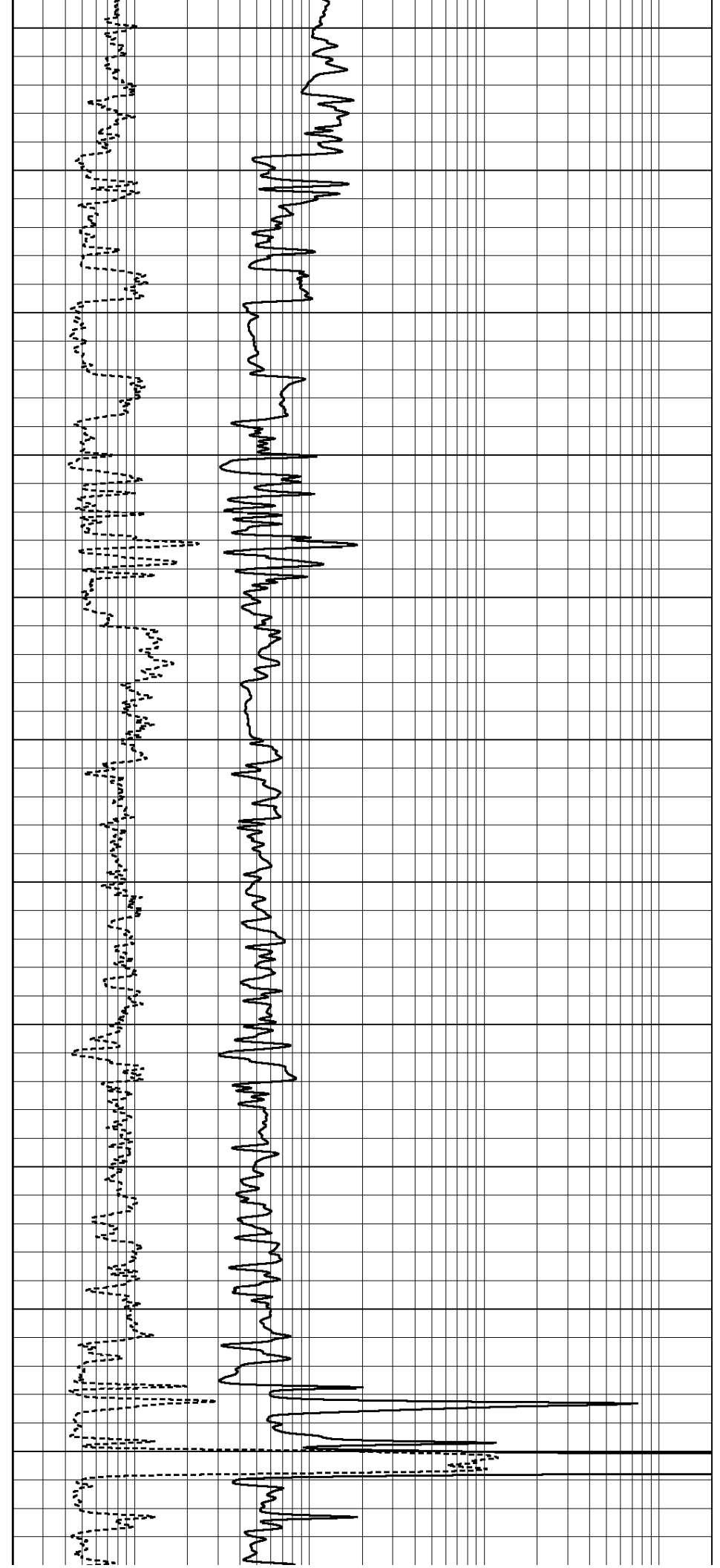
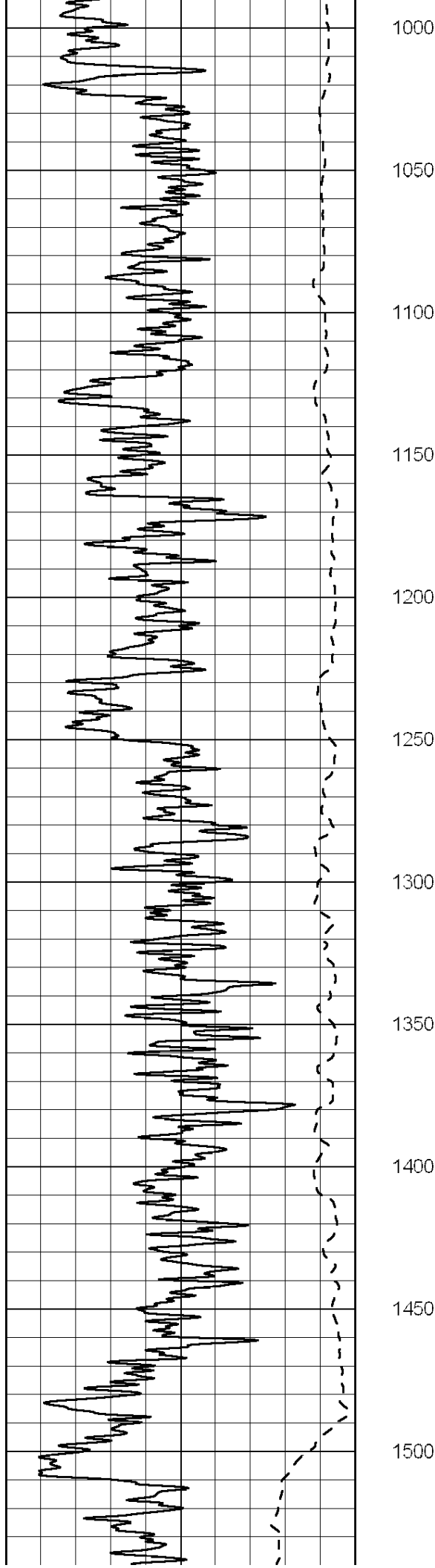
800

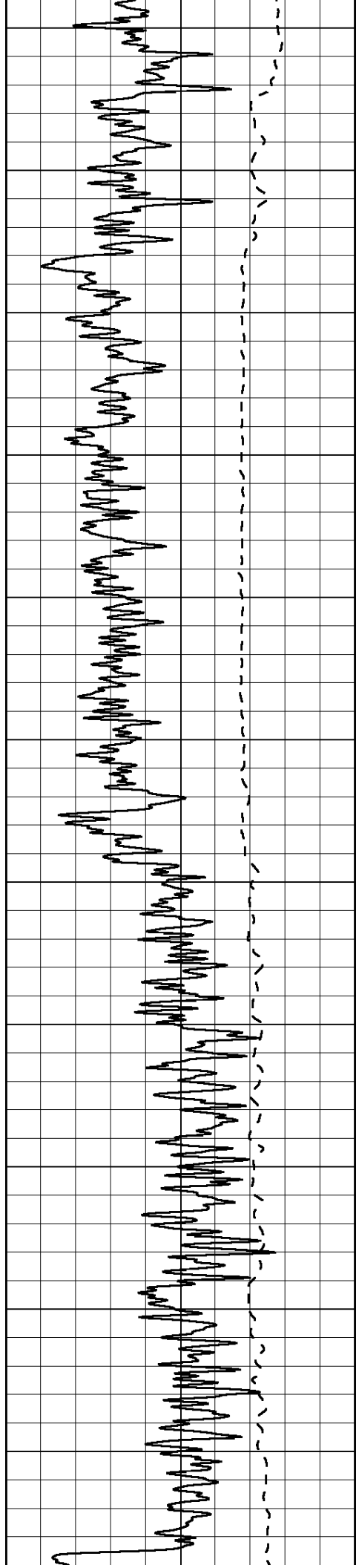
850

900

950







1550

1600

1650

1700

1750

1800

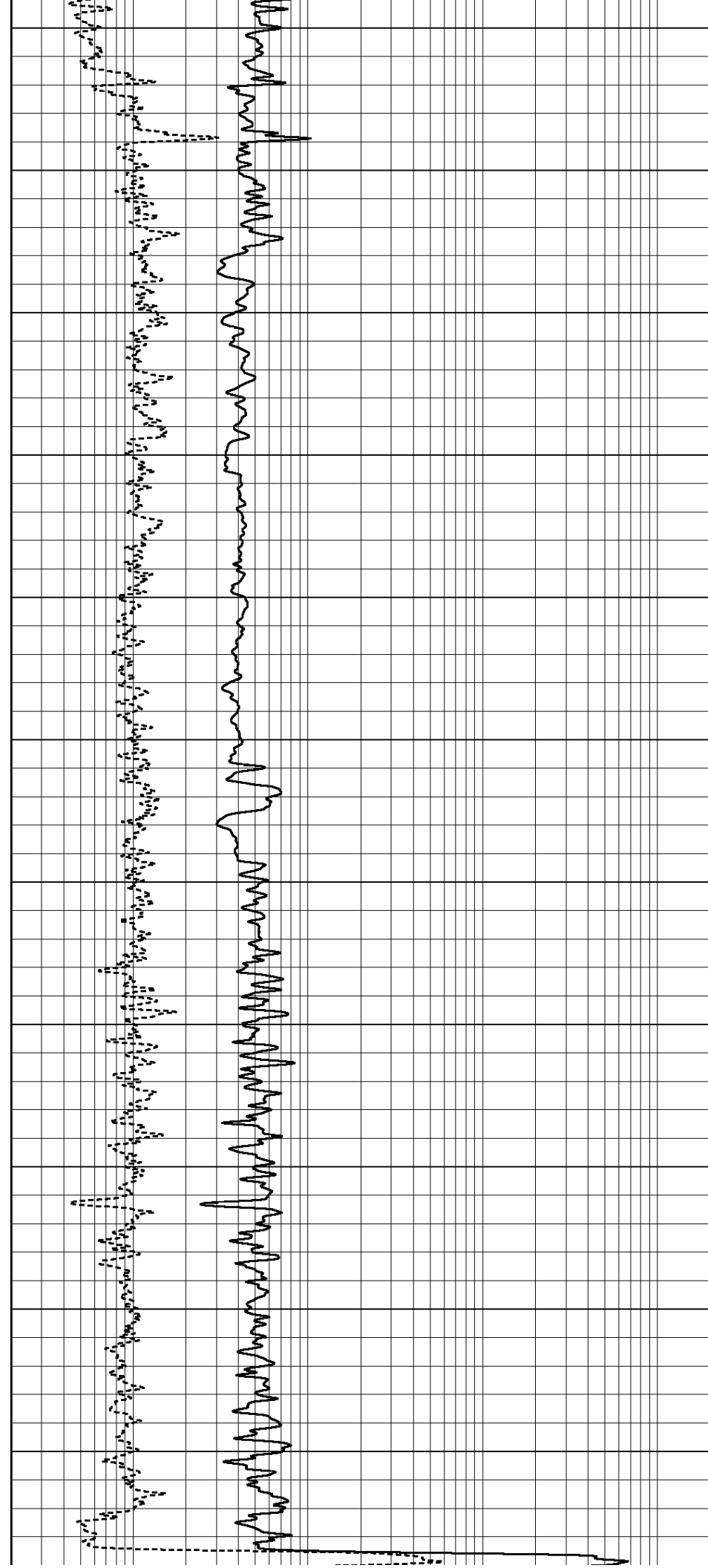
1850

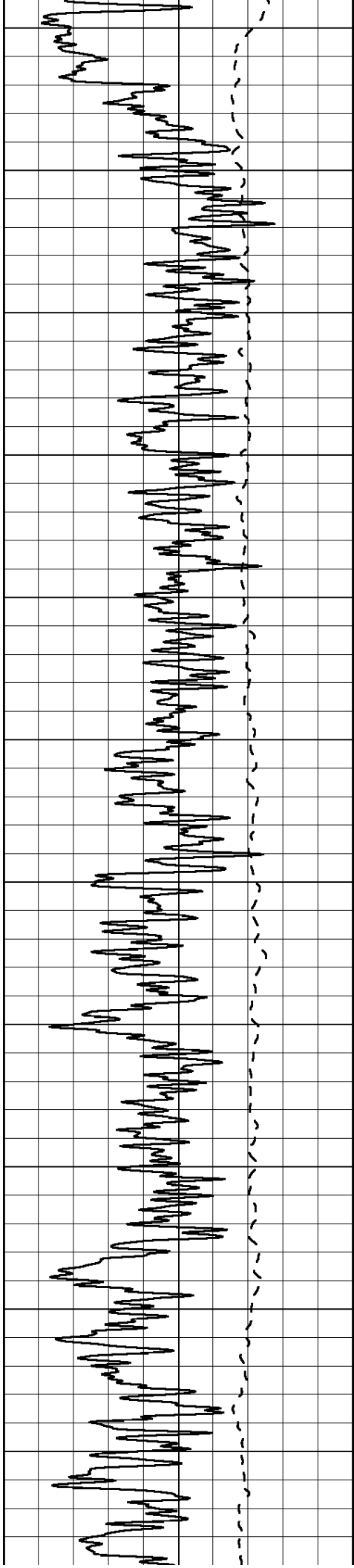
1900

1950

2000

2050





2100

2150

2200

2250

2300

2350

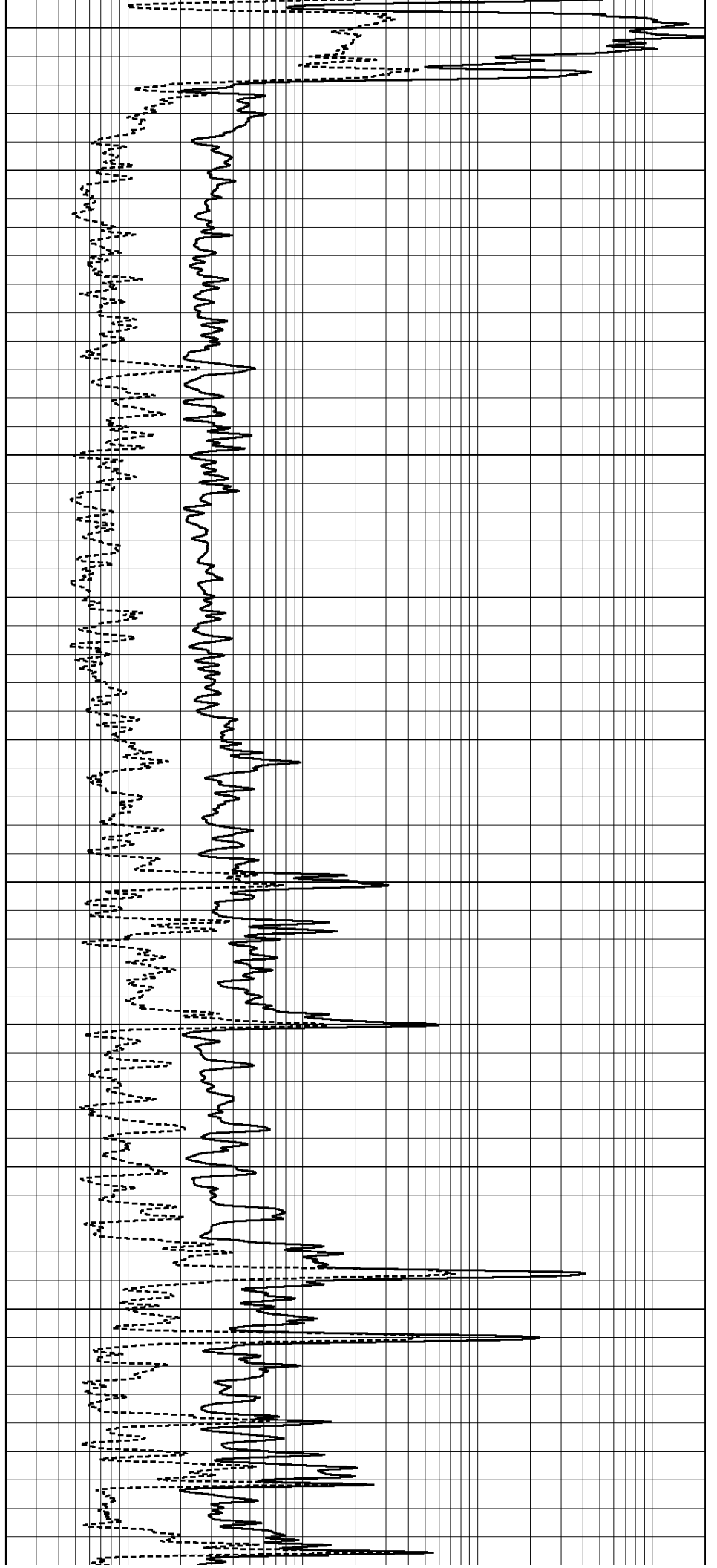
2400

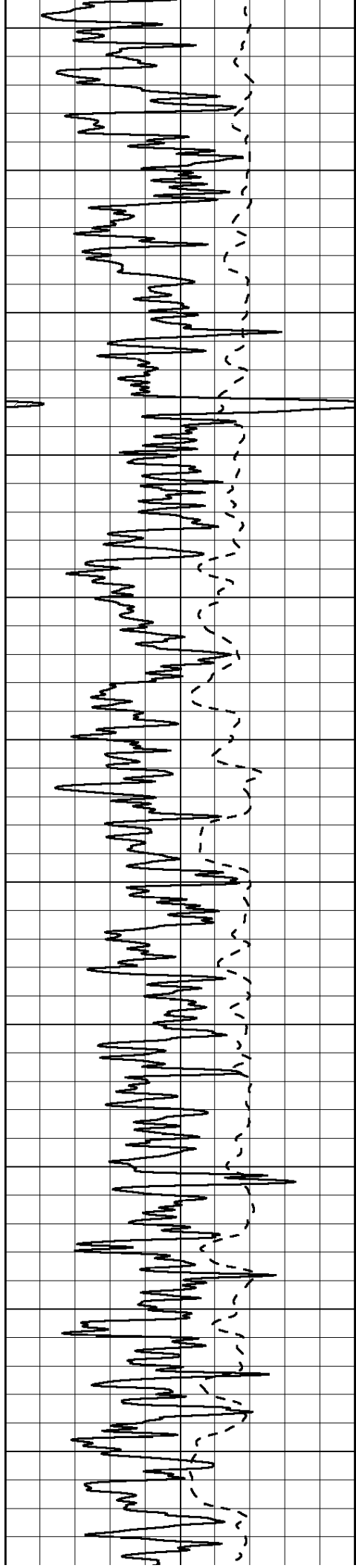
2450

2500

2550

2600





2650

2700

2750

2800

2850

2900

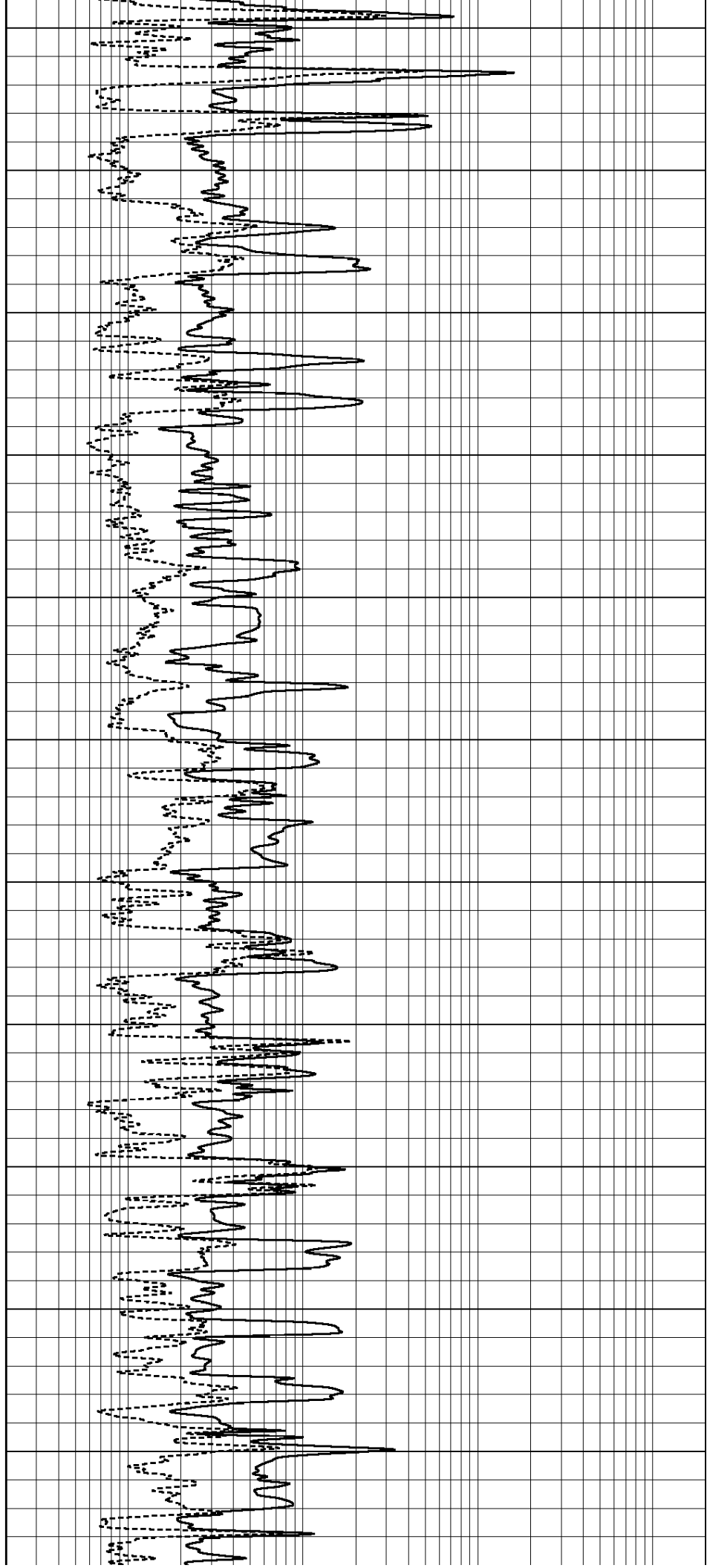
2950

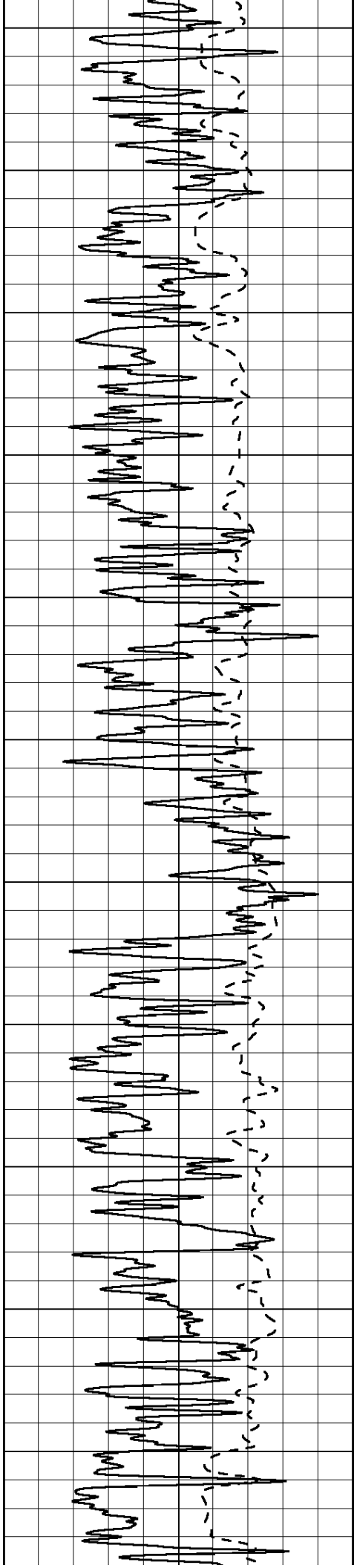
3000

3050

3100

3150





3200

3250

3300

3350

3400

3450

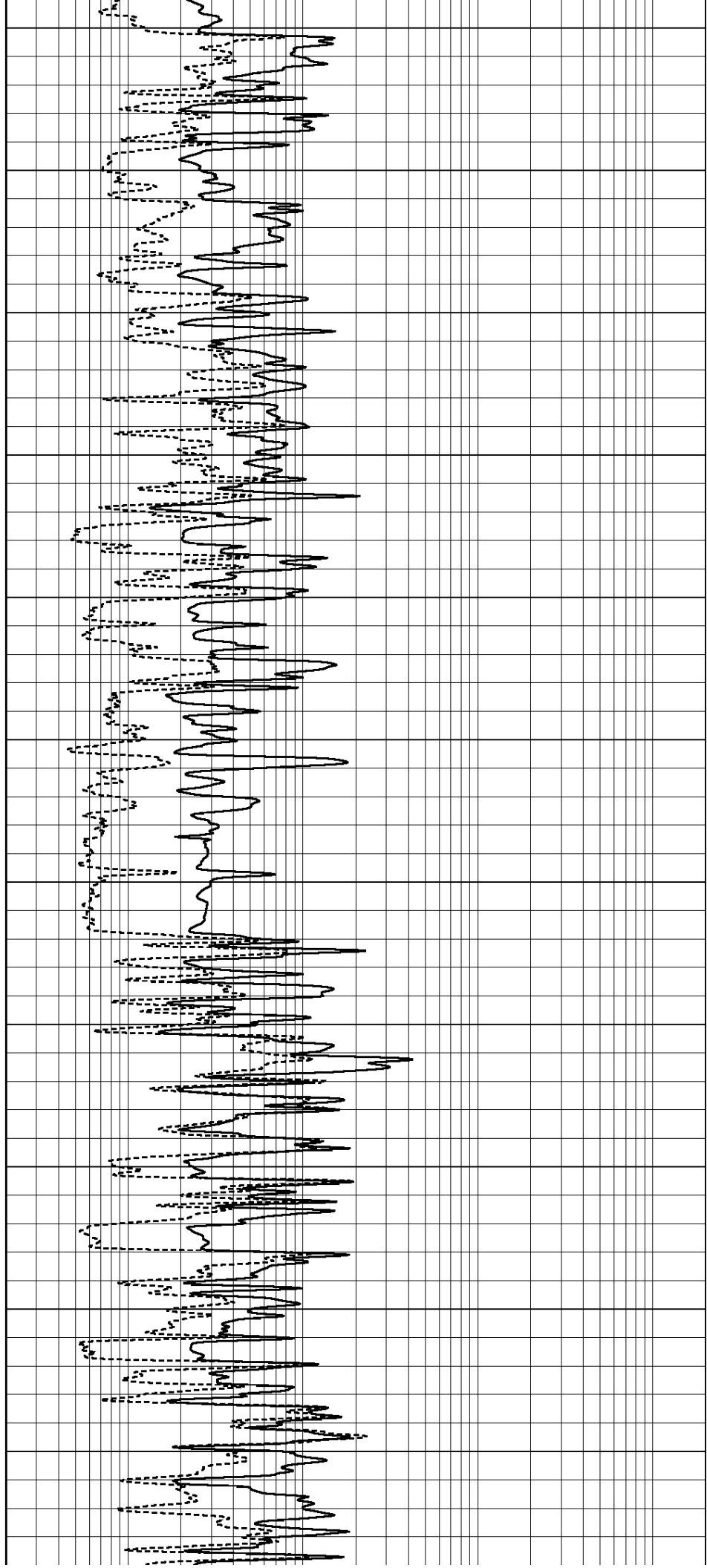
3500

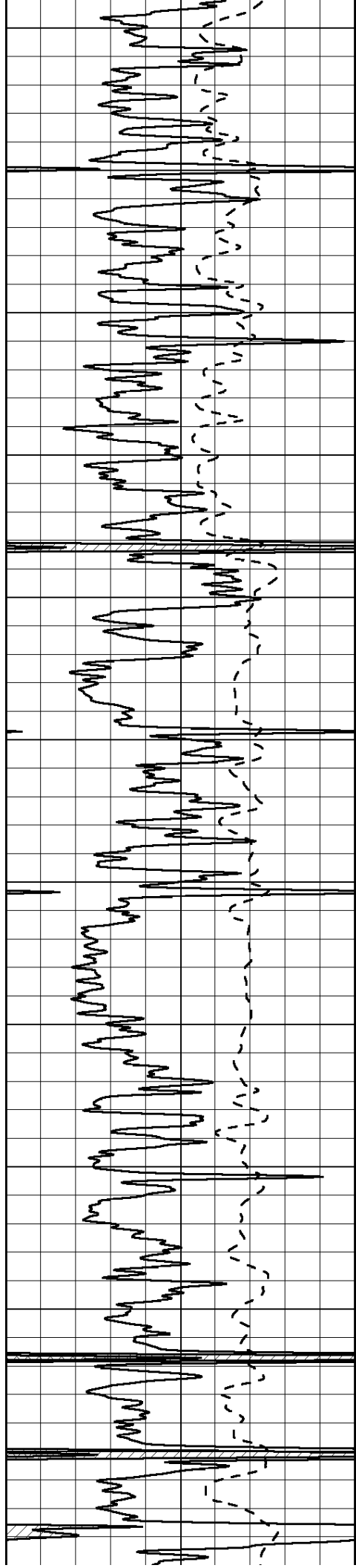
3550

3600

3650

3700





3750

3800

3850

3900

3950

4000

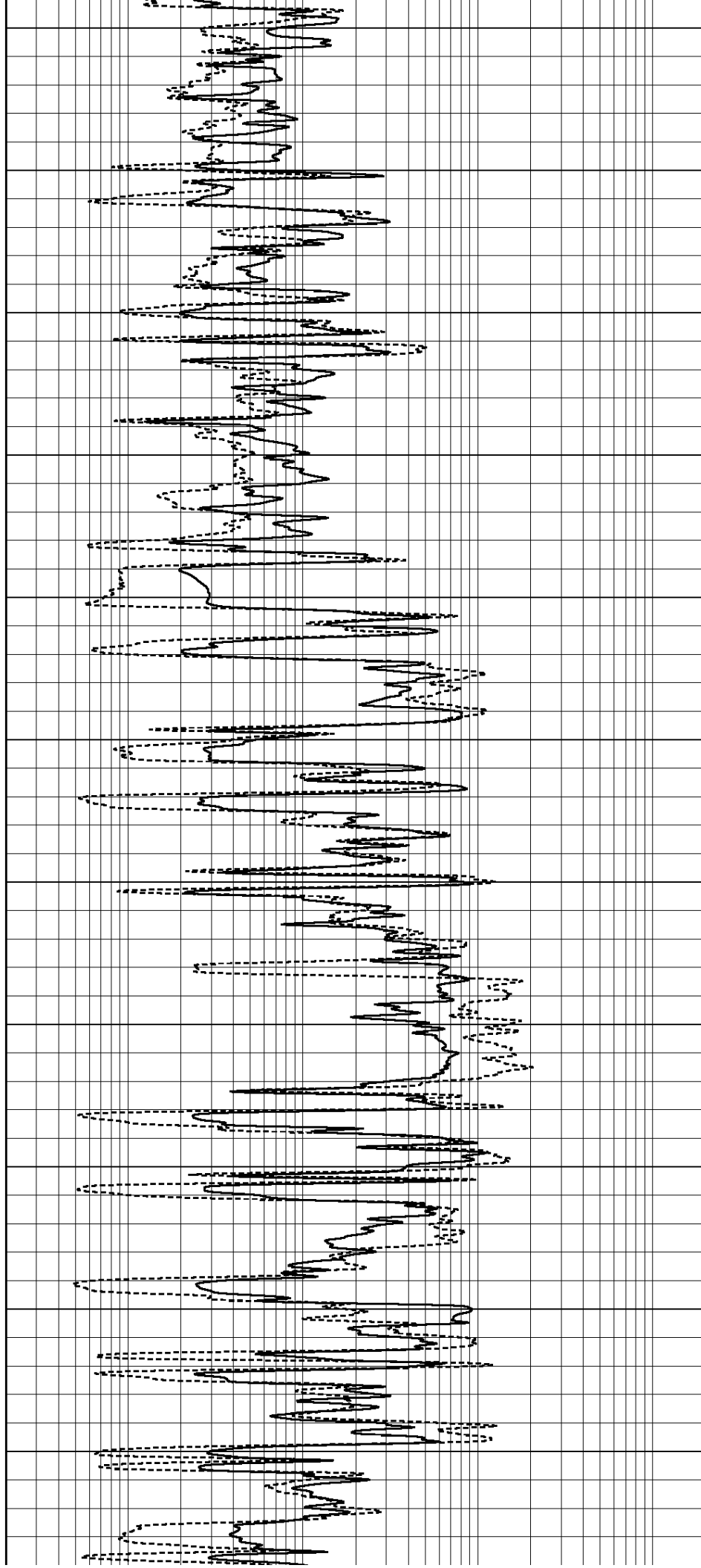
4050

4100

4150

4200

4250



3750

3800

3850

3900

3950

4000

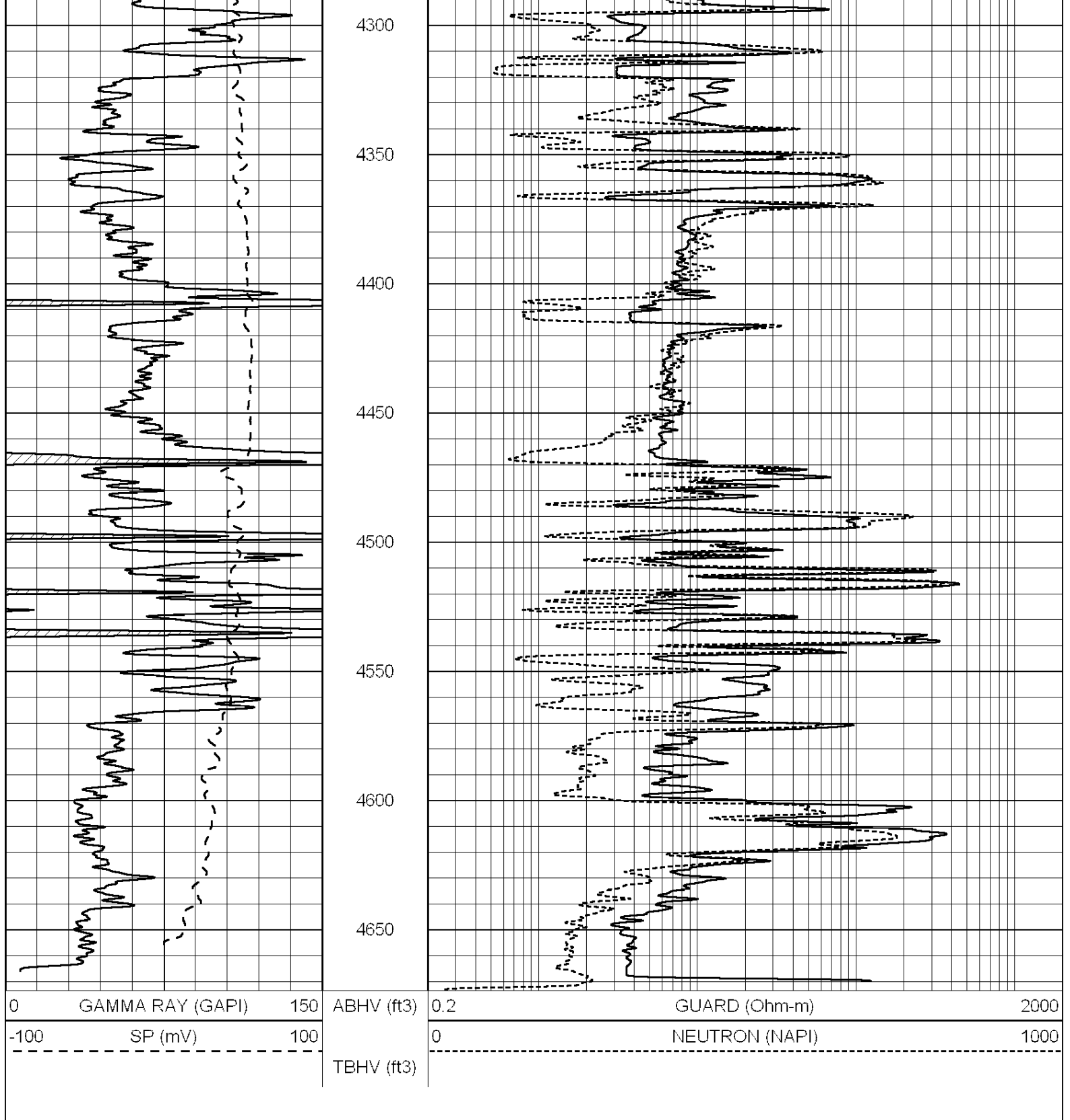
4050

4100

4150

4200

4250

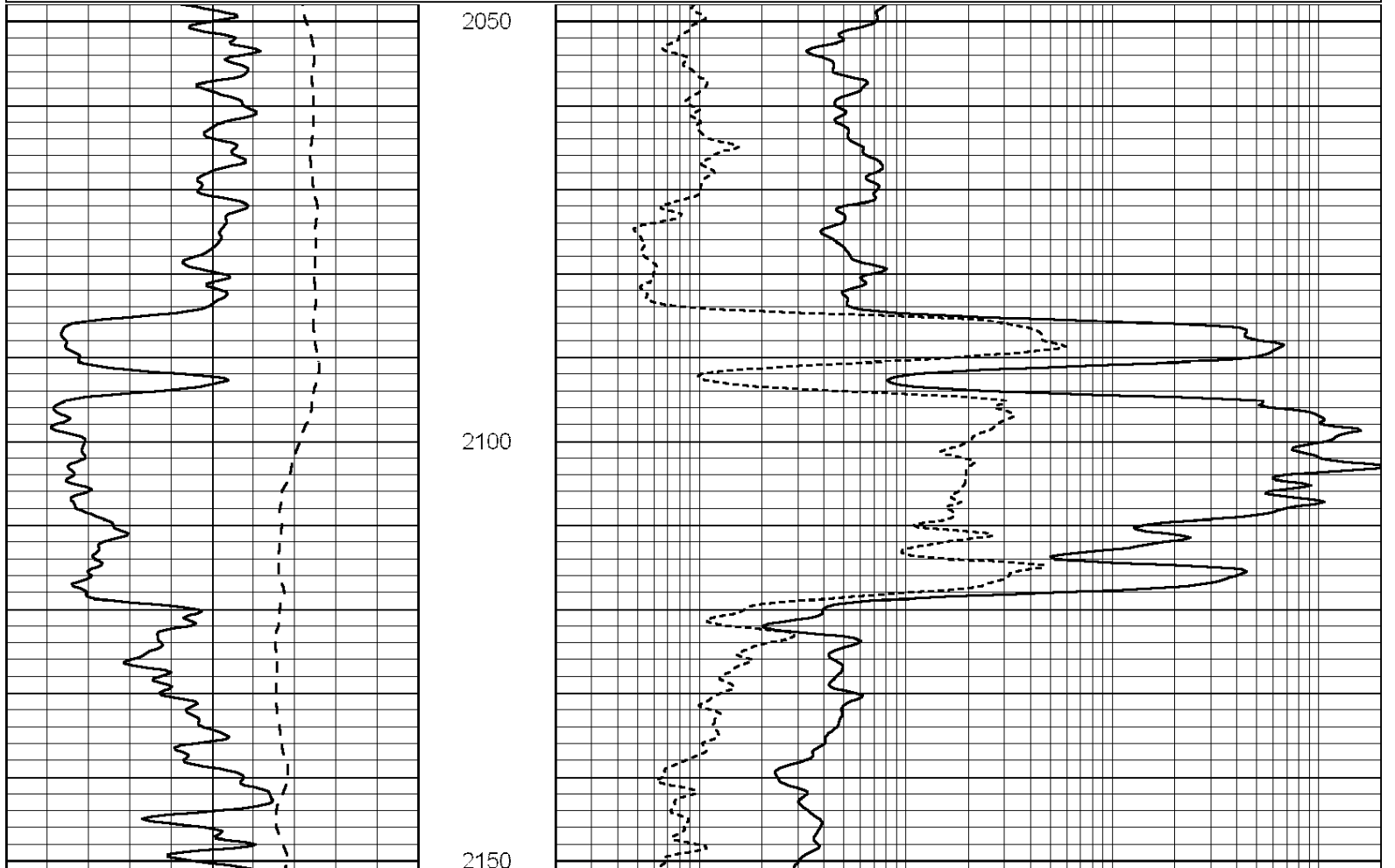


SUPERIOR
Hays,
Kansas

ANHYDRITE

Database File: 009596rag.db
 Dataset Pathname: pass3.3
 Presentation Format: rag2
 Dataset Creation: Tue Sep 04 14:31:57 2012 by Calc Open-Cased 090629
 Charted by: Depth in Feet scaled 1:240

0	GAMMA RAY (GAPI)	150	ABHV (ft3)	0.2	GUARD (Ohm-m)	2000
-100	SP (mV)	100		0	NEUTRON (NAPI)	1000
-----			TBHV (ft3)	-----		



0	GAMMA RAY (GAPI)	150	ABHV (ft3)	0.2	GUARD (Ohm-m)	2000
-100	SP (mV)	100		0	NEUTRON (NAPI)	1000
-----			TBHV (ft3)	-----		



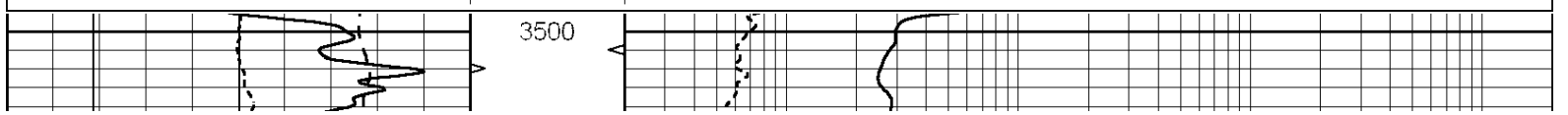
SUPERIOR
WELL SERVICES

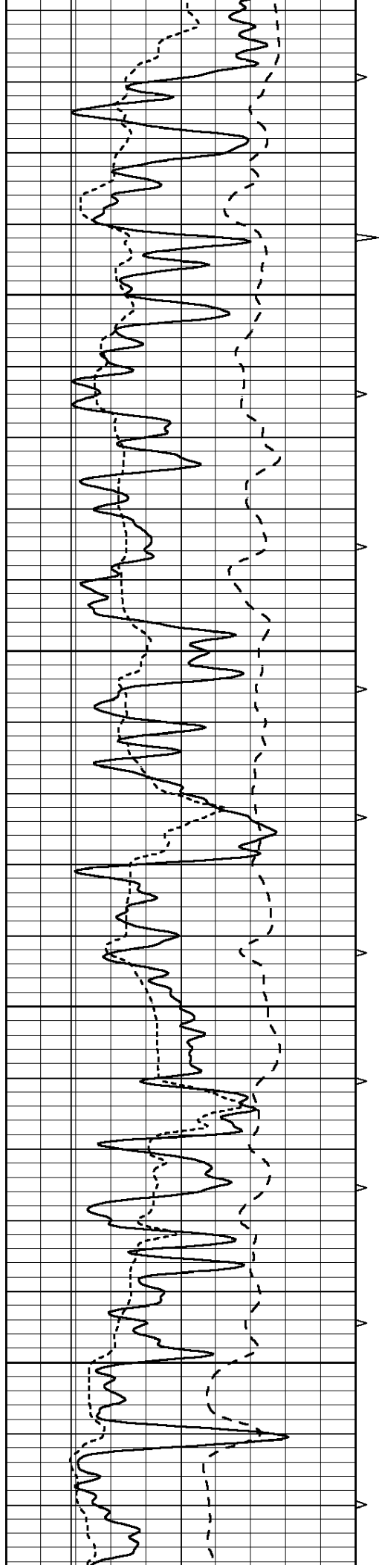
SUPERIOR
Hays,
Kansas

MAIN SECTION

Database File: 009596rag.db
 Dataset Pathname: pass3.1
 Presentation Format: rag
 Dataset Creation: Tue Sep 04 14:14:43 2012 by Calc Open-Cased 090629
 Charted by: Depth in Feet scaled 1:240

0	GAMMA RAY (GAPI)	150	ABHV	0.2	GUARD (Ohm-m)	2000
-100	SP (mV)	100	10 (ft3)	0 0	NEUTRON (NAPI)	1000
-----			TBHV	-----		
6	CALIPER (in)	16	0 (ft3) 10			



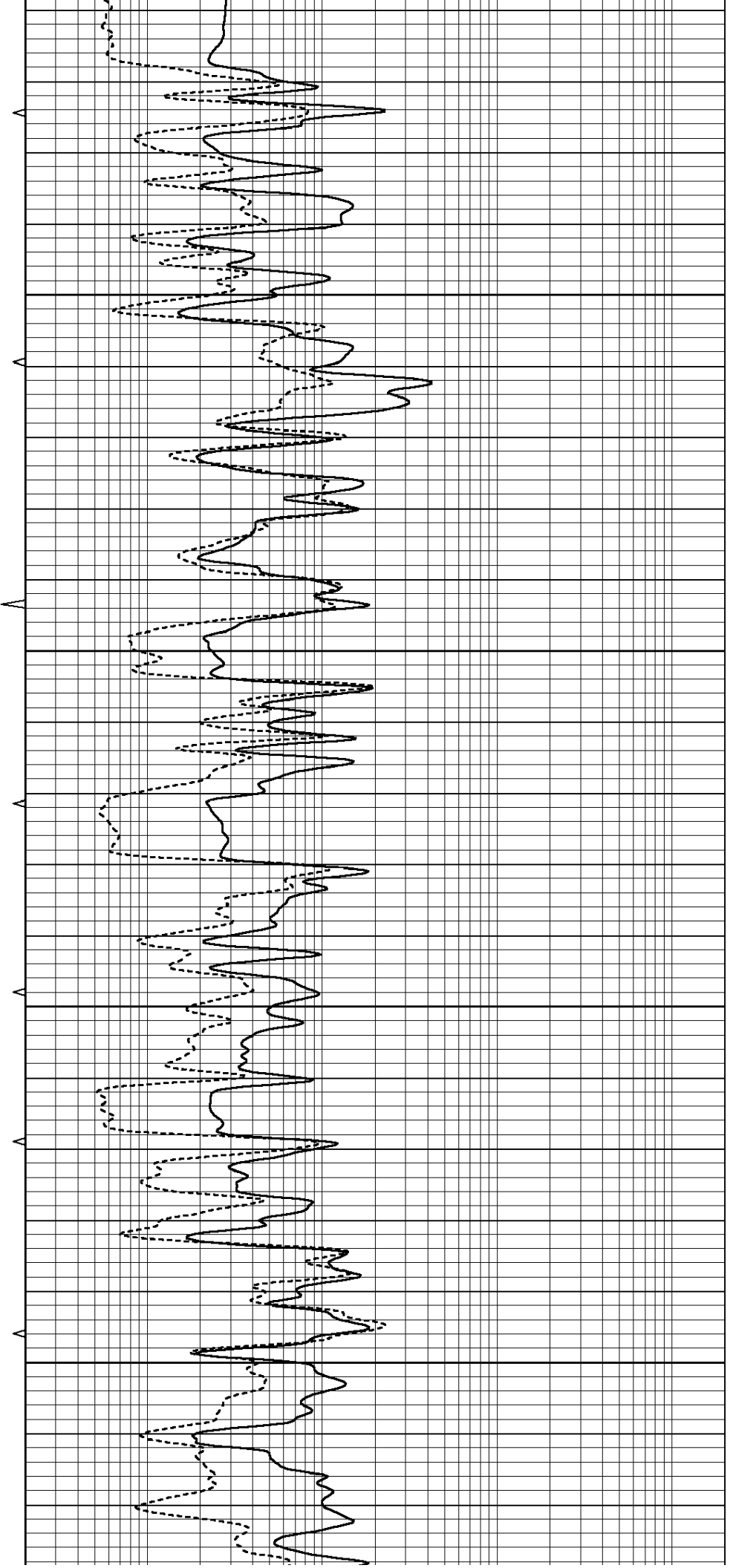


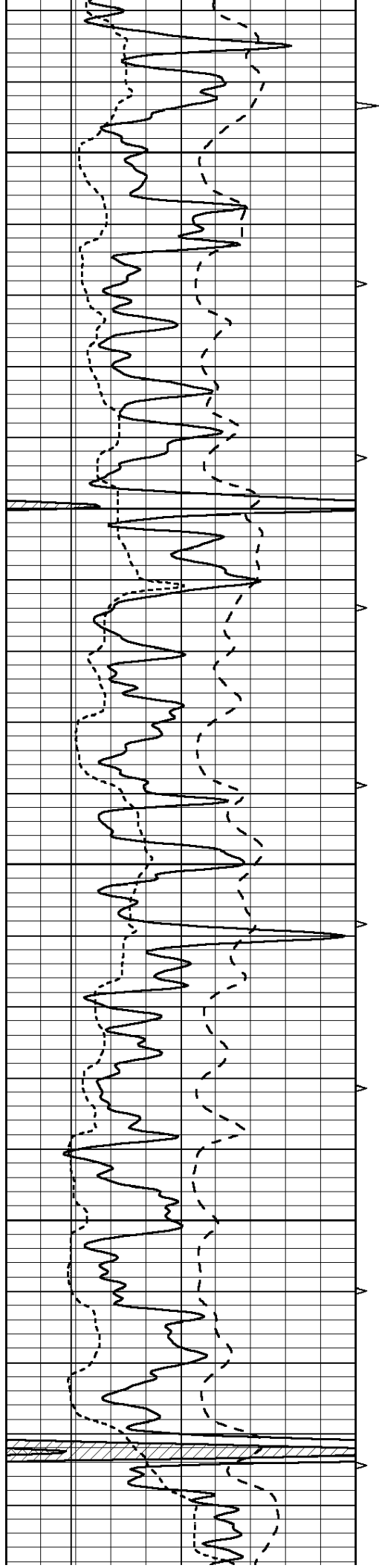
3550

3600

3650

3700



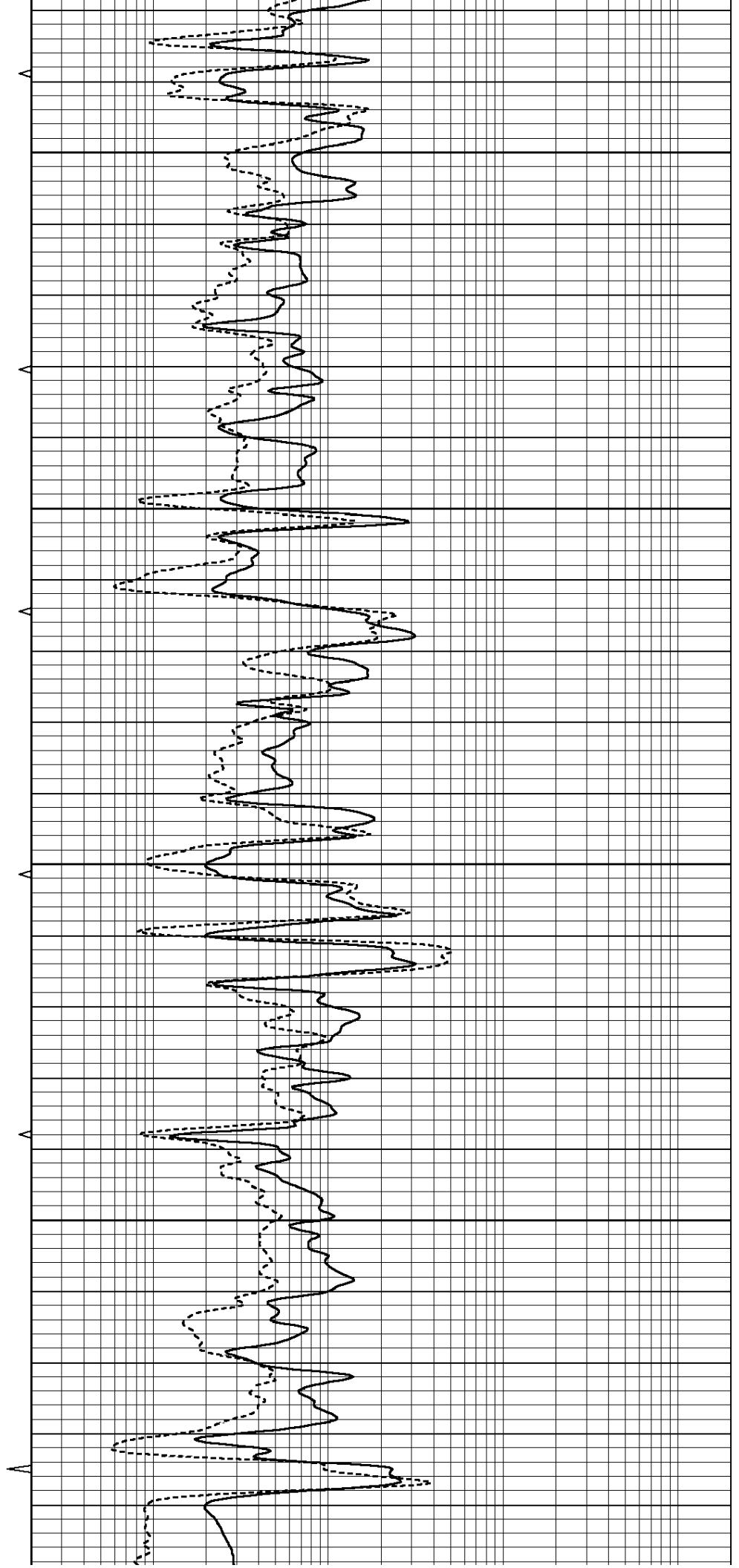


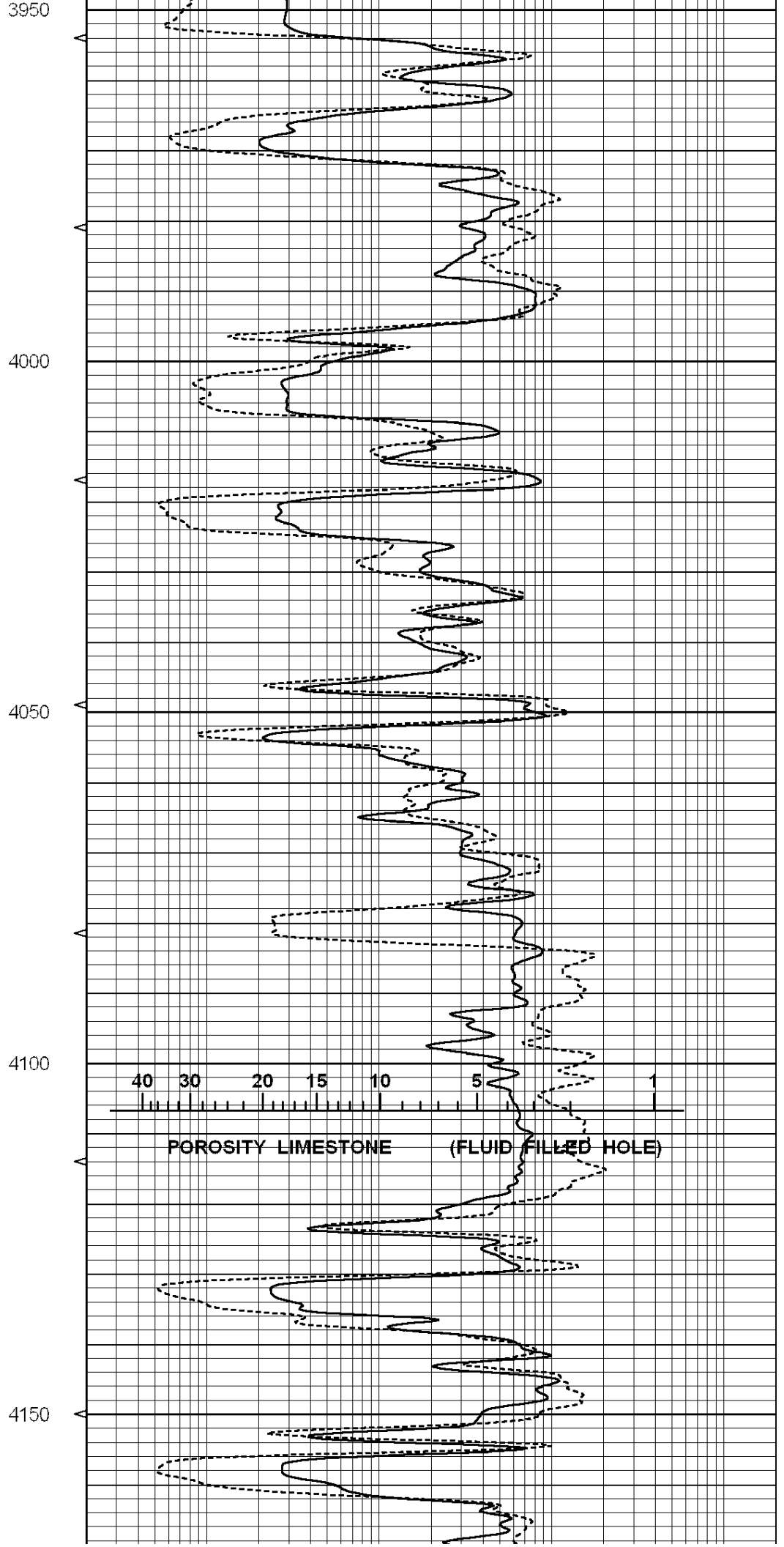
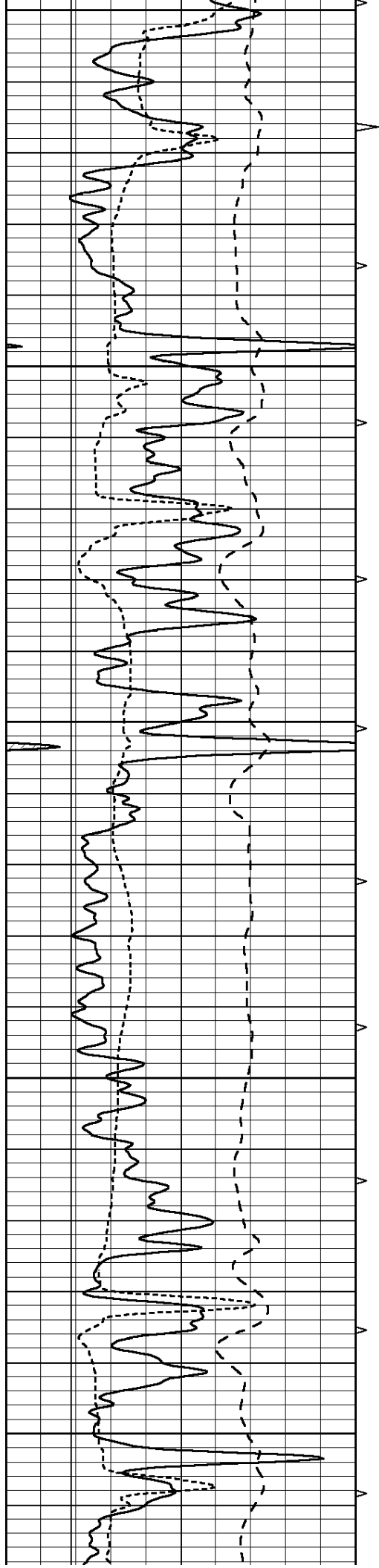
3750

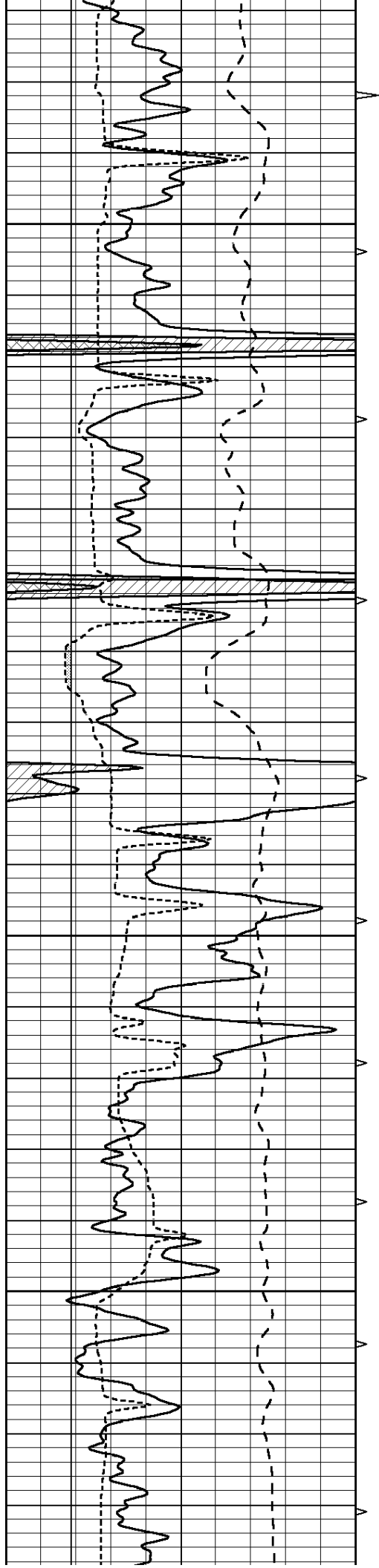
3800

3850

3900





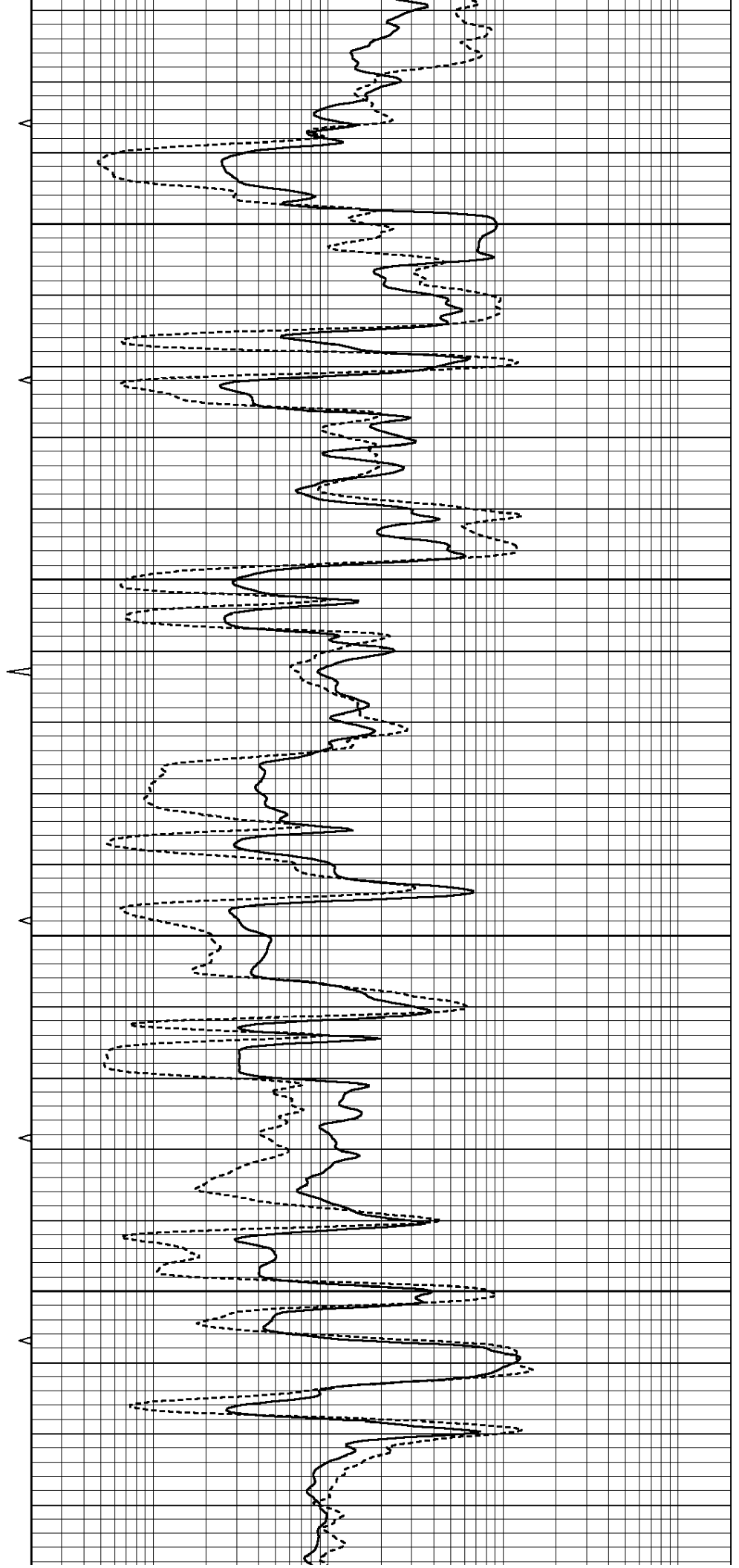


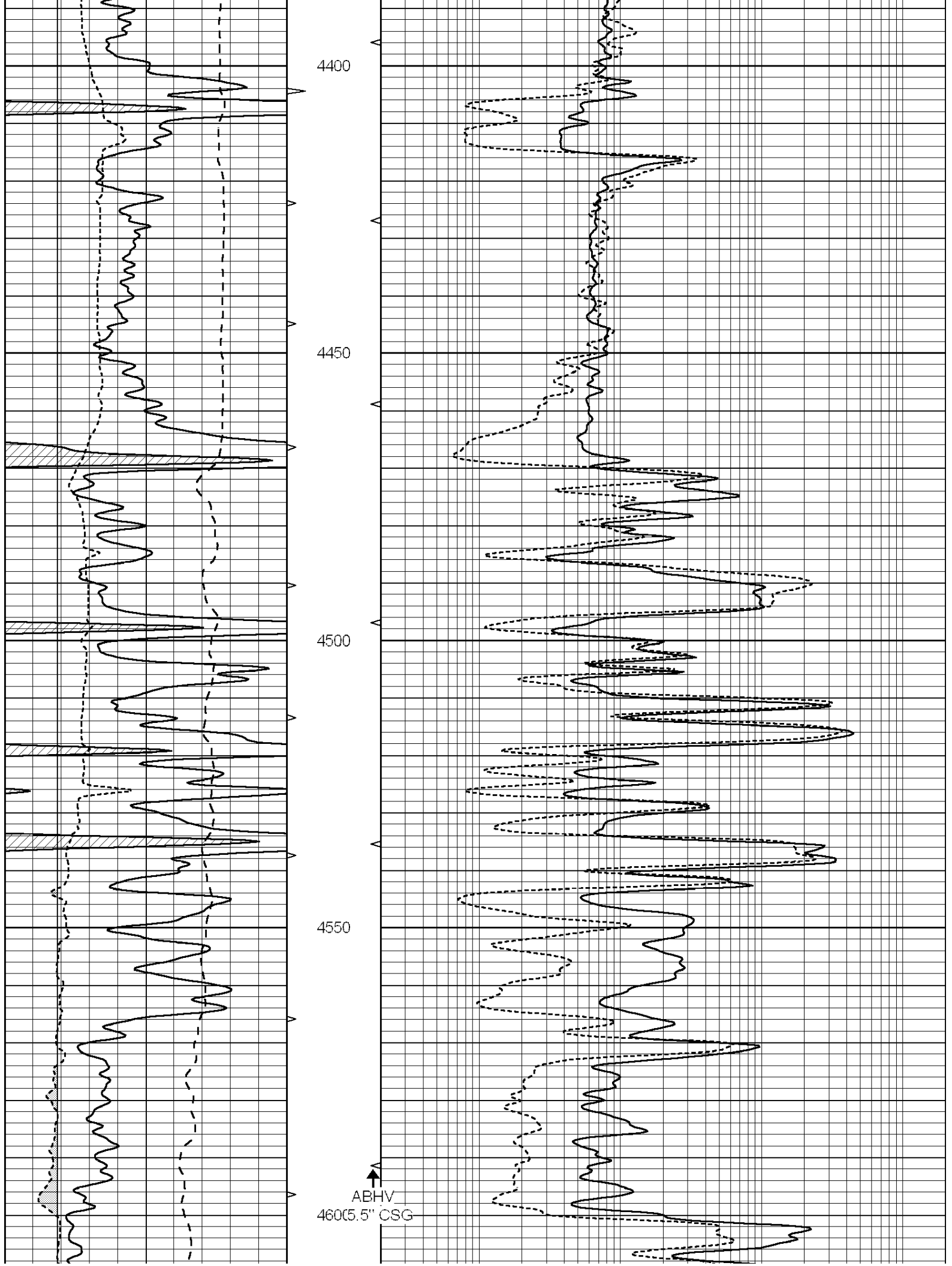
4200

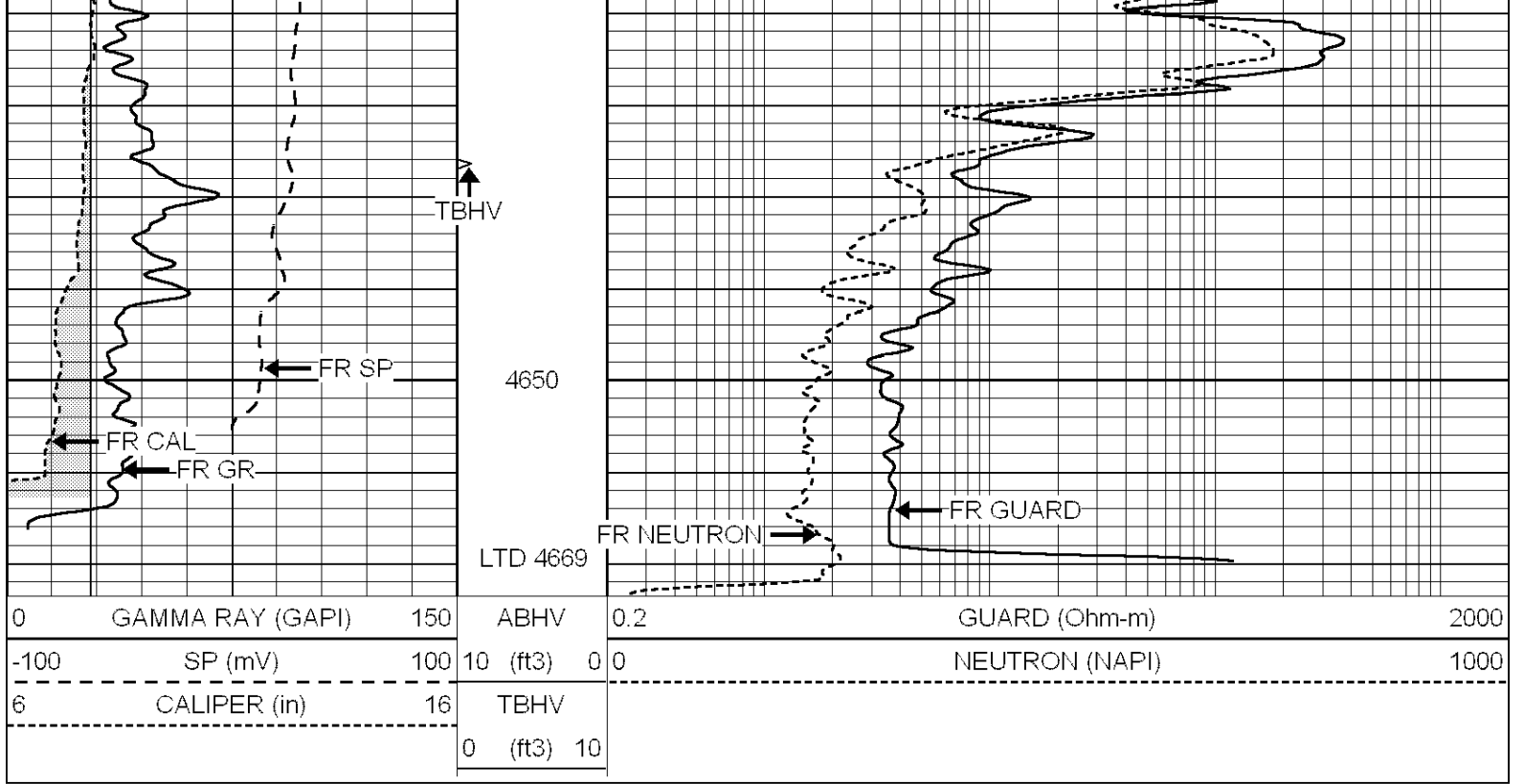
4250

300

4350







SUPERIOR
Hays,
Kansas

REPEAT SECTION

Database File: 009596rag.db
 Dataset Pathname: pass2.1
 Presentation Format: rag
 Dataset Creation: Tue Sep 04 14:03:52 2012 by Calc Open-Cased 090629
 Charted by: Depth in Feet scaled 1:240

