



# DUAL INDUCTION LL3/GR LOG

Company COLT ENERGY INC.  
Well MITCHELL FAMILY TRUST # L-9

Field CENTERVILLE  
County LINN  
State KANSAS

Location: 380' FNL & 2337' FEL  
API # : 15-107-24607-0000  
NE/4

SEC 36 TWP 21S RGE 21E  
Elevation 989'

Company COLT ENERGY INC.  
Well MITCHELL FAMILY TRUST # L-9  
Field CENTERVILLE  
County LINN  
State KANSAS

Date 7-25-2012  
Run Number 862  
Depth Logger OME  
Bottom Logged Interval 8325' @ 22'  
Casing 8325' @ 22'  
Blk Size 6.75'

Permanant Datum Log Measured From GL  
Dilling Measured From GL  
Elevation 989'

Other Services  
CDUSM

Source of Sample  
pH / Fluid Loss  
pH @ Meas. Temp  
pH @ 75' FNL  
pH @ 150' FNL  
pH @ 225' FNL  
pH @ 300' FNL  
pH @ 375' FNL  
pH @ 450' FNL  
pH @ 525' FNL  
pH @ 600' FNL  
pH @ 675' FNL  
pH @ 750' FNL  
pH @ 825' FNL  
pH @ 900' FNL  
pH @ 975' FNL  
pH @ 1050' FNL  
pH @ 1125' FNL  
pH @ 1200' FNL  
pH @ 1275' FNL  
pH @ 1350' FNL  
pH @ 1425' FNL  
pH @ 1500' FNL

Time Circulation Stopped  
Maximum Recorded Temperature  
Equipment Number  
Recorded By  
Witnessed By

Location  
Recorded By  
Witnessed By

MASSHALL

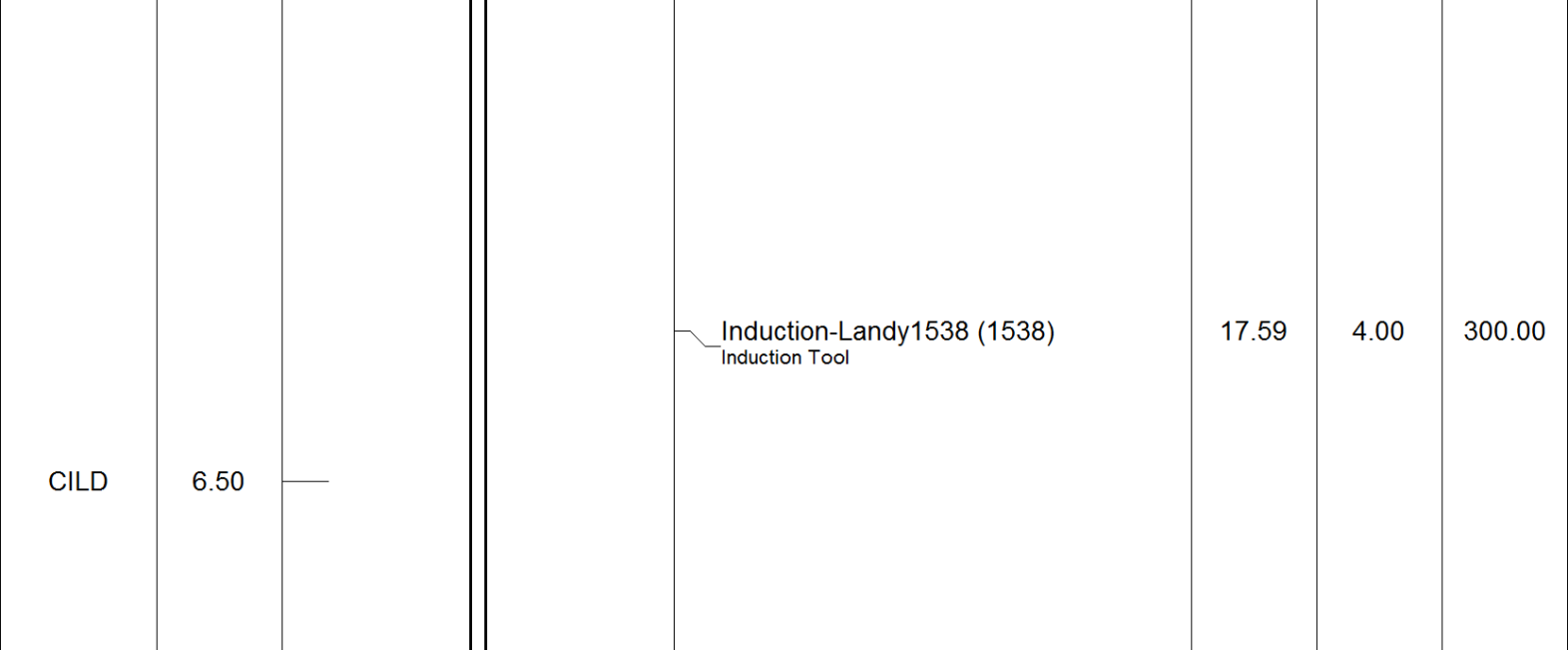
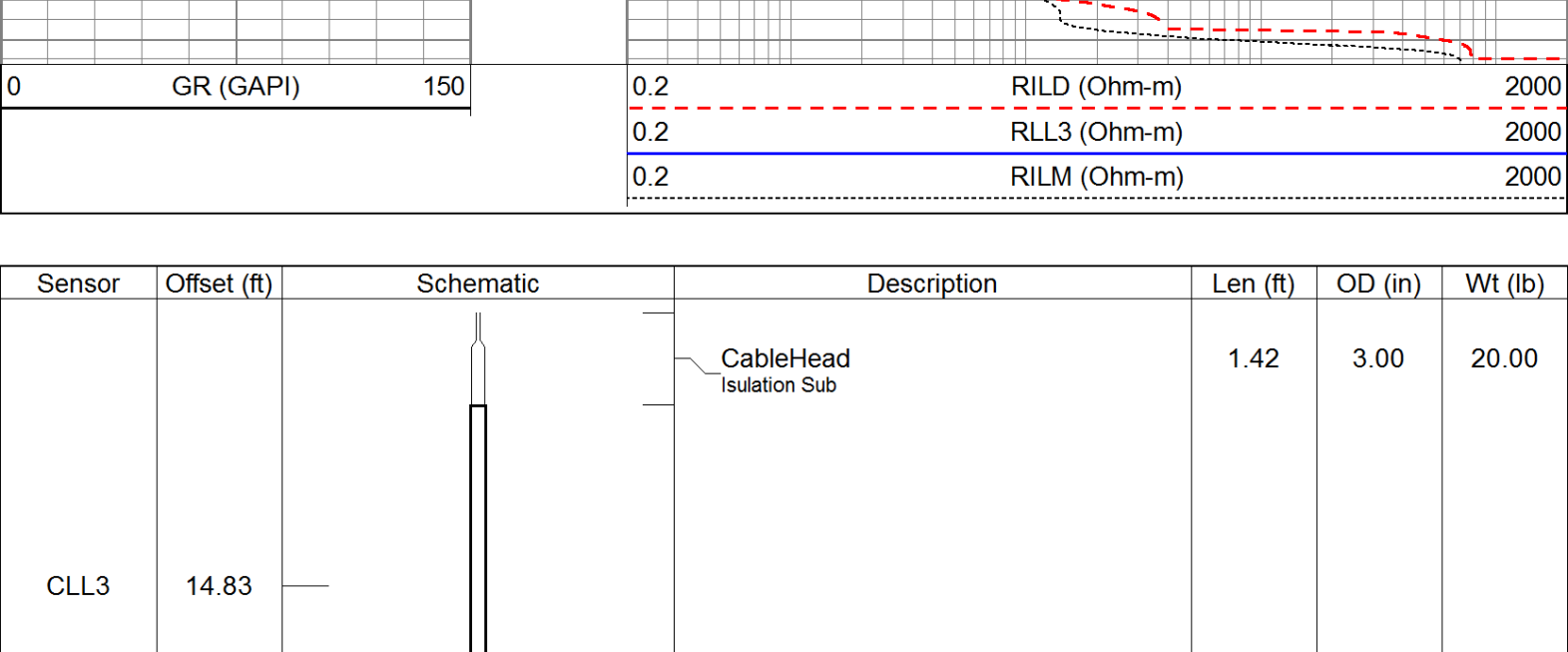
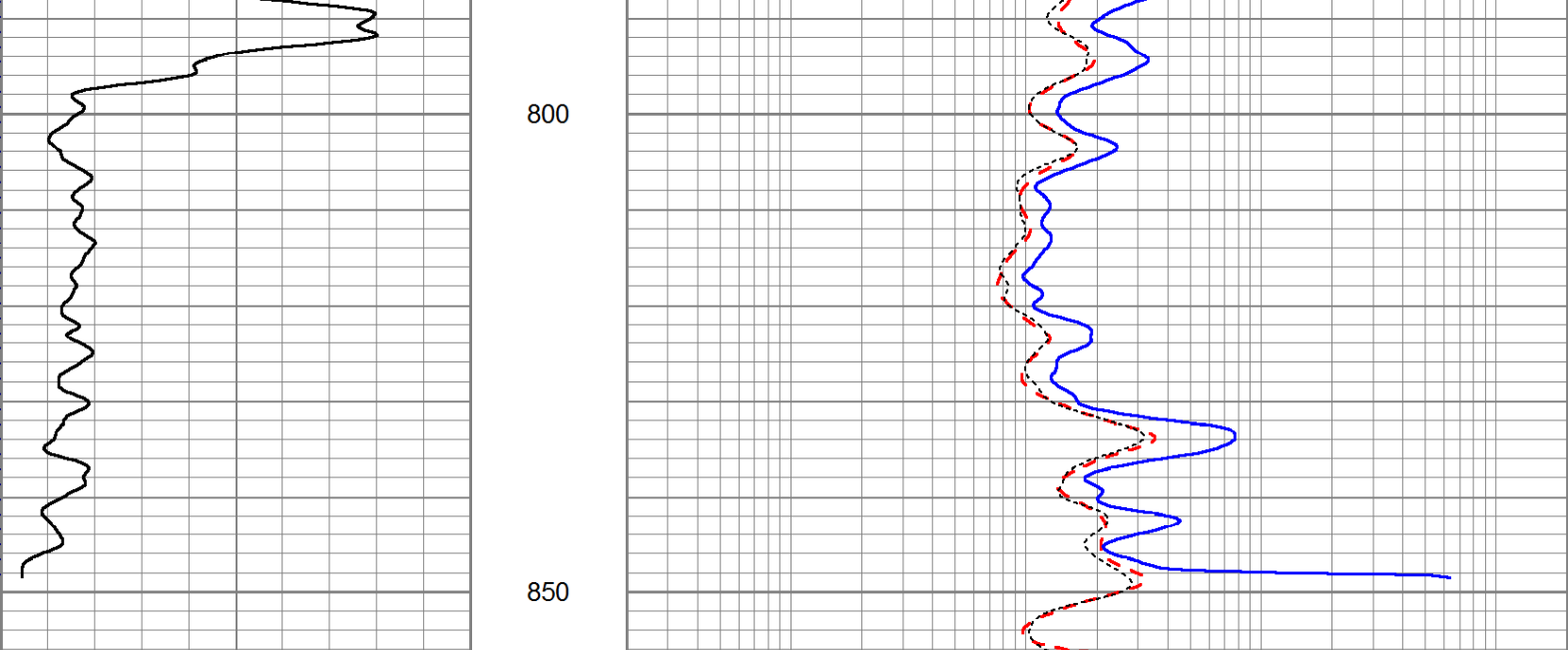
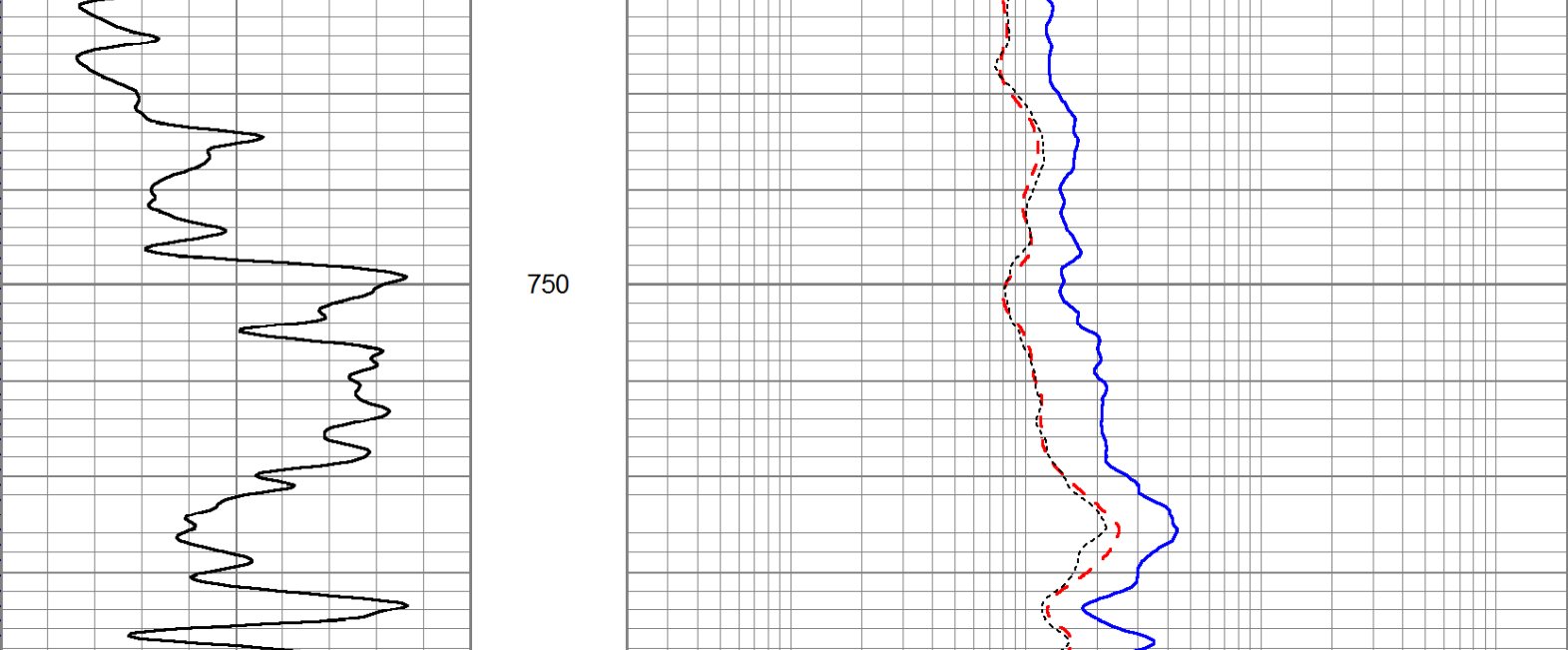
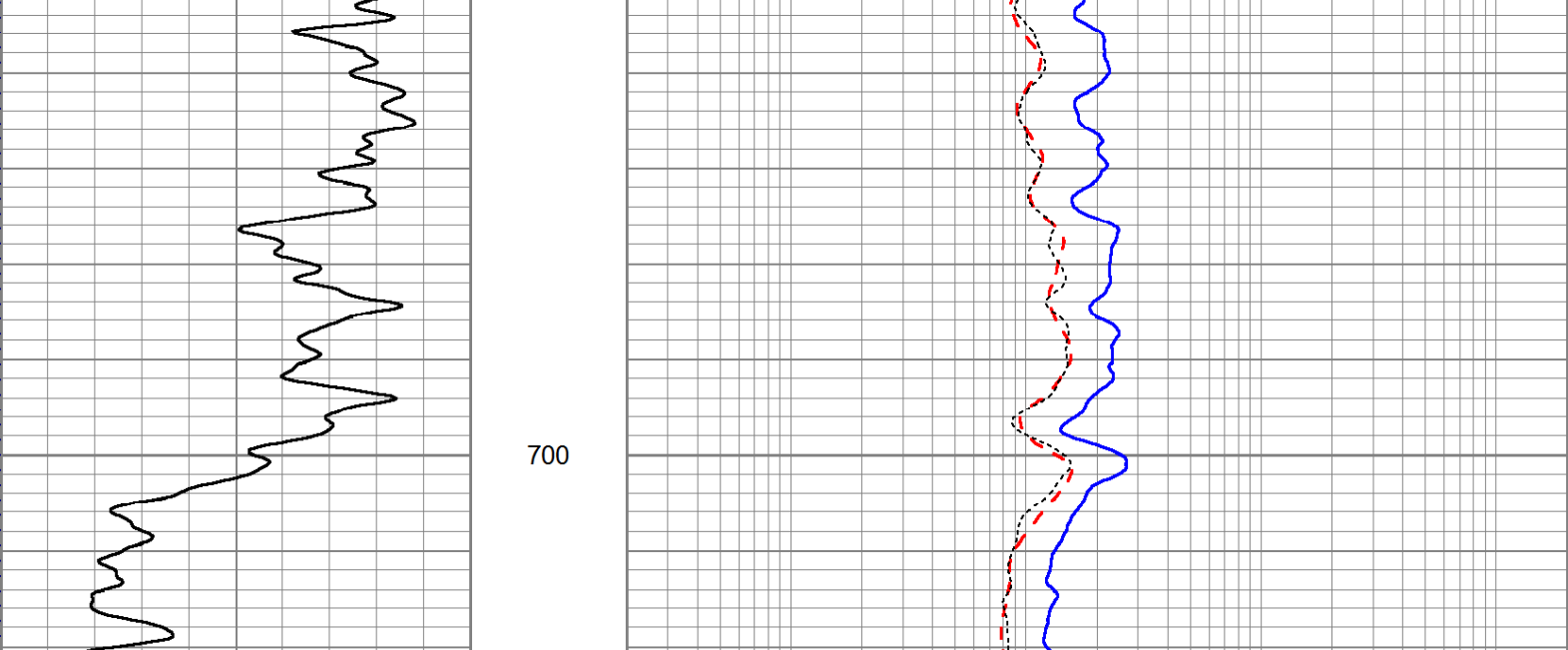
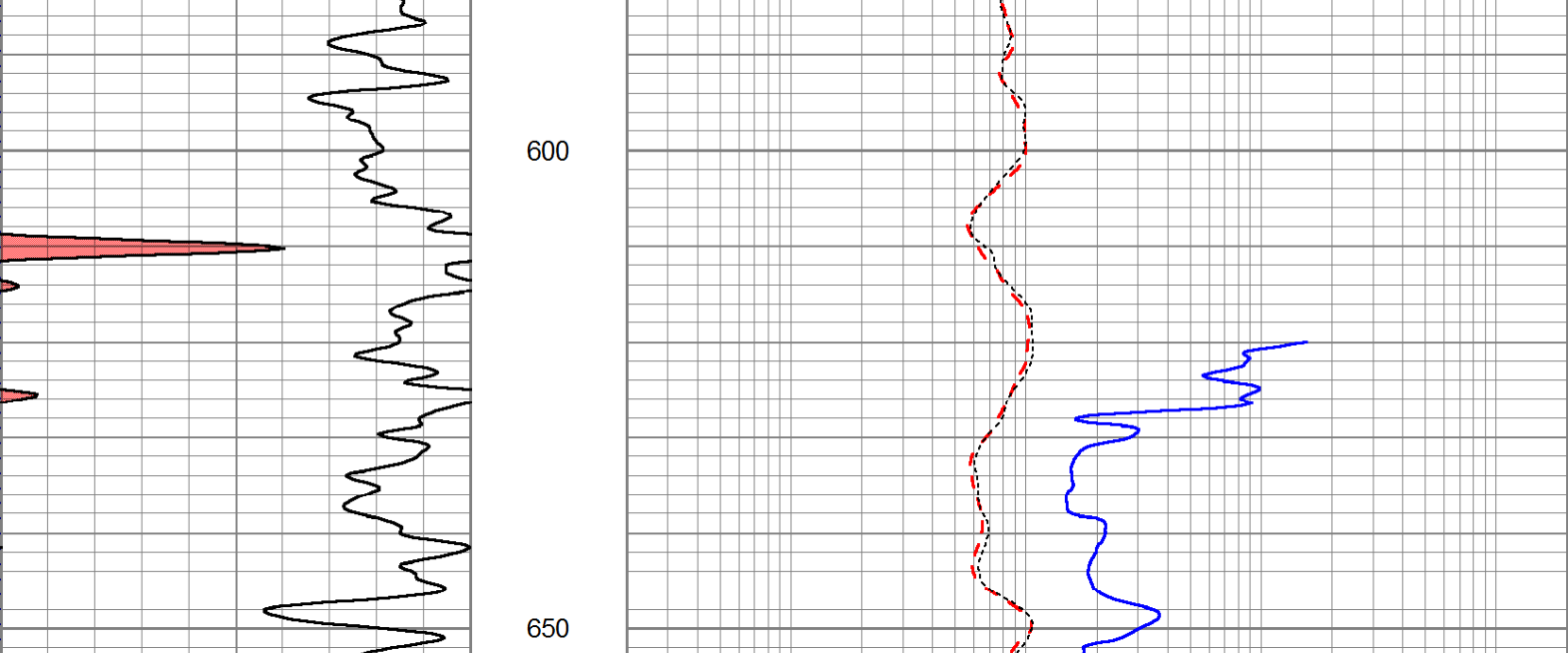
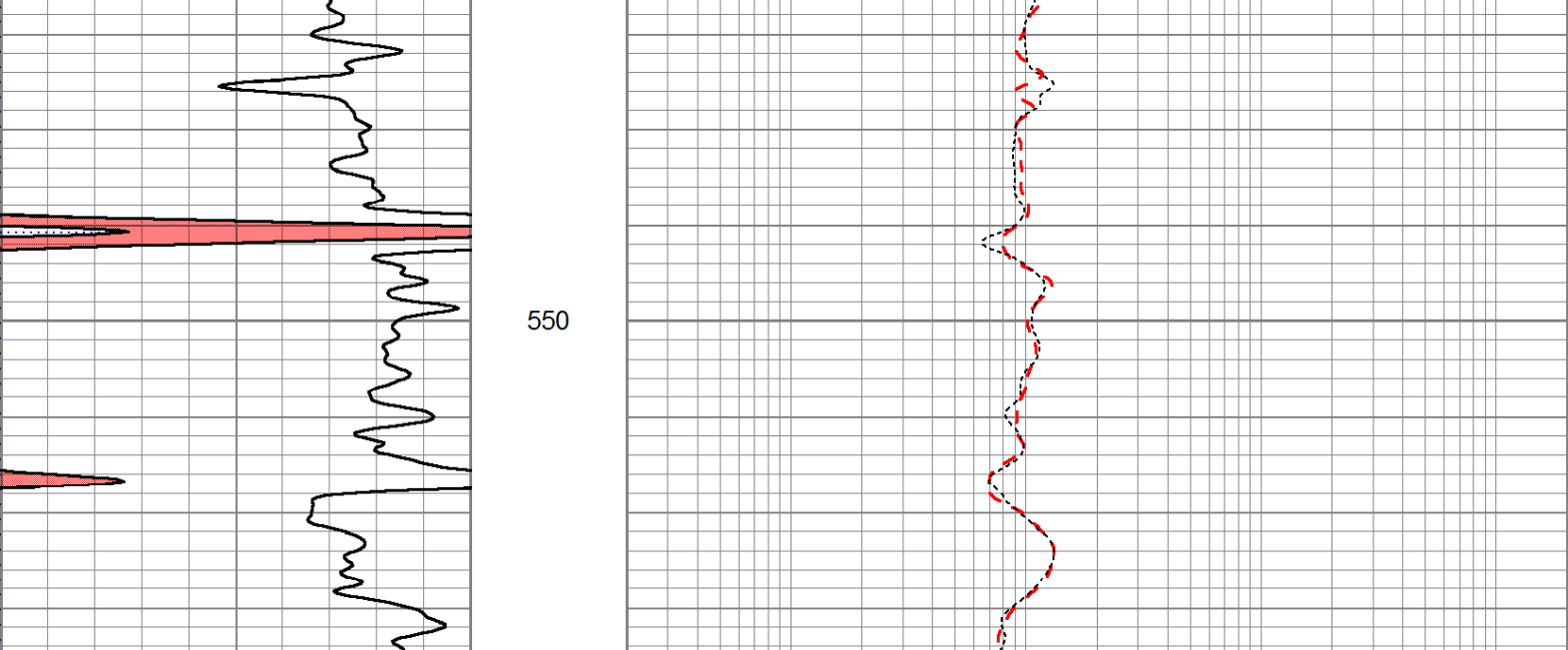
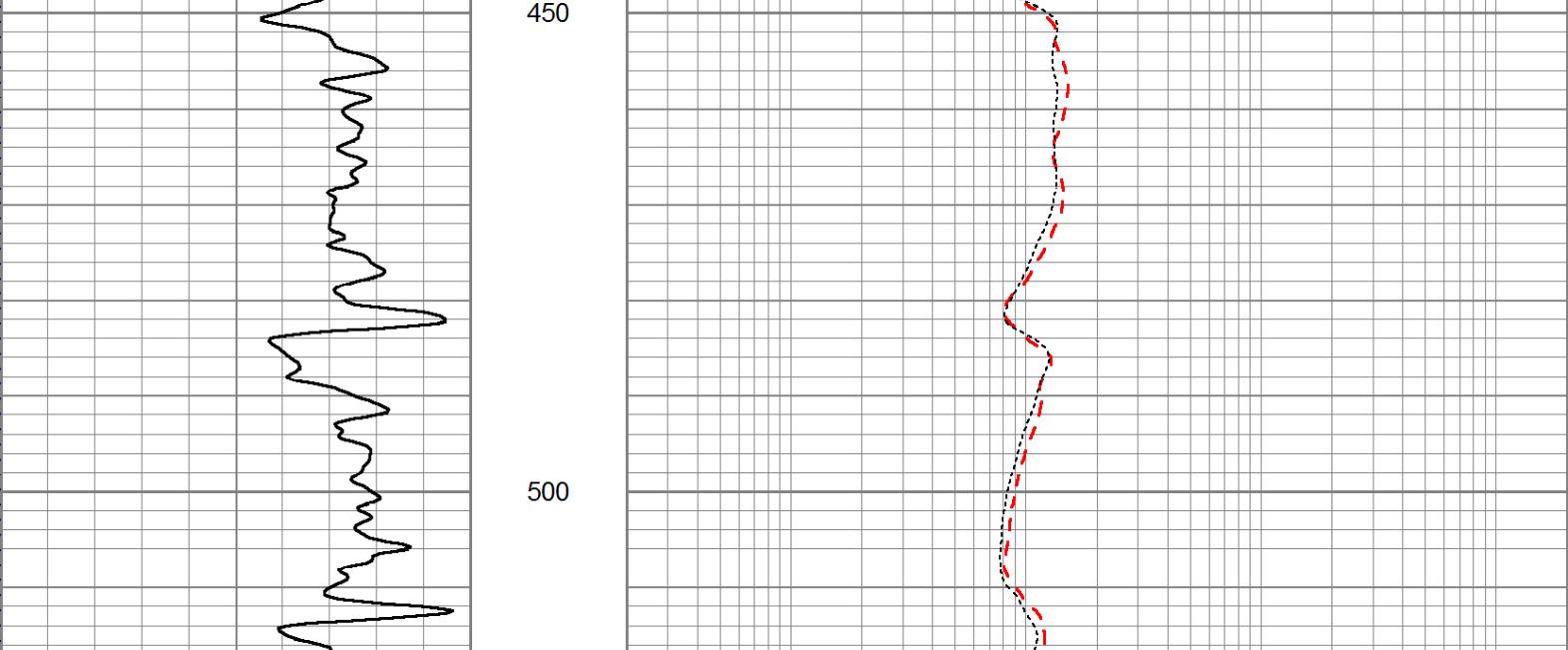
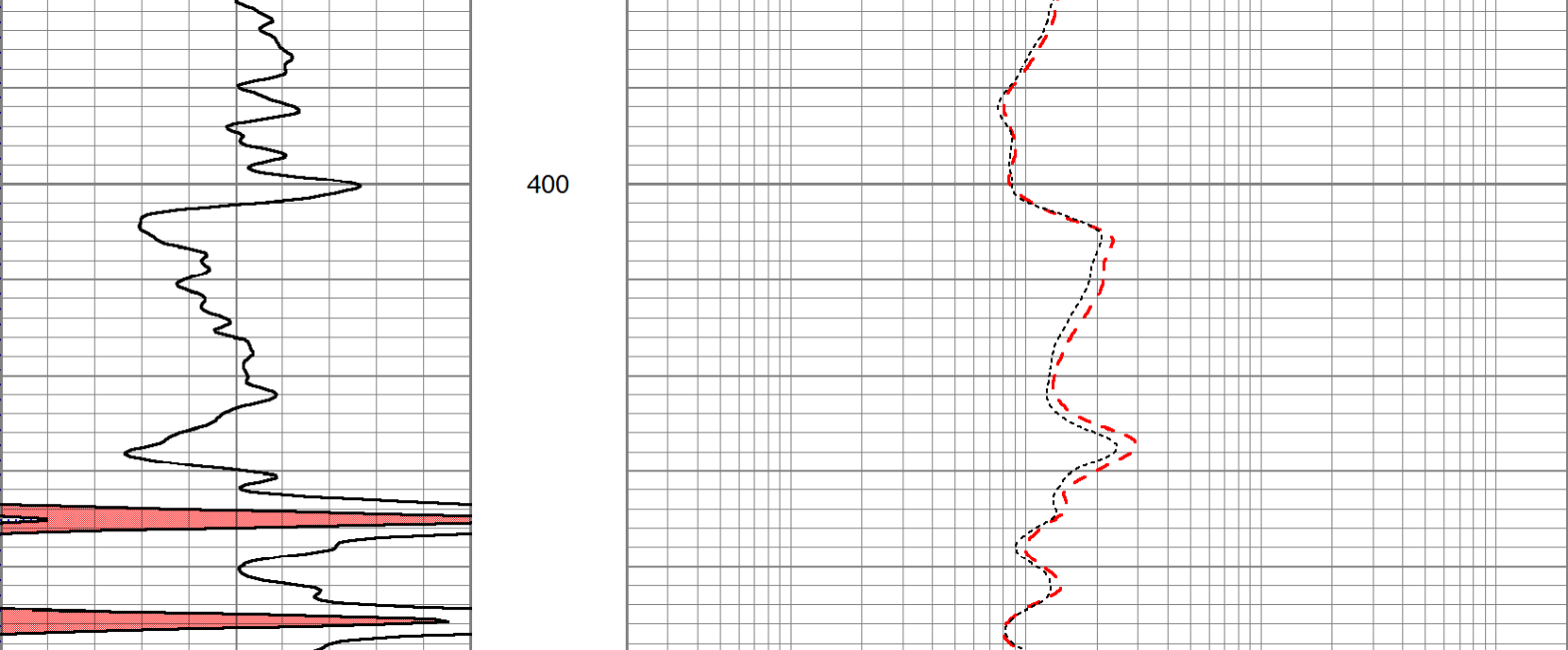
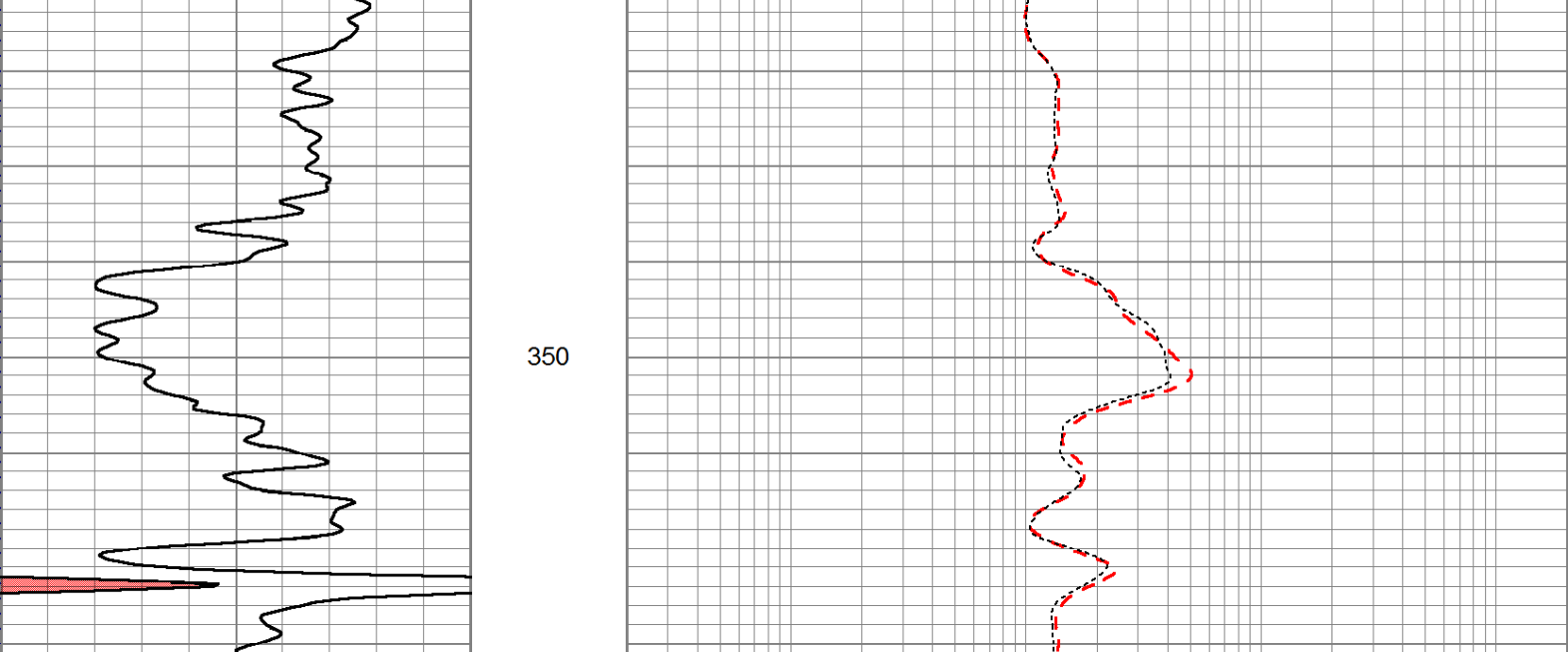
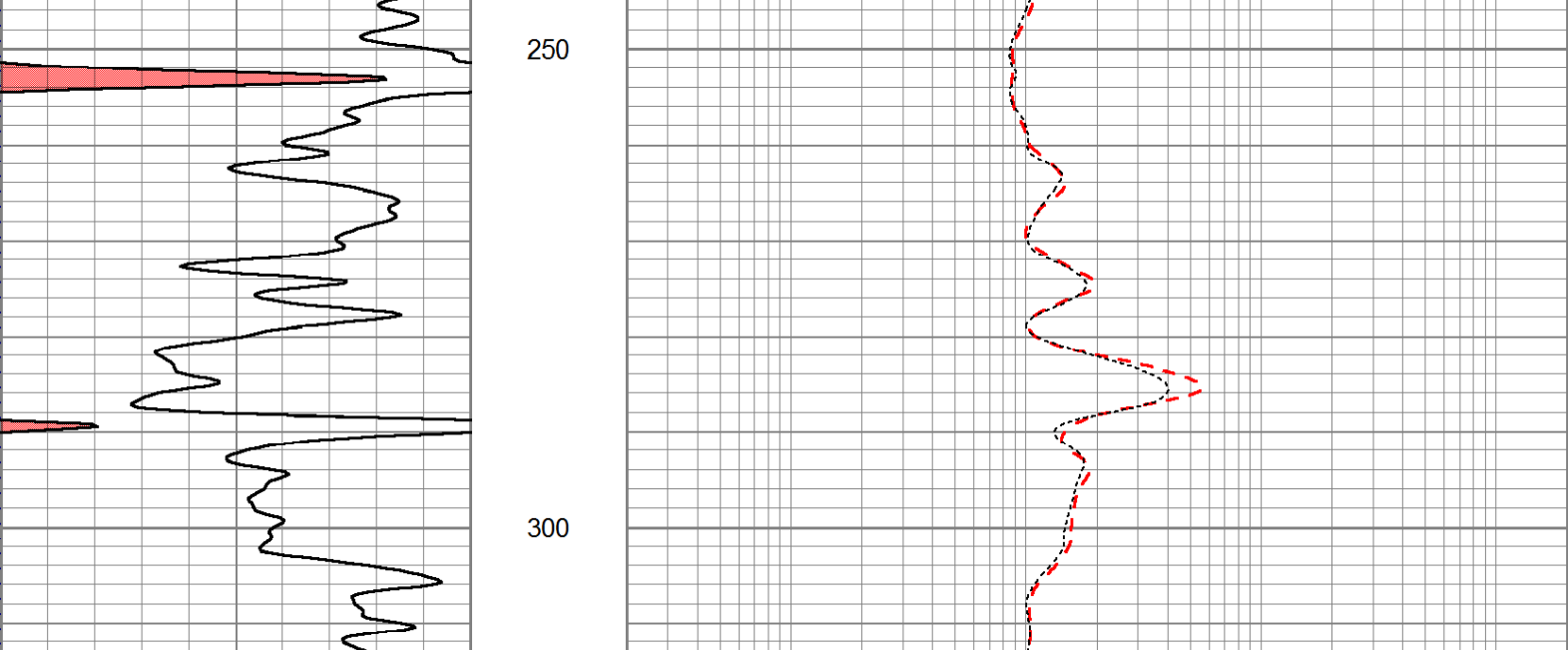
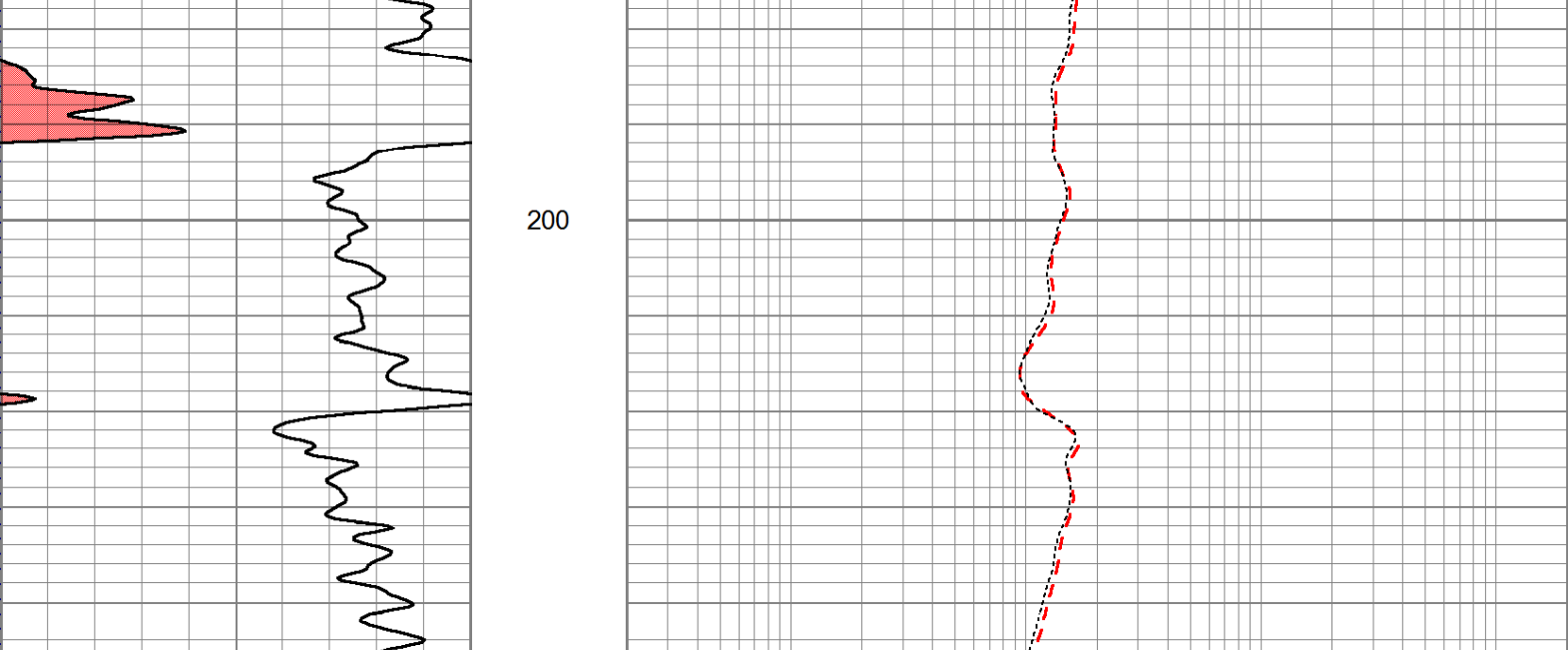
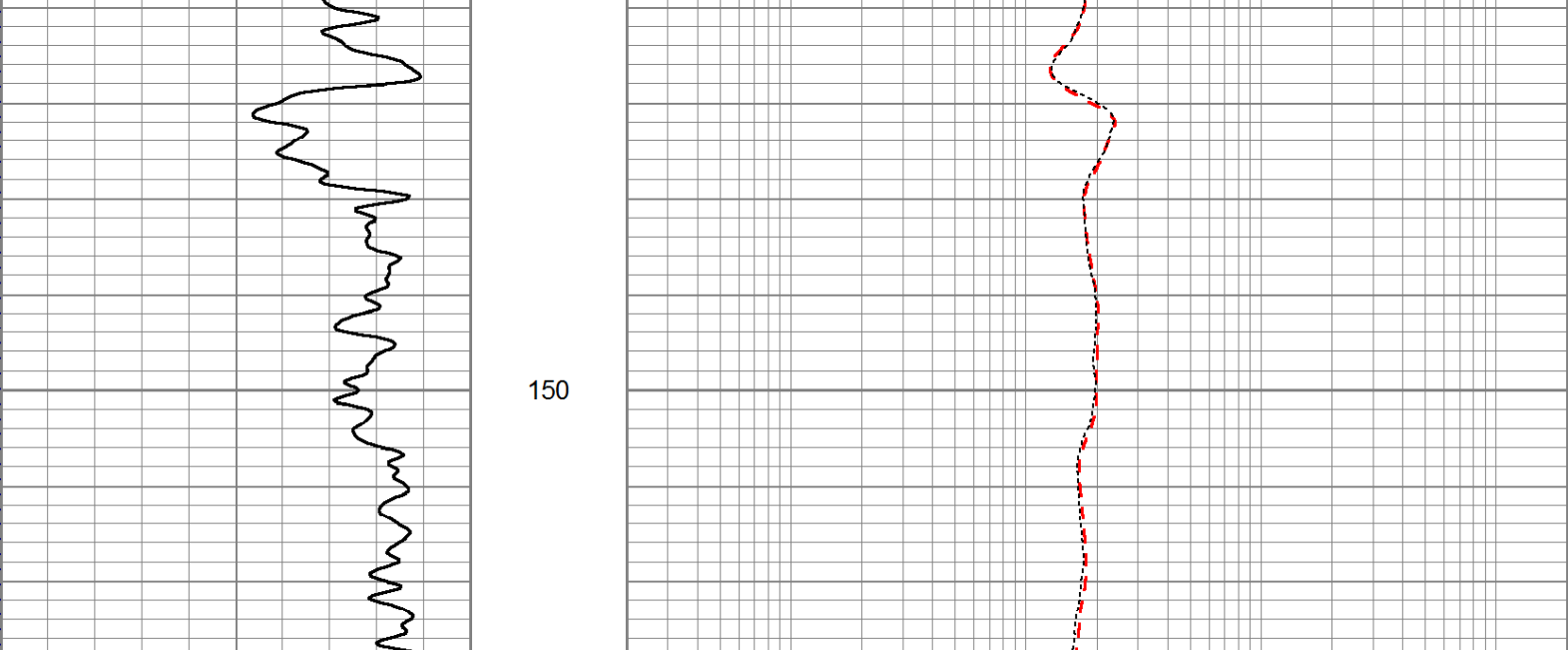
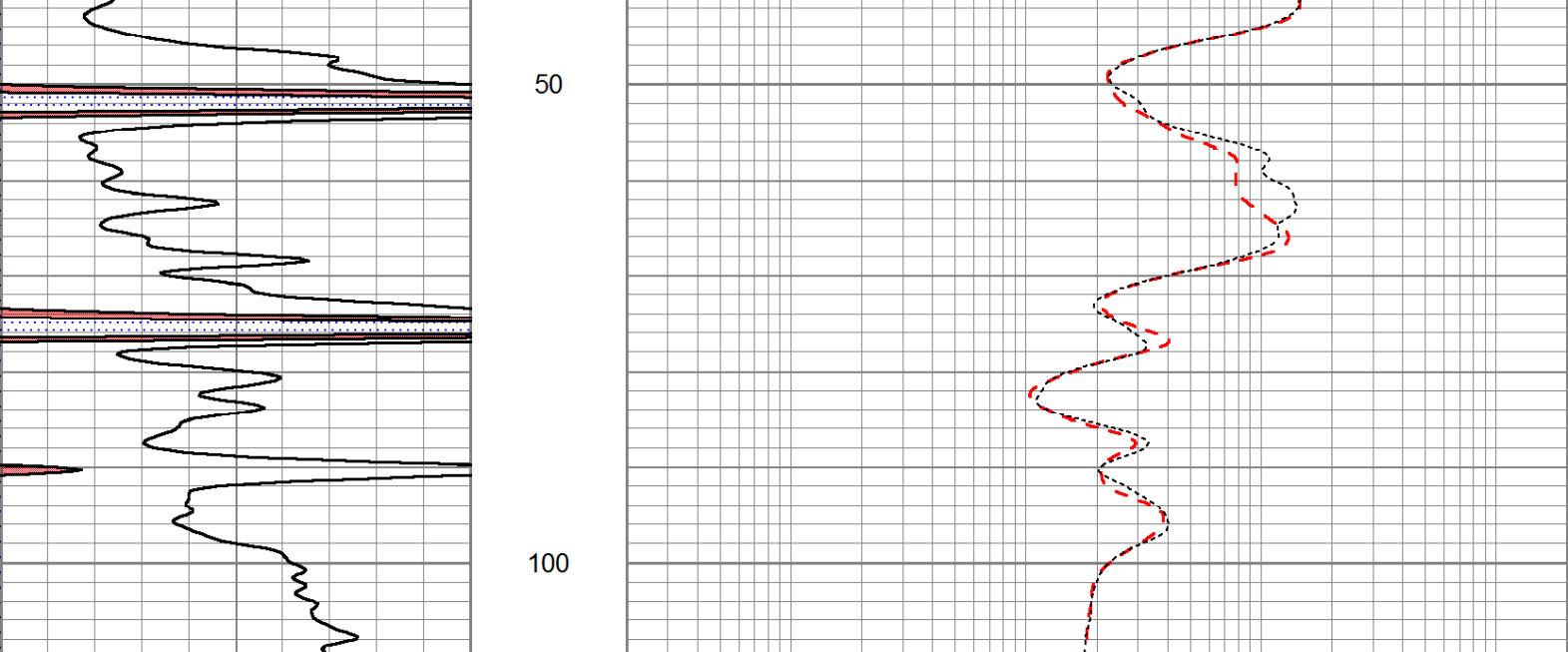
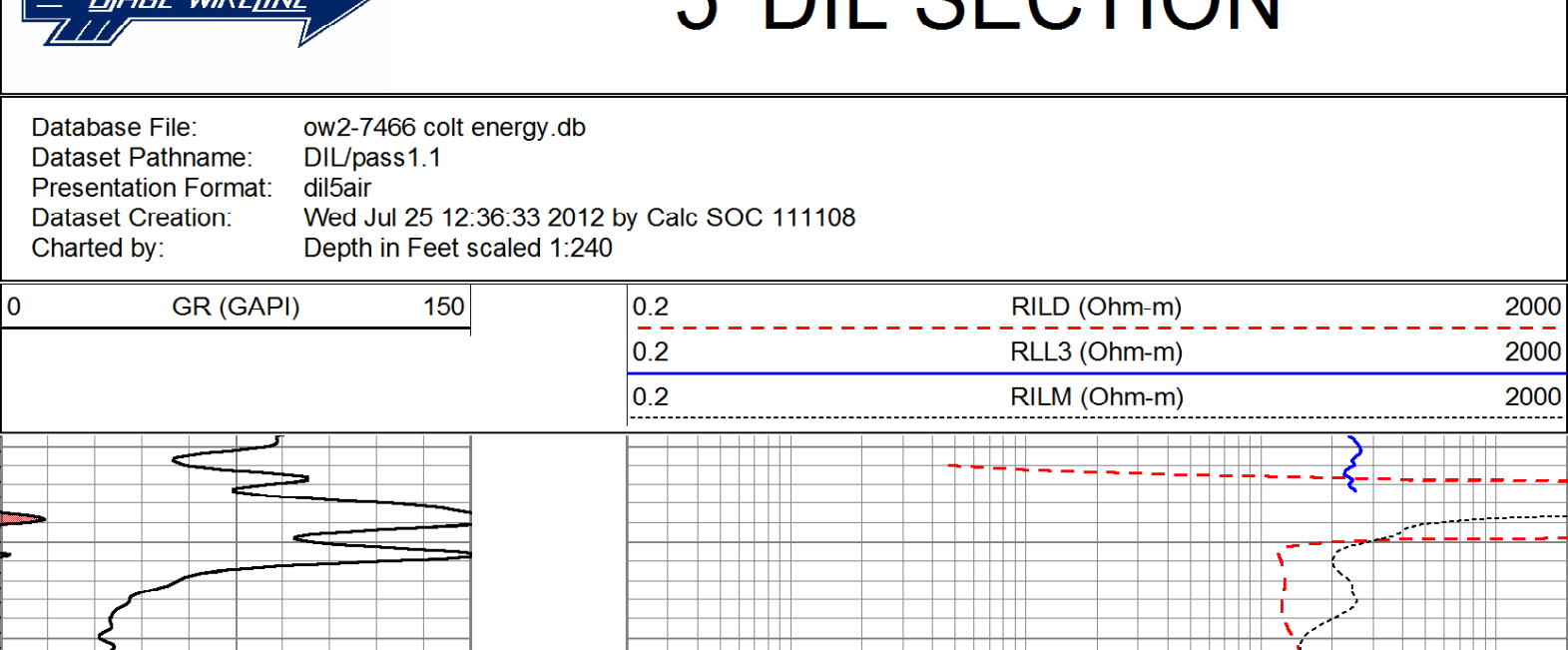
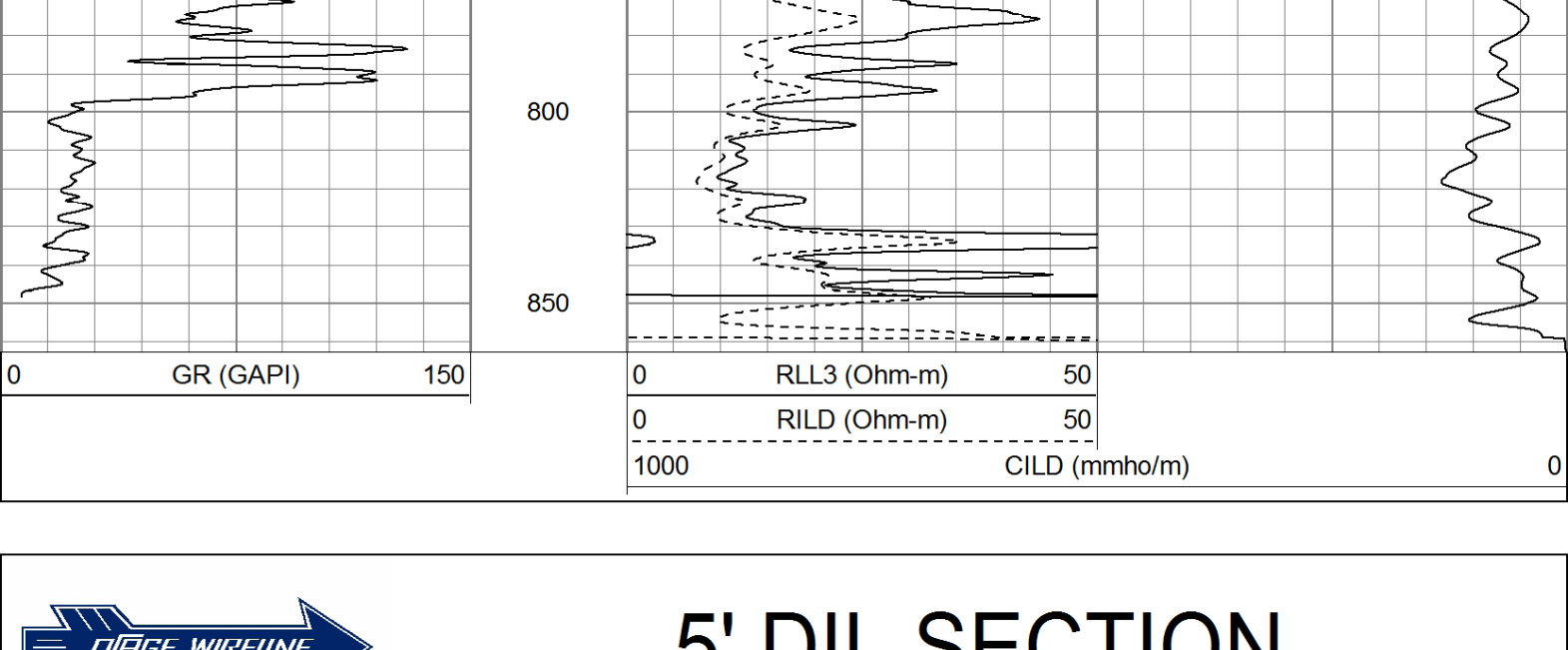
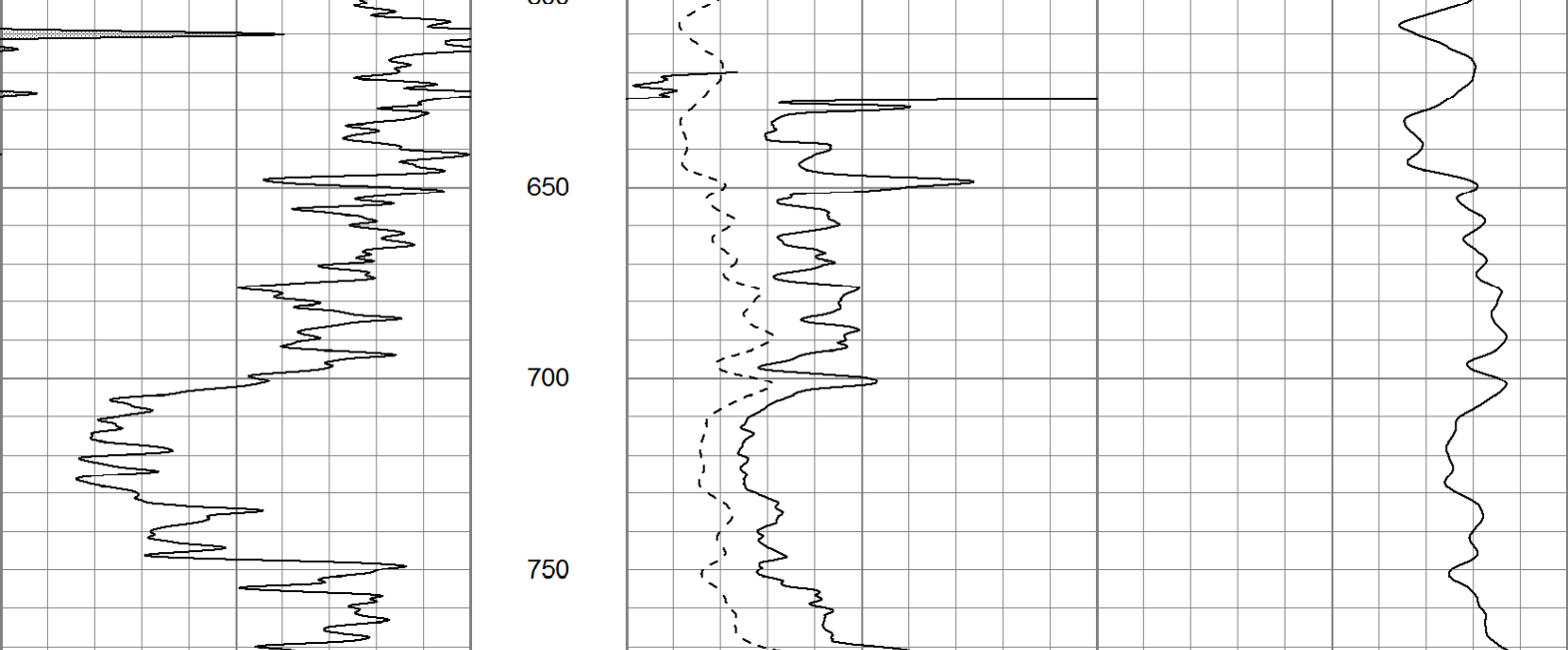
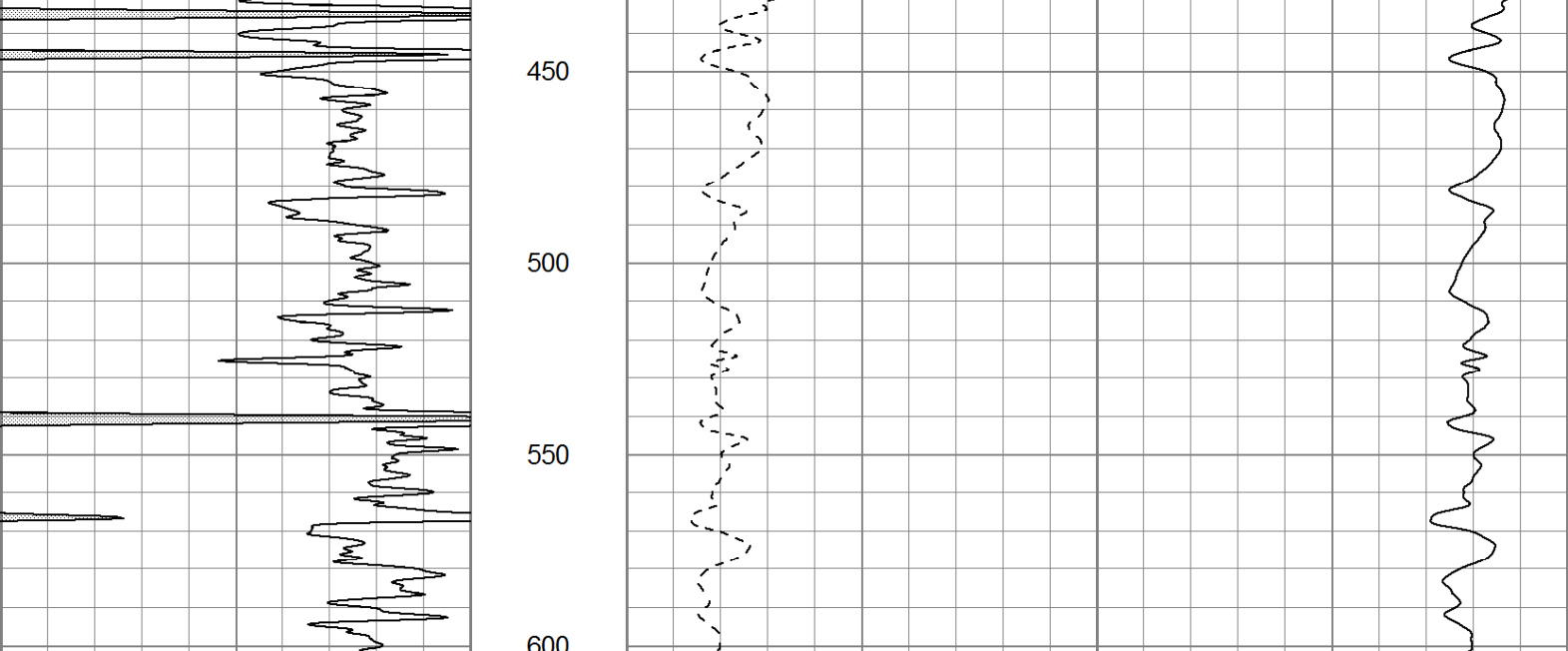
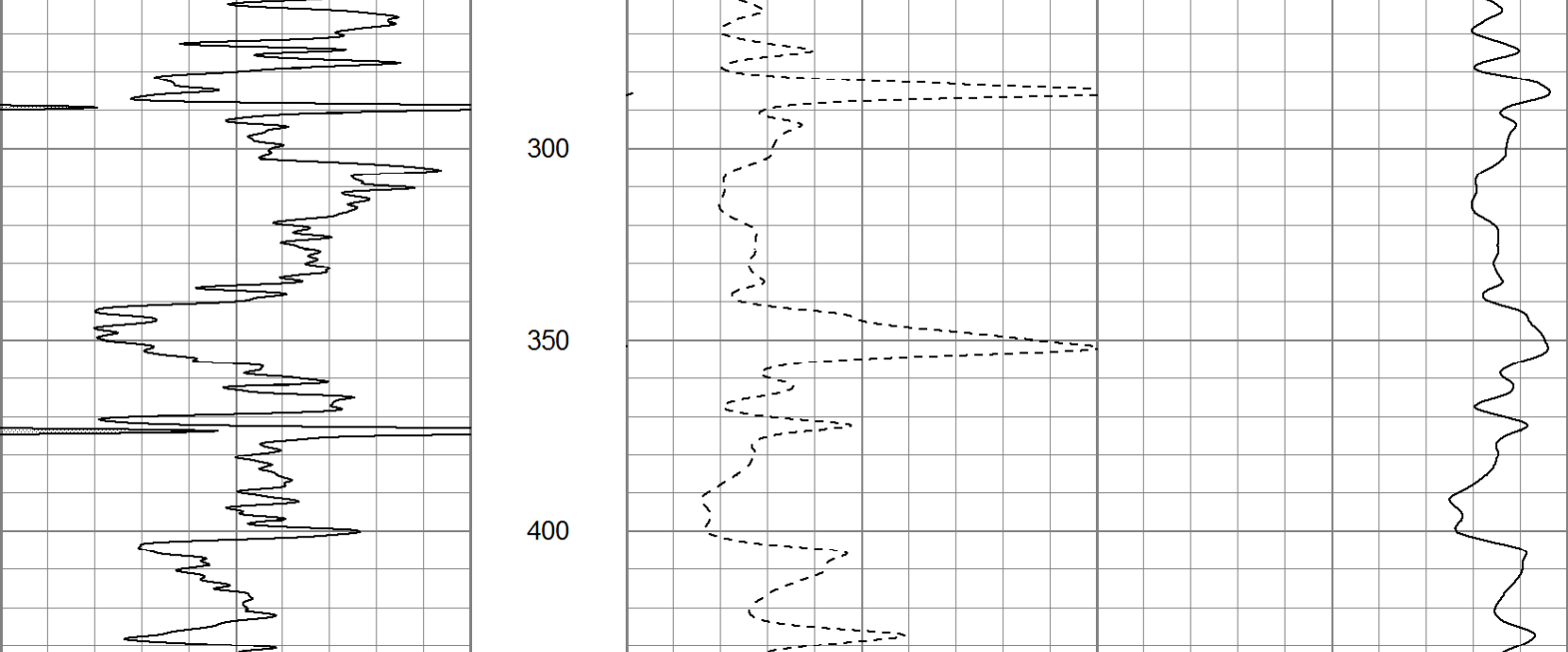
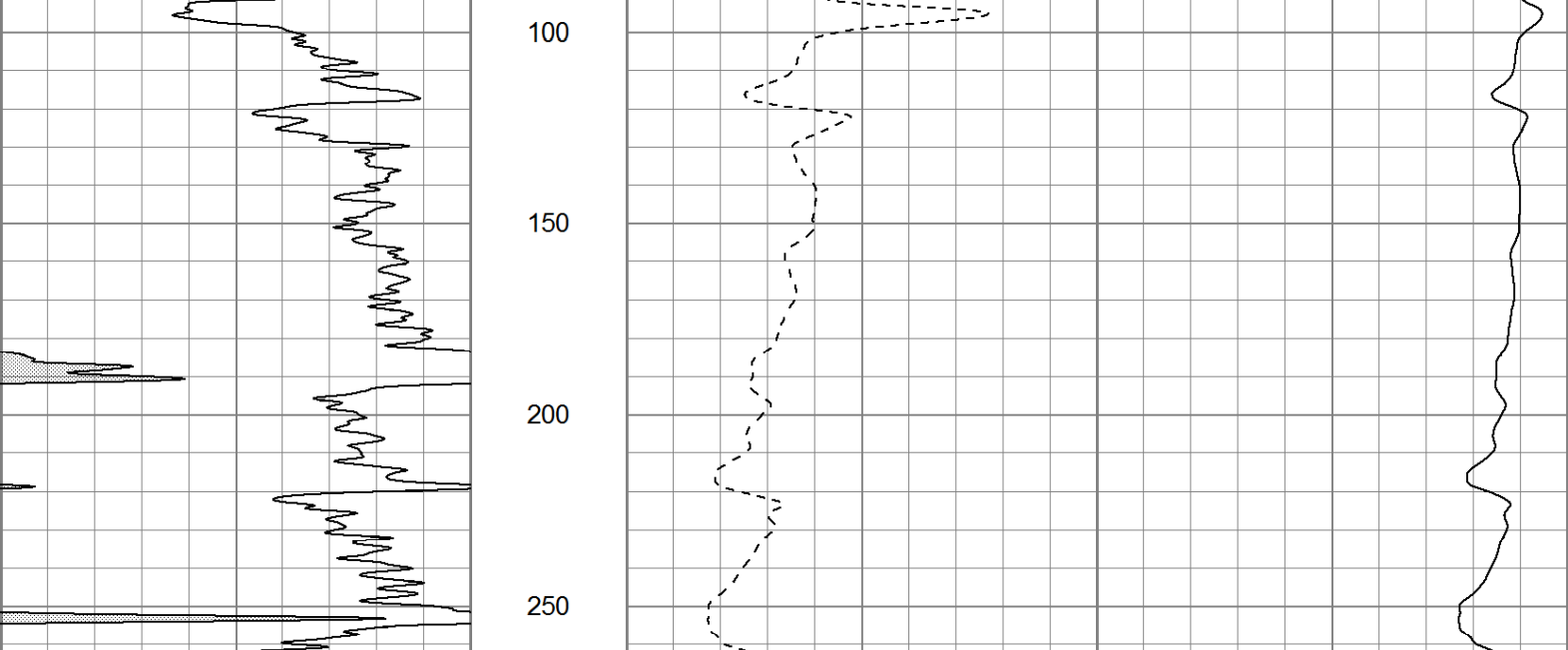
<<< Fold Here >>>

All interpretations are opinions based on inferences from electrical or other measurements and we cannot and do not guarantee the accuracy or correctness of any interpretation, and we shall not, except in the case of gross or willful negligence on our part, be liable or responsible for any loss, costs, damages, or expenses incurred or sustained by anyone resulting from any interpretation made by any of our officers, agents or employees. These interpretations are also subject to our general terms and conditions set out in our current Price Schedule.

Comments

OW2-7464  
CREW : SHAMBLES

Database File: ow2-7466 colt energy.db  
Dataset Pathname: DIL/pass1.2  
Presentation Format: dil2nomed  
Dataset Creation: Wed Jul 25 12:36:37 2012 by Calc SOC 111108  
Charted by: Depth in Feet scaled 1:600



Sensor	Offset (ft)	Schematic	Description	Len (ft)	OD (in)	Wt (lb)
			CableHead Isolation Sub	1.42	3.00	20.00
CLL3	14.83					
			Induction-Landy1538 (1538) Induction Tool	17.59	4.00	300.00
CILD	6.50					
CILM	3.33					
SP	0.83					

Dataset: ow2-7466 colt energy.db: field/well/DIL/pass1  
Total Length: 19.01 ft  
Total Weight: 320.00 lb  
O.D.: 4.00 in