



**SUPERIOR**  
Hays,  
Kansas

**MICRO**  
LOG

Company RED OAK ENERGY, INC.  
Well BITTEL #1-11  
Field WILDCAT  
County SHERIDAN  
State KANSAS

Company RED OAK ENERGY, INC.  
Well BITTEL #1-11  
Field WILDCAT  
County SHERIDAN State KANSAS

Location: API # : 15-179-21294-0000  
1875' FNL & 2310' FWL  
SEC 11 TWP 10S RGE 26W  
Permanent Datum GROUND LEVEL Elevation 2603  
Log Measured From KELLY BUSHING & A.G.L.  
Drilling Measured From KELLY BUSHING  
Elevation  
K.B. 2611  
D.F. 2609  
G.L. 2603

Date	3/19/11
Run Number	TWO
Depth Driller	4150
Depth Logger	4150
Bottom Logged Interval	4148
Top Log Interval	3800
Casing Driller	8 5/8" @ 252
Casing Logger	NA
Bit Size	7 7/8
Type Fluid in Hole	CHEMICAL MUD
Density / Viscosity	9.2/44
pH / Fluid Loss	9.5/8.0
Source of Sample	FLOWLINE
Rim @ Meas. Temp	.75 @ 88F
Rmf @ Meas. Temp	.56 @ 88F
Rmc @ Meas. Temp	.90 @ 88F
Source of Rmf / Rmc	MEASURED
Rim @ BHT	.58 @ 117F
Time Circulation Stopped	2 HOURS
Time Logger on Bottom	
Maximum Recorded Temperature	117F
Equipment Number	680
Location	HAYS, KS.
Recorded By	JASON CAPPELLUCCI
Witnessed By	SEAN DEENIHAN

<<< Fold Here >>>

All interpretations are opinions based on inferences from electrical or other measurements and we cannot and do not guarantee the accuracy or correctness of any interpretation, and we shall not, except in the case of gross or willful negligence on our part, be liable or responsible for any loss, costs, damages, or expenses incurred or sustained by anyone resulting from any interpretation made by any of our officers, agents or employees. These interpretations are also subject to our general terms and conditions set out in our current Price Schedule.

**Comments**

THANK YOU FOR USING SUPERIOR WELL SERVICE (785) 628-6395  
DIRECTIONS  
QUINTER, KS. - 9 N. TO RD 110S. - 2 1/4 E. - THRU CATTLE GUARD - E. & S. INTO

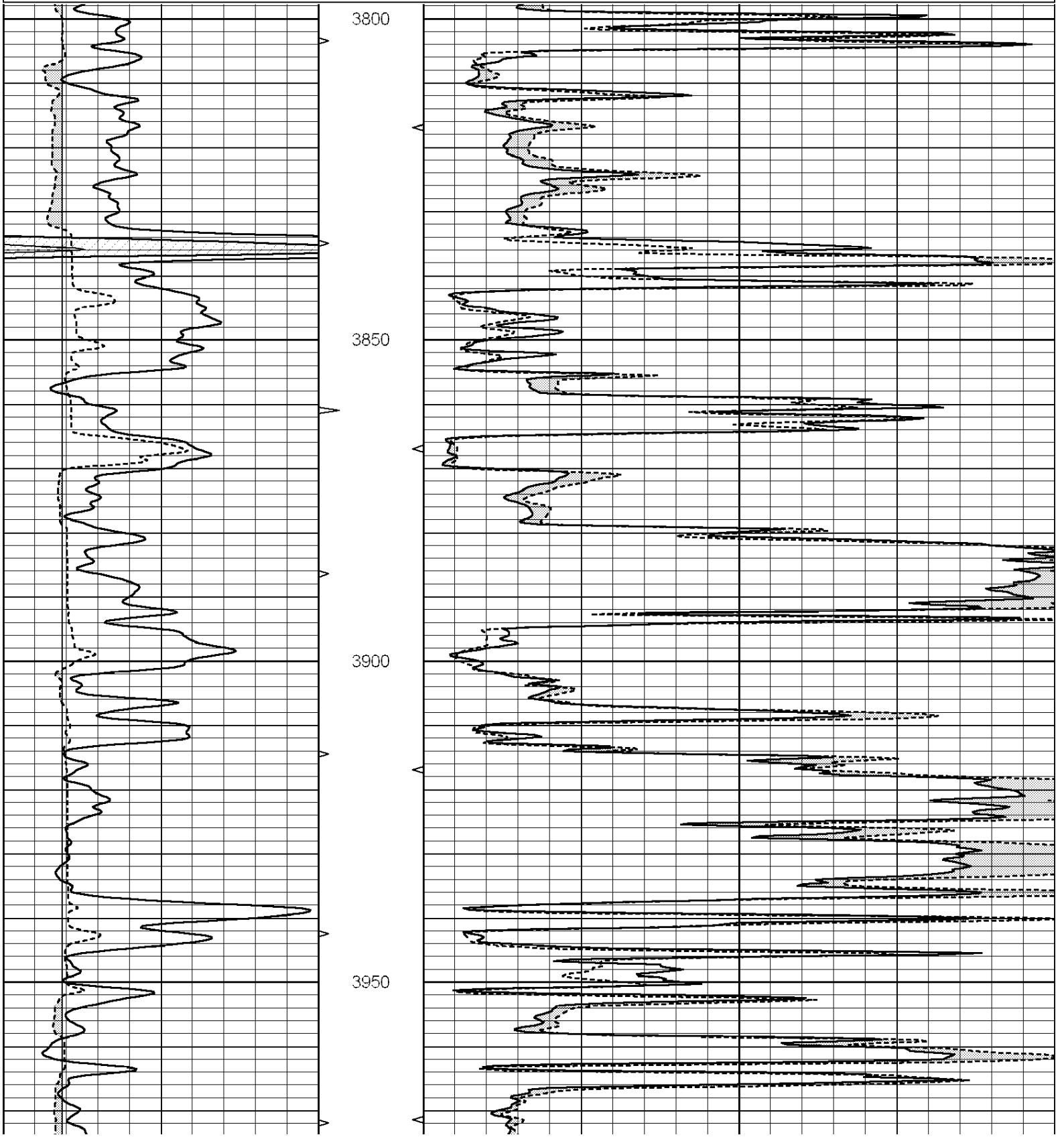


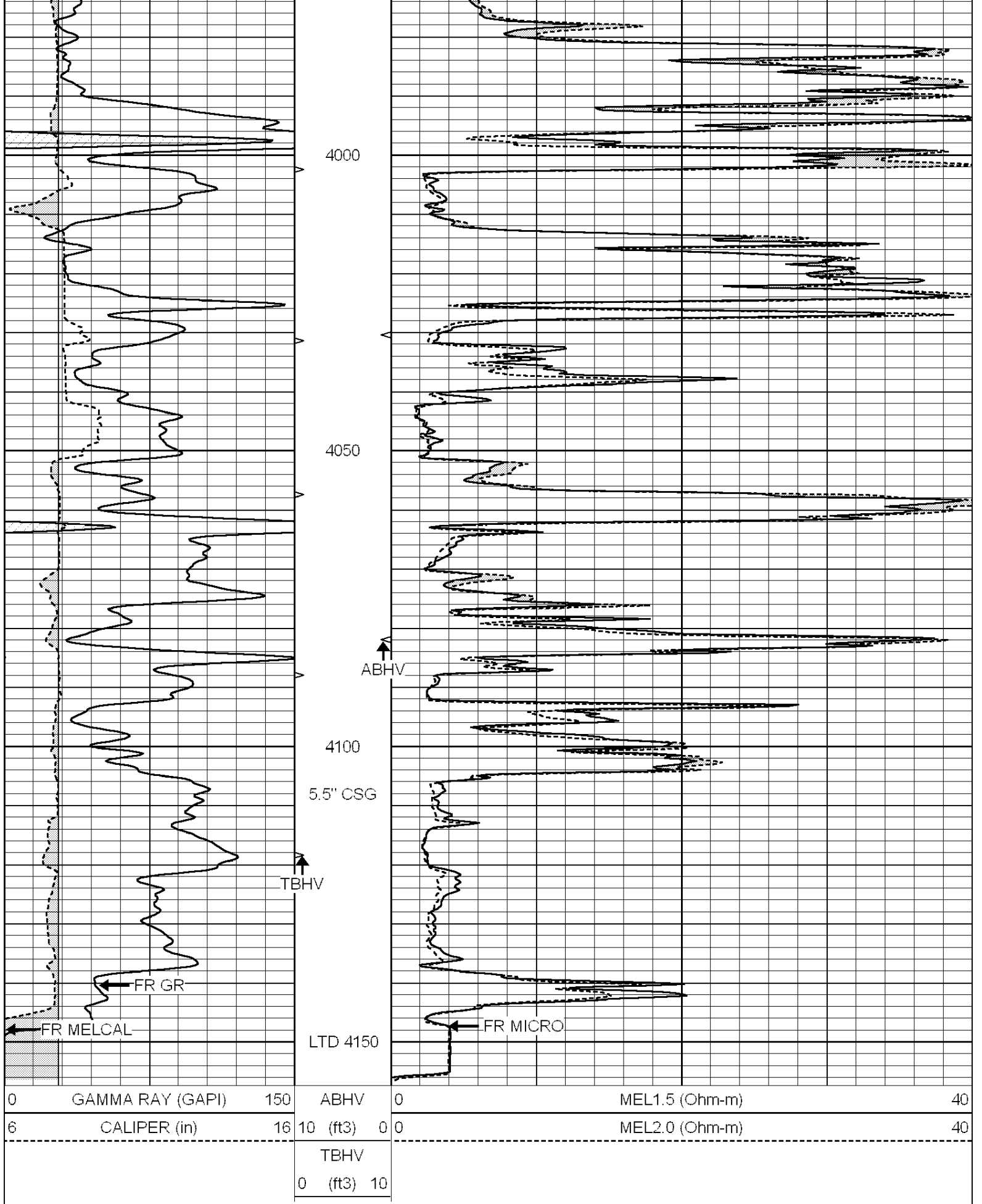
**SUPERIOR**  
Hays,  
Kansas

**MAIN SECTION**

Database File: 008072ddn.db  
 Dataset Pathname: pass6.1  
 Presentation Format: \_micro  
 Dataset Creation: Mon Mar 19 21:30:32 2012 by Calc Open-Cased 090629  
 Charted by: Depth in Feet scaled 1:240

0	GAMMA RAY (GAPI)	150	ABHV	0	MEL1.5 (Ohm-m)	40
6	CALIPER (in)	16	10 (ft3)	0	MEL2.0 (Ohm-m)	40
			TBHV			
			0 (ft3)			

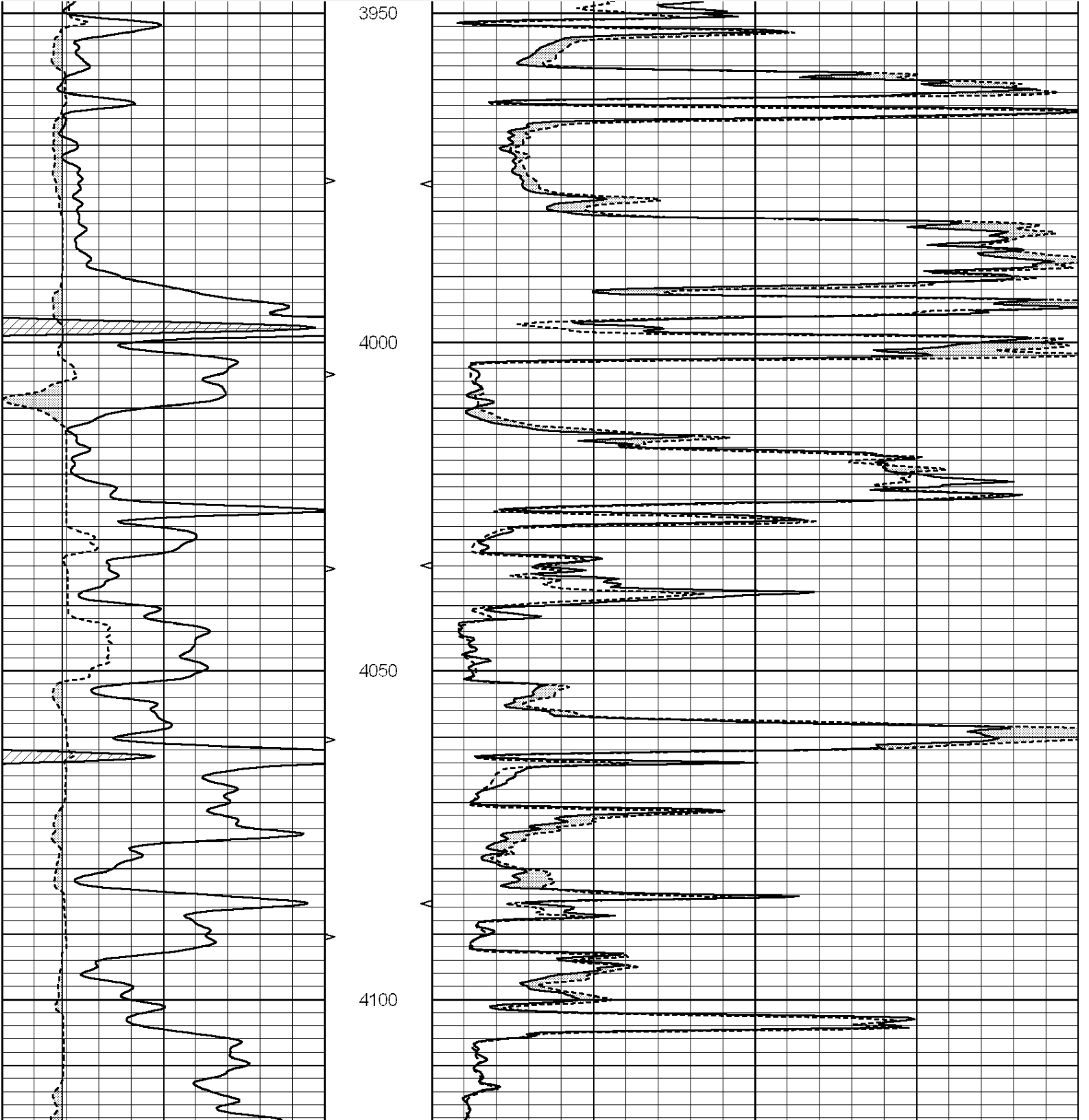


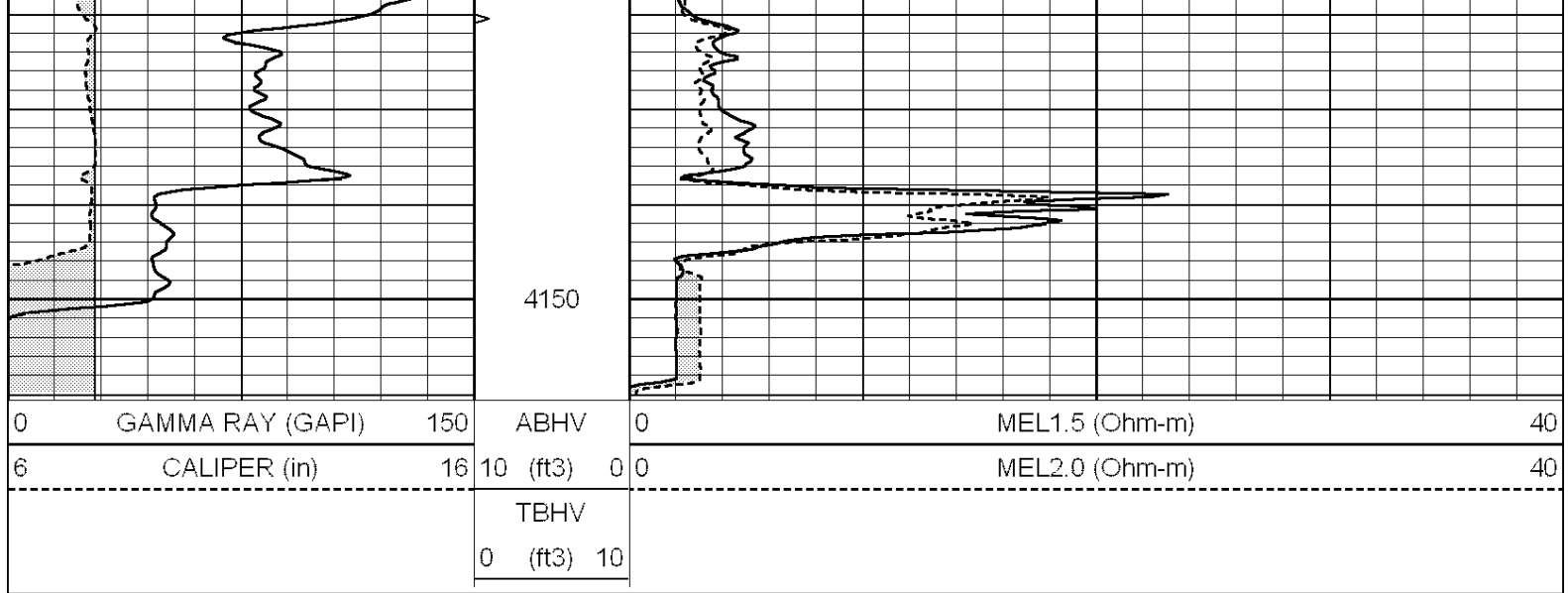




Database File: 008072ddn.db  
 Dataset Pathname: pass5.1  
 Presentation Format: \_micro  
 Dataset Creation: Mon Mar 19 21:26:24 2012 by Calc Open-Cased 090629  
 Charted by: Depth in Feet scaled 1:240

0	GAMMA RAY (GAPI)	150	ABHV	0	MEL1.5 (Ohm-m)	40
6	CALIPER (in)	16	10 (ft3)	0	MEL2.0 (Ohm-m)	40
			TBHV			
			0 (ft3)	10		





### Calibration Report

Database File: 008072ddn.db  
 Dataset Pathname: pass5.1  
 Dataset Creation: Mon Mar 19 21:26:24 2012 by Calc Open-Cased 090629

### MICRO Calibration Report

Serial Number: MICRO6  
 Tool Model: PROBE  
 Performed: Sun Mar 04 00:04:02 2012

Caliper Calibration: Gain=5.211 Offset=0.260  
 References Low Cal 8.000 High Cal 14.000  
 Readings 1.178 2.330

1.5" Calibration: Gain=30.075 Offset=-0.200  
 References Low Cal 0.000 High Cal 20.000  
 Readings 0.004 1.196

2" Calibration: Gain=27.041 Offset=0.300  
 References Low Cal 0.000 High Cal 20.000  
 Readings 0.006 0.913

### Gamma Ray Calibration Report

Serial Number: #8  
 Tool Model: OPEN  
 Performed: Mon Jun 13 16:56:43 2011  
 Calibrator Value: 150.0 GAPI  
 Background Reading: 0.0 cps  
 Calibrator Reading: 175.0 cps  
 Sensitivity: 0.8371 GAPI/cps