



SUPERIOR
Hays,
Kansas

SONIC
LOG

Company LOTUS OPERATING COMPANY, LLC.
Well MOLZ "L" #4
Field STRANATHAN
County BARBER State KANSAS

Company LOTUS OPERATING COMPANY, LLC.
Well MOLZ "L" #4
Field STRANATHAN
County BARBER
State KANSAS

Location: API #: 15-007-23693
3960' FSL & 1485' FEL
SEC 1 TWP 35S RGE 12W
Permanent Datum GROUND LEVEL Elevation 1417
Log Measured From KELLY BUSHING 13' A.G.L.
Drilling Measured From KELLY BUSHING
Other Services
CDL/CNL/PE
DIL/MICRO
Elevation
K.B. 1430
D.F.
G.L. 1417

Date	1-9-12
Run Number	TWO
Depth Driller	5540
Depth Logger	5536
Bottom Logged Interval	5528
Top Log Interval	3700
Casing Driller	270
Casing Logger	270
Bit Size	7.875
Type Fluid in Hole	CHEMICAL MUD
Density / Viscosity	9.4 / 50
pH / Fluid Loss	11.0 / 9.2
Source of Sample	FLOWLINE
Rim @ Meas. Temp	0.85 @ 74F
Rmf @ Meas. Temp	0.64 @ 74F
Rmc @ Meas. Temp	1.02 @ 74F
Source of Rmf / Rmc	MEASURED
Rim @ BHT	.480 @ 130F
Time Circulation Stopped	3 HOURS
Time Logger on Bottom	2:45 P.M.
Maximum Recorded Temperature	130F
Equipment Number	860
Location	HAYS, KS.
Recorded By	RUPP
Witnessed By	TIM HELLMAN

<<< Fold Here >>>

All interpretations are opinions based on inferences from electrical or other measurements and we cannot and do not guarantee the accuracy or correctness of any interpretation, and we shall not, except in the case of gross or willful negligence on our part, be liable or responsible for any loss, costs, damages, or expenses incurred or sustained by anyone resulting from any interpretation made by any of our officers, agents or employees. These interpretations are also subject to our general terms and conditions set out in our current Price Schedule.

Comments

SUPERIOR WELL SERVICES
785-628-6395
THANK YOU FOR YOUR BUSINESS
DIRECTIONS: MEDICINE LODGE, S TO DRIFTWOOD RD., 1/2W. S INTO.

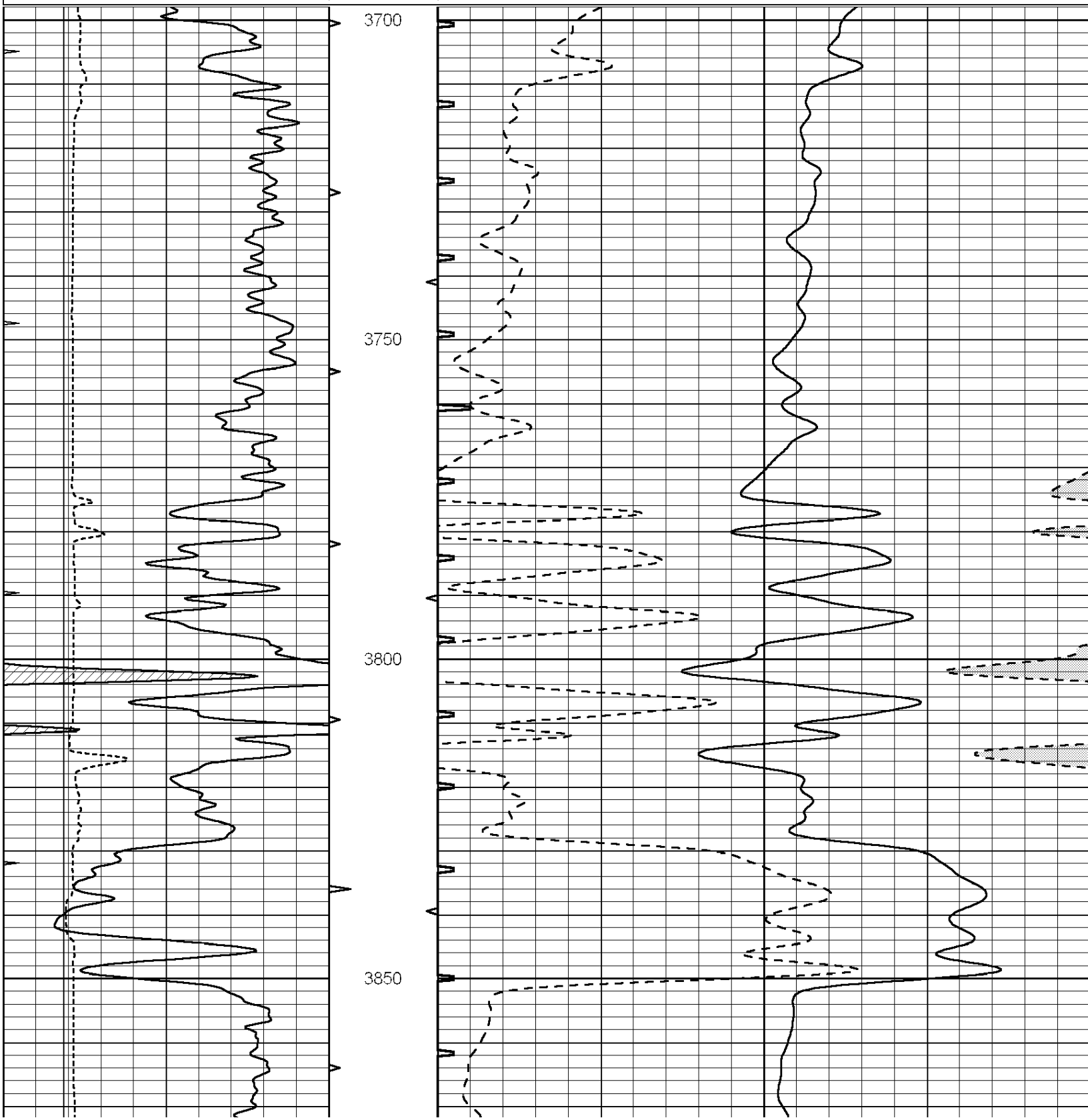


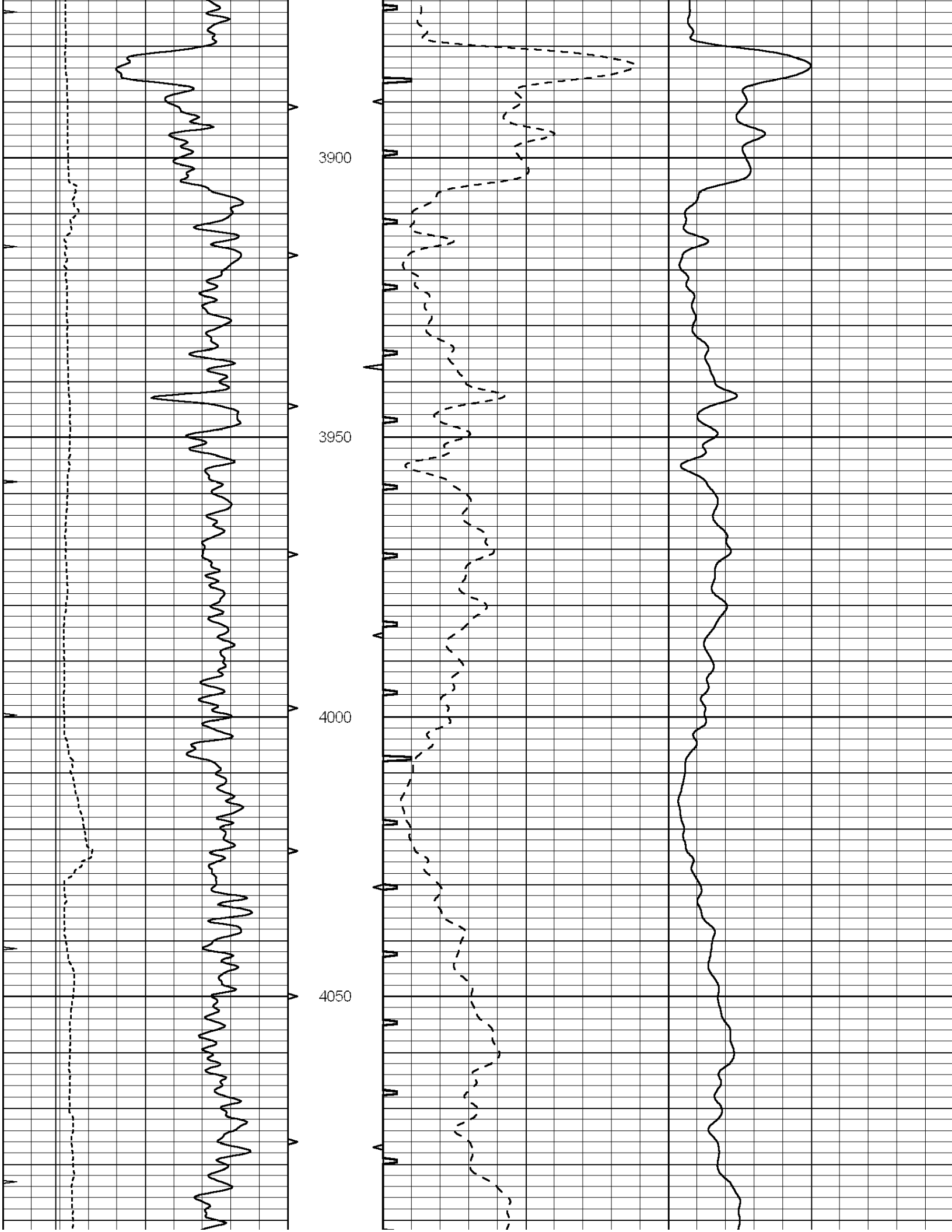
SUPERIOR
Hays,
Kansas

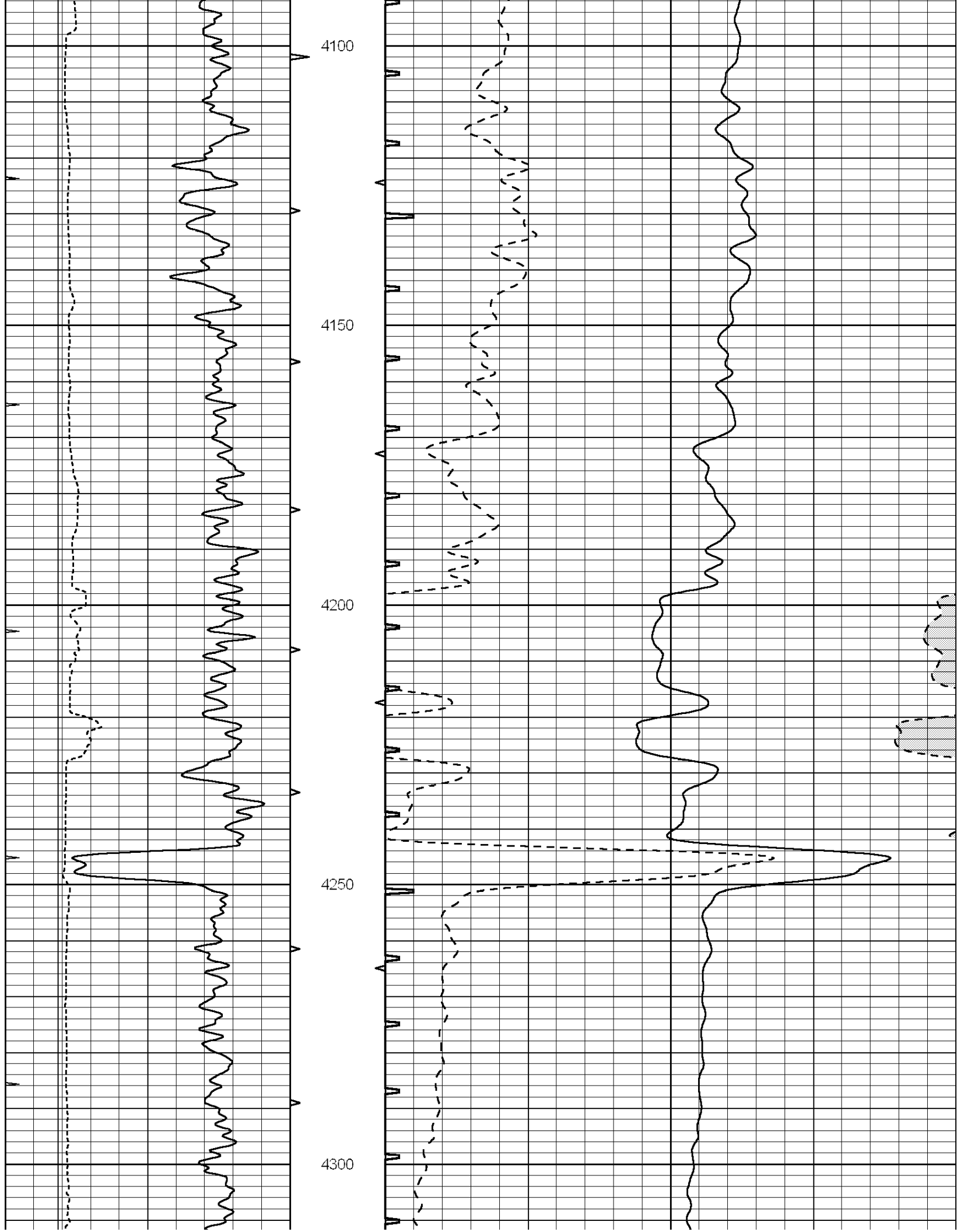
MAIN SECTION

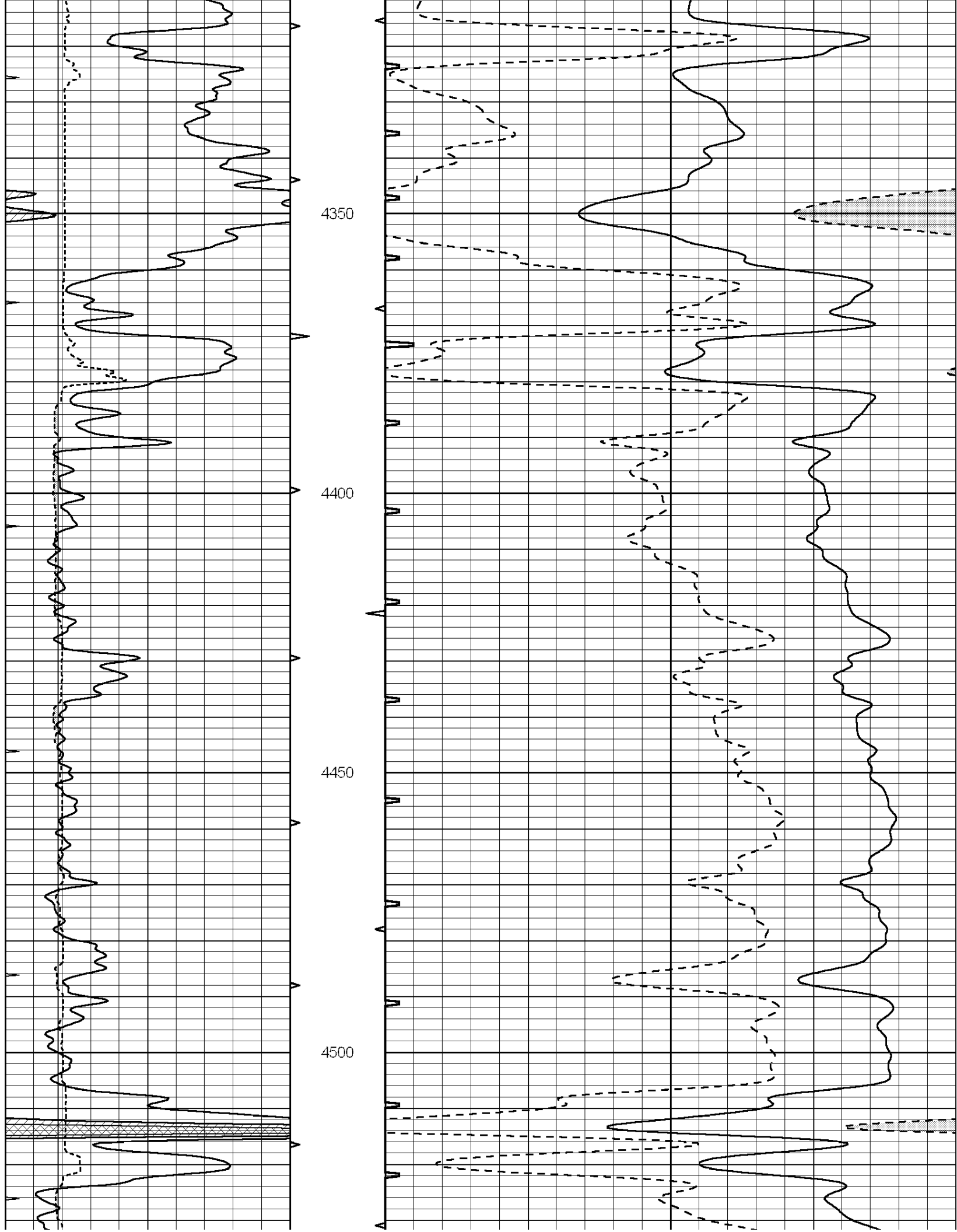
Database File: 008453pdn.db
 Dataset Pathname: pass5.1
 Presentation Format: slt
 Dataset Creation: Mon Jan 09 18:18:37 2012 by Calc Open-Cased 090629
 Charted by: Depth in Feet scaled 1:240

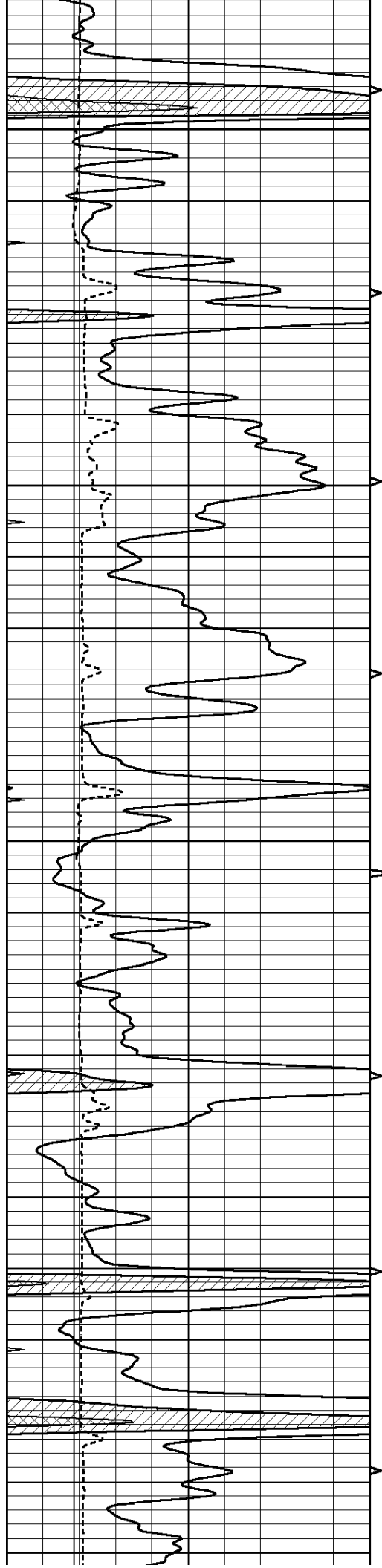
0	GAMMA RAY (GAPI)	150	ABHV	140	DELTA TIME (usec/ft)	40
6	MELCAL (in)	16	10 (ft3)	0 30	SONIC POROSITY (pu)	-10
0	MINMK	20	TBHV	0	ITT (msec)	20
			0 (ft3)	10		











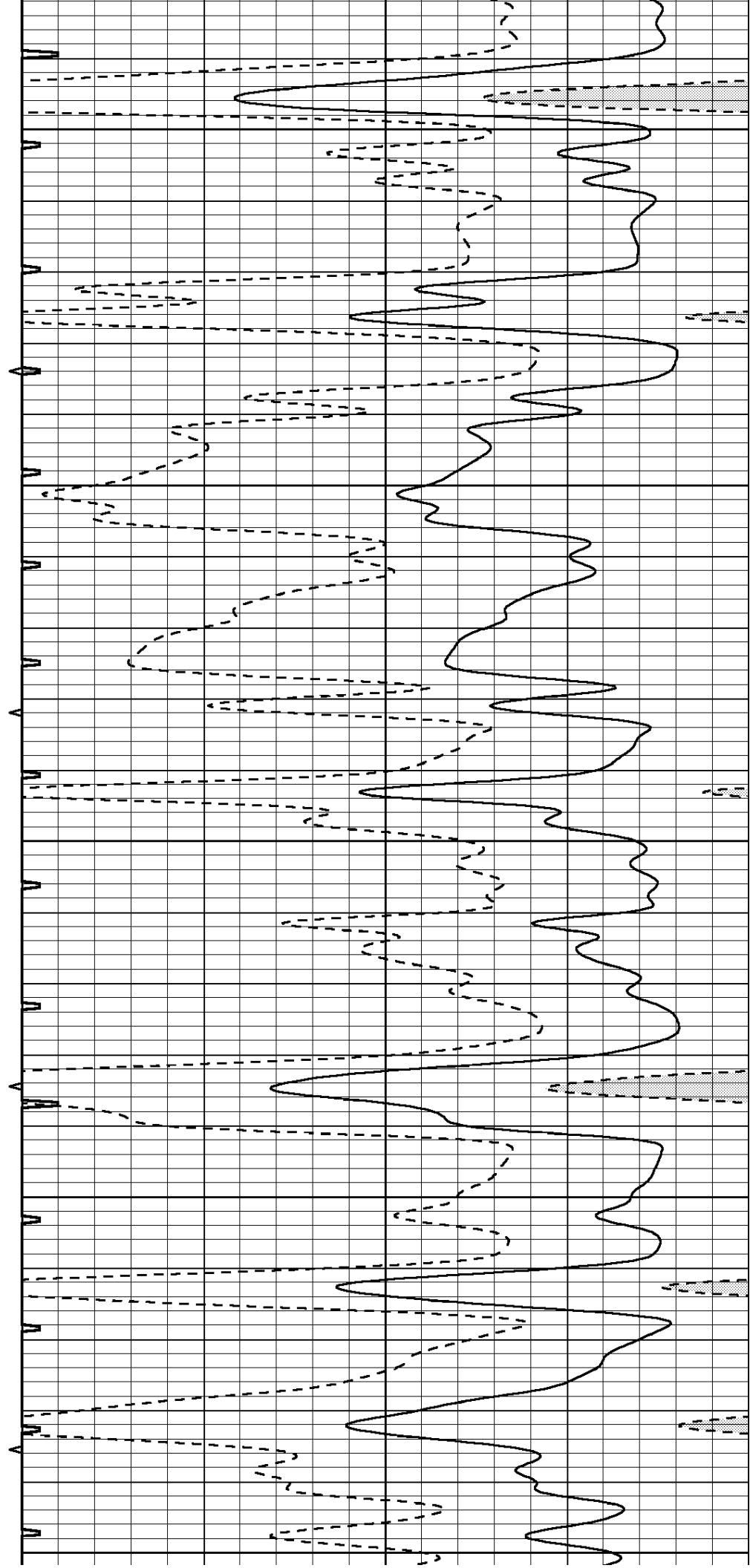
4550

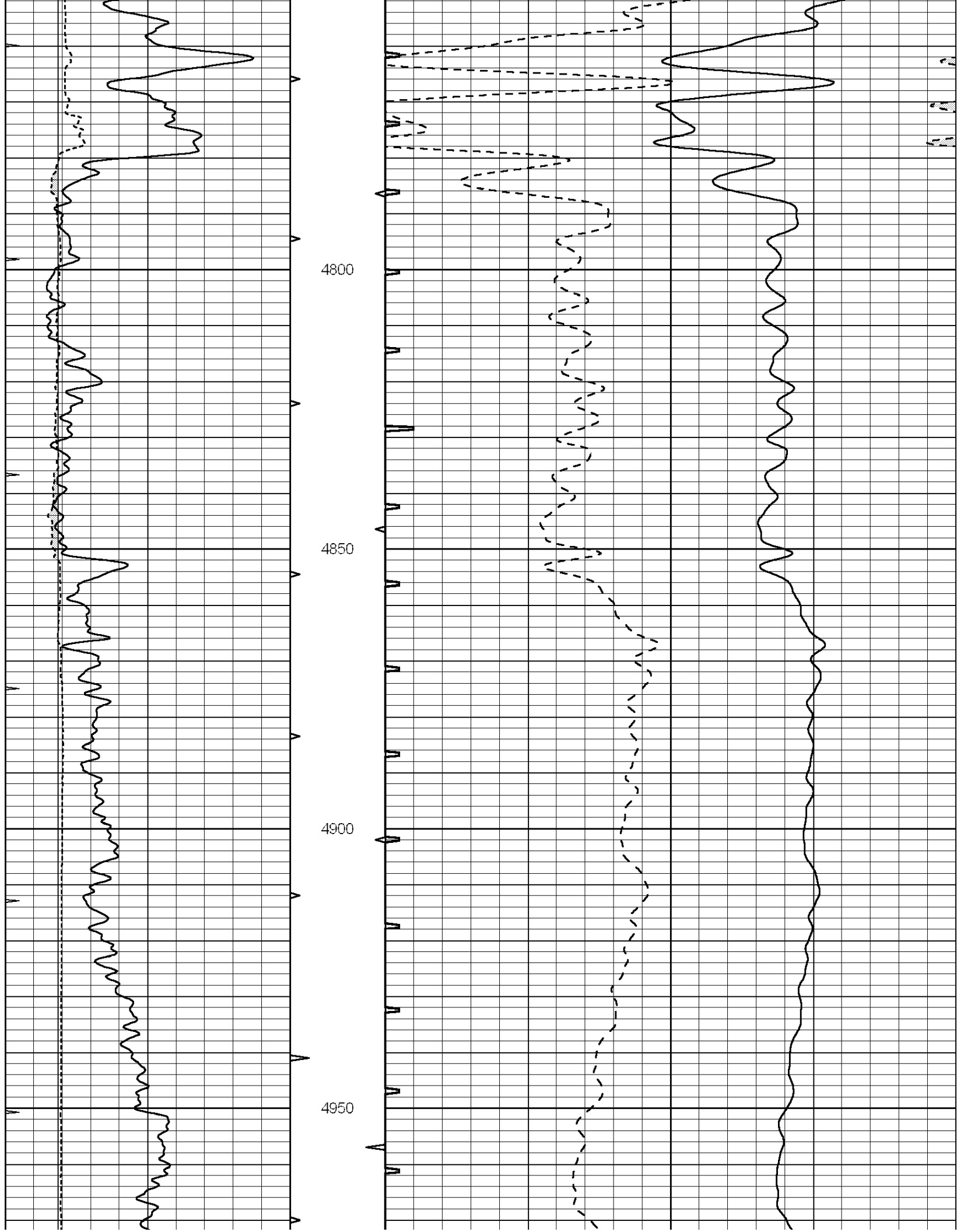
4600

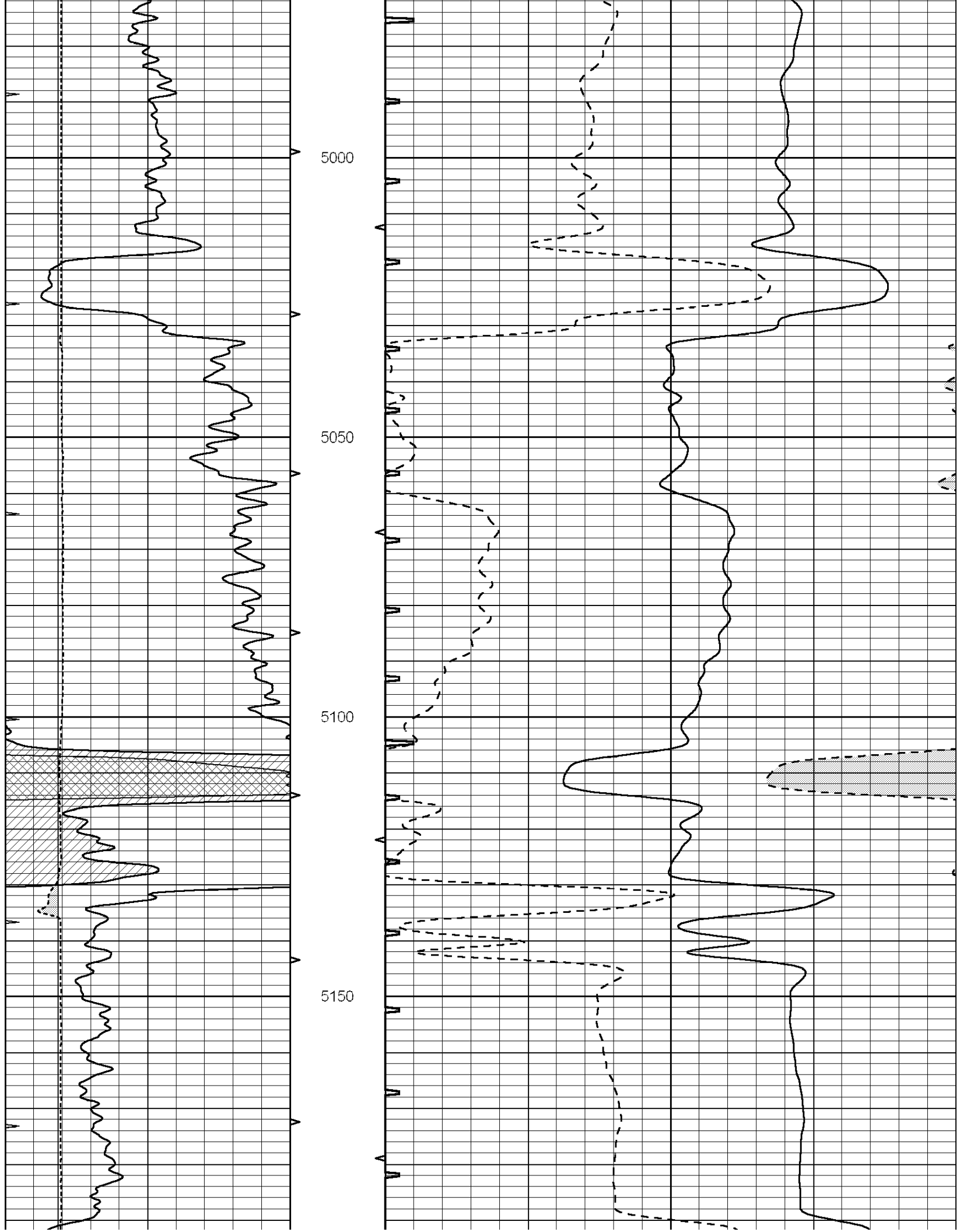
4650

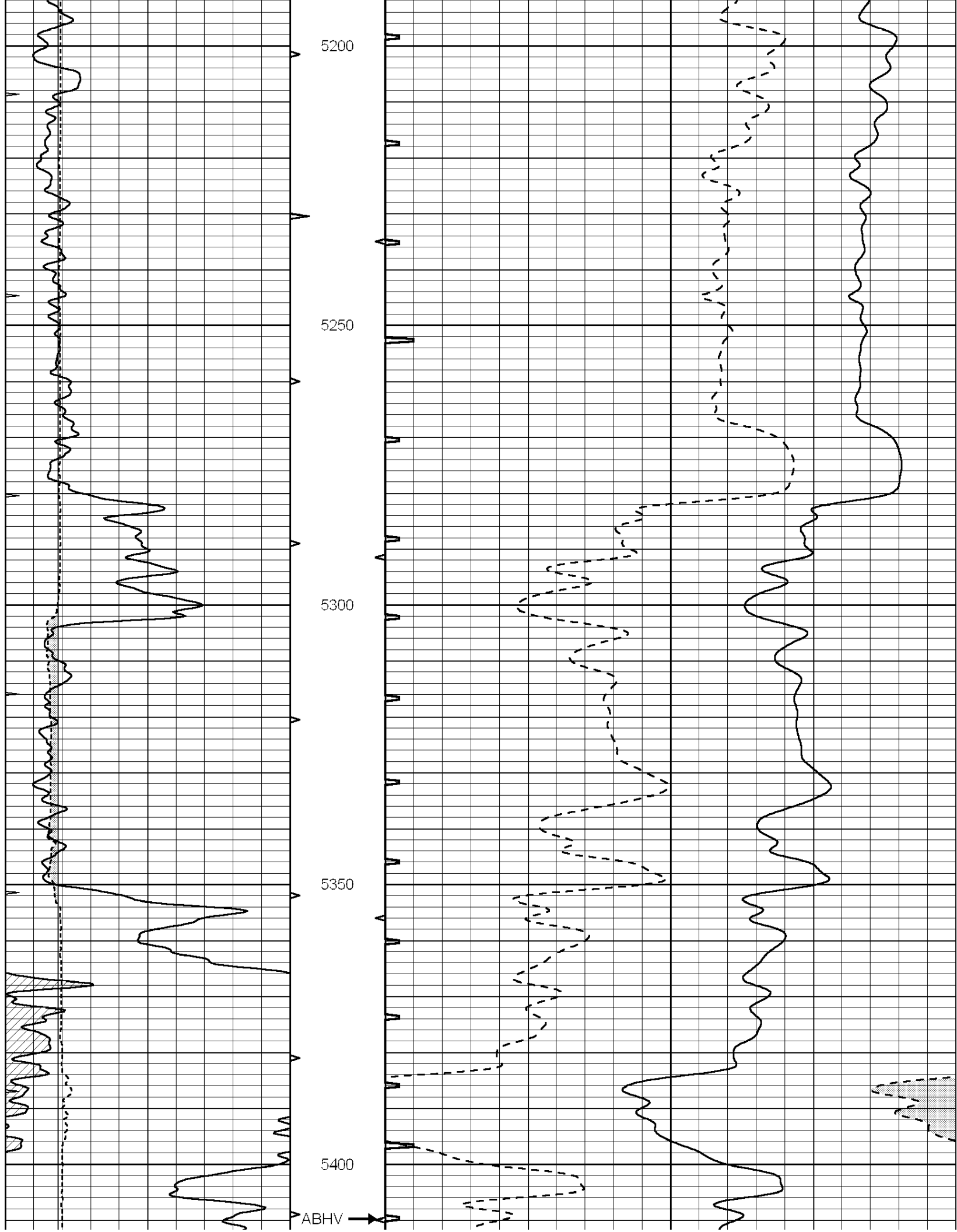
4700

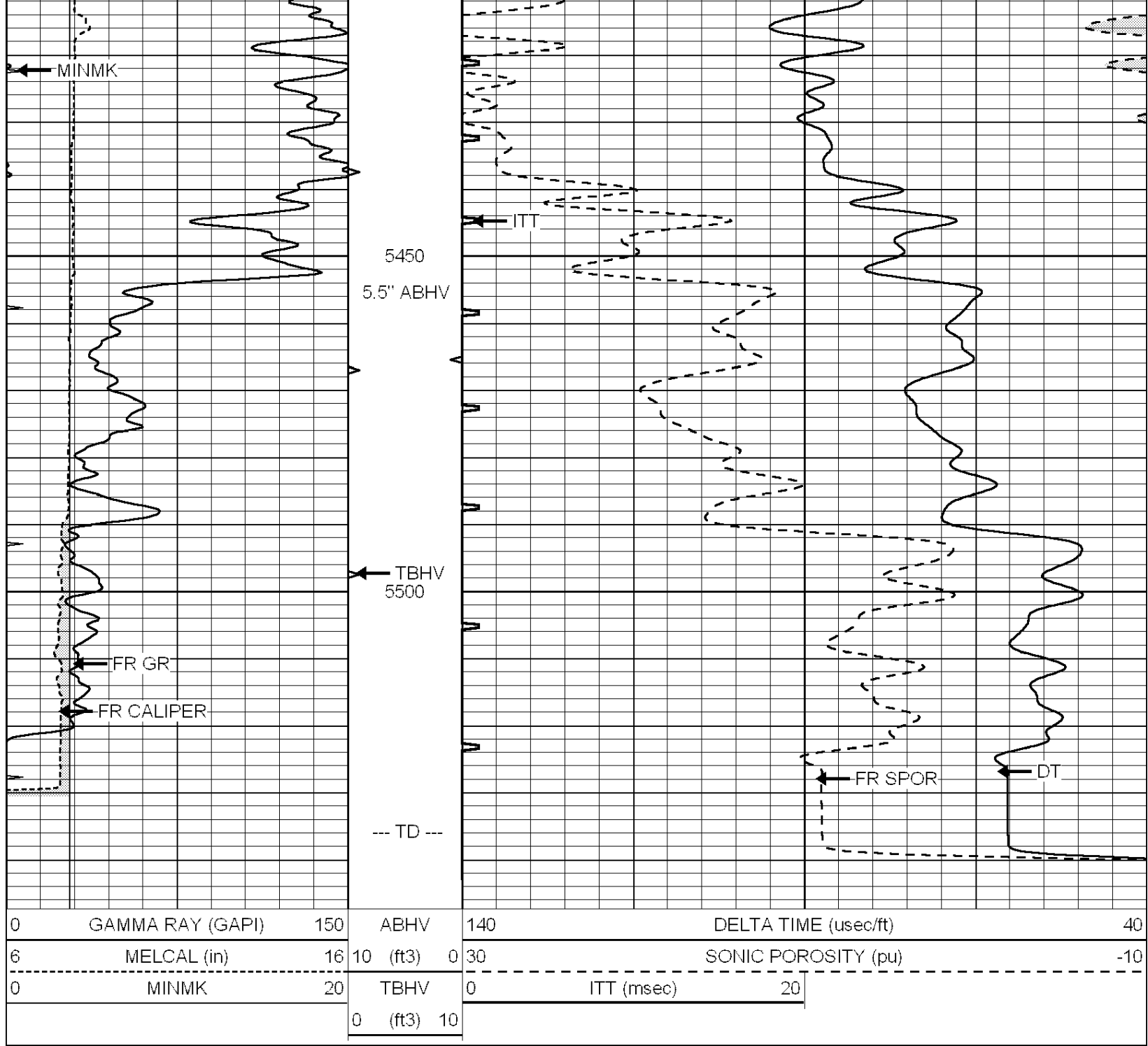
4750









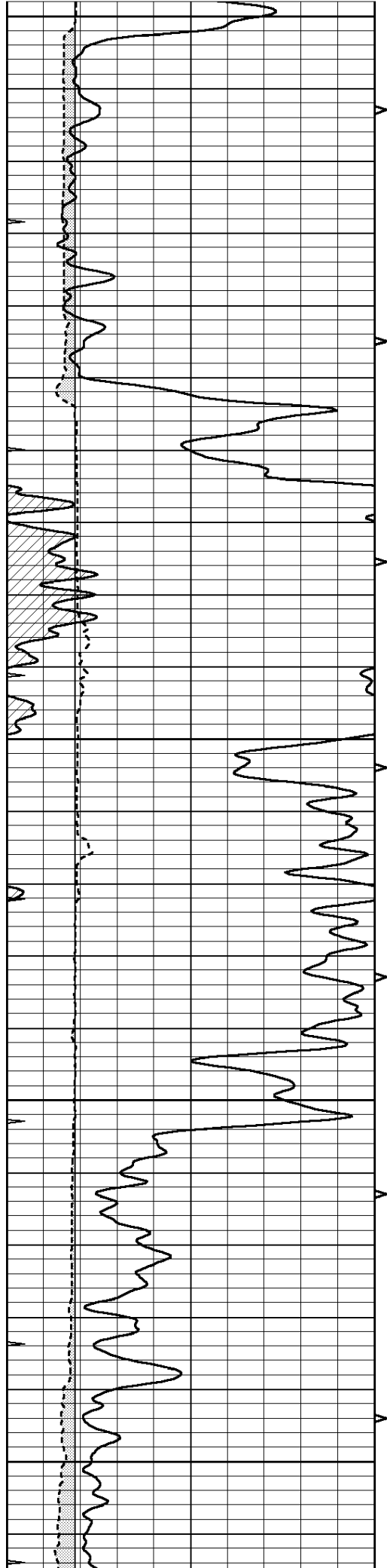


SUPERIOR
Hays,
Kansas

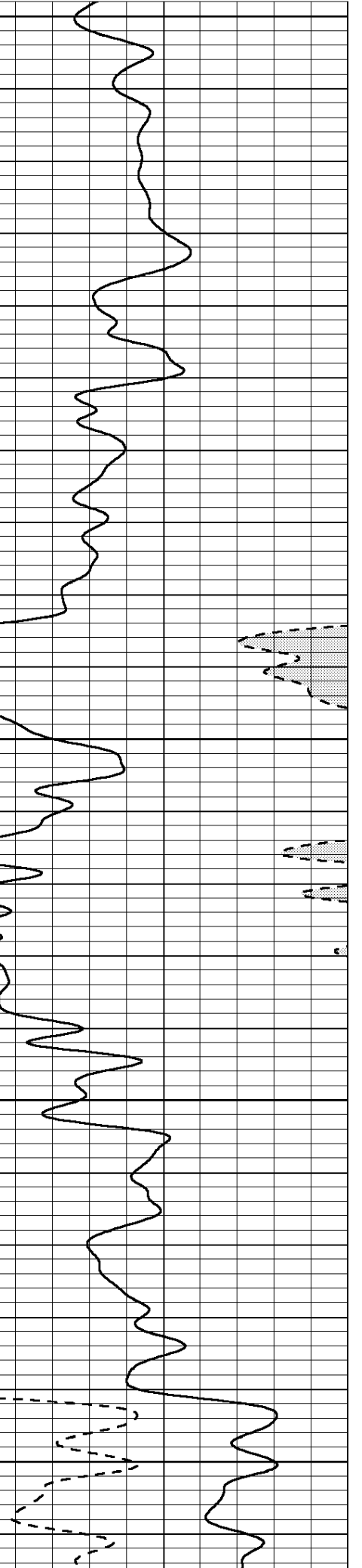
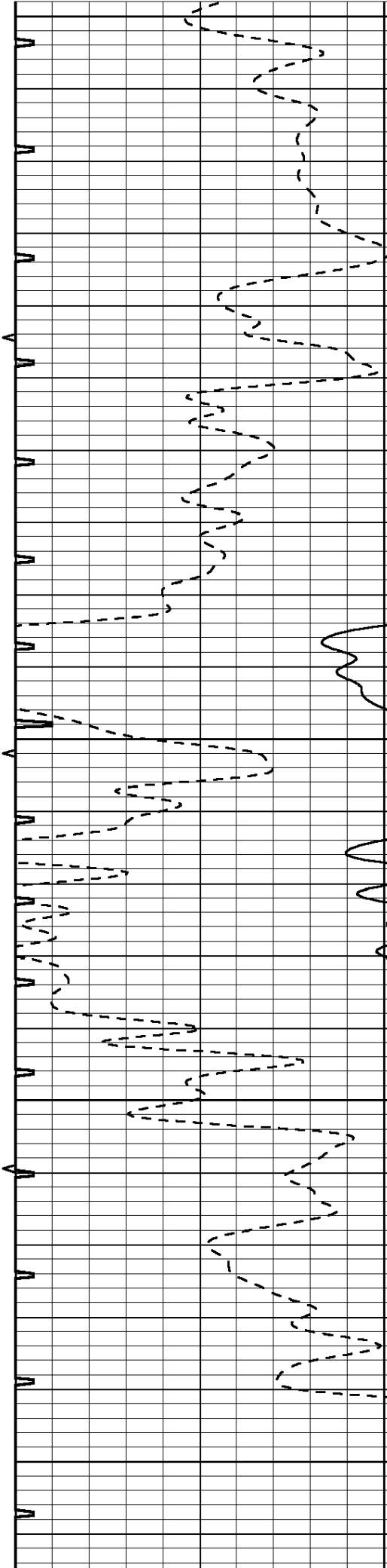
REPEAT SECTION

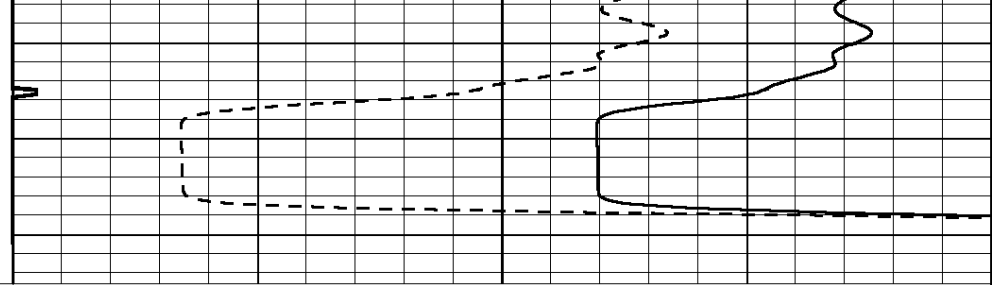
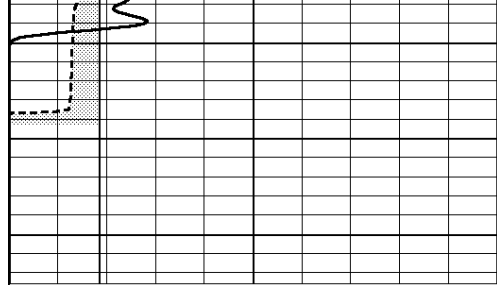
Database File: 008453pdn.db
 Dataset Pathname: pass4.A
 Presentation Format: slt
 Dataset Creation: Mon Jan 09 18:13:19 2012 by Calc Open-Cased 090629
 Charted by: Depth in Feet scaled 1:240

0	GAMMA RAY (GAPI)	150	ABHV	140	DELTA TIME (usec/ft)	40
6	MELCAL (in)	16	10 (ft3)	0 30	SONIC POROSITY (pu)	-10
0	MINMK	20	TBHV	0	ITT (msec)	20
			0 (ft3)	10		



5300
5350
5400
5450
5500





0	GAMMA RAY (GAPI)	150	ABHV	140	DELTA TIME (usec/ft)	40
6	MELCAL (in)	16	10 (ft3) 0	30	SONIC POROSITY (pu)	-10
0	MINMK	20	TBHV	0	ITT (msec)	20
			0 (ft3) 10			