



**SUPERIOR
Hays,
Kansas**

**MICRO
LOG**

Company LOTUS OPERATING COMPANY, LLC.
Well MOLZ "L" #4
Field STRANATHAN
County BARBER State KANSAS

Company LOTUS OPERATING COMPANY, LLC.
Well MOLZ "L" #4
Field STRANATHAN
County BARBER
State KANSAS

Location: API #: 15-007-23693
3960' FSL & 1485' FEL
SEC 1 TWP 35S RGE 12W
Permanent Datum GROUND LEVEL Elevation 1417
Log Measured From KELLY BUSHING 13' A.G.L.
Drilling Measured From KELLY BUSHING
Other Services
CDL/CNL/PE
DIL/SONIC
Elevation
K.B. 1430
D.F.
G.L. 1417

| | |
|------------------------------|--------------|
| Date | 1-9-12 |
| Run Number | TWO |
| Depth Driller | 5540 |
| Depth Logger | 5536 |
| Bottom Logged Interval | 5518 |
| Top Log Interval | 3700 |
| Casing Driller | 270 |
| Casing Logger | 270 |
| Bit Size | 7.875 |
| Type Fluid in Hole | CHEMICAL MUD |
| Density / Viscosity | 9.4 / 50 |
| pH / Fluid Loss | 11.0 / 9.2 |
| Source of Sample | FLOWLINE |
| Rim @ Meas. Temp | 0.85 @ 74F |
| Rmf @ Meas. Temp | 0.64 @ 74F |
| Rmc @ Meas. Temp | 1.02 @ 74F |
| Source of Rmf / Rmc | MEASURED |
| Rim @ BHT | .480 @ 130F |
| Time Circulation Stopped | 3 HOURS |
| Time Logger on Bottom | 2:45 P.M. |
| Maximum Recorded Temperature | 130F |
| Equipment Number | 860 |
| Location | HAYS, KS. |
| Recorded By | RUPP |
| Witnessed By | TIM HELLMAN |

<<< Fold Here >>>

All interpretations are opinions based on inferences from electrical or other measurements and we cannot and do not guarantee the accuracy or correctness of any interpretation, and we shall not, except in the case of gross or willful negligence on our part, be liable or responsible for any loss, costs, damages, or expenses incurred or sustained by anyone resulting from any interpretation made by any of our officers, agents or employees. These interpretations are also subject to our general terms and conditions set out in our current Price Schedule.

Comments

SUPERIOR WELL SERVICES
785-628-6395
THANK YOU FOR YOUR BUSINESS
DIRECTIONS: MEDICINE LODGE, S TO DRIFTWOOD RD., 1/2W. S INTO.



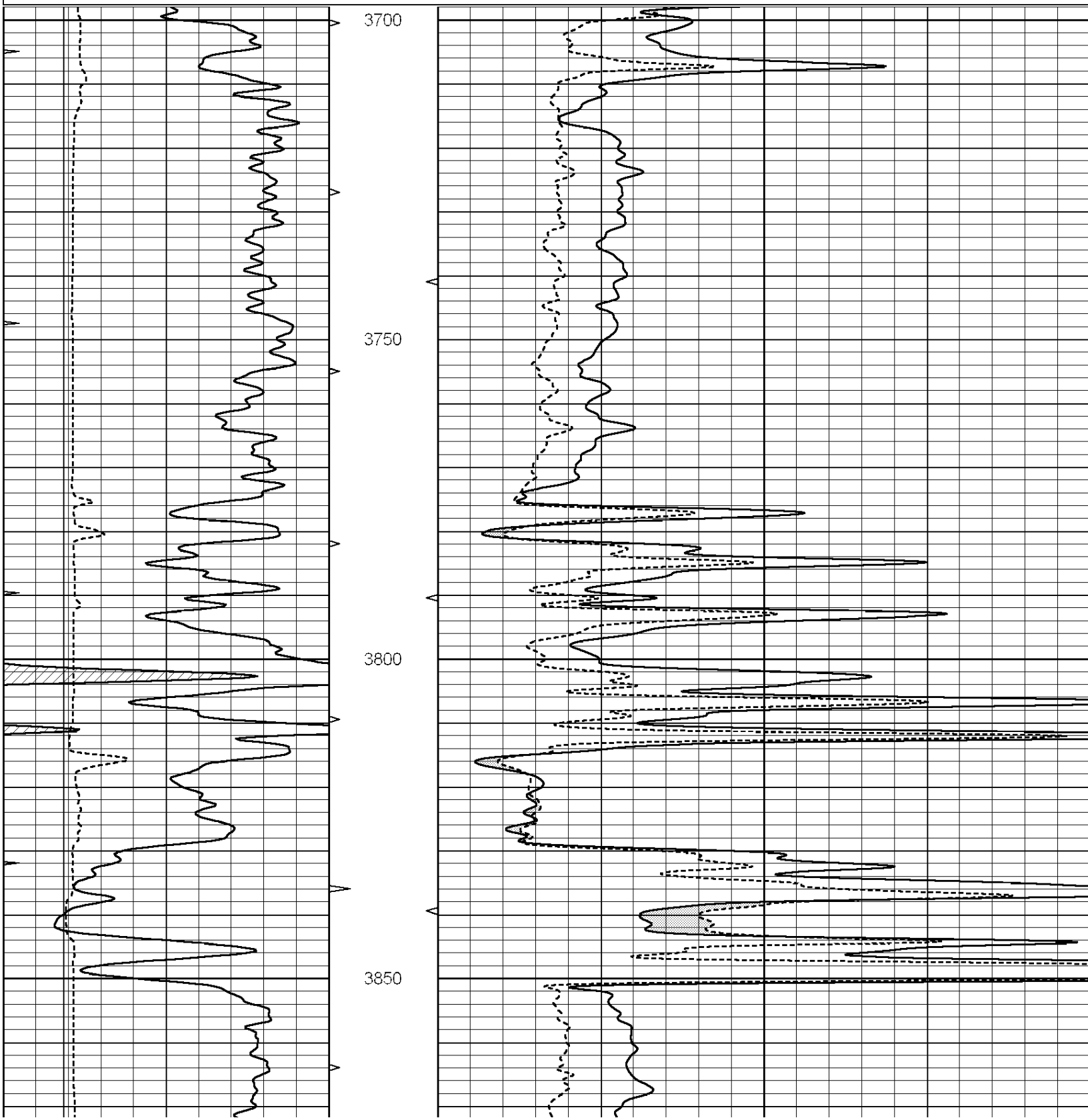
**SUPERIOR
Hays,
Kansas**

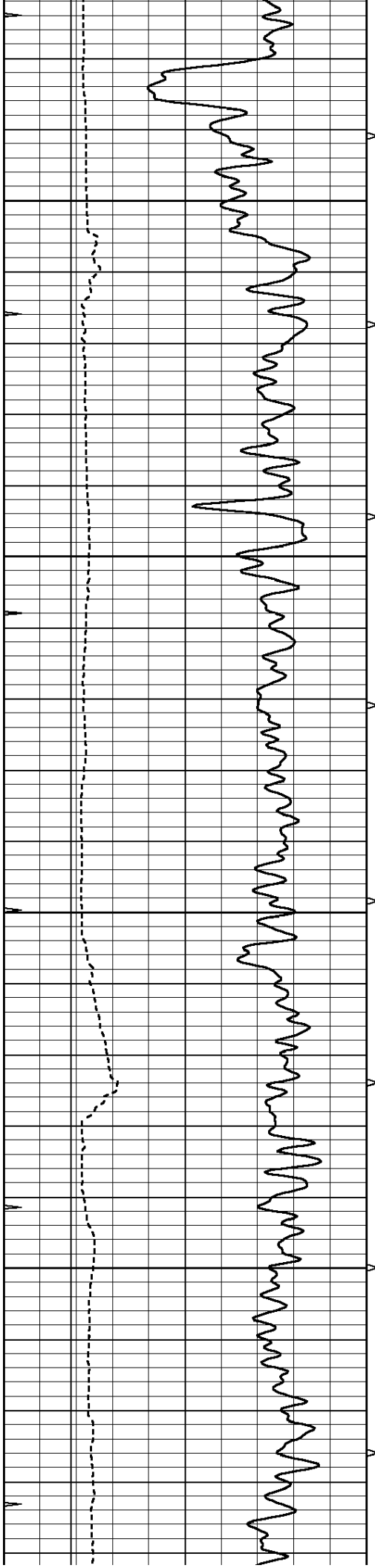
MAIN SECTION

Database File: 008453pdn.db
 Dataset Pathname: pass5.1A
 Presentation Format: micro
 Dataset Creation: Mon Jan 09 19:19:26 2012
 Charted by: Depth in Feet scaled 1:240

| | | |
|---|------------------|-----|
| 0 | GAMMA RAY (GAPI) | 150 |
| 6 | MELCAL (in) | 16 |
| 0 | MINMK | 20 |

| | | |
|---|----------------|----|
| 0 | MEL1.5 (Ohm-m) | 20 |
| 0 | MEL2.0 (Ohm-m) | 20 |



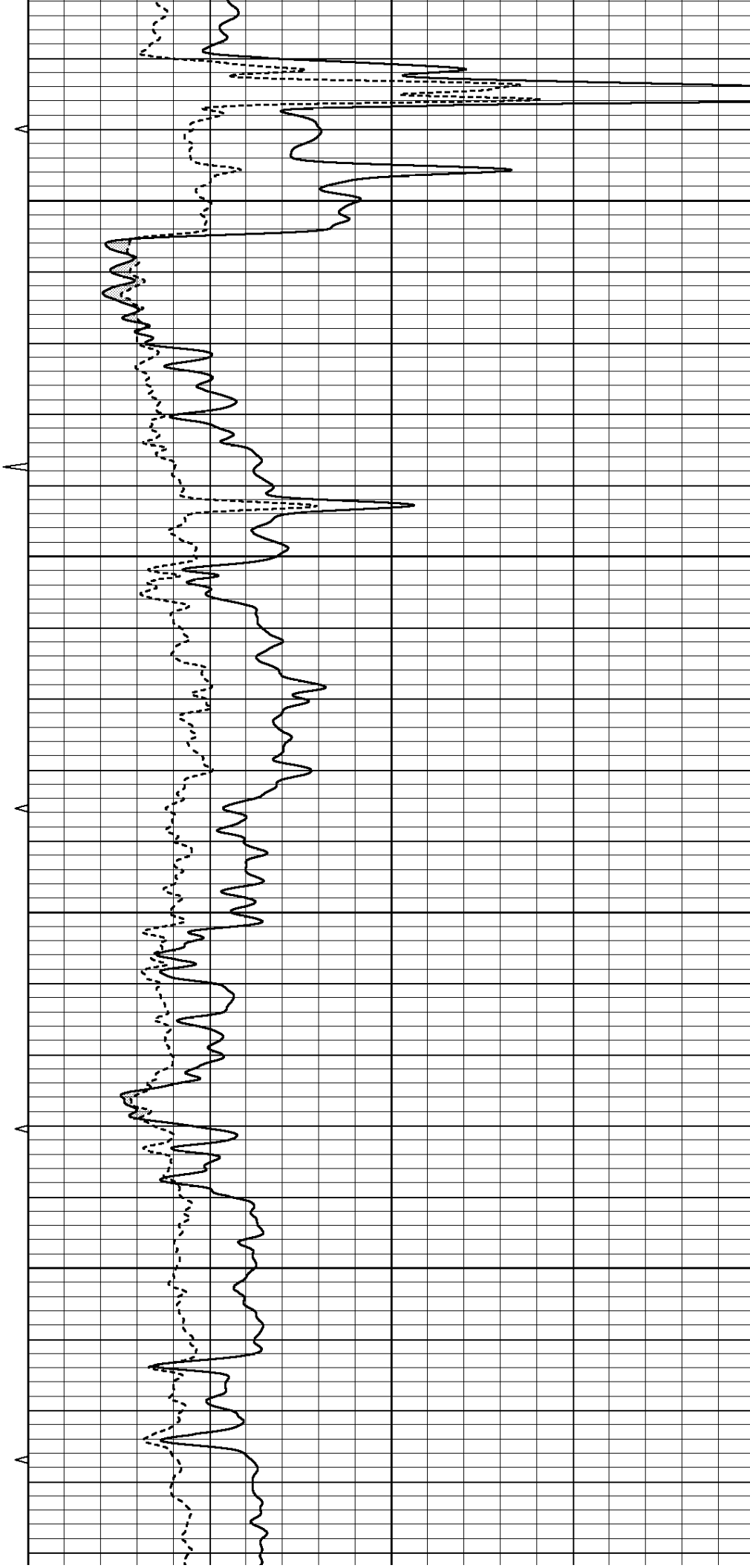


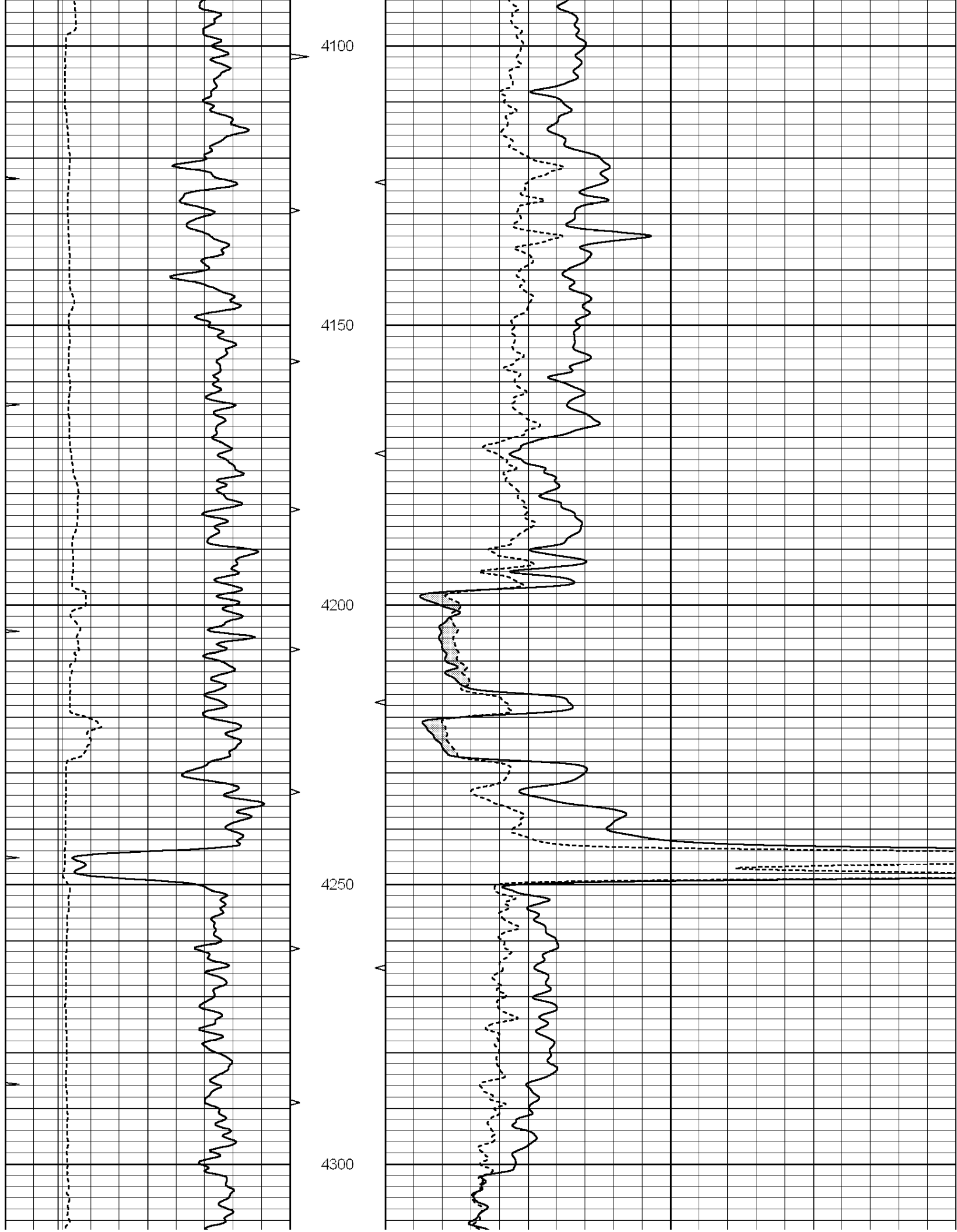
3900

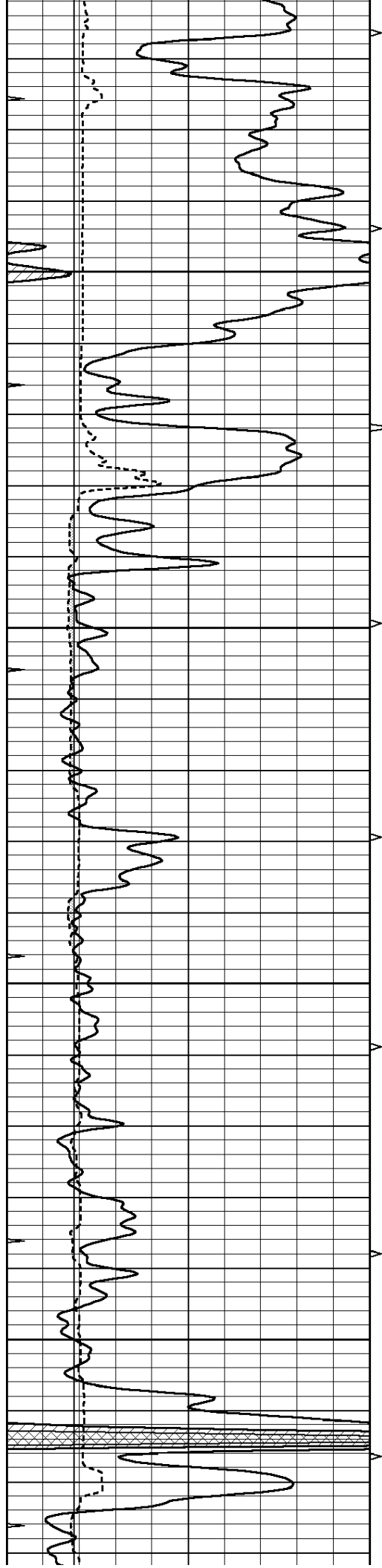
3950

4000

4050





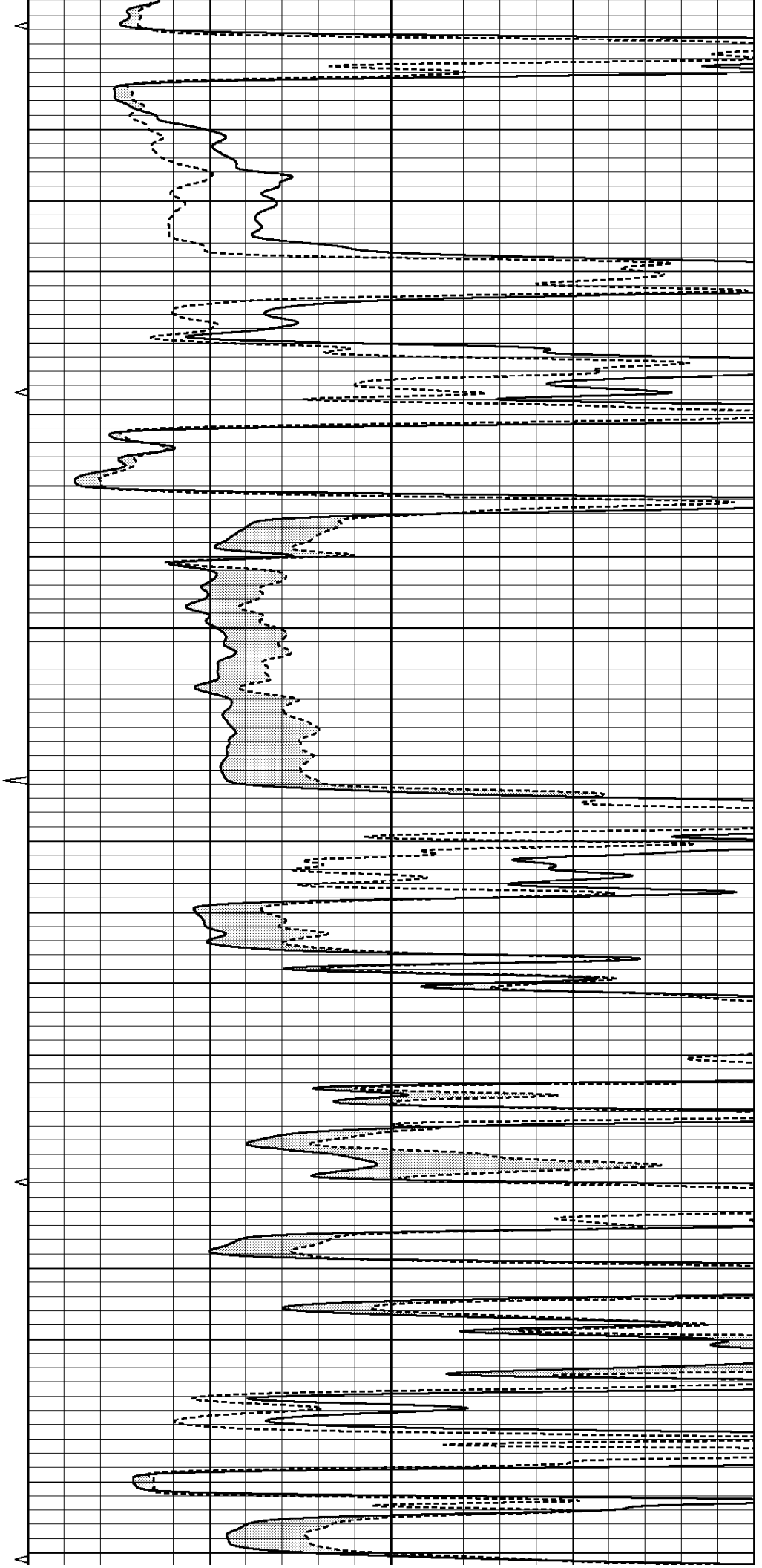


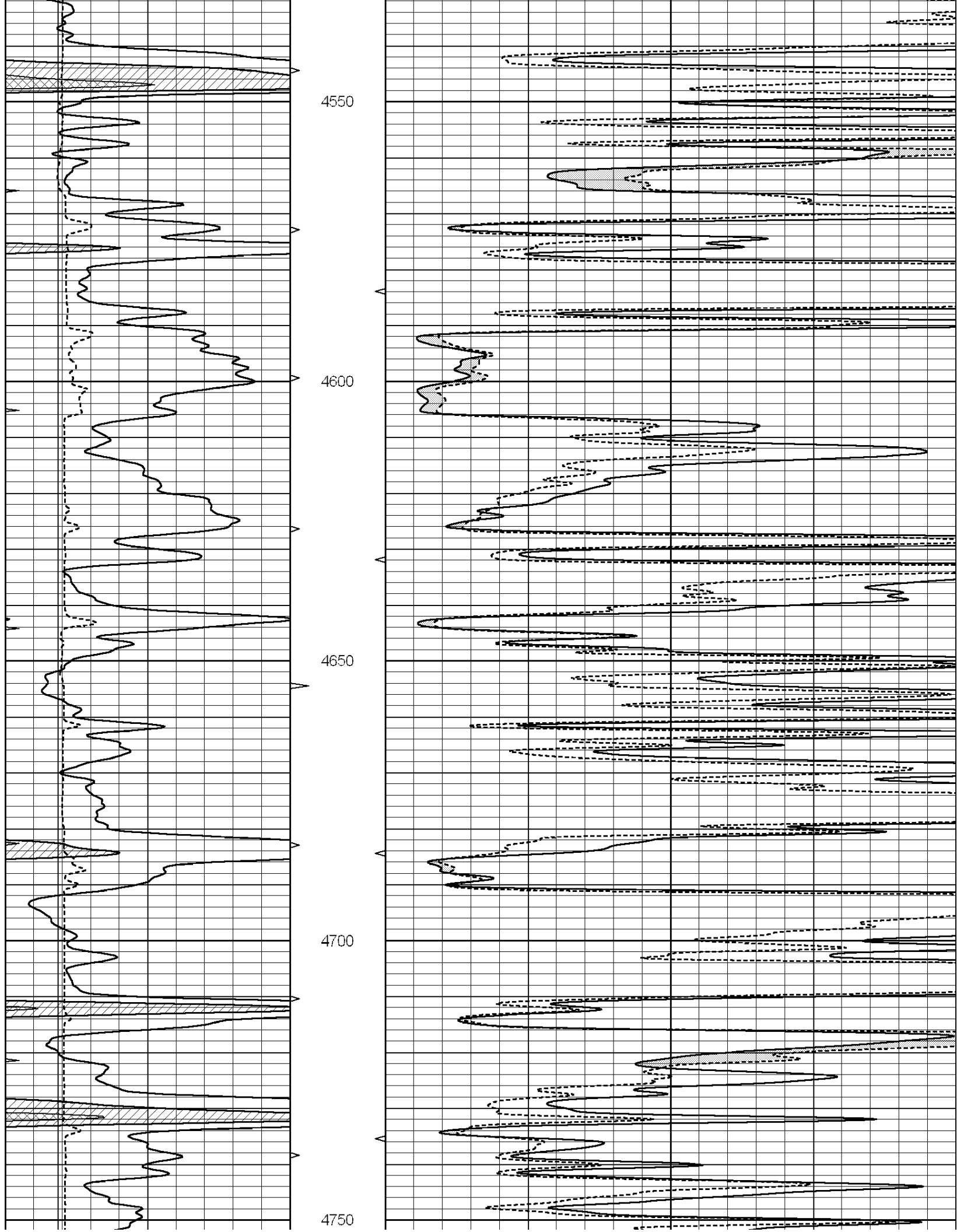
4350

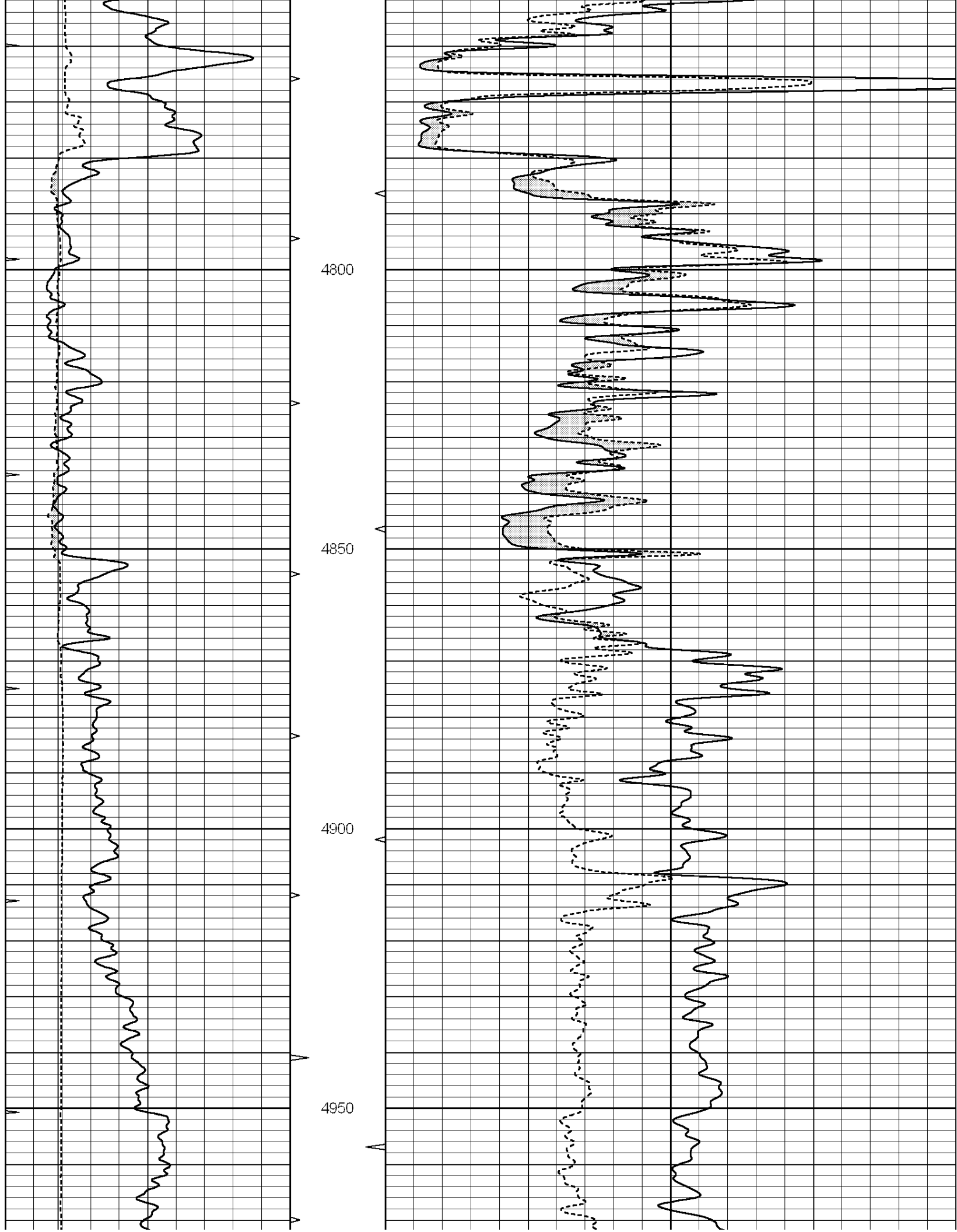
4400

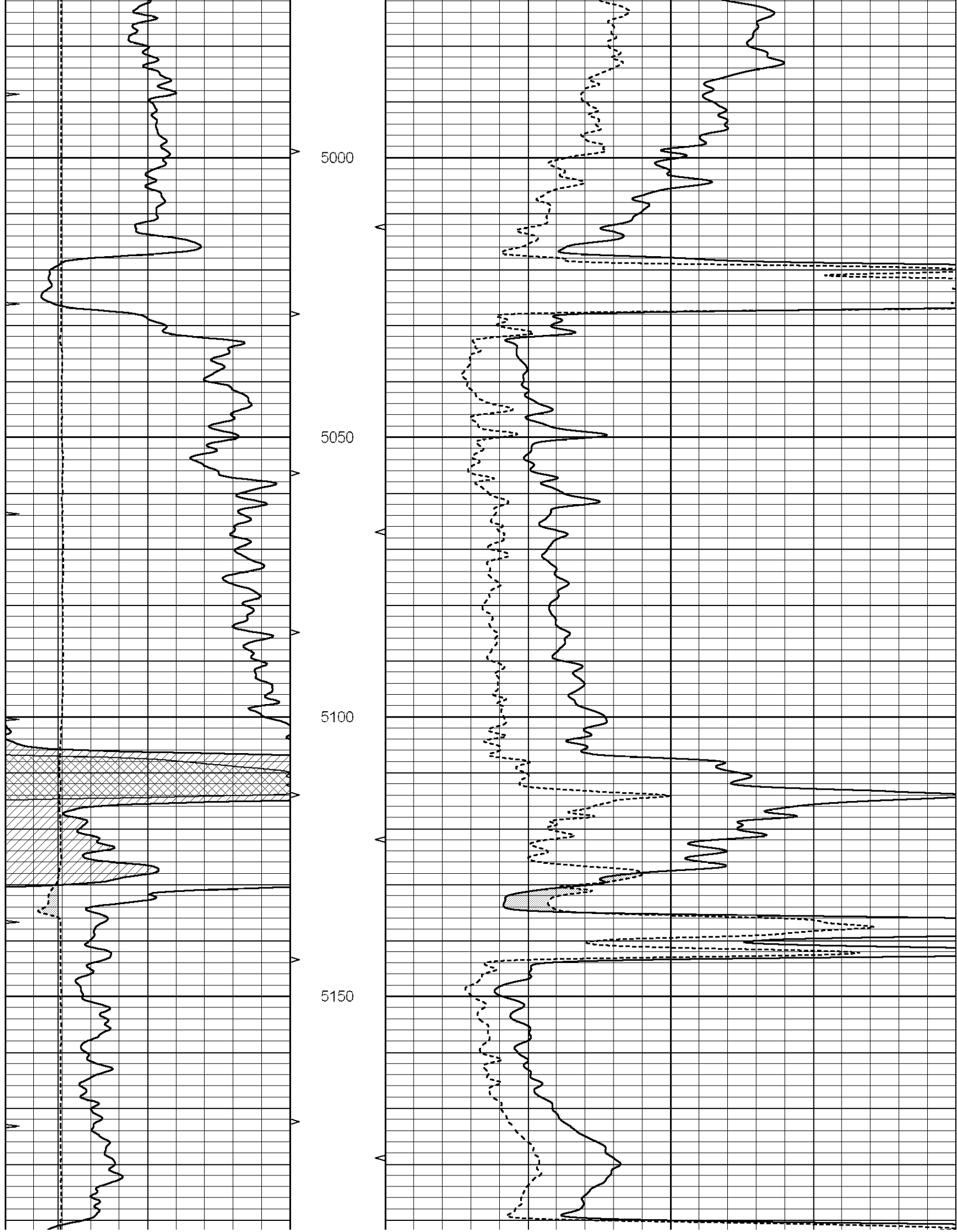
4450

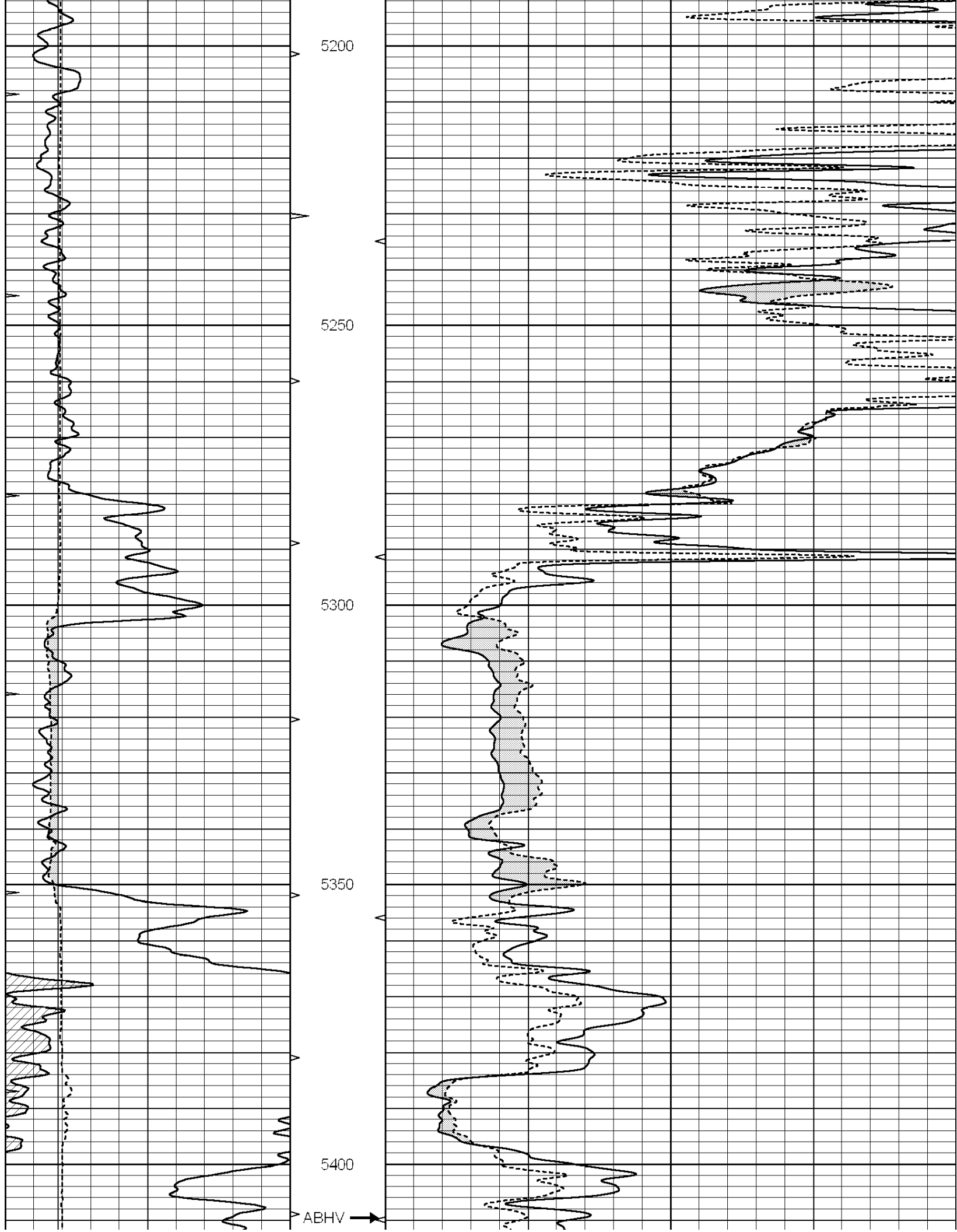
4500

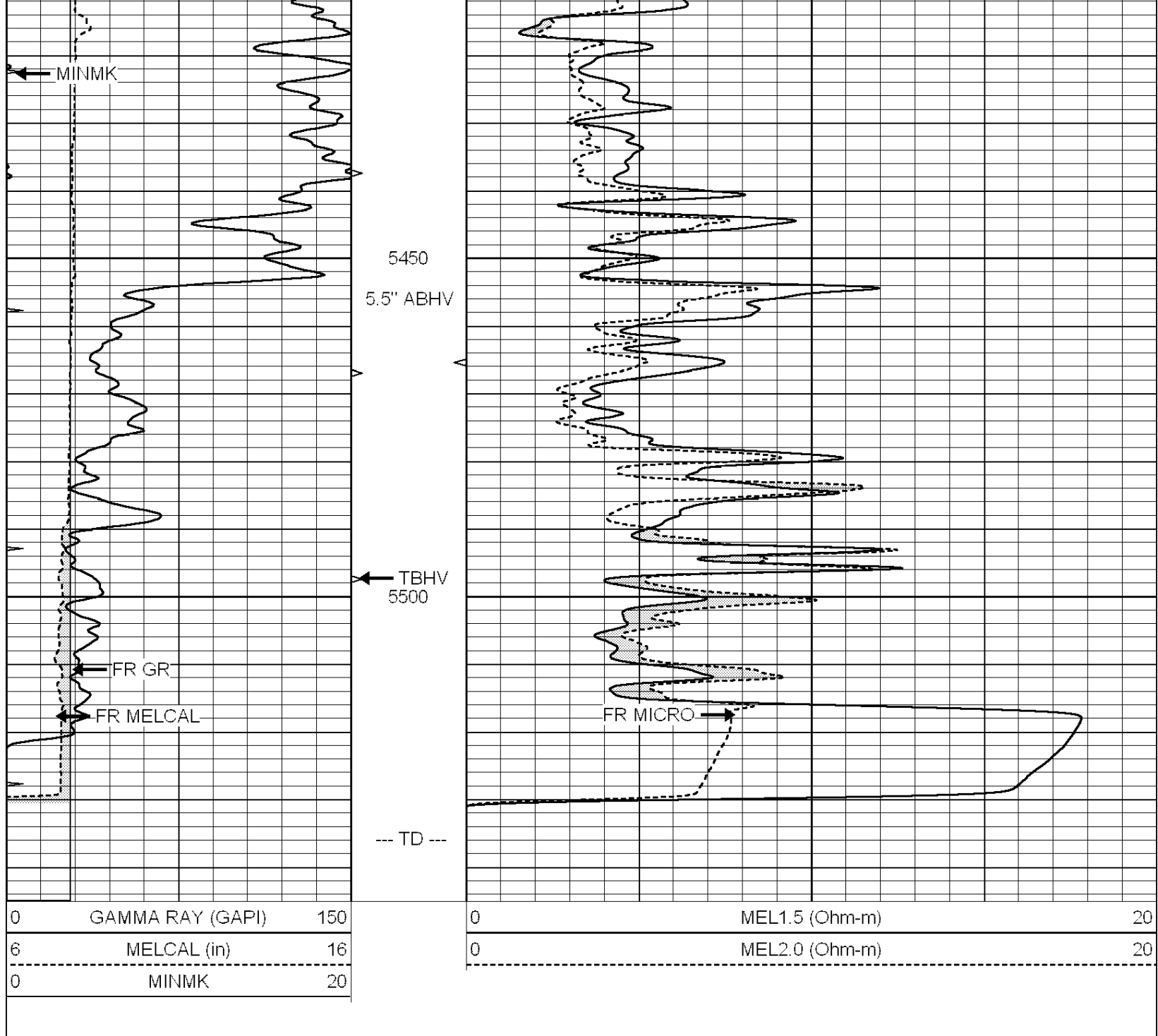










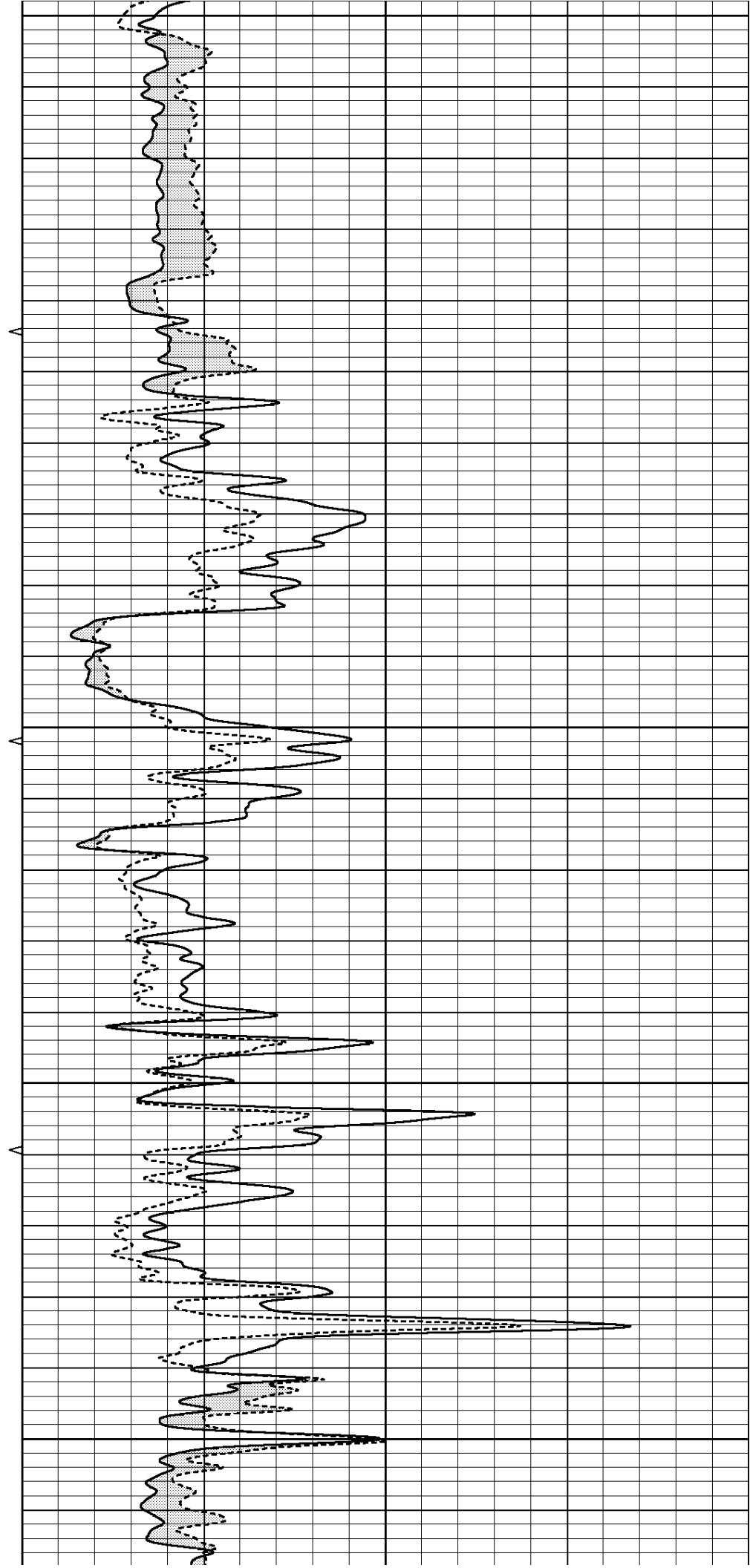
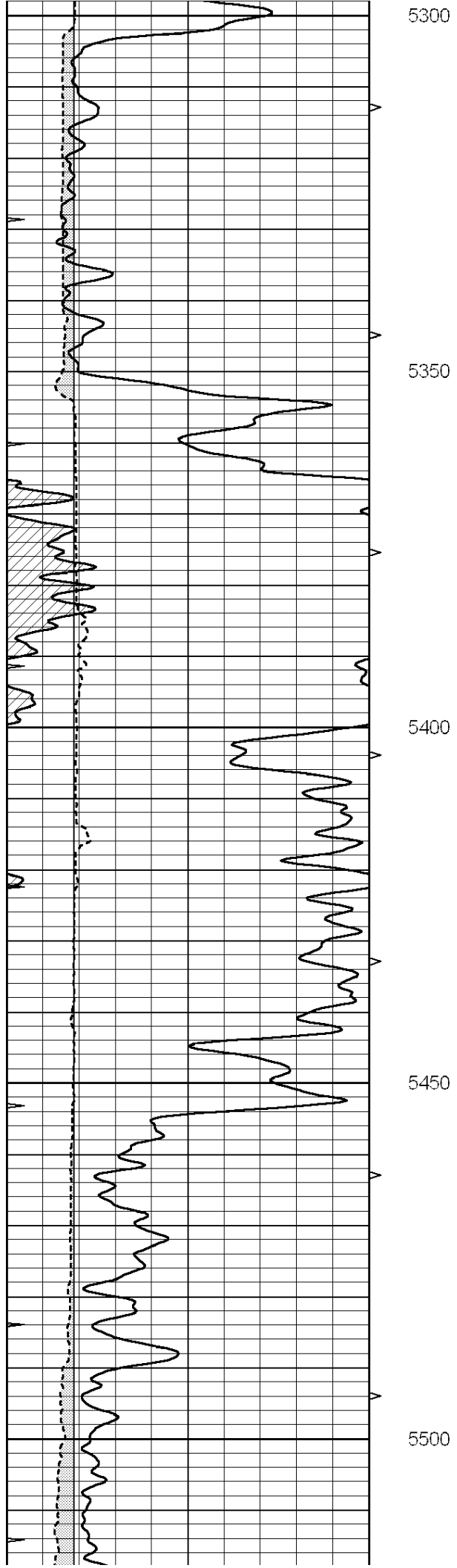


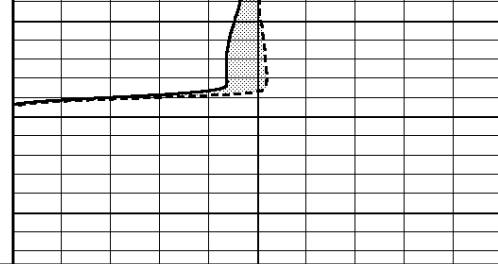
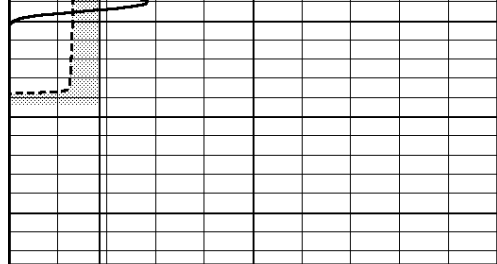
SUPERIOR
Hays,
Kansas

REPEAT SECTION

Database File: 008453pdn.db
 Dataset Pathname: pass4.A
 Presentation Format: micro
 Dataset Creation: Mon Jan 09 18:13:19 2012 by Calc Open-Cased 090629
 Charted by: Depth in Feet scaled 1:240

| | | | | | |
|---|------------------|-----|---|----------------|----|
| 0 | GAMMA RAY (GAPI) | 150 | 0 | MEL1.5 (Ohm-m) | 20 |
| 6 | MELCAL (in) | 16 | 0 | MEL2.0 (Ohm-m) | 20 |
| 0 | MINMK | 20 | | | |





| | | |
|---|------------------|-----|
| 0 | GAMMA RAY (GAPI) | 150 |
| 6 | MELCAL (in) | 16 |
| 0 | MINMK | 20 |

| | | |
|---|----------------|----|
| 0 | MEL1.5 (Ohm-m) | 20 |
| 0 | MEL2.0 (Ohm-m) | 20 |

Calibration Report

Database File: 008453pdn.db
 Dataset Pathname: pass5.1
 Dataset Creation: Mon Jan 09 18:18:37 2012 by Calc Open-Cased 090629

MICRO Calibration Report

| | | |
|----------------------|--------------------------|--------------------|
| Serial Number: | Micro1 | |
| Tool Model: | ProbeL | |
| Performed: | Mon Jan 09 18:09:57 2012 | |
| Caliper Calibration: | Gain=3.259 | Offset=-2.876 |
| References | Low Cal 7.700 | High Cal 13.500 |
| Readings | 3.245 | 5.025 |
| 1.5" Calibration: | Gain=34.000 | Offset=-0.300 |
| References | Low Cal 0.000 | High Cal 20.000 |
| Readings | 0.003 | 0.844 |
| 2" Calibration: | Gain=28.000 | Offset=0.000 |
| References | Low Cal 0.000 | High Cal 20.000 |
| Readings | 0.028 | 0.817 |

Gamma Ray Calibration Report

| | | |
|---------------------|--------------------------|----------|
| Serial Number: | GR5 | |
| Tool Model: | OPEN | |
| Performed: | Mon Jan 09 14:52:08 2012 | |
| Calibrator Value: | 1.0 | GAPI |
| Background Reading: | 0.0 | cps |
| Calibrator Reading: | 1.0 | cps |
| Sensitivity: | 0.6200 | GAPI/cps |