



# Dual Compensated Porosity Log

DIGITAL LOG (785) 625-3858

API No. 15-163-23967-00-00

Company Prospect Oil & Gas Corporation  
 Well McClay No. 13  
 Field Westhusin  
 County Rooks  
 State Kansas

Location SW - NE - SW  
 1650' FSL & 1650' FWL

Sec: 12 Twp: 9 S Rge: 17 W  
 Other Services DIL/MEL

Permanent Datum Ground Level Elevation 2022  
 Log Measured From Kelly Bushing 5 Ft. Above Perm. Datum  
 Drilling Measured From Kelly Bushing

K.B. 2027  
 D.F. G.L. 2022

Date	7/24/2011	
Run Number	One	
Type Log	CNL / CDL	
Depth Driller	3700	
Depth Logger	3700	
Bottom Logged Interval	3679	
Top Logged Interval	2900	
Type Fluid In Hole	Chemical	
Salinity, PPM CL	5,300	
Density	9.2	
Level	Full	
Max. Rec. Temp. F	115	
Operating Rig Time	4 Hours	
Equipment -- Location	17 Hays	
Recorded By	B. Becker	
Witnessed By	Brad Hutchison	

Borehole Record		Casing Record					
Run No	Bit	From	To	Size	Wgt. 23#	From	To
One	12.25	00	218	8.625	23#	00	218
Two	7.875	218					

<<< Fold Here >>>

All interpretations are opinions based on inferences from electrical or other measurements and we cannot and do not guarantee the accuracy or correctness of any interpretation, and we shall not, except in the case of gross or willful negligence on our part, be liable or responsible for any loss, costs, damages, or expenses incurred or sustained by anyone resulting from any interpretation made by any of our officers, agents or employees. These interpretations are also subject to our general terms and conditions set out in our current Price Schedule.

Comments

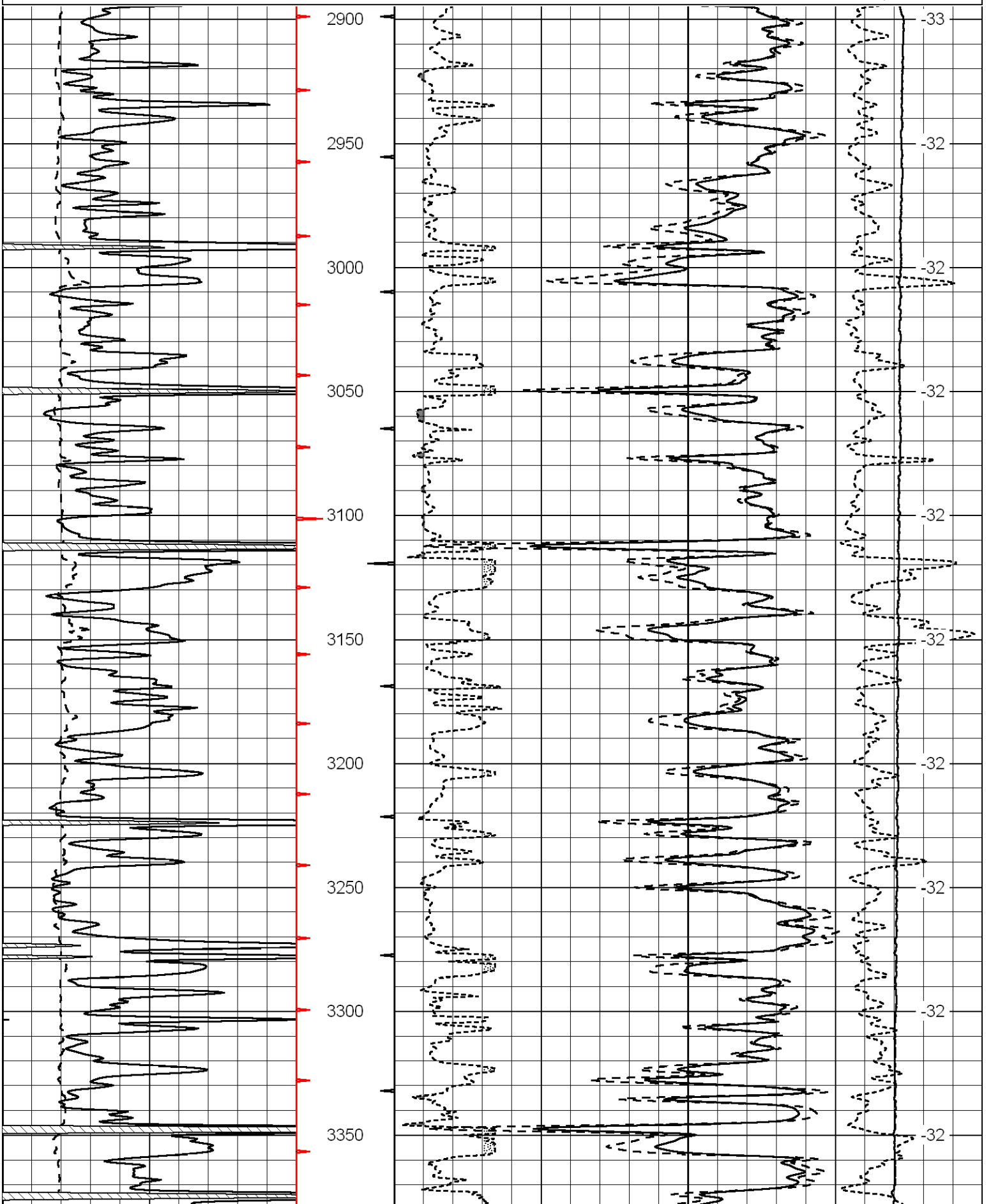
Thank you for using Log-Tech, Inc.  
 (785) 625-3858

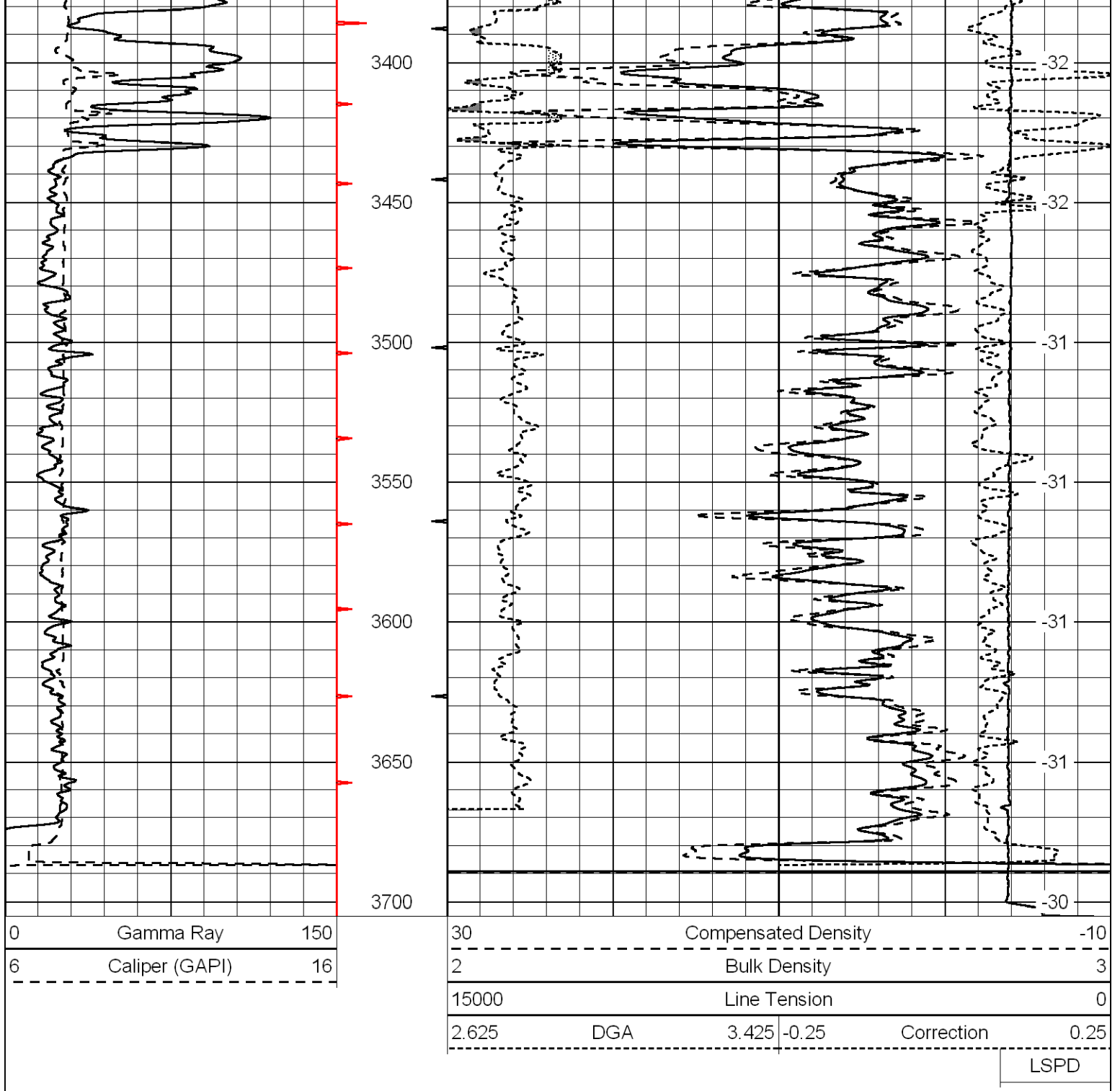
Codel, Ks; 5 North to U Rd;  
 1/2 East; North Into

Database File: prospecthd.db  
 Dataset Pathname: DIL/prosstk  
 Presentation Format: cdl  
 Dataset Creation: Sun Jul 24 12:06:53 2011  
 Charted by: Depth in Feet scaled 1:600

0	Gamma Ray	150
6	Caliper (GAPI)	16

30	Compensated Density		-10
2	Bulk Density		3
15000	Line Tension		0
2.625	DGA	3.425	-0.25
Correction			0.25
LSPD			





Database File: prospecthd.db  
 Dataset Pathname: DIL/prosstk  
 Presentation Format: cndlspec  
 Dataset Creation: Sun Jul 24 12:06:53 2011  
 Charted by: Depth in Feet scaled 1:240

