



Dual Induction Log

DIGITAL LOG (785) 625-3858

15-163-23967-00-00

Company	Prospect Oil & Gas Corporation	
Well	McClay No. 13	
Field	Westhusin	
County	Rooks	State Kansas
Location	SW - NE - SW 1650' FSL & 1650' FWL	
Sec: 12	Twp: 9 S	Rge: 17 W
Permanent Datum	Ground Level	Elevation 2022
Log Measured From	Kelly Bushing	5 Ft. Above Perm. Datum
Drilling Measured From	Kelly Bushing	K.B. 2027
		D.F. 2022
		G.L. 2022

Date	7/24/2011
Run Number	One
Depth Driller	3700
Depth Logger	3700
Bottom Logged Interval	3699
Top Log Interval	200
Casing Driller	8.625 @ 218
Casing Logger	219
Bit Size	7.875
Type Fluid in Hole	Chemical
Salinity, ppm CL	5.300
Density / Viscosity	9.2 51
pH / Fluid Loss	9.0 10.4
Source of Sample	Flowline
Rm @ Meas. Temp	0.34 @ 75
Rmf @ Meas. Temp	0.26 @ 75
Rmc @ Meas. Temp	0.46 @ 75
Source of Rmf / Rmc	Charts
Rm @ BHT	0.22 @ 115
Operating Rig Time	4 Hours
Max Rec. Temp. F	115
Equipment Number	17
Location	Havs
Recorded By	B. Becker
Witnessed By	Brad Hutchison

<<< Fold Here >>>

All interpretations are opinions based on inferences from electrical or other measurements and we cannot and do not guarantee the accuracy or correctness of any interpretation, and we shall not, except in the case of gross or willful negligence on our part, be liable or responsible for any loss, costs, damages, or expenses incurred or sustained by anyone resulting from any interpretation made by any of our officers, agents or employees. These interpretations are also subject to our general terms and conditions set out in our current Price Schedule.

Comments

Thank you for using Log-Tech, Inc.
 (785) 625-3858

Codel, Ks; 5 North to U Rd;
 1/2 East; North Into

Database File: prospecthd.db
 Dataset Pathname: DIL/prosstk
 Presentation Format: dil2in
 Dataset Creation: Sun Jul 24 12:06:53 2011
 Charted by: Depth in Feet scaled 1:600

0 Gamma Ray 150
-200 SP 0

0 Shallow Resistivity 50
0 Deep Resistivity 50

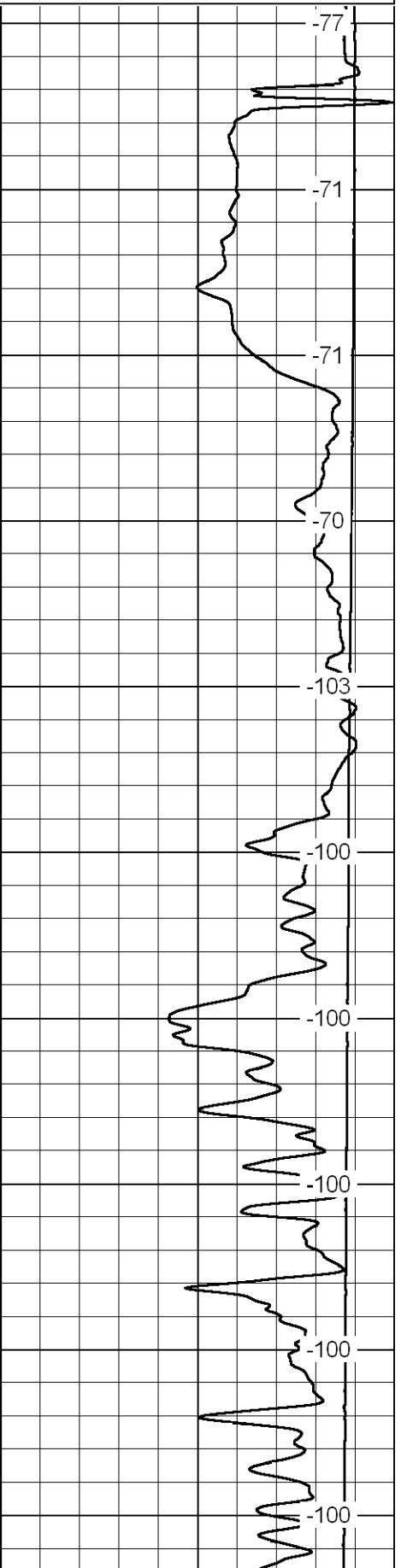
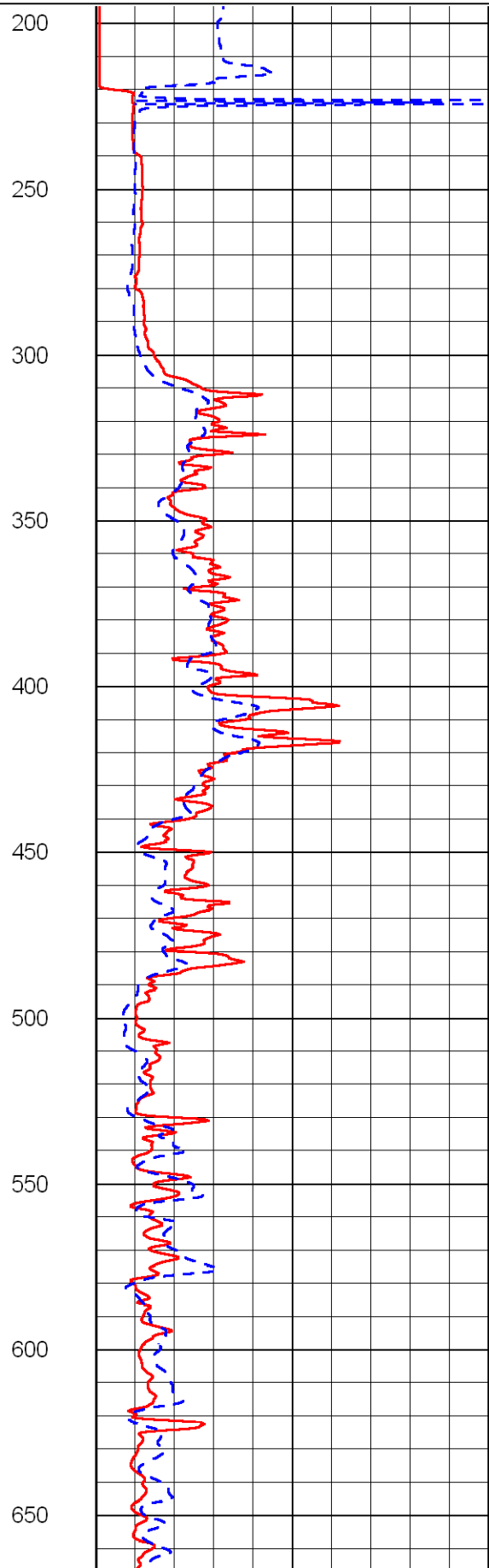
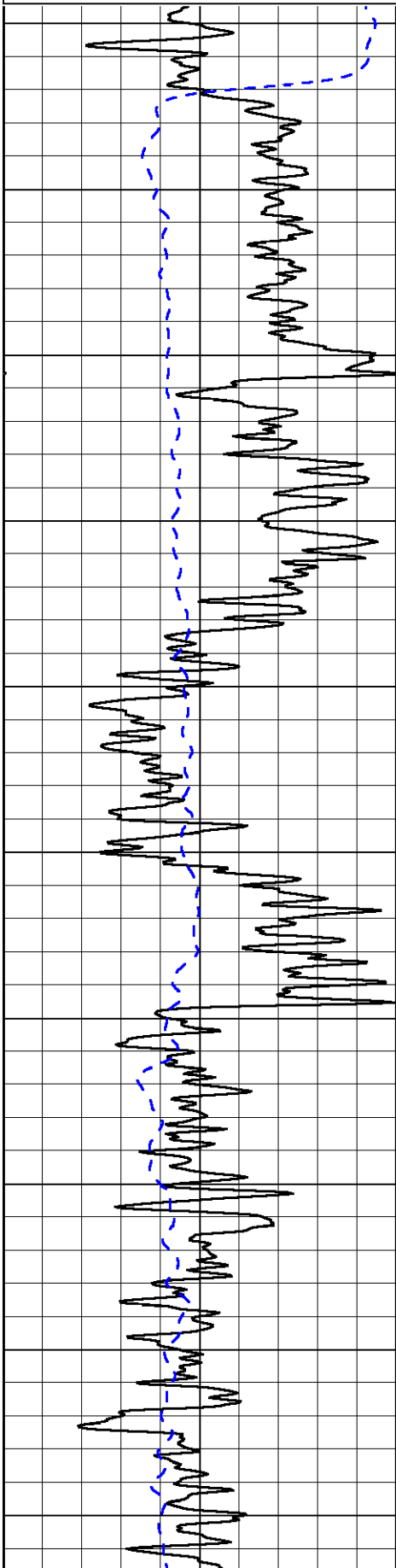
LSPD

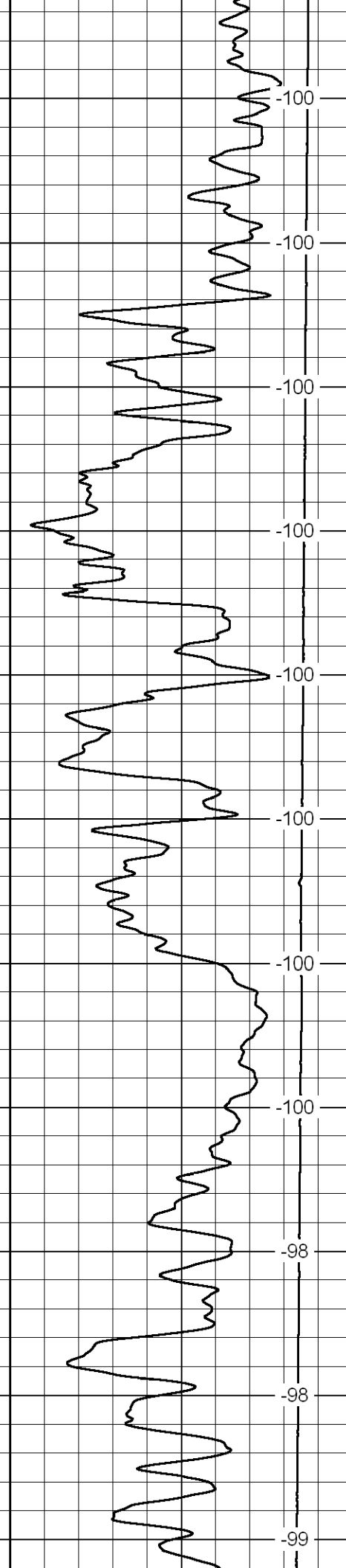
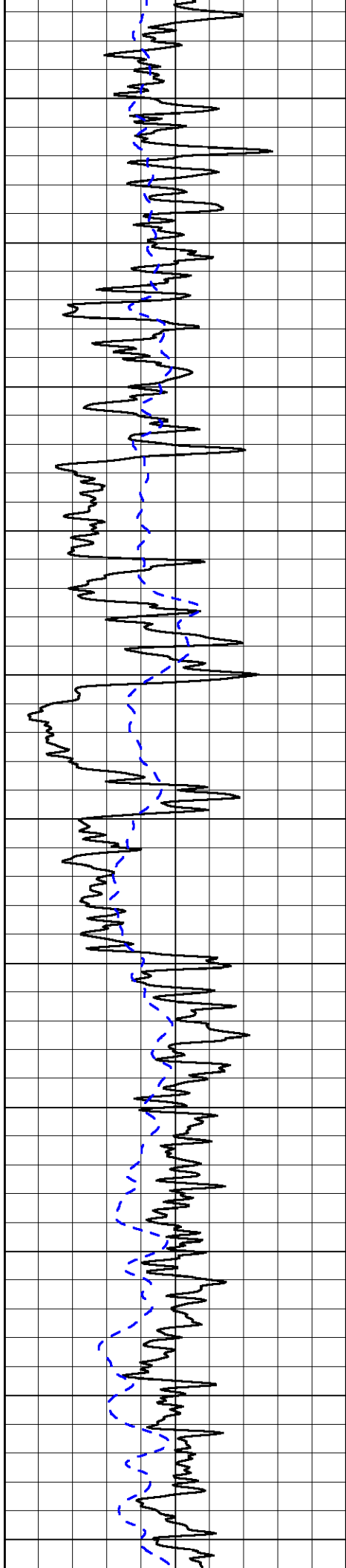
1000 Conductivity 0

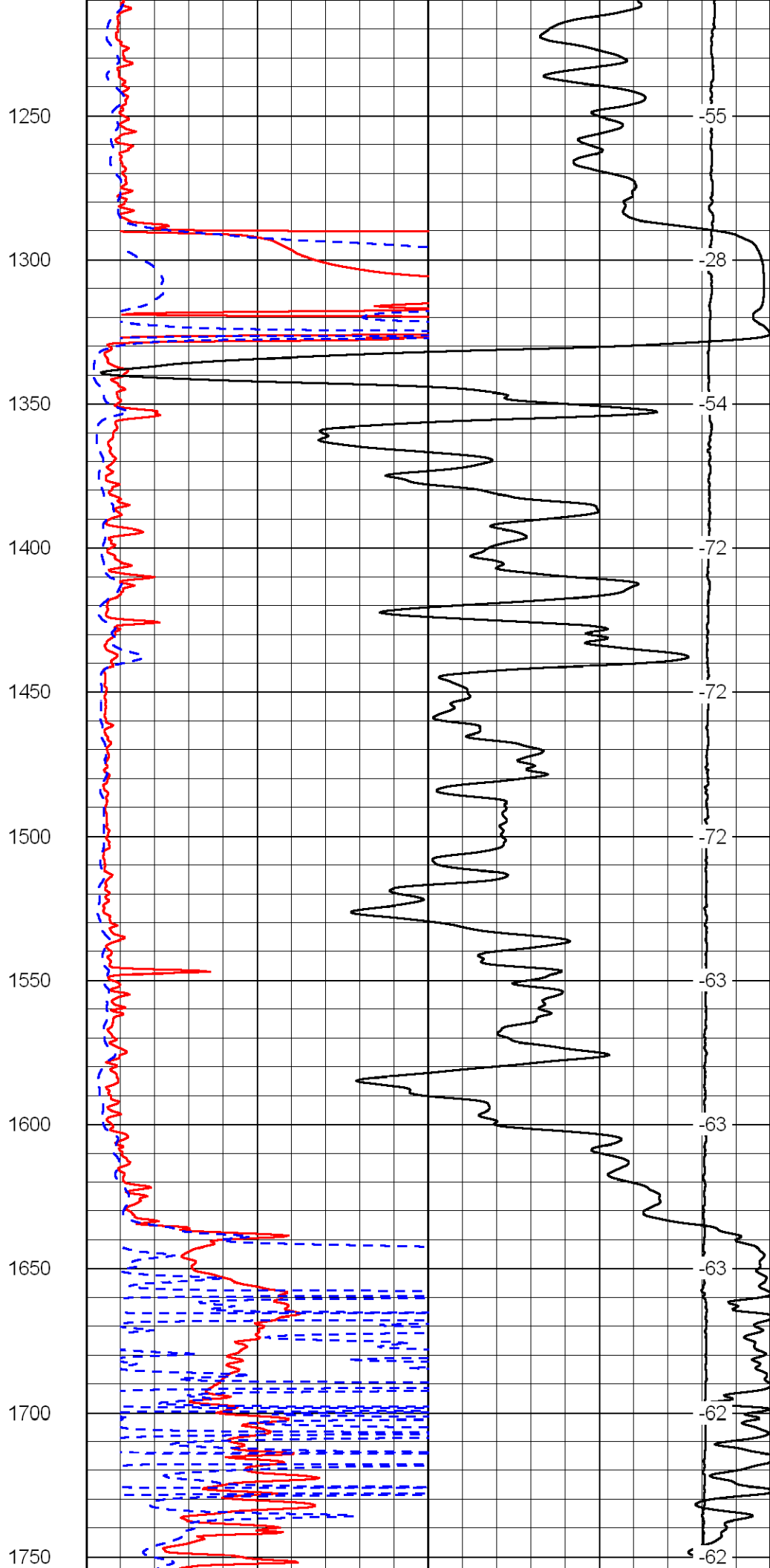
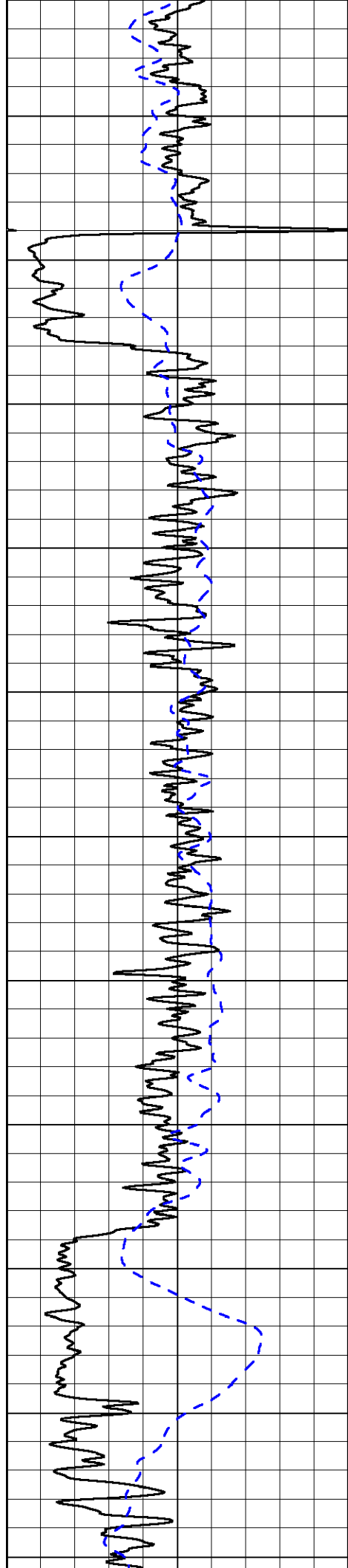
15000 Line Tension 0

50 Shallow Resistivity 500

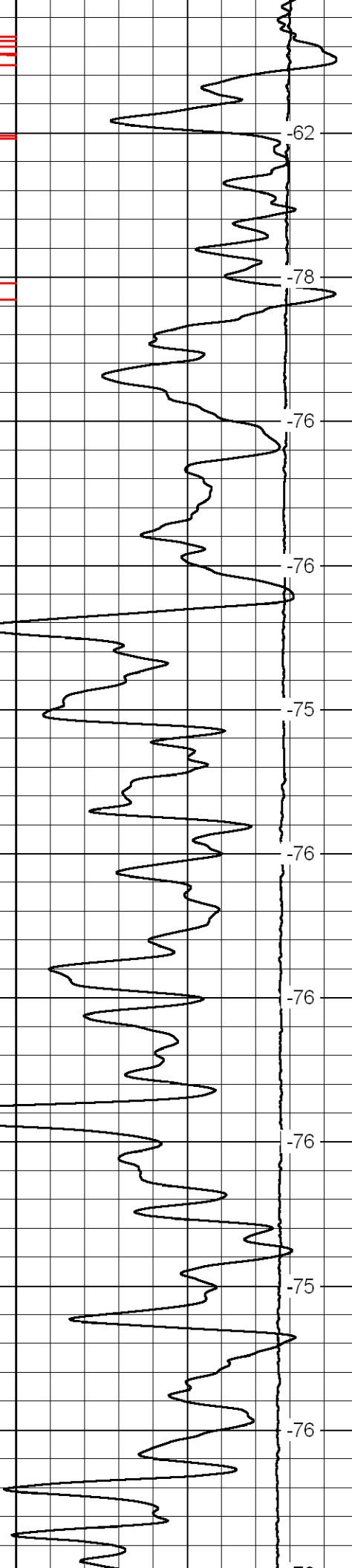
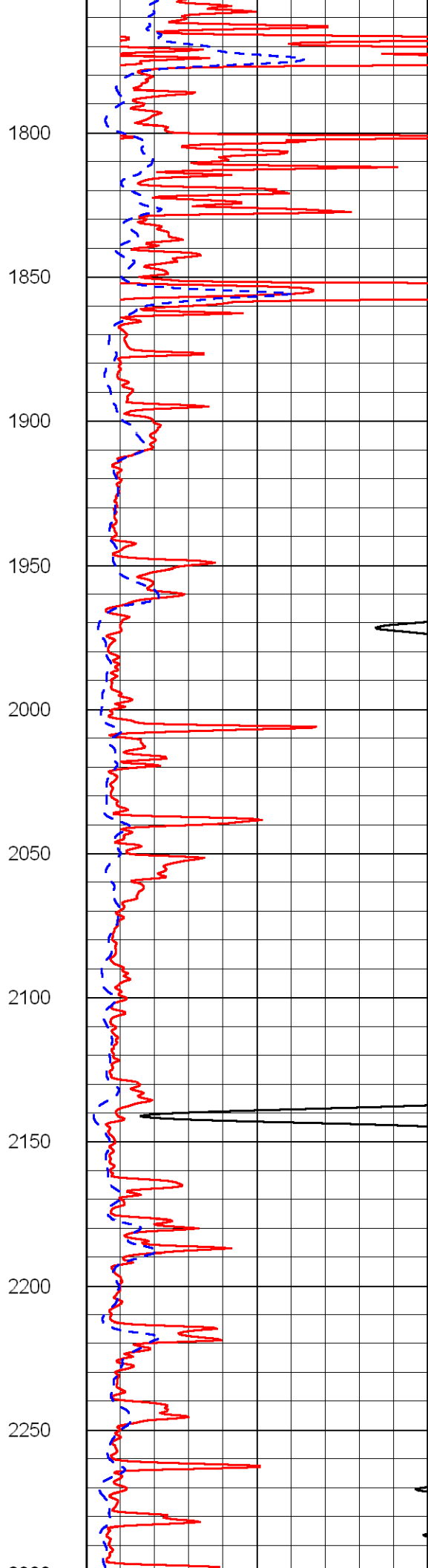
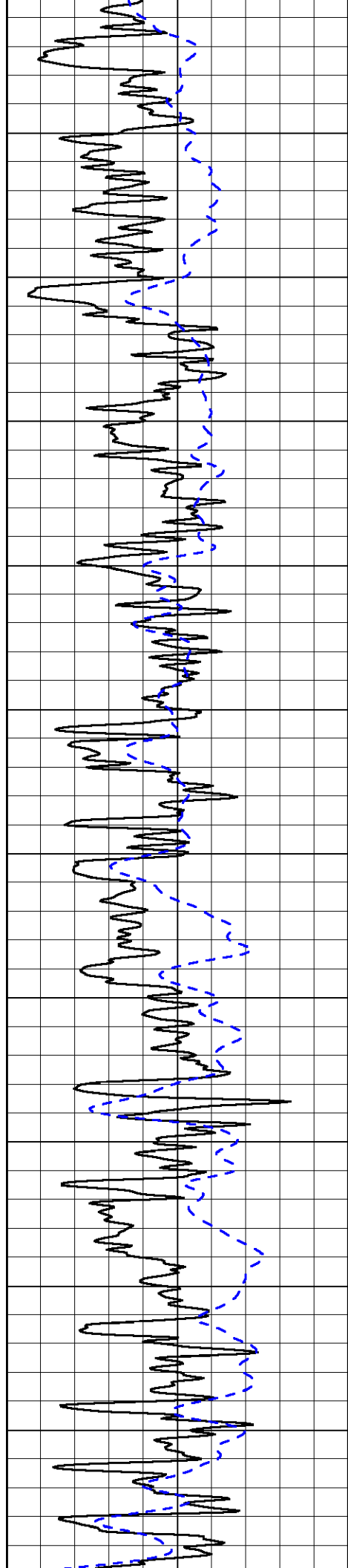
50 Deep Resistivity 500

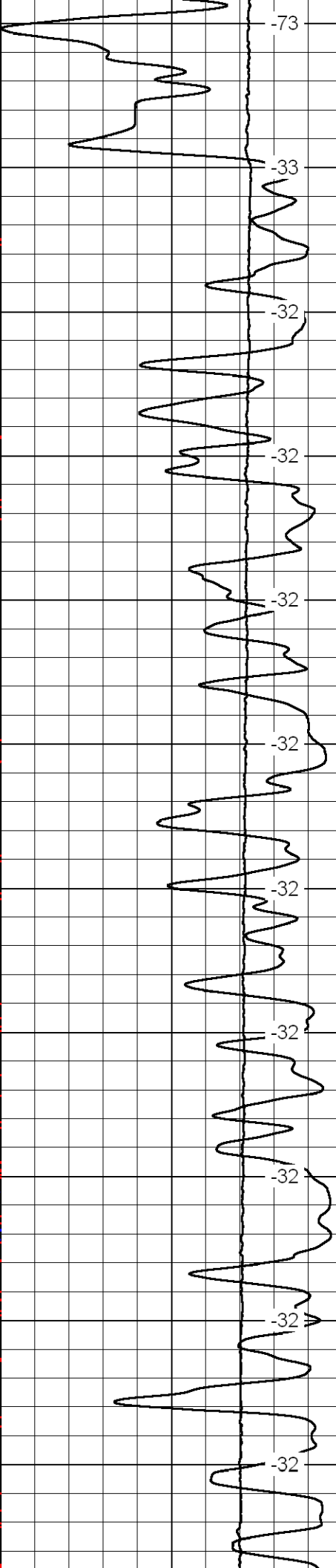
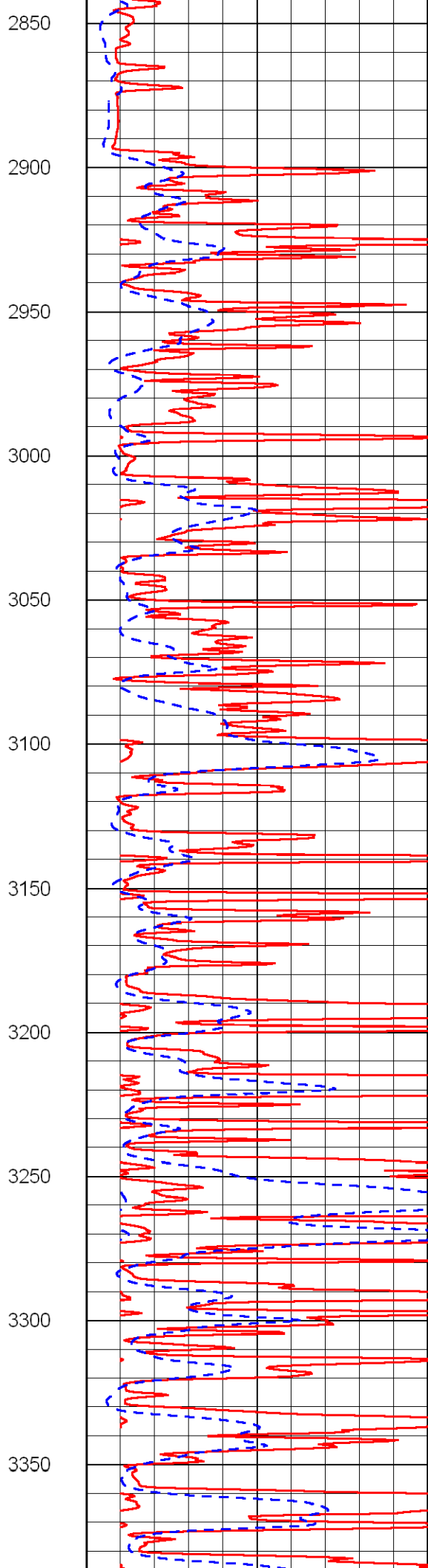
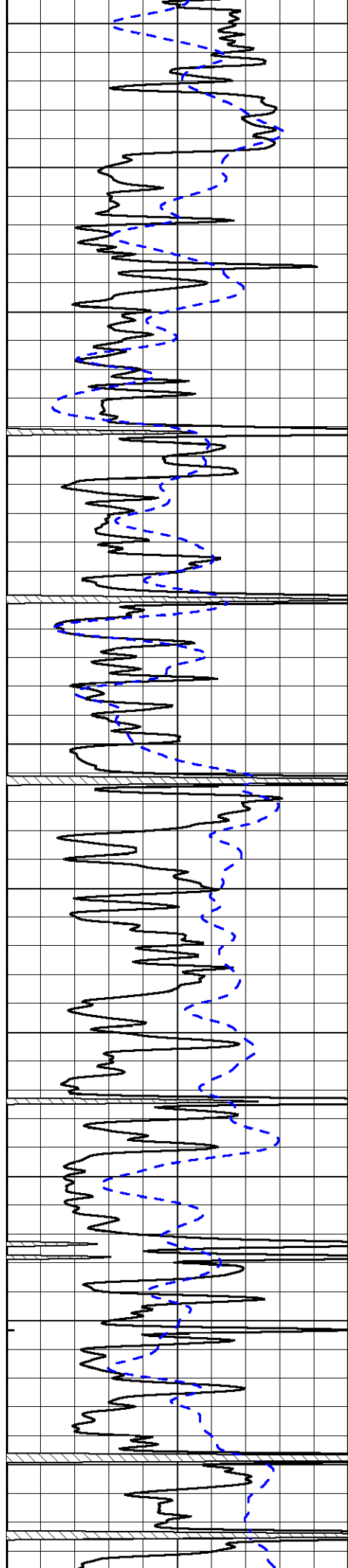


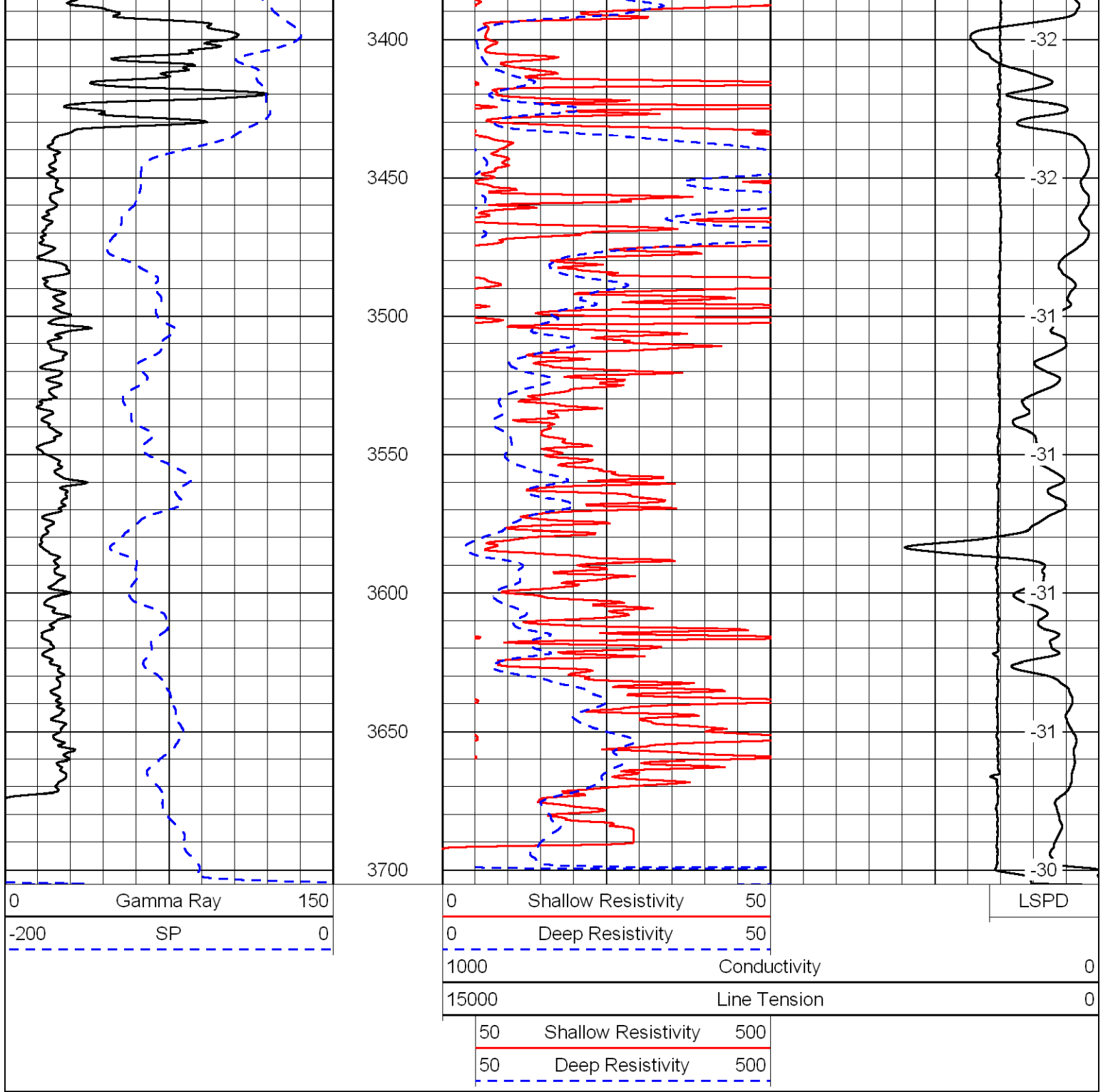




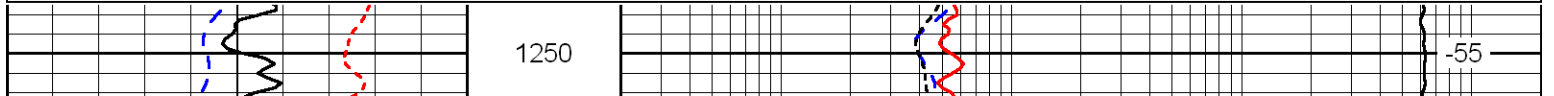
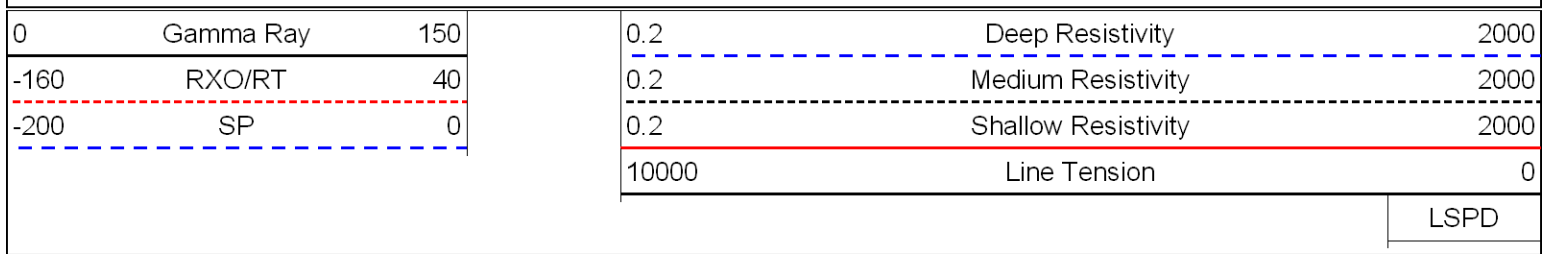
55
28
54
72
72
72
63
63
63
62
62

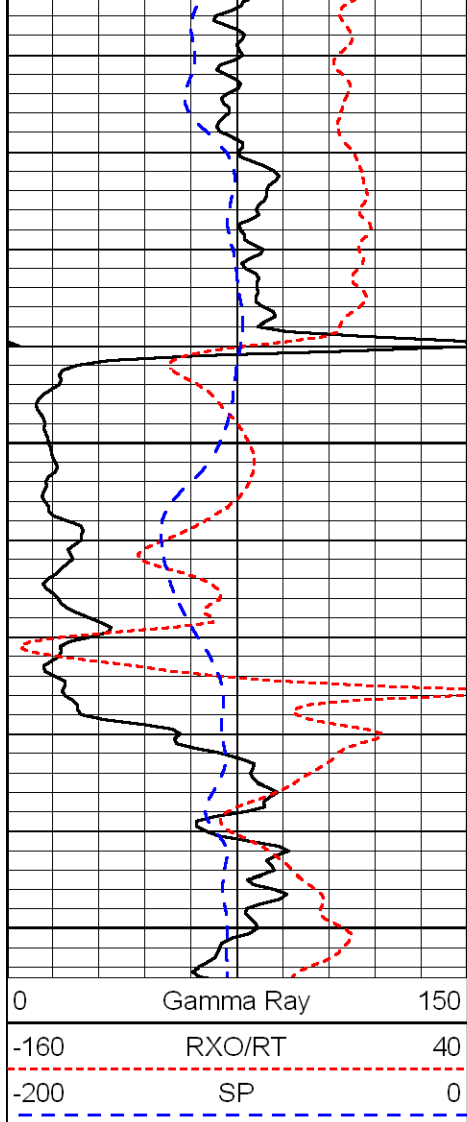






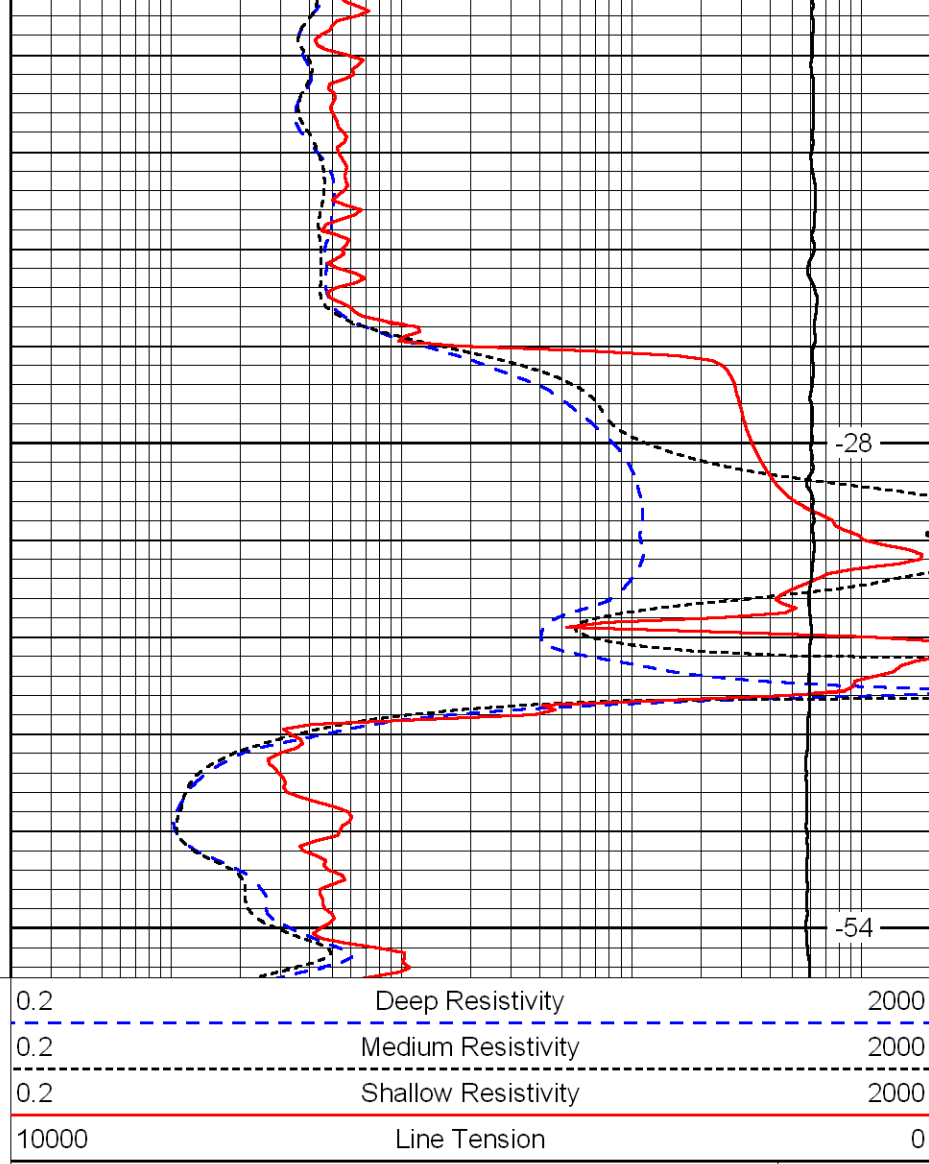
Database File: prospecthd.db
 Dataset Pathname: DIL/prosstk
 Presentation Format: dil
 Dataset Creation: Sun Jul 24 12:06:53 2011
 Charted by: Depth in Feet scaled 1:240





1300

1350

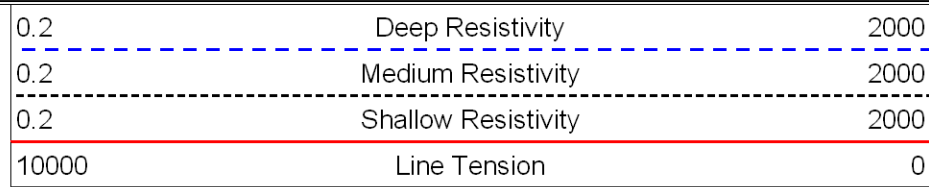
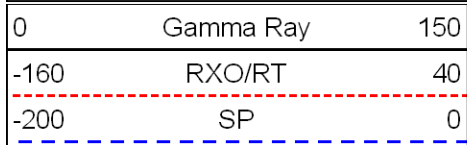


-28

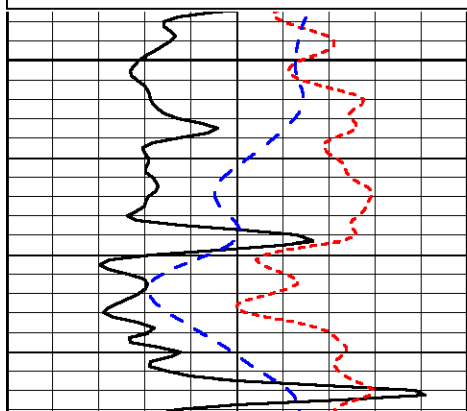
-54

LSPD

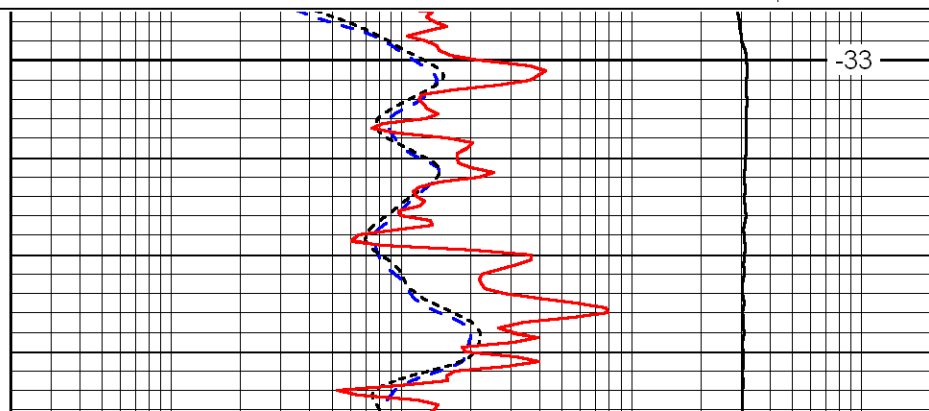
Database File: prospecthd.db
 Dataset Pathname: DIL/prosstk
 Presentation Format: dil
 Dataset Creation: Sun Jul 24 12:06:53 2011
 Charted by: Depth in Feet scaled 1:240



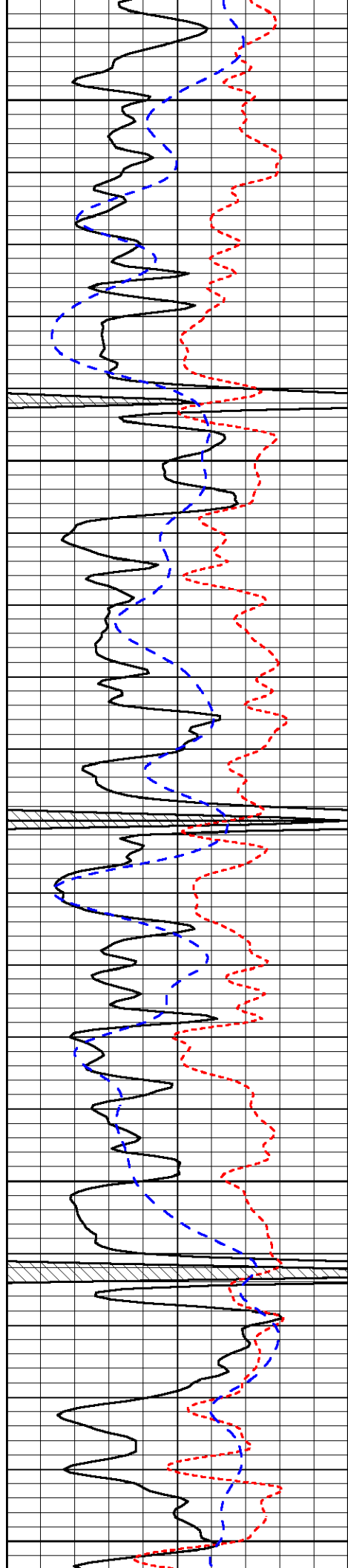
LSPD



2900



-33



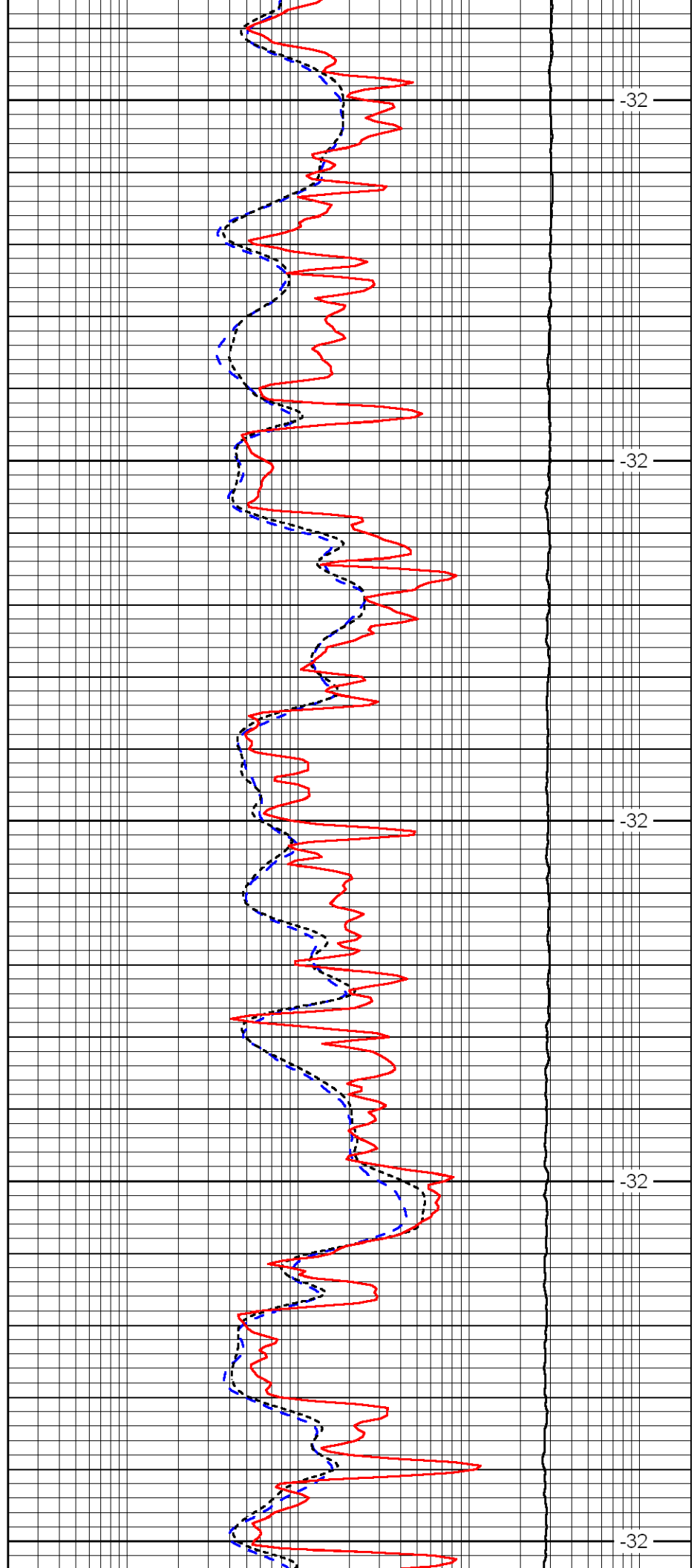
2950

3000

3050

3100

3150



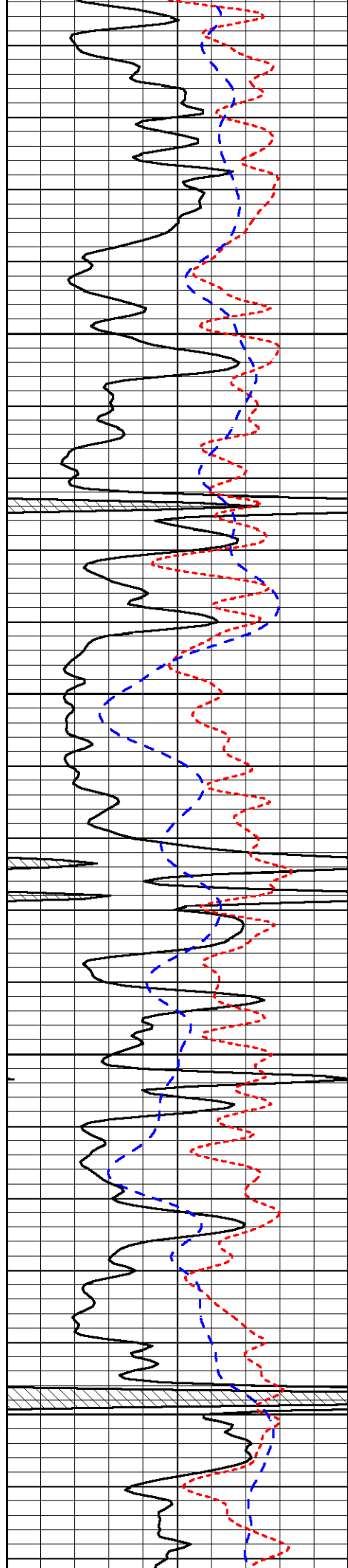
-32

-32

-32

-32

-32

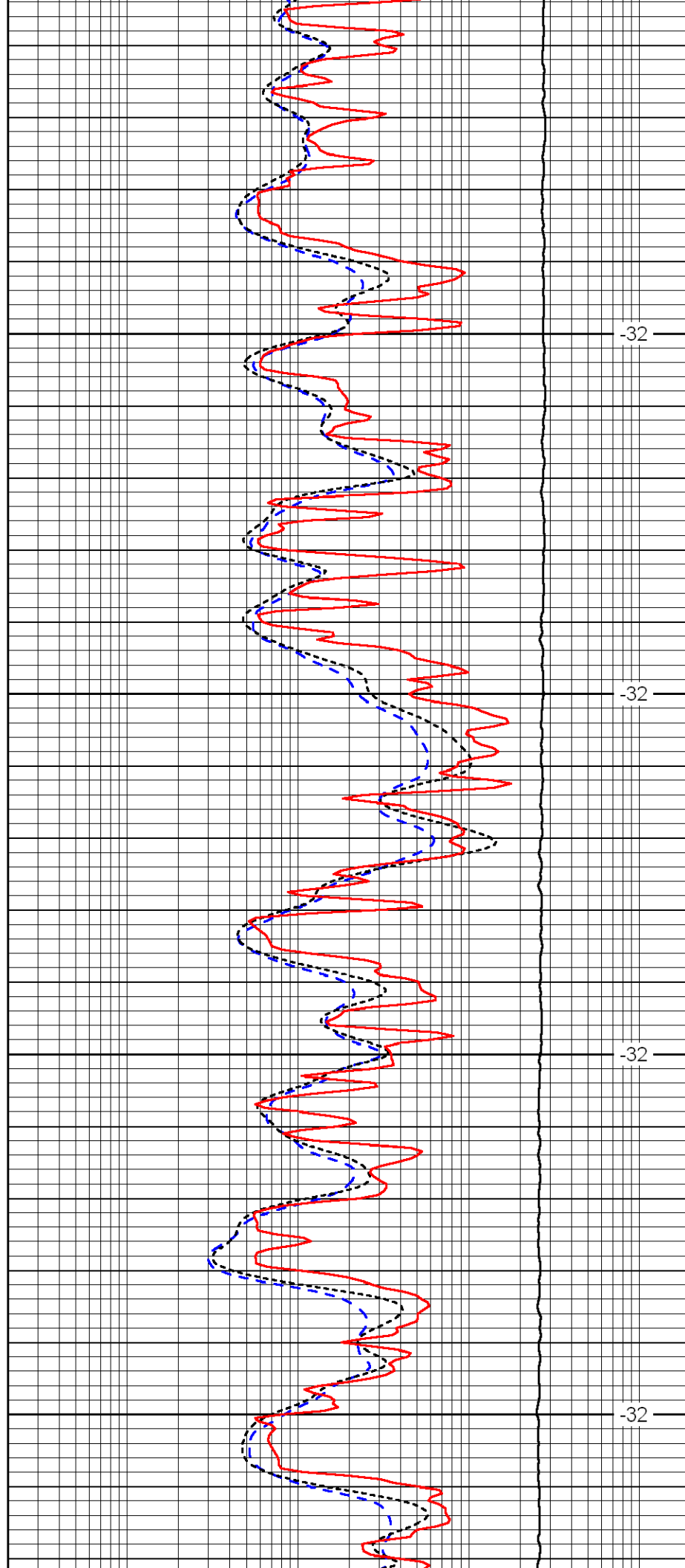


3200

3250

3300

3350

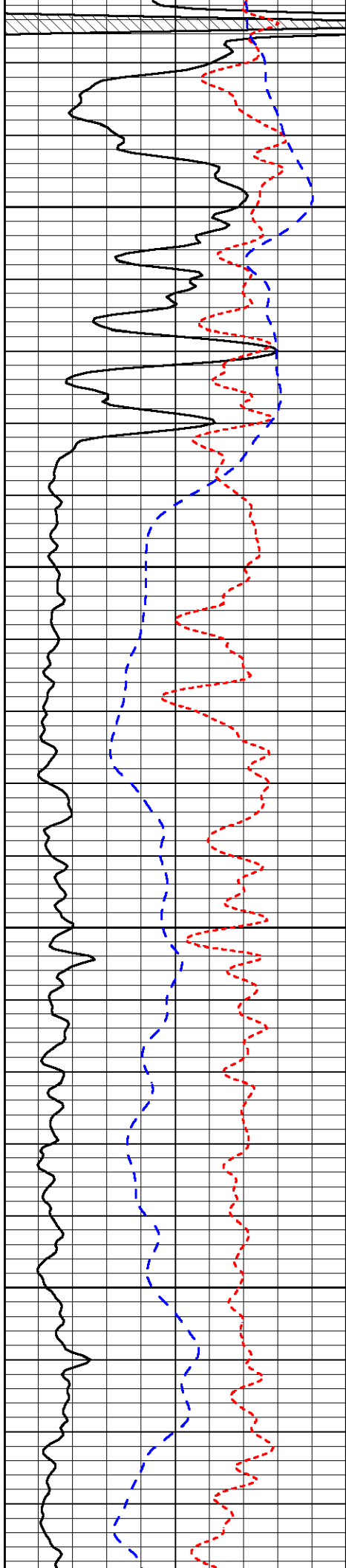


-32

-32

-32

-32

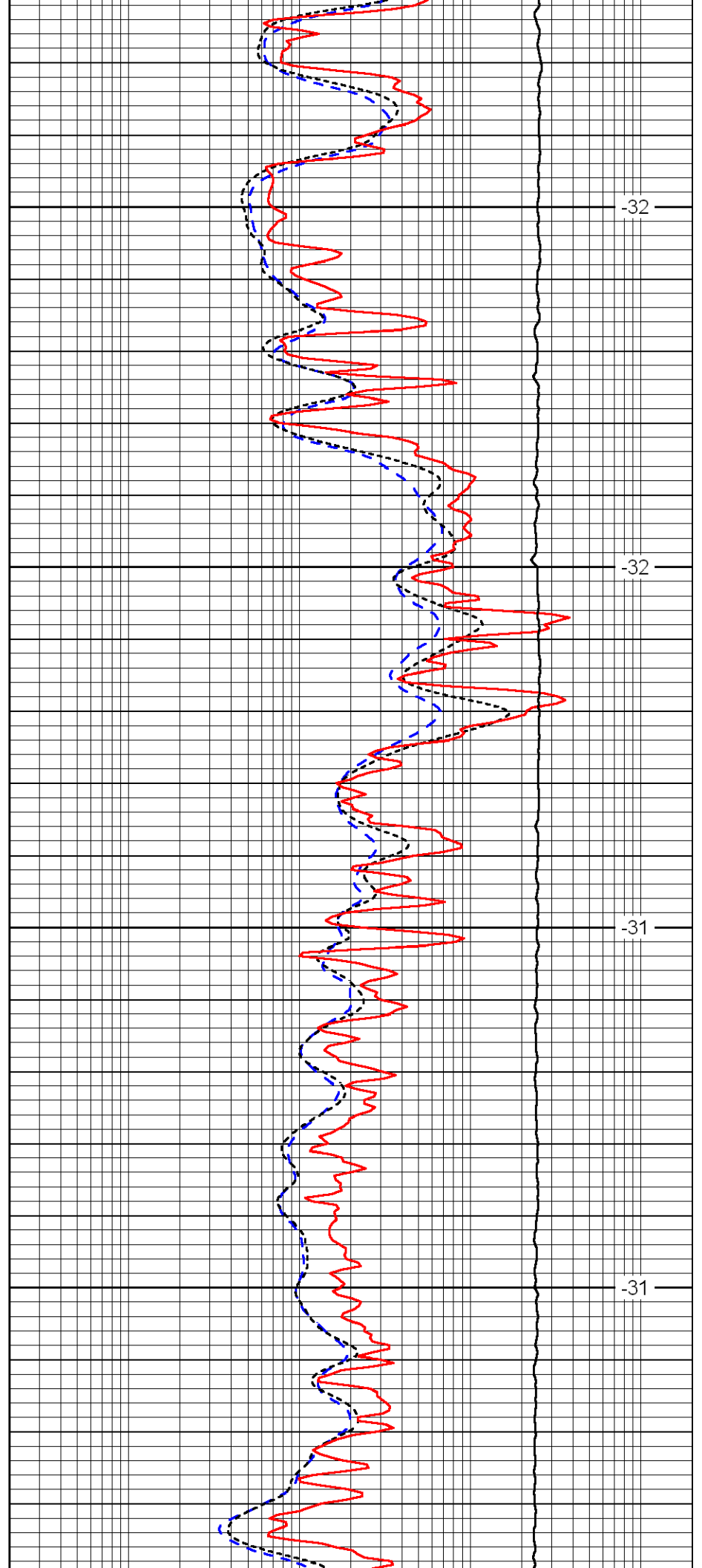


3400

3450

3500

3550

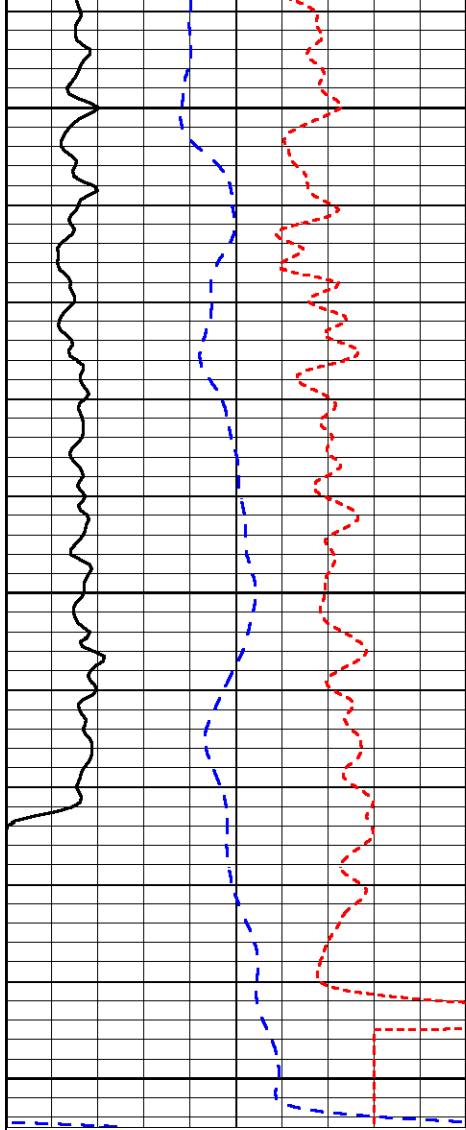


-32

-32

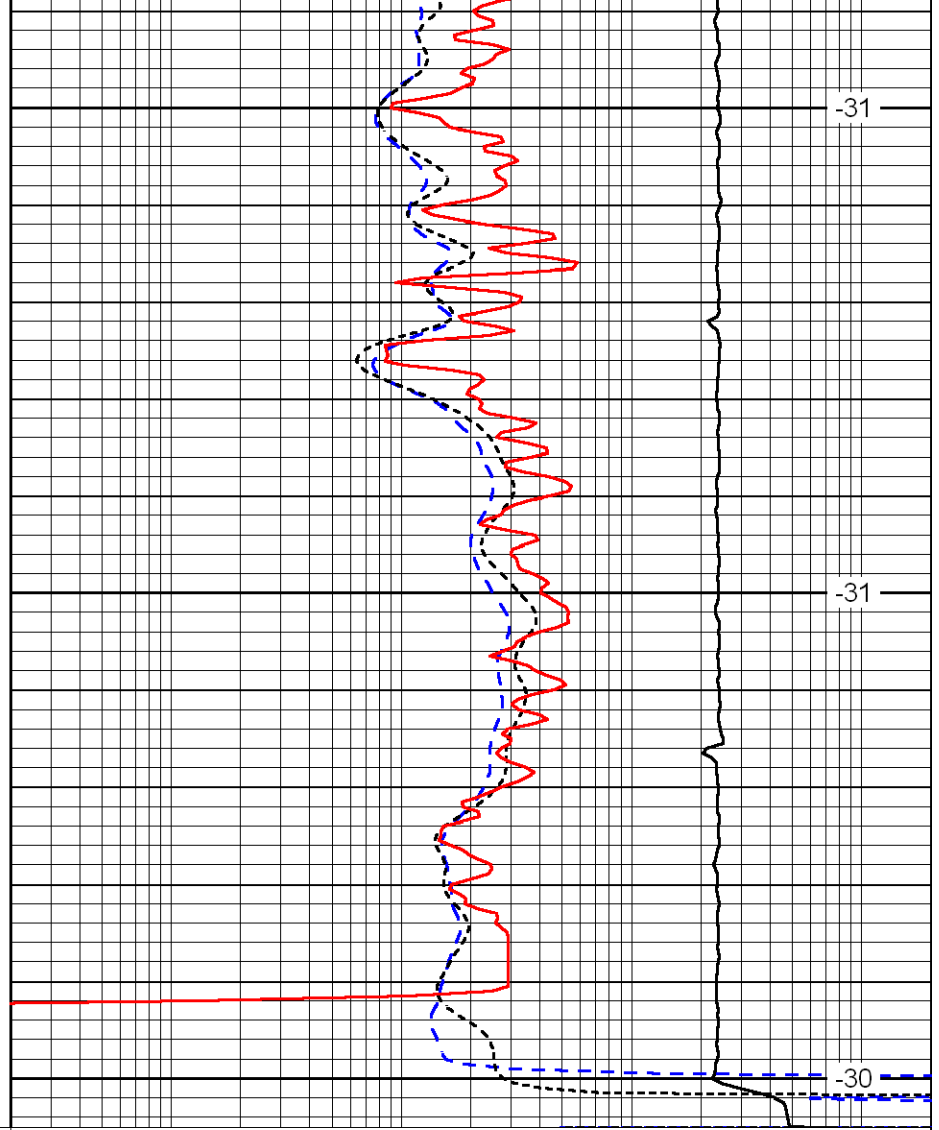
-31

-31



0	Gamma Ray	150
-160	RXO/RT	40
-200	SP	0

3600
3650
3700



0.2	Deep Resistivity	2000
0.2	Medium Resistivity	2000
0.2	Shallow Resistivity	2000
10000	Line Tension	0

-31
-31
-30

LSPD