



Microresistivity Log

DIGITAL LOG (785) 625-3858

API No.	15-163-23967-00-00		
Company	Prospect Oil & Gas Corporation		
Well	McClay No. 13		
Field	Westhusin		
County	Rooks	State	Kansas
Location	SW - NE - SW 1650' FSL & 1650' FWL		
Sec: 12	Twp: 9 S	Rge: 17 W	
Permanent Datum	Ground Level	Elevation 2022	Other Services CNL/CDL DIL
Log Measured From	Kelly Bushing	5 Ft. Above Perm. Datum	
Drilling Measured From	Frotkelly Bushing		K.B. 2027 D.F. G.L. 2022

Date	7/24/2011	
Run Number	Two	
Depth Driller	3700	
Depth Logger	3700	
Bottom Logged Interval	3699	
Top Log Interval	2900	
Casing Driller	8.625 @ 218	
Casing Logger	219	
Bit Size	7.875	
Type Fluid in Hole	Chemical	
Salinity, ppm CL	5.300	
Density / Viscosity	9.2	51
pH / Fluid Loss	9.0	10.4
Source of Sample	Flowline	
Rm @ Meas. Temp	0.34 @	75
Rmf @ Meas. Temp	0.26 @	75
Rmc @ Meas. Temp	0.46 @	75
Source of Rmf / Rmc	Charts	
Rm @ BHT	0.22 @	115
Operating Rig Time	4 Hours	
Max Rec. Temp. F	115	
Equipment Number	17	
Location	Havs	
Recorded By	B. Becker	
Witnessed By	Brad Hutchison	

<<< Fold Here >>>

All interpretations are opinions based on inferences from electrical or other measurements and we cannot and do not guarantee the accuracy or correctness of any interpretation, and we shall not, except in the case of gross or willful negligence on our part, be liable or responsible for any loss, costs, damages, or expenses incurred or sustained by anyone resulting from any interpretation made by any of our officers, agents or employees. These interpretations are also subject to our general terms and conditions set out in our current Price Schedule.

Comments

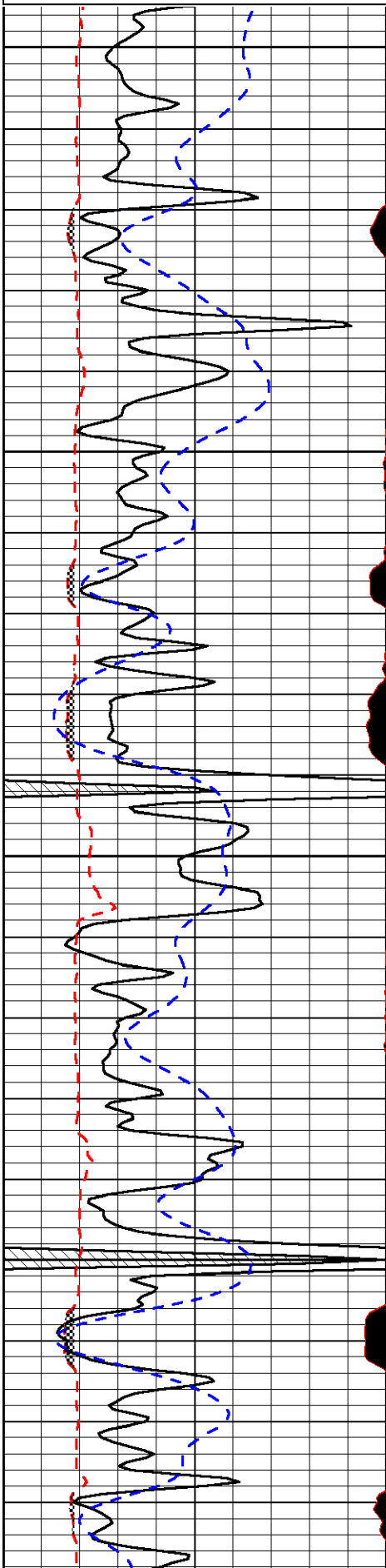
Thank you for using Log-Tech, Inc.
(785) 625-3858

Codel, Ks; 5 North to U Rd;
1/2 East; North Into

Database File: prospecthd.db
 Dataset Pathname: DIL/prosstk
 Presentation Format: micro
 Dataset Creation: Sun Jul 24 12:06:53 2011
 Charted by: Depth in Feet scaled 1:240

0	Gamma Ray	150
6	MCAL (GAPI)	16
2.875	Mud Cake (GAPI)	7.875
-200	SP	0

0	Micro Inverse 1 X 1	40
0	Micro Normal 2"	40
10000	Line Weight	0
		LSPD

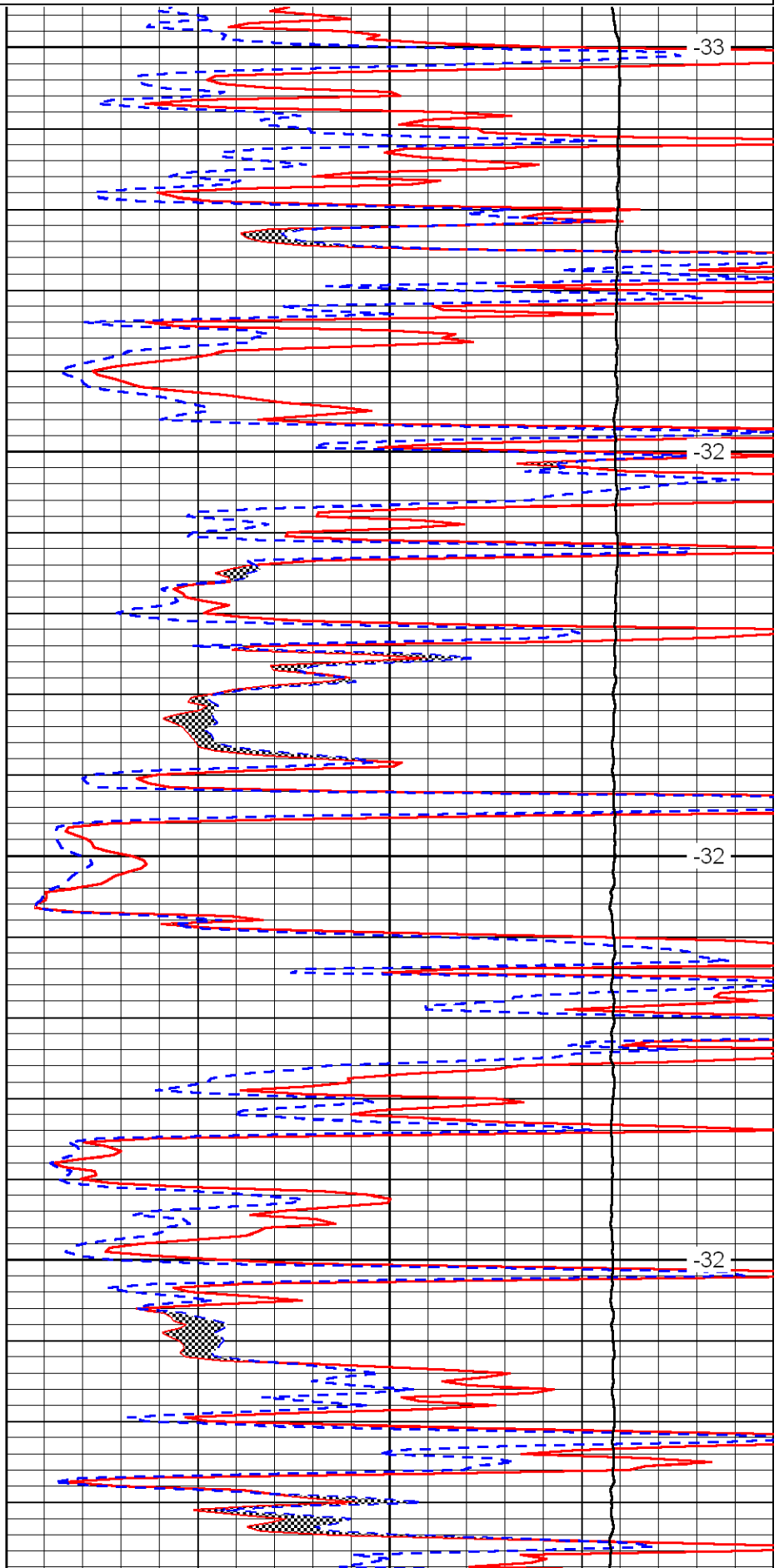


2900

2950

3000

3050

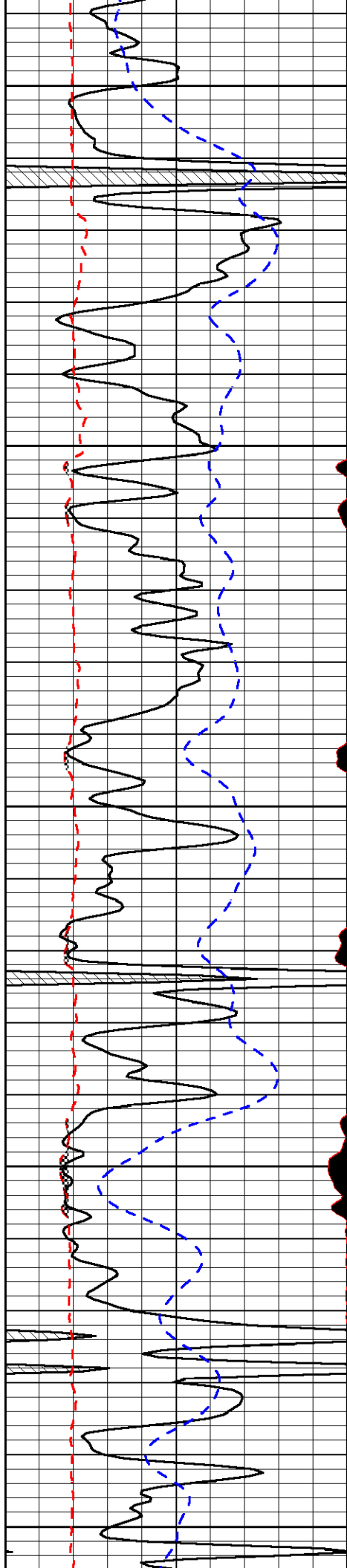


-33

-32

-32

-32



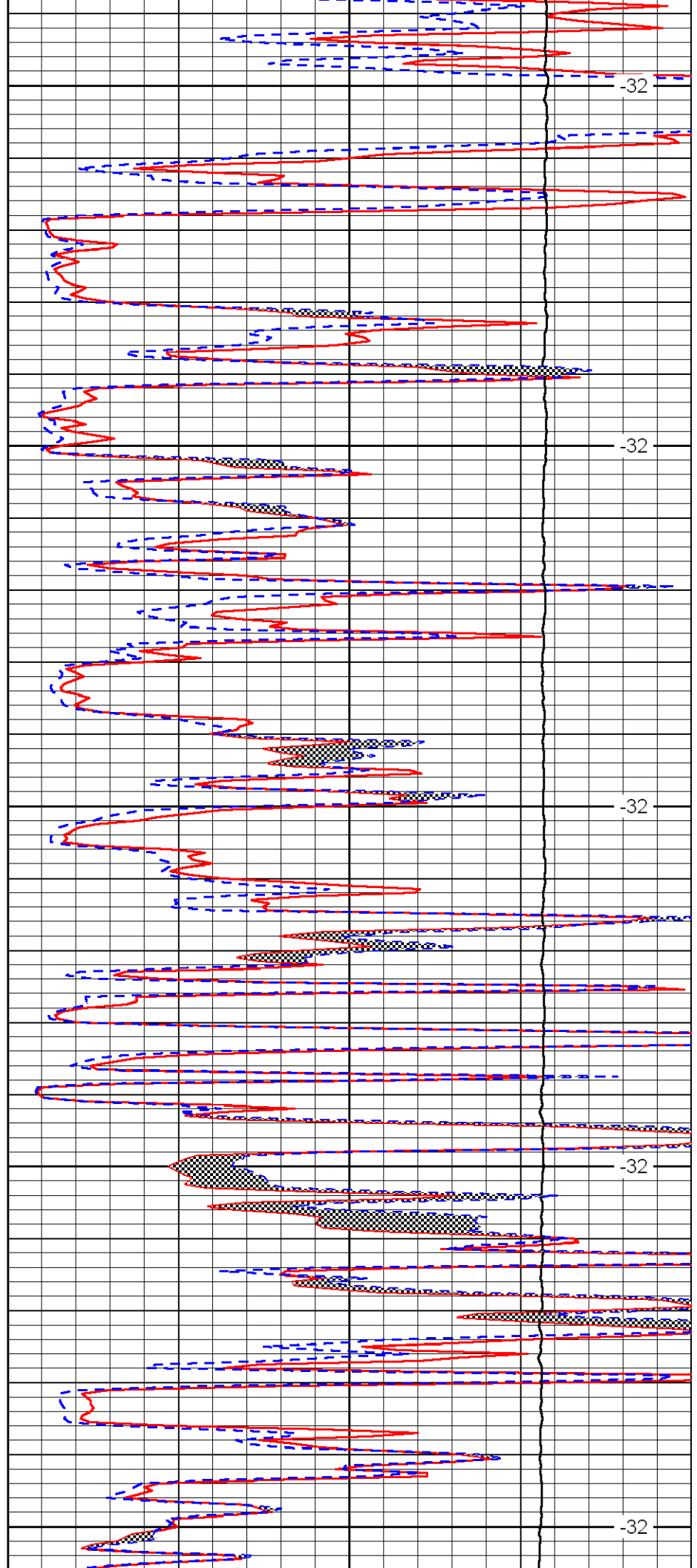
3100

3150

3200

3250

3300



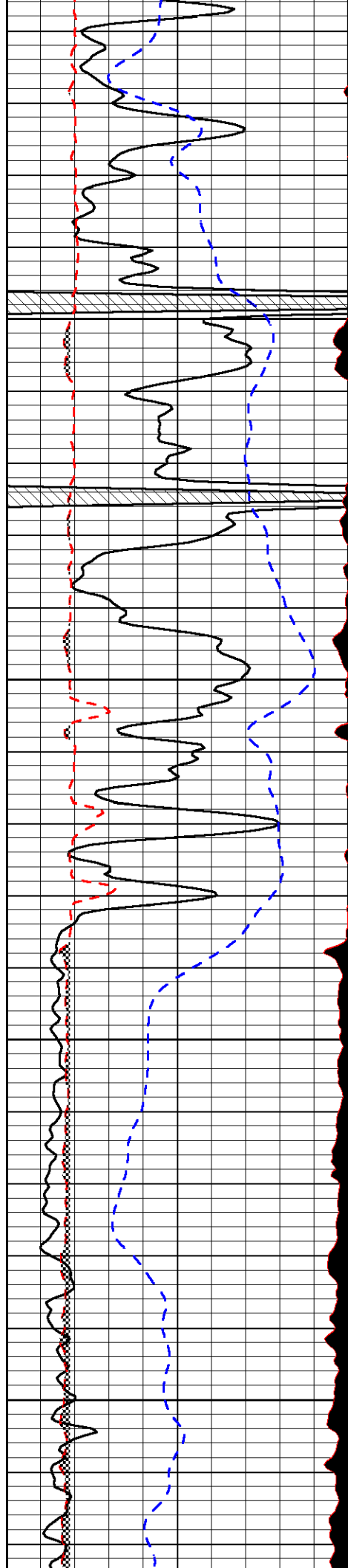
-32

-32

-32

-32

-32

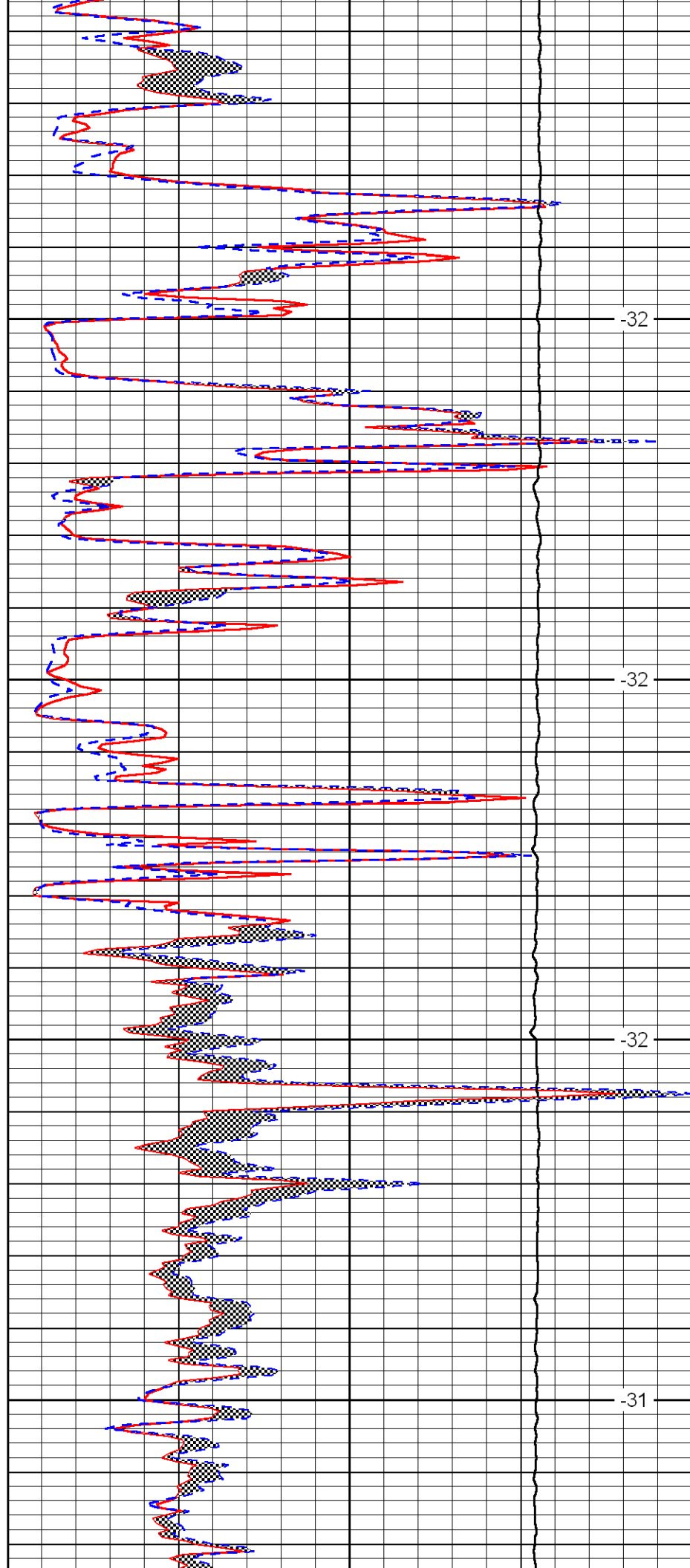


3350

3400

3450

3500

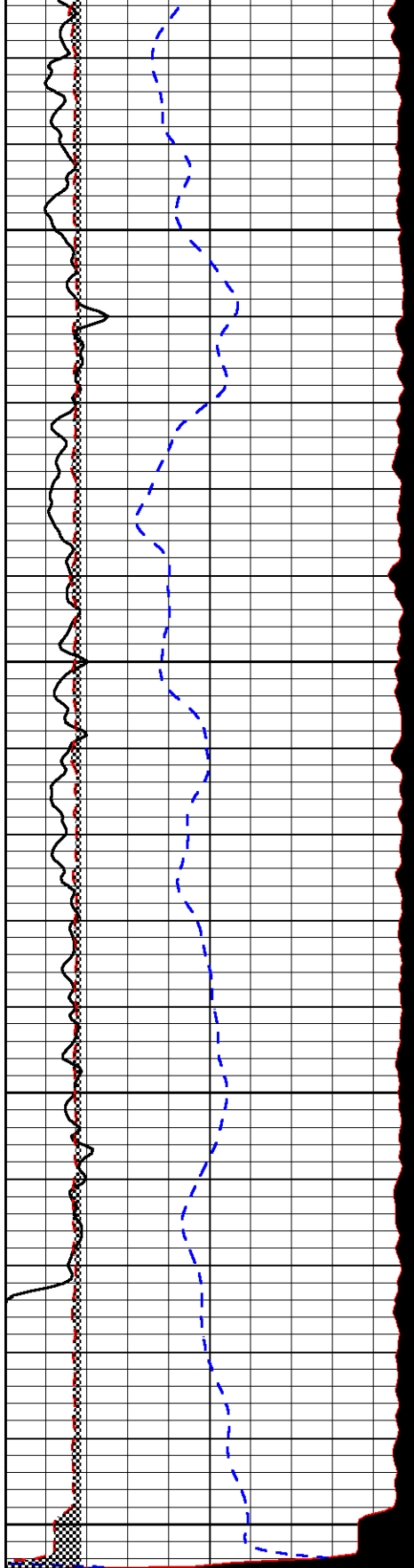


-32

-32

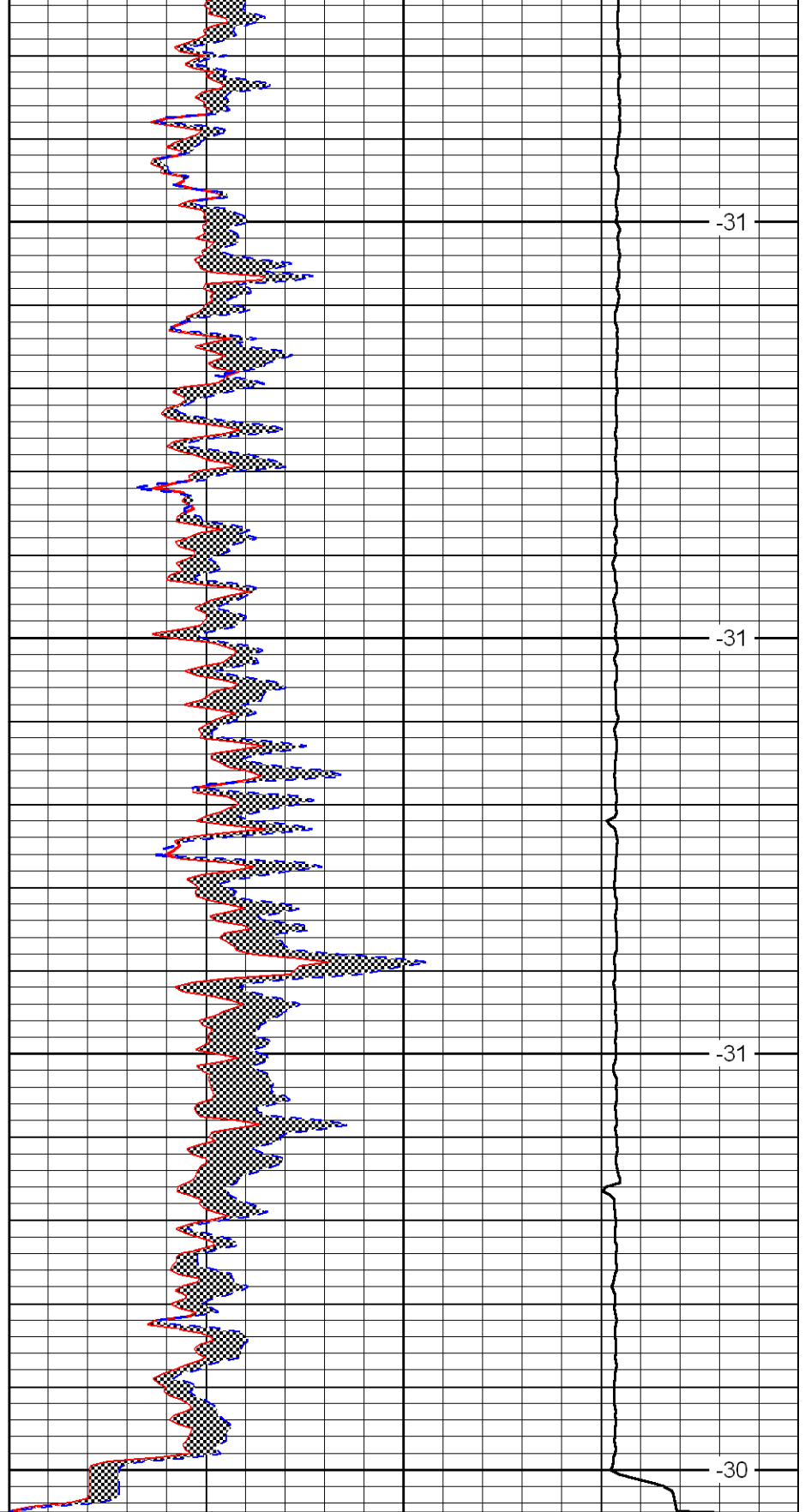
-32

-31



0	Gamma Ray	150
6	MCAL (GAPI)	16
2.875	Mud Cake (GAPI)	7.875
-200	SP	0

3550
3600
3650
3700



0	Micro Inverse 1 X 1	40
0	Micro Normal 2''	40
10000	Line Weight	0

LSPD