



MIDWEST SURVEYS
 LOGGING - PERFORATING - CONSULTING SERVICES
 P.O. Box 68, Osawatomie, KS 66064
 913 / 755 - 2128

GAMMA RAY / NEUTRON / CCL

File No.

Company **Altavista Energy, Inc.**

Well **Baldwin West No. A-3**

Field **Baldwin Field**

County **Douglas** State **Kansas**

Location **1815 FSL & 575' FEL
NW-SE-NE-SE**

Other Services
Perforate

Sec. 2 Twp. 15s Rge. 20e
 Permanent Datum GL Elevation NA
 Log Measured From GL
 Drilling Measured From GL

Date 10-05-2012

Run Number One

Depth Driller 940.0

Depth Logger 859.5

Bottom Logged Interval 858.5

Top Log Interval 200.0

Fluid Level Full

Type Fluid Water
 Density / Viscosity NA
 Salinity - PPM Cl NA
 Max Recorded Temp NA
 Estimated Cement Top 0.0
 Equipment No. Location 104 Osawatimie
 Recorded By Gary Windsch
 Witnessed By Doug Evans

BORE-HOLE RECORD

RUN No.	BIT FROM	TO	SIZE	WGT	FROM	TO
One	9.875"	0.0	42.0	7.00"	19#	0.0
Two	5.625"	42.0	940.0	2.875"	6.5#	0.0
				Barite	Set	At

CASING RECORD

SIZE	WGT	FROM	TO
7.00"	19#	0.0	42.0
2.875"	6.5#	0.0	894.85
Barite	Set	At	893.95

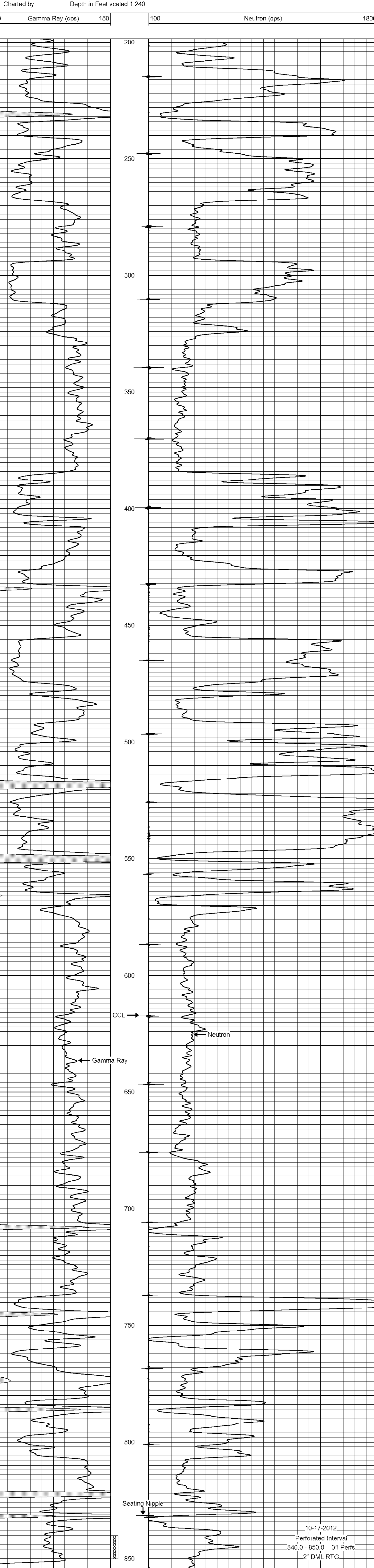
<<< Fold Here >>>

All interpretations are opinions based on inferences from electrical or other measurements and we cannot and do not guarantee the accuracy or correctness of any interpretation, and we shall not, except in the case of gross or willful negligence on our part, be liable or responsible for any loss, costs, damages, or expenses incurred or sustained by anyone resulting from any interpretation made by any of our officers, agents or employees. These interpretations are also subject to our general terms and conditions set out in our current Price Schedule.

Comments

Drilling Contractor :
Town Oilfield Services, Inc.

Database File: baldwin3aw.db
 Dataset Pathname: pass1
 Presentation Format: gr-n-ccl
 Dataset Creation: Fri Oct 05 13:49:52 2012 by Log SCH 111116
 Charted by: Depth in Feet scaled 1:240



10-17-2012
 Perforated Interval
 840.0 - 850.0 31 Perfs
 2" DML RTG