



MIDWEST SURVEYS
 LOGGING - PERFORATING - CONSULTING SERVICES
 P.O. Box 68, Osawatomie, KS 66064
 913.755.2128

GAMMA RAY / NEUTRON / CCL

File No.

Company: **Altavista Energy, Inc.**

Well: **Baldwin West No. AI-2**

Field: **Baldwin Field**

County: **Douglas** State: **Kansas**

Location: **2145' FSL & 575' FEL
 SW-NE-NE-SE**

Other Services
Perforate

Sec 2 Twp. 15s Rge. 20e
 Permanent Datum: GL Elevation: NA
 Log Measured From: GL
 Drilling Measured From: GL

Elevation
 KB: NA
 D.F.: NA
 GL: NA

API # 15-045-21,828

Date

10-15-2012

Run Number

One

Depth Driller

920.0

Depth Logger

894.5

Bottom Logged Interval

853.5

Top Log Interval

200.0

Fluid Level

Full

Type Fluid: **Water**
 Density / Viscosity: **NA**
 Salinity - PPM Cl: **NA**
 Max Recorded Temp: **NA**
 Estimated Cement Top: **0.0**
 Equipment No: **104** Location: **Osawatomie**
 Recorded By: **Gary Winielich**
 Witnessed By: **Doug Evans**

BORE-HOLE RECORD			
RUN	BIT	FROM	TO
One	9.875"	0.0	44.0
Two	5.625"	44.0	920.0

CASING RECORD			
NO.	SIZE	WGT.	FROM
One	7.00"	19#	0.0
Two	2.875"	6.5#	0.0
		Set	At

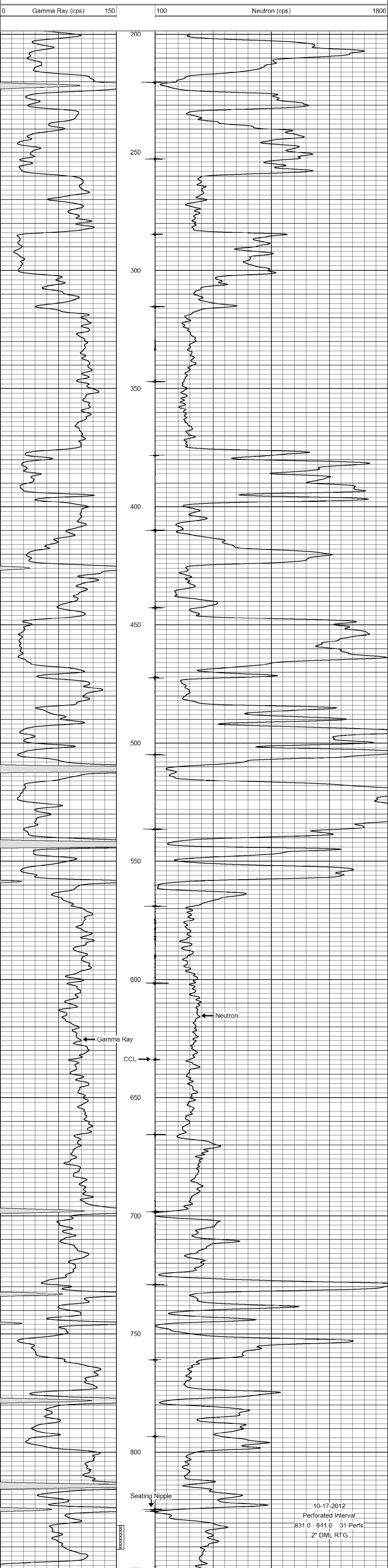
<<< Fold Here >>>

All interpretations are opinions based on inferences from electrical or other measurements and we cannot and do not guarantee the accuracy or correctness of any interpretation, and we shall not, except in the case of gross or willful negligence on our part, be liable or responsible for any loss, costs, damages, or expenses incurred or sustained by anyone resulting from any interpretation made by any of our officers, agents or employees. These interpretations are also subject to our general terms and conditions set out in our current Price Schedule.

Comments

Drilling Contractor :
 Town Oilfield Services, Inc.

Database File: baldwin2aiw.db
 Dataset Pathname: pass1
 Presentation Format: gr-n-ccl
 Dataset Creation: Mon Oct 15 09:58:03 2012 by Log SCH 111116
 Charted by: Depth in Feet scaled 1:240



10-17-2012
 Perforated Interval
 831.0 - 841.0 31 Perfs
 2" DML RTG