



**MIDWEST SURVEYS**  
 LOGGING - PERFORATING - CONSULTING SERVICES  
 P.O. Box 68, Osawatomie, KS 66064  
 913 / 755 - 2428

**GAMMA RAY / NEUTRON / CCL**

File No. \_\_\_\_\_

Company **RJ Enterprises**

Well **Kent No. 2-1**

Field **Bush City Shoestring**

County **Anderson** State **Kansas**

Location **5068 FSL & 1468 FEL**  
**NE-NE-NW-NE**

Other Services  
**Perforate**

Sec. **18** Twp. **21S** Rge. **21E**  
 Permanent Datum **GL** Elevation **NA**  
 Log Measured From **GL** KB NA  
 Drilling Measured From **GL** DF NA  
**GL NA**

Date **09-28-2012**

Run Number **One**

Depth Driller **665.0**

Depth Logger **699.0**

Bottom Logged Interval **658.0**

Top Log Interval **20.0**

Fluid Level **Full**

Type Fluid	Water
Density / Viscosity	NA
Salinity - PPM Cl	NA
Max Recorded Temp	NA
Estimated Cement Top	0.0
Equipment No.	104
Recorded By	Gary Windisch
Witnessed By	Jason Kent

BORE-HOLE RECORD		CASING RECORD	
RUN No.	BIT FROM TO	SIZE	WGT.
One	9.875" 0.0 20.0	7.00"	0.0
Two	5.625" 20.0 695.0	2.875"	0.0
			FROM TO
			0.0 20.0
			659.0 659.0

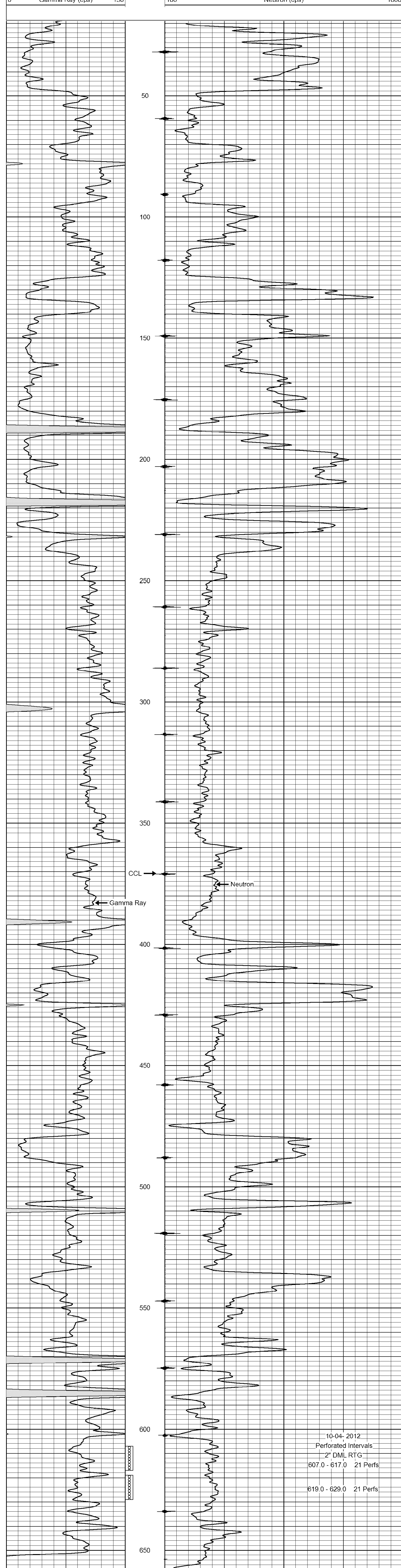
<<< Fold Here >>>

All interpretations are opinions based on inferences from electrical or other measurements and we cannot and do not guarantee the accuracy or correctness of any interpretation, and we shall not, except in the case of gross or willful negligence on our part, be liable or responsible for any loss, costs, damages, or expenses incurred or sustained by anyone resulting from any interpretation made by any of our officers, agents or employees. These interpretations are also subject to our general terms and conditions set out in our current Price Schedule.

Comments

Drilling Contractor :  
**RJ Enterprises**

Database File: kent2i.db  
 Dataset Pathname: pass1  
 Presentation Format: gr-n-ccl  
 Dataset Creation: Fri Sep 28 09:04:39 2012 by Log SCH 111116  
 Charted by: Depth in Feet scaled 1:240



10-04-2012  
 Perforated Intervals  
 2" DML RTG  
 607.0 - 617.0 21 Perfs  
 619.0 - 629.0 21 Perfs