



SUPERIOR
Hays,
Kansas

**DUAL
INDUCTION
LOG**

Company DREILING OIL, INC.
Well GRABBE "B" #2
Field SCHOENCHEN WEST
County ELLIS
State KANSAS

Company DREILING OIL, INC.
Well GRABBE "B" #2
Field SCHOENCHEN WEST
County ELLIS State KANSAS

Location: API # : 15-051-26304-0000
330' FNL & 330' FEL
NE - NE - NE/4
SEC 20 TWP 15S RGE 18W
Permanent Datum GROUND LEVEL Elevation 2006
Log Measured From KELLY BUSHING & A.G.L.
Drilling Measured From KELLY BUSHING
Elevation
Other Services
CDL/CNL
MEL
K.B. 2014
D.F. 2012
G.L. 2006

Date	5/22/12
Run Number	ONE
Depth Driller	3676
Depth Logger	3674
Bottom Logged Interval	3672
Top Log Interval	0
Casing Driller	8 5/8" @ 1175
Casing Logger	1175
Bit Size	7 7/8
Type Fluid in Hole	CHEMICAL MUD
Density / Viscosity	8.9/54
pH / Fluid Loss	10.0/10.4
Source of Sample	FLOWLINE
Rim @ Meas. Temp	0.40 @ 81F
Rmf @ Meas. Temp	0.30 @ 81F
Rmc @ Meas. Temp	0.48 @ 81F
Source of Rmf / Rmc	MEASURED
Rim @ BHT	0.29 @ 113F
Time Circulation Stopped	2 HOURS
Time Logger on Bottom	
Maximum Recorded Temperature	113F
Equipment Number	680
Location	HAYS, KS.
Recorded By	JEFF GRONEMEG
Witnessed By	ROGER FISHER

<<< Fold Here >>>

All interpretations are opinions based on inferences from electrical or other measurements and we cannot and do not guarantee the accuracy or correctness of any interpretation, and we shall not, except in the case of gross or willful negligence on our part, be liable or responsible for any loss, costs, damages, or expenses incurred or sustained by anyone resulting from any interpretation made by any of our officers, agents or employees. These interpretations are also subject to our general terms and conditions set out in our current Price Schedule.

Comments

THANK YOU FOR USING SUPERIOR WELL SERVICE (785) 628-6395
DIRECTIONS
HAYS, KS - SOUTH TO CHETOLAH GOLD RD (HAYS MACK)
2 MILES WEST TO T IN ROAD - WEST INTO

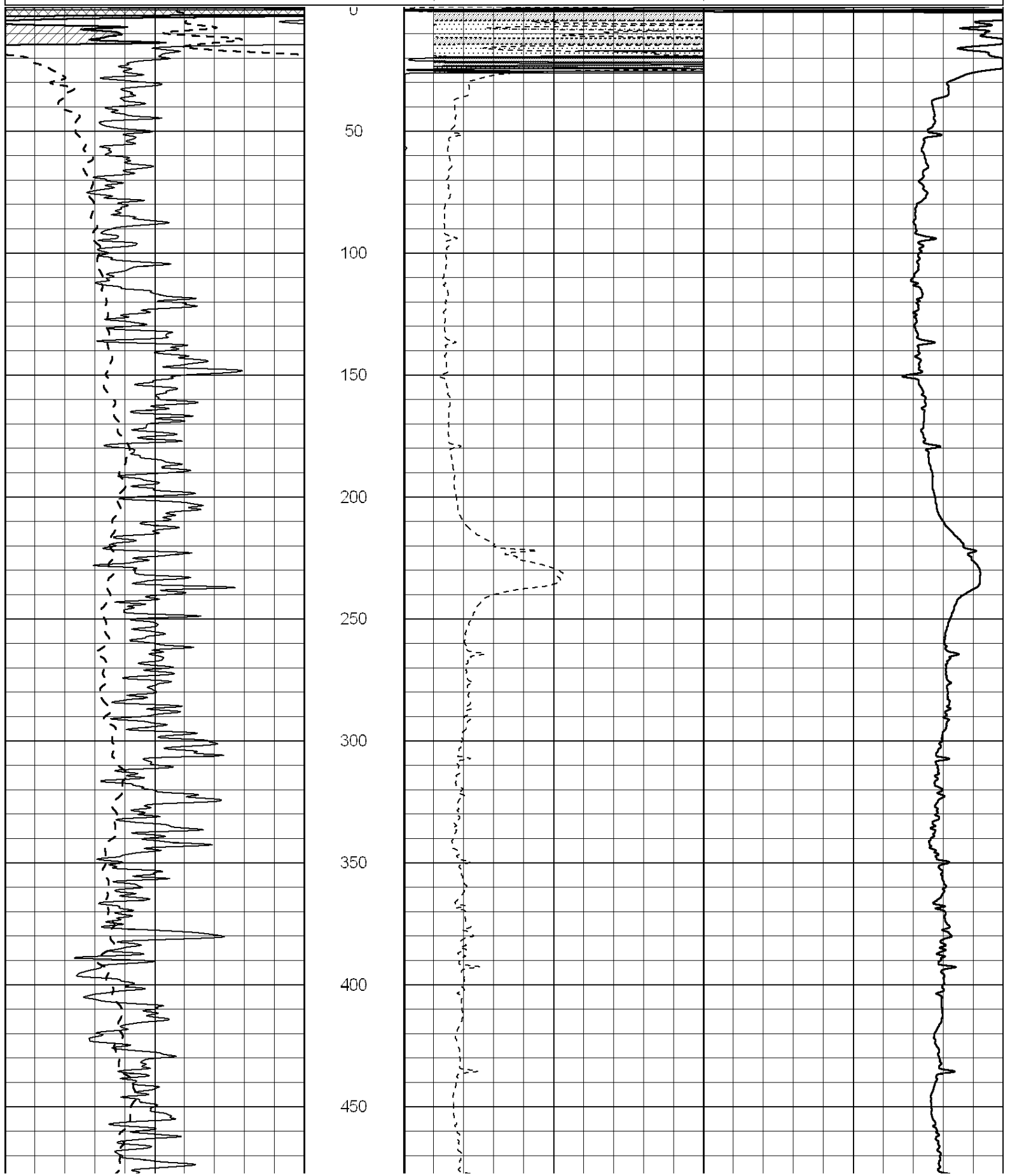
Database File: 009203ddn.db
Dataset Pathname: pass3.3
Presentation Format: _dil2
Dataset Creation: Tue May 22 10:51:21 2012 by Calc Open-Cased 090629
Charted by: Depth in Feet scaled 1:600

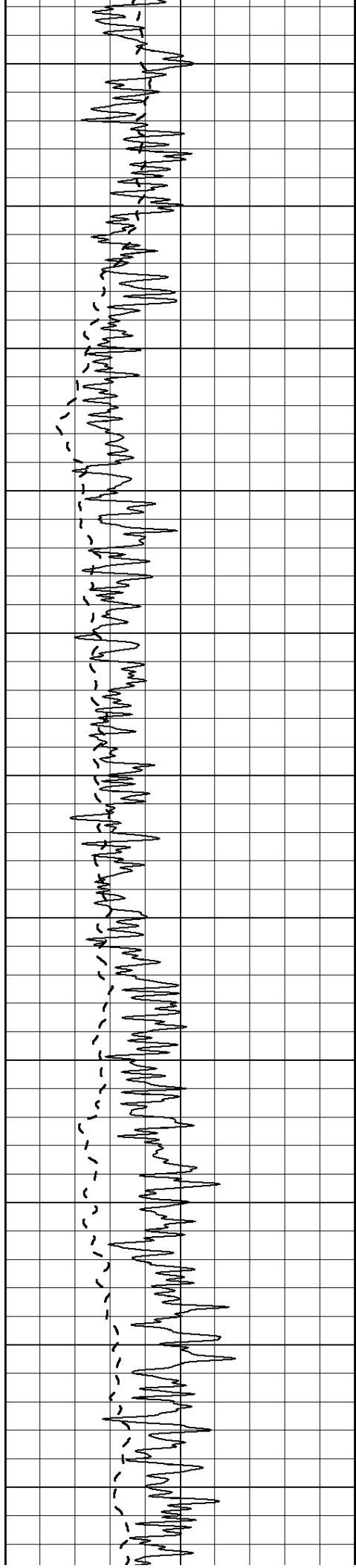
0	Gamma Ray (GAPI)	150
-100	SP (mV)	100

0	RLL3 (Ohm-m)	50
0	Deep Induction (Ohm-m)	50

1000	CILD (mmho/m)	0
------	---------------	---

50	RILD X10 (Ohm-m)	500
50	RLL3 X10 (Ohm-m)	500





500

550

600

650

700

750

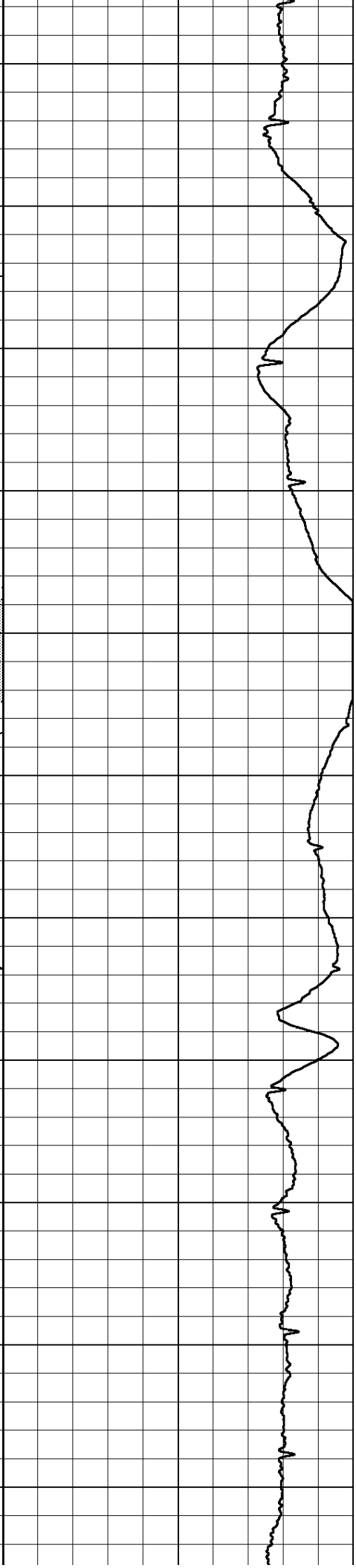
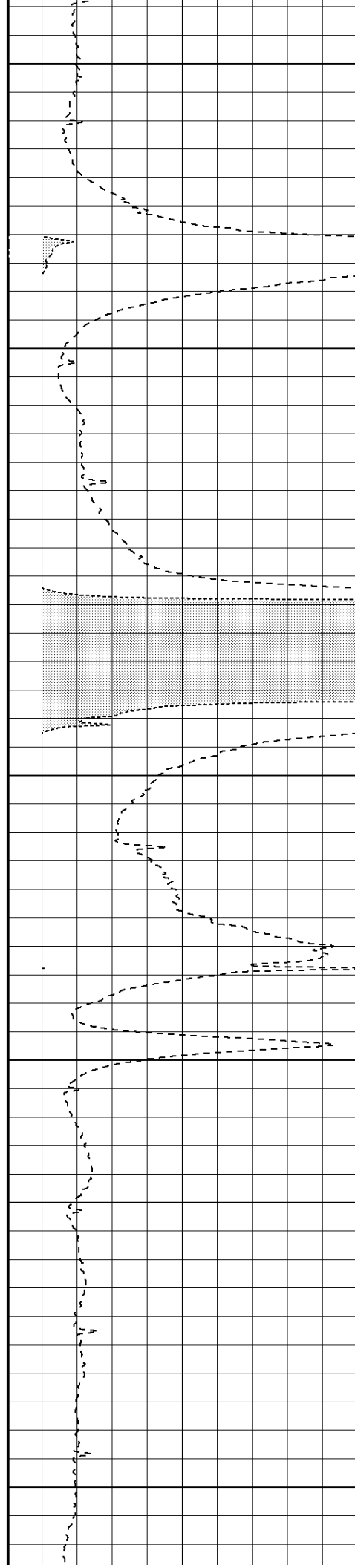
800

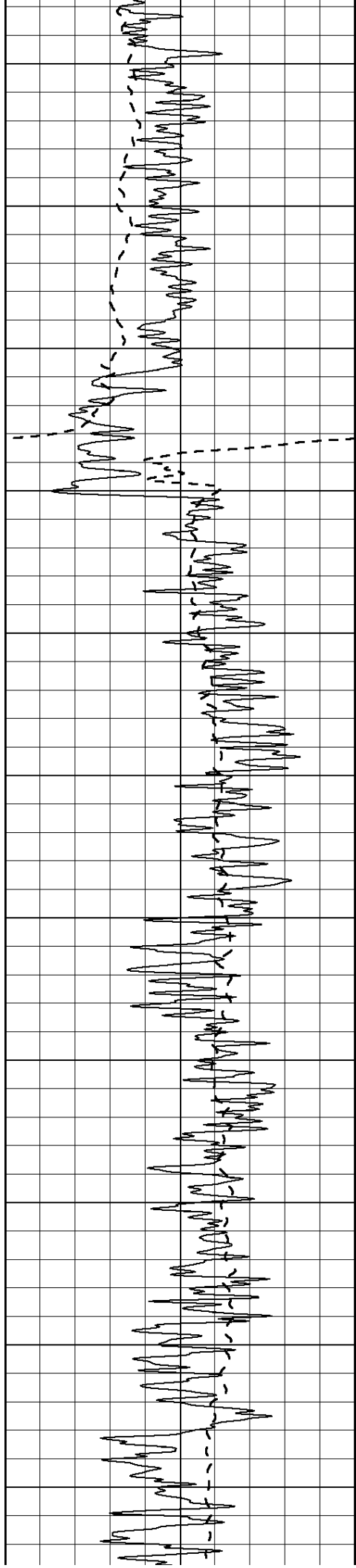
850

900

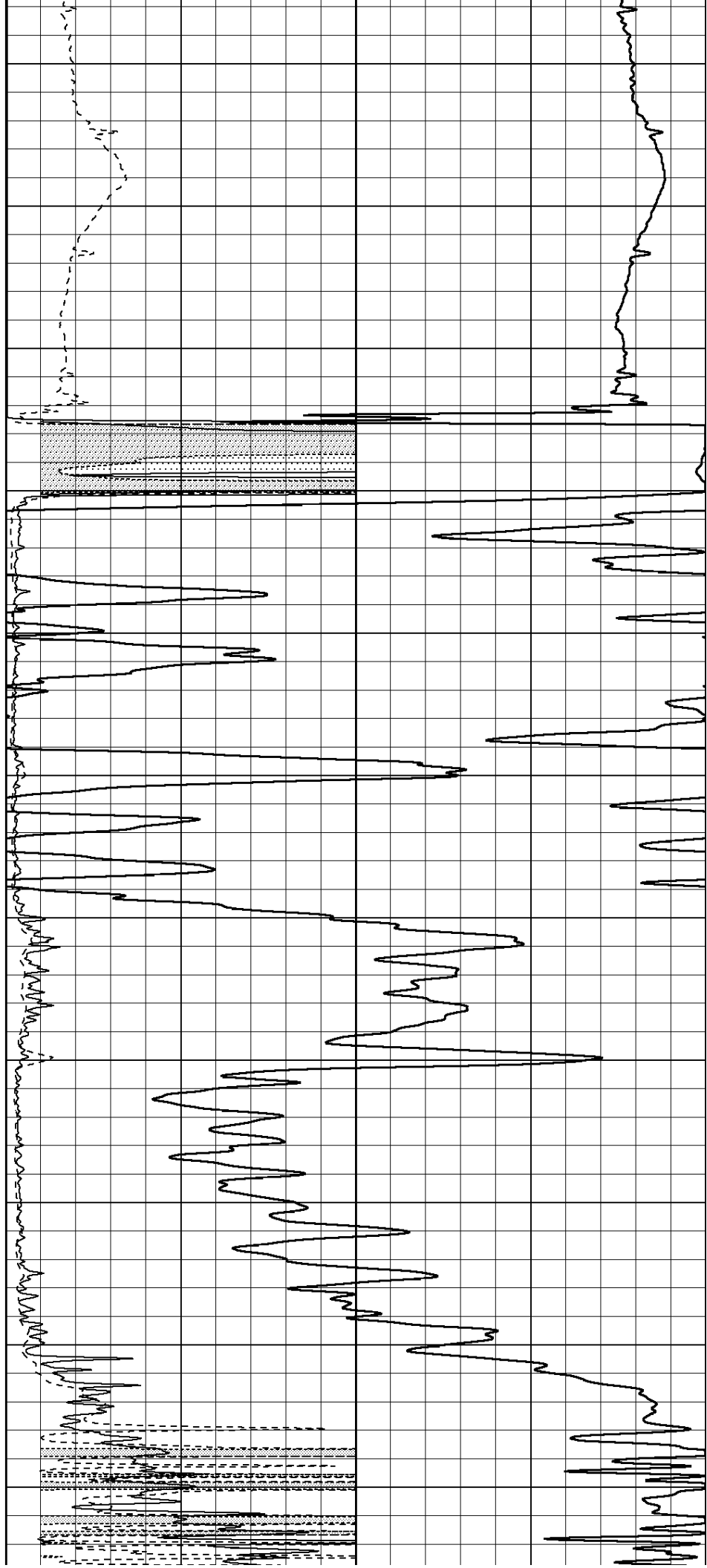
950

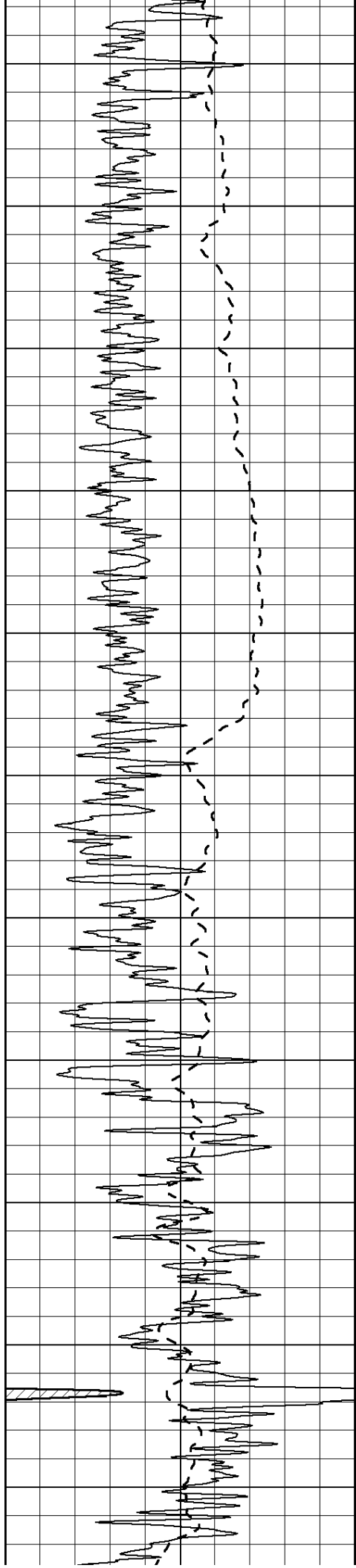
1000



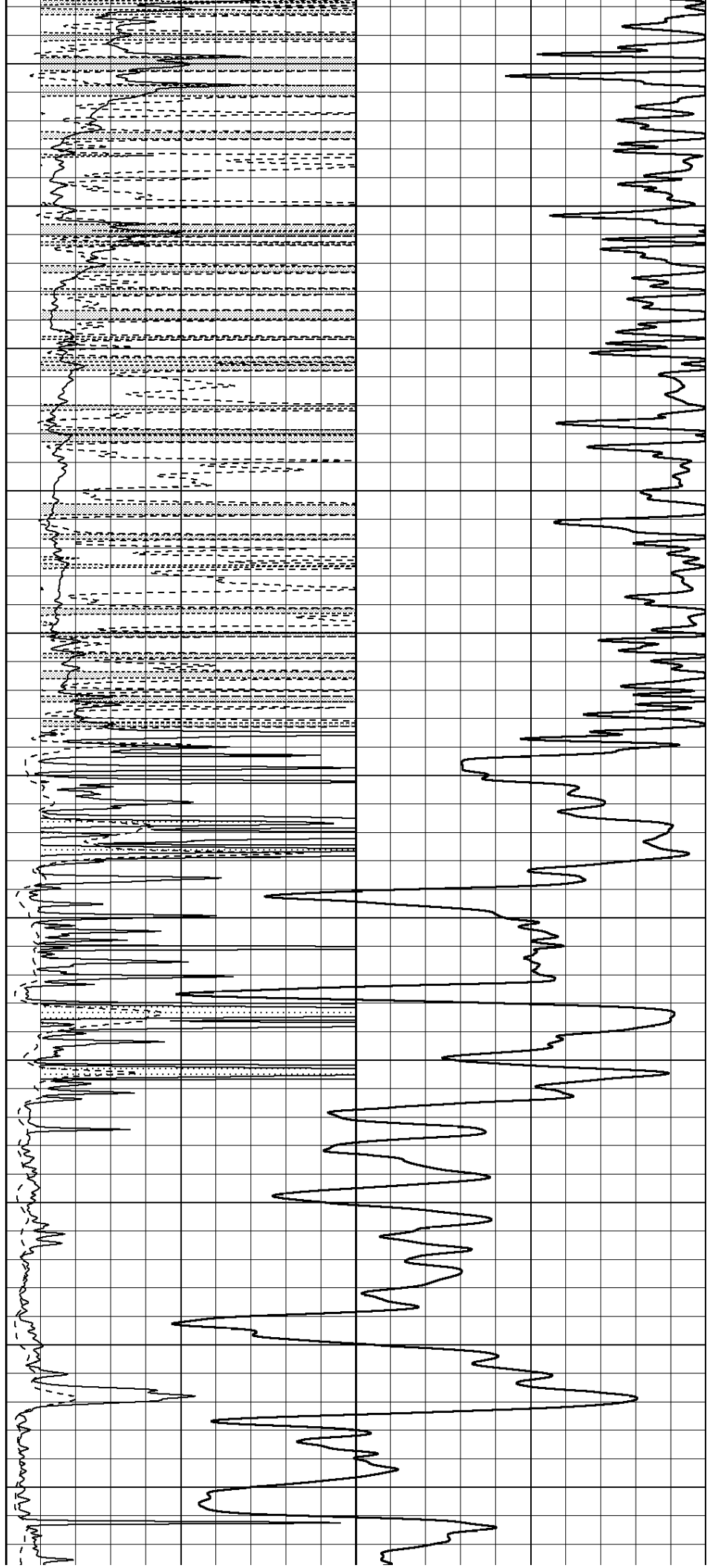


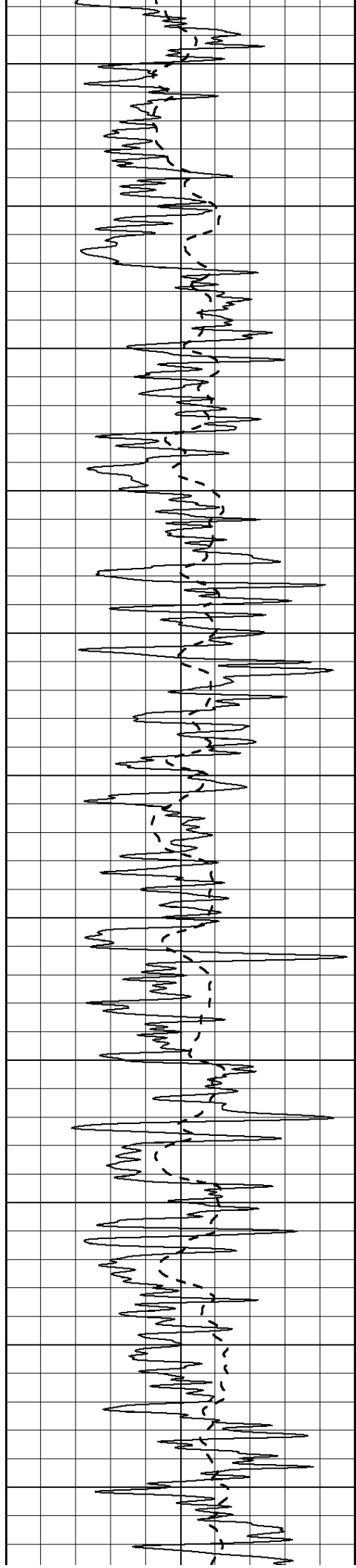
1050
1100
1150
1200
1250
1300
1350
1400
1450
1500
1550



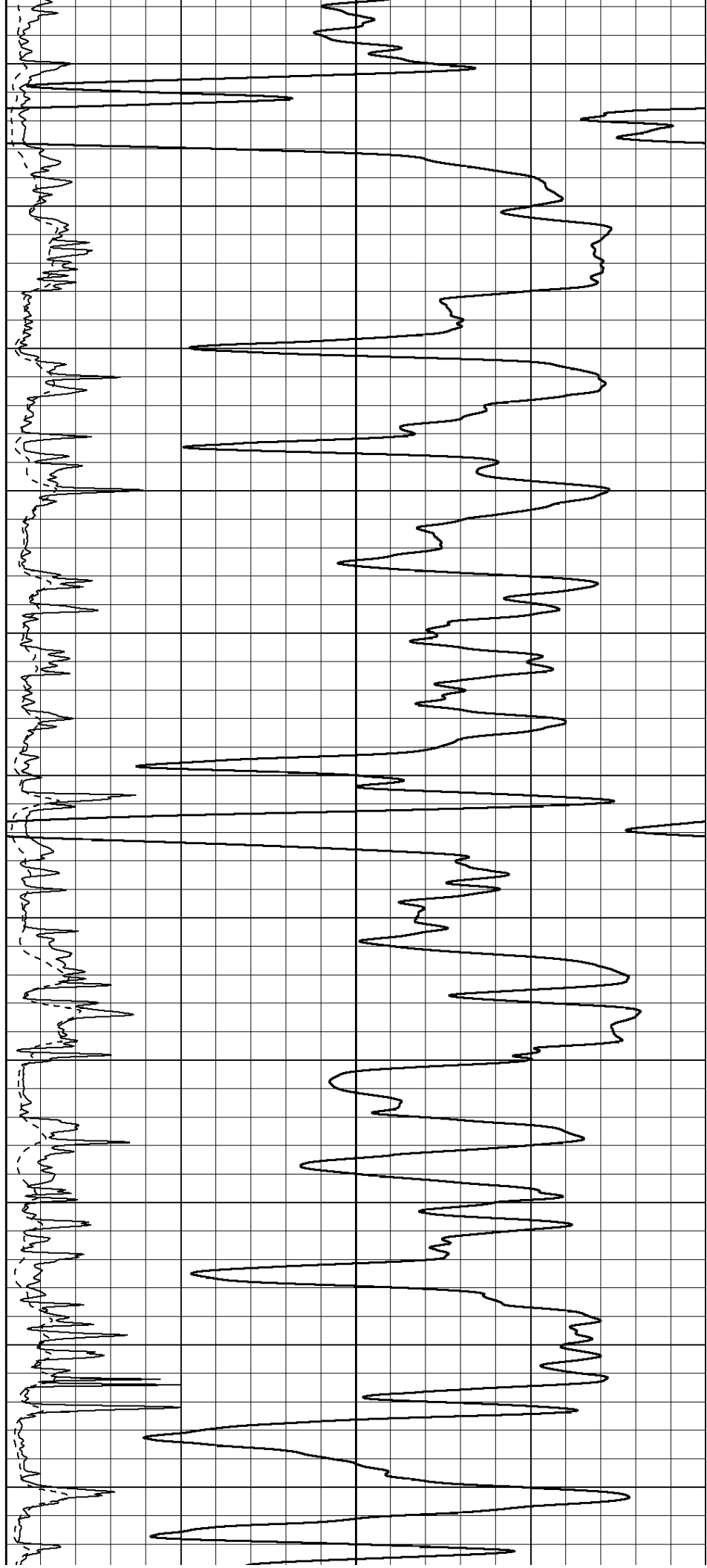


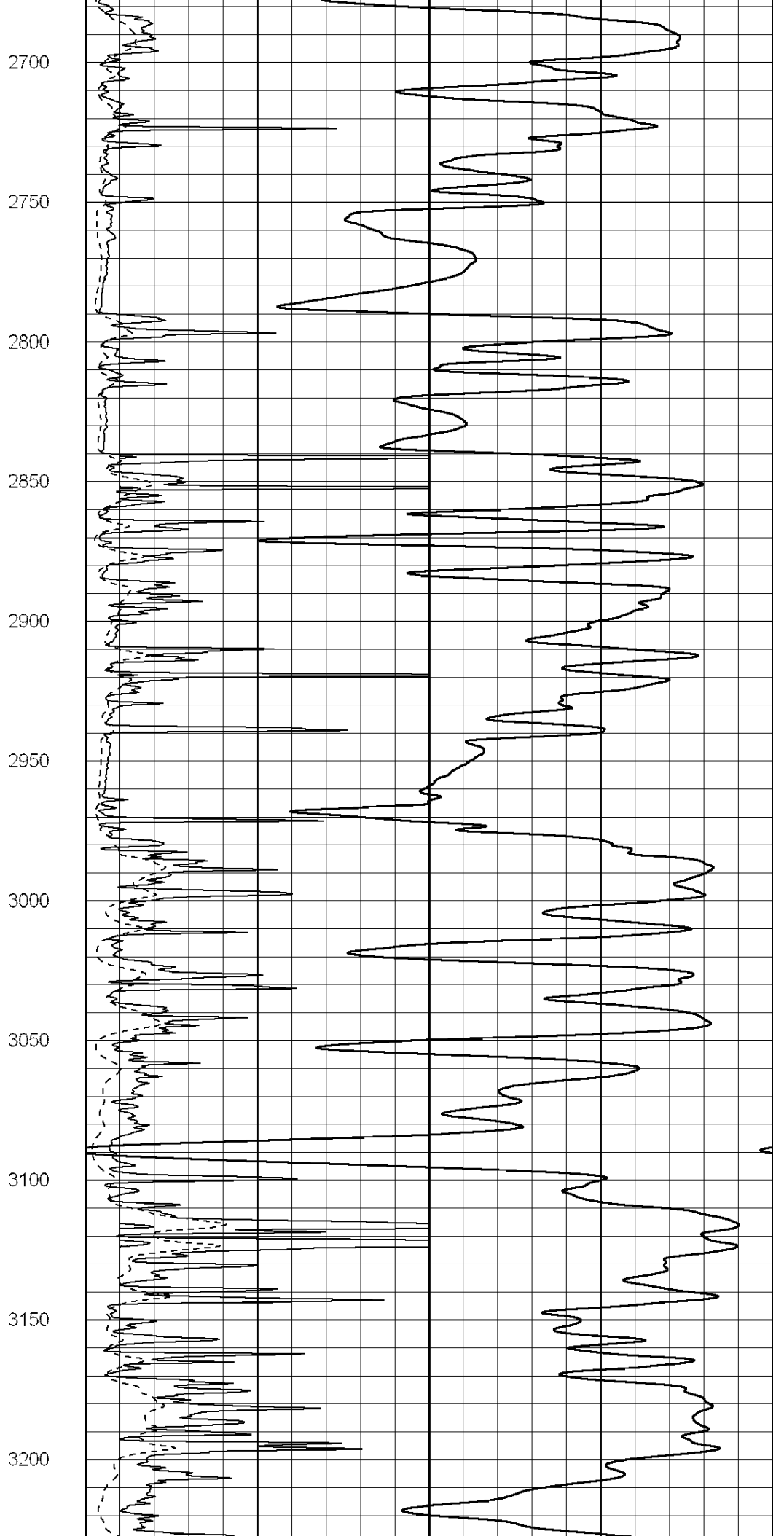
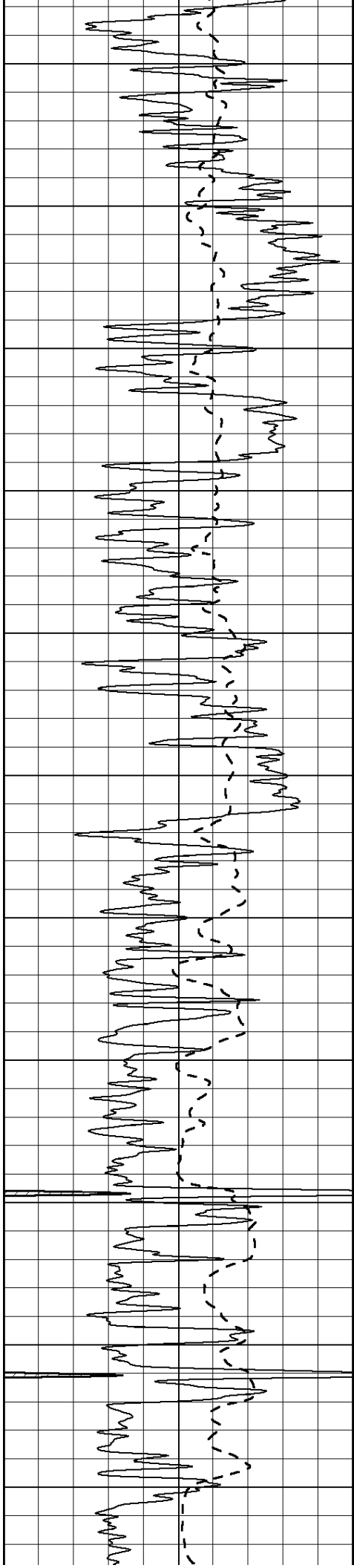
1600
1650
1700
1750
1800
1850
1900
1950
2000
2050
2100

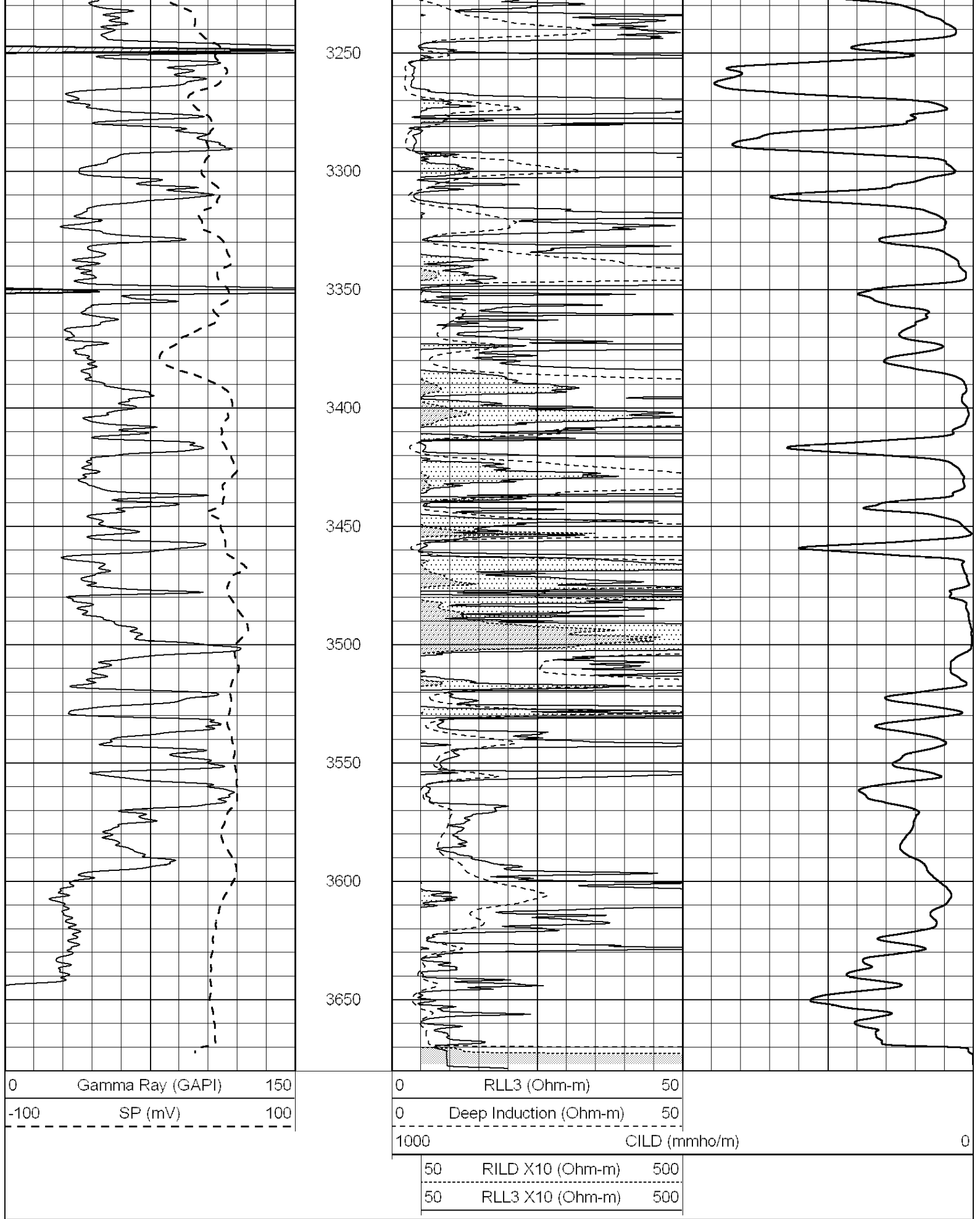




2150
2200
2250
2300
2350
2400
2450
2500
2550
2600
2650



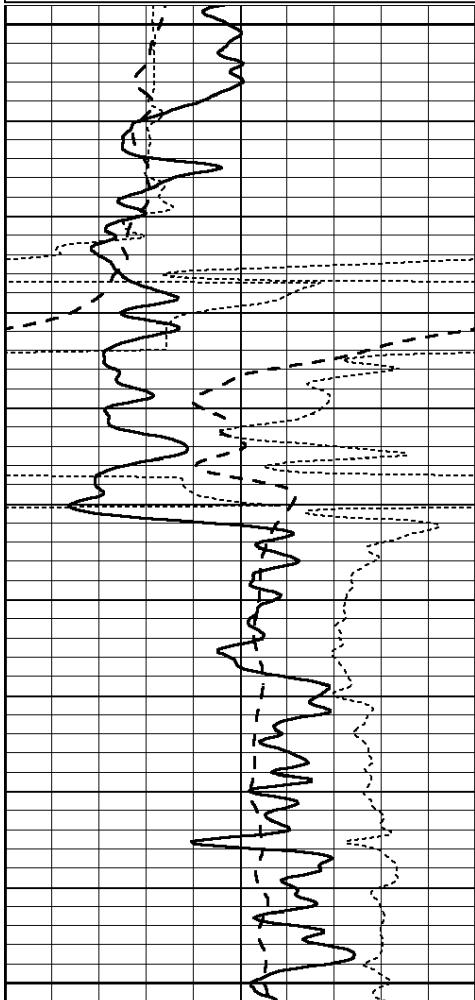




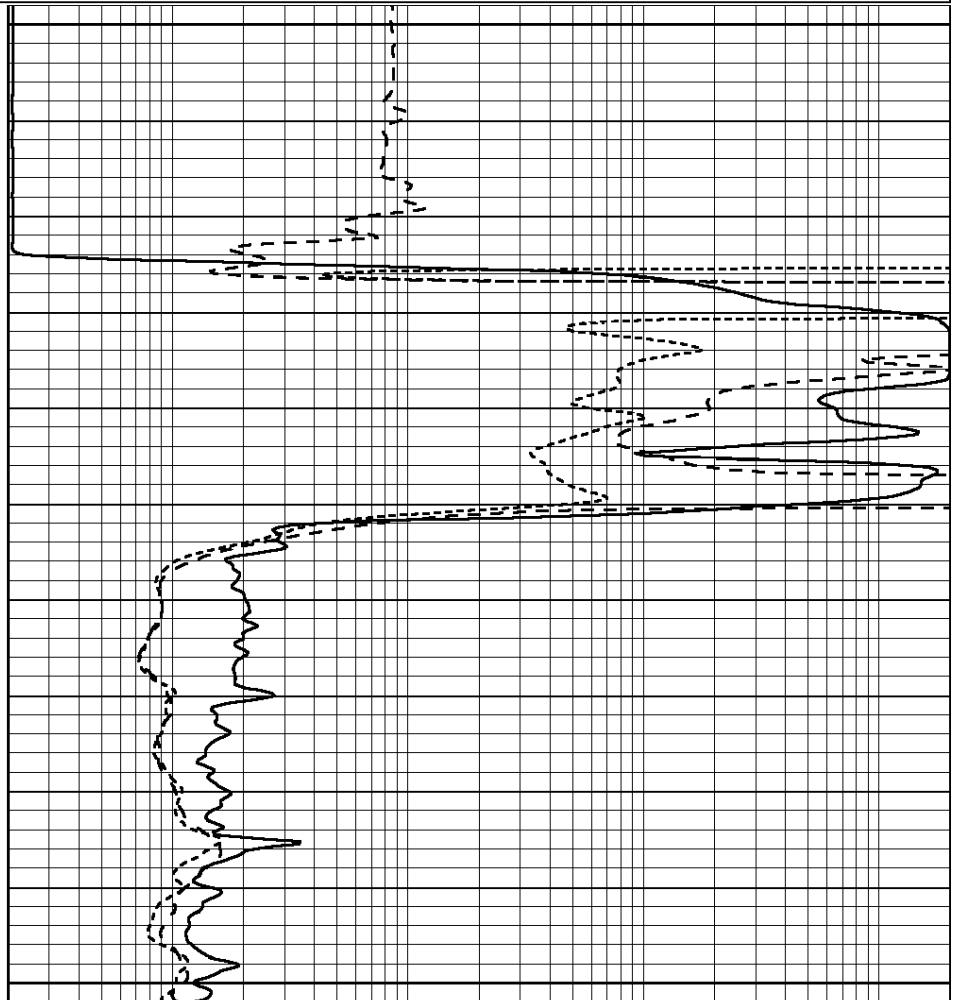
Presentation Format: _dil
 Dataset Creation: Tue May 22 10:51:21 2012 by Calc Open-Cased 090629
 Charted by: Depth in Feet scaled 1:240

0	GAMMA RAY (GAPI)	150
-100	SP (mV)	100
-250	Rxo/Rt	50

0.2	SHALLOW GUARD (Ohm-m)	2000
0.2	MEDIUM INDUCTION (Ohm-m)	2000
0.2	DEEP INDUCTION (Ohm-m)	2000



1150
1200
1250



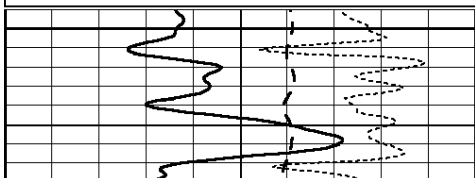
0	GAMMA RAY (GAPI)	150
-100	SP (mV)	100
-250	Rxo/Rt	50

0.2	SHALLOW GUARD (Ohm-m)	2000
0.2	MEDIUM INDUCTION (Ohm-m)	2000
0.2	DEEP INDUCTION (Ohm-m)	2000

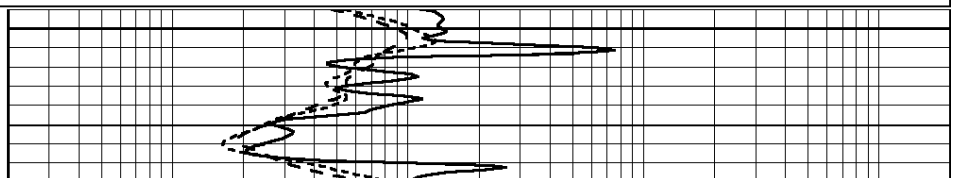
Database File: 009203ddn.db
 Dataset Pathname: pass3.3
 Presentation Format: _dil
 Dataset Creation: Tue May 22 10:51:21 2012 by Calc Open-Cased 090629
 Charted by: Depth in Feet scaled 1:240

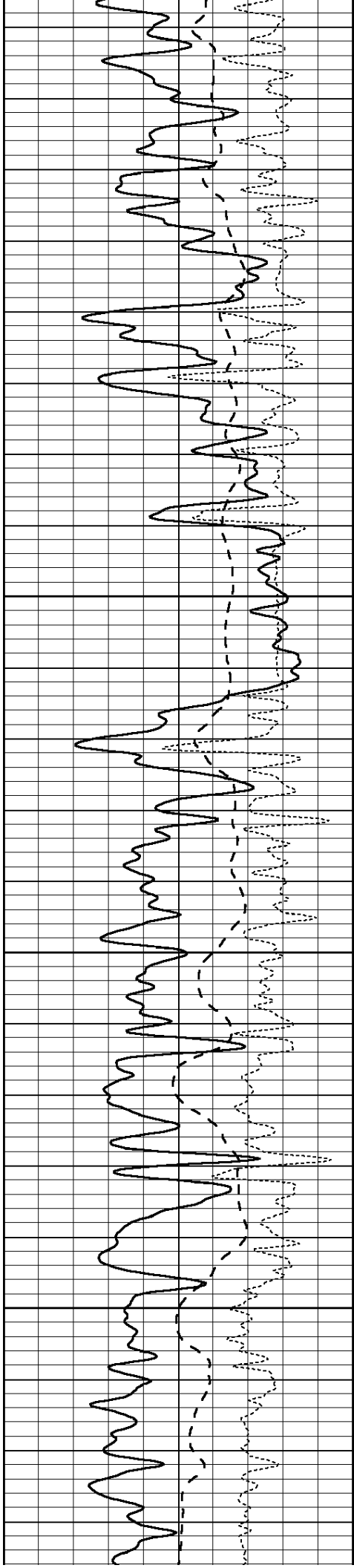
0	GAMMA RAY (GAPI)	150
-100	SP (mV)	100
-250	Rxo/Rt	50

0.2	SHALLOW GUARD (Ohm-m)	2000
0.2	MEDIUM INDUCTION (Ohm-m)	2000
0.2	DEEP INDUCTION (Ohm-m)	2000



2850



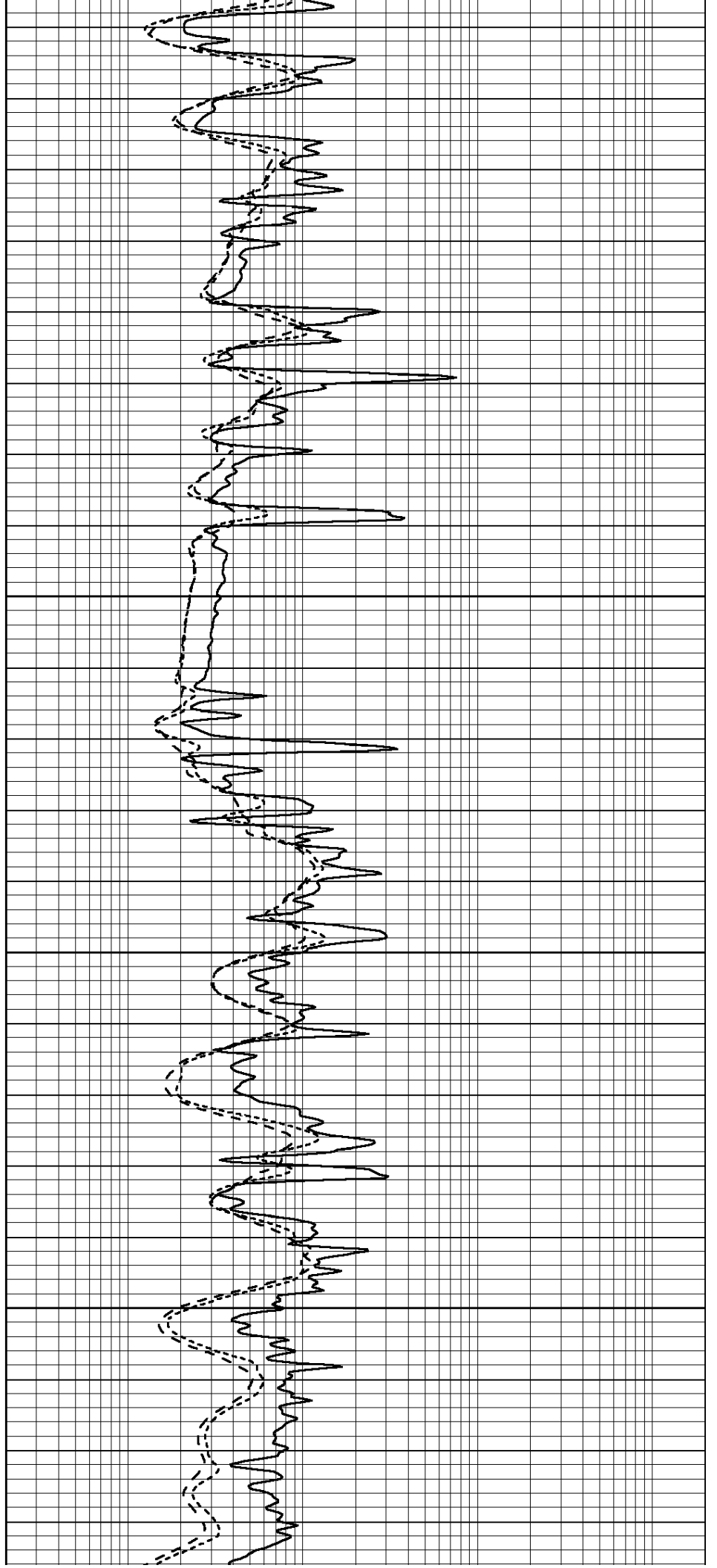


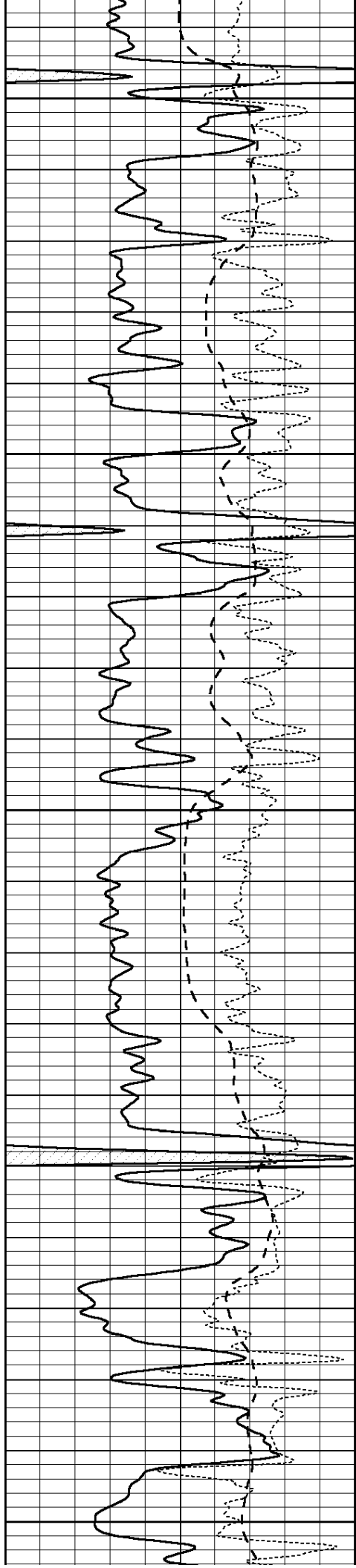
2900

2950

3000

3050





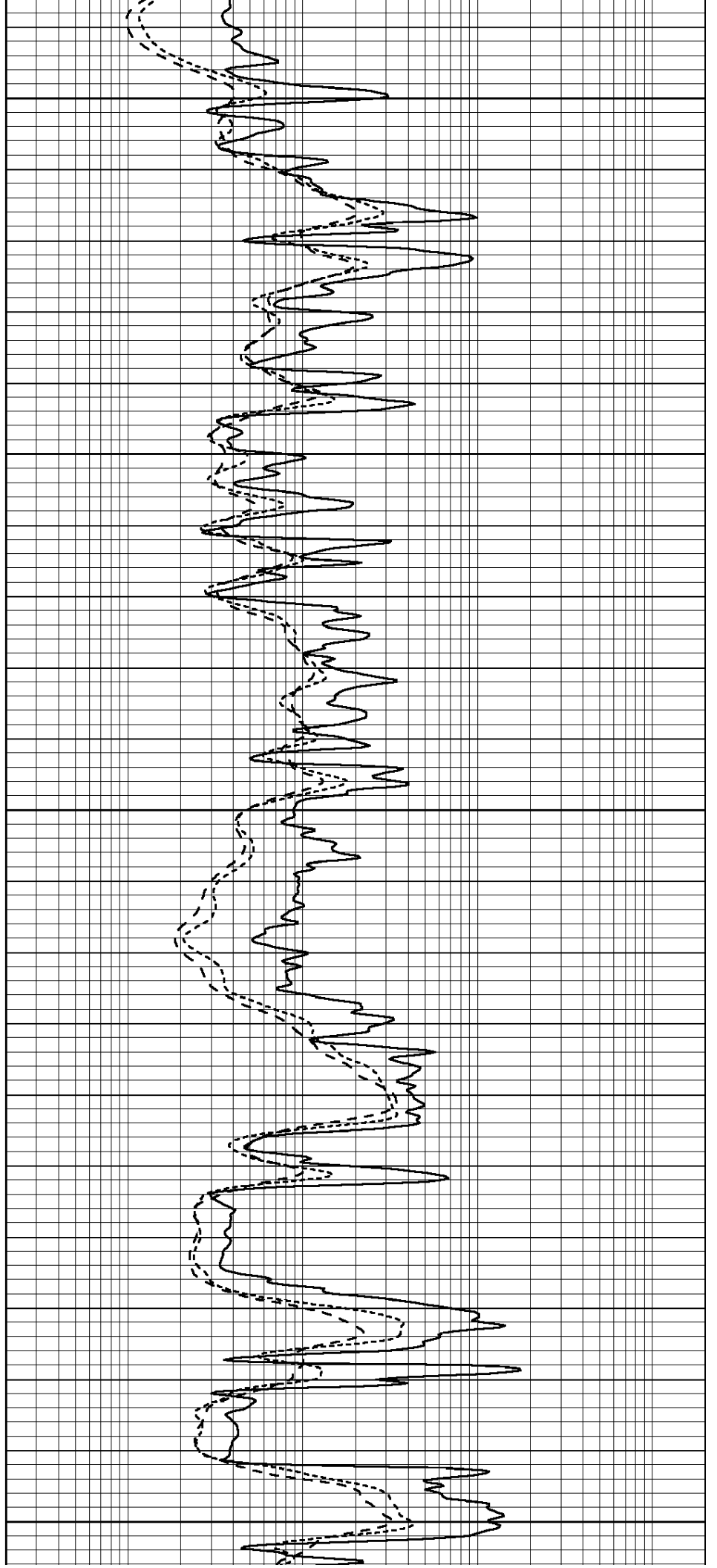
3100

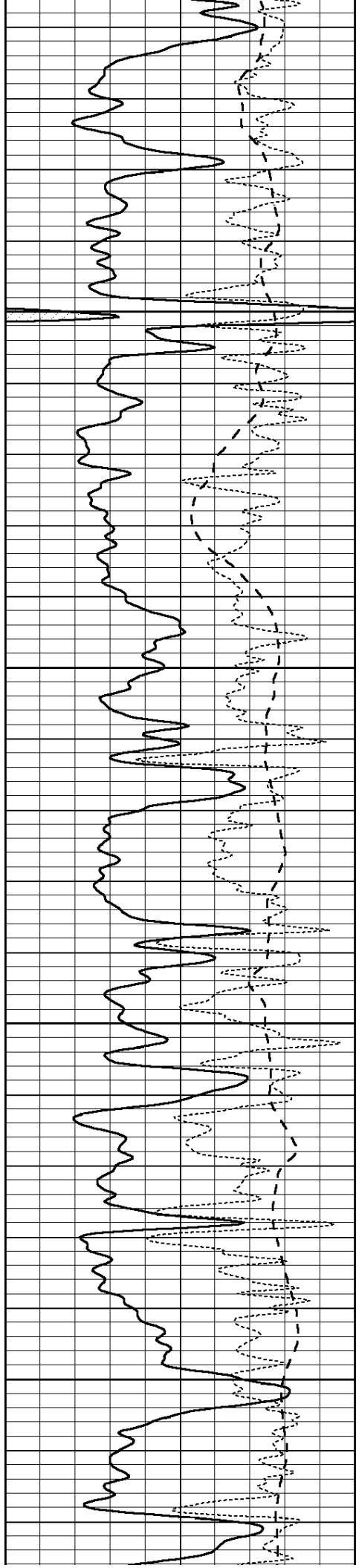
3150

3200

3250

3300



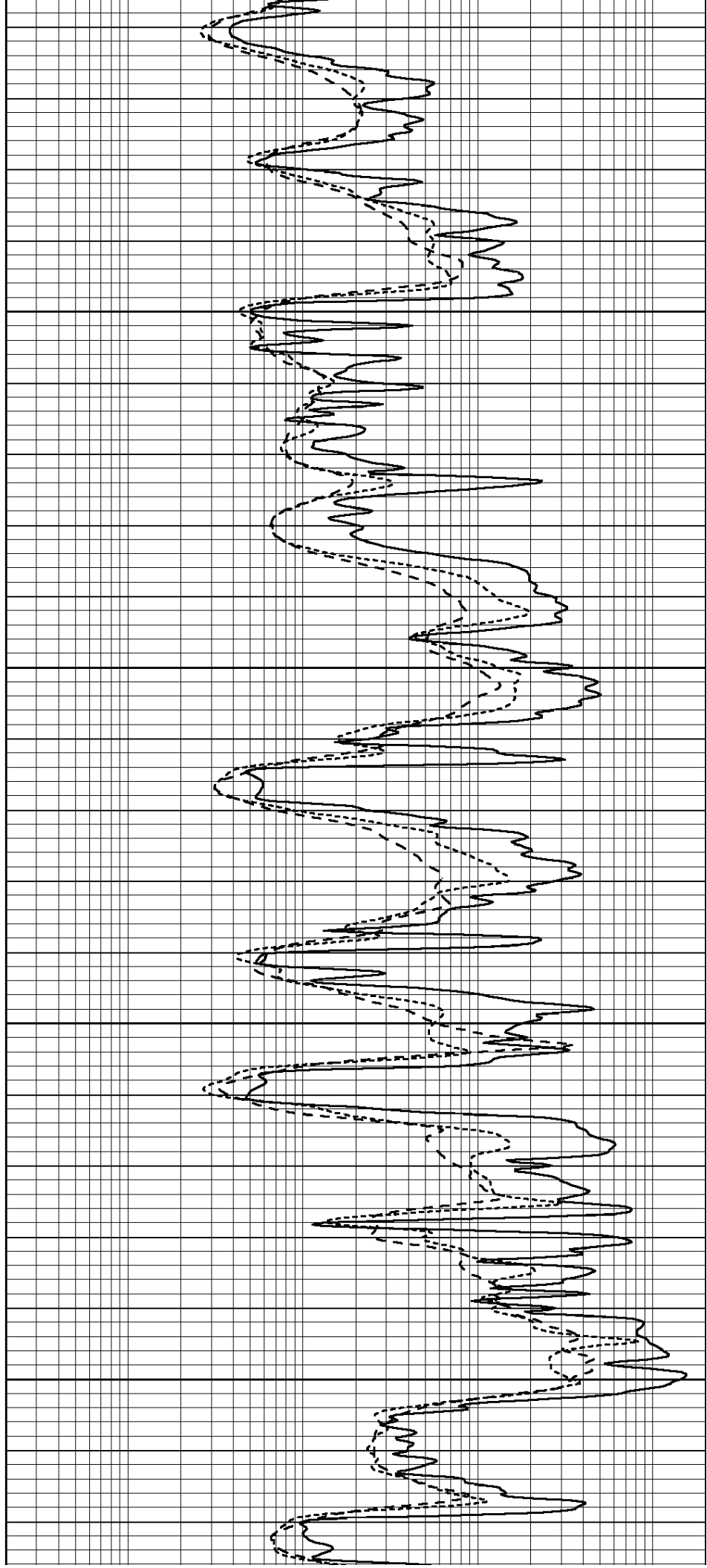


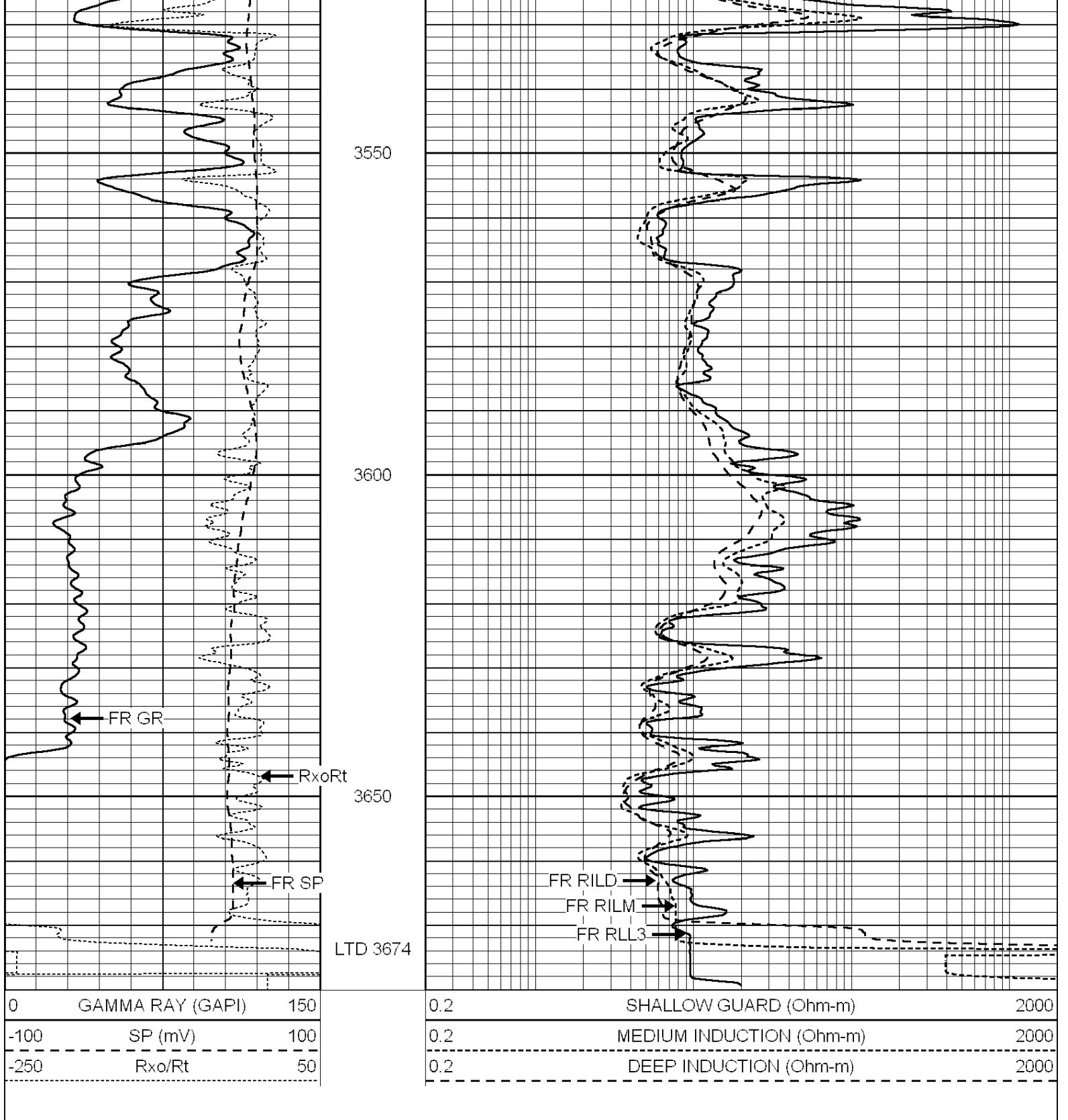
3350

3400

3450

3500





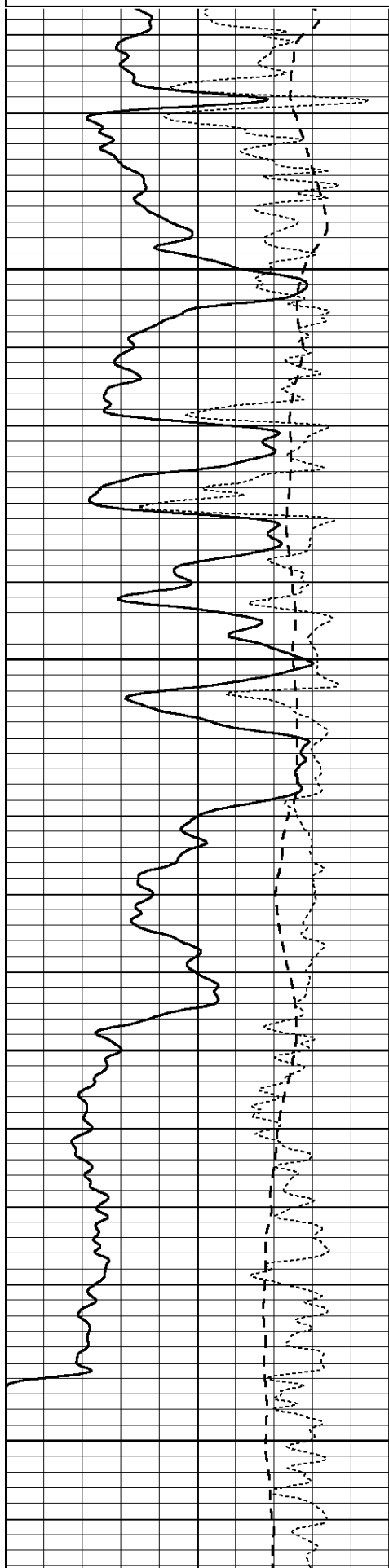
SUPERIOR
Hays,
Kansas

REPEAT SECTION

Database File: 009203ddn.db
 Dataset Pathname: pass2.3
 Presentation Format: _dil
 Dataset Creation: Tue May 22 09:47:57 2012 by Calc Open-Cased 090629
 Charted by: Depth in Feet scaled 1:240

0	GAMMA RAY (GAPI)	150
-100	SP (mV)	100
-250	Rxo/Rt	50

0.2	SHALLOW GUARD (Ohm-m)	2000
0.2	MEDIUM INDUCTION (Ohm-m)	2000
0.2	DEEP INDUCTION (Ohm-m)	2000

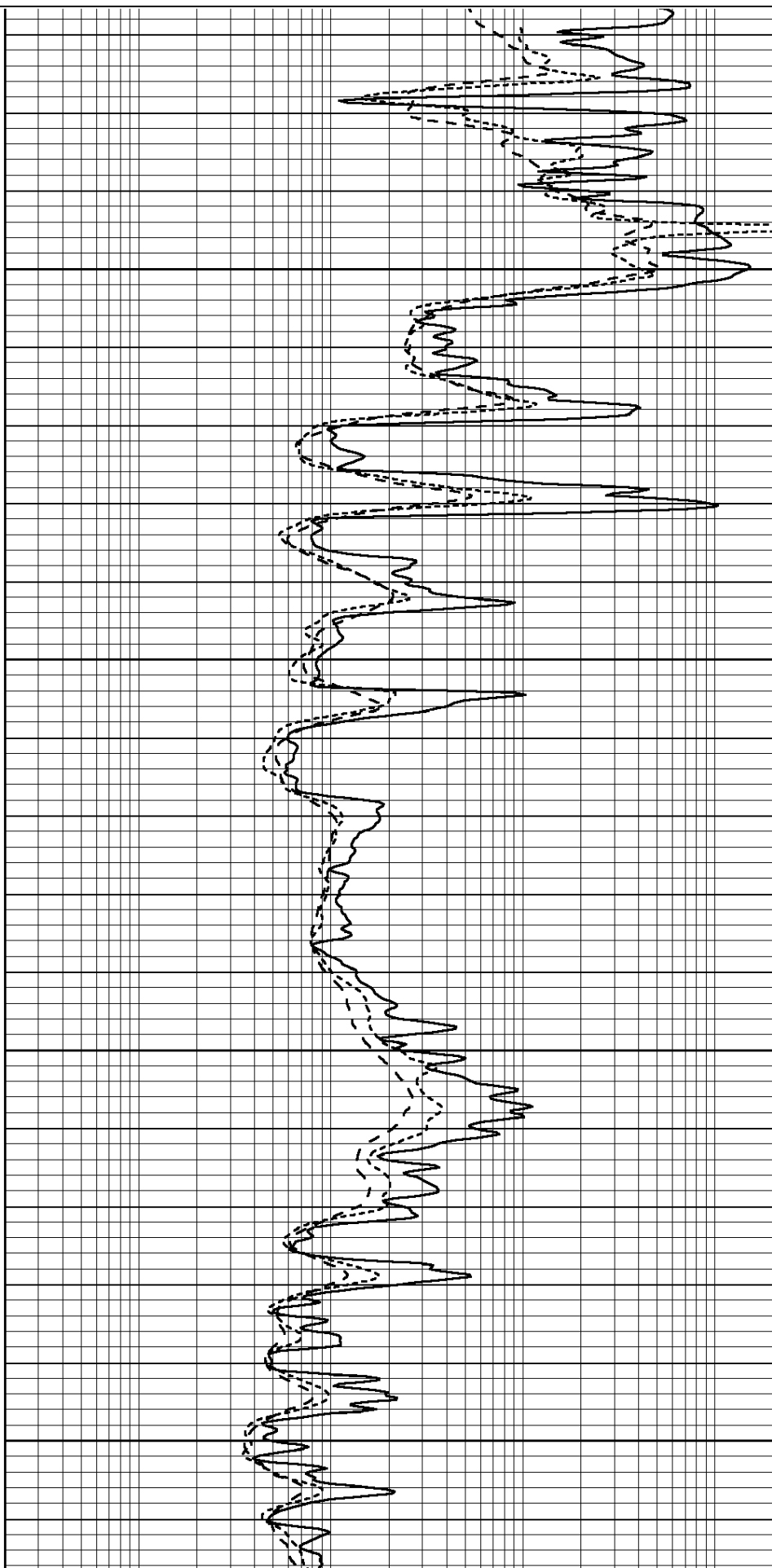


3500

3550

3600

3650



Magnesium	1.710	g/cc	1015.91	497.51	cps
Aluminum	2.600	g/cc	227.67	350.20	cps

Spine Angle = 76.79

Density/Spine Ratio = 0.579

	Size		Reading	
Small Ring	8.00	in	2.25	V
Large Ring	14.00	in	4.37	V

Compensated Neutron Calibration Report

Serial Number: 6I
Tool Model: G

CALIBRATION

Detector	Readings		Target		Normalization
Short Space	1.00	cps	1.00	cps	1.0000
Long Space	1.00	cps	1.00	cps	1.0000

Gamma Ray Calibration Report

Serial Number: #8
Tool Model: OPEN
Performed: Mon Jun 13 16:56:43 2011

Calibrator Value: 150.0 GAPI

Background Reading: 0.0 cps
Calibrator Reading: 175.0 cps

Sensitivity: 0.8371 GAPI/cps