



SUPERIOR
Hays,
Kansas

MICRO
LOG

Company DREILING OIL, INC.
Well GRABBE "B" #2
Field SCHOENCHEN WEST
County ELLIS
State KANSAS

Company DREILING OIL, INC.
Well GRABBE "B" #2
Field SCHOENCHEN WEST
County ELLIS State KANSAS

Location: API # : 15-051-26304-0000
330' FNL & 330' FEL
NE - NE - NE/4
SEC 20 TWP 15S RGE 18W
Permanent Datum GROUND LEVEL Elevation 2006
Log Measured From KELLY BUSHING & A.G.L.
Drilling Measured From KELLY BUSHING
Other Services
CDL/CNL
DIL
Elevation
K.B. 2014
D.F. 2012
G.L. 2006

Date	5/22/12		
Run Number	TWO		
Depth Driller	3676		
Depth Logger	3674		
Bottom Logged Interval	3672		
Top Log Interval	2850		
Casing Driller	8 5/8" @ 1175		
Casing Logger	1175		
Bit Size	7 7/8		
Type Fluid in Hole	CHEMICAL MUD	CHLORIDES 8,000 PPM	
Density / Viscosity	8.9/54		
pH / Fluid Loss	10.0/10.4		
Source of Sample	FLOWLINE		
Rin @ Meas. Temp	0.40 @ 81F		
Rmf @ Meas. Temp	0.30 @ 81F		
Rmc @ Meas. Temp	0.48 @ 81F		
Source of Rmf / Rmc	MEASURED		
Rin @ BHT	0.29 @ 113F		
Time Circulation Stopped	2 HOURS		
Time Logger on Bottom			
Maximum Recorded Temperature	113F		
Equipment Number	680		
Location	HAYS, KS.		
Recorded By	JEFF GRONEMEG		
Witnessed By	ROGER FISHER		

<<< Fold Here >>>

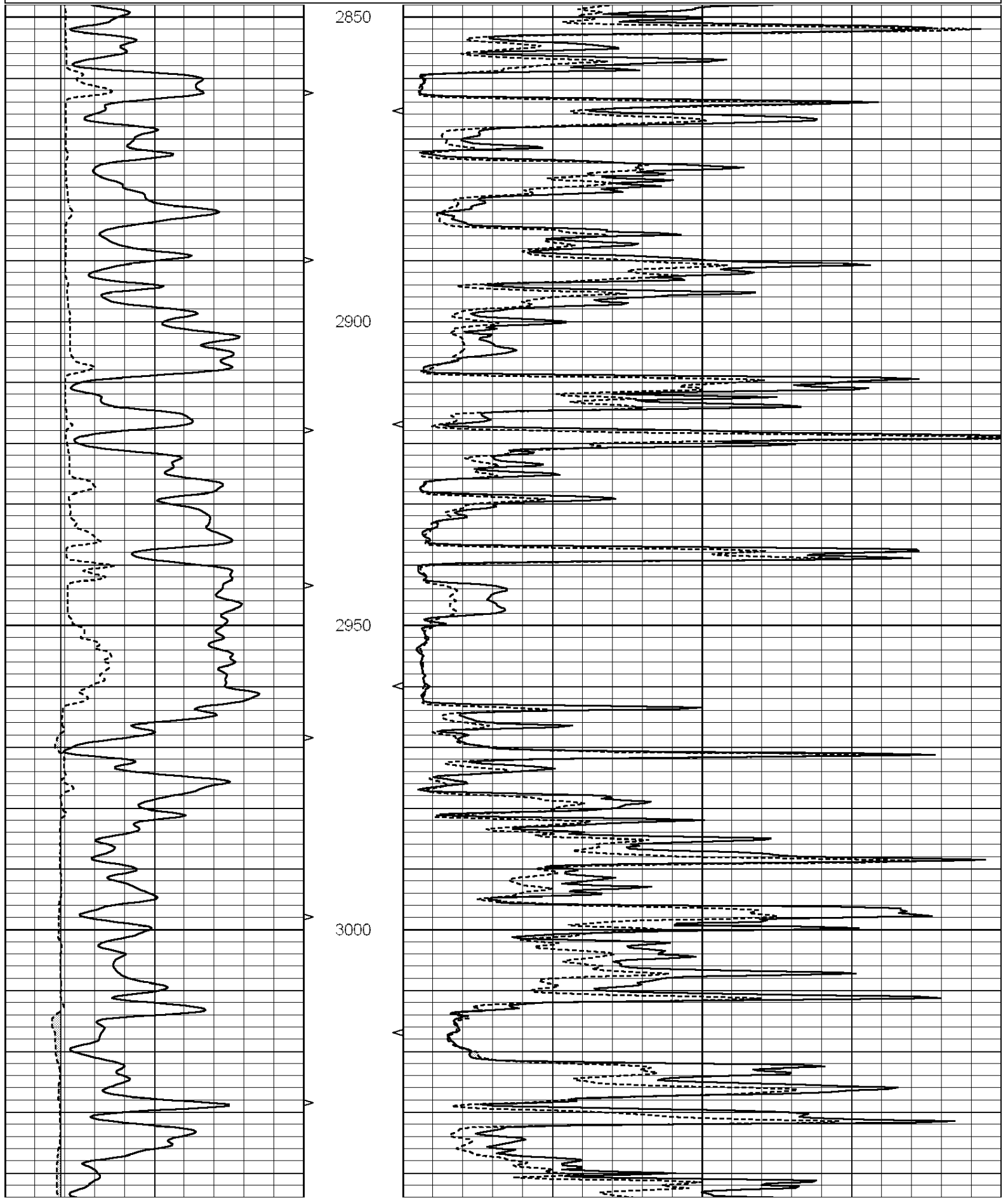
All interpretations are opinions based on inferences from electrical or other measurements and we cannot and do not guarantee the accuracy or correctness of any interpretation, and we shall not, except in the case of gross or willful negligence on our part, be liable or responsible for any loss, costs, damages, or expenses incurred or sustained by anyone resulting from any interpretation made by any of our officers, agents or employees. These interpretations are also subject to our general terms and conditions set out in our current Price Schedule.

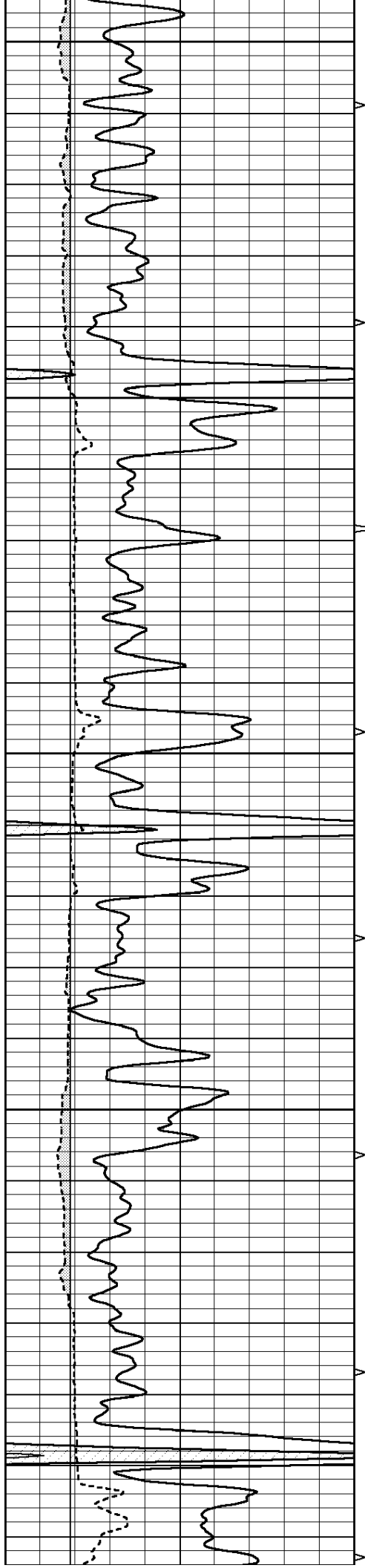
Comments

THANK YOU FOR USING SUPERIOR WELL SERVICE (785) 628-6395
DIRECTIONS
HAYS, KS - SOUTH TO CHETOLAH GOLD RD (HAYS MACK)
2 MILES WEST TO T IN ROAD - WEST INTO

Database File: 009203ddn.db
Dataset Pathname: pass5
Presentation Format: _micro
Dataset Creation: Tue May 22 10:53:00 2012 by Log Open-Cased 090629
Charted by: Depth in Feet scaled 1:240

0	GAMMA RAY (GAPI)	150	ABHV	0	MEL1.5 (Ohm-m)	40
6	CALIPER (in)	16	10 (ft3)	0 0	MEL2.0 (Ohm-m)	40
			TBHV			
			0 (ft3)			





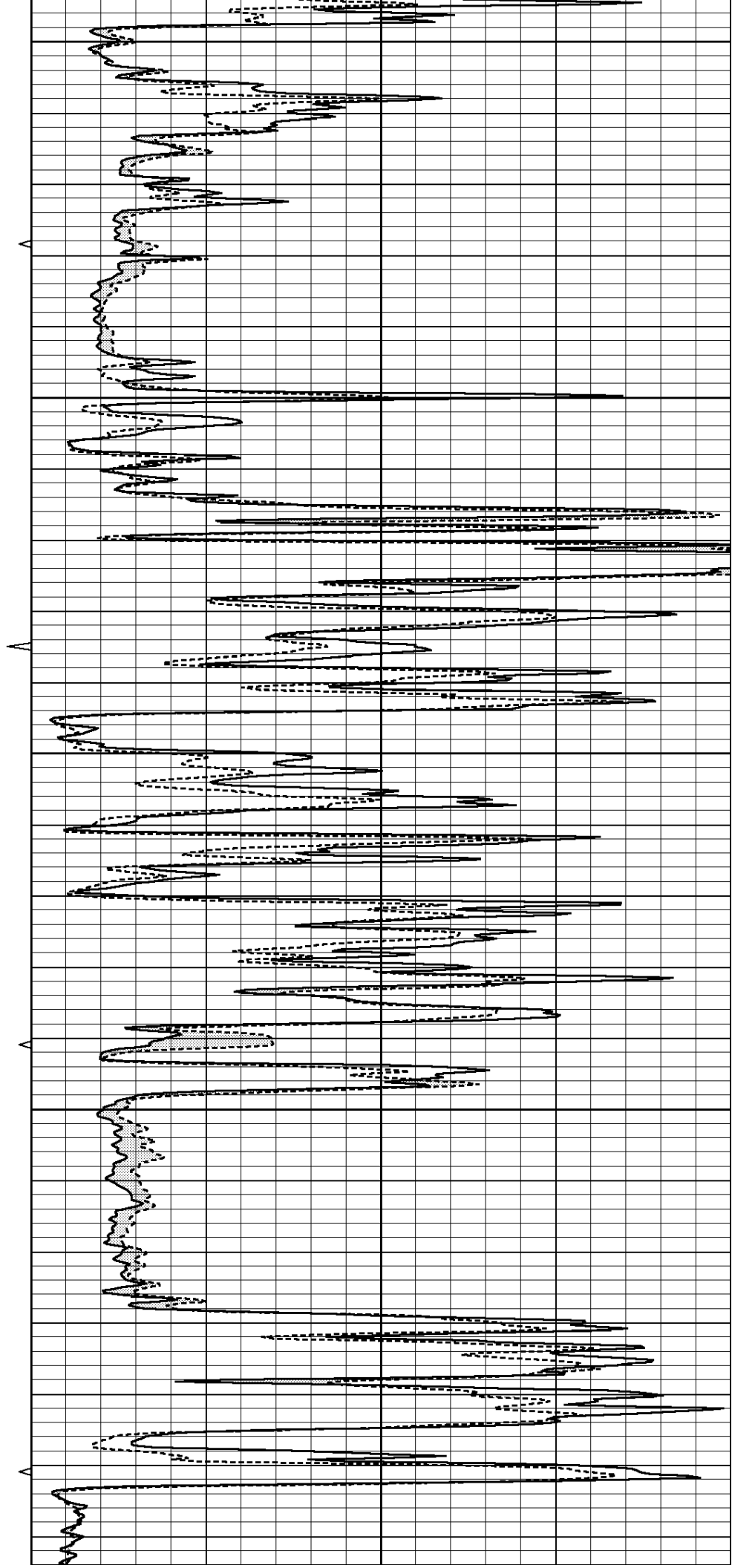
3050

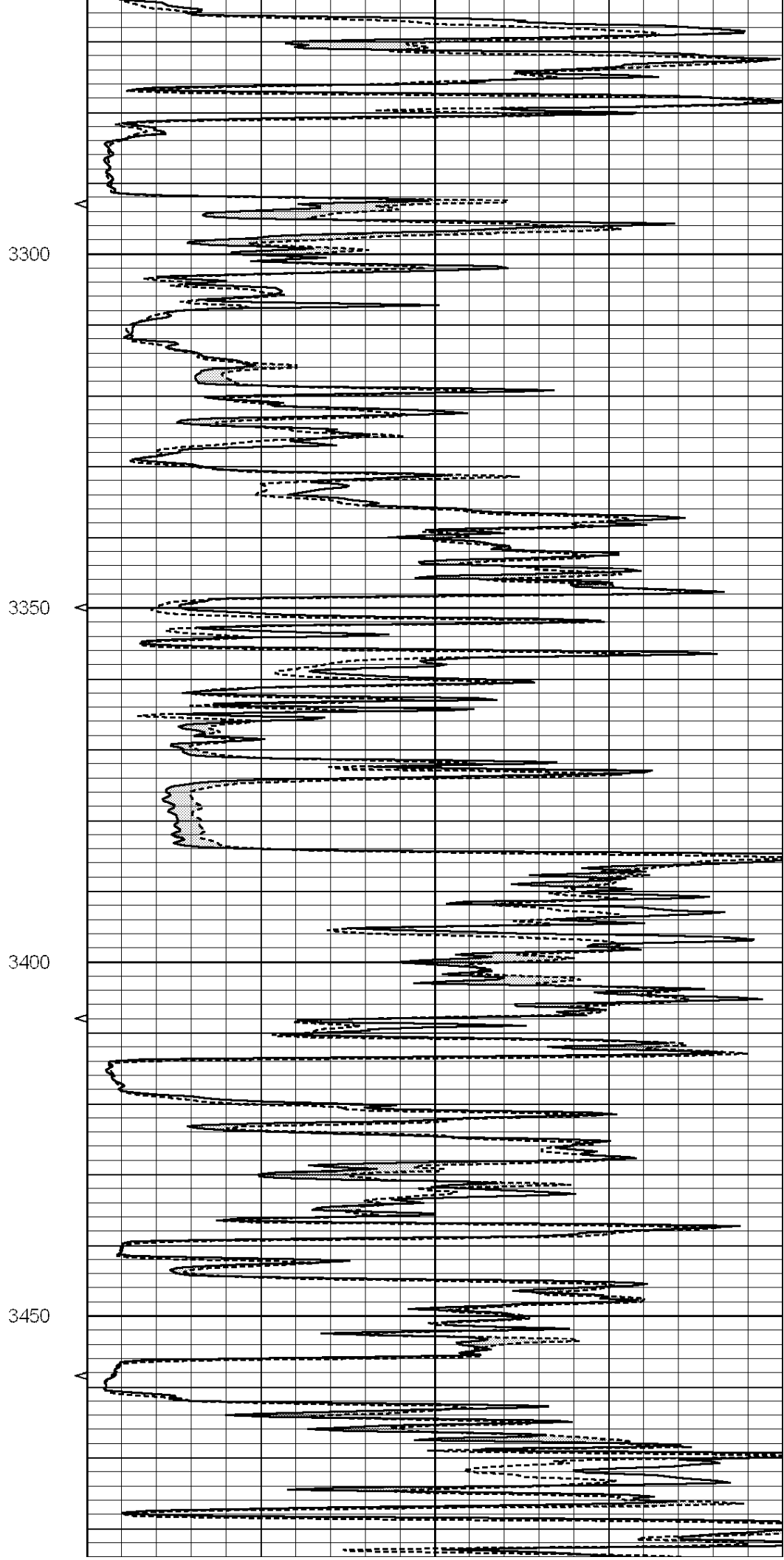
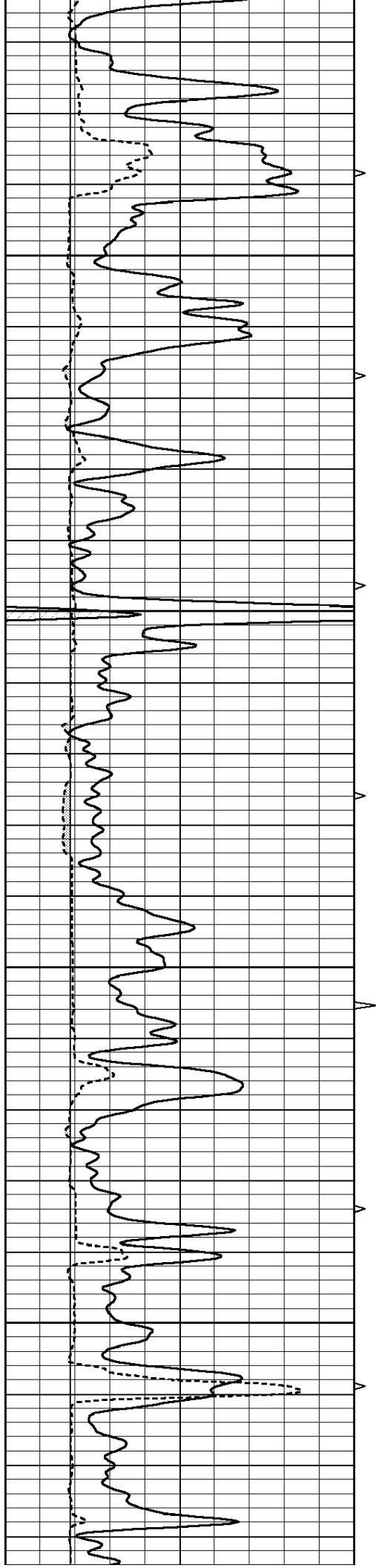
3100

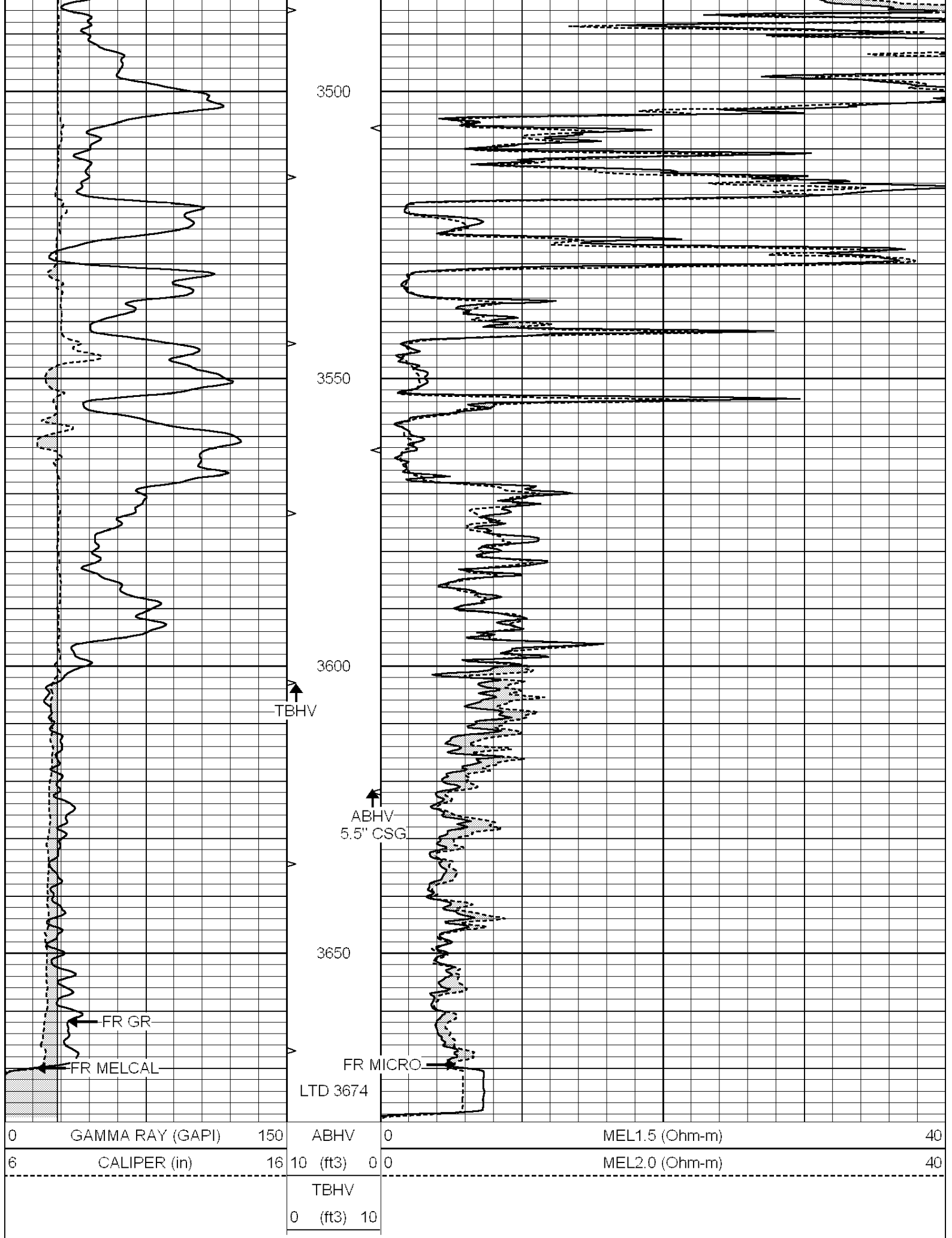
3150

3200

3250







0	GAMMA RAY (GAPI)	150	ABHV	0	MEL1.5 (Ohm-m)	40
6	CALIPER (in)	16	10 (ft3)	0 0	MEL2.0 (Ohm-m)	40
			TBHV			
			0 (ft3)	10		



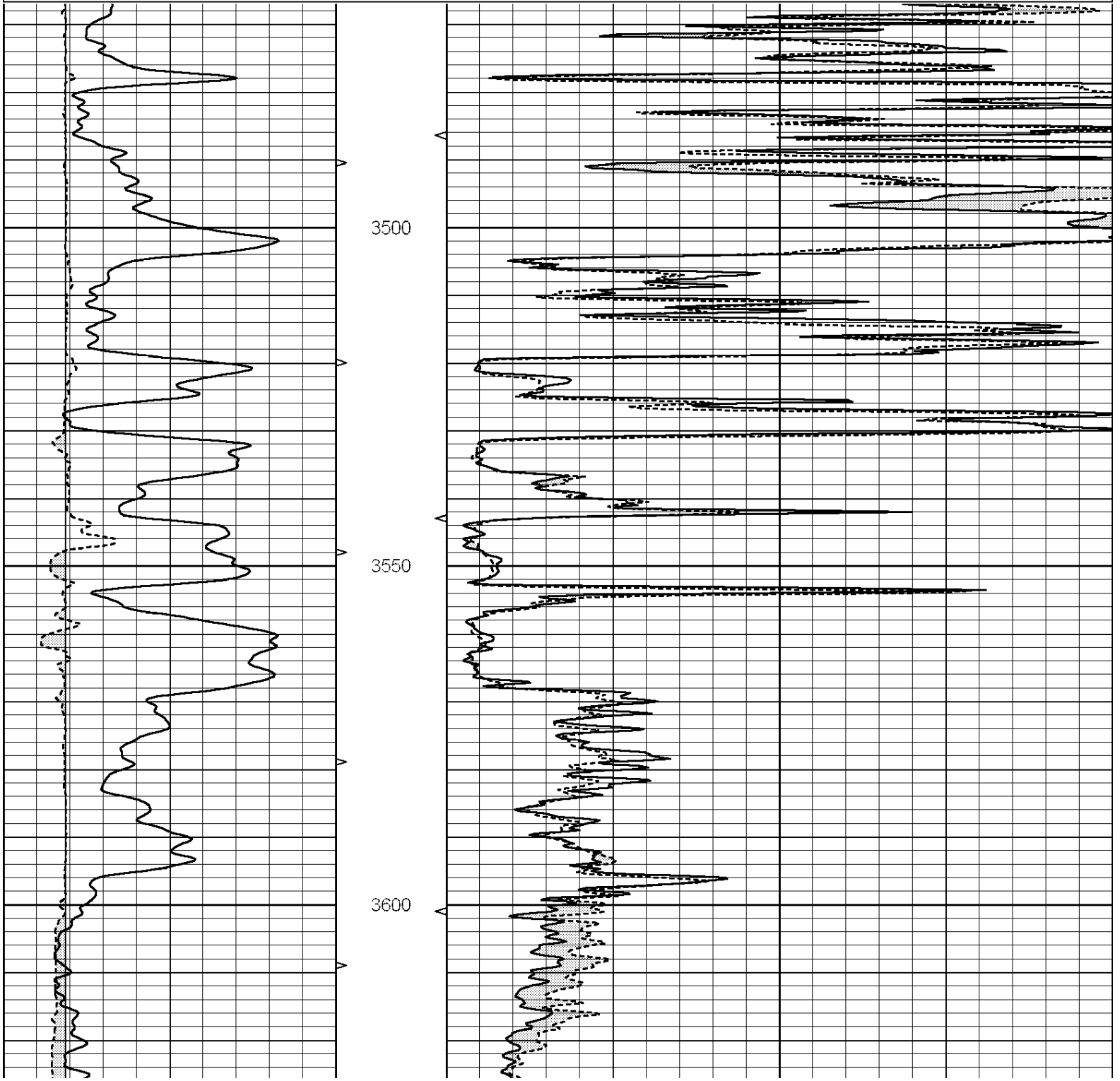
SUPERIOR

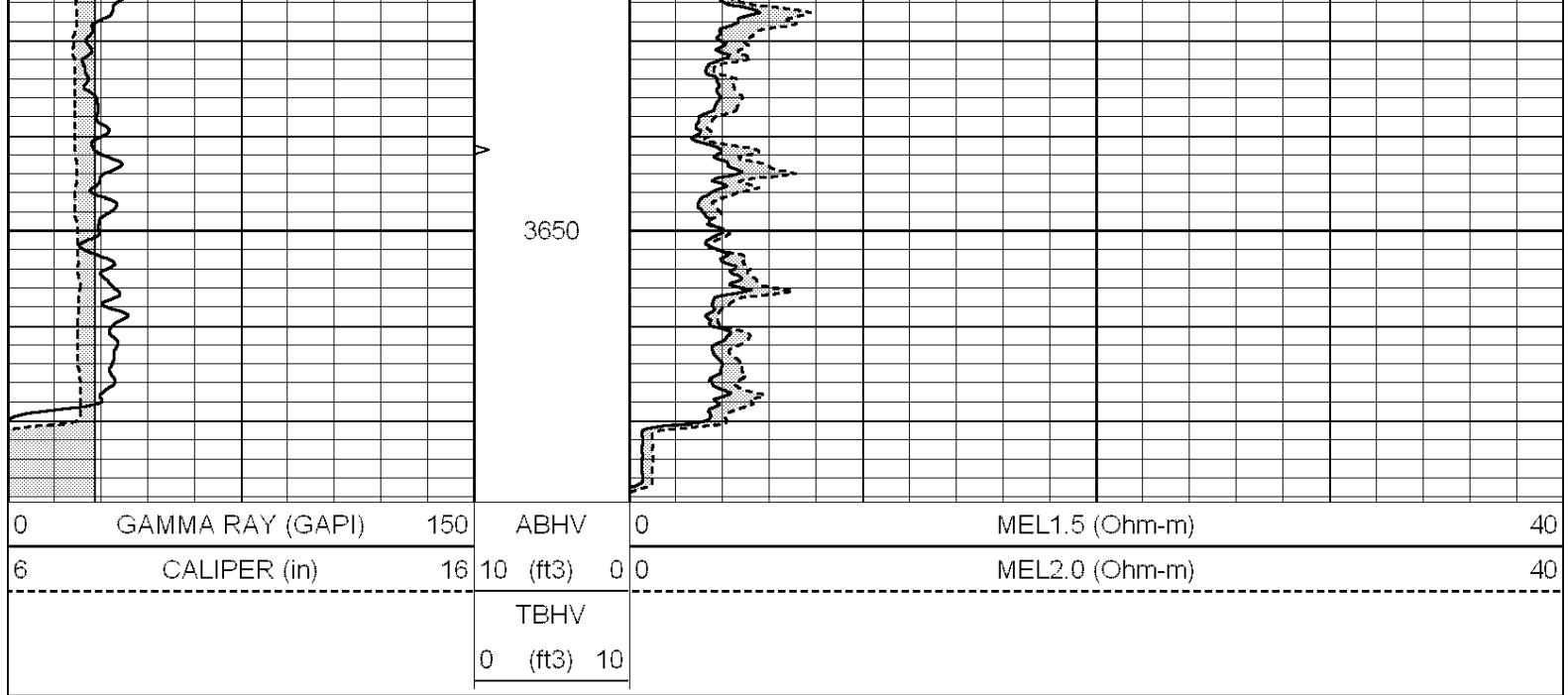
Hays,
Kansas

REPEAT SECTION

Database File: 009203ddn.db
 Dataset Pathname: pass4.1
 Presentation Format: _micro
 Dataset Creation: Tue May 22 10:50:45 2012 by Calc Open-Cased 090629
 Charted by: Depth in Feet scaled 1:240

0	GAMMA RAY (GAPI)	150	ABHV	0	MEL1.5 (Ohm-m)	40
6	CALIPER (in)	16	10 (ft3)	0 0	MEL2.0 (Ohm-m)	40
			TBHV			
			0 (ft3)	10		





Calibration Report

Database File: 009203ddn.db
 Dataset Pathname: pass5
 Dataset Creation: Tue May 22 10:53:00 2012 by Log Open-Cased 090629

MICRO Calibration Report

Serial Number: MICRO6
 Tool Model: PROBE
 Performed: Wed May 16 12:46:53 2012

Caliper Calibration: Gain=6.253 Offset=-1.318

References	Low Cal	High Cal
Readings	5.800	13.000
	1.178	2.330

1.5" Calibration: Gain=30.075 Offset=-0.200

References	Low Cal	High Cal
Readings	0.000	20.000
	0.004	1.196

2" Calibration: Gain=30.041 Offset=0.000

References	Low Cal	High Cal
Readings	0.000	20.000
	0.006	0.913

Gamma Ray Calibration Report

Serial Number: #8
 Tool Model: OPEN
 Performed: Mon Jun 13 16:56:43 2011

Calibrator Value: 150.0 GAPI

Background Reading:	0.0	cps
Calibrator Reading:	175.0	cps

Sensitivity: 0.8371 GAPI/cps