



SUPERIOR
Hays,
Kansas

**COMPENSATED
DENSITY/NEUTRON
LOG**

Company DREILING OIL, INC.
Well GRABBE "B" #2
Field SCHOENCHEN WEST
County ELLIS
State KANSAS

Company DREILING OIL, INC.
Well GRABBE "B" #2
Field SCHOENCHEN WEST
County ELLIS State KANSAS

Location: API # : 15-051-26304-0000
330' FNL & 330' FEL
NE - NE - NE/4
SEC 20 TWP 15S RGE 18W
Permanent Datum GROUND LEVEL Elevation 2006
Log Measured From KELLY BUSHING & A.G.L.
Drilling Measured From KELLY BUSHING
Other Services DIL/MEL
Elevation K.B. 2014
D.F. 2012
G.L. 2006

Date	5/22/12		
Run Number	ONE		
Depth Driller	3676		
Depth Logger	3674		
Bottom Logged Interval	3650		
Top Log Interval	2850		
Casing Driller	8 5/8" @ 1175		
Casing Logger	1175		
Bit Size	7 7/8		
Type Fluid in Hole	CHEMICAL MUD	CHLORIDES 8,000 PPM	
Density / Viscosity	8.9/54		
pH / Fluid Loss	10.0/10.4		
Source of Sample	FLOWLINE		
Rin @ Meas. Temp	0.40 @ 81F		
Rmf @ Meas. Temp	0.30 @ 81F		
Rmc @ Meas. Temp	0.48 @ 81F		
Source of Rmf / Rmc	MEASURED		
Rin @ BHT	0.29 @ 113F		
Time Circulation Stopped	2 HOURS		
Time Logger on Bottom			
Maximum Recorded Temperature	113F		
Equipment Number	680		
Location	HAYS, KS.		
Recorded By	JEFF GRONEMEG		
Witnessed By	ROGER FISHER		

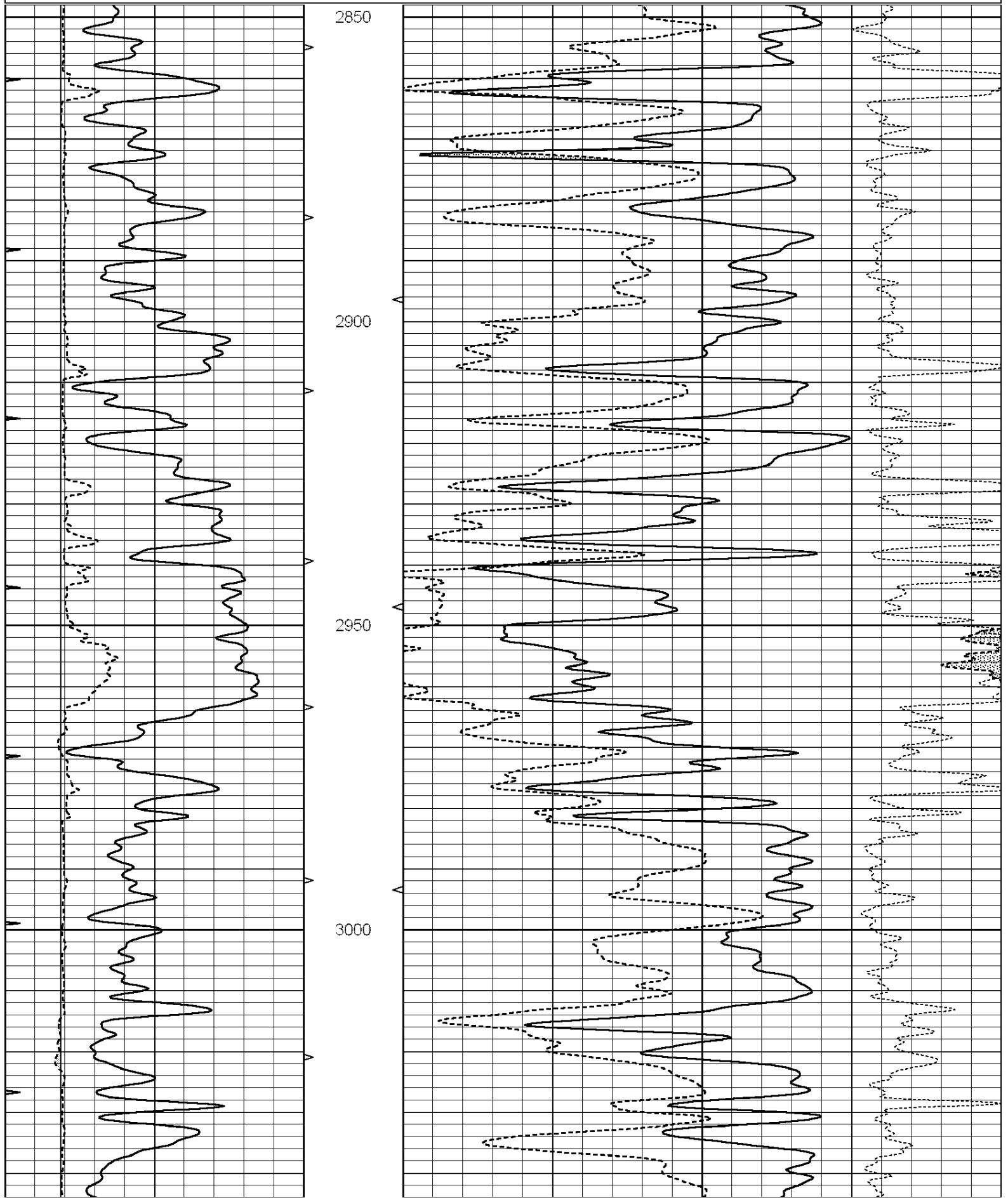
<<< Fold Here >>>

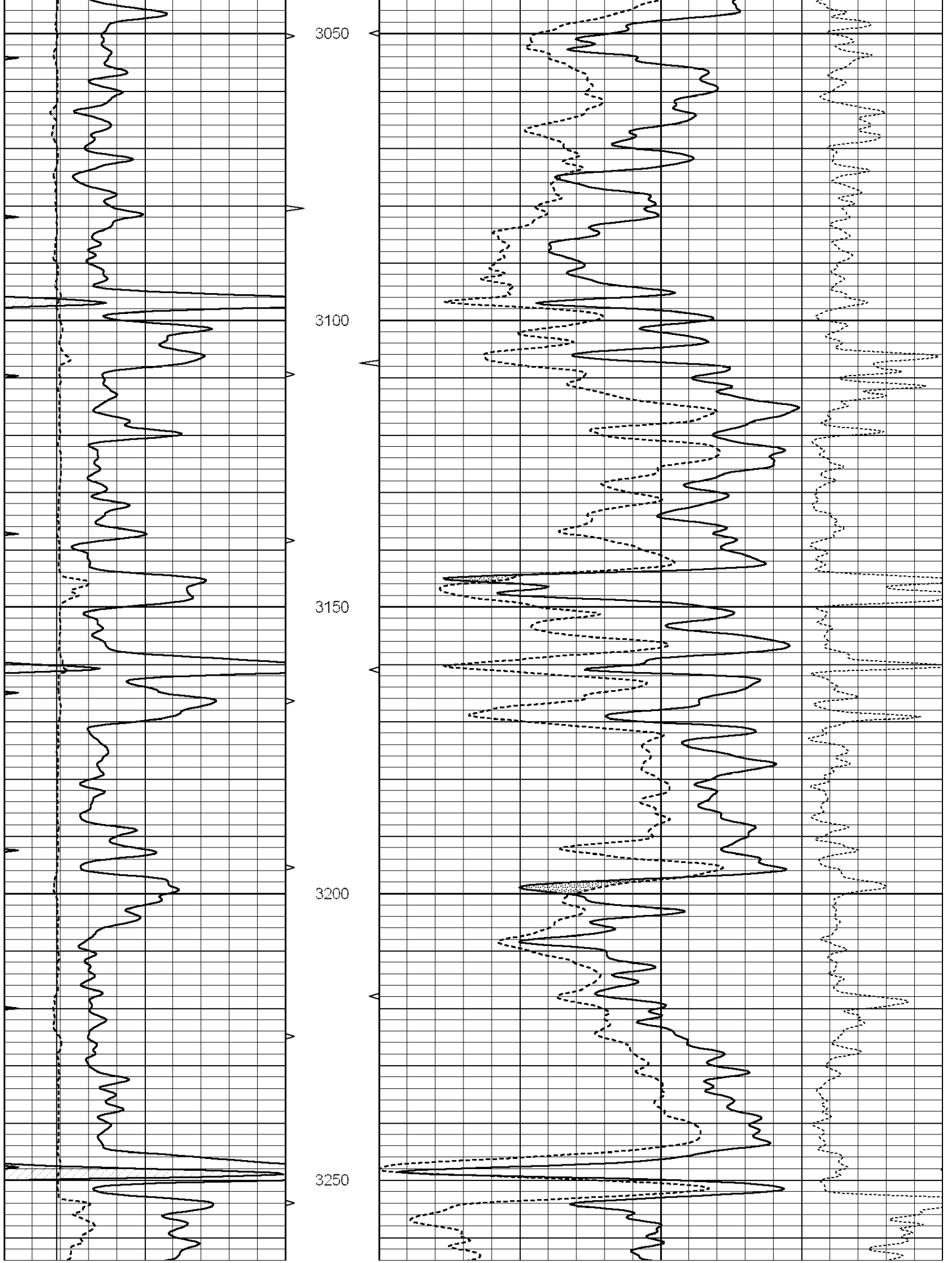
All interpretations are opinions based on inferences from electrical or other measurements and we cannot and do not guarantee the accuracy or correctness of any interpretation, and we shall not, except in the case of gross or willful negligence on our part, be liable or responsible for any loss, costs, damages, or expenses incurred or sustained by anyone resulting from any interpretation made by any of our officers, agents or employees. These interpretations are also subject to our general terms and conditions set out in our current Price Schedule.

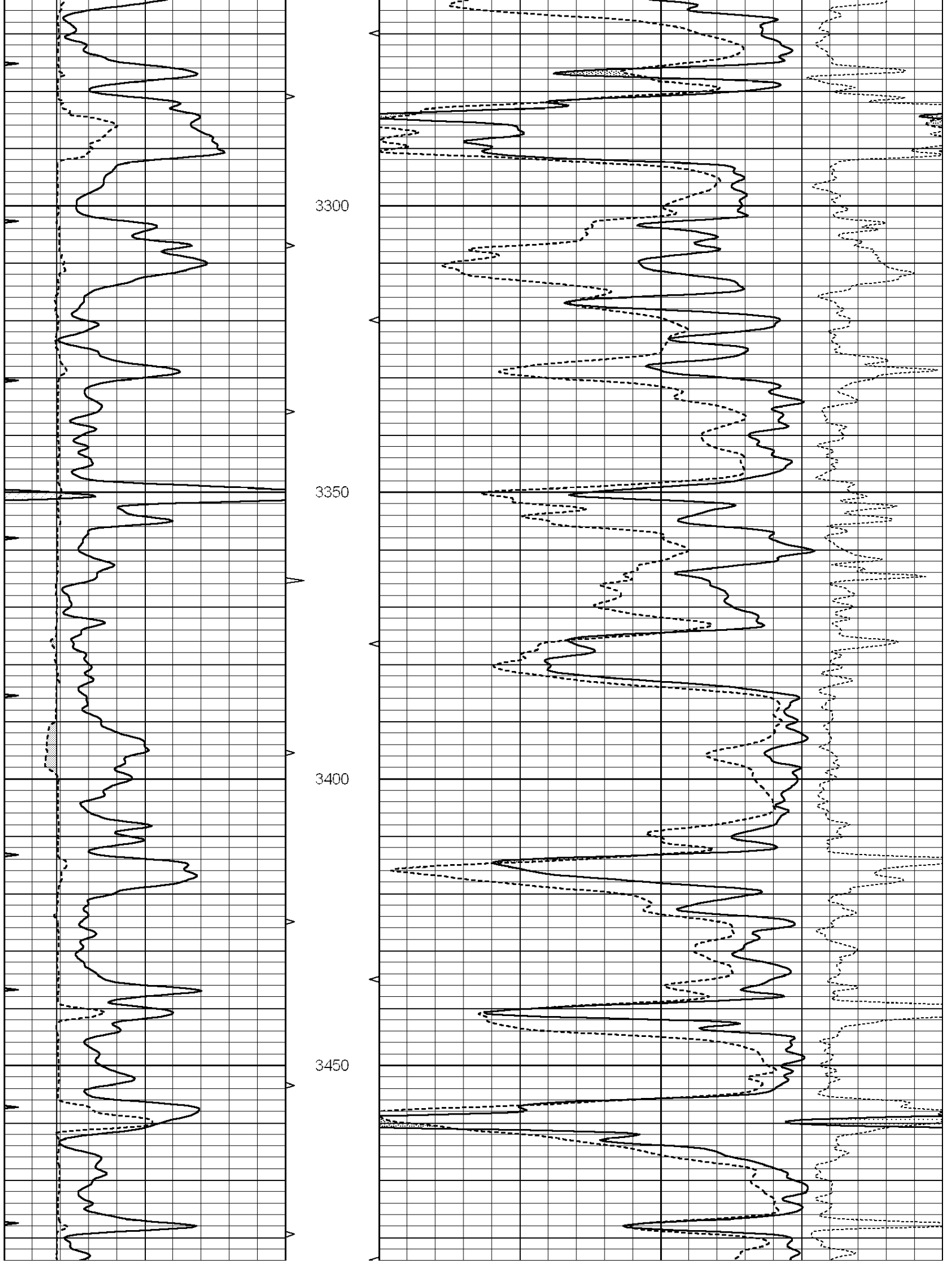
Comments

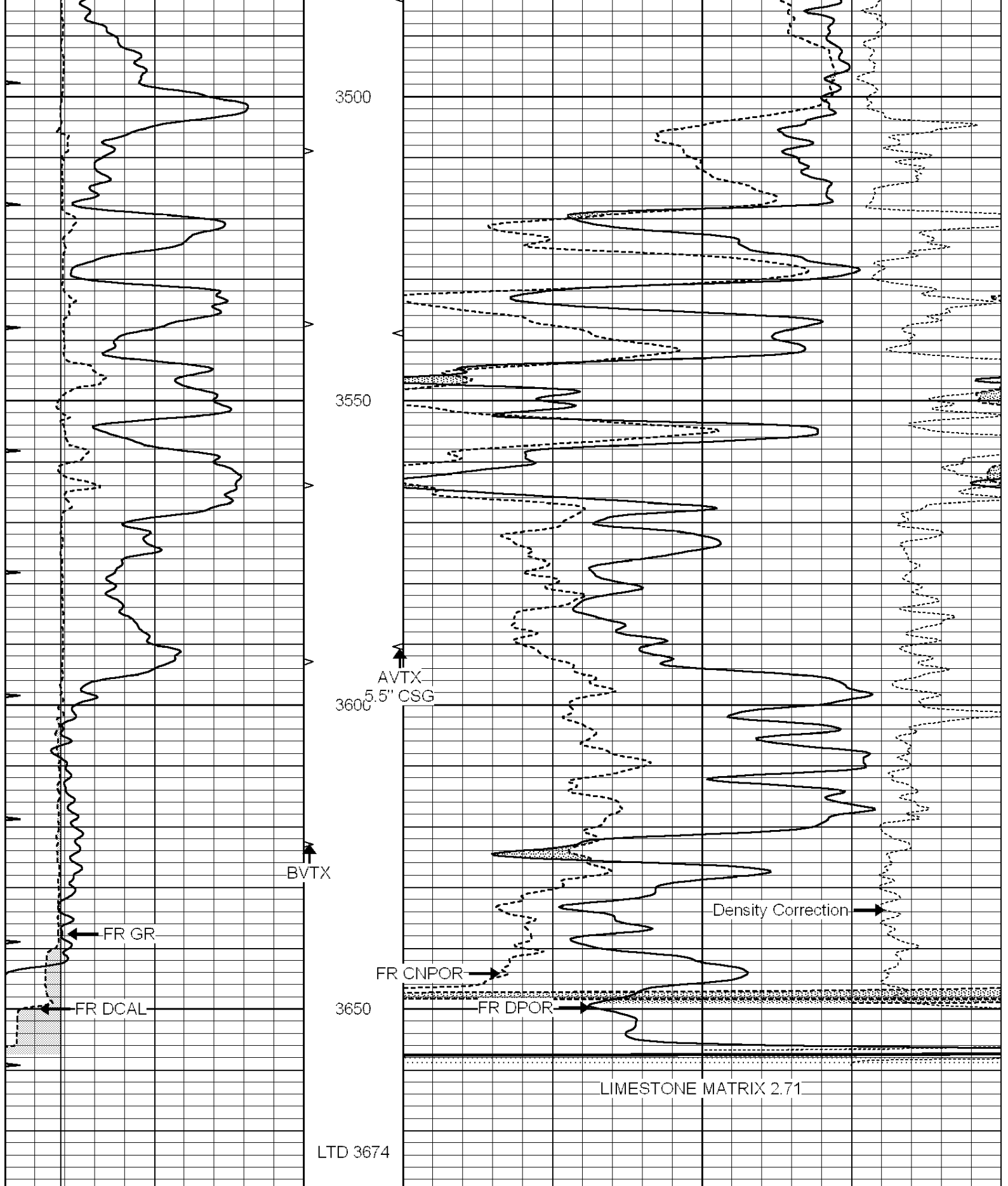
THANK YOU FOR USING SUPERIOR WELL SERVICE (785) 628-6395
DIRECTIONS
HAYS, KS - SOUTH TO CHETOLAH GOLD RD (HAYS MACK)
2 MILES WEST TO T IN ROAD - WEST INTO

0	GAMMA RAY (GAPI)	150	AVTX	30	COMPENSATED DENSITY (pu)	-10
6	CALIPER (in)	16	10 (ft3)	0 30	COMPENSATED NEUTRON (pu)	-10
0	MINMK	20	BVTX		-0.25 CORRECTION (g/cc)	0.25
			0 (ft3)	10		









0	GAMMA RAY (GAPI)	150	AVTX	30	COMPENSATED DENSITY (pu)	-10	
6	CALIPER (in)	16	10 (ft3)	0	COMPENSATED NEUTRON (pu)	-10	
0	MINMK	20	BVTX		-0.25	CORRECTION (g/cc)	0.25
			0 (ft3)	10			



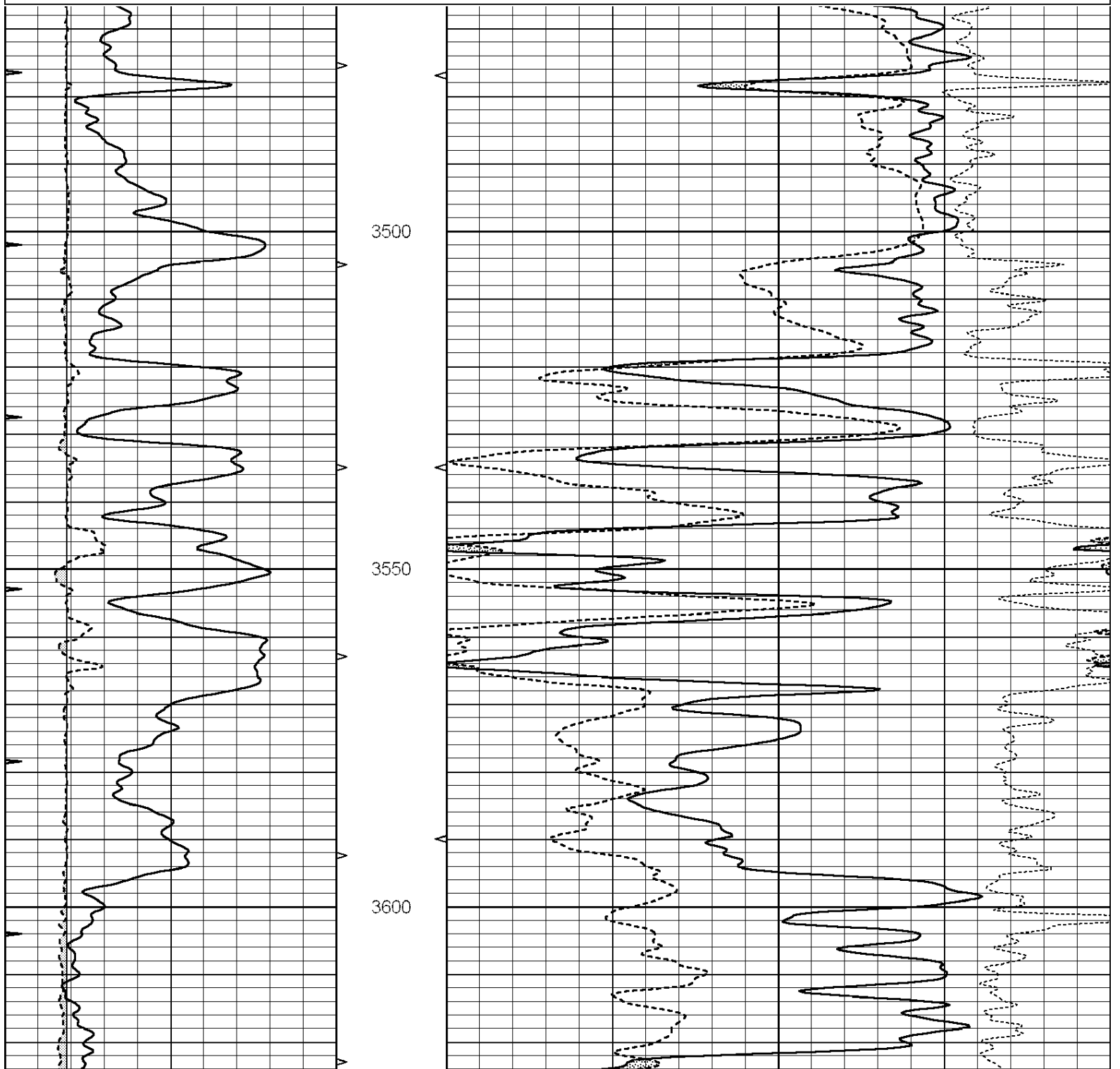
SUPERIOR

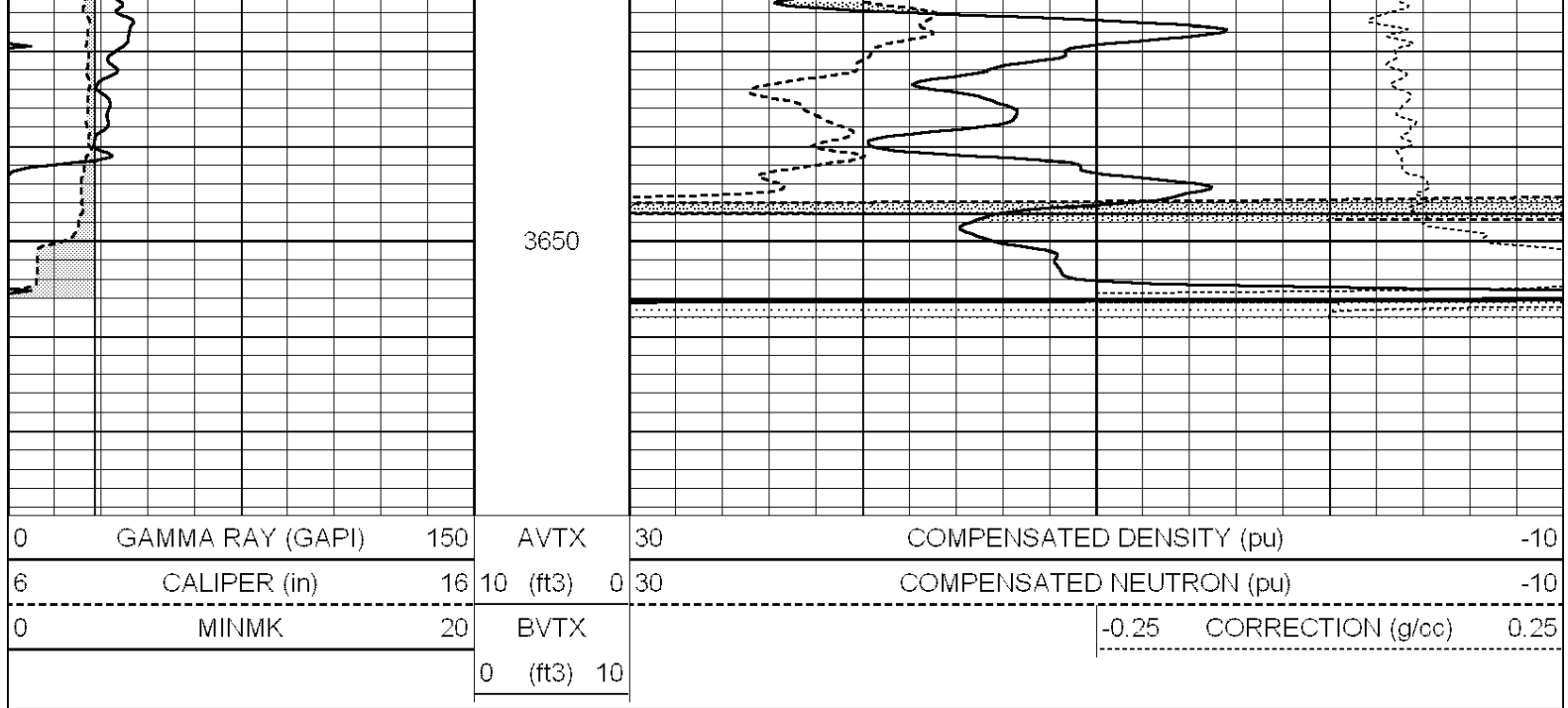
Hays,
Kansas

REPEAT SECTION

Database File: 009203ddn.db
 Dataset Pathname: pass2.3
 Presentation Format: _den_neu
 Dataset Creation: Tue May 22 09:47:57 2012 by Calc Open-Cased 090629
 Charted by: Depth in Feet scaled 1:240

0	GAMMA RAY (GAPI)	150	AVTX	30	COMPENSATED DENSITY (pu)	-10
6	CALIPER (in)	16	10 (ft3)	0 30	COMPENSATED NEUTRON (pu)	-10
0	MINMK	20	BVTX		-0.25 CORRECTION (g/cc)	0.25
			0 (ft3)	10		





Calibration Report

Database File: 009203ddn.db
 Dataset Pathname: pass3.1
 Dataset Creation: Tue May 22 09:42:02 2012 by Calc Open-Cased 090629

Dual Induction Calibration Report

Serial-Model: PROBE8-DILG
 Surface Cal Performed: Fri Aug 01 06:33:19 2008
 Downhole Cal Performed: Mon Jul 28 11:08:27 2008
 After Survey Verification Performed: Mon Jul 28 11:08:27 2008

Surface Calibration

Loop:	Readings				References			Results	
	Air	Loop			Air	Loop		m	b
Deep	0.015	0.648	V	0.000	400.000	mmho/m	632.616	-9.730	
Medium	0.029	0.796	V	0.000	464.000	mmho/m	605.049	-17.680	
Internal:	Zero	Cal		Zero	Cal		m	b	
Deep	0.017	0.657	V	0.000	400.000	mmho/m	625.153	-10.619	
Medium	0.016	0.757	V	0.000	464.000	mmho/m	625.992	-9.739	

Downhole Calibration

	Readings				References			Results	
	Zero	Cal			Zero	Cal		m'	b'
Deep	0.000	0.000	mmho/m	2.011	405.777	mmho/m	1.000	0.000	
Medium	0.000	0.000	mmho/m	7.590	503.393	mmho/m	1.000	0.000	
LL3		7.500	V		1500.000	Ohm-m			
		0.000	V		20.000	Ohm-m			
		-7.200	V		3800.000	mmho-m			

After Survey Verification

	Readings				Targets			Results	
	Zero	Cal			Zero	Cal		m'	b'
Deep	0.000	0.000	mmho/m	0.000	0.000	mmho/m	0.000	0.000	
Medium	0.000	0.000	mmho/m	0.000	0.000	mmho/m	0.000	0.000	
LL3		1.000	Ohm-m		1.000	Ohm-m			

0.000 Ohm-m
1.000 mmho-m

0.000 Ohm-m
1.000 mmho-m

Compensated Density Calibration Report

Serial-Model: GEAR4-GEARHART
Source / Verifier: 143 / 143
Master Calibration Performed: Mon Mar 19 19:07:19 2012

Master Calibration

	Density		Far Detector	Near Detector	
Magnesium	1.710	g/cc	1015.91	497.51	cps
Aluminum	2.600	g/cc	227.67	350.20	cps
Spine Angle = 76.79			Density/Spine Ratio = 0.579		
	Size		Reading		
Small Ring	8.00	in	2.25	V	
Large Ring	14.00	in	4.37	V	

Compensated Neutron Calibration Report

Serial Number: 6I
Tool Model: G

CALIBRATION

Detector	Readings		Target		Normalization
Short Space	1.00	cps	1.00	cps	1.0000
Long Space	1.00	cps	1.00	cps	1.0000

Gamma Ray Calibration Report

Serial Number: #8
Tool Model: OPEN
Performed: Mon Jun 13 16:56:43 2011

Calibrator Value: 150.0 GAPI

Background Reading: 0.0 cps
Calibrator Reading: 175.0 cps

Sensitivity: 0.8371 GAPI/cps