



DIGITAL LOG (785) 625-3858

Dual Induction Log

15-077-21,828-00-00

API No.

Company MTM Petroleum, Inc.
 Well Maloney "W" No. 2
 Field Washbon
 County Harper State Kansas

Location W2 SW SE
 660' FSL & 2310' FEL

Sec: 6 Twp: 31 S Rge: 7 W

Permanent Datum Ground Level Elevation 1641
 Log Measured From Kelly Bushing 10 Ft. Above Perm. Datum
 Drilling Measured From Kelly Bushing

Other Services
 CNL/CDL
 Elevation
 K.B. 1651
 D.F.
 G.L. 1641

Date	3/21/2012	
Run Number	One	
Depth Driller	4500	
Depth Logger	4504	
Bottom Logged Interval	4503	
Top Log Interval	3600	
Casing Driller	8.625 @ 223	
Casing Logger	223	
Bit Size	7.875	
Type Fluid in Hole	Chemical	
Salinity, ppm CL	3000	
Density / Viscosity	9.3 44	
pH / Fluid Loss	11.0 9.6	
Source of Sample	Flowline	
Rm @ Meas. Temp	1.22 @ 52	
Rmf @ Meas. Temp	.92 @ 52	
Rmc @ Meas. Temp	1.65 @ 52	
Source of Rmf / Rmc	Charts	
Rm @ BHT	.52 @ 121	
Operating Rig Time	3 Hours	
Max Rec. Temp. F	121	
Equipment Number	17	
Location	Hays	
Recorded By	D. Martin	
Witnessed By	Marvin Miller	

<<< Fold Here >>>

All interpretations are opinions based on inferences from electrical or other measurements and we cannot and do not guarantee the accuracy or correctness of any interpretation, and we shall not, except in the case of gross or willful negligence on our part, be liable or responsible for any loss, costs, damages, or expenses incurred or sustained by anyone resulting from any interpretation made by any of our officers, agents or employees. These interpretations are also subject to our general terms and conditions set out in our current Price Schedule.

Comments

Thank you for using Log-Tech, Inc.
 (785) 625-3858

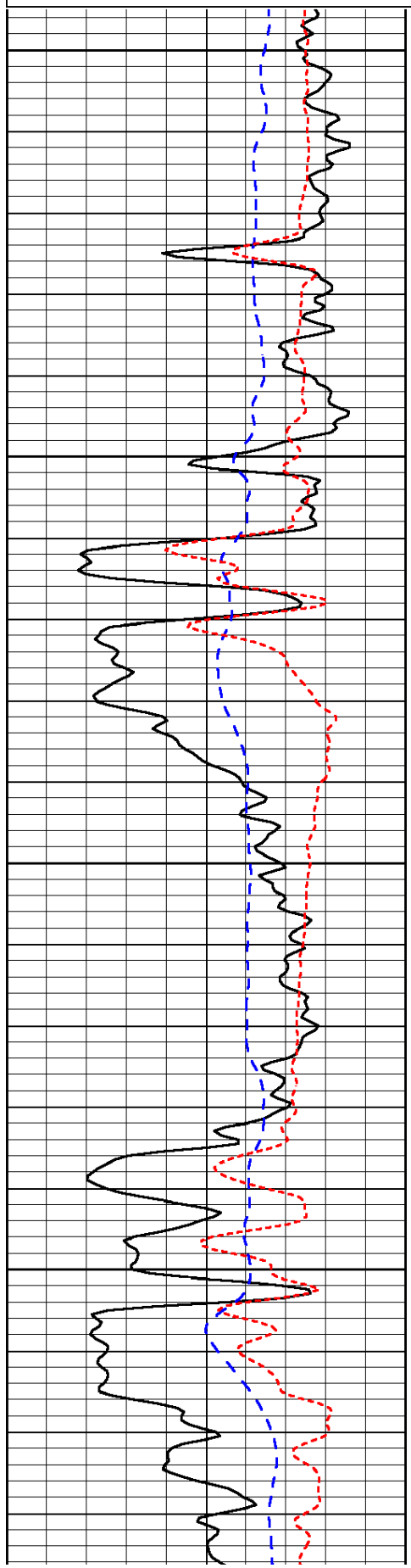
Kingman, KS
 S to County Line on Hwy 14,
 1 S to Ridge Rd., 2 1/2 W, N Into

Database File: c:\warrior\data\mtm_maloney m no. 2\mtmhd.db
 Dataset Pathname: DIL\mtmstk
 Presentation Format: dil
 Dataset Creation: Wed Mar 21 05:13:58 2012
 Charted by: Depth in Feet scaled 1:240

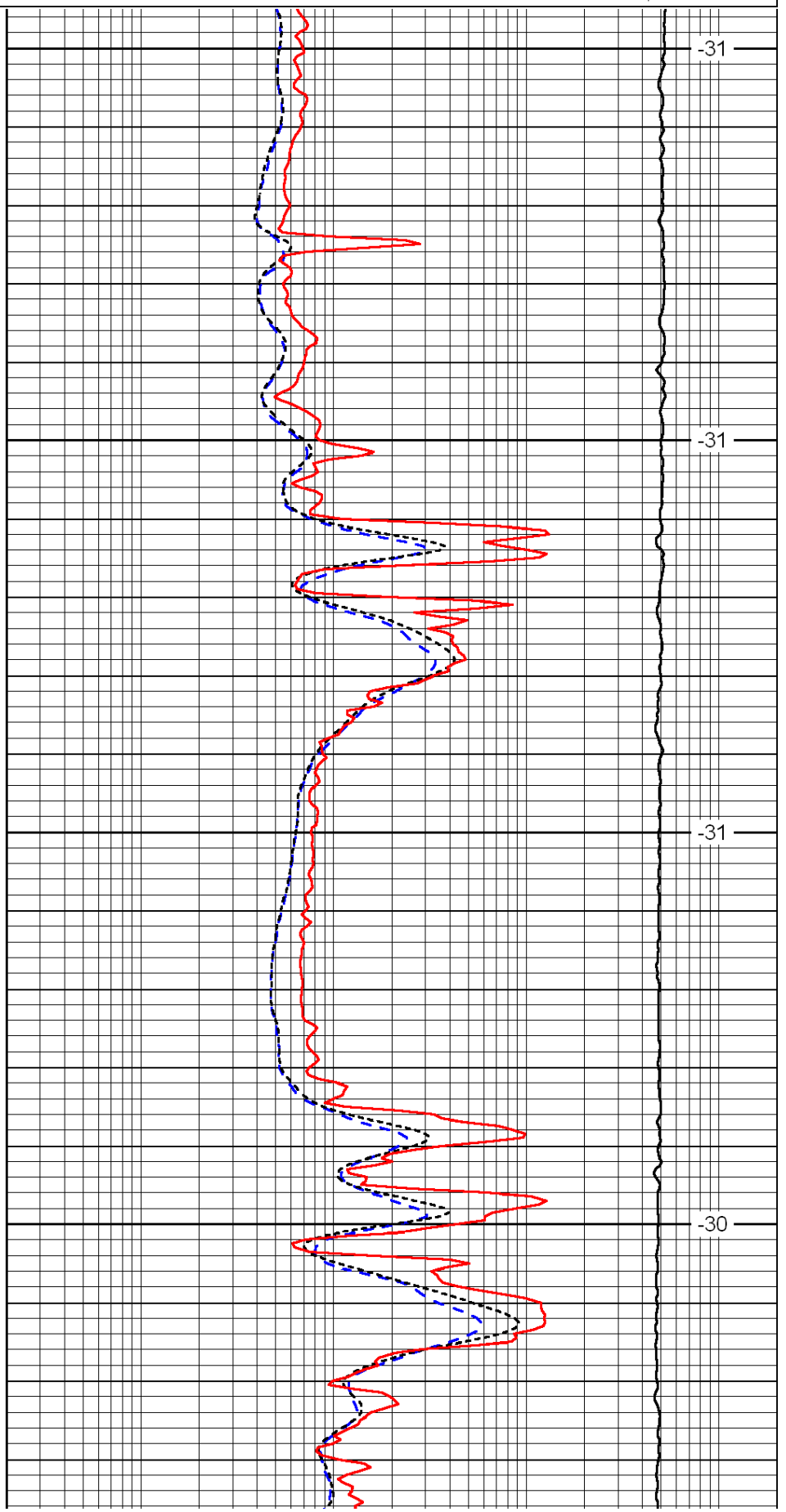
0	Gamma Ray	150
-200	SP (mV)	0
-160	Rxo / Rt	40

0.2	Deep Resistivity	2000
0.2	Medium Resistivity	2000
0.2	Shallow Resistivity	2000
15000	Line Tension	0

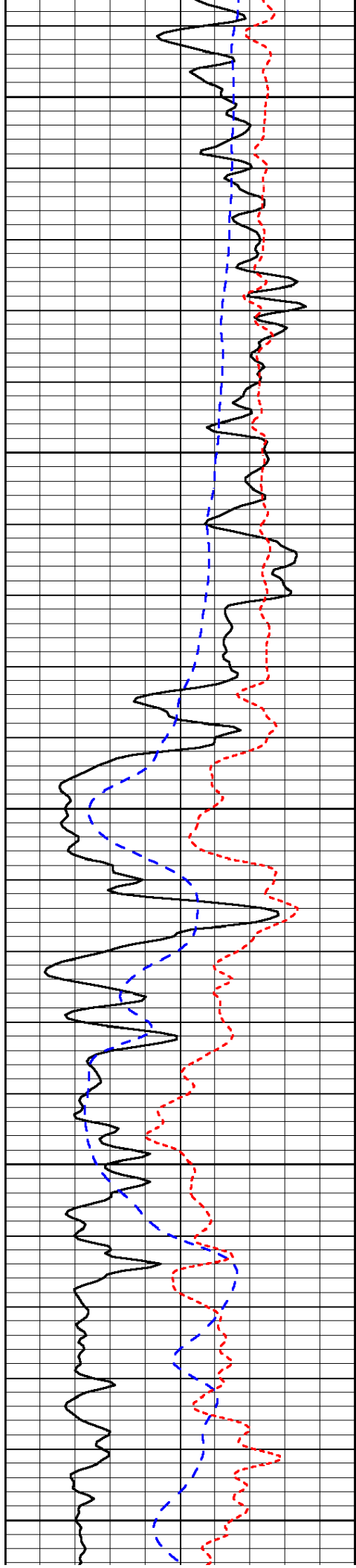
LSPD



3600
3650
3700
3750



-31
-31
-31
-30



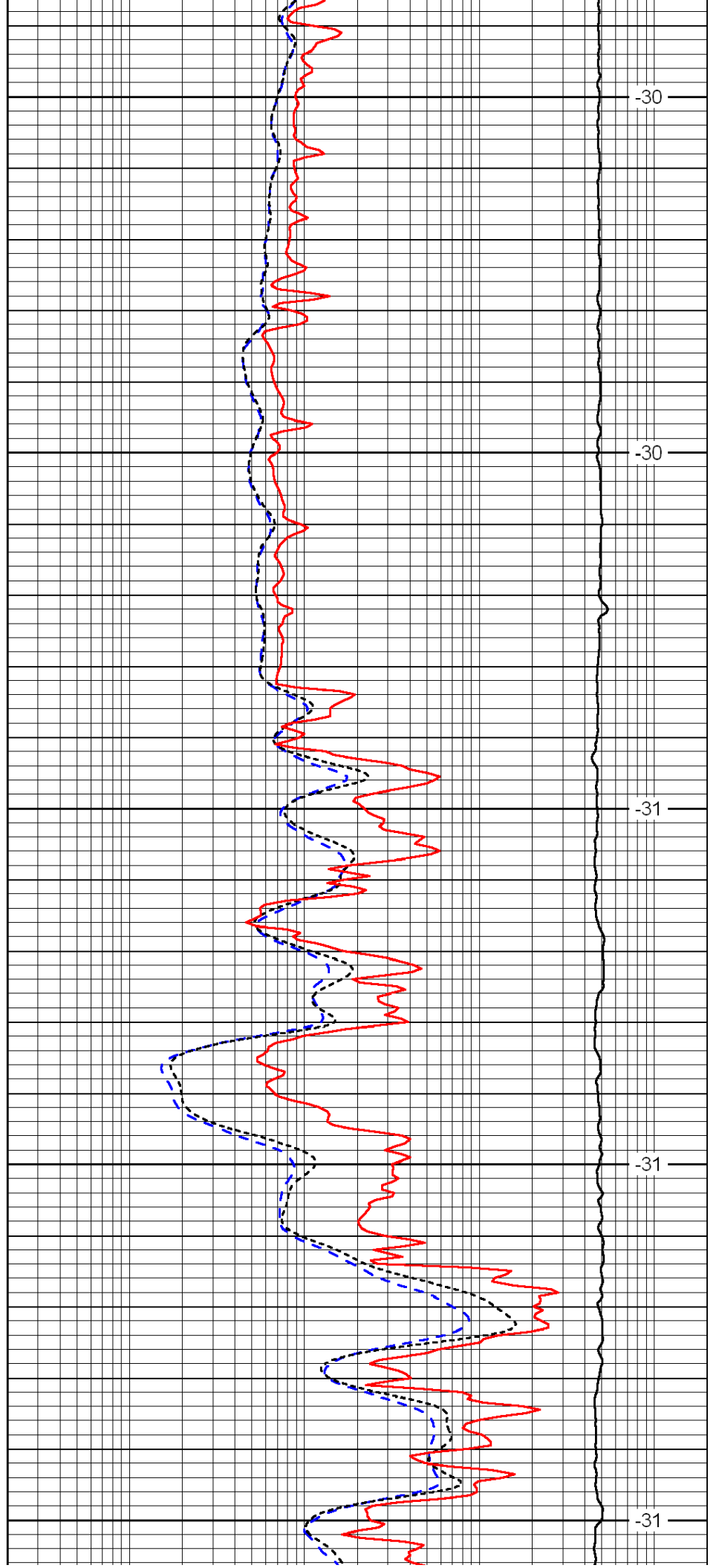
3800

3850

3900

3950

4000



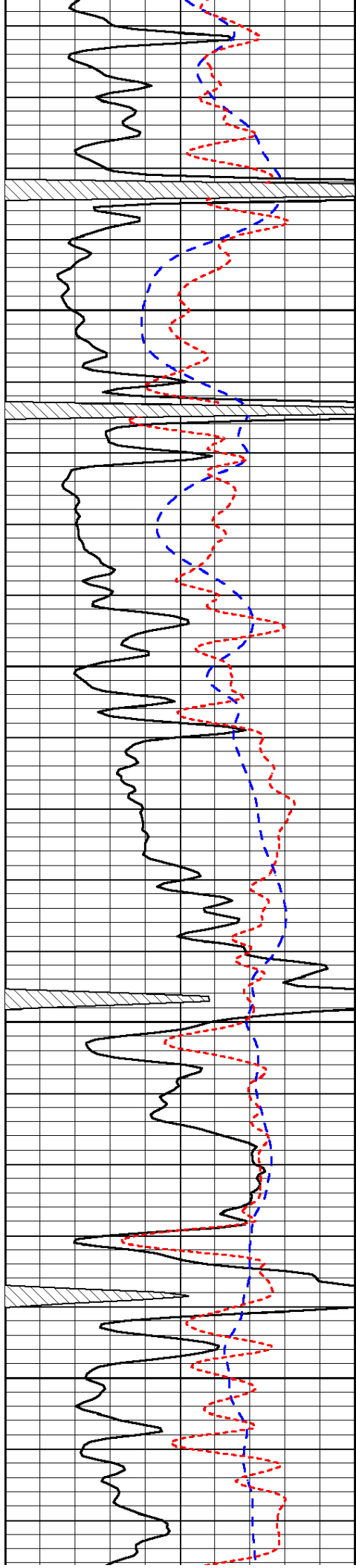
-30

-30

-31

-31

-31

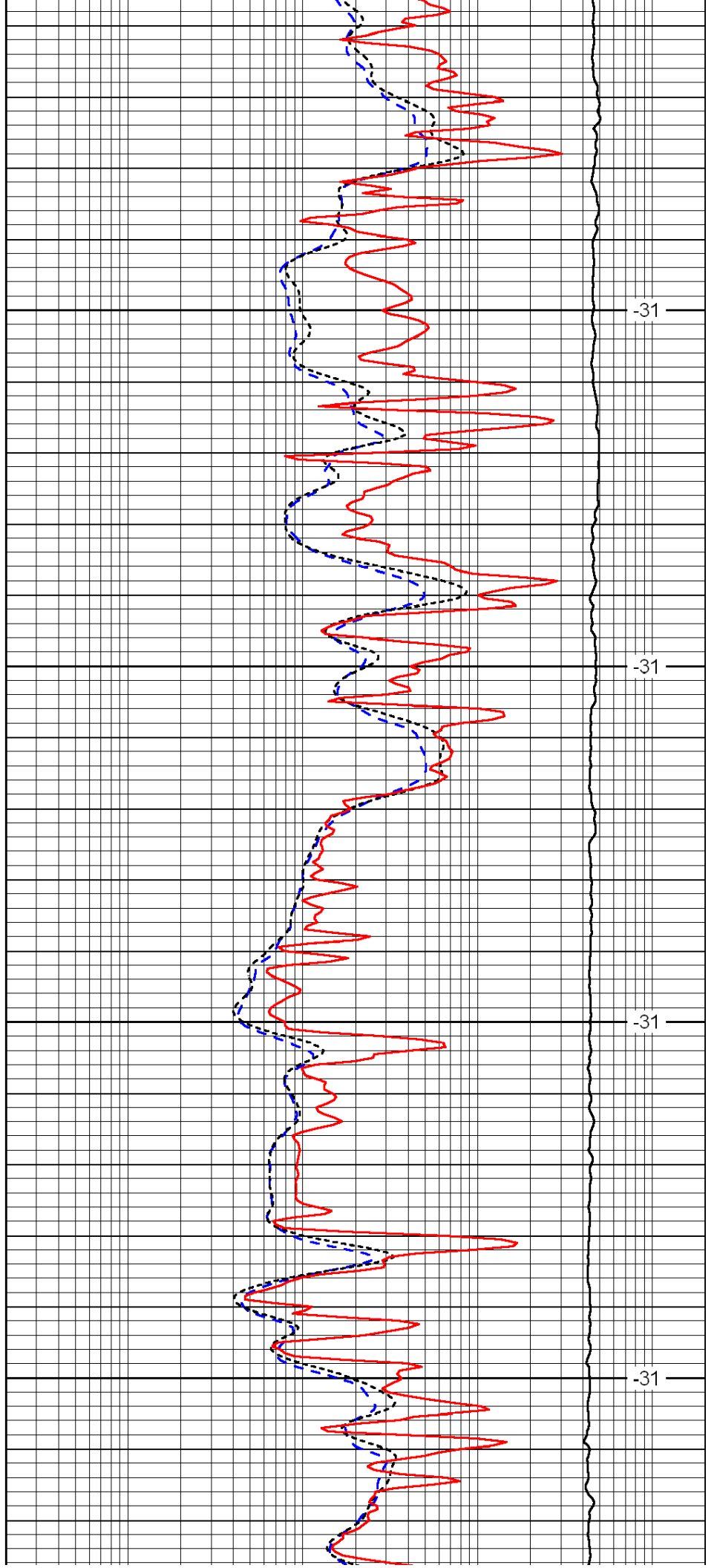


4050

4100

4150

4200

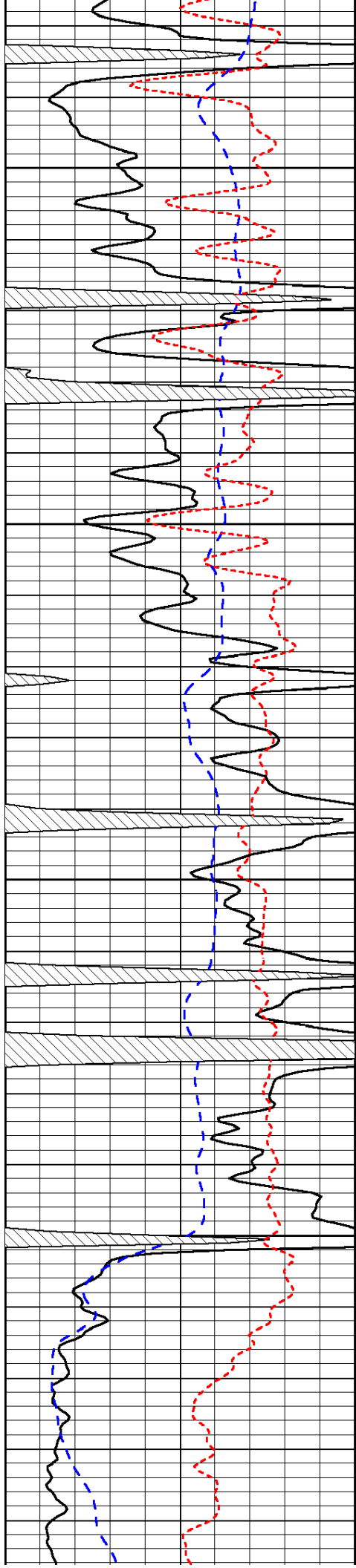


-31

-31

-31

-31

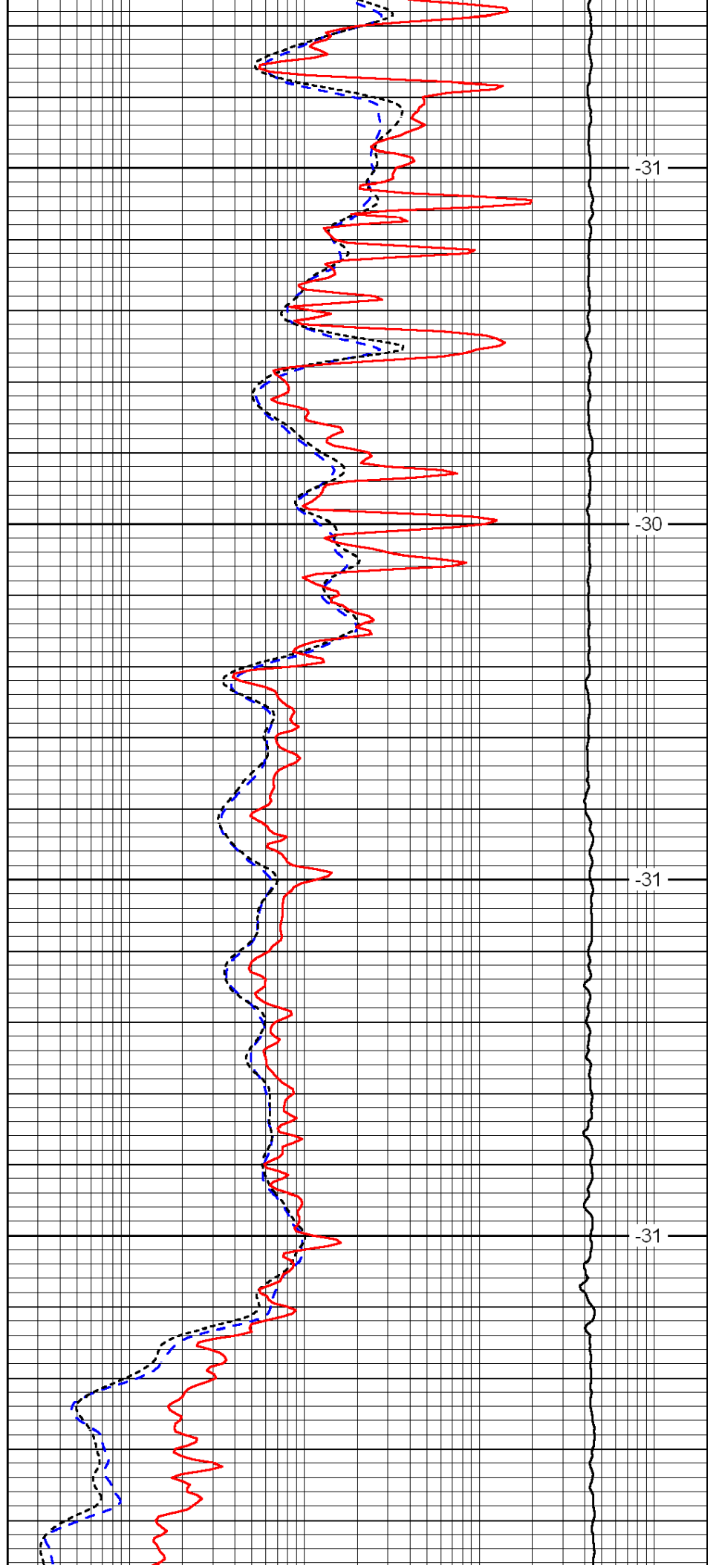


4250

4300

4350

4400

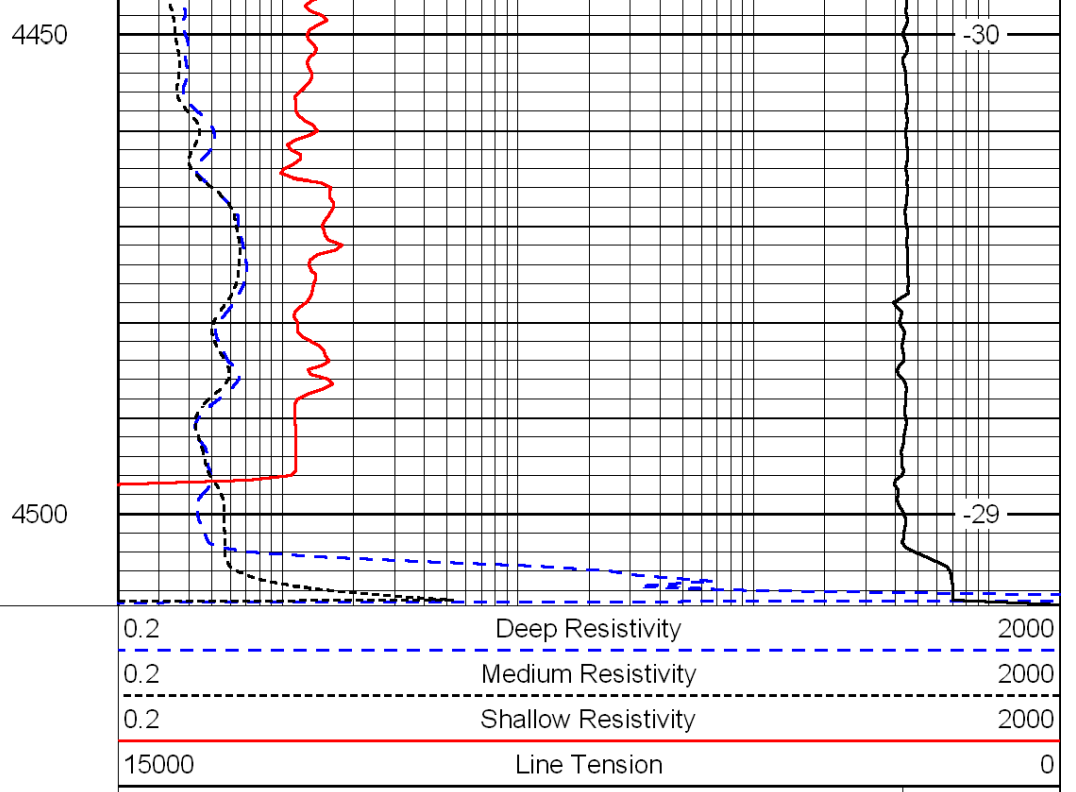
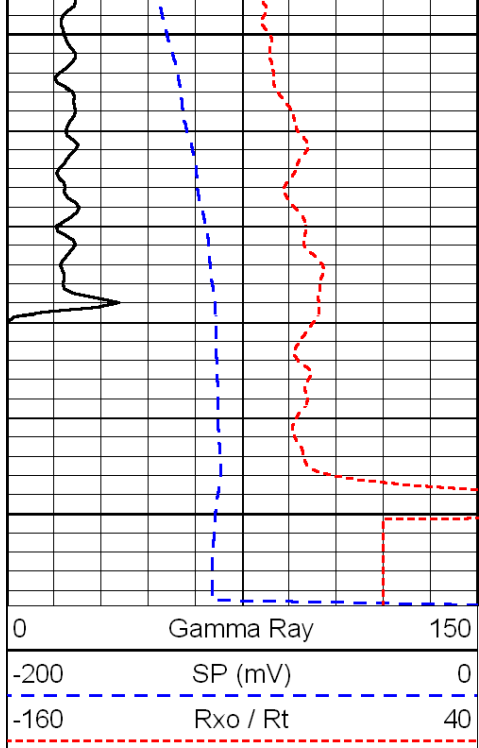


-31

-30

-31

-31



LSPD