



DIGITAL LOG (785) 625-3858

Dual Compensated Porosity Log

15-077-21,828-00-00

API No. 15-077-21,828-00-00

Company MTM Petroleum, Inc.
 Well Maloney "W" No. 2
 Field Washbon
 County Harper State Kansas

Location W2 SW SE
 660' FSL & 2310' FEL

Sec: 6 Twp: 31 S Rge: 7 W

Other Services DIL

Permanent Datum Ground Level Elevation 1641
 Log Measured From Kelly Bushing 10 Ft. Above Perm. Datum
 Drilling Measured From Kelly Bushing

Elevation
 K.B. 1651
 D.F. 1641
 G.L. 1641

Date	3/21/2012	
Run Number	One	
Type Log	CNL / CDL	
Depth Driller	4500	
Depth Logger	4504	
Bottom Logged Interval	4483	
Top Logged Interval	3600	
Type Fluid In Hole	Chemical	
Salinity, PPM CL	3000	
Density Level	9.3	
Level	Full	
Max. Rec. Temp. F	121	
Operating Rig Time	3 Hours	
Equipment -- Location	17 Days	
Recorded By	D. Martin	
Witnessed By	Marvin Miller	

Borehole Record				Casing Record			
Run No.	Bit	From	To	Size	Wgt.	From	To
1	12.25	00	223	8.625	24#	00	223
2	7.875	223	4500				

<<< Fold Here >>>

All interpretations are opinions based on inferences from electrical or other measurements and we cannot and do not guarantee the accuracy or correctness of any interpretation, and we shall not, except in the case of gross or willful negligence on our part, be liable or responsible for any loss, costs, damages, or expenses incurred or sustained by anyone resulting from any interpretation made by any of our officers, agents or employees. These interpretations are also subject to our general terms and conditions set out in our current Price Schedule.

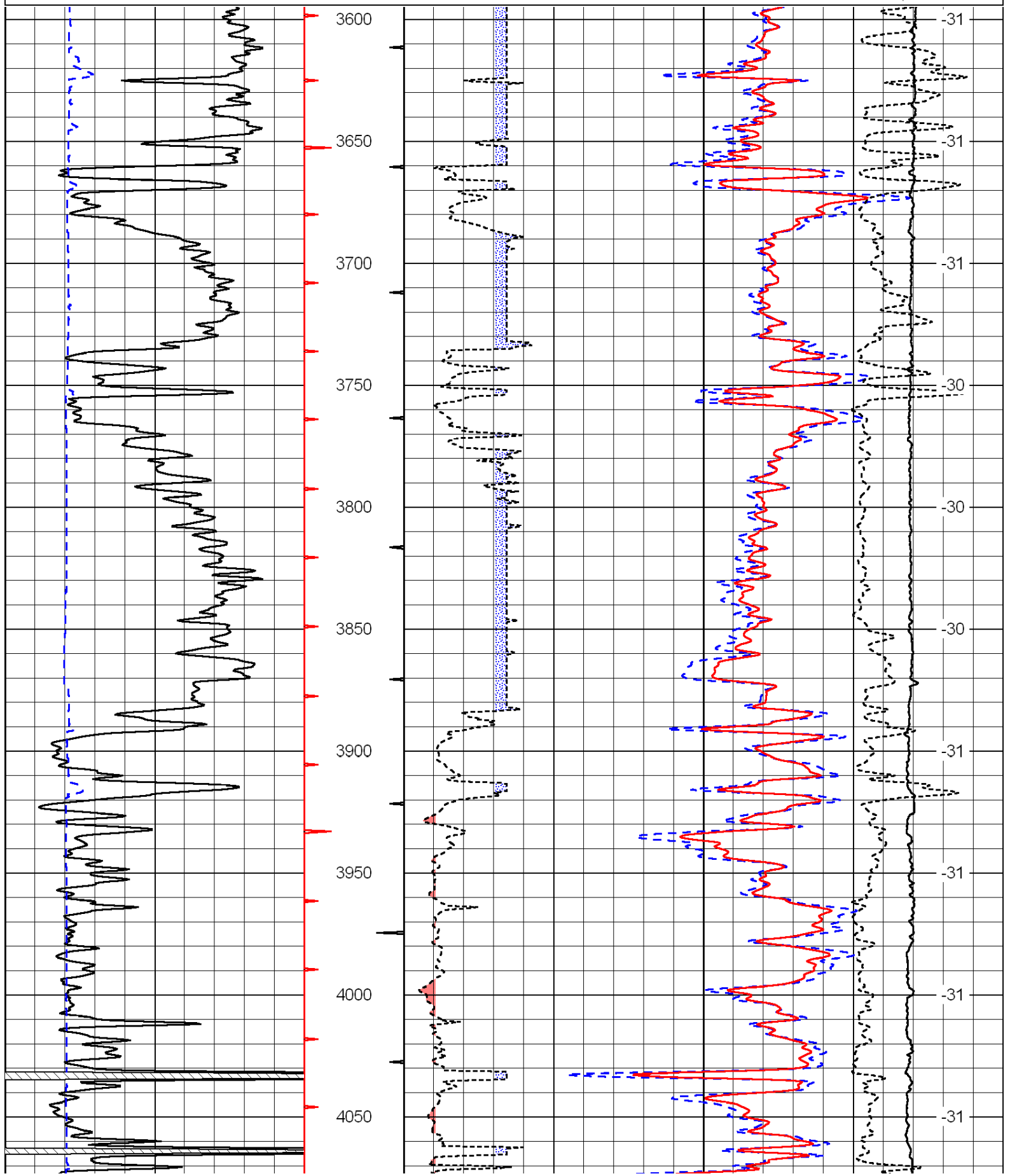
Comments

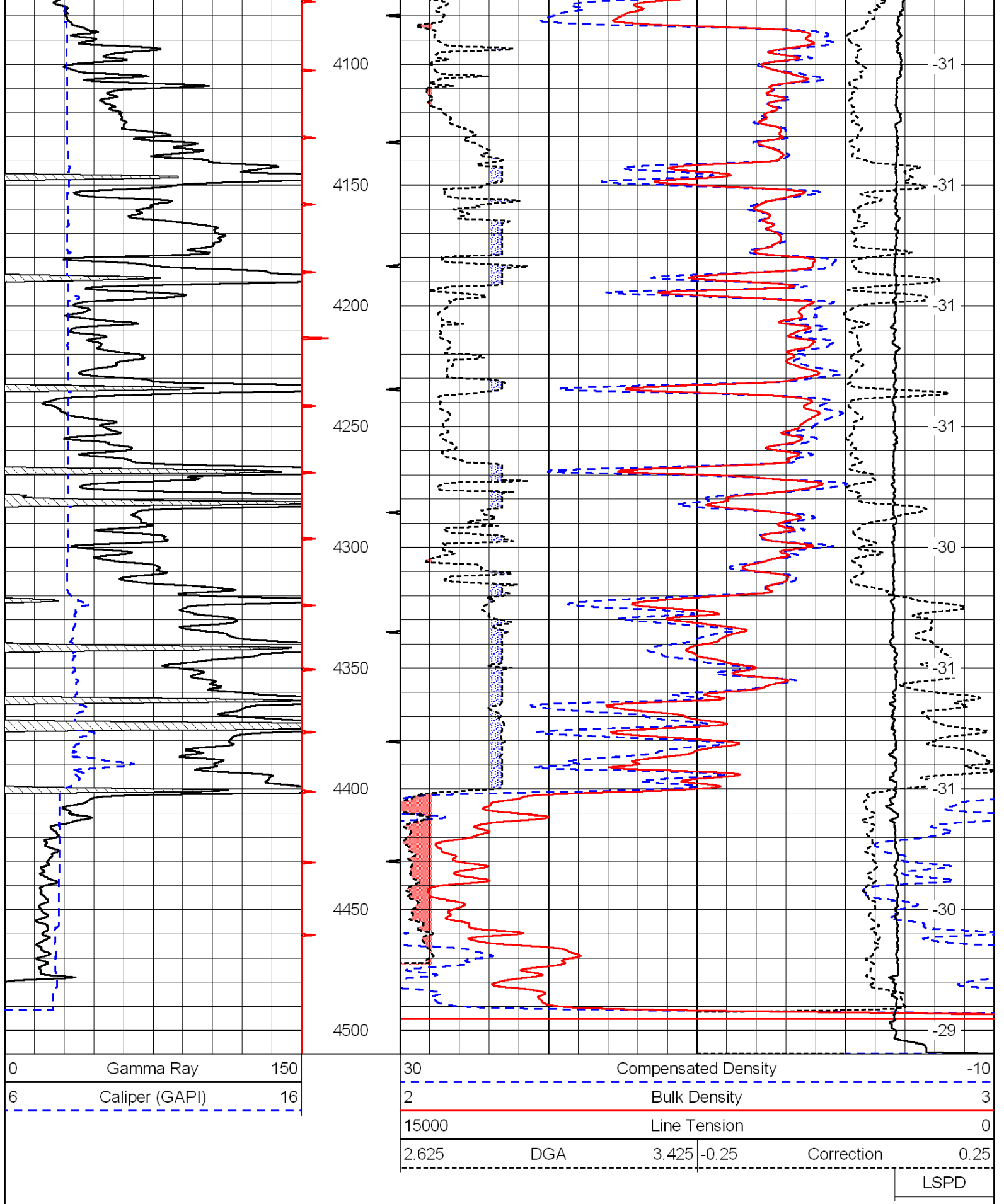
Thank you for using Log-Tech, Inc.
 (785) 625-3858

Kingman, KS
 S to County Line on Hwy 14,
 1 S to Ridge Rd., 2 1/2 W, N Into

0	Gamma Ray	150
6	Caliper (GAPI)	16

30	Compensated Density		-10
2	Bulk Density		3
15000	Line Tension		0
2.625	DGA	3.425	-0.25
		Correction	0.25
			LSPD





Database File: c:\warrior\data\mtm_maloney m no. 2\mtmhd.db
 Dataset Pathname: DIL/mtmstk
 Presentation Format: cndlspec
 Dataset Creation: Wed Mar 21 05:13:58 2012

0	Gamma Ray	150
6	Caliper (GAPI)	16

30	Compensated Neutron (Limestone)			-10	
30	Compensated Density (Limestone)			-10	
2.625	DGA	3.425	-0.25	Correction	0.25
15000	Line Tension			0	

LSPD

