



DIGITAL LOG (785) 625-3858

**Microresistivity
Log**

API No. 15-115-21,416-00-00

Company **K-Bar Oil, LLC**
 Well **Hawk No-14**
 Field **Edmonds**
 County **Marion** State **Kansas**

Location **1,215' FNL & 2,262' FEL**

Sec: **31** Twp: **22S** Rge: **4E**

Other Services
 CNL/CDL
 DIL

Permanent Datum	Ground Level	Elevation	1405
Log Measured From	Ground Level	0	Ft. Above Perm. Datum
Drilling Measured From	Ground Level		
Date		08/27/2010	
Run Number		Two	
Depth Driller		2592	
Depth Logger		2591	
Bottom Logged Interval		2590	
Top Log Interval		1750	
Casing Driller		8.625 @ 200	
Casing Logger		200	
Bit Size		7.875	
Type Fluid in Hole		Chemical	
Salinity, ppm CL		1.600	
Density / Viscosity		9.5 35	
pH / Fluid Loss		8.0 10.8	
Source of Sample		Flowline	
Rm @ Meas. Temp		1.1 @ 72	
Rmf @ Meas. Temp		.83 @ 72	
Rmc @ Meas. Temp		1.49 @ 72	
Source of Rmf / Rmc		Charts	
Rm @ BHT		.76 @ 104	
Operating Rig Time		3 Hours	
Max Rec. Temp. F		104	
Equipment Number		17	
Location		Hays	
Recorded By		Mike Garrison	
Witnessed By		Hal Krehbiel	
		Wes Hansen	

<<< Fold Here >>>

All interpretations are opinions based on inferences from electrical or other measurements and we cannot and do not guarantee the accuracy or correctness of any interpretation, and we shall not, except in the case of gross or willful negligence on our part, be liable or responsible for any loss, costs, damages, or expenses incurred or sustained by anyone resulting from any interpretation made by any of our officers, agents or employees. These interpretations are also subject to our general terms and conditions set out in our current Price Schedule.

Comments

Thank you for using Log-Tech, Inc.
 (785) 625-3858

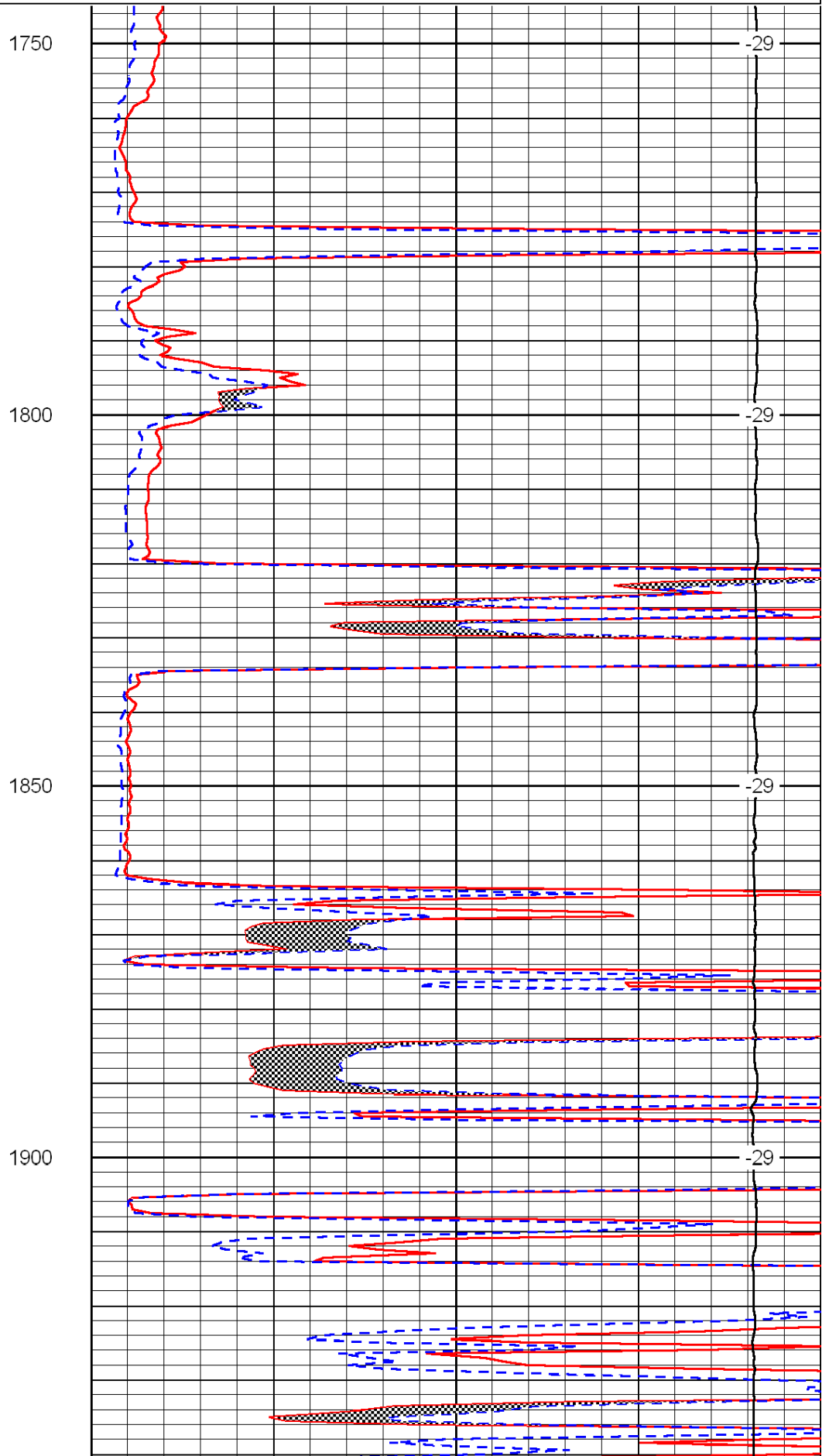
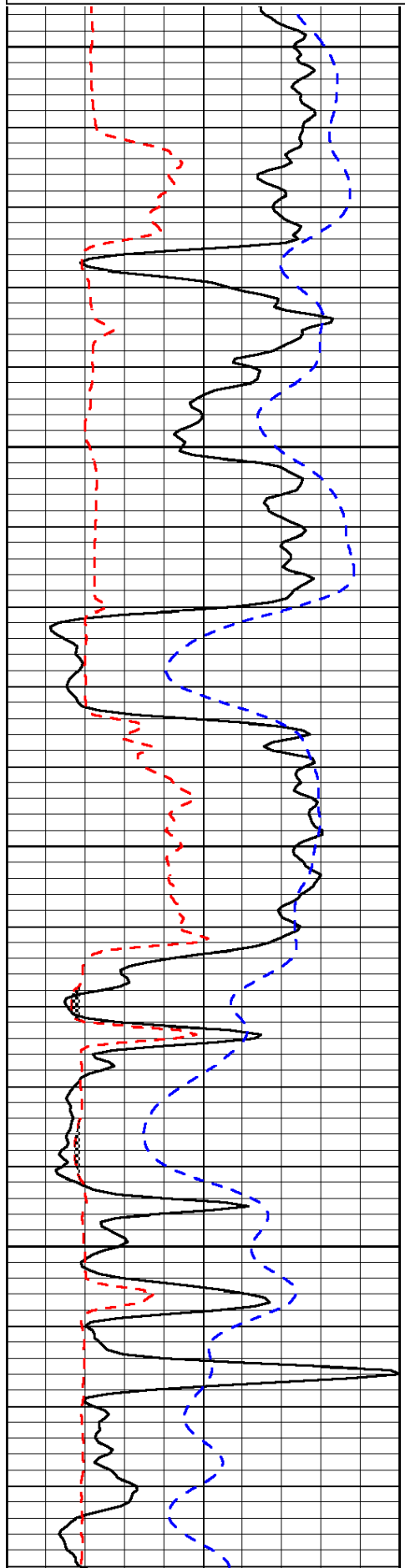
South Edge of Peabody, 5 South on Old Mill Road to 30th Rd, 2 East to Quail Creek Rd,
 1 South to 20th Rd, 2 1/2 East, South Into

Database File: c:\warrior\data\k-bar oil_hawk no-14\k-bar_hawk-14hd.db
 Dataset Pathname: dil/kbarstock
 Presentation Format: micro
 Dataset Creation: Fri Aug 27 02:49:16 2010
 Charted by: Depth in Feet scaled 1:240

0	Gamma Ray	150
6	Micro Log Caliper (GAPI)	16
-200	SP (mV)	0

0	Micro Inverse 1 X 1	40
0	Micro Normal 2"	40
15000	Line Weight	0

LSPD



1750

-29

1800

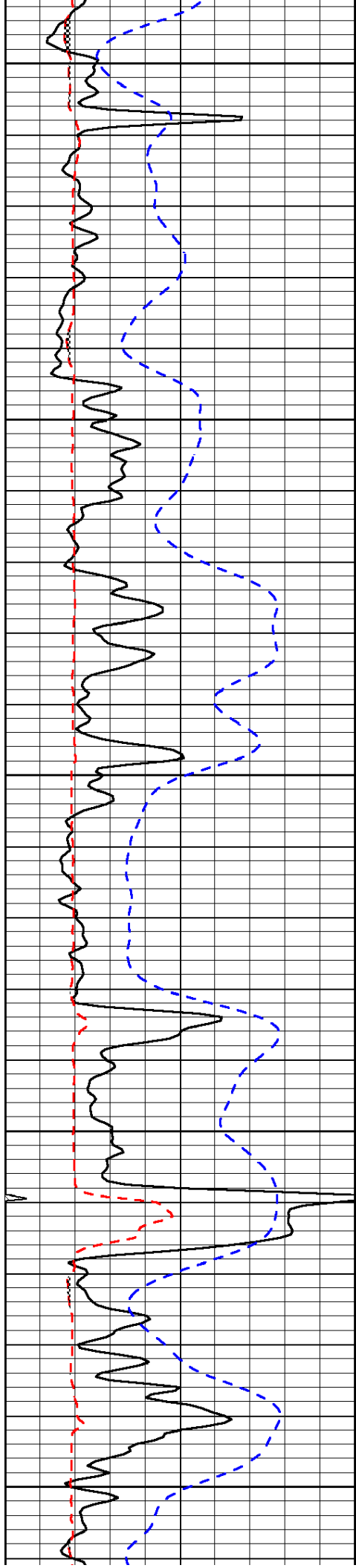
-29

1850

-29

1900

-29



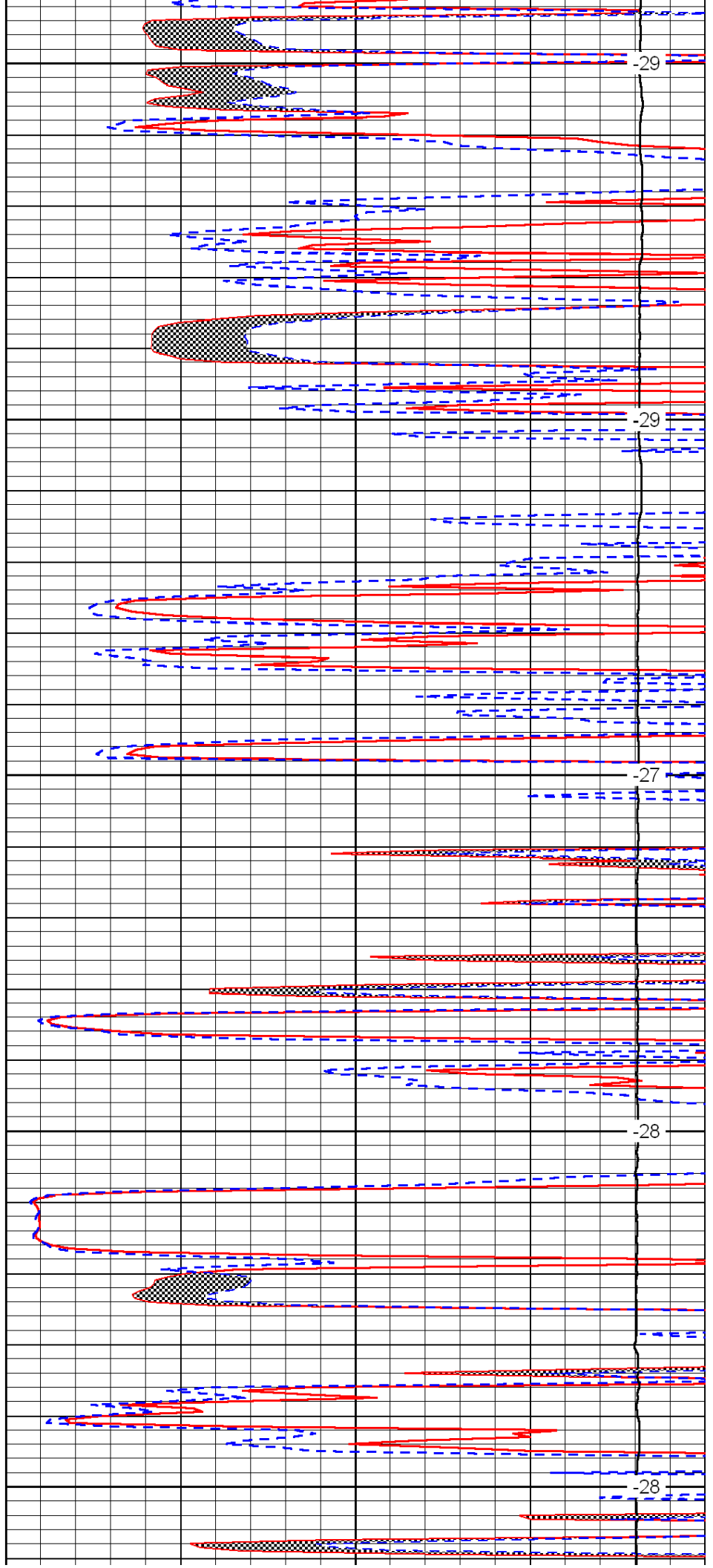
1950

2000

2050

2100

2150



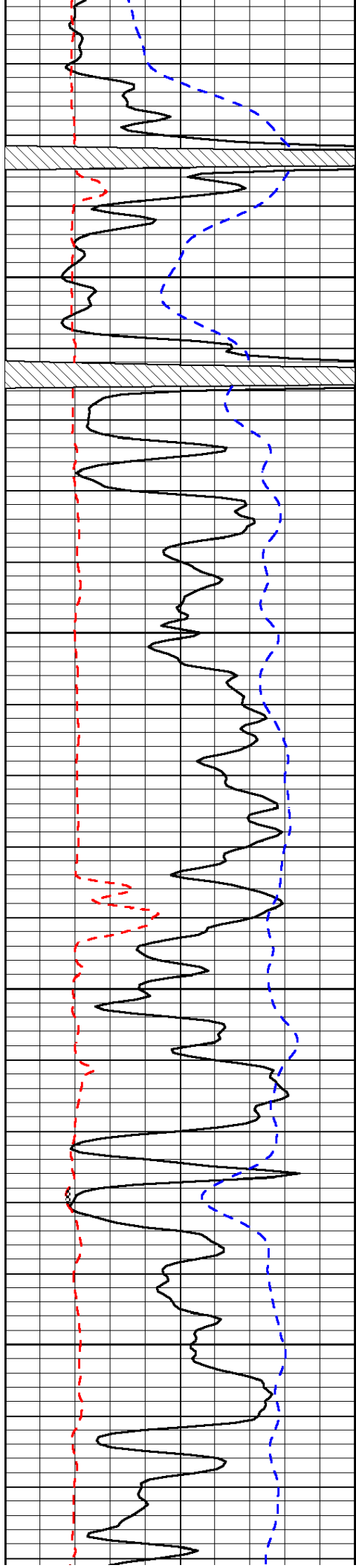
-29

-29

-27

-28

-28

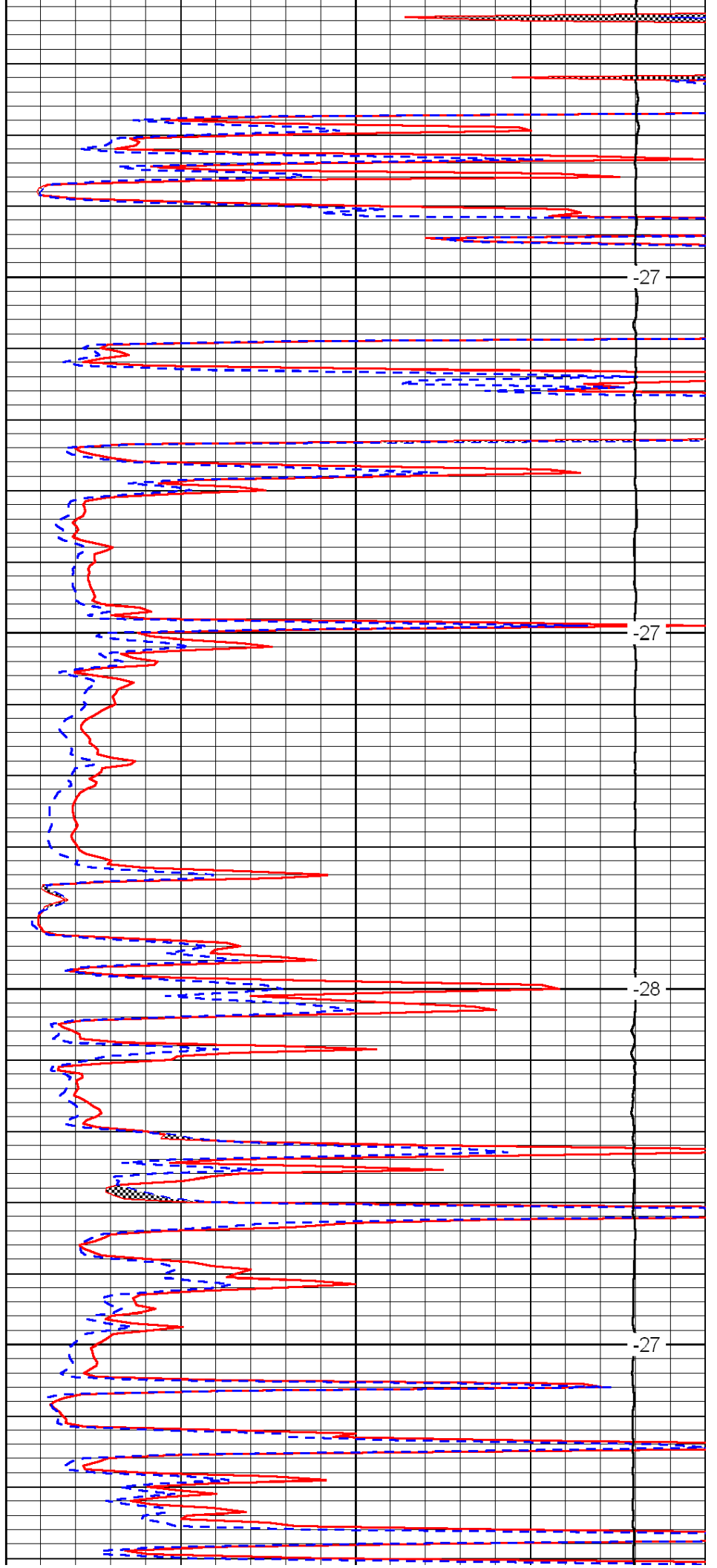


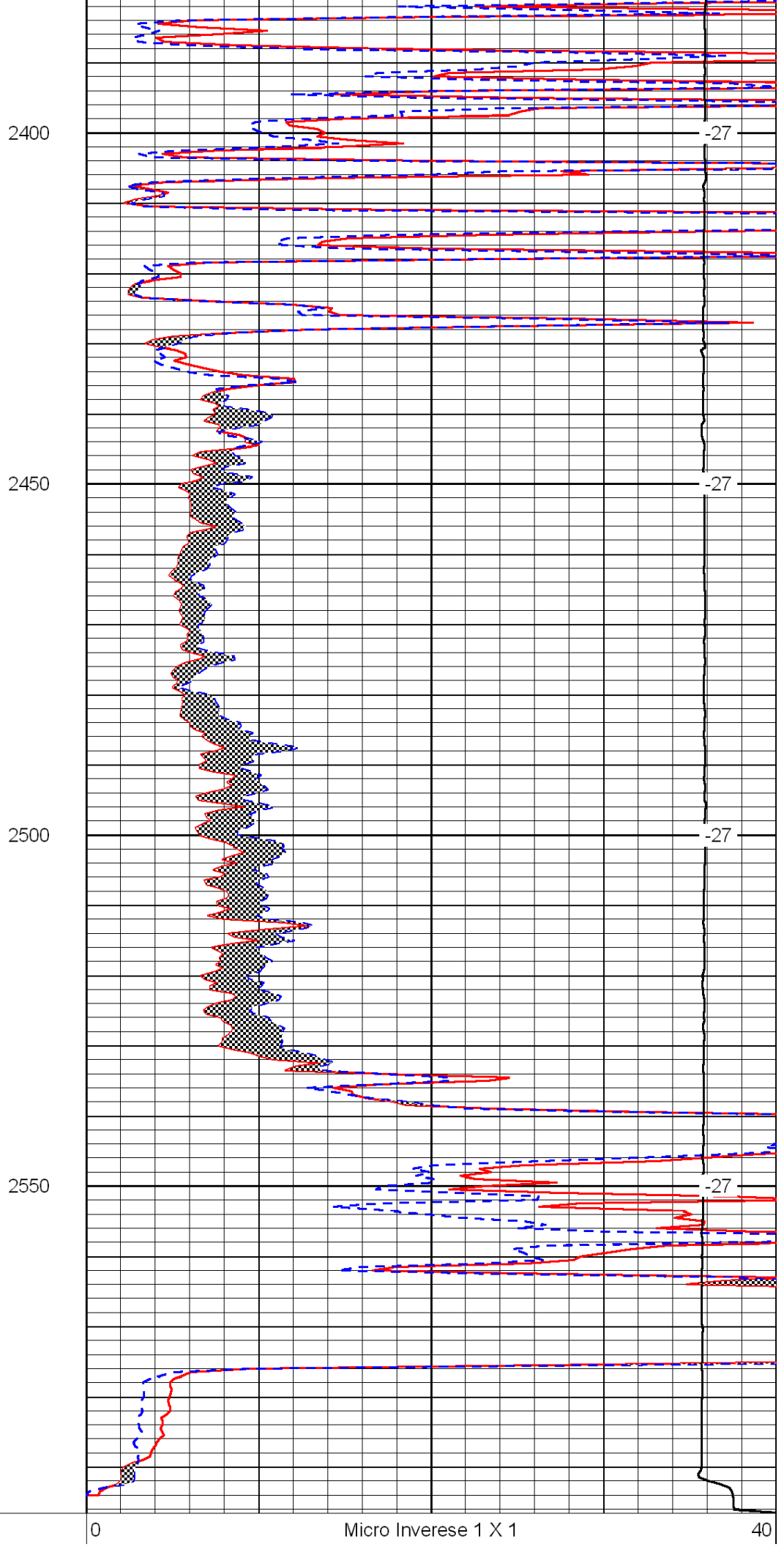
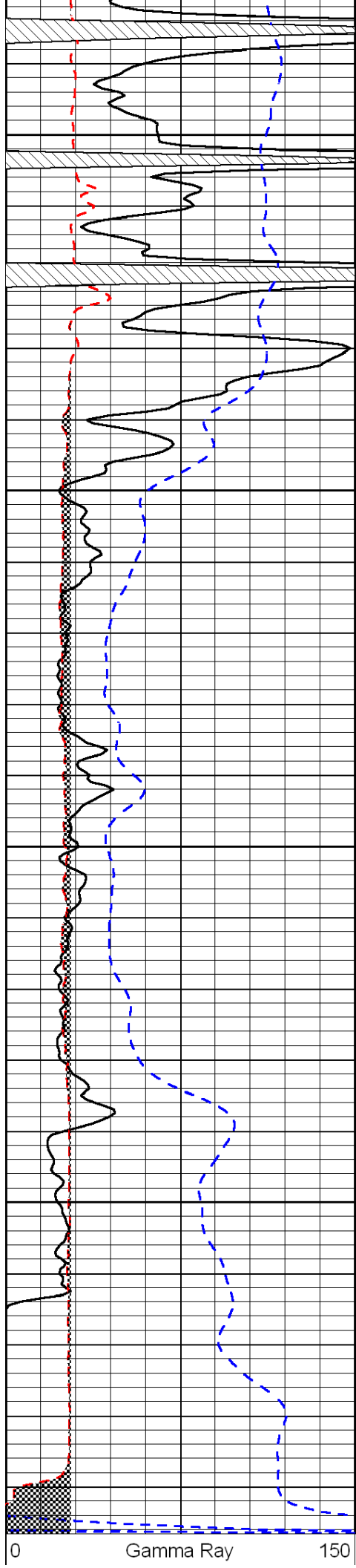
2200

2250

2300

2350





6	Micro Log Caliper (GAPI)	16
-200	SP (mV)	0

0	Micro Normal 2"	40
15000	Line Weight	0

LSPD
