



DIGITAL LOG (785) 625-3858

Dual Compensated Porosity Log

API No. 15-115-21,416-00-00

Company K-Bar Oil, LLC
 Well Hawk No-14
 Field Edmonds
 County Marion
 State Kansas

Location 1,215' FNL & 2,262' FEL

Sec: 31 Twp: 22S Rge: 4E

Other Services
 DIL
 MEL

Permanent Datum Ground Level Elevation 1405
 Log Measured From Ground Level 0 Ft. Above Perm. Datum
 Drilling Measured From Ground Level

K.B. D.F. G.L. 1405

Date 08/27/2010

Run Number One

Type Log CNL / CDL

Depth Driller 2592

Depth Logger 2591

Bottom Logged Interval 2570

Top Logged Interval 1750

Type Fluid In Hole Chemical

Salinity, PPM CL 1,600

Density 9.5

Level Full

Max. Rec. Temp. F 104

Operating Rig Time 3 Hours

Equipment -- Location 17 Hays

Recorded By Mike Garrison

Witnessed By Hal Krehbiel Wes Hansen

Borehole Record				Casing Record			
Run No.	Bit	From	To	Size	Wgt.	From	To
1	12.25	00	200	8.625	24#	00	200
2	7.875	200	2592				

<<< Fold Here >>>

All interpretations are opinions based on inferences from electrical or other measurements and we cannot and do not guarantee the accuracy or correctness of any interpretation, and we shall not, except in the case of gross or willful negligence on our part, be liable or responsible for any loss, costs, damages, or expenses incurred or sustained by anyone resulting from any interpretation made by any of our officers, agents or employees. These interpretations are also subject to our general terms and conditions set out in our current Price Schedule.

Comments

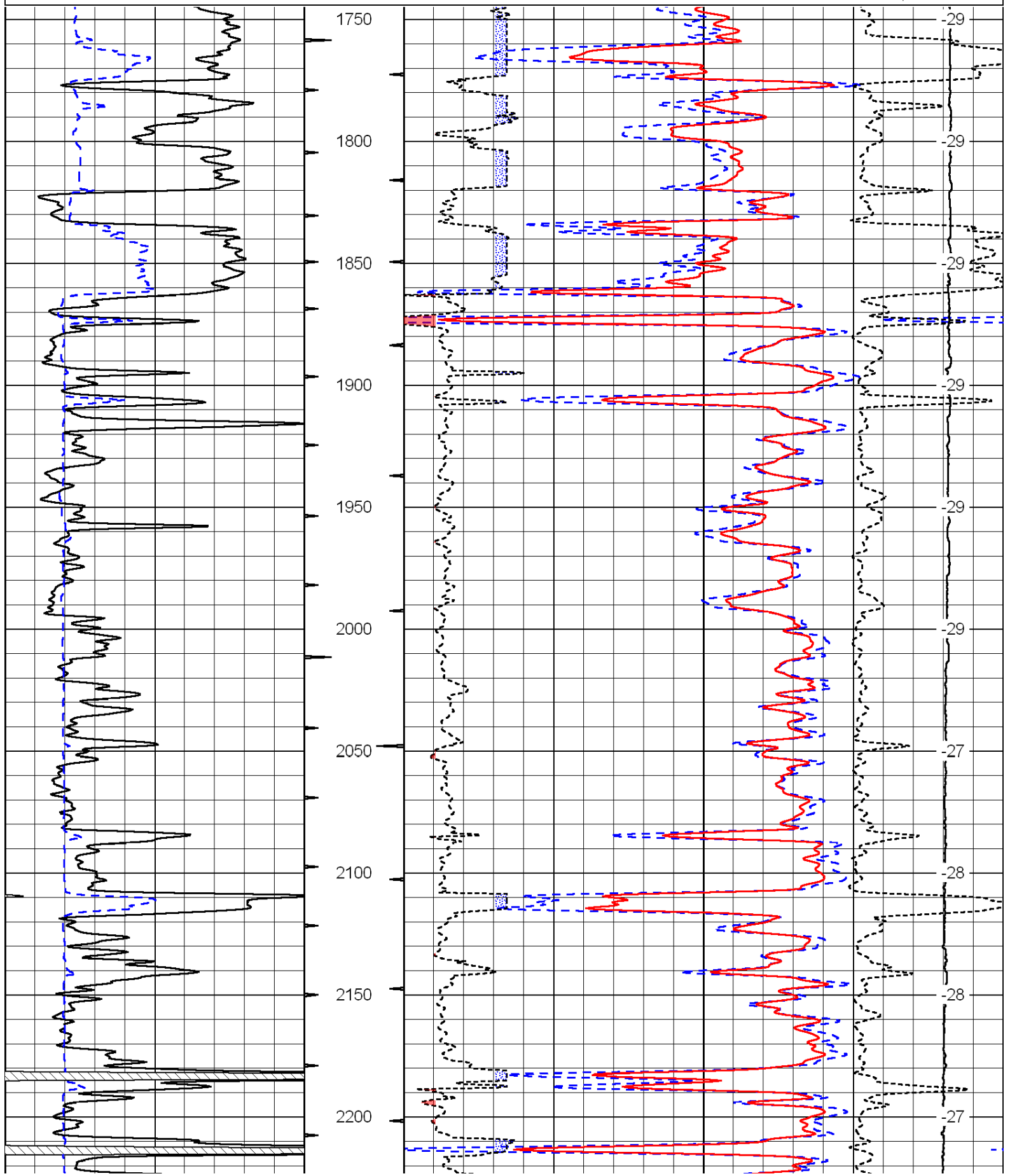
Thank you for using Log-Tech, Inc.
 (785) 625-3858

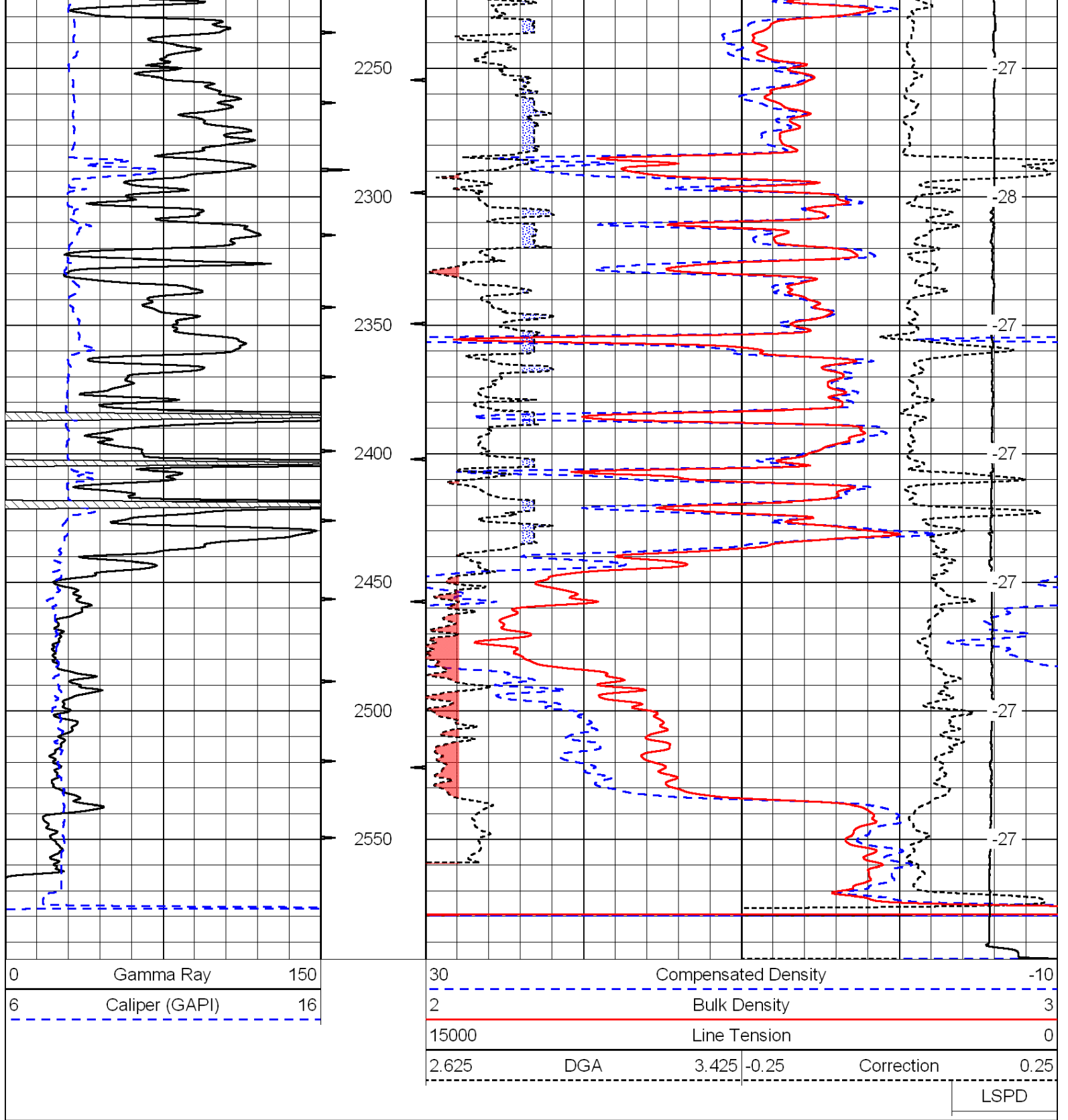
South Edge of Peabody, 5 South on Old Mill Road to 30th Rd, 2 East to Quail Creek Rd,
 1 South to 20th Rd, 2 1/2 East, South Into

Database File: c:\warrior\data\k-bar oil_hawk no-14\k-bar_hawk-14hd.db
 Dataset Pathname: dil/kbarstock
 Presentation Format: cdl
 Dataset Creation: Fri Aug 27 02:49:16 2010
 Charted by: Depth in Feet scaled 1:600

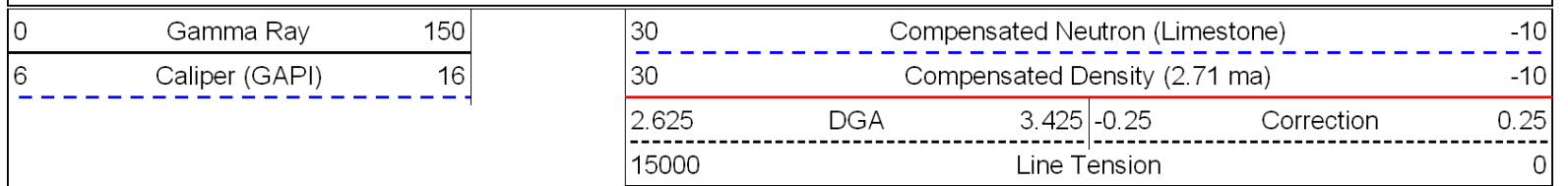
0	Gamma Ray	150
6	Caliper (GAPI)	16

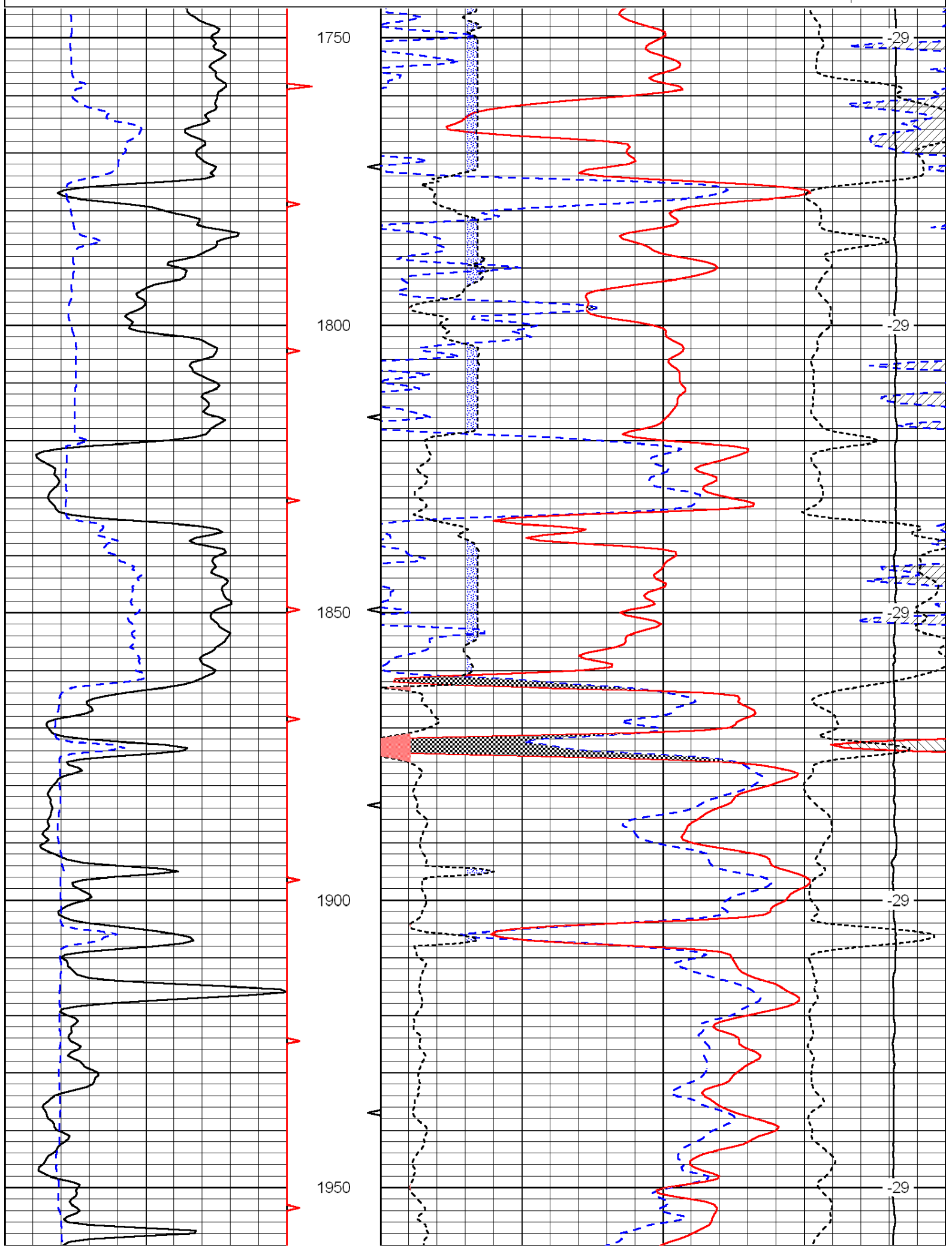
30	Compensated Density		-10
2	Bulk Density		3
15000	Line Tension		0
2.625	DGA	3.425	-0.25
			Correction
			0.25
LSPD			

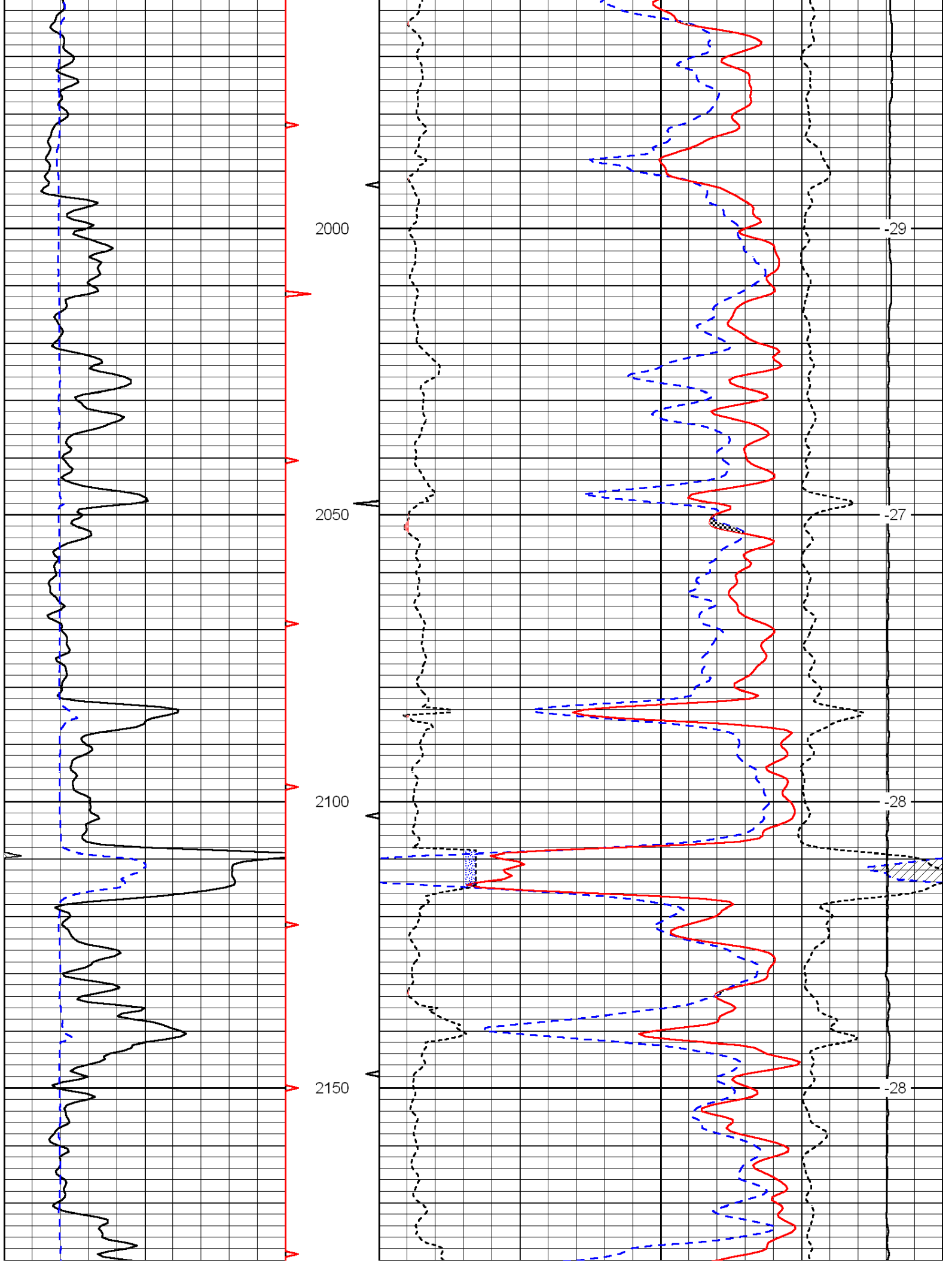


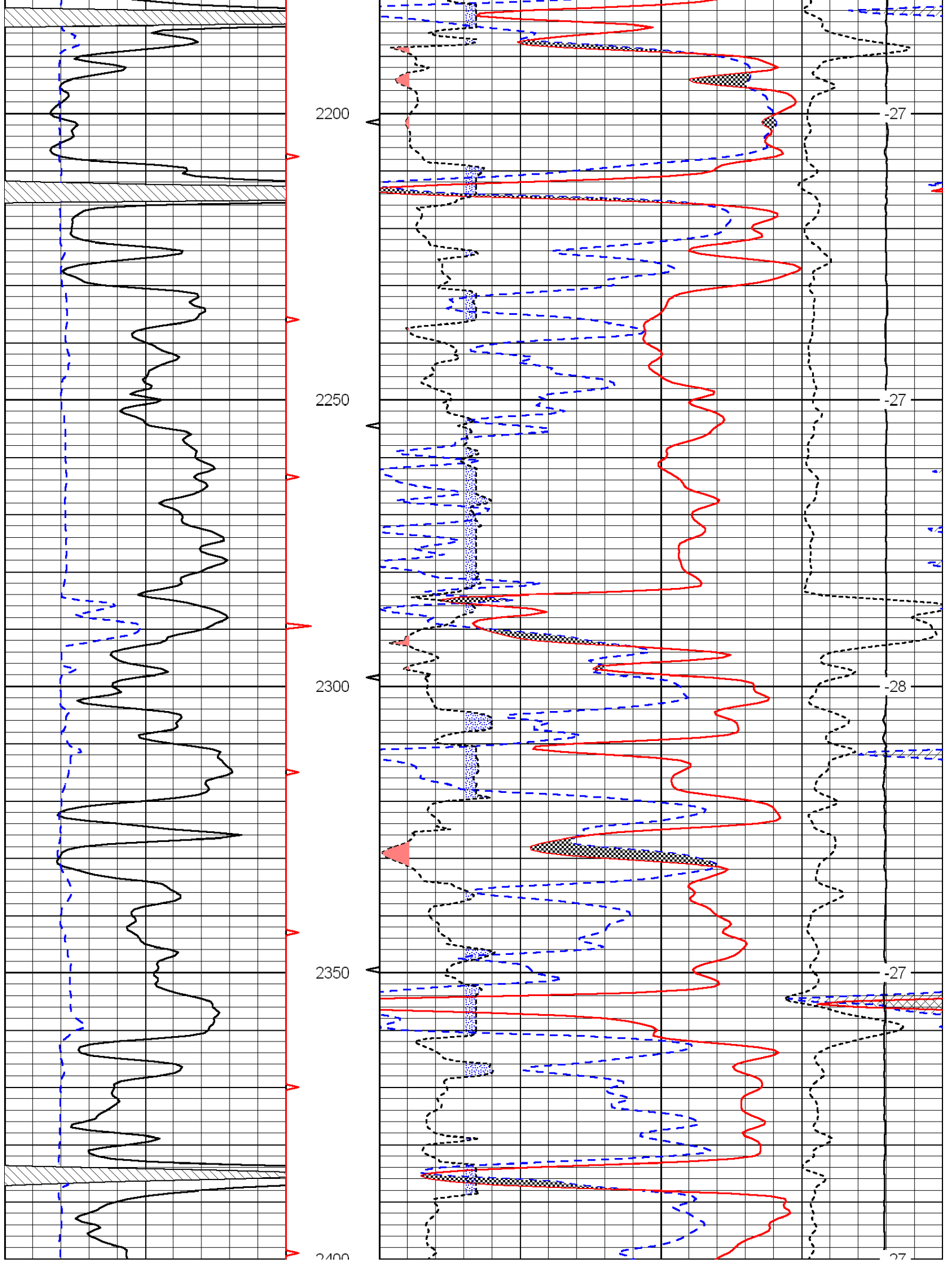


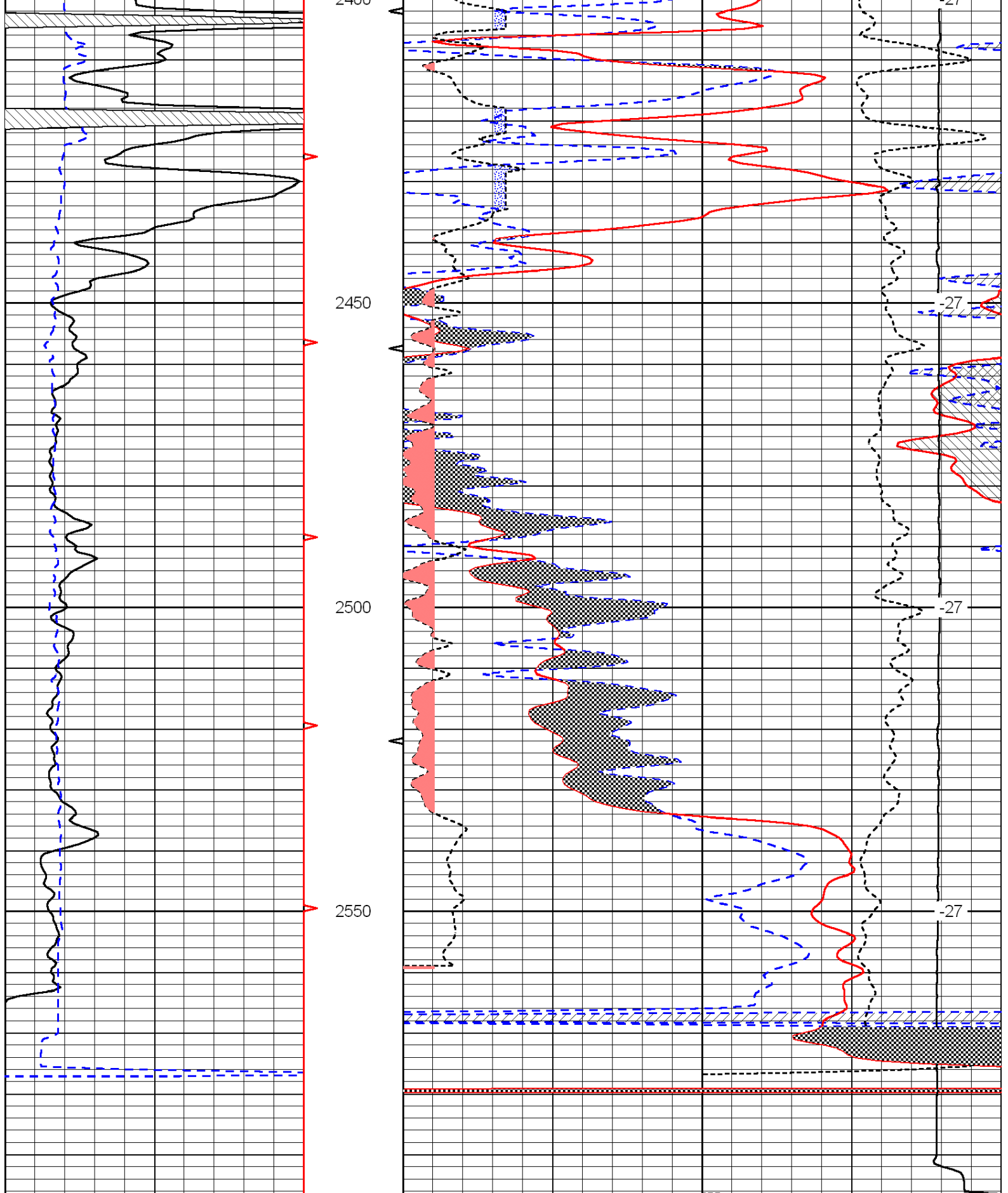
Database File: c:\warrior\data\k-bar oil_hawk no-14\k-bar_hawk-14hd.db
 Dataset Pathname: dil/kbarstck
 Presentation Format: cndlspec
 Dataset Creation: Fri Aug 27 02:49:16 2010
 Charted by: Depth in Feet scaled 1:240











0	Gamma Ray	150
6	Caliper (GAPI)	16

30	Compensated Neutron (Limestone)	-10
30	Compensated Density (2.71 ma)	-10

2.625	DGA	3.425	-0.25	Correction	0.25
15000	Line Tension				0

