



DIGITAL LOG (785) 625-3858

Dual Induction Log

API No.	15-115-21,416-00-00		
Company	K-Bar Oil, LLC		
Well	Hawk No-14		
Field	Edmonds		
County	Marion	State	Kansas
Location	1,215' FNL & 2,262' FEL		
Sec:	31	Twp:	22S Rge: 4E
Other Services	CNL/CDL MEL		
Elevation	Elevation 1405		

Permanent Datum	Ground Level	Elevation	1405
Log Measured From	Ground Level	0	Ft. Above Perm. Datum
Drilling Measured From	Ground Level		
Date	08/27/2010		
Run Number	One		
Depth Driller	2592		
Depth Logger	2591		
Bottom Logged Interval	2590		
Top Log Interval	200		
Casing Driller	8.625 @ 200		
Casing Logger	200		
Bit Size	7.875		
Type Fluid in Hole	Chemical		
Salinity, ppm CL	1,600		
Density / Viscosity	9.5	35	
pH / Fluid Loss	8.0	10.8	
Source of Sample	Flowline		
Rm @ Meas. Temp	1.1	@ 72	
Rmf @ Meas. Temp	.83	@ 72	
Rmc @ Meas. Temp	1.49	@ 72	
Source of Rmf / Rmc	Charts		
Rm @ BHT	.76	@ 104	
Operating Rig Time	3 Hours		
Max Rec. Temp. F	104		
Equipment Number	17		
Location	Hays		
Recorded By	Mike Garrison		
Witnessed By	Hal Krehbiel		

<<< Fold Here >>>

All interpretations are opinions based on inferences from electrical or other measurements and we cannot and do not guarantee the accuracy or correctness of any interpretation, and we shall not, except in the case of gross or willful negligence on our part, be liable or responsible for any loss, costs, damages, or expenses incurred or sustained by anyone resulting from any interpretation made by any of our officers, agents or employees. These interpretations are also subject to our general terms and conditions set out in our current Price Schedule.

Comments

Thank you for using Log-Tech, Inc.
(785) 625-3858

South Edge of Peabody, 5 South on Old Mill Road to 30th Rd, 2 East to Quail Creek Rd,
1 South to 20th Rd, 2 1/2 East, South Into

Database File: c:\warrior\data\k-bar oil_hawk no-14\k-bar_hawk-14hd.db
 Dataset Pathname: dil/kbarstock
 Presentation Format: dil2in
 Dataset Creation: Fri Aug 27 02:49:16 2010
 Charted by: Depth in Feet scaled 1:600

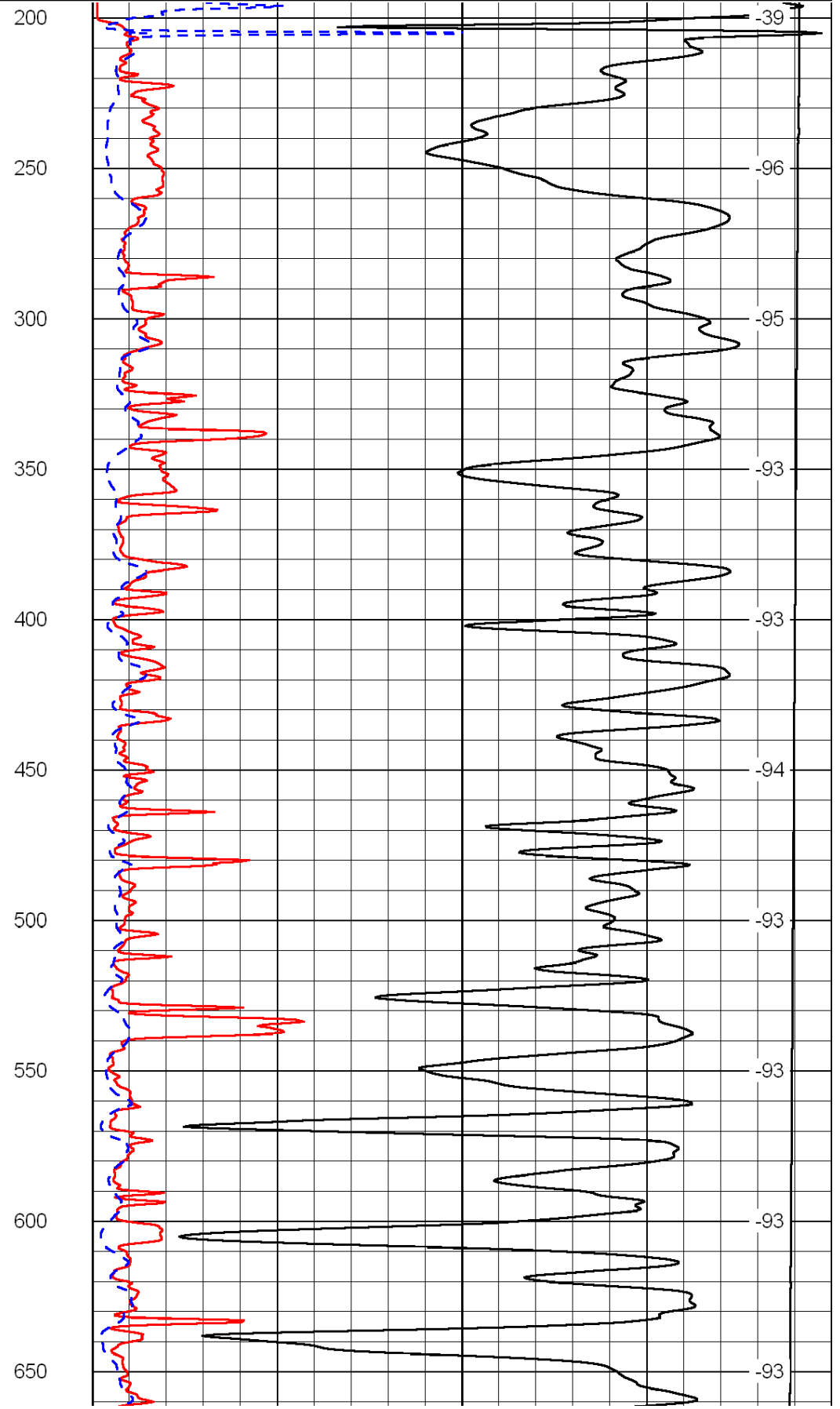
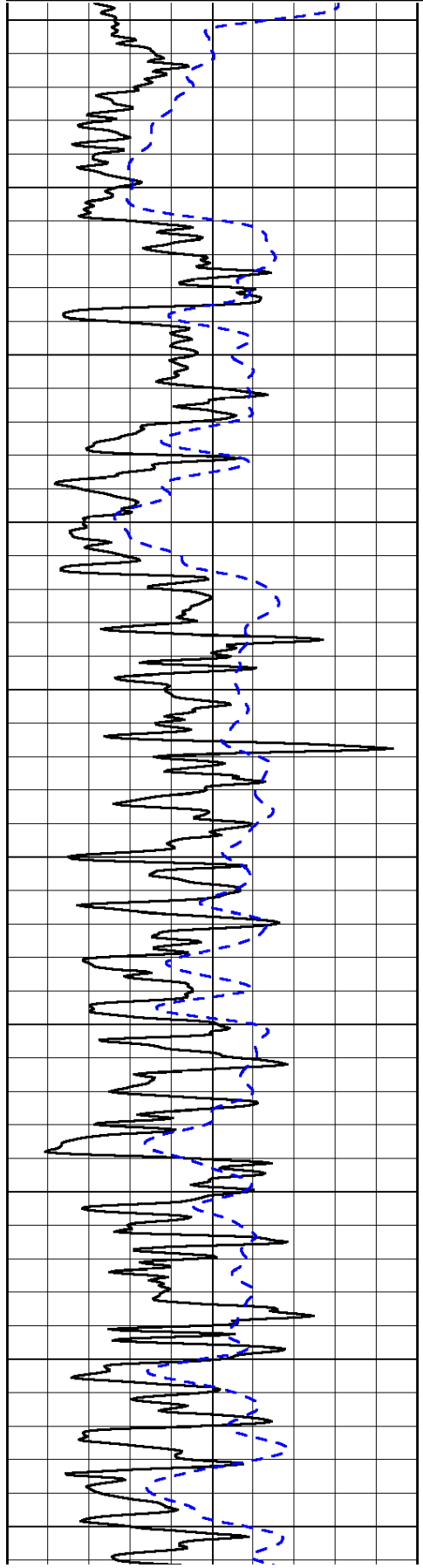
0	Gamma Ray	150
-200	SP (mV)	0

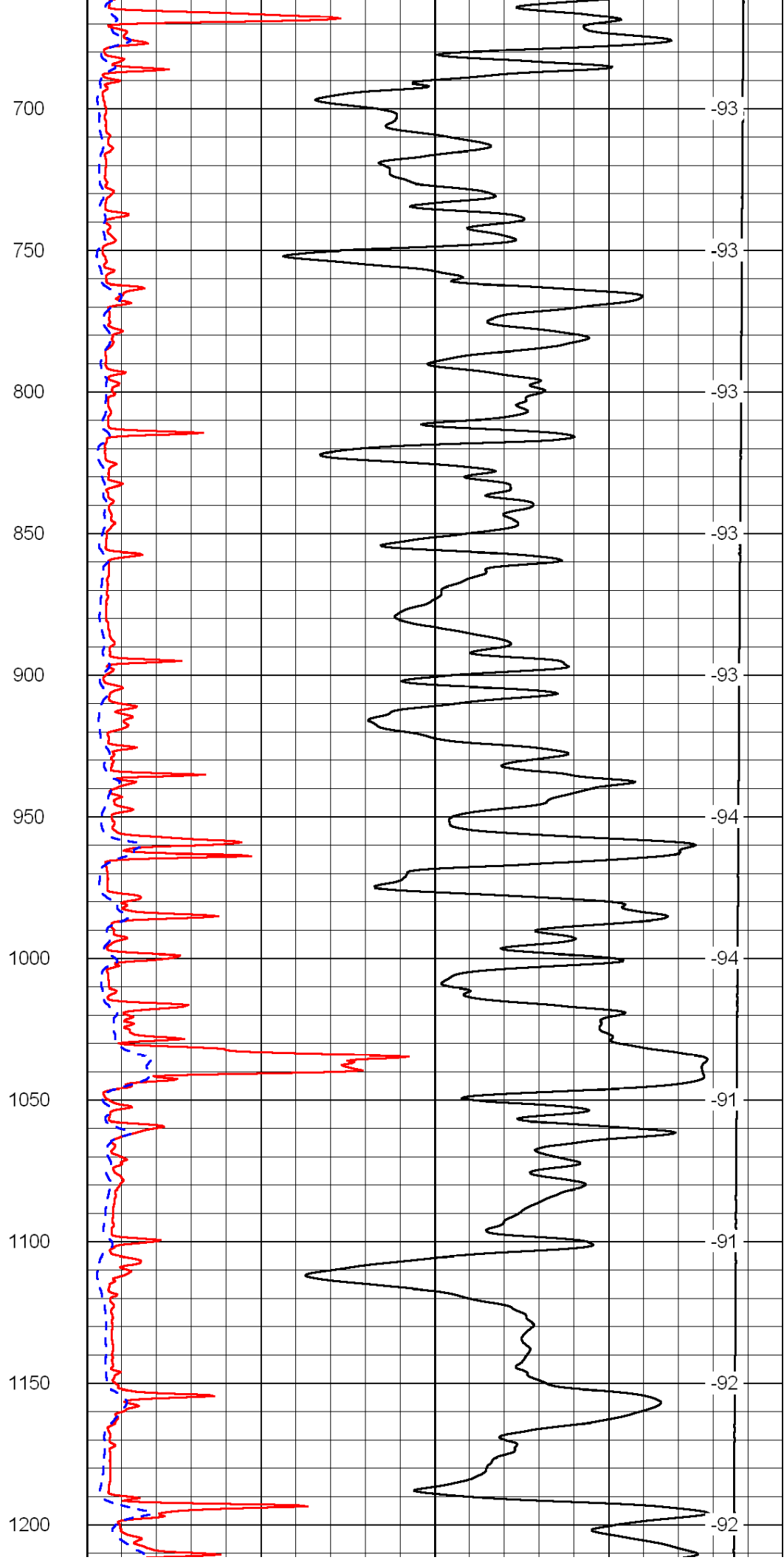
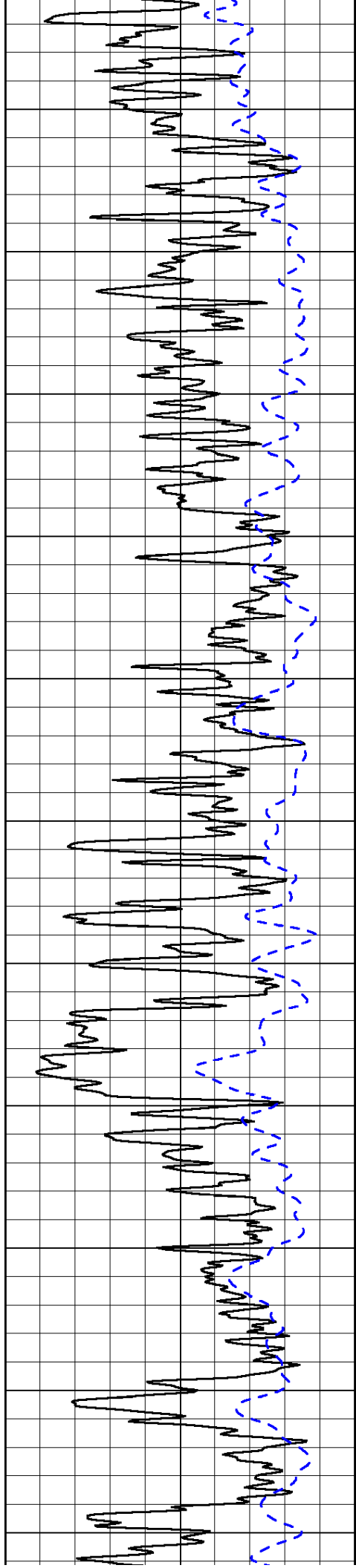
0	Shallow Resistivity	50
0	Deep Resistivity	50

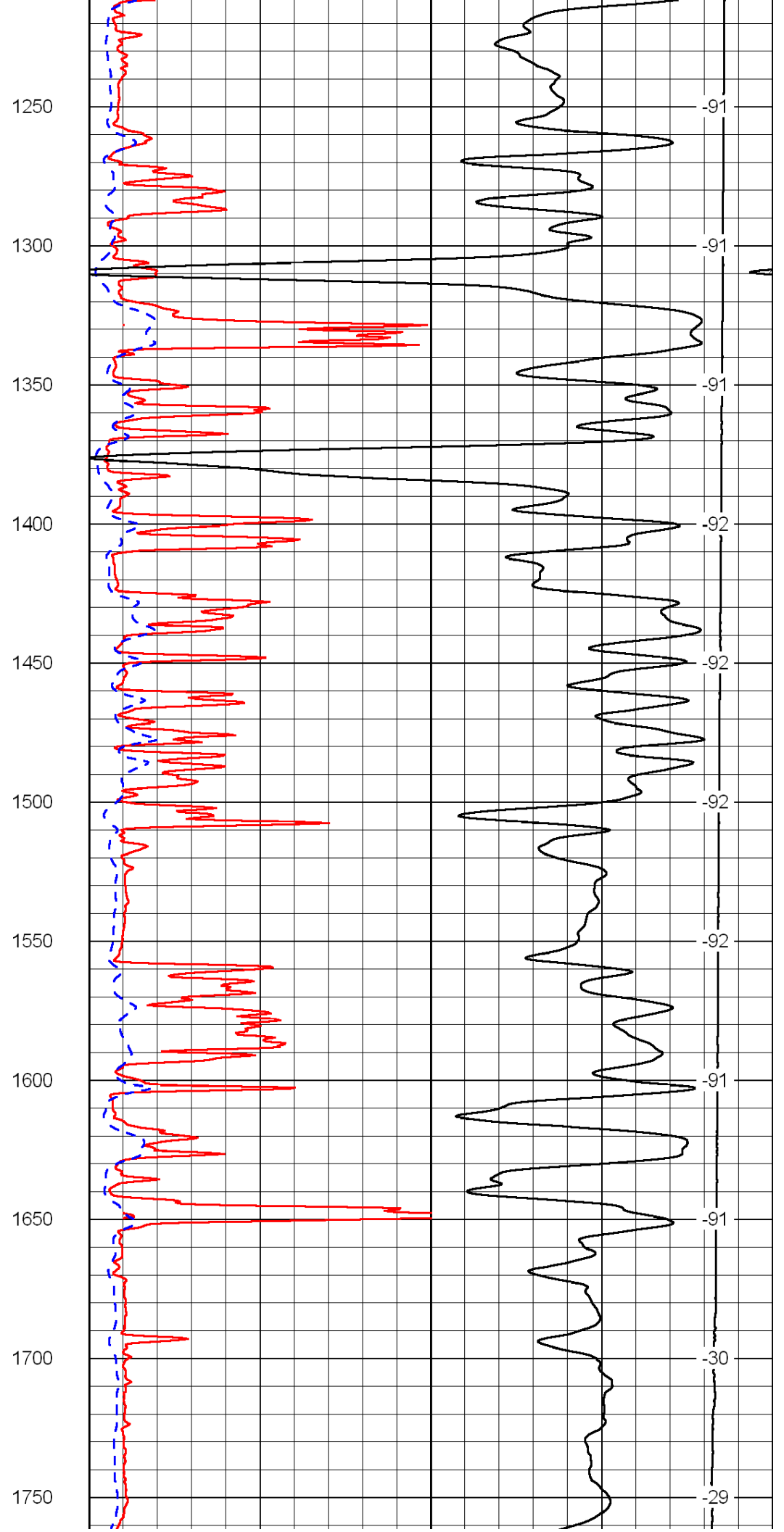
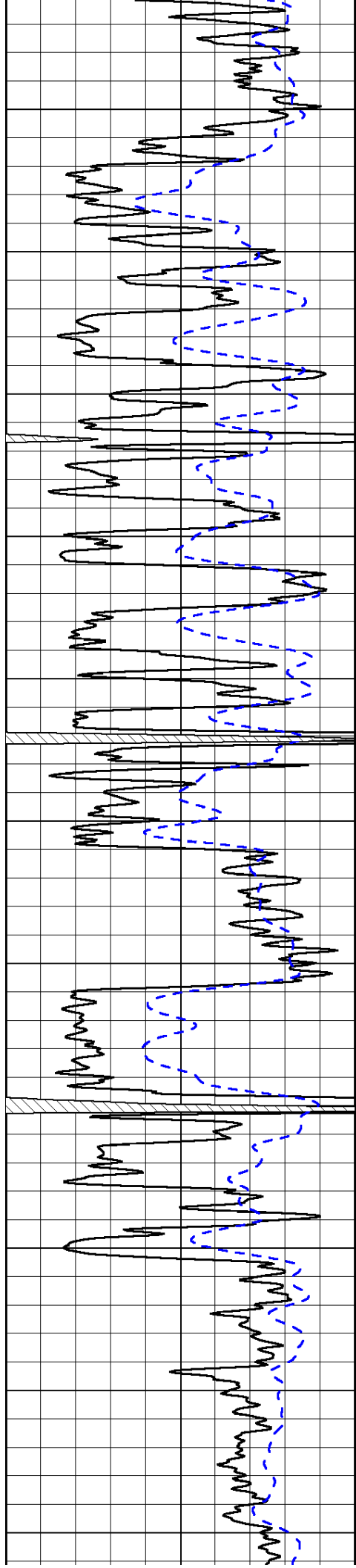
LSPD

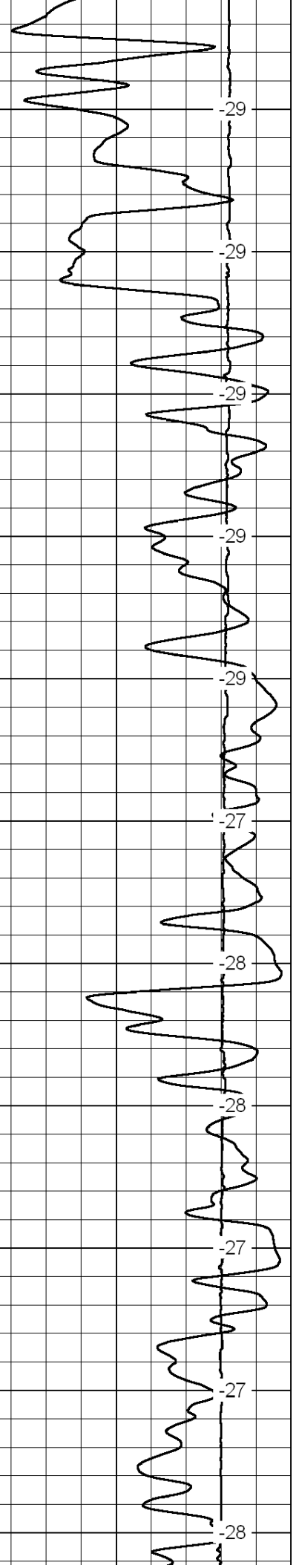
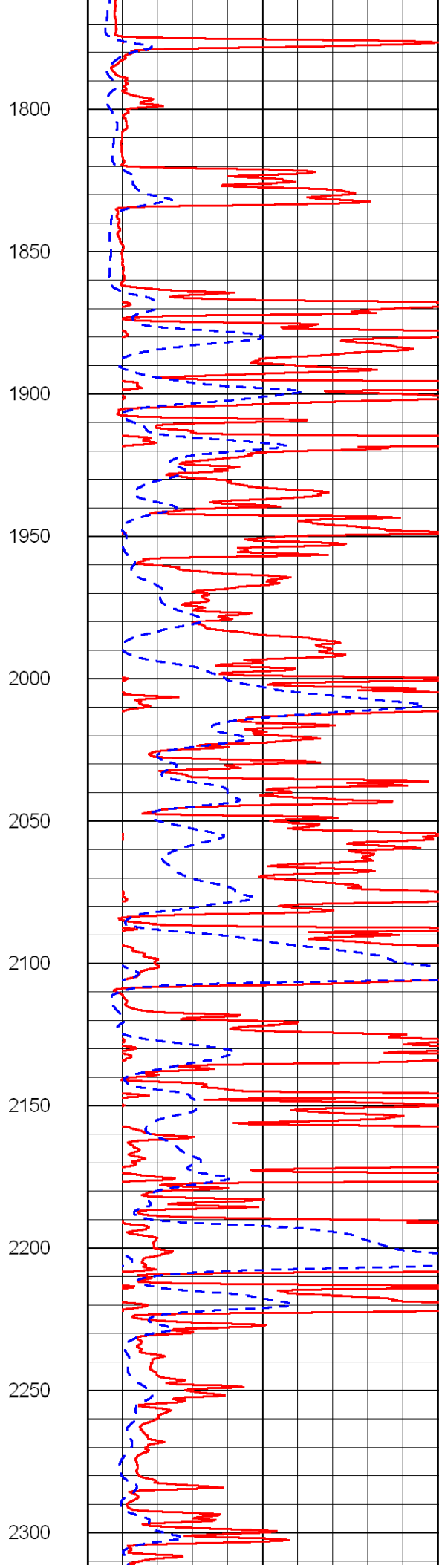
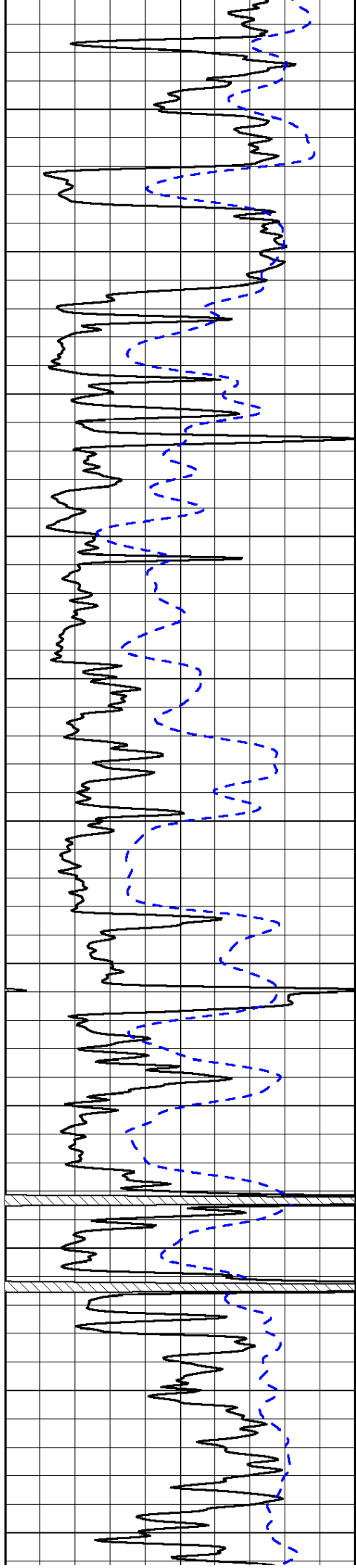
1000	Conductivity	0
15000	Line Tension	0

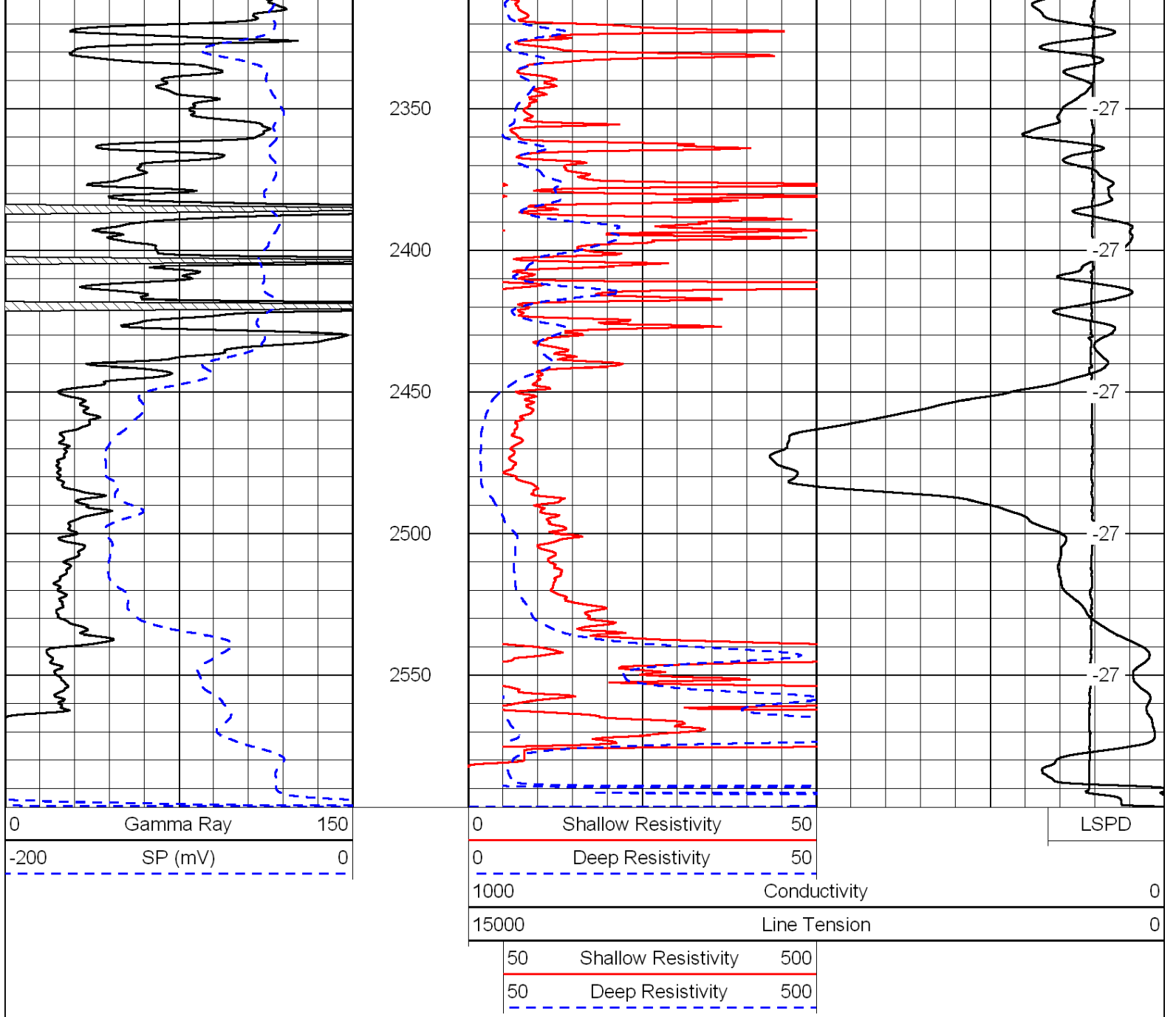
50	Shallow Resistivity	500
50	Deep Resistivity	500



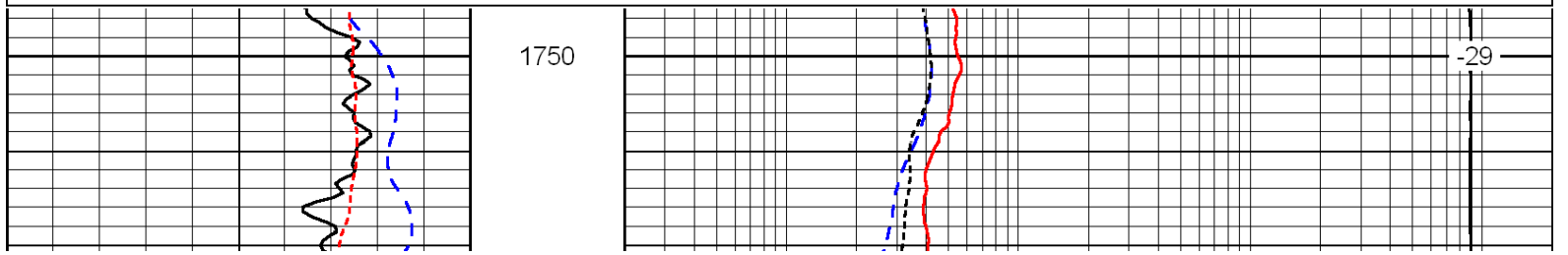
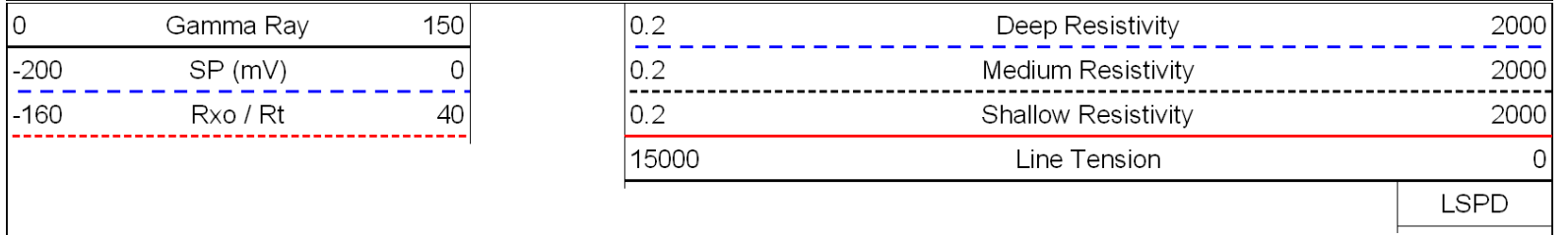


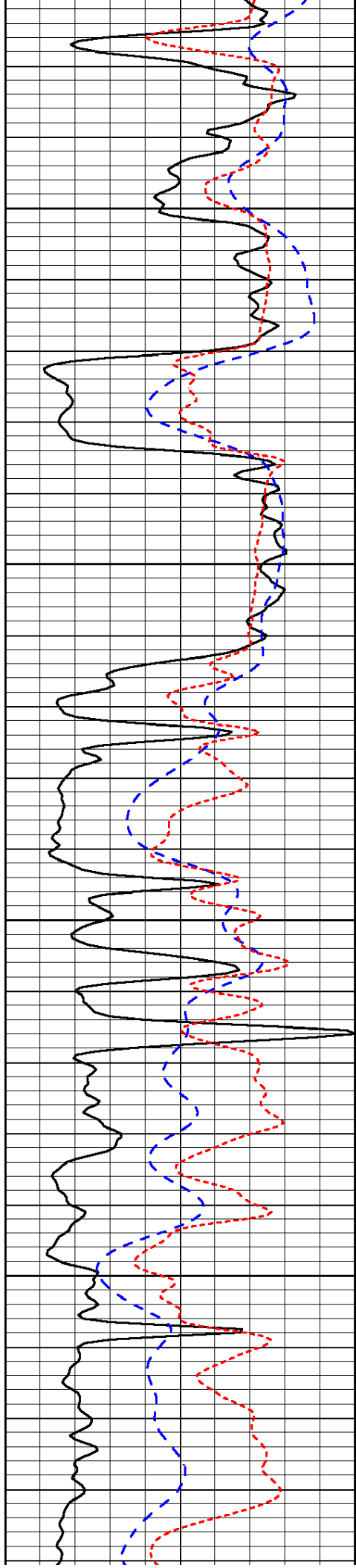






Database File: c:\warrior\data\k-bar oil_hawk no-14\k-bar_hawk-14hd.db
 Dataset Pathname: dil/kbarstck
 Presentation Format: dil
 Dataset Creation: Fri Aug 27 02:49:16 2010
 Charted by: Depth in Feet scaled 1:240



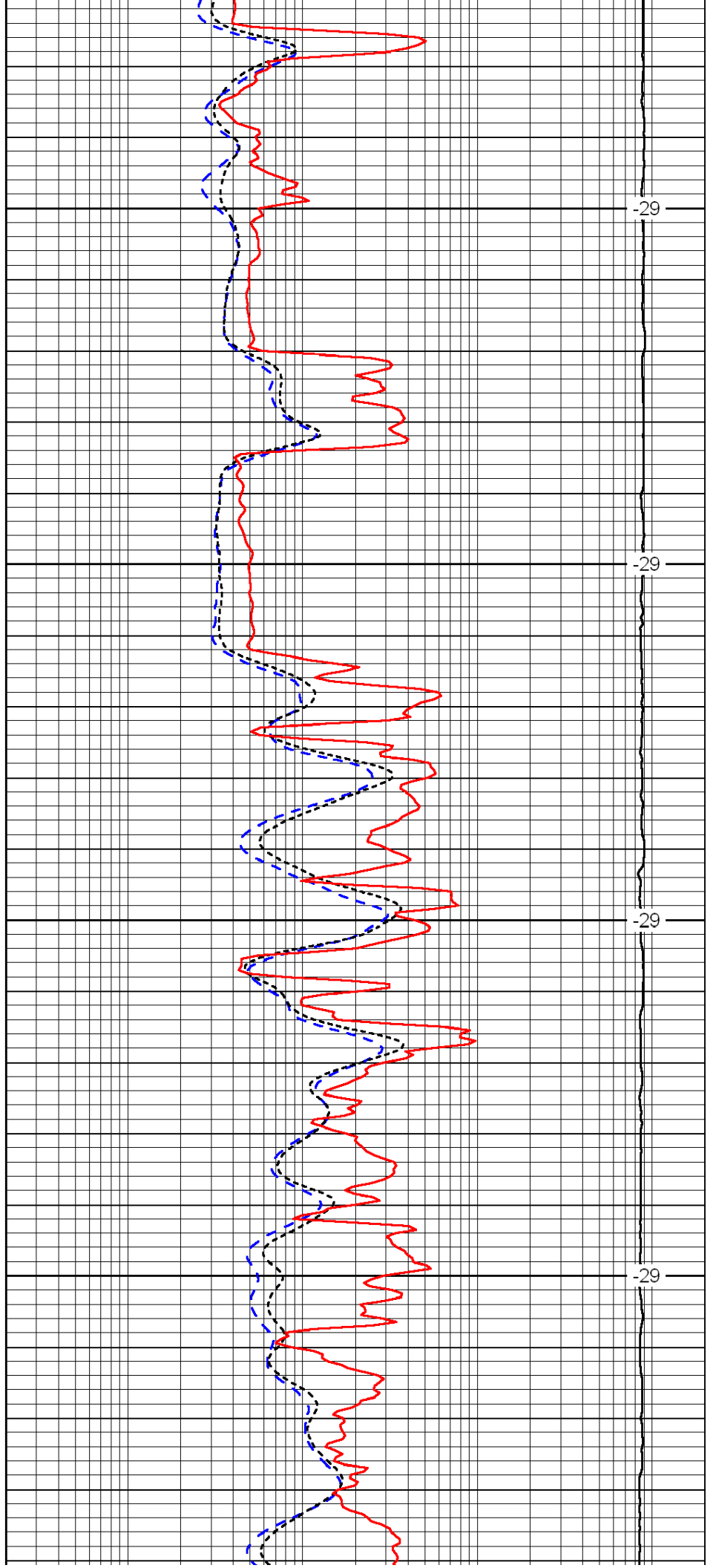


1800

1850

1900

1950

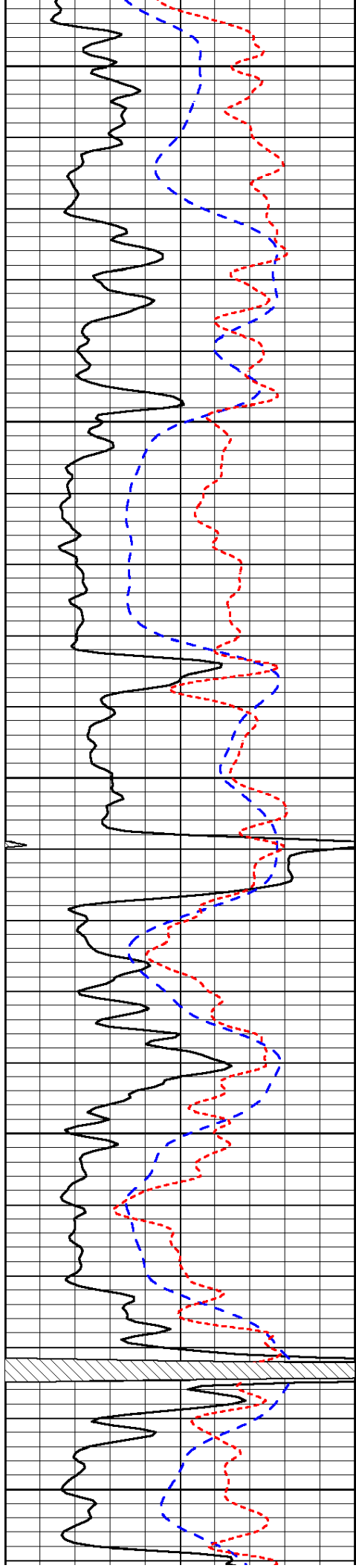


-29

-29

-29

-29



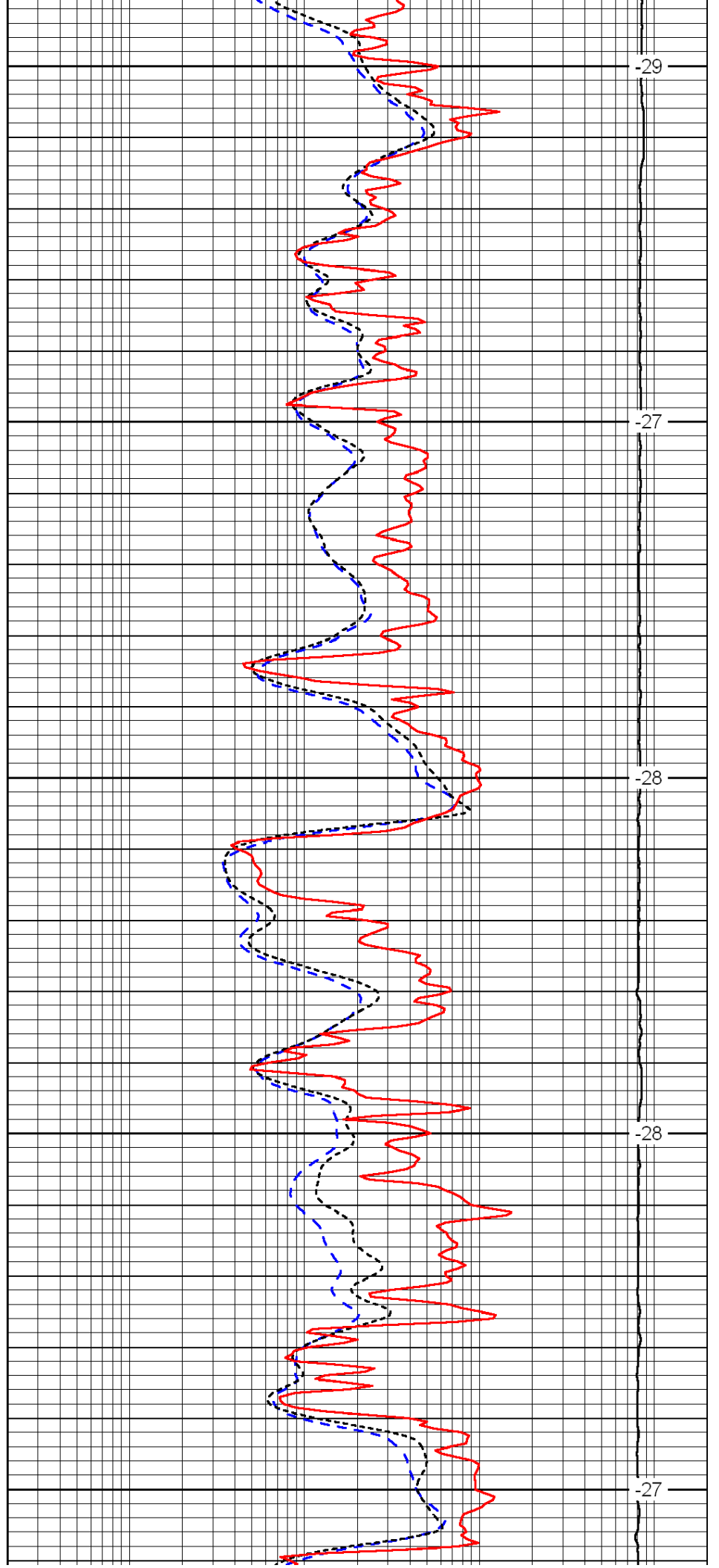
2000

2050

2100

2150

2200



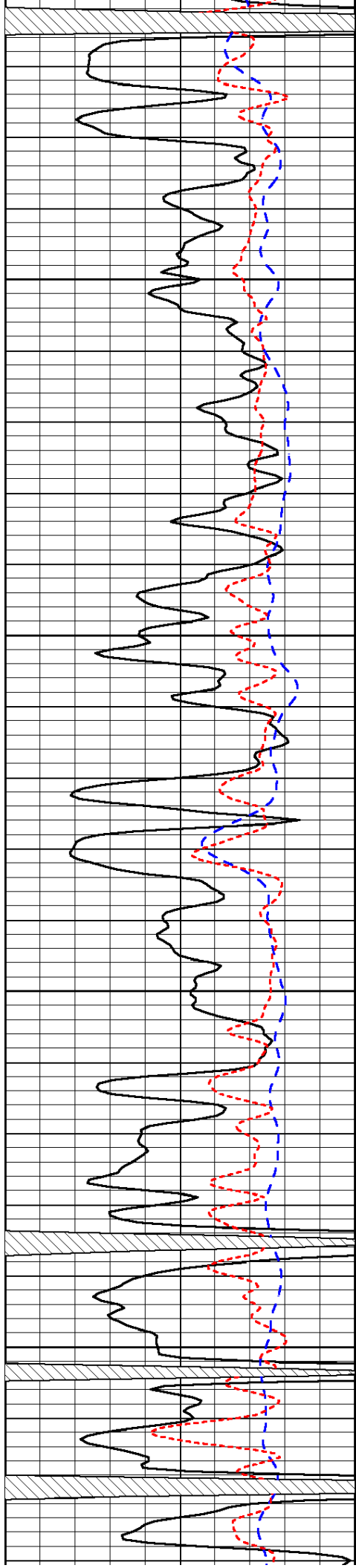
-29

-27

-28

-28

-27

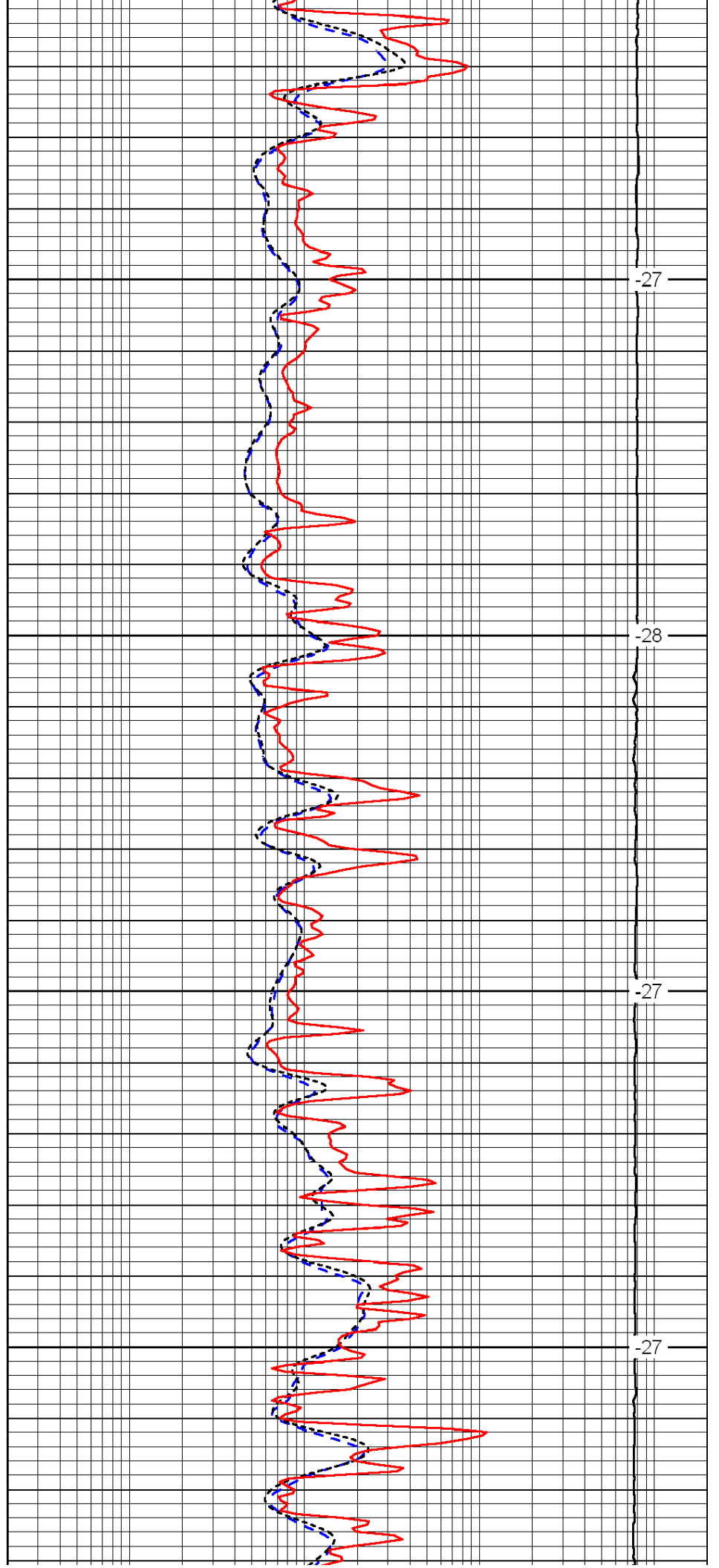


2250

2300

2350

2400

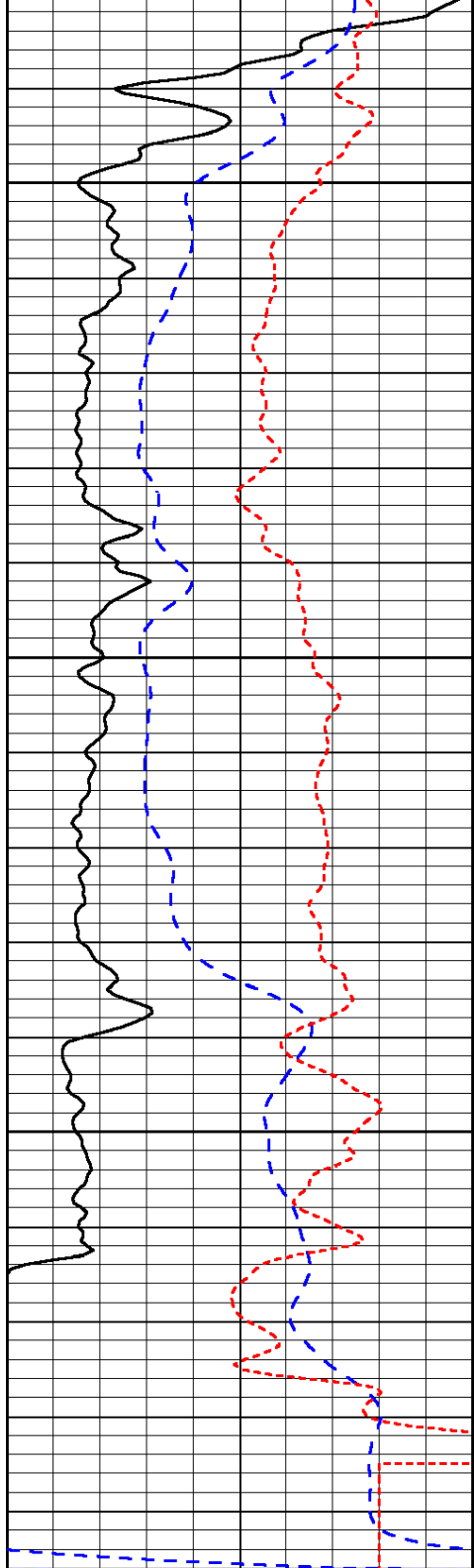


-27

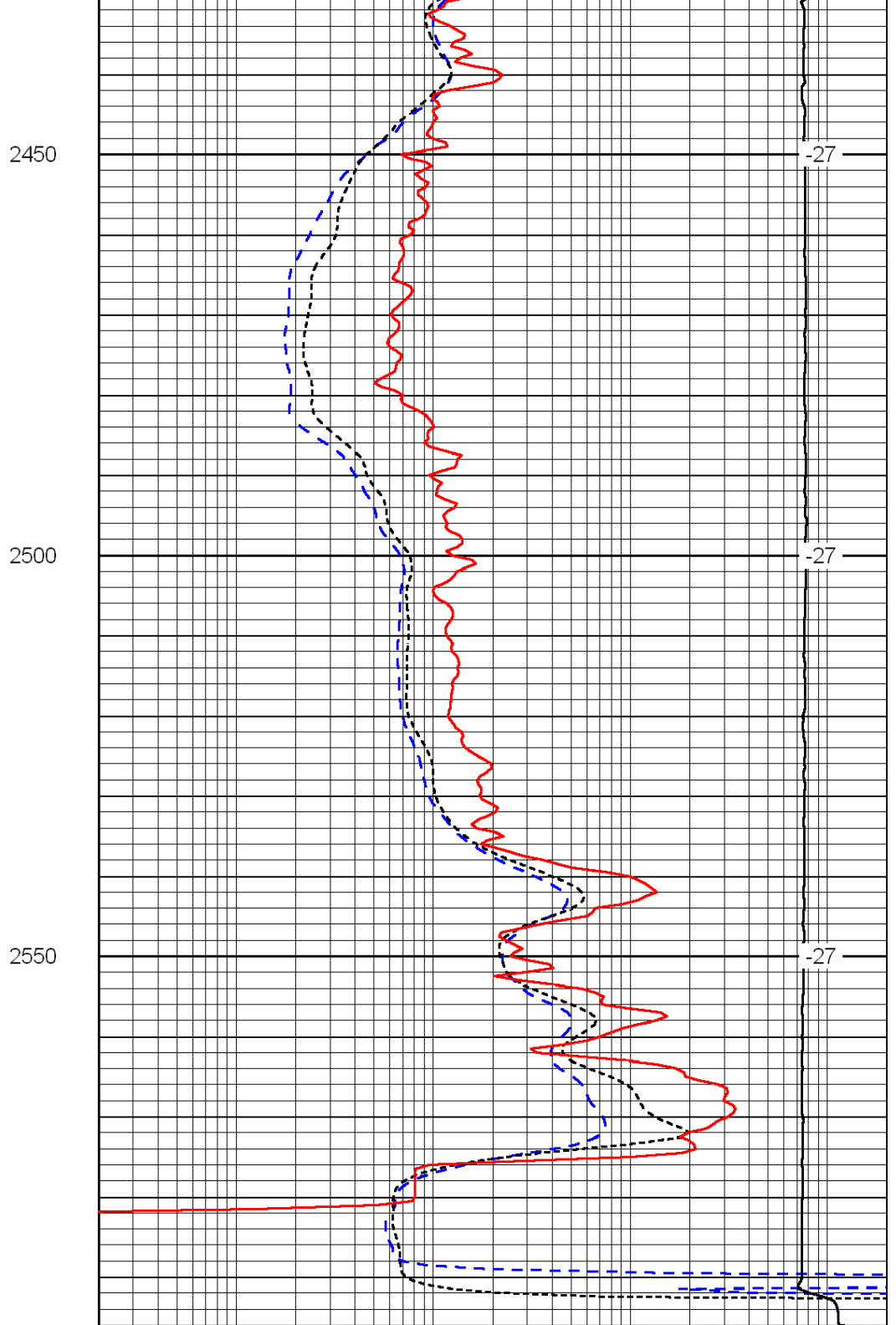
-28

-27

-27



0	Gamma Ray	150
-200	SP (mV)	0
-160	Rxo / Rt	40



0.2	Deep Resistivity	2000
0.2	Medium Resistivity	2000
0.2	Shallow Resistivity	2000
15000	Line Tension	0

LSPD