



MIDWEST SURVEYS
 LOGGING - PERFORATING - CONSULTING SERVICES
 P.O. Box 68, Osawatomie, KS 66064
 913 / 755 - 2128

GAMMA RAY / NEUTRON / CCL

File No.

Company: **Bobcat Oilfield Services, Inc.**

Well: **Anderson No. 3W-13**

Field: **Paola - Rantoul**

County: **Miami**

State: **Kansas**

Location: **660' FSL & 4950' FEL
W/2-SW-SW**

Other Services
Perforate

Sec. 32 Twp. 16S Rge. 22E
 Permanent Datum: GL
 Log Measured From: GL
 Drilling Measured From: GL

Elevation: NA
 K.B. NA
 D.F. NA
 G.L. NA

Date: 14-07-2013

Run Number: One

Depth Driller: 670.0

Depth Logger: 663.2

Bottom Logged Interval: 662.2

Top Log Interval: 20.0

Fluid Level: Fill

Type Fluid: Water

Density / Viscosity: NA

Salinity - PPM Cl: NA

Max. Recorded Temp: NA

Estimated Cement Top: 0.0

Equipment No.: 107

Recorded By: Steve Winkisch

Witnessed By: Bob Eberhart

BORE-HOLE RECORD				CASINGS RECORD			
RUN	BIT	FROM	TO	SIZE	WGT.	FROM	TO
One	8.75"	0.0	20.0	6.25"	15.0 #	0.0	20.0
Two	5.625"	20.0	670.0	2.875"	6.5 #	0.0	665.0

<<< Fold Here >>>

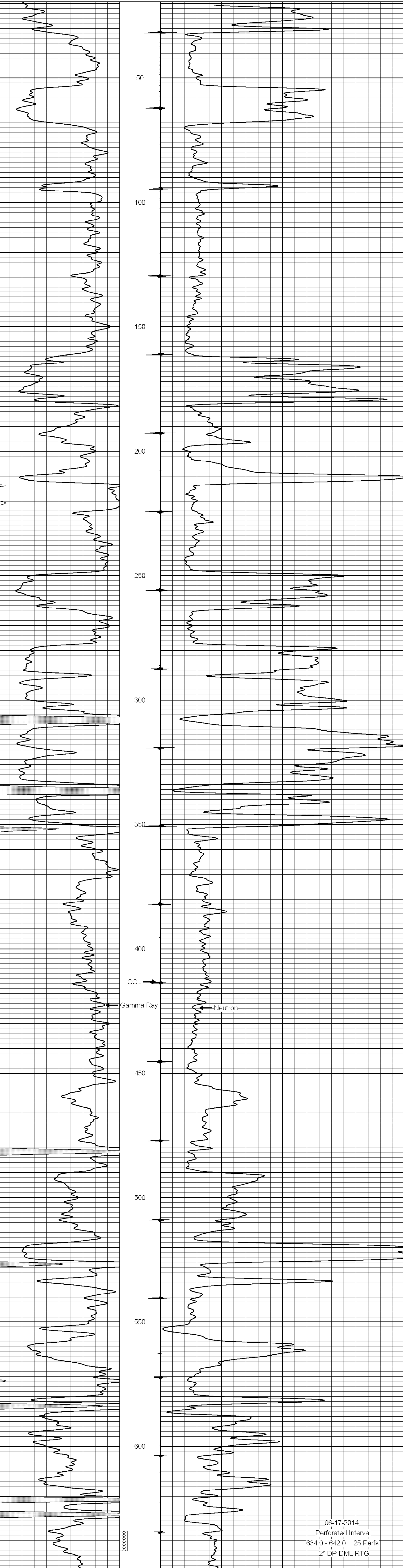
All interpretations are opinions based on inferences from electrical or other measurements and we cannot and do not guarantee the accuracy or correctness of any interpretation, and we shall not, except in the case of gross or willful negligence on our part, be liable or responsible for any loss, costs, damages, or expenses incurred or sustained by anyone resulting from any interpretation made by any of our officers, agents or employees. These interpretations are also subject to our general terms and conditions set out in our current Price Schedule.

Comments

Drilling Contractor :
 Dale Jackson Production Company

Database File: anderson3w-13.db
 Dataset Pathname: pass1a
 Presentation Format: gr-n-ccl
 Dataset Creation: Thu Nov 07 14:41:08 2013
 Charted by: Depth in Feet scaled 1:240

0	Gamma Ray (cps)	150	-1 CCL 1	10	Neutron (cps)	2100
150	Gamma Ray (cps)	300				



06-17-2014
 Perforated Interval
 634.0 - 642.0 25 Perfs
 2" DP DML RTG

0	Gamma Ray (cps)	150	-1 CCL 1	10	Neutron (cps)	2100
150	Gamma Ray (cps)	300				