



# MIDWEST SURVEYS

LOGGING - PERFORATING - CONSULTING SERVICES

P.O. Box 68, Osawatomie, KS 66064

913 / 755 - 2128

## GAMMA RAY / CEMENT BOND / CCL

File No.

Company Haas Petroleum, LLC

Well Bahr No. 19-LH

Field Virgil North

County Woodson State Kansas

Location

4660' FSL & 3030' FEL

C/2-NE-NW

Other Services

API # 15-207-27,520

Sec 9 Twp 21s Rge 14e

Permanent Datum GL Elevation 1223'

Log Measured From GL

Drilling Measured From KB 7' From GL

Elevation KB, 1230' D.F. NA G.L. 1223'

Date 8-24-2010

Run Number One

Depth Driller 3687.0

Depth Logger 2243.8

Bottom Logged Interval 2240.8

Top Log Interval 200.0

Fluid Level Full

Type Fluid Water

Density / Viscosity NA

Salinity - PPM Cl NA

Max Recorded Temp NA

Estimated Cement Top 1520.0

Equipment No. Location 107 Osawatomie

Recorded By Steve Windisch

Witnessed By Mark Haas

### BORE-HOLE RECORD

### CASING RECORD

Run No.	BIT	FROM	TO	SIZE	WGT.	FROM	TO
One	12.25"	0.0	150.0	8.625"		0.0	150.0
Two	7.875"	105.0	3687.0	5.50"		0.0	2254.0

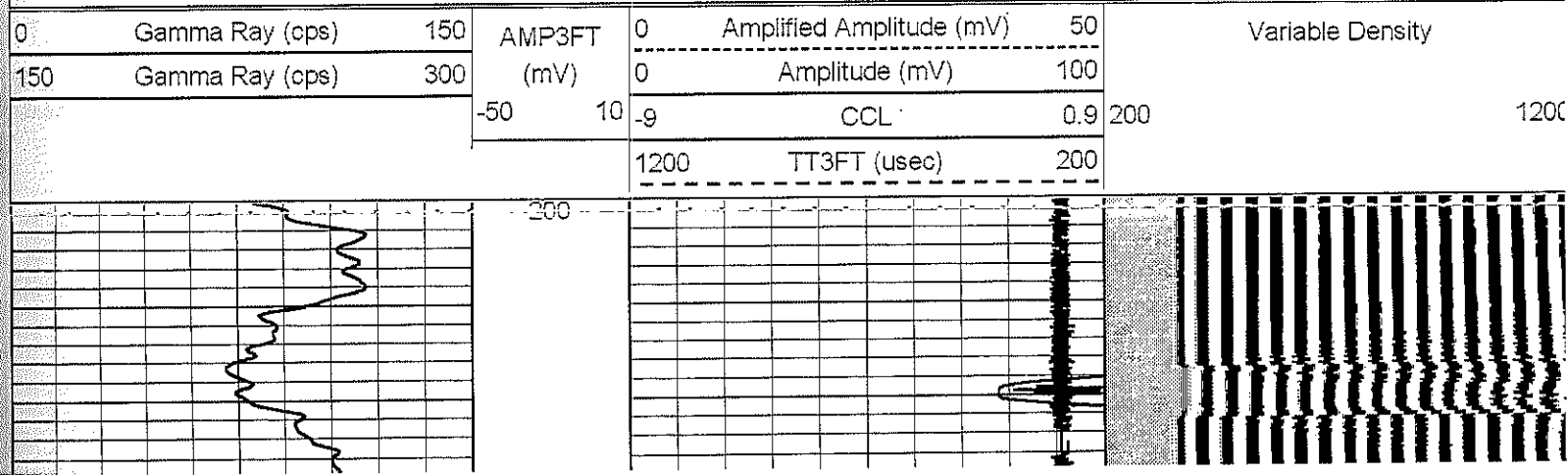
<<< Fold Here >>>

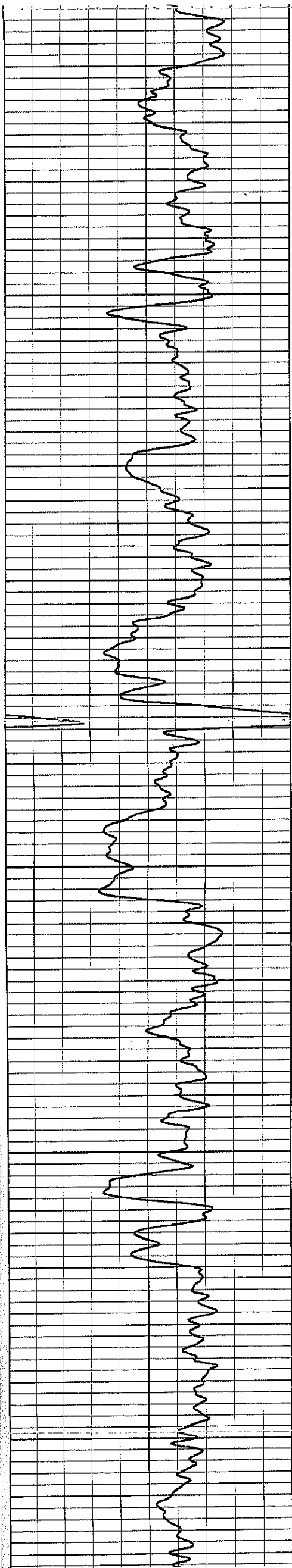
All interpretations are opinions based on inferences from electrical or other measurements and we cannot and do not guarantee the accuracy or correctness of any interpretation, and we shall not, except in the case of gross or willful negligence on our part, be liable or responsible for any loss, costs, damages, or expenses incurred or sustained by anyone resulting from any interpretation made by any of our officers, agents or employees. These interpretations are also subject to our general terms and conditions set out in our current Price Schedule.

### Comments

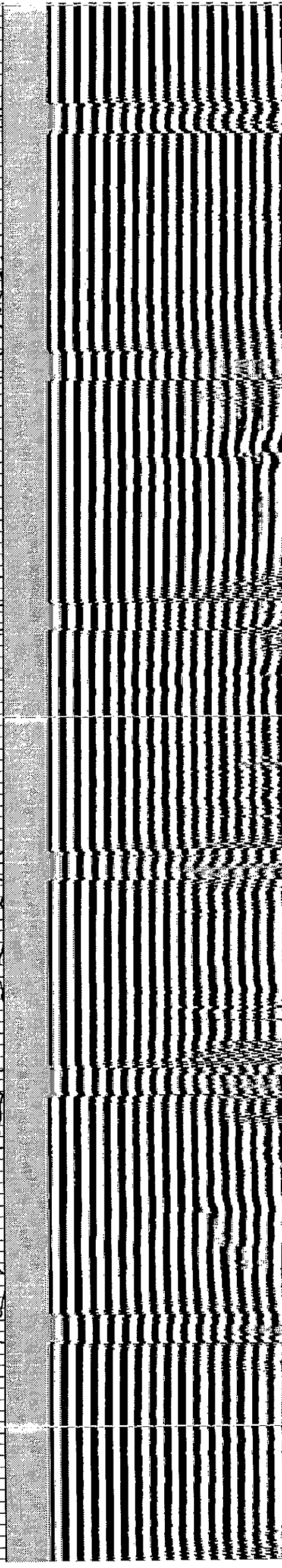
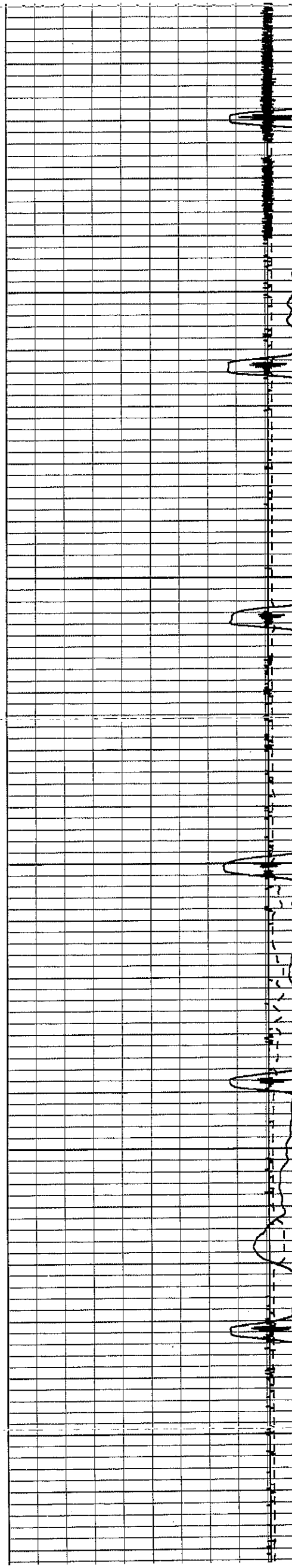
Drilling Contractor :  
Skyy Drilling, LLC

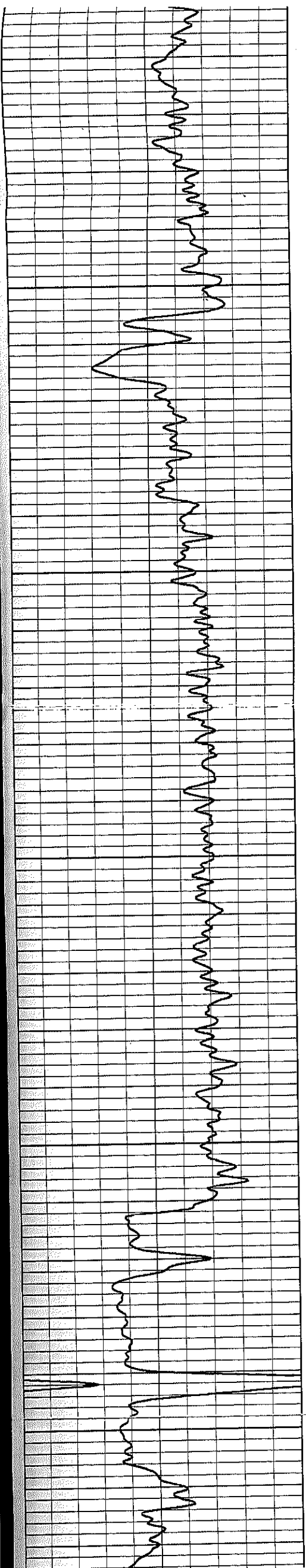
Database File: bahr19lh.db  
 Dataset Pathname: pass1  
 Presentation Format: tekco-gr  
 Dataset Creation: Tue Aug 24 14:44:52 2010 by Log Std Casedhole 07122  
 Charted by: Depth in Feet scaled 1:240





200  
250  
300  
350  
400  
450





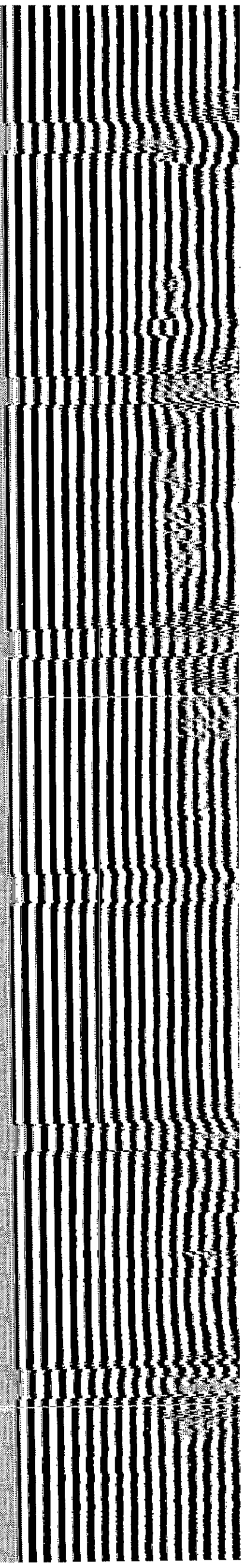
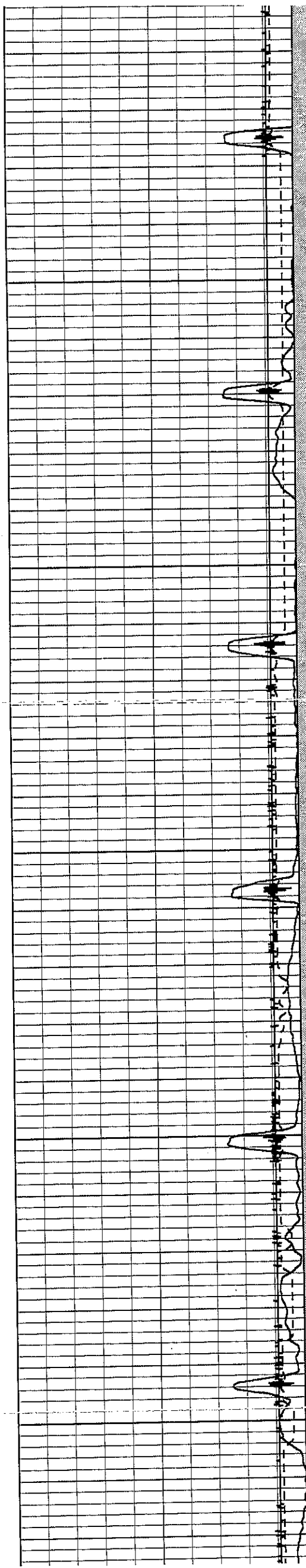
500

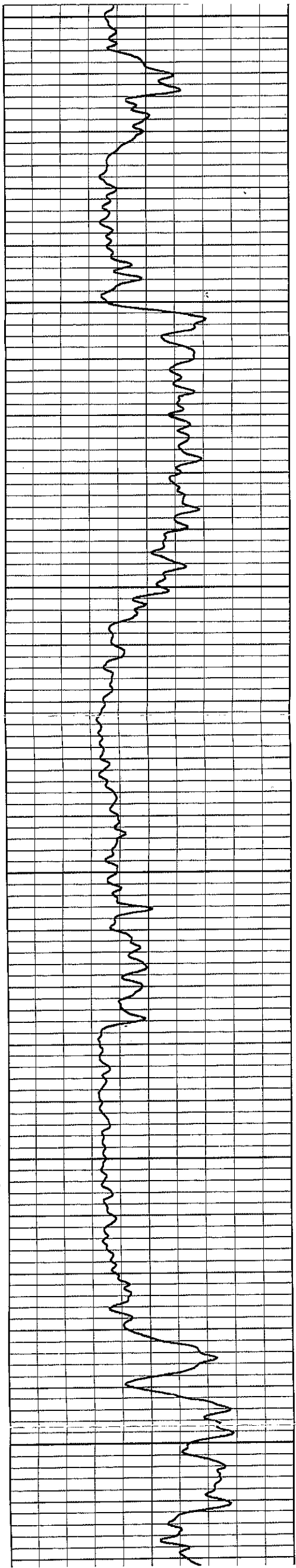
550

600

650

700





700

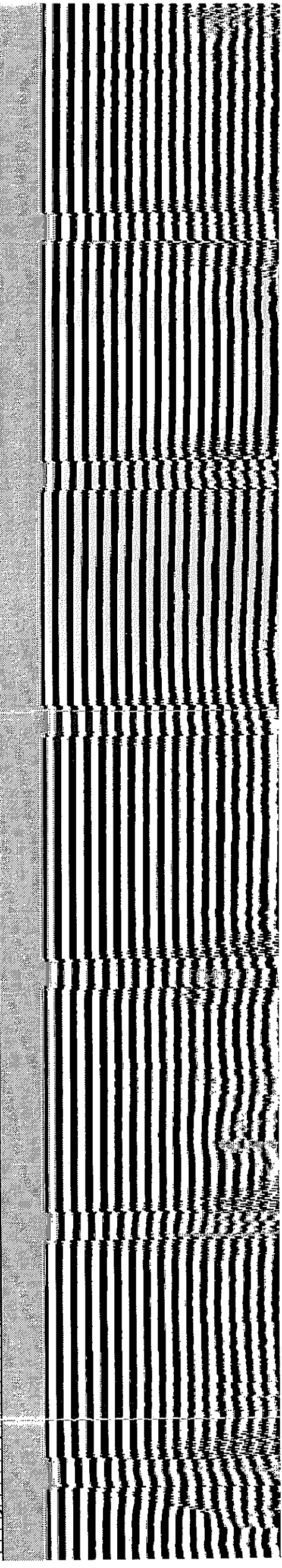
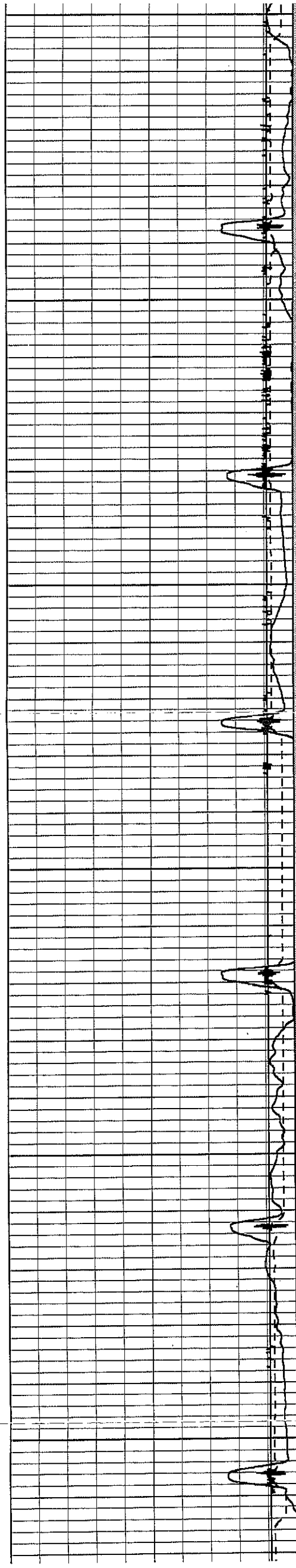
750

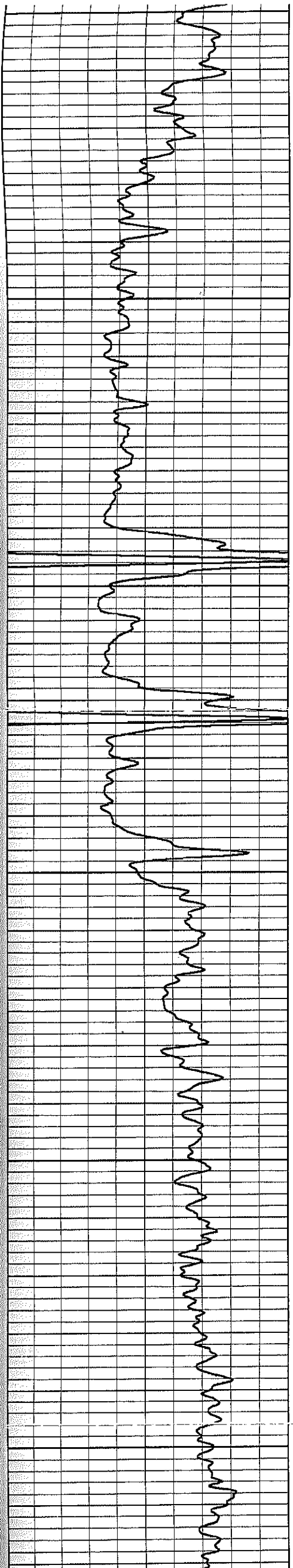
800

850

900

950





950

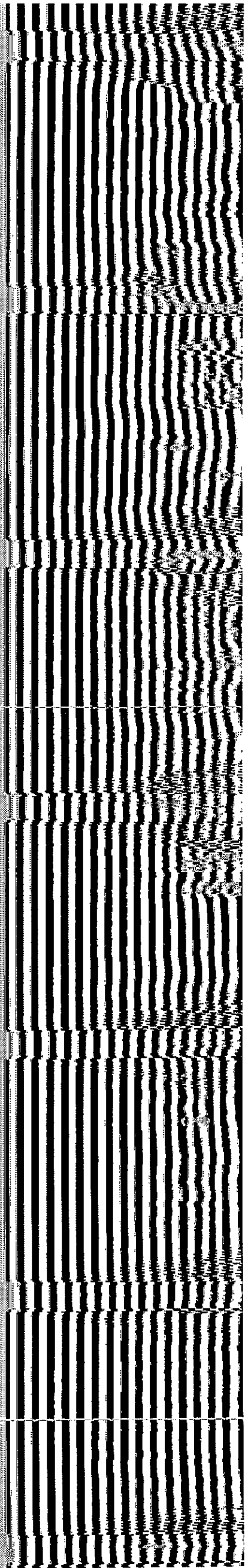
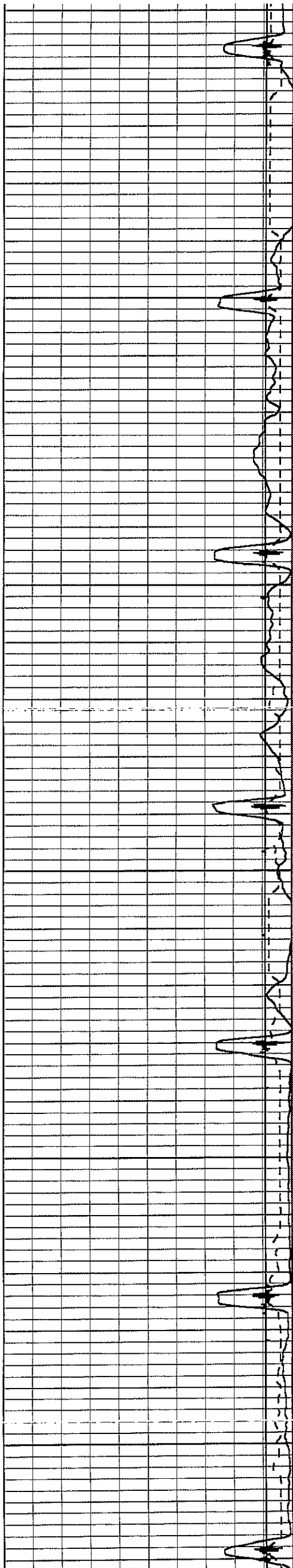
1000

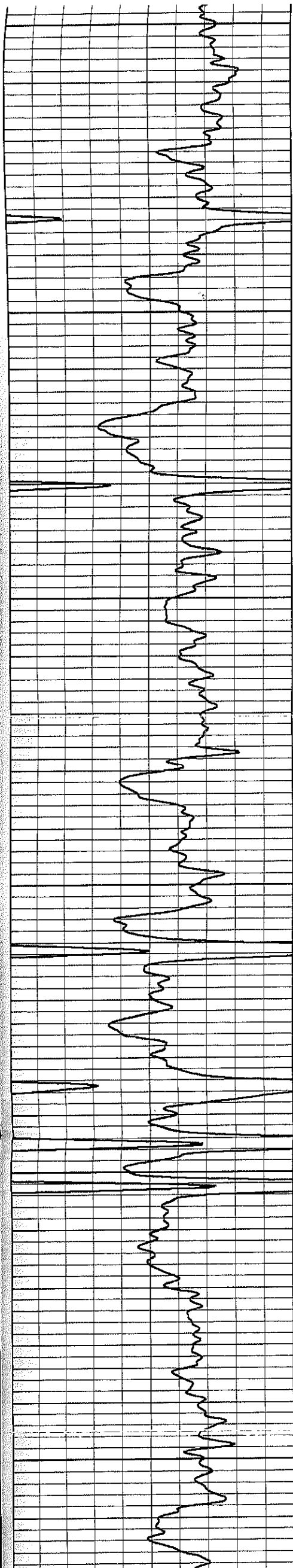
1050

1100

1150

1200





1200

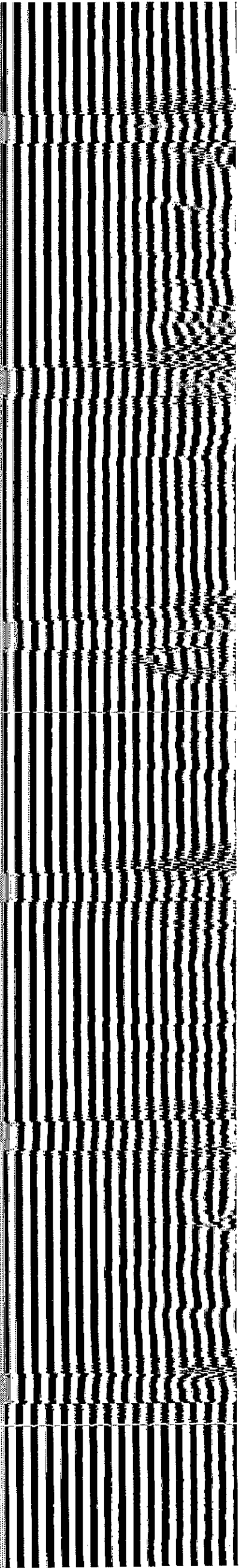
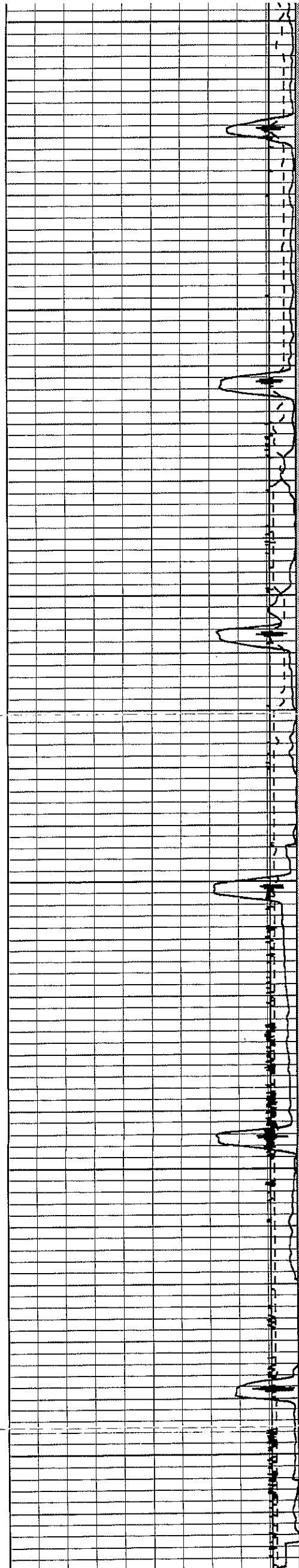
1250

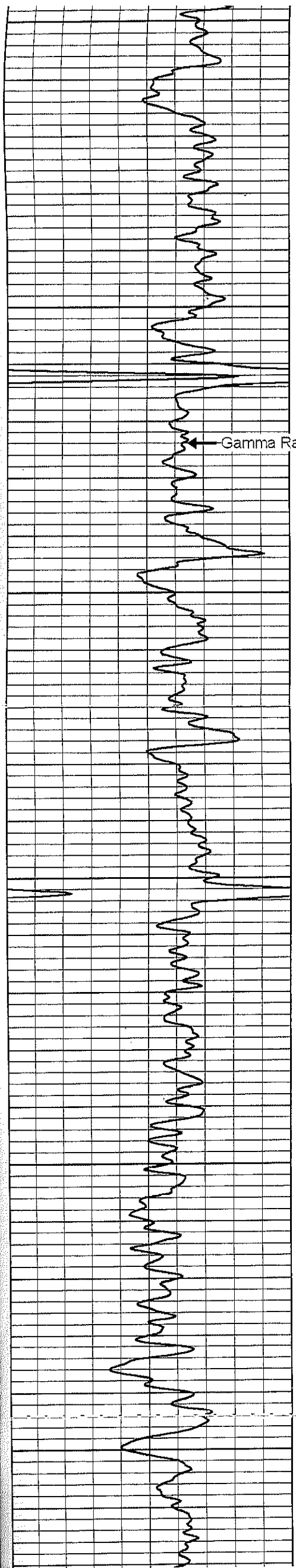
1300

1350

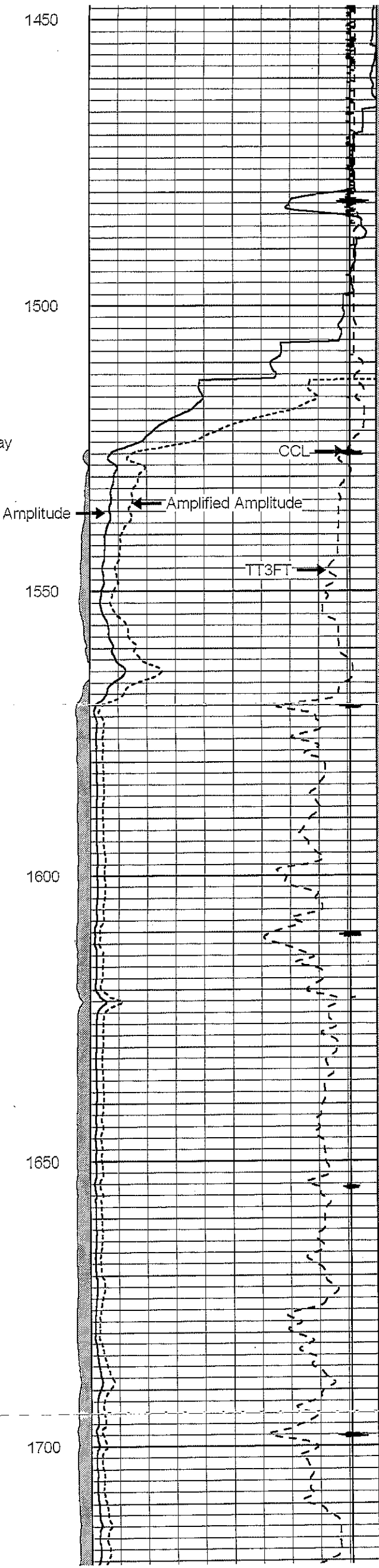
1400

1450





Gamma Ray

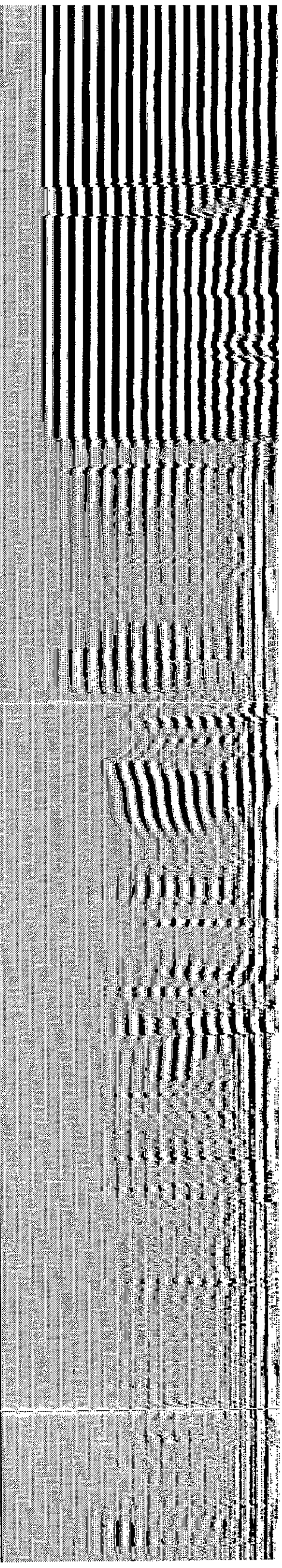


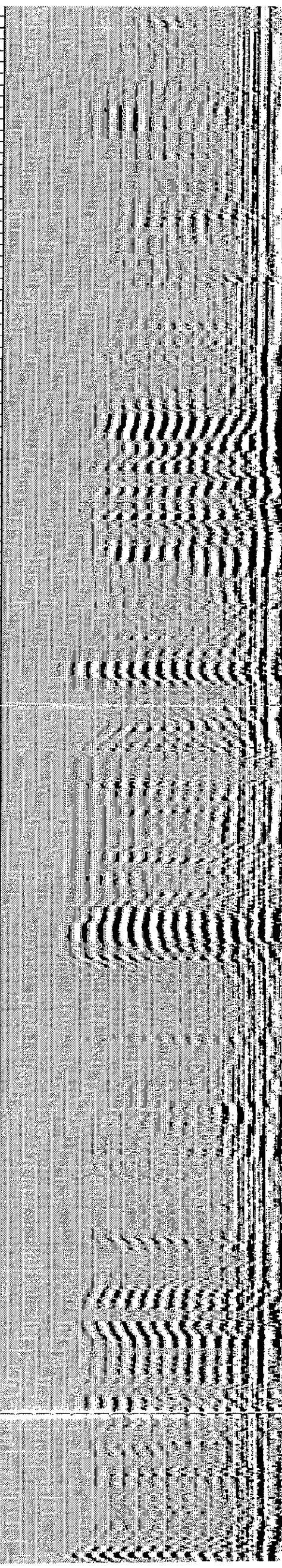
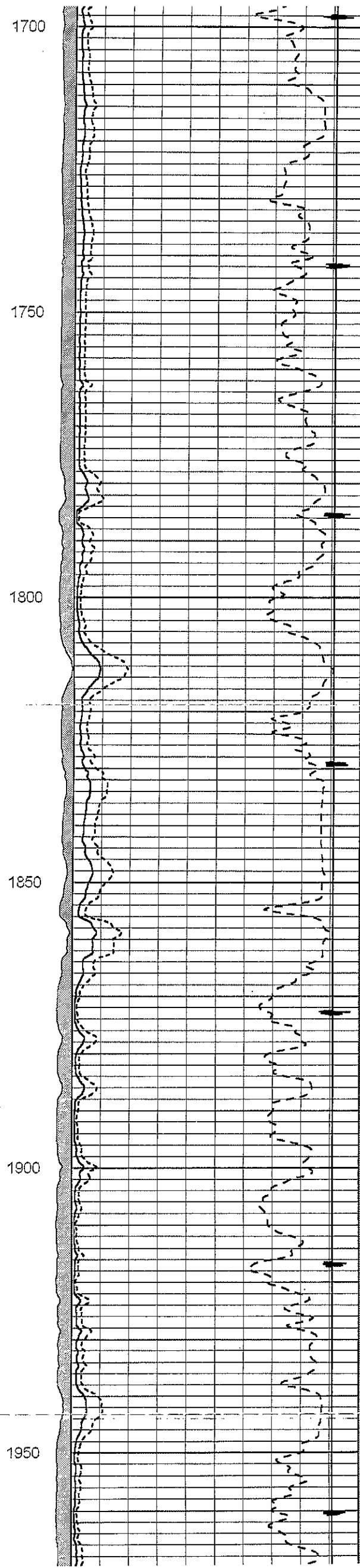
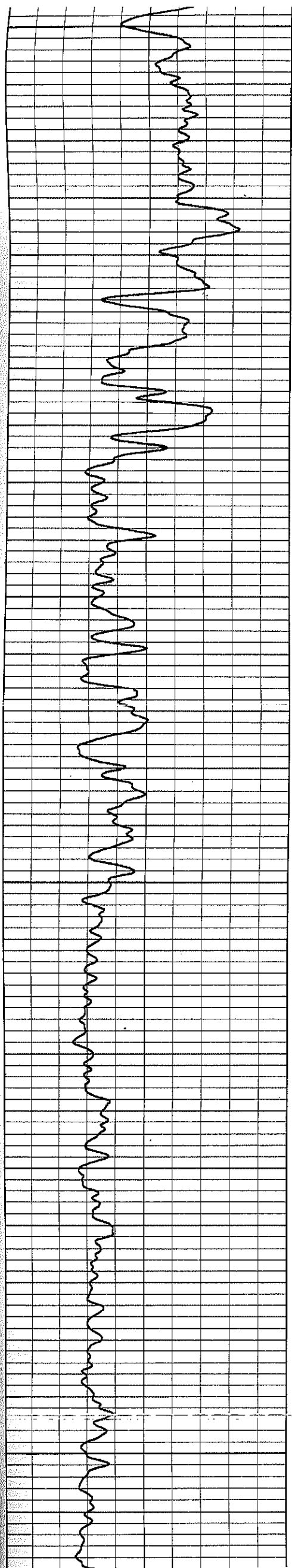
Amplitude

Amplified Amplitude

CCL

TT3FT



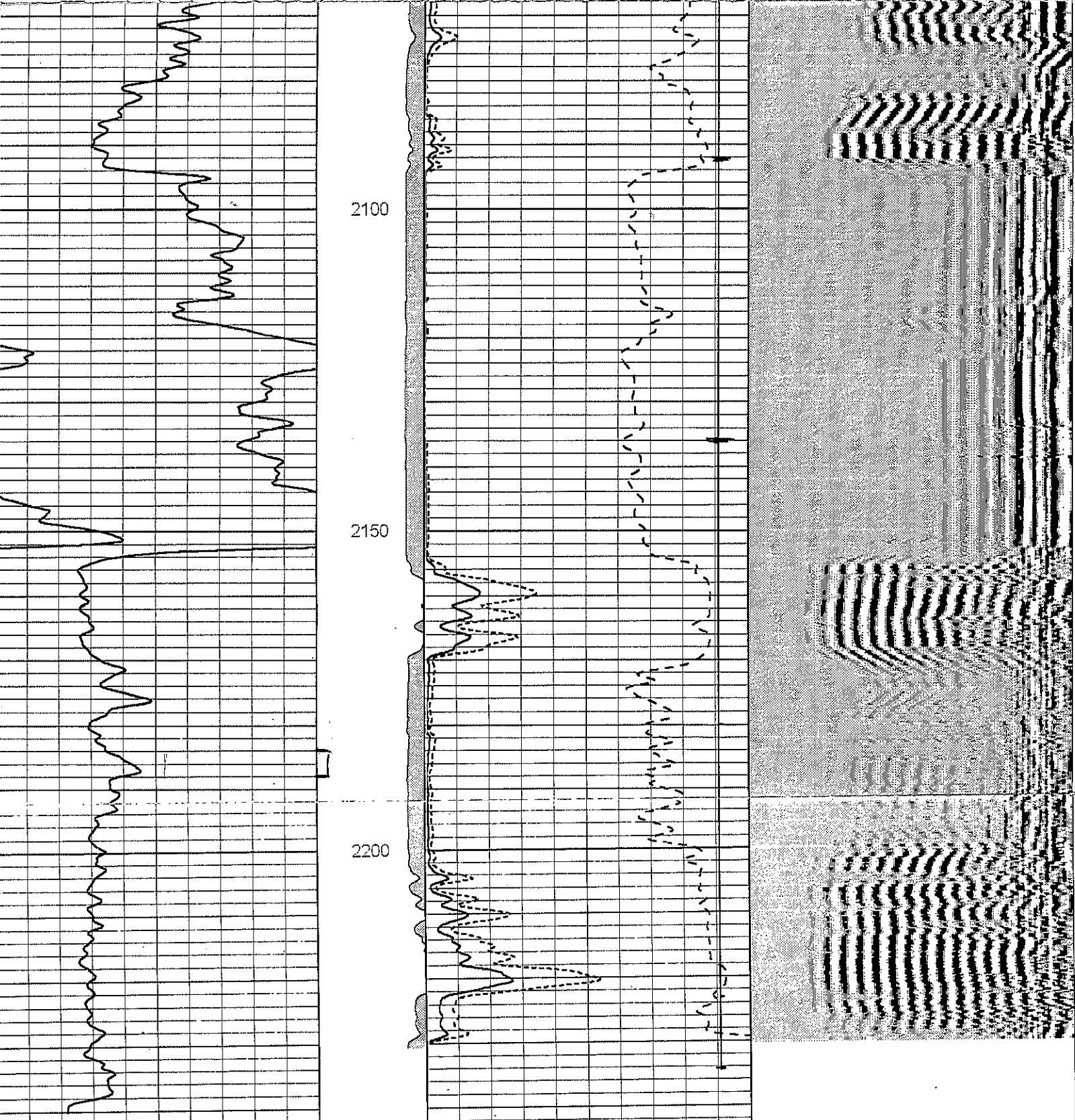


S  
Other Services

Elevation  
S.B. 1230'  
I.F. NA  
I.L. 1223'

TO  
150.0  
2254.0

<< Fold Here >>



0	Gamma Ray (cps)	150	AMP3FT	0	Amplified Amplitude (mV)	50	Variable Density	200	1200
150	Gamma Ray (cps)	300	(mV)	0	Amplitude (mV)	100			
			-50	10	CCL	0.9			
					TT3FT (usec)	200			