



**GAMMA RAY  
NEUTRON  
CEMENT BOND  
COMPLETION LOG**

**KANSAS PRODUCTION COMPANY**

Company: KANSAS PRODUCTION COMPANY  
Well: DEARMOND #W-10  
Field: PERU-SEDAN  
County: CHAUTAUQUA  
State: KANSAS

Location: 1457 FSL & 4073 FEL  
SE/WW/NE/SW  
API #: 15-09-27222-00-00  
Other Services:

Well: DEARMOND #W-10  
Field: PERU-SEDAN  
County: CHAUTAUQUA  
State: KANSAS

Permanent Datum: SEC 15 TWP 34S RGE 12E  
Log Measured From: GL  
Drilling Measured From: GL  
Elevation: 855 FST  
K.B. Elevation: 855 FST  
D.F. Elevation: 855 FST  
G.L. Elevation: 855 FST

Date: 12-5-12  
Run Number: 1 NW  
Depth Diller: 1022.4  
Depth Logger: 1022.4  
Top Log Interval: 0  
Bottom Logged Interval: 1022.4  
Fluid Level: DRY

Type Fluid: 4.5" @ TD @ @  
Production Casing: 4.5" @ TD @ @  
Max. Recorded Temp: @  
Estimated Cement Top: @  
Calculated Cement Top: @  
Amount & Type Cement: @  
Dilling Comarator: 109  
Equipment Number: 109  
Location: SANBORN, G  
Recorded By: M.CANN, M.  
Witnessed By:

<<< Fold Here >>>

All interpretations are based on inferences from electrical or other measurements and we cannot and do not guarantee the accuracy or correctness of any interpretation, and we shall not, except in the case of gross or willful negligence on our part, be liable or responsible for any loss, costs, damages, or expenses incurred or sustained by anyone resulting from any interpretation made by any of our officers, agents or employees. These interpretations are also subject to our general terms and conditions set out in our current Price Schedule.

**Comments**

NOTE: CASING NOT CEMENTED

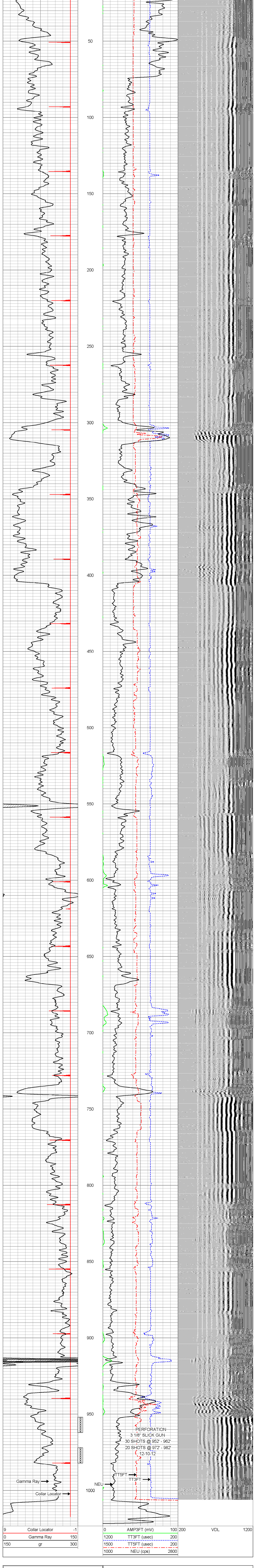
THANK YOU

Sensor	Offset (ft)	Schematic	Description	Len (ft)	OD (in)	Wt (lb)
GR	7.59		GR-TITAN 169 (TIT169_001) Titan 1 11/16" Gamma Ray	4.75	1.69	20.00
CCL	5.05		CCL-TITAN 169 (TIT169) Titan 1 11/16" Logging CCL	1.83	1.69	7.50
NEU	0.63		NEU-TITAN (TIT801) TITAN 1 11/16" Neutron	4.33	1.69	25.00

Dataset: dearmond #w-10.db; field/well/run1/pass1  
Total Length: 10.92 ft  
Total Weight: 52.50 lb  
O.D.: 1.69 in

Database File: g:\dearmond #w-10.db  
Dataset Pathname: pass1.gr  
Presentation Format: scbl\_gr  
Dataset Creation: Mon Dec 10 16:21:16 2012  
Charted by:

9	Collar Locator	-1	0	AMP3FT (mV)	100	200	VDL	1200
0	Gamma Ray	150	1200	TT3FT (usec)	200			
150	gr	300	1500	TT5FT (usec)	200			
			1000	NEU (cps)	2800			



9	Collar Locator	-1	0	AMP3FT (mV)	100	200	VDL	1200
0	Gamma Ray	150	1200	TT3FT (usec)	200			
150	gr	300	1500	TT5FT (usec)	200			
			1000	NEU (cps)	2800			



Company: KANSAS PRODUCTION COMPANY  
Well: DEARMOND #W-10  
Field: PERU-SEDAN  
County: CHAUTAUQUA SEC. 15 TWP. 34S RGE 12E  
State: KANSAS  
Date: 12-5-12