



Pioneer Energy Services

Microresistivity Log

API No.	15-009-25767-00-00		
Company	Kirby Krier Oil, Inc.		
Well	Rehme North #1		
Field	Fiest		
County	Barton	State	Kansas
Location	330' FSL & 1980' FEL		
Sec:	29	Twp:	18S Rge: 11W
Permanent Datum	Ground Level	Elevation	1829
Log Measured From	Kelly Bushing	7 Ft. Above Perm. Datum	
Drilling Measured From	Kelly Bushing		
Date	10/28/2012		
Run Number	Two		
Depth Driller	3506		
Depth Logger	3507		
Bottom Logged Interval	3506		
Top Log Interval	2800		
Casing Driller	8.625 @ 278		
Casing Logger	276		
Bit Size	7.875		
Type Fluid in Hole	Chemical		
Salinity, ppm CL	2500		
Density / Viscosity	9.2	51	
pH / Fluid Loss	8.5	8.8	
Source of Sample	Flowline		
Rm @ Meas. Temp	0.75 @	46	
Rmf @ Meas. Temp	0.56 @	46	
Rmc @ Meas. Temp	1.01 @	46	
Source of Rmf / Rmc	Charts		
Rm @ BHT	0.31 @	113	
Operating Rig Time	4 Hours		
Max Rec. Temp. F	113		
Equipment Number	91		
Location	Hays		
Recorded By	D. Schmidt		
Witnessed By	Kurt Talbott		

Other Services
CNL/CDL
DIL
Elevation
K.B. 1836
D.F. 1829
G.L. 1829

<<< Fold Here >>>

All interpretations are opinions based on inferences from electrical or other measurements and we cannot and do not guarantee the accuracy or correctness of any interpretation, and we shall not, except in the case of gross or willful negligence on our part, be liable or responsible for any loss, costs, damages, or expenses incurred or sustained by anyone resulting from any interpretation made by any of our officers, agents or employees. These interpretations are also subject to our general terms and conditions set out in our current Price Schedule.

Comments

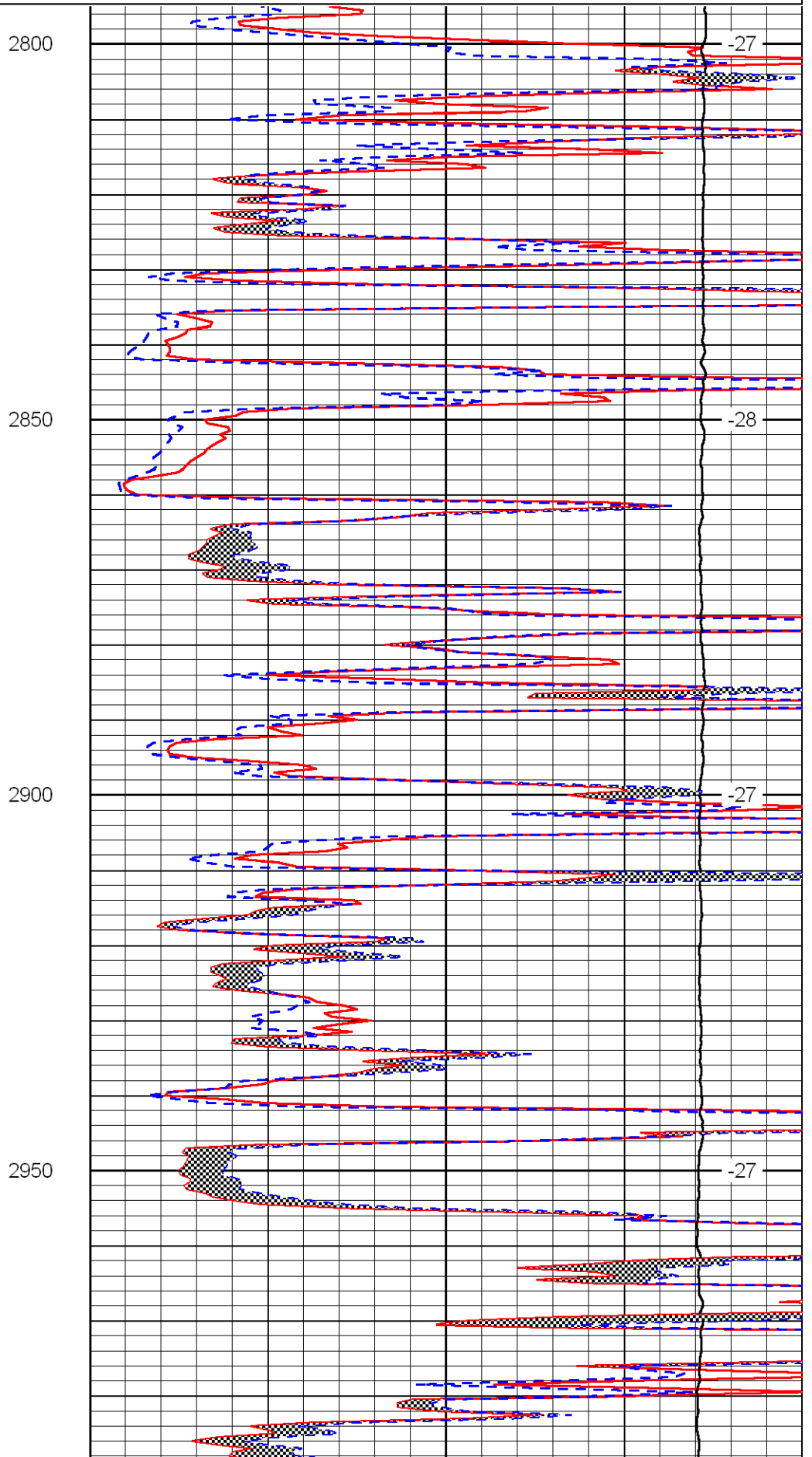
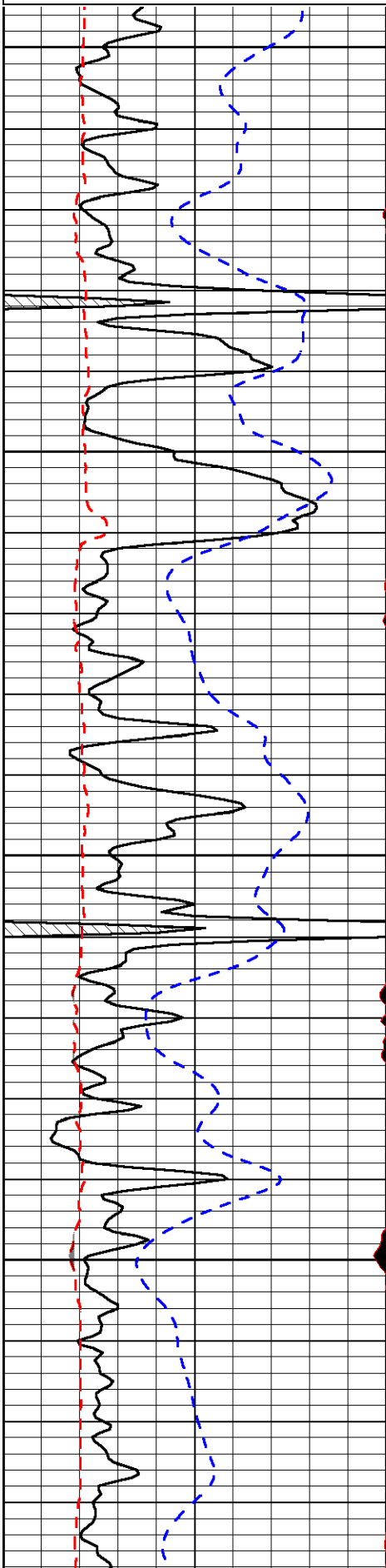
Thank you for using Log-Tech, Inc.
(785) 625-3858

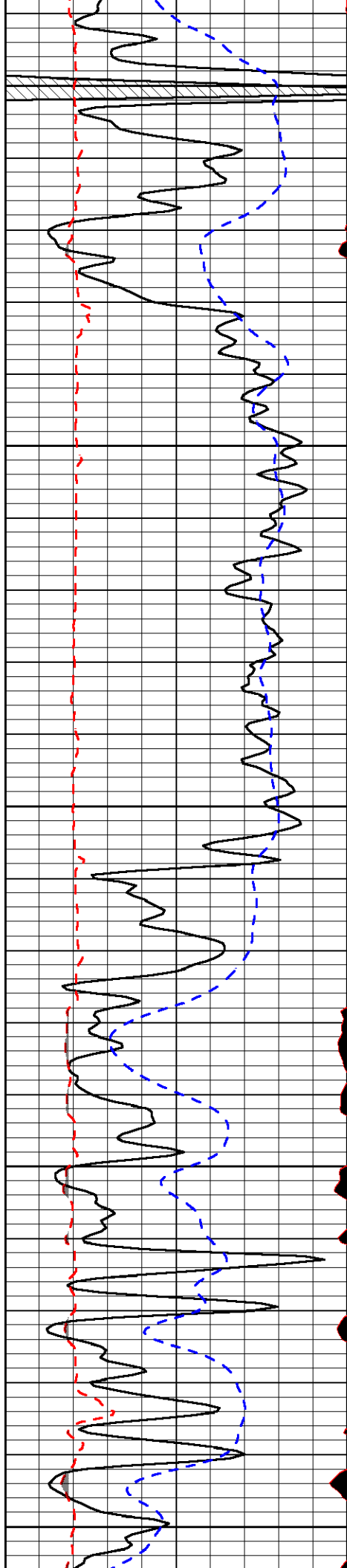
Ellinwood,
7 1/2 North on 110 Rd to 70 Rd, 1/4 East,
South into

Database File: kirby_102812hd.db
Dataset Pathname: dil/kirstack
Presentation Format: micro
Dataset Creation: Sun Oct 28 06:46:57 2012
Charted by: Depth in Feet scaled 1:240

0	Gamma Ray	150
6	MCAL (GAPI)	16
2.875	Mud Cake (GAPI)	7.875
-200	SP	0

0	Micro Inverse 1 X 1	40
0	Micro Normal 2"	40
10000	Line Weight	0
		LSPD





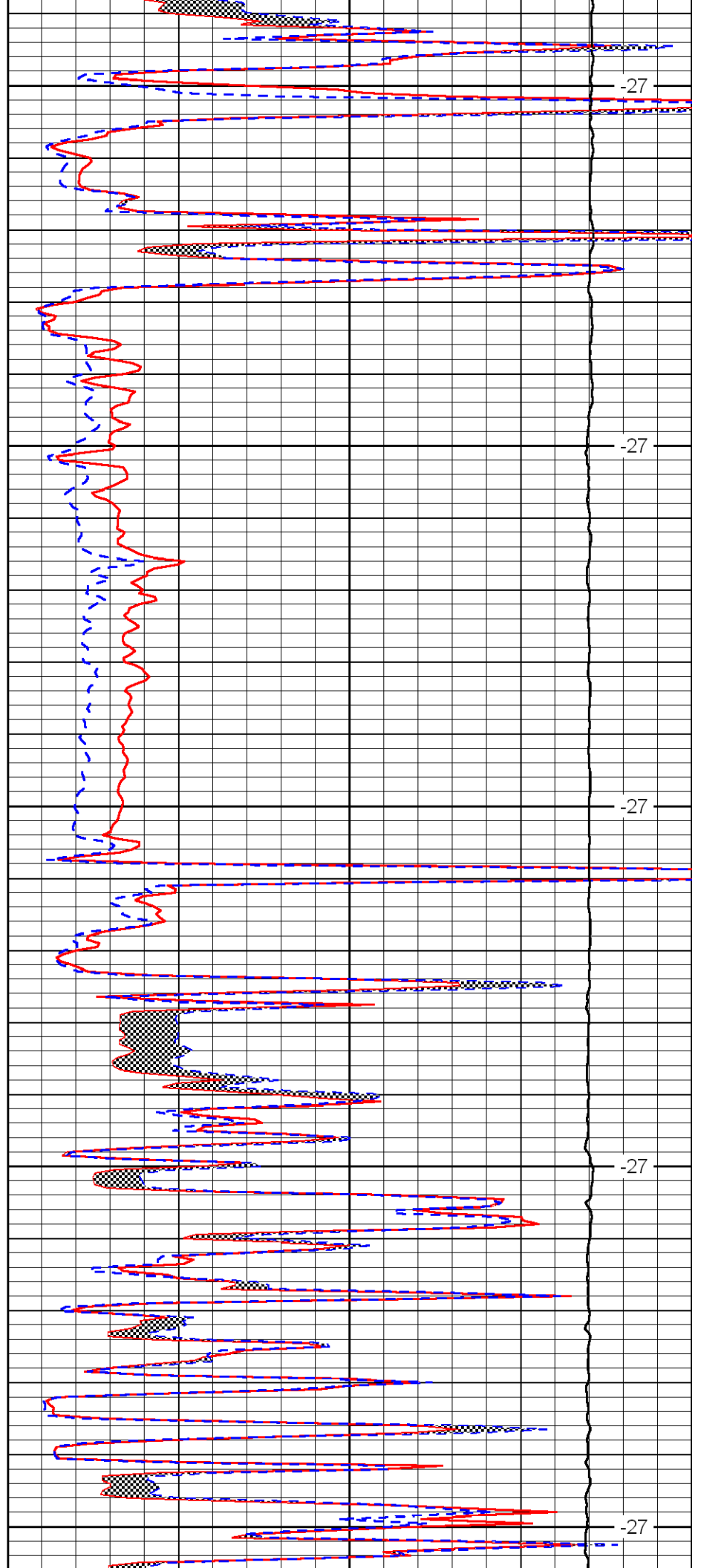
3000

3050

3100

3150

3200



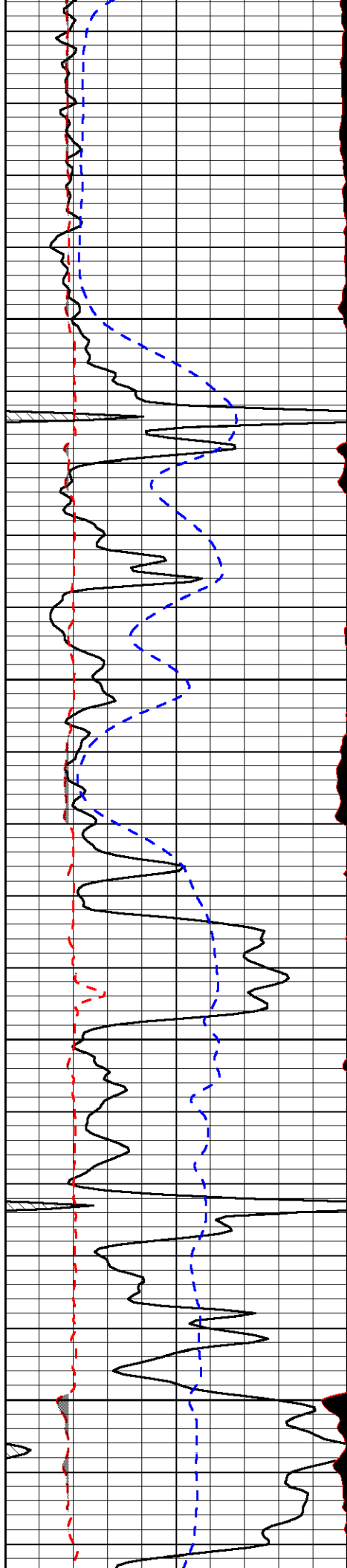
-27

-27

-27

-27

-27

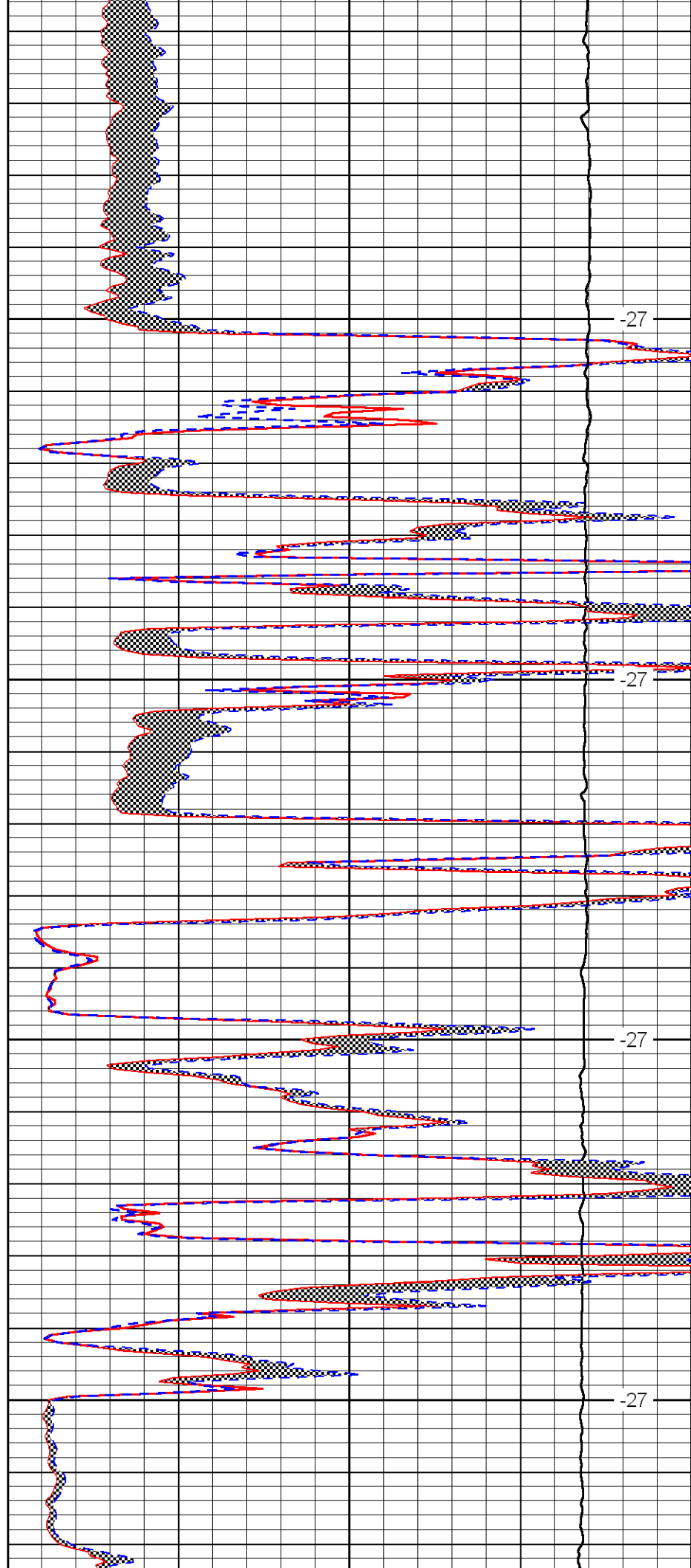


3250

3300

3350

3400

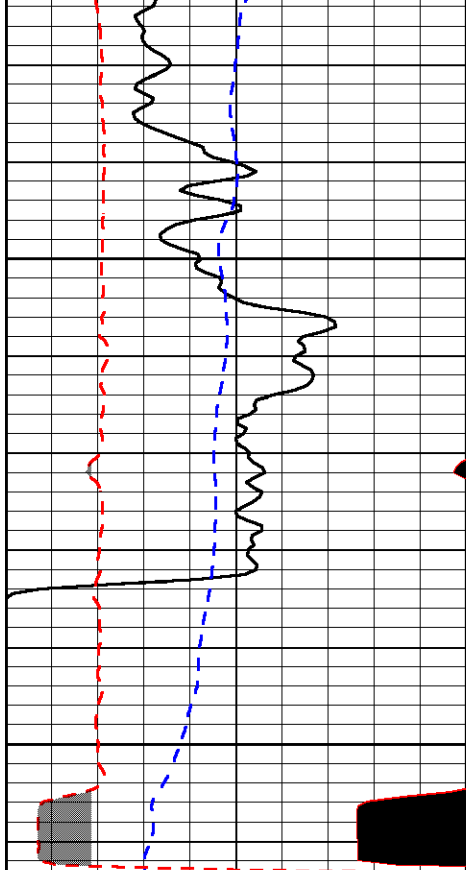


-27

-27

-27

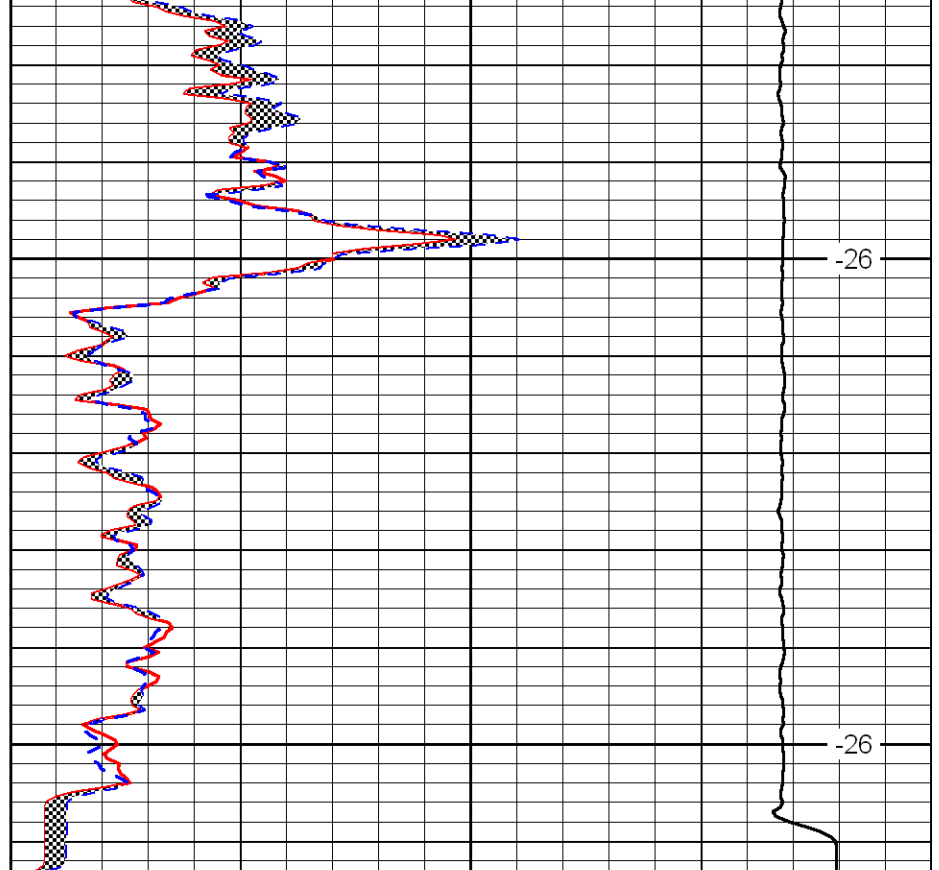
-27



0	Gamma Ray	150
6	MCAL (GAPI)	16
2.875	Mud Cake (GAPI)	7.875
-200	SP	0

3450

3500



0	Micro Inverse 1 X 1	40
0	Micro Normal 2''	40
10000	Line Weight	0

LSPD