



Pioneer Energy Services

Dual Compensated Porosity Log

API No.	15-009-25767-00-00		
Company	Kirby Krier Oil, Inc.		
Well	Rehme North #1		
Field	Fiest		
County	Barton		
Location	330' FSL & 1980' FEL		
State	Kansas		
Sec: 29	Twp: 18S	Rge: 11W	
Permanent Datum	Ground Level	Elevation 1829	
Log Measured From	Kelly Bushing	7	Ft. Above Perm. Datum
Drilling Measured From	Kelly Bushing		
Date	10/28/2012	Elevation K.B. 1836 D.F. 1829 G.L. 1829	
Run Number	One		
Type Log	CNL / CDL		
Depth Driller	3506		
Depth Logger	3507		
Bottom Logged Interval	3486		
Top Logged Interval	2800		
Type Fluid In Hole	Chemical		
Salinity, PPM CL	2500		
Density	9.2		
Level	Full		
Max. Rec. Temp. F	113		
Operating Rig Time	4 Hours		
Equipment -- Location	91 Hays		
Recorded By	D. Schmidt		
Witnessed By	Kurt Talbot		

Borehole Record		Casing Record				
Run No	Bit From	To	Size	Wgt.	From	To
One	12.25	00	278	8.625	23#	00
Two	7.875	278	TD			278

<<< Fold Here >>>

All interpretations are opinions based on inferences from electrical or other measurements and we cannot and do not guarantee the accuracy or correctness of any interpretation, and we shall not, except in the case of gross or willful negligence on our part, be liable or responsible for any loss, costs, damages, or expenses incurred or sustained by anyone resulting from any interpretation made by any of our officers, agents or employees. These interpretations are also subject to our general terms and conditions set out in our current Price Schedule.

Comments

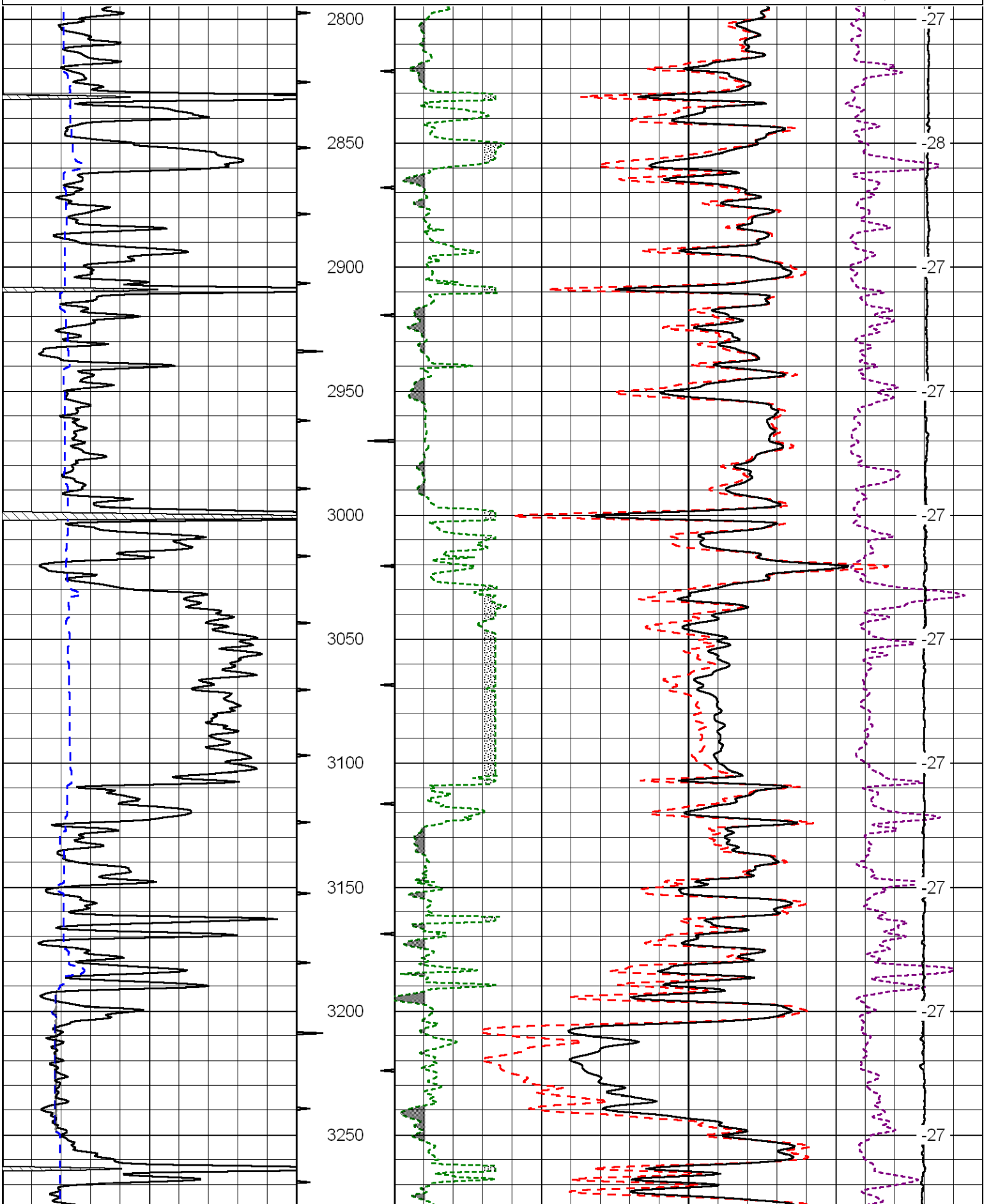
Thank you for using Log-Tech, Inc.
(785) 625-3858

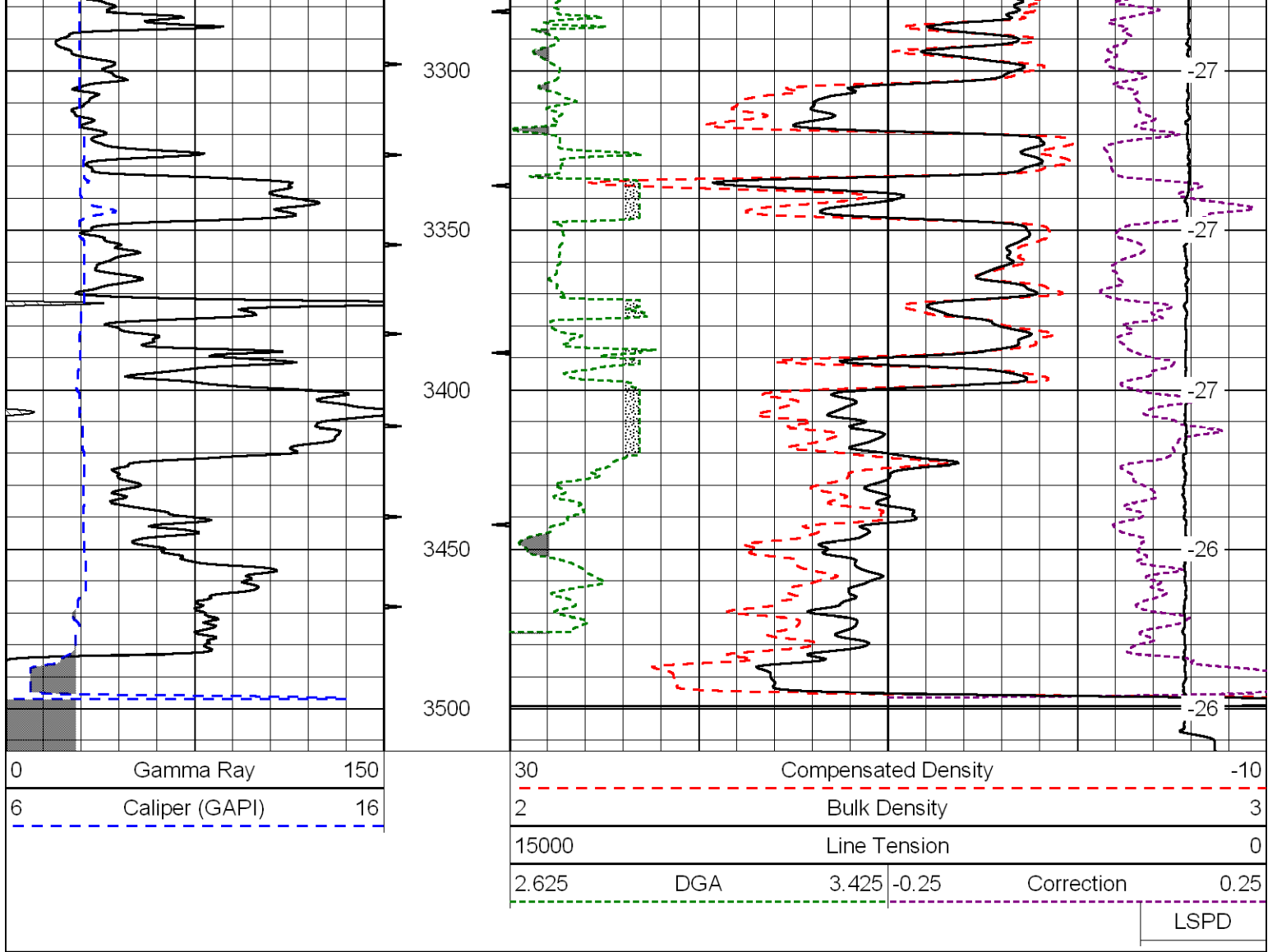
Ellinwood,
7 1/2 North on 110 Rd to 70 Rd, 1/4 East,
South into

Database File: kirby_102812hd.db
 Dataset Pathname: dil/kirstack
 Presentation Format: cdl
 Dataset Creation: Sun Oct 28 06:46:57 2012
 Charted by: Depth in Feet scaled 1:600

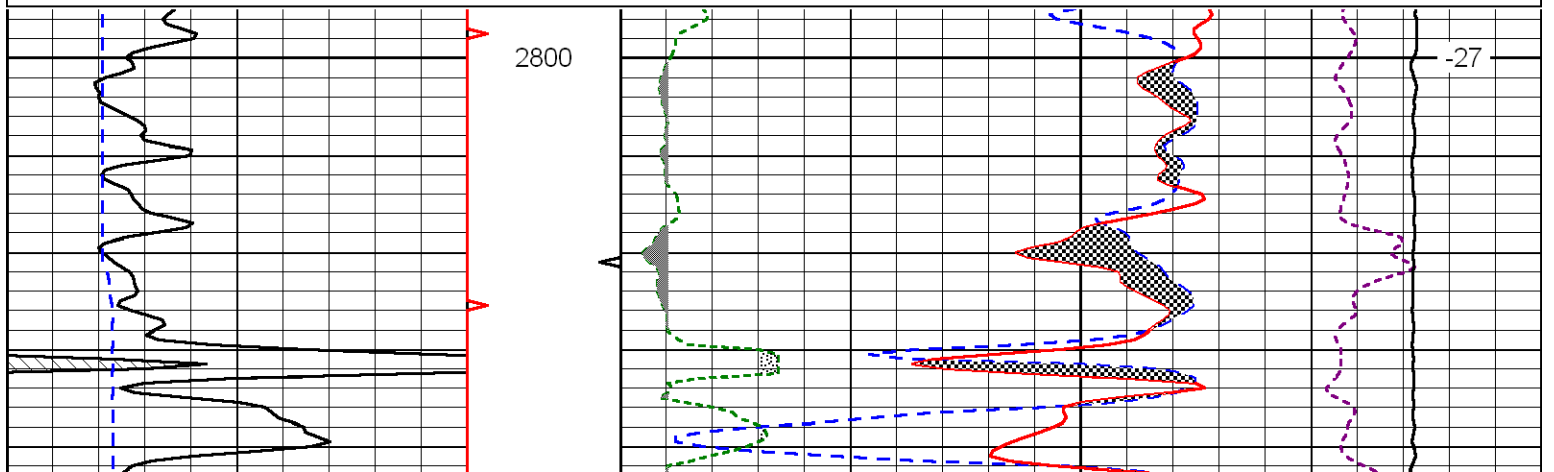
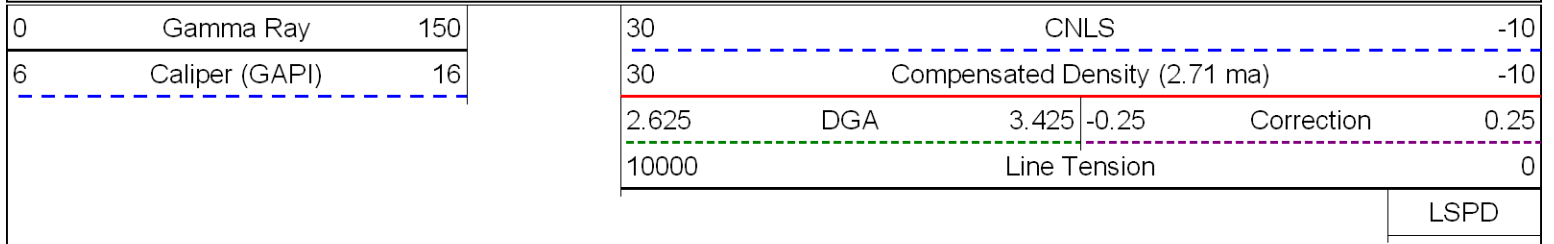
0	Gamma Ray	150
6	Caliper (GAPI)	16

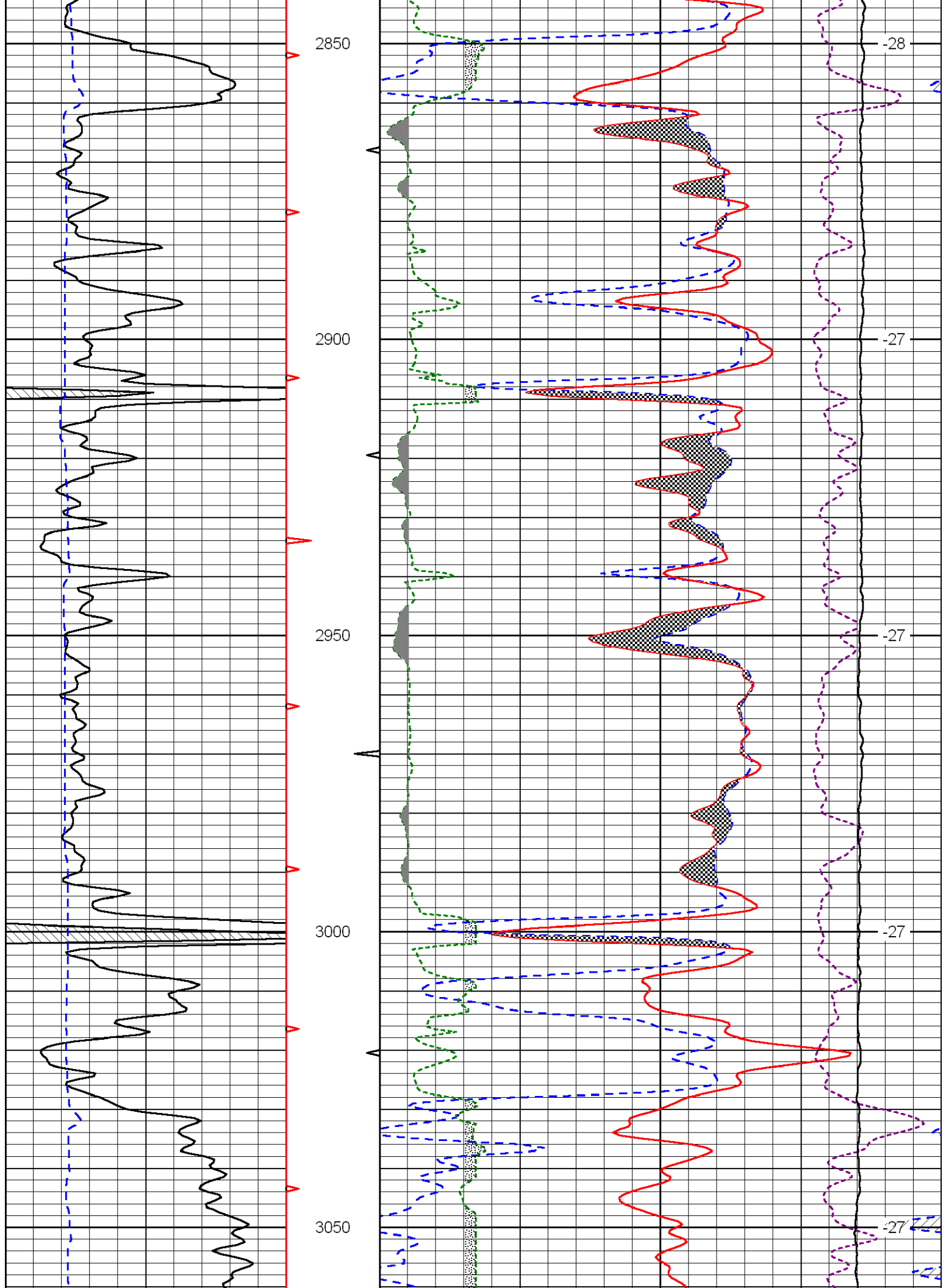
30	Compensated Density		-10
2	Bulk Density		3
15000	Line Tension		0
2.625	DGA	3.425	-0.25
Correction			0.25
LSPD			

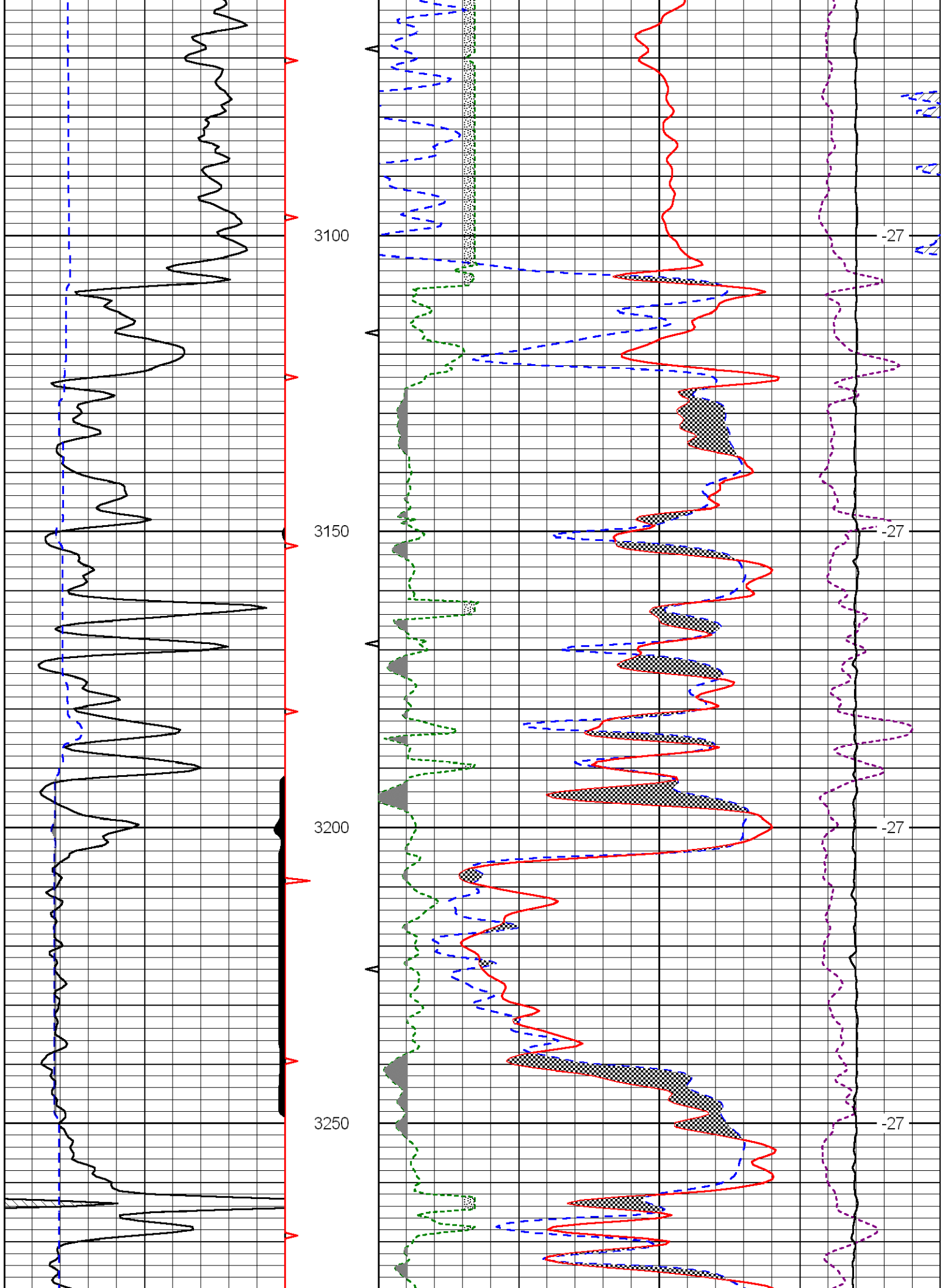


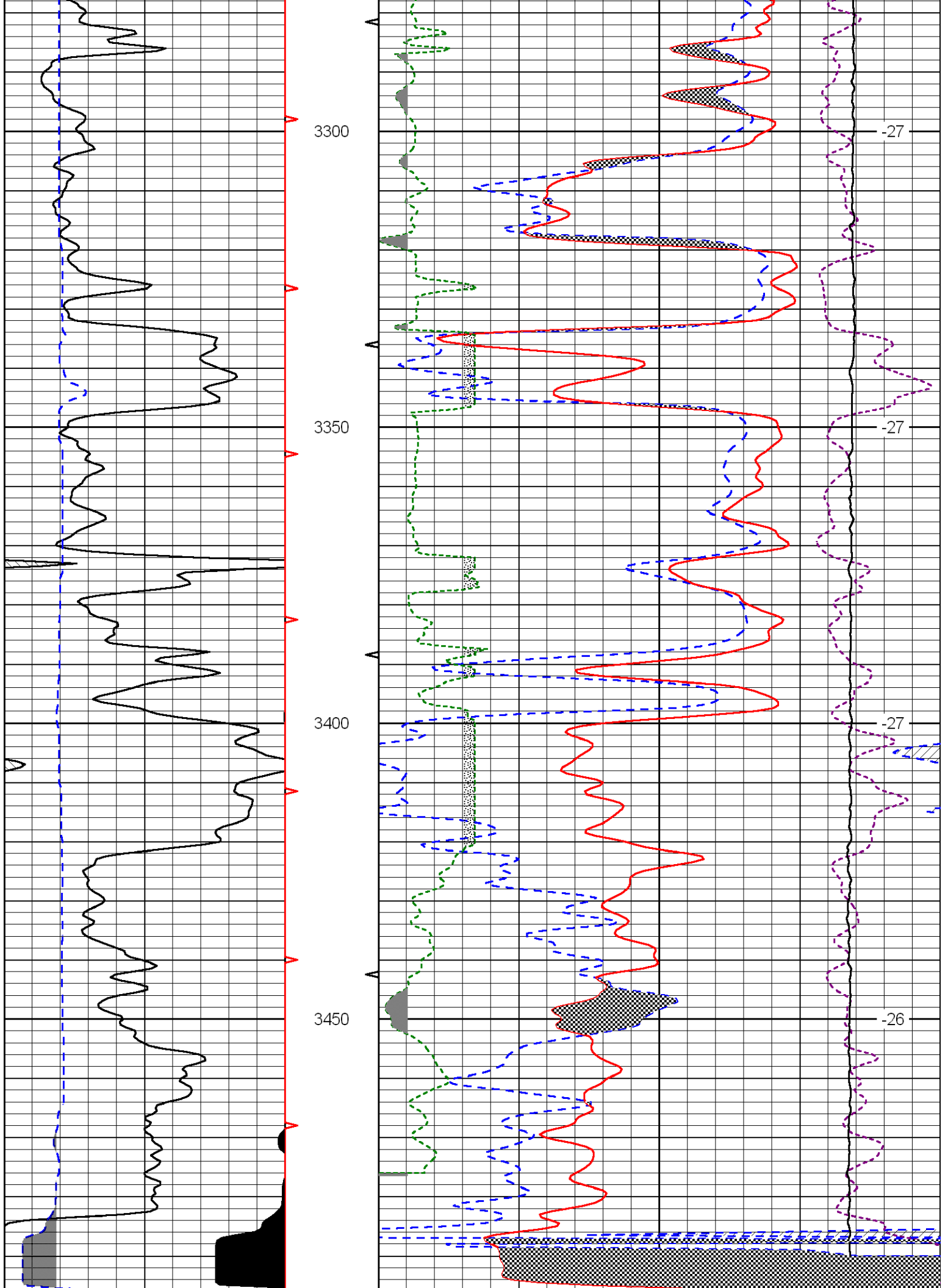


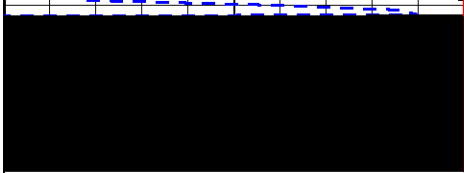
Database File: kirby_102812hd.db
 Dataset Pathname: dil/kirstack
 Presentation Format: ondspec
 Dataset Creation: Sun Oct 28 06:46:57 2012
 Charted by: Depth in Feet scaled 1:240



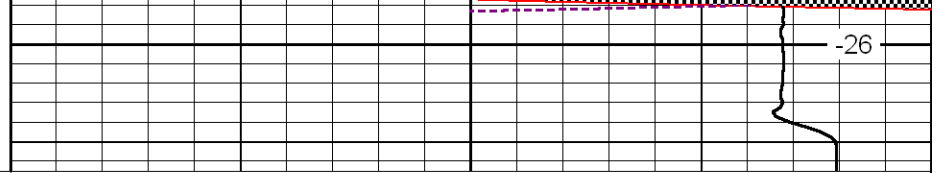








3500



0	Gamma Ray	150
---	-----------	-----

6	Caliper (GAPI)	16
---	----------------	----

30	CNLS	-10
----	------	-----

30	Compensated Density (2.71 ma)	-10
----	-------------------------------	-----

2.625	DGA	3.425	-0.25	Correction	0.25
-------	-----	-------	-------	------------	------

10000	Line Tension	0
-------	--------------	---

LSPD