



Pioneer Energy Services

# Dual Induction Log

API No.	15-009-25767-00-00	
Company	Kirby Krier Oil, Inc.	
Well	Rehme North #1	
Field	Fiest	
County	Barton	State
Location	330' FSL & 1980' FEL	
Sec: 29	Twp: 18S	Rge: 11W
Other Services	CNL/CDL MEL	

Permanent Datum	Ground Level	Elevation	1829
Log Measured From	Kelly Bushing	7	Ft. Above Perm. Datum
Drilling Measured From	Kelly Bushing		
Date	10/28/2012		
Run Number	One		
Depth Driller	3506		
Depth Logger	3507		
Bottom Logged Interval	3506		
Top Log Interval	250		
Casing Driller	8.625 @ 278		
Casing Logger	276		
Bit Size	7.875		
Type Fluid in Hole	Chemical		
Salinity, ppm CL	2500		
Density / Viscosity	9.2	51	
pH / Fluid Loss	8.5	8.8	
Source of Sample	Flowline		
Rm @ Meas. Temp	0.75 @	46	
Rmf @ Meas. Temp	0.56 @	46	
Rmc @ Meas. Temp	1.01 @	46	
Source of Rmf / Rmc	Charts		
Rm @ BHT	0.31 @	113	
Operating Rig Time	4 Hours		
Max Rec. Temp. F	113		
Equipment Number	91		
Location	Hays		
Recorded By	D. Schmidt		
Witnessed By	Kurt Talbott		

<<< Fold Here >>>

All interpretations are opinions based on inferences from electrical or other measurements and we cannot and do not guarantee the accuracy or correctness of any interpretation, and we shall not, except in the case of gross or willful negligence on our part, be liable or responsible for any loss, costs, damages, or expenses incurred or sustained by anyone resulting from any interpretation made by any of our officers, agents or employees. These interpretations are also subject to our general terms and conditions set out in our current Price Schedule.

### Comments

Thank you for using Log-Tech, Inc.  
 (785) 625-3858  
 Ellinwood,  
 7 1/2 North on 110 Rd to 70 Rd, 1/4 East,  
 South into

Database File: kirby\_102812hd.db  
 Dataset Pathname: dil/kirstack  
 Presentation Format: dil2in  
 Dataset Creation: Sun Oct 28 06:46:57 2012  
 Charted by: Depth in Feet scaled 1:600

0 Gamma Ray 150  
-200 SP 0

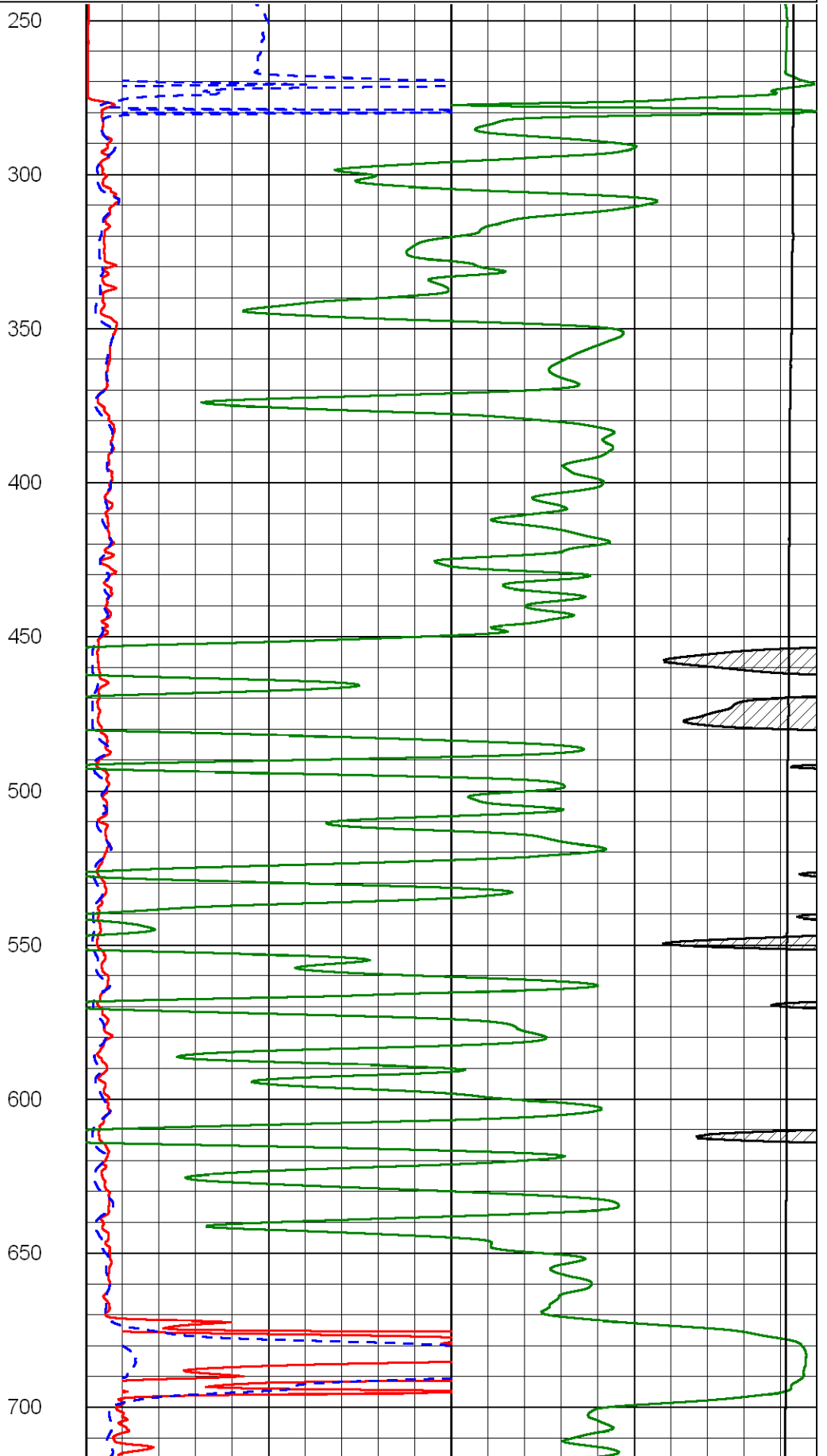
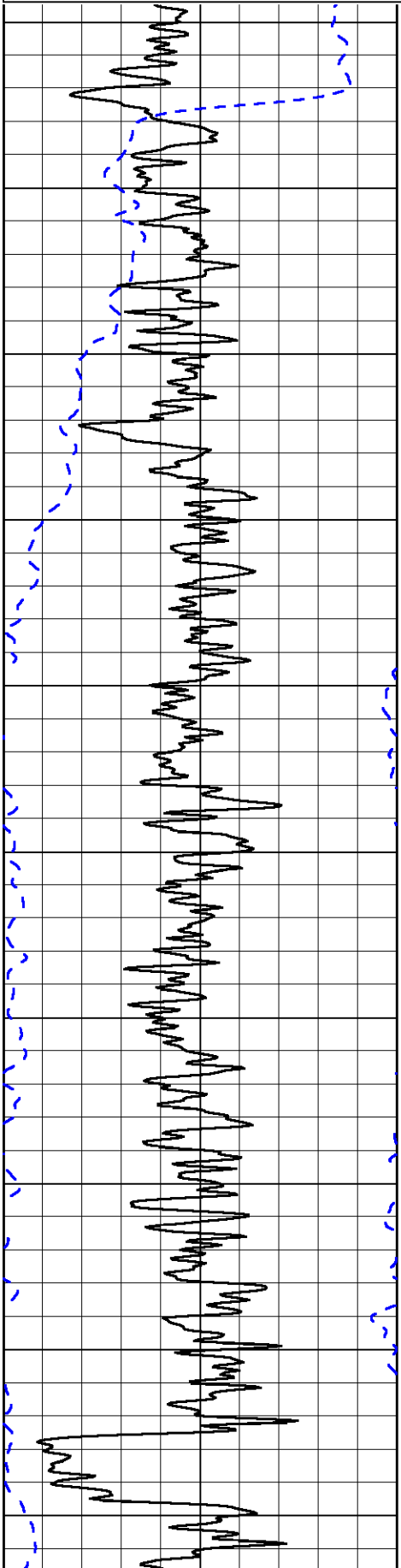
0 Shallow Resistivity 50  
0 Deep Resistivity 50

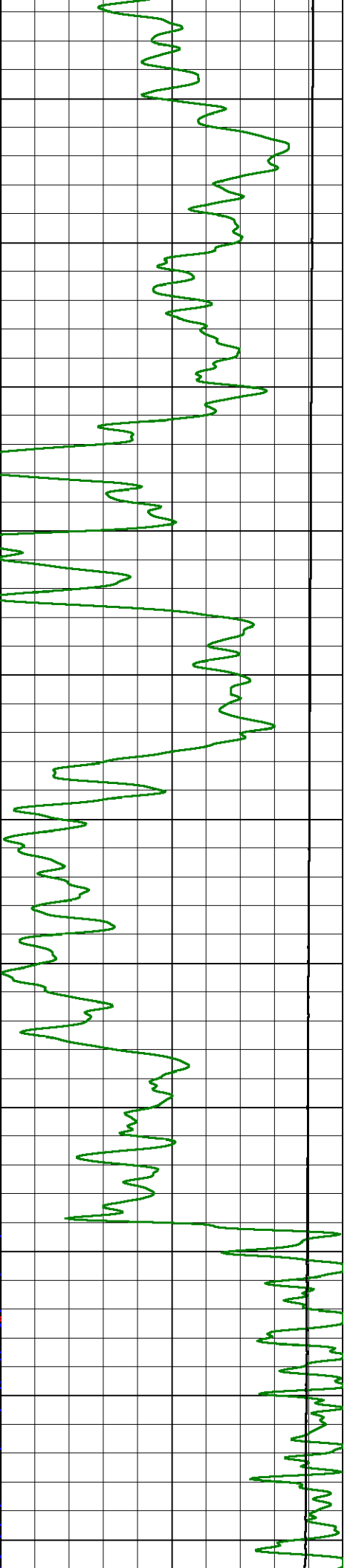
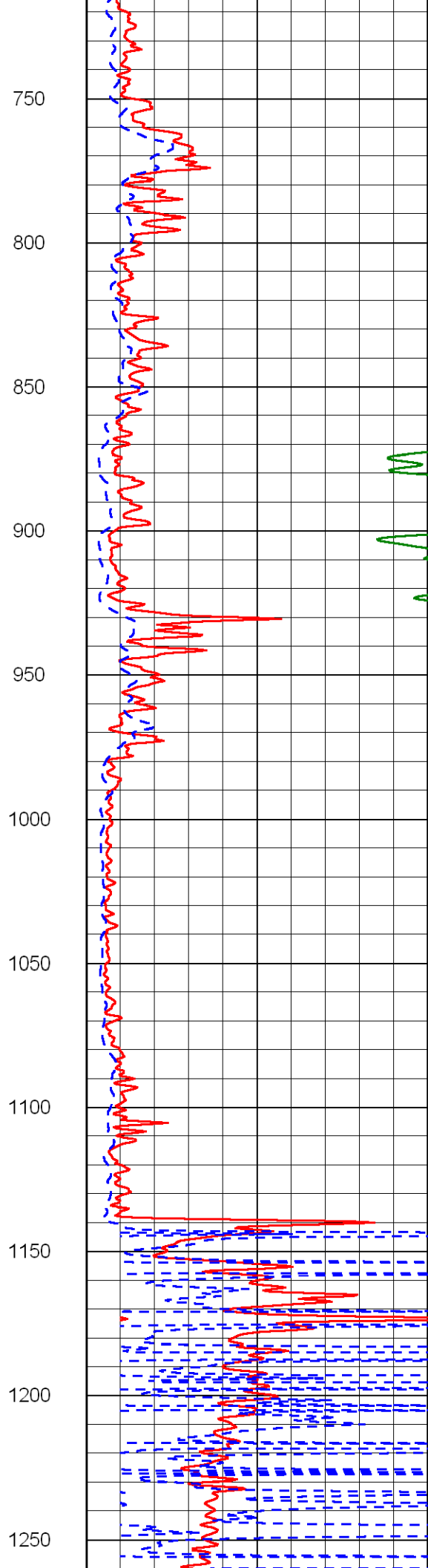
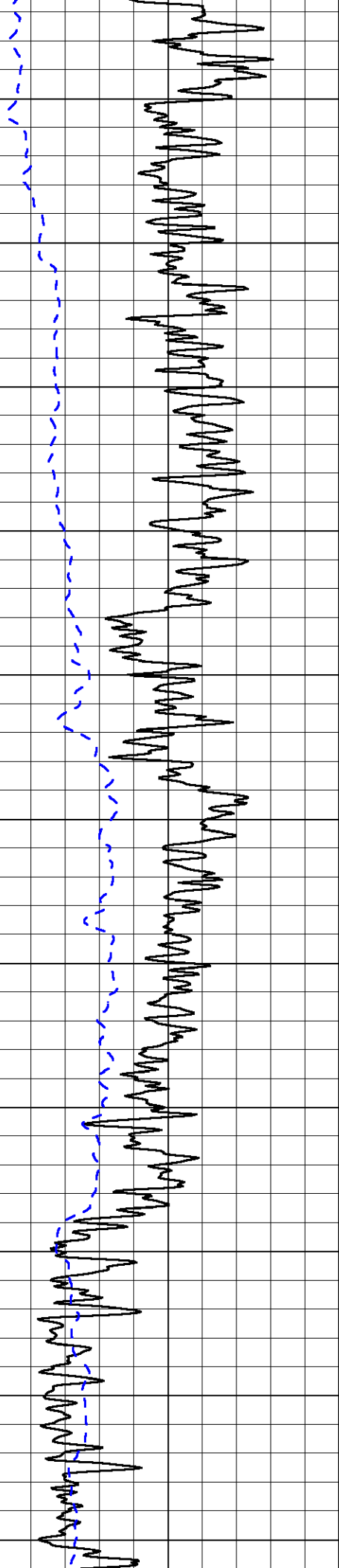
1000 Conductivity 0

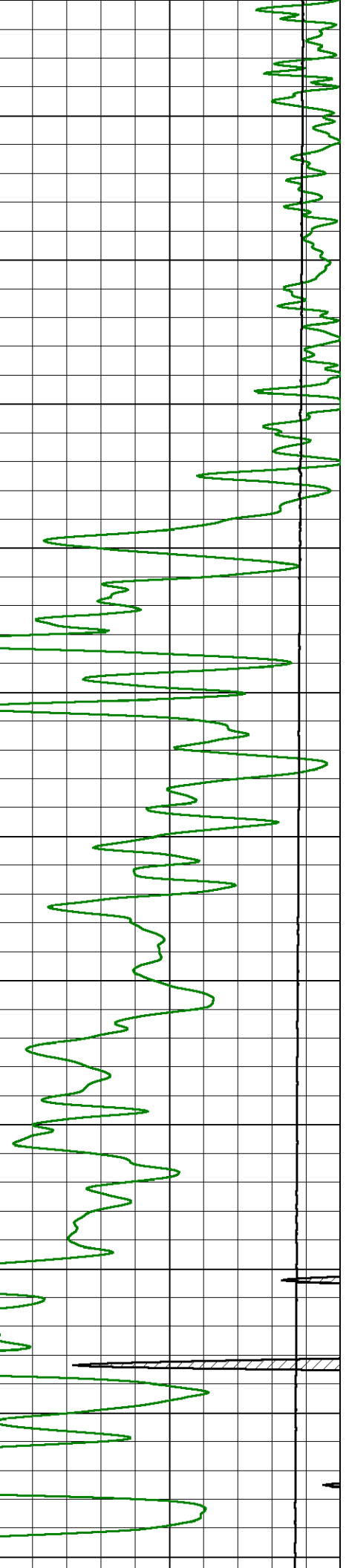
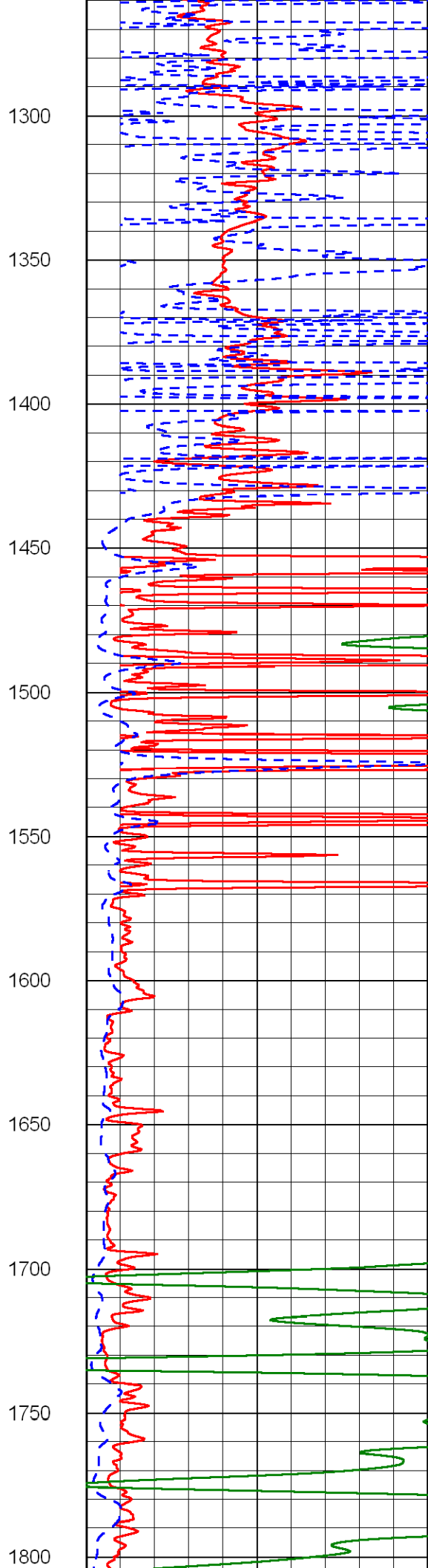
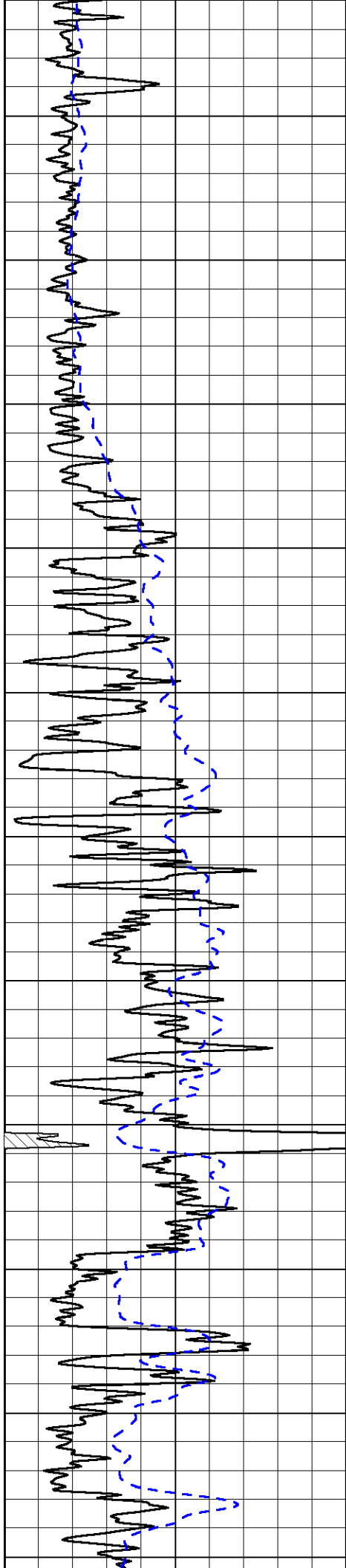
15000 Line Tension 0

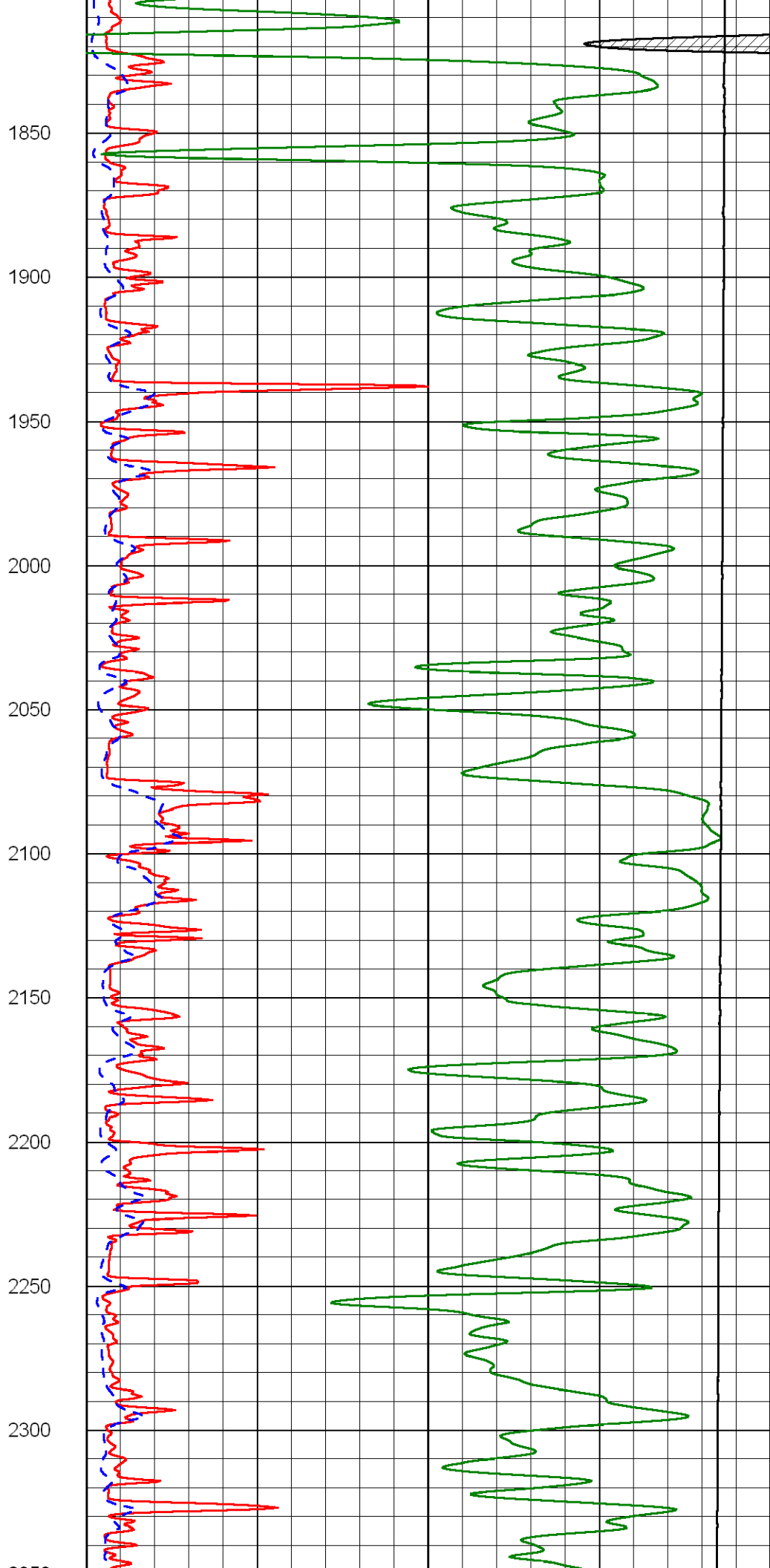
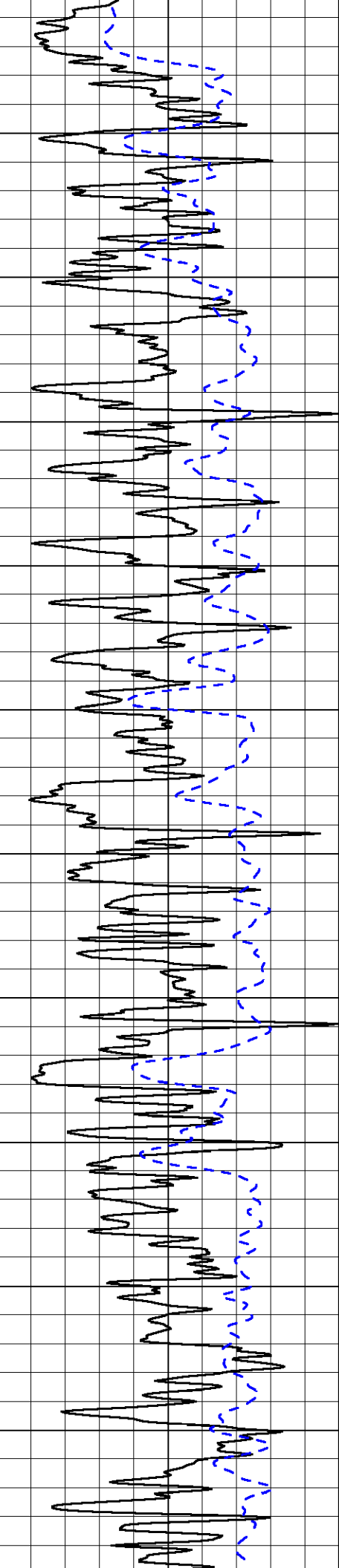
50 Shallow Resistivity 500

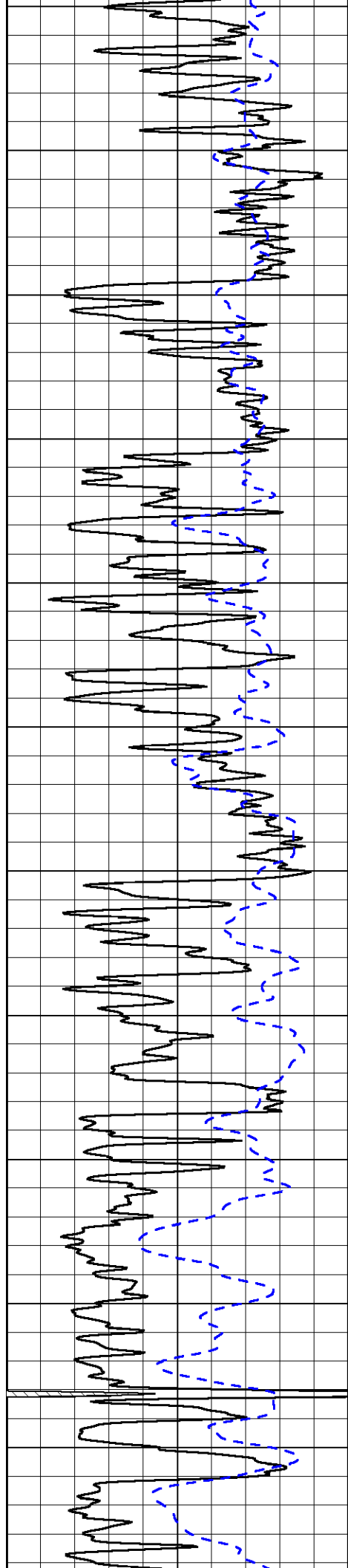
50 Deep Resistivity 500



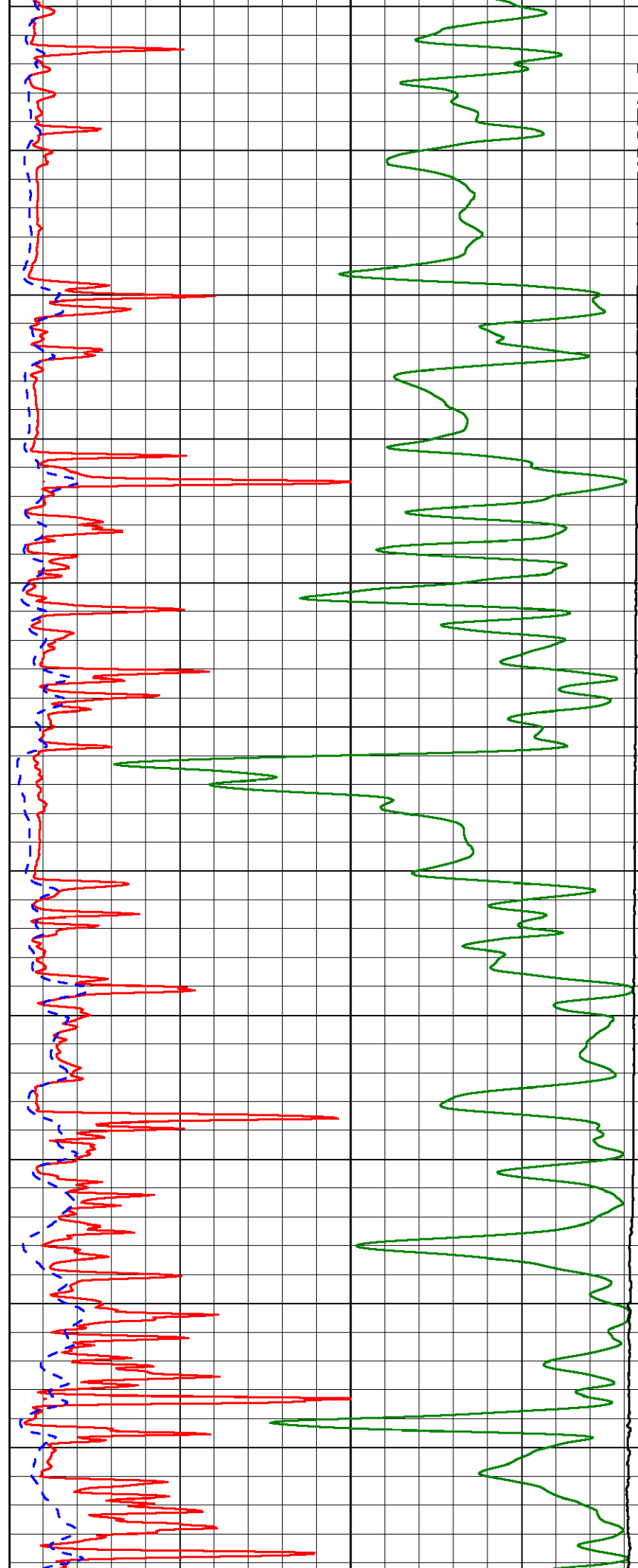


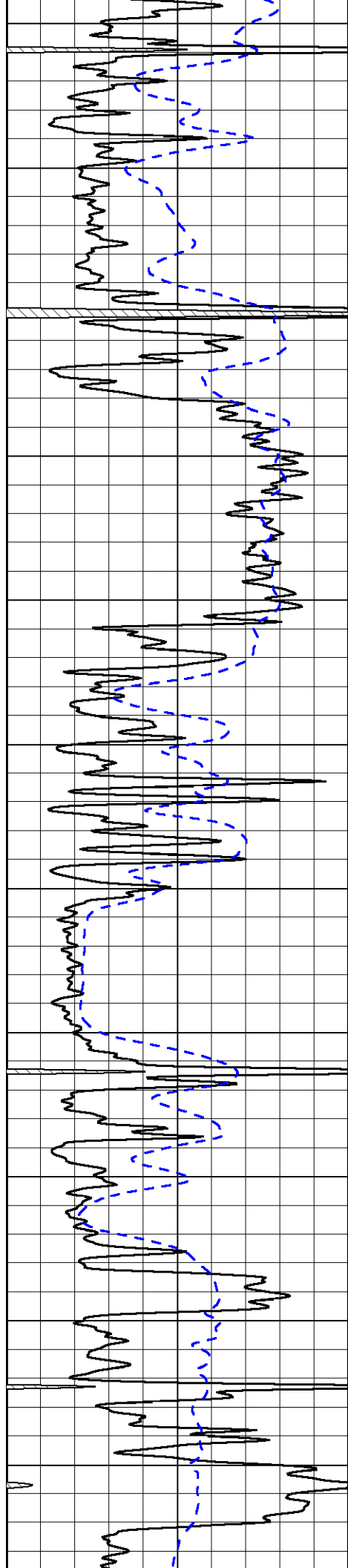




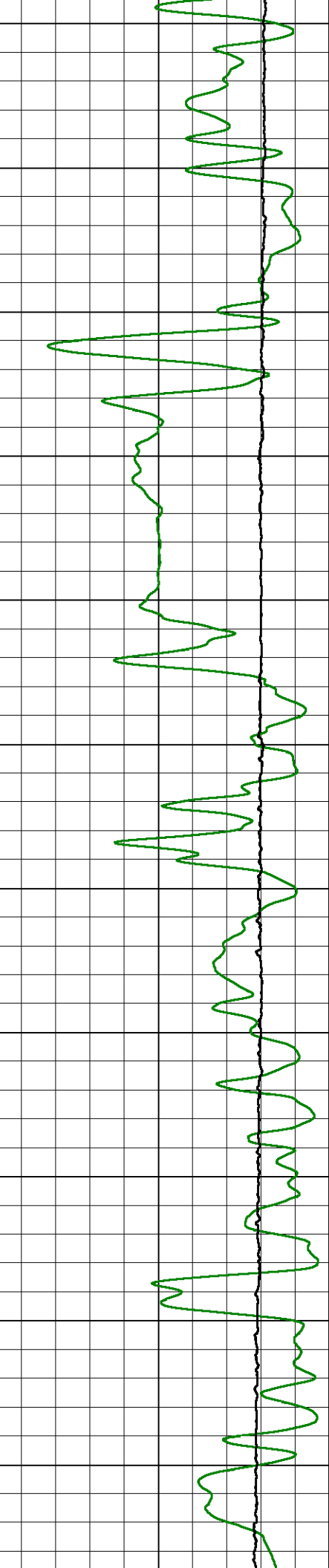
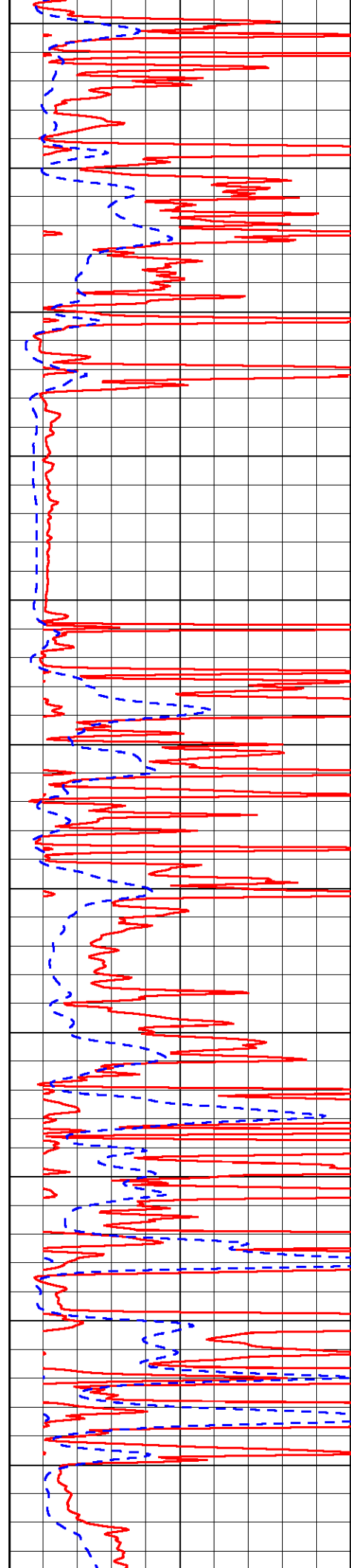


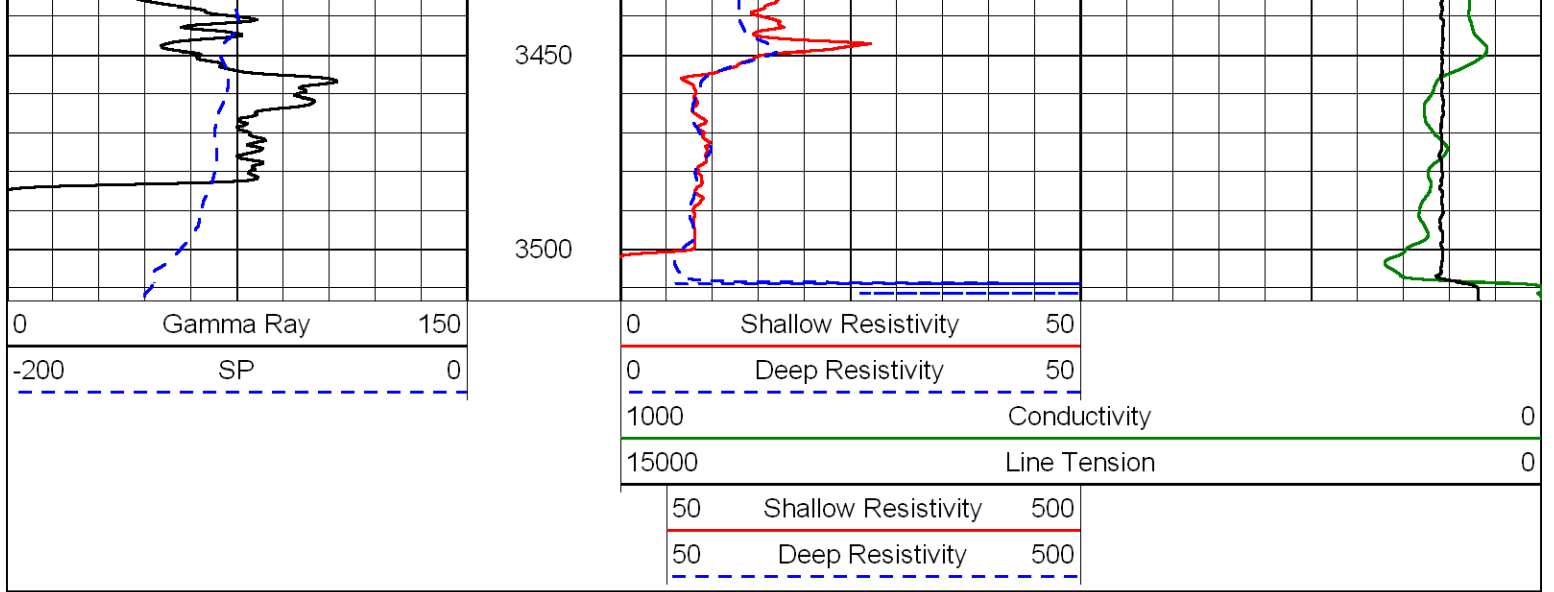
2350  
2400  
2450  
2500  
2550  
2600  
2650  
2700  
2750  
2800  
2850



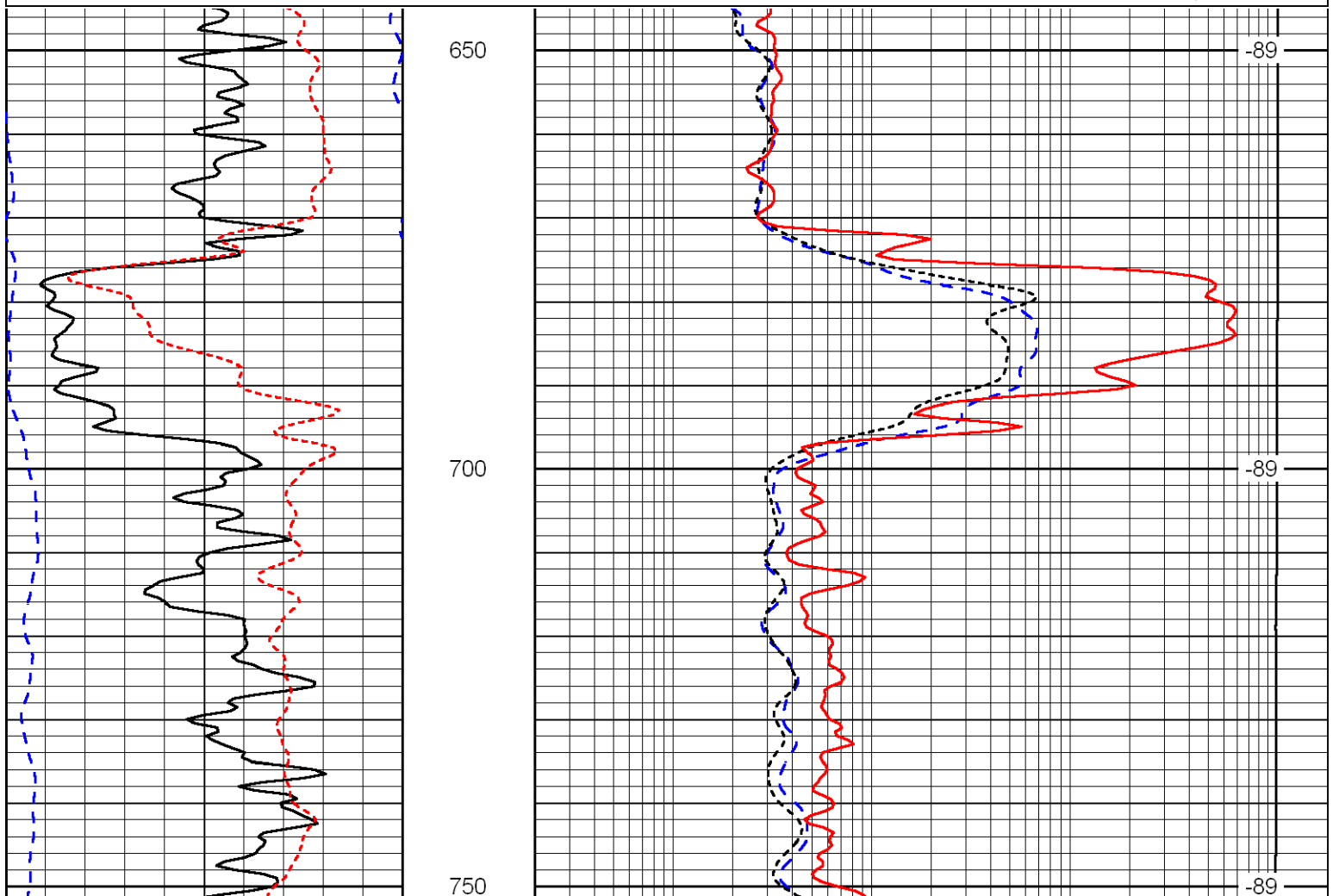
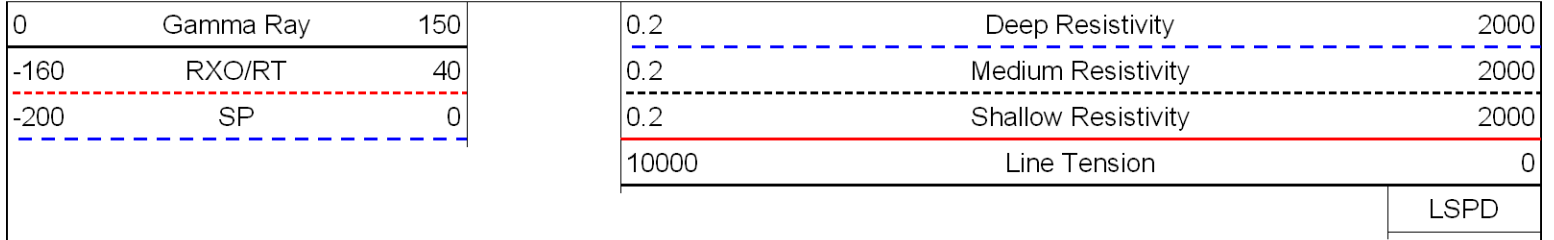


2900  
2950  
3000  
3050  
3100  
3150  
3200  
3250  
3300  
3350  
3400





Database File: kirby\_102812hd.db  
 Dataset Pathname: dil/kirstack  
 Presentation Format: dil  
 Dataset Creation: Sun Oct 28 06:46:57 2012  
 Charted by: Depth in Feet scaled 1:240



0	Gamma Ray	150
-160	RXO/RT	40
-200	SP	0

0.2	Deep Resistivity	2000
0.2	Medium Resistivity	2000
0.2	Shallow Resistivity	2000
10000	Line Tension	0

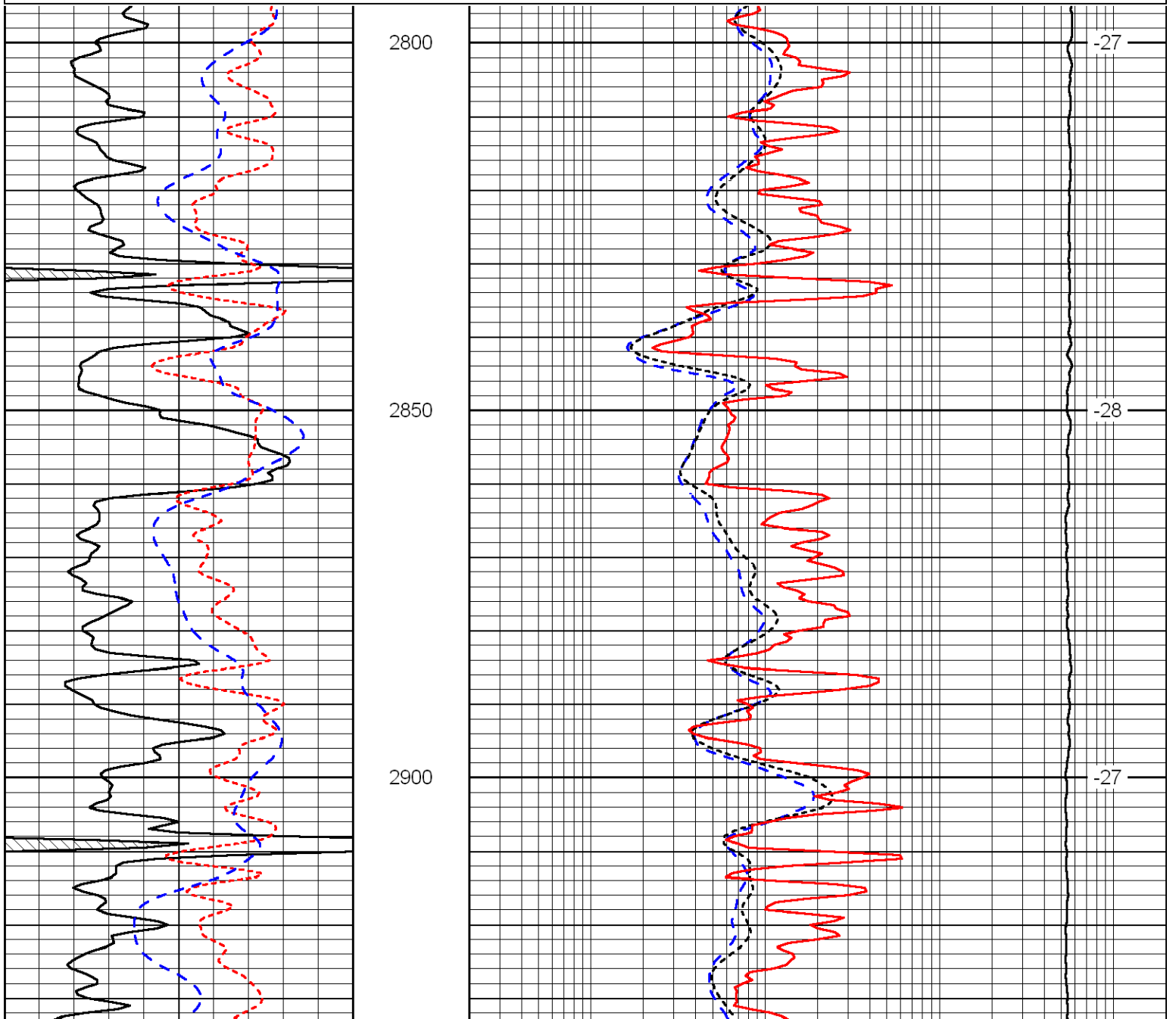
LSPD

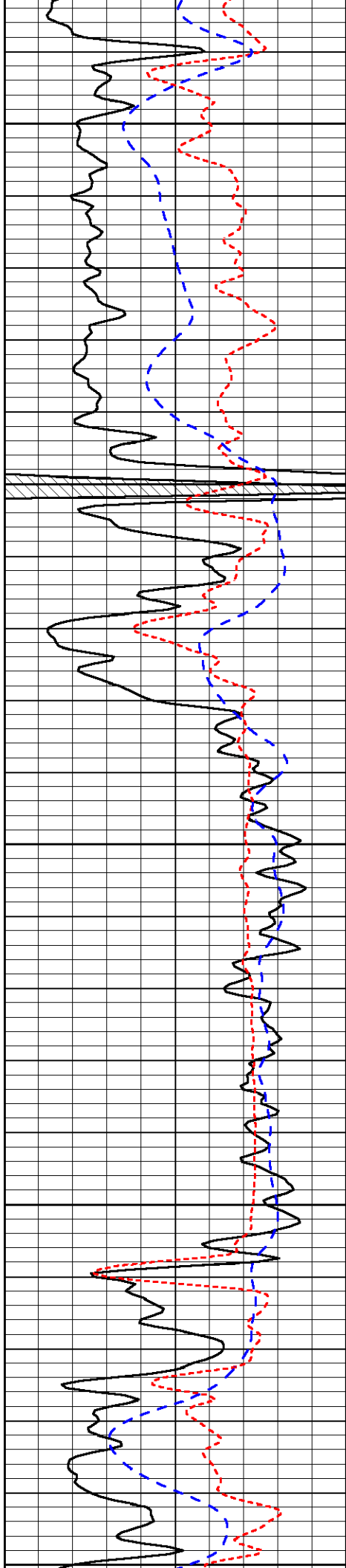
Database File: kirby\_102812hd.db  
 Dataset Pathname: dil/kirstack  
 Presentation Format: dil  
 Dataset Creation: Sun Oct 28 06:46:57 2012  
 Charted by: Depth in Feet scaled 1:240

0	Gamma Ray	150
-160	RXO/RT	40
-200	SP	0

0.2	Deep Resistivity	2000
0.2	Medium Resistivity	2000
0.2	Shallow Resistivity	2000
10000	Line Tension	0

LSPD





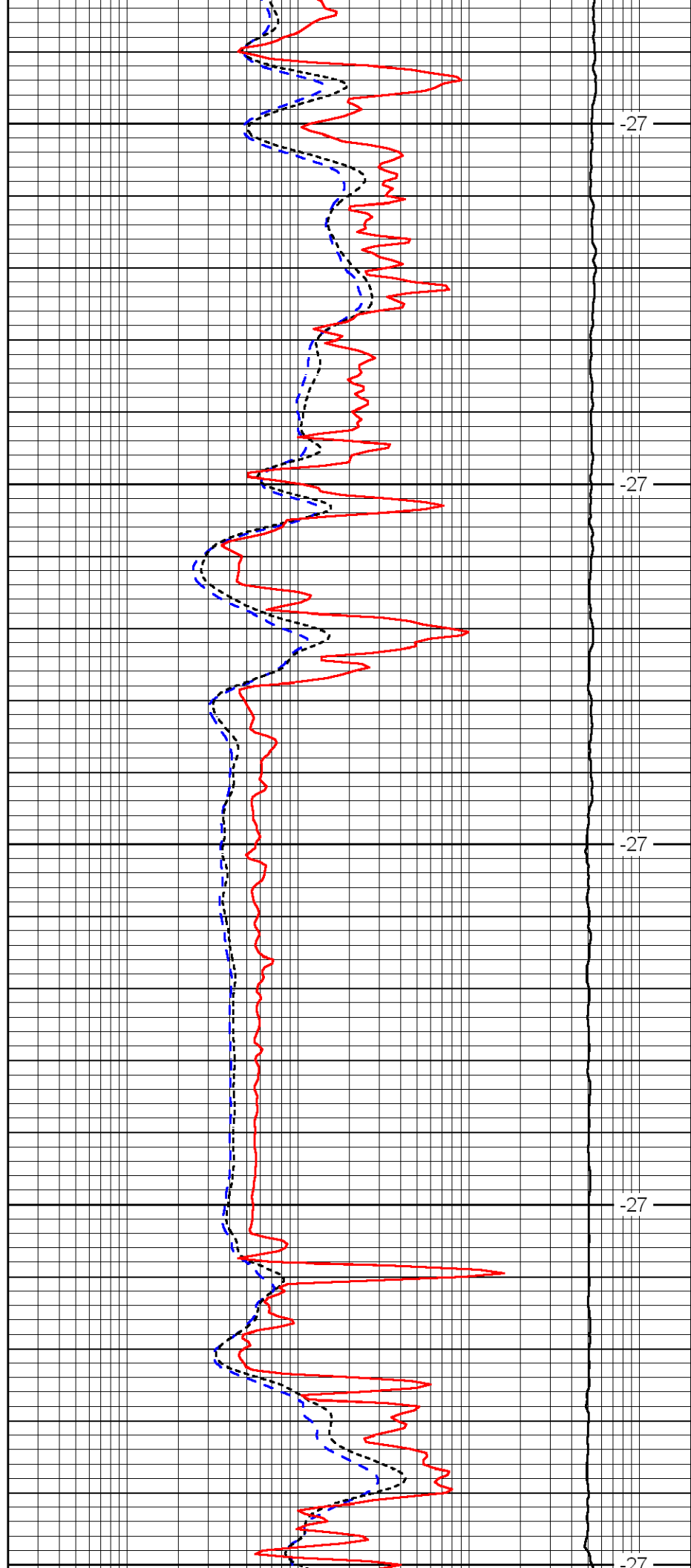
2950

3000

3050

3100

3150



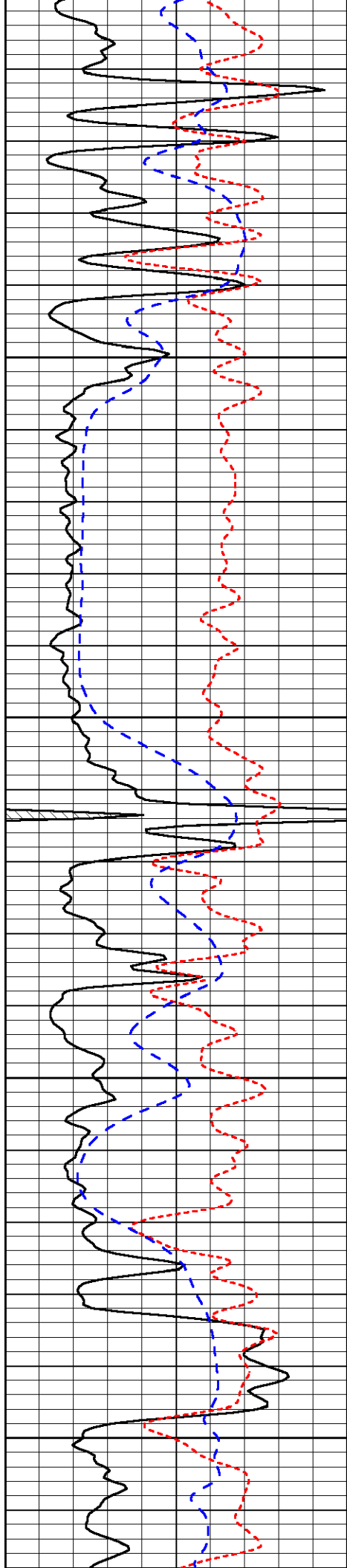
-27

-27

-27

-27

-27



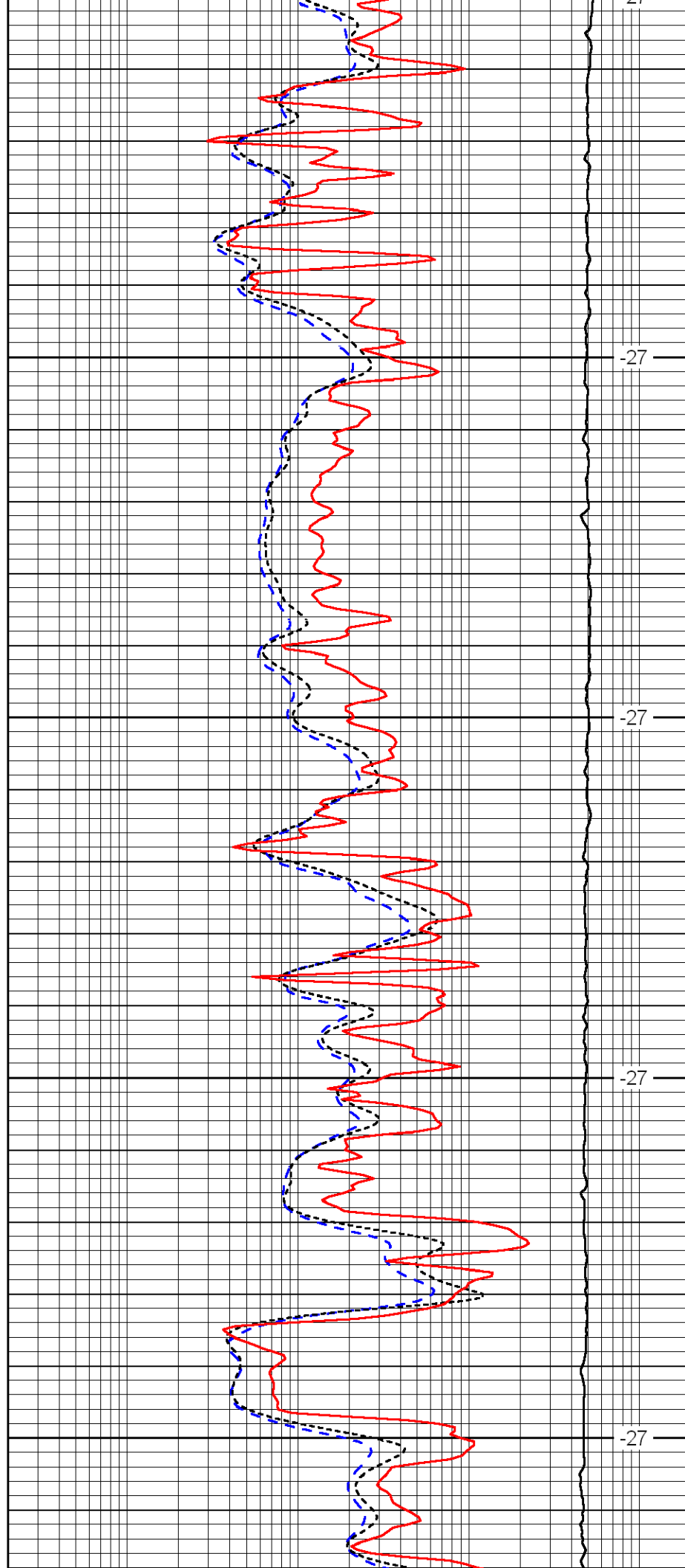
3150

3200

3250

3300

3350



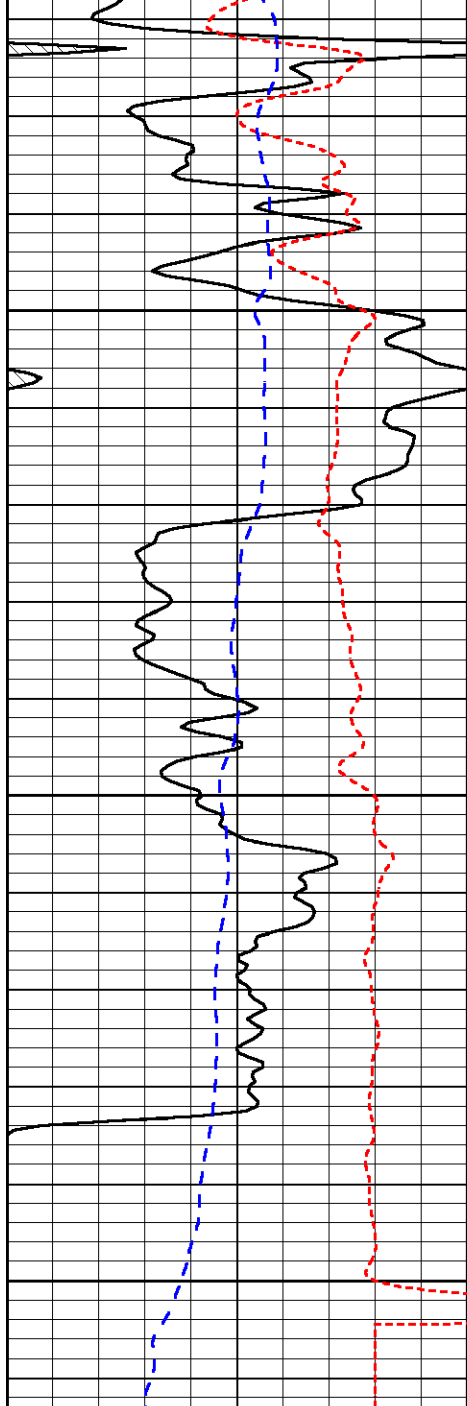
21

-27

-27

-27

-27

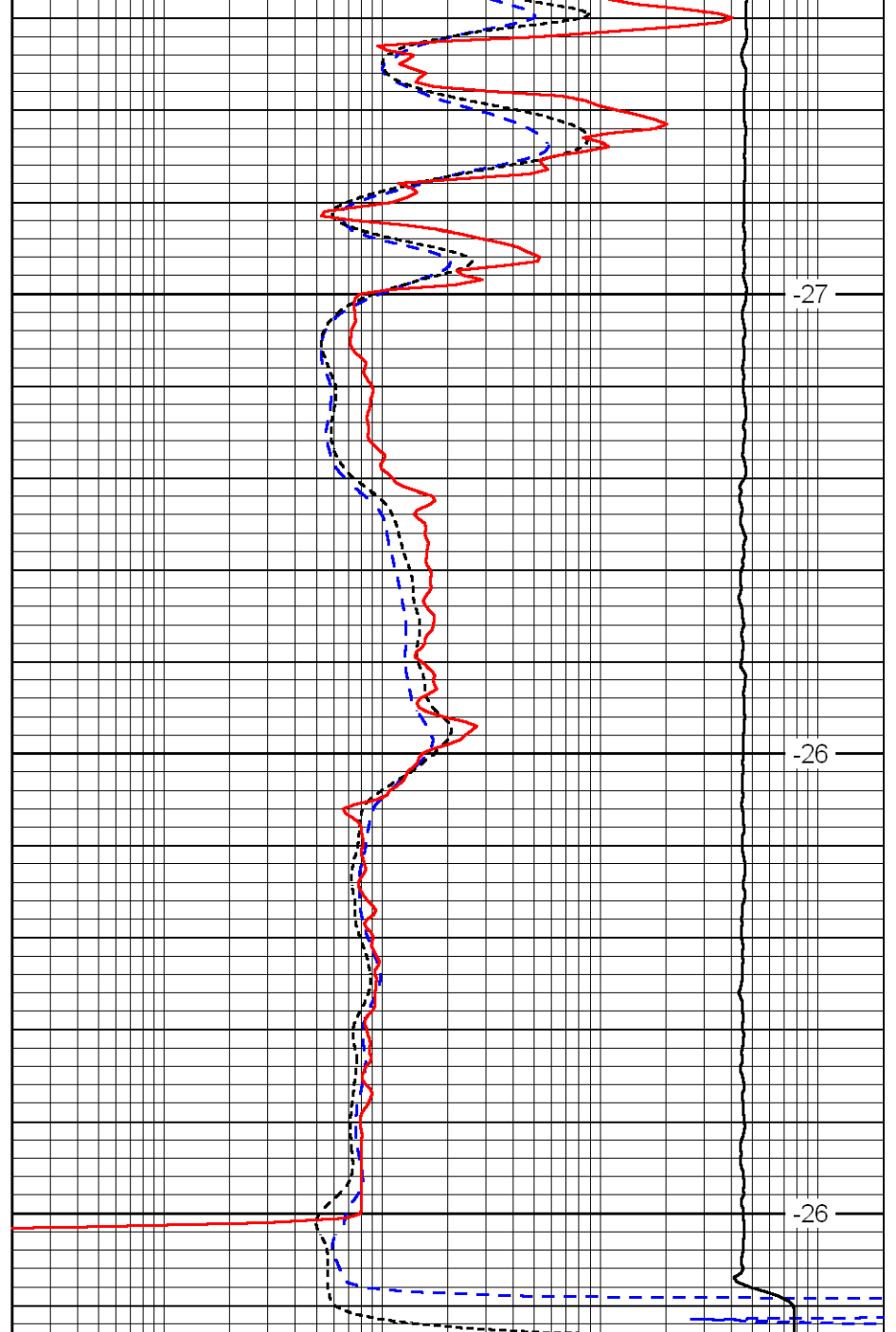


3400

3450

3500

0	Gamma Ray	150
-160	RXO/RT	40
-200	SP	0



-27

-26

-26

0.2	Deep Resistivity	2000
0.2	Medium Resistivity	2000
0.2	Shallow Resistivity	2000
10000	Line Tension	0

LSPD