



**SUPERIOR
Hays,
Kansas**

**DUAL
INDUCTION
LOG**

Company TRANS PACIFIC OIL CORPORATION
Well LEGLEITER "A" #1-14
Field KEOUGH NORTH EAST
County RUSH
State KANSAS

Company TRANS PACIFIC OIL CORPORATION
Well LEGLEITER "A" #1-14
Field KEOUGH NORTH EAST
County RUSH State KANSAS

Location: API #: 15-165-21985
990' FNL & 2310' FWL
SEC 14 TWP 16S RGE 20W
Permanent Datum GROUND LEVEL Elevation 2170
Log Measured From KELLY BUSHING 10' A.G.L.
Drilling Measured From KELLY BUSHING
Other Services
CDL/CNL
Elevation
K.B. 2180
D.F. 2178
G.L. 2170

Date	8-10-12
Run Number	ONE
Depth Driller	4030
Depth Logger	4030
Bottom Logged Interval	4028
Top Log Interval	00
Casing Driller	1420
Casing Logger	1420
Bit Size	7.875
Type Fluid in Hole	CHEMICAL MUD
Density / Viscosity	9.3 / 54
pH / Fluid Loss	11.0 / 9.2
Source of Sample	FLOWLINE
Rim @ Meas. Temp	0.85 @ 86F
Rmf @ Meas. Temp	0.64 @ 86F
Rmc @ Meas. Temp	1.02 @ 86F
Source of Rmf / Rmc	MEASURED
Rim @ BHT	.640 @ 115F
Time Circulation Stopped	3 HOURS
Time Logger on Bottom	2:00 A.M.
Maximum Recorded Temperature	115F
Equipment Number	860
Location	HAYS, KS.
Recorded By	RUPP
Witnessed By	CRISTINA GOODRICH

<<< Fold Here >>>

All interpretations are opinions based on inferences from electrical or other measurements and we cannot and do not guarantee the accuracy or correctness of any interpretation, and we shall not, except in the case of gross or willful negligence on our part, be liable or responsible for any loss, costs, damages, or expenses incurred or sustained by anyone resulting from any interpretation made by any of our officers, agents or employees. These interpretations are also subject to our general terms and conditions set out in our current Price Schedule.

Comments

SUPERIOR WELL SERVICES
 785-628-6395
 THANK YOU FOR YOUR BUSINESS
 DIRECTIONS: LEIBENTHAL, 1S TO BLACKTOP, 9W TO RD. #150, 2N, 1/2W, S INTO.

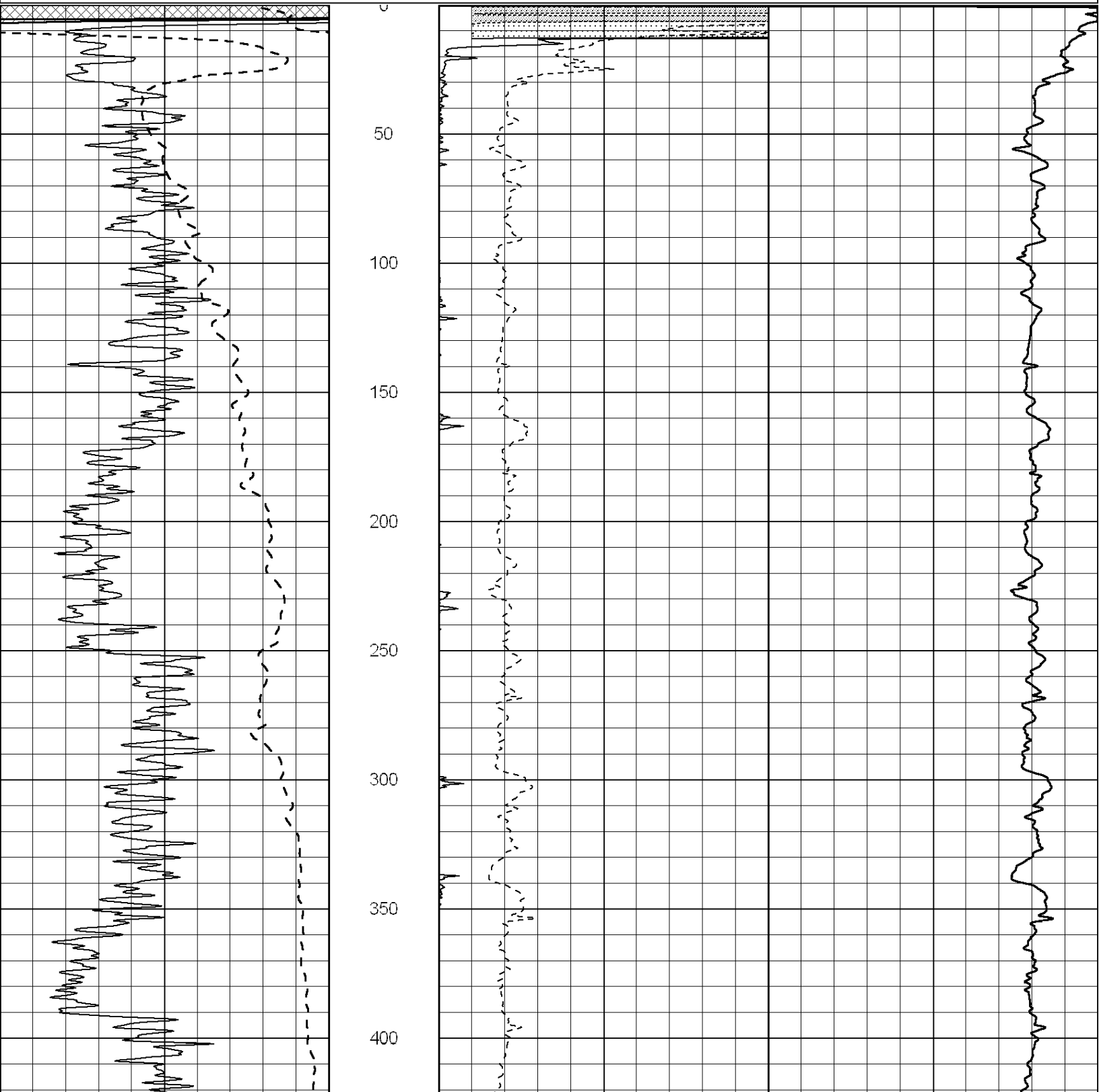


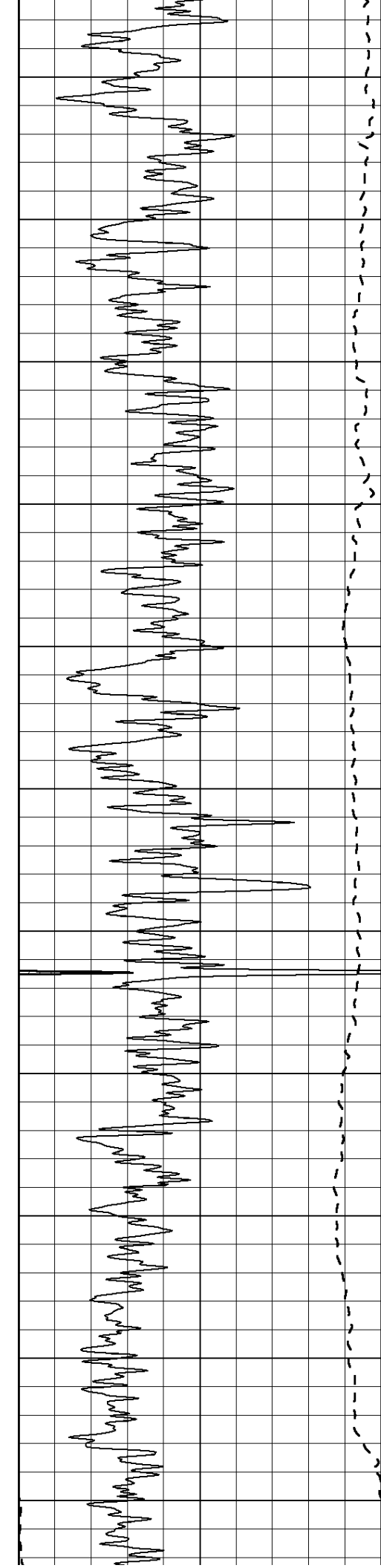
**SUPERIOR
Hays,
Kansas**

MAIN SECTION

Database File: 009572ddn.db
 Dataset Pathname: pass3.2
 Presentation Format: dil2
 Dataset Creation: Fri Aug 10 03:25:10 2012
 Charted by: Depth in Feet scaled 1:600

0	Gamma Ray (GAPI)	150	0	RLL3 (Ohm-m)	50
			0	Deep Induction (Ohm-m)	50
			1000	CILD (mmho/m)	0
			50	RILD X10 (Ohm-m)	500
			50	RLL3 X10 (Ohm-m)	500





450

500

550

600

650

700

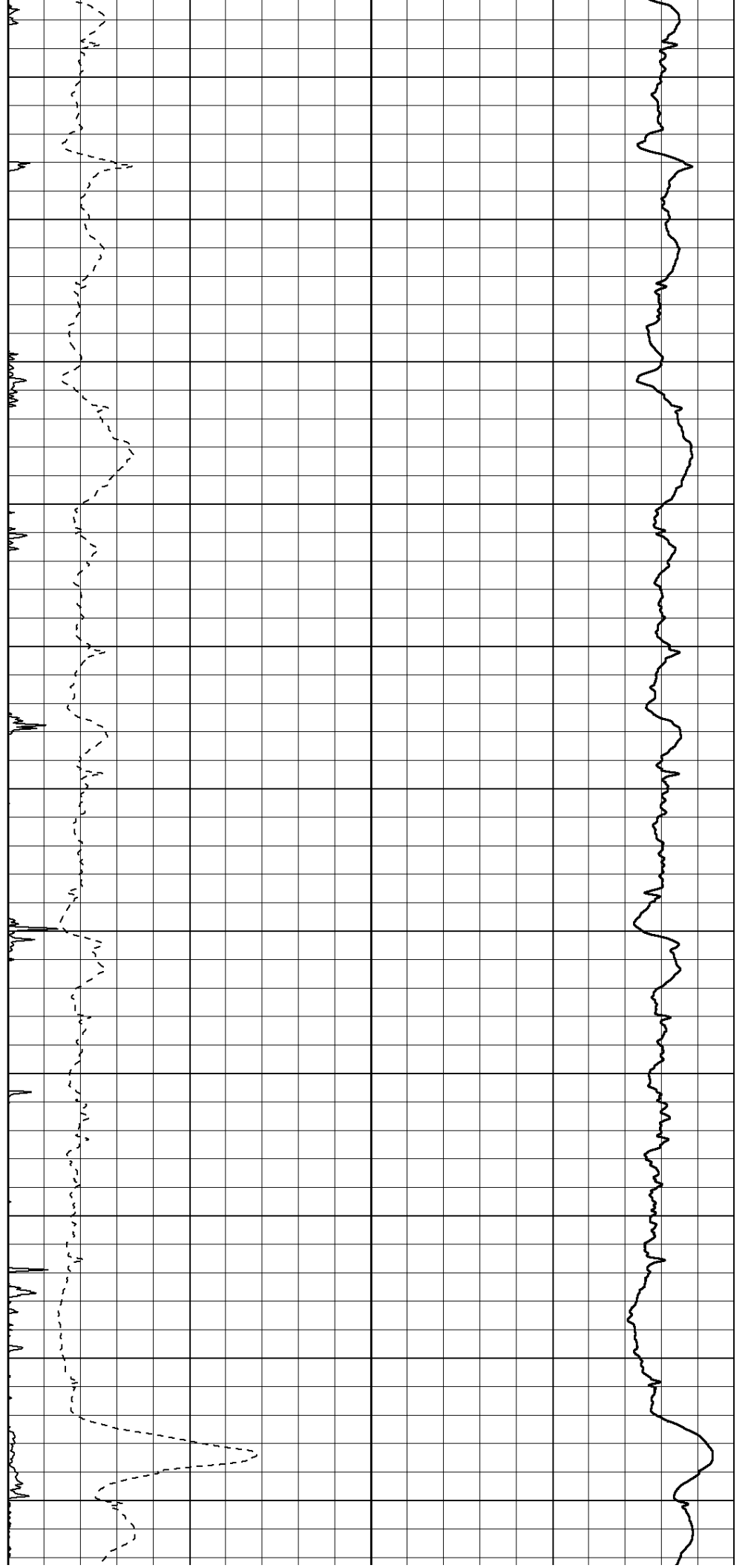
750

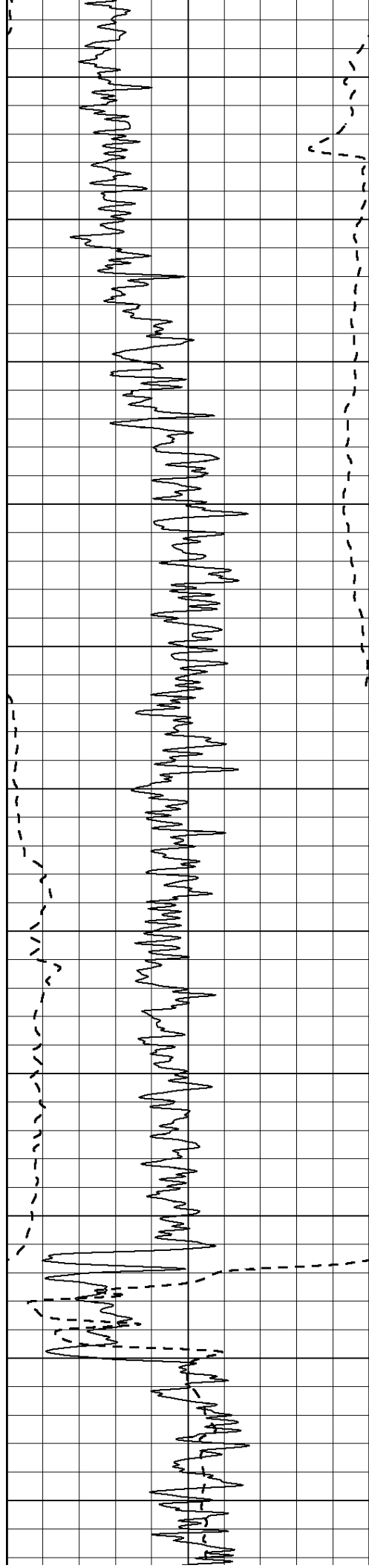
800

850

900

950





1000

1050

1100

1150

1200

1250

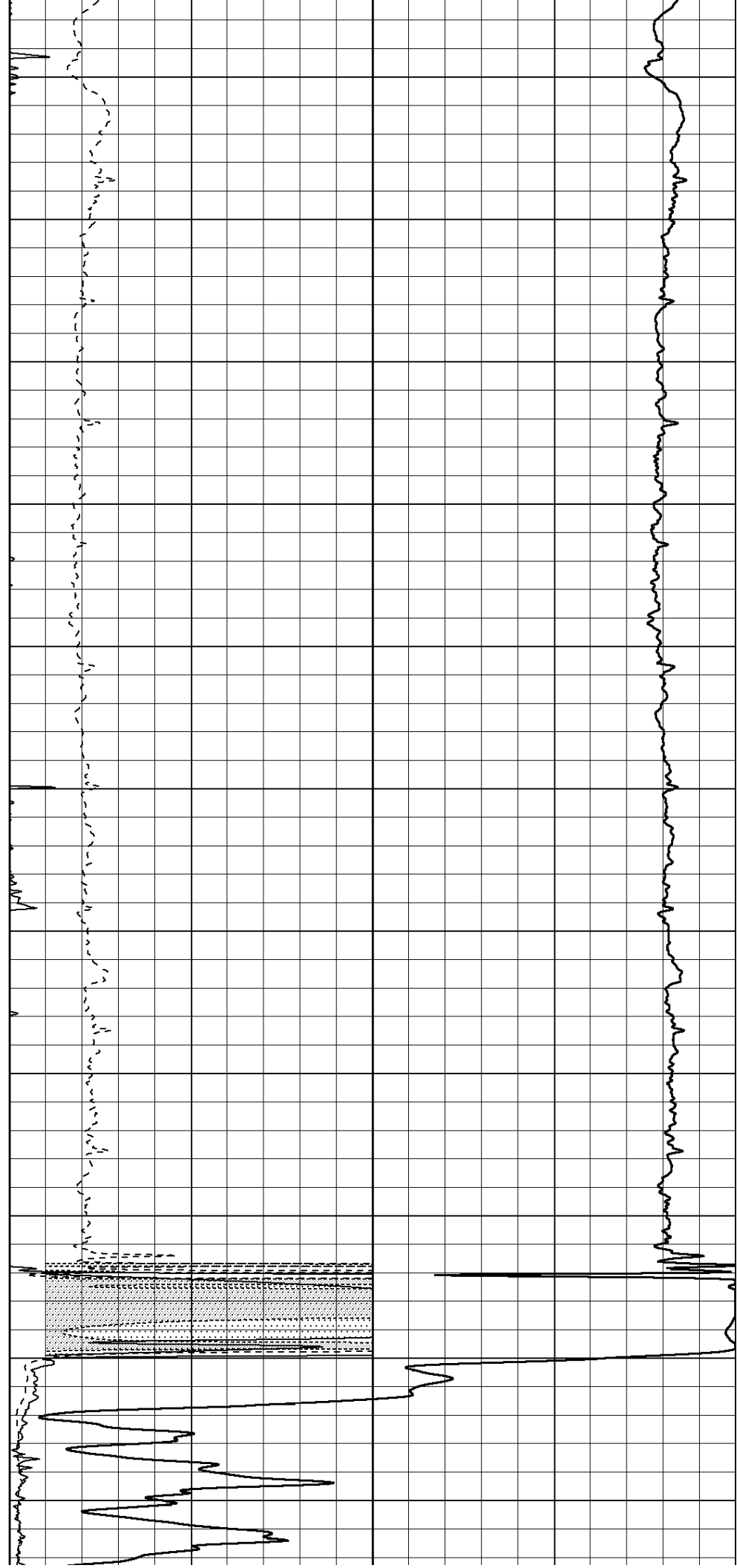
1300

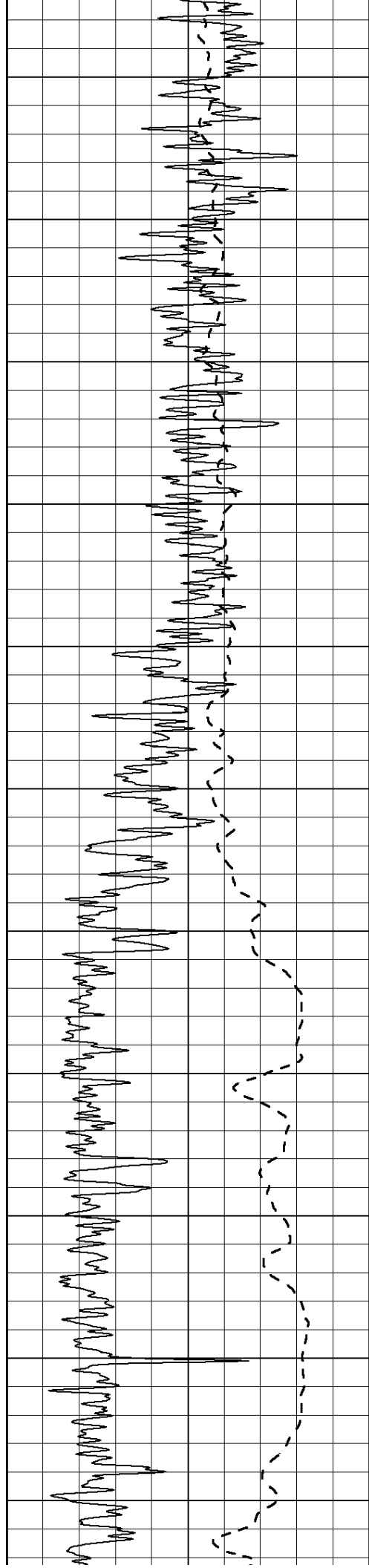
1350

1400

1450

1500





1550

1600

1650

1700

1750

1800

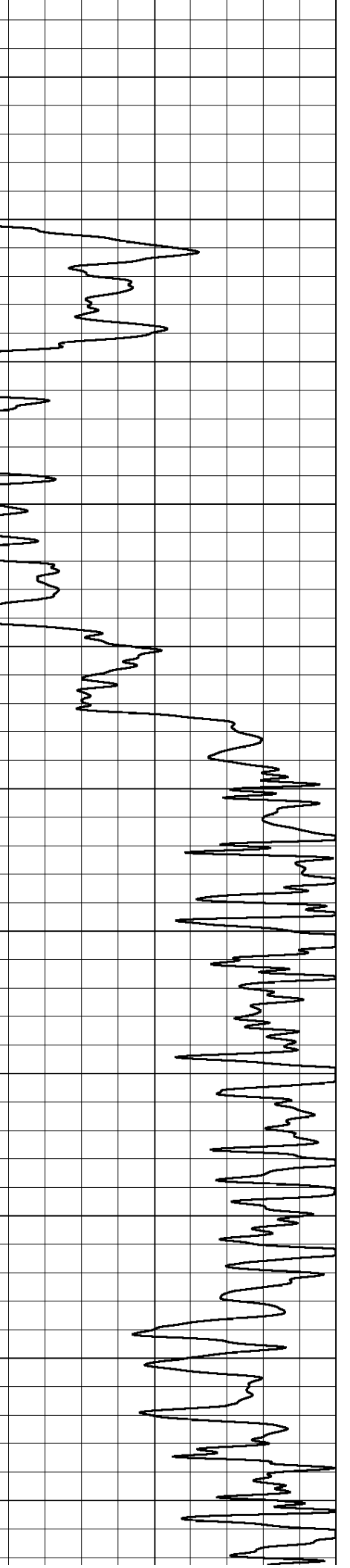
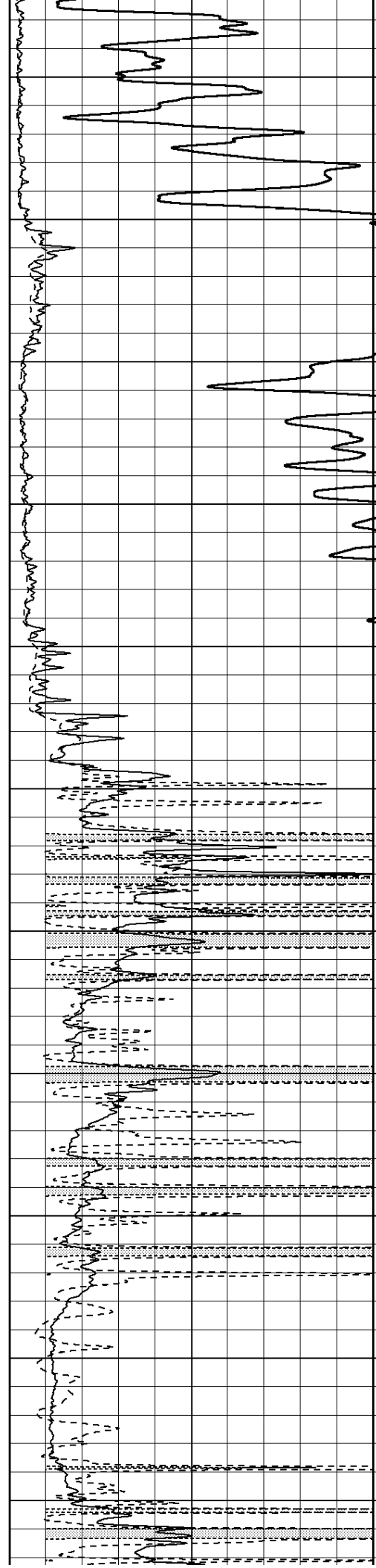
1850

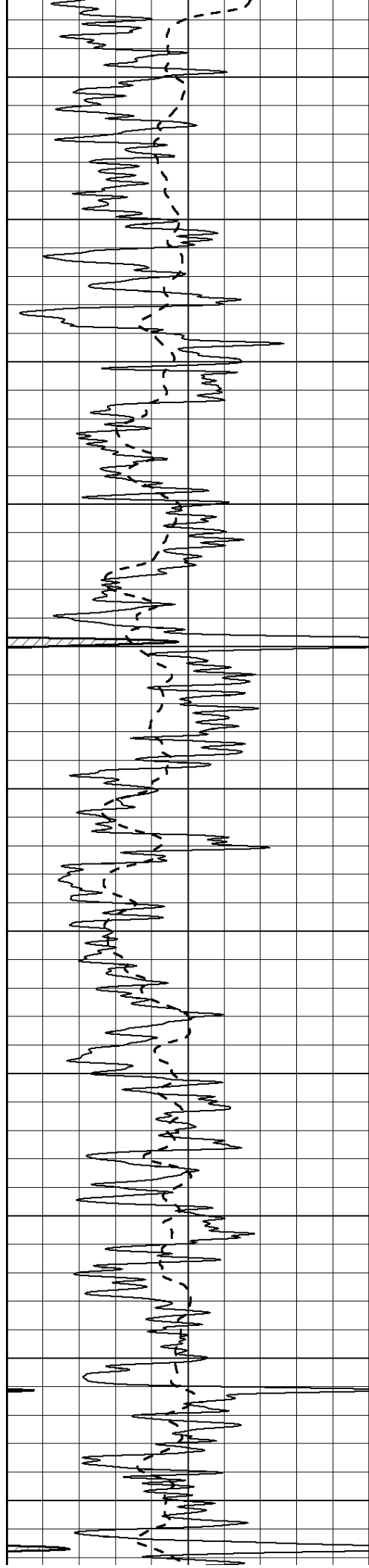
1900

1950

2000

2050





2100

2150

2200

2250

2300

2350

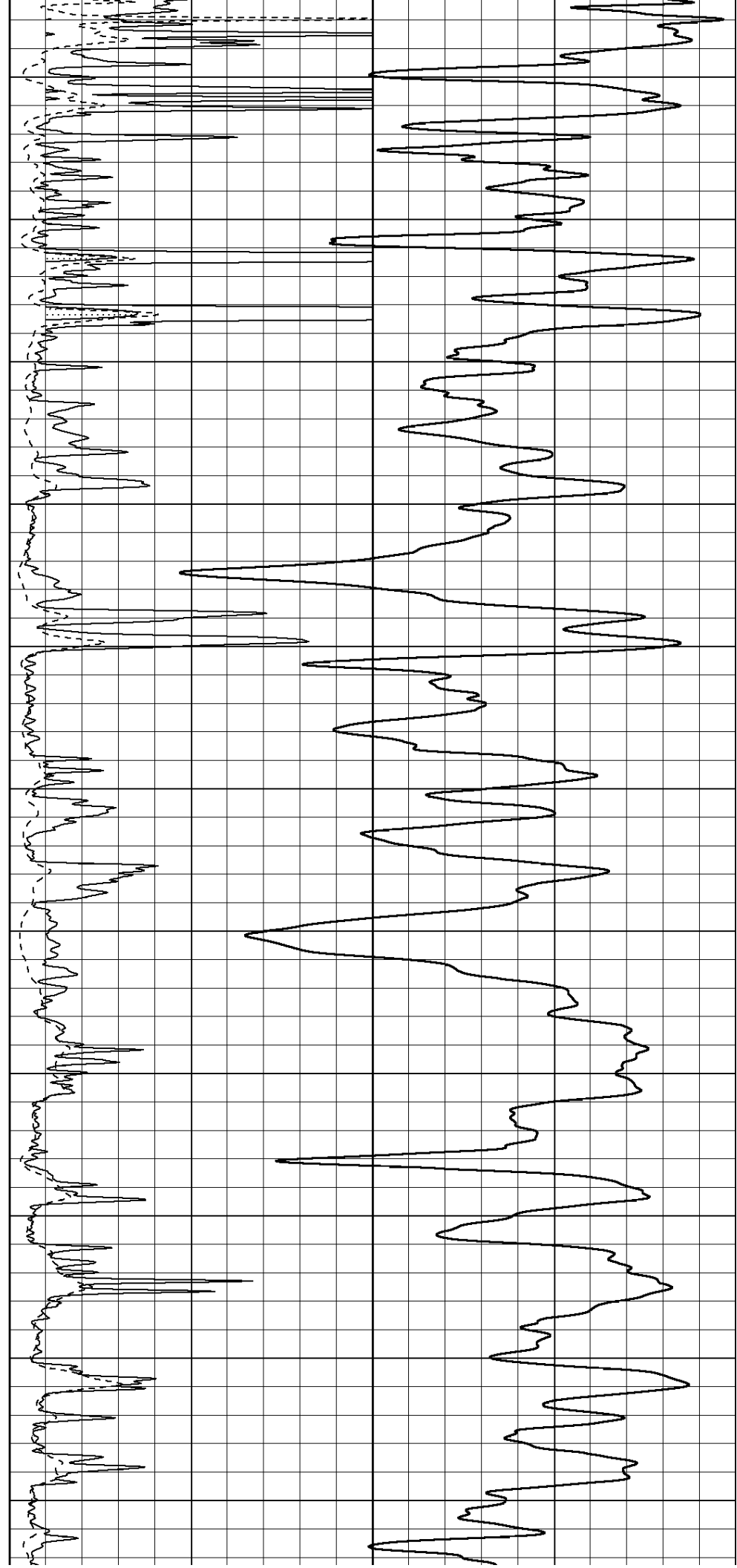
2400

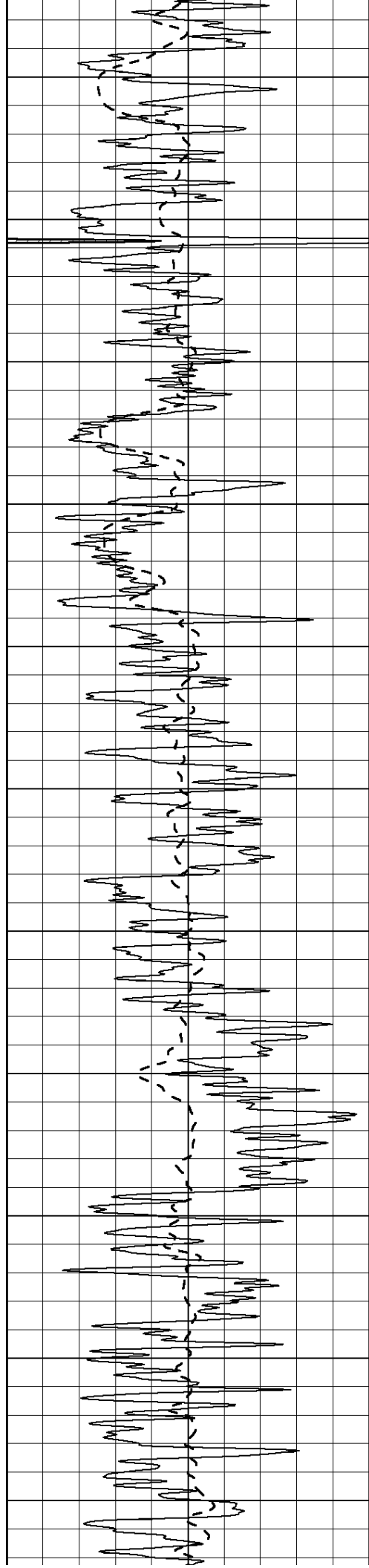
2450

2500

2550

2600





2650

2700

2750

2800

2850

2900

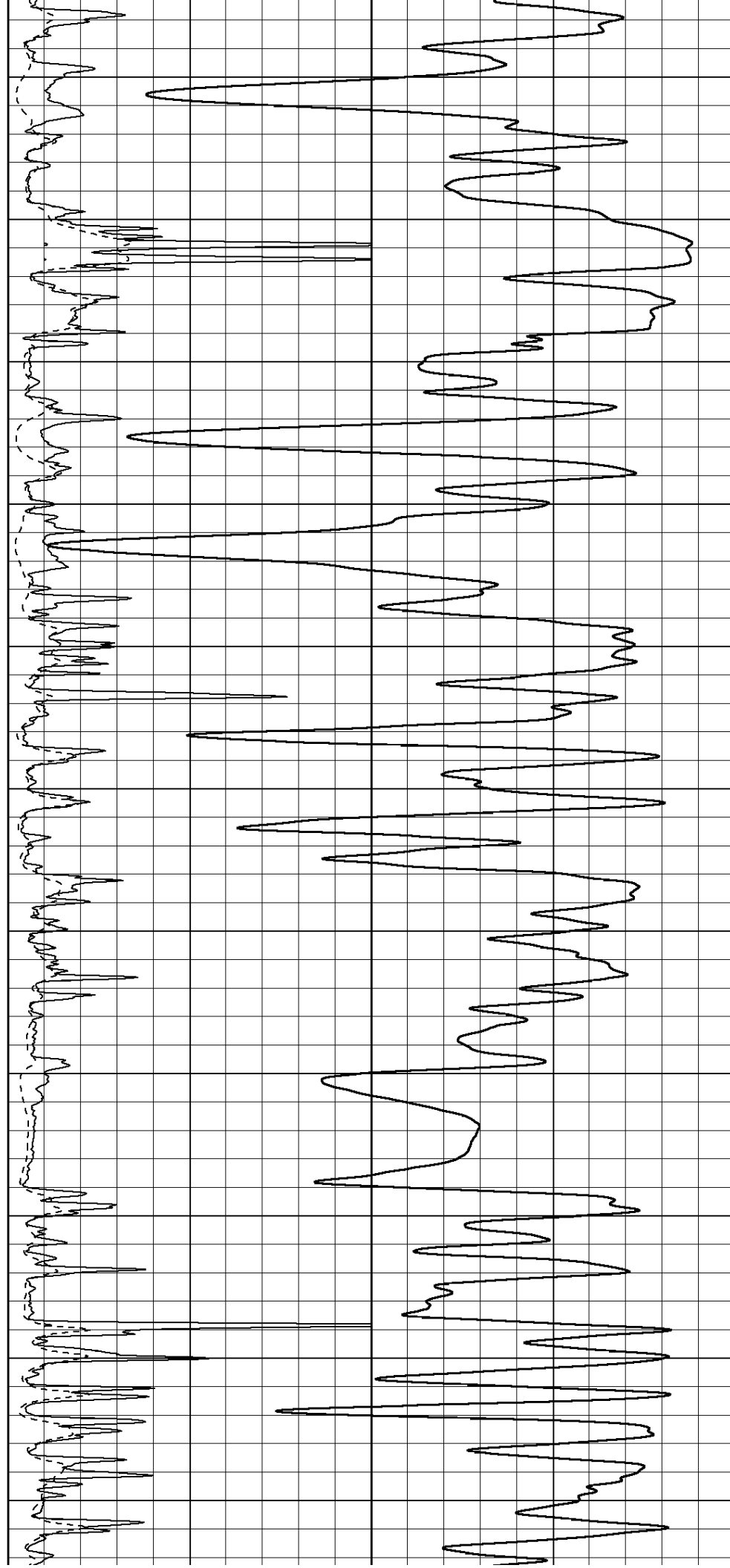
2950

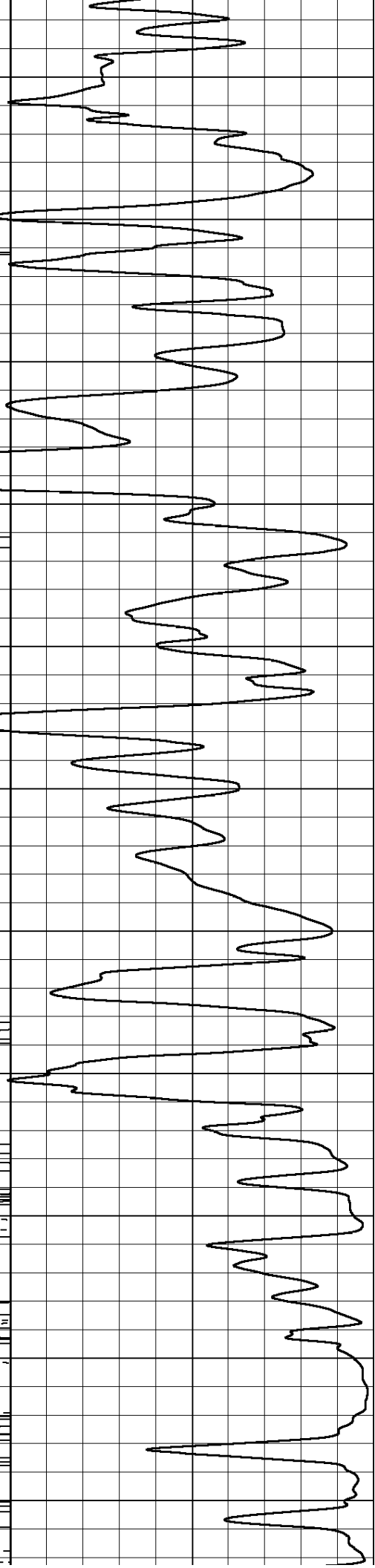
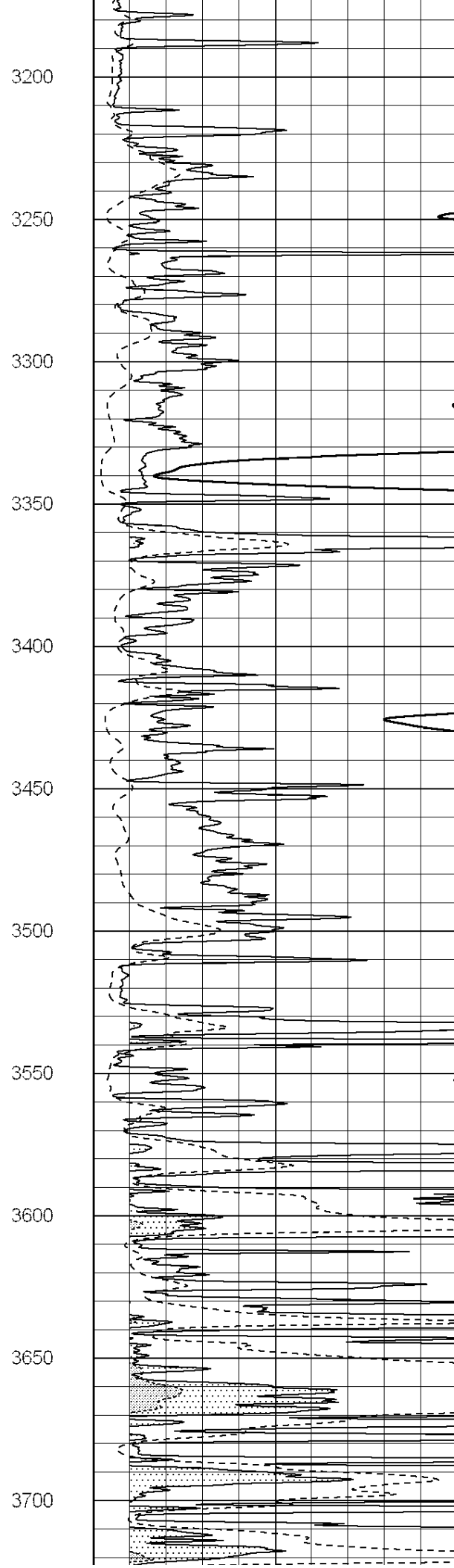
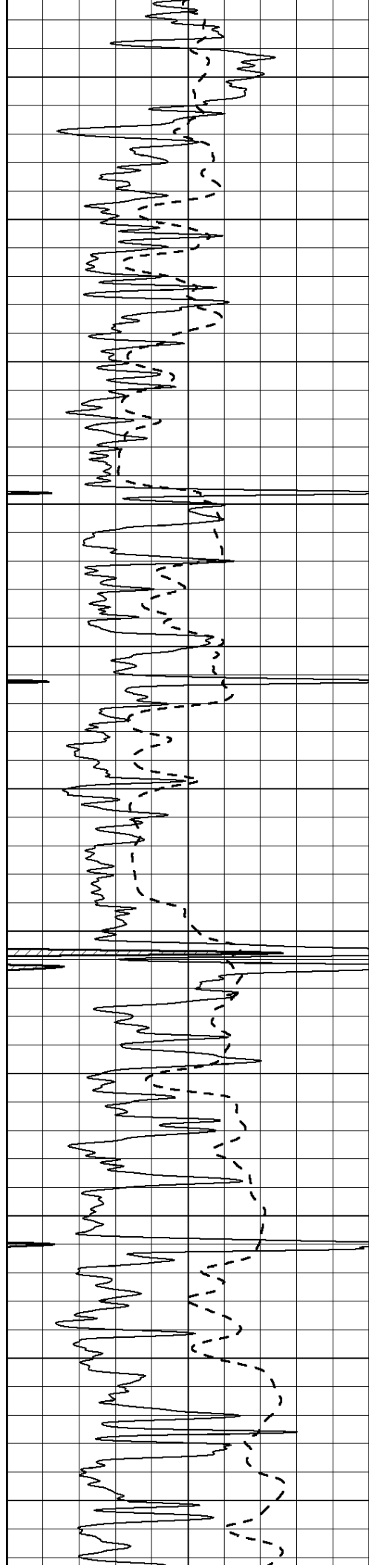
3000

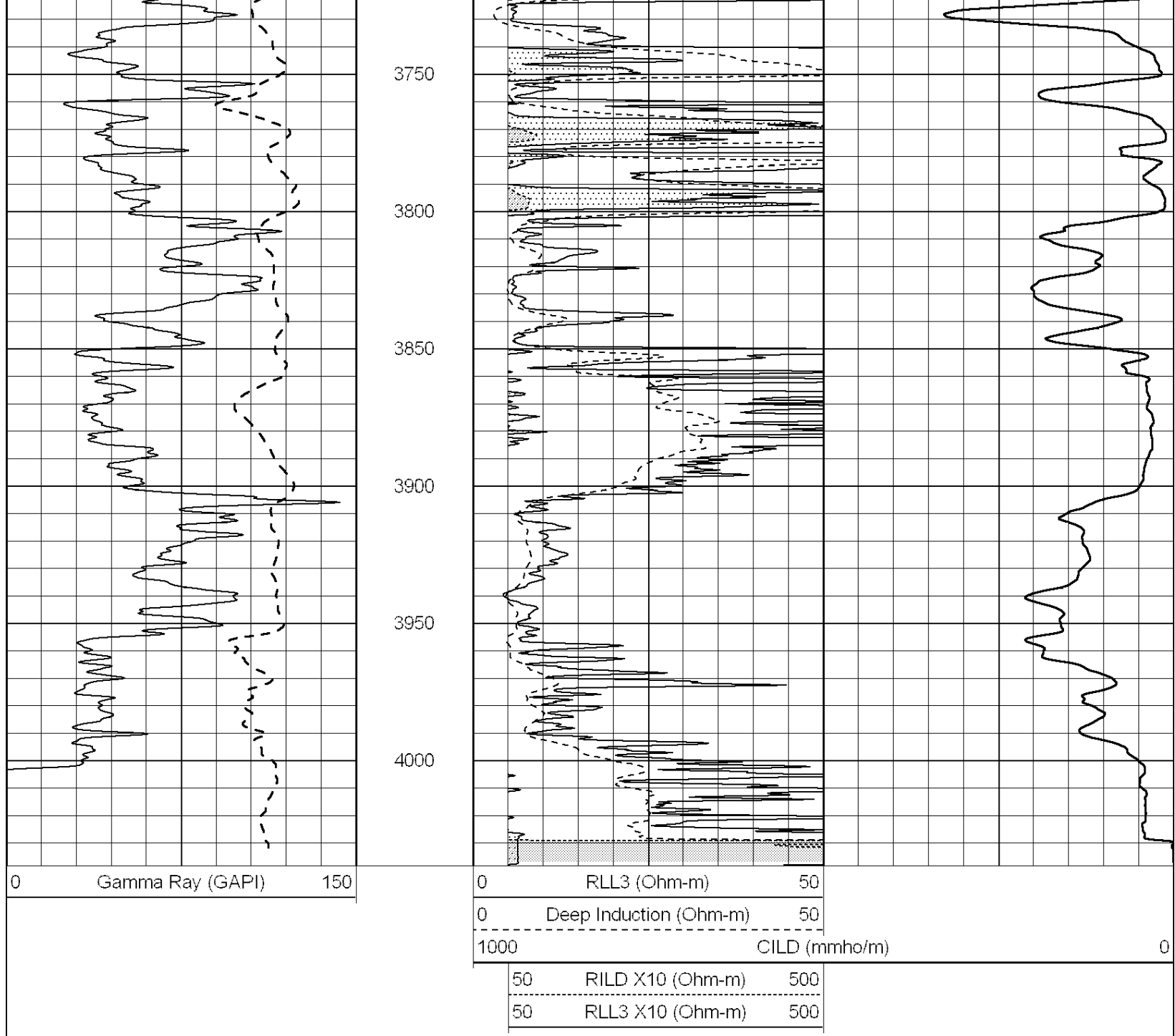
3050

3100

3150







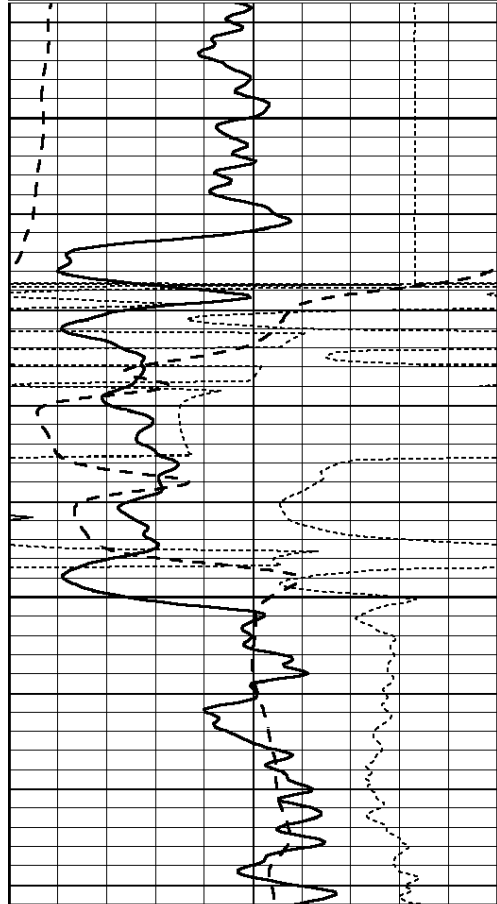
SUPERIOR
WELL SERVICES
Hays,
Kansas

MAIN SECTION

Database File: 009572ddn.db
 Dataset Pathname: pass3.2
 Presentation Format: dil
 Dataset Creation: Fri Aug 10 03:25:10 2012
 Charted by: Depth in Feet scaled 1:240

0	GAMMA RAY (GAPI)	150
-100	SP (mV)	100
-250	RxoRt	50
0	MINMK	20

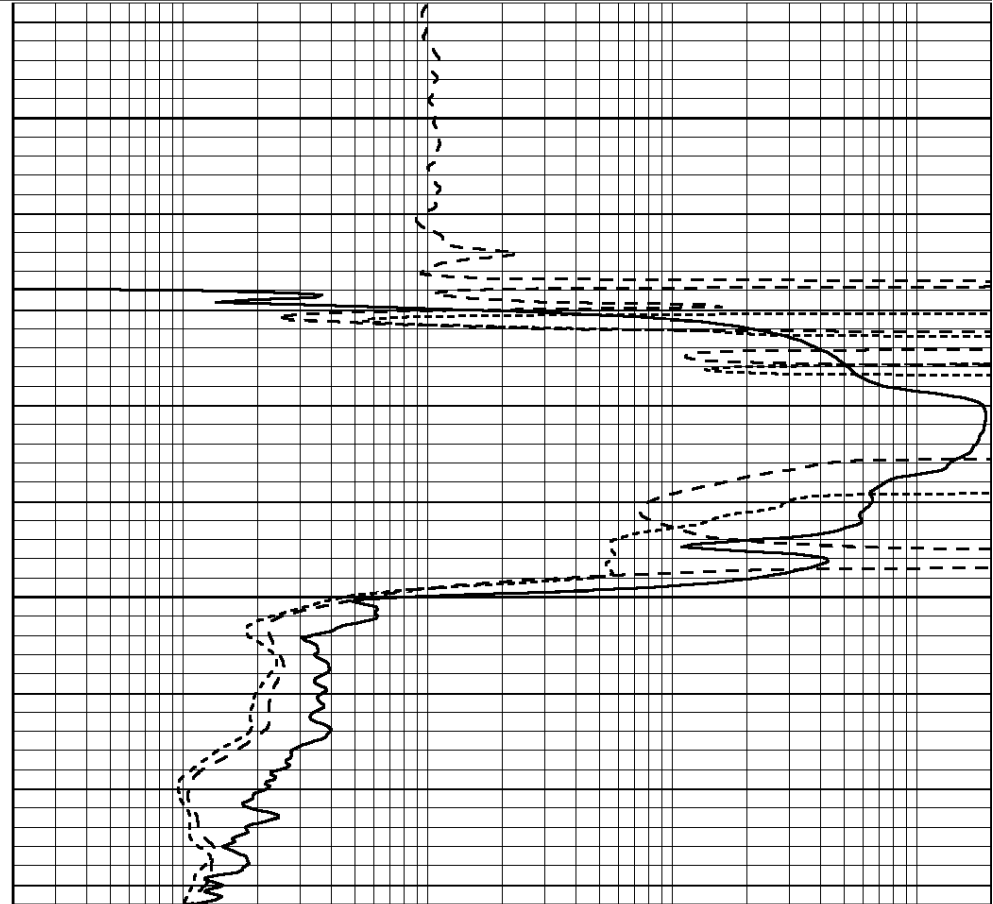
0.2	RLL3 (Ohm-m)	2000
0.2	DEEP INDUCTION (Ohm-m)	2000
0.2	MEDIUM INDUCTION (Ohm-m)	2000



1400

1450

0	GAMMA RAY (GAPI)	150
-100	SP (mV)	100
-250	RxoRt	50
0	MINMK	20



0.2	RLL3 (Ohm-m)	2000
0.2	DEEP INDUCTION (Ohm-m)	2000
0.2	MEDIUM INDUCTION (Ohm-m)	2000



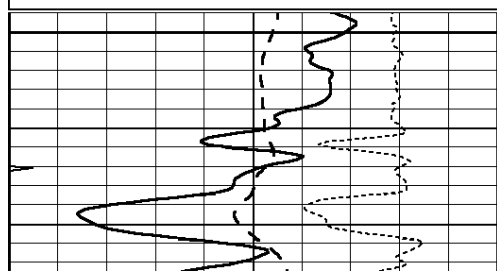
SUPERIOR
Hays,
Kansas

MAIN SECTION

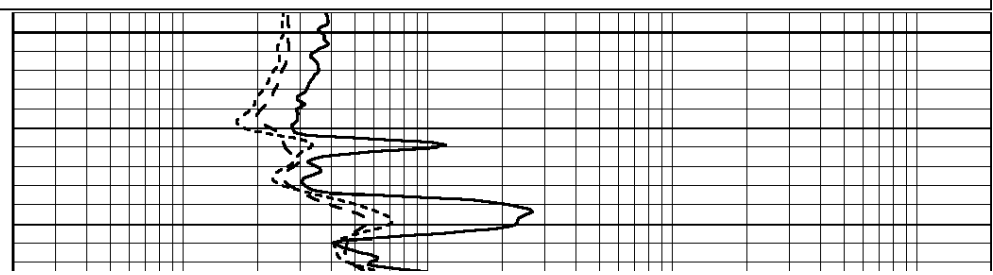
Database File: 009572ddn.db
 Dataset Pathname: pass3.2
 Presentation Format: dil
 Dataset Creation: Fri Aug 10 03:25:10 2012
 Charted by: Depth in Feet scaled 1:240

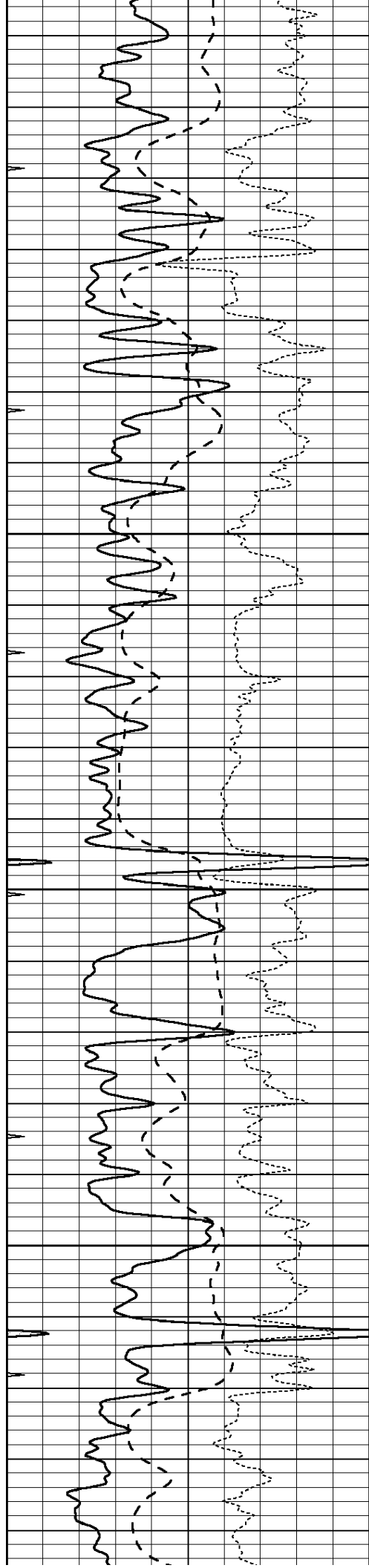
0	GAMMA RAY (GAPI)	150
-100	SP (mV)	100
-250	RxoRt	50
0	MINMK	20

0.2	RLL3 (Ohm-m)	2000
0.2	DEEP INDUCTION (Ohm-m)	2000
0.2	MEDIUM INDUCTION (Ohm-m)	2000



3200



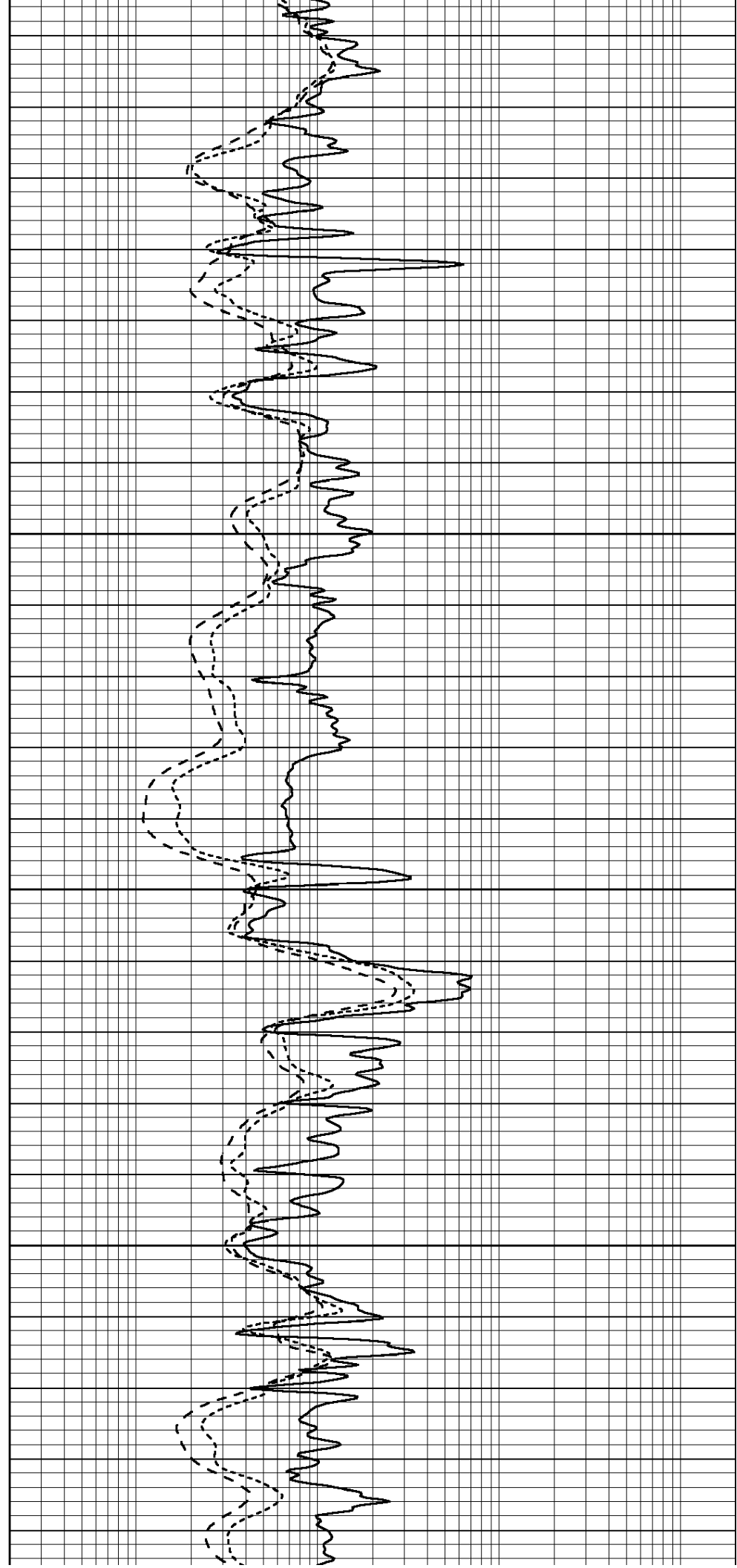


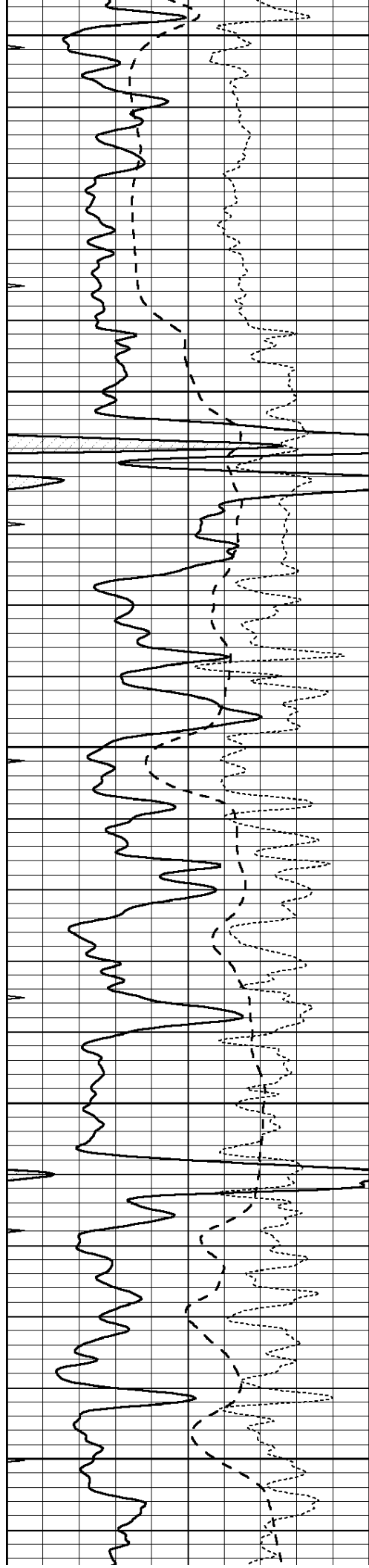
3250

3300

3350

3400





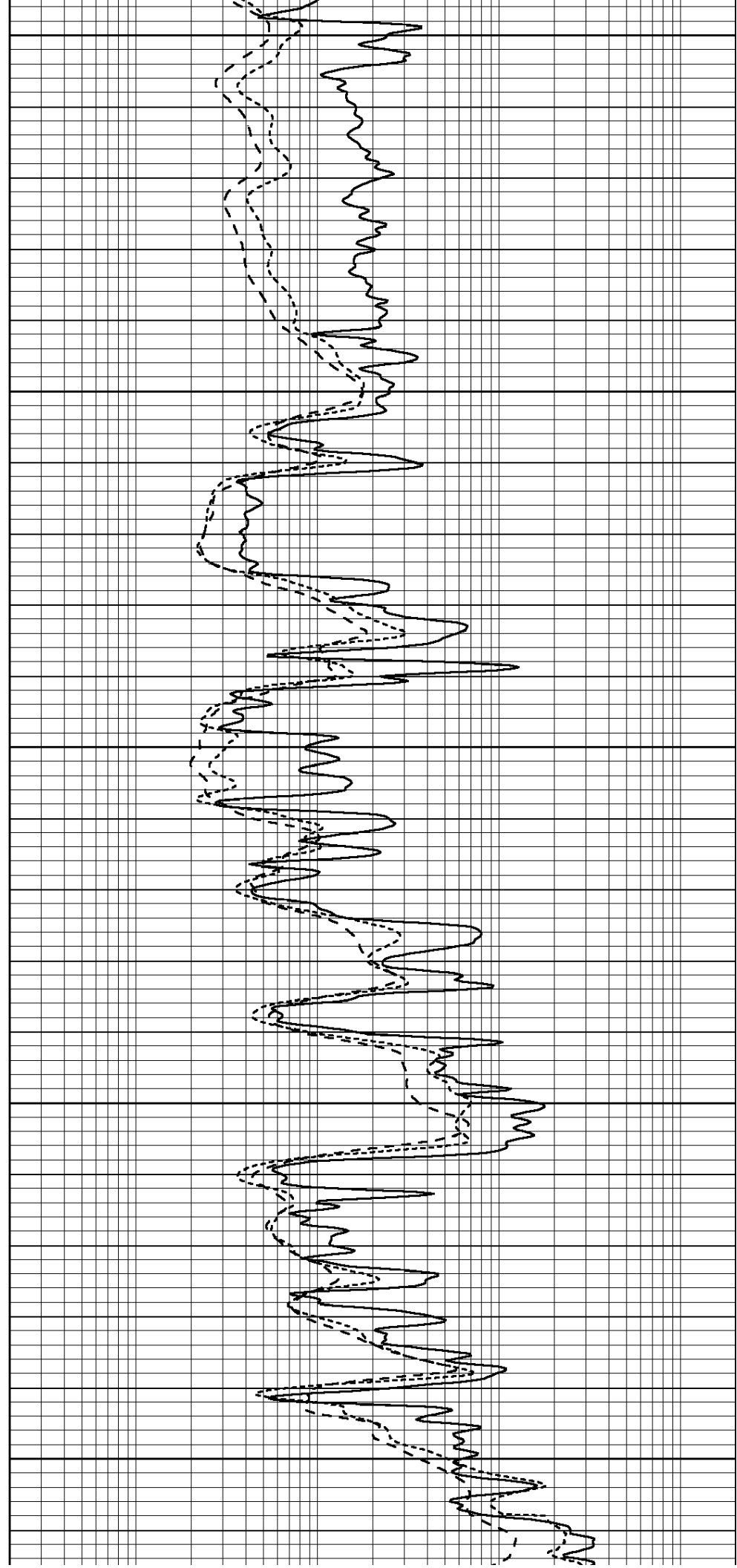
3450

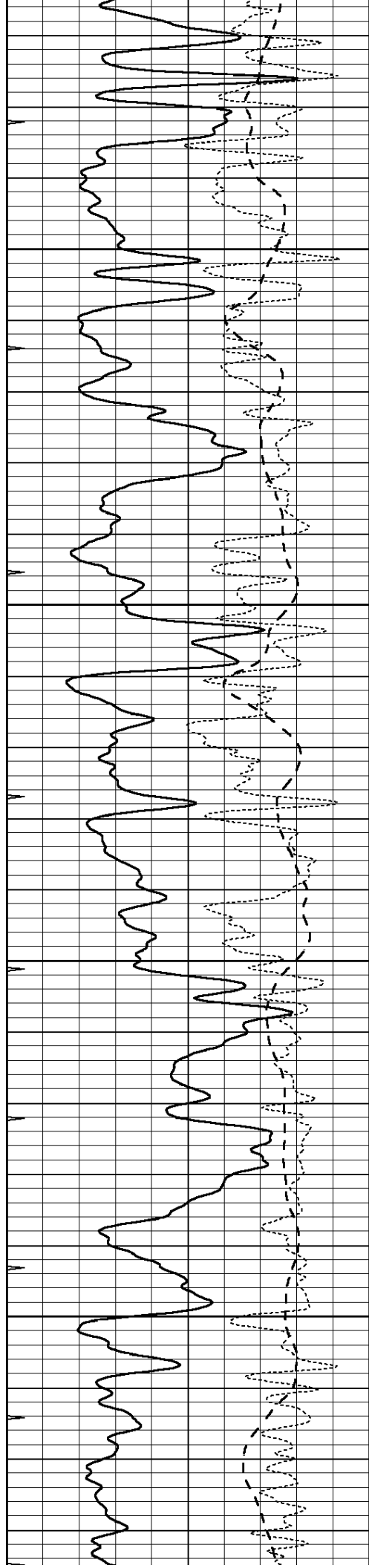
3500

3550

3600

3650



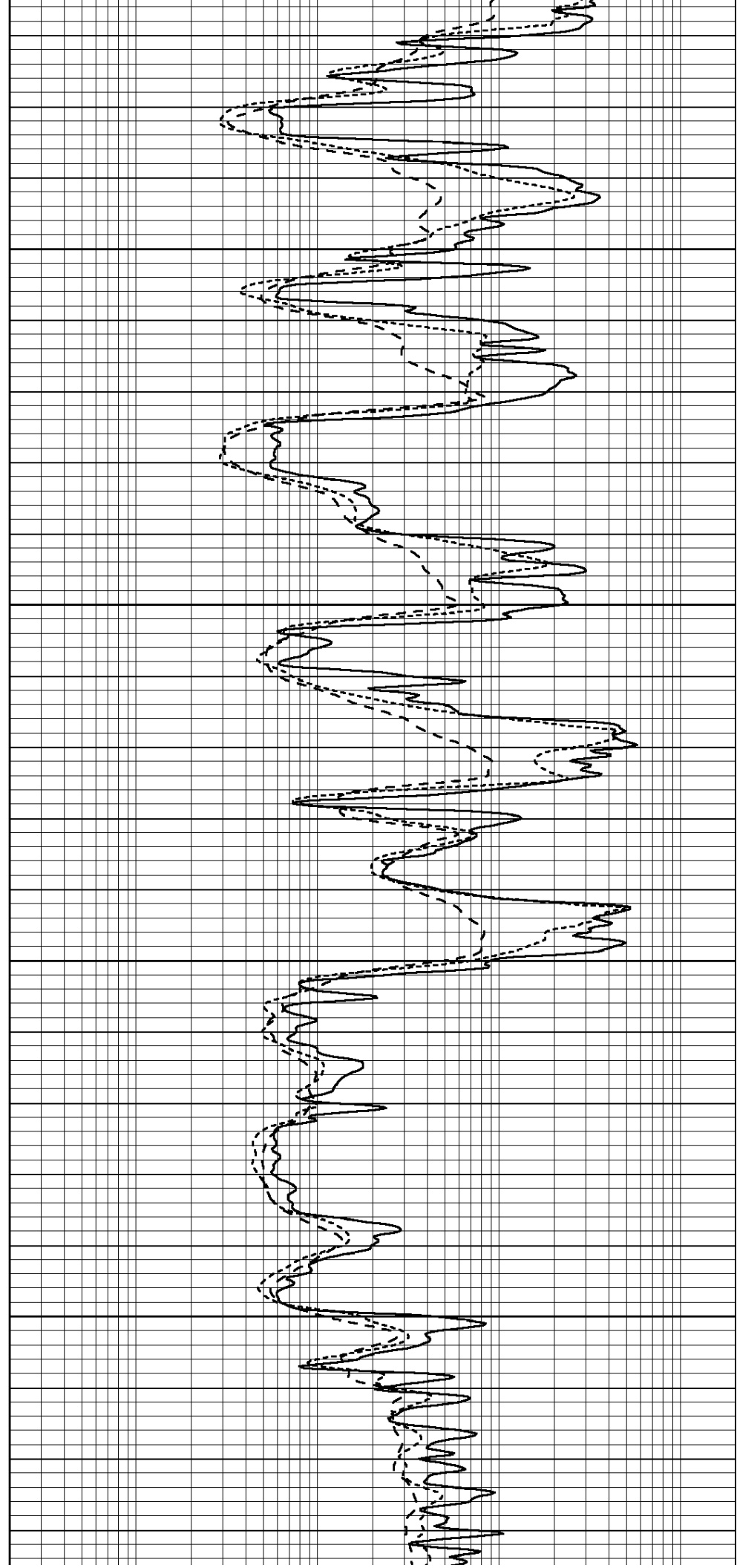


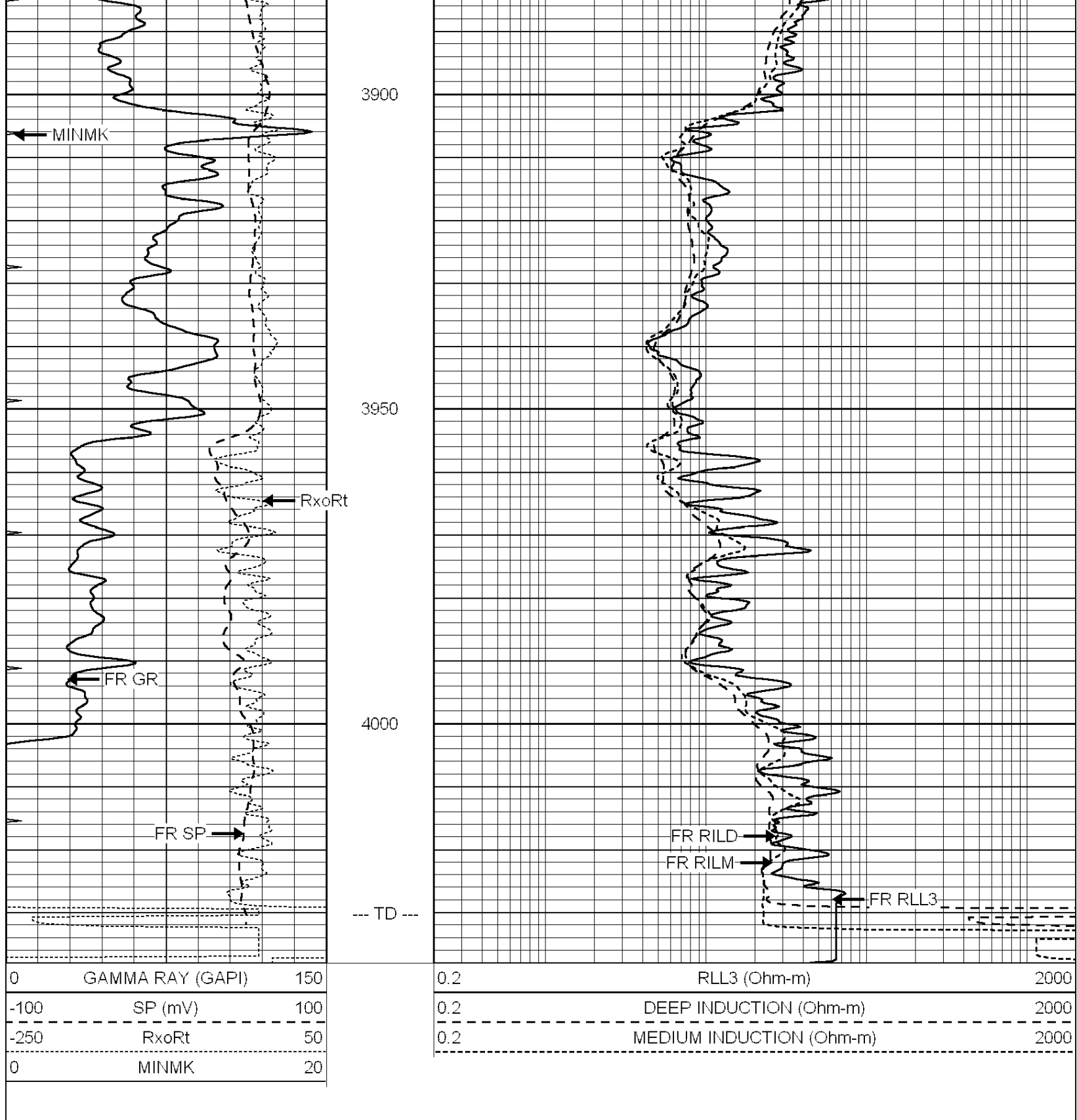
3700

3750

3800

3850





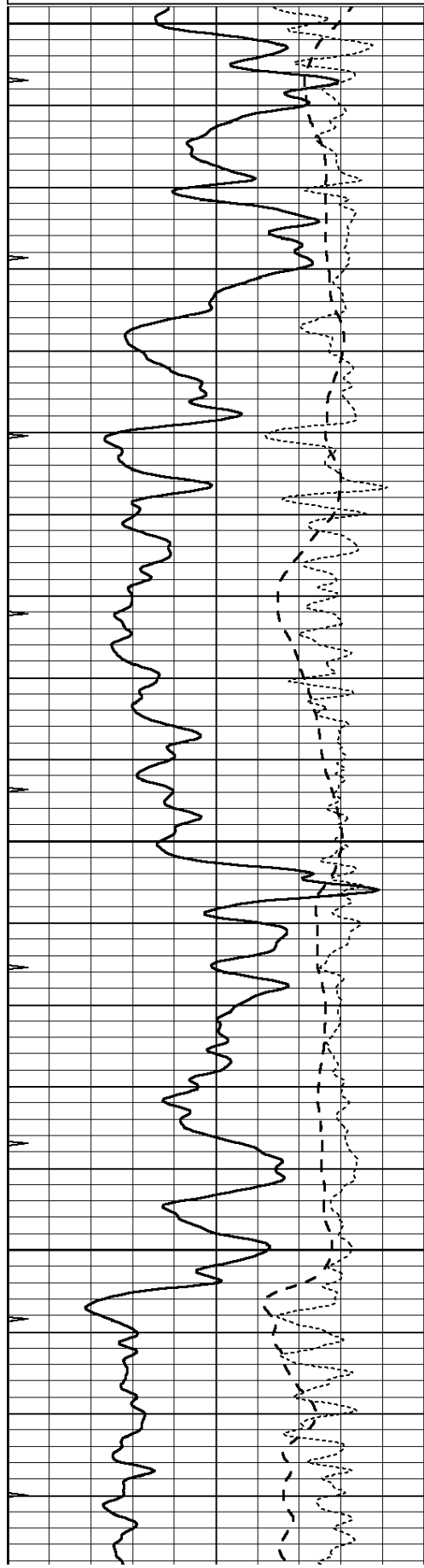
SUPERIOR
Hays,
Kansas

REPEAT SECTION

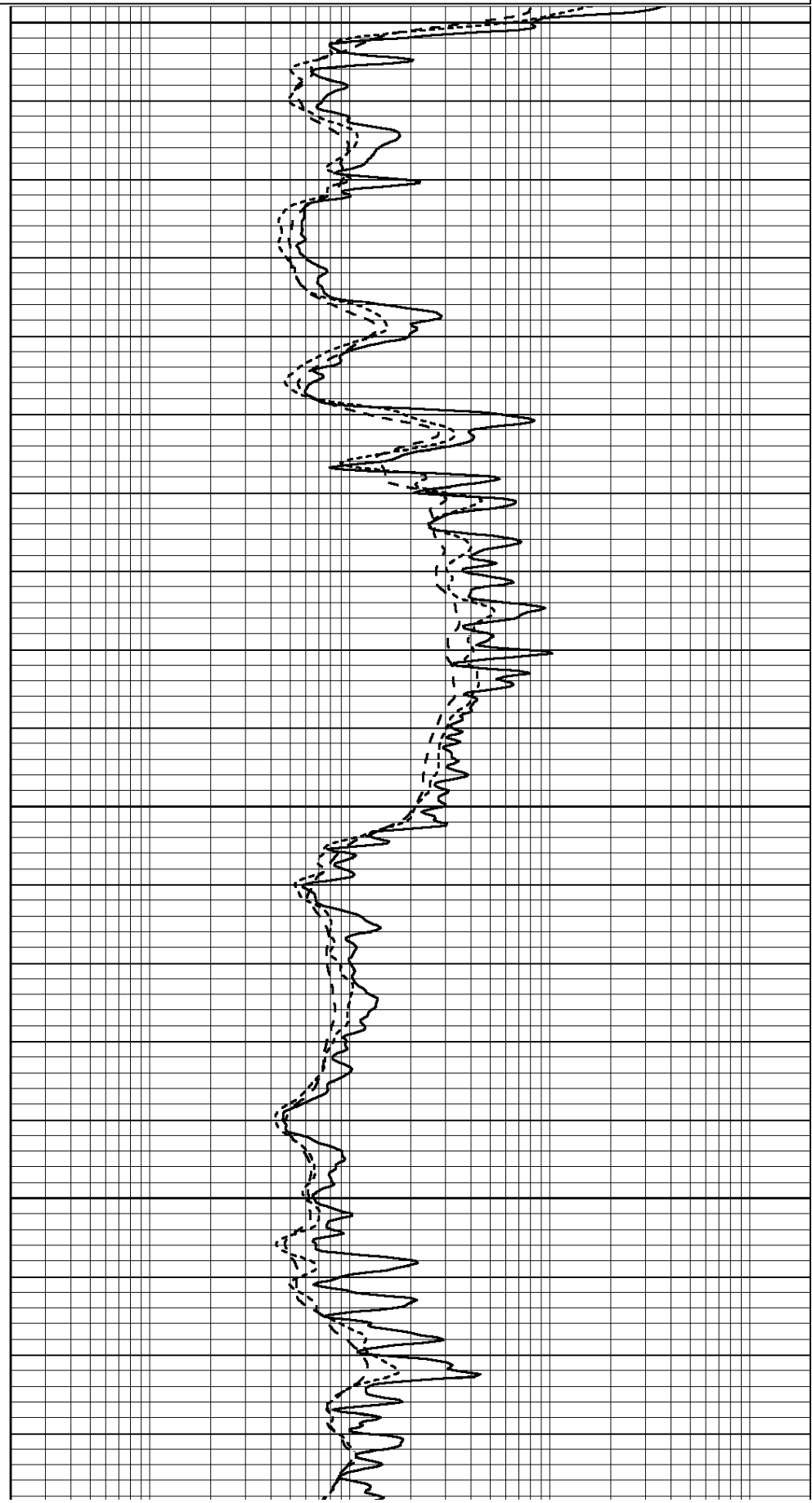
Database File: 009572ddn.db
 Dataset Pathname: pass2.1A
 Presentation Format: dil
 Dataset Creation: Fri Aug 10 03:15:23 2012 by Calc Open-Cased 090629
 Created by: [unclear] Depth in Feet scaled 1:240

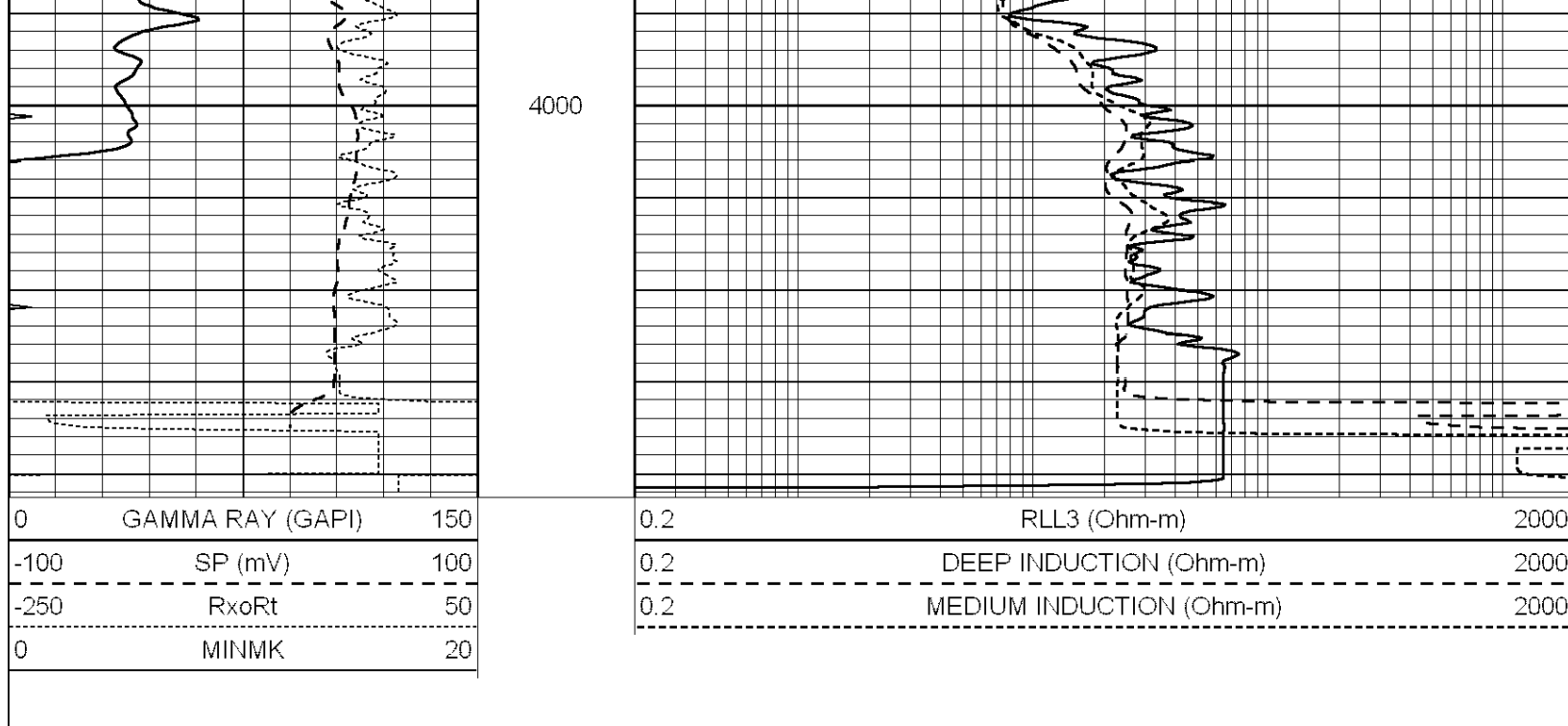
0	GAMMA RAY (GAPI)	150
-100	SP (mV)	100
-250	RxoRt	50
0	MINMK	20

0.2	RLL3 (Ohm-m)	2000
0.2	DEEP INDUCTION (Ohm-m)	2000
0.2	MEDIUM INDUCTION (Ohm-m)	2000



3800
3850
3900
3950





Calibration Report

Database File: 009572ddn.db
 Dataset Pathname: pass3.2
 Dataset Creation: Fri Aug 10 03:25:10 2012

Dual Induction Calibration Report

Serial-Model: DIL5-GEAR
 Performed: Fri Aug 10 02:37:06 2012

Loop:	Readings			References			Results	
	Air	Loop		Air	Loop		m	b
Deep	0.004	0.654	V	0.000	400.000	mmho/m	490.000	-12.000
Medium	-0.005	0.737	V	0.000	462.500	mmho/m	530.000	-12.000
Internal:	Zero	Cal		Zero	Cal		m	b
Deep	0.006	0.655	V	0.000	400.000	mmho/m	615.668	-3.483
Medium	0.010	0.747	V	0.000	462.500	mmho/m	627.607	-6.064

Compensated Density Calibration Report

Serial-Model: GEAR1-GEARHART
 Source / Verifier: 147 / 147
 Master Calibration Performed: Fri Aug 10 00:21:04 2012

Master Calibration

	Density		Far Detector	Near Detector	
Magnesium	1.710	g/cc	1466.47	701.47	cps
Aluminum	2.590	g/cc	331.27	493.53	cps
Spine Angle = 76.70			Density/Spine Ratio = 0.576		
	Size		Reading		
Small Ring	9.40	in	4.81	V	
Large Ring	14.00	in	6.56	V	

Compensated Neutron Calibration Report

Serial Number: NUE_2I
 Tool Model: G

CALIBRATION

Detector	Readings	Target	Normalization
Short Space	1.00 cps	1.00 cps	1.0000
Long Space	1.00 cps	1.00 cps	1.0000

Gamma Ray Calibration Report

Serial Number: GR2
 Tool Model: OPEN
 Performed: Fri Aug 10 02:35:13 2012

Calibrator Value: 200.0 GAPI

Background Reading: 0.0 cps
 Calibrator Reading: 740.0 cps

Sensitivity: 0.7500 GAPI/cps