



**SUPERIOR  
Hays,  
Kansas**

**COMPENSATED  
DENSITY / NEUTRON  
LOG**

Company TRANS PACIFIC OIL CORPORATION  
Well LEGLEITER "A" #1-14  
Field KEOUGH NORTH EAST  
County RUSH  
State KANSAS

Company TRANS PACIFIC OIL CORPORATION  
Well LEGLEITER "A" #1-14  
Field KEOUGH NORTH EAST  
County RUSH State KANSAS

Location: API #: 15-165-21985  
990' FNL & 2310' FWL  
SEC 14 TWP 16S RGE 20W  
Other Services  
DIL  
Elevation  
Permanent Datum GROUND LEVEL Elevation 2170  
Log Measured From KELLY BUSHING 10' A.G.L.  
Drilling Measured From KELLY BUSHING G.L. 2170

Date	8-10-12
Run Number	ONE
Depth Driller	4030
Depth Logger	4030
Bottom Logged Interval	4006
Top Log Interval	3200
Casing Driller	1420
Casing Logger	1420
Bit Size	7.875
Type Fluid in Hole	CHEMICAL MUD
Density / Viscosity	9.3 / 54
pH / Fluid Loss	11.0 / 9.2
Source of Sample	FLOWLINE
Rim @ Meas. Temp	0.85 @ 86F
Rmf @ Meas. Temp	0.64 @ 86F
Rmc @ Meas. Temp	1.02 @ 86F
Source of Rmf / Rmc	MEASURED
Rim @ BHT	.640 @ 115F
Time Circulation Stopped	3 HOURS
Time Logger on Bottom	2:00 A.M.
Maximum Recorded Temperature	115F
Equipment Number	860
Location	HAYS, KS.
Recorded By	RUPP
Witnessed By	CRISTINA GOODRICH

<<< Fold Here >>>

All interpretations are opinions based on inferences from electrical or other measurements and we cannot and do not guarantee the accuracy or correctness of any interpretation, and we shall not, except in the case of gross or willful negligence on our part, be liable or responsible for any loss, costs, damages, or expenses incurred or sustained by anyone resulting from any interpretation made by any of our officers, agents or employees. These interpretations are also subject to our general terms and conditions set out in our current Price Schedule.

Comments

SUPERIOR WELL SERVICES  
785-628-6395  
THANK YOU FOR YOUR BUSINESS  
DIRECTIONS: LEIBENTHAL, 1S TO BLACKTOP, 9W TO RD. #150, 2N, 1/2W, S INTO.

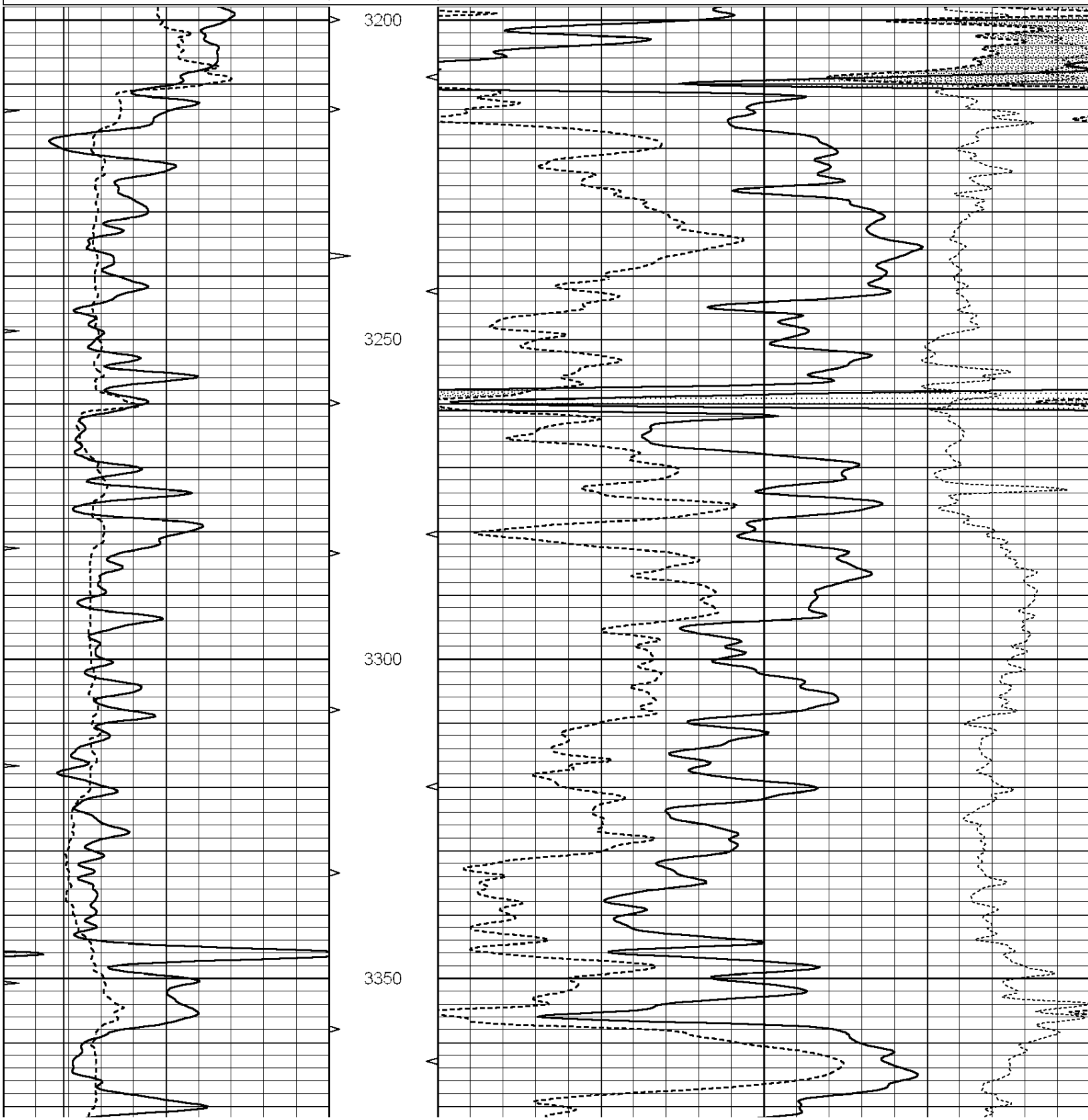


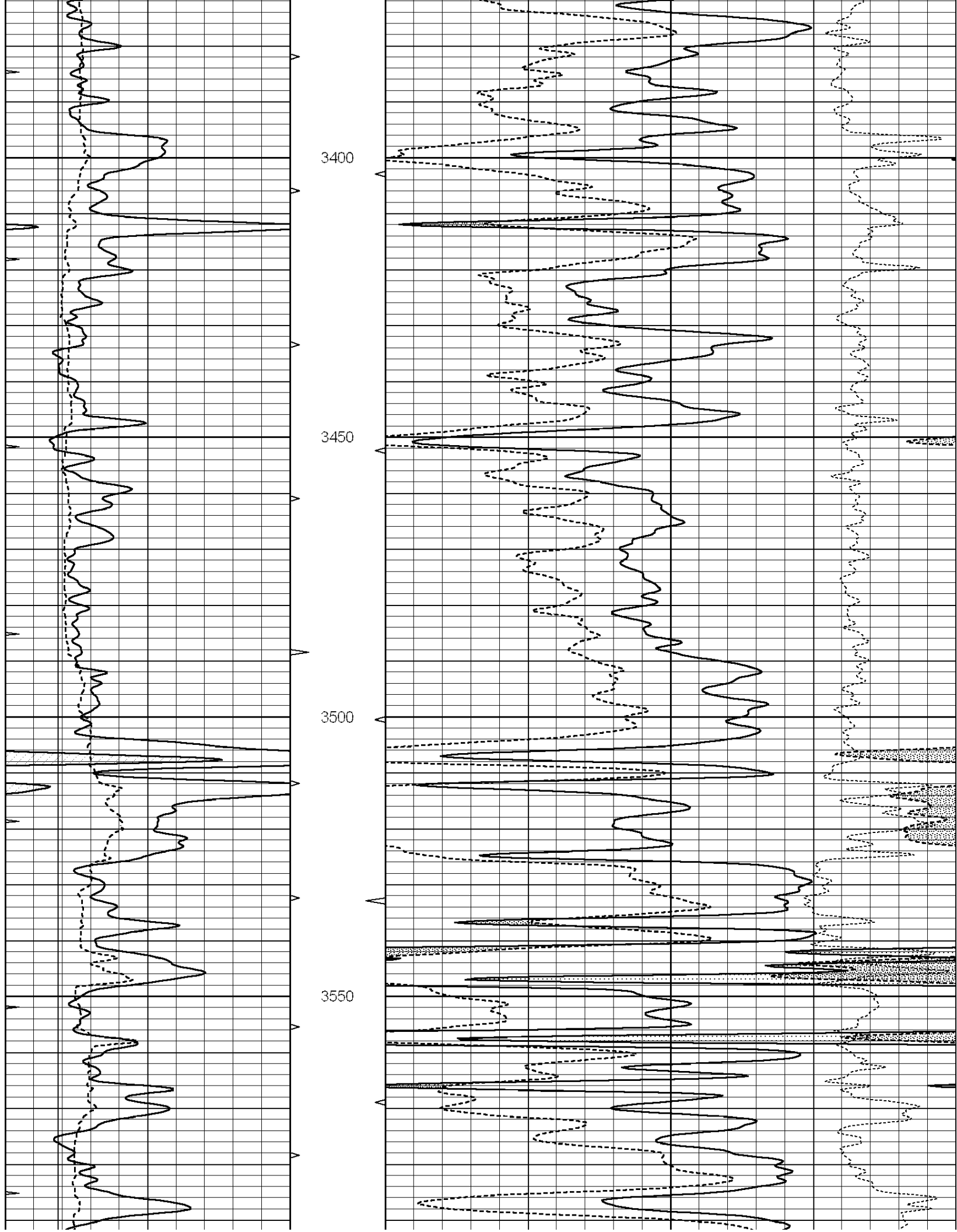
**SUPERIOR  
Hays,  
Kansas**

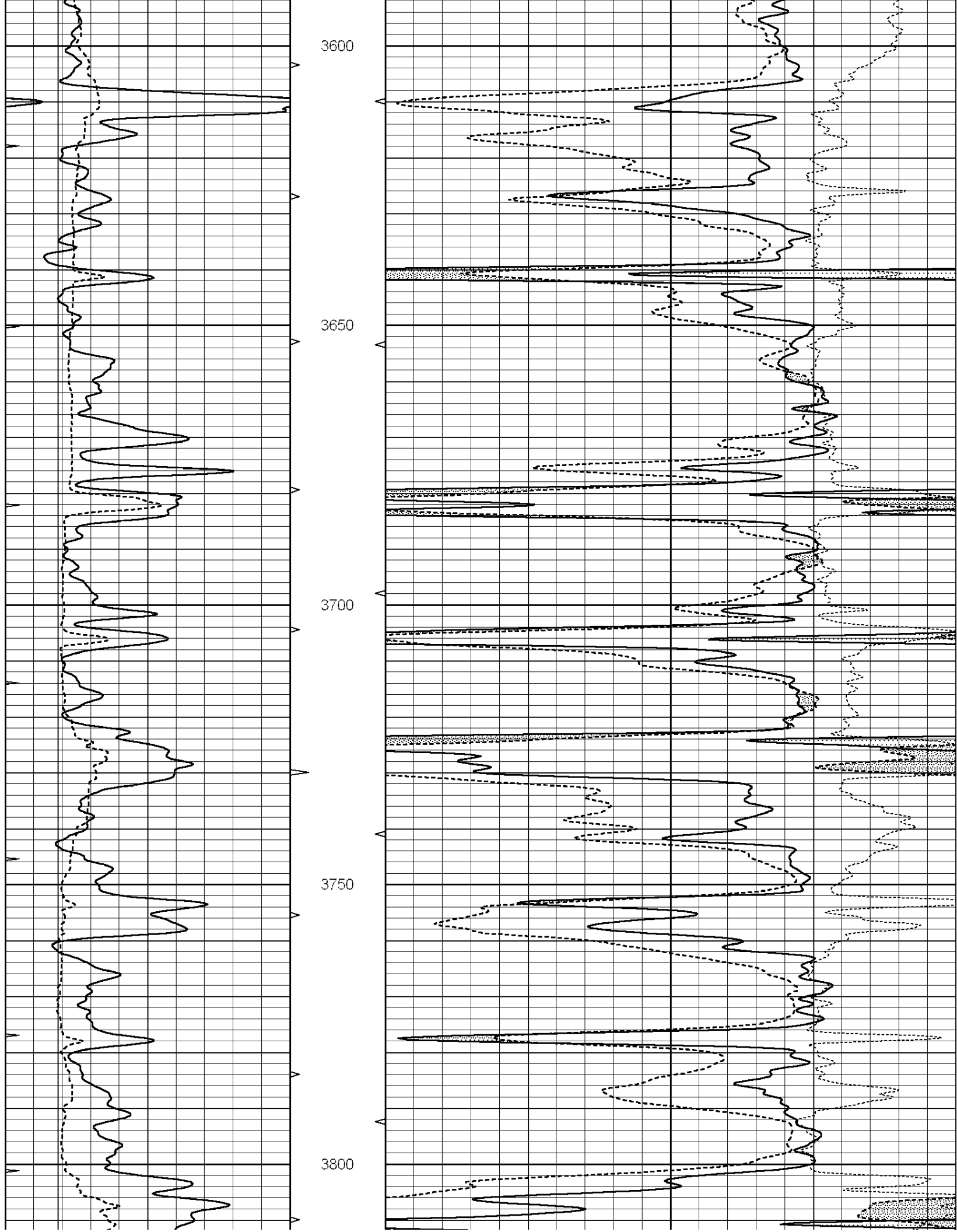
**MAIN SECTION**

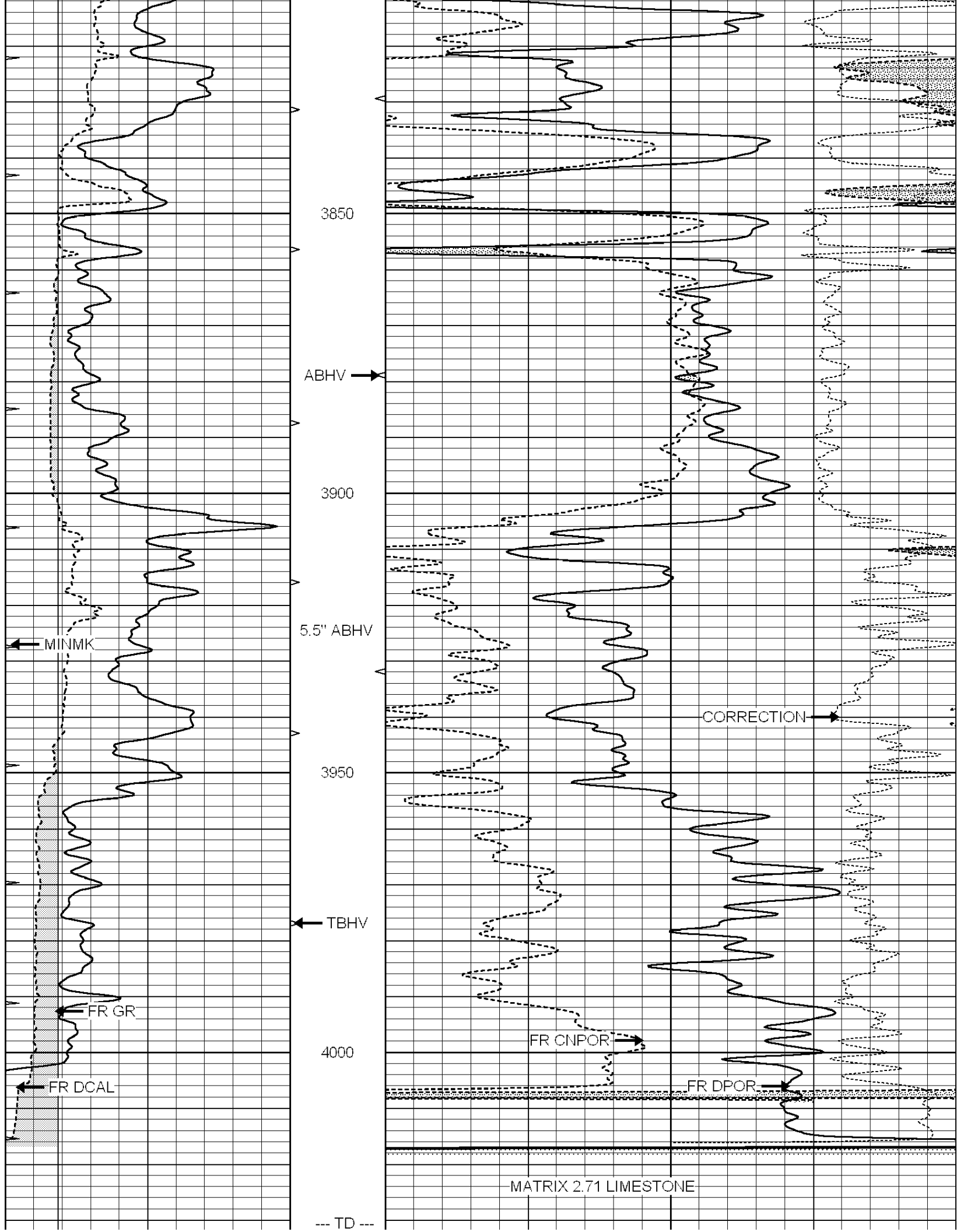
Database File: 009572ddn.db  
 Dataset Pathname: pass3.2  
 Presentation Format: den\_neu  
 Dataset Creation: Fri Aug 10 03:25:10 2012  
 Charted by: Depth in Feet scaled 1:240

0	GAMMA RAY (GAPI)	150	ABHV	30	COMPENSATED DENSITY (pu)	-10
6	CALIPER (in)	16	10 (ft3)	0 30	COMPENSATED NEUTRON (pu)	-10
0	MINMK	20	TBHV		-0.25 CORRECTION (g/cc)	0.25
			0 (ft3)	10		









0	GAMMA RAY (GAPI)	150	ABHV	30	COMPENSATED DENSITY (pu)	-10
6	CALIPER (in)	16	10 (ft3)	0 30	COMPENSATED NEUTRON (pu)	-10
0	MINMK	20	TBHV		-0.25 CORRECTION (g/cc)	0.25
			0 (ft3)	10		

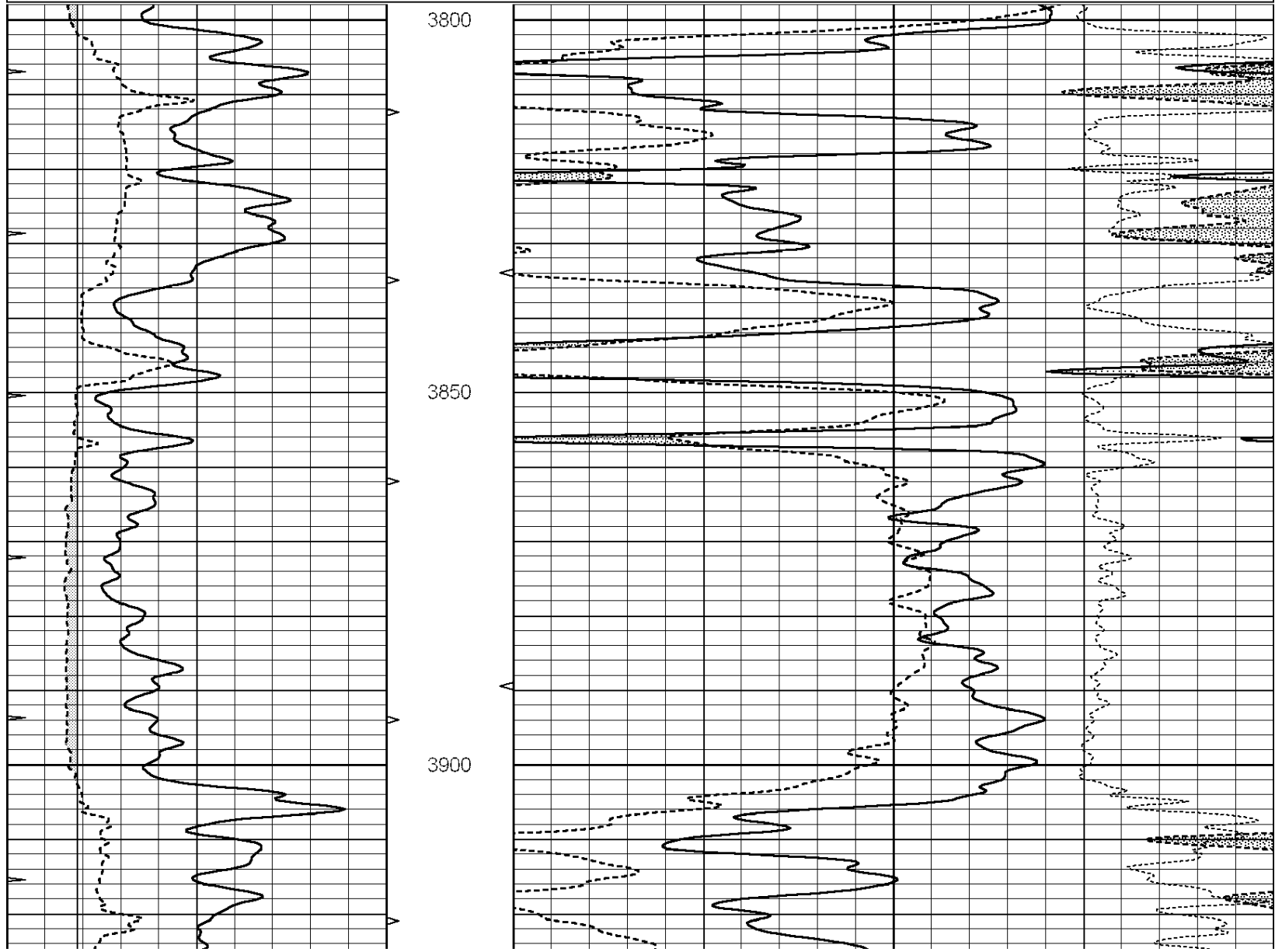


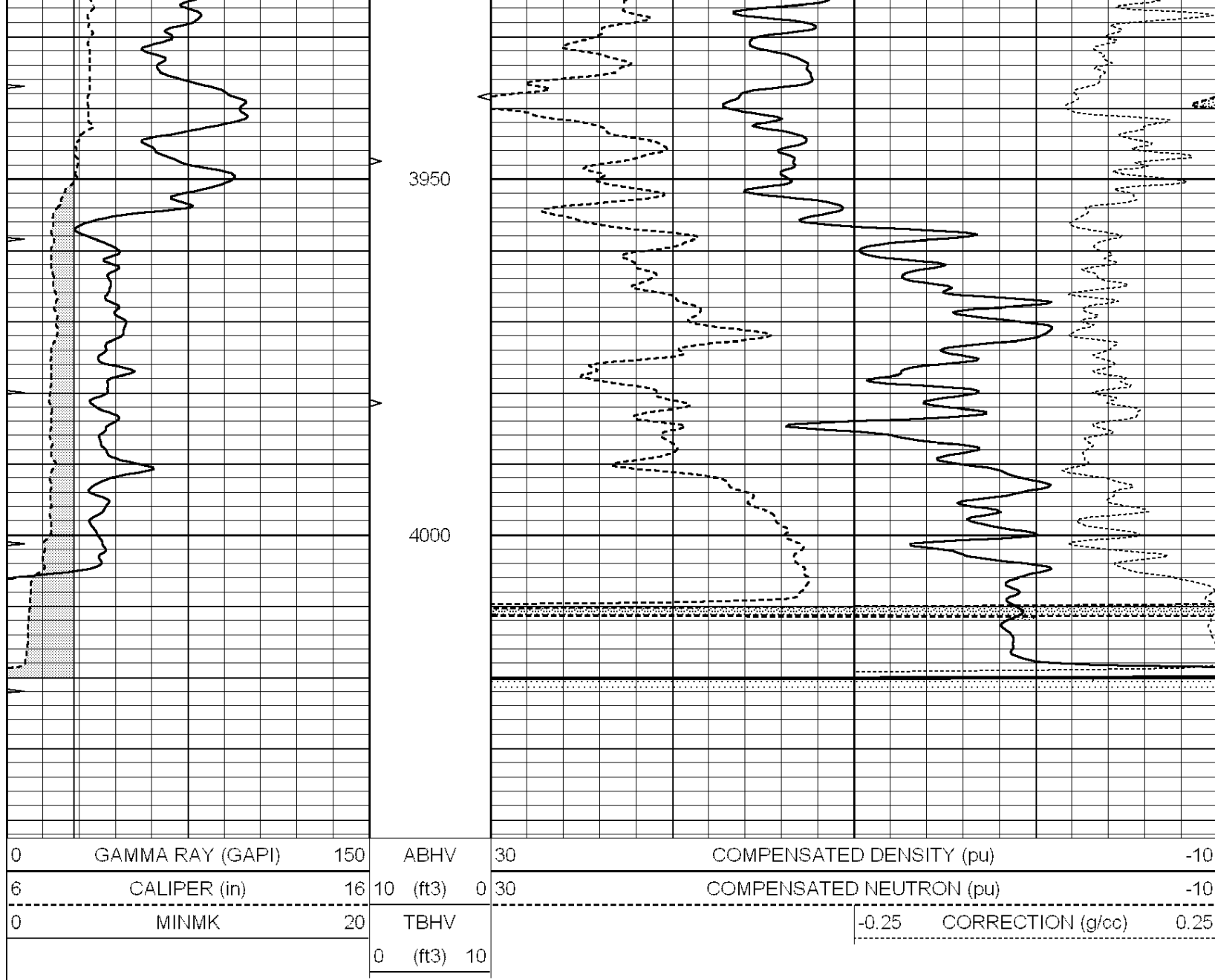
SUPERIOR  
Hays,  
Kansas

# REPEAT SECTION

Database File: 009572ddn.db  
 Dataset Pathname: pass2.1A  
 Presentation Format: den\_neu  
 Dataset Creation: Fri Aug 10 03:15:23 2012 by Calc Open-Cased 090629  
 Charted by: Depth in Feet scaled 1:240

0	GAMMA RAY (GAPI)	150	ABHV	30	COMPENSATED DENSITY (pu)	-10
6	CALIPER (in)	16	10 (ft3)	0 30	COMPENSATED NEUTRON (pu)	-10
0	MINMK	20	TBHV		-0.25 CORRECTION (g/cc)	0.25
			0 (ft3)	10		





### Calibration Report

Database File: 009572ddn.db  
 Dataset Pathname: pass3.2  
 Dataset Creation: Fri Aug 10 03:25:10 2012

### Dual Induction Calibration Report

Serial-Model: DIL5-GEAR  
 Performed: Fri Aug 10 02:37:06 2012

Loop:	Readings			References			Results	
	Air	Loop		Air	Loop	mmho/m	m	b
Deep	0.004	0.654	V	0.000	400.000	mmho/m	490.000	-12.000
Medium	-0.005	0.737	V	0.000	462.500	mmho/m	530.000	-12.000
Internal:	Zero	Cal		Zero	Cal	mmho/m	m	b
Deep	0.006	0.655	V	0.000	400.000	mmho/m	615.668	-3.483
Medium	0.010	0.747	V	0.000	462.500	mmho/m	627.607	-6.064

### Compensated Density Calibration Report

Serial-Model:  
Source / Verifier:  
Master Calibration Performed:

GEAR1-GEARHART  
147 / 147  
Fri Aug 10 00:21:04 2012

Master Calibration

	Density		Far Detector	Near Detector	
Magnesium	1.710	g/cc	1466.47	701.47	cps
Aluminum	2.590	g/cc	331.27	493.53	cps
Spine Angle = 76.70			Density/Spine Ratio = 0.576		
	Size		Reading		
Small Ring	9.40	in	4.81	V	
Large Ring	14.00	in	6.56	V	

Compensated Neutron Calibration Report

Serial Number: NUE\_2I  
Tool Model: G

CALIBRATION

Detector	Readings		Target		Normalization
Short Space	1.00	cps	1.00	cps	1.0000
Long Space	1.00	cps	1.00	cps	1.0000

Gamma Ray Calibration Report

Serial Number: GR2  
Tool Model: OPEN  
Performed: Fri Aug 10 02:35:13 2012

Calibrator Value: 200.0 GAPI

Background Reading: 0.0 cps  
Calibrator Reading: 740.0 cps

Sensitivity: 0.7500 GAPI/cps