



**COMPLETION
& PRODUCTION
SERVICES CO.**

**COMPENSATED
DENSITY / NEUTRON
LOG**

Company MUSTANG ENERGY CORPORATION
Well De YOUNG #3
Field COPPER
County GRAHAM
State KANSAS

Company MUSTANG ENERGY CORPORATION
Well De YOUNG #3
Field COPPER
County GRAHAM State KANSAS

Location: API # : 15-065-23874-0000
330' FNL & 2120' FEL
E/2 - NW - NW - NE
SEC 11 TWP 10S RGE 21W
Permanent Datum GROUND LEVEL Elevation 2262
Log Measured From KELLY BUSHING 5' A.G.L.
Drilling Measured From KELLY BUSHING
Other Services DILMEL
Elevation K.B. 2267
D.F. 2265
G.L. 2262

Date	10/19/12
Run Number	ONE
Depth Driller	3990
Depth Logger	3990
Bottom Logged Interval	3966
Top Log Interval	3200
Casing Driller	8 5/8"@208'
Casing Logger	208
Bit Size	7 7/8"
Type Fluid in Hole	CHEMICAL MUD
Density / Viscosity	9.4/52
pH / Fluid Loss	9.0/8.8
Source of Sample	FLOWLINE
Rm @ Meas. Temp	.850@76F
Rmt @ Meas. Temp	.636@76F
Rmc @ Meas. Temp	1.02@76F
Source of Rmf / Rmc	MEASUREMENT
Rm @ BHT	.579@116F
Time Circulation Stopped	2.5 HOURS
Time Logger on Bottom	9:30 P.M.
Maximum Recorded Temperature	116F
Equipment Number	4010
Location	HAYS, KANSAS
Recorded By	JEFF LUEBBERS
Witnessed By	HERB DEINES

<<< Fold Here >>>

All interpretations are opinions based on inferences from electrical or other measurements and we cannot and do not guarantee the accuracy or correctness of any interpretation, and we shall not, except in the case of gross or willful negligence on our part, be liable or responsible for any loss, costs, damages, or expenses incurred or sustained by anyone resulting from any interpretation made by any of our officers, agents or employees. These interpretations are also subject to our general terms and conditions set out in our current Price Schedule.

Comments

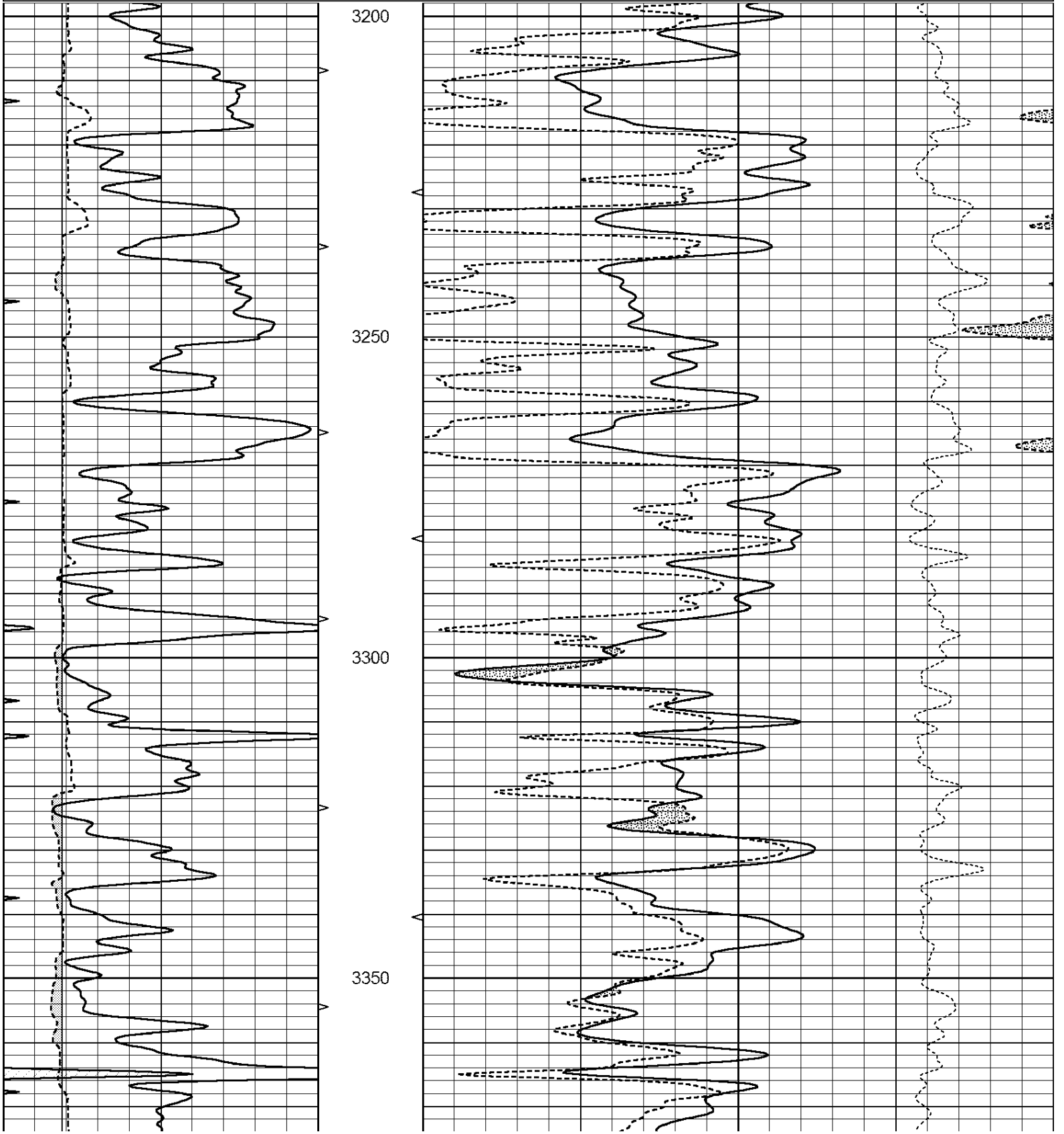
THANK YOU FOR USING SUPERIOR WELL SERVICE HAYS, KANSAS (785) 628-6395
DIRECTIONS
PALCO, KS., 2S. ON BLKTOP TO "RD. Y", 3W. TO "390 AVE.", 1 1/2S., W. INTO BETWEEN TANK BATTERI

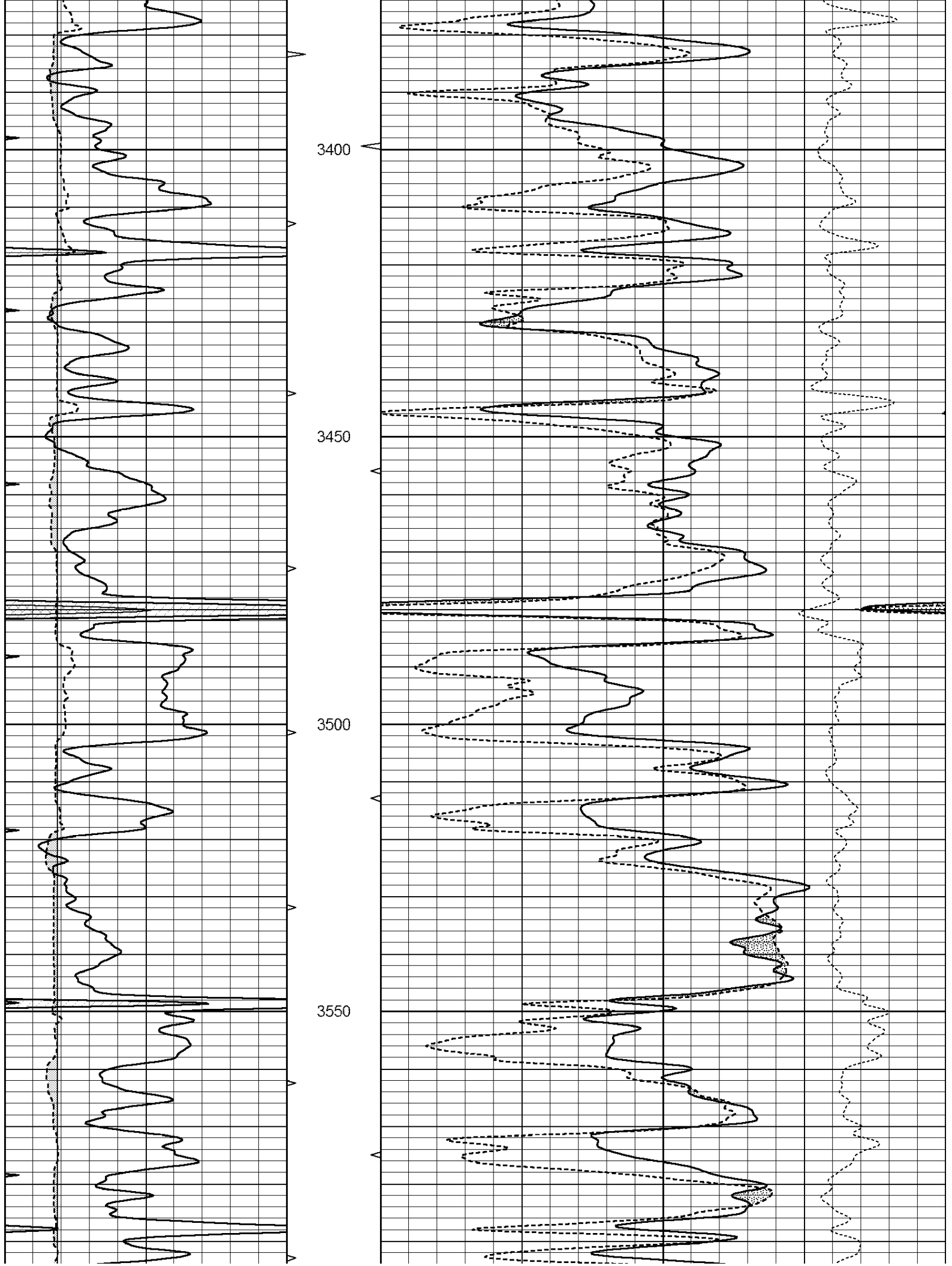


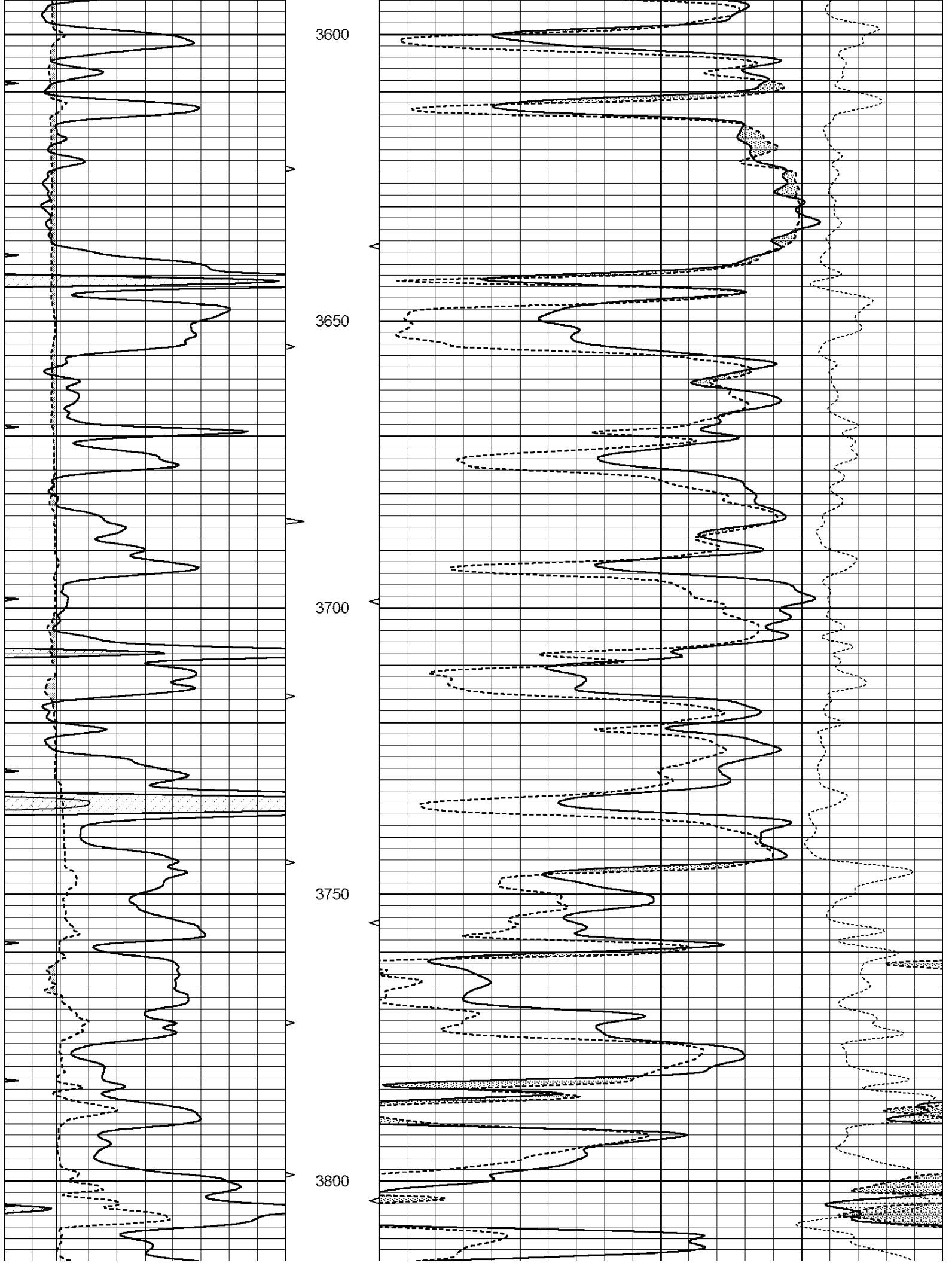
MAIN SECTION

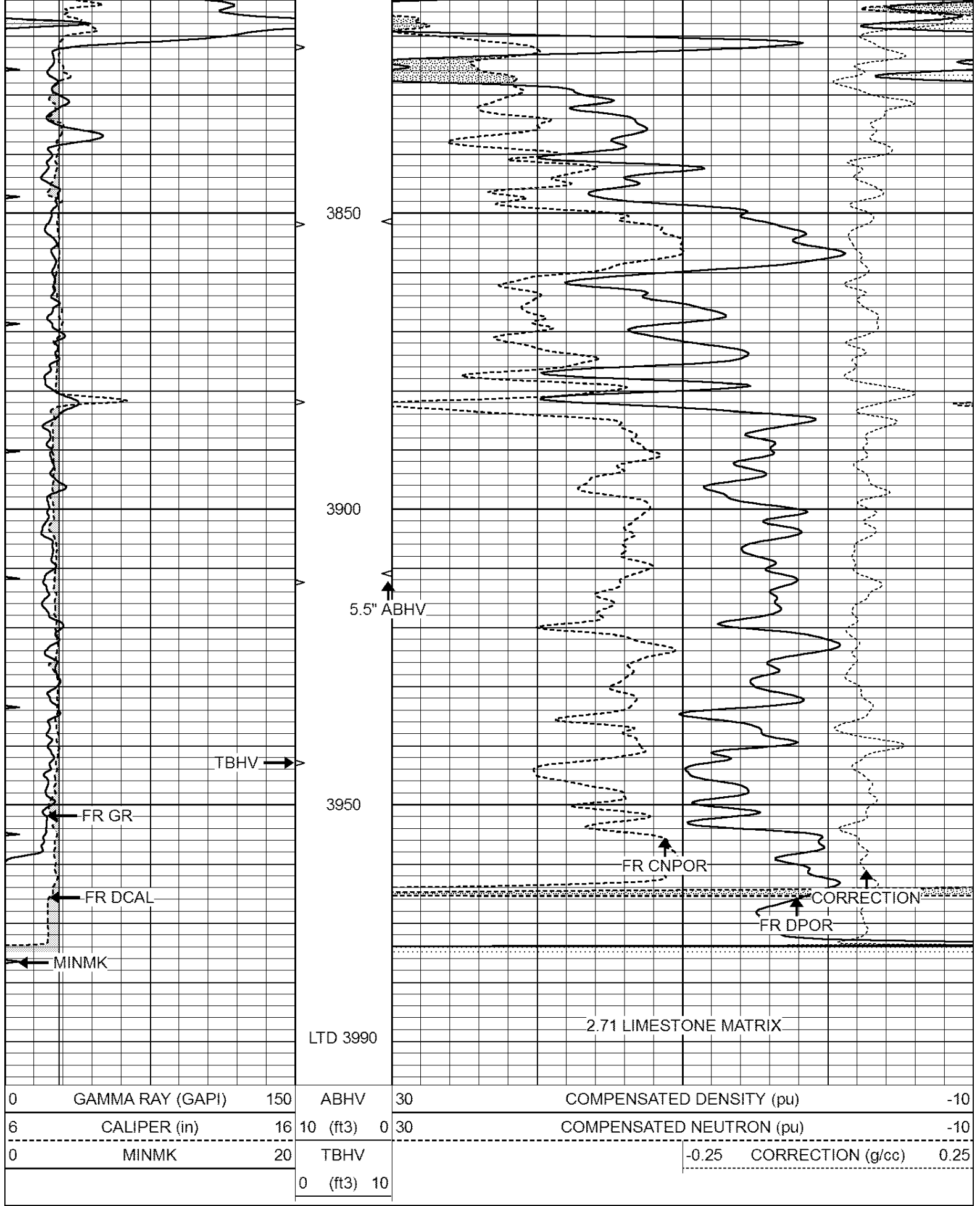
Database File: 409696ddn.db
 Dataset Pathname: pass3.9
 Presentation Format: den_neu
 Dataset Creation: Fri Oct 19 22:47:48 2012 by Calc Open-Cased 110302
 Charted by: Depth in Feet scaled 1:240

0	GAMMA RAY (GAPI)	150	ABHV	30	COMPENSATED DENSITY (pu)	-10
6	CALIPER (in)	16	10 (ft3)	0 30	COMPENSATED NEUTRON (pu)	-10
0	MINMK	20	TBHV		-0.25 CORRECTION (g/cc)	0.25
			0 (ft3)	10		





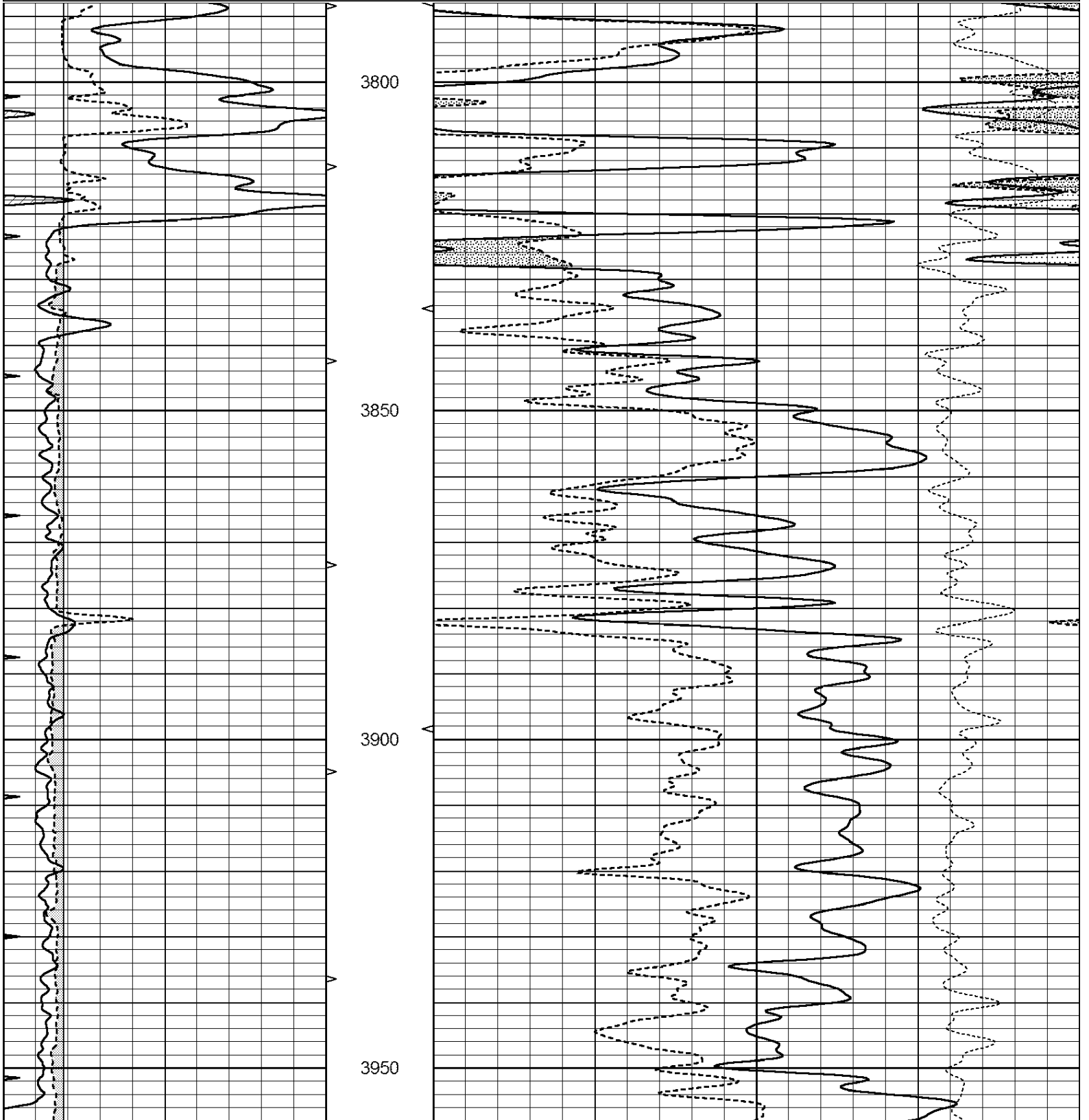


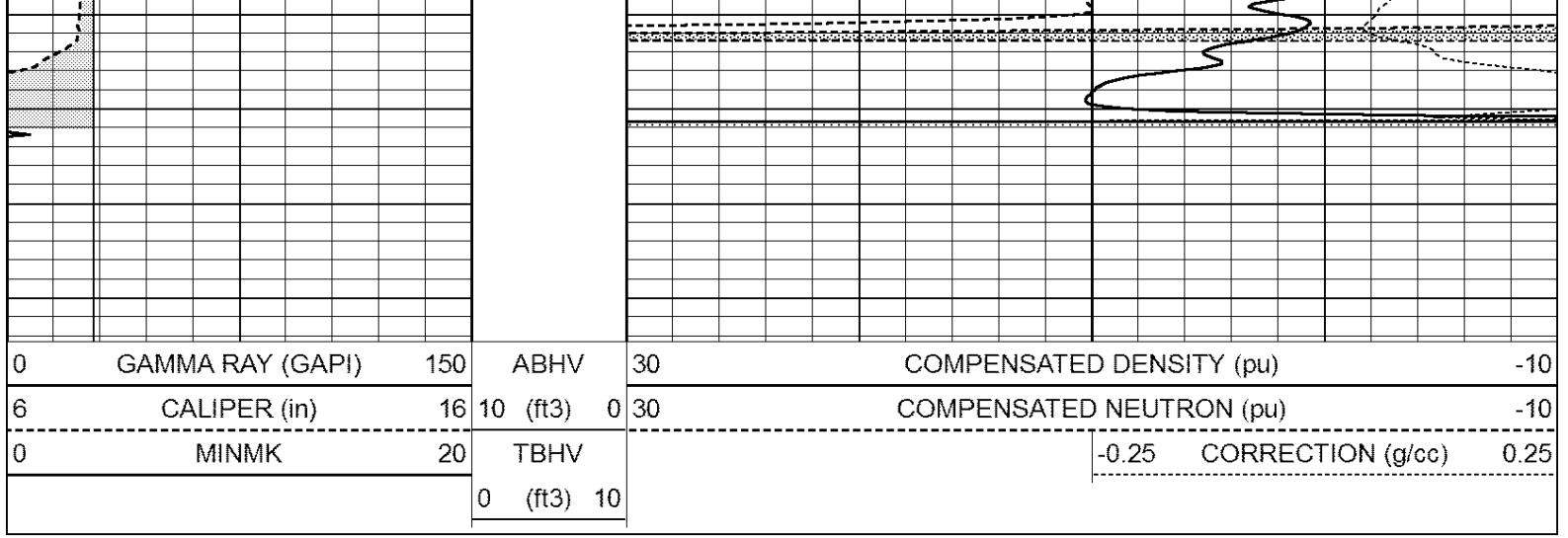


0	GAMMA RAY (GAPI)	150	ABHV	30	COMPENSATED DENSITY (pu)	-10	
6	CALIPER (in)	16	10 (ft3)	0 30	COMPENSATED NEUTRON (pu)	-10	
0	MINMK	20	TBHV		-0.25	CORRECTION (g/cc)	0.25
			0 (ft3)	10			

Database File: 409696ddn.db
 Dataset Pathname: pass2.5
 Presentation Format: den_neu
 Dataset Creation: Fri Oct 19 22:01:27 2012 by Calc Open-Cased 110302
 Charted by: Depth in Feet scaled 1:240

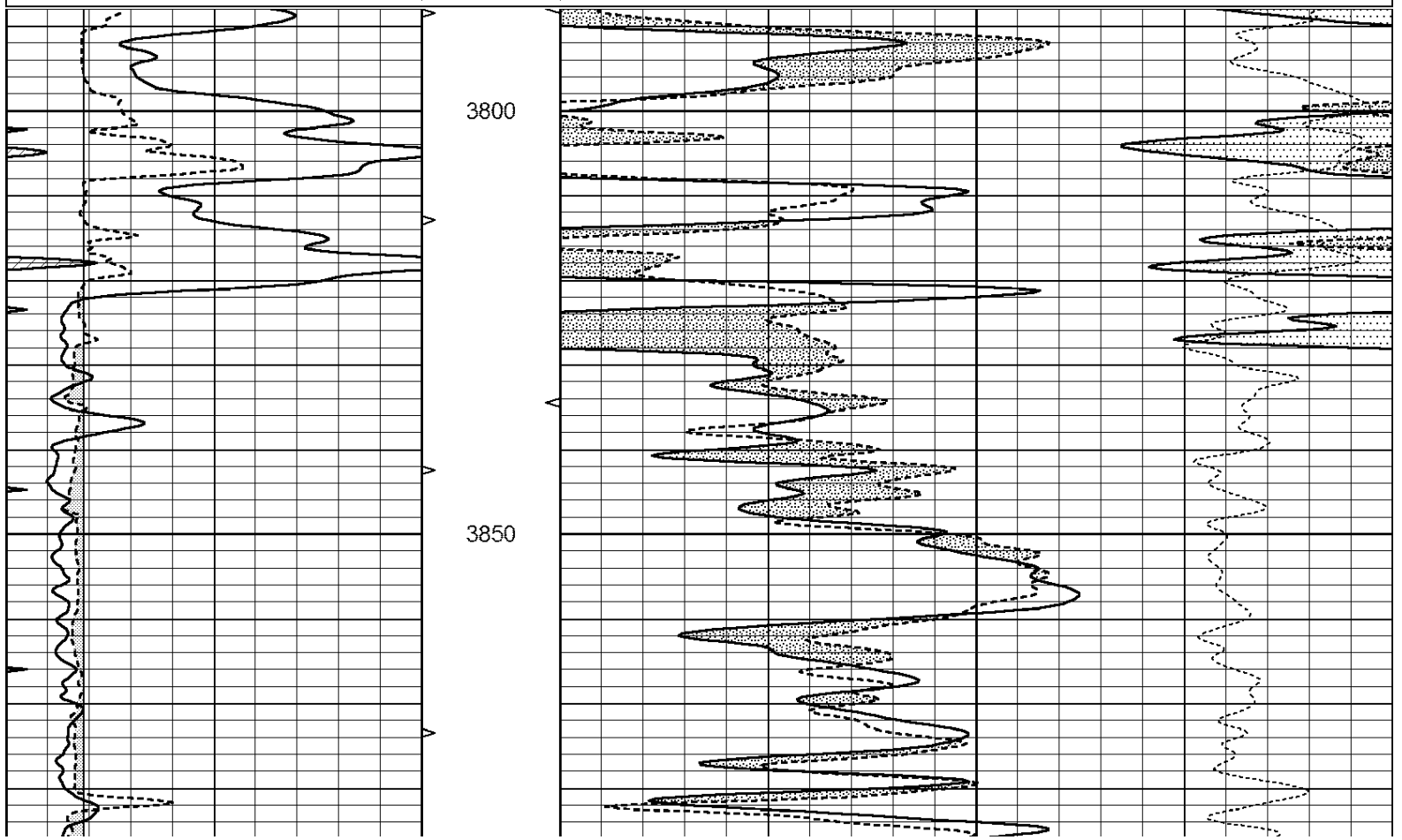
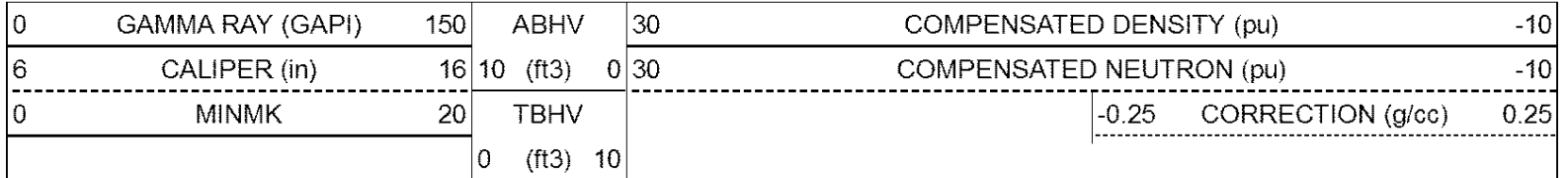
0	GAMMA RAY (GAPI)	150	ABHV	30	COMPENSATED DENSITY (pu)	-10
6	CALIPER (in)	16	10 (ft3)	0 30	COMPENSATED NEUTRON (pu)	-10
0	MINMK	20	TBHV		-0.25 CORRECTION (g/cc)	0.25
			0 (ft3)	10		

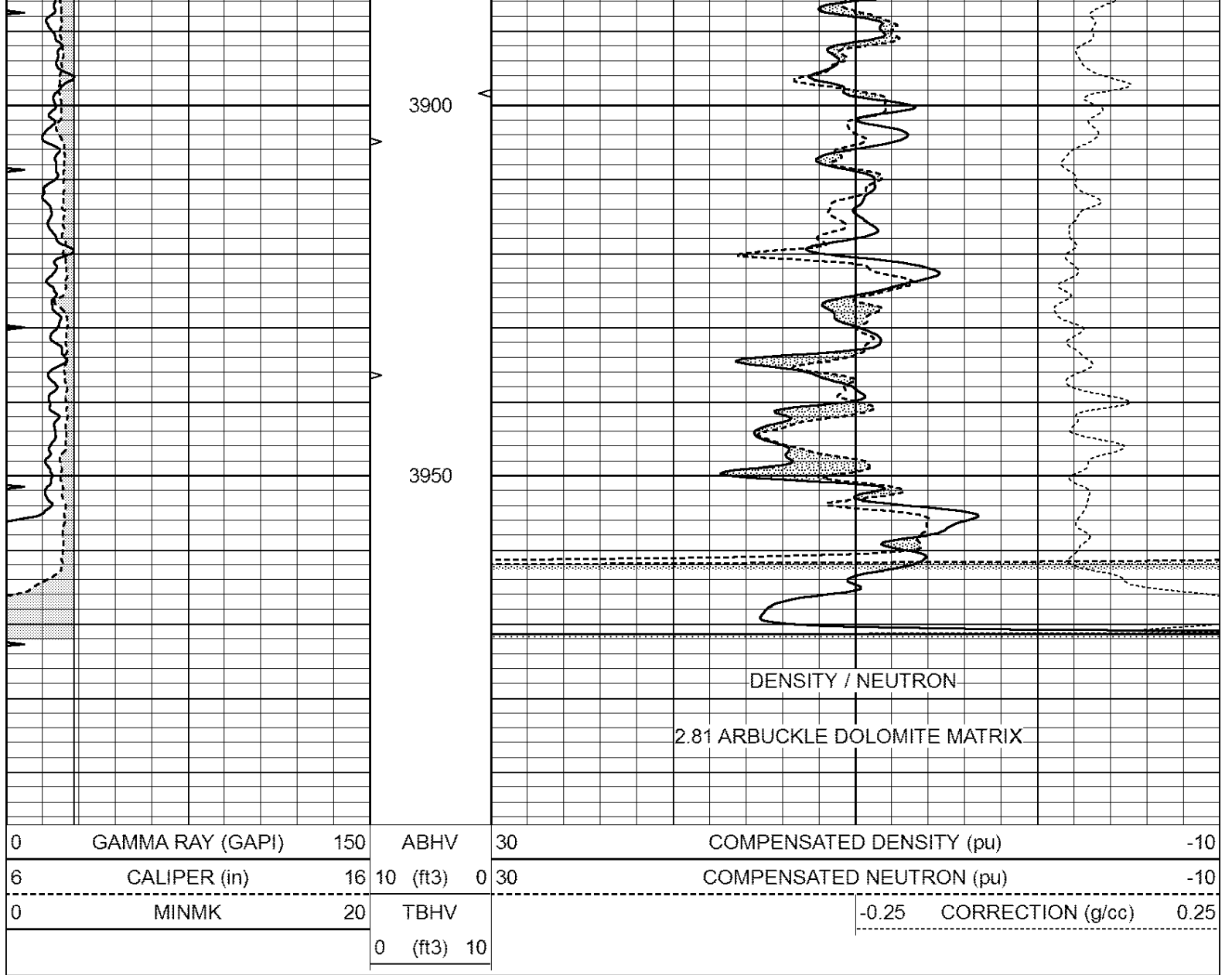




DOLOMITE MATRIX

Database File: 409696ddn.db
 Dataset Pathname: pass2.7
 Presentation Format: den_neu
 Dataset Creation: Fri Oct 19 22:36:14 2012
 Charted by: Depth in Feet scaled 1:240





Calibration Report

Database File: 409696ddn.db
 Dataset Pathname: pass3.9
 Dataset Creation: Fri Oct 19 22:47:48 2012 by Calc Open-Cased 110302

Dual Induction Calibration Report

Serial-Model: DIL4-GEAR
 Performed: Fri Oct 19 21:29:05 2012

Loop:	Readings			References			Results	
	Air	Loop		Air	Loop		m	b
Deep	0.008	0.666	V	0.000	400.000	mmho/m	570.000	-5.000
Medium	-0.003	0.769	V	0.000	462.500	mmho/m	560.000	-3.000
Internal:	Zero	Cal		Zero	Cal		m	b
Deep	0.013	0.651	V	0.000	400.000	mmho/m	627.541	-8.365
Medium	0.020	0.754	V	0.000	462.500	mmho/m	630.311	-12.549

Litho Density Calibration Report
 Serial: 003N Model: PRB
 Performed Tue Sep 08 14:14:44 2009

Litho Density Calibration

	Background	Magnesium	Aluminum	Sandstone	
Window 1	2042.6	12312.8	4225.8	13758.4	cps
Window 2	1855.8	10134.7	3624.2	11113.1	cps
Window 3	1639.4	6760.2	2716.3	7260.3	cps
Window 4	466.4	469.2	466.1	476.5	cps
Long Space	0.0	8278.9	1768.4	9257.4	cps
Short Space	2.2	2377.3	1544.1	2574.2	cps
Rho		1.7100	2.5900	1.3800	g/cc
Pe			2.5700	1.5500	
Rib Angle	: 44.4	Rib Slope	: 0.979	Density/Spine Ratio	: 0.549
Spine Angle	: 74.4	Spine Slope	: 3.577	Spine Intercept	: -18.8

Caliper	Readings	Reference	
Low Ref	3.4	8.0	
High Ref	5.0	15.0	
	Gain: 4.5		Offset: -7.3

Compensated Neutron Calibration Report

Serial Number: 070808
 Tool Model: Probe

PRE-SURVEY VERIFICATION

Detector	Readings	Measured	Target
Short Space	cps		
Long Space	cps	pu	pu

POST-SURVEY VERIFICATION

Detector	Readings	Measured	Target
Short Space	cps		
Long Space	cps	pu	pu

Gamma Ray Calibration Report

Serial Number: 070559
 Tool Model: OPEN_GR
 Performed: Wed Sep 19 15:58:00 2012

Calibrator Value: 1.0 GAPI

Background Reading: 0.0 cps
 Calibrator Reading: 1.0 cps

Sensitivity: 0.3000 GAPI/cps