



Pioneer Energy Services

Microresistivity Log

15-083-20,287-00-01

API No.

Company **American Warrior, Inc.**
 Well **Burke SWDW No.1-4**
 Field **Saw Log Creek Southeast**
 County **Hodgeman State** **Kansas**

Location **660' FSL & 660' FWL**

Sec: **4** Twp: **24S** Rge: **21W**

Other Services
CNL/CDL
DIL

Elevation

Permanent Datum **Ground Level** Elevation **2368**
 Log Measured From **Kelly Bushing** 11 Ft. Above Perm. Datum
 Drilling Measured From **Kelly Bushing**

K.B. 2379
D.F.
G.L. 2368

Date	10/20/2012
Run Number	Two
Depth Driller	5500
Depth Logger	5505
Bottom Logged Interval	5504
Top Log Interval	4300
Casing Driller	8.625 @ 263
Casing Logger	265
Bit Size	7.875
Type Fluid in Hole	Chemical
Salinity, ppm CL	9.000
Density / Viscosity	9.0 48
pH / Fluid Loss	9.0 11.6
Source of Sample	Flowline
Rm @ Meas. Temp	.55 @ 68
Rmf @ Meas. Temp	.41 @ 68
Rmc @ Meas. Temp	.74 @ 68
Source of Rmf / Rmc	Charts
Rm @ BHT	.29 @ 131
Operating Rig Time	3 Hours
Max Rec. Temp. F	131
Equipment Number	17
Location	Hays
Recorded By	C. Desaire
Witnessed By	Kevin Timson

<<< Fold Here >>>

All interpretations are opinions based on inferences from electrical or other measurements and we cannot and do not guarantee the accuracy or correctness of any interpretation, and we shall not, except in the case of gross or willful negligence on our part, be liable or responsible for any loss, costs, damages, or expenses incurred or sustained by anyone resulting from any interpretation made by any of our officers, agents or employees. These interpretations are also subject to our general terms and conditions set out in our current Price Schedule.

Comments

Thank you for using Pioneer Energy Services
www.pioneerenergy.com
 785 625 3858

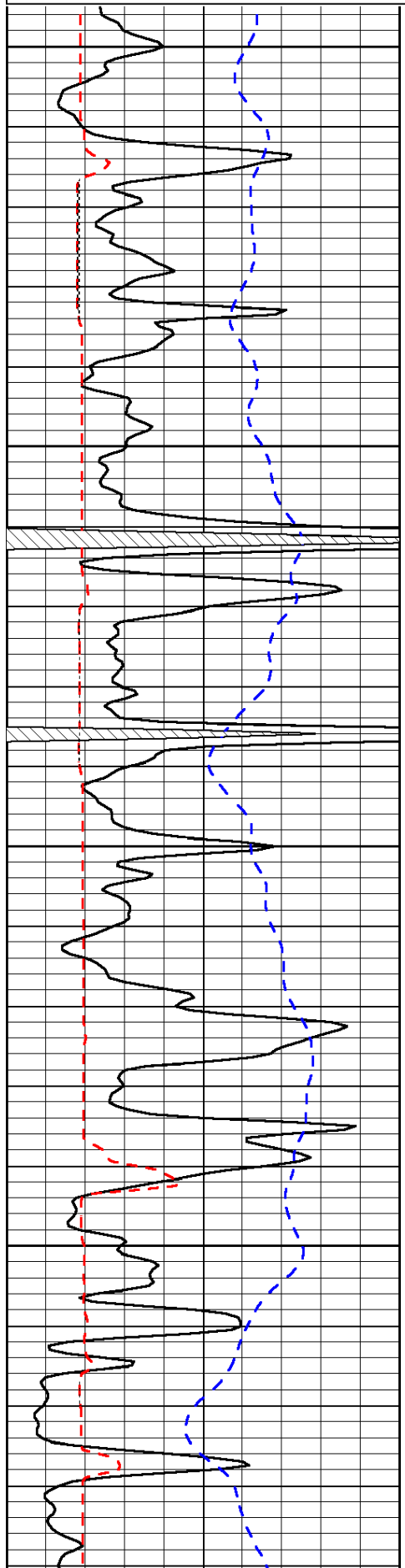
Hanston KS, 8 S to H Rd,
 4 E, 2 S, 1/4 E, 1/8 N, W Into

Database File: c:\warrior\data\amwar_burke swdw no.1-4\awhd.db
 Dataset Pathname: dil/awstk
 Presentation Format: micro
 Dataset Creation: Sat Oct 20 21:44:00 2012
 Charted by: Depth in Feet scaled 1:240

0	Gamma Ray	150
6	Micro Log Caliper (GAPI)	16
-200	SP (mV)	0

0	Micro Inverse 1 X 1	40
0	Micro Normal 2"	40
15000	Line Weight	0

LSPD

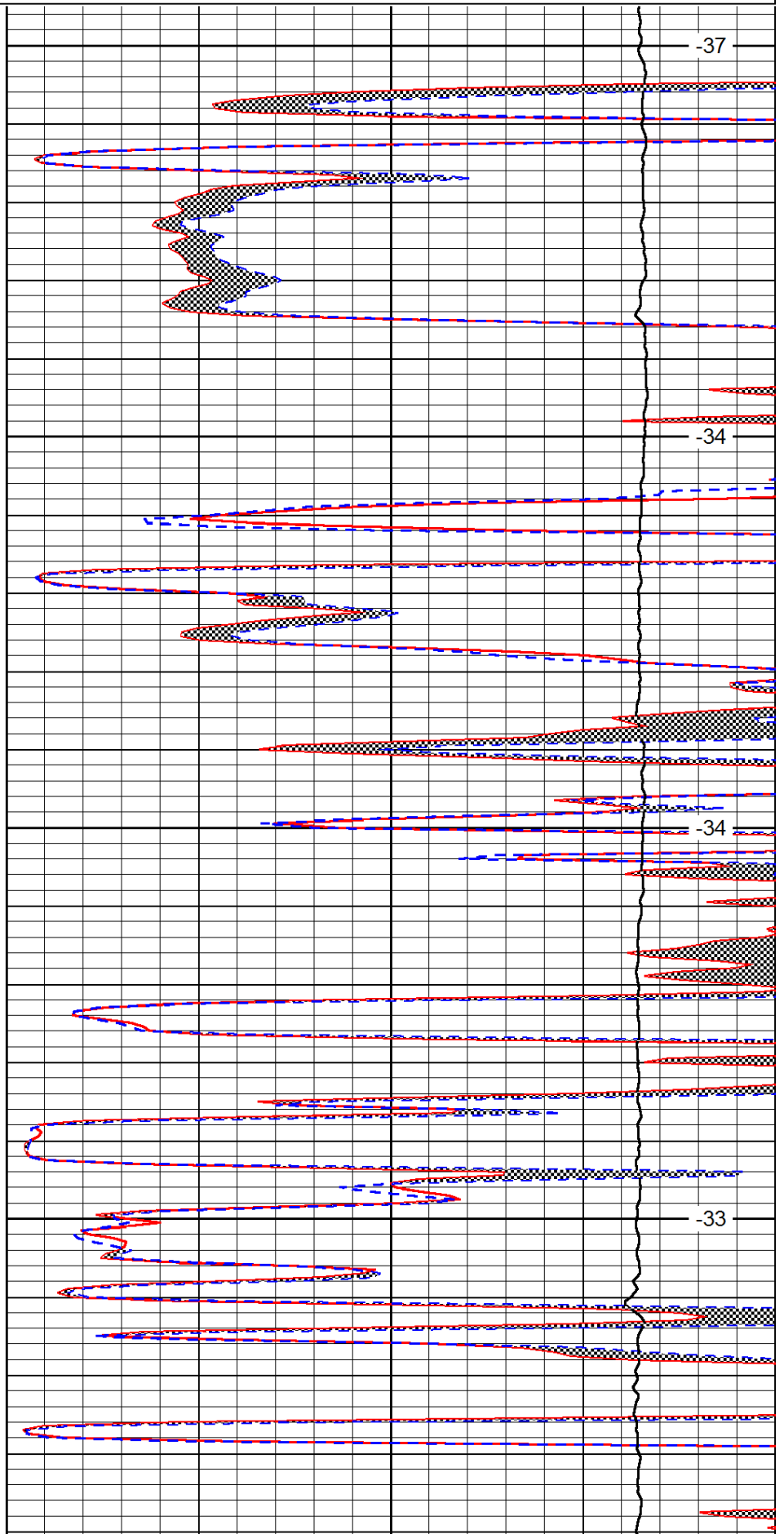


4300

4350

4400

4450

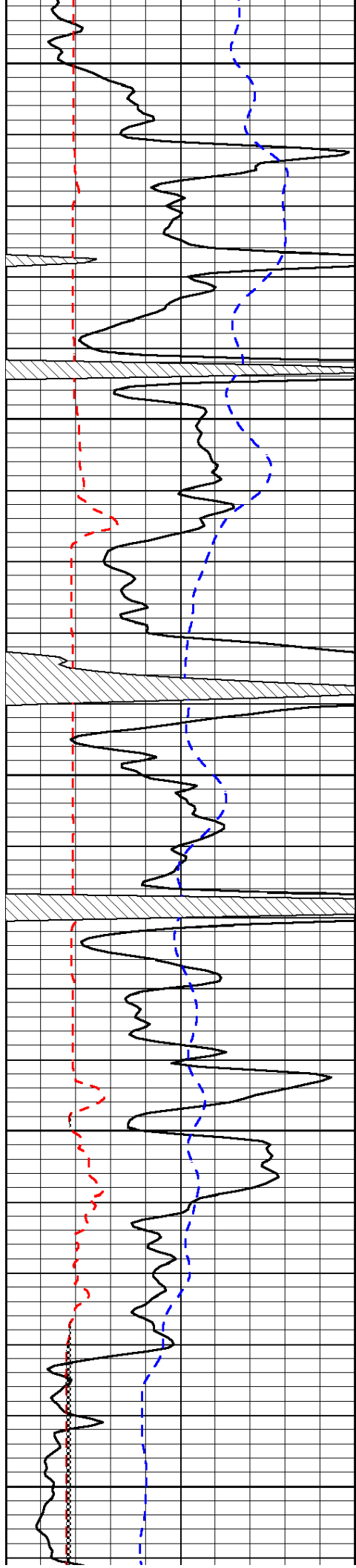


-37

-34

-34

-33



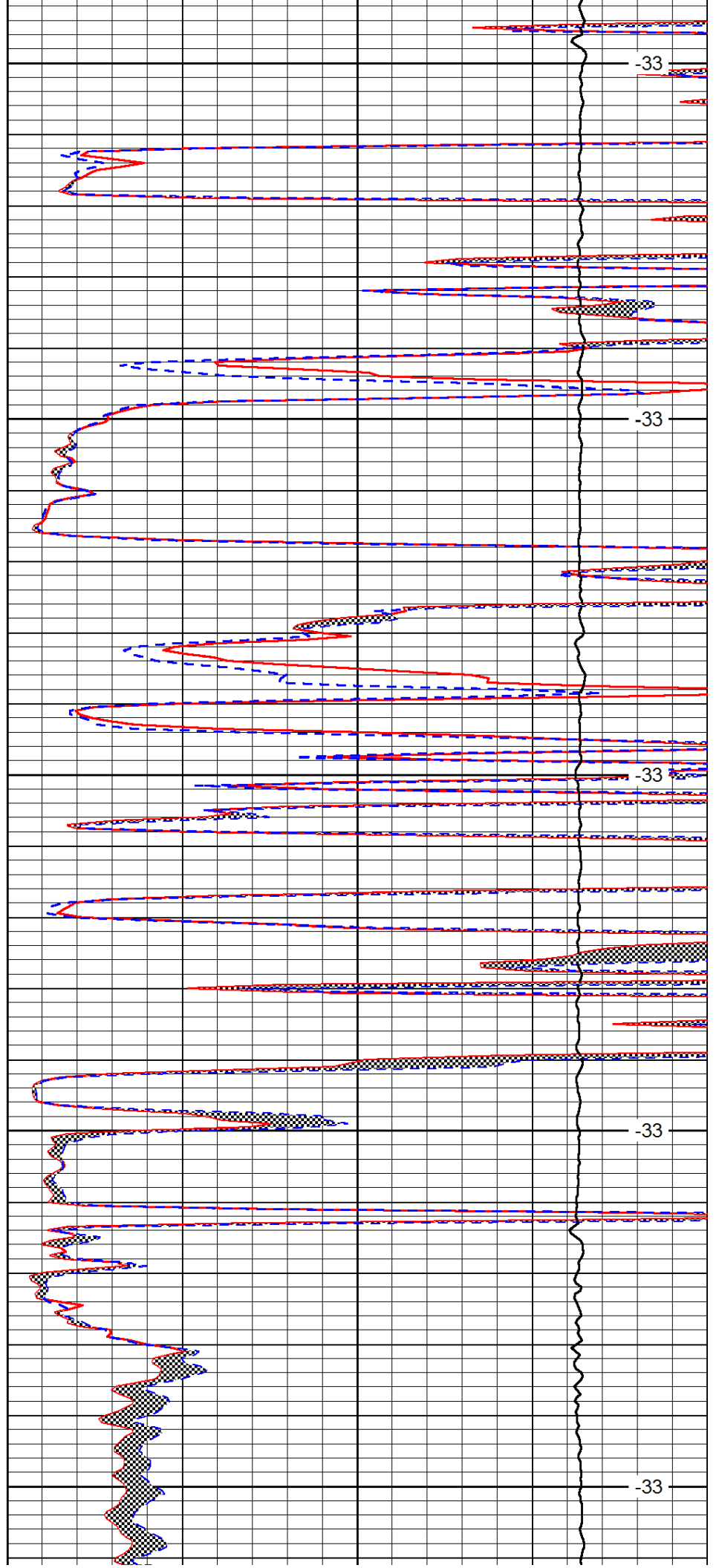
4500

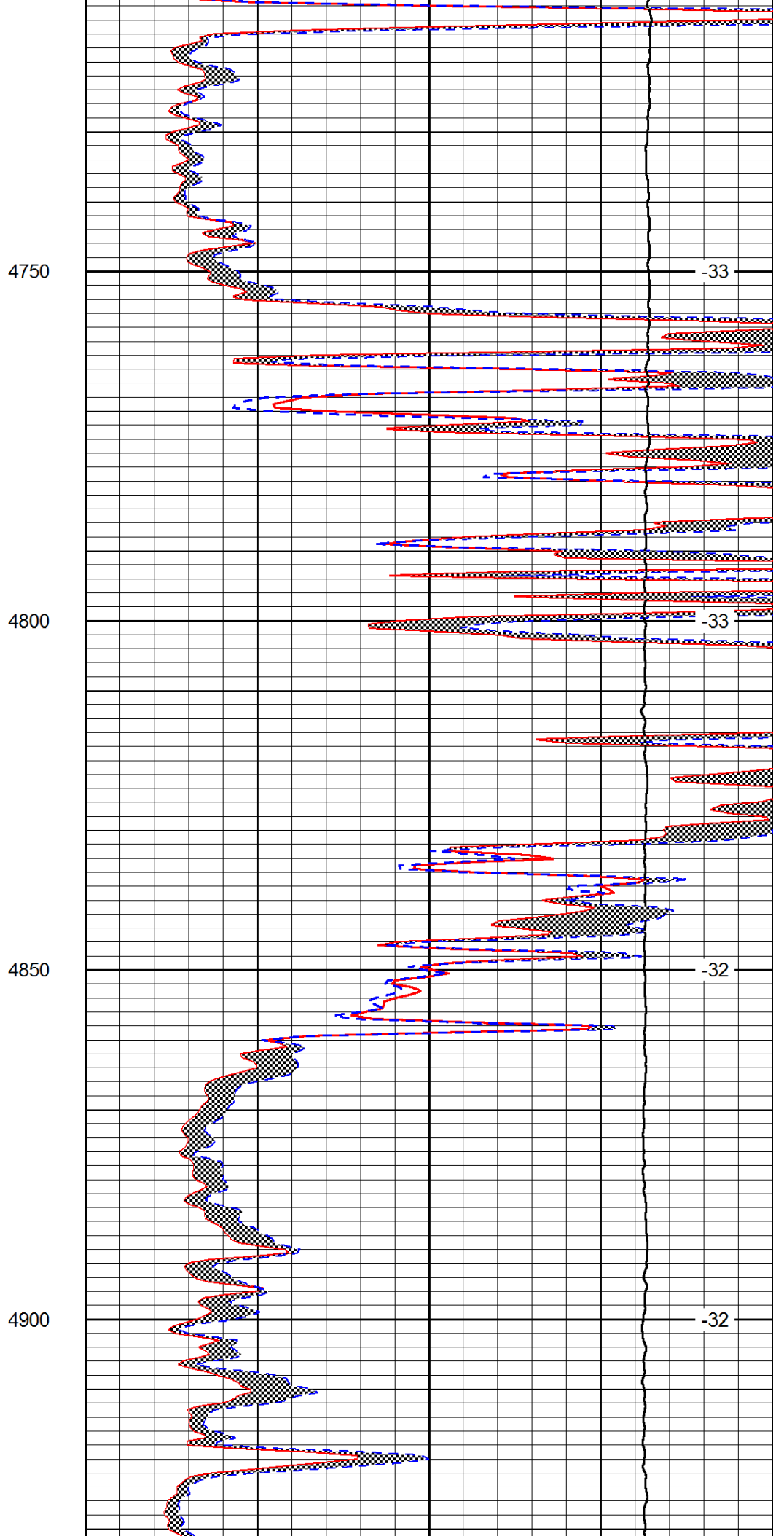
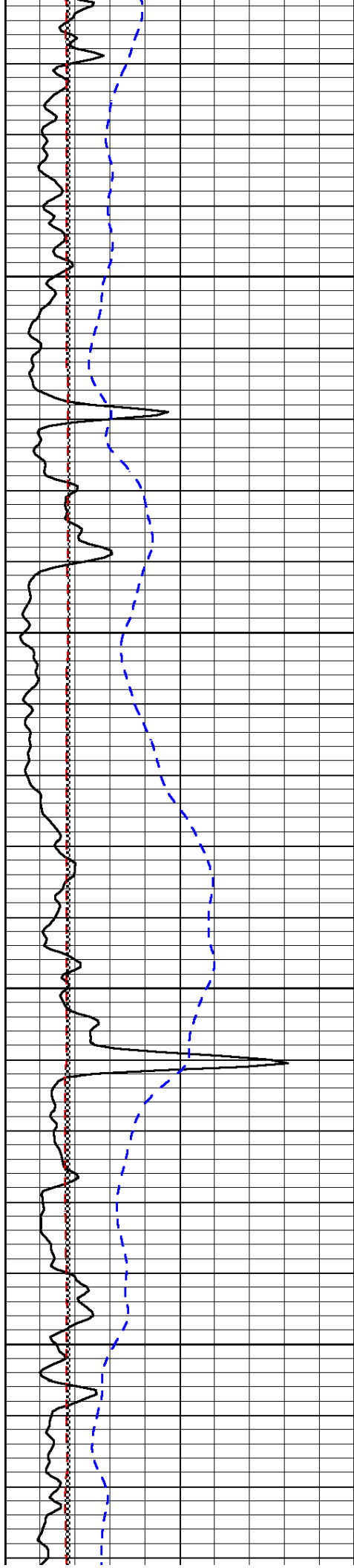
4550

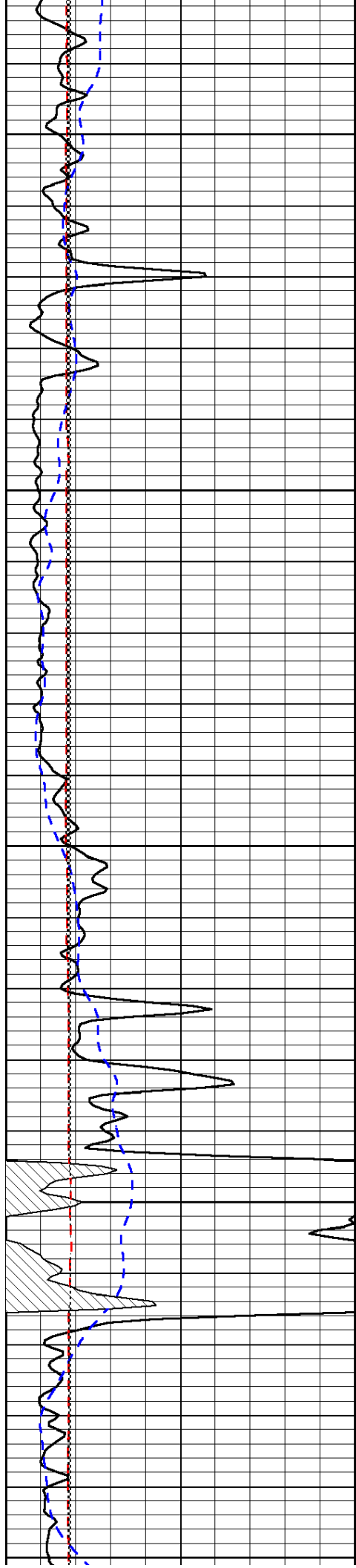
4600

4650

4700







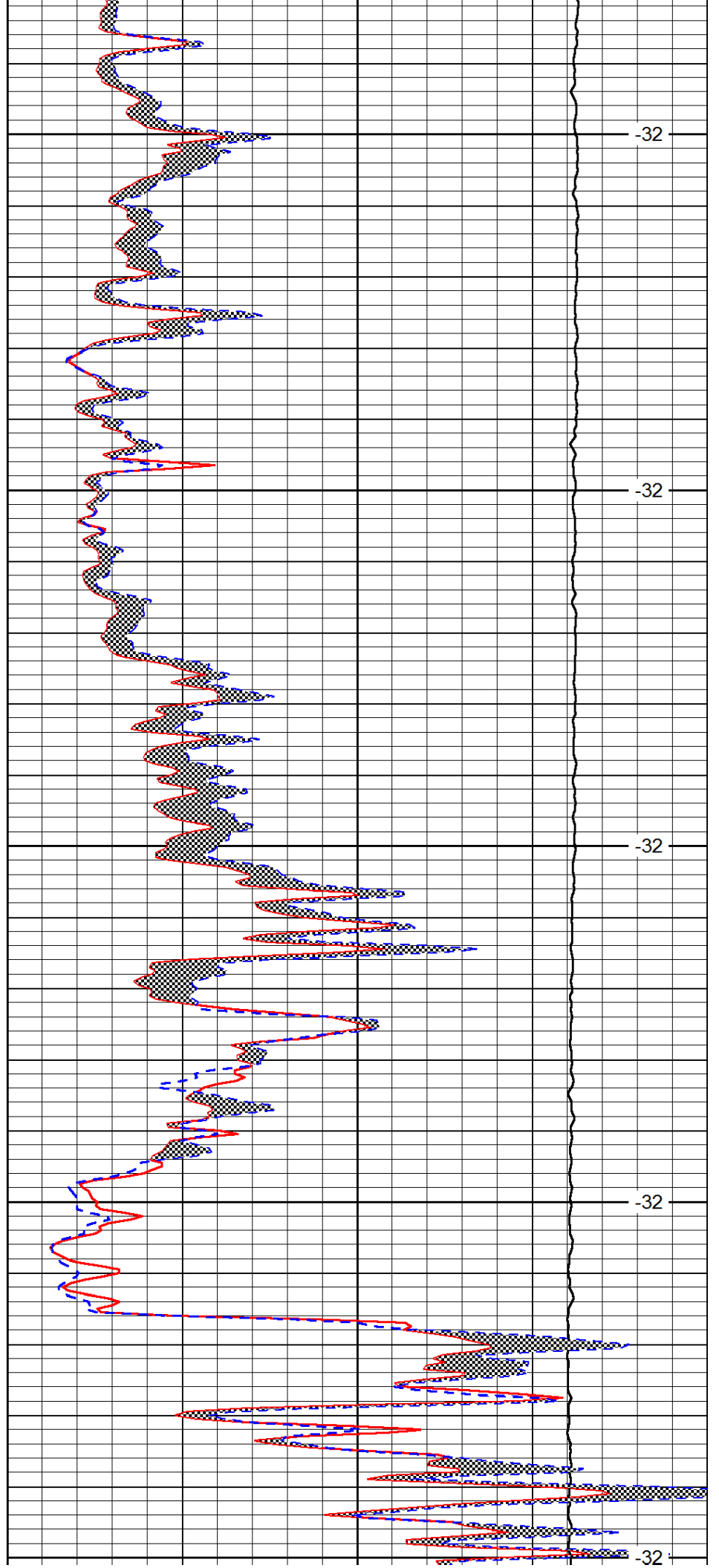
4950

5000

5050

5100

5150



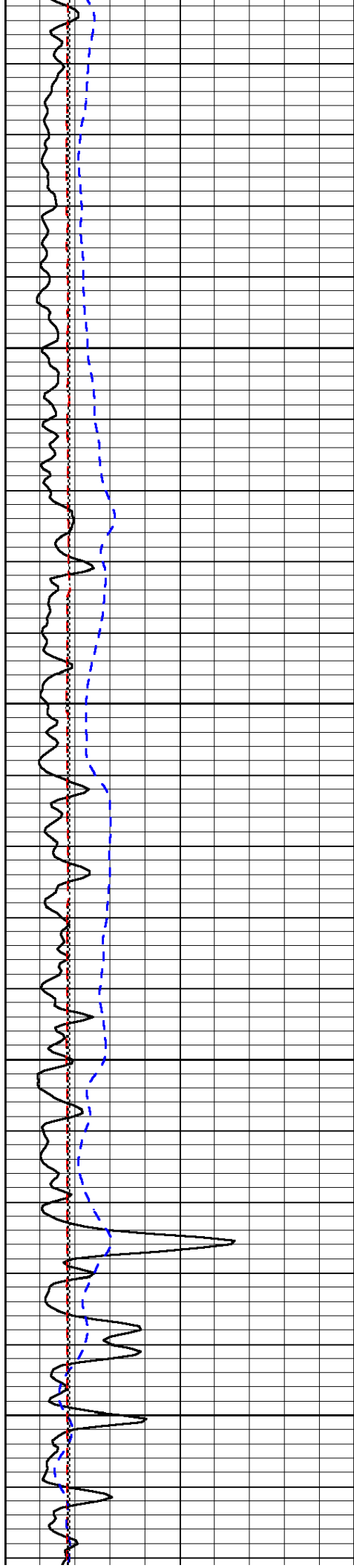
-32

-32

-32

-32

-32

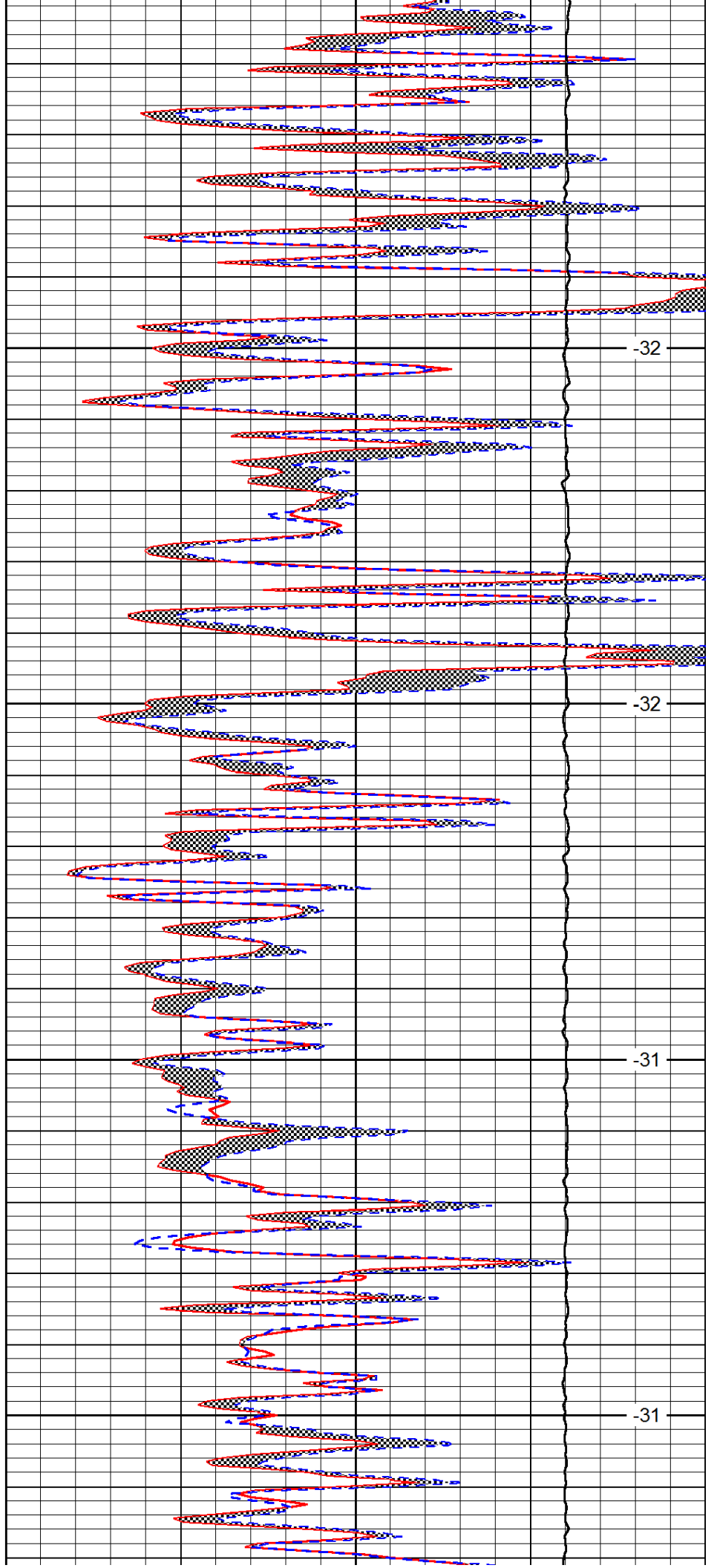


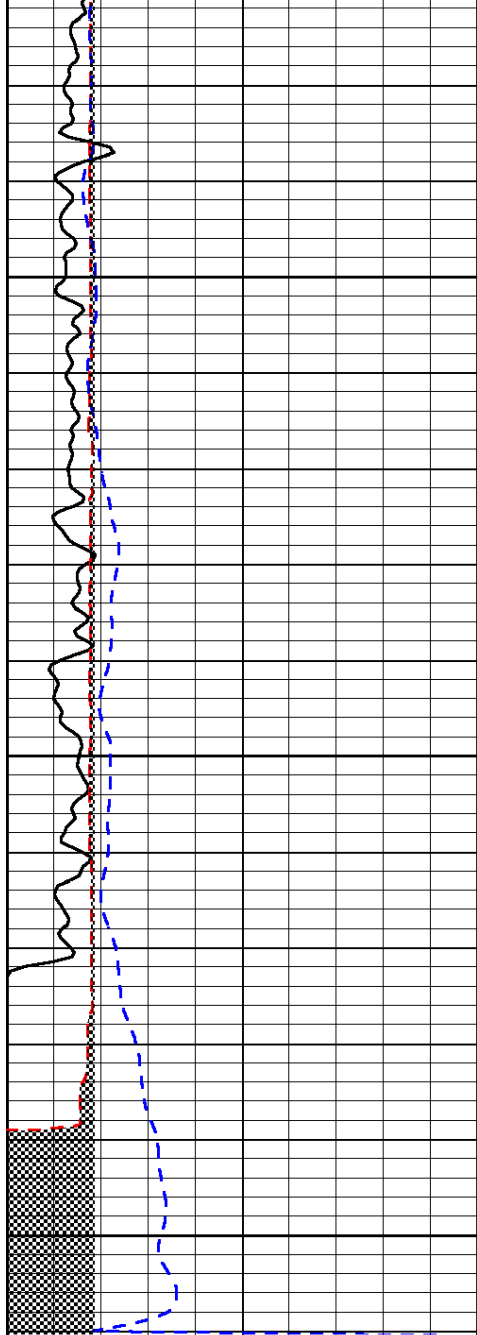
5200

5250

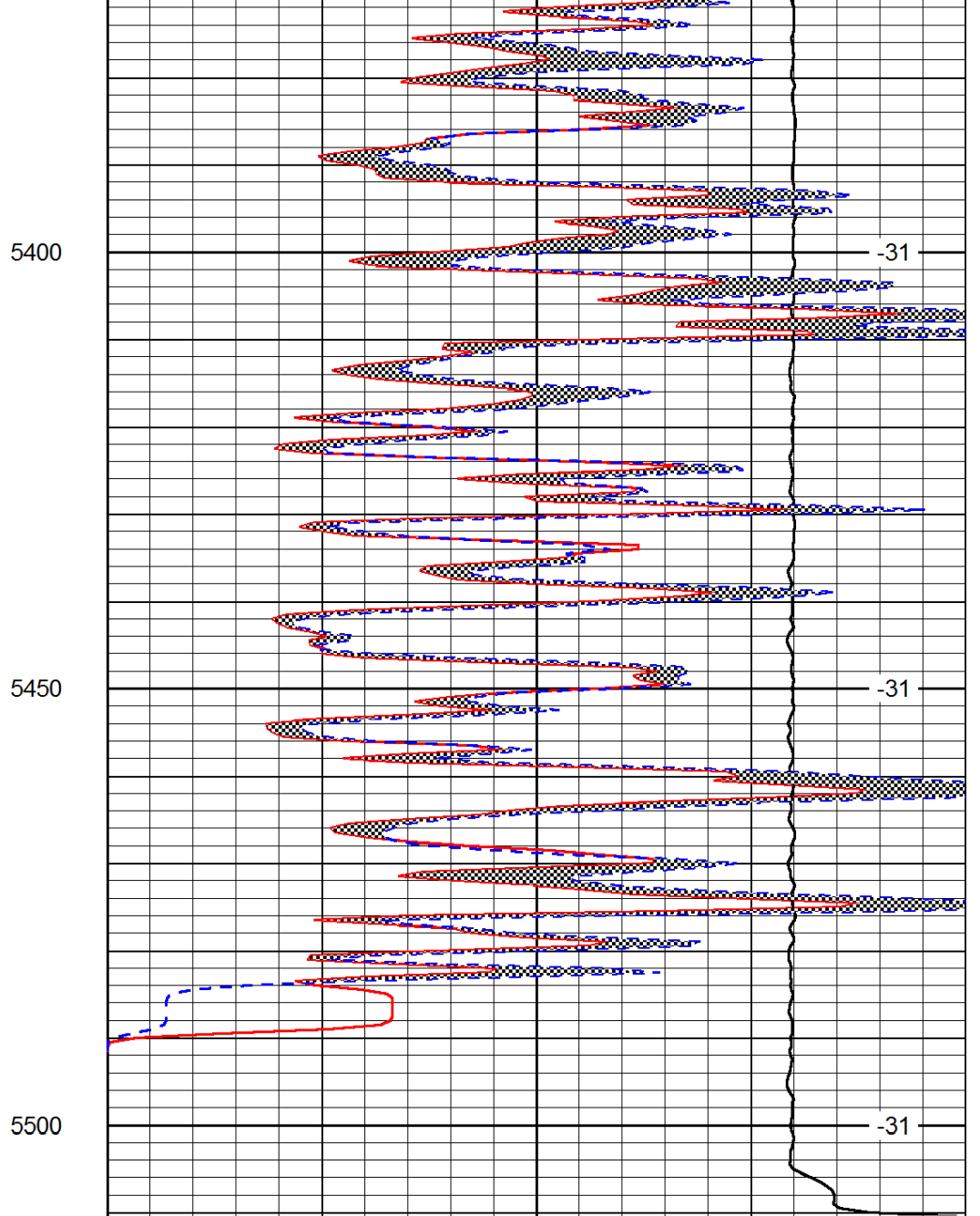
5300

5350





0	Gamma Ray	150
6	Micro Log Caliper (GAPI)	16
-200	SP (mV)	0



0	Micro Inverse 1 X 1	40
0	Micro Normal 2''	40
15000	Line Weight	0

LSPD