



**COMPLETION
& PRODUCTION
SERVICES CO.**

**MICRO
LOG**

Company MUSTANG ENERGY CORPORATION
Well De YOUNG #3
Field COPPER
County GRAHAM
State KANSAS

Company MUSTANG ENERGY CORPORATION
Well De YOUNG #3
Field COPPER
County GRAHAM State KANSAS

Location: API # : 15-065-23874-0000
330' FNL & 2120' FEL
E/2 - NW - NW - NE
SEC 11 TWP 10S RGE 21W
Permanent Datum GROUND LEVEL Elevation 2262
Log Measured From KELLY BUSHING 5' A.G.L.
Drilling Measured From KELLY BUSHING
Other Services CDL/CNL DIL
Elevation K.B. 2267 D.F. 2265 G.L. 2262

Date	10/19/12		
Run Number	TWO		
Depth Driller	3990		
Depth Logger	3990		
Bottom Logged Interval	3988		
Top Log Interval	3200		
Casing Driller	8 5/8"@208'		
Casing Logger	208		
Bit Size	7 7/8"		
Type Fluid in Hole	CHEMICAL MUD	CHLORIDES 2,000 PPM	
Density / Viscosity	9.4/52		
pH / Fluid Loss	9.0/8.8		
Source of Sample	FLOWLINE		
Rm @ Meas. Temp	.850@76F		
Rmt @ Meas. Temp	.636@76F		
Rmc @ Meas. Temp	1.02@76F		
Source of Rmf / Rmc	MEASUREMENT		
Rm @ BHT	.579@116F		
Time Circulation Stopped	4.5 HOURS		
Time Logger on Bottom	9:30 P.M.		
Maximum Recorded Temperature	116F		
Equipment Number	4010		
Location	HAYS, KANSAS		
Recorded By	JEFF LUEBBERS		
Witnessed By	HERB DEINES		

<<< Fold Here >>>

All interpretations are opinions based on inferences from electrical or other measurements and we cannot and do not guarantee the accuracy or correctness of any interpretation, and we shall not, except in the case of gross or willful negligence on our part, be liable or responsible for any loss, costs, damages, or expenses incurred or sustained by anyone resulting from any interpretation made by any of our officers, agents or employees. These interpretations are also subject to our general terms and conditions set out in our current Price Schedule.

Comments

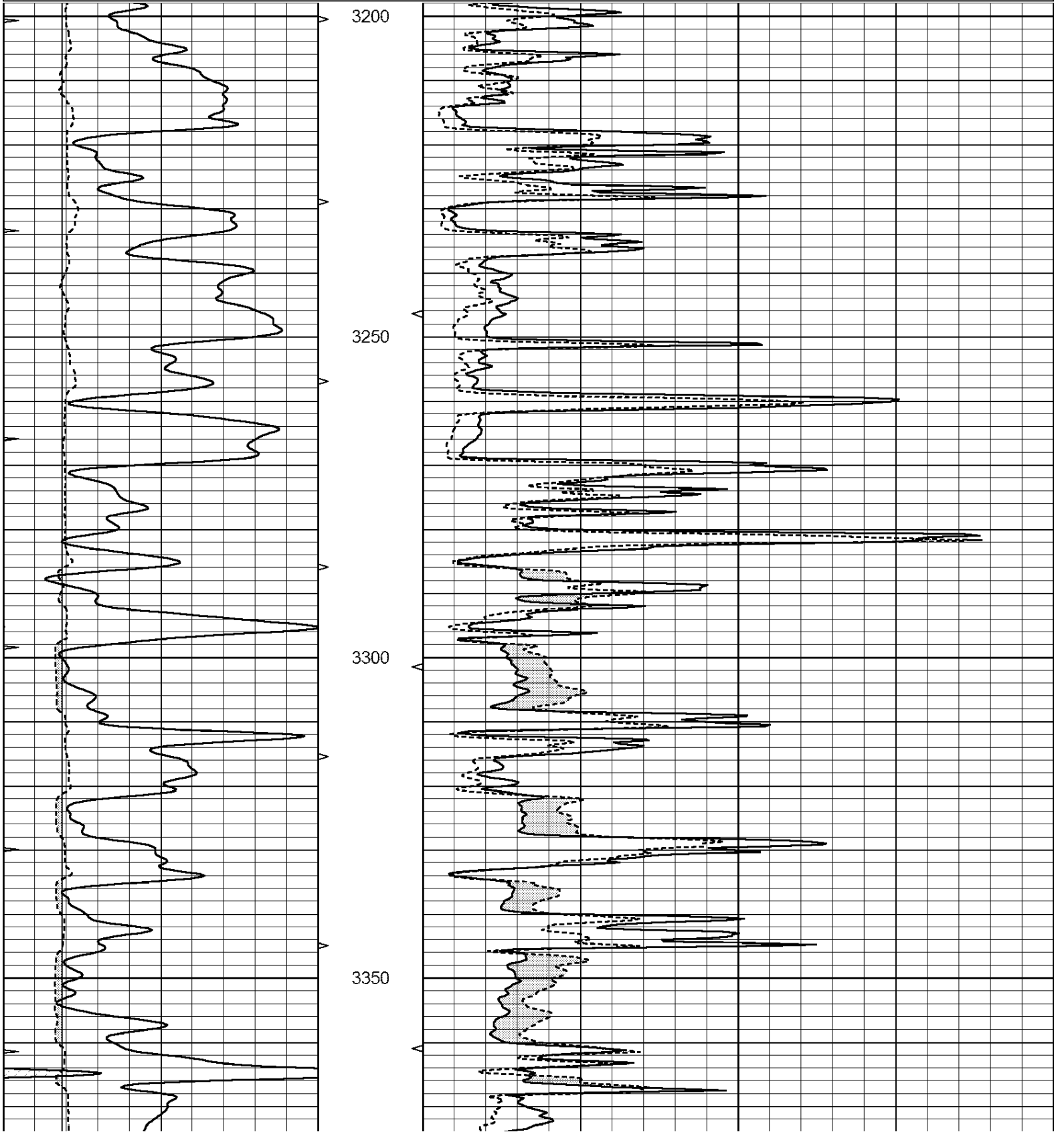
THANK YOU FOR USING SUPERIOR WELL SERVICE HAYS, KANSAS (785) 628-6395
DIRECTIONS
PALCO, KS., 2S. ON BLKTOP TO "RD. Y", 3W. TO "390 AVE.", 1 1/2S., W. INTO BETWEEN TANK BATTERI

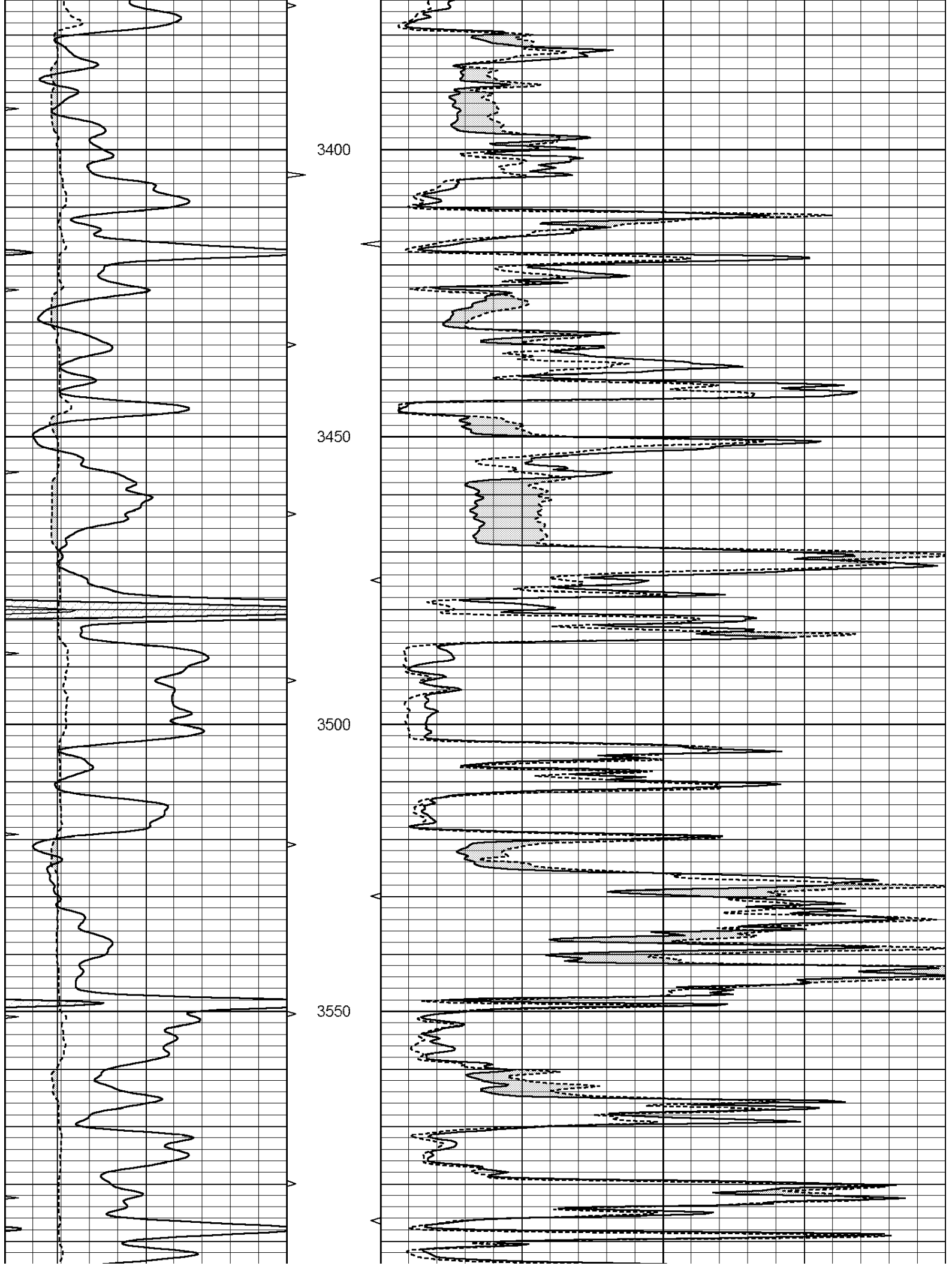


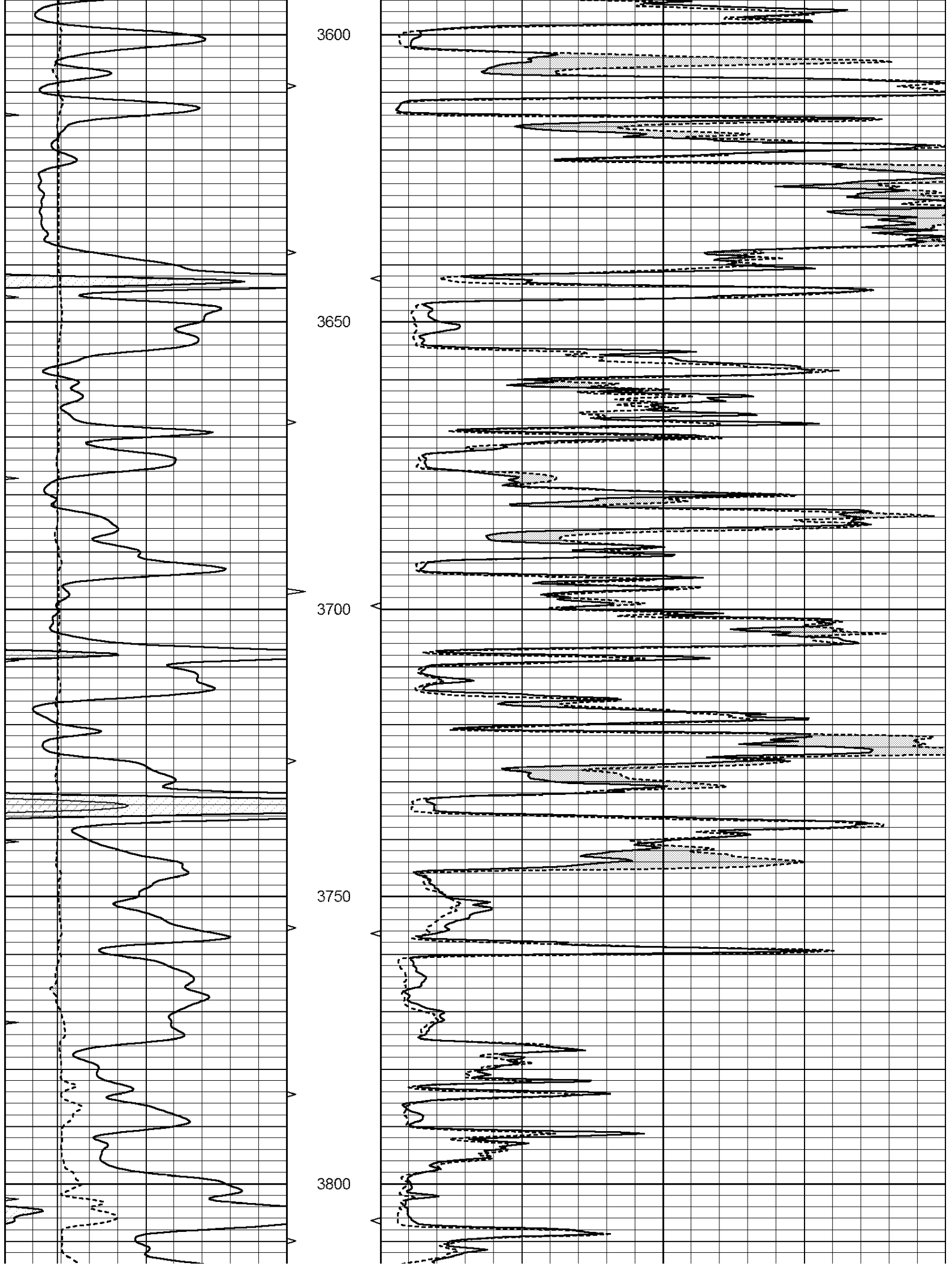
MAIN SECTION

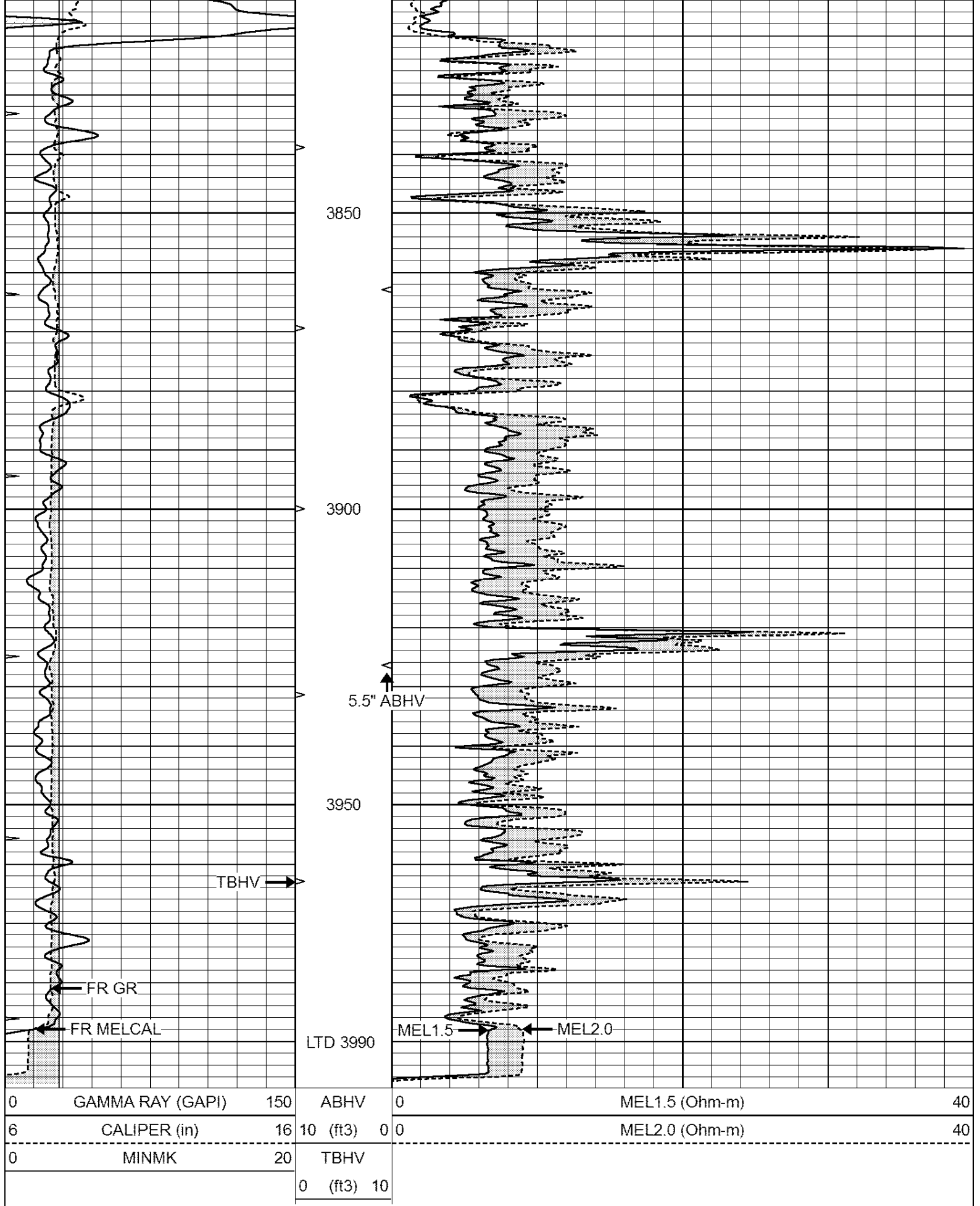
Database File: 409696ddn.db
 Dataset Pathname: pass6.1
 Presentation Format: micro
 Dataset Creation: Sat Oct 20 00:12:56 2012 by Calc Open-Cased 110302
 Charted by: Depth in Feet scaled 1:240

0	GAMMA RAY (GAPI)	150	ABHV	0	MEL1.5 (Ohm-m)	40
6	CALIPER (in)	16	10 (ft3)	0	MEL2.0 (Ohm-m)	40
0	MINMK	20	TBHV			
			0 (ft3)	10		



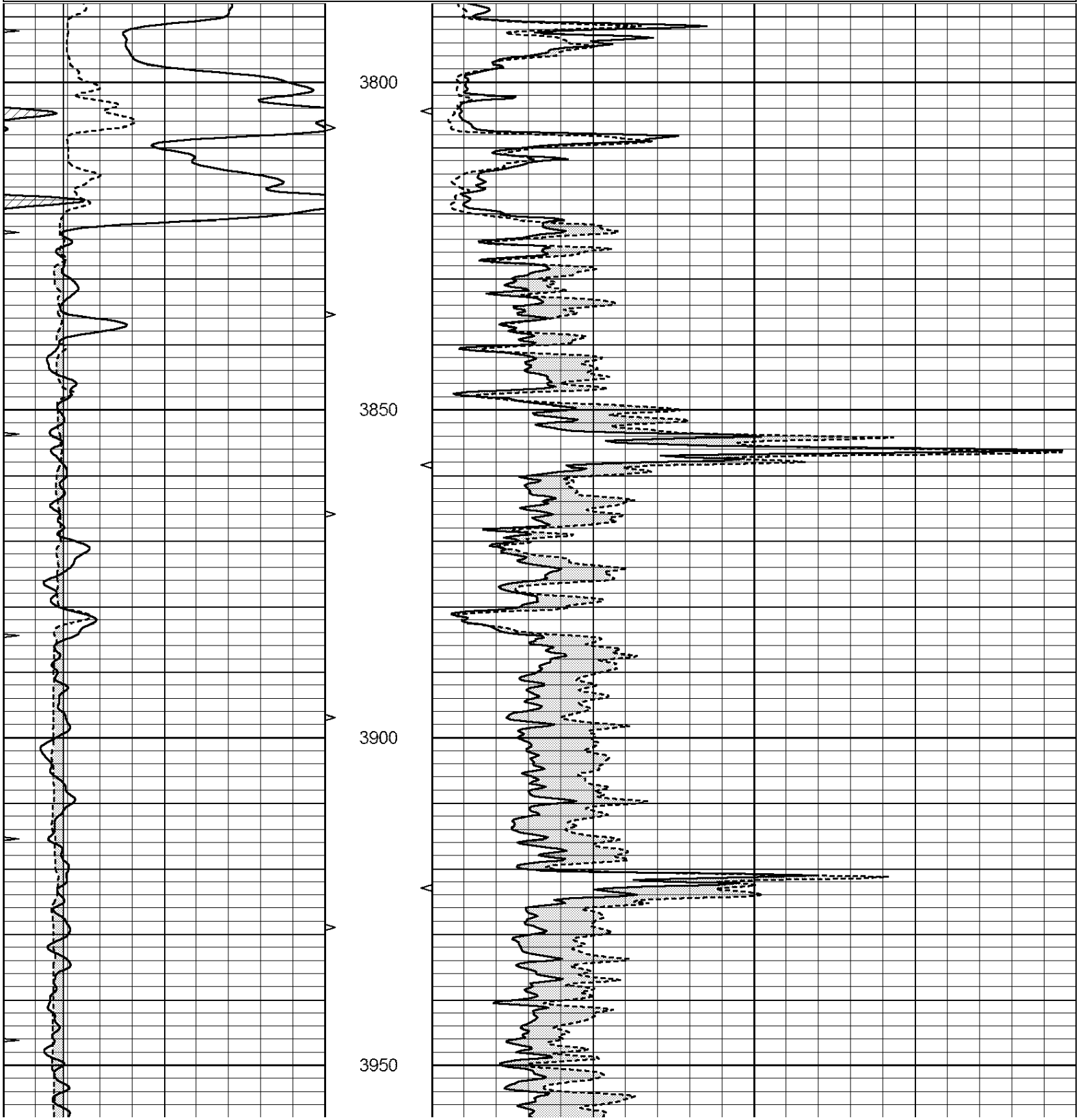


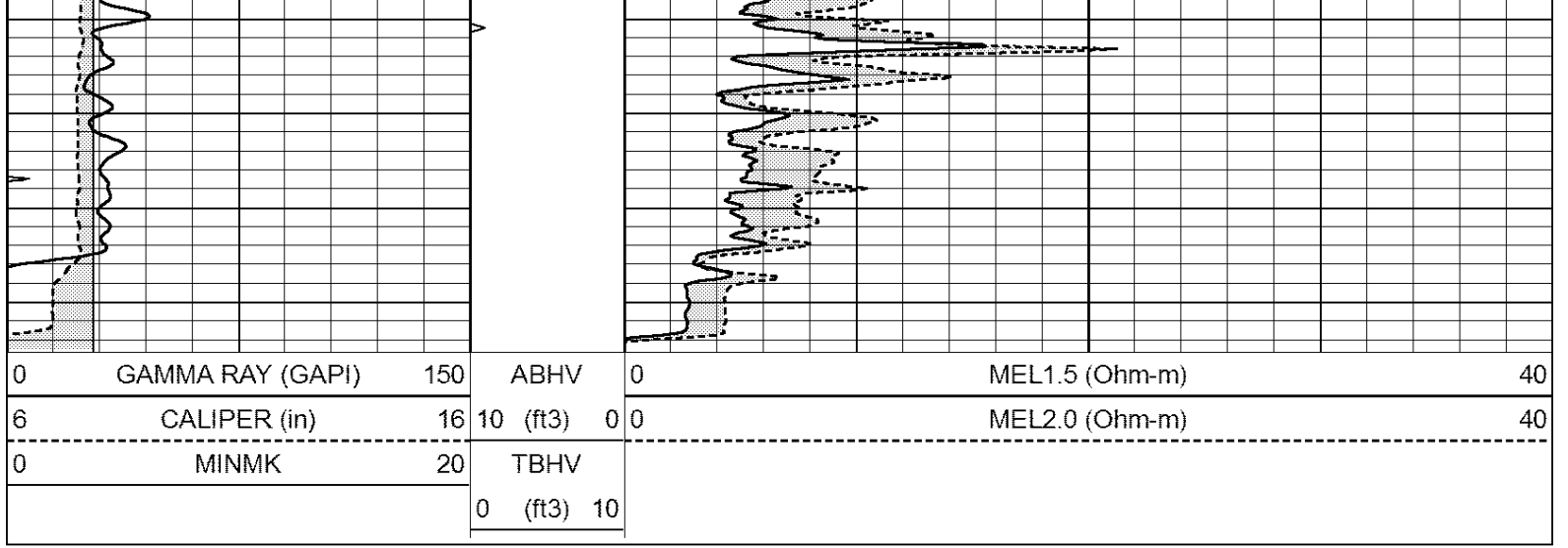




Database File: 409696ddn.db
 Dataset Pathname: pass5.2
 Presentation Format: micro
 Dataset Creation: Fri Oct 19 23:49:30 2012 by Calc Open-Cased 110302
 Charted by: Depth in Feet scaled 1:240

0	GAMMA RAY (GAPI)	150	ABHV	0	MEL1.5 (Ohm-m)	40
6	CALIPER (in)	16	10 (ft3)	0	MEL2.0 (Ohm-m)	40
0	MINMK	20	TBHV			
			0 (ft3)	10		





Calibration Report

Database File: 409696ddn.db
 Dataset Pathname: pass6.1
 Dataset Creation: Sat Oct 20 00:12:56 2012 by Calc Open-Cased 110302

MICRO Calibration Report

Serial Number:	2	
Tool Model:	PROBE	
Performed:	Tue Oct 16 05:33:31 2012	
Caliper Calibration:	Gain=3.929	Offset=3.858
References	Low Cal	High Cal
Readings	8.300	15.000
	1.130	2.835
1.5" Calibration:	Gain=22.000	Offset=-0.400
References	Low Cal	High Cal
Readings	0.000	20.000
	0.065	1.210
2" Calibration:	Gain=34.000	Offset=-0.400
References	Low Cal	High Cal
Readings	0.000	20.000
	0.012	1.043

Gamma Ray Calibration Report

Serial Number:	GR4	
Tool Model:	OPEN	
Performed:	Wed Oct 17 16:42:05 2012	
Calibrator Value:	200.0	GAPI
Background Reading:	0.0	cps
Calibrator Reading:	189.0	cps
Sensitivity:	1.0000	GAPI/cps