



**COMPLETION  
& PRODUCTION  
SERVICES CO.**

**DUAL INDUCTION  
LOG**

Company MUSTANG ENERGY CORPORATION  
Well De YOUNG #3  
Field COPPER  
County GRAHAM  
State KANSAS

Company MUSTANG ENERGY CORPORATION  
Well De YOUNG #3  
Field COPPER  
County GRAHAM State KANSAS

Location: API # : 15-065-23874-0000  
330' FNL & 2120' FEL  
E/2 - NW - NW - NE  
SEC 11 TWP 10S RGE 21W  
Permanent Datum GROUND LEVEL Elevation 2262  
Log Measured From KELLY BUSHING 5' A.G.L.  
Drilling Measured From KELLY BUSHING  
Other Services  
CDL/CNL  
MEL  
Elevation  
K.B. 2267  
D.F. 2265  
G.L. 2262

Date	10/19/12
Run Number	ONE
Depth Driller	3990
Depth Logger	3990
Bottom Logged Interval	3988
Top Log Interval	00
Casing Driller	8 5/8"@208'
Casing Logger	208
Bit Size	7 7/8"
Type Fluid in Hole	CHEMICAL MUD
Density / Viscosity	9.4/52
pH / Fluid Loss	9.0/8.8
Source of Sample	FLOWLINE
Rm @ Meas. Temp	.850@76F
Rmt @ Meas. Temp	.636@76F
Rmc @ Meas. Temp	1.02@76F
Source of Rmt / Rmc	MEASUREMENT
Rm @ BHT	.579@116F
Time Circulation Stopped	2.5 HOURS
Time Logger on Bottom	9:30 P.M.
Maximum Recorded Temperature	116F
Equipment Number	4010
Location	HAYS, KANSAS
Recorded By	JEFF LUEBBERS
Witnessed By	HERB DEINES

<<< Fold Here >>>

All interpretations are opinions based on inferences from electrical or other measurements and we cannot and do not guarantee the accuracy or correctness of any interpretation, and we shall not, except in the case of gross or willful negligence on our part, be liable or responsible for any loss, costs, damages, or expenses incurred or sustained by anyone resulting from any interpretation made by any of our officers, agents or employees. These interpretations are also subject to our general terms and conditions set out in our current Price Schedule.

**Comments**

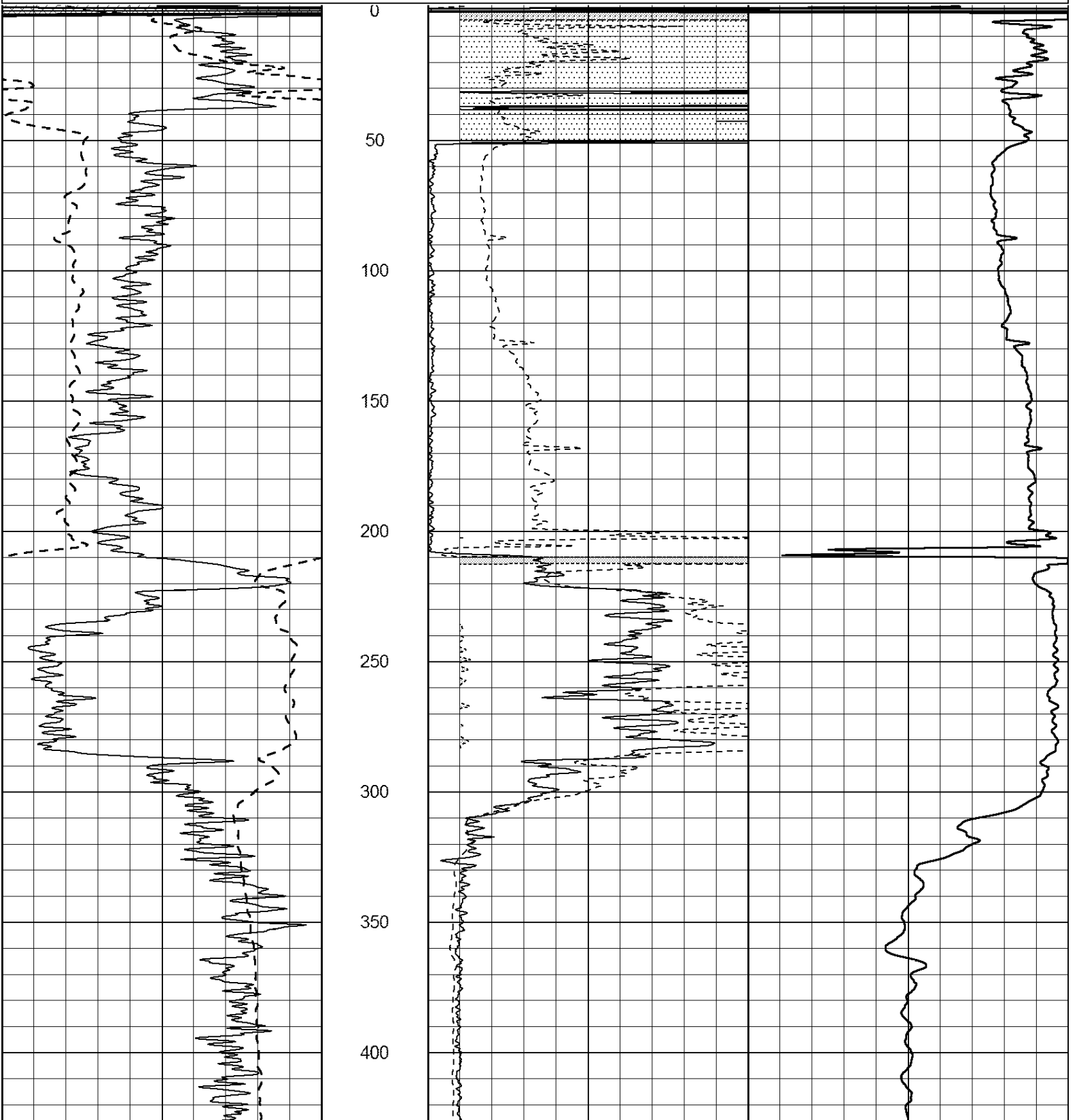
THANK YOU FOR USING SUPERIOR WELL SERVICE HAYS, KANSAS (785) 628-6395  
DIRECTIONS  
PALCO, KS., 2S. ON BLKTOP TO "RD. Y", 3W. TO "390 AVE.", 1 1/2S., W. INTO BETWEEN TANK BATTERI

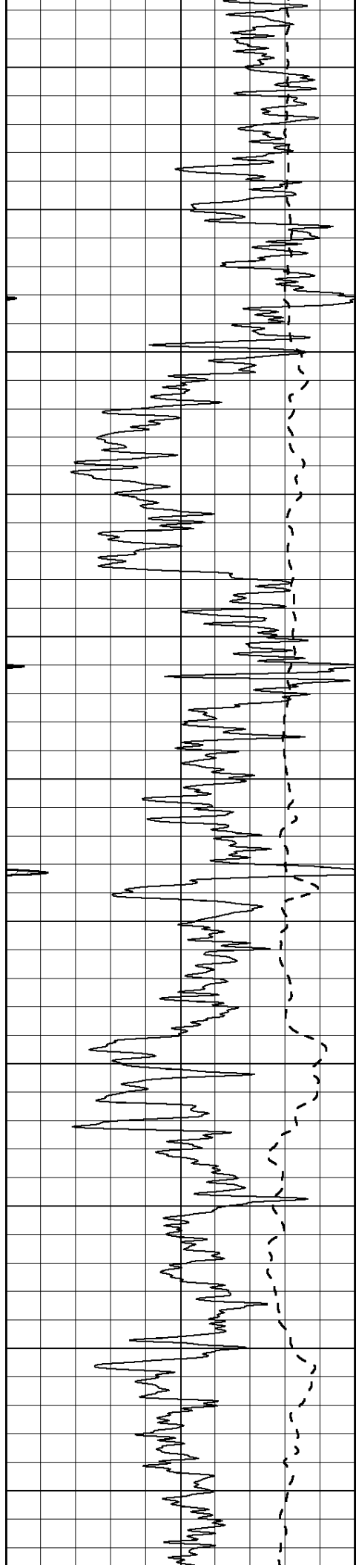


**MAIN SECTION**

Database File: 409696ddn.db  
 Dataset Pathname: pass3.9  
 Presentation Format: dil2  
 Dataset Creation: Fri Oct 19 22:47:48 2012 by Calc Open-Cased 110302  
 Charted by: Depth in Feet scaled 1:600

0	Gamma Ray (GAPI)	150	0	RLL3 (Ohm-m)	50
-100	SP (mV)	100	0	RILD (Ohm-m)	50
-----			-----		
			1000	CILD (mmho/m)	0
			50	RILD X10 (Ohm-m)	500
			50	RLL3 X10 (Ohm-m)	500





450

500

550

600

650

700

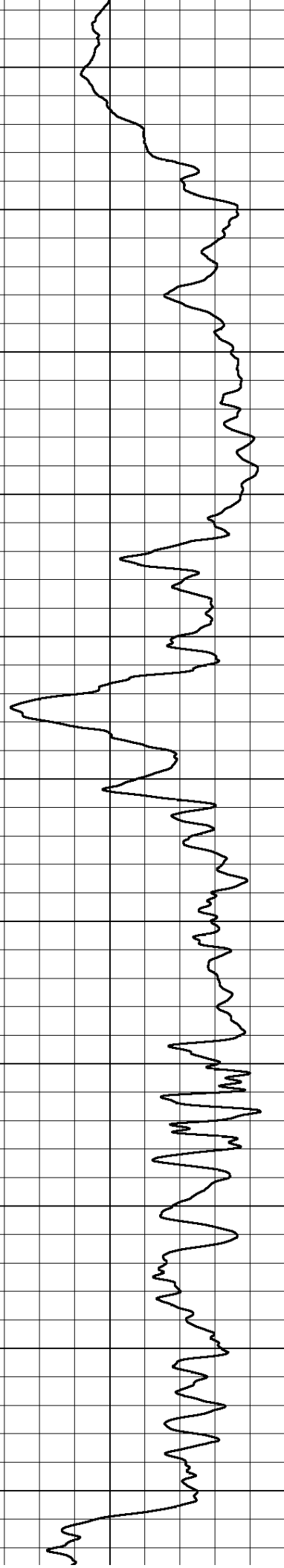
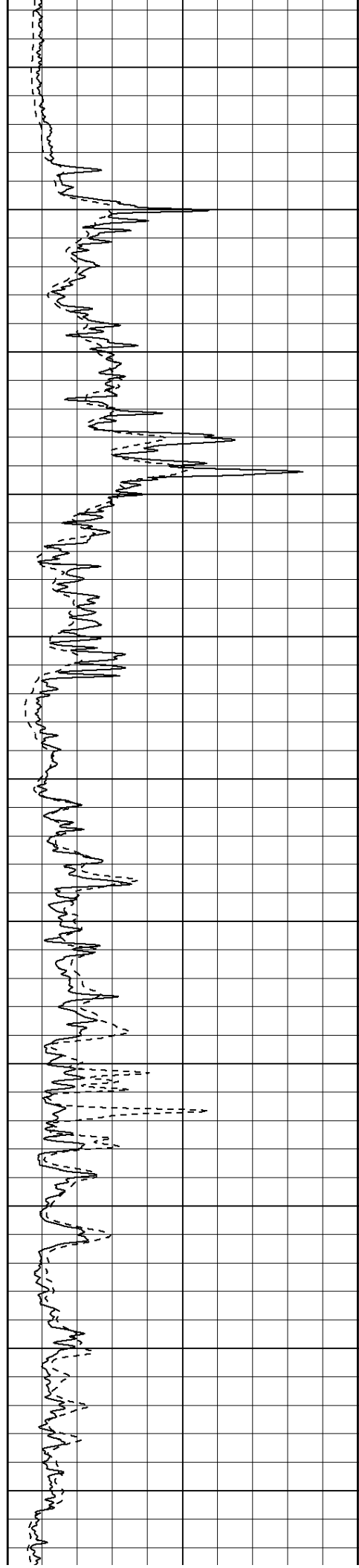
750

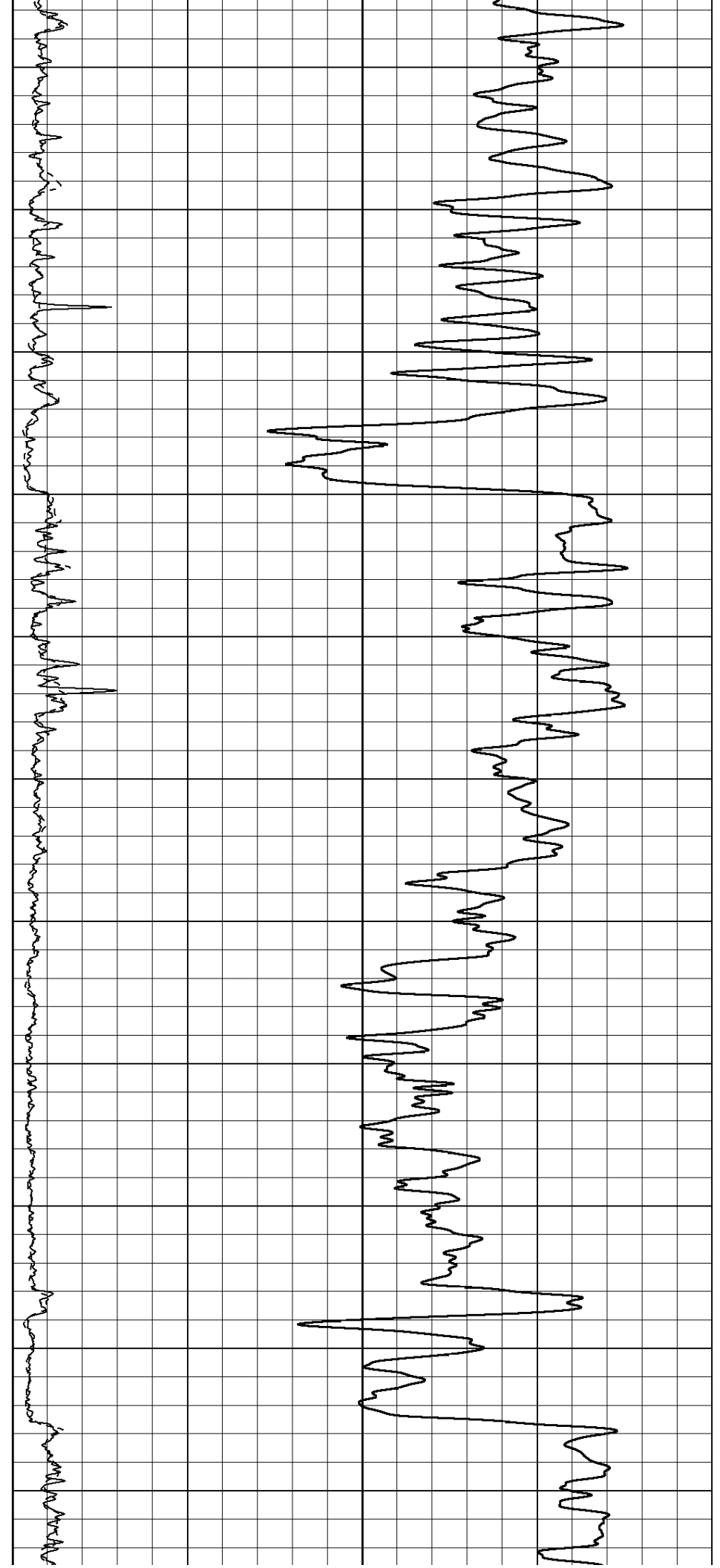
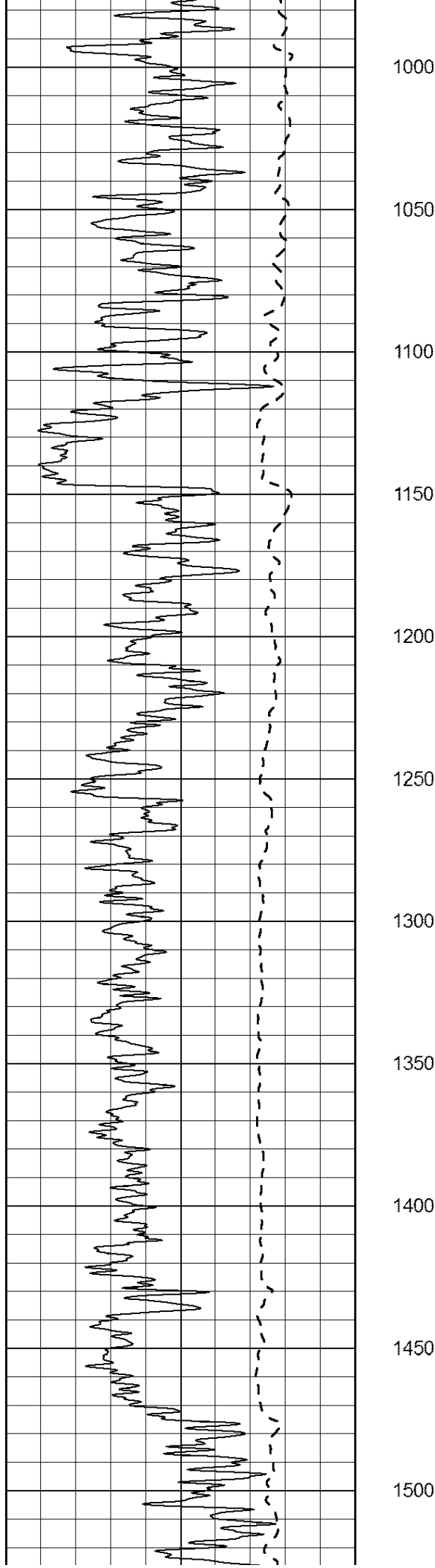
800

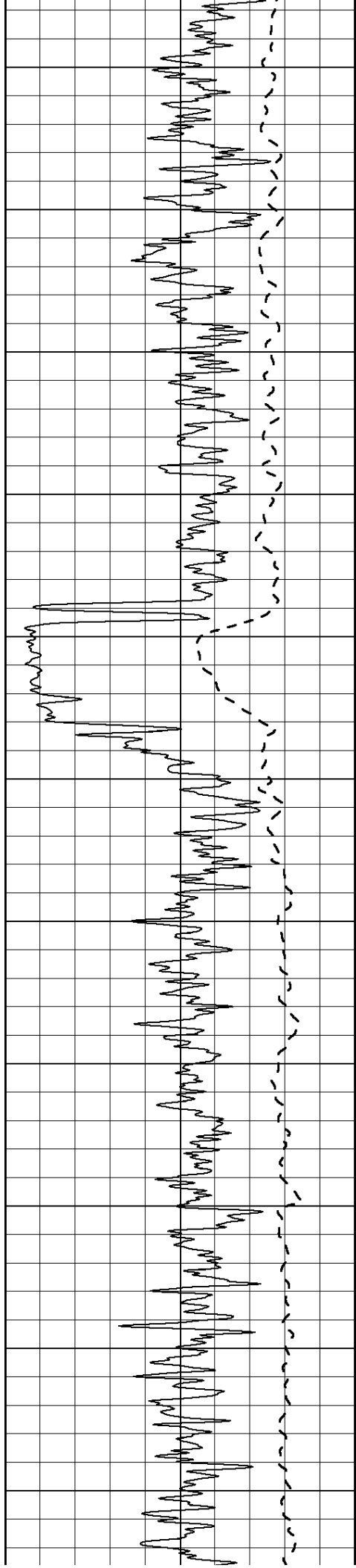
850

900

950







1550

1600

1650

1700

1750

1800

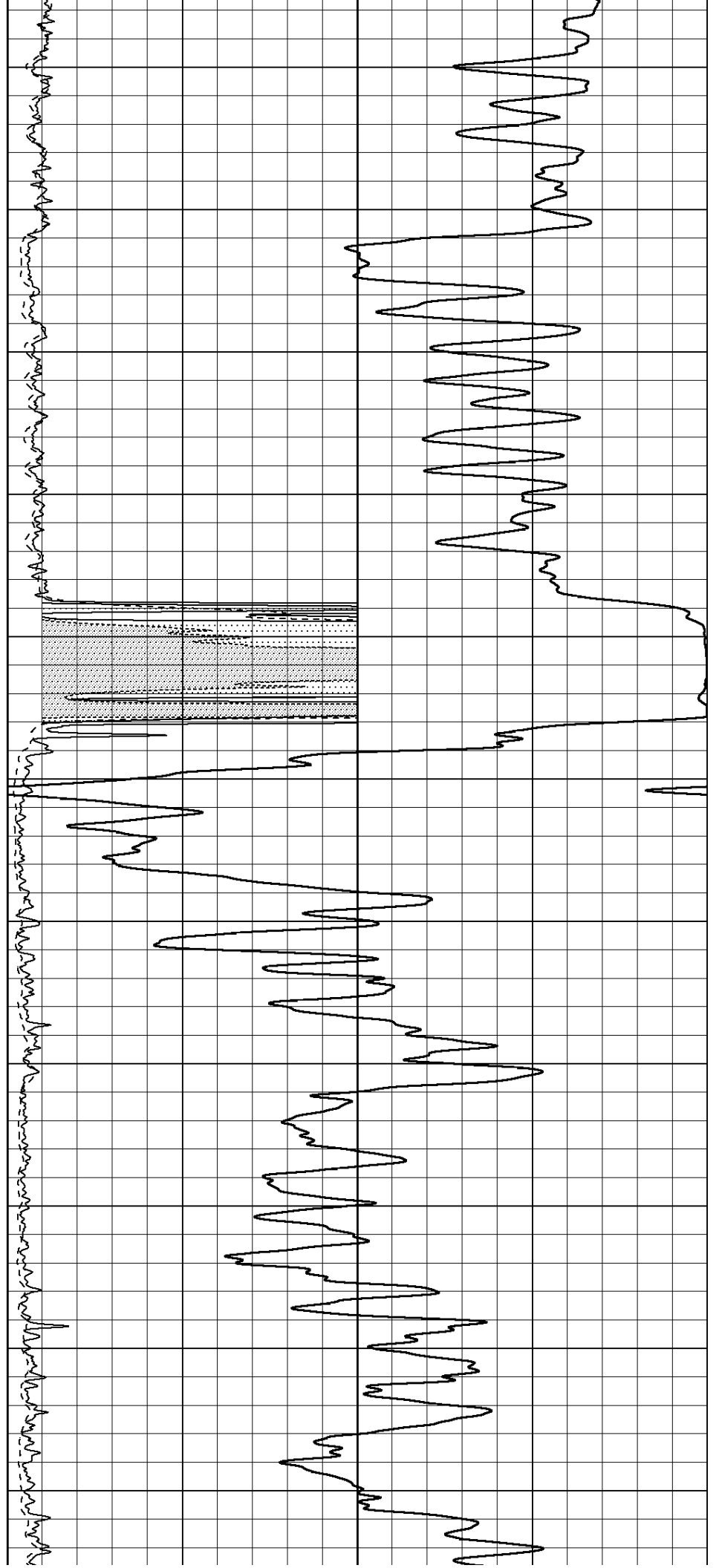
1850

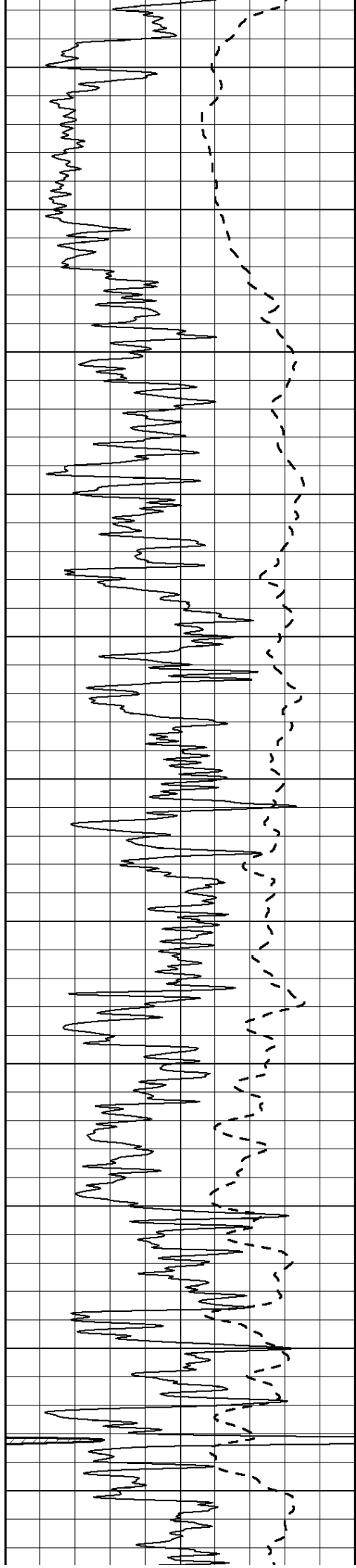
1900

1950

2000

2050





2100

2150

2200

2250

2300

2350

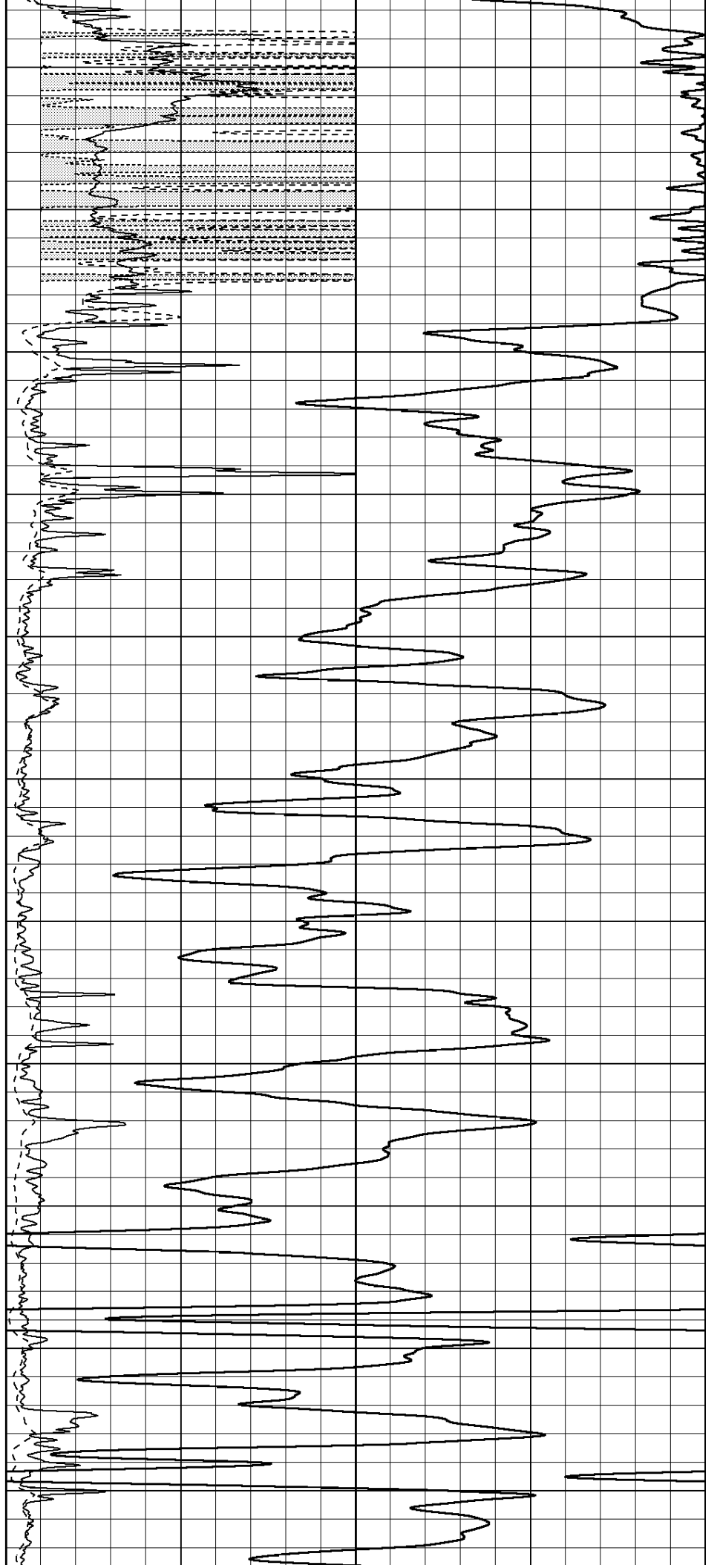
2400

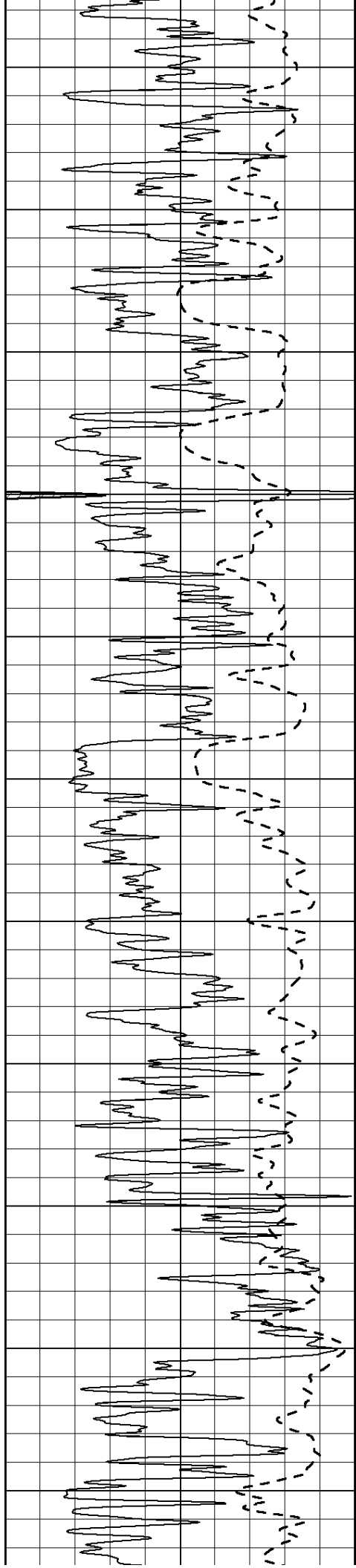
2450

2500

2550

2600





2650

2700

2750

2800

2850

2900

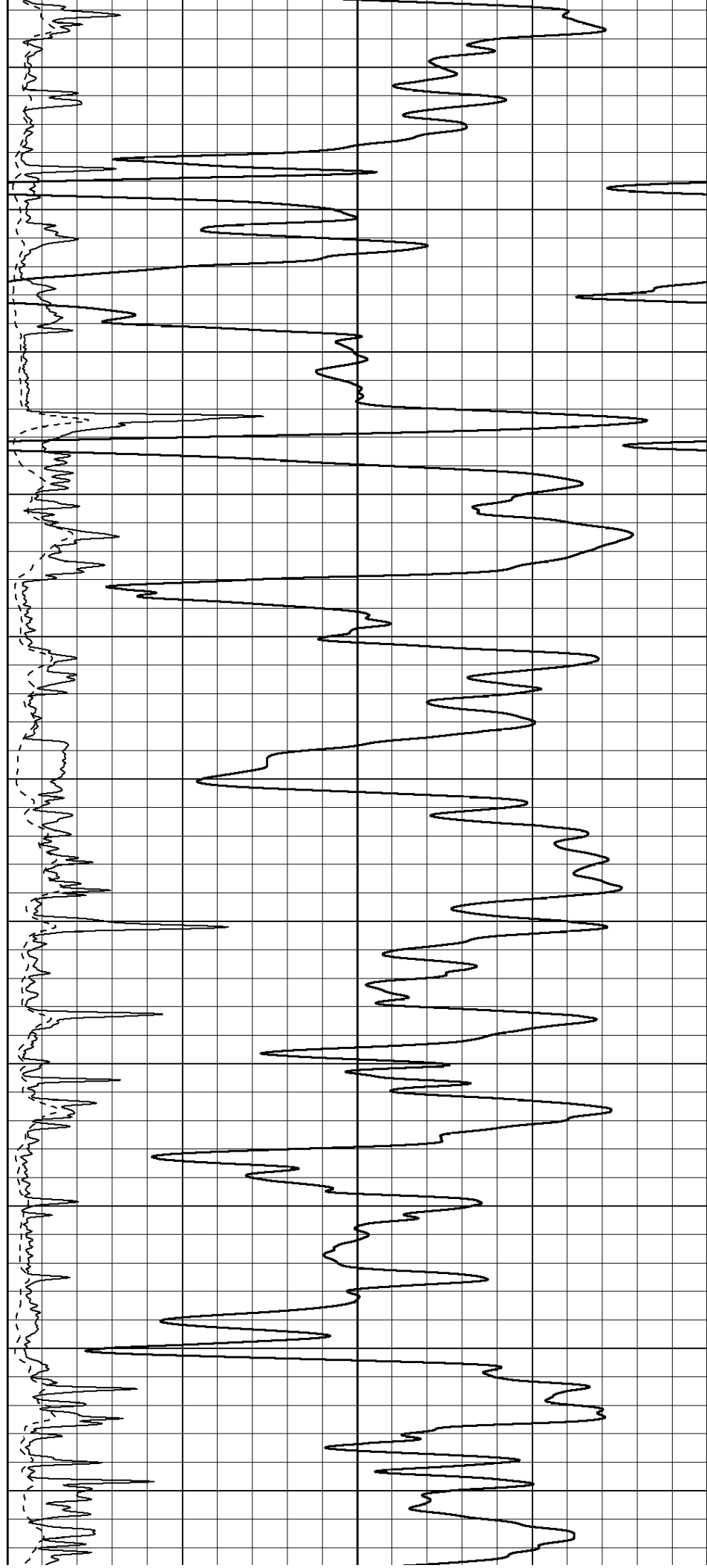
2950

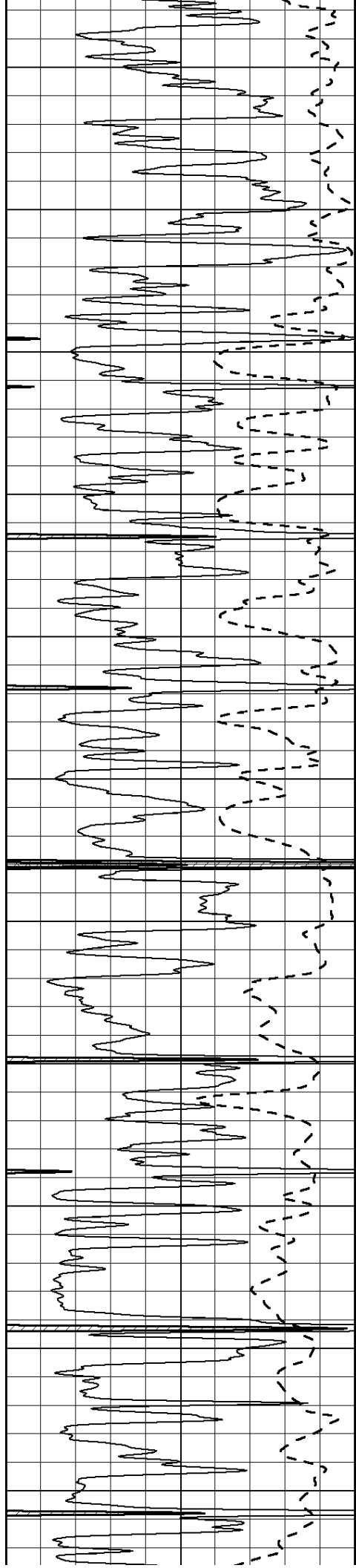
3000

3050

3100

3150





3200

3250

3300

3350

3400

3450

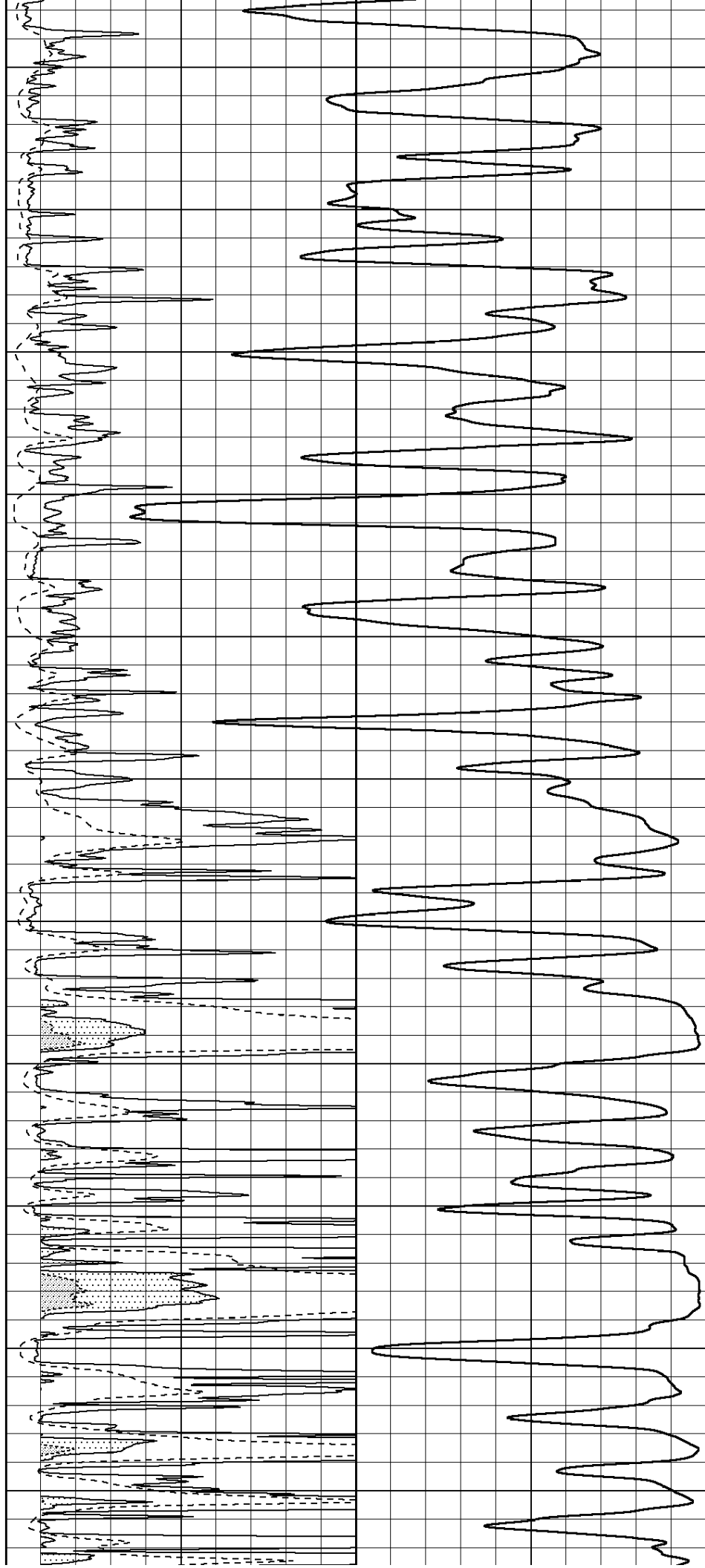
3500

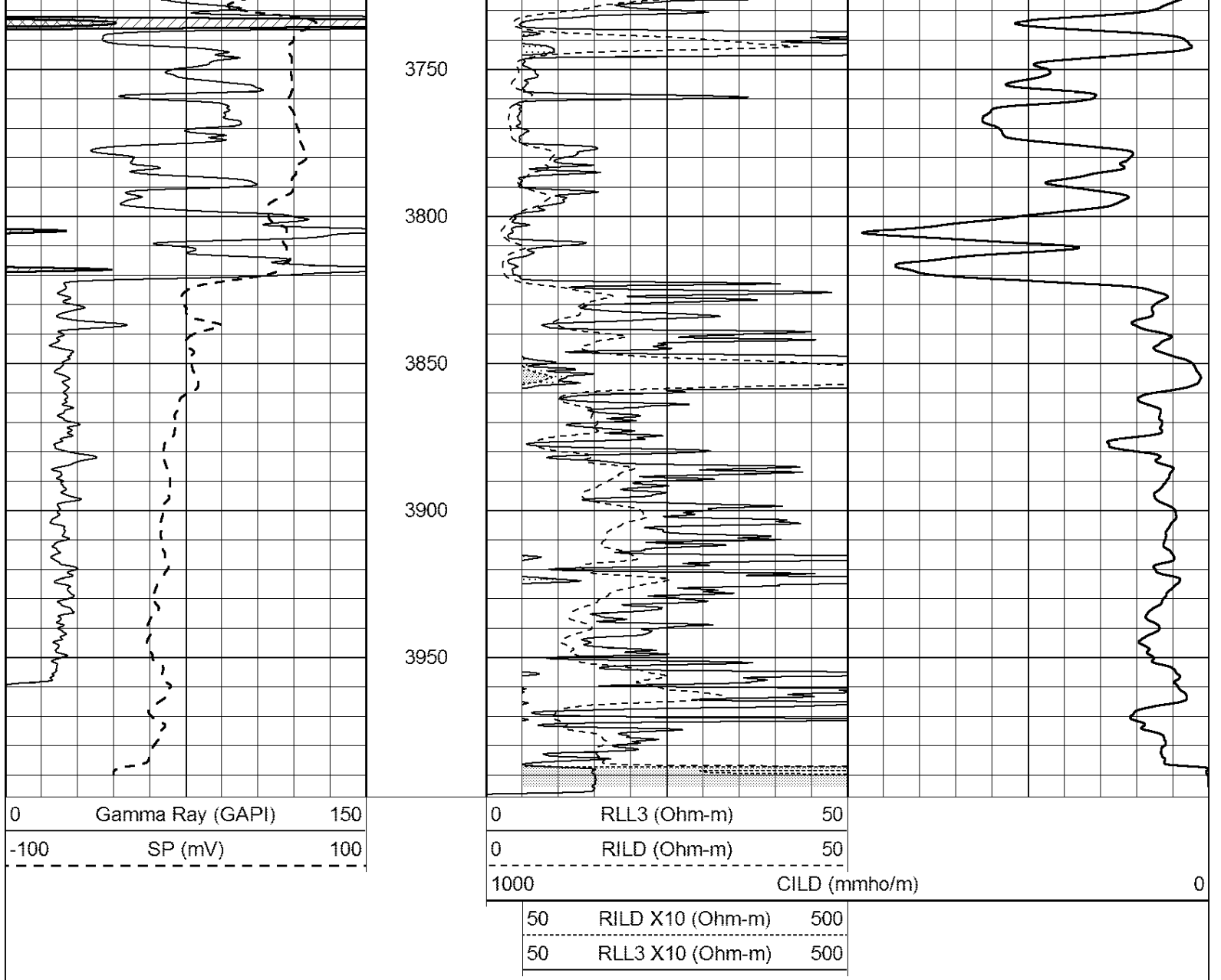
3550

3600

3650

3700





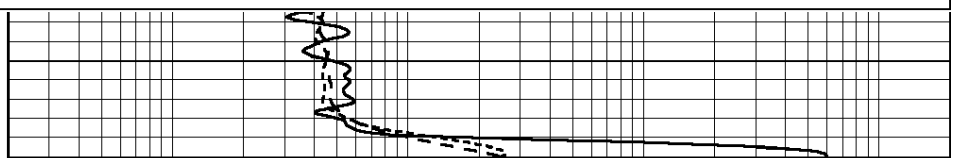
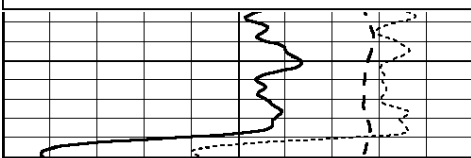
**COMPLETION  
& PRODUCTION  
SERVICES CO.**

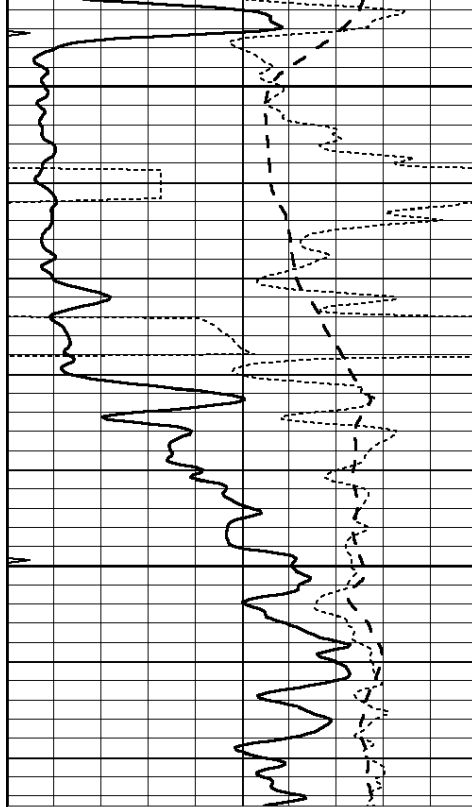
# ANHYDRITE

Database File: 409696ddn.db  
 Dataset Pathname: pass3.10  
 Presentation Format: dil  
 Dataset Creation: Fri Oct 19 22:48:23 2012 by Calc Open-Cased 110302  
 Charted by: Depth in Feet scaled 1:240

0	GAMMA RAY (GAPI)	150
-100	SP (mV)	100
-250	Rxo/Rt	50
0	MINMK	20

0.2	SHALLOW GUARD (Ohm-m)	2000
0.2	DEEP INDUCTION (Ohm-m)	2000
0.2	MEDIUM INDUCTION (Ohm-m)	2000

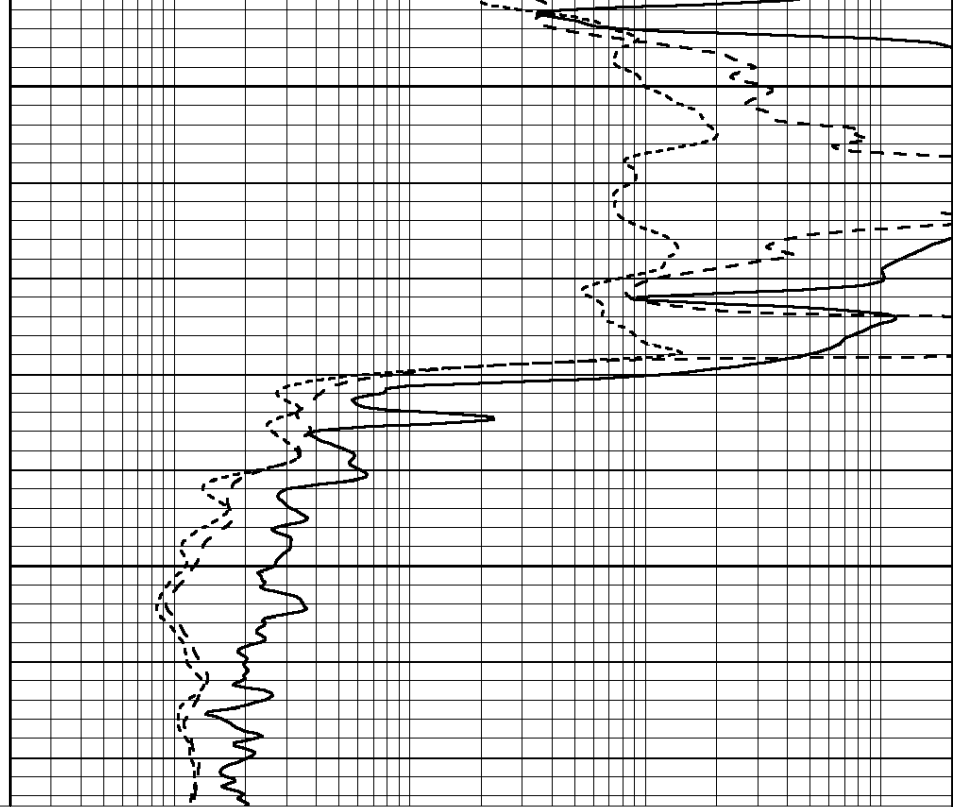




1750

1800

0	GAMMA RAY (GAPI)	150
-100	SP (mV)	100
-250	Rxo/Rt	50
0	MINMK	20



0.2	SHALLOW GUARD (Ohm-m)	2000
0.2	DEEP INDUCTION (Ohm-m)	2000
0.2	MEDIUM INDUCTION (Ohm-m)	2000

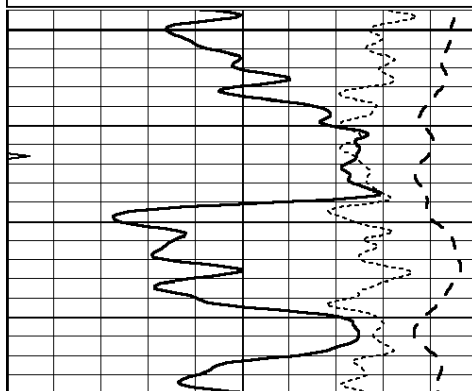


# MAIN SECTION

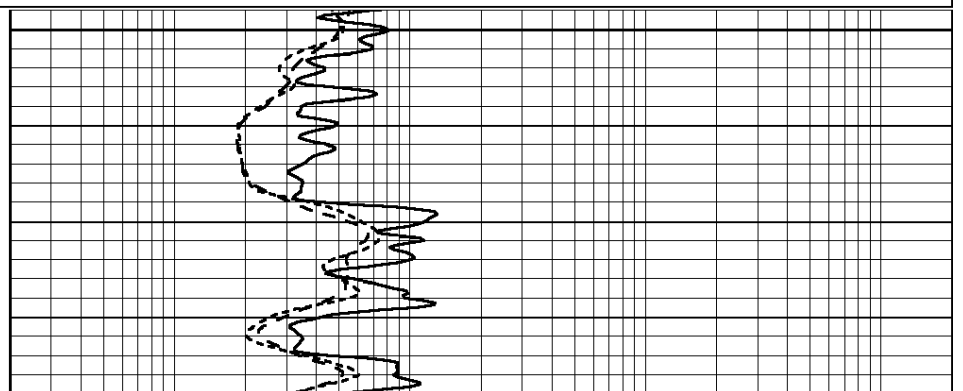
Database File: 409696ddn.db  
 Dataset Pathname: pass3.9  
 Presentation Format: dil  
 Dataset Creation: Fri Oct 19 22:47:48 2012 by Calc Open-Cased 110302  
 Charted by: Depth in Feet scaled 1:240

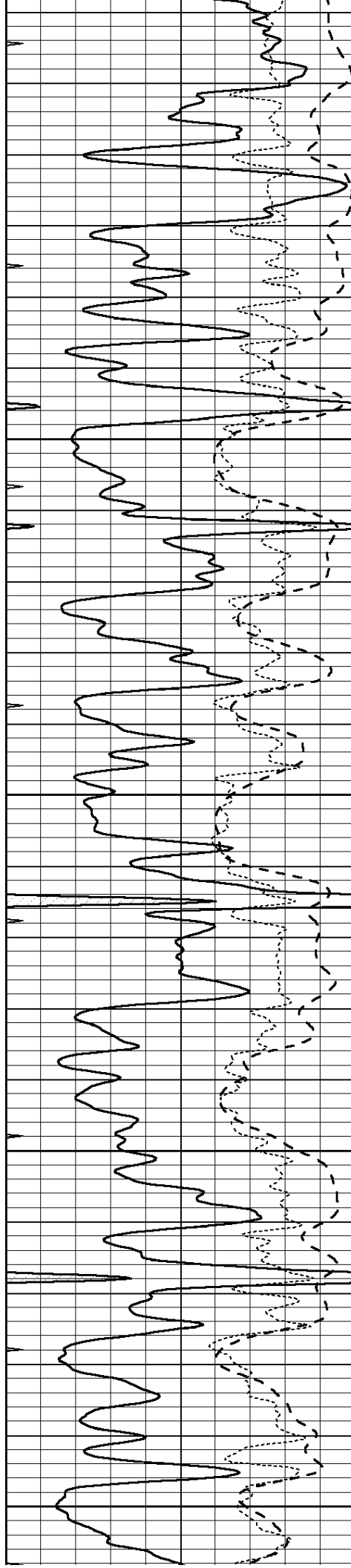
0	GAMMA RAY (GAPI)	150
-100	SP (mV)	100
-250	Rxo/Rt	50
0	MINMK	20

0.2	SHALLOW GUARD (Ohm-m)	2000
0.2	DEEP INDUCTION (Ohm-m)	2000
0.2	MEDIUM INDUCTION (Ohm-m)	2000



3200





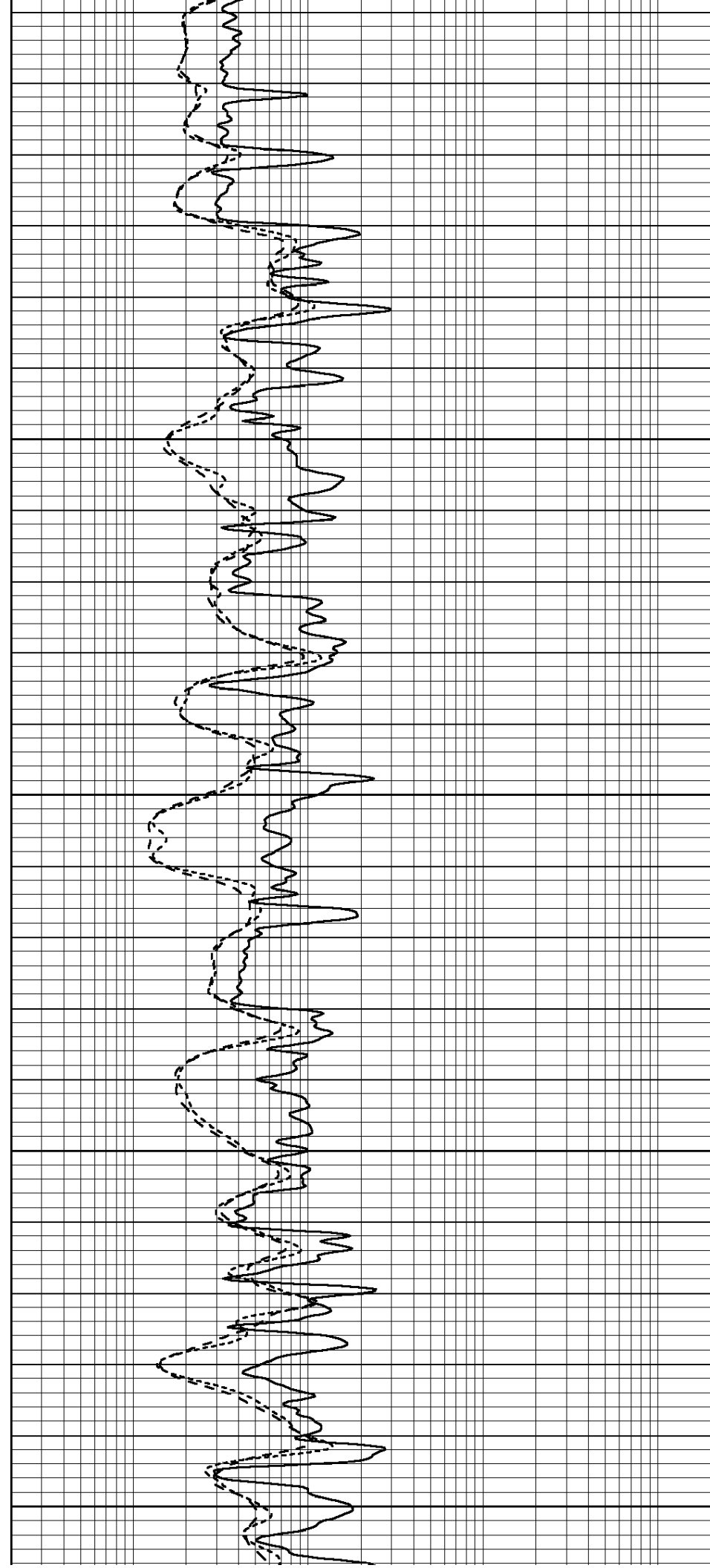
3250

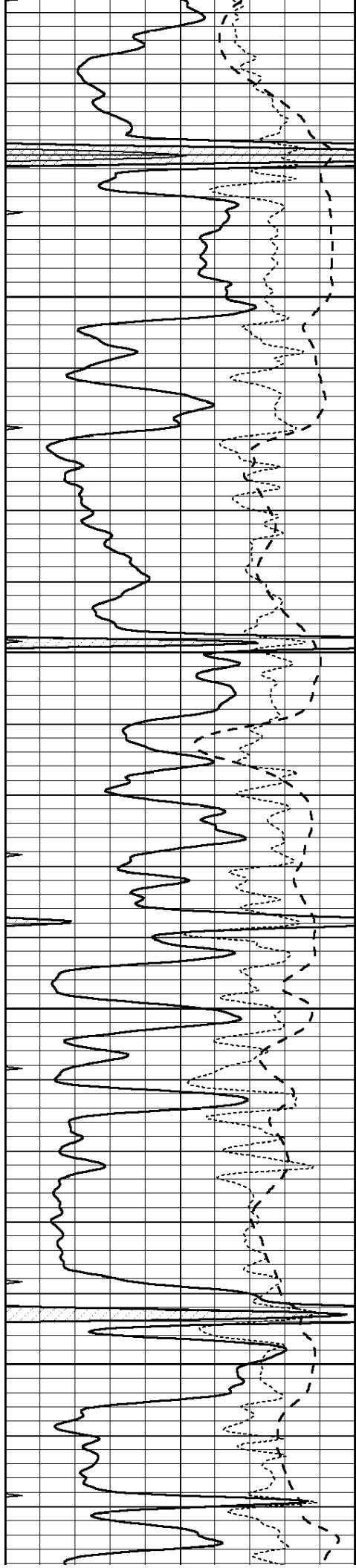
3300

3350

3400

3450



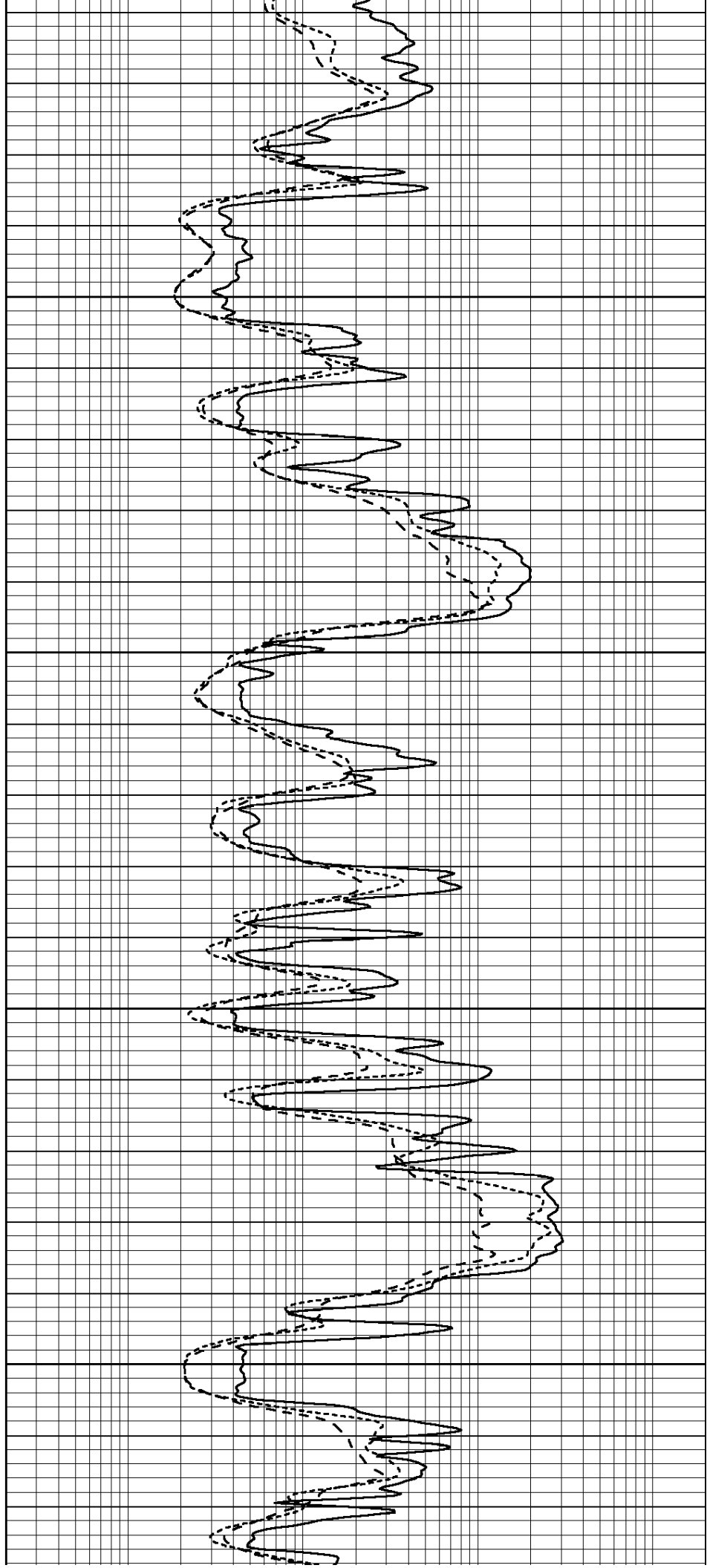


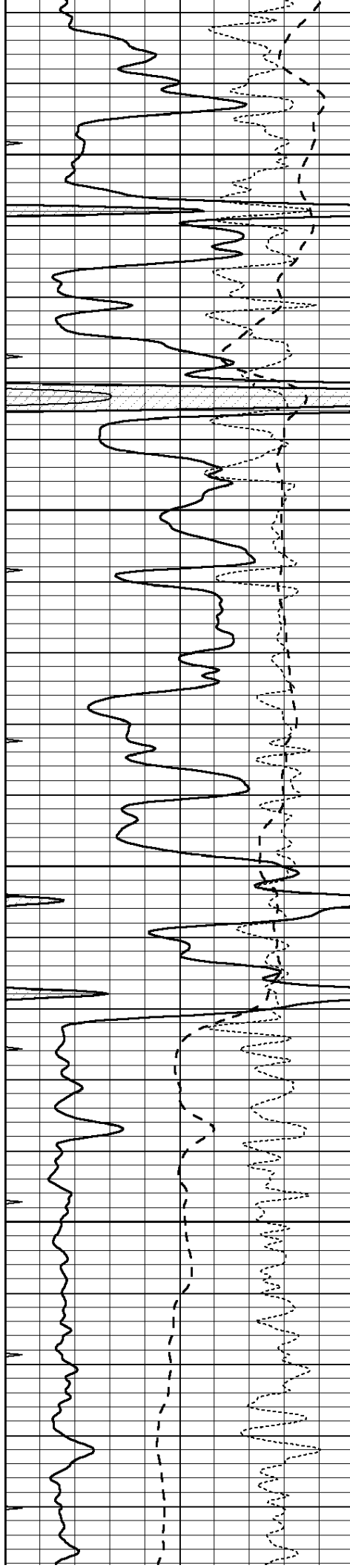
3500

3550

3600

3650



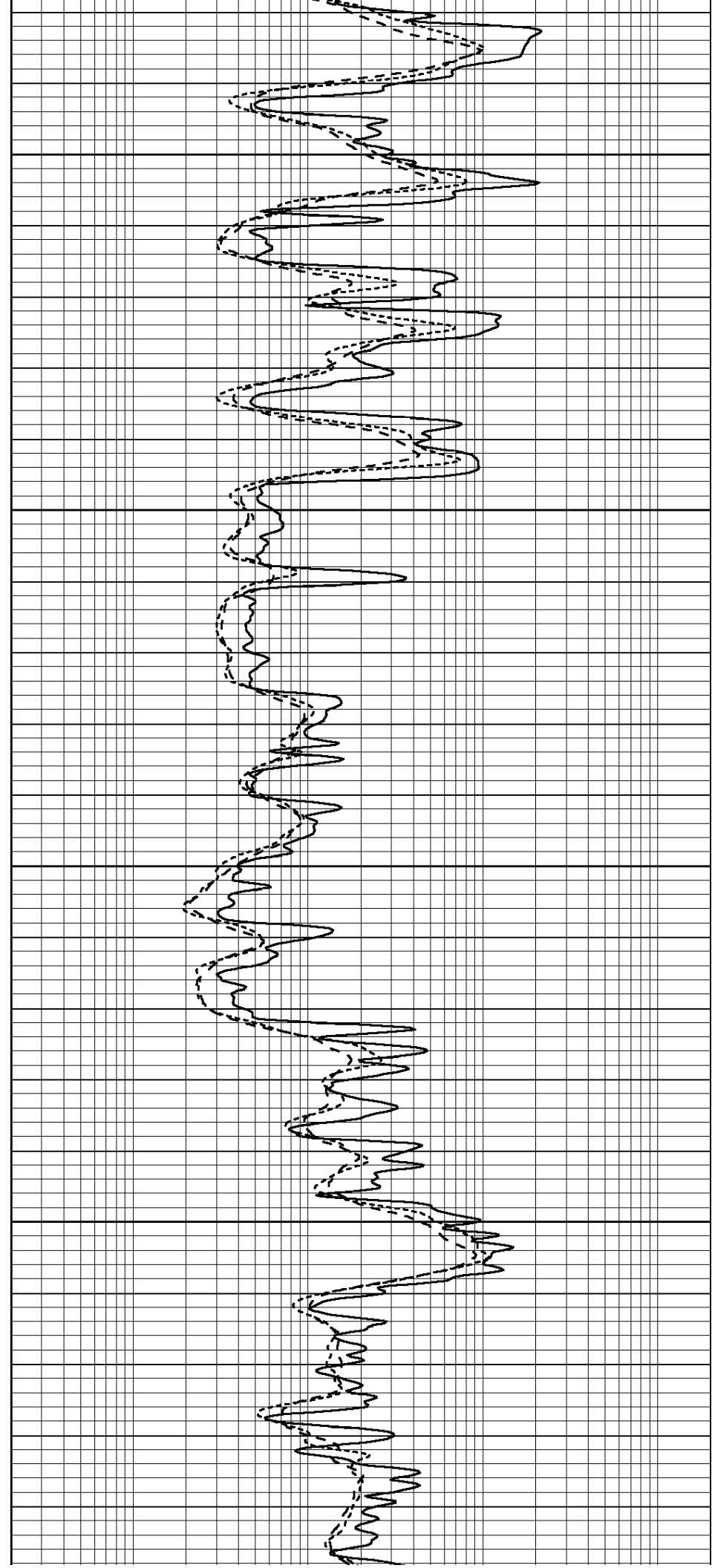


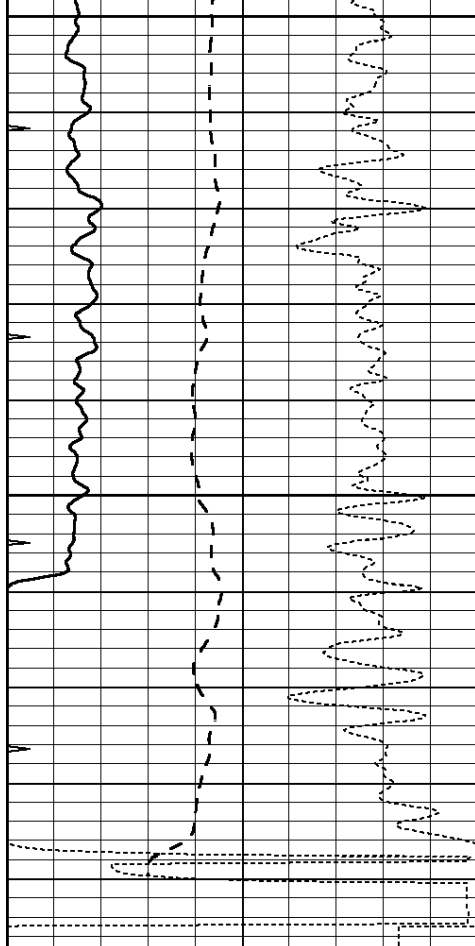
3700

3750

3800

3850

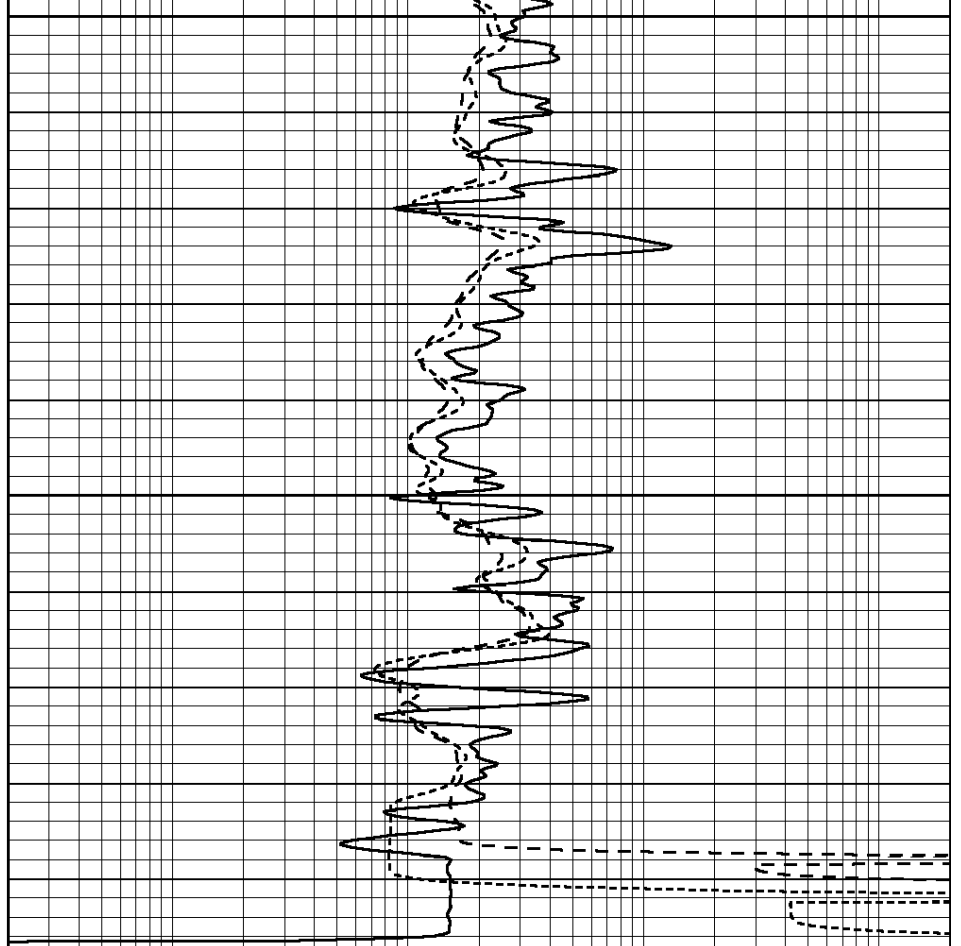




3900

3950

0	GAMMA RAY (GAPI)	150
-100	SP (mV)	100
-250	Rxo/Rt	50
0	MINMK	20



0.2	SHALLOW GUARD (Ohm-m)	2000
0.2	DEEP INDUCTION (Ohm-m)	2000
0.2	MEDIUM INDUCTION (Ohm-m)	2000

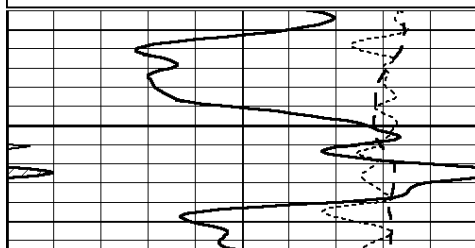


# REPEAT SECTION

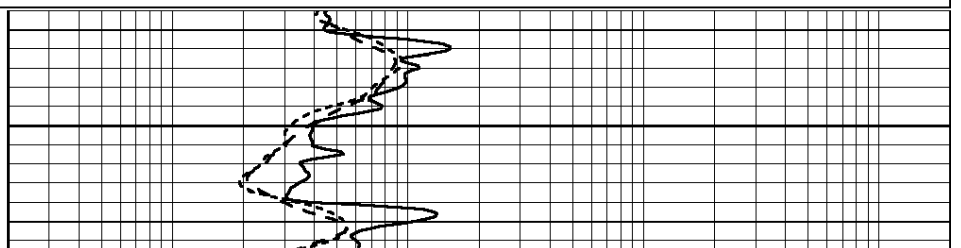
Database File: 409696ddn.db  
 Dataset Pathname: pass2.5  
 Presentation Format: dil  
 Dataset Creation: Fri Oct 19 22:01:27 2012 by Calc Open-Cased 110302  
 Charted by: Depth in Feet scaled 1:240

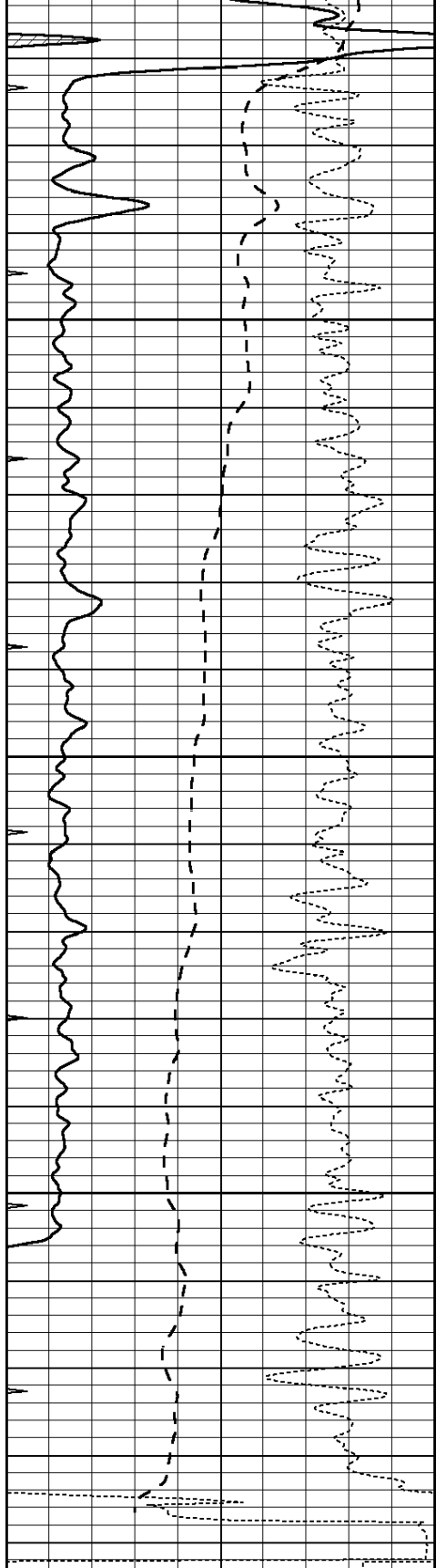
0	GAMMA RAY (GAPI)	150
-100	SP (mV)	100
-250	Rxo/Rt	50
0	MINMK	20

0.2	SHALLOW GUARD (Ohm-m)	2000
0.2	DEEP INDUCTION (Ohm-m)	2000
0.2	MEDIUM INDUCTION (Ohm-m)	2000



3800



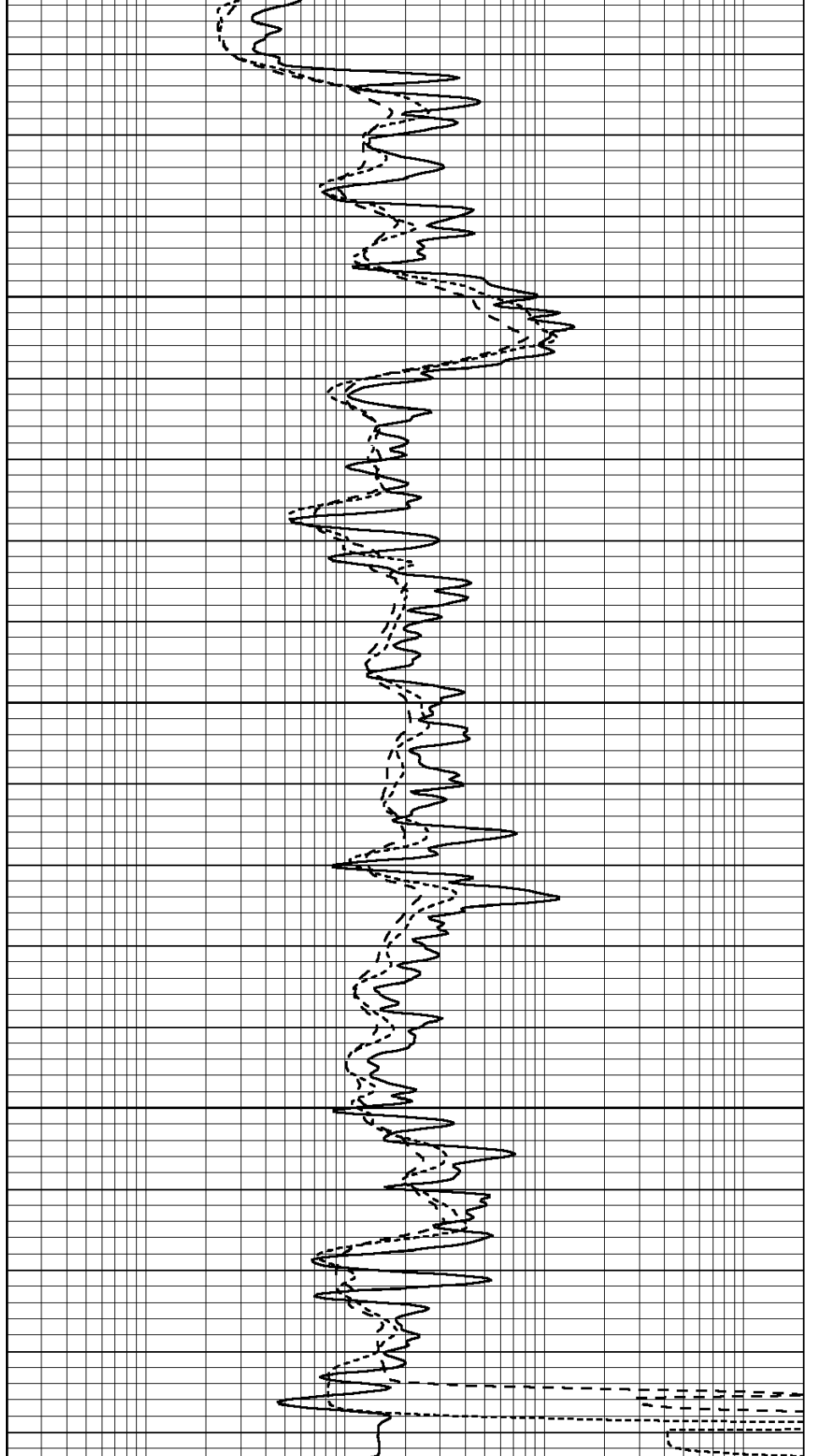


0	GAMMA RAY (GAPI)	150
-100	SP (mV)	100
-250	Rxo/Rt	50
0	MINMK	20

3850

3900

3950



0.2	SHALLOW GUARD (Ohm-m)	2000
0.2	DEEP INDUCTION (Ohm-m)	2000
0.2	MEDIUM INDUCTION (Ohm-m)	2000

Dual Induction Calibration Report

Serial-Model: DIL4-GEAR  
 Performed: Fri Oct 19 21:29:05 2012

Loop:	Readings			References			Results	
	Air	Loop		Air	Loop		m	b
Deep	0.008	0.666	V	0.000	400.000	mmho/m	570.000	-5.000
Medium	-0.003	0.769	V	0.000	462.500	mmho/m	560.000	-3.000
Internal:	Zero	Cal		Zero	Cal		m	b
Deep	0.013	0.651	V	0.000	400.000	mmho/m	627.541	-8.365
Medium	0.020	0.754	V	0.000	462.500	mmho/m	630.311	-12.549

Litho Density Calibration Report  
 Serial: 003N Model: PRB  
 Performed Tue Sep 08 14:14:44 2009

Litho Density Calibration

	Background	Magnesium	Aluminum	Sandstone	
Window 1	2042.6	12312.8	4225.8	13758.4	cps
Window 2	1855.8	10134.7	3624.2	11113.1	cps
Window 3	1639.4	6760.2	2716.3	7260.3	cps
Window 4	466.4	469.2	466.1	476.5	cps
Long Space	0.0	8278.9	1768.4	9257.4	cps
Short Space	2.2	2377.3	1544.1	2574.2	cps
Rho		1.7100	2.5900	1.3800	g/cc
Pe			2.5700	1.5500	
Rib Angle	: 44.4	Rib Slope	: 0.979	Density/Spine Ratio	: 0.549
Spine Angle	: 74.4	Spine Slope	: 3.577	Spine Intercept	: -18.8

Caliper

	Readings	Reference
Low Ref	3.4	8.0
High Ref	5.0	15.0
	Gain: 4.5	Offset: -7.3

Compensated Neutron Calibration Report

Serial Number: 070808  
 Tool Model: Probe

PRE-SURVEY VERIFICATION

Detector	Readings	Measured	Target
Short Space	cps		
Long Space	cps	pu	pu

POST-SURVEY VERIFICATION

Detector	Readings	Measured	Target
Short Space	cps		
Long Space	cps	pu	pu

Gamma Ray Calibration Report

Serial Number: 070559  
 Tool Model: OPEN GP

Tool Model:  
Performed:

OPEN\_CRK  
Wed Sep 19 15:58:00 2012

Calibrator Value: 1.0 GAPI

Background Reading: 0.0 cps

Calibrator Reading: 1.0 cps

Sensitivity: 0.3000 GAPI/cps