



SUPERIOR
Hays,
Kansas

**COMPENSATED
DENSITY / NEUTRON
LOG**

Company MAI OIL OPERATIONS, INC.
Well SCHMIDT - FLEGLER UNIT #2
Field KENNEBEC
County RUSSELL
State KANSAS

Company MAI OIL OPERATIONS, INC.
Well SCHMIDT - FLEGLER UNIT #2
Field KENNEBEC
County RUSSELL State KANSAS

Location: API # : 15-167-23785-0000
820' FSL & 88' FEL
SE - NE - SE - SE
SEC 4 TWP 15S RGE 14W
Permanent Datum GROUND LEVEL Elevation 1763
Log Measured From KELLY BUSHING 8' A.G.L.
Drilling Measured From KELLY BUSHING
Other Services DILMEL
Elevation
K.B. 1771
D.F. 1769
G.L. 1763

Date	4/3/12	
Run Number	ONE	
Depth Driller	3298	
Depth Logger	3298	
Bottom Logged Interval	3274	
Top Log Interval	2200	
Casing Driller	8 5/8"@336'	
Casing Logger	334	
Bit Size	7 7/8"	
Type Fluid in Hole	CHEMICAL MUD	CHLORIDES 7,700 PPM
Density / Viscosity	9.3/48	
pH / Fluid Loss	10.5/10.0	
Source of Sample	FLOWLINE	
Rm @ Meas. Temp	.600@70F	
Rmt @ Meas. Temp	.450@70F	
Rmc @ Meas. Temp	.720@70F	
Source of Rmf / Rmc	MEASUREMENT	
Rm @ BHT	.382@110F	
Time Circulation Stopped	2 HOURS	
Time Logger on Bottom	10:00 A.M.	
Maximum Recorded Temperature	110F	
Equipment Number	4010	
Location	HAYS, KANSAS	
Recorded By	JEFF LUEBBERS	
Witnessed By	JIM MUSGROVE	ALLEN BANGERT

<<< Fold Here >>>

All interpretations are opinions based on inferences from electrical or other measurements and we cannot and do not guarantee the accuracy or correctness of any interpretation, and we shall not, except in the case of gross or willful negligence on our part, be liable or responsible for any loss, costs, damages, or expenses incurred or sustained by anyone resulting from any interpretation made by any of our officers, agents or employees. These interpretations are also subject to our general terms and conditions set out in our current Price Schedule.

Comments

THANK YOU FOR USING SUPERIOR WELL SERVICE HAYS, KANSAS (785) 628-6395
DIRECTIONS
RUSSELL, KS. & I-70, 6S. ON HWY 281 TO "WALTERS RD." (JUST PAST RIVER BRIDGE) 1W., 1/2S., W. IN

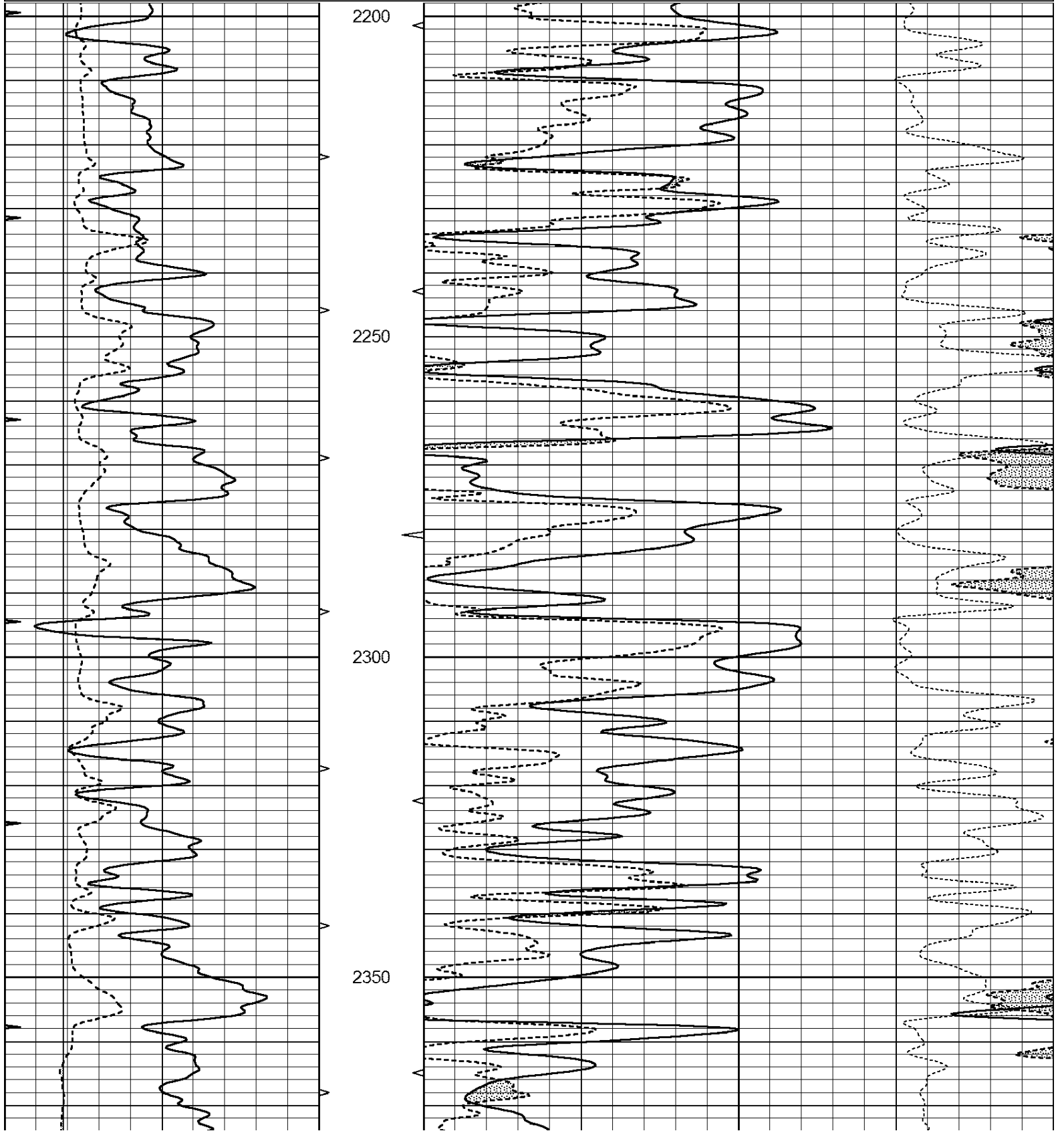


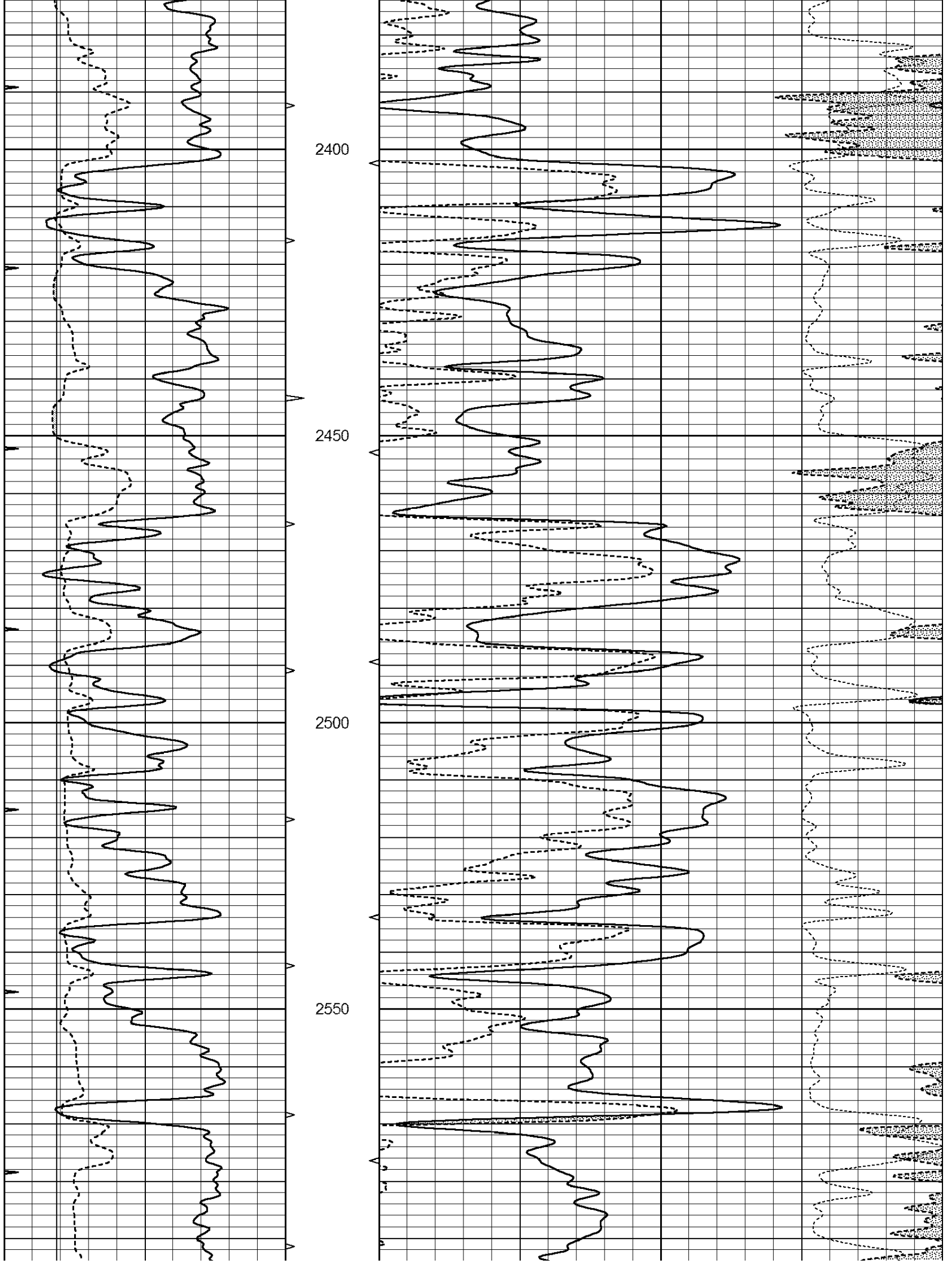
SUPERIOR
Hays,
Kansas

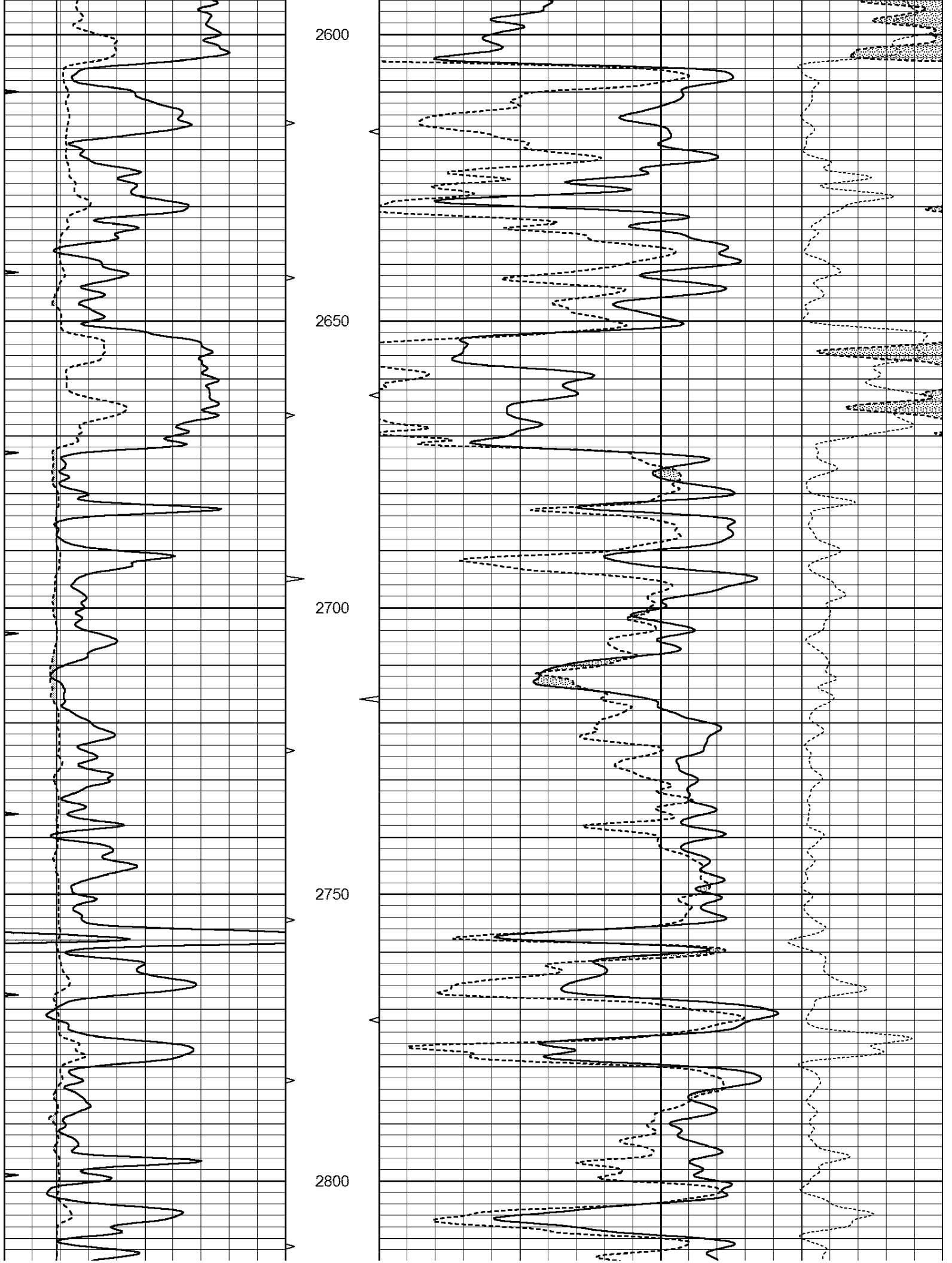
MAIN SECTION

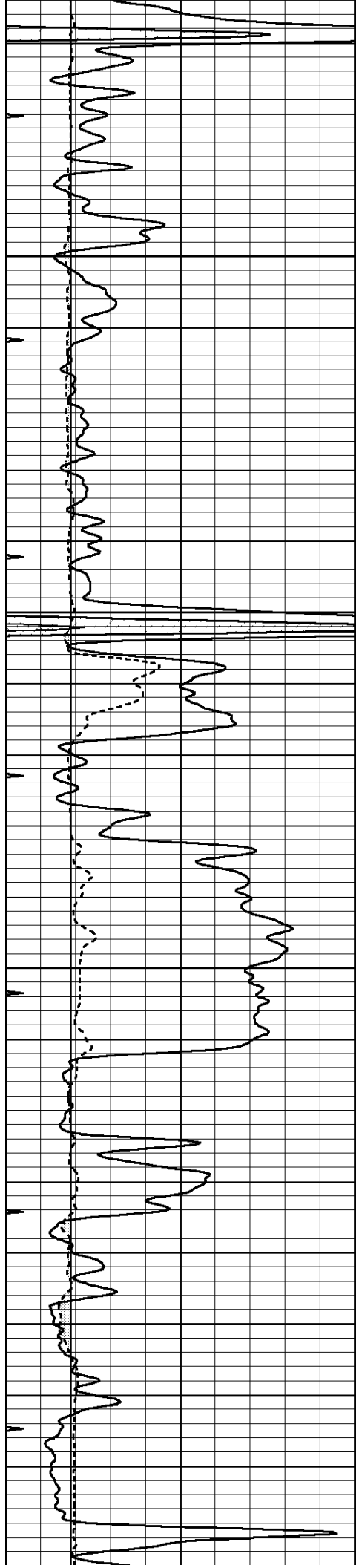
Database File: 408618ddn.db
 Dataset Pathname: pass3.10
 Presentation Format: den_neu
 Dataset Creation: Tue Apr 03 11:34:17 2012
 Charted by: Depth in Feet scaled 1:240

0	GAMMA RAY (GAPI)	150	ABHV	30	COMPENSATED DENSITY (pu)	-10
6	CALIPER (in)	16	10 (ft3)	0 30	COMPENSATED NEUTRON (pu)	-10
0	MINMK	20	TBHV		-0.25 CORRECTION (g/cc)	0.25
			0 (ft3)	10		







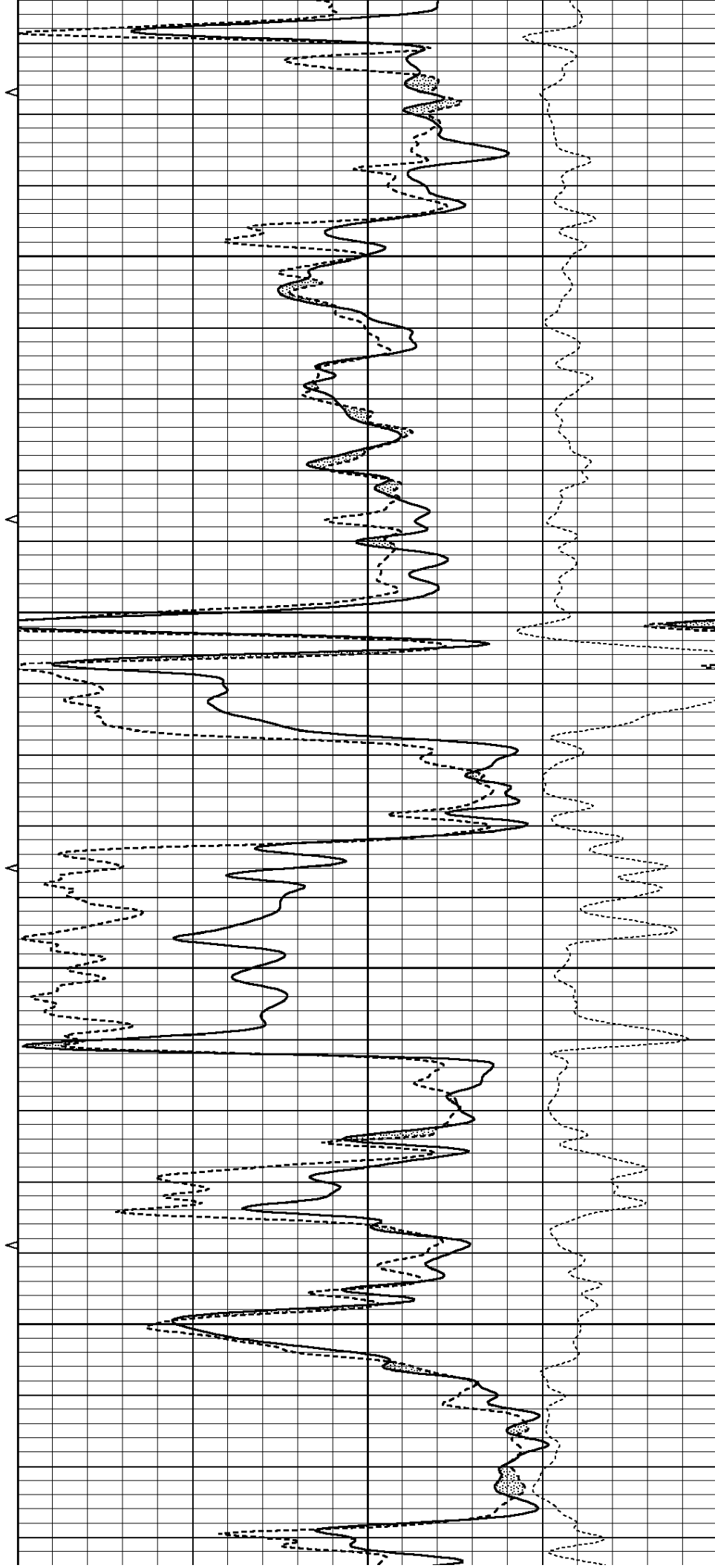


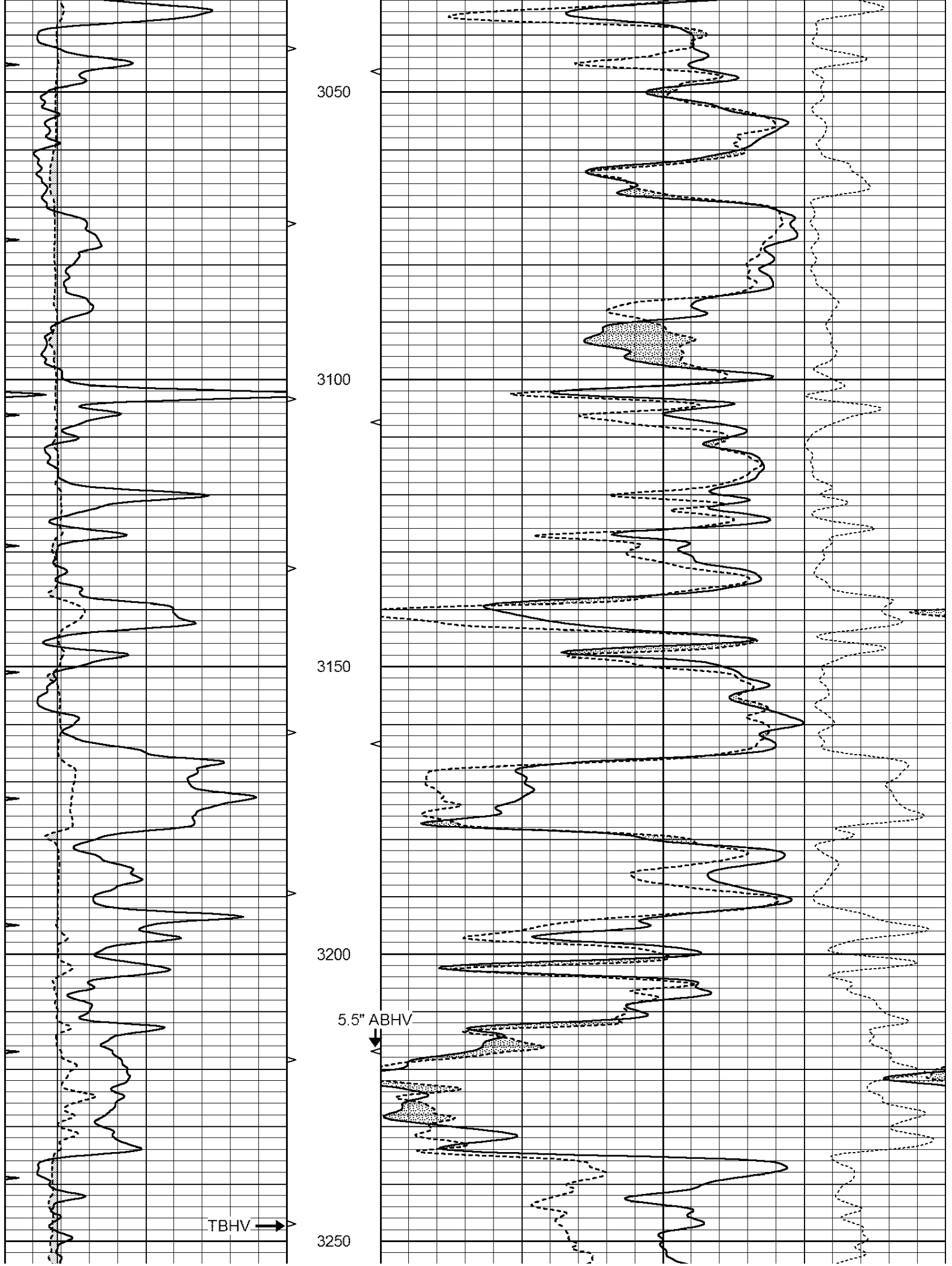
2850

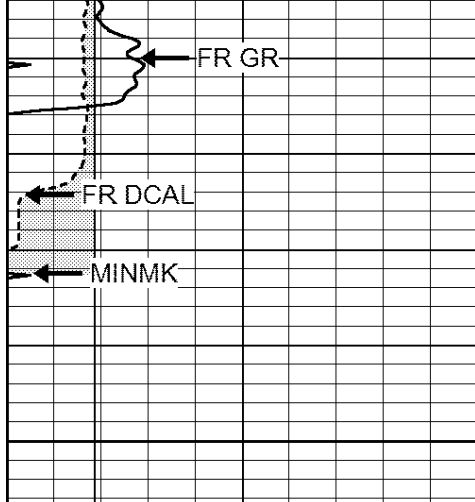
2900

2950

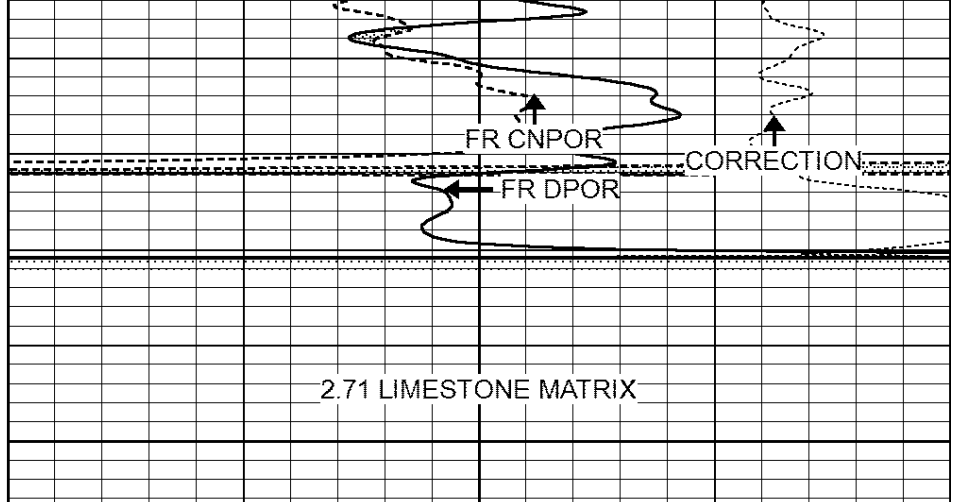
3000







LTD 3298
3300



0	GAMMA RAY (GAPI)	150	ABHV	30	COMPENSATED DENSITY (pu)	-10
6	CALIPER (in)	16	10 (ft3)	0 30	COMPENSATED NEUTRON (pu)	-10
0	MINMK	20	TBHV		-0.25 CORRECTION (g/cc)	0.25
			0 (ft3)	10		

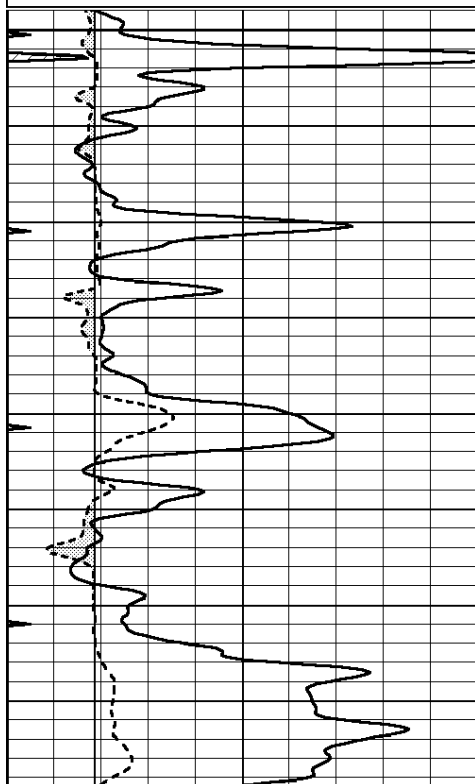


SUPERIOR
Hays,
Kansas

REPEAT SECTION

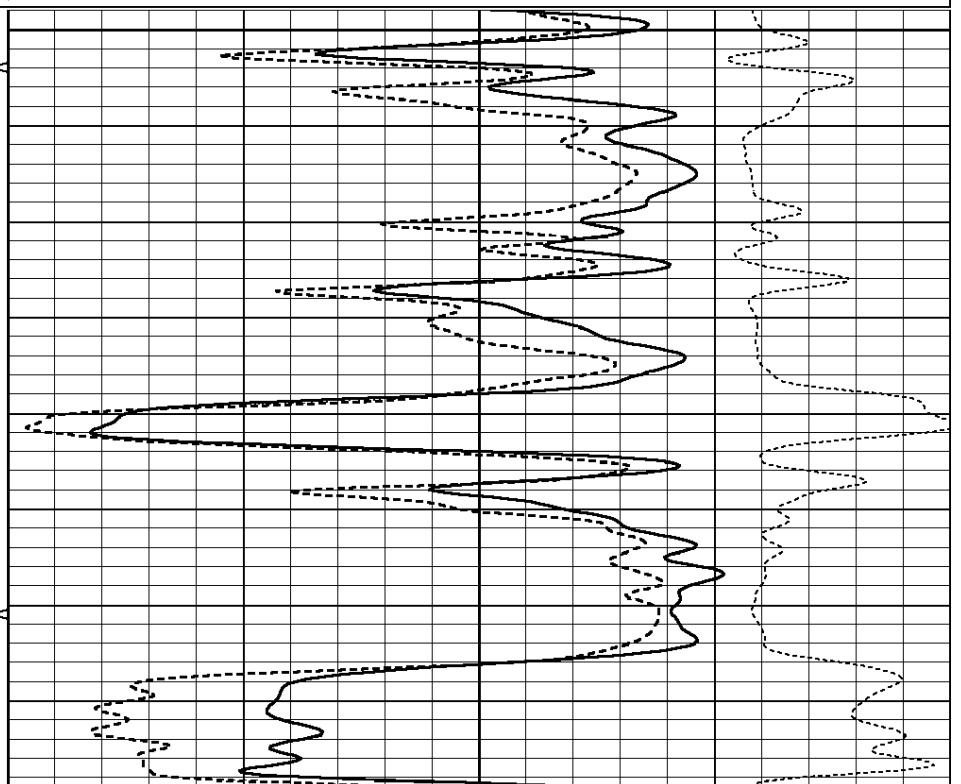
Database File: 408618ddn.db
 Dataset Pathname: pass2.4
 Presentation Format: den_neu
 Dataset Creation: Tue Apr 03 11:20:32 2012
 Charted by: Depth in Feet scaled 1:240

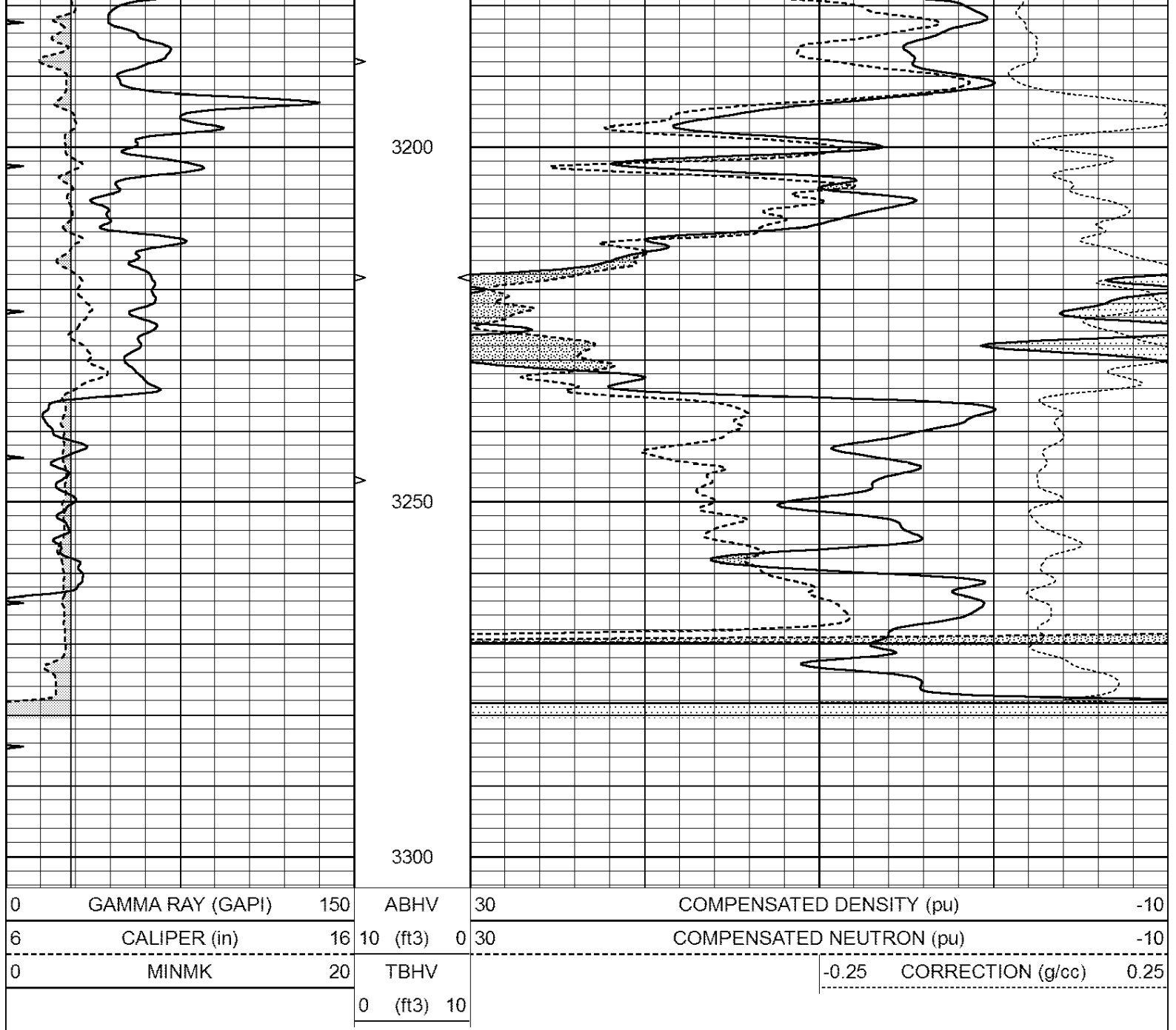
0	GAMMA RAY (GAPI)	150	ABHV	30	COMPENSATED DENSITY (pu)	-10
6	CALIPER (in)	16	10 (ft3)	0 30	COMPENSATED NEUTRON (pu)	-10
0	MINMK	20	TBHV		-0.25 CORRECTION (g/cc)	0.25
			0 (ft3)	10		



3100

3150





Calibration Report

Database File: 408618ddn.db
 Dataset Pathname: pass3.10
 Dataset Creation: Tue Apr 03 11:34:17 2012

Dual Induction Calibration Report

Serial-Model: DIL4-GEAR
 Performed: Sat Mar 24 18:51:21 2012

Loop:	Readings				References		Results	
	Air	Loop			Air	Loop	m	b
Deep	0.008	0.666	V	0.000	400.000	mmho/m	570.000	4.000
Medium	-0.003	0.769	V	0.000	462.500	mmho/m	560.000	5.000
Internal:	Zero	Cal		Zero	Cal		m	b
Deep	0.013	0.651	V	0.000	400.000	mmho/m	627.541	-8.365
Medium	0.020	0.754	V	0.000	462.500	mmho/m	630.311	-12.549

Litho Density Calibration Report
 Serial: 003N Model: PRB
 Performed Tue Sep 08 14:14:44 2009

Litho Density Calibration

	Background	Magnesium	Aluminum	Sandstone	
Window 1	2042.6	12312.8	4225.8	13758.4	cps
Window 2	1855.8	10134.7	3624.2	11113.1	cps
Window 3	1639.4	6760.2	2716.3	7260.3	cps
Window 4	466.4	469.2	466.1	476.5	cps
Long Space	0.0	8278.9	1768.4	9257.4	cps
Short Space	2.2	2377.3	1544.1	2574.2	cps
Rho		1.7100	2.5900	1.3800	g/cc
Pe			2.5700	1.5500	
Rib Angle	: 44.4	Rib Slope	: 0.979	Density/Spine Ratio	: 0.549
Spine Angle	: 74.4	Spine Slope	: 3.577	Spine Intercept	: -18.8

Caliper	Readings	Reference	
Low Ref	2.0	7.3	
High Ref	4.0	15.0	
	Gain: 3.8		Offset: -0.1

Compensated Neutron Calibration Report

Serial Number: 070808
 Tool Model: Probe

PRE-SURVEY VERIFICATION

Detector	Readings	Measured	Target
Short Space	cps		
Long Space	cps	pu	pu

POST-SURVEY VERIFICATION

Detector	Readings	Measured	Target
Short Space	cps		
Long Space	cps	pu	pu

Gamma Ray Calibration Report

Serial Number:	070559	
Tool Model:	OPEN_GR	
Performed:	Sat Mar 24 18:51:25 2012	
Calibrator Value:	1.0	GAPI
Background Reading:	0.0	cps
Calibrator Reading:	1.0	cps
Sensitivity:	0.3000	GAPI/cps