



DIGITAL LOG (785) 625-3858

Computer Processed Interpretation

API No. 15-135-25,373-00-00

Company Abercrombie Energy, LLC

Well Vogel No. 3-24

Field WCV

County Ness State Kansas

Location 330' FNL & 330' FWL Other Services RAG

Sec: 24 Twp: 19S Rge: 26W

Permanent Datum Ground Level Elevation 2618

Log Measured From Kelly Bushing 9 Ft. Above Perm. Datum

Drilling Measured From Kelly Bushing K.B. 2627 D.F. 2618 G.L. 2618

Date Recorded 4/21/2012

Depth Logger 4596

Curve Definitions

SW Water Saturation

SXO Water Saturation In The Flushed Zone

VCL Volume Of Clay

PHIE Density - Neutron Crossplot Shale Corrected

BWV Bulk Volume Water

BWMSXO Bulk Volume Water In Flushed Zone

DCAL Caliper

SPC SP Corrected For Baseline

DGA Apparent Grain Density

Payflag If: PHIE > 2 %, VCL < 40 %, SPC > -10 , SW < 40 % & SCAL < 10

Recorded By J. Long

Witnessed By Mikeal K. Maune

Analysis By Dale Legleiter

<<< Fold Here >>>

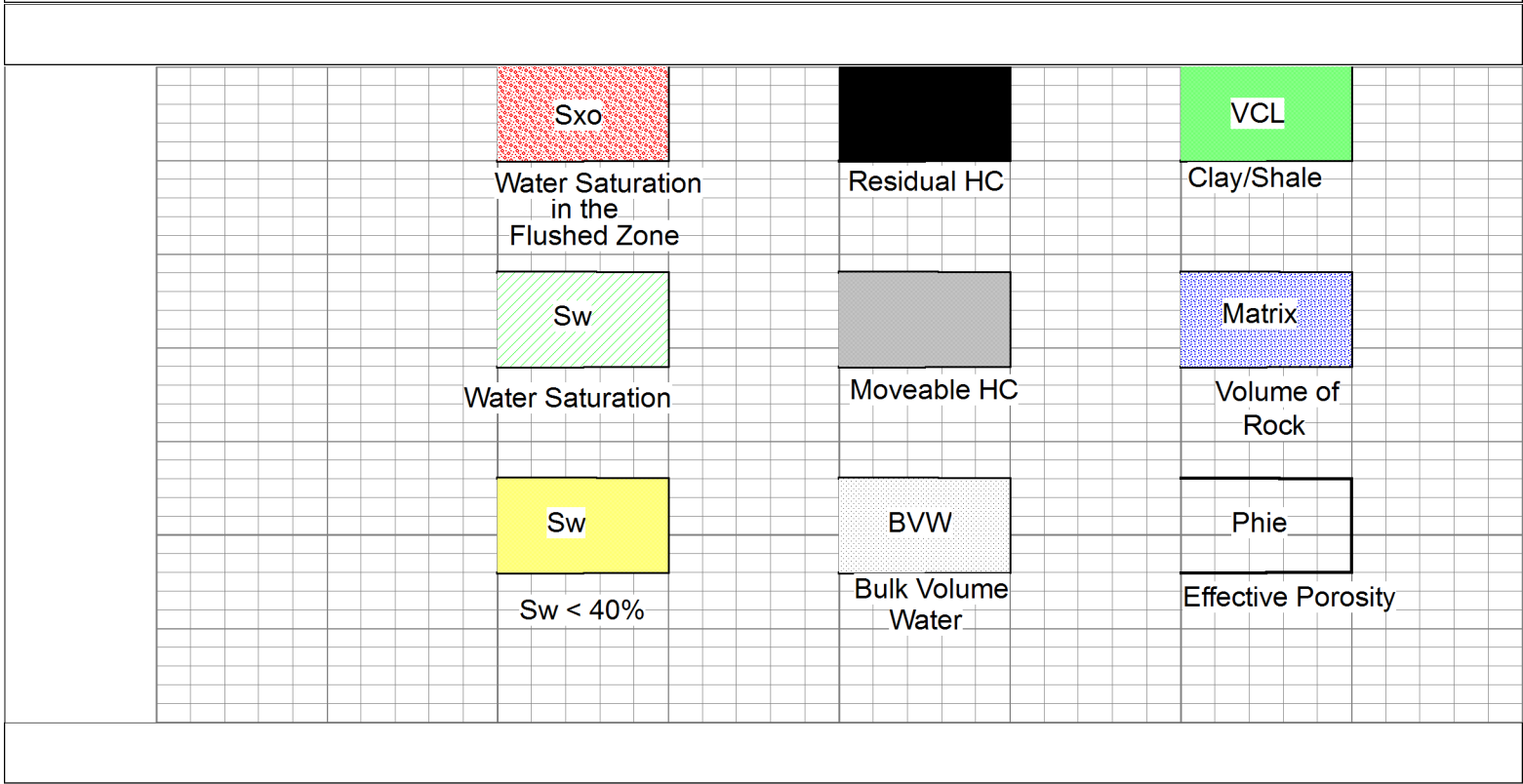
All interpretations are opinions based on inferences from electrical or other measurements and we cannot and do not guarantee the accuracy or correctness of any interpretation, and we shall not, except in the case of gross or willful negligence on our part, be liable or responsible for any loss, costs, damages, or expenses incurred or sustained by anyone resulting from any interpretation made by any of our officers, agents or employees. These interpretations are also subject to our general terms and conditions set out in our current Price Schedule.

Comments

Thank you for using Log-Tech, Inc. www.logtechinc.com

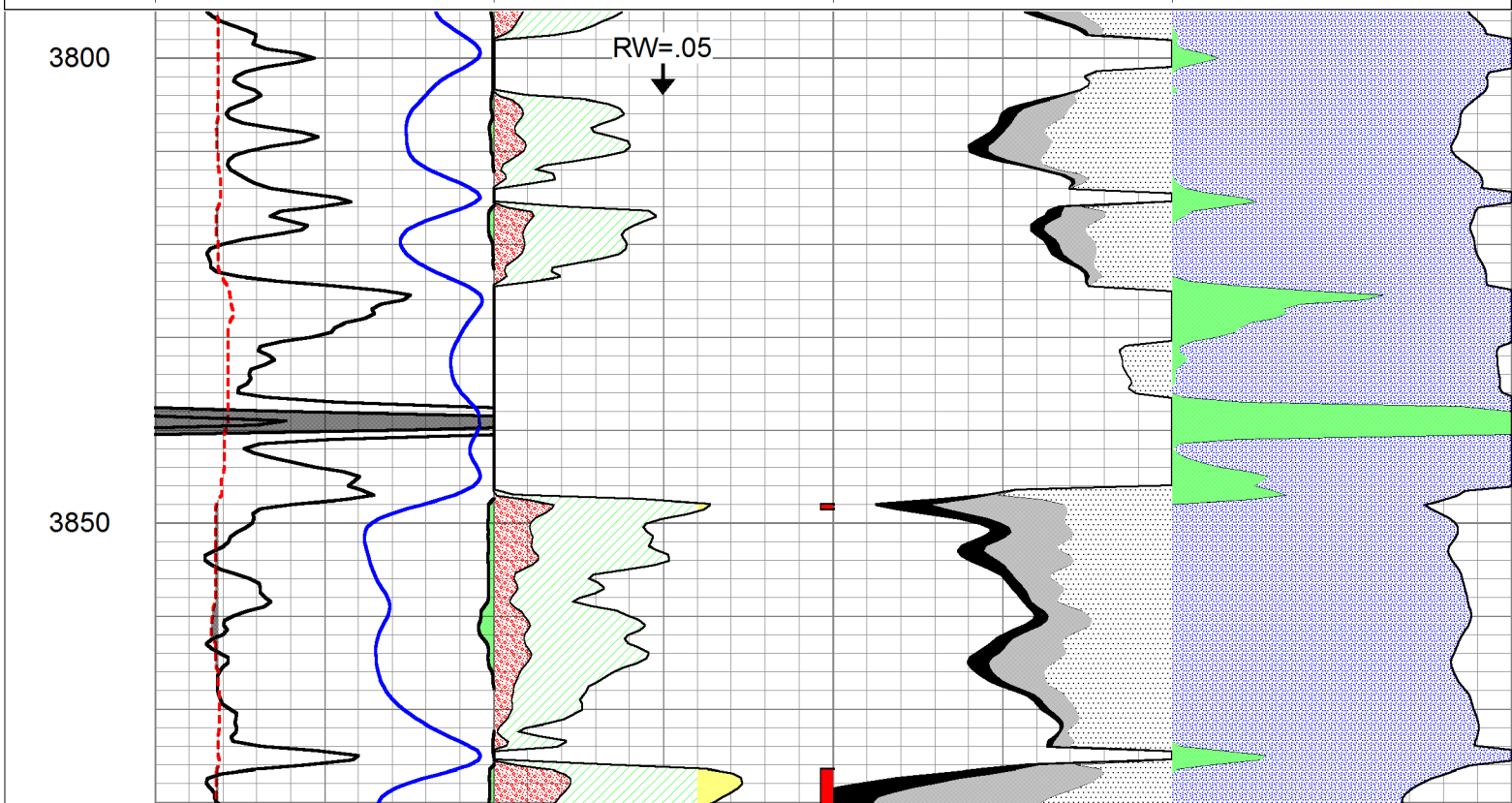
Beeler, (East Edge) 5 South on C Road to 80 Road, 1 1/2 East to D5 Road, 1/2 North to 85 Road, 1 East to Dead End, East through Cattle Guard, 1/4 North to Tank Battery, Take Left Fork, 1/2 West to Rig

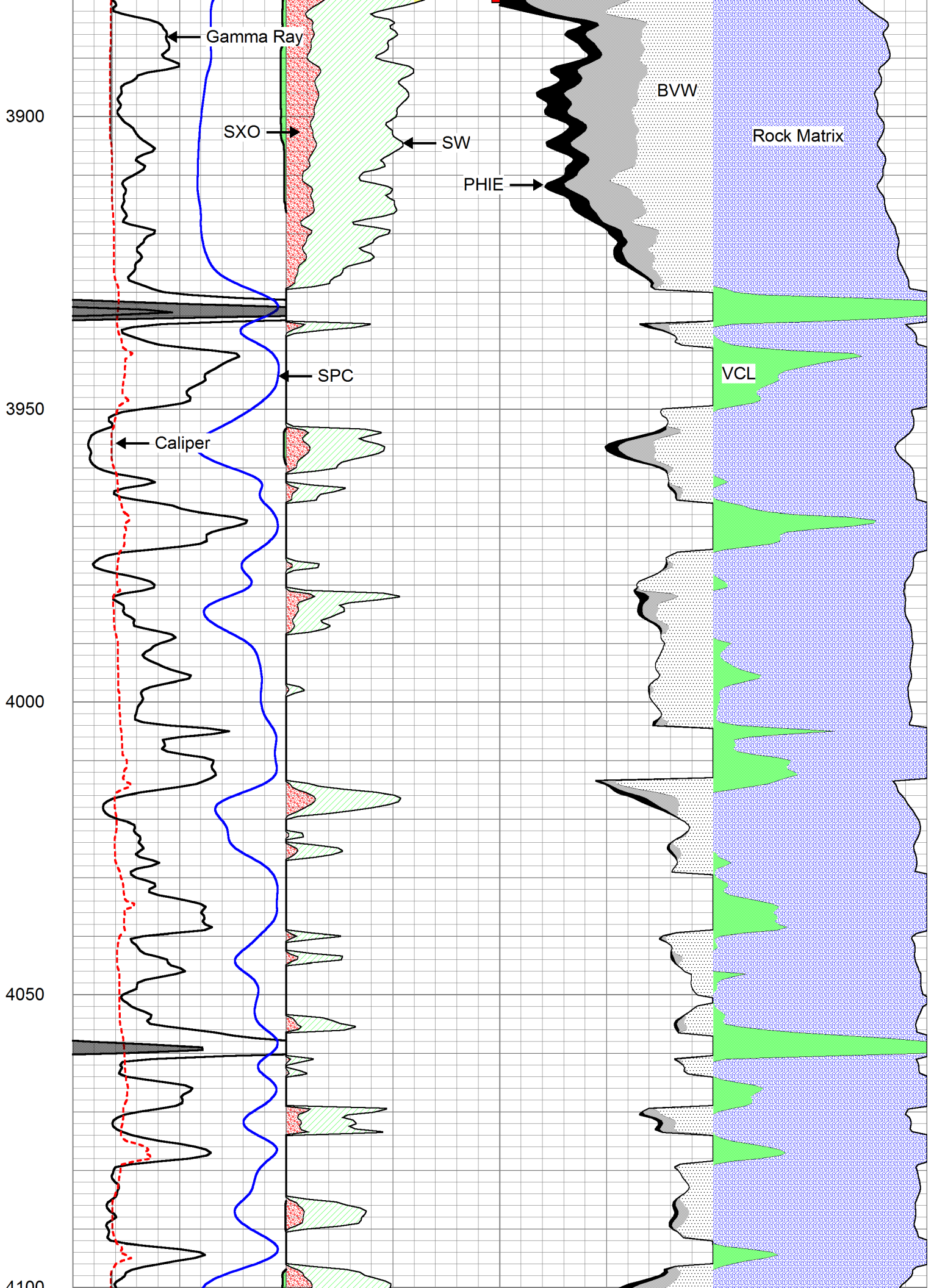
Database File: c:\warrior\data\cross plots\1wxplt.db
Dataset Pathname: litho
Presentation Format: 1wxplt



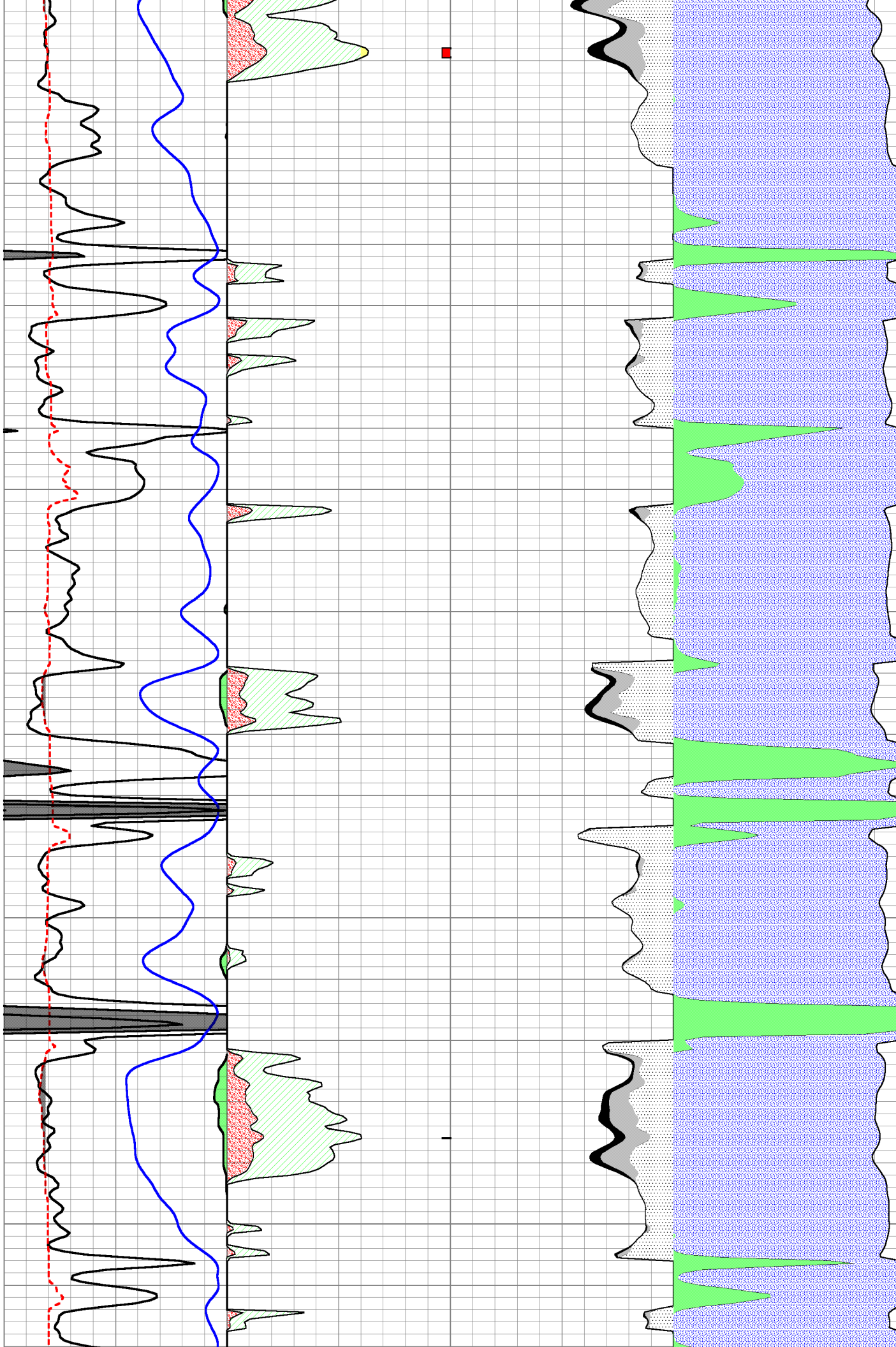
Database File: c:\warrior\data\abercrombie_vogel no. 3-24\abercrombie_vogel_3-24hd.db
 Dataset Pathname: rag/abercpi
 Presentation Format: ragcalc
 Dataset Creation: Sat Apr 21 17:40:49 2012
 Charted by: Depth in Feet scaled 1:240

0	Gamma Ray	150	1	SW	0	0.3	PHIE	0	0	VCL	1
6	SCAL (GAPI)	16	30	PAYFLAG	0	0.3	BVW	0	1	PHIE	0
-150	SPC (mV)	0	1	SXO	0	0.3	BVWSXO	0			





4100
4150
4200
4250
4300



4350

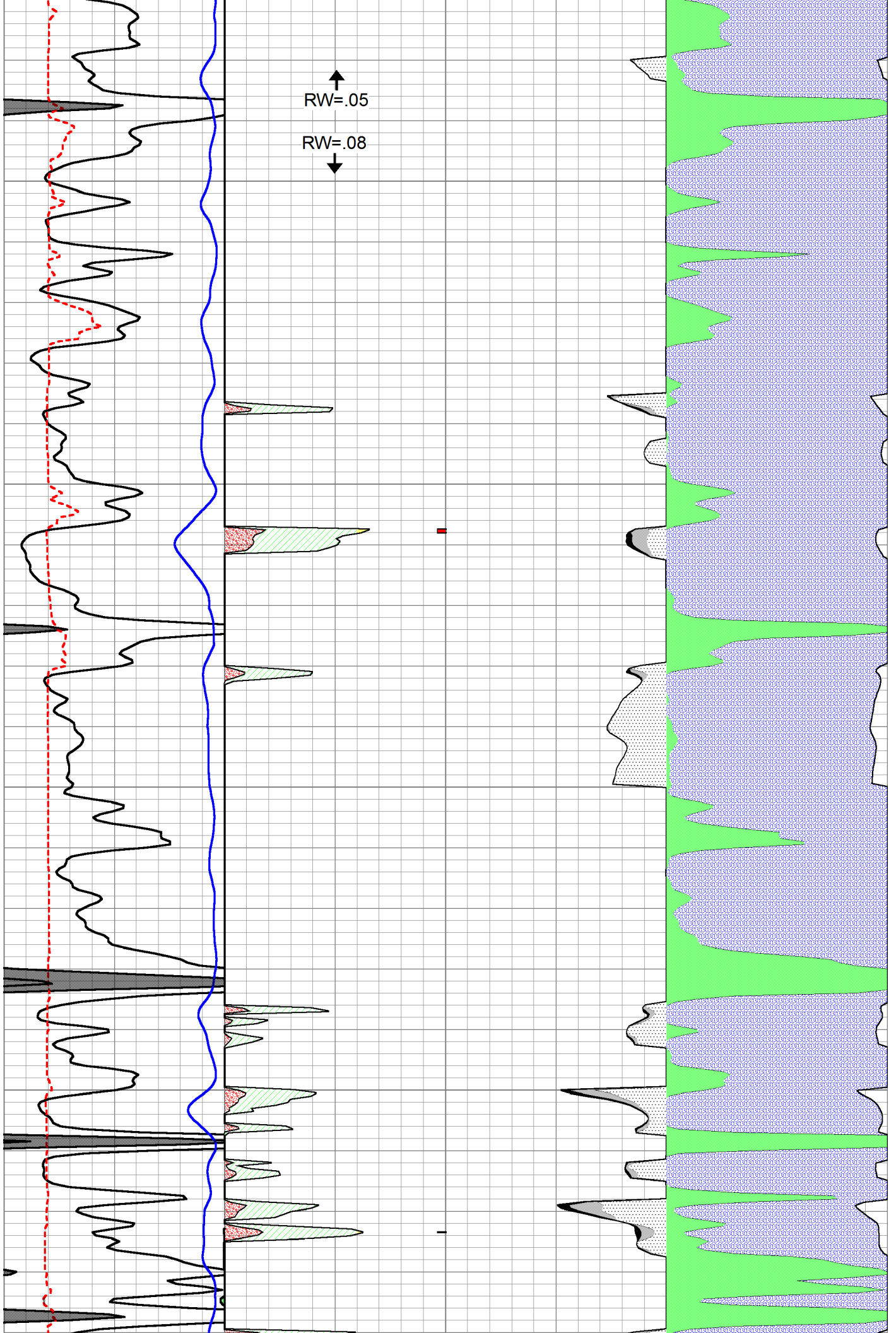
4400

4450

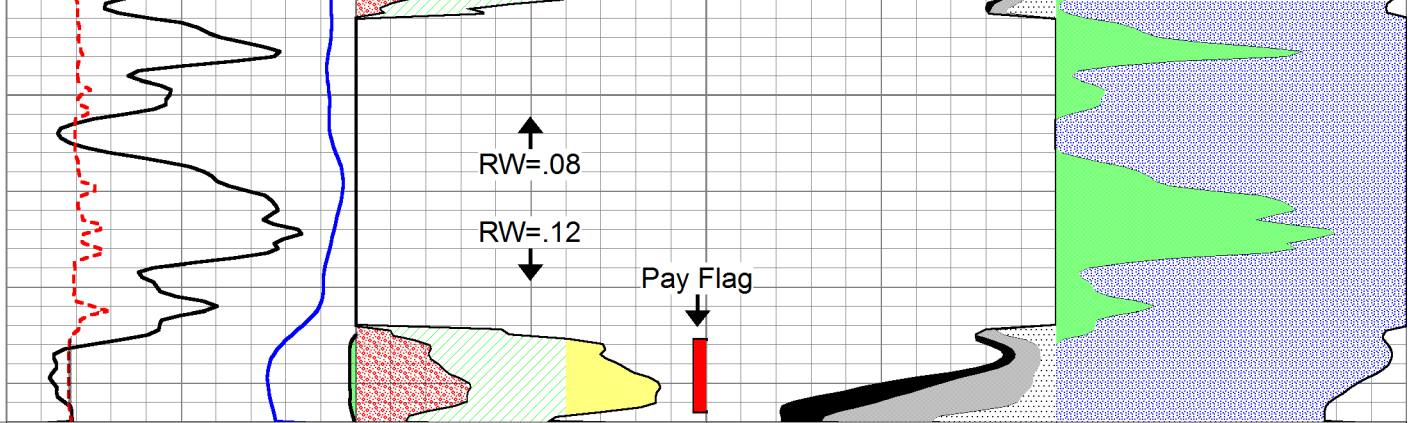
4500

RW=.05

RW=.08



4550



0	Gamma Ray	150	1	SW	0	0.3	PHIE	0	0	VCL	1
6	SCAL (GAPI)	16	30	PAYFLAG	0	0.3	BVW	0	1	PHIE	0
-150	SPC (mV)		0	SXO	0	0.3	BVWSXO	0			