



DIGITAL LOG (785) 625-3858

Radiation Guard Log

15-135-25,373-00-00

API No.

Company **Abercrombie Energy, LLC**

Well **Vogel No. 3-24**

Field **WCV**

County **Ness** State **Kansas**

Location **330' FNL & 330' FWL**

Other Services
None

Sec: **24** Twp: **19S** Rge: **26W**

Permanent Datum **Ground Level** Elevation **2618**

Log Measured From **Kelly Bushing** 9 Ft. Above Perm. Datum

Drilling Measured From **Kelly Bushing**

Date **4/21/2012**

Run Number **One**

Depth Driller **4595**

Depth Logger **4596**

Bottom Logged Interval **4595**

Top Log Interval **250**

Casing Driller **8.625 @ 261**

Casing Logger **262**

Bit Size **7.875**

Type Fluid in Hole **Chemical**

Salinity, ppm CL **2500**

Density / Viscosity **9.1 44**

pH / Fluid Loss **10.5 8.0**

Source of Sample **Flowline**

Rm @ Meas. Temp **.70 @ 66**

Rmf @ Meas. Temp **.53 @ 66**

Rmc @ Meas. Temp **.95 @ 66**

Source of Rmf / Rmc **Charts**

Rm @ BHT **.38 @ 122**

Operating Rig Time **3 Hours**

Max Rec. Temp. F **122**

Equipment Number **10**

Location **Hays**

Recorded By **J. Long**

Witnessed By **Mikael K. Maune**

<<< Fold Here >>>

All interpretations are opinions based on inferences from electrical or other measurements and we cannot and do not guarantee the accuracy or correctness of any interpretation, and we shall not, except in the case of gross or willful negligence on our part, be liable or responsible for any loss, costs, damages, or expenses incurred or sustained by anyone resulting from any interpretation made by any of our officers, agents or employees. These interpretations are also subject to our general terms and conditions set out in our current Price Schedule.

Comments

Thank you for using Log-Tech, Inc.
(785) 625-3858

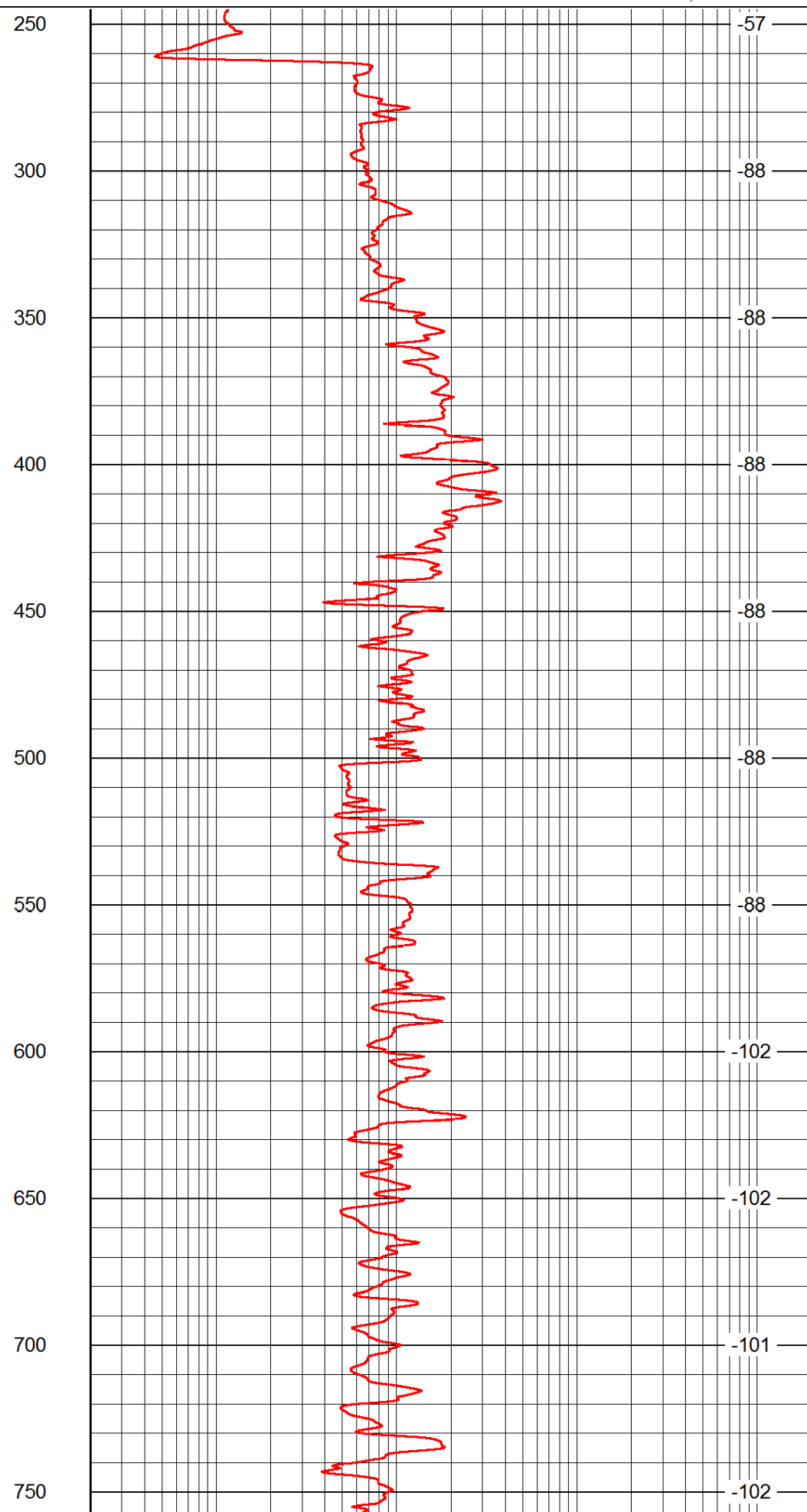
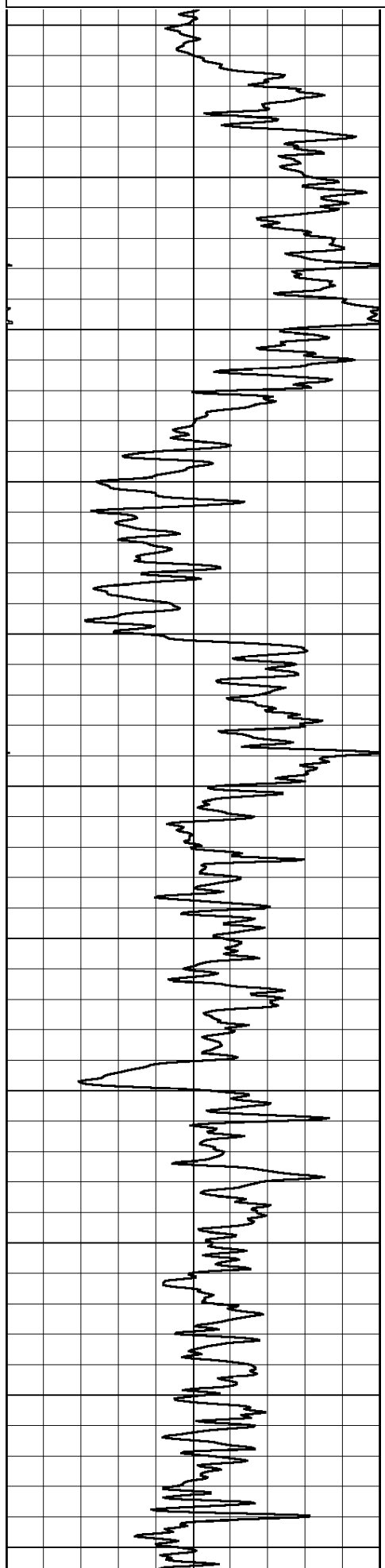
Beeler, (East Edge) 5 South on C Road to 80 Road, 1 1/2 East to D5 Road, 1/2 North to 85 Road, 1 East to Dead End, East through Cattle Guard, 1/4 North to Tank Battery, Take Left Fork, 1/2 West to Rig

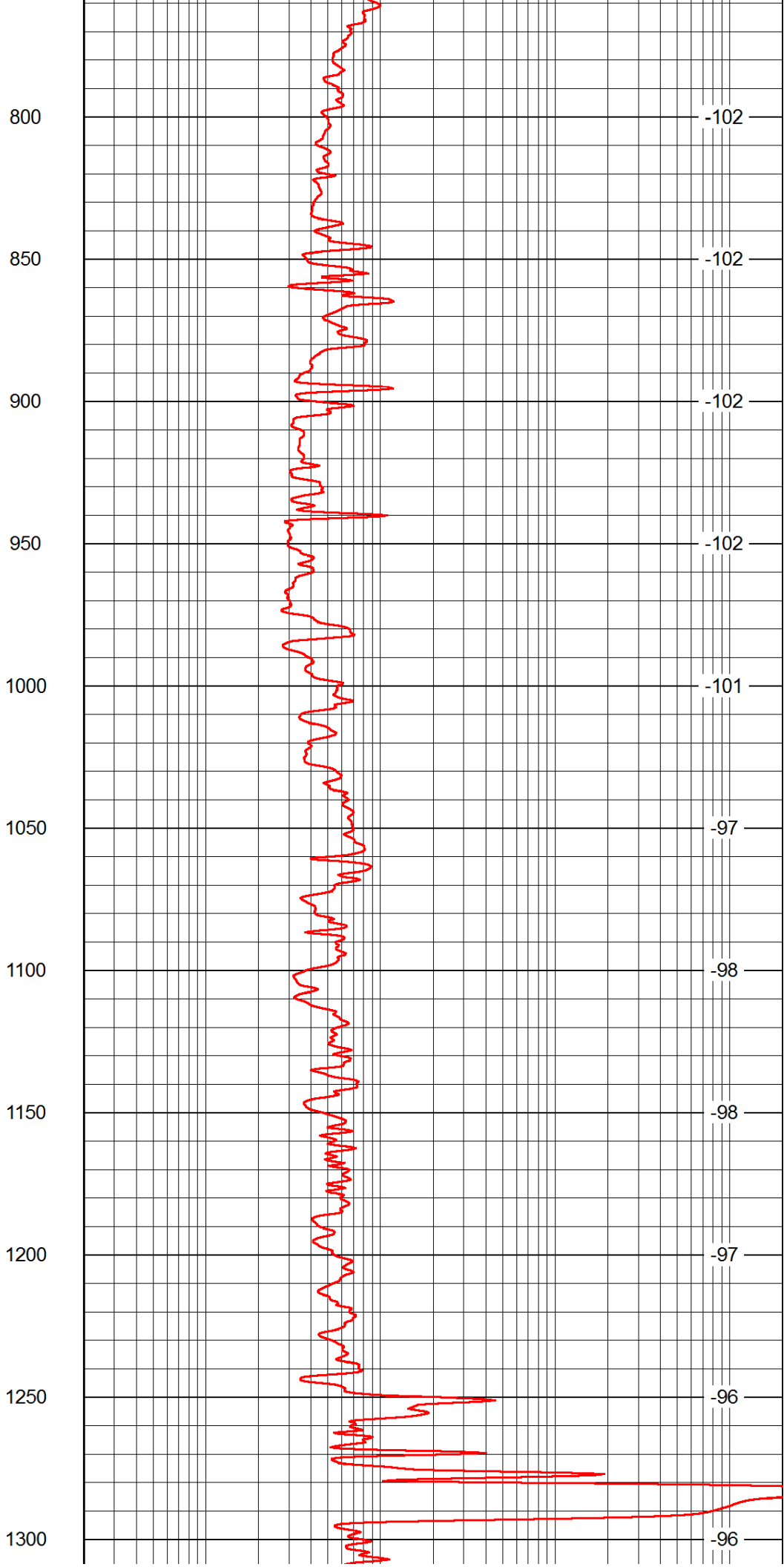
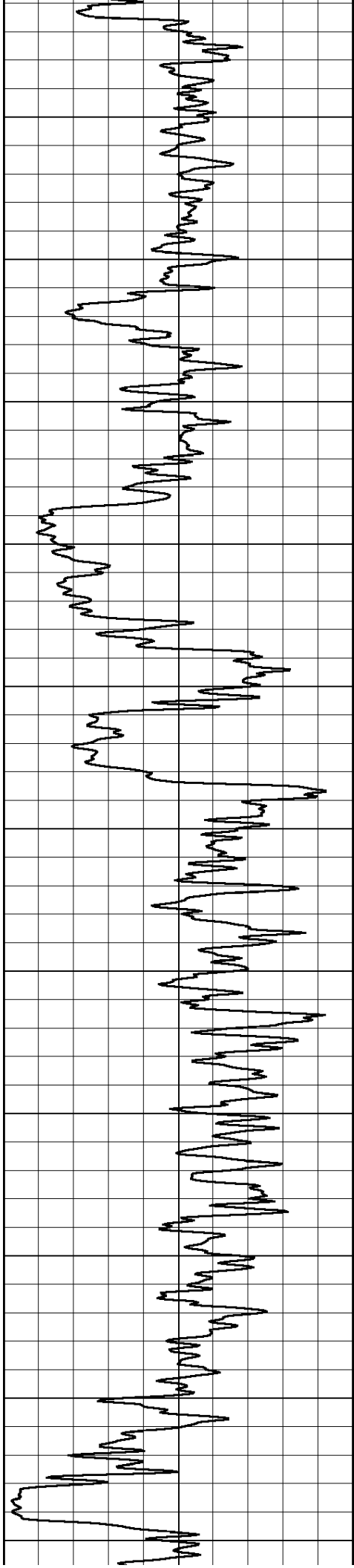
Database File: c:\warrior\data\abercrombie_vogel no. 3-24\abercrombie_vogel_3-24hd.db
 Dataset Pathname: rag/aberrag
 Presentation Format: rag2in
 Dataset Creation: Sat Apr 21 07:00:09 2012
 Charted by: Depth in Feet scaled 1:600

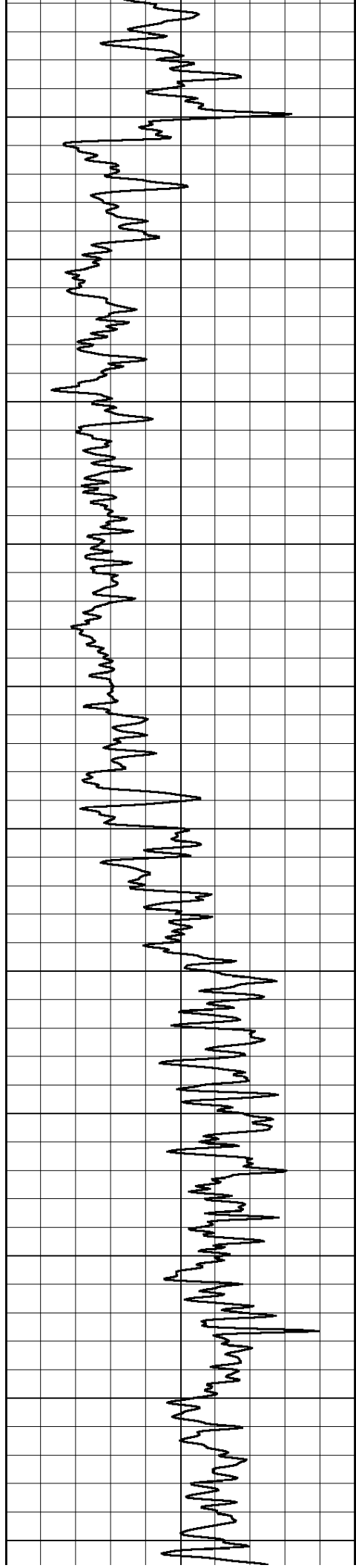
0 Gamma Ray 150

0.2 lgrd 2000

LSPD







1350

1400

1450

1500

1550

1600

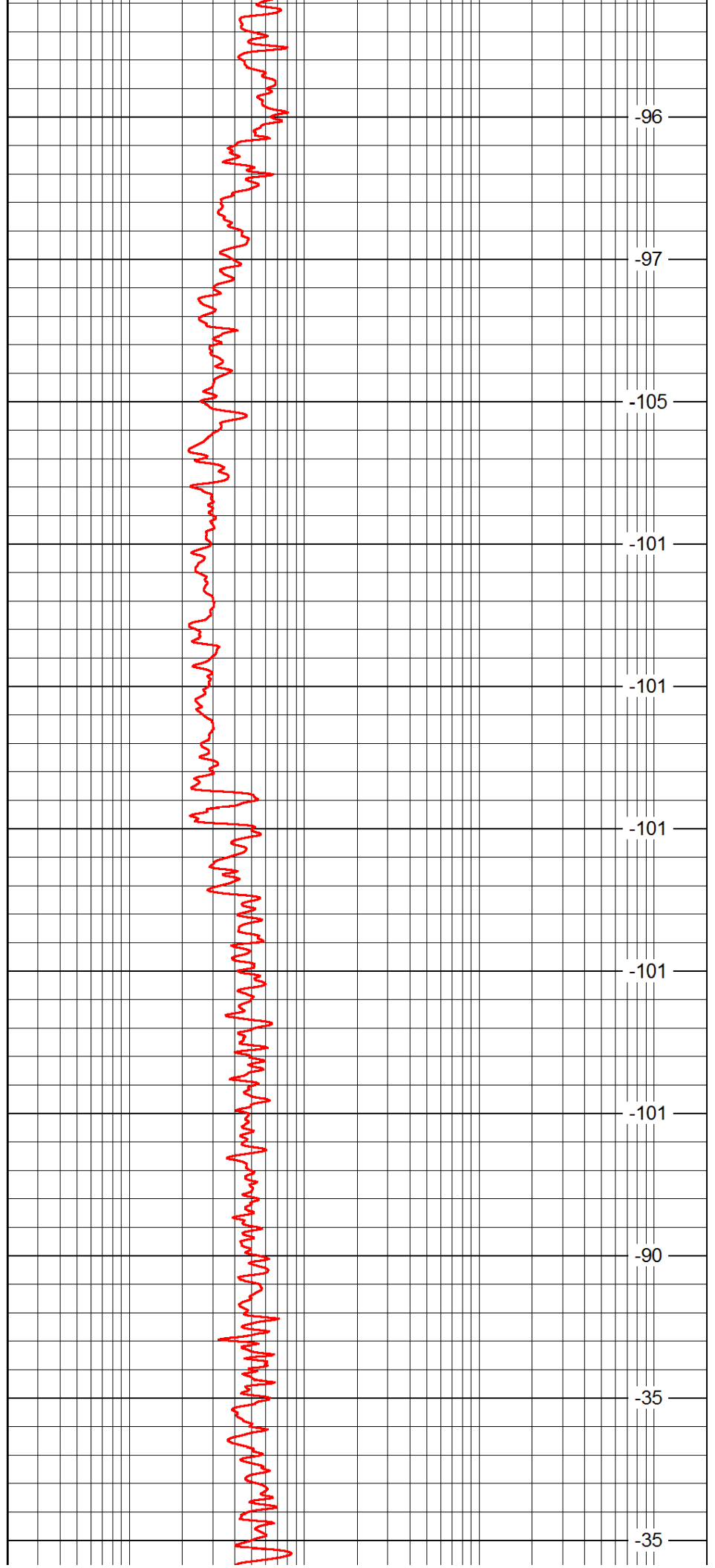
1650

1700

1750

1800

1850



-96

-97

-105

-101

-101

-101

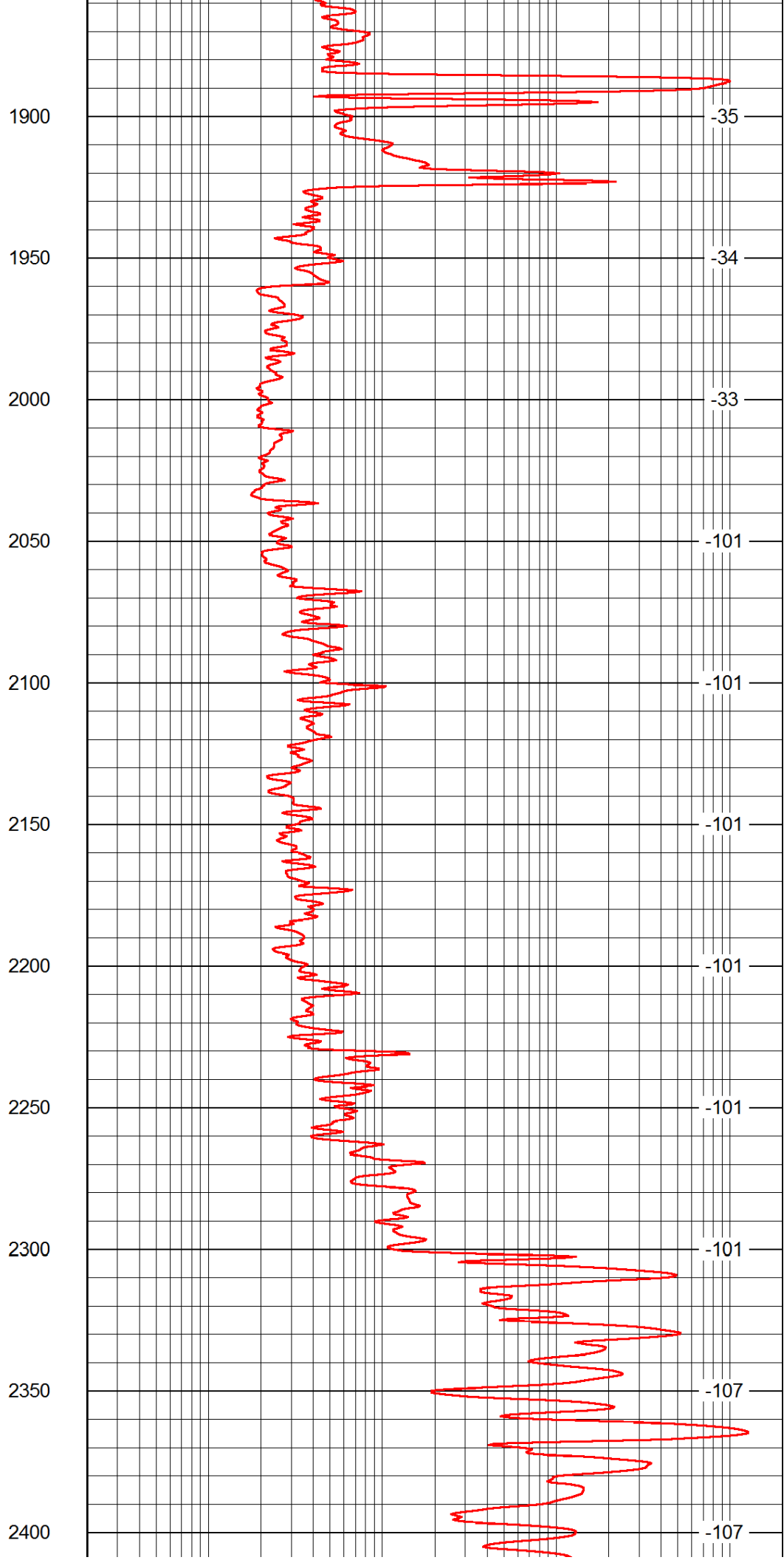
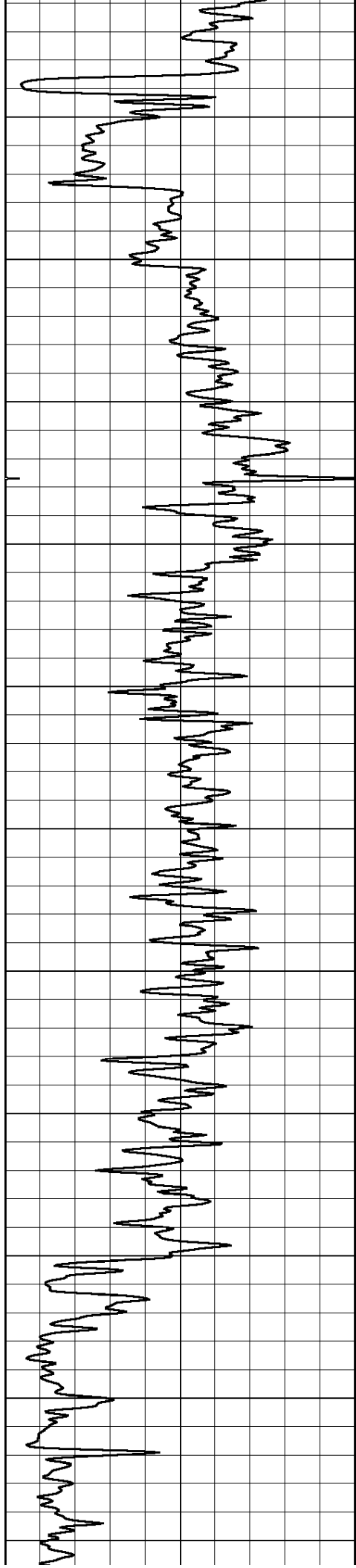
-101

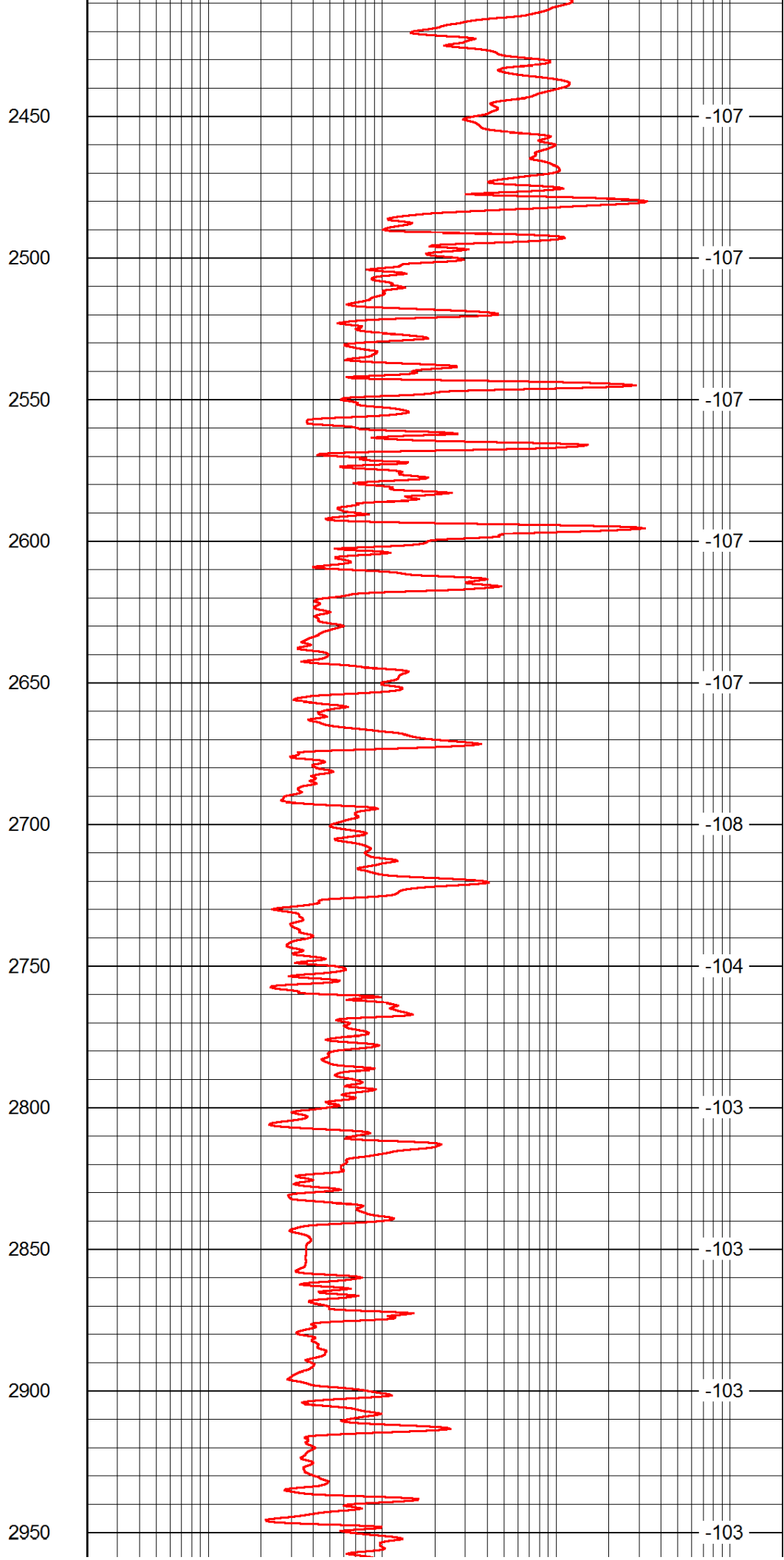
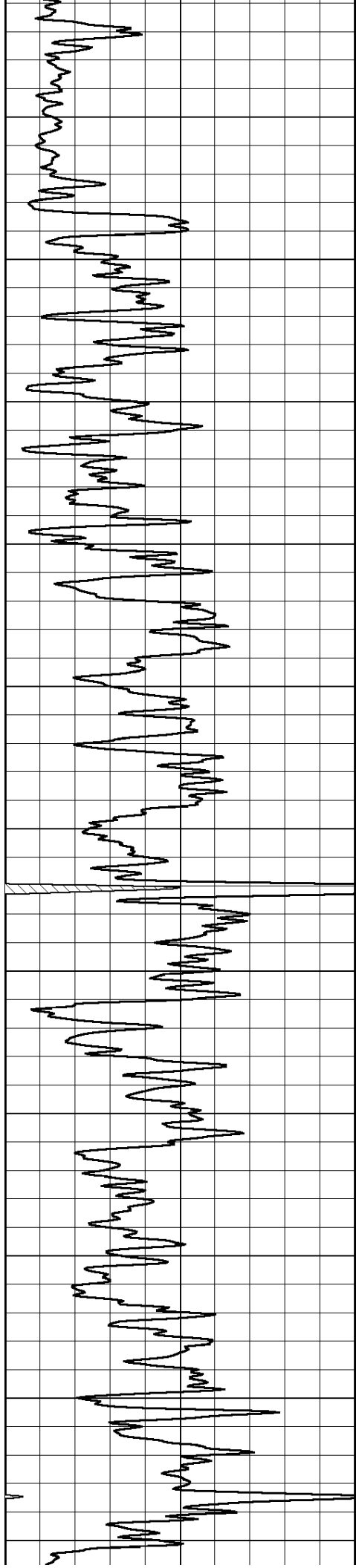
-101

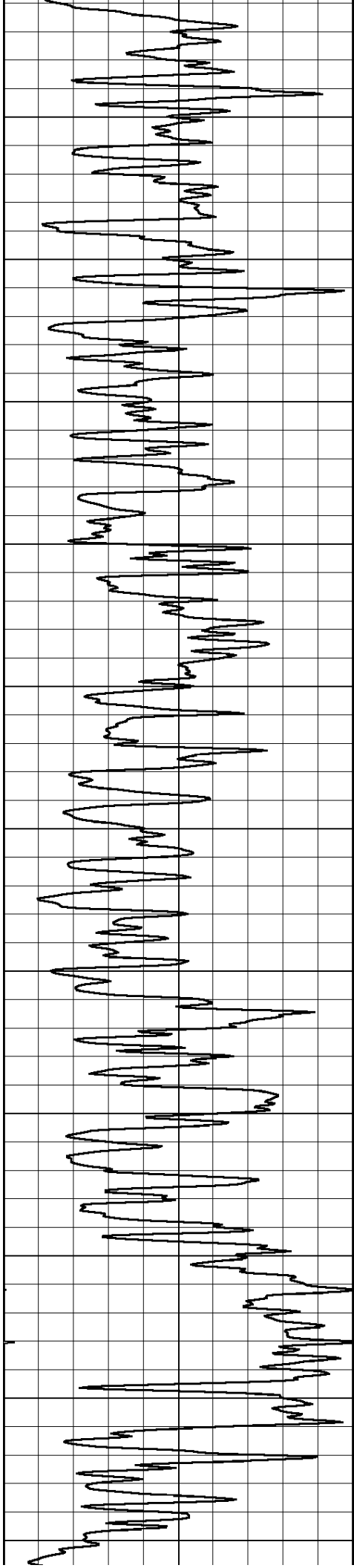
-90

-35

-35







3000

3050

3100

3150

3200

3250

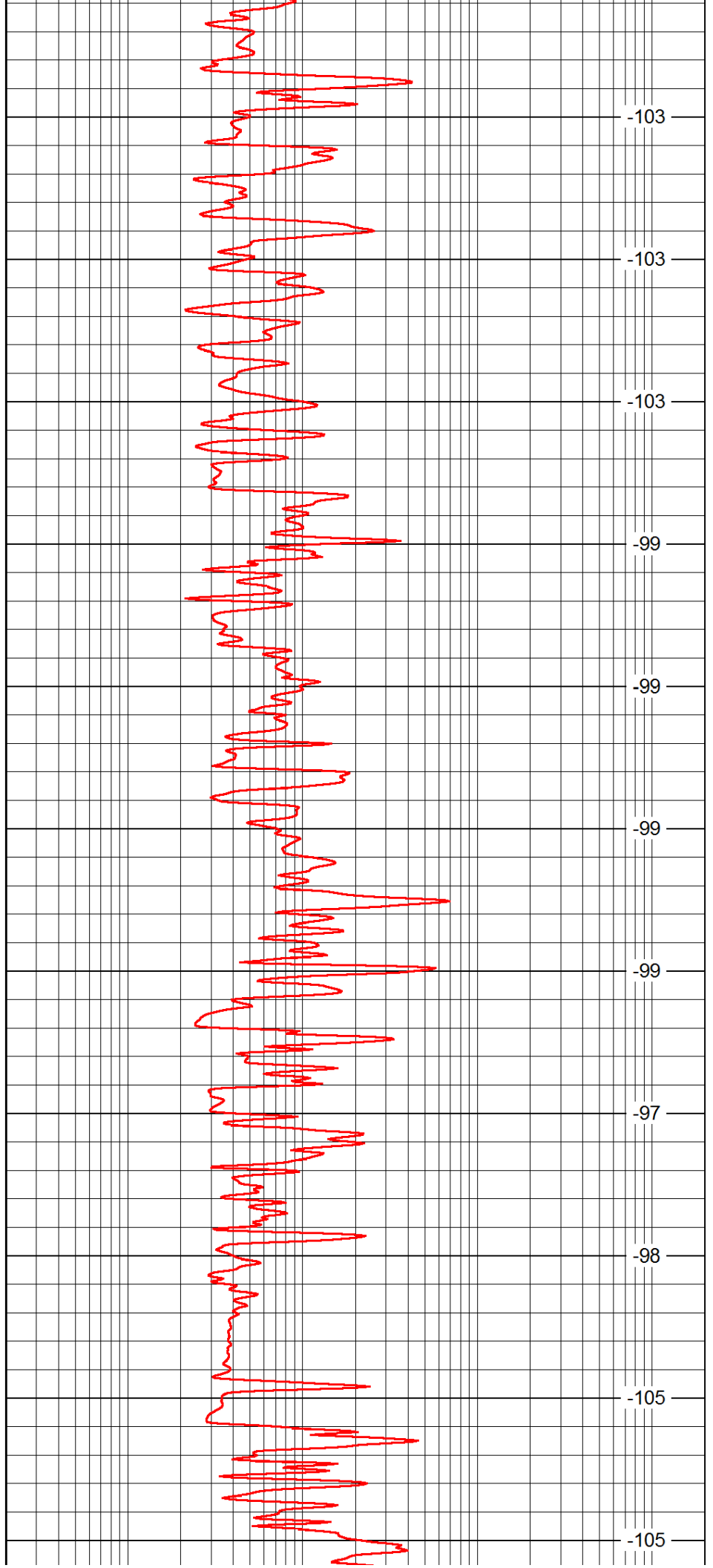
3300

3350

3400

3450

3500



-103

-103

-103

-99

-99

-99

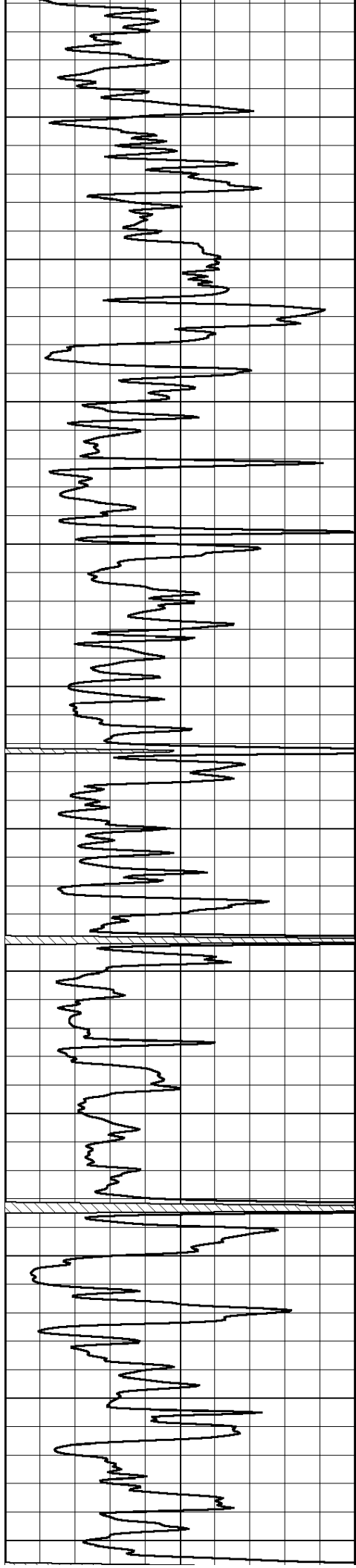
-99

-97

-98

-105

-105



3550

3600

3650

3700

3750

3800

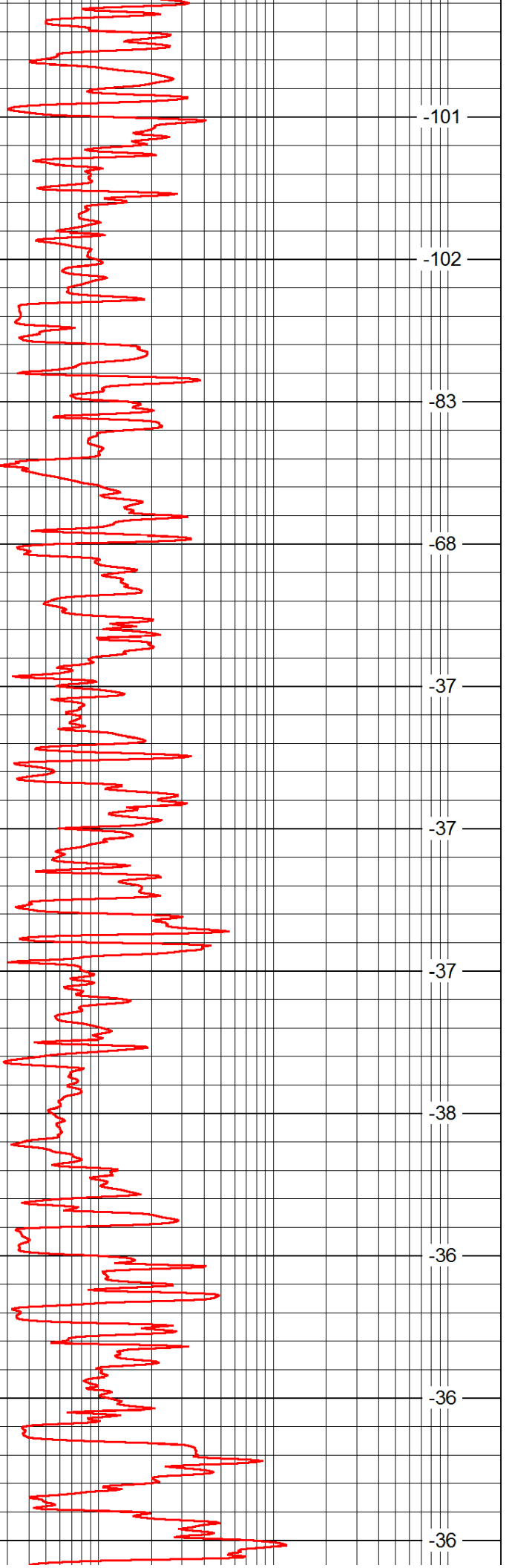
3850

3900

3950

4000

4050



-101

-102

-83

-68

-37

-37

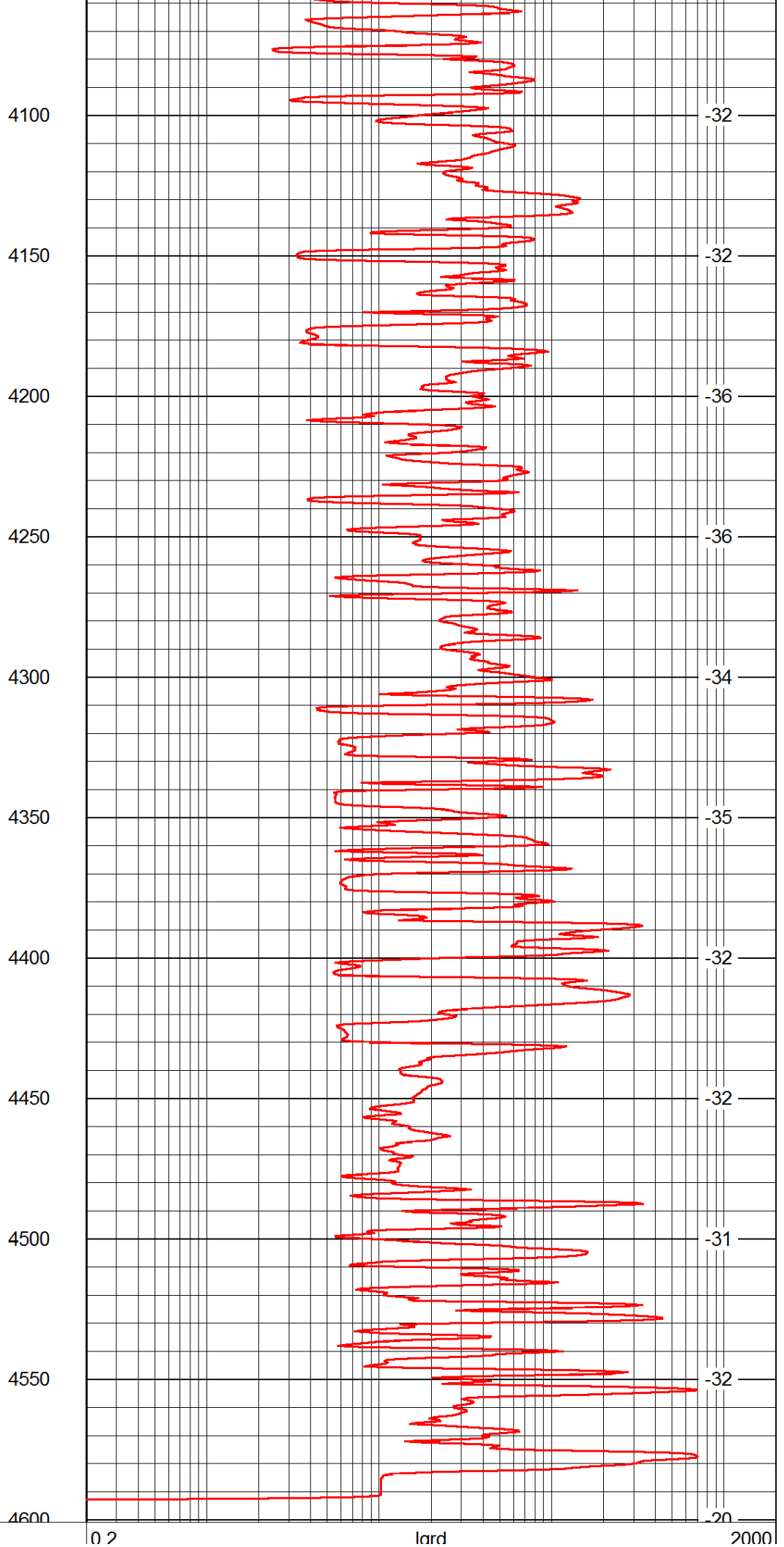
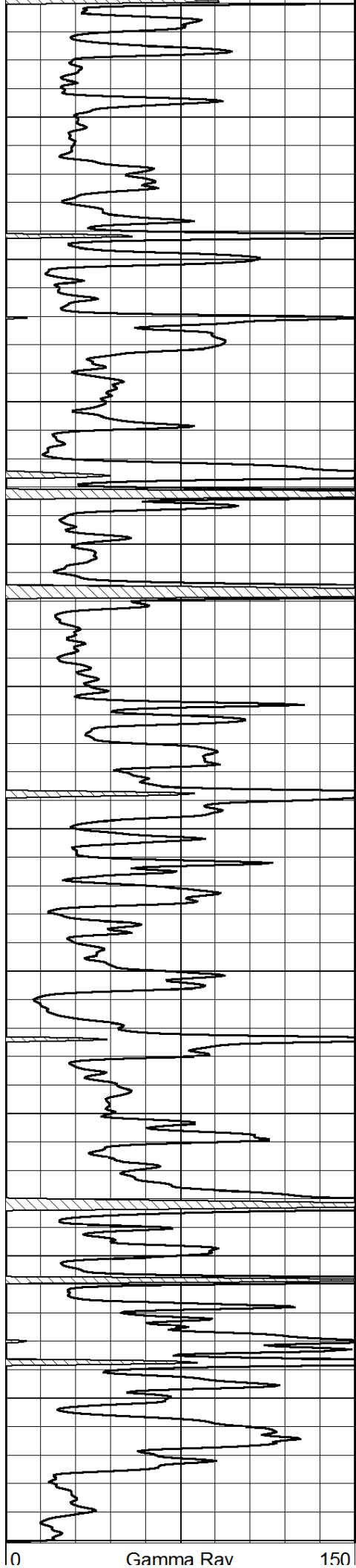
-37

-38

-36

-36

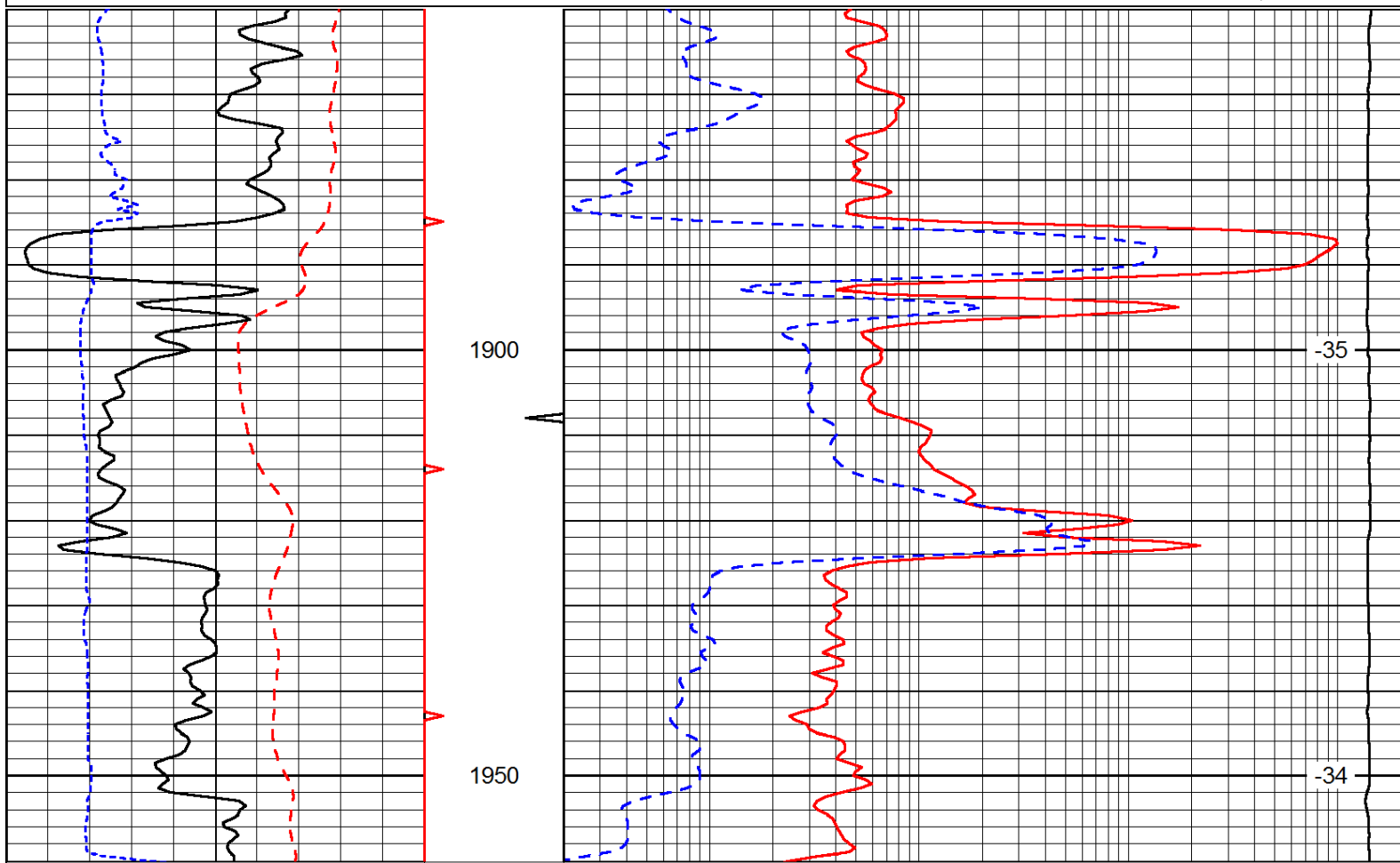
-36



Database File: c:\warrior\data\abercrombie_vogel no. 3-24\abercrombie_vogel_3-24hd.db
 Dataset Pathname: rag/aberrag
 Presentation Format: ragcnl
 Dataset Creation: Sat Apr 21 07:00:09 2012
 Charted by: Depth in Feet scaled 1:240

0	Gamma Ray	150
6	Caliper (GAPI)	16
0	S P (mV)	200

0.2	lgrd	2000
17000	Neutron	44000
15000	Line Weight	0



0	Gamma Ray	150
6	Caliper (GAPI)	16
0	S P (mV)	200

0.2	lgrd	2000
17000	Neutron	44000
15000	Line Weight	0

Database File: c:\warrior\data\abercrombie_vogel no. 3-24\abercrombie_vogel_3-24hd.db
 Dataset Pathname: rag/aberrag
 Presentation Format: ragcnl
 Dataset Creation: Sat Apr 21 07:00:09 2012
 Charted by: Depth in Feet scaled 1:240

0	Gamma Ray	150
6	Caliper (GAPI)	16
0	S P (mV)	200

0.2	lgrd	2000
17000	Neutron	44000
15000	Line Weight	0

